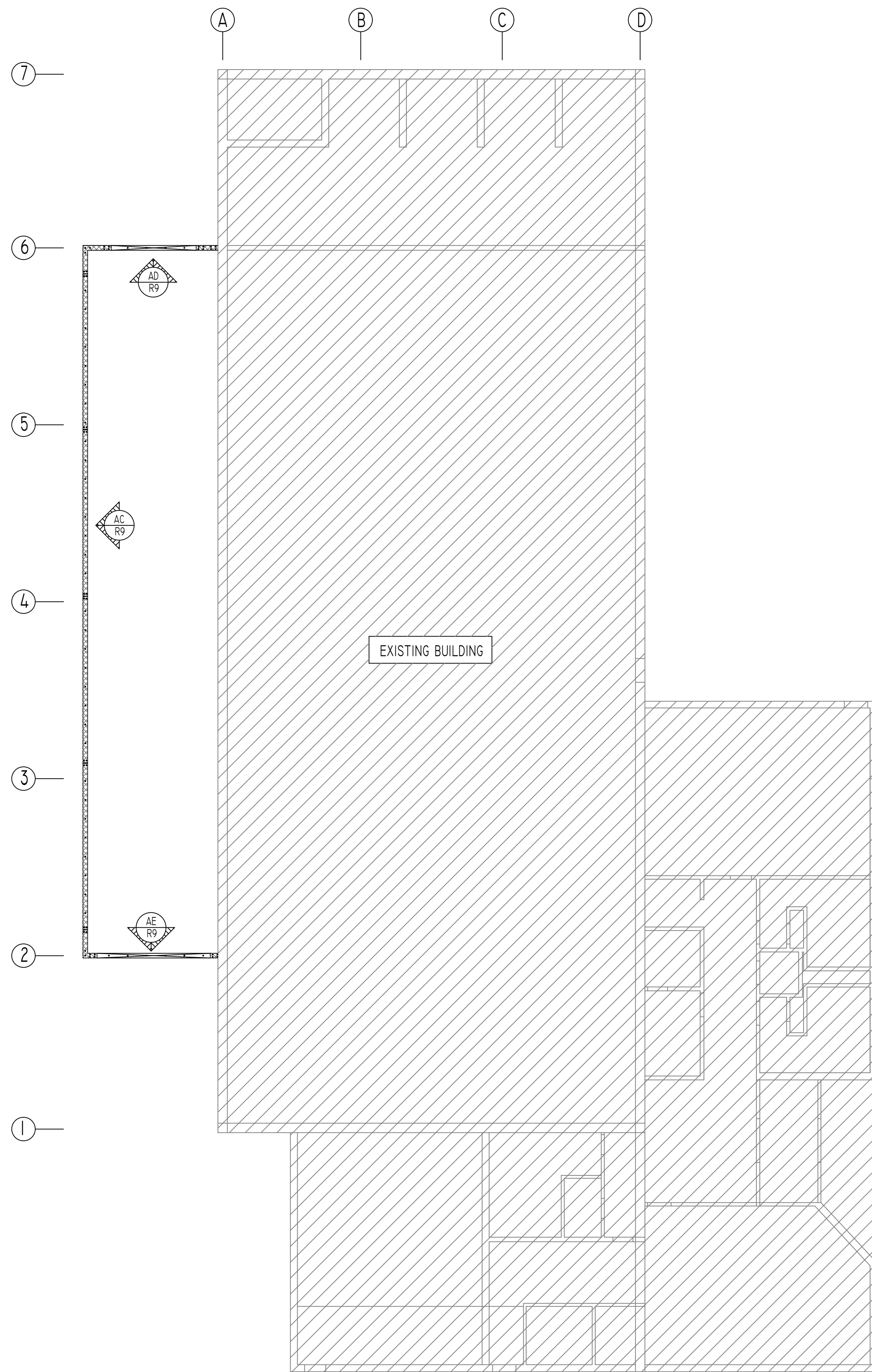
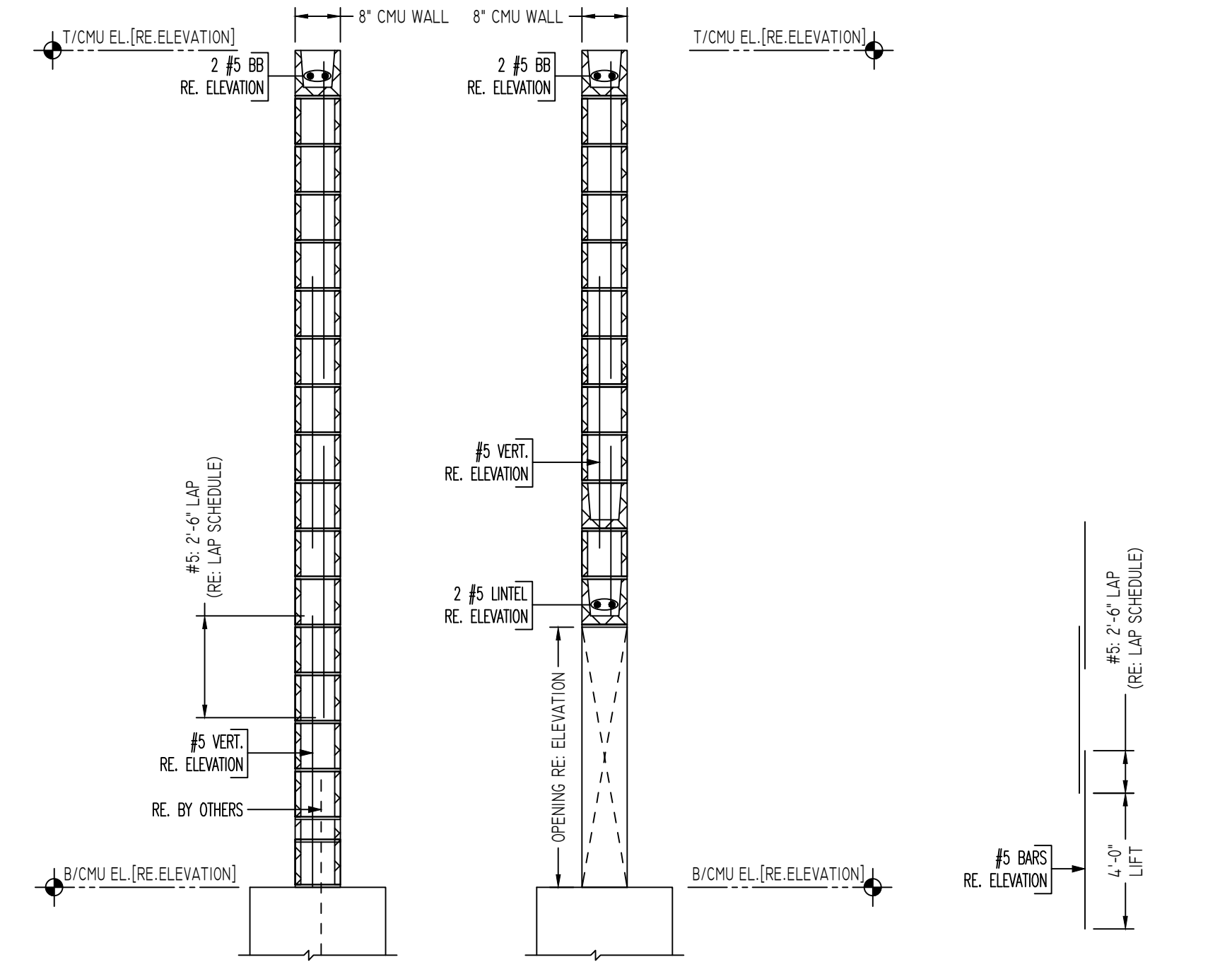


**CMU WALL KEY PLAN**  
SCALE - 3/32"=1'-0"  
REF: S101C

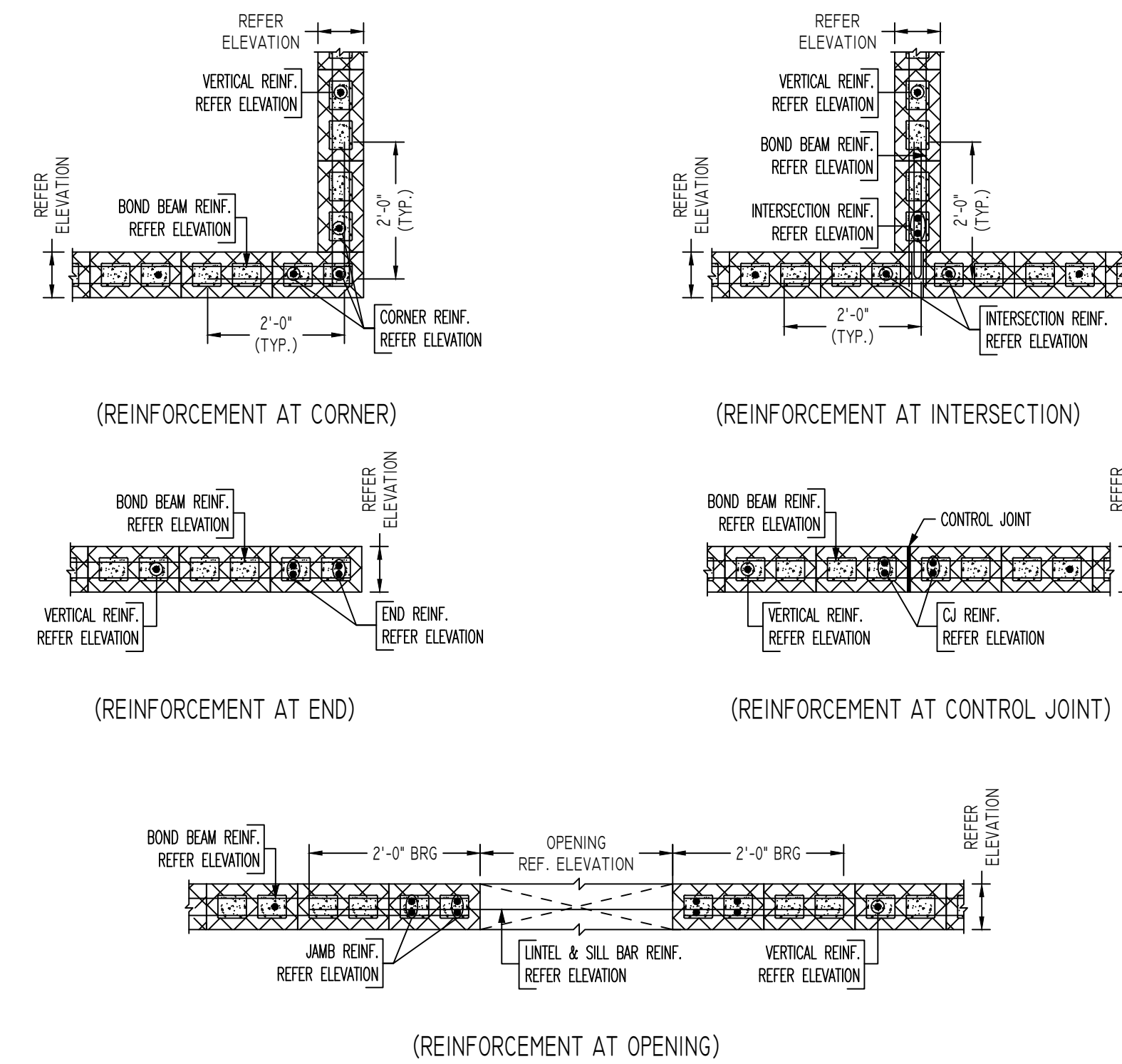


**CMU WALL KEY PLAN**  
SCALE - 3/32"=1'-0"  
REF: S101T



**TYPICAL CMU WALL SECTION DETAILS**  
SCALE: 1/2"=1'-0"  
REF: -

**TYPICAL VERTICAL BAR LAPPING DETAIL**



**TYPICAL CMU WALL DETAILS**  
SCALE: 1/2"=1'-0"  
REF: -

REVISION MARK	REVISION DETAILS	DATE
0	FOR APPROVAL	10/16/2019

**LEGEND**

- NO. OF LOCATION
- NO. OF LIFT
- NO. OF BARS
- 2x2x1 #5x6'-6" VERTS
- NO. OF LIFT (OR) NO. OF LOCATION
- NO. OF BARS
- 2x1 #5x6'-6" VERTS

**LAP SCHEDULE**

SIZE	48" LAP
#3	18"
#4	24"
#5	30"
#6	36"
#7	42"
#8	48"
#9	55"
#10	61"
#11	68"

**Abbreviations:**

I.F.=Inside Face	OPNG=Opening
O.F.=Outside Face	BAL=Balance
E.F.=Each Face	BTW=Between
DWL=Dowel	CL=Construction Joint
N=Vertical	CLR=CLEARANCE
H=Horizontal	CMU=Concrete Masonry Unit
C.B.=Corner Bar	CONT.=Continuous
S.DWL=Slab Dowel	EA=Each
E.W.=Each Way	Elev.=Elevation
B/BOT=Bottom	EMB=Embedment
T=Top	SW=Short Way
MDWL=Masonry Dowel	LW=Long Way
B.B.=Bond Beam	(BL)=Black Bar
ALT.=Alternate	(EP)=Epoxy Bar
Approx. Approximate	(GA)=Galvanized

**NOTICE**

Shortages, improper fabrication or claims for any other reason must be reported to this company within a period of 15 days of delivery. This company reserves the right to field inspect prior to replacement or reworking of nonconforming material, and will not honor charges for work done in the field without specific authorization from this company.

REINFORCING STEEL PLACING DRAWINGS ONLY USE IN CONJUNCTION WITH CONTRACT DRAWINGS & SPECIFICATIONS. ELEVATIONS & DIMENSIONS SHOWN ON THIS DRAWING ARE FOR DETAILING PURPOSES ONLY AND SHOULD NOT BE USED FOR CONSTRUCTION UNLESS VERIFIED BY ENGINEER OR CONTRACTOR.

PROJECT	LABORER'S INTERNATIONAL UNION OF NORTH AMERICA		
LOCATION	37 DEERFIELD RD, CT 06259		
ARCHITECT	RGB ARCHITECTURE & ENGINEERING		
ENGINEER	RGB ARCHITECTURE & ENGINEERING		
CUSTOMER	ACRANOM MASONRY		
DRAWN BY:	MRS	DATE:	10-16-19
REVIEWED BY:	T/L	DATE:	19123
DRAWING TITLE:	CMU WALL PLAN DETAILS		DRAWING NO.:
			R01