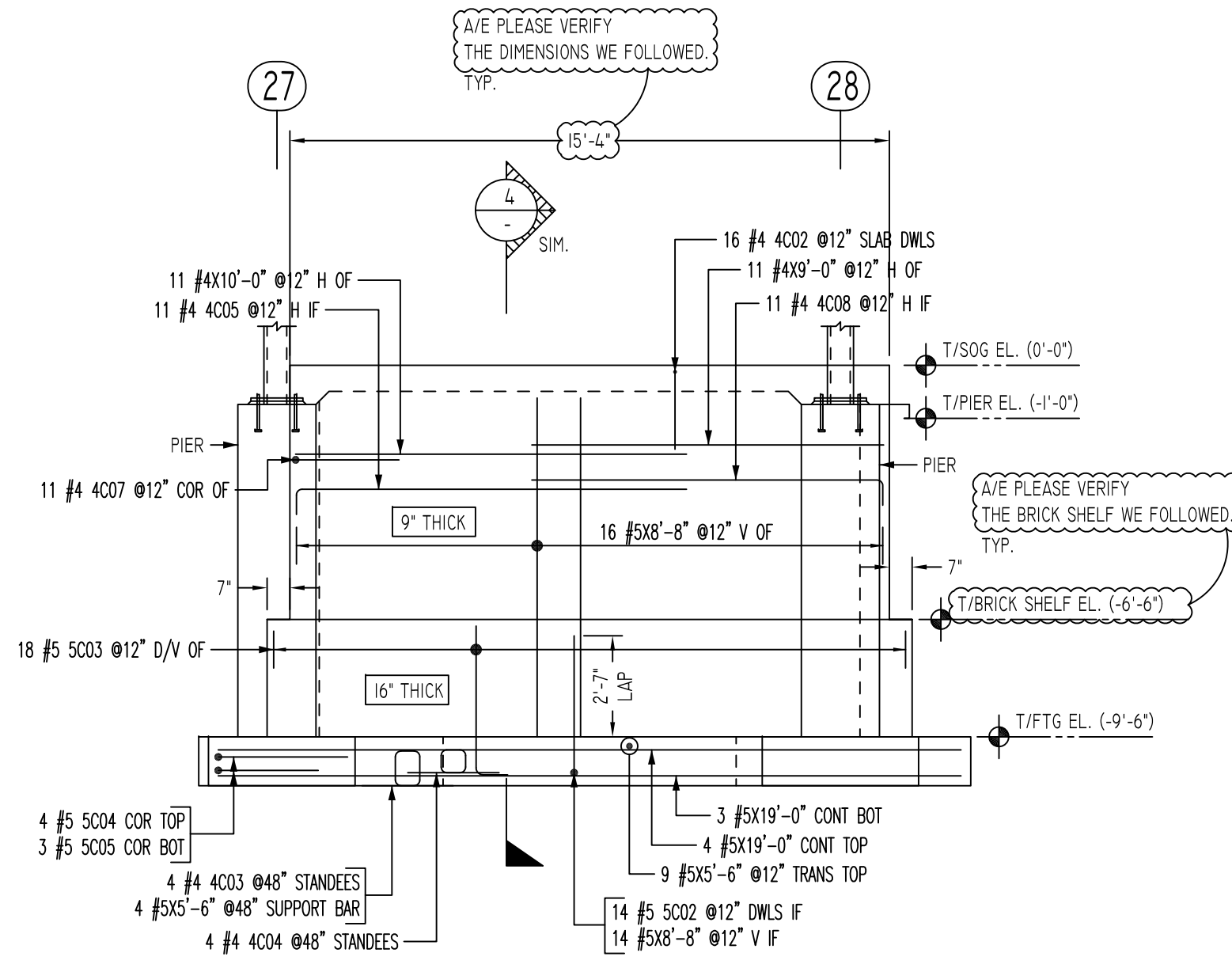
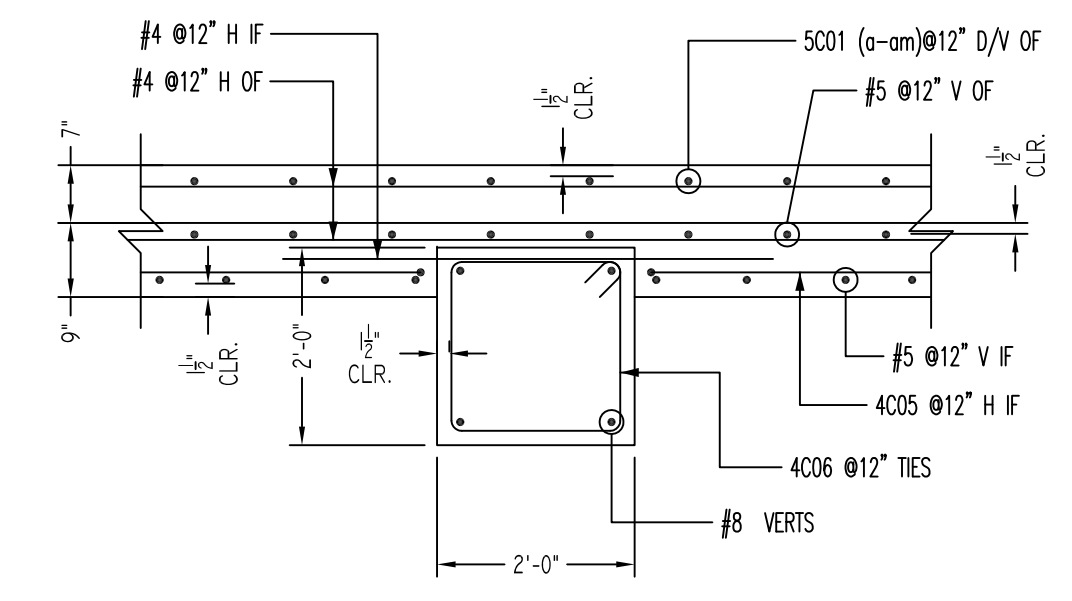


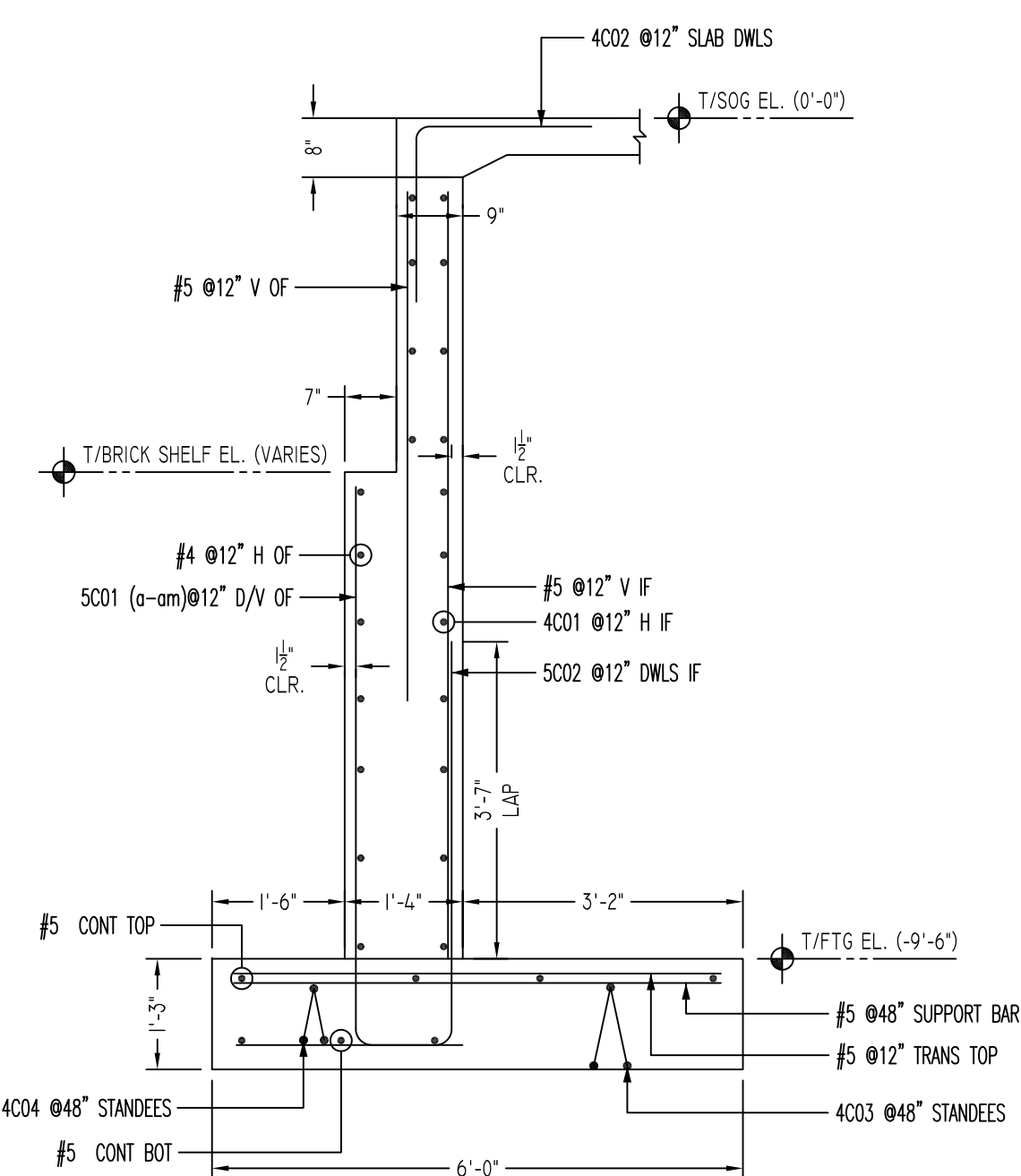
ELEVATION 3A
SCALE - 1/4"=1'-0"
REF: S1.0A & A3.1 (DT: 09/13/19)
A/E PLEASE PROVIDE CONTROL JOINT LOCATIONS TYP.



ELEVATION 3B
SCALE - 1/4"=1'-0"
REF: S1.0A & A3.1 (DT: 09/13/19)
A/E PLEASE PROVIDE CONTROL JOINT LOCATIONS TYP.



SECTION A
SCALE - 1/2"=1'-0"
REF: P1/S2.0 (DT: 09/13/19)

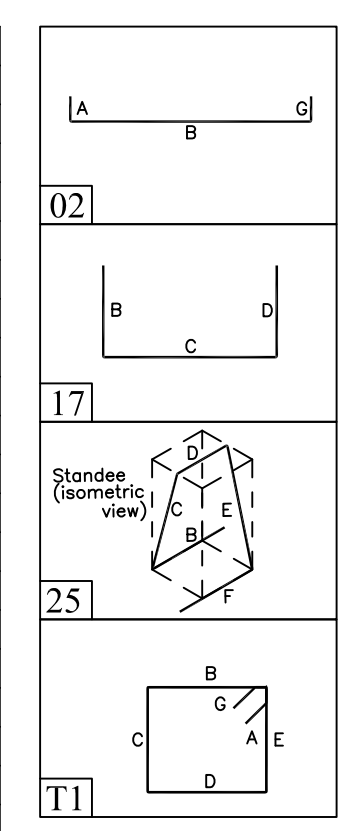


SECTION 4
SCALE - 1/2"=1'-0"
REF: 4/S3.0 (DT: 09/13/19)

Release Code: R3

BENDING DETAILS												
Bar Mark	Qty	Size	Total length	Type	A'	B'	C'	D'	E'	F'	G'	H'
4C01	11	#4	7'0"	2	8"	5'8"						
4C02	55	#4	4'0"	17			2'0"	2'0"				
4C03	15	#4	5'7"	25			1'6"	11 1/2"	8"	11 1/2"	1'6"	11"
4C04	15	#4	4'11"	25			1'6"	7 1/2"	8"	7 1/2"	1'6"	7 1/2"
4C05	33	#4	10'8"	2	8"	10'0"						
4C06	33	#4	7'9"	11	4 1/2"	1'9"	1'9"	1'9"	1'9"	4 1/2"	3'	
4C07	22	#4	5'1"	17			2'8"	2'8"				
4C08	11	#4	9'8"	2	8"	9'0"						
4C09	22	#4	8'2"	2	8"	7'6"						
5C01a	1	#5	4'3 1/2"	2	10"	3'5 1/2"						
5C01b	1	#5	4'4"	2	10"	3'6"						
5C01c	1	#5	4'4"	2	10"	3'6"						
5C01d	1	#5	4'4 1/2"	2	10"	3'6 1/2"						
5C01e	1	#5	4'4 1/2"	2	10"	3'6 1/2"						
5C01f	1	#5	4'4 1/2"	2	10"	3'6 1/2"						
5C01g	1	#5	4'5"	2	10"	3'7"						
5C01h	1	#5	4'5"	2	10"	3'7"						
5C01i	1	#5	4'5 1/2"	2	10"	3'7 1/2"						
5C01j	1	#5	4'5 1/2"	2	10"	3'7 1/2"						
5C01k	1	#5	4'6"	2	10"	3'8"						
5C01l	1	#5	4'6"	2	10"	3'8"						
5C01m	1	#5	4'6 1/2"	2	10"	3'8 1/2"						
5C01n	1	#5	4'6 1/2"	2	10"	3'8 1/2"						
5C01o	1	#5	4'6 1/2"	2	10"	3'8 1/2"						
5C01p	1	#5	4'7"	2	10"	3'9"						
5C01q	1	#5	4'7"	2	10"	3'9"						
5C01r	1	#5	4'7 1/2"	2	10"	3'9 1/2"						
5C01s	1	#5	4'7 1/2"	2	10"	3'9 1/2"						
5C01t	1	#5	4'8"	2	10"	3'10"						
5C01u	1	#5	4'8"	2	10"	3'10"						
5C01v	1	#5	4'8 1/2"	2	10"	3'10 1/2"						
5C01w	1	#5	4'8 1/2"	2	10"	3'10 1/2"						
5C01x	1	#5	4'8 1/2"	2	10"	3'10 1/2"						
5C01y	1	#5	4'9"	2	10"	3'11"						
5C01z	1	#5	4'9"	2	10"	3'11"						
5C01aa	1	#5	4'9 1/2"	2	10"	3'11 1/2"						
5C01ab	1	#5	4'9 1/2"	2	10"	3'11 1/2"						
5C01ac	1	#5	4'10"	2	10"	4'0"						
5C01ad	1	#5	4'10"	2	10"	4'0"						
5C01ae	1	#5	4'10 1/2"	2	10"	4'0 1/2"						
5C01af	1	#5	4'10 1/2"	2	10"	4'0 1/2"						
5C01ag	1	#5	4'10 1/2"	2	10"	4'0 1/2"						
5C01ah	1	#5	4'11"	2	10"	4'1"						
5C01ai	1	#5	4'11"	2	10"	4'1"						
5C01aj	1	#5	4'11 1/2"	2	10"	4'1 1/2"						
5C01ak	1	#5	4'11 1/2"	2	10"	4'1 1/2"						
5C01al	1	#5	5'0"	2	10"	4'2"						
5C01am	1	#5	5'0"	2	10"	4'2"						
5C02	4	#5	6'1 1/2"	17	2'5 1/2"	3'8"						
5C03	1	#5	4'8"	2	10"	3'10"						
5C04	1	#5	6'8"	17	3'4"	3'4"						
5C05	9	#5	5'2"	17	2'7"	2'7"						
8C01	1	#8	7'6"	2	1'4"	6'2"						

ALL BARS IN THIS DRAWING
ASTM A615 GRADE 60
BLACK UNCOATED



TYPICAL REINFORCING BAR CLEARANCE TABLE

LOCATION	MIN. COVER
FOOTINGS AGAINST EARTH	
BOTTOM	3" CLR
TOP	2" CLR
COLUMNS AND PIERS (VERT. REINF.)	2" CLR
COLUMNS AND PIERS (TIES, REINF.)	1 1/2" CLR
WALLS INTERIOR FACE (#5 & SMALLER)	1 1/2" CLR
WALLS INTERIOR FACE (#6 & LARGER)	2" CLR
WALLS EXTERIOR FACE (#5 & SMALLER)	1 1/2" CLR
WALLS EXTERIOR FACE (#6 & LARGER)	2" CLR

LAP SCHEDULE FOR FOOTINGS & FOUNDATION WALLS

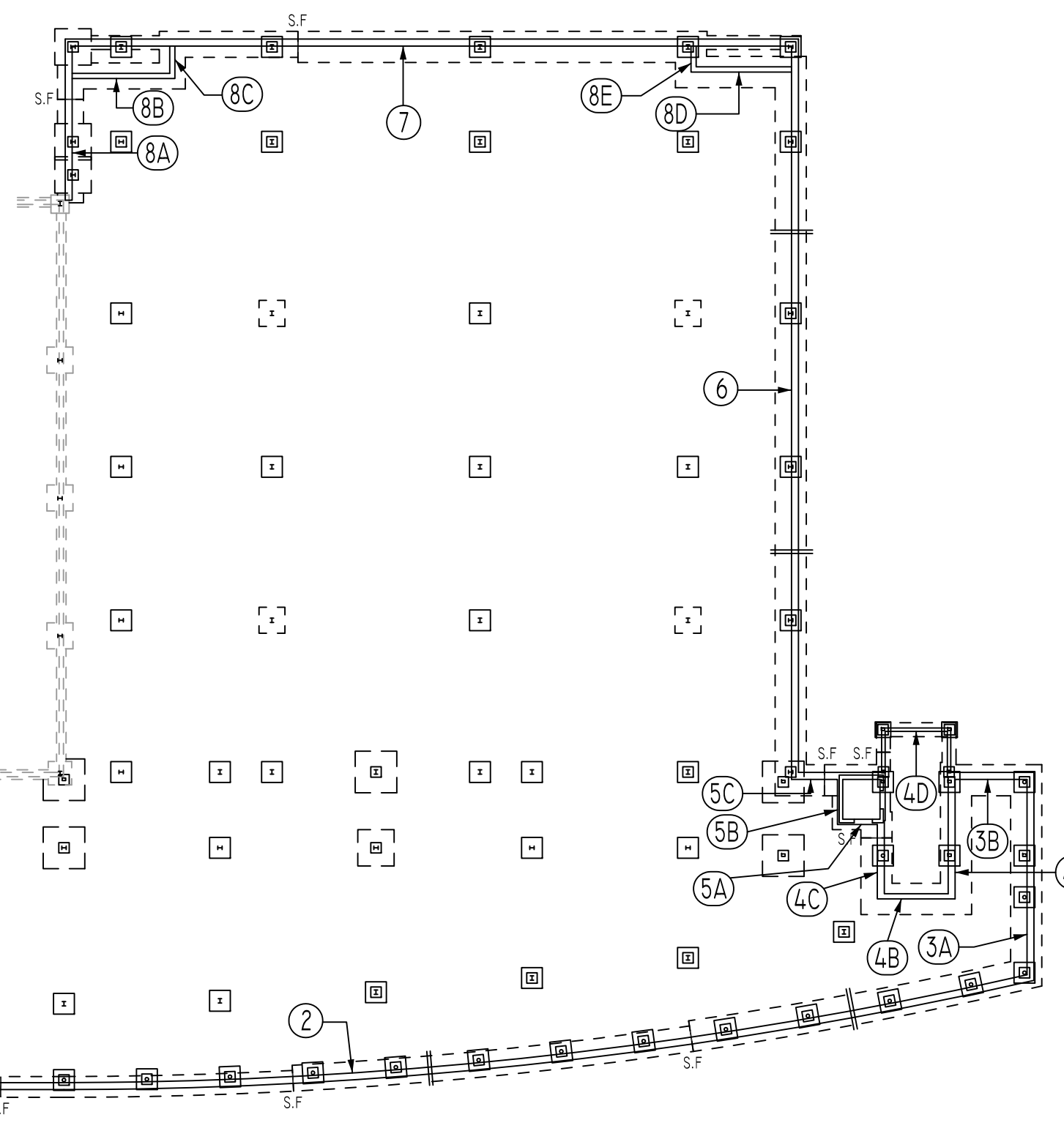
SIZE	4000 PSI	
	TOP	OTHERS
#3	24"	19"
#4	32"	25"
#5	40"	31"
#6	48"	37"
#7	70"	54"
#8	80"	62"
#9	91"	70"
#10	102"	79"
#11	113"	87"

FOOTING SCHEDULE 2.5 TON/SF

TYPE	FOOTING SIZE		BOTTOM REINFORCING (3" CLR FROM BOTTOM)
	LENGTH x WIDTH	DEPTH	
F30	3'-0"x3'-0"	1'-3"	(5) - #4 EACH WAY
F40	4'-0"x4'-0"	1'-3"	(5) - #5 EACH WAY
F50	5'-0"x5'-0"	1'-3"	(6) - #5 EACH WAY
F70	7'-0"x7'-0"	1'-9"	(8) - #6 EACH WAY
F80	8'-0"x8'-0"	1'-9"	(10) - #6 EACH WAY

Abbreviations:
I.F.=Inside Face
O.F.=Outside Face
E.F.=Each Face
DWL=Dowel
V=Vertical
H=Horizontal
C.B.=Center Bar
S.DWL=Slab Dowel
E.W.=Each Way
B/BOT=Bottom
T=Top
MDWL=Masonry Dowel
B.B.=Road Beam
ALT.=Alternate
Approx. Approximate

OPNG=Opening
BAL.=Balance
BTW=Between
CJ=Construction Joint
CLR.=CLEARANCE
CML=Concrete Masonry Unit
CONT.=Continuous
EA.=Each
Elev.=Elevation
EMB=Embedment
SW.=Short Way
LW=Long Way
(BL)=Black Bar
(EP)=Epoxy Bar
(GA)=Galvanized



KEY PLAN
REF: S1.0A & S1.0B (DT: 09/13/19)
SCALE - N.T.S.

REVISION MARK	REVISION DETAILS	DATE
0	FOR APPROVAL	10/14/2019

NOTICE
Shortages, improper fabrication or claims for any other reason must be reported to this company within a period of 15 days of delivery. This company reserves the right to field inspect prior to replacement or reconditioning of nonconforming material, and will not honor charges for work done in the field without specific authorization from this company.

REINFORCING STEEL PLACING DRAWINGS ONLY USE IN CONJUNCTION WITH CONTRACT DRAWINGS & SPECIFICATIONS. ELEVATIONS & DIMENSIONS SHOWN ON THIS DRAWING ARE FOR DETAILING PURPOSES ONLY AND SHOULD NOT BE USED FOR CONSTRUCTION UNLESS VERIFIED BY ENGINEER OR CONTRACTOR.

PROJECT	WAREHOUSE & OFFICE EXPANSION		
LOCATION	340 BAMES ROAD, WALLINGFORD, CT		
ARCHITECT	ROBERT DAY ARCHITECTS		
ENGINEER	MICHAEL HORTON ASSOC., INC.		
CUSTOMER	COMPLEX CONSTRUCTION		
DRAWN BY:	MRS	DATE:	10/14/19
REVIEWED BY:	T/L	DATE:	19/13
DRAWING TITLE:	ELEVATION & DETAILS		DRAWING NO.: R3