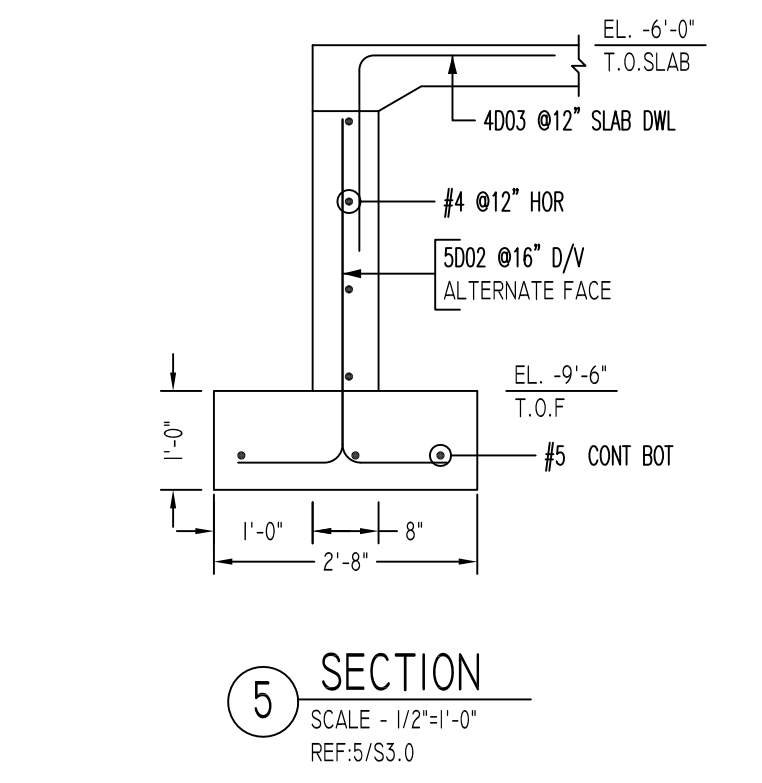
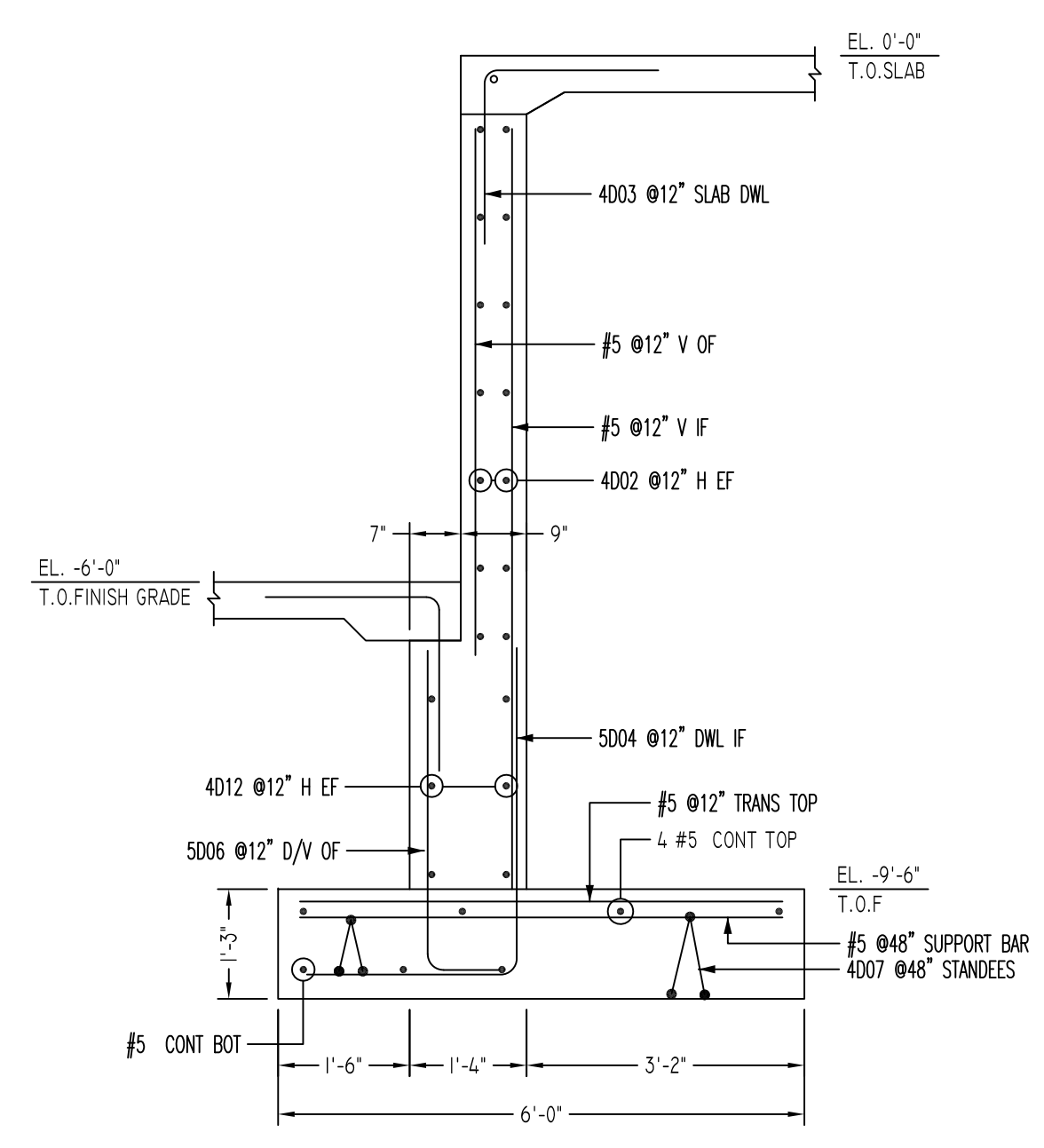
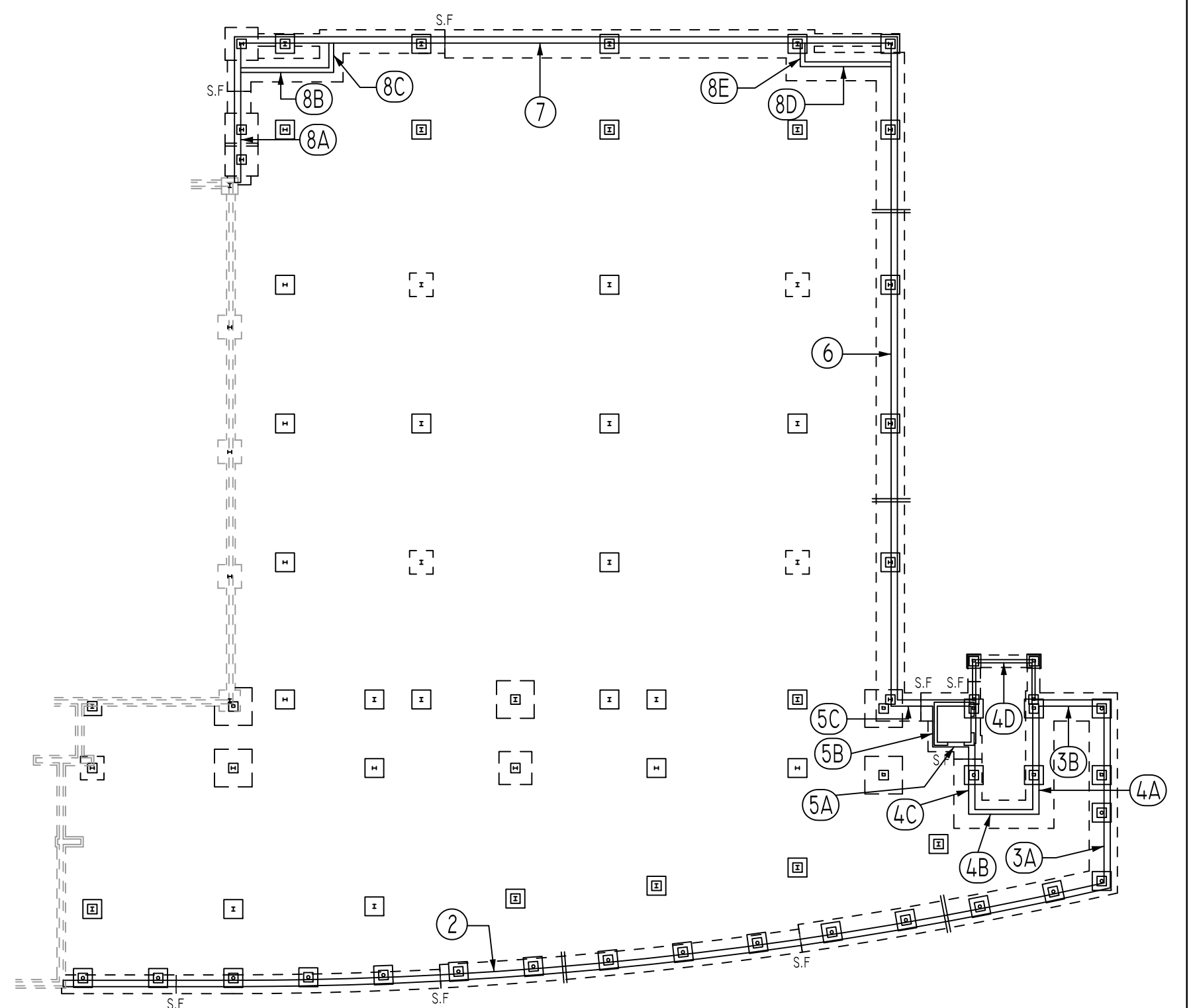


Release Code: R4

Bar Mark	Qty	Size	Total Length	Type	A'	B'	C'	D'	E'	F'	G'	H'	J'	K'	L'	M'
4001	10	#4	85'2"		8"	79"										
4002	16	#4	84'2"		8"	70"										
4003	14	#4	4'0"		20"	20"										
4004	10	#4	5'4"		28"	28"										
4005	50	#4	79'11"		4 1/2"	19"	19"	19"	19"	4 1/2"	3"					
4006	16	#4	4'11"		16"	7 1/2"	8"	7 1/2"	16"					3 1/2"		
4007	16	#4	5'7"		16"	11 1/2"	8"	11 1/2"	16"				11"		5"	
4008	1	#4	10'1"		8"	95"										
4009	1	#4	3'1"		8"	25"										
4010	30	#4	78'2"		8"	70"										
4011	16	#4	6'5"		8"	59"										
4012	30	#4	13'2"		8"	110"				8"						
5001	6	#5	71 1/2"		27"	27"	111 1/2"									
5002	15	#5	4'7"		11"	36"										
5003	7	#5	4'10"		10"	4'0"										
5004	50	#5	6'2"		25"	39"										
5005	4	#5	5'0"		10"	4'2"										
5006	46	#5	4'6"		10"	38"										
5007	6	#5	5'3"		11"	4'2"										
5008	4	#5	15'6"		14"	14'2"										
5009	3	#5	6'3"		27"	11"	27"			6 1/2"		11"	6'1"			
5010	3	#5	10'9"		8"	12 1/2"	8'10 1/2"			7"		10 1/2"	10'6 1/2"			
5011	44	#5	3'6"		10"	28"										
5012	22	#5	5'4"		28"	28"										
5013	16	#5	5'2"		27"	27"										
8001	24	#8	4'6"		14"	3'2"										
8002	8	#8	5'0"		14"	38"										



FOOTING SCHEDULE 2.5 TON/SF

TYPE	FOOTING SIZE		BOTTOM REINFORCING (3' CLR FROM BOTTOM)
	LENGTH X WIDTH	DEPTH	
F30	3'-0"x3'-0"	1'-3"	(5)- #6 EACH WAY
F40	4'-0"x4'-0"	1'-3"	(5)- #5 EACH WAY
F50	5'-0"x5'-0"	1'-3"	(6)- #5 EACH WAY
F70	7'-0"x7'-0"	1'-9"	(8)- #6 EACH WAY
F80	8'-0"x8'-0"	1'-9"	(10)- #6 EACH WAY

LAP SCHEDULE FOR FOOTINGS & FOUNDATION WALLS

SIZE	4000 PSI		OTHERS
	TOP	BOTTOM	
#3	24"	19"	
#4	32"	25"	
#5	40"	31"	
#6	48"	37"	
#7	70"	51"	
#8	80"	62"	
#9	91"	70"	
#10	102"	79"	
#11	113"	87"	

TYPICAL REINFORCING BAR CLEARANCE TABLE

LOCATION	MIN. COVER
FOOTINGS AGAINST EARTH	3" CLR
TOP	2" CLR
BOTTOM	2" CLR
COLUMNS AND PIERS (VERT. REINF.)	2" CLR
WALLS INTERIOR FACE (#5 & SMALLER)	1 1/2" CLR
WALLS INTERIOR FACE (#6 & LARGER)	2" CLR
WALLS EXTERIOR FACE (#5 & SMALLER)	1 1/2" CLR
WALLS EXTERIOR FACE (#6 & LARGER)	2" CLR

**ALL BARS IN THIS DRAWING
ASTM A615 GRADE 60
BLACK UNCOATED**

ENGINEER PLEASE VERIFY
THE LAP SCHEDULE WE FOLLOWED.
TYP.

ENGINEER PLEASE VERIFY
THE COVER DETAILS WE FOLLOWED.
TYP.

- Abbreviations:**
- IF=Inside Face
 - O.F.=Outside Face
 - E.F.=Each Face
 - DWL=Dowel
 - V=Vertical
 - H=Horizontal
 - C.B.=Center Bar
 - S.DWL.=Slab Dowel
 - E.W.=End Way
 - B/BOT.=Bottom
 - T=Top
 - MDWL.=Masonry Dowel
 - B.B.=Road Beam
 - ALT.=Alternate
 - Approx. Approximate
- OPNG=Opening**
BAL.=Balance
BTW.=Between
CJ.=Construction Joint
CLR.=Clearance
CMU.=Concrete Masonry Unit
CONT.=Continuous
EA.=Each
Elev.=Elevation
EMB.=Embedment
SW.=Short Way
LW.=Long Way
(BL)=Black Bar
(EP)=Epoxy Bar
(GA)=Galvanized

NOTICE

Shortages, improper fabrication or claims for any other reason must be reported to this company within a period of 15 days of delivery. This company reserves the right to field inspect prior to replacement or reconditioning of nonconforming material, and will not honor charges for work done in the field without specific authorization from this company.

REINFORCING STEEL PLACING DRAWINGS ONLY USE IN CONJUNCTION WITH CONTRACT DRAWINGS & SPECIFICATIONS. ELEVATIONS & DIMENSIONS SHOWN ON THIS DRAWING ARE FOR DETAILING PURPOSES ONLY AND SHOULD NOT BE USED FOR CONSTRUCTION UNLESS VERIFIED BY ENGINEER OR CONTRACTOR.

REVISION MARK	REVISION DETAILS	DATE
0	FOR APPROVAL	10/14/2019

PROJECT	WAREHOUSE & OFFICE EXPANSION						
LOCATION	340 BAMES ROAD, WALLINGFORD, CT						
ARCHITECT	ROBERT DAY ARCHITECTS						
ENGINEER	MICHAEL HORTON ASSOC., INC.						
CUSTOMER	COMPLEX CONSTRUCTION						
DRAWN BY:	MRS	DATE:	10/14/19	REVIEWED BY:	T/L	JOB NO.:	19131
DRAWING TITLE:	ELEVATION & DETAILS		DRAWING NO.:	R4			