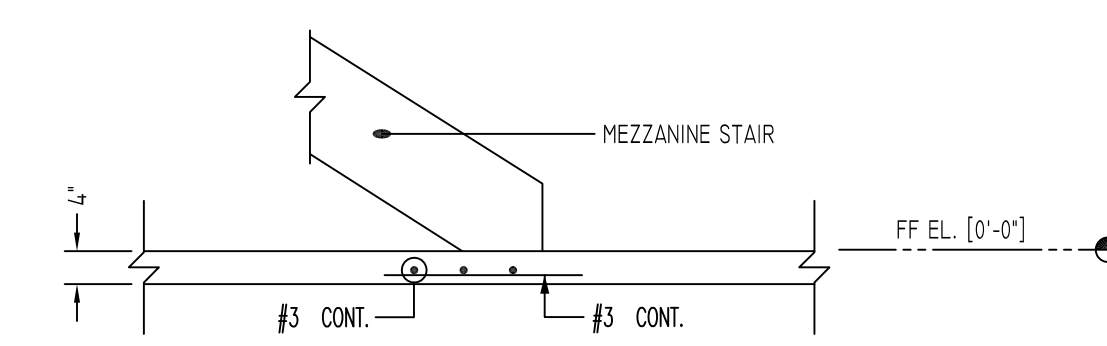
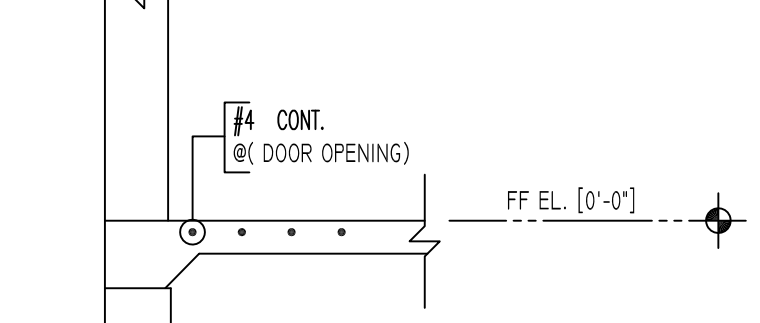


SECTION 1  
SCALE - 1/2"=1'-0"  
REF. S4



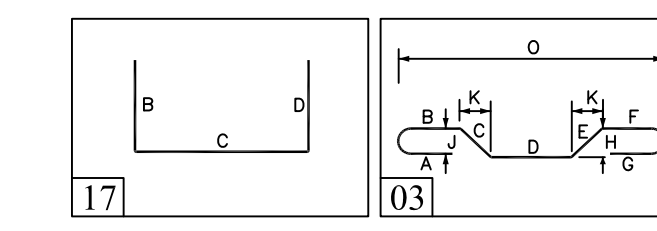
SECTION 2  
SCALE - 1/2"=1'-0"  
REF. S4



SECTION 3  
SCALE - 1/2"=1'-0"  
REF. S4

MESH DETAILS				
ELEMENT	MESH SIZE	SHEETS	AREA	REMARK
4" THK SLAB ON GRADE	6x6 - W2.IXW2.1 WWF	125	12890 SQ.FT	8'-0" X 15'-0" SHEET SIZE (15% LAP ADDED)

Release Code: R5		BENDING DETAILS.														
Bar Mark	Qty	Size	total length	Typel	'a'	'b'	'c'	'd'	'e'	'f'	'g'	'h'	'j'	'k'	'l'	'r'
3H01	13	#3	3'11 1/2"	3	16"	11 1/2"		16"				8 1/2"			8"	38"
4H01	1	#4	4'10"	1	25"	25"										



**ALL BARS IN THIS DRAWING  
ASTM A615 GRADE 60  
BLACK UNCOATED**

SIZE	3000 PSI	
	TOP	OTHERS
#3	28"	22"
#4	37"	29"
#5	47"	36"
#6	56"	43"
#7	81"	63"
#8	95"	72"
#9	105"	81"
#10	118"	91"
#11	131"	101"

FOUNDATION PLAN  
SCALE - 1/8"=1'-0"  
REF. S1, S2, S4 & S5

- Abbreviations:**  
 I.F.=Inside Face  
 O.F.=Outside Face  
 E.F.=Each Face  
 DWL=Dowel  
 V=Vertical  
 H=Horizontal  
 C.B.=Corner Bar  
 S.DWL.=Slab Dowel  
 E.W.=Each Way  
 B/BOT.=Bottom  
 T=Top  
 MDWL.=Masonry Dowel  
 B.B.=Road Beam  
 ALT.=Alternate  
 Approx. Approximate
- OPNG=Opening**  
 BAL.=Balance  
 BTW.=Between  
 C.J.=Construction Joint  
 CLR.=CLEARANCE  
 CML.= Concrete Masonry Unit  
 CONT.=Continuous  
 EA.=Each  
 Elev.=Elevation  
 EMB.=Embedment  
 SW.=Short Way  
 LW.=Long Way  
 (BL)=Black Bar  
 (EP)=Epoxy Bar  
 (GA)=Galvanized

**NOTICE**  
 Shortages, improper fabrication or claims for any other reason must be reported to this company within a period of 15 days of delivery. This company reserves the right to field inspect prior to replacement or reconditioning of nonconforming material, and will not honor charges for work done in the field without specific authorization from this company.

REINFORCING STEEL PLACING DRAWINGS ONLY USE IN CONJUNCTION WITH CONTRACT DRAWINGS & SPECIFICATIONS. ELEVATIONS & DIMENSIONS SHOWN ON THIS DRAWING ARE FOR DETAILING PURPOSES ONLY AND SHOULD NOT BE USED FOR CONSTRUCTION UNLESS VERIFIED BY ENGINEER OR CONTRACTOR.

REVISION MARK	REVISION DETAILS	DATE
0	FOR APPROVAL	10/31/2019

PROJECT	CVS PHARMACY		
LOCATION	705 BRIDGEPORT AVE., SHELTON, CT		
ARCHITECT	WILLIAM STARCK ARCHITECTS, INC.		
ENGINEER	C.A. PRETZER ASSOCIATES		
CUSTOMER	APM BUILDERS		
DRAWN BY:	MRS	DATE:	10/31/19
REVIEWED BY:	T/L	JOB NO.	19140
DRAWING TITLE:	SLAB ON GRADE REINFORCEMENT DETAILS		DRAWING NO.: R5