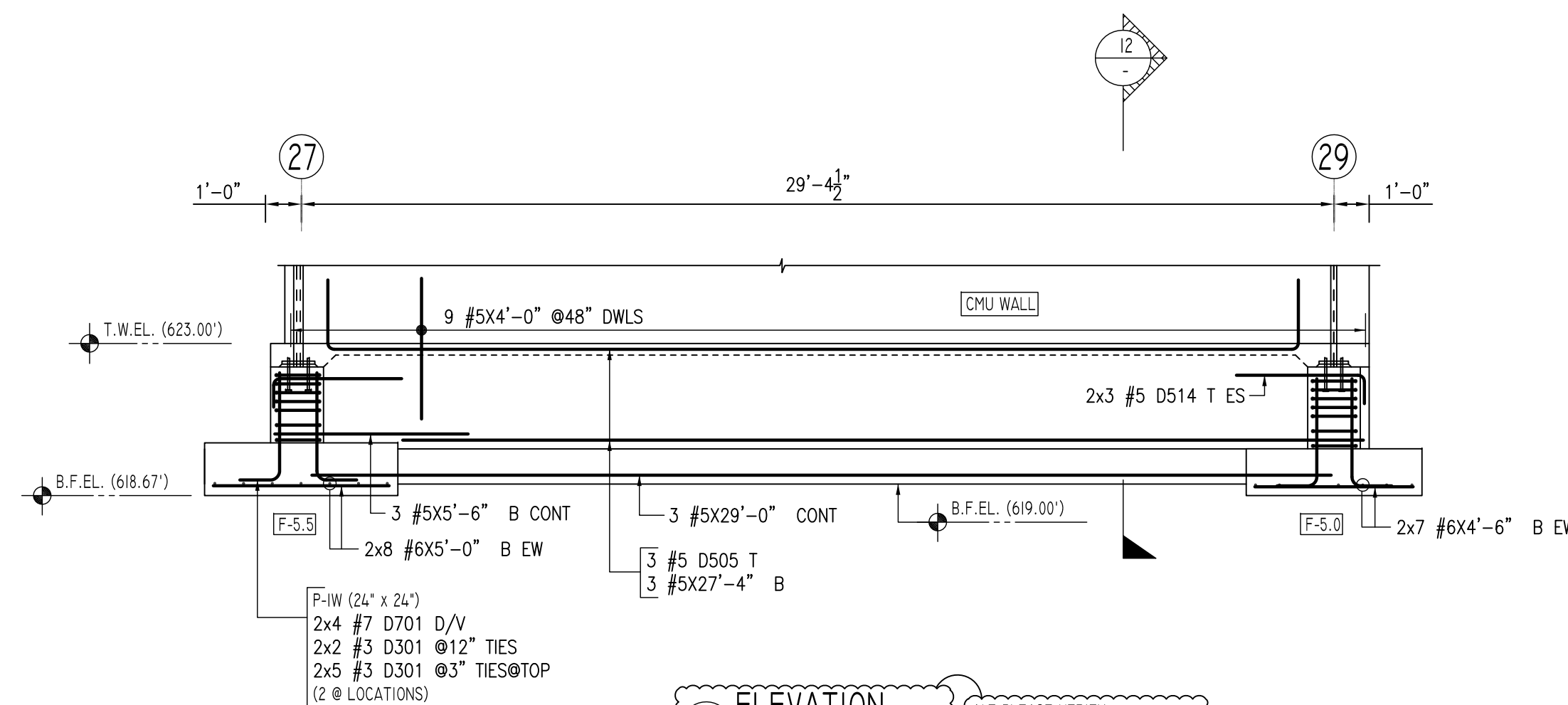
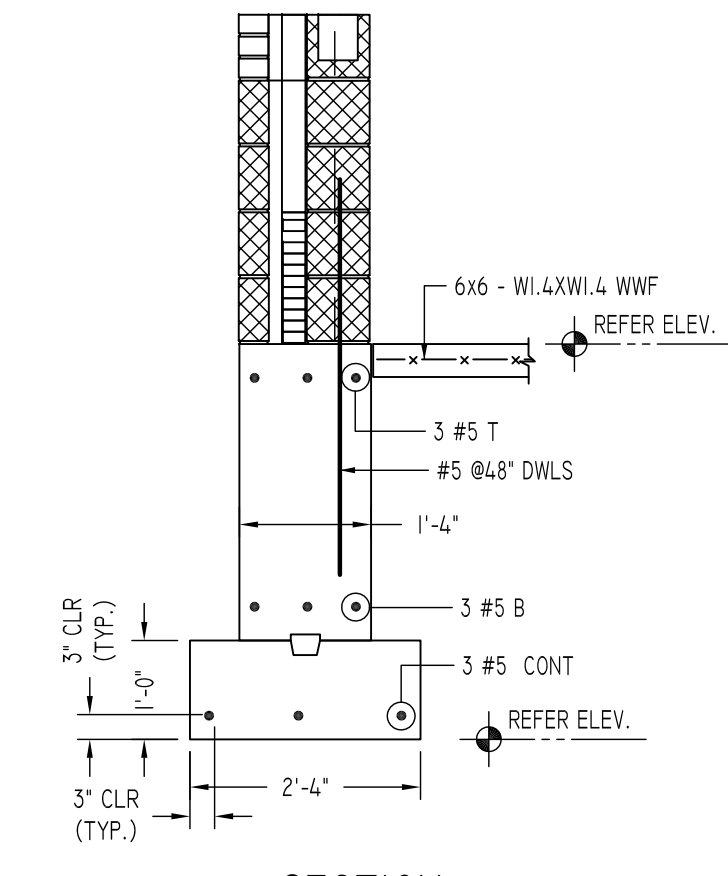


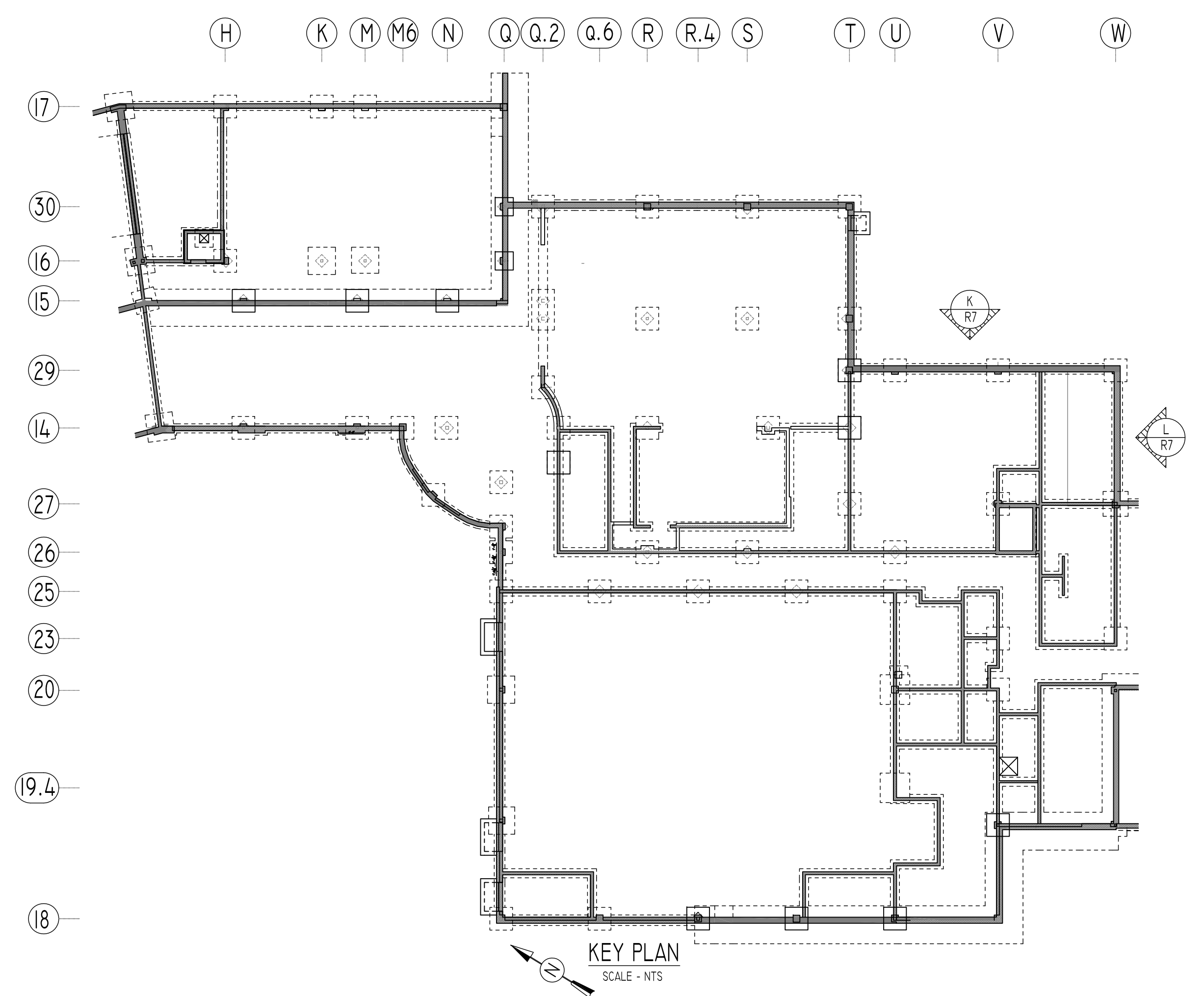
K ELEVATION
SCALE - 1/4"=1'-0"
REF: S-1.1 & S1.0B (DT: 10/18/19)
16' CONC. WALL



L ELEVATION
SCALE - 1/4"=1'-0"
REF: S-1.1 & S1.0B (DT: 10/18/19)
16' CONC. WALL



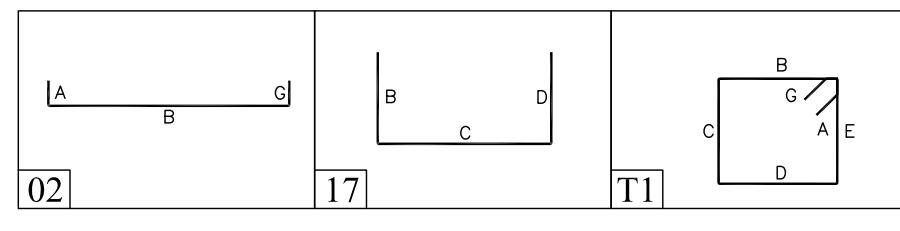
12 SECTION
SCALE - 1/2"=1'-0"
REF: F1/S4.5



KEY PLAN
SCALE - NTS

Release Code: R7

Bar Mark	Qty	Size	Total length	Type	A'	B'	C'	D'	E'	F'	G'	H'	J'	K'	O'	W'
0301	20	#3	5'8"	T1	4"	13"	13"	13"	13"				2 1/2"			
0502	3	#5	28'0"	T		20"	24'0"	20"								
0503	3	#5	24'10"	T		20"	20'10"	20"								
0504	3	#5	12'2"	T		20"	8'2"	20"								
0505	3	#5	31'8"	T		20"	27'8"	20"								
0701	16	#7	4'3"	2	12"	31"										



LAP SCHEDULE

SIZE	36 X BD
#4	18"
#5	23"
#6	27"
#7	32"

TYPICAL REINFORCING BAR CLEARANCE TABLE

LOCATION	MIN. COVER
FOOTINGS AGAINST EARTH	3" CLR
COLUMNS AND PIERS (TIES, REINF.)	1 1/2" CLR
WALLS INTERIOR FACE	1 1/2" CLR
WALLS EXTERIOR FACE (#5 & SMALLER)	1 1/2" CLR
WALLS INTERIOR FACE (#6 & LARGER)	2" CLR
WALLS EXTERIOR FACE (#6 & LARGER)	2" CLR

**ALL BARS IN THIS DRAWING
ASTM A615 GRADE 60
BLACK UNCOATED**

REVISION MARK	REVISION DETAILS	DATE
0	FOR APPROVAL	02/18/2020

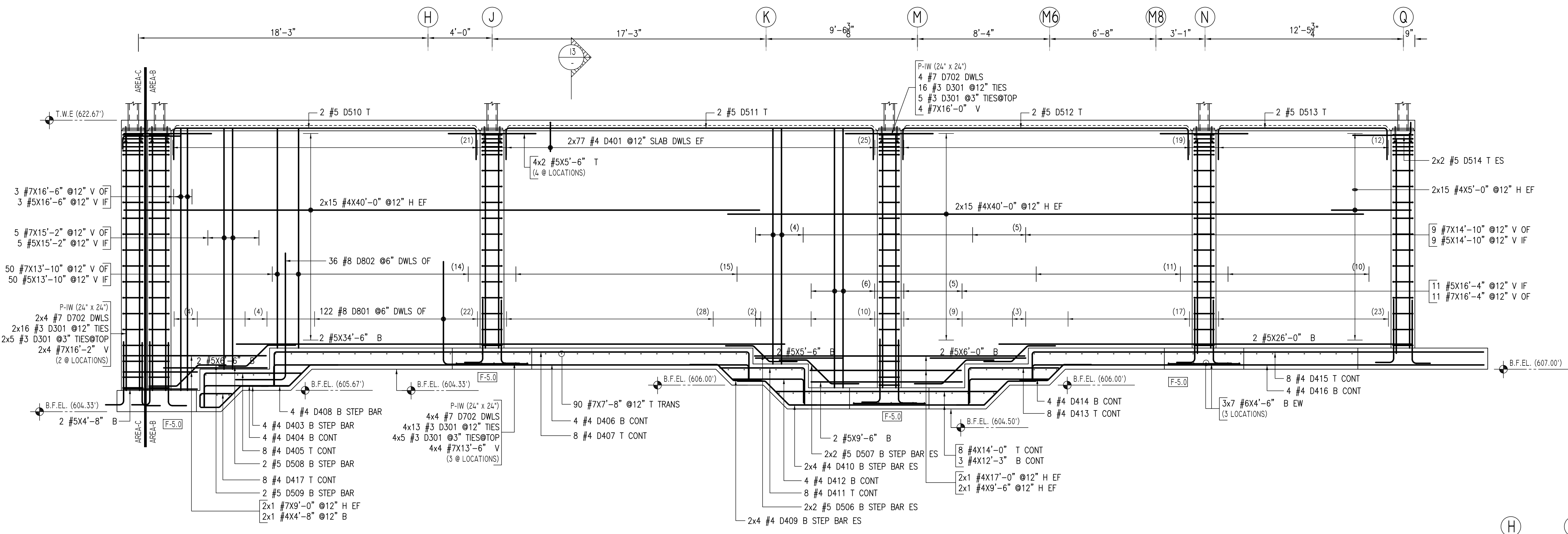
- Abbreviations:**
- IF=Inside Face
 - OF=Outside Face
 - EF=Each Face
 - DWL=Dowel
 - V=Vertical
 - H=Horizontal
 - C-B=Corner Bar
 - S-DWL=Slab Dowel
 - E-W=Each Way
 - B-BOT=Bottom
 - T=Top
 - MDWL=Masonry Dowel
 - B-B=Bond Beam
 - ALT. Alternate
 - Approx. Approximate
 - OPNG=Opening
 - BAL=Balance
 - BTW=Between
 - CJ=Construction Joint
 - CLR=CLEARANCE
 - CMU=Concrete Masonry Unit
 - CONT=Continuous
 - EA=Each
 - Elev=Elevation
 - EMB=Embedment
 - SW=Short Way
 - LW=Long Way
 - BL=Black Bar
 - EP=Epoxy Bar
 - GA=Galvanized

NOTICE

Shortages, improper fabrication or claims for any other reason must be reported to this company within a period of 15 days of delivery. This company reserves the right to field inspect prior to replacement or reconditioning of nonconforming material, and will not honor charges for work done in the field without specific authorization from this company.

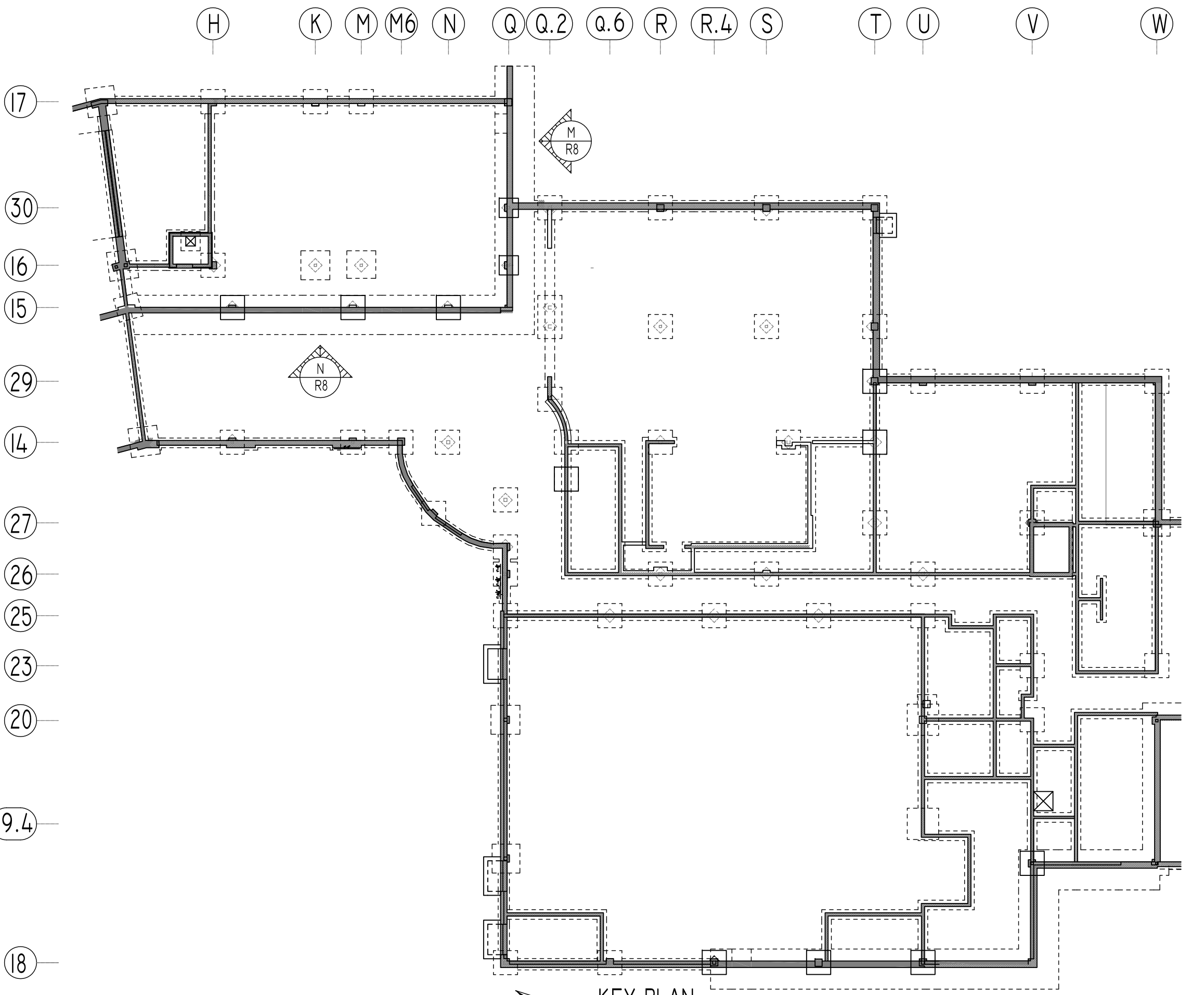
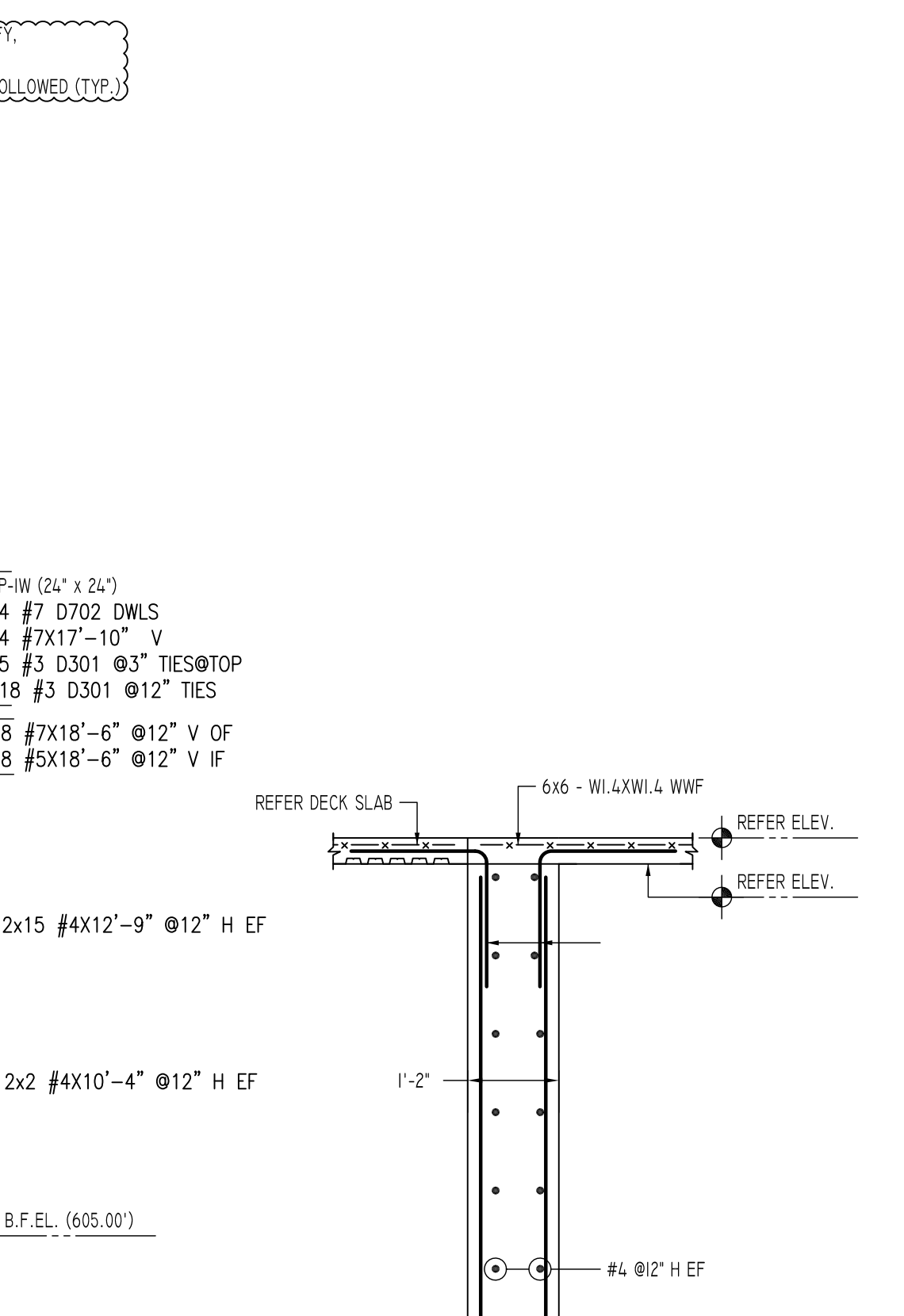
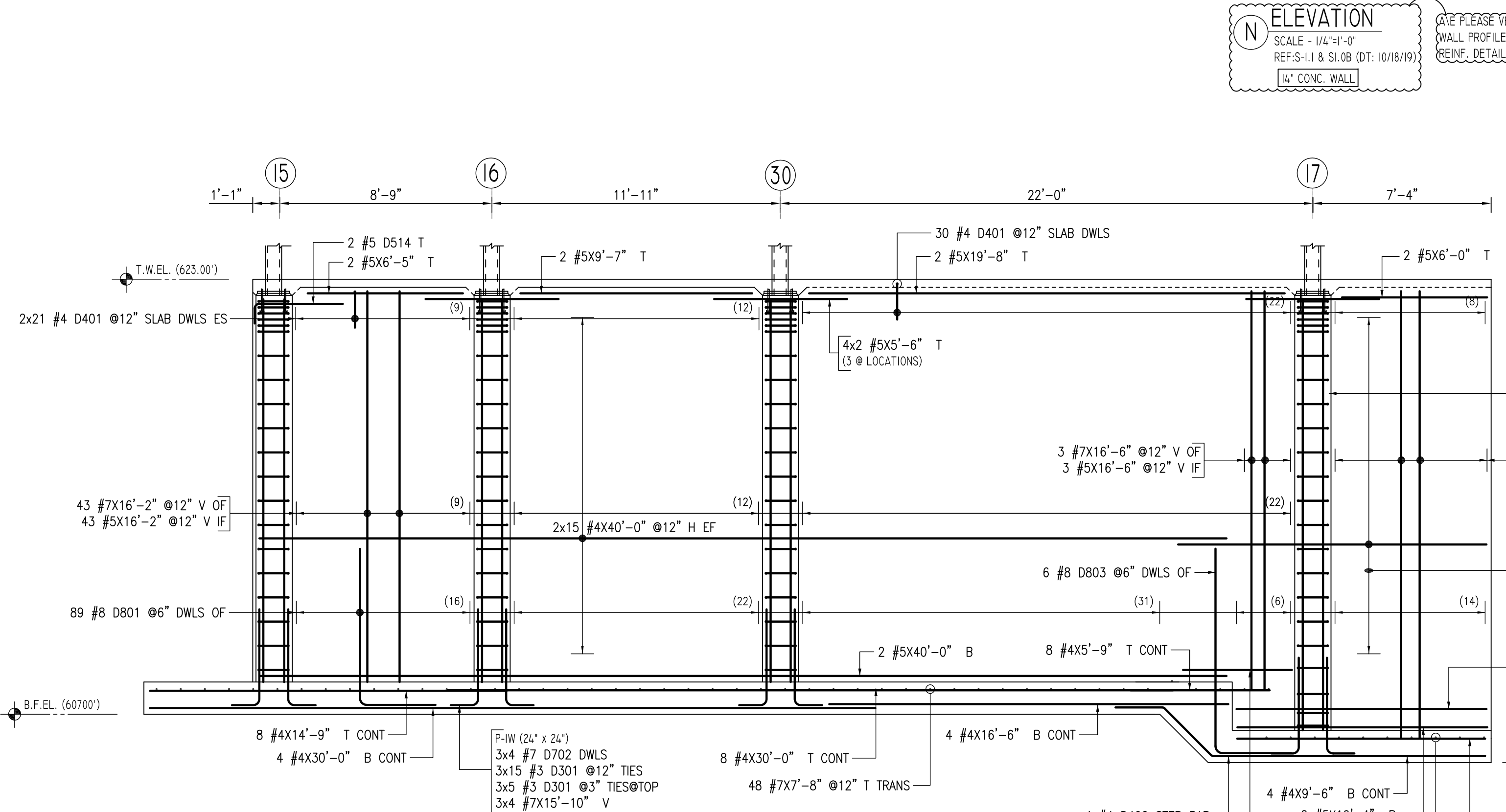
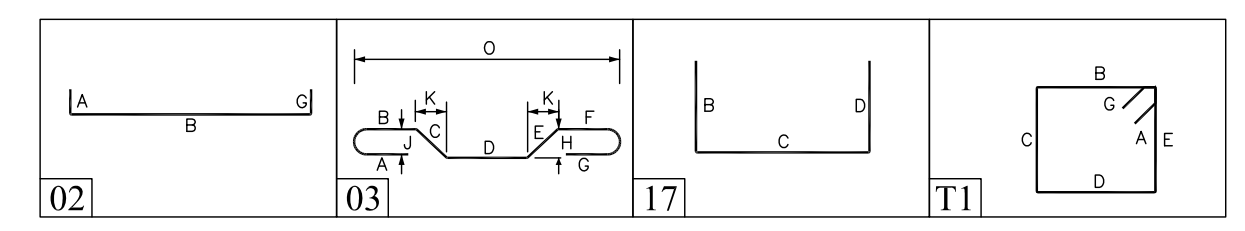
REINFORCING STEEL PLACING DRAWINGS ONLY USE IN CONJUNCTION WITH CONTRACT DRAWINGS & SPECIFICATIONS. ELEVATIONS & DIMENSIONS SHOWN ON THIS DRAWING ARE FOR DETAILING PURPOSES ONLY AND SHOULD NOT BE USED FOR CONSTRUCTION UNLESS VERIFIED BY ENGINEER OR CONTRACTOR.

PROJECT	WENDELL CROSS ELEMENTARY SCHOOL		
LOCATION	WATERBURY, CONNECTICUT		
ARCHITECT	-		
ENGINEER	SZEWCZAK ASSOCIATES		
CUSTOMER	G&G CONCRETE		
DRAWN BY:	KAS/MRS	DATE:	02/18/20
REVIEWED BY:	T/L	JOB NO.:	20009
DRAWING TITLE:	AREA-A FOUNDATION WALL ELEVATION K & L REINF. DETAIL		DRAWING NO.:
			R7



Release Code: R8

Bar Mark	Qty	Size	Total length	Type	A'	B'	C'	D'	E'	F'	G'	H'	I'	J'	K'	L'	M'	N'
D301	28	#3	58'11"		4'	13'	13'											
D401	226	#4	34'17"		16'	110'												
D402	4	#4	6'10'3"		20'	2'10'	20'								20'8"		11'8"	5'11'8"
D403	4	#4	4'9'8"		12'	110'8"	19'								14'8"		13'8"	4'2'8"
D404	4	#4	6'8'17"		14'	54'												
D405	8	#4	8'3'17"		21'	62'												
D406	4	#4	3'3'17"		10'	29'11"	14'											
D407	8	#4	3'9'17"		19'	29'11"	21'											
D408	4	#4	5'4'8"		19'	110'8"	19'								14'8"		13'8"	4'9'8"
D409	8	#4	4'11'3"		19'	15'	19'								10'8"		11'8"	4'5'8"
D410	8	#4	5'7'8"		19'	21'8"	19'								16'8"		15'8"	4'11'8"
D411	8	#4	7'8'17"		24'	54'												
D412	4	#4	6'0'17"		16'	4'6"												
D413	8	#4	8'0'17"		24'	58'												
D414	4	#4	6'6'17"		16'	50'												
D415	8	#4	3'0'2'17"		19'	28'5"												
D416	4	#4	2'9'5'17"		10'	28'5"												
D417	8	#4	2'10'17"		10'	2'0"												
D506	4	#5	4'11'3"		19'	15'	19'								10'8"		11'8"	4'5'8"
D507	4	#5	5'7'8"		19'	21'8"	19'								16'8"		15'8"	4'11'8"
D508	2	#5	5'4'8"		19'	110'8"	19'								14'8"		13'8"	4'9'8"
D509	2	#5	5'4'8"		19'	110'8"	19'								14'8"		13'8"	4'9'8"
D510	2	#5	2'3'17"		20'	19'1"	20'											
D511	2	#5	2'7'2'17"		20'	23'2"	20'											
D512	2	#5	2'2'0'17"		20'	18'0"	20'											
D513	2	#5	1'8'17"		20'	10'8"	20'											
D514	6	#5	4'6'2"		10'	3'8"												
D702	44	#7	5'2'2"		12'	4'0"												
D801	211	#8	9'8'17"		32'	6'6"												
D802	36	#8	11'2'17"		32'	8'0"												
D803	6	#8	11'8'17"		32'	8'6"												



LAP SCHEDULE

SIZE	56 X BD	LAP
#4		18"
#5		23"
#6		27"
#7		32"

TYPICAL REINFORCING BAR CLEARANCE TABLE

LOCATION	MIN. COVER
FOOTINGS AGAINST EARTH	3" CLR
COLUMNS AND PIERS (TIES, REINF.)	1 1/2" CLR
WALLS INTERIOR FACE	1 1/2" CLR
WALLS EXTERIOR FACE (#5 & SMALLER)	1 1/2" CLR
WALLS INTERIOR FACE (#6 & LARGER)	2" CLR
WALLS EXTERIOR FACE (#6 & LARGER)	2" CLR

ALL BARS IN THIS DRAWING
ASTM A615 GRADE 60
BLACK UNCOATED

AVE PLEASE VERIFY
COVER VALUE (TYP.)

AVE PLEASE VERIFY
COVER VALUE (TYP.)

- Abbreviations:
- IF=Inside Face
 - OF=Outside Face
 - EF=Each Face
 - DWL=Dowel
 - V=Vertical
 - H=Horizontal
 - C-B=Corner Bar
 - S-DWL=Slab Dowel
 - E-W=Each Way
 - B-BOT=Bottom
 - T=Top
 - MDWL=Masonry Dowel
 - B-B=Bond Beam
 - ALT=Alternate
 - Approx=Approximate
 - OPNG=Opening
 - BAL=Balance
 - BTW=Between
 - CJ=Construction Joint
 - CLR=CLEARANCE
 - CMU=Concrete Masonry Unit
 - CONT=Continuous
 - EA=Each
 - Elev=Elevation
 - EMB=Embedment
 - SW=Short Way
 - LW=Long Way
 - BL=Black Bar
 - EP= epoxy Bar
 - GA=Galvanized

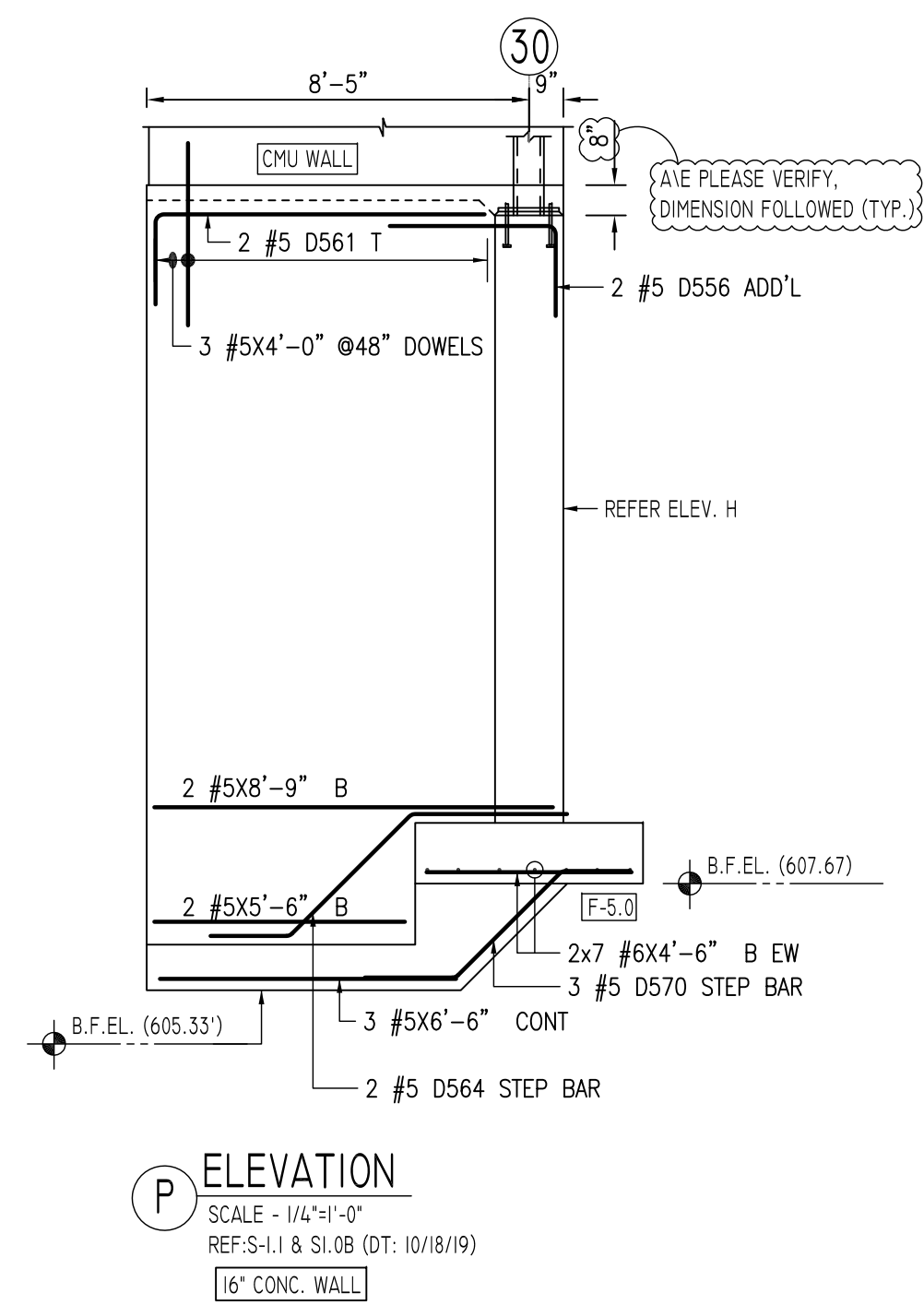
NOTICE

Shortages, improper fabrication or claims for any other reason must be reported to this company within a period of 15 days of delivery. This company reserves the right to field inspect prior to replacement or reconditioning of nonconforming material, and will not honor charges for work done in the field without specific authorization from this company.

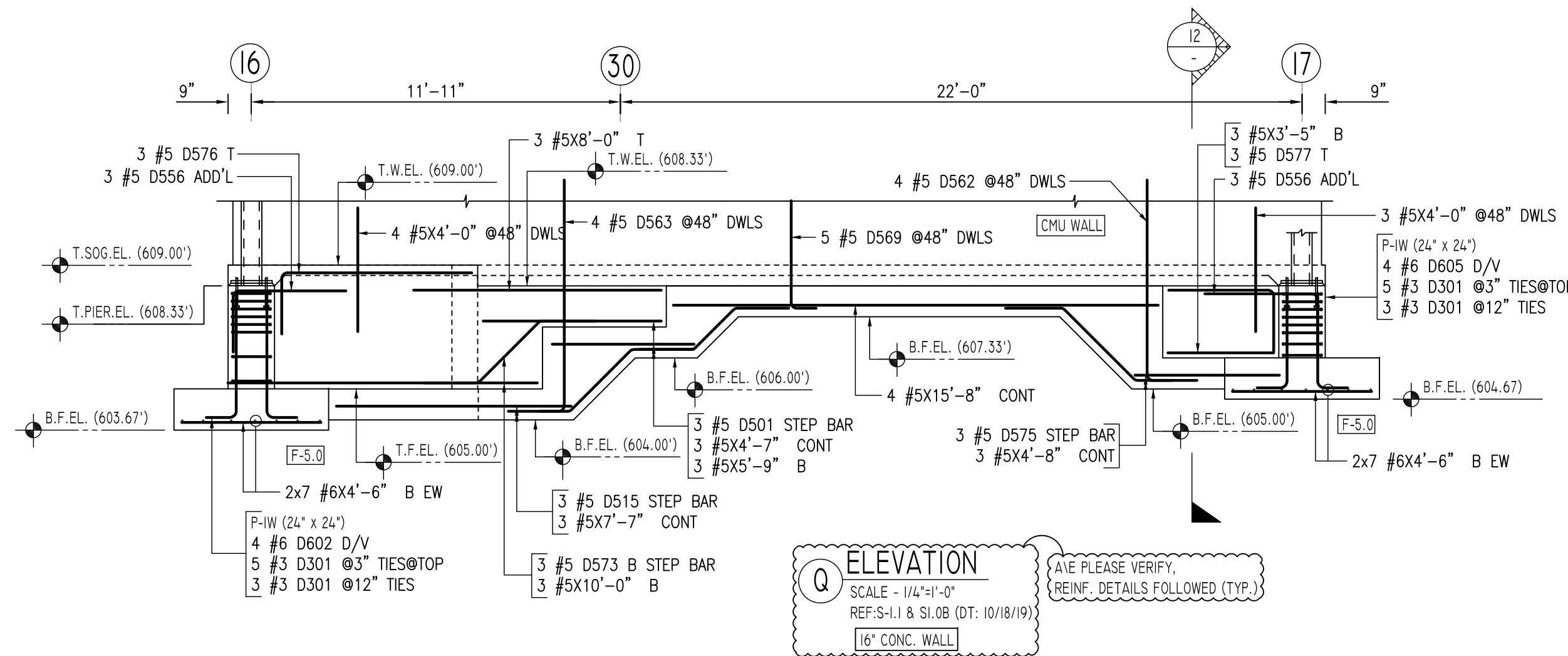
REINFORCING STEEL PLACING DRAWINGS ONLY USE IN CONJUNCTION WITH CONTRACT DRAWINGS & SPECIFICATIONS. ELEVATIONS & DIMENSIONS SHOWN ON THIS DRAWING ARE FOR DETAILING PURPOSES ONLY AND SHOULD NOT BE USED FOR CONSTRUCTION UNLESS VERIFIED BY ENGINEER OR CONTRACTOR.

REVISION MARK	REVISION DETAILS	DATE
0	FOR APPROVAL	02/18/2020

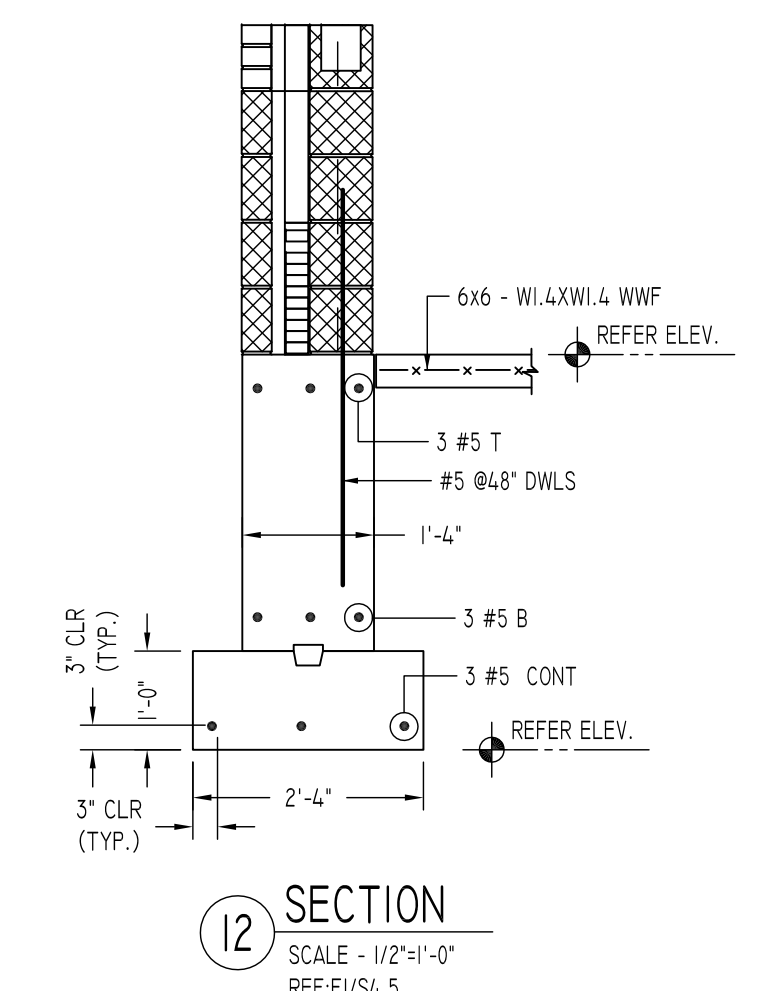
PROJECT	WENDELL CROSS ELEMENTARY SCHOOL							
LOCATION	WATERBURY, CONNECTICUT							
ARCHITECT	-							
ENGINEER	SZEWCAK ASSOCIATES							
CUSTOMER	G&G CONCRETE							
DRAWN BY:	KAS/MRS	DATE:	02/18/20	REVIEWED BY:	T/L	JOB NO.:	20009	
DRAWING TITLE:	AREA-A FOUNDATION WALL ELEVATION M & N REINF. DETAIL						DRAWING NO.:	R8



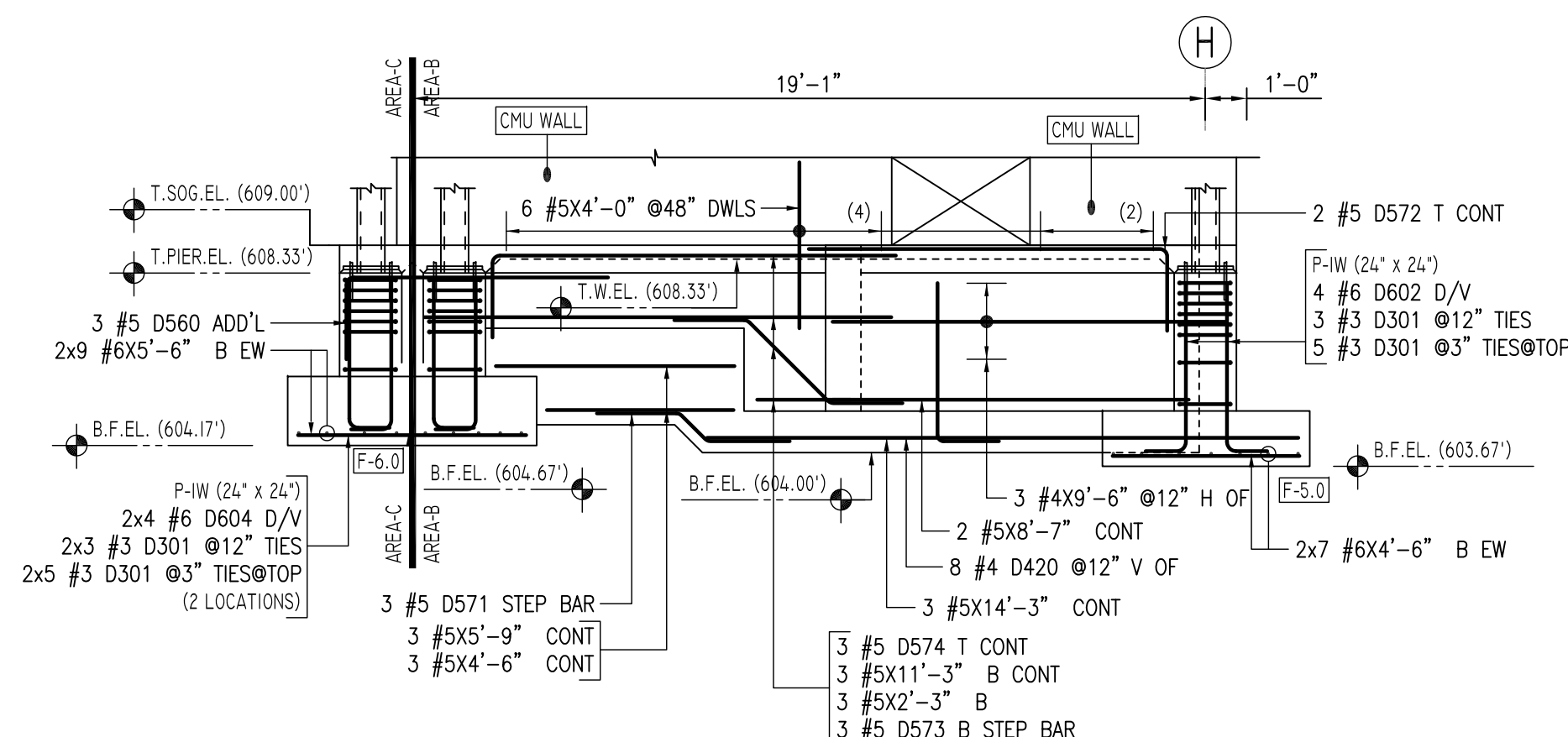
P ELEVATION
SCALE - 1/4"=1'-0"
REF-S-1.1 & S-1.0B (DT: 10/18/19)
16" CONC. WALL



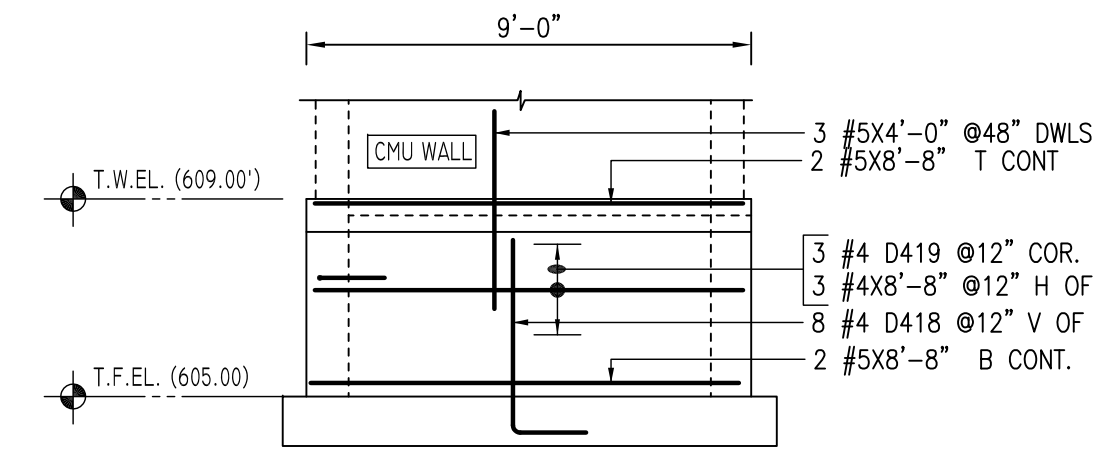
Q ELEVATION
SCALE - 1/4"=1'-0"
REF-S-1.1 & S-1.0B (DT: 10/18/19)
16" CONC. WALL



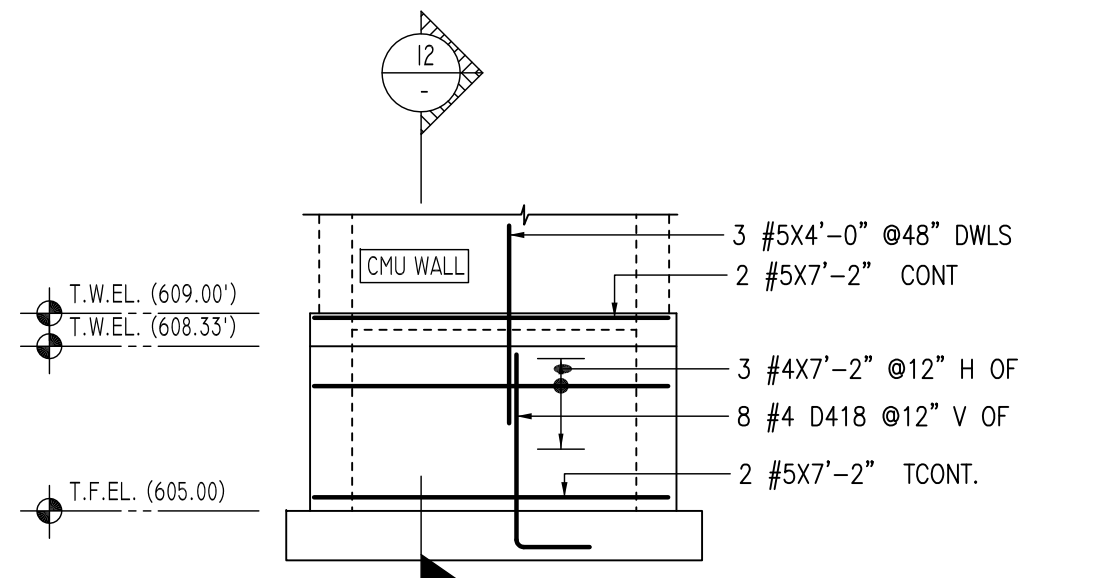
12 SECTION
SCALE - 1/2"=1'-0"
REF-F/54.5



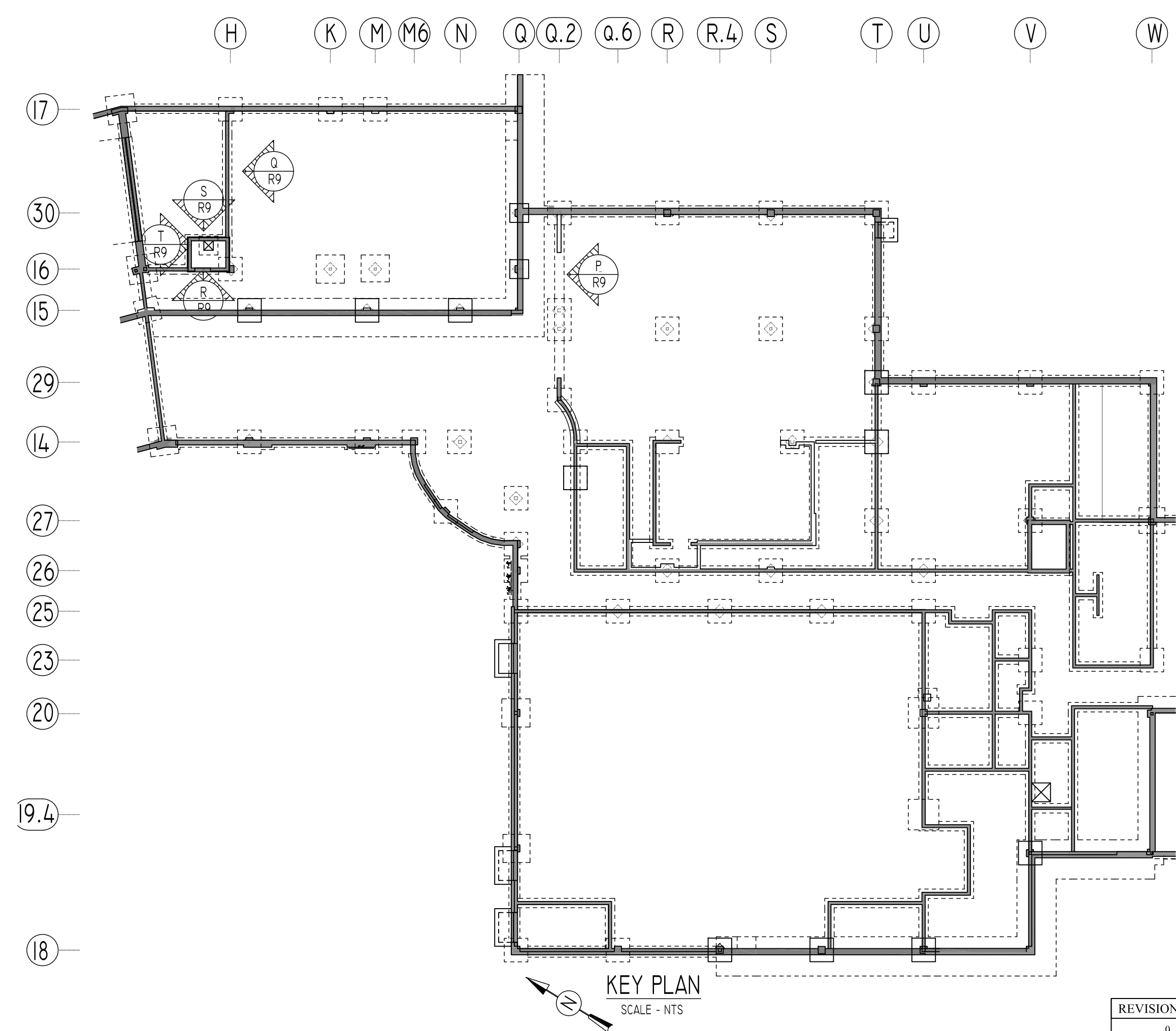
R ELEVATION
SCALE - 1/4"=1'-0"
REF-S-1.1 & S-1.0B (DT: 10/18/19)
10" CONC. WALL



S ELEVATION
SCALE - 1/4"=1'-0"
REF-S-1.1 & S-1.0B (DT: 10/18/19)
10" CONC. WALL



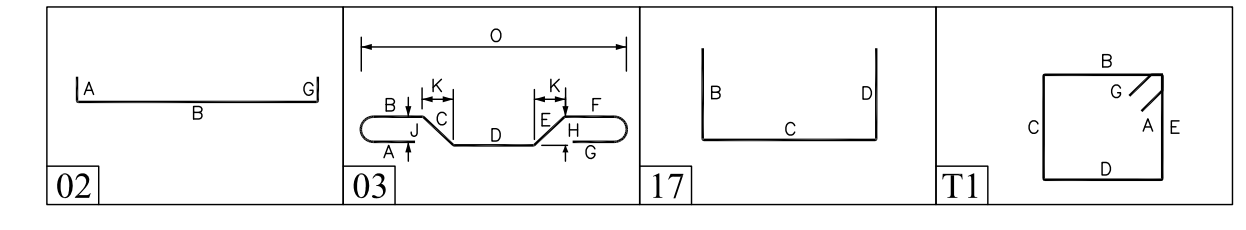
T ELEVATION
SCALE - 1/4"=1'-0"
REF-S-1.1 & S-1.0B (DT: 10/18/19)
10" CONC. WALL



KEY PLAN
SCALE - NTS

Release Code: R9

Bar Mark	Qty	Size	Total length	Type	A'	B'	C'	D'	E'	F'	G'	H'	I'	J'	K'	L'
D301	40	#3	58'	T1	4"	13"	13"	13"	13"			4"	2 1/2"			
D418	16	#4	55'	T1		16"	3'11"									
D419	3	#4	28'	T1		14"	14"									
D420	8	#4	54'	T1		16"	3'10"									
D501	3	#5	54 1/2'	3	19'	1'10 1/2"	19'					14 1/2"	13 1/2"	4'9 1/2"		
D515	3	#5	6'10"	3	2'0"	2'10"	2'0"					2'0 1/2"	1'11 1/2"	5'11 1/2"		
D556	8	#5	58'	T1		2'0"	3'8"									
D560	3	#5	84'	T1		2'0"	6'4"									
D561	2	#5	93'	T1		2'0"	7'3"									
D562	4	#5	74'	2	10"		6'6"									
D563	4	#5	84'	2	10"		7'6"									
D564	2	#5	8'11 1/2'	3		35"	3'9 1/2"	19"				2'8 1/2"	2'7 1/2"	7'9 1/2"		
D569	5	#5	4'4"	2	10"		3'6"									
D570	3	#5	6'10"	3	16"	3'4"	2'0"					2'4 1/2"	2'3 1/2"	5'9 1/2"		
D571	3	#5	4'11 1/2'	3		2'0"	1'1 1/2"	2'0"				8 1/2"	7 1/2"	4'7 1/2"		
D572	2	#5	10'8"	T1		2'0"	8'8"									
D573	6	#5	64 1/2'	3	19 1/2"	2'10"	19"					2'0 1/2"	1'11 1/2"	5'5 1/2"		
D574	3	#5	11'9"	T1		2'0"	9'9"					2'4 1/2"	2'3 1/2"	6'2"		
D575	3	#5	7'2 1/2'	3	1'10 1/2"	3'3 1/2"	2'0"					2'4 1/2"	2'3 1/2"	6'2"		
D576	3	#5	8'2"	T1		2'0"	6'2"									
D577	3	#5	5'5"	T1		2'0"	3'5"									
D602	8	#6	5'1'	2	10"	4'1"										
D604	8	#6	4'7 1/2'	2	10"	3'7 1/2"										
D605	4	#6	4'1'	2	10"	3'1"										



LAP SCHEDULE

SIZE	36 X BD
#4	18"
#5	23"
#6	27"
#7	32"

TYPICAL REINFORCING BAR CLEARANCE TABLE

LOCATION	MIN. COVER
FOOTINGS AGAINST EARTH	3" CLR
COLUMNS AND PIERS (TIES, REINF.)	1 1/2" CLR
WALLS INTERIOR FACE	1 1/2" CLR
WALLS EXTERIOR FACE (#5 & SMALLER)	1 1/2" CLR
WALLS INTERIOR FACE (#6 & LARGER)	2" CLR
WALLS EXTERIOR FACE (#6 & LARGER)	2" CLR

**ALL BARS IN THIS DRAWING
ASTM A615 GRADE 60
BLACK UNCOATED**

Abbreviations:
 IF=Inside Face
 OF=Outside Face
 EF=Each Face
 DWL=Dowel
 V=Vertical
 H=Horizontal
 C-B=Corner Bar
 S-DWL=Slab Dowel
 E-W=Each Way
 B-BOT=Bottom
 T=Top
 MDWL=Masonry Dowel
 B-B=Bond Beam
 ALT.=Alternate
 Approx.=Approximate

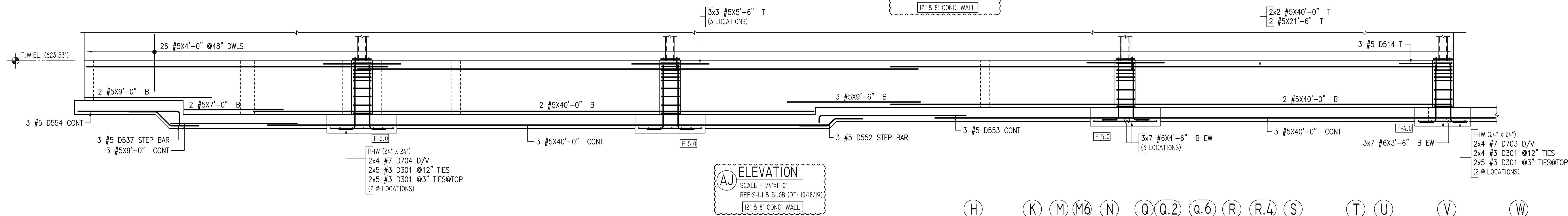
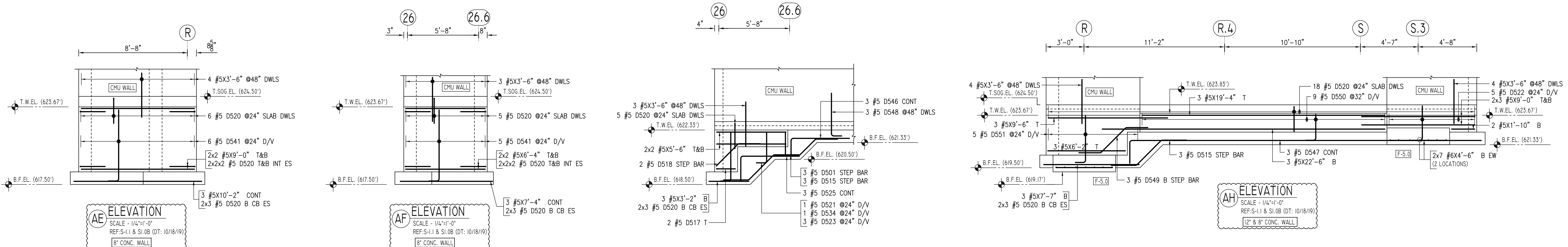
OPNG=Opening
 BAL.=Balance
 BTW=Between
 C-J=Construction Joint
 CLR.=CLEARANCE
 CMU=Concrete Masonry Unit
 CONT.=Continuous
 EA.=Each
 Elev.=Elevation
 EMB=Embedment
 SW=Short Way
 LW=Long Way
 (BL)=Black Bar
 (EP)=Epoxy Bar
 (GA)=Galvanized

NOTICE
 Shortages, improper fabrication or claims for any other reason must be reported to this company within a period of 15 days of delivery. This company reserves the right to field inspect prior to replacement or reconditioning of nonconforming material, and will not honor charges for work done in the field without specific authorization from this company.

REINFORCING STEEL PLACING DRAWINGS ONLY USE IN CONJUNCTION WITH CONTRACT DRAWINGS & SPECIFICATIONS. ELEVATIONS & DIMENSIONS SHOWN ON THIS DRAWING ARE FOR DETAILING PURPOSES ONLY AND SHOULD NOT BE USED FOR CONSTRUCTION UNLESS VERIFIED BY ENGINEER OR CONTRACTOR.

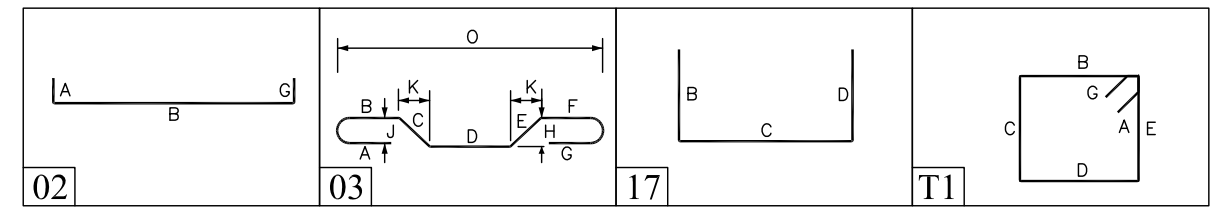
REVISION MARK	REVISION DETAILS	DATE
0	FOR APPROVAL	02/18/2020

PROJECT	WENDELL CROSS ELEMENTARY SCHOOL
LOCATION	WATERBURY, CONNECTICUT
ARCHITECT	-
ENGINEER	SZEWCAK ASSOCIATES
CUSTOMER	G&G CONCRETE
DRAWN BY:	KAS/MRS
DATE:	02/18/20
REVIEWED BY:	T/L
JOB NO.	20009
DRAWING NO.:	AREA-A FOUNDATION WALL ELEVATION P TO T REINF. DETAIL
	R9



Release Code: R12

BENDING DETAILS.		A'	B'	C'	D'	E'	F'	G'	H'	I'	J'	K'	L'	M'
D301	38 #3	5'8"	11"	4"	13"	13"	13"	13"	4"	2 1/2"		13 1/2"	4'9 1/2"	
D501	3 #5	5'4 1/2"	13"	19"	110 1/2"	19"				14 1/2"		13 1/2"	4'9 1/2"	
D514	3 #5	4'6 1/2"	17"	10"	3'8"									
D515	6 #5	6'10 1/2"	13"	2'0"	2'0"	2'0"				2'0 1/2"		1'10 1/2"	5'11 1/2"	
D517	2 #5	3'6 1/2"	17"	16"	2'0"									
D518	2 #5	4'3 1/2"	13"	19"	2'6"					1'9 1/2"		1'9 1/2"	3'6 1/2"	
D520	7 #5	4'0"	17"	2'0"	2'0"									
D521	1 #5	2'9 1/2"	17"	10"	1'11"									
D522	5 #5	3'7 1/2"	17"	10"	2'9"									
D523	3 #5	4'9 1/2"	17"	10"	3'11"									
D525	3 #5	6'8 1/2"	17"	2'0"	4'8"									
D534	1 #5	3'3 1/2"	17"	10"	2'5"									
D537	3 #5	5'5 1/2"	13"	2'0"	15 1/2"	2'0"				10 1/2"		11 1/2"	4'11 1/2"	
D541	11 #5	6'6 1/2"	17"	10"	5'8"									
D546	3 #5	6'0 1/2"	17"	14"	4'8"									
D547	3 #5	2'9 1/2"	17"	10"	1'10"	2'8 1/2"								
D548	3 #5	4'3 1/2"	17"	10"	3'5"									
D549	3 #5	6'4 1/2"	13"	19"	2'10"	1'9"				2'0 1/2"		1'10 1/2"	5'5 1/2"	
D550	9 #5	2'11 1/2"	17"	10"	2'1"									
D551	5 #5	4'7 1/2"	17"	10"	3'9"					6 1/2"		5 1/2"	4'5 1/2"	
D552	3 #5	4'8 1/2"	13"	2'0"	8 1/2"	2'0"								
D553	3 #5	1'10 1/2"	17"	10"	6"	10'6"								
D554	3 #5	8'3 1/2"	17"	10"	7'3"									
D103	8 #7	5'3 1/2"	17"	12"	4'1"									
D104	8 #7	5'9 1/2"	17"	12"	4'7"									



LAP SCHEDULE

SIZE	36 X BD
#4	18"
#5	23"
#6	27"
#7	32"

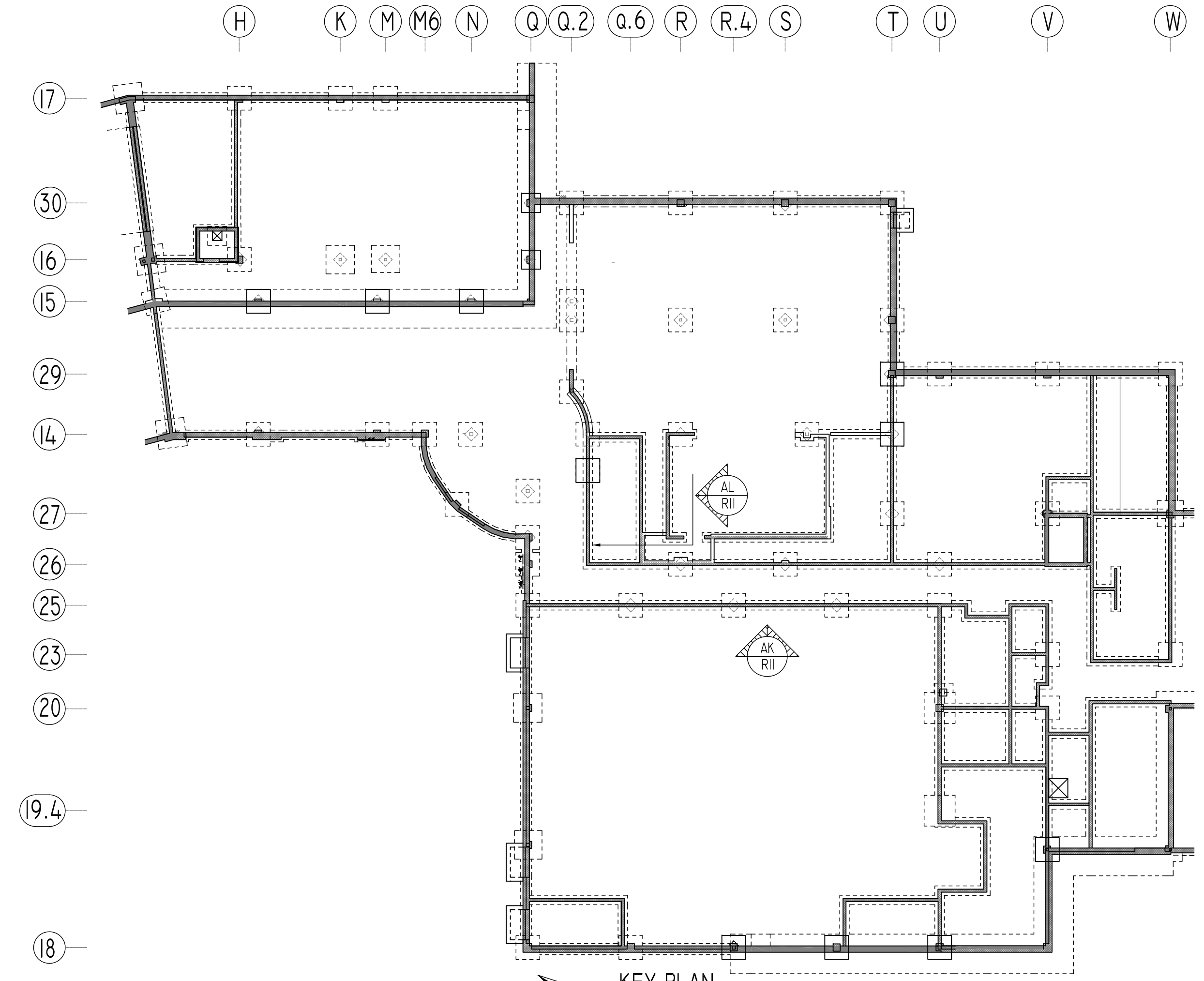
A/E PLEASE VERIFY LAP VALUE (TYP.)

TYPICAL REINFORCING BAR CLEARANCE TABLE

LOCATION	MIN. COVER
FOOTINGS AGAINST EARTH	3" CLR
COLUMNS AND PIERS (TIES, REINF.)	1 1/2" CLR
WALLS INTERIOR FACE	1 1/2" CLR
WALLS EXTERIOR FACE (#5 & SMALLER)	1 1/2" CLR
WALLS INTERIOR FACE (#6 & LARGER)	2" CLR
WALLS EXTERIOR FACE (#6 & LARGER)	2" CLR

A/E PLEASE VERIFY COVER VALUE (TYP.)

ALL BARS IN THIS DRAWING
ASTM A615 GRADE 60
BLACK UNCOATED



Abbreviations:

IF=Inside Face	OPNG=Opening
OF=Outside Face	BAL=Balance
EF=Each Face	BTW=Between
DWL=Dowel	CJ=Construction Joint
V=Vertical	CLR=CLEARANCE
H=Horizontal	CMU=Concrete Masonry Unit
C-B=Corner Bar	CONT=Continuous
S-DWL=Slab Dowel	EA=Each
E-W=Each Way	Elev=Elevation
B-BOT=Bottom	EMB=Embedment
T=Top	SW=Short Way
MDWL=Masonry Dowel	LW=Long Way
B-B=Bond Beam	BL=Black Bar
ALT=Alternate	EP=Epoxy Bar
Approx=Approximate	(GA)=Galvanized

NOTICE
Shortages, improper fabrication or claims for any other reason must be reported to this company within a period of 15 days of delivery. This company reserves the right to field inspect prior to replacement or reconditioning of nonconforming material, and will honor charges for work done in the field without specific authorization from this company.

REINFORCING STEEL PLACING DRAWINGS ONLY USE IN CONJUNCTION WITH CONTRACT DRAWINGS & SPECIFICATIONS. ELEVATIONS & DIMENSIONS SHOWN ON THIS DRAWING ARE FOR DETAILING PURPOSES ONLY AND SHOULD NOT BE USED FOR CONSTRUCTION UNLESS VERIFIED BY ENGINEER OR CONTRACTOR.

REVISION MARK	REVISION DETAILS	DATE
0	FOR APPROVAL	02/18/2020

PROJECT	WENDELL CROSS ELEMENTARY SCHOOL		
LOCATION	WATERBURY, CONNECTICUT		
ARCHITECT	-		
ENGINEER	SZEWCZAK ASSOCIATES		
CUSTOMER	G&G CONCRETE		
DRAWN BY:	DATE:	REVIEWED BY:	JOB NO.
KAS/MRS	02/18/20	T/L	20009
DRAWING TITLE:	AREA-A FOUNDATION WALL ELEVATION U TO Z REINF. DETAIL		DRAWING NO.:
			R13