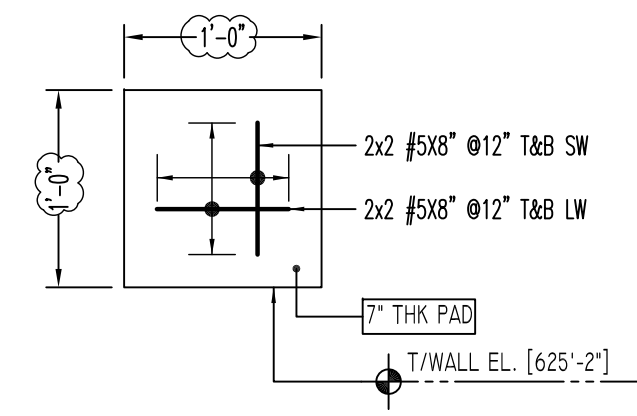
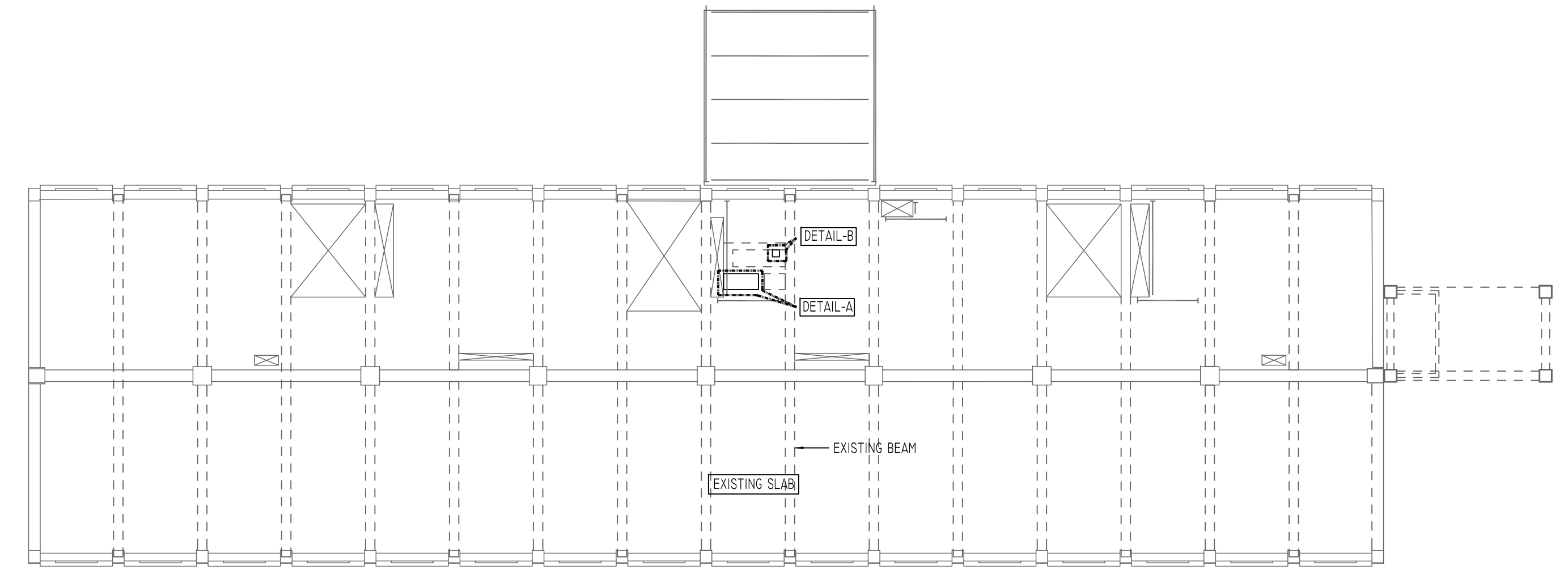


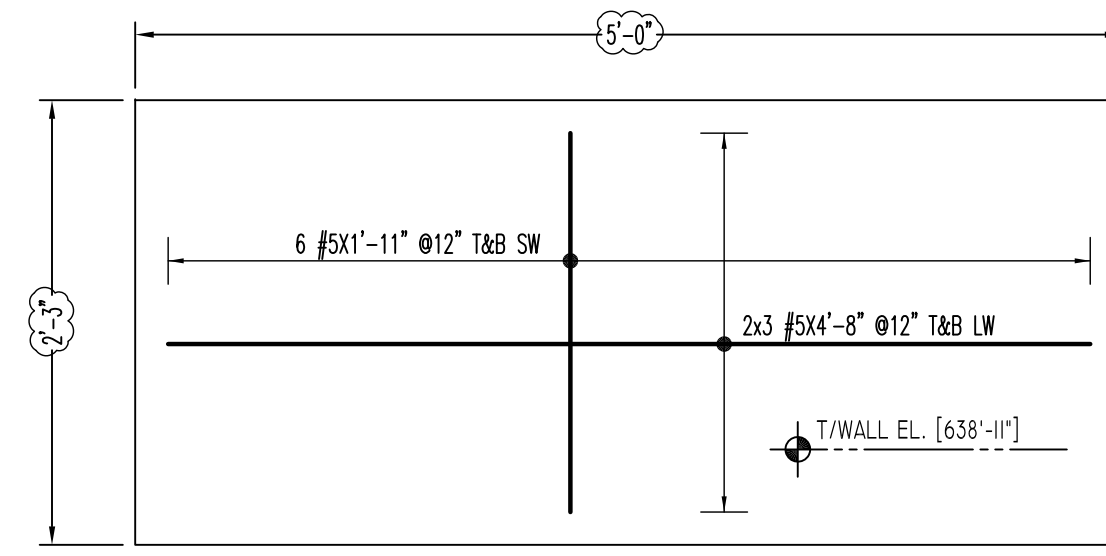
SECOND FLOOR WEST SOD REINF. DETAILS
DETAIL-A
SCALE - 1/1"=1'-0"
REF:S-212



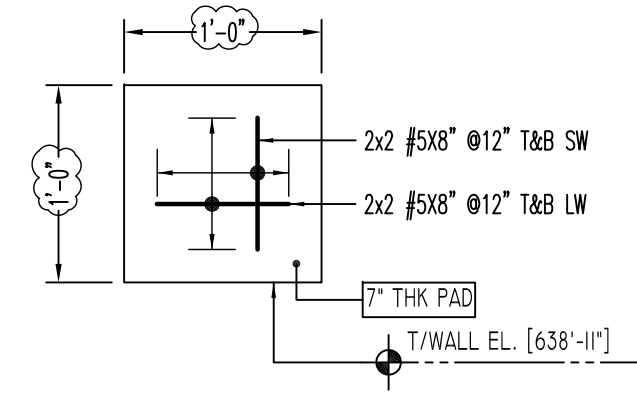
SECOND FLOOR WEST SOD REINF. DETAILS
DETAIL-B
SCALE - 1/1"=1'-0"
REF:S-212



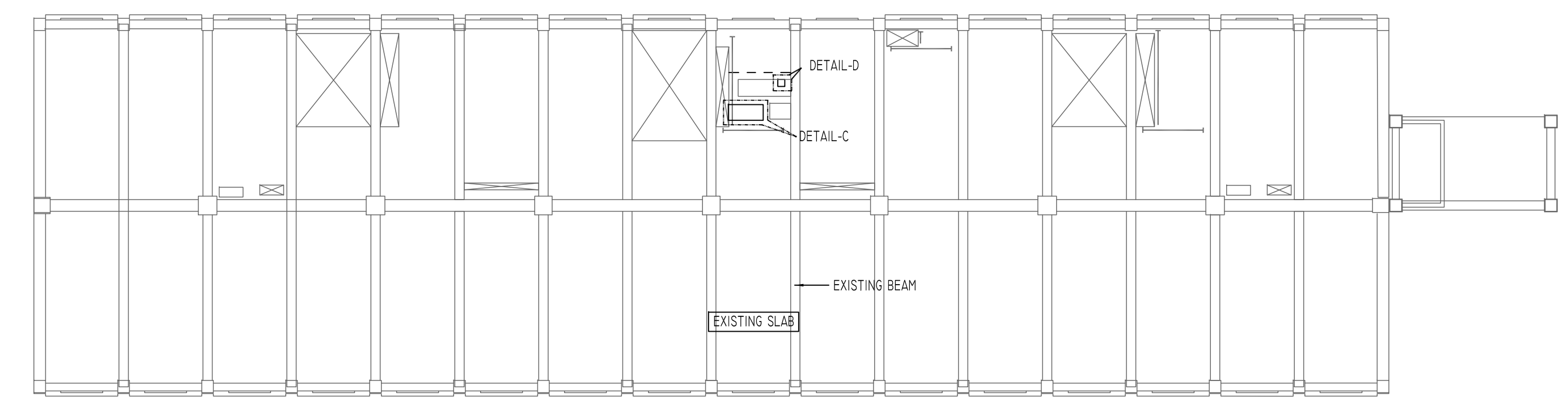
2ND FLOOR KEY PLAN
N.T.S
REF:S-212



THIRD FLOOR WEST SOD REINF. DETAILS
DETAIL-C
SCALE - 1/1"=1'-0"
REF:S-212



THIRD FLOOR WEST SOD REINF. DETAILS
DETAIL-D
SCALE - 1/1"=1'-0"
REF:S-212



3RD FLOOR KEY PLAN
N.T.S
REF:S-212

ACCESSORIES DETAILS			
DESCRIPTION	PCS	LFT	REMARK
3" HT CHCU @ 4'-0" C/C 7" THK SOG	-	15	FOR T&B SUPPORT

PLEASE VERIFY LAP SCHEDULE

SIZE	4000 PSI	
	TOP	OTHERS
#3	25'	19'
#4	33'	25'
#5	41'	31'
#6	48'	37'
#7	70'	54'
#8	80'	62'
#9	91'	70'
#10	102'	79'
#11	113'	87'

REVISION MARK	REVISION DETAILS	DATE
0	FOR APPROVAL	02/14/2020

Abbreviations:
 I.F.=Inside Face
 O.F.=Outside Face
 E.F.=Each Face
 DWL=Dowel
 V=Vertical
 H=Horizontal
 C.B.=Corner Bar
 S.DWL=Slab Dowel
 E.W.=Each Way
 B/BOT=Bottom
 T=Top
 MDWL= Masonry Dowel
 B.B.=Bond Beam
 ALT.=Alternate
 Approx.=Approximate

OPNG=Opening
 BAL: Balance
 BTW:Between
 CJ=Construction Joint
 CLR: CLEARANCE
 CMU= Concrete Masonry Unit
 CONT.=Continuous
 EA.=Each
 Elev.=Elevation
 EMB=Embedment
 SW = Short Way
 LW=Long Way
 (BL)=Black Bar
 (EP)=Epoxy Bar
 (GA)= Galvanized

NOTICE

Shortages, improper fabrication or claims for any other reason must be reported to this company within a period of 15 days of delivery. This company reserves the right to field inspect prior to replacement or reconditioning of nonconforming material, and will not honor charges for work done in the field without specific authorization from this company.

REINFORCING STEEL PLACING DRAWINGS ONLY USE IN CONJUNCTION WITH CONTRACT DRAWINGS & SPECIFICATIONS. ELEVATIONS & DIMENSIONS SHOWN ON THIS DRAWING ARE FOR DETAILING PURPOSES ONLY AND SHOULD NOT BE USED FOR CONSTRUCTION UNLESS VERIFIED BY ENGINEER OR CONTRACTOR.

PROJECT	UCONN-UNIVERSITY OF CONNECTICUT		
LOCATION	NEW YORK #901803		
ARCHITECT	MITCHELL GIURGOLA ARCHITECTS LLP		
ENGINEER	ROBERT SILMAN ASSOCIATES		
CUSTOMER	UNIVERSAL FOUNDATION		
DRAWN BY:	DATE:	REVIEWED BY:	JOB NO.
SAN/MRS	02/14/20	T/L	20010
DRAWING TITLE:	DRAWING NO.:		
GANT BUILDING PH-2 SECOND & THIRD FLOOR REINFORCEMENT DETAILS			R7