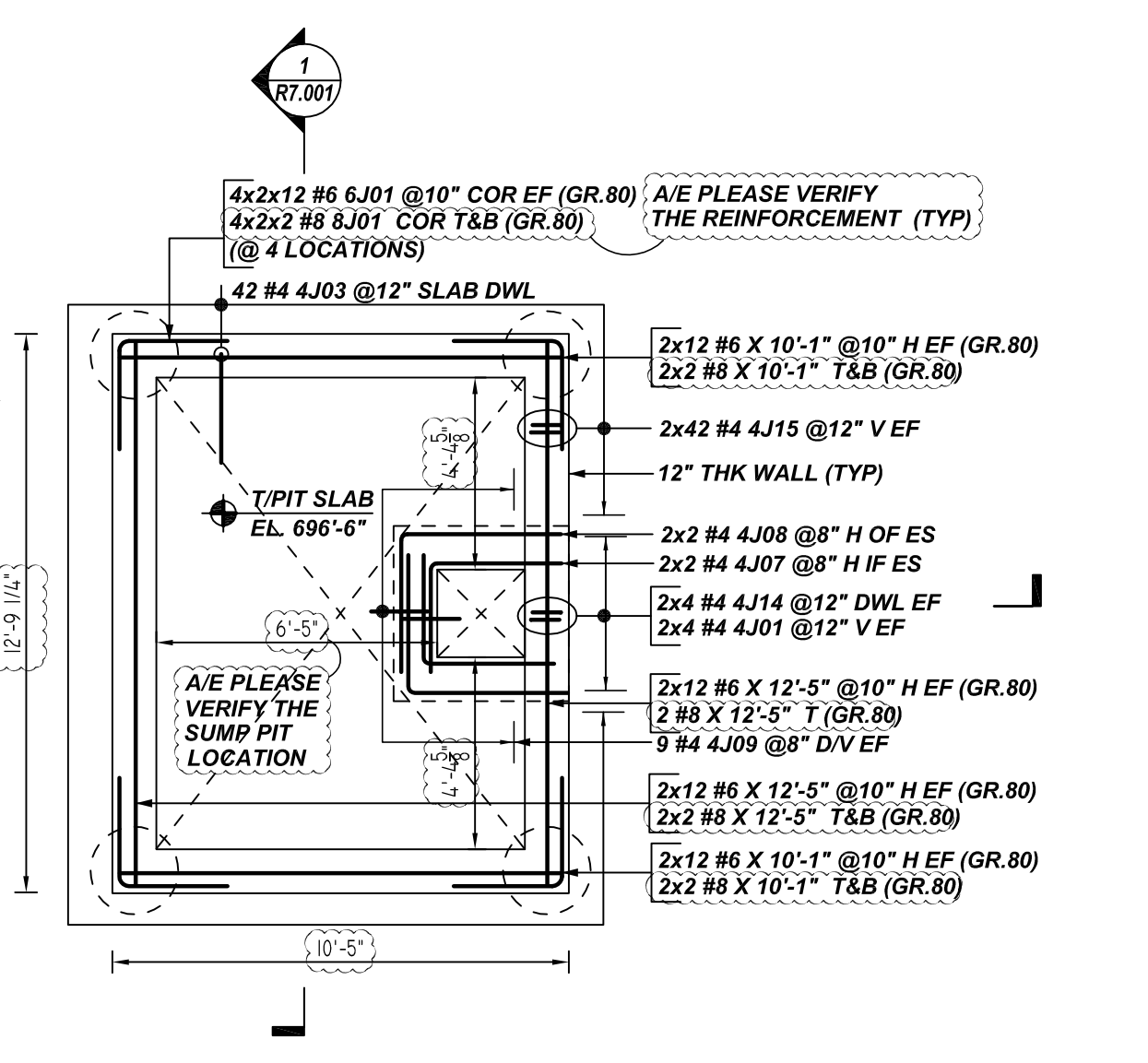
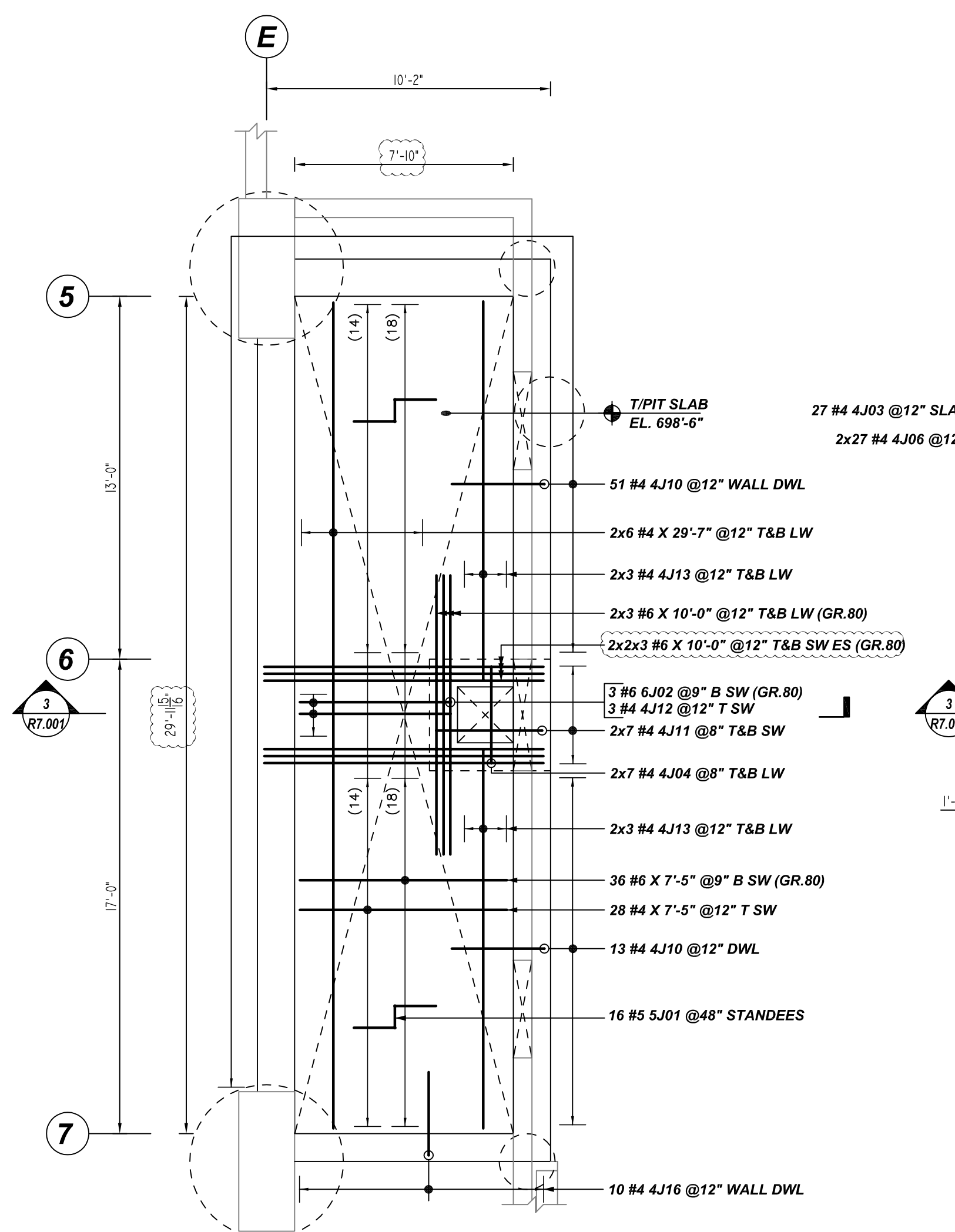


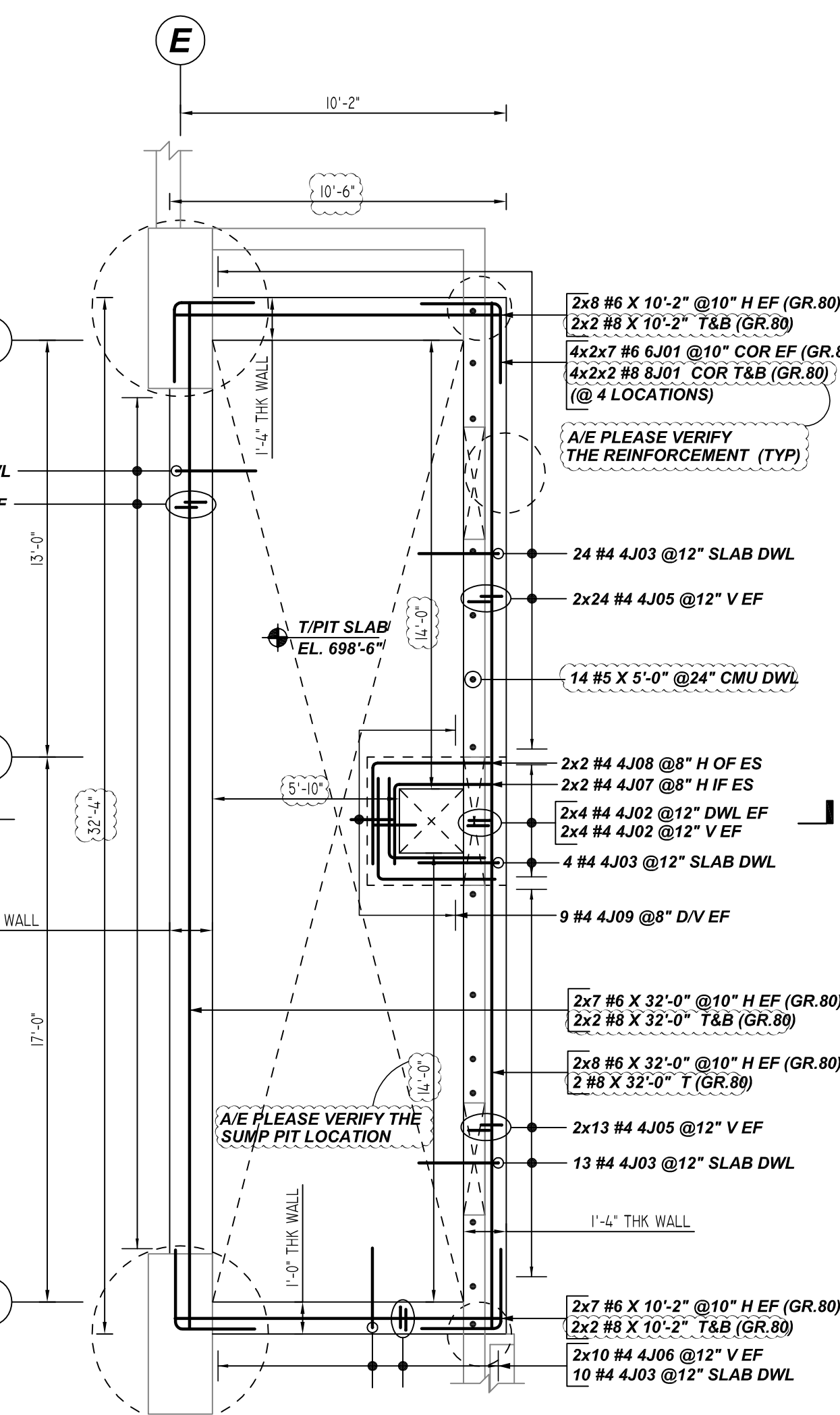
DETAIL-A (ELEVATOR PIT MAT)
REF: S2.011 (DT.11/19/21)
SCALE: 1/4" = 1'-0"



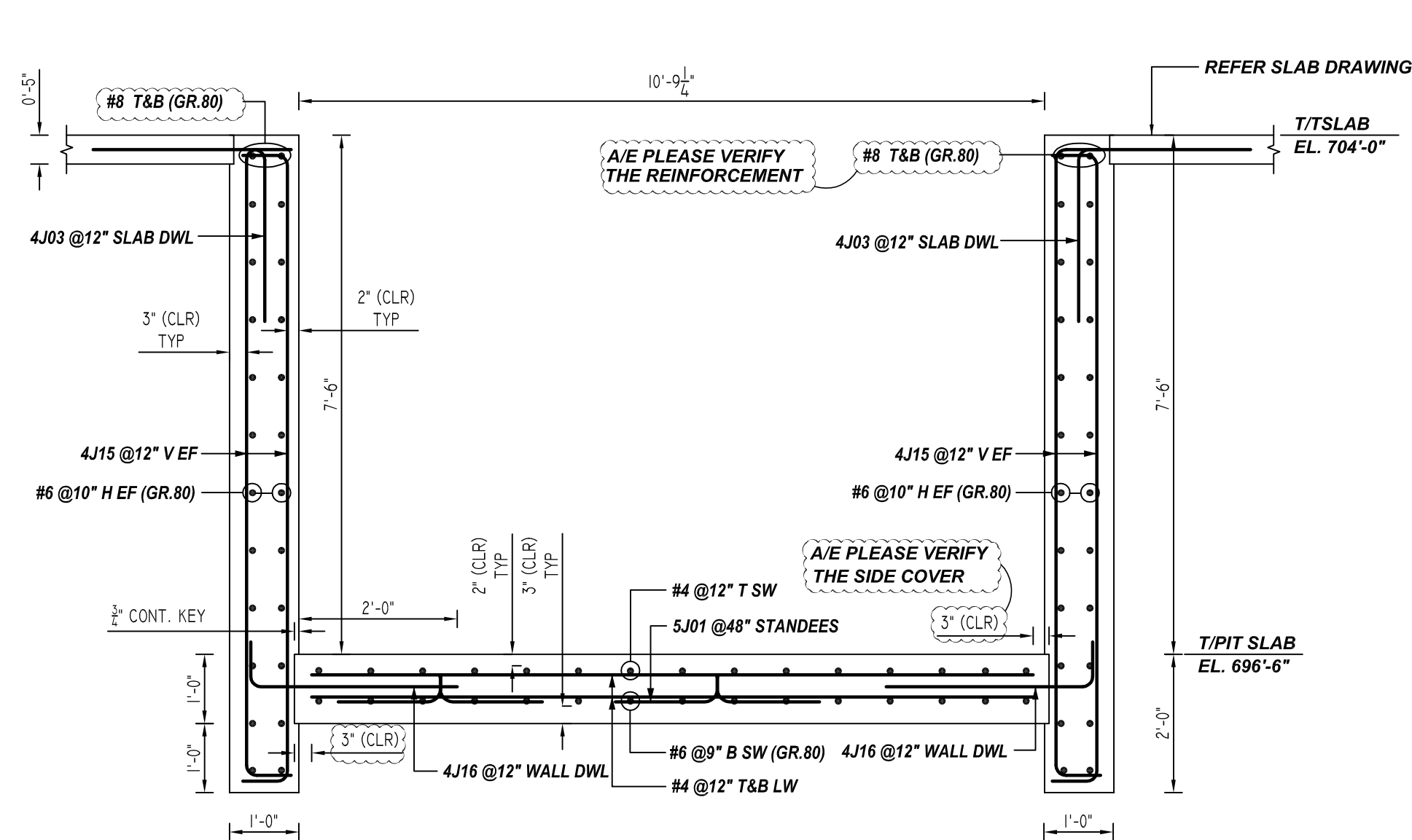
DETAIL-A (ELEVATOR PIT WALL)
REF: S2.011 (DT.11/19/21)
SCALE: 1/4" = 1'-0"



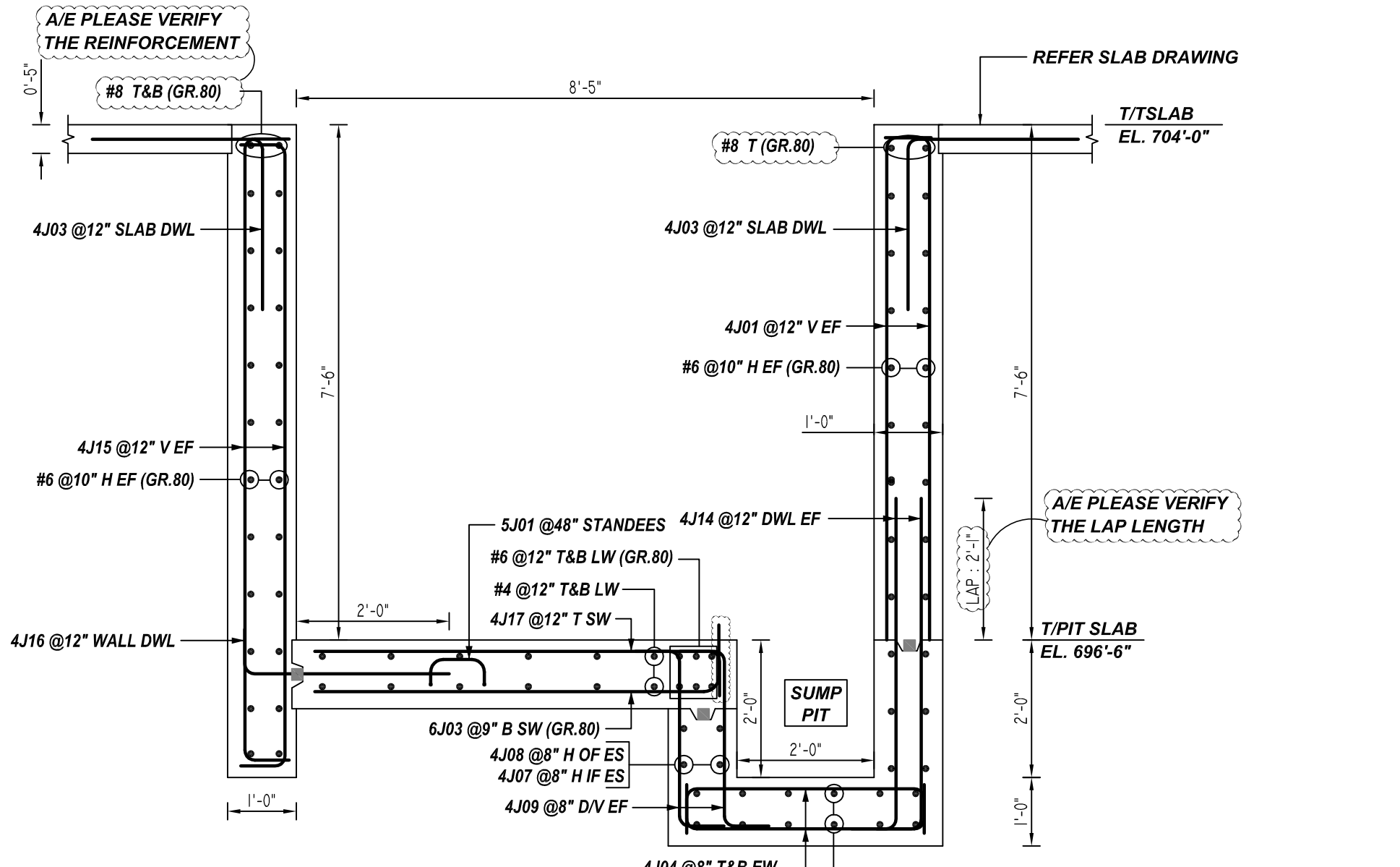
DETAIL-B (ELEVATOR PIT MAT)
REF: S2.011 (DT.11/19/21)
SCALE: 1/4" = 1'-0"



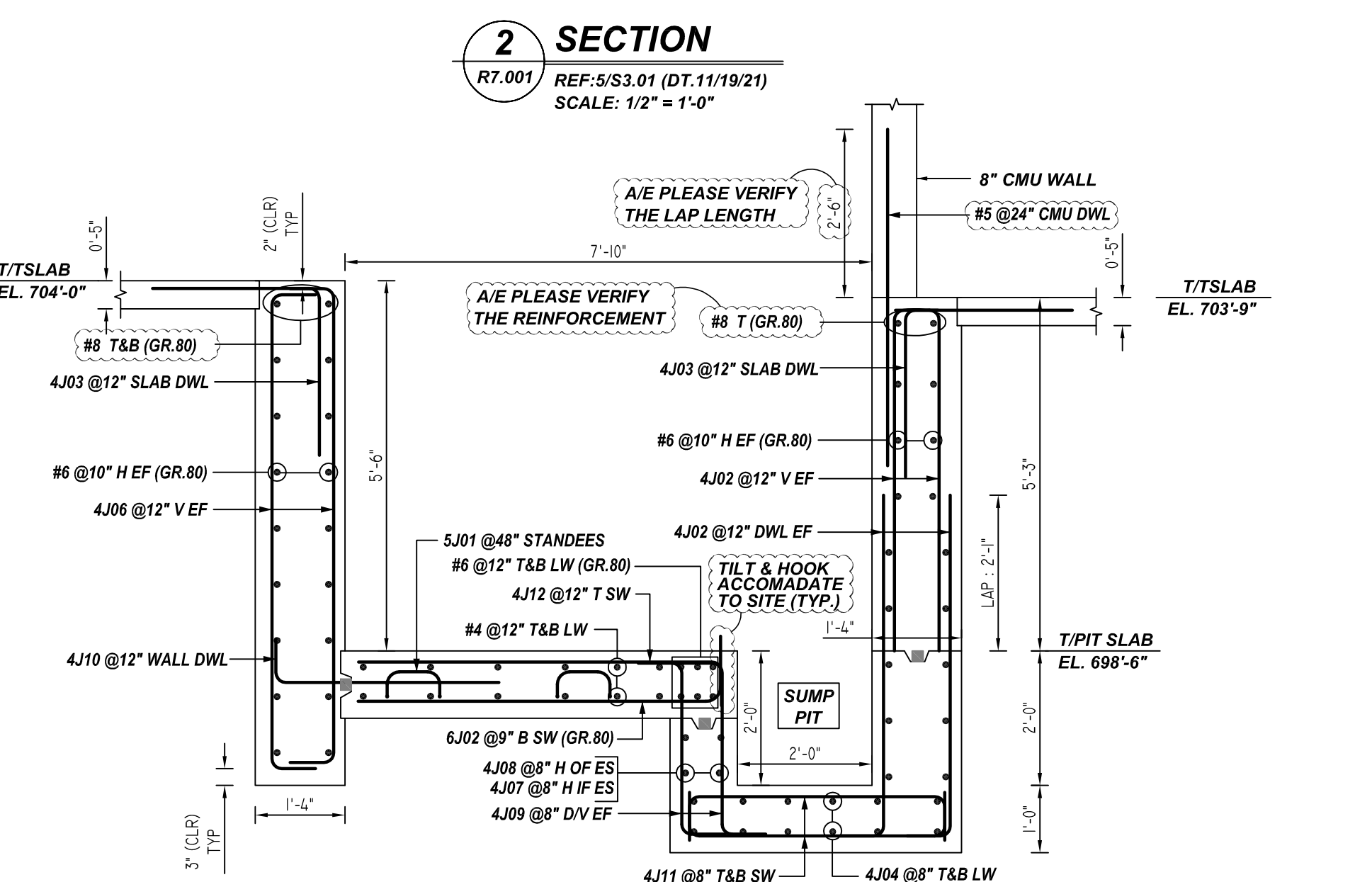
DETAIL-B (ELEVATOR PIT WALL)
REF: S2.011 (DT.11/19/21)
SCALE: 1/4" = 1'-0"



SECTION 1
R7.001 REF: S3.01 (DT.11/19/21)
SCALE: 1/2" = 1'-0"



SECTION 2
R7.001 REF: S3.01 (DT.11/19/21)
SCALE: 1/2" = 1'-0"



SECTION 3
R7.001 REF: S & 6/S3.01 (DT.11/19/21)
SCALE: 1/2" = 1'-0"

LAP SCHEDULE
4000 PSI (CLASS-B) CASE - 1
Per ACI-318 (12.2.2)

BAR#	LENGTHS	
	TOP	OTHERS
#4	2'-8"	2'-1"
#5	3'-4"	2'-7"
#6	4'-0"	3'-1"
#7	5'-10"	4'-6"
#8	6'-8"	5'-2"

TYPICAL REINFORCING BAR CLEARANCE TABLE

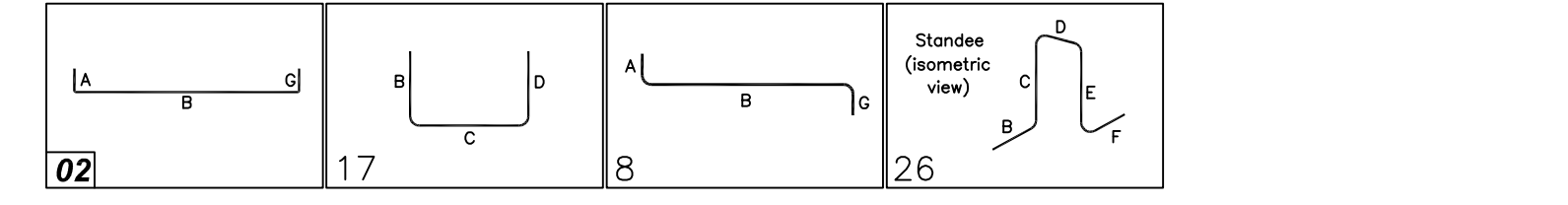
LOCATION	MIN. COVER
ELEVATOR PIT TOP	2" CLR
ELEVATOR PIT BOTTOM & SIDES	3" CLR
ELEVATOR PIT WALL TOP & INTERIOR	2" CLR
ELEVATOR PIT WALL BOTTOM & EXTERIOR	3" CLR

#6 AND GREATER BAR
ASTM A615 GRADE 80 BLACK UNCOATED

#5 AND SMALLER BAR
ASTM A615 GRADE 60 BLACK UNCOATED

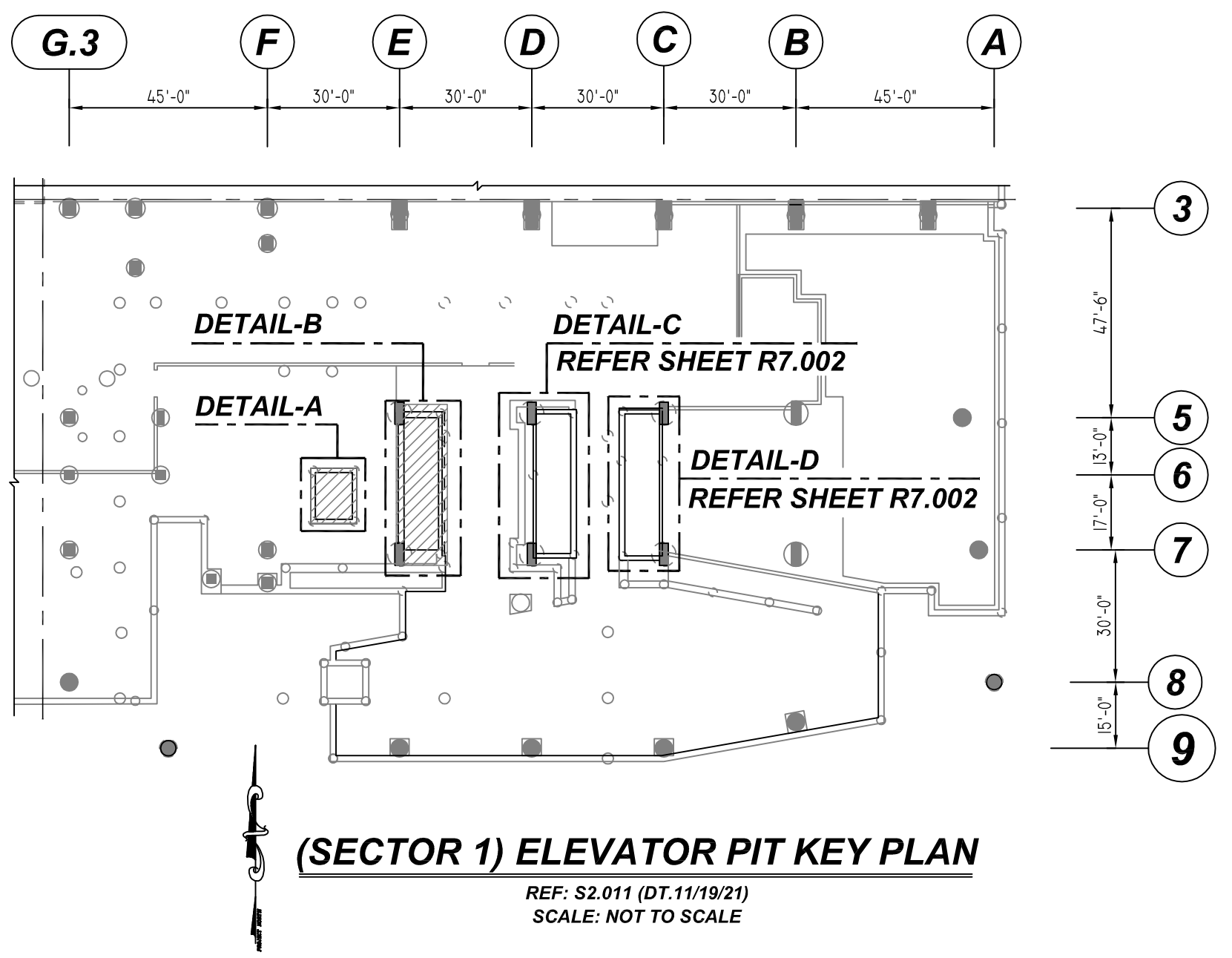
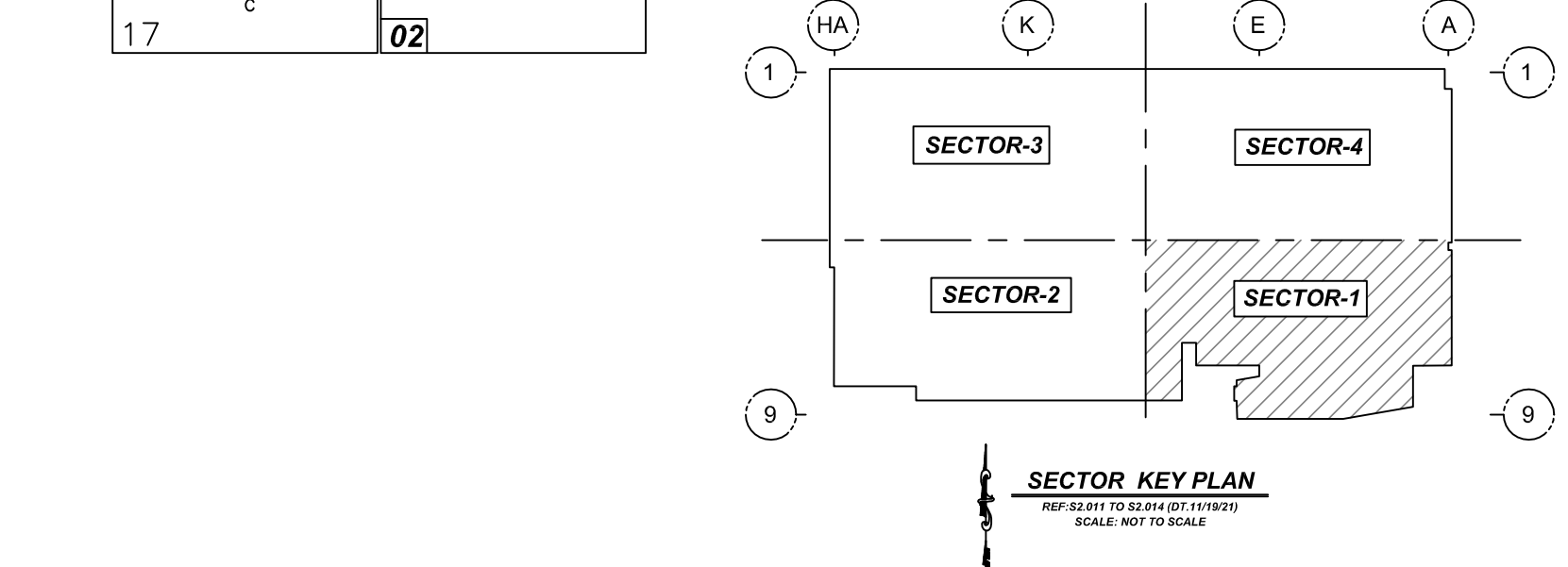
Release Number: R7.001 (GR.80)

Bar Mark	Qty	Size	Total Length	Type	X	Y	Z	W	V	U	T	S	R	Q	P	O	N	M	L	K	J	I	H	G	F	E	D	C	B	A
4001	8	#4	8'-0"	2	0'-8"	7'-4"																								
4002	16	#4	5'-9"	2	0'-8"	5'-1"																								
4003	128	#4	5'-9"	17	0'-8"	2'-6"																								
4004	42	#4	4'-10"	2	0'-8"	3'-6"																								
4005	74	#4	8'-2"	2	0'-8"	6'-10"																								
4006	74	#4	8'-2"	2	0'-8"	7'-1"																								
4007	8	#4	5'-6"	17	2'-6"	3'-0"																								
4008	8	#4	6'-10"	17	3'-2"	3'-8"																								
4009	16	#4	3'-11"	8	0'-8"	2'-7"																								
4010	64	#4	4'-0"	2	0'-8"	2'-4"																								
4011	14	#4	5'-2"	2	0'-8"	3'-10"																								
4012	3	#4	6'-1"	2	0'-8"	5'-5"																								
4013	12	#4	14'-3"	2	0'-8"	13'-7"																								
4014	8	#4	5'-6"	2	0'-8"	4'-10"																								
4015	84	#4	10'-5"	2	0'-8"	9'-1"																								
4016	48	#4	3'-8"	2	0'-8"	3'-0"																								
4017	3	#4	6'-7"	2	0'-8"	5'-11"																								
4018	12	#4	4'-7"	2	0'-8"	3'-11"																								
5001	22	#5	4'-8"	26	1'-6"	0'-5"	0'-10"	0'-5"	1'-6"																					



Release Number: R7.001 (GR.80)

Bar Mark	Qty	Size	Total Length	Type	X	Y	Z	W	V	U	T	S	R	Q	P	O	N	M	L	K	J	I	H	G	F	E	D	C	B	A
6001	152	#6	5'-0"	17	2'-6"	2'-6"																								
6002	3	#6	6'-5"	2	1'-0"	5'-5"																								
6003	3	#6	6'-11"	2	1'-0"	5'-11"																								
8001	30	#8	5'-0"	17	2'-6"	2'-6"																								



THE PLACING DRAWING IS D'AMBRA'S INTERPRETATION OF THE CONTRACT DRAWINGS. IT IS NOT INTENDED AS A STANDALONE DOCUMENT AND MUST ALWAYS BE USED IN CONJUNCTION WITH THE CONTRACT DRAWINGS.

SHEET TITLE: (SECTOR 1)ELEVATOR PIT REINFORCEMENT DETAILS			
PROJECT: HALL PARK D1			
LOCATION: FRISCO, TEXAS			
CUSTOMER: AUSTIN COMMERCIAL			
ENGINEER: BROCKETTE DAVIS DRAKE, INC.			
DETAILER: BCS		JOB # 21-030	SHEET # R7.001

ISS.	BY.	DATE	DESCRIPTION
0	BCS	12/13/21	FOR APPROVAL

