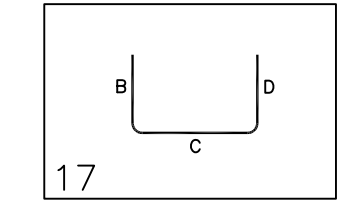


Release Number	RI	Qty	Size	Total Length	Type	X	Y	Z	V	W	U	V	W	X	Y
4A02	110	4	#4	5'-0"	T1	2'-0"	3'-0"								
4A03	3	#4	11'-8"	T1	0'-6"	10'-8"	0'-6"								
4A05	4	#4	7'-6"	T1	0'-6"	7'-0"									
4A09	110	4	#4	4'-6"	T1	1'-6"	3'-0"								
4A10	1	#4	14'-6"	T1	0'-6"	13'-6"	0'-6"								
5A01	2	#5	28'-3"	T1	0'-6"	25'-3"									
5A03	2	#5	5'-0"	T1	0'-6"	4'-6"									
5A04	2	#5	11'-9"	T1	0'-6"	11'-3"									
5A05	4	#5	11'-6"	T1	0'-6"	11'-0"									
5A06	2	#5	3'-11"	T1	0'-6"	3'-5"									
5A07	42	#5	5'-9"	T1	0'-6"	5'-3"									
5A08	3	#5	7'-6"	T1	0'-6"	7'-0"									
5A09	2	#5	22'-0"	T1	0'-6"	21'-6"									
5A10	4	#5	21'-4"	T1	0'-6"	21'-0"									
5A11	6	#5	10'-4"	T1	0'-6"	10'-0"									
5A12	3	#5	10'-0"	T1	0'-6"	9'-6"									
5A13	3	#5	10'-7"	T1	0'-6"	9'-7"	0'-6"								
5A14	4	#5	5'-1"	T1	0'-6"	4'-1"	0'-6"								
5A15	8	#5	7'-0"	T1	0'-6"	6'-0"	0'-6"								
5A17	2	#5	22'-6"	T1	0'-6"	22'-0"									
5A18	2	#5	24'-0"	T1	0'-6"	23'-6"									
5A19	4	#5	21'-4"	T1	0'-6"	21'-0"									
5A20	27	#5	4'-3"	T1	0'-6"	3'-9"									
5A21	3	#5	17'-9"	T1	0'-6"	17'-3"									
5A22	6	#5	16'-0"	T1	0'-6"	15'-6"									
5A23	3	#5	7'-9"	T1	0'-6"	7'-3"									
5A24	14	#5	19'-6"	T1	0'-6"	19'-0"									
5A25	3	#5	19'-0"	T1	0'-6"	18'-6"									
5A26	10	#5	10'-10"	T1	0'-6"	9'-10"	0'-6"								
5A27	3	#5	18'-0"	T1	0'-6"	17'-6"									
5A28	4	#5	12'-5"	T1	0'-6"	12'-0"									
5A29	2	#5	10'-9"	T1	0'-6"	10'-3"									
5A30	9	#5	8'-6"	T1	0'-6"	8'-0"									
5A31	9	#5	6'-6"	T1	0'-6"	6'-0"									
5A32	2	#5	31'-6"	T1	0'-6"	31'-0"									
5A33	2	#5	39'-0"	T1	0'-6"	38'-6"									
5A34	3	#5	15'-6"	T1	0'-6"	15'-0"									
5A35	10	#5	4'-9"	T1	0'-6"	4'-3"									
5A36	13	#5	13'-9"	T1	0'-6"	13'-3"									
5A37	2	#5	37'-2"	T1	0'-6"	36'-8"									
5A38	3	#5	14'-3"	T1	0'-6"	13'-9"									
5A39	2	#5	13'-3"	T1	0'-6"	12'-9"									
5A40	2	#5	20'-6"	T1	0'-6"	20'-0"									
6A01	8	#6	6'-0"	T1	3'-0"	3'-0"									



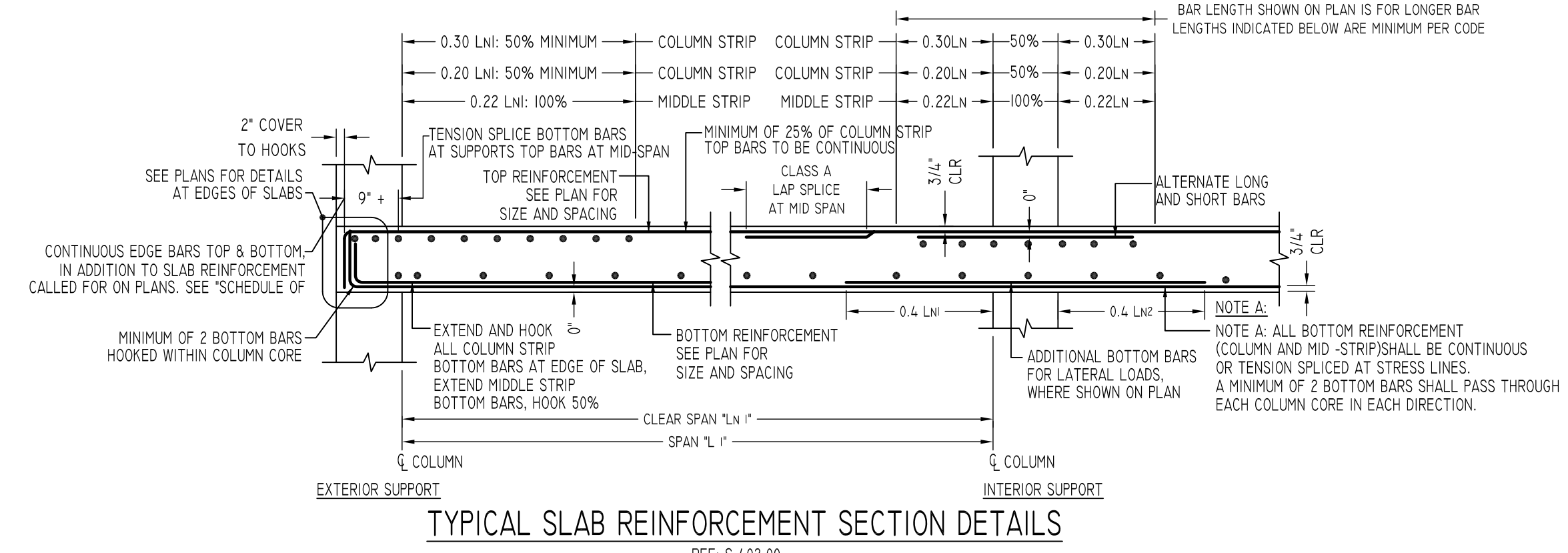
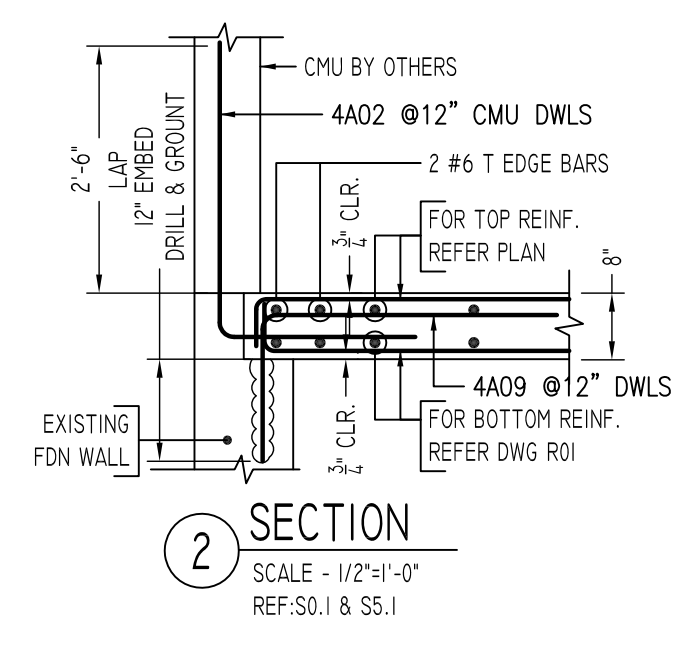
SIZE	5000 PSI	
	TOP	OTHERS
#3	1'-4"	1'-0"
#4	1'-8"	1'-4"
#5	2'-0"	1'-7"
#6	2'-9"	2'-4"
#7	4'-5"	3'-5"
#8	5'-6"	4'-3"
#9	6'-8"	5'-1"
#10	7'-10"	6'-0"

LOCATION	MIN. COVER
SLAB EDGE	2" CLR

**ALL BARS IN THIS DRAWING
ASTM A615 GRADE 60
BLACK UNCOATED**

SLAB THICKNESS	ADDITIONAL EDGE BARS (CONTINUOUS)
UP TO 7"	2-#5 TOP, 2-#5 BOTTOM
7" TO 8"	2-#7 TOP, 2-#6 BOTTOM
8" TO 10"	2-#8 TOP, 2-#7 BOTTOM
10" TO 12"	2-#8 TOP, 2-#6 BOTTOM
OVER 12"	SEE PLANS + DETAILS

* UNLESS HEAVIER BARS ARE SHOWN ON PLANS



REVISION MARK	REVISION DETAILS	DATE
0	FOR APPROVAL	01/22/2021

Abbreviations:
 I.F. = Inside Face
 O.F. = Outside Face
 E.F. = Each Face
 V = Vertical
 H = Horizontal
 C.B. = Corner Bar
 S.DWL = Slab Dowel
 E.W. = Each Way
 B/BOT = Bottom
 T = Top
 MDWL = Masonry Dowel
 B.B. = Bond Beam
 ALT. = Alternate
 Approx. = Approximate

OPNG = Opening
BAL = Balance
BTW = Between
CJ = Construction Joint
CLR = CLEARANCE
CMU = Concrete Masonry Unit
CONT = Continuous
EA = Each
Elev. = Elevation
EMB = Embedment
SW = Short Way
Long Way
(BL) = Black Bar
(EP) = Epoxy Bar
(GA) = Galvanized

NOTICE
 Shortages, improper fabrication or claims for any other reason must be reported to this company within a period of 15 days of delivery. This company reserves the right to field inspect prior to replacement or reconditioning of nonconforming material, and will not honor charges for work done in the field without specific authorization from this company.

REINFORCING STEEL PLACING DRAWINGS ONLY USE IN CONJUNCTION WITH CONTRACT DRAWINGS & SPECIFICATIONS. ELEVATIONS & DIMENSIONS SHOWN ON THIS DRAWING ARE FOR DETAILING PURPOSES ONLY AND SHOULD NOT BE USED FOR CONSTRUCTION UNLESS VERIFIED BY ENGINEER OR CONTRACTOR.

PROJECT	311 FRANKLIN AVENUE	JOB NO.	21009
LOCATION	BROOKLYN, NY	DRAWING NO.:	R1
ARCHITECT			
ENGINEER	WEXLER & ASSOCIATES		
CUSTOMER	BLUE STONE CONTRACTING		
DRAWN BY:	NSS/MRS	DATE:	01/22/21
REVIEWED BY:	T/L		
1ST FLOOR SLAB TOP REINFORCEMENT DETAILS			