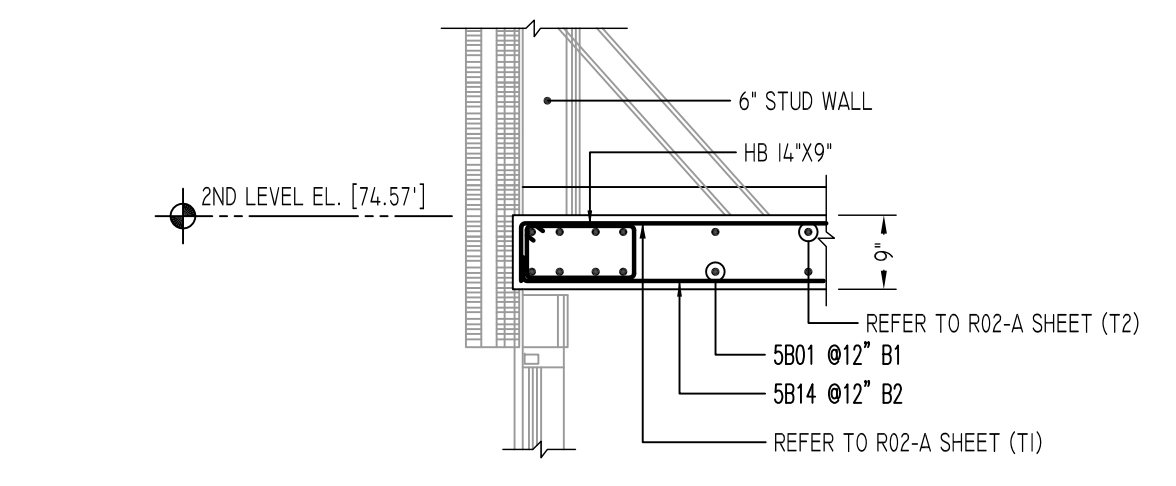
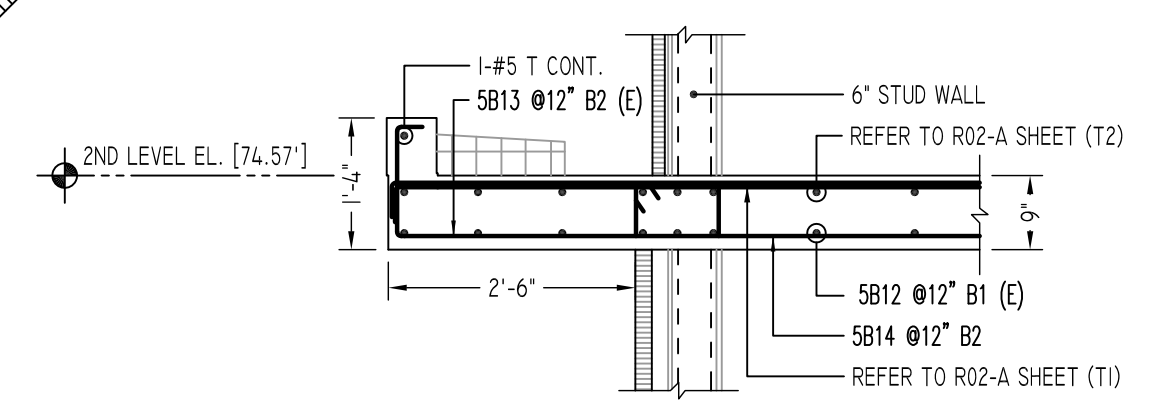


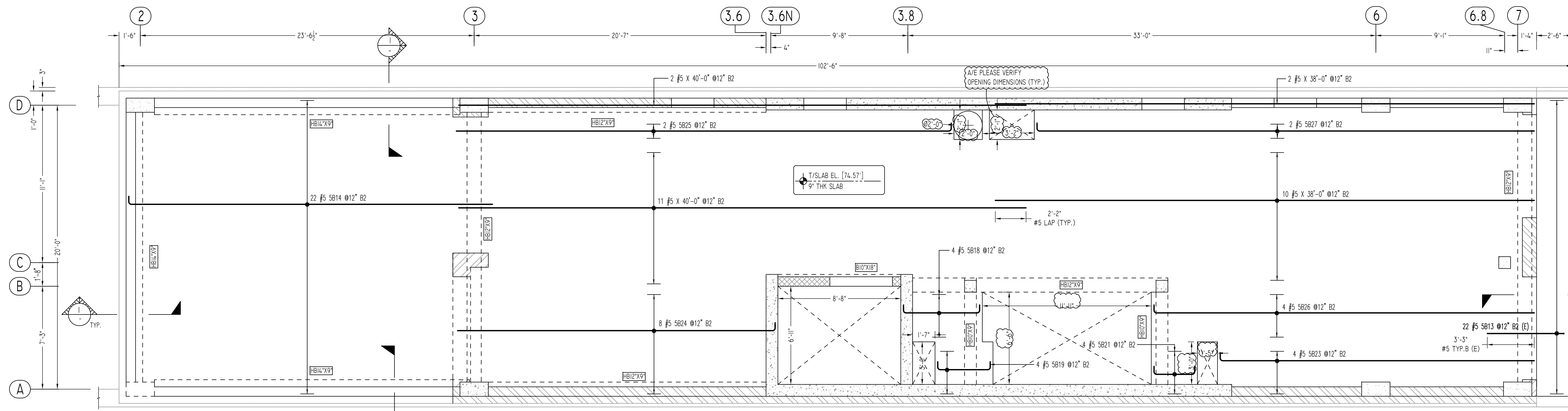
@ BOTTOM (B1 LAYER)
SECOND FLOOR SLAB REINFORCEMENT DETAILS
 SCALE - 1/4"=1'-0"
 REF: S-101.04



SECTION 1
 SCALE - 1/2"=1'-0"
 REF: 9A/S202-03



SECTION 2
 SCALE - 1/2"=1'-0"
 REF: 7/S202-03



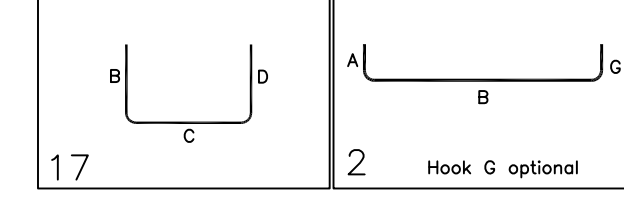
@ BOTTOM (B2 LAYER)
SECOND FLOOR SLAB REINFORCEMENT DETAILS
 SCALE - 1/4"=1'-0"
 REF: S-101.04

Release Number: RS-02

Bar Mark	Qty	Size	Total Length	Type	X	Y	Z	U	V	W	X	Y	Z	U	V	W	X	Y	
5801	76	#5	21'-10"	17															
5802	1	#5	4'-1"	17															
5803	1	#5	13'-3"	2															
5814	22	#5	28'-3"	17															
5818	4	#5	6'-7"	17															
5819	4	#5	4'-11"	17															
5821	4	#5	4'-1"	17															
5823	4	#5	22'-9"	17															
5824	8	#5	23'-0"	17															
5825	2	#5	35'-4"	17															
5826	4	#5	27'-5"	17															
5827	2	#5	35'-4"	17															
5828	2	#5	18'-0"	17															
5829	9	#5	14'-4"	17															
5830	2	#5	18'-11"	17															
5831	3	#5	11'-7"	17															
5833	9	#5	14'-1"	17															
6810	2	#6	21'-10"	17															

Release Number: RS-02(E)

Bar Mark	Qty	Size	Total Length	Type	X	Y	Z	U	V	W	X	Y	Z	U	V	W	X	Y	
5812	9	#5	21'-10"	17															
5813	22	#5	7'-0"	17															



FOR SLAB & BEAM

LAP SCHEDULE

SIZE	6000 PSI	
	OTHERS	TOP
#3	16"	23"
#4	21"	31"
#5	26"	38"
#6	31"	46"
#7	45"	67"
#8	51"	76"
#9	57"	86"
#10	64"	96"
#11	71"	107"

FOR EPOXY

LAP SCHEDULE

SIZE	6000 PSI	
	OTHERS	TOP
#3	24"	35"
#4	32"	47"
#5	39"	57"
#6	47"	69"
#7	68"	101"
#8	77"	114"
#9	86"	129"
#10	96"	144"
#11	107"	161"

ALL BARS IN THIS DRAWING
 ASTM A615 GRADE 60 BLACK UNCOATED
 EXCEPT (E) MENTIONED ARE EPOXY COATED
 ASTM A615 GRADE 60E

TYPICAL REINFORCING BAR CLEARANCE TABLE

LOCATION	MIN. COVER
SLAB	3/4" CLR
TOP & BOTTOM	2" CLR
BEAM (TIES, REINF.)	1 1/2" CLR

Abbreviations:
 I.F.=Inside Face
 O.F.=Outside Face
 E.F.=Each Face
 DWL=Dowel
 V=Vertical
 H=Horizontal
 C.B.=Corner Bar
 S.DWL=Slab Dowel
 E.W.=Each Way
 B/BOT=Bottom
 T=Top
 MDWL=Masonry Dowel
 B.B.=Bond Beam
 ALT.=Alternate
 Approx.=Approximate

OPNG=Opening
 BAL=Balance
 BTW=Between
 CJ=Construction Joint
 CLR=CLEARANCE
 CMU=Concrete Masonry Unit
 CONT=Continuous
 EA=Each
 Elev=Elevation
 EMB=Embedment
 SW=Short Way
 MDWL=Masonry Dowel
 LW=Long Way
 (BL)=Black Bar
 (EP)=Epoxy Bar
 (GA)=Galvanized

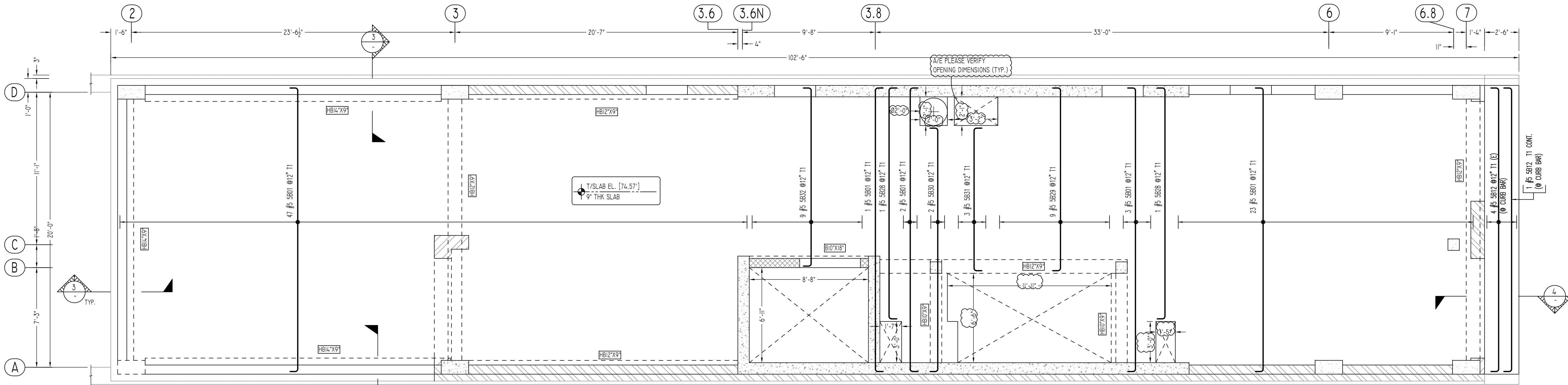
NOTICE

Shortages, improper fabrication or claims for any other reason must be reported to this company within a period of 15 days of delivery. This company reserves the right to field inspect prior to replacement or reconditioning of nonconforming material, and will not honor charges for work done in the field without specific authorization from this company.

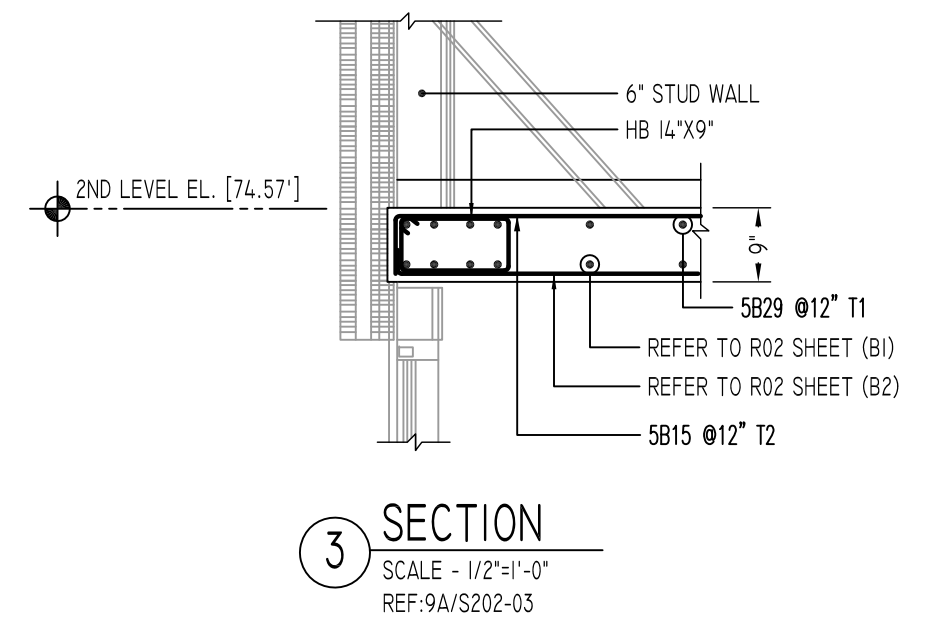
REINFORCING STEEL PLACING DRAWINGS ONLY USE IN CONJUNCTION WITH CONTRACT DRAWINGS & SPECIFICATIONS. ELEVATIONS & DIMENSIONS SHOWN ON THIS DRAWING ARE FOR DETAILING PURPOSES ONLY AND SHOULD NOT BE USED FOR CONSTRUCTION UNLESS VERIFIED BY ENGINEER OR CONTRACTOR.

REVISION MARK	REVISION DETAILS	DATE
0	FOR APPROVAL	01/22/2021

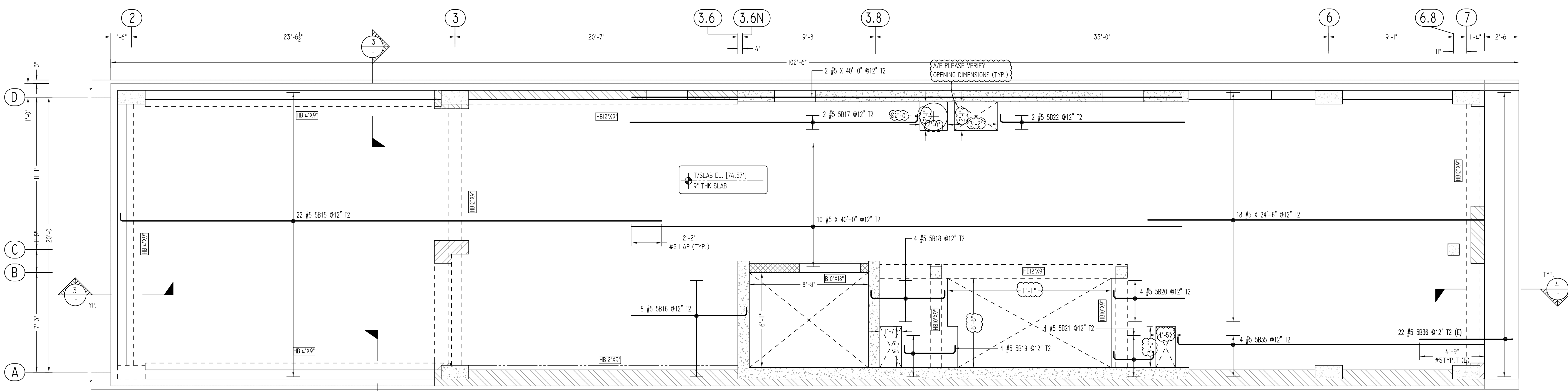
PROJECT	142.20 SANFORD AVE
LOCATION	FLUSHING, NY 11355
ARCHITECT	MICHAEL KANG ARCHITECT, PLLC
ENGINEER	LWM ENGINEERING GROUP, LLC
CUSTOMER	BLUESTONE CONTRACTING
DRAWN BY:	SKM/MRS
DATE:	01/22/21
REVIEWED BY:	T/L
JOB NO.	21010
DRAWING TITLE:	SECOND FLOOR SLAB REINFORCEMENT DETAILS
DRAWING NO.:	RS-02



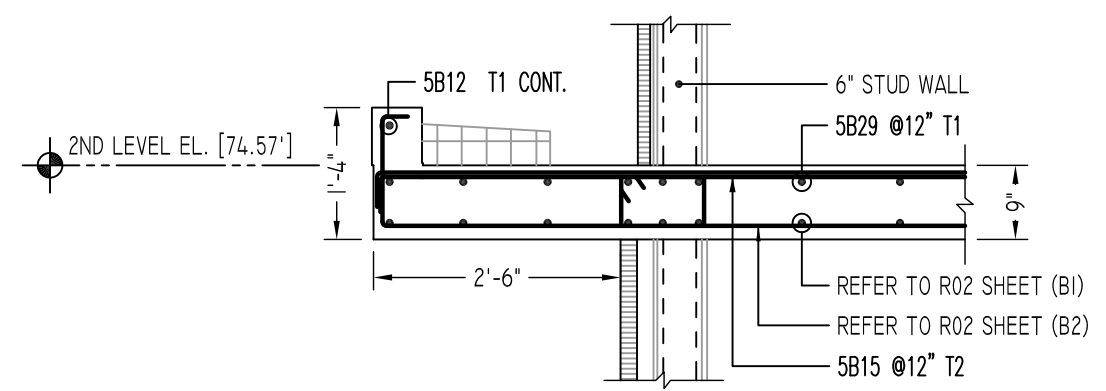
@ TOP (T1 LAYER)
SECOND FLOOR SLAB REINFORCEMENT DETAILS
 SCALE - 1/4"=1'-0"
 REF: S-101.04



SECTION 3
 SCALE - 1/2"=1'-0"
 REF: 9A/S202-03



@ TOP (T2 LAYER)
SECOND FLOOR SLAB REINFORCEMENT DETAILS
 SCALE - 1/4"=1'-0"
 REF: S-101.04



SECTION 4
 SCALE - 1/2"=1'-0"
 REF: 7/S202-03

Reinforcing Bar Schedule Table 1

Bar Mark	Qty	Size	Total Length	Type	X	Y	Z	W	V	U	T	S	R	Q	P	O	N	M	L	K	J	I	H	G	F	E	D	C	B	A
5801	76	#5	21'-10"	T1																										
5815	22	#5	40'-0"	T1																										
5816	8	#5	9'-0"	T1																										
5817	2	#5	21'-8"	T1																										
5818	4	#5	6'-7"	T1																										
5819	4	#5	4'-11"	T1																										
5820	4	#5	5'-0"	T1																										
5821	4	#5	4'-1"	T1																										
5822	2	#5	14'-0"	T1																										
5828	2	#5	18'-0"	T1																										
5829	9	#5	14'-8"	T1																										
5830	2	#5	18'-11"	T1																										
5831	3	#5	11'-7"	T1																										
5832	3	#5	14'-7"	T1																										
5835	4	#5	22'-11"	T1																										

Reinforcing Bar Schedule Table 2

Bar Mark	Qty	Size	Total Length	Type	X	Y	Z	W	V	U	T	S	R	Q	P	O	N	M	L	K	J	I	H	G	F	E	D	C	B	A
5836	22	#5	7'-4"	T1																										

FOR EPOXY LAP SCHEDULE

SIZE	OTHERS	TOP
#3	24"	35"
#4	32"	47"
#5	39"	57"
#6	47"	69"
#7	68"	101"
#8	77"	114"
#9	86"	129"
#10	96"	144"
#11	107"	161"

FOR SLAB & BEAM LAP SCHEDULE

SIZE	OTHERS	TOP
#3	16"	23"
#4	21"	31"
#5	26"	38"
#6	31"	46"
#7	45"	67"
#8	51"	76"
#9	57"	86"
#10	64"	96"
#11	71"	107"

TYPICAL REINFORCING BAR CLEARANCE TABLE

LOCATION	MIN. COVER
SLAB	3/4" CLR
TOP & BOTTOM	2" CLR
END	2" CLR
BEAM (TIES, REINF.)	1 1/2" CLR

**ALL BARS IN THIS DRAWING
 ASTM A615 GRADE 60 BLACK UNCOATED
 EXCEPT (E) MENTIONED ARE EPOXY COATED
 ASTM A615 GRADE 60E**

Abbreviations:
 I.F.=Inside Face
 O.F.=Outside Face
 E.F.=Each Face
 C.J.=Construction Joint
 CLR.=CLEARANCE
 CMU.=Concrete Masonry Unit
 CONT.=Continuous
 EA.=Each
 Elev.=Elevation
 EMB.=Embedment
 SW.=Short Way
 MDWL.=Masonry Dowel
 B.B.=Bond Beam
 ALT.=Alternate
 Approx.=Approximate

OPNG=Opening
 BAL.=Balance
 BTW.=Between
 C.=Construction Joint
 CLR.=CLEARANCE
 CMU.=Concrete Masonry Unit
 CONT.=Continuous
 EA.=Each
 Elev.=Elevation
 EMB.=Embedment
 SW.=Short Way
 MDWL.=Masonry Dowel
 B.B.=Bond Beam
 ALT.=Alternate
 Approx.=Approximate

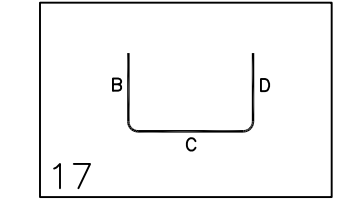
NOTICE

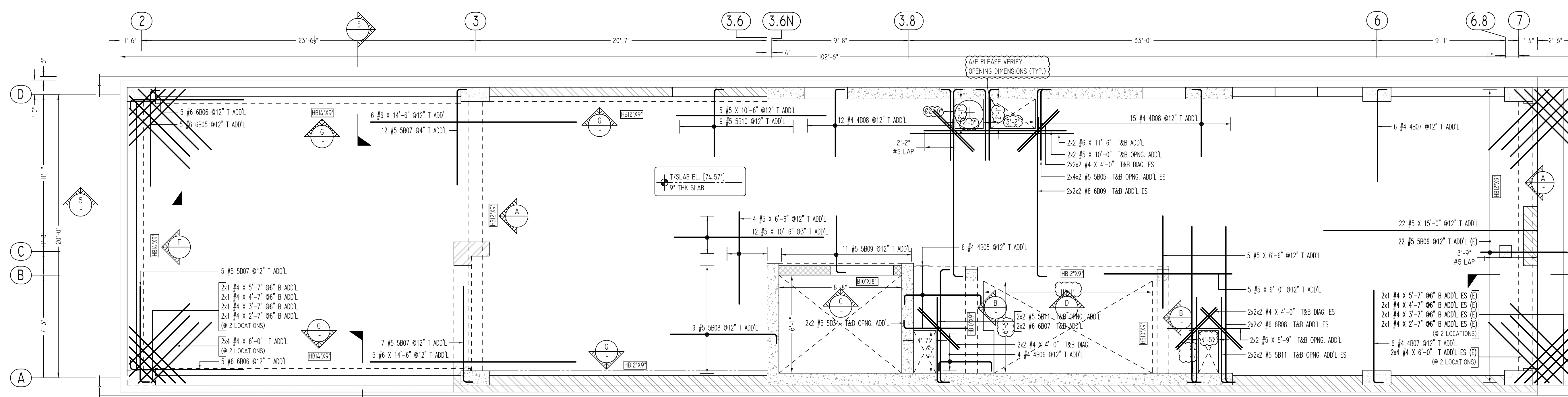
Shortages, improper fabrication or claims for any other reason must be reported to this company within a period of 15 days of delivery. This company reserves the right to field inspect prior to replacement or reconditioning of nonconforming material, and will not honor charges for work done in the field without specific authorization from this company.

REINFORCING STEEL PLACING DRAWINGS ONLY USE IN CONJUNCTION WITH CONTRACT DRAWINGS & SPECIFICATIONS. ELEVATIONS & DIMENSIONS SHOWN ON THIS DRAWING ARE FOR DETAILING PURPOSES ONLY AND SHOULD NOT BE USED FOR CONSTRUCTION UNLESS VERIFIED BY ENGINEER OR CONTRACTOR.

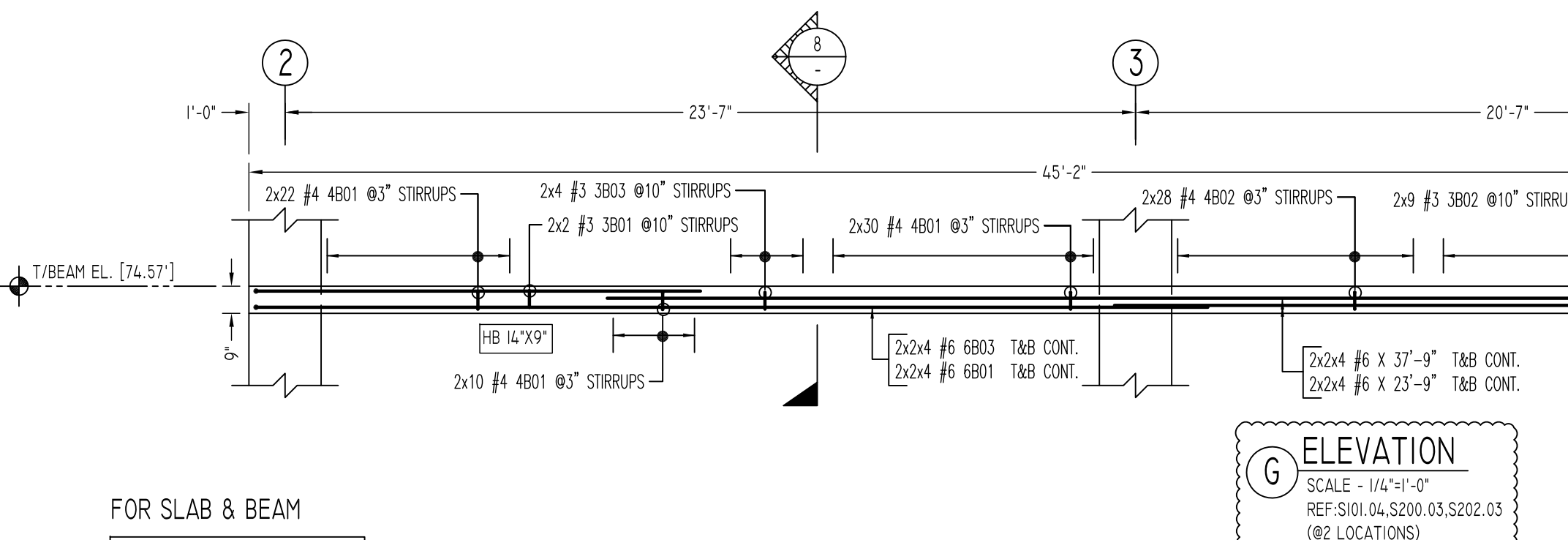
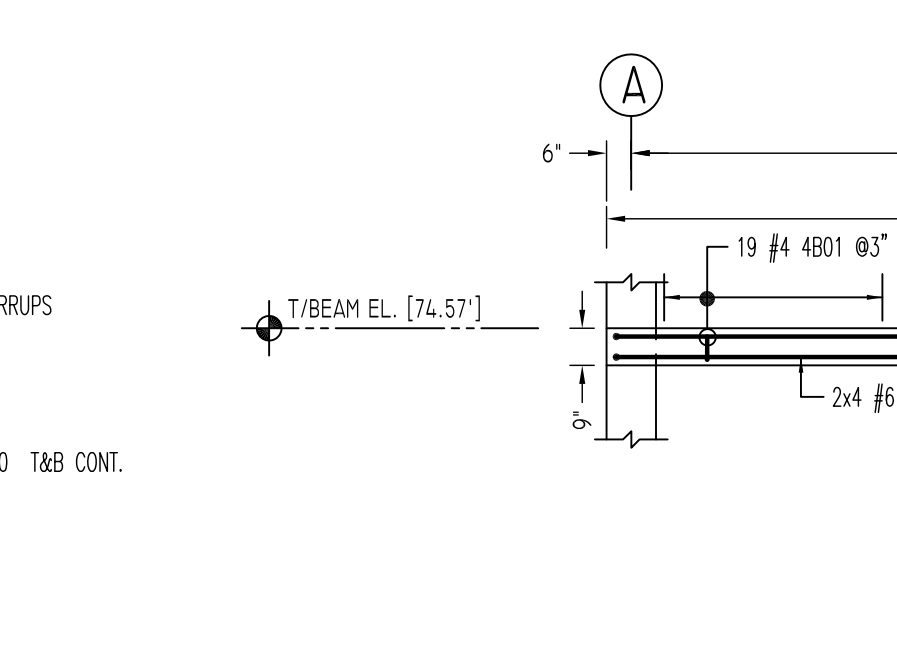
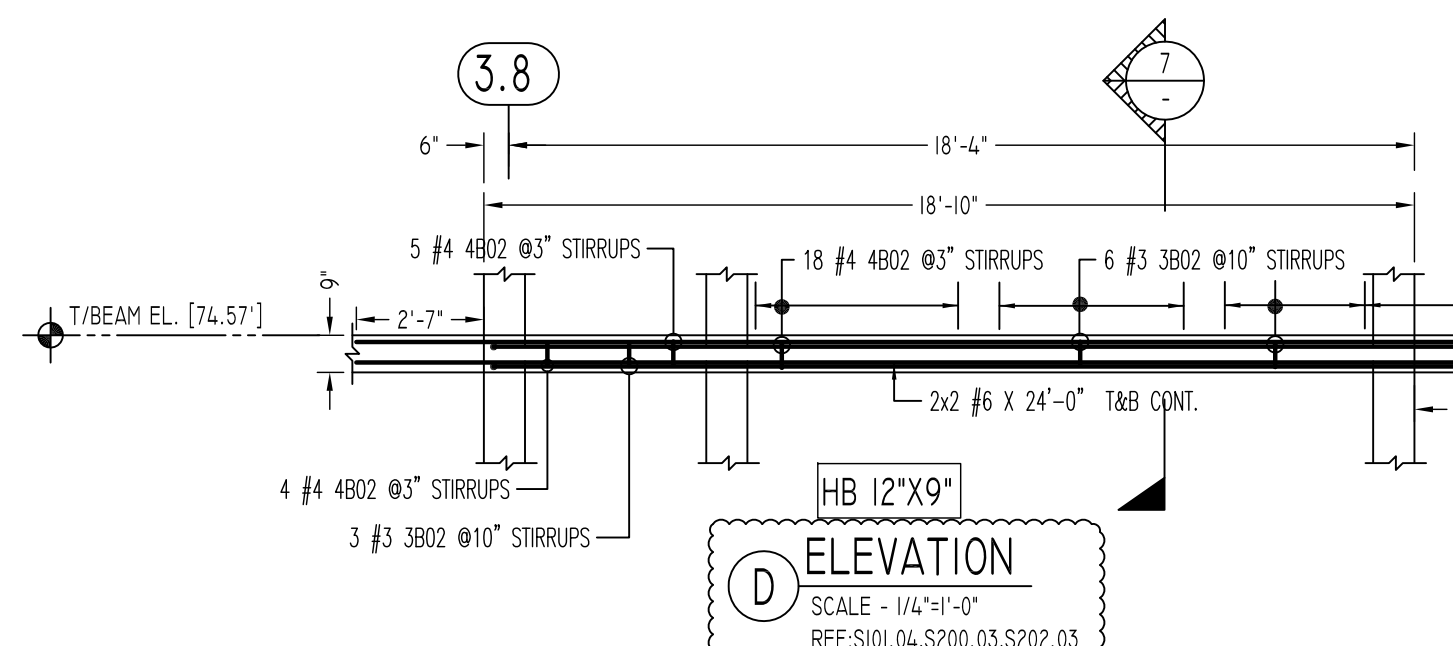
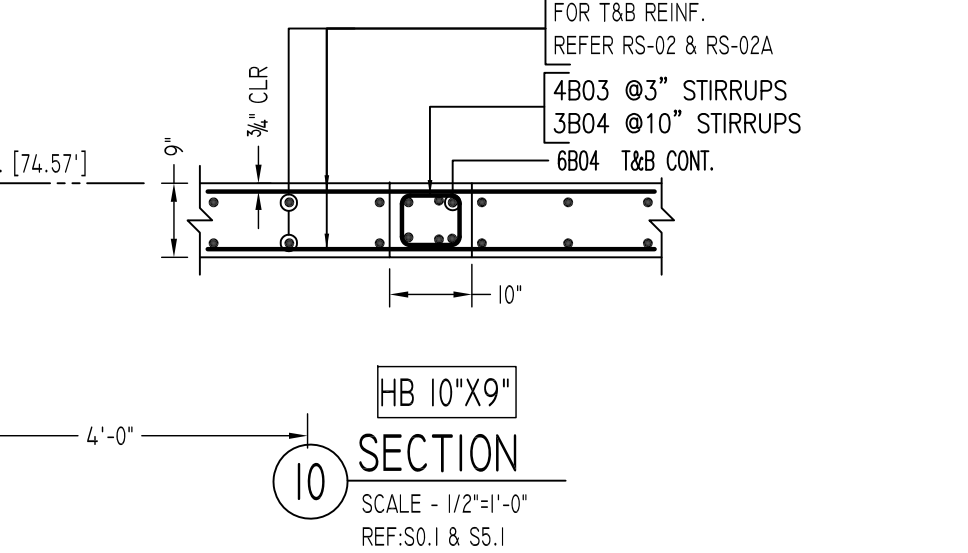
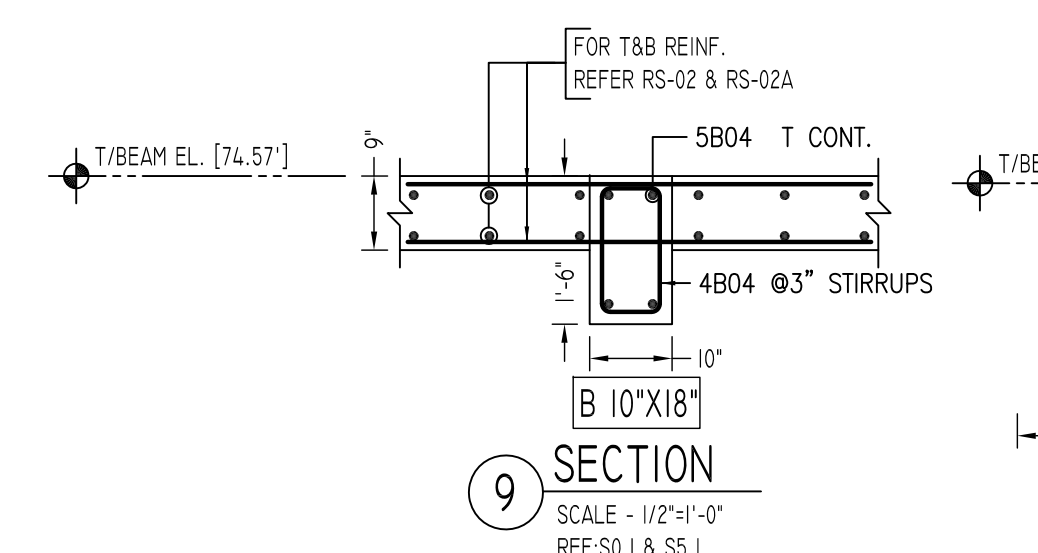
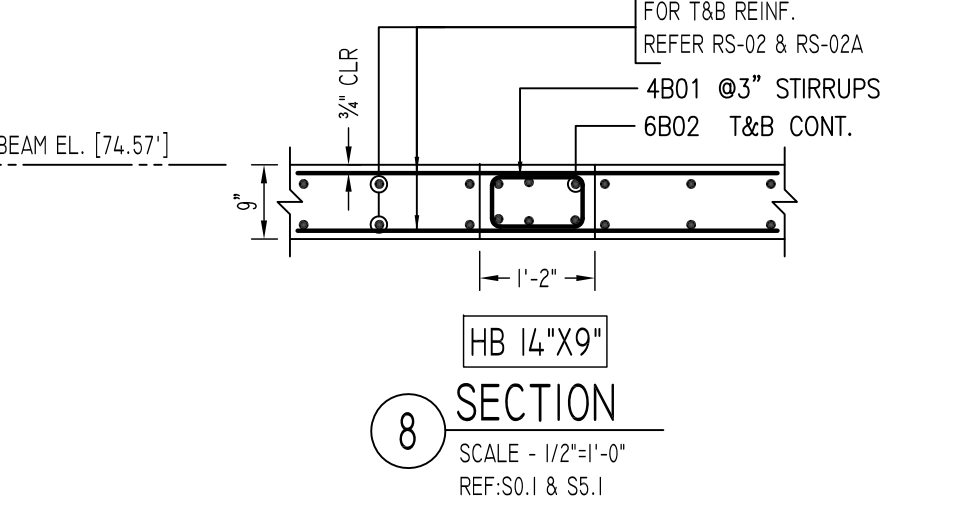
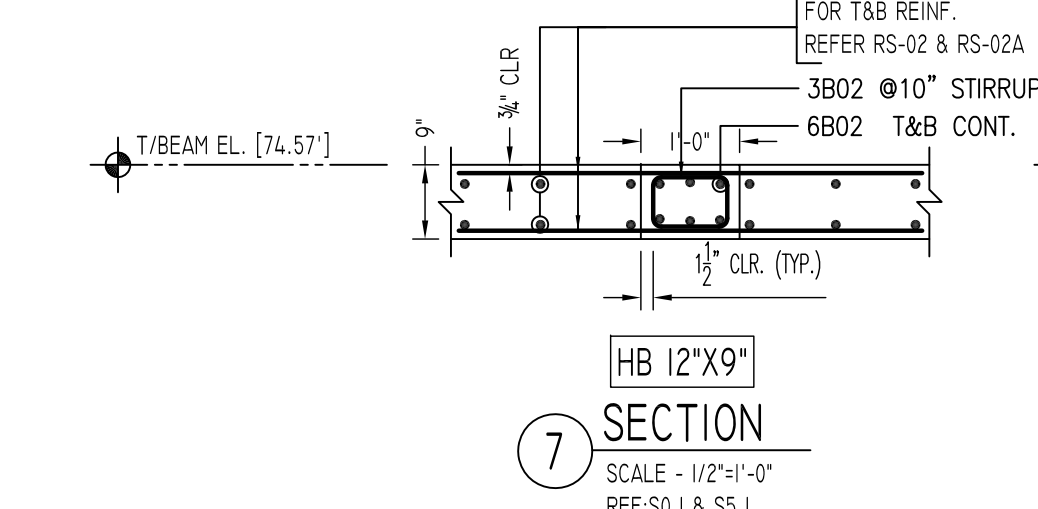
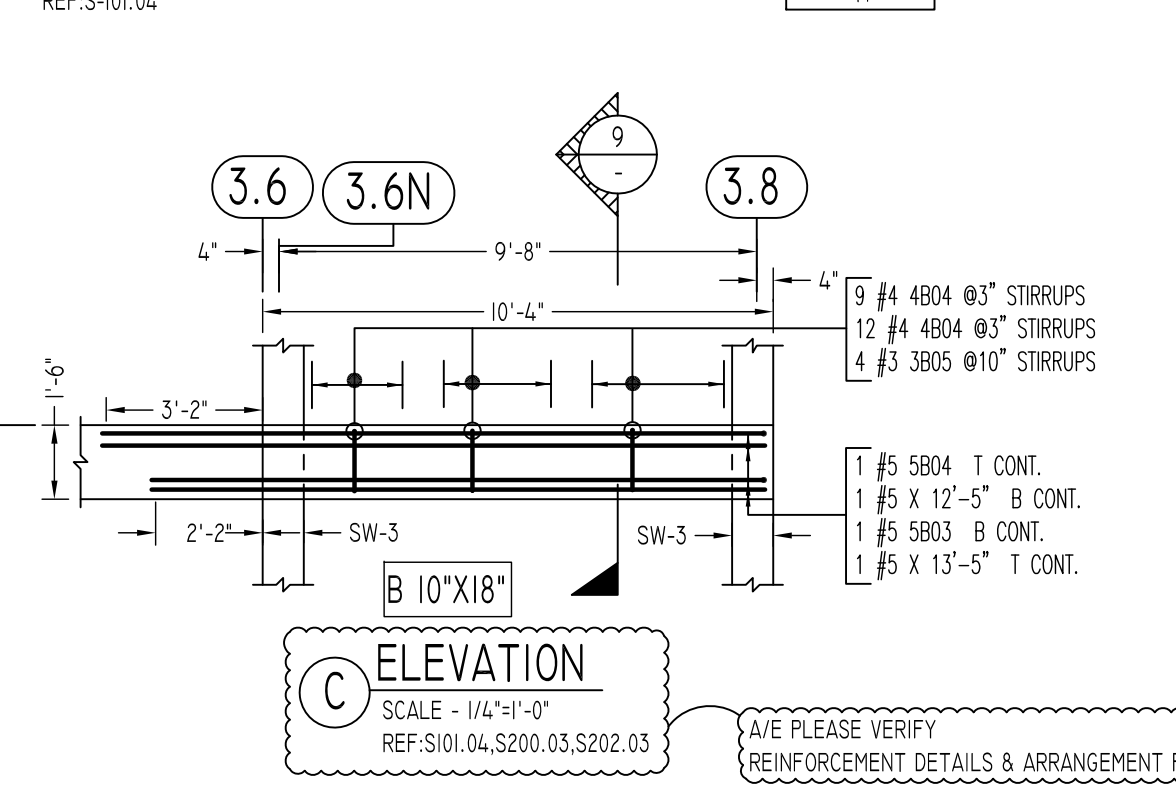
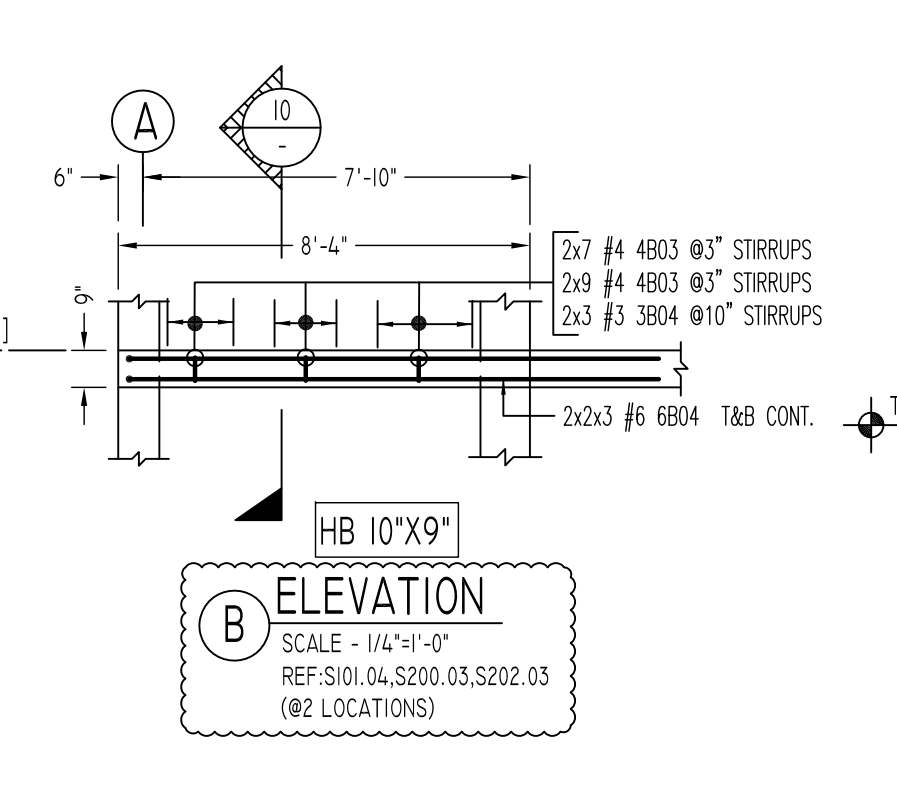
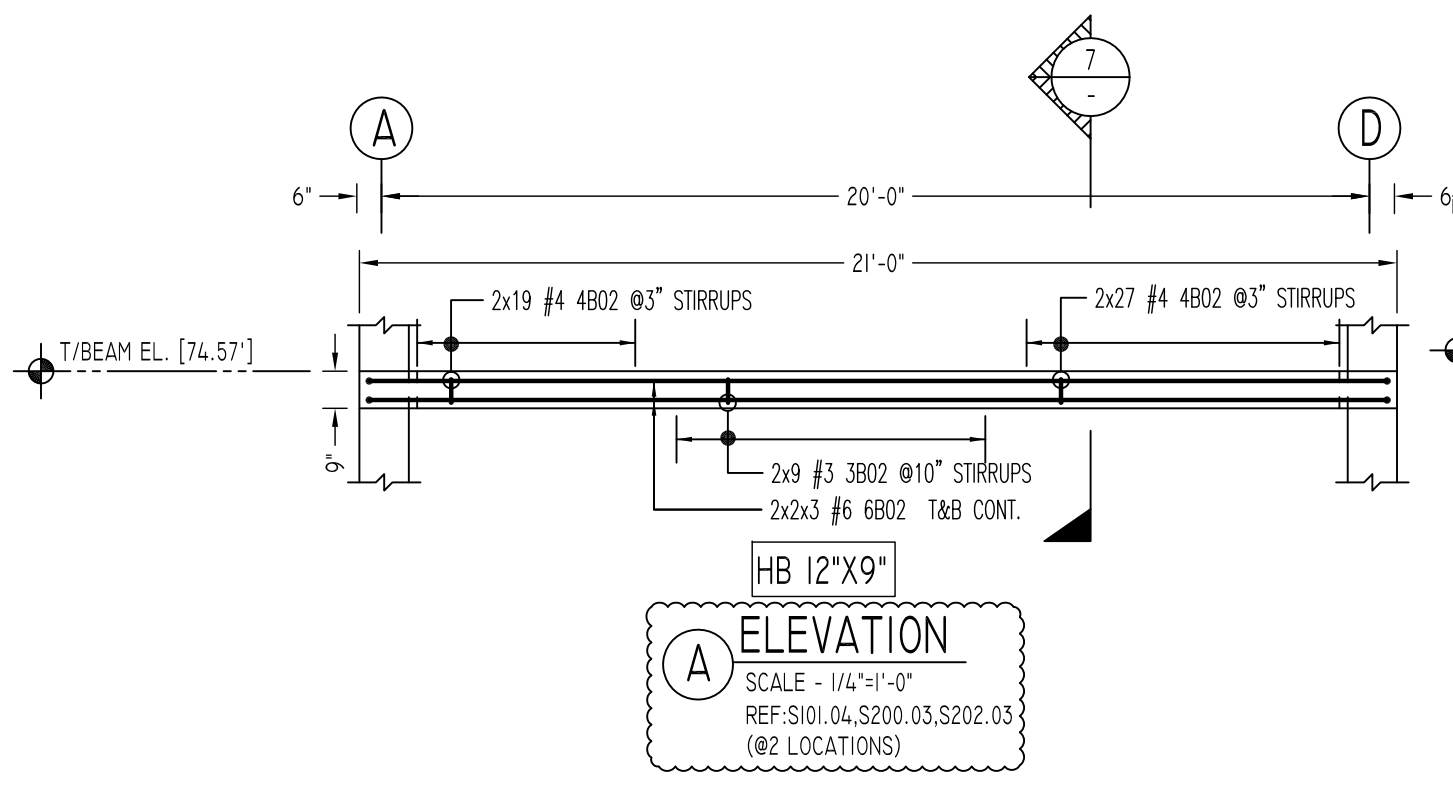
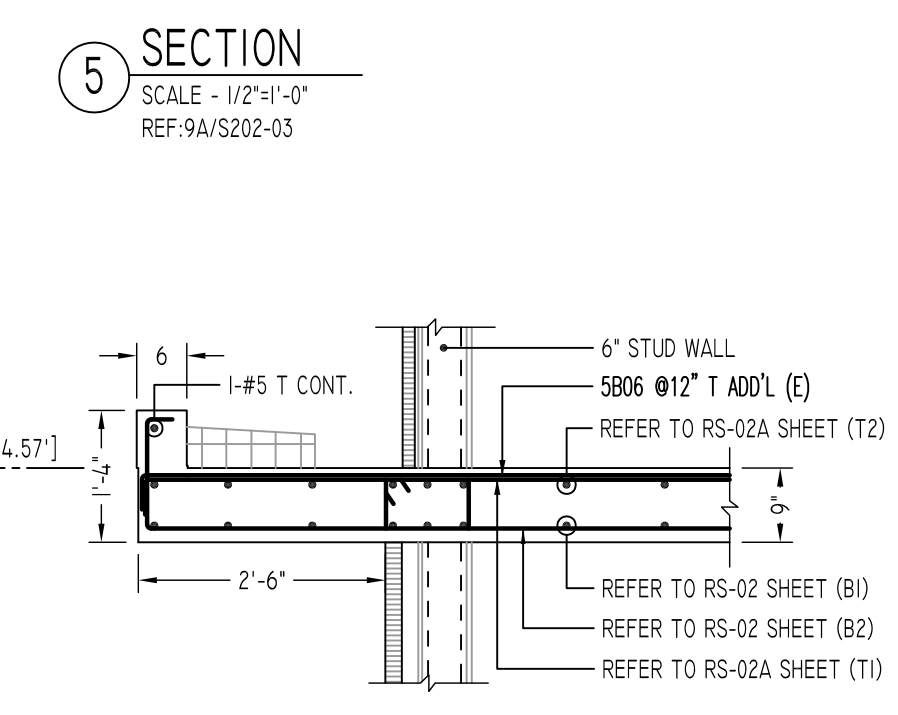
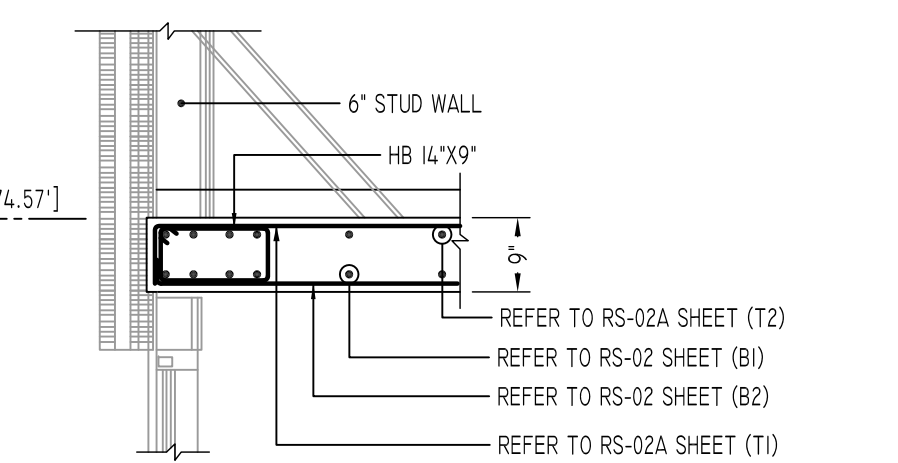
REVISION MARK	REVISION DETAILS	DATE
0	FOR APPROVAL	01/22/2021

PROJECT	142.20 SANFORD AVE
LOCATION	FLUSHING, NY 11355
ARCHITECT	MICHAEL KANG ARCHITECT, PLLC
ENGINEER	LWM ENGINEERING GROUP, LLC.
CUSTOMER	BLUESTONE CONTRACTING
DRAWN BY:	SKM/MRS
DATE:	01/22/21
REVIEWED BY:	T/L
JOB NO.	21010
DRAWING TITLE:	SECOND FLOOR SLAB REINFORCEMENT
DRAWING NO.:	RS-02A



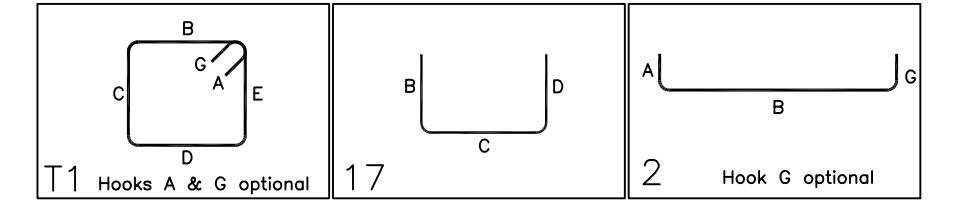


SECOND FLOOR SLAB ADD'L & BEAM REINFORCEMENT DETAILS
SCALE - 1/4"=1'-0"
REF:S-101.04



Release Number: RS-02B		BENDING DETAILS												
Bar Mark	Qty	Size	Total Length	Type	X'	Y'	Z'	V'	W'	U'	T'	S'	R'	Q'
3801	13	#3	3'-8"	T1	0'-4"	0'-11"	0'-8"	0'-11"	0'-8"					
3802	48	#3	3'-2 1/2"	T1	0'-4 1/2"	0'-9"	0'-8"	0'-9"	0'-8"					
3803	8	#3	3'-4 1/2"	T1	0'-4 1/2"	0'-11"	0'-8"	0'-11"	0'-8"					
3804	8	#3	2'-10 1/2"	T1	0'-4 1/2"	0'-7"	0'-8"	0'-7"	0'-8"					
3805	4	#3	4'-4 1/2"	T1	0'-4 1/2"	1'-3"	0'-7"	1'-3"	0'-7"					
4801	170	#4	3'-7"	T1	0'-4 1/2"	0'-11"	0'-8"	0'-11"	0'-8"					
4802	228	#4	3'-3"	T1	0'-4 1/2"	0'-9"	0'-8"	0'-9"	0'-8"					
4803	32	#4	2'-11"	T1	0'-4 1/2"	0'-7"	0'-8"	0'-7"	0'-8"					
4804	2	#4	4'-5"	T1	0'-4 1/2"	1'-3"	0'-7"	1'-3"	0'-7"					
4805	8	#4	6'-9"	T1	0'-4 1/2"	0'-8"	5'-5"	0'-8"	0'-8"					
4806	4	#4	5'-1"	T1	0'-8"	3'-9"	0'-8"	0'-8"	0'-8"					
4807	13	#4	7'-2"	T1	0'-8"	6'-4"	0'-8"	0'-8"	0'-8"					
4808	2	#4	5'-5"	T1	0'-8"	4'-9"	0'-8"	4'-9"	0'-8"					
5804	1	#5	14'-3"	2	0'-10"	13'-5"								
5805	16	#5	5'-8"	T1	0'-8"	5'-0"								
5807	24	#5	7'-5"	T1	0'-8"	6'-9"								
5808	9	#5	8'-2"	T1	0'-8"	7'-6"								
5809	11	#5	4'-8"	T1	0'-8"	4'-0"								
5810	8	#5	5'-5"	T1	0'-8"	4'-9"								
5811	13	#5	6'-8"	T1	0'-8"	6'-0"								
5814	4	#5	5'-1"	T1	0'-7"	4'-6"								
6801	16	#6	15'-4"	2	1'-0"	12'-4"								
6802	20	#6	22'-8"	2	1'-0"	20'-8"								
6803	16	#6	27'-4 1/2"	2	1'-0"	26'-4 1/2"								
6804	12	#6	11'-9"	2	1'-0"	10'-9"								
6805	3	#6	7'-5"	T1	0'-8"	6'-9"								
6806	10	#6	8'-4"	T1	0'-8"	8'-0"								
6807	4	#6	9'-4"	T1	0'-8"	8'-0"								
6808	8	#6	11'-8"	T1	0'-8"	11'-0"								
6809	8	#6	14'-7"	T1	0'-8"	13'-3"	0'-8"							

Release Number: RS-02B(E)		BENDING DETAILS												
Bar Mark	Qty	Size	Total Length	Type	X'	Y'	Z'	V'	W'	U'	T'	S'	R'	Q'
5806	20	#5	6'-11 1/2"	T1	0'-8"	6'-3"								



Abbreviations:
 I.F.=Inside Face
 O.F.=Outside Face
 E.F.=Each Face
 DWL=Dowel
 V=Vertical
 H=Horizontal
 C.B.=Corner Bar
 S.D.W.L.=Slab Dowel
 E.W.=Each Way
 B/BOT.=Bottom
 T=Top
 MDWL.=Masonry Dowel
 B.B.=Bond Beam
 ALT.=Alternate
 Approx.=Approximate

OPNG=Opening
 BAL.=Balance
 BTW.=Between
 C.=Construction Joint
 CLR.=CLEARANCE
 CMU.=Concrete Masonry Unit
 CONT.=Continuous
 EA.=Each
 Elev.=Elevation
 EMB.=Embedment
 SW.=Short Way
 LW.=Long Way
 (BL)=Black Bar
 (EP)=Epoxy Bar
 (GA)=Galvanized

NOTICE

Shortages, improper fabrication or claims for any other reason must be reported to this company within a period of 15 days of delivery. This company reserves the right to field inspect prior to replacement or reconditioning of nonconforming material, and will not honor charges for work done in the field without specific authorization from this company.

REINFORCING STEEL PLACING DRAWINGS ONLY USE IN CONJUNCTION WITH CONTRACT DRAWINGS & SPECIFICATIONS. ELEVATIONS & DIMENSIONS SHOWN ON THIS DRAWING ARE FOR DETAILING PURPOSES ONLY AND SHOULD NOT BE USED FOR CONSTRUCTION UNLESS VERIFIED BY ENGINEER OR CONTRACTOR.

FOR SLAB & BEAM

LAP SCHEDULE		
SIZE	OTHERS	TOP
#3	16"	23"
#4	21"	31"
#5	26"	38"
#6	31"	46"
#7	45"	67"
#8	51"	76"
#9	57"	86"
#10	64"	96"
#11	71"	107"

AVE PLEASE VERIFY COVER VALUE (TYP.)

TYPICAL REINFORCING BAR CLEARANCE TABLE		
LOCATION	MIN. COVER	
SLAB		
TOP & BOTTOM	3/4" CLR	
END	2" CLR	
BEAM (TIES, REINF.)	1 1/2" CLR	

ALL BARS IN THIS DRAWING EXCEPT (E) MENTIONED ARE EPOXY COATED
 ASTM A615 GRADE 60E

FOR EPOXY

LAP SCHEDULE		
SIZE	OTHERS	TOP
#3	24"	35"
#4	32"	47"
#5	39"	57"
#6	47"	69"
#7	68"	101"
#8	77"	114"
#9	86"	129"
#10	96"	144"
#11	107"	161"

REVISION MARK	REVISION DETAILS	DATE
0	FOR APPROVAL	01/22/2021

PROJECT	142.20 SANFORD AVE						
LOCATION	FLUSHING, NY 11355						
ARCHITECT	MICHAEL KANG ARCHITECT, PLLC						
ENGINEER	LMW ENGINEERING GROUP, LLC						
CUSTOMER	BLUESTONE CONTRACTING						
DRAWN BY:	SKM/MRS	DATE:	01/22/21	REVIEWED BY:	T/L	JOB NO.:	21010
DRAWING TITLE:	SECOND FLOOR SLAB & BEAM REINFORCEMENT DETAILS	DRAWING NO.:	RS-02B				