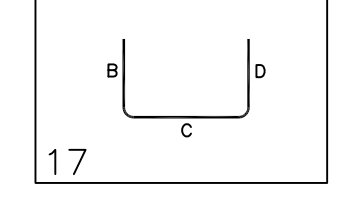


Release Number: RS-07

Bar Mark	Qty	Size	Total Length	Type	X'	Y'	Z'	Y'	Y'	Y'	Y'	Y'	Y'	Y'	Y'
S001	2	#5	39'-10"	17		0'-7"	39'-3"								
S002	11	#5	10'-11"	17		0'-7"	9'-9"	0'-7"							
S004	1	#5	23'-3"	17		0'-7"	22'-1"	0'-7"							
S005	3	#5	35'-1"	17		0'-7"	34'-5"								
S006	3	#5	38'-2"	17		0'-7"	38'-2"								
S007	1	#5	40'-0"	17		0'-7"	39'-5"								
S010	3	#5	23'-0"	17		0'-7"	21'-10"	0'-7"							
S011	4	#5	27'-8"	17		0'-7"	26'-6"	0'-7"							
S012	4	#5	6'-6"	17		0'-7"	5'-4"	0'-7"							
S013	3	#5	4'-1"	17		0'-7"	2'-11"	0'-7"							
S014	3	#5	4'-11"	17		0'-7"	3'-9"	0'-7"							
S015	3	#5	39'-7"	17		0'-7"	39'-0"								
S017	3	#5	18'-11"	17		0'-7"	17'-9"	0'-7"							
S018	3	#5	11'-6"	17		0'-7"	10'-4"	0'-7"							
S019	4	#5	18'-0"	17		0'-7"	16'-10"	0'-7"							
S020	8	#5	14'-5"	17		0'-7"	13'-3"	0'-7"							
S021	40	#5	21'-10"	17		0'-7"	20'-8"	0'-7"							
S022	8	#5	14'-1"	17		0'-7"	12'-11"	0'-7"							
S024	2	#5	26'-0"	17		0'-6"	25'-0"	0'-6"							
S025	4	#5	31'-0"	17		0'-6"	30'-6"								
S028	2	#5	30'-2"	17		0'-7"	29'-7"								

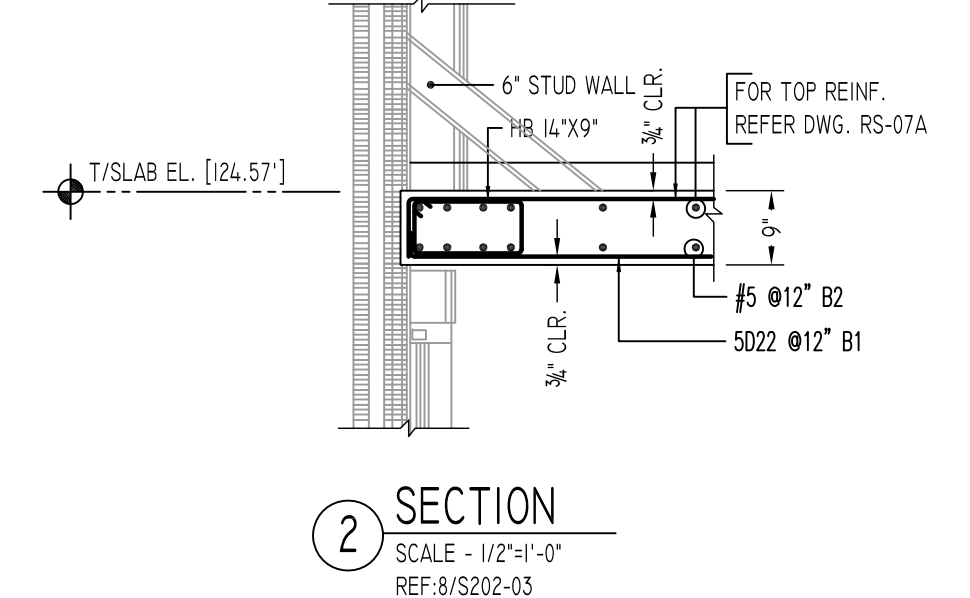
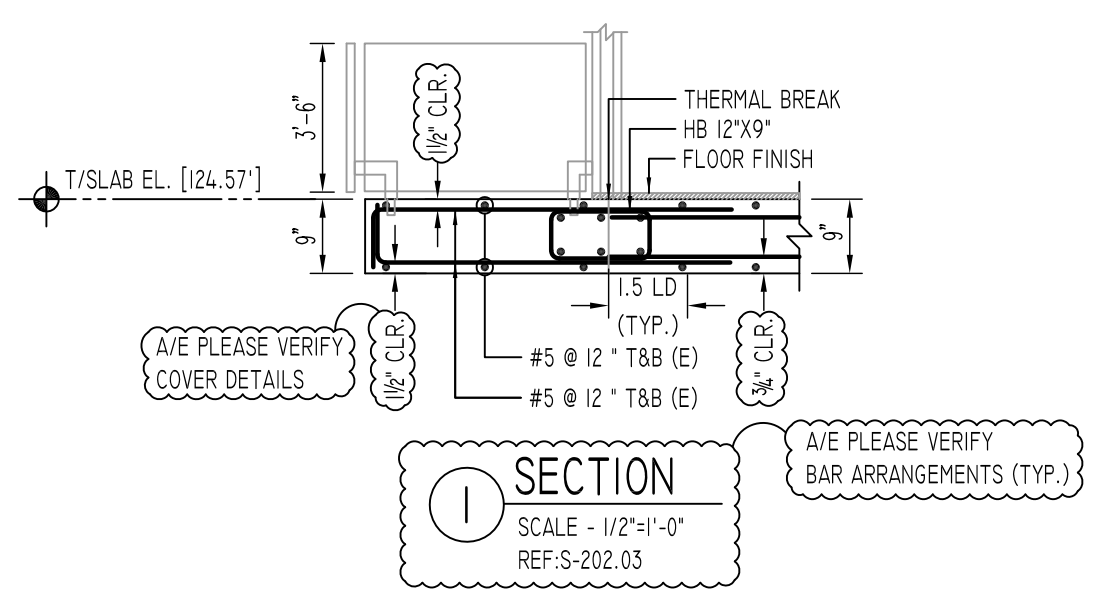
Release Number: RS-07 (EPOXY COATED BWR)

Bar Mark	Qty	Size	Total Length	Type	X'	Y'	Z'	Y'	Y'	Y'	Y'	Y'	Y'	Y'
S015	12	#5	7'-9"	17		0'-6"	7'-3"							
S023	3	#5	11'-5"	17		0'-6"	10'-5"	0'-6"						
S031	11	#5	14'-9"	17		0'-6"	14'-3"							
S032	12	#5	13'-6"	17		0'-6"	13'-0"							



BEAM SCHEDULE

MARK	WIDTH "W"	DEPTH "D"	TOP REINFORCING	BOTTOM REINFORCING	TIES REINFORCING
HB 10X8	10"	8"	3-#6	3-#6	#3@ 10"
HB 10X9	10"	9"	3-#6	3-#6	#3@ 10"
HB 10X10	10"	10"	3-#6	3-#6	#3@ 10"
HB 12X8	12"	8"	3-#6	3-#6	#3@ 10"
HB 12X9	12"	9"	3-#6	3-#6	#3@ 10"
HB 12X10	12"	10"	3-#6	3-#6	#3@ 10"
HB 14X8	14"	8"	4-#6	4-#6	#3@ 10"
HB 14X9	14"	9"	4-#6	4-#6	#3@ 10"
HB 14X10	14"	10"	4-#6	4-#6	#3@ 10"
HB 10X18	10"	18"	2-#5	2-#5	#3@ 6"
HB 10X20	10"	20"	2-#5	2-#5	#3@ 6"
HB 8X10	8"	10"	2-#5	2-#5	#3@ 6"



TYPICAL REINFORCING BAR CLEARANCE TABLE

LOCATION	MIN. COVER
SLAB TOP & BOTTOM	3/4" CLR
END	2" CLR
BEAM (TIES, REINF.)	1 1/2" CLR

FOR SLAB & BEAM LAP SCHEDULE

SIZE	6000 PSI (BLACK)	
	OTHERS	TOP
#3	16"	25"
#4	21"	31"
#5	26"	38"
#6	31"	46"
#7	45"	67"
#8	51"	76"
#9	57"	86"
#10	64"	96"
#11	71"	107"

FOR SLAB LAP SCHEDULE

SIZE	6000 PSI (EPOXY)	
	TOP	OTHERS
#3	35"	24"
#4	47"	32"
#5	57"	39"
#6	69"	47"
#7	101"	68"
#8	114"	77"
#9	129"	86"
#10	144"	96"
#11	161"	107"

ALL BARS IN THIS DRAWING
ASTM A615 GRADE 60 BLACK UNCOATED
EXCEPT (E) MENTIONED ARE EPOXY COATED
ASTM A615 GRADE 60E

Abbreviations:
I.F.=Inside Face
O.F.=Outside Face
E.F.=Each Face
D.W.L.=Dowel
V=Vertical
H=Horizontal
C.B.=Corner Bar
S.D.W.L.=Slab Dowel
E.W.=Each Way
B/BOT.=Bottom
T=Top
M.D.W.L.= Masonry Dowel
B.B.=Bond Beam
A.L.T.=Alternate
Approx.=Approximate

OPNG=Opening
BAL.=Balance
BTW.=Between
CJ=Construction Joint
CLR.=CLEARANCE
CMU.=Concrete Masonry Unit
CONT.=Continuous
EA.=Each
Elev.=Elevation
EMB.=Embedment
SW.=Short Way
LW.=Long Way
(BL)=Black Bar
(EP)=Epoxy Bar
(GA)=Galvanized

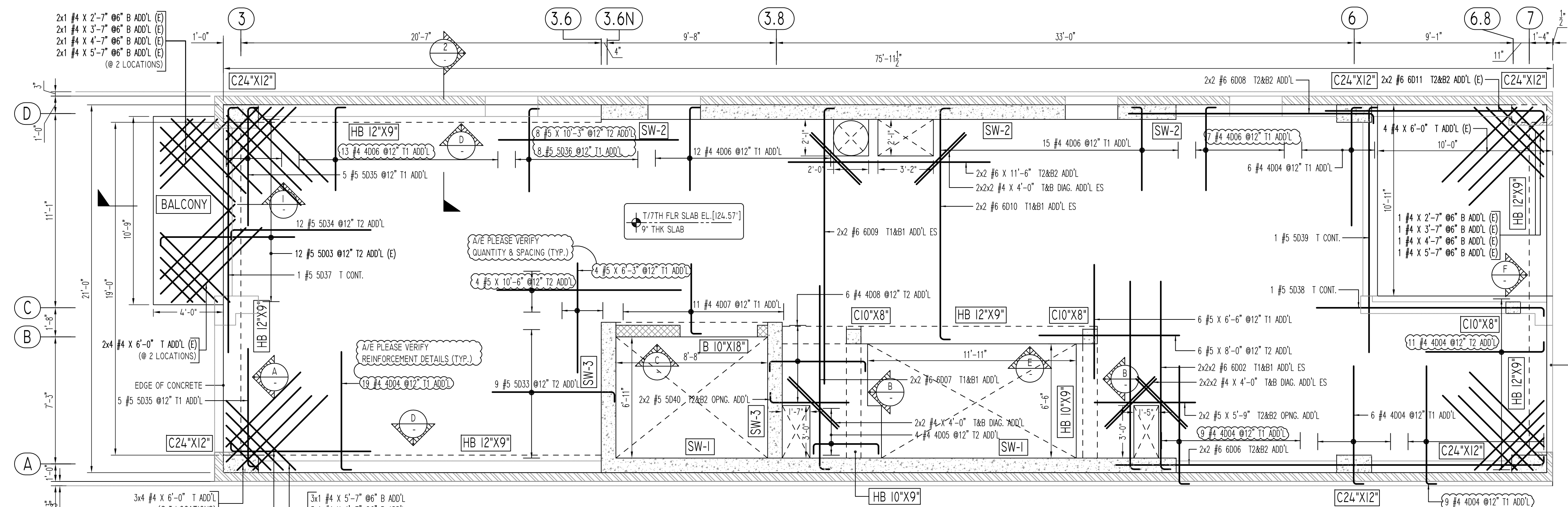
NOTICE

Shortages, improper fabrication or claims for any other reason must be reported to this company within a period of 15 days of delivery. This company reserves the right to field inspect prior to replacement or reconditioning of nonconforming material, and will not honor charges for work done in the field without specific authorization from this company.

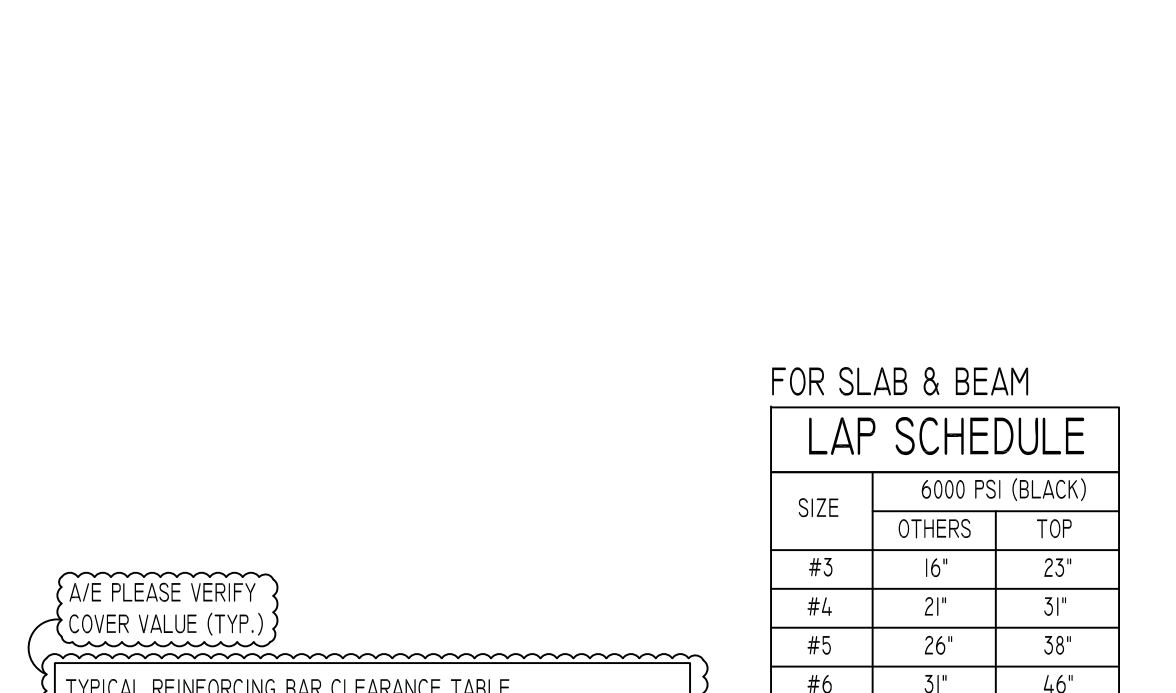
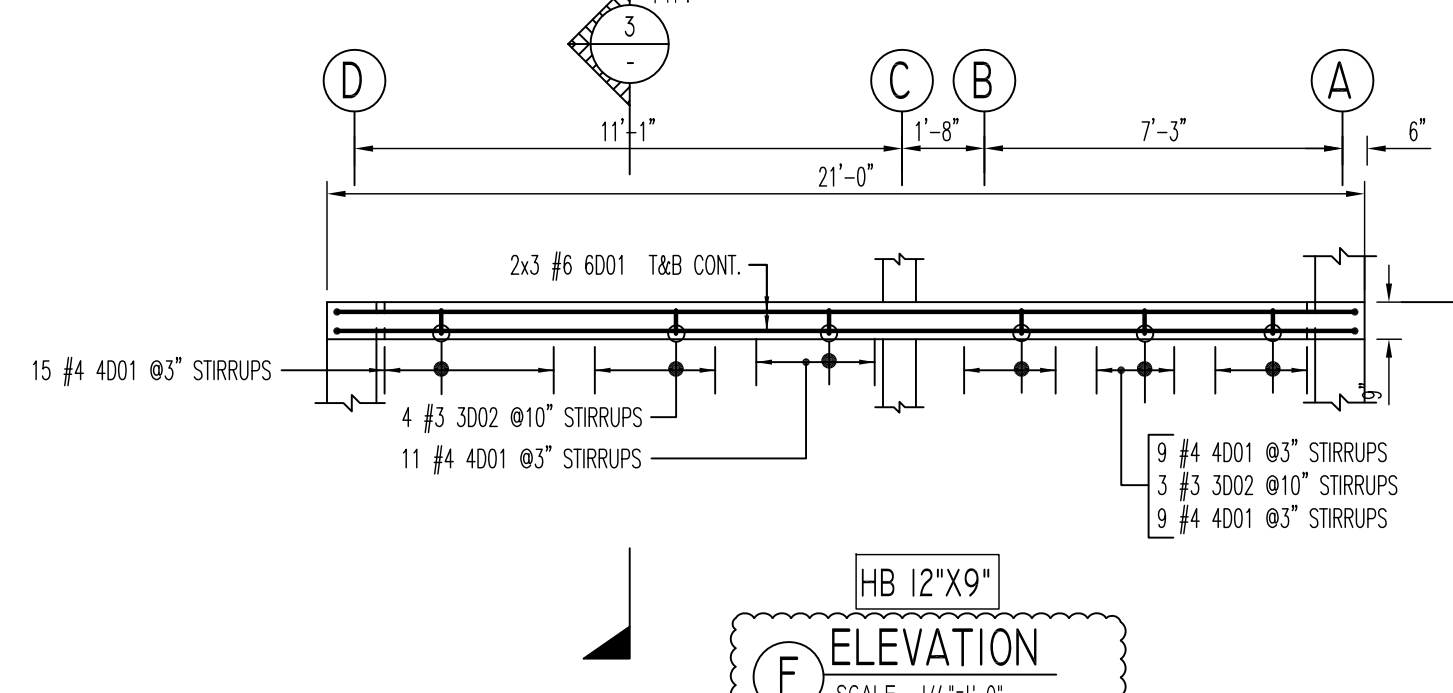
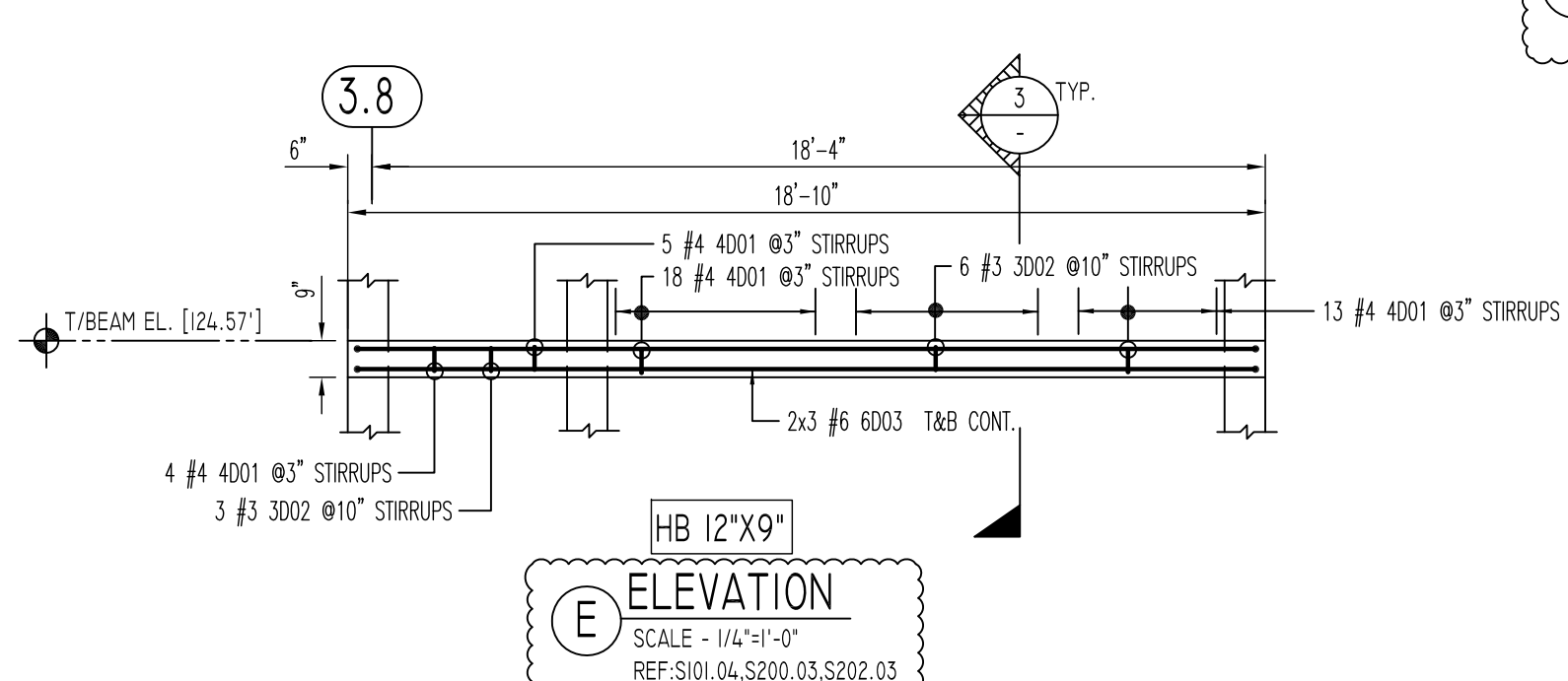
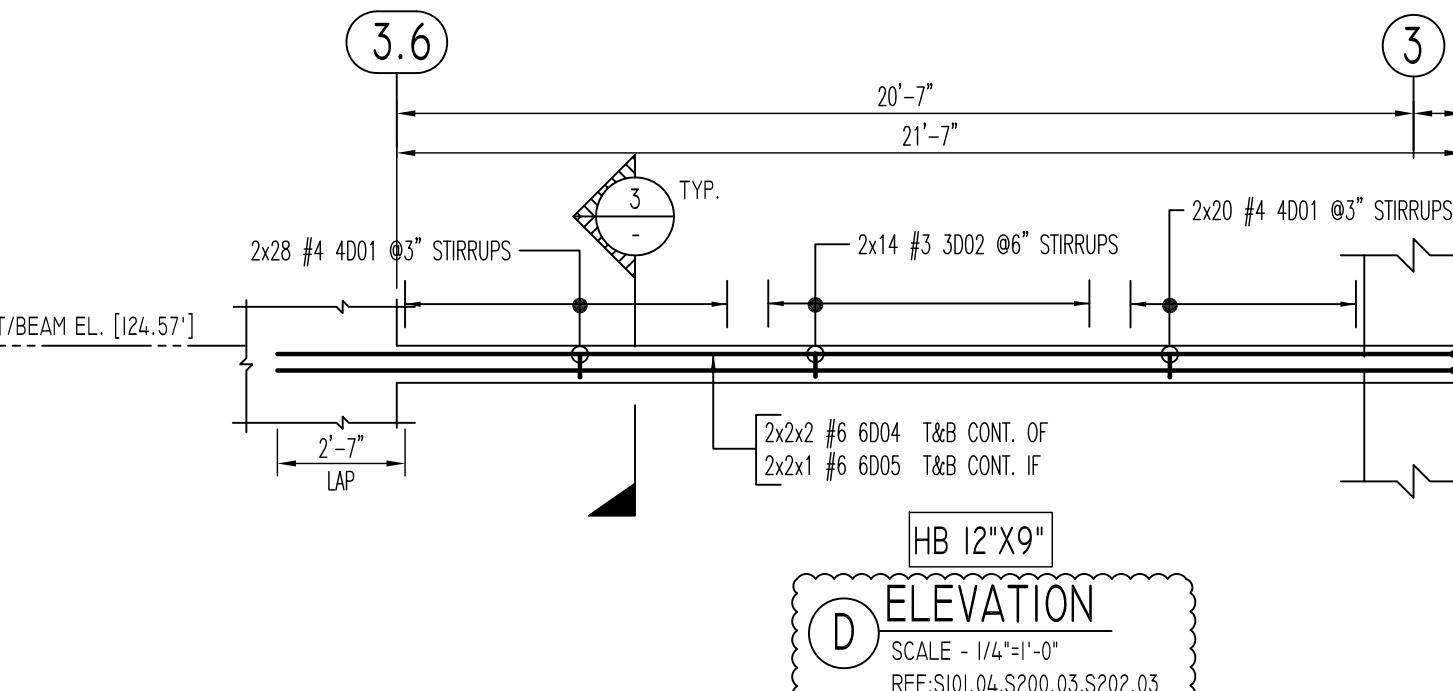
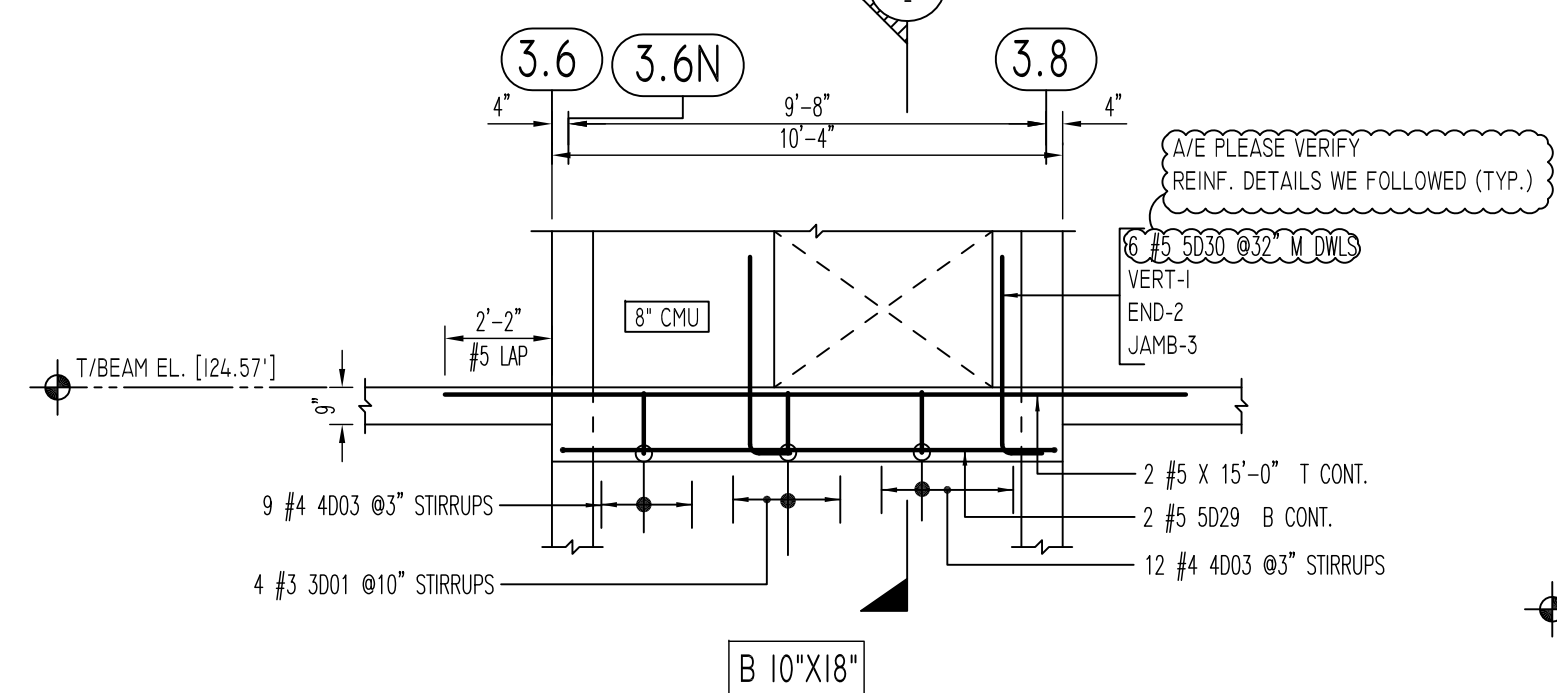
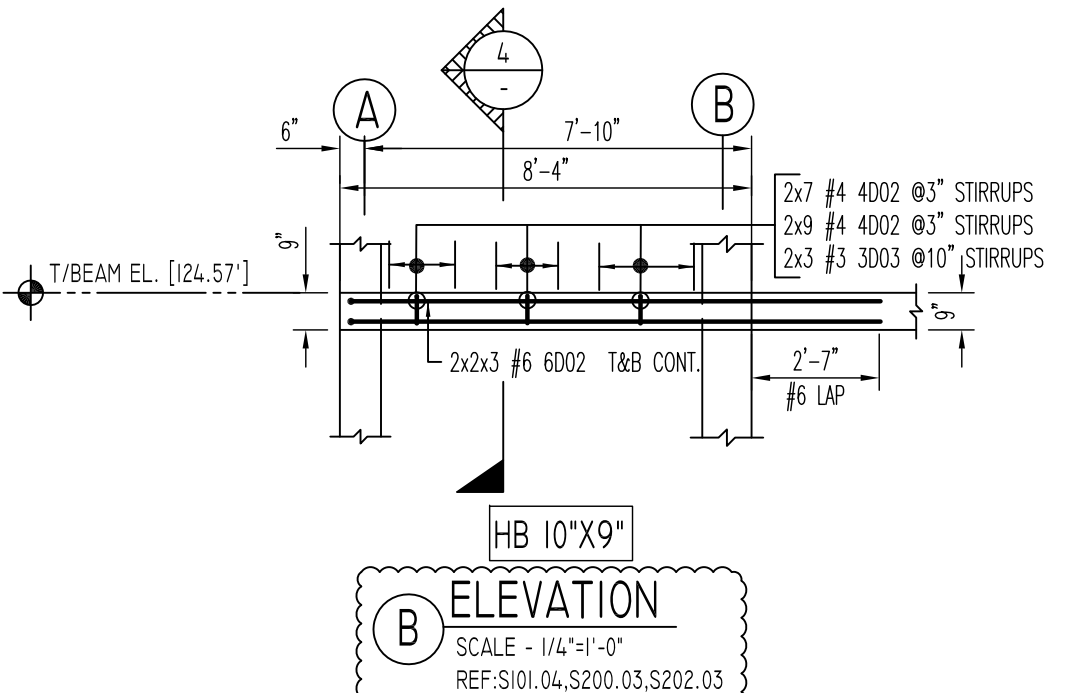
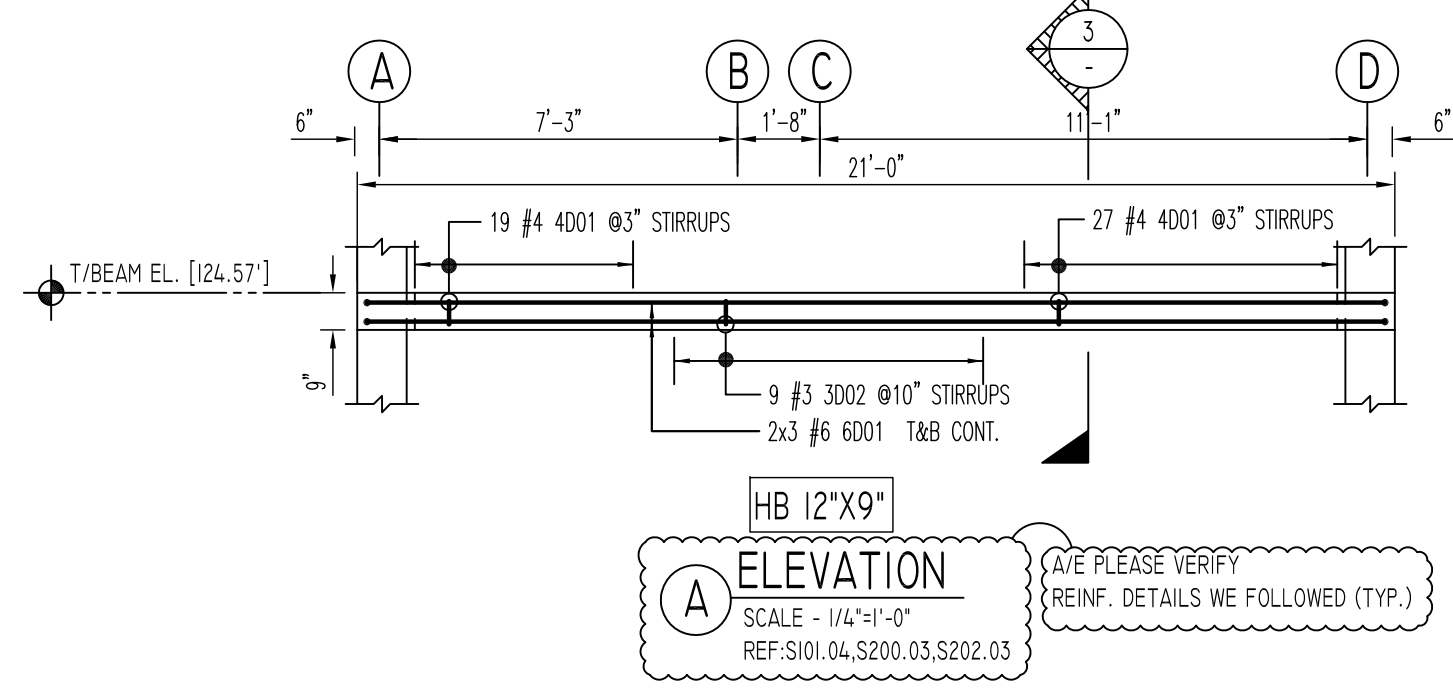
REINFORCING STEEL PLACING DRAWINGS ONLY USE IN CONJUNCTION WITH CONTRACT DRAWINGS & SPECIFICATIONS. ELEVATIONS & DIMENSIONS SHOWN ON THIS DRAWING ARE FOR DETAILING PURPOSES ONLY AND SHOULD NOT BE USED FOR CONSTRUCTION UNLESS VERIFIED BY ENGINEER OR CONTRACTOR.

REVISION MARK	REVISION DETAILS	DATE
0	FOR APPROVAL	01/27/2021

PROJECT	142.20 SANFORD AVE						
LOCATION	FLUSHING, NY 11355						
ARCHITECT	MICHAEL KANG ARCHITECT, PLLC						
ENGINEER	LWM ENGINEERING GROUP, LLC						
CUSTOMER	BLUESTONE CONTRACTING						
DRAWN BY:	IMA/MRS	DATE:	01/27/21	REVIEWED BY:	T/L	JOB NO.:	21010
DRAWING TITLE:						DRAWING NO.:	
SEVENTH FLOOR SLAB REINFORCEMENT DETAILS						RS-07	



SEVENTH FLOOR SLAB ADDITIONALS & BEAMS REINFORCEMENT DETAILS
 SCALE - 1/4"=1'-0"
 REF-S-102.04



TYPICAL REINFORCING BAR CLEARANCE TABLE

LOCATION	MIN. COVER
SLAB	3/4\" CLR
TOP & BOTTOM	2\" CLR
END	2\" CLR
BEAM (TIES, REINF.)	1 1/2\" CLR

FOR SLAB & BEAM LAP SCHEDULE

SIZE	6000 PSI (BLACK)	OTHERS	TOP
#3	16"	23"	
#4	21"	31"	
#5	26"	38"	
#6	31"	46"	
#7	45"	67"	
#8	51"	76"	
#9	57"	86"	
#10	64"	96"	
#11	71"	107"	

FOR SLAB LAP SCHEDULE

SIZE	TOP	OTHERS
#3	35"	24"
#4	47"	32"
#5	57"	39"
#6	69"	47"
#7	101"	68"
#8	114"	77"
#9	129"	86"
#10	144"	96"
#11	161"	107"

BEAM SCHEDULE

MARK	WIDTH 'W'	DEPTH 'D'	TOP REINFORCING	BOTTOM REINFORCING	TIES REINFORCING
HB 10X8	10"	8"	3-#6	3-#6	#3@ 10"
HB 10X9	10"	9"	3-#6	3-#6	#3@ 10"
HB 10X10	10"	10"	3-#6	3-#6	#3@ 10"
HB 12X8	12"	8"	3-#6	3-#6	#3@ 10"
HB 12X9	12"	9"	3-#6	3-#6	#3@ 10"
HB 12X10	12"	10"	3-#6	3-#6	#3@ 10"
HB 14X8	14"	8"	4-#6	4-#6	#3@ 10"
HB 14X9	14"	9"	4-#6	4-#6	#3@ 10"
HB 14X10	14"	10"	4-#6	4-#6	#3@ 10"
HB 10X18	10"	18"	2-#5	2-#5	#3@ 6"
HB 10X20	10"	20"	2-#5	2-#5	#3@ 6"
HB 8X10	8"	10"	2-#5	2-#5	#3@ 6"

Release Number: RS-07B

Bar Mark	Qty	Size	Total Length	Type	X	Y	Z	W	V	U	T	S	R	Q	P	O	N	M	L	K	J	I	H	G	F	E	D	C	B	A
3001	4	#3	4'-4 1/2"	T1	0'-4 1/2"	0'-0"	0'-0"	0'-0"	0'-0"	0'-0"	0'-0"	0'-0"	0'-0"	0'-0"	0'-0"	0'-0"	0'-0"	0'-0"	0'-0"	0'-0"	0'-0"	0'-0"	0'-0"	0'-0"	0'-0"	0'-0"	0'-0"	0'-0"	0'-0"	0'-0"
3002	53	#3	3'-2 1/2"	T1	0'-4 1/2"	0'-6"	0'-9"	0'-6"	0'-9"	0'-6"	0'-9"	0'-6"	0'-9"	0'-6"	0'-9"	0'-6"	0'-9"	0'-6"	0'-9"	0'-6"	0'-9"	0'-6"	0'-9"	0'-6"	0'-9"	0'-6"	0'-9"	0'-6"	0'-9"	0'-6"
3003	6	#3	2'-10 1/2"	T1	0'-4 1/2"	0'-6"	0'-7"	0'-6"	0'-7"	0'-6"	0'-7"	0'-6"	0'-7"	0'-6"	0'-7"	0'-6"	0'-7"	0'-6"	0'-7"	0'-6"	0'-7"	0'-6"	0'-7"	0'-6"	0'-7"	0'-6"	0'-7"	0'-6"	0'-7"	0'-6"
4001	288	#4	3'-3"	T1	0'-4 1/2"	0'-6"	0'-9"	0'-6"	0'-9"	0'-6"	0'-9"	0'-6"	0'-9"	0'-6"	0'-9"	0'-6"	0'-9"	0'-6"	0'-9"	0'-6"	0'-9"	0'-6"	0'-9"	0'-6"	0'-9"	0'-6"	0'-9"	0'-6"	0'-9"	0'-6"
4002	32	#4	2'-11"	T1	0'-4 1/2"	0'-6"	0'-7"	0'-6"	0'-7"	0'-6"	0'-7"	0'-6"	0'-7"	0'-6"	0'-7"	0'-6"	0'-7"	0'-6"	0'-7"	0'-6"	0'-7"	0'-6"	0'-7"	0'-6"	0'-7"	0'-6"	0'-7"	0'-6"	0'-7"	0'-6"
4003	21	#4	4'-5 1/2"	T1	0'-4 1/2"	0'-7"	0'-7"	1'-3"	0'-7"	0'-7"	1'-3"	0'-7"	0'-7"	1'-3"	0'-7"	0'-7"	1'-3"	0'-7"	0'-7"	1'-3"	0'-7"	0'-7"	1'-3"	0'-7"	0'-7"	1'-3"	0'-7"	0'-7"	1'-3"	0'-7"
4004	60	#4	7'-4"	T1	0'-4 1/2"	0'-7"	0'-7"	0'-7"	0'-7"	0'-7"	0'-7"	0'-7"	0'-7"	0'-7"	0'-7"	0'-7"	0'-7"	0'-7"	0'-7"	0'-7"	0'-7"	0'-7"	0'-7"	0'-7"	0'-7"	0'-7"	0'-7"	0'-7"	0'-7"	0'-7"
4005	4	#4	4'-11 1/2"	T1	0'-4 1/2"	0'-7"	0'-7"	0'-7"	0'-7"	0'-7"	0'-7"	0'-7"	0'-7"	0'-7"	0'-7"	0'-7"	0'-7"	0'-7"	0'-7"	0'-7"	0'-7"	0'-7"	0'-7"	0'-7"	0'-7"	0'-7"	0'-7"	0'-7"	0'-7"	0'-7"
4006	47	#4	5'-4 1/2"	T1	0'-4 1/2"	0'-7"	0'-7"	0'-7"	0'-7"	0'-7"	0'-7"	0'-7"	0'-7"	0'-7"	0'-7"	0'-7"	0'-7"	0'-7"	0'-7"	0'-7"	0'-7"	0'-7"	0'-7"	0'-7"	0'-7"	0'-7"	0'-7"	0'-7"	0'-7"	0'-7"
4007	11	#4	4'-7 1/2"	T1	0'-4 1/2"	0'-7"	0'-7"	0'-7"	0'-7"	0'-7"	0'-7"	0'-7"	0'-7"	0'-7"	0'-7"	0'-7"	0'-7"	0'-7"	0'-7"	0'-7"	0'-7"	0'-7"	0'-7"	0'-7"	0'-7"	0'-7"	0'-7"	0'-7"	0'-7"	0'-7"
4008	6	#4	6'-8 1/2"	T1	0'-4 1/2"	0'-7"	0'-7"	0'-7"	0'-7"	0'-7"	0'-7"	0'-7"	0'-7"	0'-7"	0'-7"	0'-7"	0'-7"	0'-7"	0'-7"	0'-7"	0'-7"	0'-7"	0'-7"	0'-7"	0'-7"	0'-7"	0'-7"	0'-7"	0'-7"	0'-7"
5029	2	#5	11'-8"	2	0'-10"	0'-10"	0'-10"	0'-10"	0'-10"	0'-10"	0'-10"	0'-10"	0'-10"	0'-10"	0'-10"	0'-10"	0'-10"	0'-10"	0'-10"	0'-10"	0'-10"	0'-10"	0'-10"	0'-10"	0'-10"	0'-10"	0'-10"	0'-10"	0'-10"	0'-10"
5030	6	#5	4'-10"	2	0'-10"	0'-10"	0'-10"	0'-10"	0'-10"	0'-10"	0'-10"	0'-10"	0'-10"	0'-10"	0'-10"	0'-10"	0'-10"	0'-10"	0'-10"	0'-10"	0'-10"	0'-10"	0'-10"	0'-10"	0'-10"	0'-10"	0'-10"	0'-10"	0'-10"	0'-10"
5033	9	#5	7'-7 1/2"	T1	0'-7"	0'-7"	0'-7"	0'-7"	0'-7"	0'-7"	0'-7"	0'-7"	0'-7"	0'-7"	0'-7"	0'-7"	0'-7"	0'-7"	0'-7"	0'-7"	0'-7"	0'-7"	0'-7"	0'-7"	0'-7"	0'-7"	0'-7"	0'-7"	0'-7"	0'-7"
5034	17	#5	8'-7 1/2"	T1	0'-7"	0'-7"	0'-7"	0'-7"	0'-7"	0'-7"	0'-7"	0'-7"	0'-7"	0'-7"	0'-7"	0'-7"	0'-7"	0'-7"	0'-7"	0'-7"	0'-7"	0'-7"	0'-7"	0'-7"	0'-7"	0'-7"	0'-7"	0'-7"	0'-7"	0'-7"
5035	10	#5	10'-5 1/2"	T1	0'-7"	0'-7"	0'-7"	0'-7"	0'-7"	0'-7"	0'-7"	0'-7"	0'-7"	0'-7"	0'-7"	0'-7"	0'-7"	0'-7"	0'-7"	0'-7"	0'-7"	0'-7"	0'-7"	0'-7"	0'-7"	0'-7"	0'-7"	0'-7"	0'-7"	0'-7"
5036	6	#5	5'-4 1/2"	T1	0'-7"	0'-7"	0'-7"	0'-7"	0'-7"	0'-7"	0'-7"	0'-7"	0'-7"	0'-7"	0'-7"	0'-7"	0'-7"	0'-7"	0'-7"	0'-7"	0'-7"	0'-7"	0'-7"	0'-7"	0'-7"	0'-7"	0'-7"	0'-7"	0'-7"	0'-7"
5037	1	#5	14'-7 1/2"	T1	0'-7"	0'-7"	0'-7"	0'-7"	0'-7"	0'-7"	0'-7"	0'-7"	0'-7"	0'-7"	0'-7"	0'-7"	0'-7"	0'-7"	0'-7"	0'-7"	0'-7"	0'-7"	0'-7"	0'-7"	0'-7"	0'-7"	0'-7"	0'-7"	0'-7"	0'-7"
5038	1	#5	15'-6 1/2"	T1	0'-7"	0'-7"	0'-7"	0'-7"	0'-7"	0'-7"	0'-7"	0'-7"	0'-7"	0'-7"	0'-7"	0'-7"	0'-7"	0'-7"	0'-7"	0'-7"	0'-7"	0'-7"	0'-7"	0'-7"	0'-7"	0'-7"	0'-7"	0'-7"	0'-7"	0'-7"
5039	1	#5	14'-6 1/2"	T1	0'-7"	0'-7"	0'-7"	0'-7"	0'-7"	0'-7"	0'-7"	0'-7"	0'-7"	0'-7"	0'-7"	0'-7"	0'-7"	0'-7"	0'-7"	0'-7"	0'-7"	0'-7"	0'-7"	0'-7"	0'-7"	0'-7"	0'-7"	0'-7"	0'-7"	0'-7"
5040	4	#5	5'-1 1/2"	T1	0'-7"	0'-7"	0'-7"	0'-7"	0'-7"	0'-7"	0'-7"	0'-7"	0'-7"	0'-7"	0'-7"	0'-7"	0'-7"	0'-7"	0'-7"	0'-7"	0'-7"	0'-7"	0'-7"	0'-7"	0'-7"	0'-7"	0'-7"	0'-7"	0'-7"	0'-7"
6001	12	#6	21'-10 1/2"	T1	0'-7"	0'-7"	0'-7"	0'-7"	0'-7"	0'-7"	0'-7"	0'-7"	0'-7"	0'-7"	0'-7"	0'-7"	0'-7"	0'-7"	0'-7"	0'-7"	0'-7"	0'-7"	0'-7"	0'-7"	0'-7"	0'-7"	0'-7"	0'-7"	0'-7"	0'-7"
6002	20	#6	11'-4 1/2"	T1	0'-7"	0'-7"	0'-7"	0'-7"	0'-7"	0'-7"	0'-7"	0'-7"	0'-7"	0'-7"	0'-7"	0'-7"	0'-7"	0'-7"	0'-7"	0'-7"	0'-7"	0'-7"	0'-7"	0'-7"	0'-7"	0'-7"	0'-7"	0'-7"	0'-7"	0'-7"
6003	6	#6	19'-8 1/2"	T1	0'-7"	0'-7"	0'-7"	0'-7"	0'-7"	0'-7"	0'-7"	0'-7"	0'-7"	0'-7"	0'-7"	0'-7"	0'-7"	0'-7"	0'-7"	0'-7"	0'-7"	0'-7"	0'-7"	0'-7"	0'-7"	0'-7"	0'-7"	0'-7"	0'-7"	0'-7"
6004	8	#6	24'-5 1/2"	T1	0'-7"	0'-7"	0'-7"	0'-7"	0'-7"	0'-7"	0'-7"	0'-7"	0'-7"	0'-7"	0'-7"	0'-7"	0'-7"	0'-7"	0'-7"	0'-7"	0'-7"	0'-7"	0'-7"	0'-7"	0'-7"	0'-7"	0'-7"	0'-7"	0'-7"	0'-7"
6005	4	#6	22'-5 1/2"	T1	0'-7"	0'-7"	0'-7"	0'-7"	0'-7"	0'-7"	0'-7"	0'-7"	0'-7"	0'-7"	0'-7"	0'-7"	0'-7"	0'-7"	0'-7"	0'-7"	0'-7"	0'-7"	0'-7"	0'-7"	0'-7"	0'-7"	0'-7"	0'-7"	0'-7"	0'-7"
6006	4	#6	25'-0 1/2"	T1	0'-7"	0'-7"	0'-7"	0'-7"	0'-7"	0'-7"	0'-7"	0'-7"	0'-7"	0'-7"	0'-7"	0'-7"	0'-7"	0'-7"	0'-7"	0'-7"	0'-7"	0'-7"	0'-7"	0'-7"	0'-7"	0'-7"	0'-7"	0'-7"	0'-7"	0'-7"
6007	4	#6	11'-1 1/2"	T1	0'-7"	0'-7"	0'-7"	0'-7"	0'-7"	0'-7"	0'-7"	0'-7"	0'-7"	0'-7"	0'-7"	0'-7"	0'-7"	0'-7"	0'-7"	0'-7"	0'-7"	0'-7"	0'-7"	0'-7"	0'-7"	0'-7"	0'-7"	0'-7"	0'-7"	0'-7"
6008	4	#6	14'-7 1/2"	T1	0'-7"	0'-7"	0'-7"	0'-7"	0'-7"	0'-7"	0'-7"	0'-7"	0'-7"	0'-7"	0'-7"	0'-7"	0'-7"	0'-7"	0'-7"	0'-7"	0'-7"	0'-7"	0'-7"	0'-7"	0'-7"	0'-7"	0'-7"	0'-7"	0'-7"	0'-7"
6009	4	#6	16'-4 1/2"	T1	0'-7"	0'-7"	0'-7"	0'-7"	0'-7"	0'-7"	0'-7"	0'-7"	0'-7"	0'-7"	0'-7"	0'-7"	0'-7"	0'-7"	0'-7"	0'-7"	0'-7"	0'-7"	0'-7"	0'-7"	0'-7"	0'-7"	0'-7"	0'-7"	0'-7"	0'-7"
6010	4	#6	14'-5 1/2"	T1	0'-7"	0'-7"	0'-7"	0'-7"	0'-7"	0'-7"	0'-7"	0'-7"	0'-7"	0'-7"	0'-7"	0'-7"	0'-7"	0'-7"	0'-7"	0'-7"	0'-7"	0'-7"	0'-7"	0'-7"	0'-7"	0'-7"	0'-7"	0'-7"	0'-7"	0'-7"

Release Number: RS-07B (EPOXY COATED BAR)

Bar Mark	Qty	Size	Total Length	Type	X	Y	Z	W	V	U	T	S	R	Q	P	O	N	M	L	K	J	I	H	G	F	E	D	C	B	A
5003	12	#5	8'-2 1/2"	T1	0'-6"	0'-7"	0'-7"	0'-6"	0'-7"	0'-7"	0'-6"	0'-7"	0'-7"	0'-6"	0'-7"	0'-7"	0'-6"	0'-7"	0'-7"	0'-6"	0'-7"	0'-7"	0'-6"	0'-7"	0'-7"	0'-6"	0'-7"	0'-7"	0'-6"	0'-7"
6011	4	#6	13'-1 1/2"	T1	0'-7"	0'-7"	0'-7"	0'-7"	0'-7"	0'-7"	0'-7"	0'-7"	0'-7"	0'-7"	0'-7"	0'-7"	0'-7"	0'-7"	0'-7"	0'-7"	0'-7"	0'-7"	0'-7"	0'-7"	0'-7"	0'-7"	0'-7"	0'-7"	0'-7"	0'-7"

