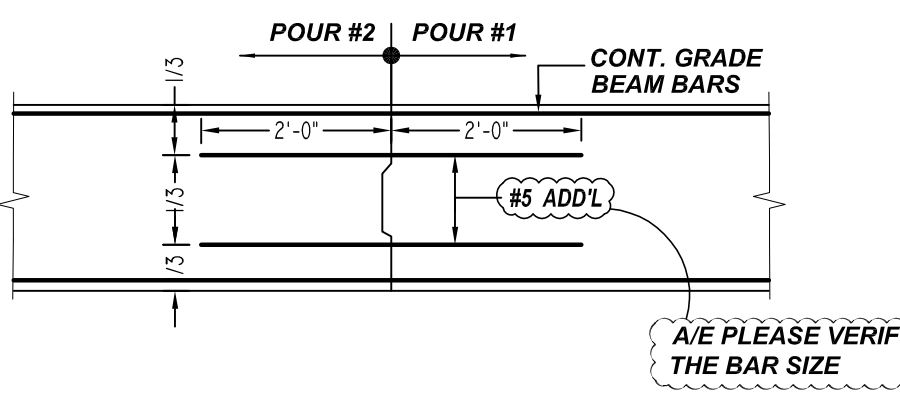
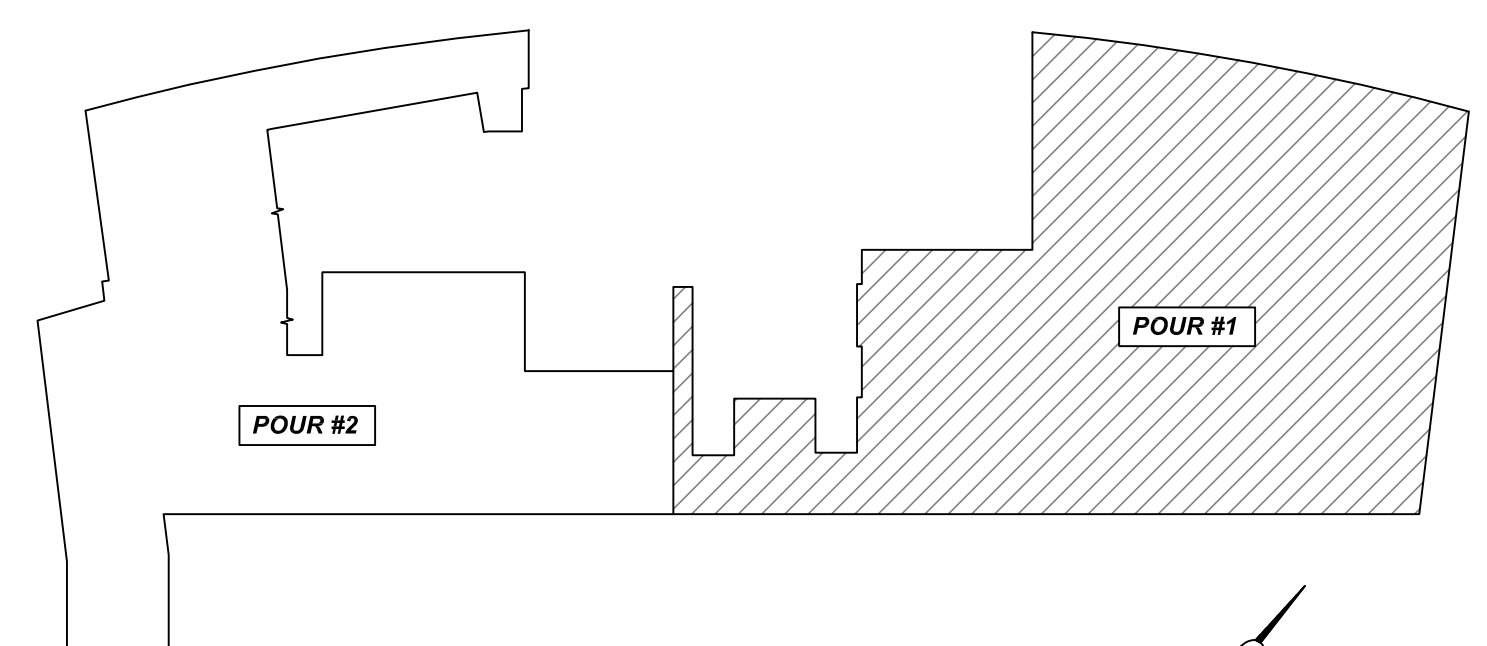


OFFICE BUILDING - MEZZANINE FLOOR BEAM POUR #1 LAYOUT
 SCALE - 1/8"=1'-0"
 REF: S2.01.5



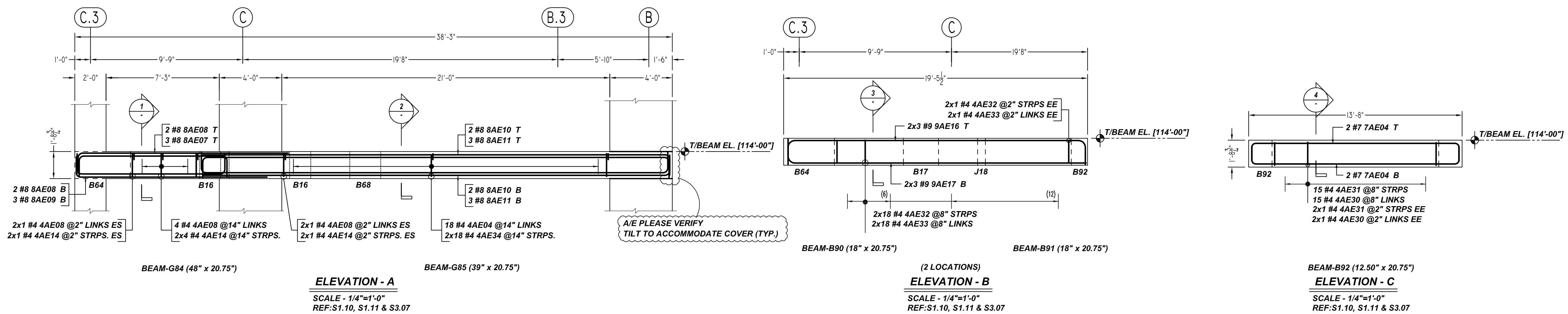
TYPICAL GRADE BEAM CONSTRUCTION JOINT
 SCALE - 1/2"=1'-0"
 REF: 19/S3.04



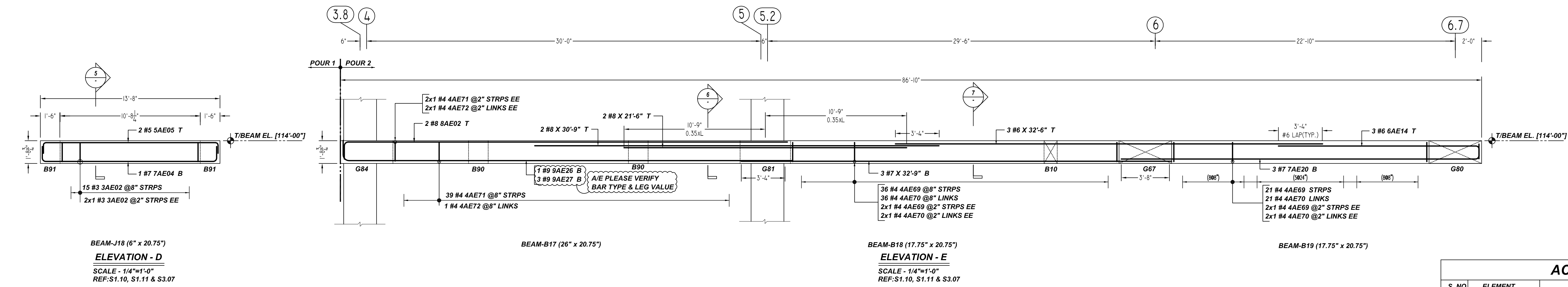
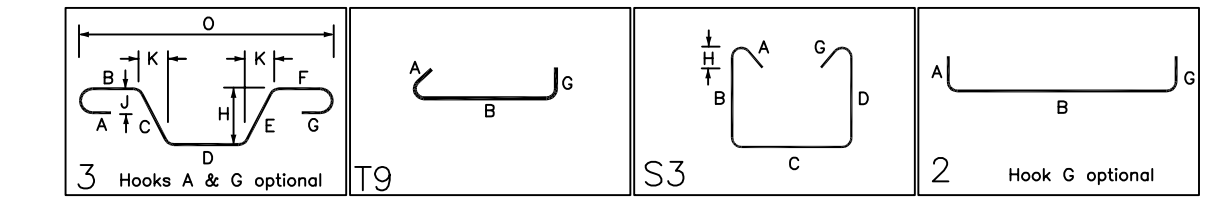
OFFICE BUILDING MEZZANINE LEVEL - KEY PLAN
 N.T.S.

THE PLACING DRAWING IS D'AMBRA'S INTERPRETATION OF THE CONTRACT DRAWINGS. IT IS NOT INTENDED AS A STANDALONE DOCUMENT AND MUST ALWAYS BE USED IN CONJUNCTION WITH THE CONTRACT DRAWINGS.

				SHEET TITLE:		
				OFFICE BUILDING MEZZANINE FLOOR BEAM (POUR #1) REINFORCEMENT DETAILS		
				PROJECT:		
				GRANITE PARK VI		
				LOCATION:		
				PLANO, TEXAS		
				CUSTOMER:		
				AUSTIN COMMERCIAL		
				ENGINEER:		
				L.A FUESS PARTNERS		
				DETAILER:		SHEET #
				BCS		21022
ISS.	BY.	DATE	DESCRIPTION			
0	BCS	12/23/21	FOR APPROVAL			



Bar Mark	Qty	Size	Total Length	Type	X	Y	Z	Y'	Y''	Y'''	Y''''	Y'''''	Y''''''	Y'''''''	Y''''''''
3AE02	17	#3	4'-2 1/2"	S	0'-0"	0'-0"	0'-0"	1'-5 1/2"	0'-3 1/2"	1'-5 1/2"	0'-0"				
4AE04	18	#4	3'-0"	TB	0'-4 1/2"	2'-11"		0'-3 1/2"		0'-0"					
4AE08	8	#4	4'-0"	TB	0'-4 1/2"	3'-9"				0'-4 1/2"					
4AE14	18	#4	6'-6 1/2"	S3	0'-4 1/2"	1'-5 1/2"	2'-10 1/2"	1'-5 1/2"		0'-4 1/2"	0'-5"				
4AE20	17	#4	1'-8 1/2"	TB	0'-4 1/2"	0'-4 1/2"	0'-9 1/2"	1'-5 1/2"		0'-4 1/2"					
4AE31	17	#4	4'-0"	S3	0'-4 1/2"	1'-5 1/2"	0'-9 1/2"	1'-5 1/2"		0'-4 1/2"	0'-5"				
4AE32	40	#4	4'-11 1/2"	S3	0'-4 1/2"	1'-5 1/2"	1'-3"	1'-5 1/2"		0'-4 1/2"	0'-5"				
4AE33	40	#4	2'-0"	TB	0'-4 1/2"	1'-5"				0'-4 1/2"					
4AE34	36	#4	5'-9 1/2"	S3	0'-4 1/2"	1'-4 1/2"	2'-2 1/2"	1'-4 1/2"		0'-4 1/2"	0'-5"				
4AE39	6	#4	4'-11 1/2"	S3	0'-4 1/2"	1'-5 1/2"	1'-2 1/2"	1'-5 1/2"		0'-4 1/2"	0'-5"				
4AE40	6	#4	1'-11 1/2"	TB	0'-4 1/2"	1'-2 1/2"				0'-4 1/2"					
4AE71	4	#4	5'-7 1/2"	S3	0'-4 1/2"	1'-5 1/2"		1'-11"	1'-5 1/2"		0'-4 1/2"	0'-5"			
4AE72	3	#4	2'-0"	TB	0'-4 1/2"	1'-11"				0'-4 1/2"					
5AE05	2	#5	15'-0"	T	0'-10"	15'-4"									
6AE14	3	#6	16'-3 1/2"	T	1'-0"	15'-3 1/2"									
7AE04	5	#7	15'-0"	T	1'-2"	15'-4"						1'-2"			
7AE20	3	#7	28'-5"	T	1'-2"	27'-5"									
8AE02	2	#8	35'-1"	T	1'-4"	33'-9"									
8AE07	3	#8	14'-10"	T	1'-4"	15'-4"									
8AE08	4	#8	12'-2 1/2"	T	1'-4"	9'-6 1/2"						1'-4"			
8AE09	3	#8	13'-7"	T	1'-4"	12'-5"									
8AE10	4	#8	33'-7 1/2"	T	1'-4"	29'-11 1/2"									
8AE11	6	#8	33'-3 1/2"	T	1'-4"	29'-11 1/2"									
8AE16	6	#8	22'-3 1/2"	T	1'-7"	19'-1 1/2"									
8AE17	6	#8	22'-8 1/2"	T	1'-7"	19'-1 1/2"									
8AE26	1	#8	36'-11"	T	1'-7"	33'-9"									
8AE27	3	#8	35'-10"	T	1'-7"	34'-5"									



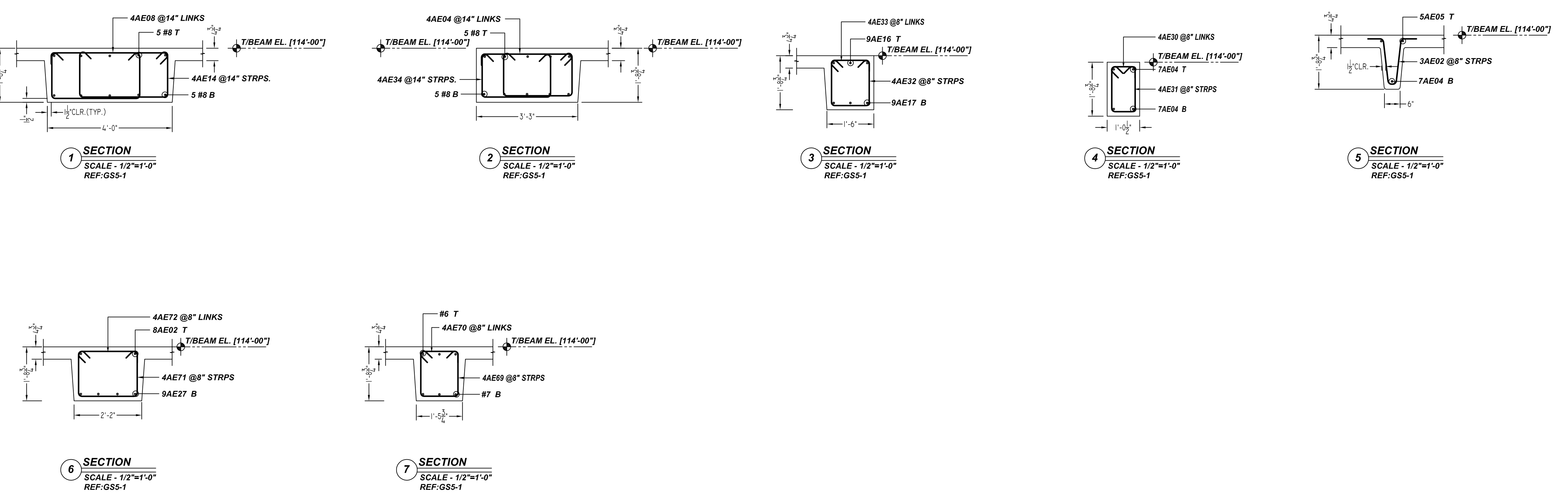
ACCESSORIES DETAILS					
S. NO	ELEMENT	DESCRIPTION	PCS	LFT	REMARK
1	BEAM	2" HT BOLSTER @4'-0" C/C	45	170	FOR BEAM SUPPORT (@ BOTTOM)

TYPICAL REINFORCING BAR CLEARANCE TABLE	
LOCATION	MIN. COVER
ALL EXTERIOR BEAM	2" CLR
ALL INTERIOR BEAM	1 1/2" CLR

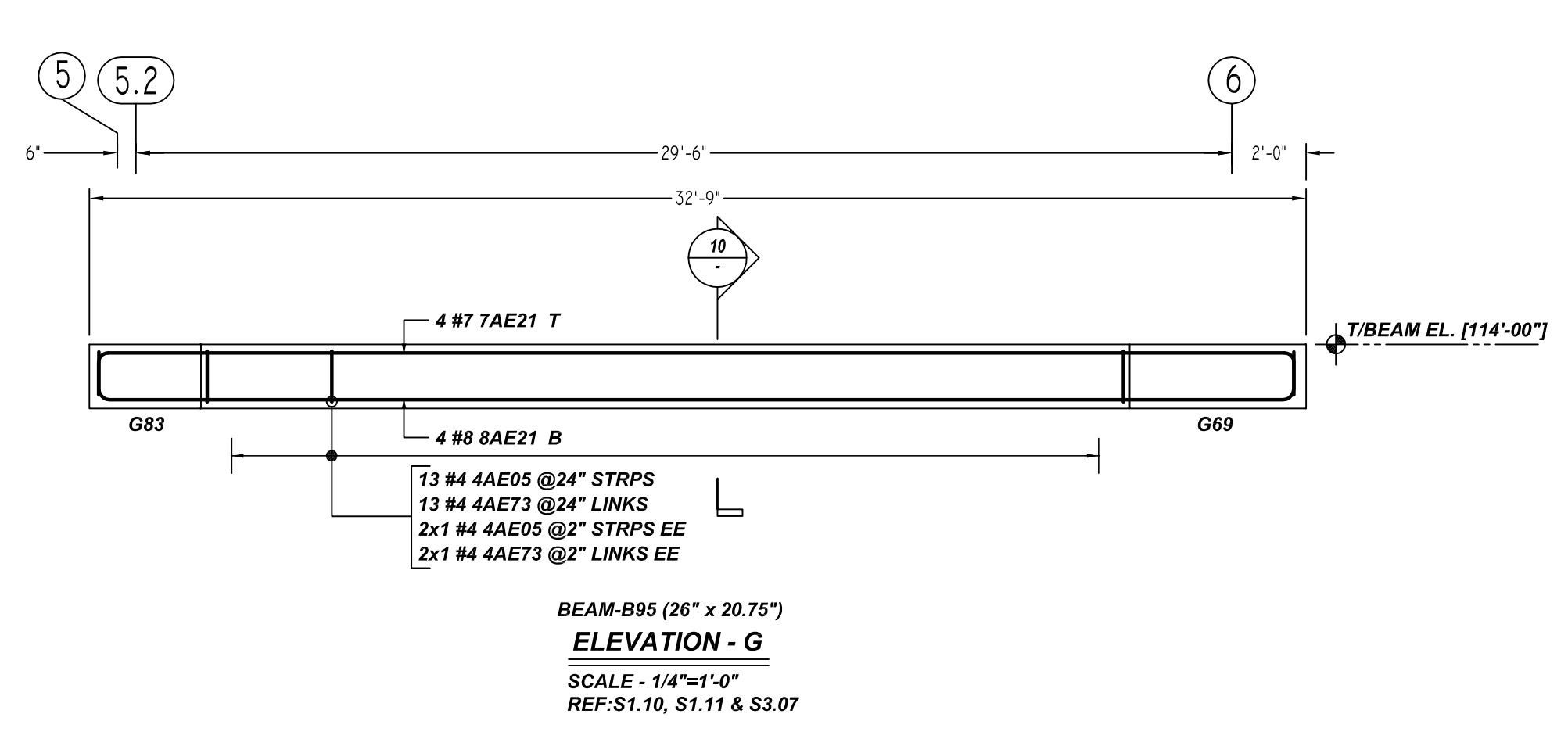
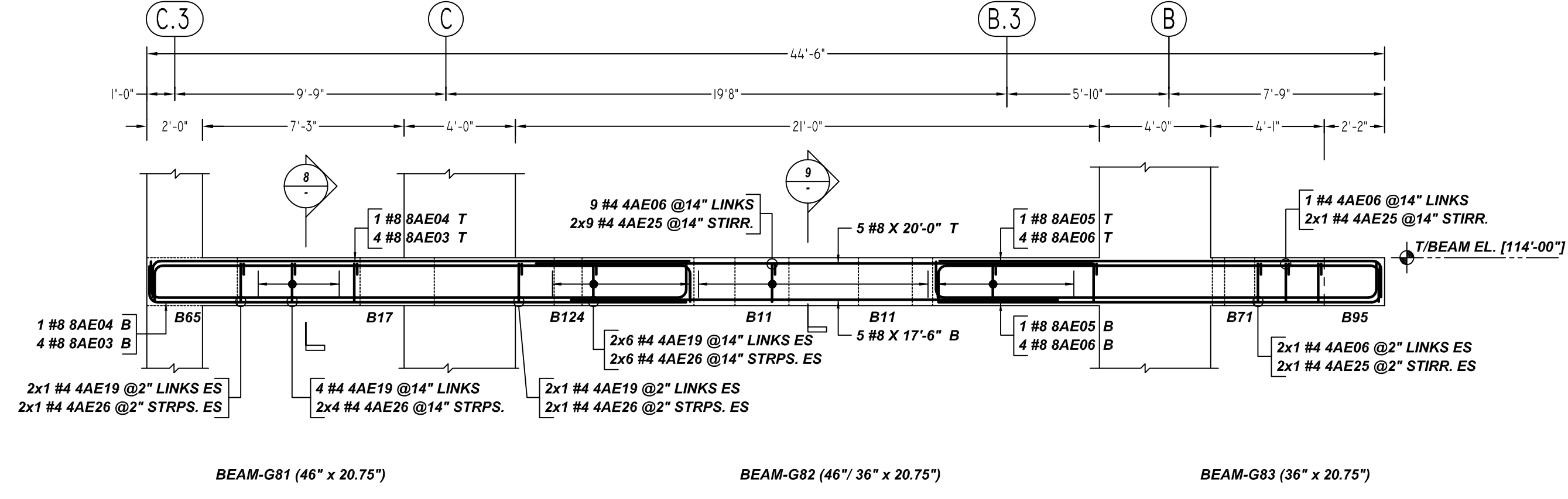
BEAMS & JOIST		
LAP SCHEDULE		
SIZE	6000 PSI	
	TOP	BOTTOM
#3	20"	16"
#4	26"	20"
#5	33"	25"
#6	40"	31"
#7	58"	44"
#8	66"	51"
#9	74"	63"
#10	83"	70"
#11	93"	78"

NOTE:
 1. A/E PLEASE VERIFY THE ALL BEAM BAR ARRANGEMENTS
 2. FIELD BEND AS REQUIRED AT ARC BEAM LOCATIONS

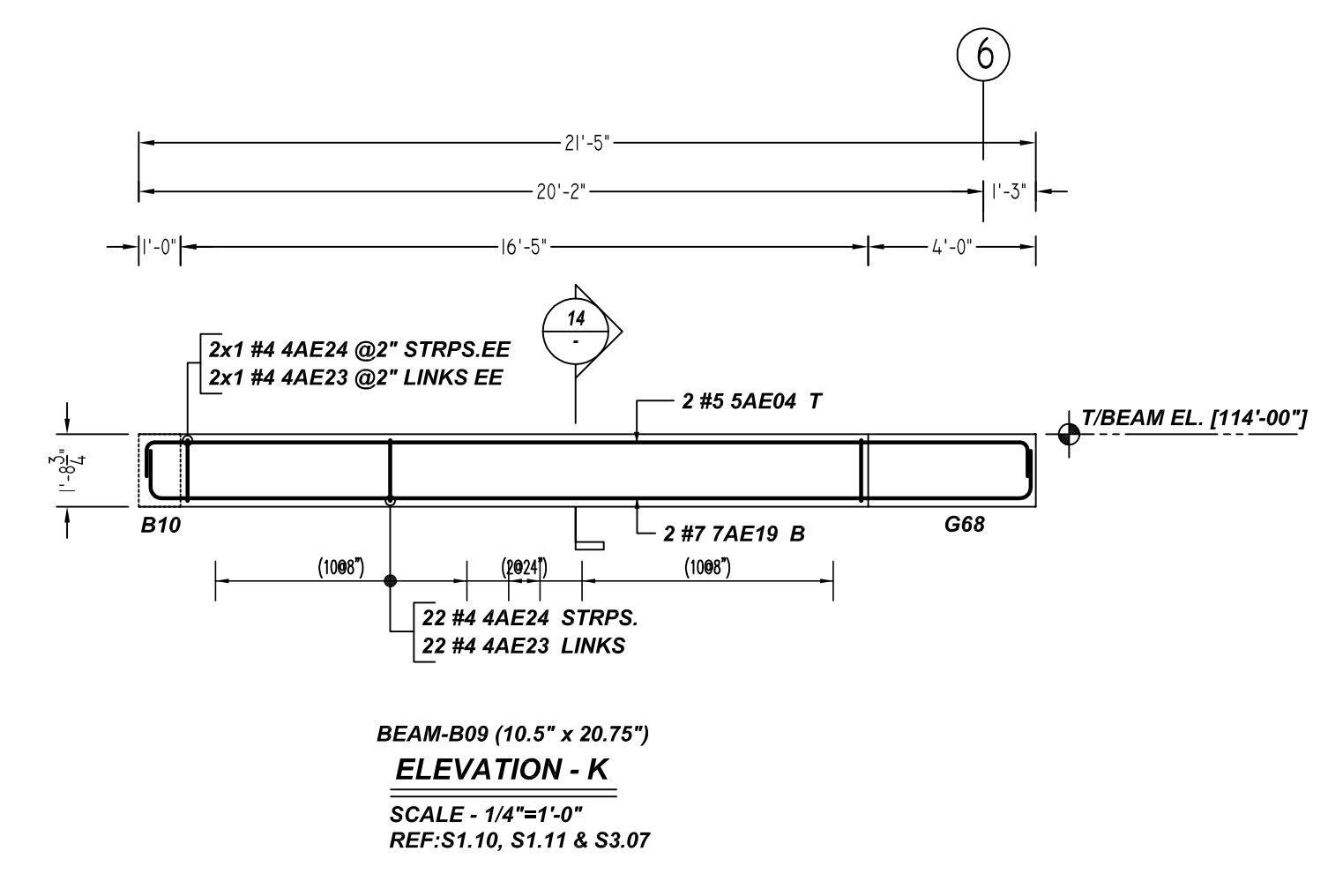
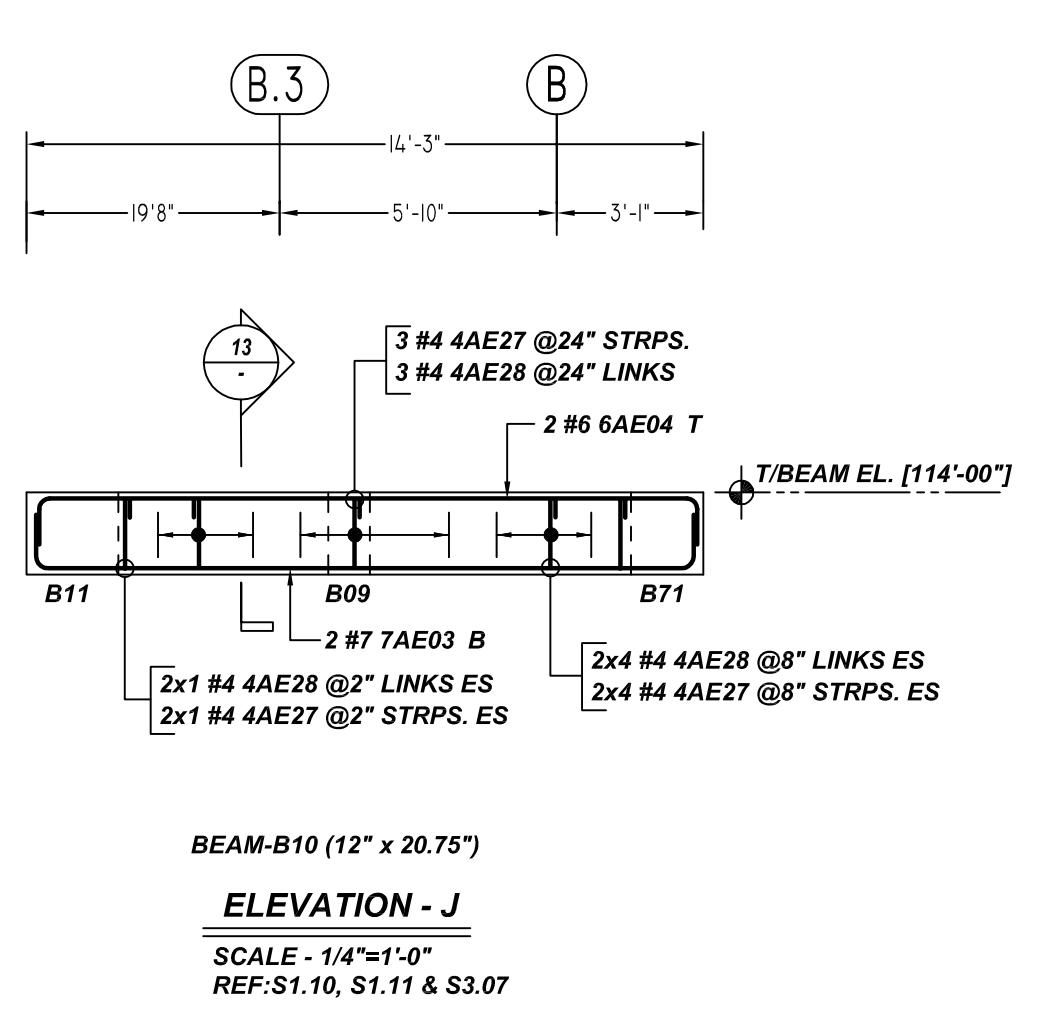
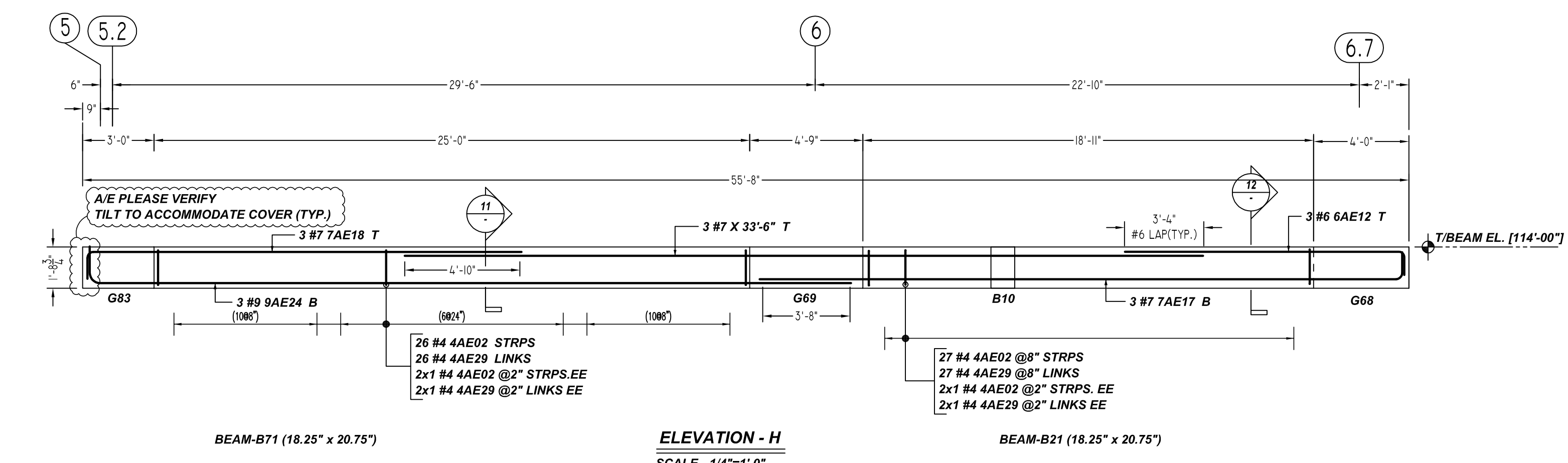
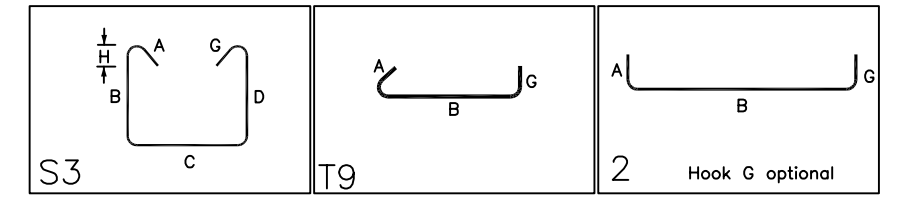
ALL BARS IN THIS DRAWING
ASTM A615 GRADE 60
BLACK UNCOATED



THE PLACING DRAWING IS D'AMBRA'S INTERPRETATION OF THE CONTRACT DRAWINGS. IT IS NOT INTENDED AS A STANDALONE DOCUMENT AND MUST ALWAYS BE USED IN CONJUNCTION WITH THE CONTRACT DRAWINGS.				SHEET TITLE: OFFICE BUILDING MEZZANINE FLOOR BEAM (POUR#1) REINFORCEMENT DETAILS	
				PROJECT: GRANITE PARK VI	
				LOCATION: PLANO, TEXAS	
ISS.	BY.	DATE	DESCRIPTION	CUSTOMER: AUSTIN COMMERCIAL	
0	BCS	12/23/21	FOR APPROVAL	ENGINEER: L.A FUESS PARTNERS	
				DETAILER:	JOB #
				BCS	21022
					SHEET #
					R22.002



Bar Mark		Qty	Size	Bar Length	Type	X	Y	Z	BENDING DETAILS											
X	Y	Z	X	Y	Z	X	Y	Z	X	Y	Z	X	Y	Z	X	Y	Z			
4AE02	57	#4	4'-11"	S3	0'-4"	1'-5"	1'-3"	1'-5"				0'-4"	0'-3"							
4AE05	15	#4	5'-4"	S3	0'-4"	1'-4"	1'-10"	1'-4"				0'-4"	0'-3"							
4AE06	20	#4	3'-5"	TB	0'-4"	0'-8"	0'-8"					0'-4"								
4AE19	20	#4	4'-5"	TB	0'-4"	0'-8"	0'-8"					0'-4"								
4AE23	24	#4	1'-4"	TB	0'-4"	0'-7"	0'-7"					0'-4"								
4AE24	24	#4	4'-4"	S3	0'-4"	1'-5"	0'-7"	1'-5"				0'-4"	0'-3"							
4AE25	24	#4	5'-7"	S3	0'-4"	1'-4"	2'-0"	1'-4"				0'-4"	0'-3"							
4AE26	40	#4	6'-2"	S3	0'-4"	1'-4"	2'-8"	1'-4"				0'-4"	0'-3"							
4AE27	13	#4	4'-5"	S3	0'-4"	1'-5"	0'-8"	1'-5"				0'-4"	0'-3"							
4AE29	13	#4	1'-4"	TB	0'-4"	0'-8"	0'-8"					0'-4"								
4AE29	57	#4	2'-9"	TB	0'-4"	1'-3"	1'-3"					0'-4"								
4AE73	13	#4	2'-7"	TB	0'-4"	1'-10"	1'-10"					0'-4"								
8AE04	2	#6	22'-9"	2	0'-10"	21'-1"		0'-10"				1'-0"								
8AE04	2	#6	15'-11"	2	1'-0"	13'-11"		1'-0"				1'-0"								
8AE12	3	#6	12'-9"	2	1'-0"	11'-9"		1'-0"				1'-2"								
7AE17	3	#7	28'-2"	2	1'-2"	13'-11"		1'-2"				1'-2"								
7AE18	3	#7	19'-5"	2	1'-2"	18'-3"		1'-2"				1'-2"								
7AE19	2	#7	23'-5"	2	1'-2"	21'-1"		1'-2"				1'-2"								
7AE21	4	#7	34'-7"	2	1'-2"	32'-3"		1'-2"				1'-2"								
8AE03	8	#8	20'-8"	2	1'-4"	19'-4"		1'-4"				1'-4"								
8AE04	2	#8	22'-9"	2	1'-4"	19'-4"		1'-4"				1'-4"								
8AE05	8	#8	15'-7"	2	1'-4"	15'-11"		1'-4"				1'-4"								
8AE06	8	#8	17'-3"	2	1'-4"	15'-11"		1'-4"				1'-4"								
8AE21	4	#8	34'-11"	2	1'-4"	32'-3"		1'-4"				1'-4"								
8AE24	3	#8	33'-7"	2	1'-7"	32'-0"		1'-7"				1'-4"								



ACCESSORIES DETAILS					
S. NO	ELEMENT	DESCRIPTION	PCS	LFT	REMARK
1	BEAM	2" HT BOLSTER @ 4'-0" C/C	45	170	FOR BEAM SUPPORT (@ BOTTOM)

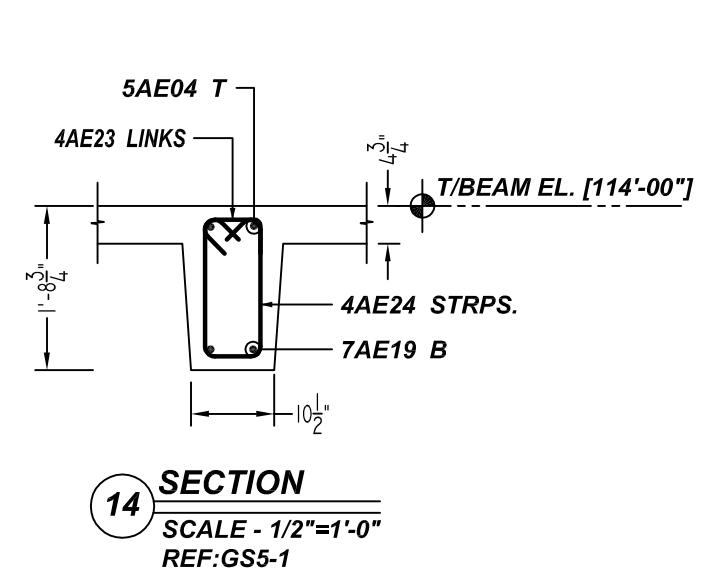
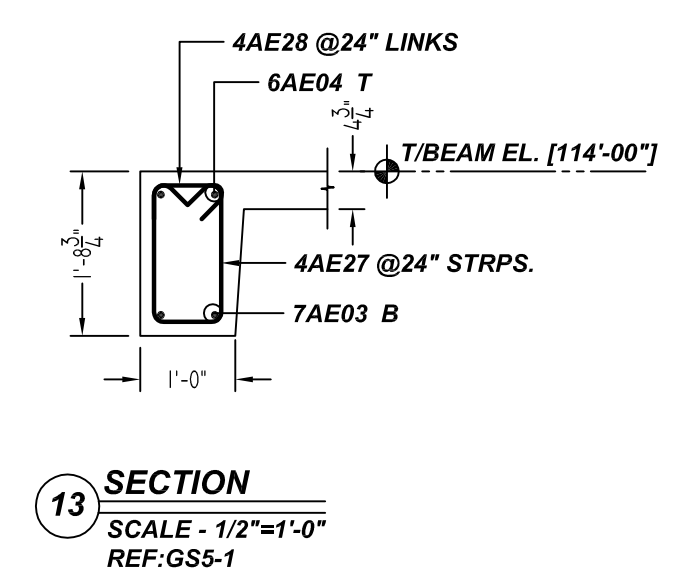
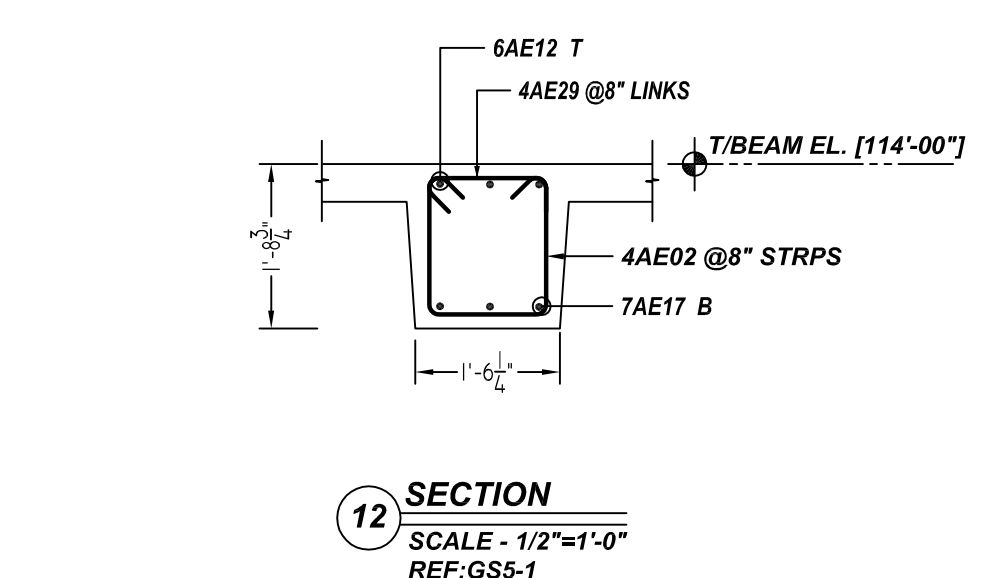
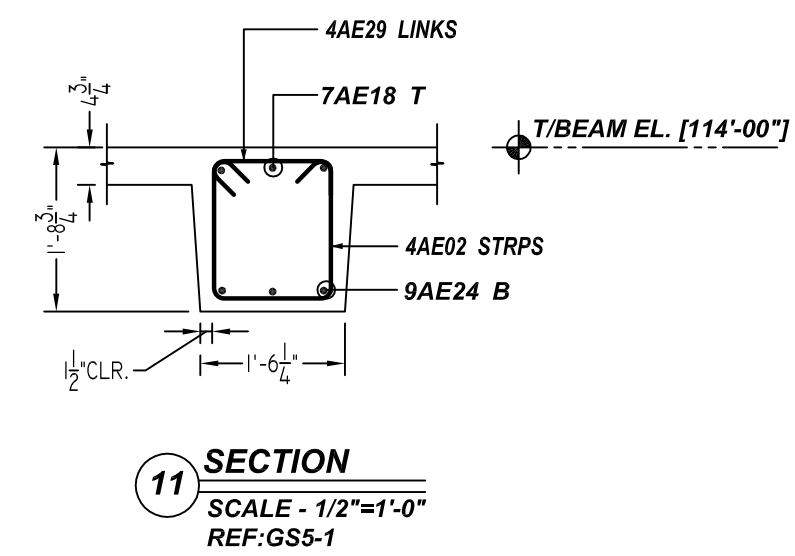
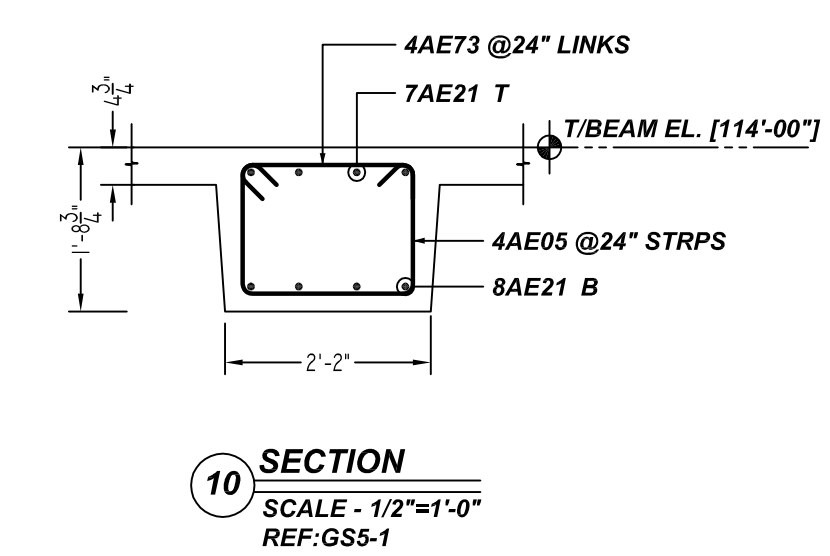
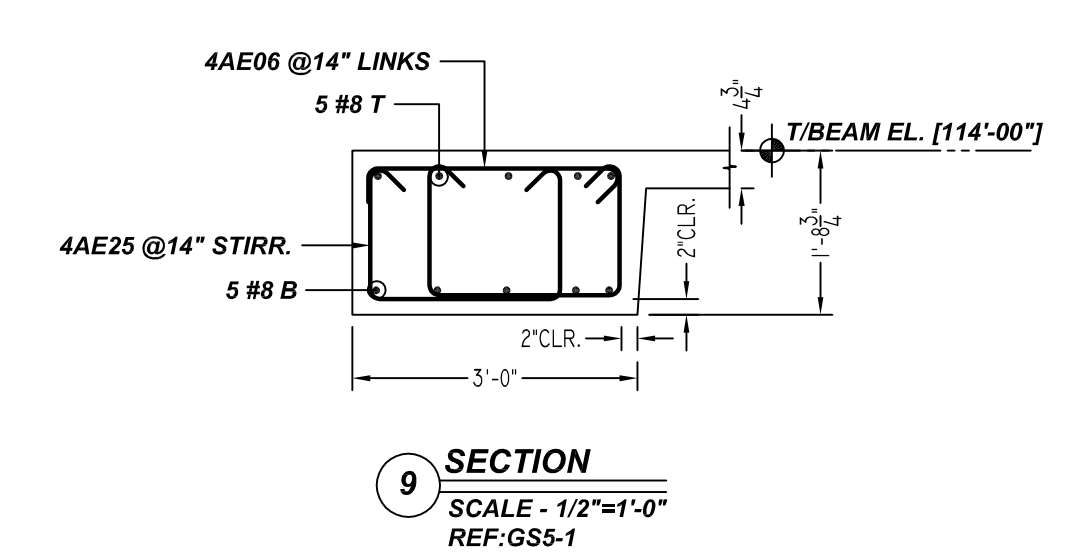
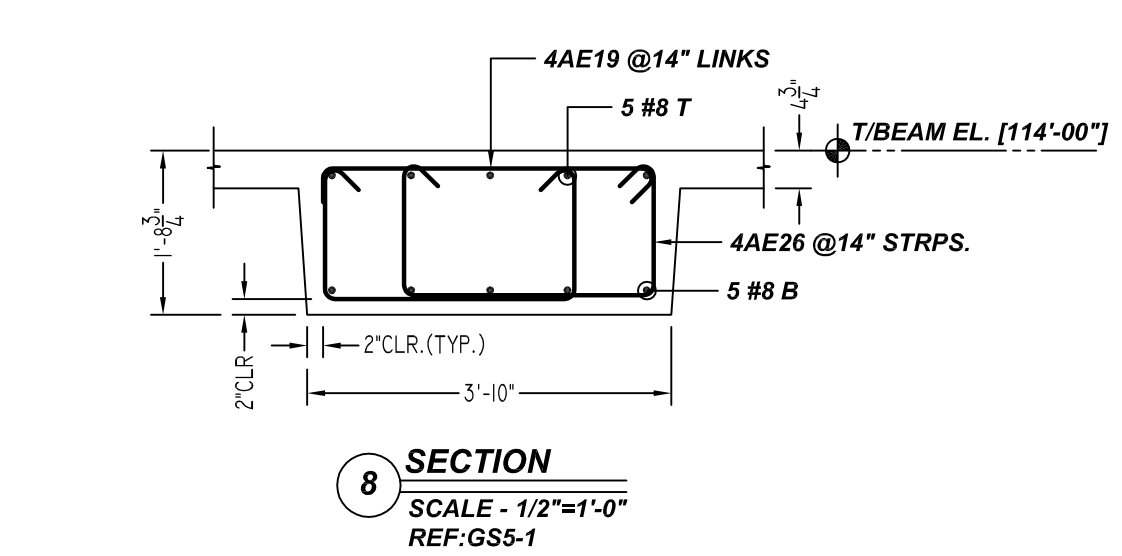
TYPICAL REINFORCING BAR CLEARANCE TABLE	
LOCATION	MIN. COVER
ALL EXTERIOR BEAM	2" CLR
ALL INTERIOR BEAM	1 1/2" CLR

BEAMS & JOIST

SIZE	LAP SCHEDULE	
	6000 PSI	6000 PSI
	TOP	BOTTOM
#3	20"	16"
#4	26"	20"
#5	33"	25"
#6	40"	31"
#7	58"	44"
#8	66"	51"
#9	74"	63"
#10	83"	70"
#11	93"	78"

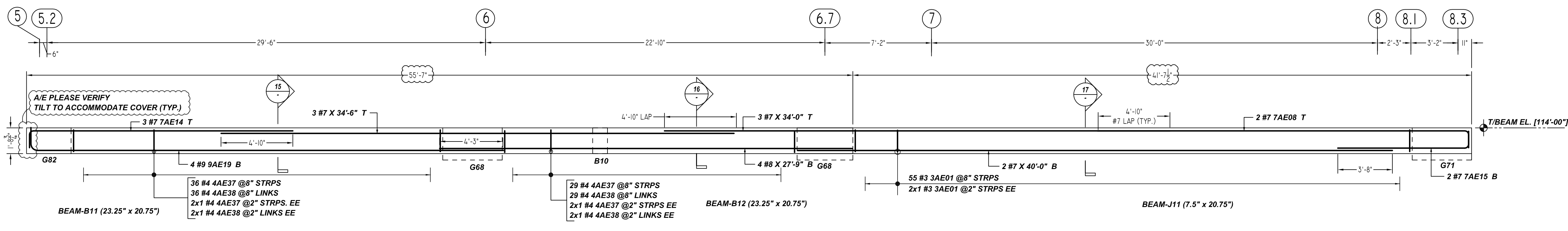
NOTE:
1. A/E PLEASE VERIFY THE ALL BEAM BAR ARRANGEMENTS
2. FIELD BEND AS REQUIRED AT ARC BEAM LOCATIONS

ALL BARS IN THIS DRAWING
ASTM A615 GRADE 60
BLACK UNCOATED

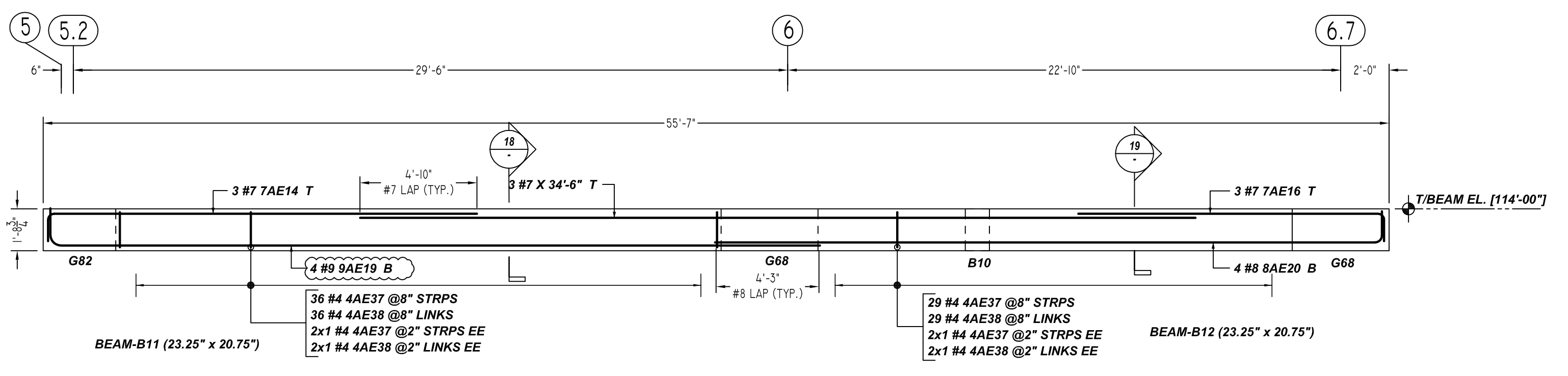


THE PLACING DRAWING IS D'AMBRA'S INTERPRETATION OF THE CONTRACT DRAWINGS. IT IS NOT INTENDED AS A STANDALONE DOCUMENT AND MUST ALWAYS BE USED IN CONJUNCTION WITH THE CONTRACT DRAWINGS.

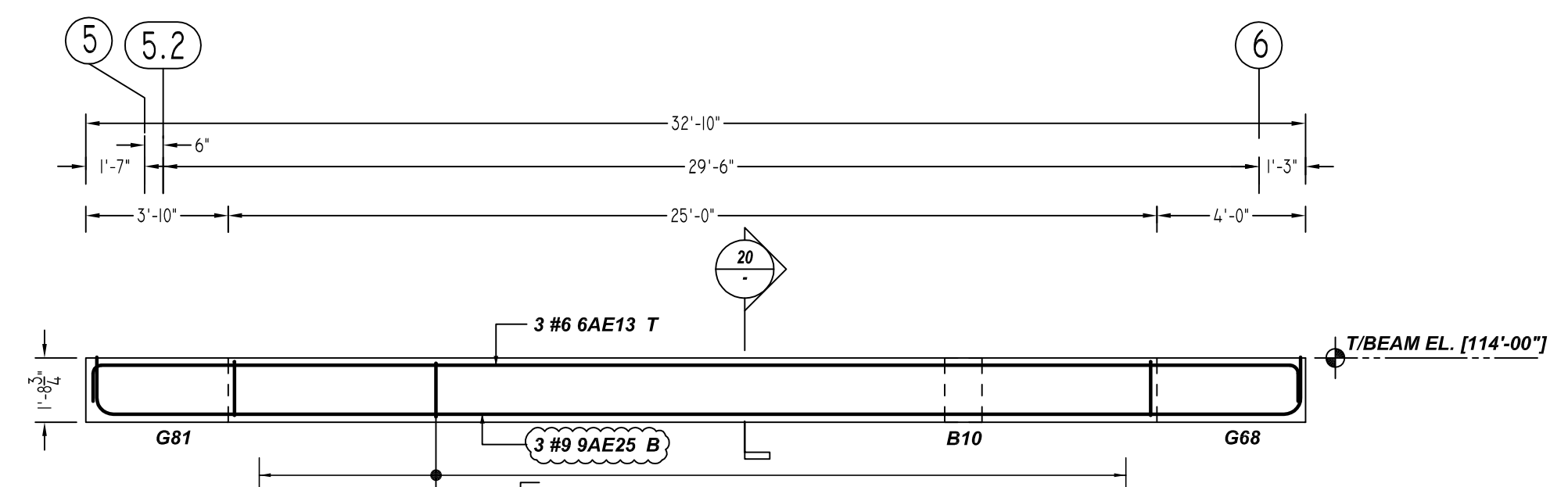
SHEET TITLE:			
OFFICE BUILDING MEZZANINE FLOOR			
BEAM (POUR#1) REINFORCEMENT DETAILS			
PROJECT:			
GRANITE PARK VI			
LOCATION:			
PLANO, TEXAS			
ISS. BY. DATE DESCRIPTION			
0	BCS	12/23/21	FOR APPROVAL
CUSTOMER:			
AUSTIN COMMERCIAL			
ENGINEER:			
L.A FUESS PARTNERS			
DETAILER:		JOB #	
BCS		21022	
SHEET #			
R22.003			



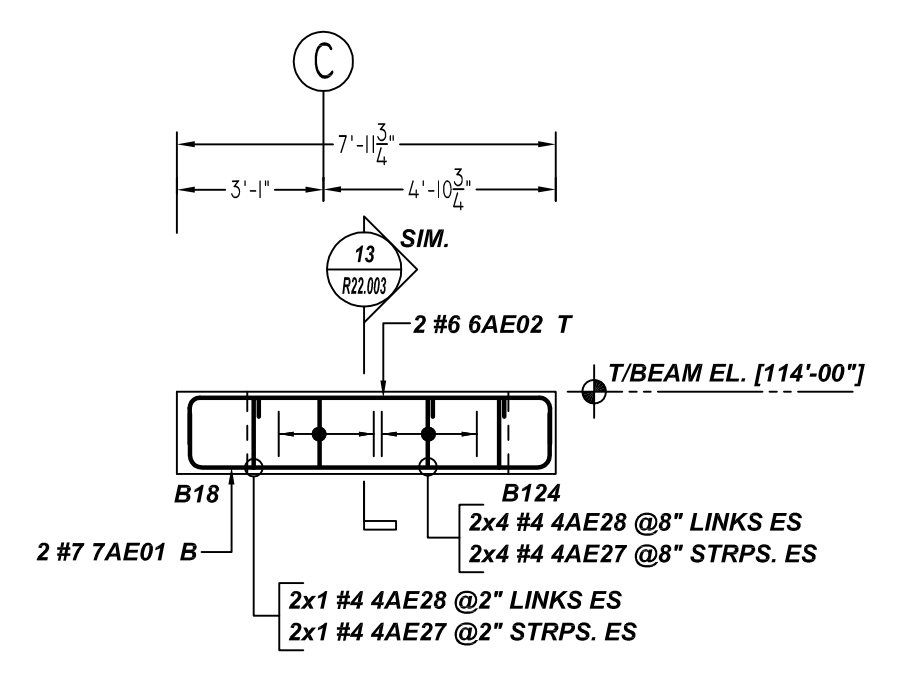
ELEVATION - L
SCALE - 1/4"=1'-0"
REF: S1.10, S1.11 & S3.07



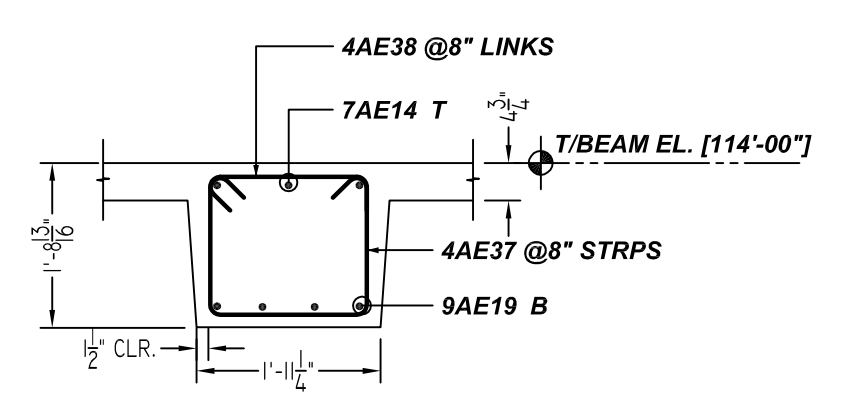
ELEVATION - M
SCALE - 1/4"=1'-0"
REF: S1.10, S1.11 & S3.07



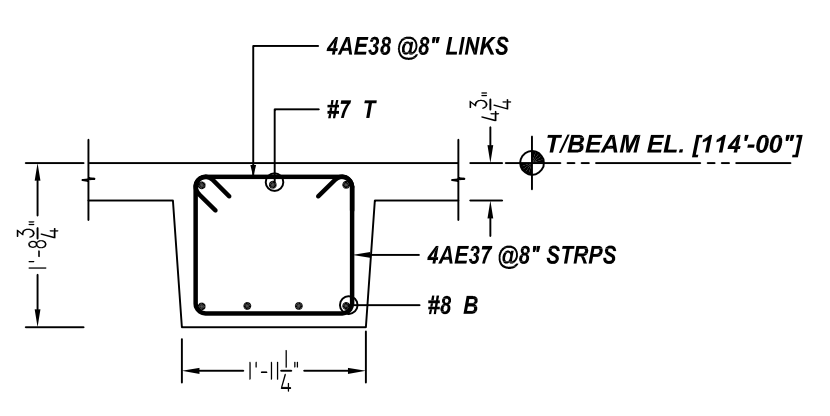
ELEVATION - N
SCALE - 1/4"=1'-0"
REF: S1.10, S1.11 & S3.07



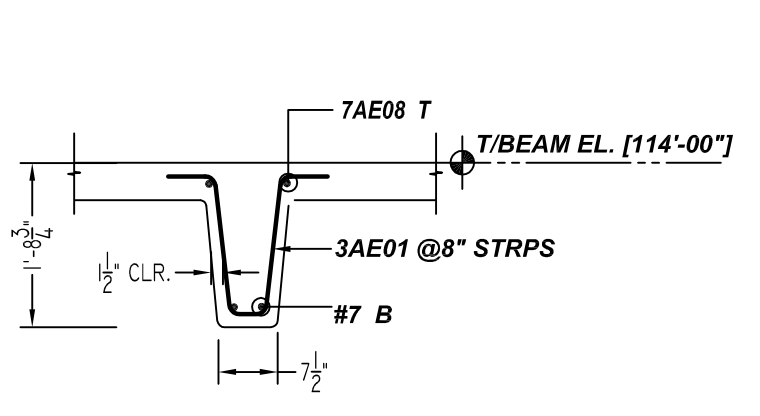
ELEVATION - P
SCALE - 1/4"=1'-0"
REF: S1.10, S1.11 & S3.07



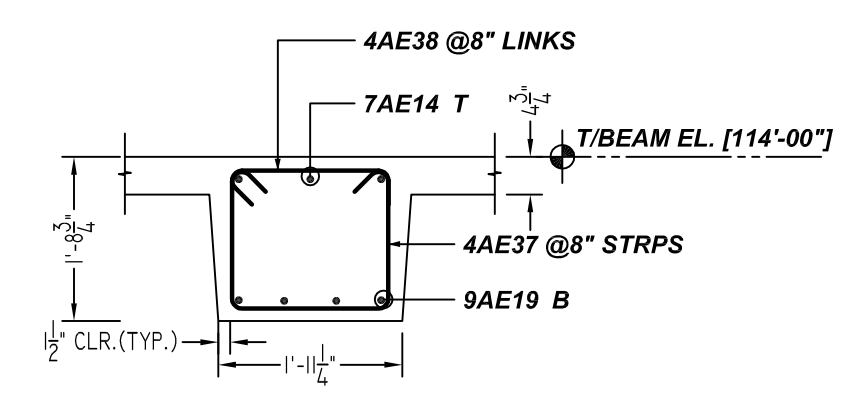
15 SECTION
SCALE - 1/2"=1'-0"
REF: G55-1



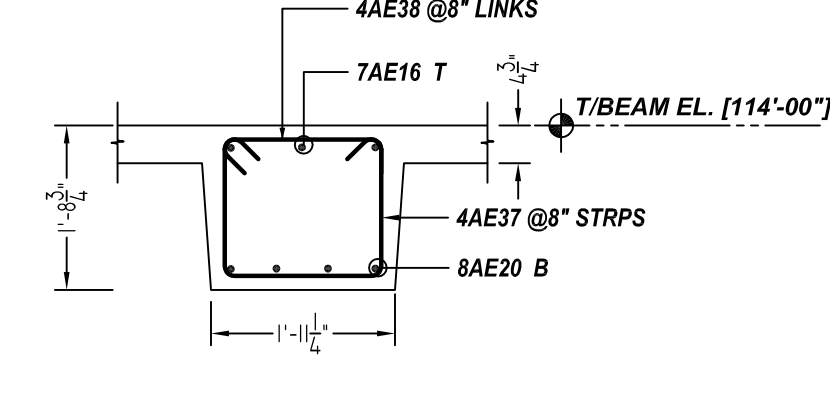
16 SECTION
SCALE - 1/2"=1'-0"
REF: G55-1



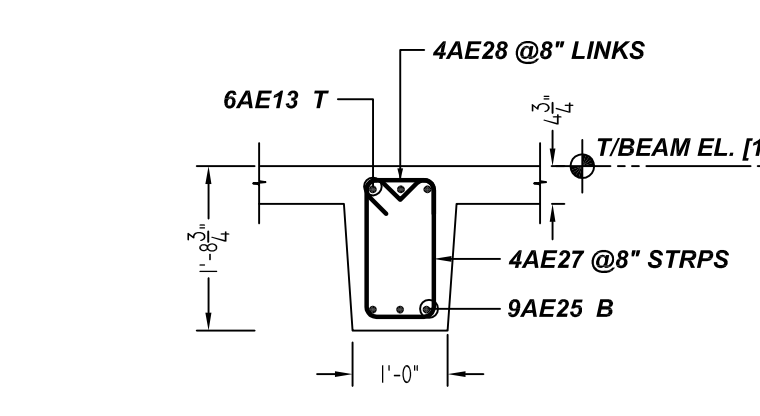
17 SECTION
SCALE - 1/2"=1'-0"
REF: G55-1



18 SECTION
SCALE - 1/2"=1'-0"
REF: G55-1

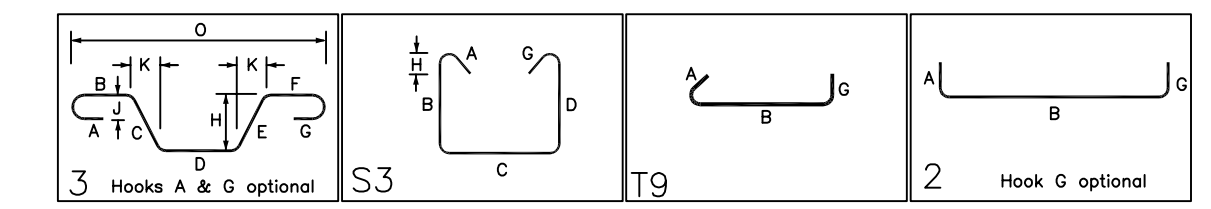


19 SECTION
SCALE - 1/2"=1'-0"
REF: G55-1



20 SECTION
SCALE - 1/2"=1'-0"
REF: G55-1

Bar Mark	Qty	Size	Total Length	Type	X	Y	Z	U	V	W	X	Y	Z	U	V	W
3AE01	51	#3	4'-4 1/2"	S	0'-4 1/2"	0'-0"	0'-0"	1'-5 1/2"	0'-4 1/2"	1'-5 1/2"	0'-0"	0'-0"	0'-0"	0'-4 1/2"	1'-5 1/2"	0'-0"
4AE27	48	#4	4'-5 1/2"	S3	0'-4 1/2"	0'-0"	0'-0"	1'-5 1/2"	0'-4 1/2"	1'-5 1/2"	0'-0"	0'-0"	0'-0"	0'-4 1/2"	0'-5 1/2"	0'-0"
4AE28	48	#4	1'-5 1/2"	T9	0'-4 1/2"	0'-0"	0'-0"	0'-0"	1'-5 1/2"	0'-4 1/2"	0'-0"	0'-0"	0'-0"	0'-4 1/2"	0'-5 1/2"	0'-0"
4AE37	138	#4	5'-4 1/2"	S3	0'-4 1/2"	0'-0"	0'-0"	1'-5 1/2"	0'-4 1/2"	1'-5 1/2"	0'-0"	0'-0"	0'-0"	0'-4 1/2"	0'-5 1/2"	0'-0"
4AE38	138	#4	2'-5 1/2"	T9	0'-4 1/2"	0'-0"	0'-0"	1'-8 1/2"	0'-4 1/2"	1'-8 1/2"	0'-0"	0'-0"	0'-0"	0'-4 1/2"	0'-5 1/2"	0'-0"
6AE02	2	#6	9'-7 1/2"	T	1'-0"	1'-0"	1'-0"	1'-0"	1'-0"	1'-0"	1'-0"	1'-0"	1'-0"	1'-0"	1'-0"	1'-0"
6AE13	3	#6	34'-5 1/2"	T	1'-0"	1'-0"	1'-0"	1'-0"	1'-0"	1'-0"	1'-0"	1'-0"	1'-0"	1'-0"	1'-0"	1'-0"
7AE01	2	#7	9'-11 1/2"	T	1'-2"	1'-2"	1'-2"	1'-2"	1'-2"	1'-2"	1'-2"	1'-2"	1'-2"	1'-2"	1'-2"	1'-2"
7AE08	2	#7	26'-2 1/2"	T	1'-2"	1'-2"	1'-2"	1'-2"	1'-2"	1'-2"	1'-2"	1'-2"	1'-2"	1'-2"	1'-2"	1'-2"
7AE14	6	#7	18'-11 1/2"	T	1'-2"	1'-2"	1'-2"	1'-2"	1'-2"	1'-2"	1'-2"	1'-2"	1'-2"	1'-2"	1'-2"	1'-2"
7AE15	2	#7	10'-0"	T	1'-2"	1'-2"	1'-2"	1'-2"	1'-2"	1'-2"	1'-2"	1'-2"	1'-2"	1'-2"	1'-2"	1'-2"
7AE16	3	#7	13'-10"	T	1'-2"	1'-2"	1'-2"	1'-2"	1'-2"	1'-2"	1'-2"	1'-2"	1'-2"	1'-2"	1'-2"	1'-2"
8AE20	4	#8	28'-11 1/2"	T	1'-4"	1'-4"	1'-4"	1'-4"	1'-4"	1'-4"	1'-4"	1'-4"	1'-4"	1'-4"	1'-4"	1'-4"
9AE19	8	#9	33'-5 1/2"	T	1'-7"	1'-7"	1'-7"	1'-7"	1'-7"	1'-7"	1'-7"	1'-7"	1'-7"	1'-7"	1'-7"	1'-7"
9AE25	3	#9	35'-5 1/2"	T	1'-7"	1'-7"	1'-7"	1'-7"	1'-7"	1'-7"	1'-7"	1'-7"	1'-7"	1'-7"	1'-7"	1'-7"



ACCESSORIES DETAILS					
S. NO	ELEMENT	DESCRIPTION	PCS	LFT	REMARK
1	BEAM	2" HT BOLSTER @4'-0" C/C	50	195	FOR BEAM SUPPORT (@ BOTTOM)

TYPICAL REINFORCING BAR CLEARANCE TABLE	
LOCATION	MIN. COVER
ALL EXTERIOR BEAM	2" CLR
ALL INTERIOR BEAM	1 1/2" CLR

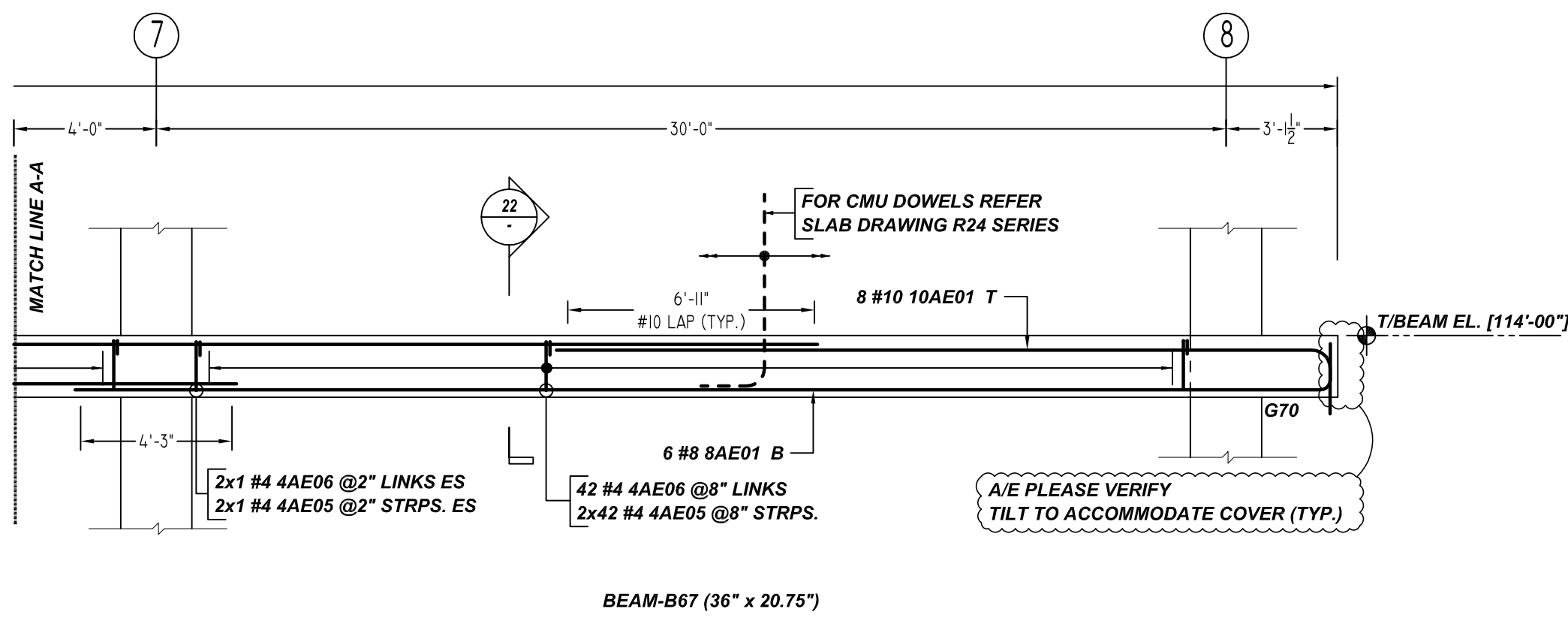
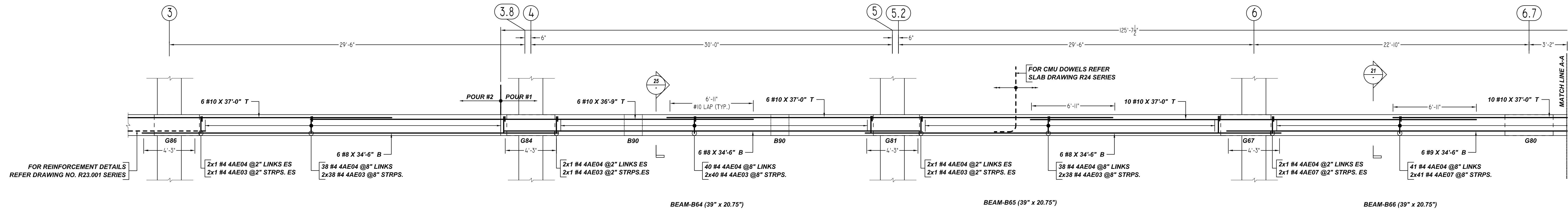
BEAMS & JOIST		
LAP SCHEDULE		
SIZE	6000 PSI	
	TOP	BOTTOM
#3	20"	16"
#4	26"	20"
#5	33"	25"
#6	40"	31"
#7	58"	44"
#8	66"	51"
#9	74"	63"
#10	83"	70"
#11	93"	78"

NOTE:
1. A/E PLEASE VERIFY THE ALL BEAM BAR ARRANGEMENTS
2. FIELD BEND AS REQUIRED AT ARC BEAM LOCATIONS

ALL BARS IN THIS DRAWING
ASTM A615 GRADE 60
BLACK UNCOATED

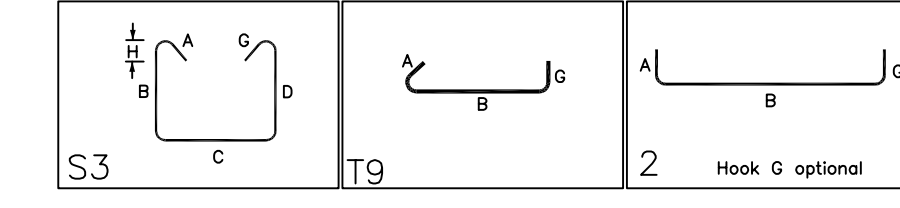
THE PLACING DRAWING IS D'AMBRA'S INTERPRETATION OF THE CONTRACT DRAWINGS. IT IS NOT INTENDED AS A STANDALONE DOCUMENT AND MUST ALWAYS BE USED IN CONJUNCTION WITH THE CONTRACT DRAWINGS.

SHEET TITLE: OFFICE BUILDING MEZZANINE FLOOR BEAM (POUR#1) REINFORCEMENT DETAILS			
PROJECT: GRANITE PARK VI			
LOCATION: PLANO, TEXAS			
ISS.	BY.	DATE	DESCRIPTION
0	BCS	12/23/21	FOR APPROVAL
CUSTOMER: AUSTIN COMMERCIAL			
ENGINEER: L.A FUESS PARTNERS			
DETAILER: BCS		JOB # 21022	SHEET # R22.004



Release Number: R22.005

Bar Mark	Qty	Size	Total Length	Type	X	Y	Z	W	V	U	T	S	R	Q	P	O	N	M	L	K	J	I	H	G	F	E	D	C	B	A
4AE03	244	#4	5'-11"	S3	0'-4"	1'-4"																								
4AE04	165	#4	3'-8"	T9	0'-4"	2'-11"																								
4AE05	88	#4	5'-4"	S3	0'-4"	1'-4"																								
4AE06	44	#4	3'-5"	T9	0'-4"	2'-8"																								
4AE07	88	#4	5'-6"	S3	0'-4"	1'-4"																								
4AE13	36	#4	4'-5"	T9	0'-4"	3'-5"																								
4AE18	94	#4	7'-2"	S3	0'-4"	1'-11"																								
4AE19	47	#4	4'-3"	T9	0'-4"	3'-6"																								
4AE20	72	#4	6'-4"	S3	0'-4"	1'-4"																								
4AE21	22	#4	8'-0"	S3	0'-4"	1'-4"																								
4AE22	11	#4	5'-3"	T9	0'-4"	4'-8"																								
9AE01	8	#9	38'-7"	2	1'-4"	35'-3"																								
9AE07	18	#9	38'-4"	2	1'-7"	36'-9"																								
9AE11	9	#9	14'-10"	2	1'-7"	13'-3"																								
9AE12	9	#9	37'-4"	2	1'-7"	35'-9"																								
9AE13	9	#9	37'-7"	2	1'-7"	36'-0"																								
9AE14	2	#9	13'-10"	2	1'-7"	12'-3"																								
9AE15	2	#9	25'-4"	2	1'-7"	23'-9"																								
10AE01	8	#10	23'-7"	2	1'-10"	21'-9"																								



ACCESSORIES DETAILS

S. NO	ELEMENT	DESCRIPTION	PCS	LFT	REMARK
1	BEAM	2" HT BOLSTER @4'-0" C/C	60	235	FOR BEAM SUPPORT (@ BOTTOM)

BEAMS & JOIST

LAP SCHEDULE

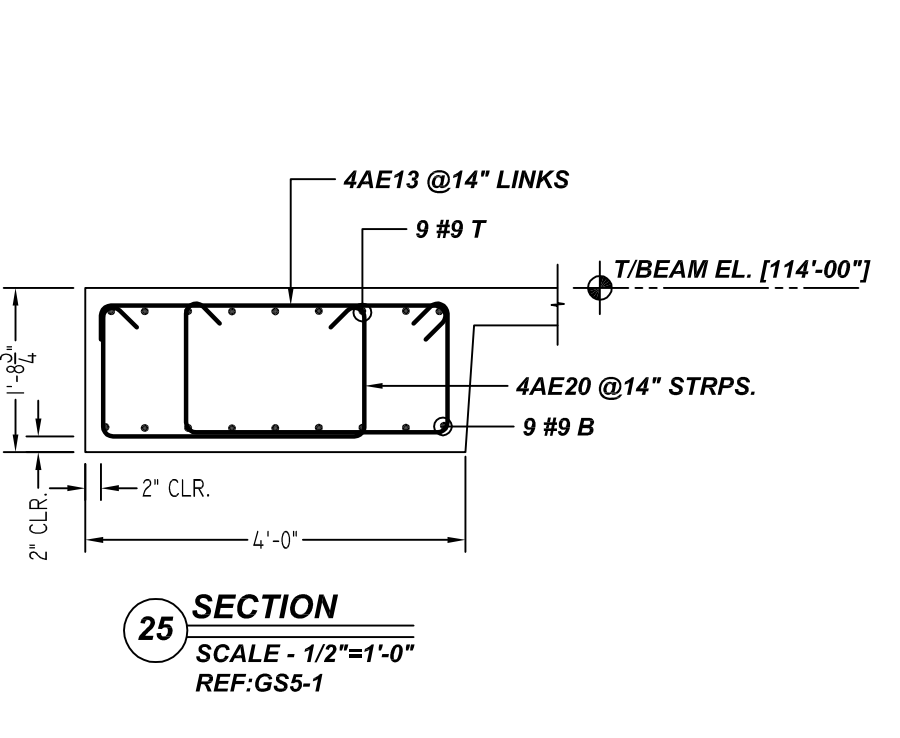
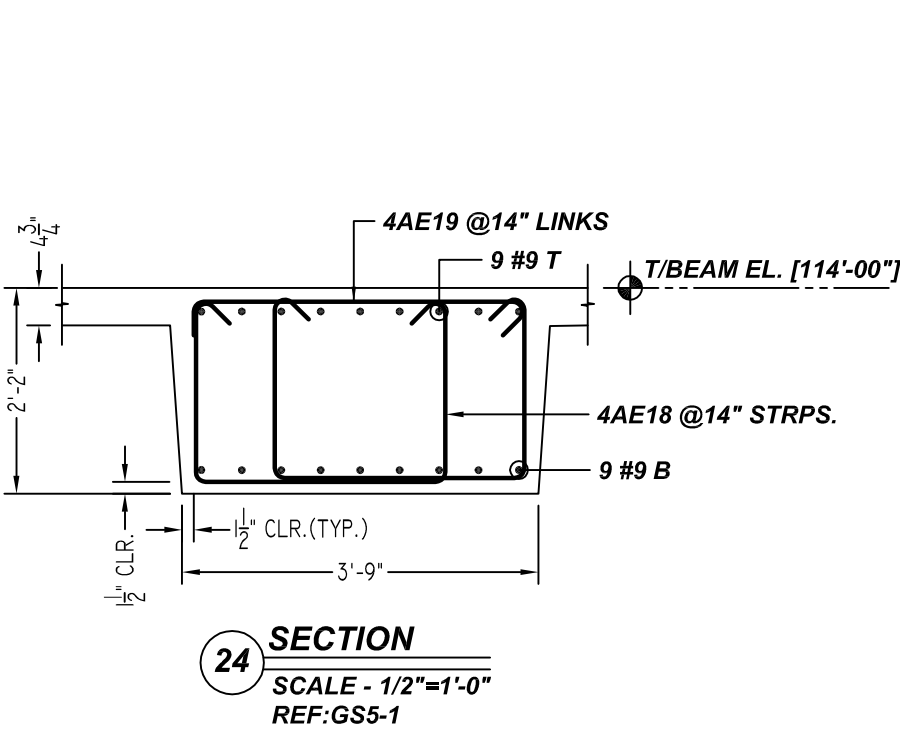
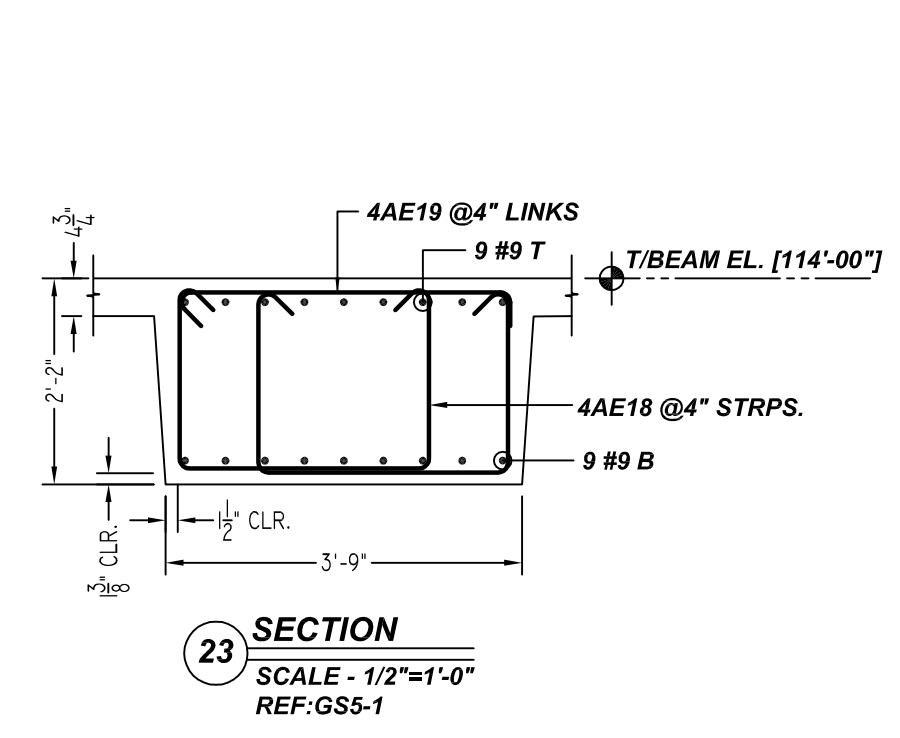
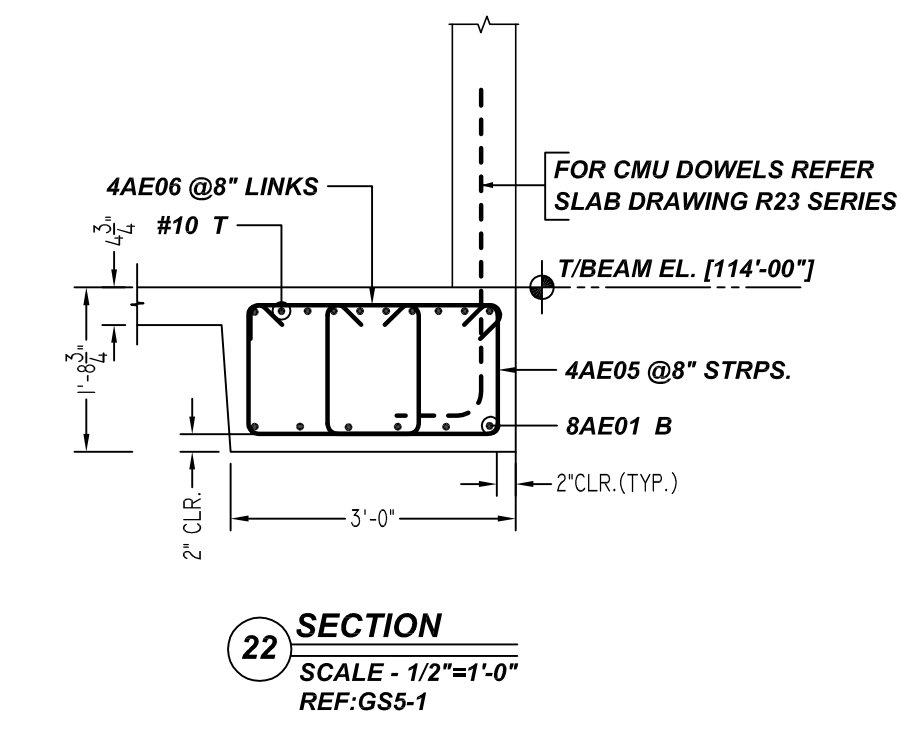
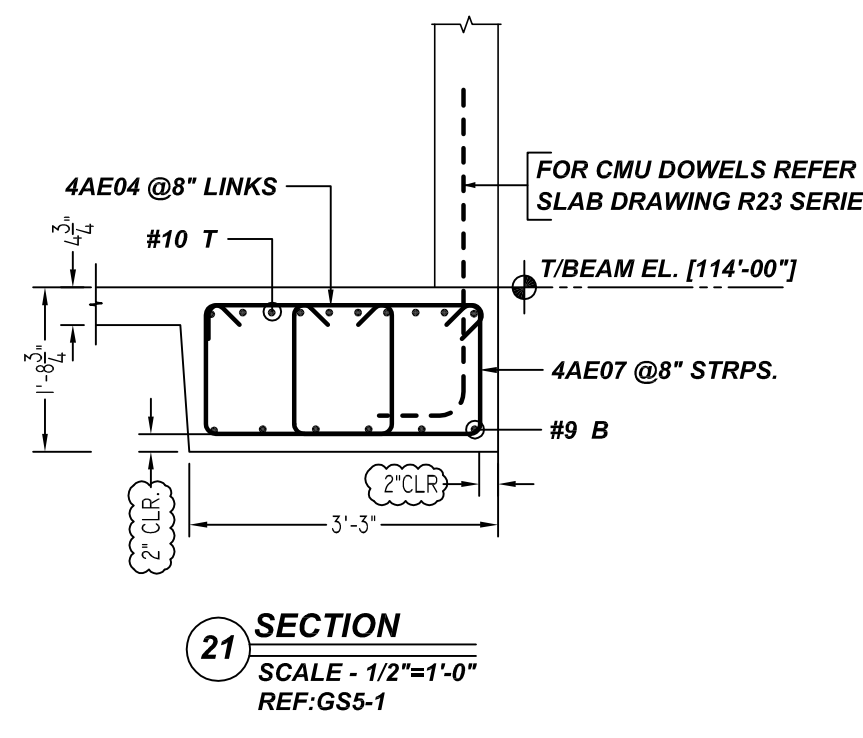
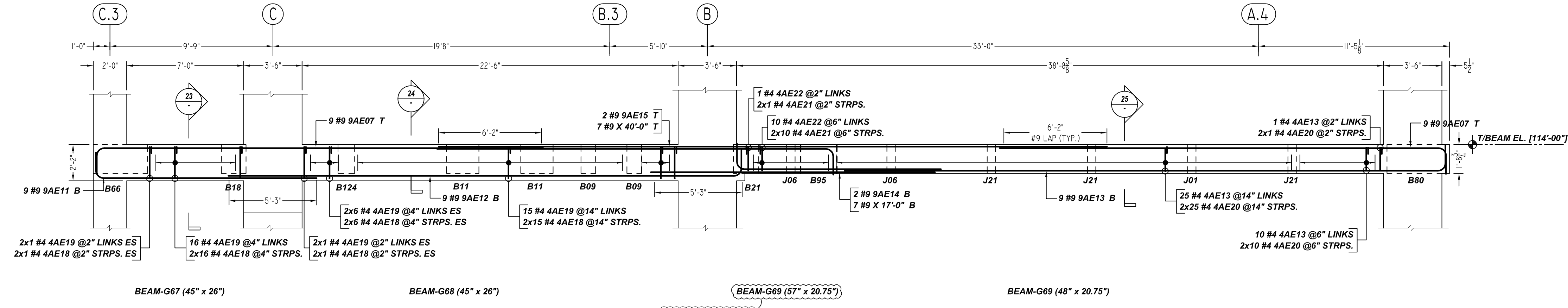
SIZE	6000 PSI	
	TOP	BOTTOM
#3	20"	16"
#4	26"	20"
#5	33"	25"
#6	40"	31"
#7	58"	44"
#8	66"	51"
#9	74"	63"
#10	83"	70"
#11	93"	78"

TYPICAL REINFORCING BAR CLEARANCE TABLE

LOCATION	MIN. COVER
ALL EXTERIOR BEAM	2" CLR
ALL INTERIOR BEAM	1 1/2" CLR

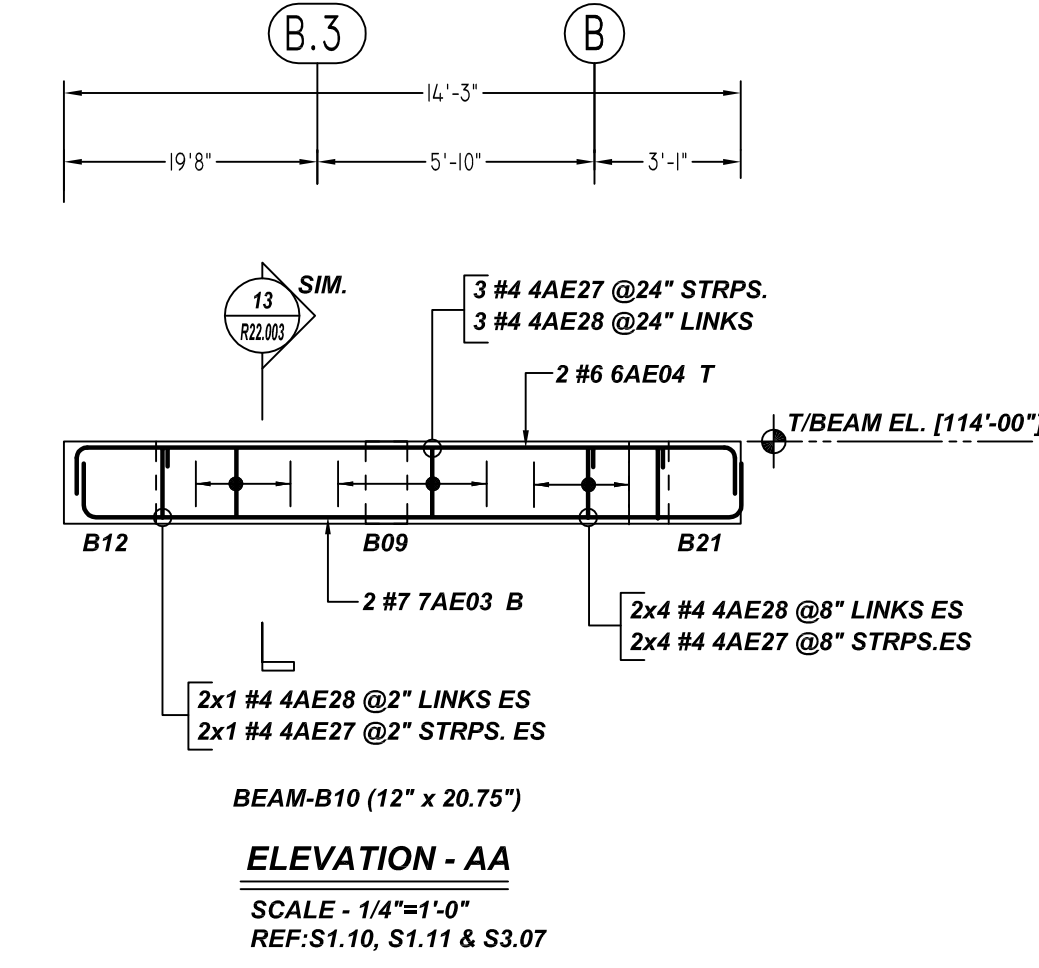
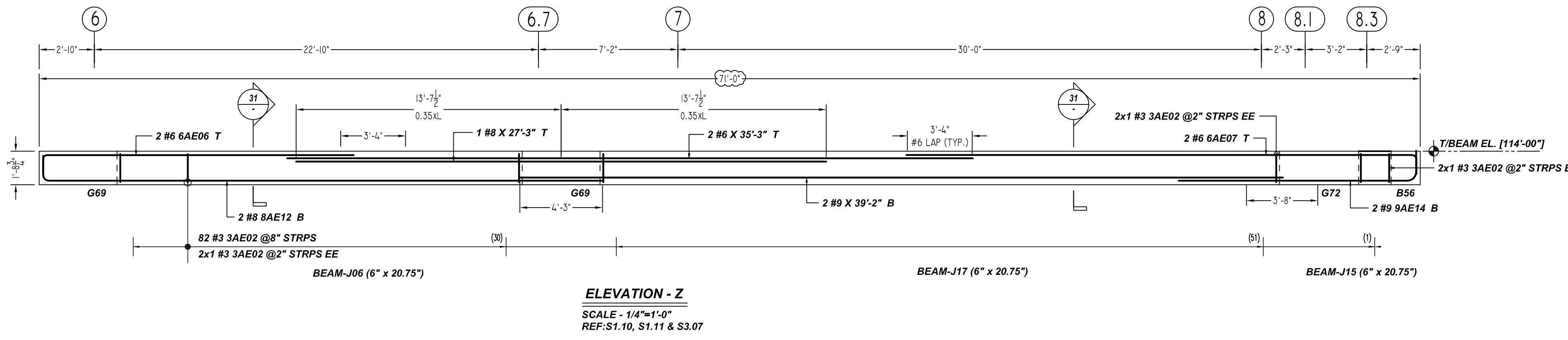
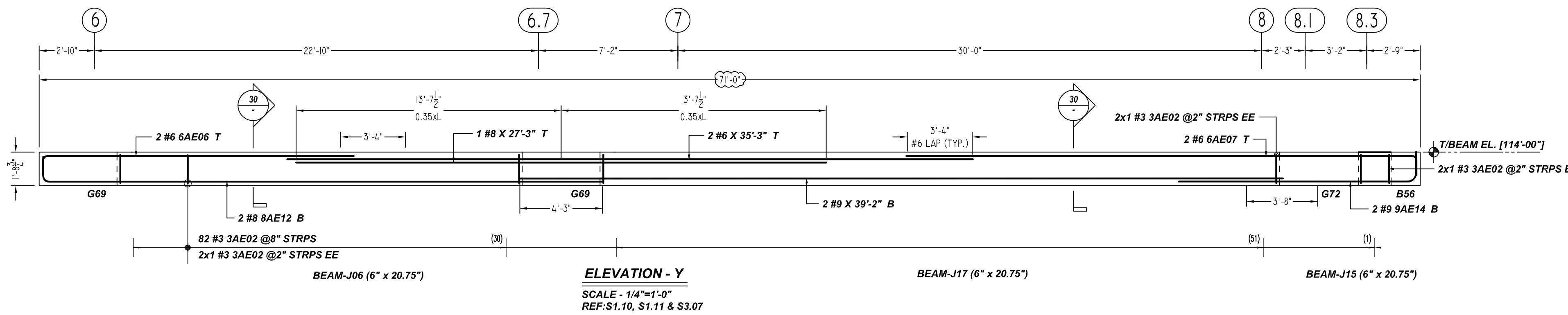
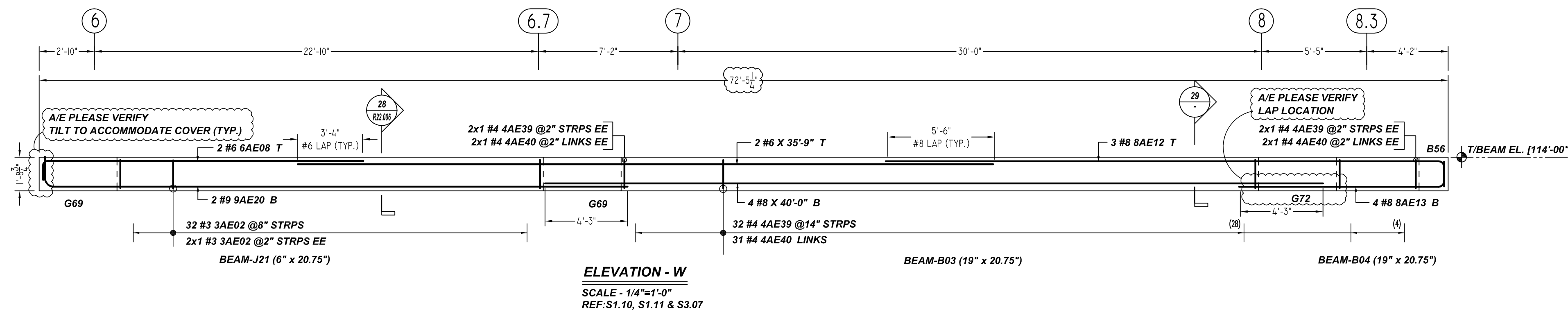
NOTE:
1. A/E PLEASE VERIFY THE ALL BEAM BAR ARRANGEMENTS
2. FIELD BEND AS REQUIRED AT ARC BEAM LOCATIONS

**ALL BARS IN THIS DRAWING
ASTM A615 GRADE 60
BLACK UNCOATED**

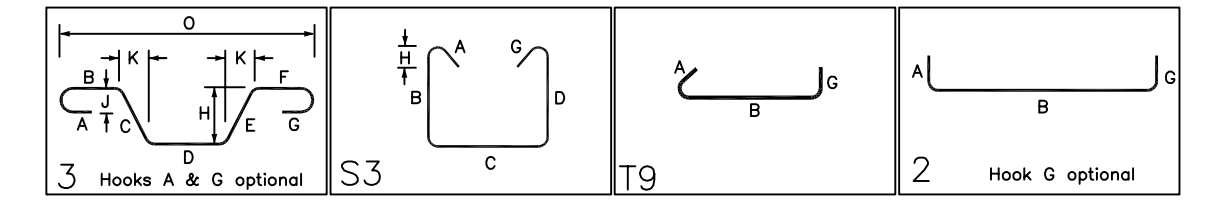


THE PLACING DRAWING IS D'AMBRA'S INTERPRETATION OF THE CONTRACT DRAWINGS. IT IS NOT INTENDED AS A STANDALONE DOCUMENT AND MUST ALWAYS BE USED IN CONJUNCTION WITH THE CONTRACT DRAWINGS.

SHEET TITLE: OFFICE BUILDING MEZZANINE FLOOR BEAM (POUR#1) REINFORCEMENT DETAILS			
PROJECT: GRANITE PARK VI			
LOCATION: PLANO, TEXAS			
ISS.	BY.	DATE	DESCRIPTION
0	BCS	12/23/21	FOR APPROVAL
CUSTOMER: AUSTIN COMMERCIAL			
ENGINEER: L.A FUESS PARTNERS			
DETAILER:	JOB #	SHEET #	
BCS	21022	R22.005	



Bar Mark	Qty	Size	Total Length	Type	X	Y	Z	W	V	U	T	S	R	Q	P	O	N	M	L	K	J	I	H	G	F	E	D	C	B	A						
3AE02	210	#3	4'-2 1/2"	S3																																
4AE27	13	#4	4'-5 1/2"	S3																																
4AE28	13	#4	1'-5 1/2"	19																																
4AE39	36	#4	5'-0 1/2"	S3																																
4AE40	35	#4	2'-1 1/2"	19																																
6AE04	2	#6	15'-11"	2																																
6AE06	4	#6	17'-0"	2																																
6AE07	4	#6	27'-3"	2																																
6AE08	2	#6	17'-5"	2																																
7AE03	2	#7	16'-3"	2																																
8AE12	7	#8	30'-1"	2																																
8AE13	4	#8	11'-11"	2																																
8AE14	4	#8	13'-10"	2																																
9AE20	2	#9	31'-7"	2																																



ACCESSORIES DETAILS					
S. NO	ELEMENT	DESCRIPTION	PCS	LFT	REMARK
1	BEAM	2" HT BOLSTER @4'-0" C/C	60	230	FOR BEAM SUPPORT (@ BOTTOM)

TYPICAL REINFORCING BAR CLEARANCE TABLE	
LOCATION	MIN. COVER
ALL EXTERIOR BEAM	2" CLR
ALL INTERIOR BEAM	1 1/2" CLR

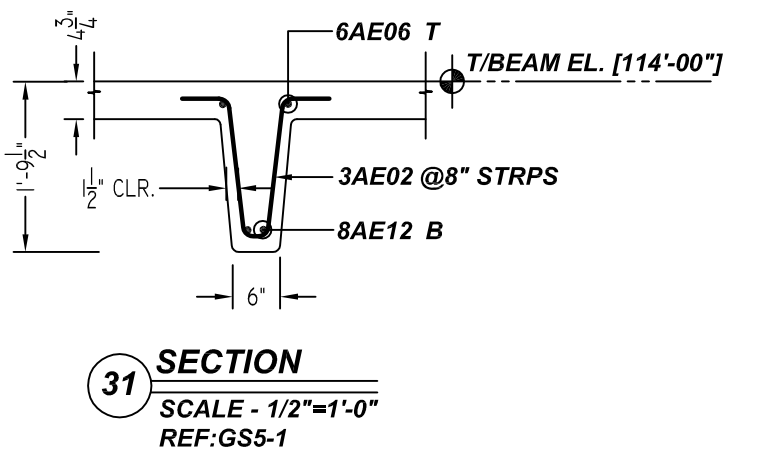
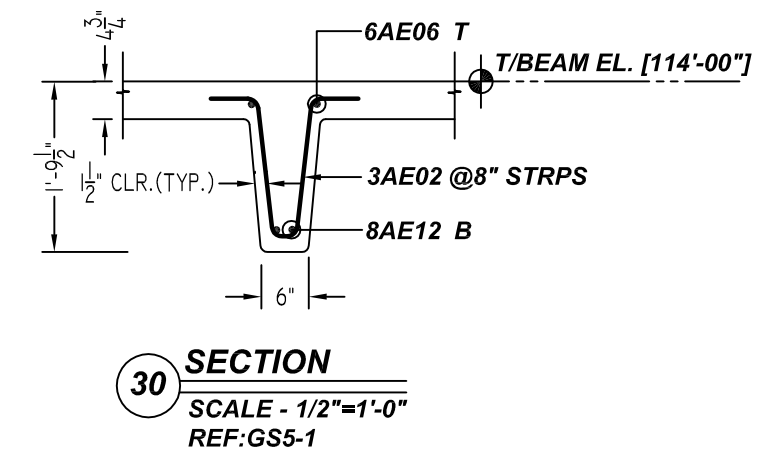
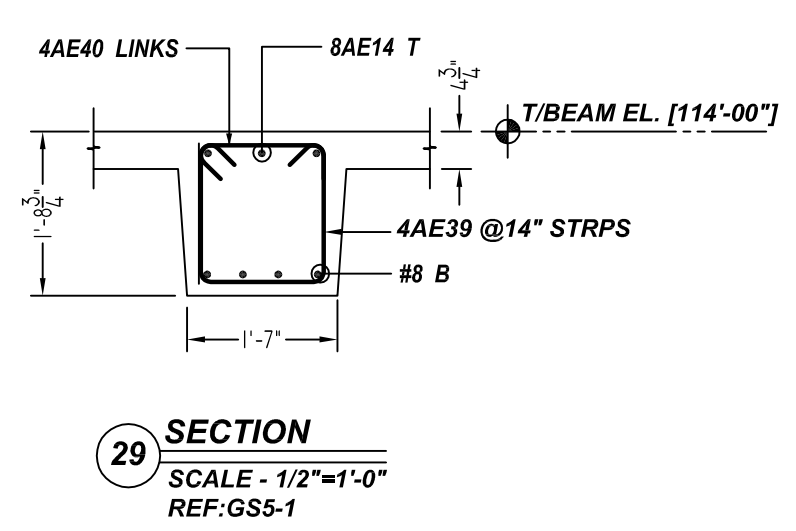
BEAMS & JOIST		
LAP SCHEDULE		
SIZE	6000 PSI	
	TOP	BOTTOM
#3	20"	16"
#4	26"	20"
#5	33"	25"
#6	40"	31"
#7	58"	44"
#8	66"	51"
#9	74"	63"
#10	83"	70"
#11	93"	78"

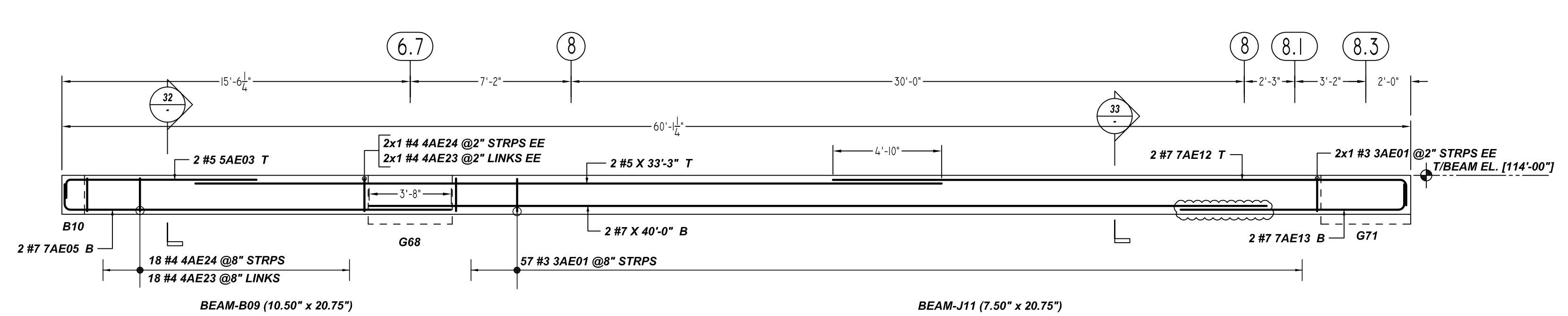
NOTE:
 1. A/E PLEASE VERIFY THE ALL BEAM BAR ARRANGEMENTS
 2. FIELD BEND AS REQUIRED AT ARC BEAM LOCATIONS

ALL BARS IN THIS DRAWING
ASTM A615 GRADE 60
BLACK UNCOATED

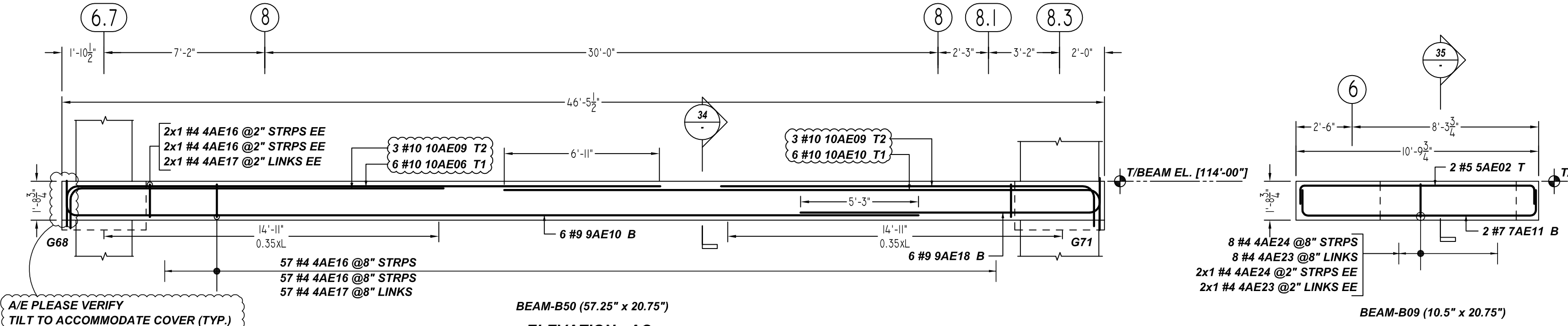
THE PLACING DRAWING IS D'AMBRA'S INTERPRETATION OF THE CONTRACT DRAWINGS. IT IS NOT INTENDED AS A STANDALONE DOCUMENT AND MUST ALWAYS BE USED IN CONJUNCTION WITH THE CONTRACT DRAWINGS.

SHEET TITLE: OFFICE BUILDING MEZZANINE FLOOR BEAM (POUR#1) REINFORCEMENT DETAILS			
PROJECT: GRANITE PARK VI			
LOCATION: PLANO, TEXAS			
ISS.	BY.	DATE	DESCRIPTION
0	BCS	12/23/21	FOR APPROVAL
CUSTOMER: AUSTIN COMMERCIAL			
ENGINEER: L.A FUESS PARTNERS			
DETAILER: BCS		JOB # 21022	SHEET # R22.007



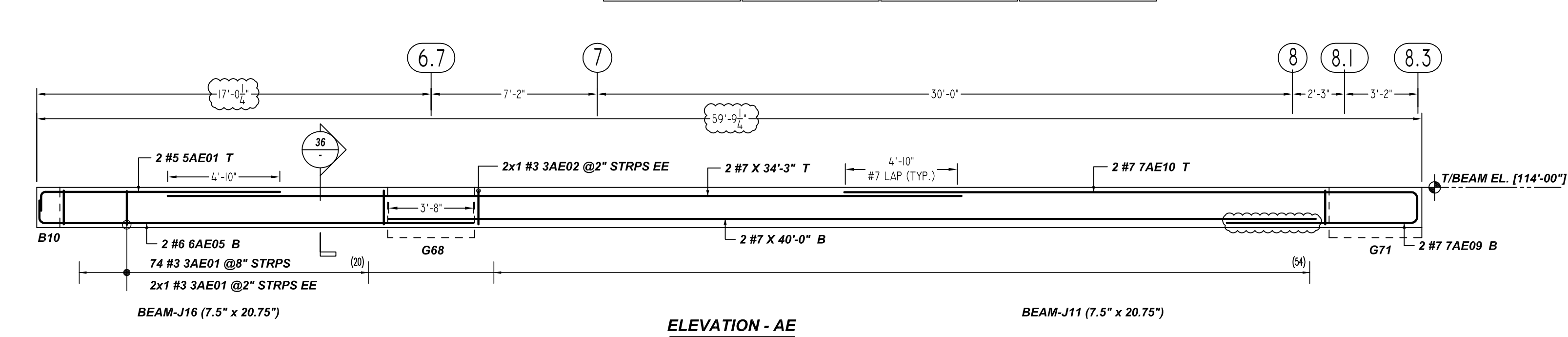


ELEVATION - AB
SCALE - 1/4"=1'-0"
REF:S1.10, S1.11 & S3.07

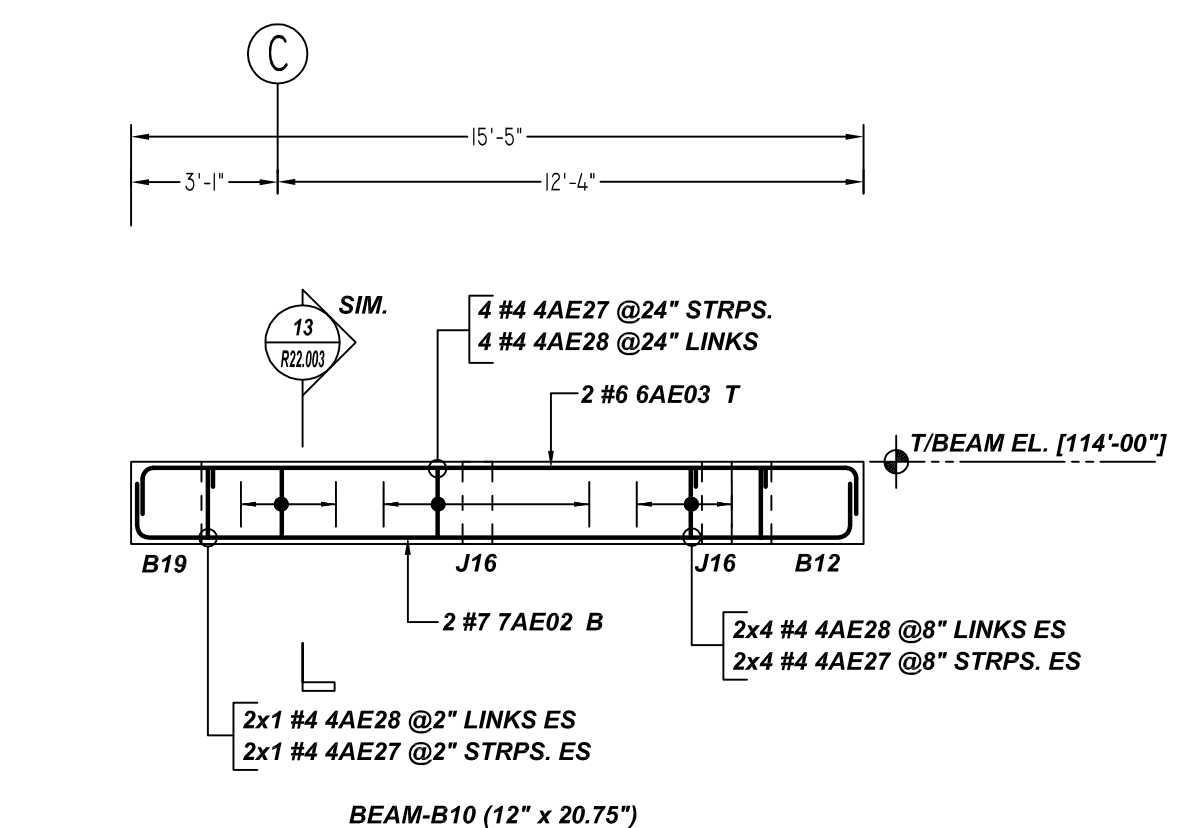


ELEVATION - AC
SCALE - 1/4"=1'-0"
REF:S1.10, S1.11 & S3.07

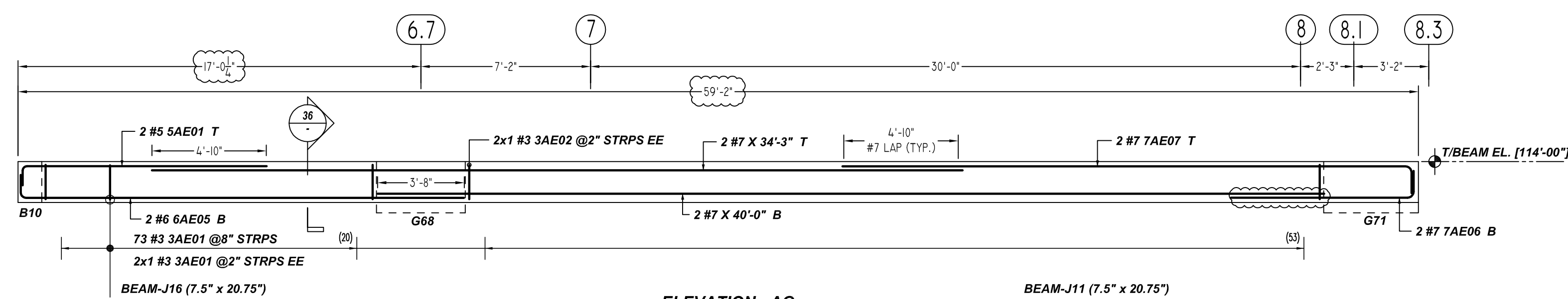
ELEVATION - AD
SCALE - 1/4"=1'-0"
REF:S1.10, S1.11 & S3.07



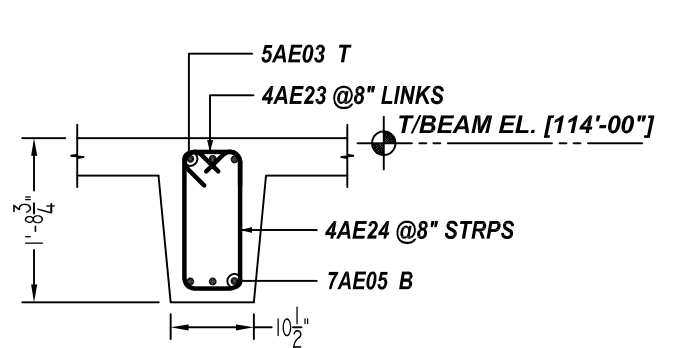
ELEVATION - AE
SCALE - 1/4"=1'-0"
REF:S1.10, S1.11 & S3.07



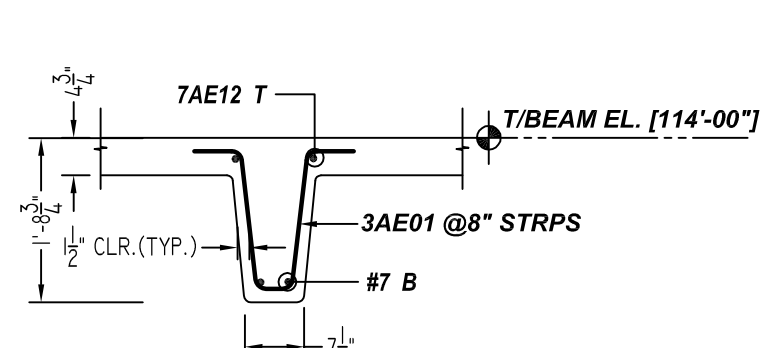
ELEVATION - AF
SCALE - 1/4"=1'-0"
REF:S1.10, S1.11 & S3.07



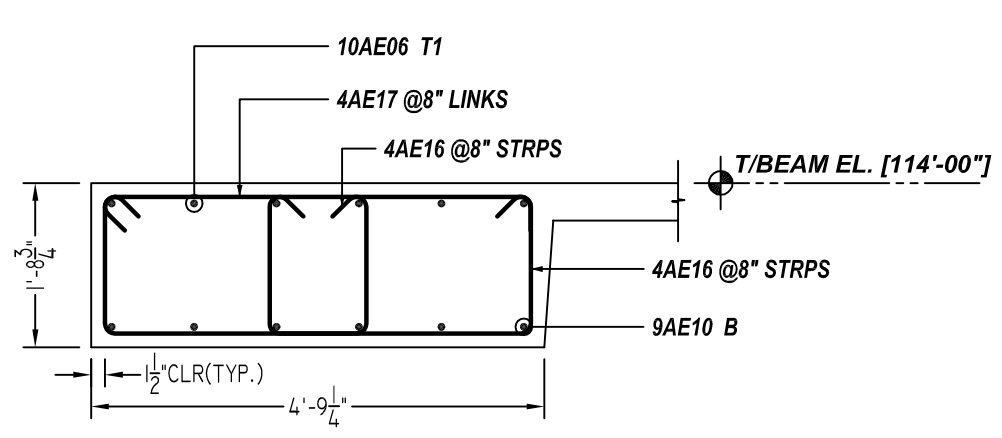
ELEVATION - AG
SCALE - 1/4"=1'-0"
REF:S1.10, S1.11 & S3.07



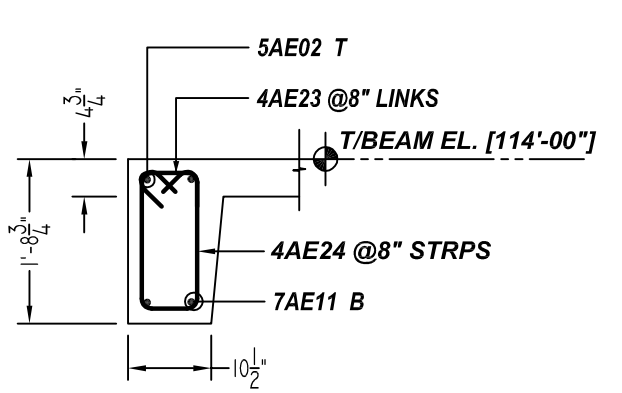
SECTION 32
SCALE - 1/2"=1'-0"
REF:GS-1



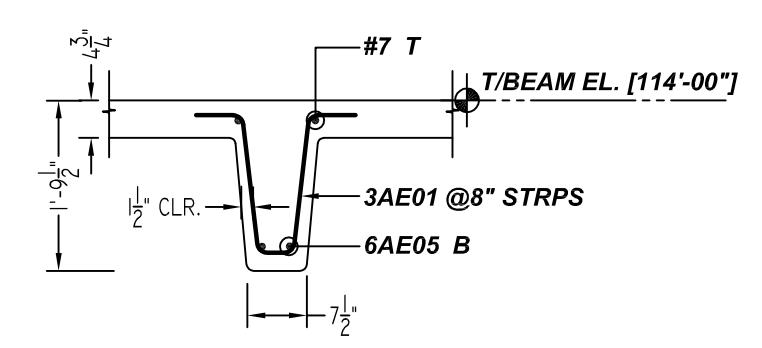
SECTION 33
SCALE - 1/2"=1'-0"
REF:GS-1



SECTION 34
SCALE - 1/2"=1'-0"
REF:GS-1



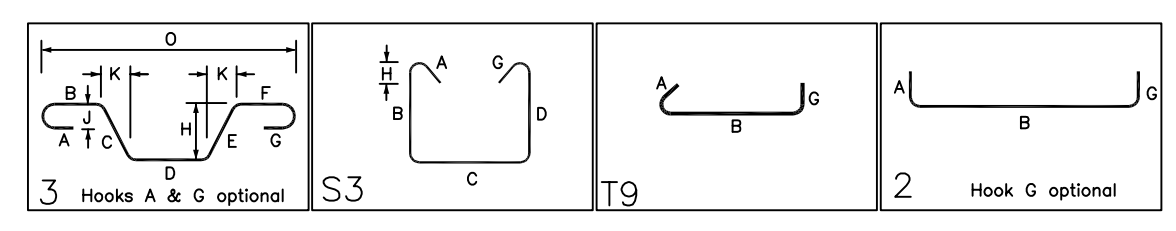
SECTION 35
SCALE - 1/2"=1'-0"
REF:GS-1



SECTION 36
SCALE - 1/2"=1'-0"
REF:GS-1

Release Number: R22.008

Bar Mark	Qty	Size	Total Length	Type	X	Y	Z	BENDING DETAILS	
5AE01	210	#3	4'-4"	3	0'-0"	1'-5"	0'-4"	1'-5"	0'-0"
5AE02	4	#3	4'-2"	3	0'-0"	1'-5"	0'-3"	1'-5"	0'-0"
4AE16	118	#4	6'-8"	S3	0'-4"	1'-5"	2'-9"	1'-5"	0'-3"
4AE17	59	#4	5'-3"	T8	0'-4"	4'-8"			0'-4"
4AE23	38	#4	1'-4"	T9	0'-4"	0'-7"			0'-4"
4AE24	38	#4	4'-4"	S3	0'-4"	1'-5"	0'-7"	1'-5"	0'-3"
4AE27	14	#4	4'-5"	S3	0'-4"	1'-5"	0'-9"	1'-5"	0'-3"
4AE28	14	#4	1'-6"	T9	0'-4"	0'-9"			0'-4"
5AE01	4	#5	11'-2"	2	0'-10"	10'-4"			
5AE02	2	#5	12'-1"	2	0'-10"	10'-5"			0'-10"
5AE03	2	#5	9'-4"	2	0'-10"	8'-8"			
6AE03	2	#6	17'-1"	2	1'-0"	15'-7"			1'-0"
6AE05	4	#6	18'-0"	2	1'-0"	18'-0"			
7AE02	2	#7	17'-5"	2	1'-2"	15'-1"			1'-2"
7AE05	2	#7	18'-5"	2	1'-2"	17'-3"			
7AE06	2	#7	8'-11"	2	1'-2"	7'-9"			
7AE07	2	#7	25'-3"	2	1'-2"	24'-1"			
7AE09	2	#7	9'-5"	2	1'-2"	8'-3"			
7AE10	2	#7	25'-11"	2	1'-2"	24'-9"			
7AE11	2	#7	12'-9"	2	1'-2"	10'-5"			1'-2"
7AE12	2	#7	26'-9"	2	1'-2"	25'-7"			
7AE13	2	#7	11'-2"	2	1'-2"	10'-0"			
9AE10	6	#9	39'-7"	2	1'-7"	38'-0"			
9AE16	6	#9	14'-11"	2	1'-7"	13'-4"			
10AE06	6	#10	28'-4"	2	1'-10"	26'-8"			
10AE09	6	#10	18'-4"	2	1'-10"	16'-8"			
10AE10	6	#10	28'-5"	2	1'-10"	26'-7"			



ACCESSORIES DETAILS

S. NO	ELEMENT	DESCRIPTION	PCS	LFT	REMARK
1	BEAM	2" HT BOLSTER @4'-0" C/C	65	250	FOR BEAM SUPPORT (@ BOTTOM)

TYPICAL REINFORCING BAR CLEARANCE TABLE

LOCATION	MIN. COVER
ALL EXTERIOR BEAM	2" CLR
ALL INTERIOR BEAM	1 1/2" CLR

BEAMS & JOIST LAP SCHEDULE

SIZE	6000 PSI	
	TOP	BOTTOM
#3	20"	16"
#4	26"	20"
#5	33"	25"
#6	40"	31"
#7	58"	44"
#8	66"	51"
#9	74"	63"
#10	83"	70"
#11	93"	78"

NOTE:
1. A/E PLEASE VERIFY THE ALL BEAM BAR ARRANGEMENTS
2. FIELD BEND AS REQUIRED AT ARC BEAM LOCATIONS

**ALL BARS IN THIS DRAWING
ASTM A615 GRADE 60
BLACK UNCOATED**

THE PLACING DRAWING IS D'AMBRA'S INTERPRETATION OF THE CONTRACT DRAWINGS. IT IS NOT INTENDED AS A STANDALONE DOCUMENT AND MUST ALWAYS BE USED IN CONJUNCTION WITH THE CONTRACT DRAWINGS.

SHEET TITLE:
OFFICE BUILDING MEZZANINE FLOOR
BEAM (POUR#1) REINFORCEMENT DETAILS

PROJECT:
GRANITE PARK VI

LOCATION:
PLANO, TEXAS

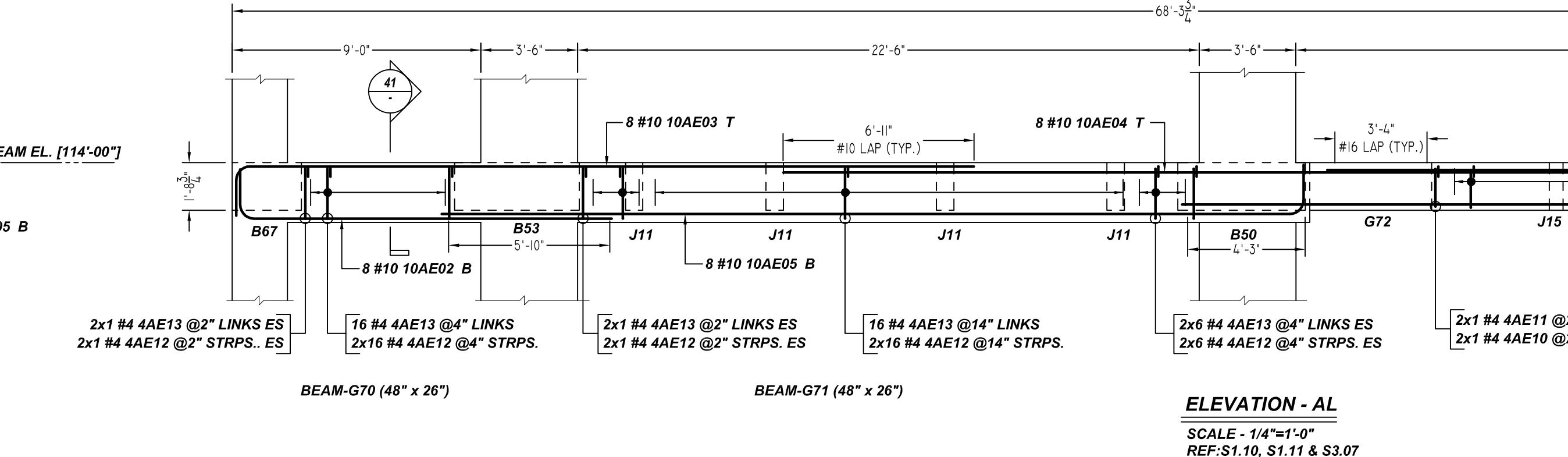
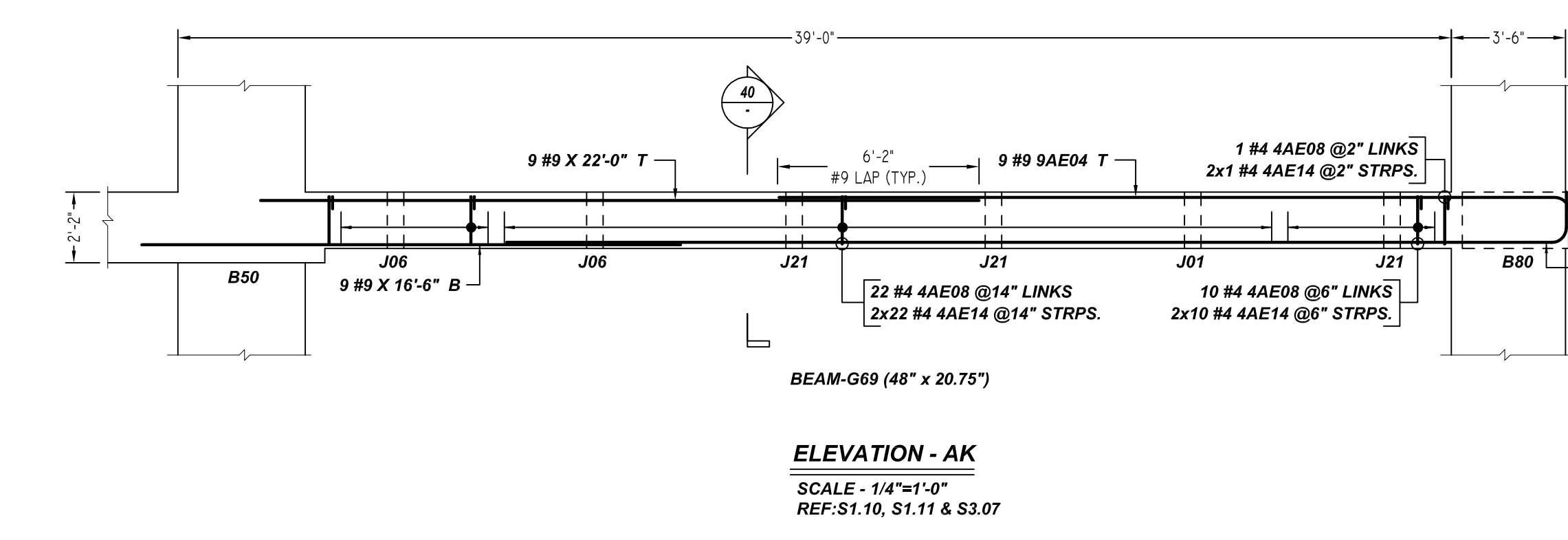
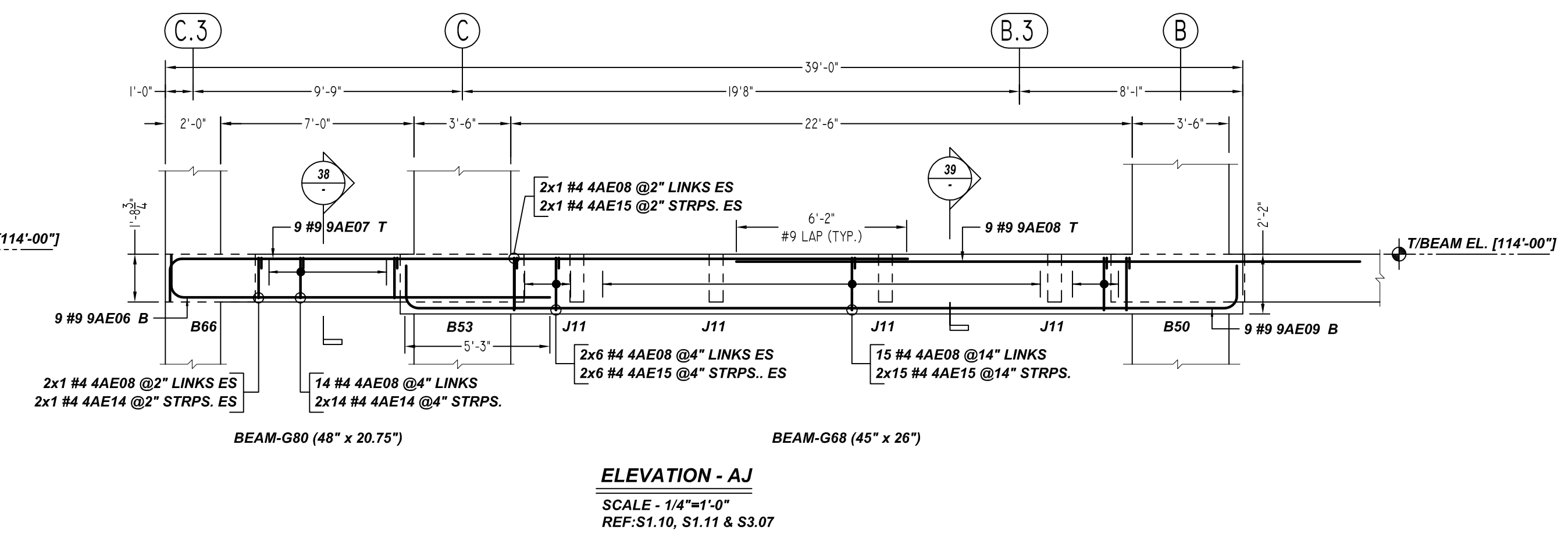
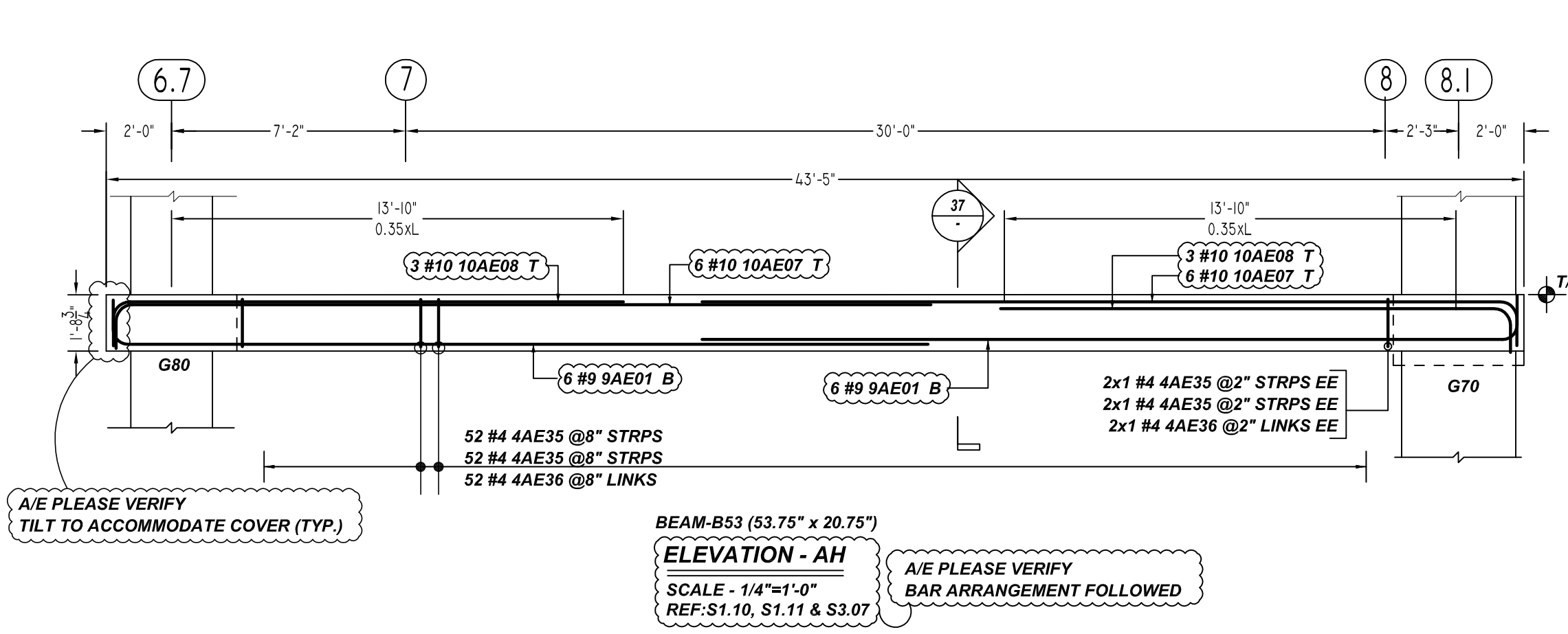
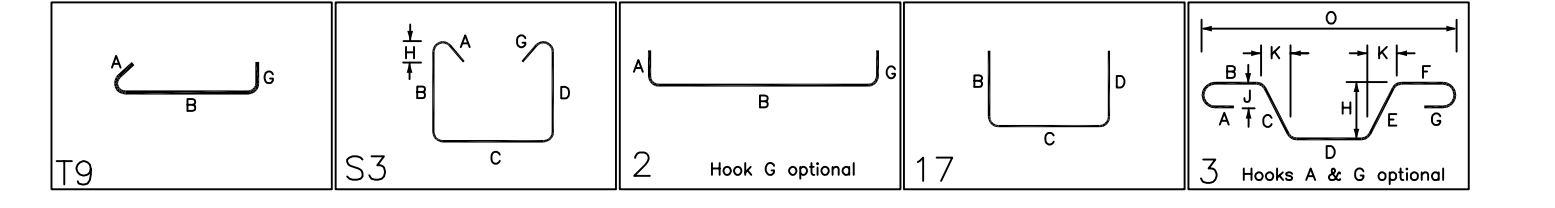
CUSTOMER:
AUSTIN COMMERCIAL

ENGINEER:
L.A FUESS PARTNERS

ISS.	BY.	DATE	DESCRIPTION
	BCS	12/23/21	FOR APPROVAL

DETAILER: BCS JOB #: 21022 SHEET #: R22.008

Bar No.	Qty	Size	Total Length	X	Y	Z	U	V	W	X	Y	Z	U	V	W	X	Y	
4AE08	116	#4	4'-0"	0	0	0	0	0	0	0	0	0	0	0	0	0	0	0
4AE09	76	#4	6'-5 1/2"	0	0	0	0	0	0	0	0	0	0	0	0	0	0	0
4AE10	24	#4	4'-8 1/2"	0	0	0	0	0	0	0	0	0	0	0	0	0	0	0
4AE11	24	#4	1'-11"	0	0	0	0	0	0	0	0	0	0	0	0	0	0	0
4AE12	96	#4	7'-1"	0	0	0	0	0	0	0	0	0	0	0	0	0	0	0
4AE13	48	#4	4'-5"	0	0	0	0	0	0	0	0	0	0	0	0	0	0	0
4AE14	96	#4	4'-4 1/2"	0	0	0	0	0	0	0	0	0	0	0	0	0	0	0
4AE15	58	#4	7'-5 1/2"	0	0	0	0	0	0	0	0	0	0	0	0	0	0	0
4AE35	108	#4	6'-4"	0	0	0	0	0	0	0	0	0	0	0	0	0	0	0
4AE36	54	#4	4'-11 1/2"	0	0	0	0	0	0	0	0	0	0	0	0	0	0	0
9AE01	3	#9	29'-6"	2	1	0	0	0	0	0	0	0	0	0	0	0	0	0
9AE02	3	#9	35'-1"	2	1	0	0	0	0	0	0	0	0	0	0	0	0	0
9AE03	12	#9	28'-4 1/2"	17	1	0	0	0	0	0	0	0	0	0	0	0	0	0
9AE04	8	#9	23'-10"	2	1	0	0	0	0	0	0	0	0	0	0	0	0	0
9AE05	8	#9	22'-7"	2	1	0	0	0	0	0	0	0	0	0	0	0	0	0
9AE06	9	#9	25'-10"	2	1	0	0	0	0	0	0	0	0	0	0	0	0	0
9AE07	9	#9	34'-1"	2	1	0	0	0	0	0	0	0	0	0	0	0	0	0
9AE08	9	#9	15'-4"	2	1	0	0	0	0	0	0	0	0	0	0	0	0	0
9AE09	9	#9	28'-4"	2	1	0	0	0	0	0	0	0	0	0	0	0	0	0
9AE10	9	#9	22'-8 1/2"	3	1	0	0	0	0	0	0	0	0	0	0	0	0	0
9AE11	9	#9	33'-4"	2	1	0	0	0	0	0	0	0	0	0	0	0	0	0
10AE02	8	#10	15'-4"	2	1	0	0	0	0	0	0	0	0	0	0	0	0	0
10AE03	8	#10	28'-7"	2	1	0	0	0	0	0	0	0	0	0	0	0	0	0
10AE04	8	#10	35'-11 1/2"	3	1	0	0	0	0	0	0	0	0	0	0	0	0	0
10AE05	8	#10	33'-1"	2	1	0	0	0	0	0	0	0	0	0	0	0	0	0
10AE07	12	#10	28'-4 1/2"	17	1	0	0	0	0	0	0	0	0	0	0	0	0	0
10AE08	6	#10	17'-4 1/2"	17	1	0	0	0	0	0	0	0	0	0	0	0	0	0



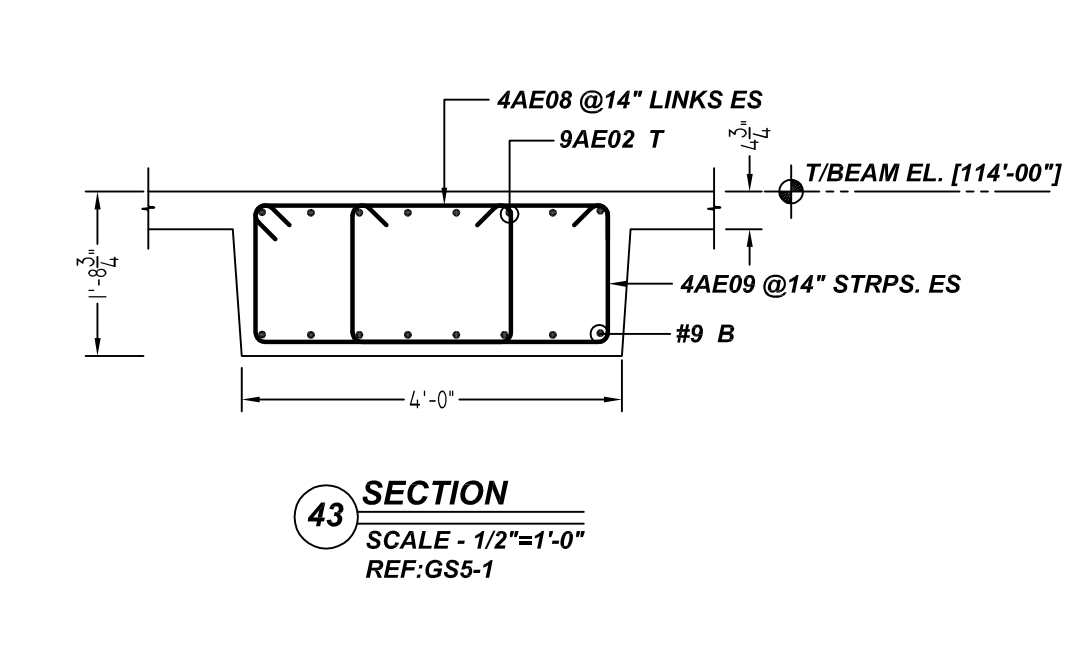
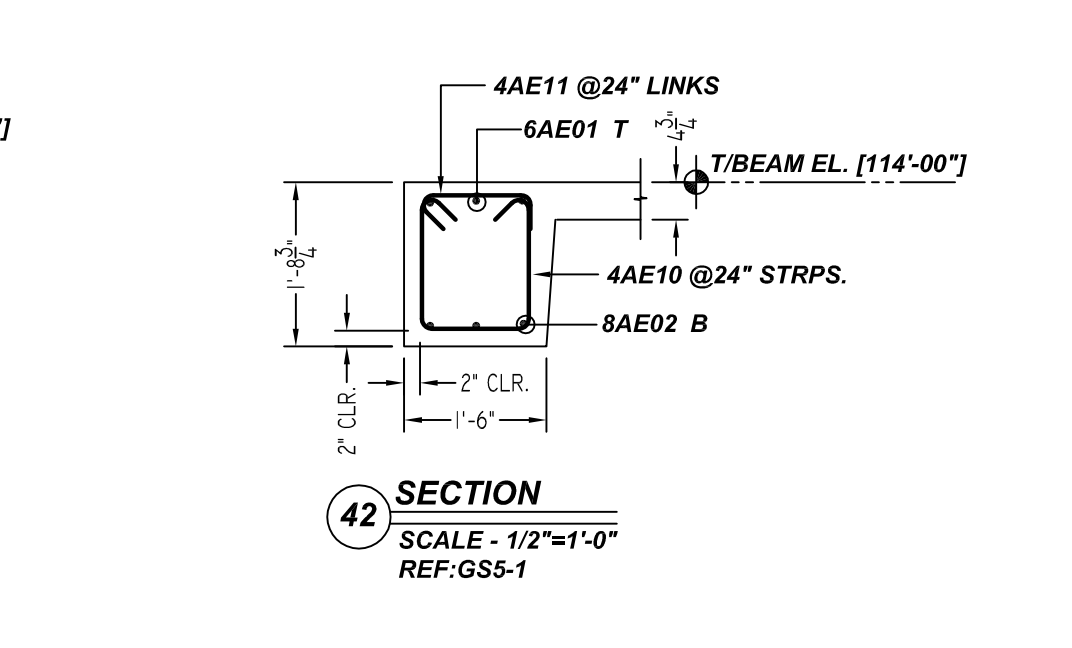
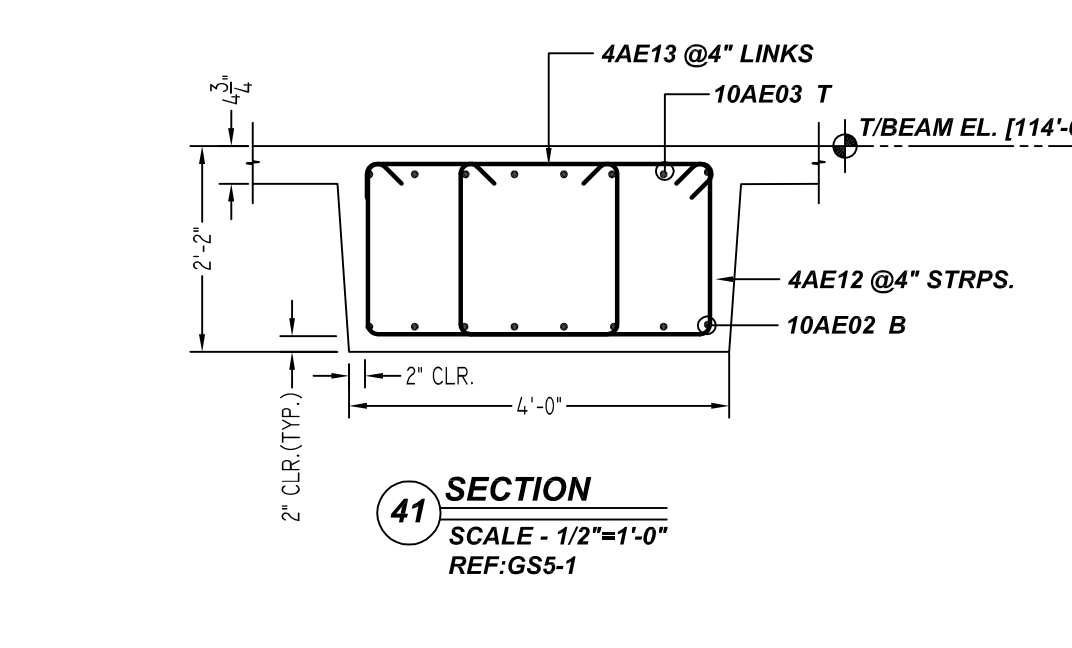
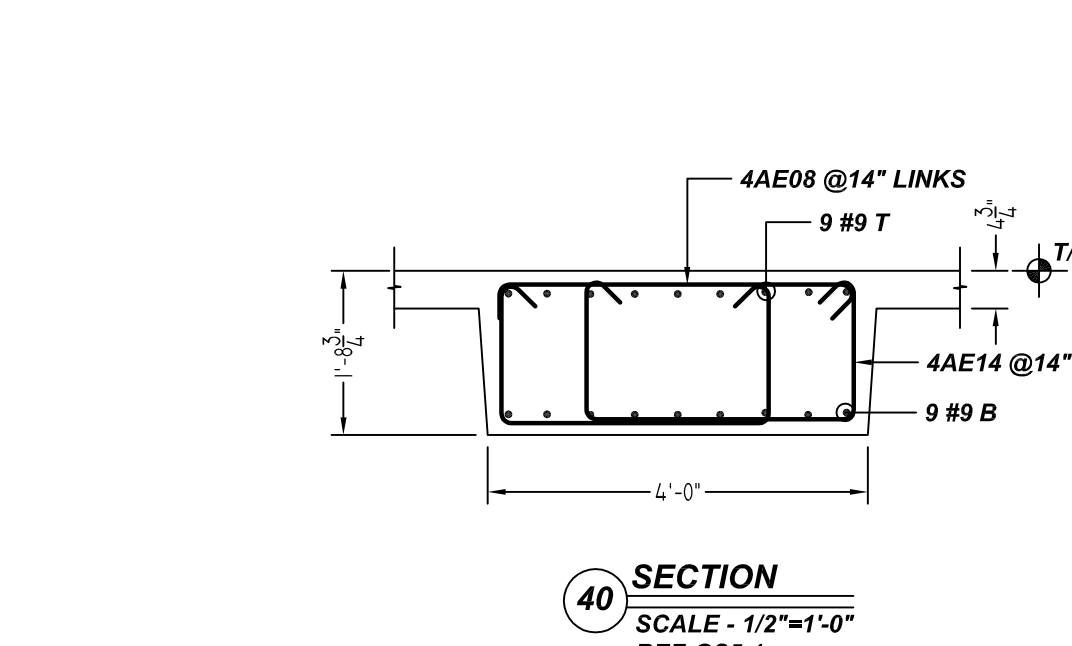
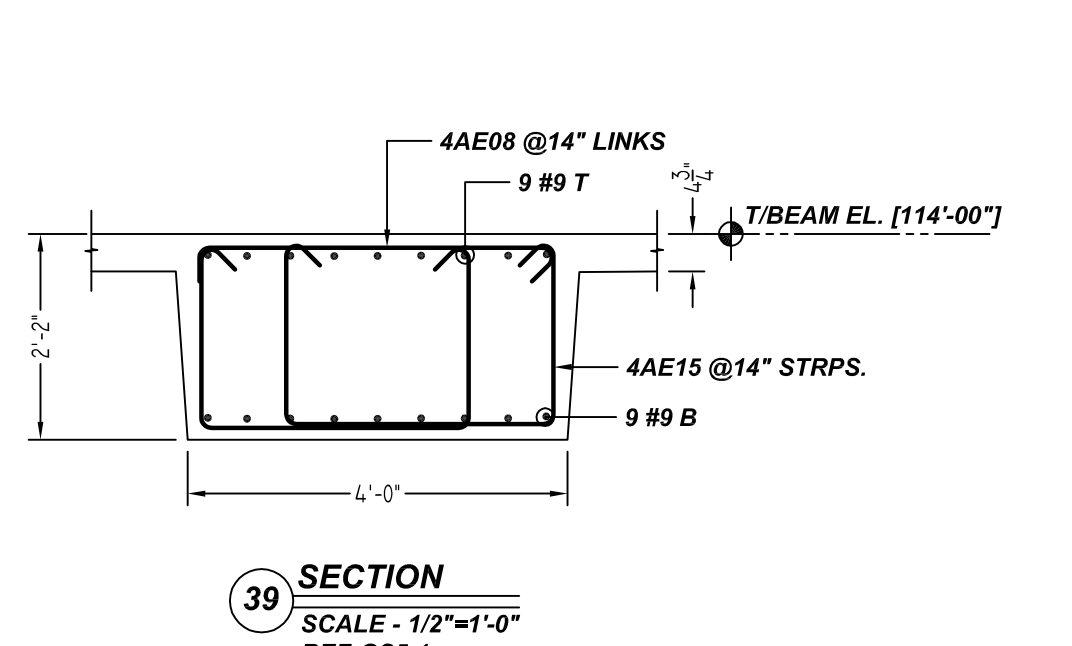
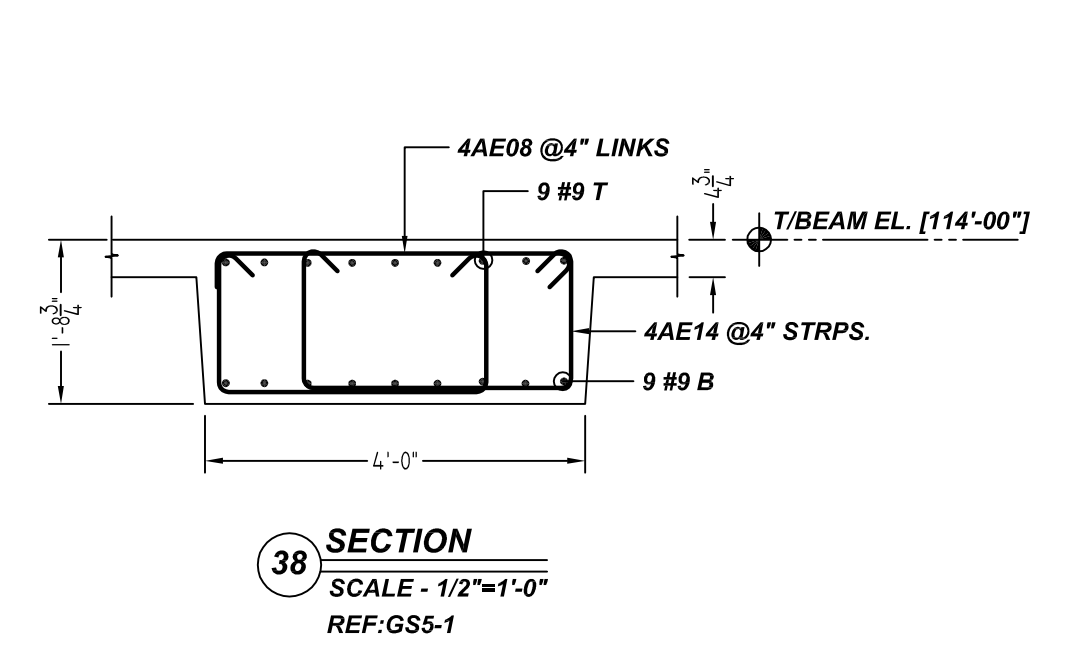
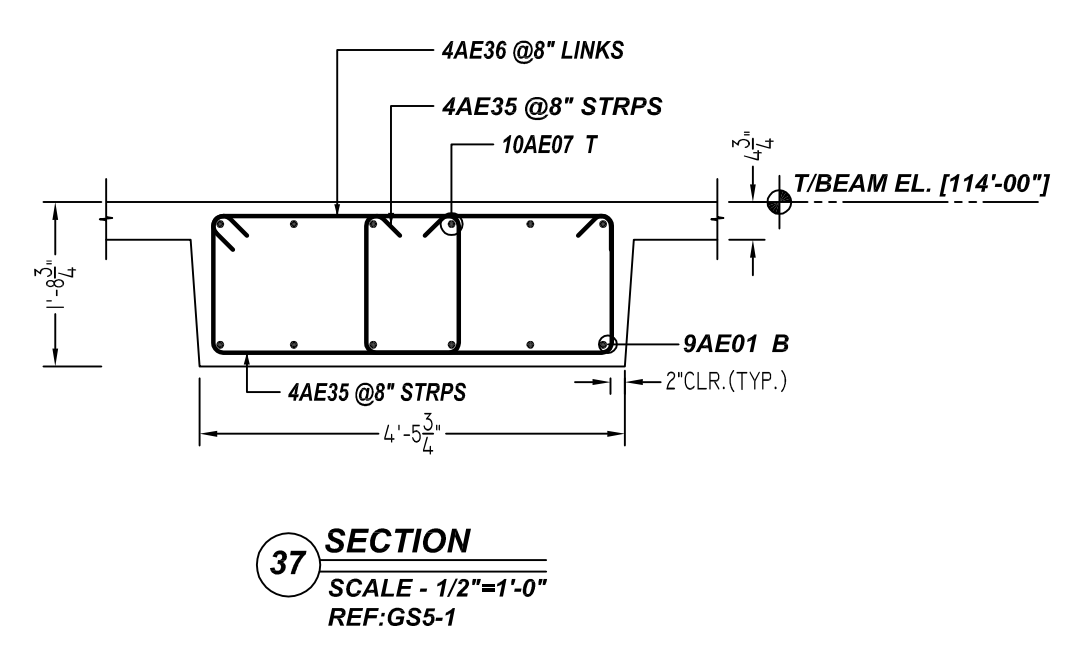
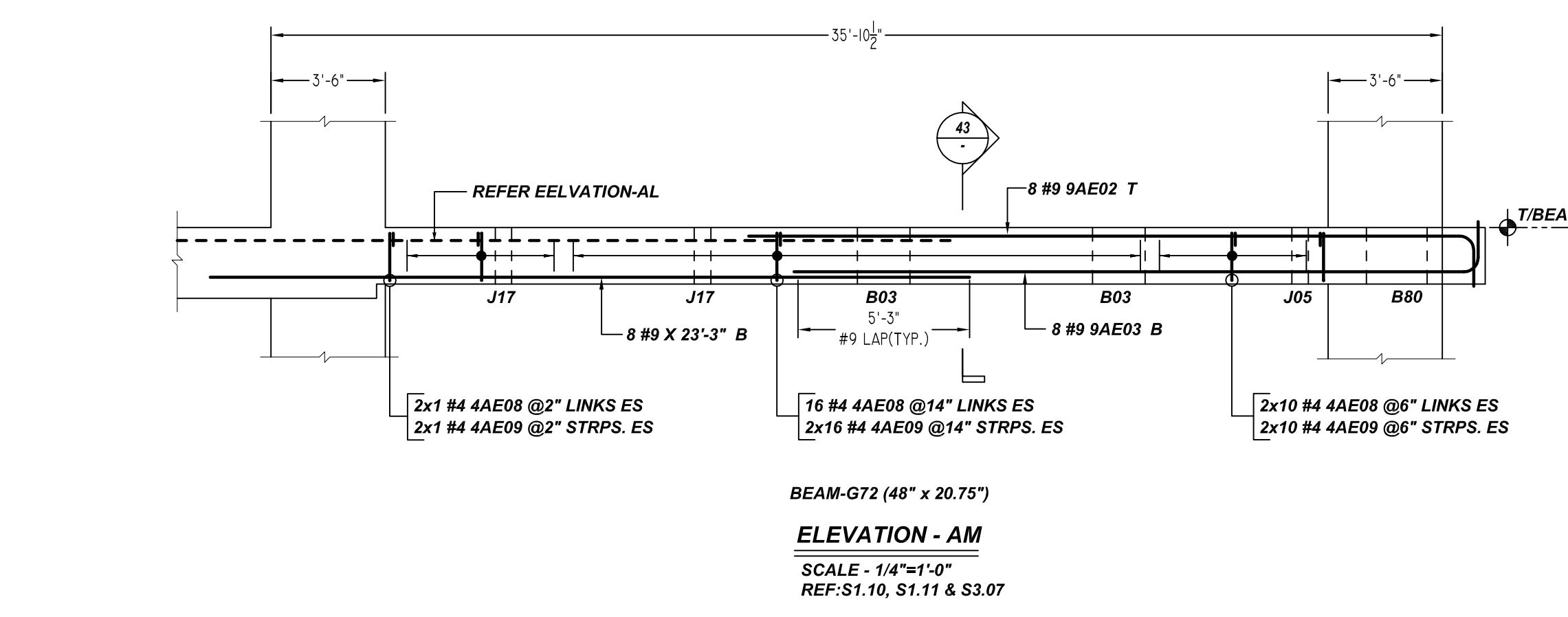
ACCESSORIES DETAILS					
S. NO	ELEMENT	DESCRIPTION	PCS	LFT	REMARK
1	BEAM	2" HT BOLSTER @4'-0" C/C	60	230	FOR BEAM SUPPORT (@ BOTTOM)

TYPICAL REINFORCING BAR CLEARANCE TABLE	
LOCATION	MIN. COVER
ALL EXTERIOR BEAM	2" CLR
ALL INTERIOR BEAM	1 1/2" CLR

NOTE:
 1. A/E PLEASE VERIFY THE ALL BEAM BAR ARRANGEMENTS
 2. FIELD BEND AS REQUIRED AT ARC BEAM LOCATIONS

**ALL BARS IN THIS DRAWING
 ASTM A615 GRADE 60
 BLACK UNCOATED**

LAP SCHEDULE		
SIZE	6000 PSI	
	TOP	BOTTOM
#3	20"	16"
#4	26"	20"
#5	33"	25"
#6	40"	31"
#7	58"	44"
#8	66"	51"
#9	74"	63"
#10	83"	70"
#11	93"	78"



THE PLACING DRAWING IS D'AMBRA'S INTERPRETATION OF THE CONTRACT DRAWINGS. IT IS NOT INTENDED AS A STANDALONE DOCUMENT AND MUST ALWAYS BE USED IN CONJUNCTION WITH THE CONTRACT DRAWINGS.

SHEET TITLE: OFFICE BUILDING MEZZANINE FLOOR BEAM (POUR#1) REINFORCEMENT DETAILS			
PROJECT: GRANITE PARK VI			
LOCATION: PLANO, TEXAS			
ISS.	BY.	DATE	DESCRIPTION
0	BCS	12/23/21	FOR APPROVAL
CUSTOMER: AUSTIN COMMERCIAL			
ENGINEER: L.A FUESS PARTNERS			
DETAILER: BCS		JOB # 21022	SHEET # R22.009