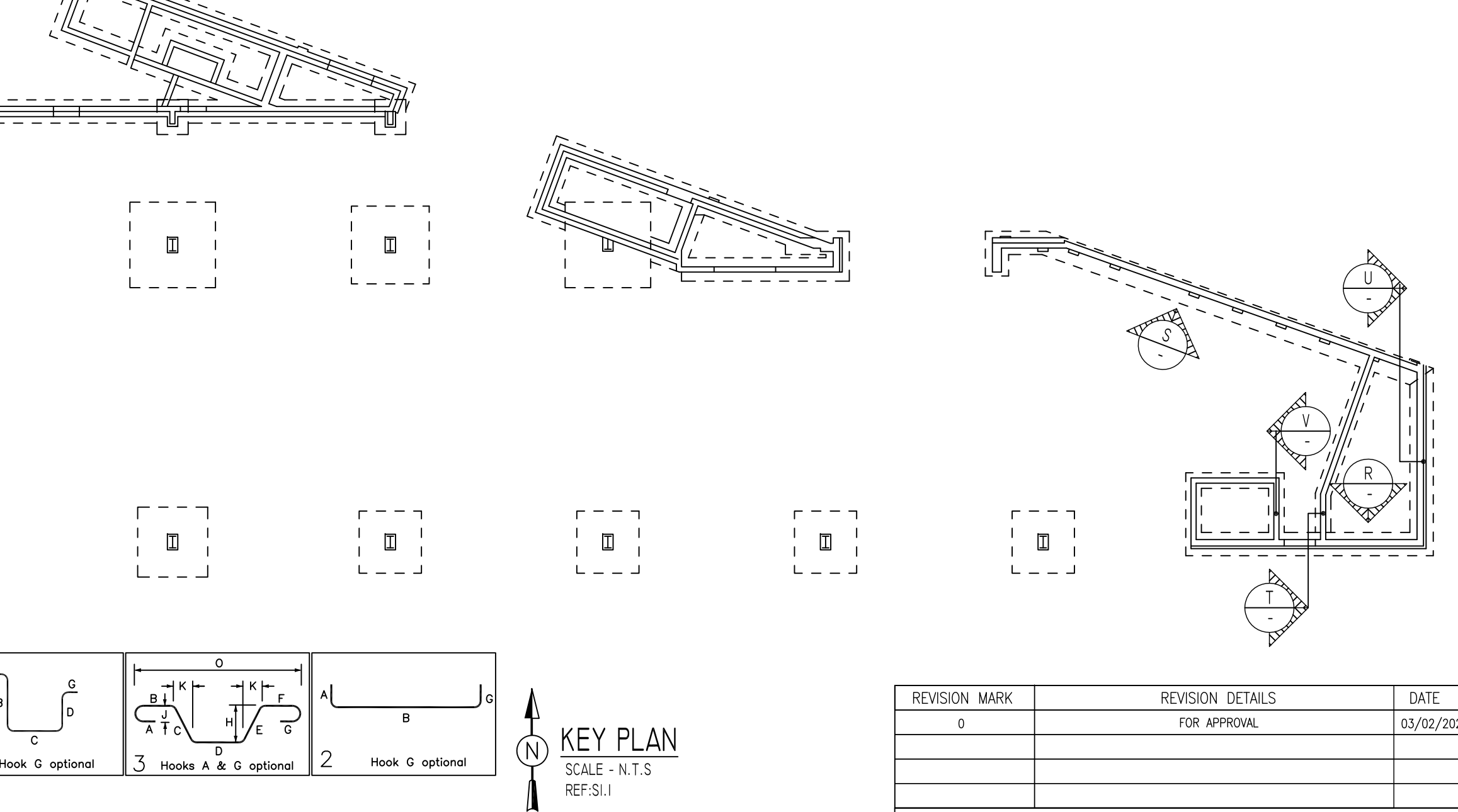
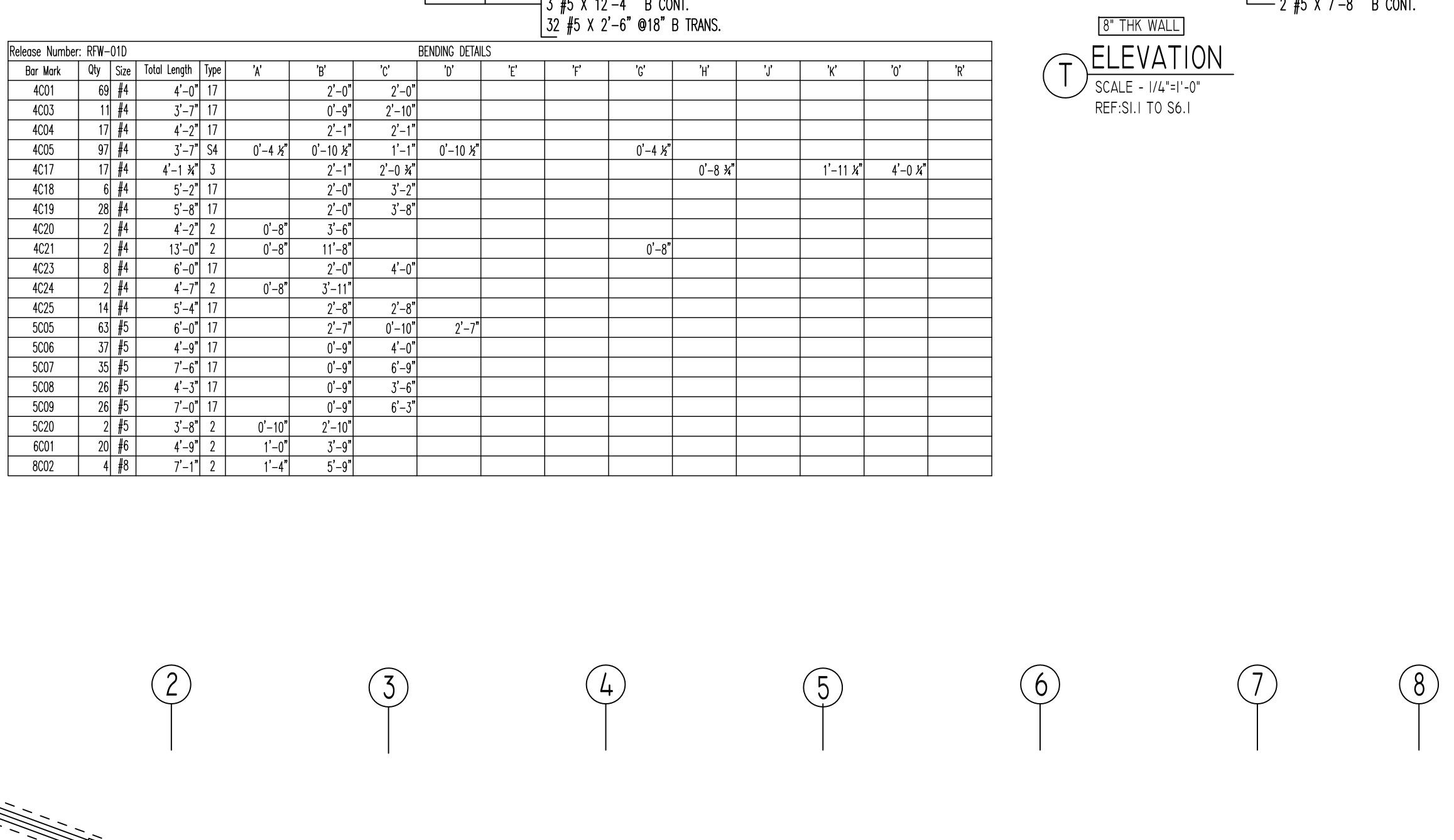
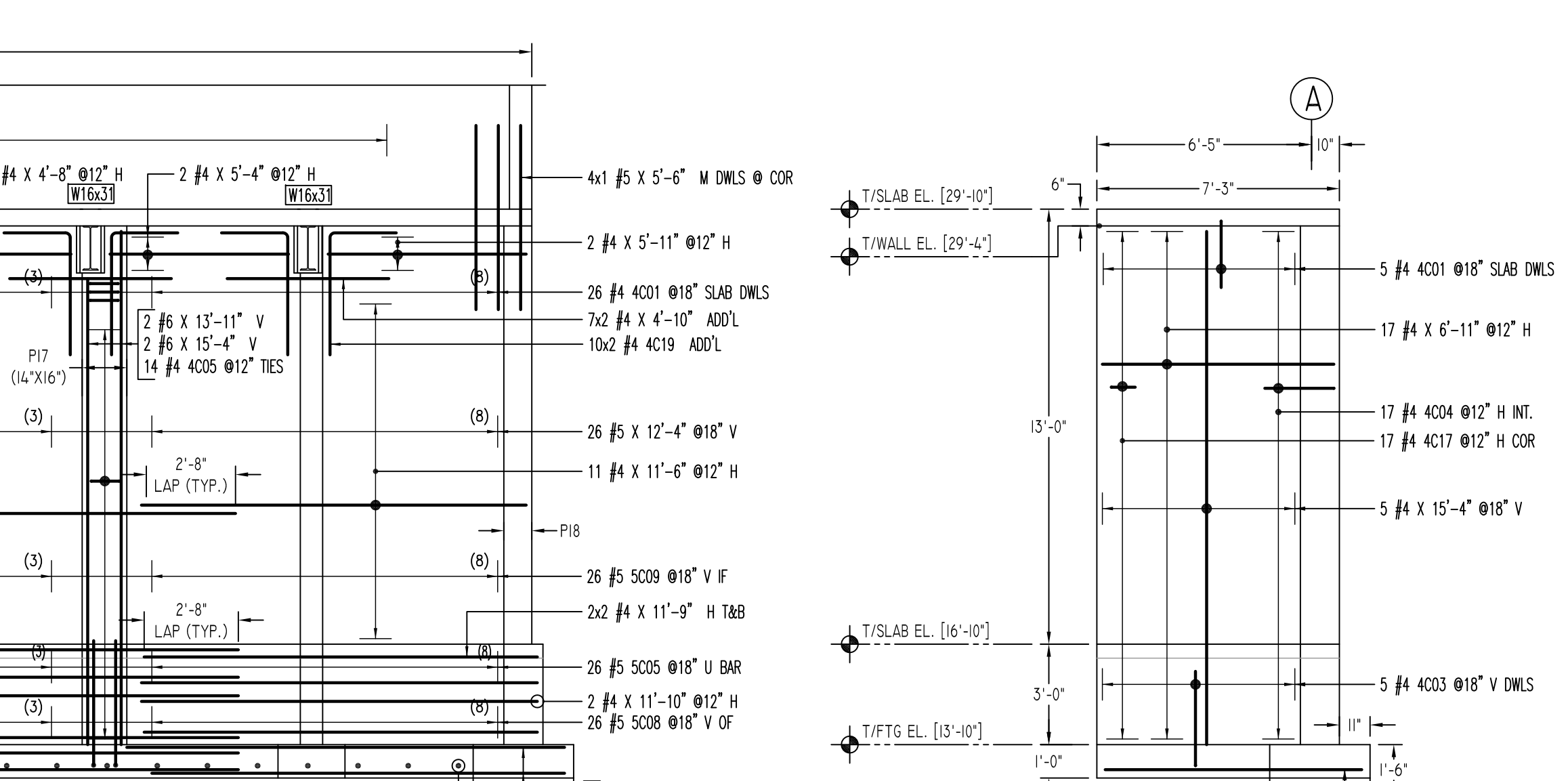
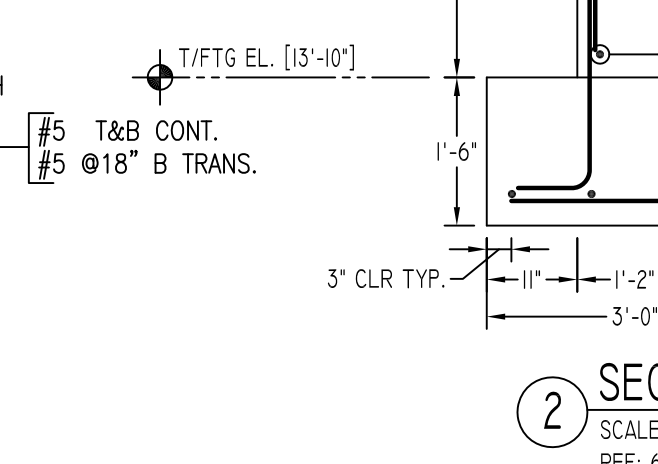
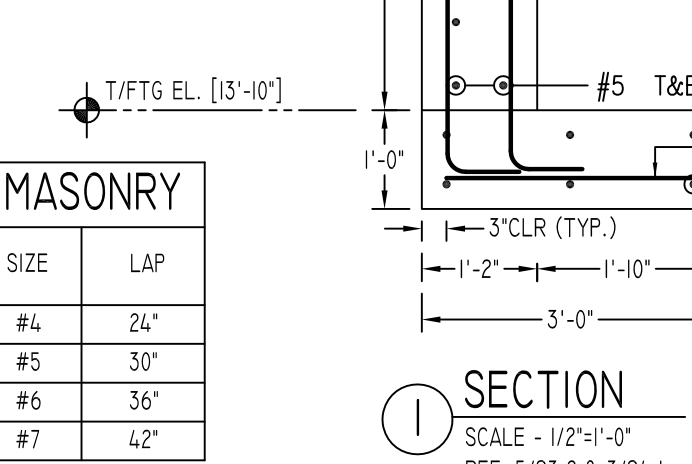
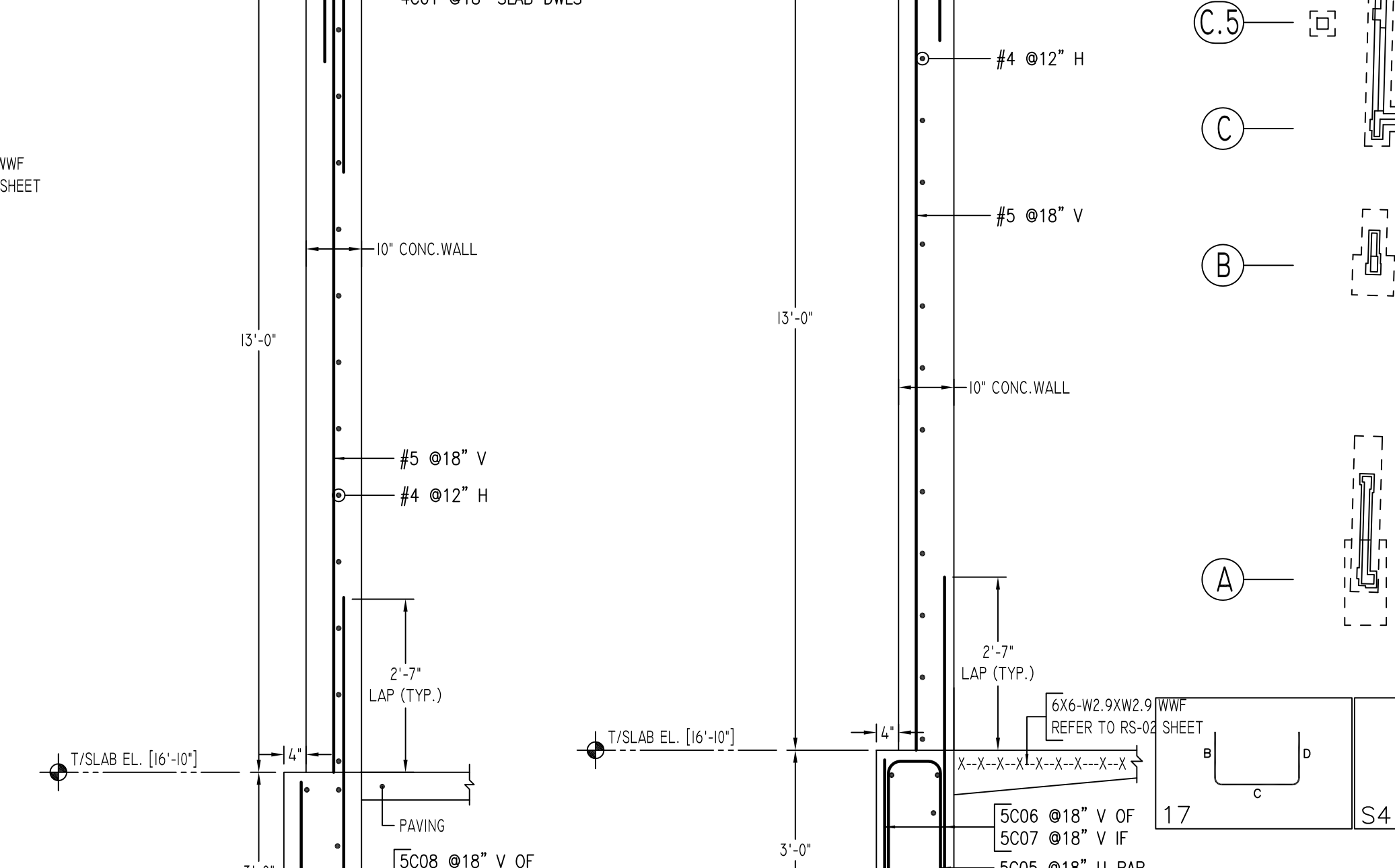
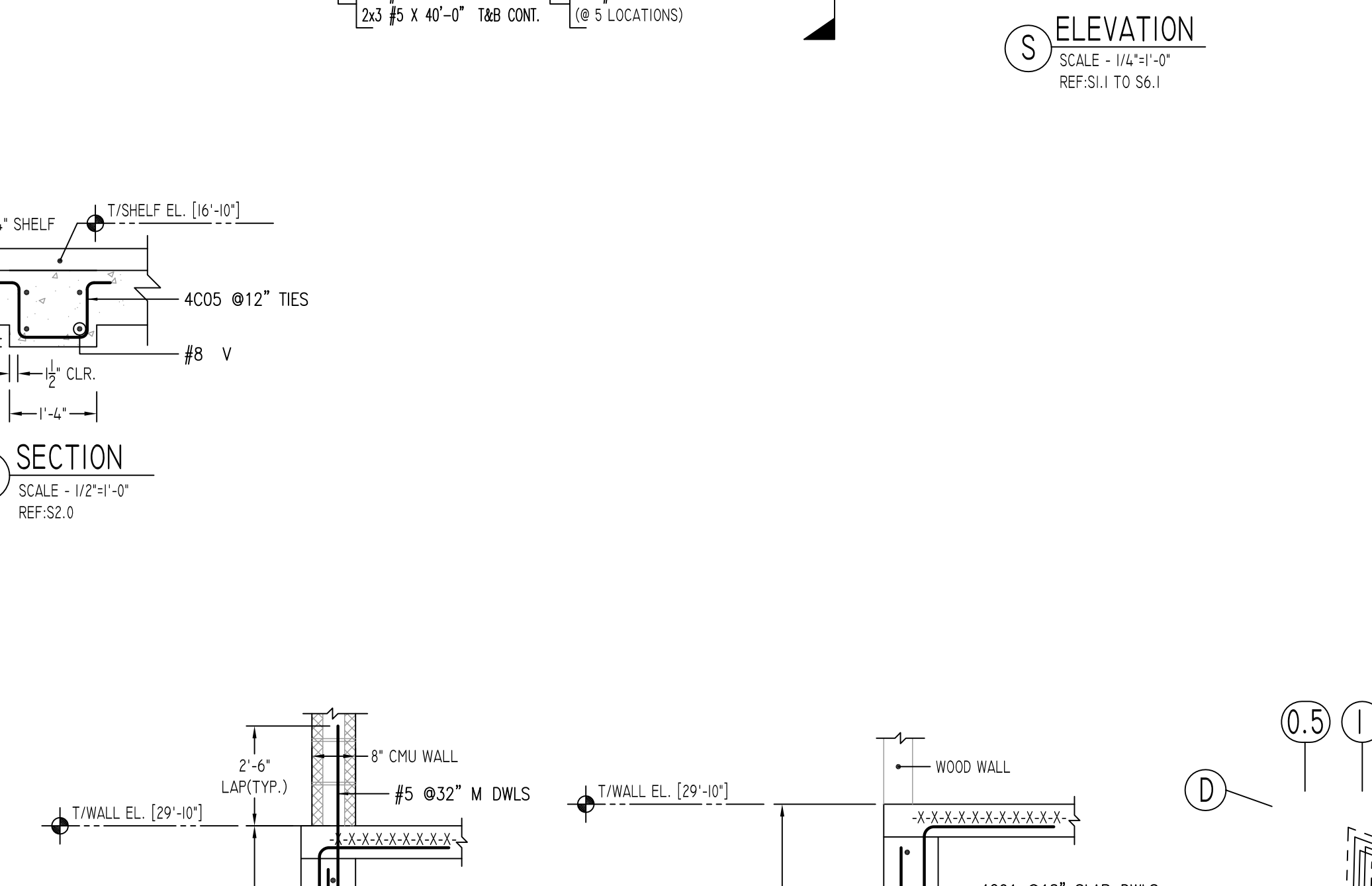
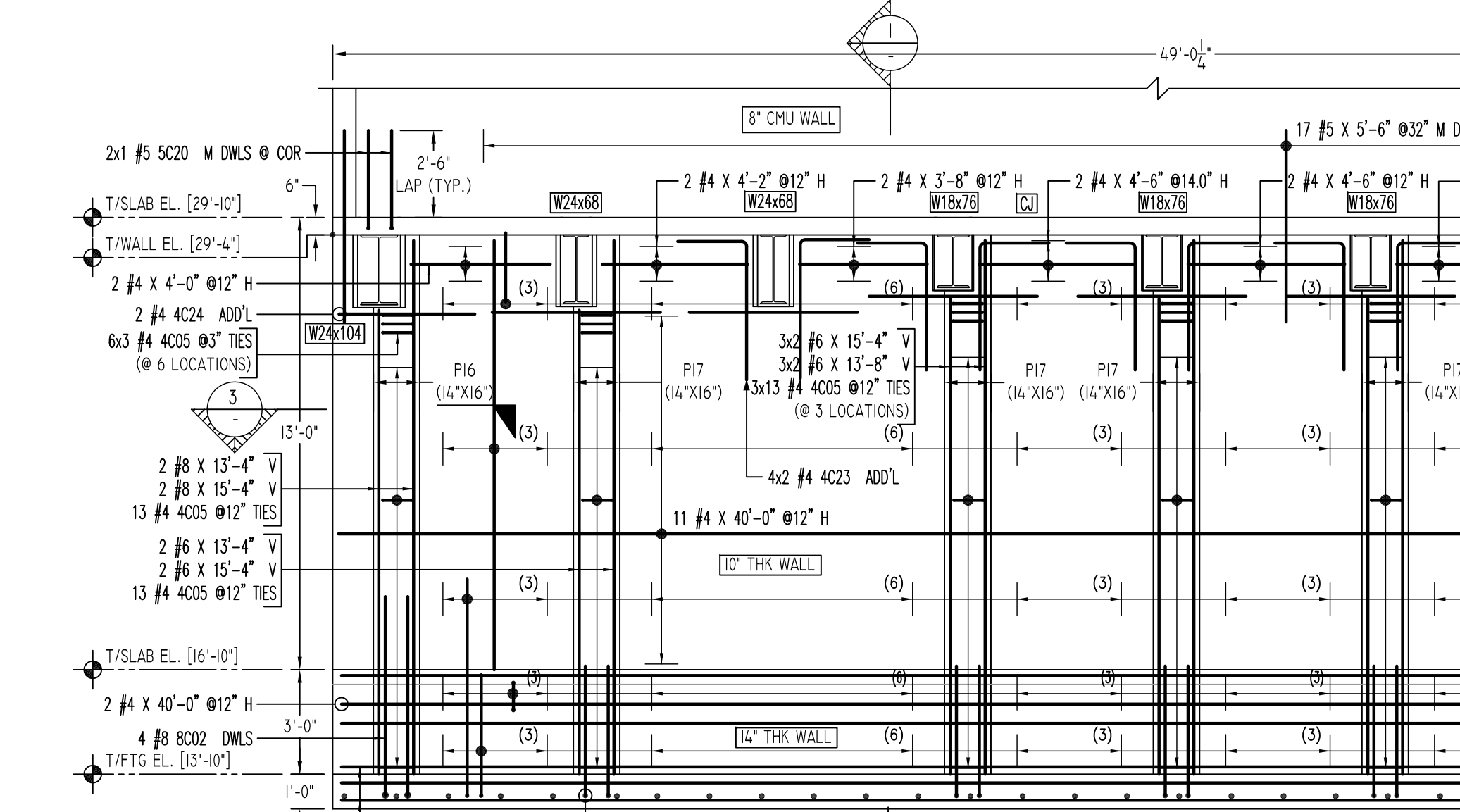


FOOTING SCHEDULE				
TYPE	FOOTING SIZE		REINFORCEMENT EW	REMARK
	LENGTH X WIDTH	DEPTH		
F30	3'-0" X 3'-0"	1'-3"	(4)- #5 EACH WAY	-
F40A	4'-6" X 4'-0"	1'-3"	(5)- #6 EACH WAY	-
F80	8'-0" X 8'-0"	1'-9"	(9)- #6 EACH WAY	-
F90	9'-0" X 9'-0"	2'-0"	(12)- #6 EACH WAY	-
F100	10'-0" X 10'-0"	2'-3"	(14)- #6 EACH WAY	-
F110	11'-0" X 11'-0"	2'-6"	(17)- #8 EACH WAY	(12)- #6 TOP EACH WAY

TYPICAL REINFORCING BAR CLEARANCE TABLE		
LOCATION	MIN. COVER	
FOOTINGS AGAINST EARTH	3" CLR	
COLUMNS AND PIERS (VERTICAL REINF.)	2" CLR	
WALLS INTERIOR FACE	3/4" CLR	
WALLS EXTERIOR FACE (#5 & SMALLER)	1 1/2" CLR	
WALLS EXTERIOR FACE (#6 & LARGER)	2" CLR	
SLAB INTERIOR FACE (#5 & SMALLER)	3/4" CLR	
SLAB EXTERIOR FACE (#6 & LARGER)	1 1/2" CLR	

LAP SCHEDULE		
SIZE	4000 PSI	
	TOP	OTHERS
#3	24"	19"
#4	32"	25"
#5	40"	31"
#6	48"	37"
#7	70"	54"
#8	80"	62"
#9	91"	70"
#10	102"	79"
#11	113"	87"

MASONRY	
SIZE	LAP
#4	24"
#5	30"
#6	36"
#7	42"



Bar Mark	Qty	Size	Total Length	Type	X'	Y'	Z'	W'	V'	U'	T'	S'	R'	Q'	P'	O'	N'	M'	L'	K'	J'	I'	H'	G'	F'	E'	D'	C'	B'	A'		
4001	68	#4	4'-0"	17			2'-0"																									
4003	11	#4	3'-7"	17			0'-9"																									
4004	17	#4	4'-2"	17			2'-1"																									
4005	97	#4	3'-7"	54	0'-4.8"	0'-10.8"	1'-1"																									
4017	17	#4	4'-11.8"	3	2'-1"	2'-0.8"	1'-1"																									
4018	8	#4	3'-7"	17			2'-0"																									
4019	28	#4	5'-8"	17			2'-0"																									
4020	2	#4	4'-2"	2	0'-8"	3'-6"																										
4021	2	#4	13'-0"	2	0'-8"	11'-8"																										
4023	8	#4	6'-0"	17			2'-0"																									
4024	2	#4	4'-7"	2	0'-8"	3'-11"																										
4025	14	#4	3'-4"	17			2'-8"																									
5005	63	#5	6'-8"	17			2'-7"																									
5006	37	#5	4'-9"	17			0'-9"																									
5007	35	#5	7'-4"	17			0'-9"																									
5008	28	#5	4'-3"	17			0'-9"																									
5009	28	#5	7'-0"	17			0'-9"																									
5020	2	#5	3'-8"	2	0'-10"	2'-10"																										
6001	20	#6	4'-9"	2	1'-0"	3'-9"																										
8002	4	#8	7'-11"	2	1'-4"	5'-9"																										

REVISION MARK	REVISION DETAILS	DATE
0	FOR APPROVAL	03/02/2021

PROJECT	FAIRFIELD STATION LOFTS
LOCATION	FAIRFIELD, CT 06824
ARCHITECT	GRANOFF ARCHITECTS
ENGINEER	MICHAEL HORTON ASSOCIATES, INC.
CUSTOMER	CONCRETE SUPERSTRUCTURES
DRAWN BY:	SKM/MRS
DATE:	03/02/21
REVIEWED BY:	T/L
JOB NO.	21024
DRAWING TITLE:	FOUNDATION WALLS REINFORCEMENT DETAILS
DRAWING NO.:	RFW-01D

Abbreviations:
 IF=Inside Face
 OF=Outside Face
 EF=Each Face
 V=Vertical
 H=Horizontal
 COR=Corner
 SLAB DWLS=Slab Dowels
 EW=Each Way
 B=Bottom
 T=Top
 M DWL=Masonry Dowel
 BB=Bond Beam
 ALT: Alternate
 APPROX: Approximate
 ES=Each Side

OPNG=Opening
 BAL: Balance
 BTW=Between
 CJ=Construction Joint
 CLR: CLEARANCE
 CMU=Concrete Masonry Unit
 CONT=Continuous
 EMBED=Embedment
 SW=Short Way
 LW=Long Way
 (BL)=Black Bar
 (EP)=Epoxy Bar
 (GA)=Galvanized
 (TB)=Threaded Bar
 (CB)=Coupler Bar

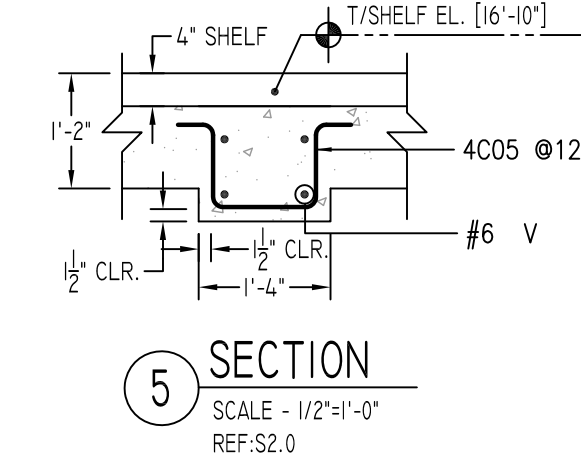
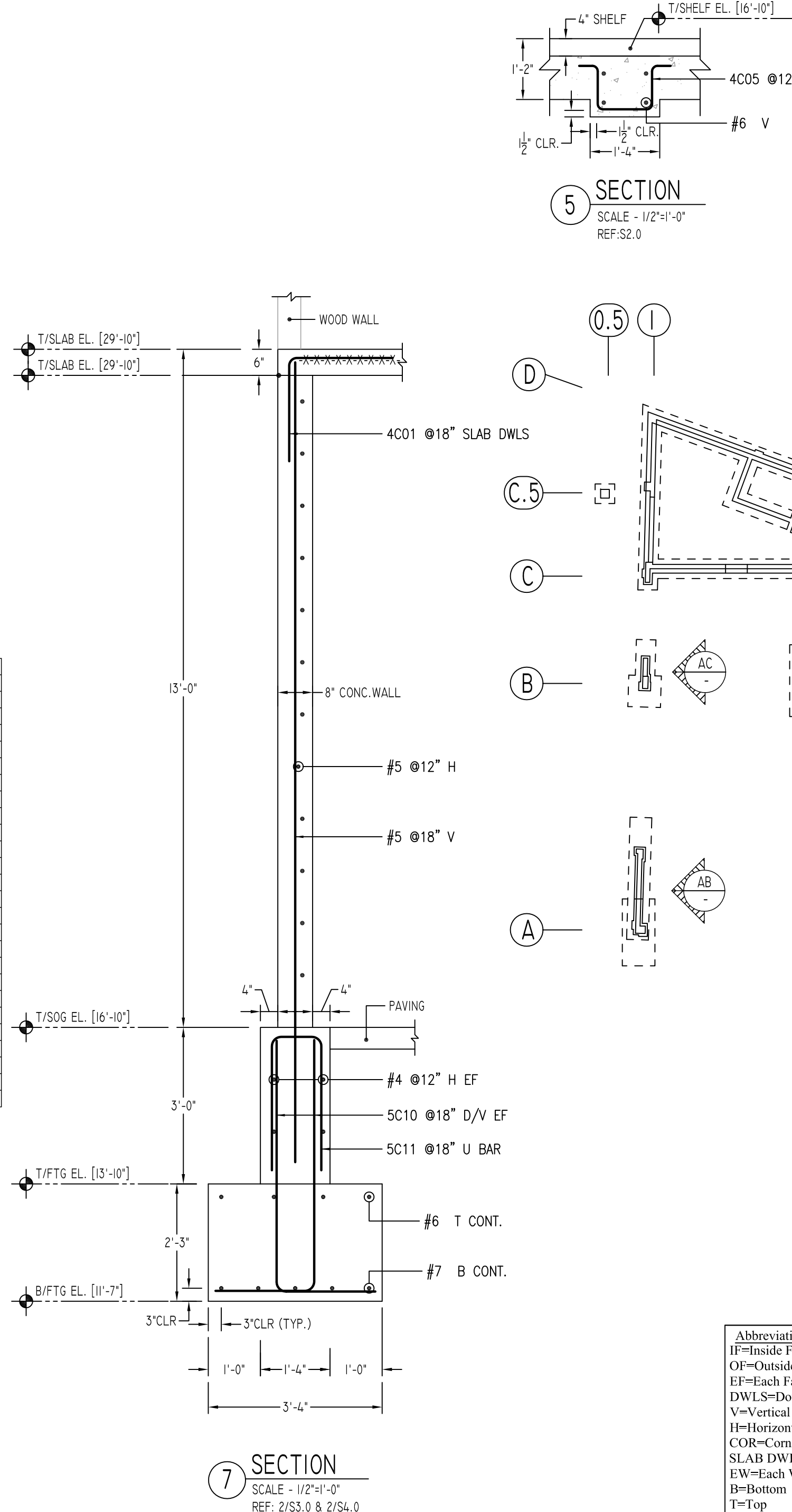
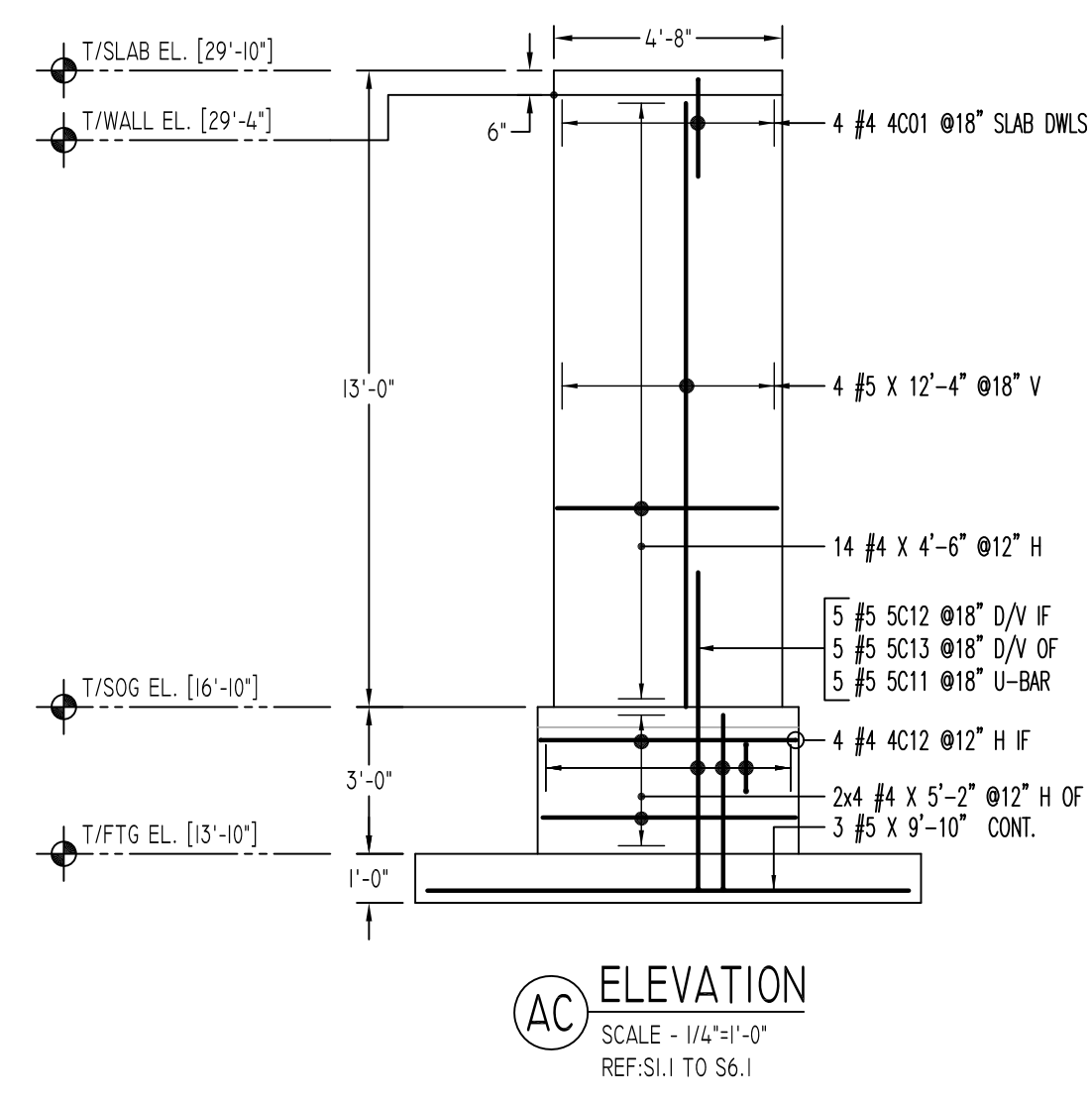
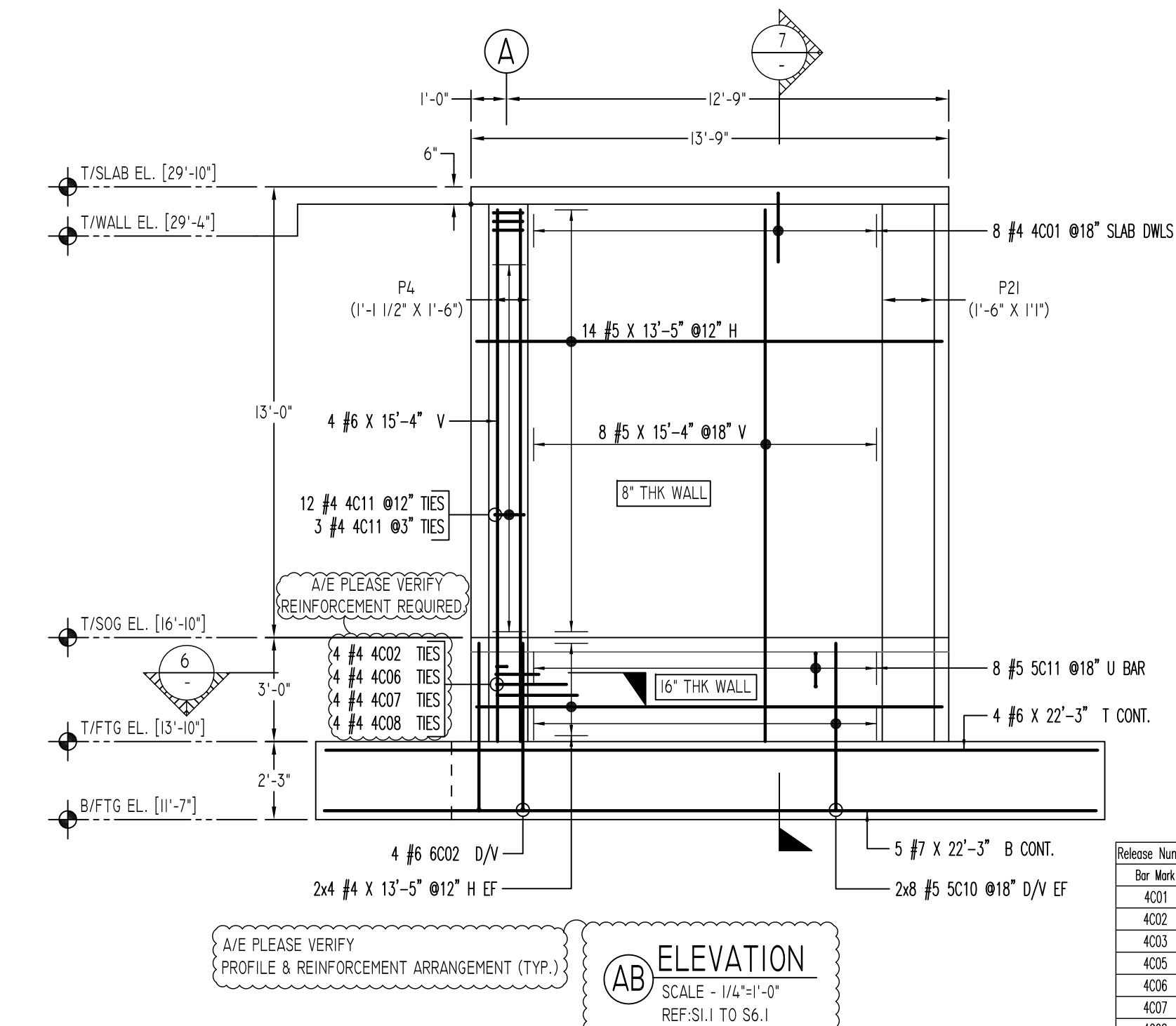
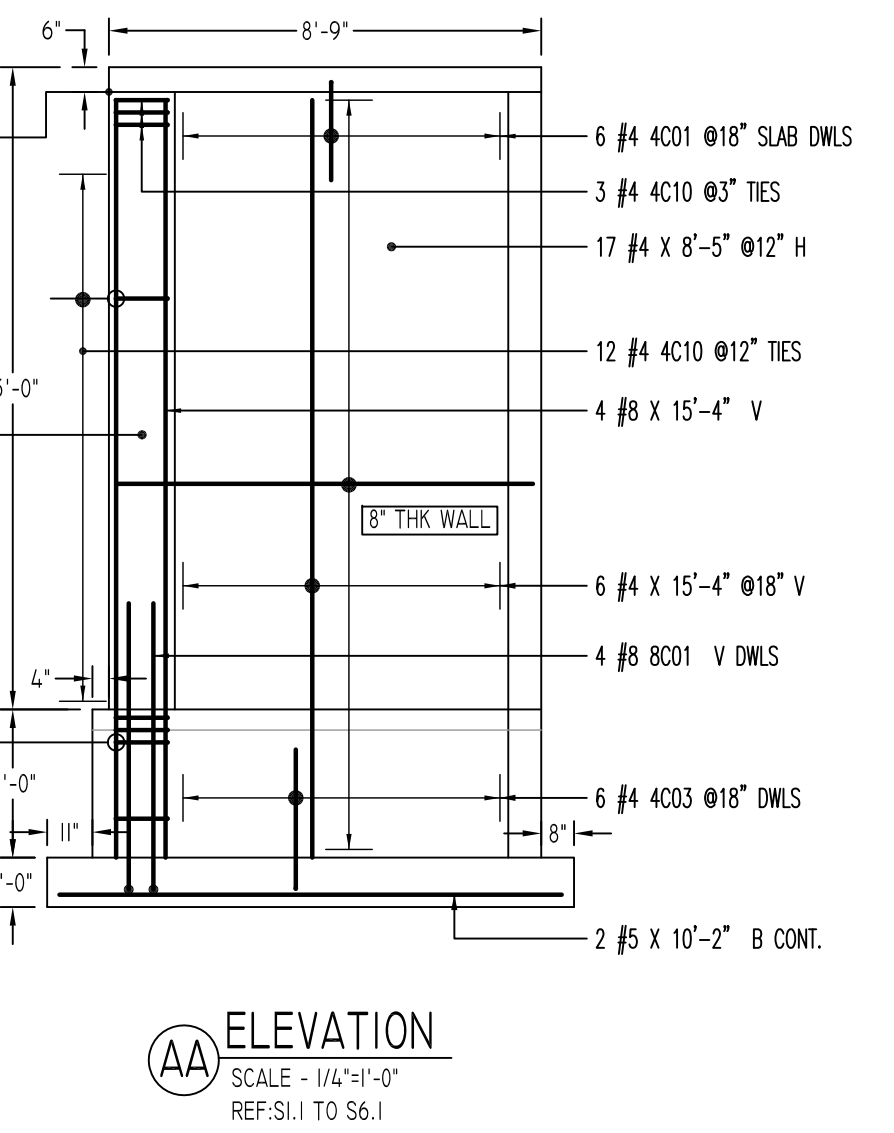
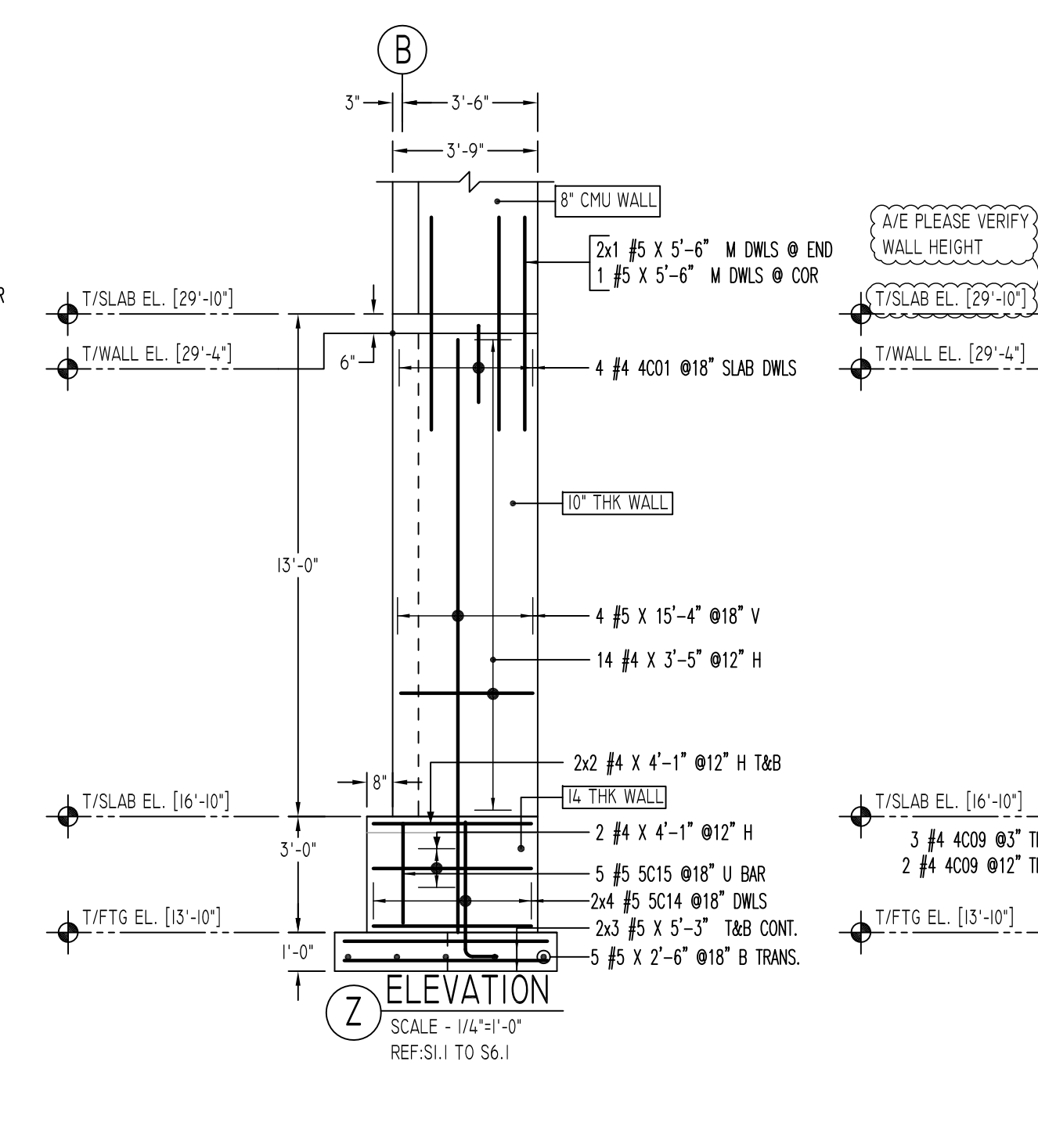
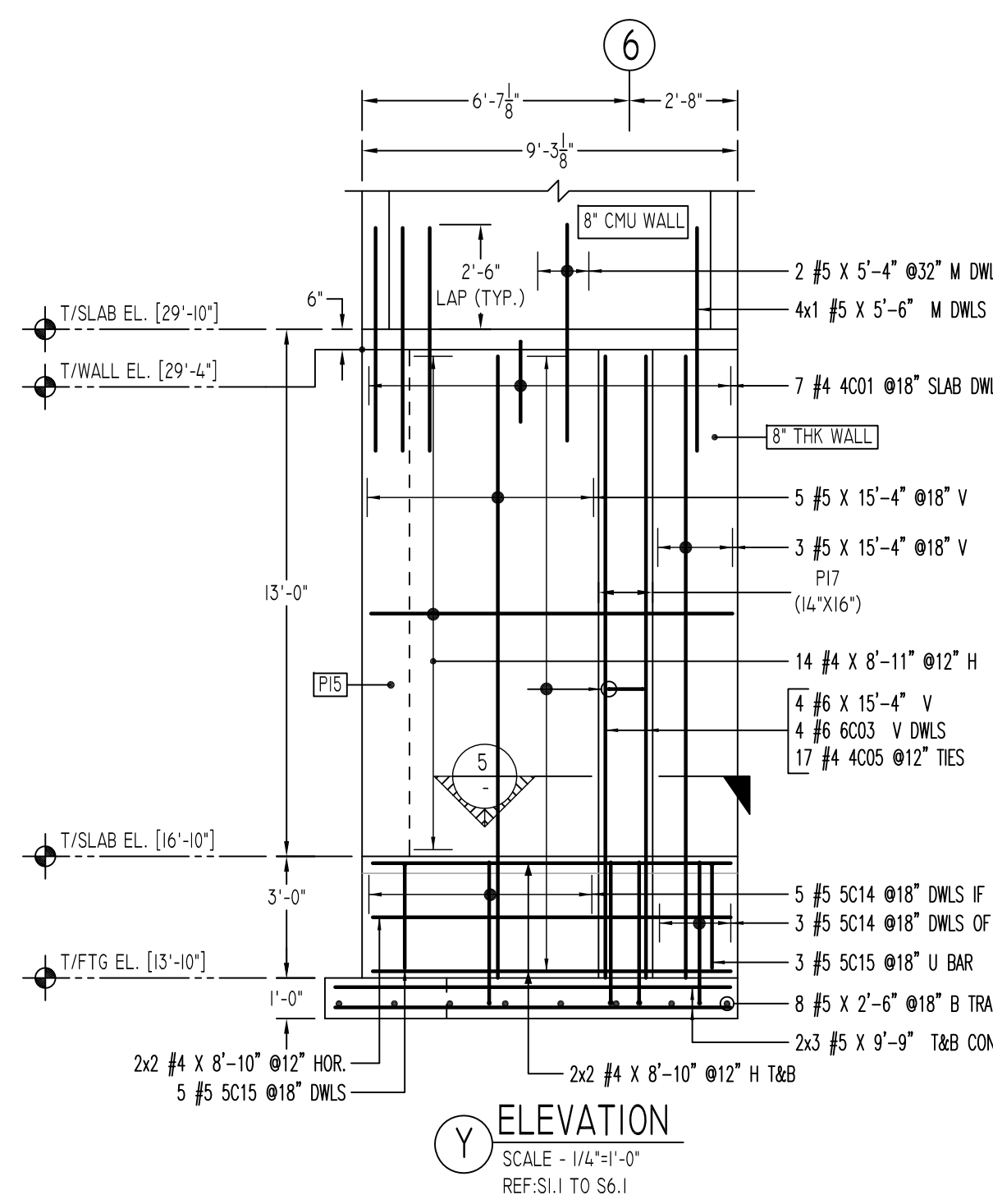
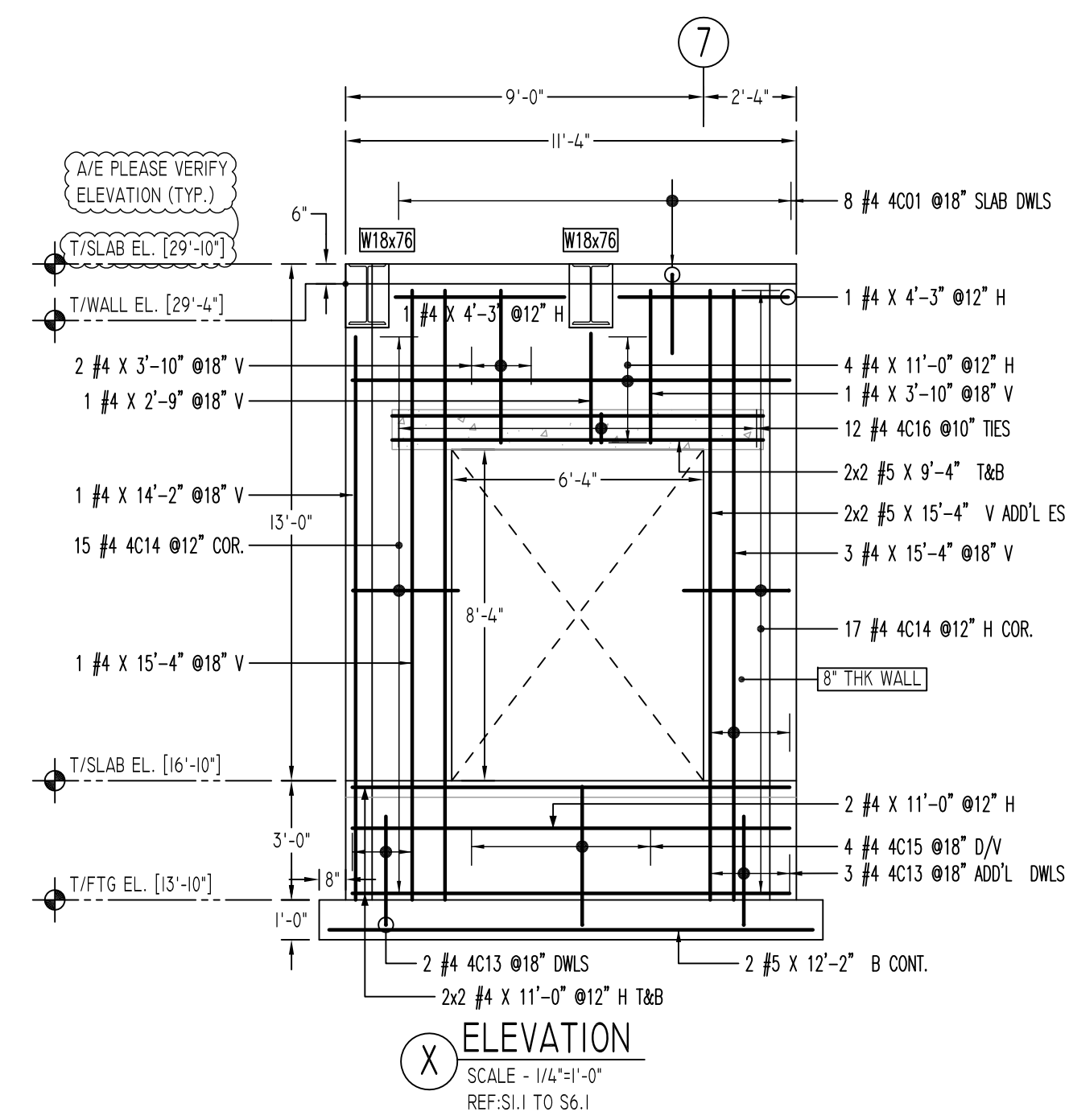
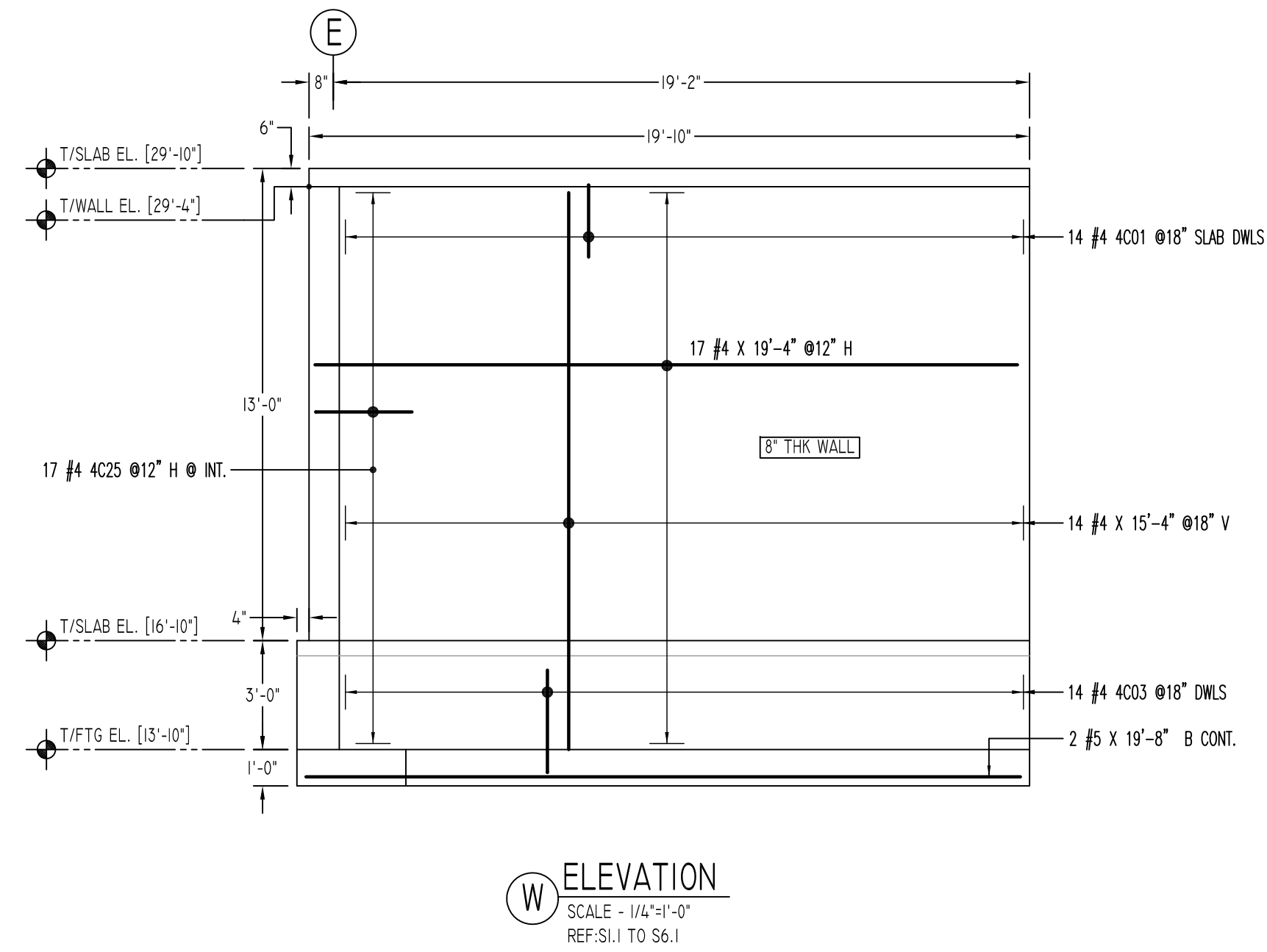
NOTICE
 Shortages, improper fabrication or claims for any other reason must be reported to this company within a period of 15 days of delivery. This company reserves the right to field inspect prior to replacement or reconditioning of nonconforming material, and will not honor charges for work done in the field without specific authorization from this company.

REINFORCING STEEL PLACING DRAWINGS ONLY USE IN CONJUNCTION WITH CONTRACT DRAWINGS & SPECIFICATIONS. ELEVATIONS & DIMENSIONS SHOWN ON THIS DRAWING ARE FOR DETAILING PURPOSES ONLY AND SHOULD NOT BE USED FOR CONSTRUCTION UNLESS VERIFIED BY ENGINEER OR CONTRACTOR.

ALL BARS IN THIS DRAWING
 ASTM A615 GRADE 60
 BLACK UNCOATED

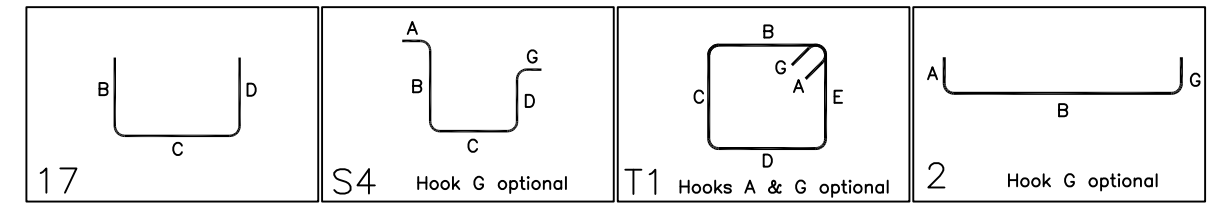
A/E PLEASE VERIFY
 LAP SCHEDULE (TYP.)

A/E PLEASE VERIFY
 COVER VALUE (TYP.)



Rebar Number: RFW-01E

Bar Mark	Qty	Size	Total Length	Type	X'	Y'	Z'	W'	V'	U'	T'	S'	R'	Q'	P'
4001	5	#4	4'-0"	17		2'-0"		2'-0"							
4002	4	#4	3'-6"	17		1'-3"		1'-0"		1'-3"					
4003	20	#4	3'-7"	17		0'-9"		2'-10"							
4005	17	#4	3'-7"	54	0'-4.8"		0'-10.8"		1'-1"				0'-4.8"		
4006	4	#4	3'-1.8"	17		2'-4"		0'-9.8"							
4007	4	#4	4'-8.8"	17		2'-9.8"		1'-8"		1'-0"					
4008	4	#4	2'-0"	17		0'-8"		0'-4"		1'-0"					
4009	5	#4	5'-1"	11	0'-4.8"		1'-1"		1'-1"				0'-4.8"		
4010	15	#4	4'-1"	11	0'-4.8"		1'-1"		0'-7"				0'-4.8"		
4011	15	#4	5'-0"	11	0'-4.8"		0'-10.8"		1'-3"				0'-4.8"		
4012	4	#4	6'-7"	2		0'-8"		5'-3"							
4013	5	#4	3'-6"	17		0'-9"		2'-9"							
4014	32	#4	4'-8"	17		2'-0"		2'-8"							
4015	4	#4	4'-3"	17		0'-9"		3'-8"							
4016	12	#4	3'-1"	11	0'-4.8"		0'-5"		0'-9"				0'-4.8"		
4025	17	#4	5'-4"	17		2'-8"		2'-8"							
5010	16	#5	6'-9"	17		1'-11"		4'-10"							
5011	13	#5	6'-2"	17		2'-7"		1'-0"		2'-7"					
5012	5	#5	8'-3"	17		1'-9"		6'-8"							
5013	5	#5	5'-4"	17		1'-9"		3'-7"							
5014	16	#5	4'-4"	2	0'-10"		3'-6"								
5015	13	#5	5'-7"	17		2'-7"		0'-5"		2'-7"					
6002	4	#6	6'-9"	17		1'-11"		4'-10"							
6003	4	#6	4'-6"	2	1'-0"		3'-6"								
8001	4	#6	7'-2"	2	1'-4"		5'-10"								



AVE PLEASE VERIFY COVER VALUE (TYP.)

SIZE	4000 PSI	
	TOP	OTHERS
#3	24"	19"
#4	32"	25"
#5	40"	31"
#6	48"	37"
#7	70"	54"
#8	80"	62"
#9	91"	70"
#10	102"	79"
#11	113"	87"

LAP SCHEDULE
AVE PLEASE VERIFY LAP SCHEDULE (TYP.)

SIZE	LAP
#4	24"
#5	30"
#6	36"
#7	42"

MASONRY

SIZE	LAP
#4	24"
#5	30"
#6	36"
#7	42"

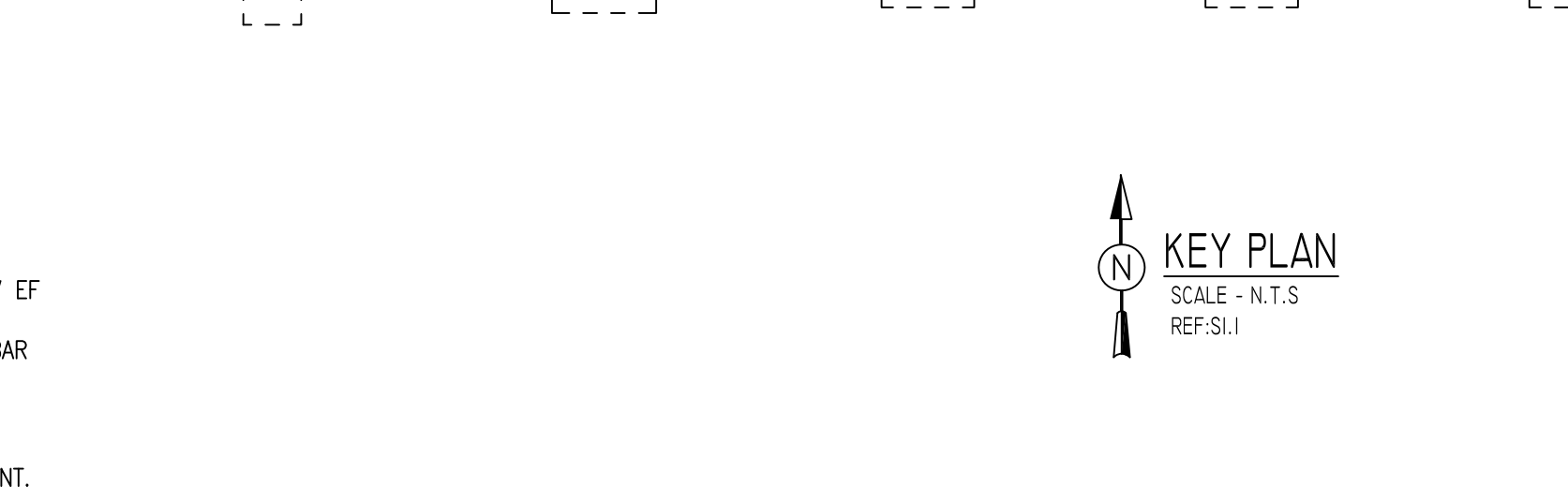
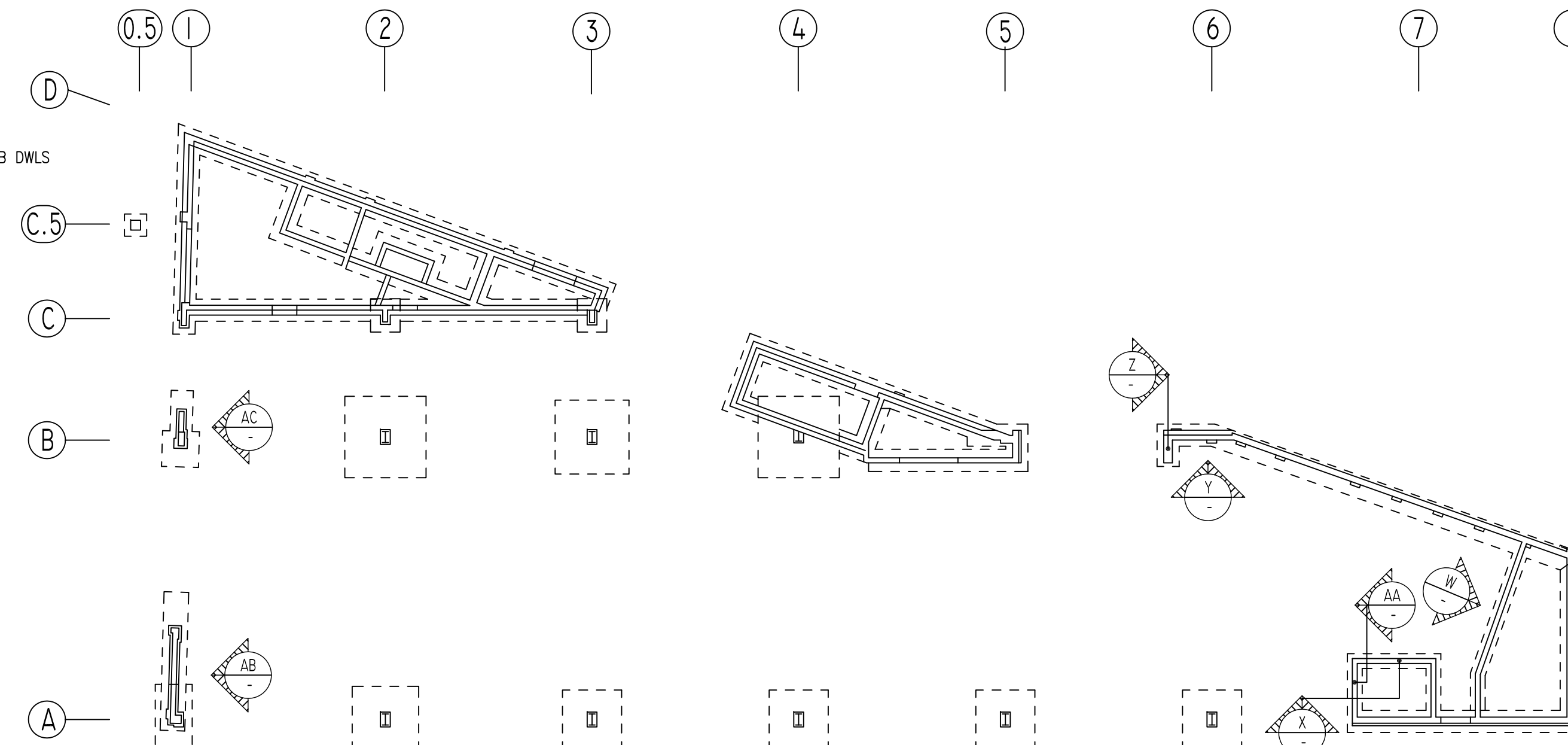
**ALL BARS IN THIS DRAWING
ASTM A615 GRADE 60
BLACK UNCOATED**

FOOTING SCHEDULE

TYPE	FOOTING SIZE		REINFORCEMENT EW	REMARK
	LENGTH x WIDTH	DEPTH		
F30	3'-0"x3'-0"	1'-3"	(4)- #5 EACH WAY	-
F40A	4'-6"x4'-0"	1'-3"	(5)- #6 EACH WAY	-
F80	8'-0"x8'-0"	1'-9"	(9)- #6 EACH WAY	-
F90	9'-0"x9'-0"	2'-0"	(12)- #6 EACH WAY	-
F100	10'-0"x10'-0"	2'-3"	(14)- #6 EACH WAY	-
F110	11'-0"x11'-0"	2'-6"	(10)- #6 EACH WAY	(12)- #6 TOP EACH WAY

TYPICAL REINFORCING BAR CLEARANCE TABLE

LOCATION	MIN. COVER
FOOTINGS AGAINST EARTH	3" CLR
COLUMNS AND PIERS (VERTICAL REINF.)	2" CLR
WALLS INTERIOR FACE	3/4" CLR
WALLS EXTERIOR FACE (#5 & SMALLER)	1 1/2" CLR
WALLS EXTERIOR FACE (#6 & LARGER)	2" CLR
SLAB INTERIOR FACE (#5 & SMALLER)	3/4" CLR
SLAB EXTERIOR FACE (#6 & LARGER)	1 1/2" CLR



Abbreviations:
IF=Inside Face
OF=Outside Face
EF=Each Face
DWLS=Dowels
V=Vertical
H=Horizontal
COR=Corner
SLAB DWLS=Slab Dowels
EW=Each Way
B=Bottom
T=Top
M DWL=Masonry Dowel
BB=Bond Beam
ALT: Alternate
ES=Each Side

OPNG=Opening
BAL=Balance
BTW=Between
CJ=Construction Joint
CLR=CLEARANCE
CMU=Concrete Masonry Unit
CONT=Continuous
EMBED=Embedment
SW=Short Way
LW=Long Way
BL=Black Bar
(EP)=Epoxy Bar
GA=Galvanized
(TB)=Threaded Bar
(CB)=Coupler Bar

NOTICE
Shortages, improper fabrication or claims for any other reason must be reported to this company within a period of 15 days of delivery. This company reserves the right to field inspect prior to replacement or reconditioning of nonconforming material, and will not honor charges for work done in the field without specific authorization from this company.

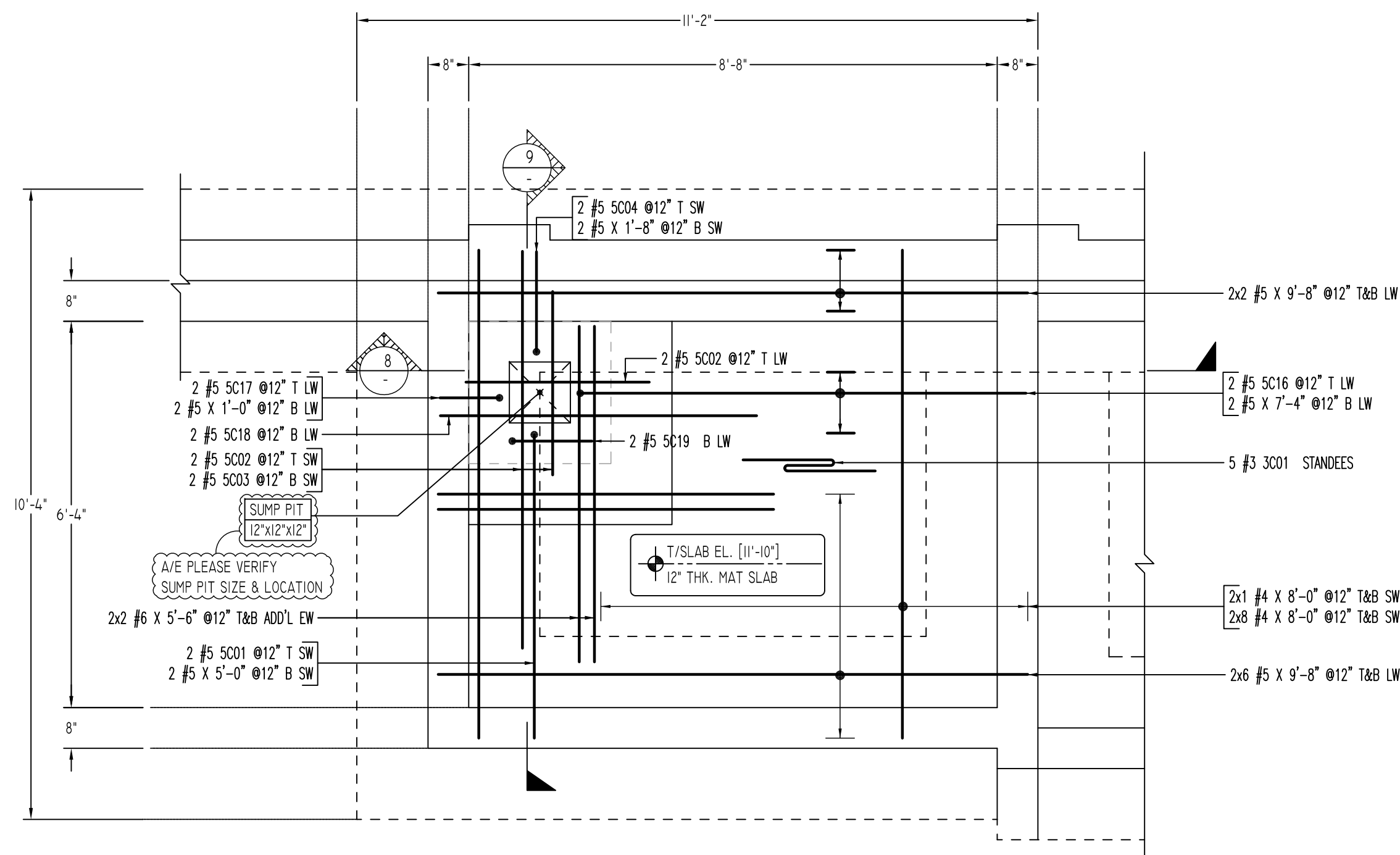
REINFORCING STEEL PLACING DRAWINGS ONLY USE IN CONJUNCTION WITH CONTRACT DRAWINGS & SPECIFICATIONS. ELEVATIONS & DIMENSIONS SHOWN ON THIS DRAWING ARE FOR DETAILING PURPOSES ONLY AND SHOULD NOT BE USED FOR CONSTRUCTION UNLESS VERIFIED BY ENGINEER OR CONTRACTOR.

REVISION MARK	REVISION DETAILS	DATE
0	FOR APPROVAL	03/02/2021

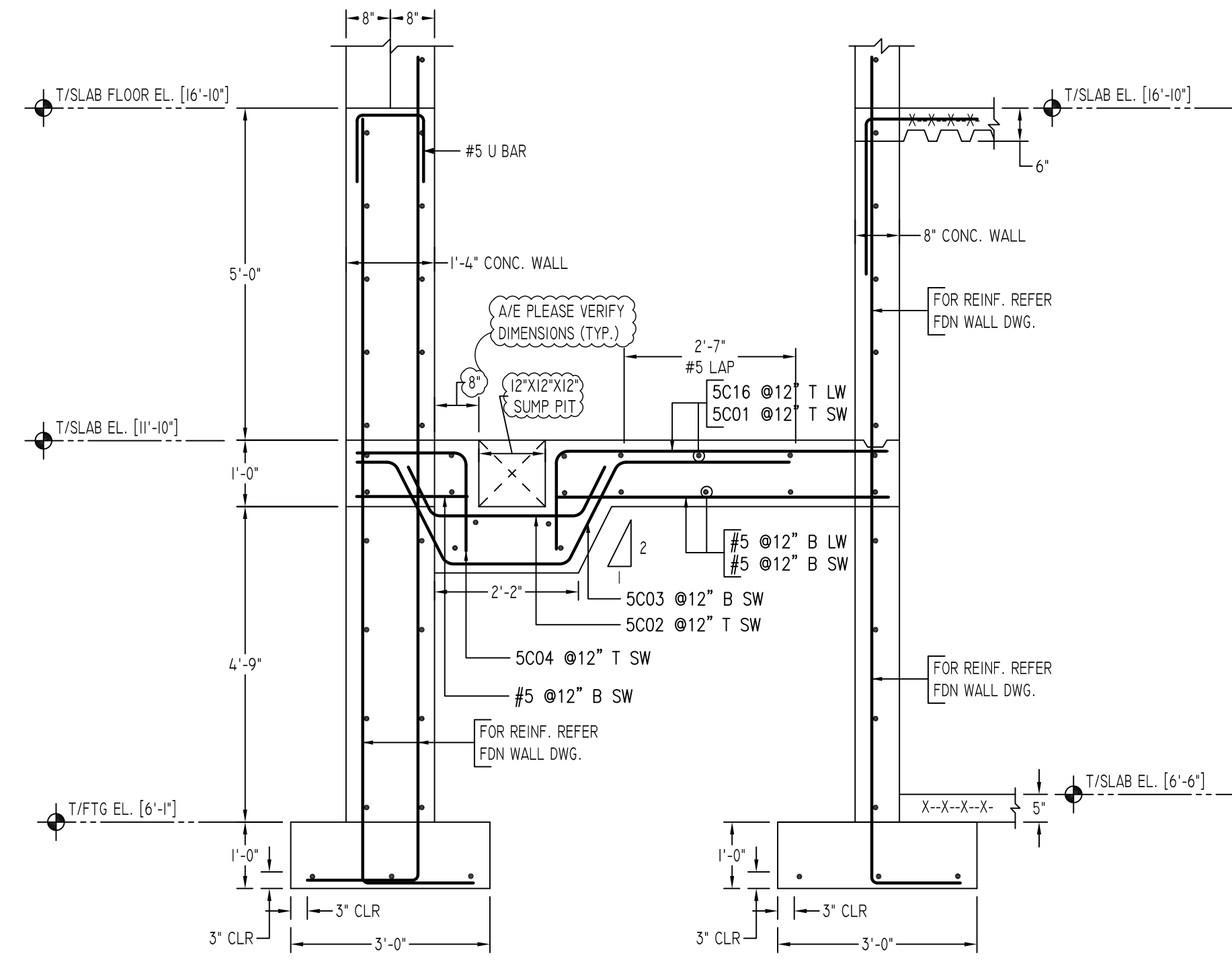
PROJECT FAIRFIELD STATION LOFTS
LOCATION FAIRFIELD, CT 06824
ARCHITECT GRANOFF ARCHITECTS
ENGINEER MICHAEL HORTON ASSOCIATES, INC.
CUSTOMER CONCRETE SUPERSTRUCTURES

DRAWN BY:	DATE:	REVIEWED BY:	JOB NO.:
SKM/MRS	03/02/21	T/L	21024

DRAWING TITLE: FOUNDATION WALLS REINFORCEMENT
DETAILS
DRAWING NO.: RFW-01E

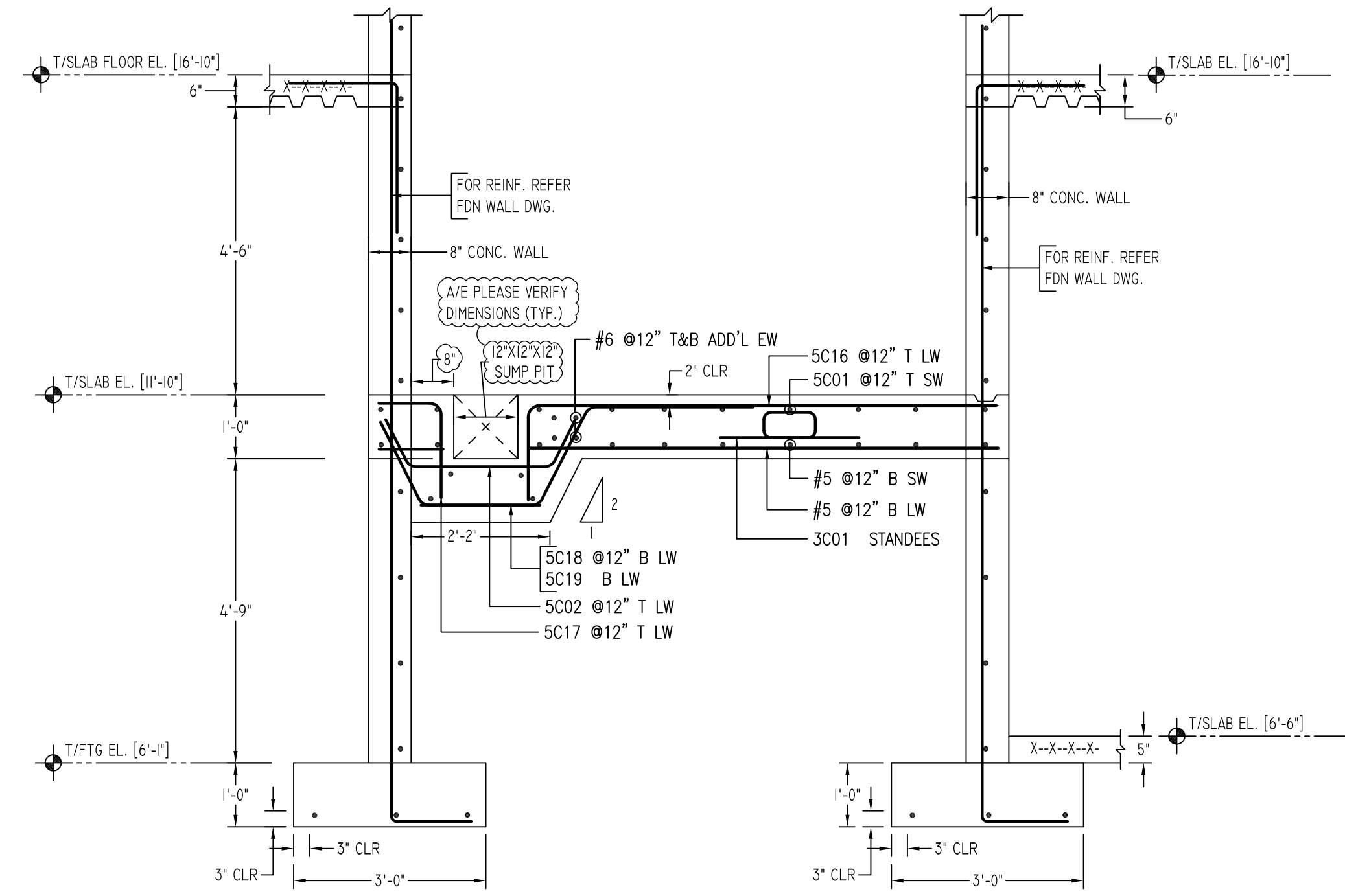
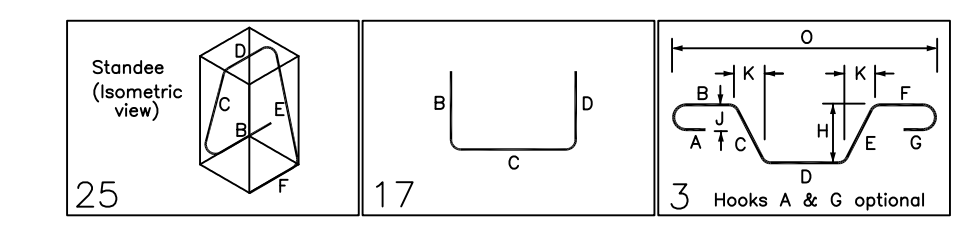


ELEVATOR PIT & MAT SLAB REINFORCEMENT DETAILS
DETAIL-A
 SCALE - 1/2"=1'-0"
 REF: S1.1, S1.2, S3.1, S4.0, S6.0 & S6.1

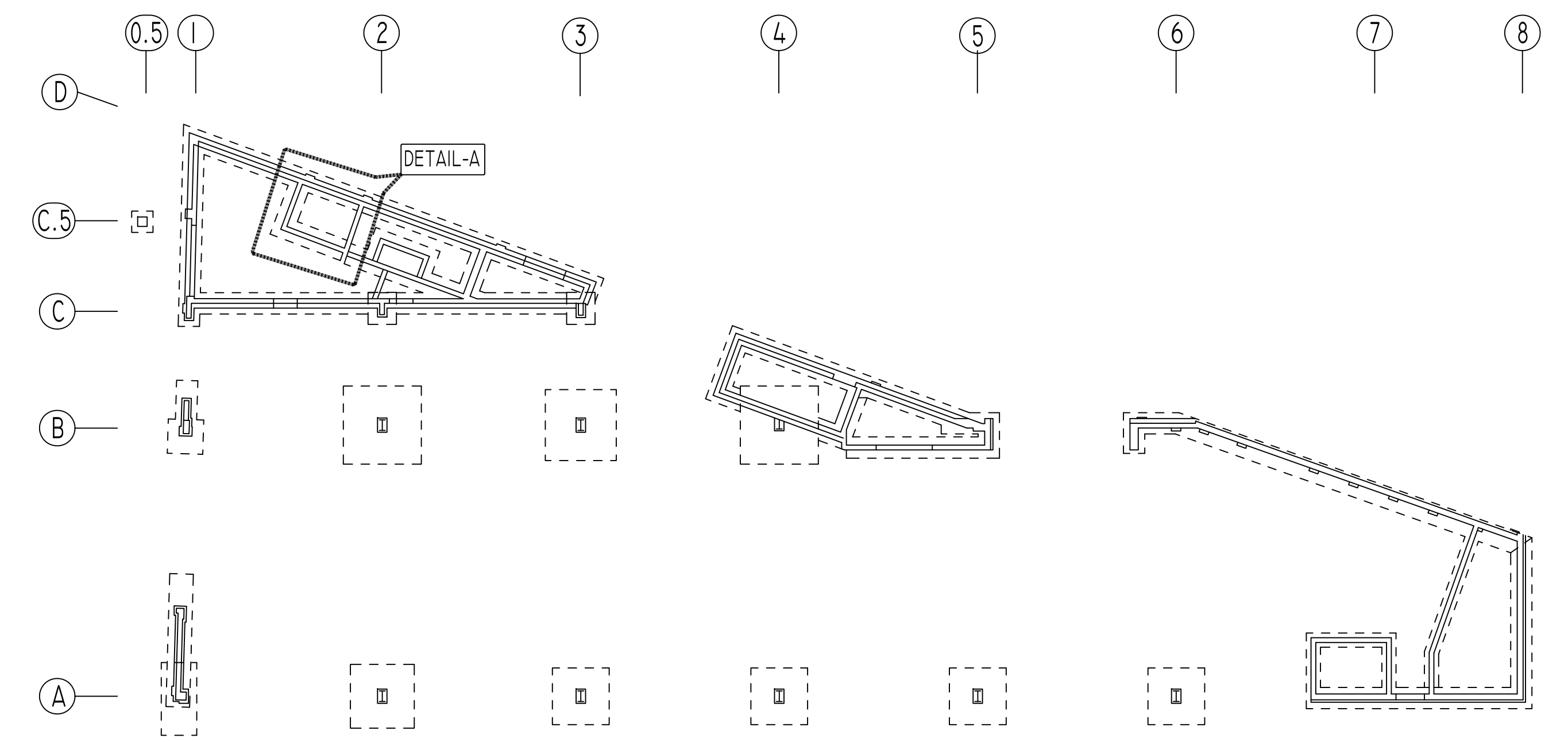


SECTION 9
 SCALE - 1/2"=1'-0"
 REF: S1.1, S1.2, S3.1, S4.0, S6.0 & S6.1

Release Number: RFW-01F		BONDING DETAILS															
Bar Mark	Qty	Size	Total Length	Type	X	Y	Z	W	V	U	T	S	R	Q	P	O	
3001	5	#3	4'-8"	25				1'-6"	0'-5"	0'-10"	0'-5"	1'-6"					
5001	2	#5	6'-6"	17				1'-6"	5'-0"								
5002	4	#5	3'-11"	3				0'-10"	2'-5"	0'-10"				0'-3 K"	2'-10 K"		
5003	2	#5	8'-5 K"	3				0'-6 K"	1'-8 K"	1'-10 K"	1'-8 K"	2'-7"		0'-9 K"	0'-5 K"		
5004	2	#5	3'-2"	17				1'-6"	1'-4"					0'-8 K"	6'-5 K"		
5016	2	#5	8'-10"	17				1'-6"	2'-4"								
5017	2	#5	2'-6"	17				1'-0"	1'-6"								
5018	2	#5	6'-2"	3				2'-7"	1'-8 K"	1'-10 K"				0'-8 K"	5'-2"		
5019	2	#5	3'-3 K"	3				1'-10 K"	1'-5 K"					0'-7 K"	2'-5 K"		



SECTION 8
 SCALE - 1/2"=1'-0"
 REF: S1.1, S1.2, S3.1, S4.0, S6.0 & S6.1



KEY PLAN
 SCALE - N.T.S
 REF: S1.1

TYPE	FOOTING SIZE		REINFORCEMENT EW	REMARK
	LENGTH X WIDTH	DEPTH		
F30	3'-0"X3'-0"	1'-3"	(4)- #5 EACH WAY	-
F40A	4'-6"X4'-0"	1'-3"	(5)- #6 EACH WAY	-
F80	8'-0"X8'-0"	1'-9"	(9)- #6 EACH WAY	-
F90	9'-0"X9'-0"	2'-0"	(12)- #6 EACH WAY	-
F100	10'-0"X10'-0"	2'-3"	(14)- #6 EACH WAY	-
F110	11'-0"X11'-0"	2'-6"	(10)- #8 EACH WAY (12)- #6 TOP EACH WAY	-

TYPICAL REINFORCING BAR CLEARANCE TABLE	
LOCATION	MIN. COVER
FOOTINGS AGAINST EARTH	3" CLR
COLUMNS AND PIERS (VERTICAL REINF.)	2" CLR
WALLS INTERIOR FACE	3/4" CLR
WALLS EXTERIOR FACE (#5 & SMALLER)	1 1/2" CLR
WALLS EXTERIOR FACE (#6 & LARGER)	2" CLR
SLAB INTERIOR FACE (#5 & SMALLER)	3/4" CLR
SLAB EXTERIOR FACE (#6 & LARGER)	1-1/2" CLR

SIZE	4000 PSI	
	TOP	OTHERS
#3	24"	19"
#4	32"	25"
#5	40"	31"
#6	48"	37"
#7	70"	54"
#8	80"	62"
#9	91"	70"
#10	102"	79"
#11	113"	87"

**ALL BARS IN THIS DRAWING
 ASTM A615 GRADE 60
 BLACK UNCOATED**

Abbreviations:
 IF=Inside Face
 OF=Outside Face
 EF=Each Face
 DWS=Dowels
 V=Vertical
 H=Horizontal
 COR=Corner
 SLAB DWS=Slab Dowels
 EW=Each Way
 B=Bottom
 T=Top
 M DWL= Masonry Dowel
 BB=Bond Beam
 ALT: Alternate
 APPROX: Approximate
 ES=Each Side

OPNG=Opening
BAL: Balance
BTW=Between
CJ=Construction Joint
CLR: CLEARANCE
CMU=Concrete Masonry Unit
CONT=Continuous
Elev=Elevation
EMBED=Embedment
SW=Short Way
LW=Long Way
(BL)=Black Bar
(EP)=Epoxy Bar
(GA)=Galvanized
(TB)= Threaded Bar
(CB)= Coupler Bar

NOTICE
 Shortages, improper fabrication or claims for any other reason must be reported to this company within a period of 15 days of delivery. This company reserves the right to field inspect prior to replacement or reconditioning of nonconforming material, and will not honor charges for work done in the field without specific authorization from this company.

REINFORCING STEEL PLACING DRAWINGS ONLY USE IN CONJUNCTION WITH CONTRACT DRAWINGS & SPECIFICATIONS. ELEVATIONS & DIMENSIONS SHOWN ON THIS DRAWING ARE FOR DETAILING PURPOSES ONLY AND SHOULD NOT BE USED FOR CONSTRUCTION UNLESS VERIFIED BY ENGINEER OR CONTRACTOR.

REVISION MARK	REVISION DETAILS	DATE
0	FOR APPROVAL	03/02/2021

PROJECT	FAIRFIELD STATION LOFTS
LOCATION	FAIRFIELD, CT 06824
ARCHITECT	GRANOFF ARCHITECTS
ENGINEER	MICHAEL HORTON ASSOCIATES, INC.
CUSTOMER	CONCRETE SUPERSTRUCTURES
DRAWN BY:	RAJ/MRS
DATE:	03/02/21
REVIEWED BY:	T/L
JOB NO.:	21024
DRAWING TITLE:	ELEVATOR PIT & MAT SLAB REINFORCEMENT DETAILS
DRAWING NO.:	RFW-01F