

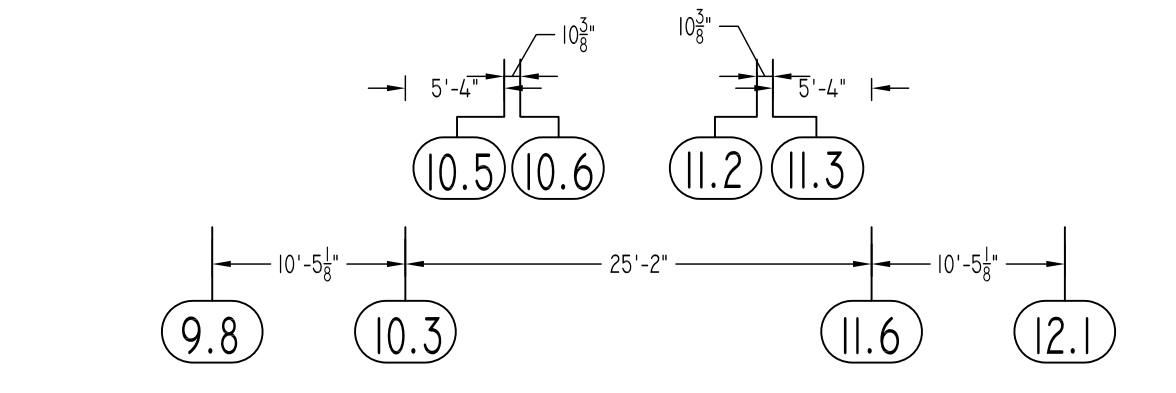
FOOTING SCHEDULE		
TYPE	SIZE	REINFORCEMENT
F2.5	2'-6"x2'-6"x1'-0"	(3)-#4 B EW
F4	4'-0"x4'-0"x1'-0"	(4)-#4 B EW
F6	6'-0"x6'-0"x1'-2"	(6)-#5 B EW
F7	7'-0"x7'-0"x1'-2"	(7)-#5 B EW
F8	8'-0"x8'-0"x1'-4"	(8)-#5 B EW
F9	9'-0"x9'-0"x1'-8"	(9)-#6 B EW
F10	10'-0"x10'-0"x1'-8"	(10)-#6 B EW
F11	11'-0"x11'-0"x1'-10"	(11)-#7 B EW
F12	12'-0"x12'-0"x2'-0"	(12)-#7 B EW
F13	16'-0"x16'-0"x2'-6"	(13)-#8 B EW
F16	6'-0"x11'-0"x1'-8"	(8)-#8 B CONT. #7 @10" O.C B TRANS.

PIER SCHEDULE		
TYPE	SIZE	REINFORCEMENT
		VERTICAL TIES
P1	1'-8"x1'-8"	(8)-#5 D/V #3 @10" O.C TIES
P2	2'-0"x2'-0"	(8)-#6 D/V #4 @12" O.C TIES

FOR FOOTING/PIER REINFORCEMENT DETAILS REFER DRAWING RF-01A & RF-01B

TYPICAL REINFORCING BAR CLEARANCE TABLE		
LOCATION	MIN. COVER	
FOR FOOTING BOTTOM & SIDE	3" CLR	
FOR PIER SIDE	1 1/2" CLR	
FOR PIER TOP	2" CLR	

**ALL BARS IN THIS DRAWING
ASTM A615 GRADE 60
BLACK UNCOATED**



SPREAD FOOTING & PIER REINFORCEMENT DETAILS
SCALE: 3/32"=1'-0"
REF: S1.1

Abbreviations:
 I.F.=Inside Face
 O.F.=Outside Face
 E.F.=Each Face
 DWL=Dowel
 V=Vertical
 H=Horizontal
 C.B.=Corner Bar
 S.DWL=Slab Dowel
 E.W.=Each Way
 B/BOT=Bottom
 T=Top
 MDWL=Masonry Dowel
 B.B.=Bond Beam
 ALT.=Alternate
 Approx.=Approximate
 OPNG=Opening
 BAL=Balance
 BTW=Between
 C.J.=Construction Joint
 CLR=CLEARANCE
 CMU=Concrete Masonry Unit
 CONT.=Continuous
 EA=Each
 Elev.=Elevation
 EMB=Embedment
 SW=Short Way
 LW=Long Way
 (BL)=Black Bar
 (EP)=Epoxy Bar
 (GA)=Galvanized

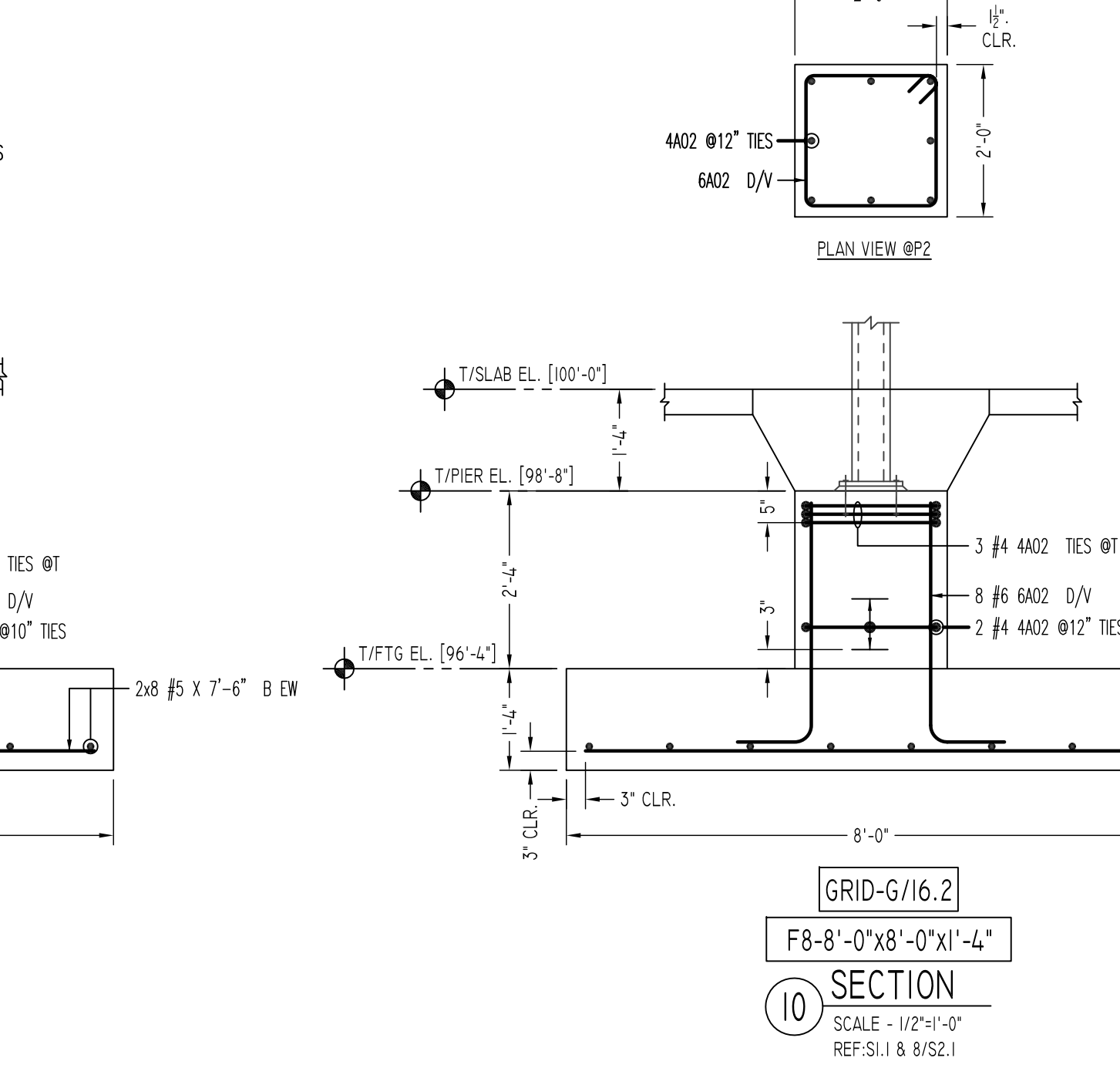
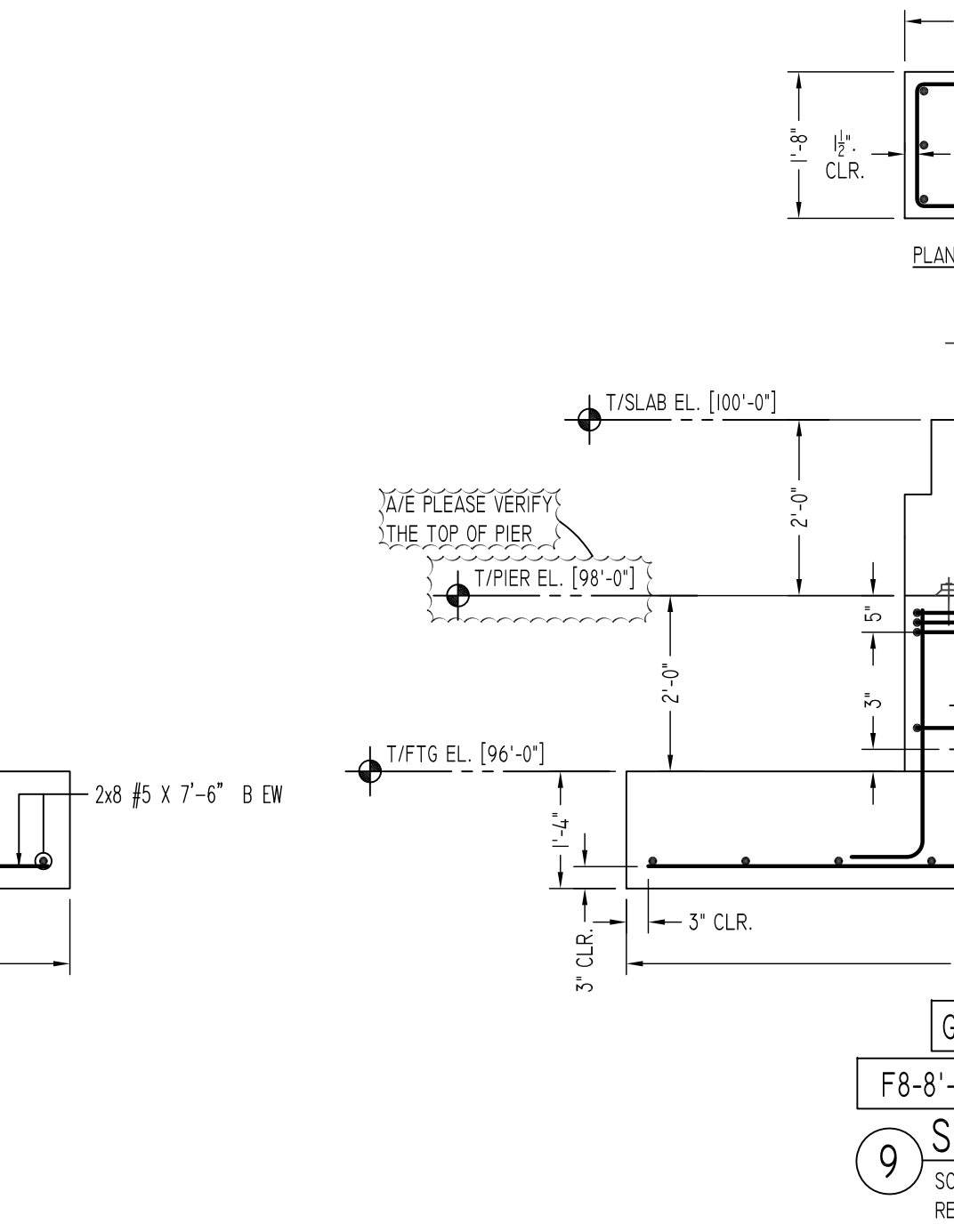
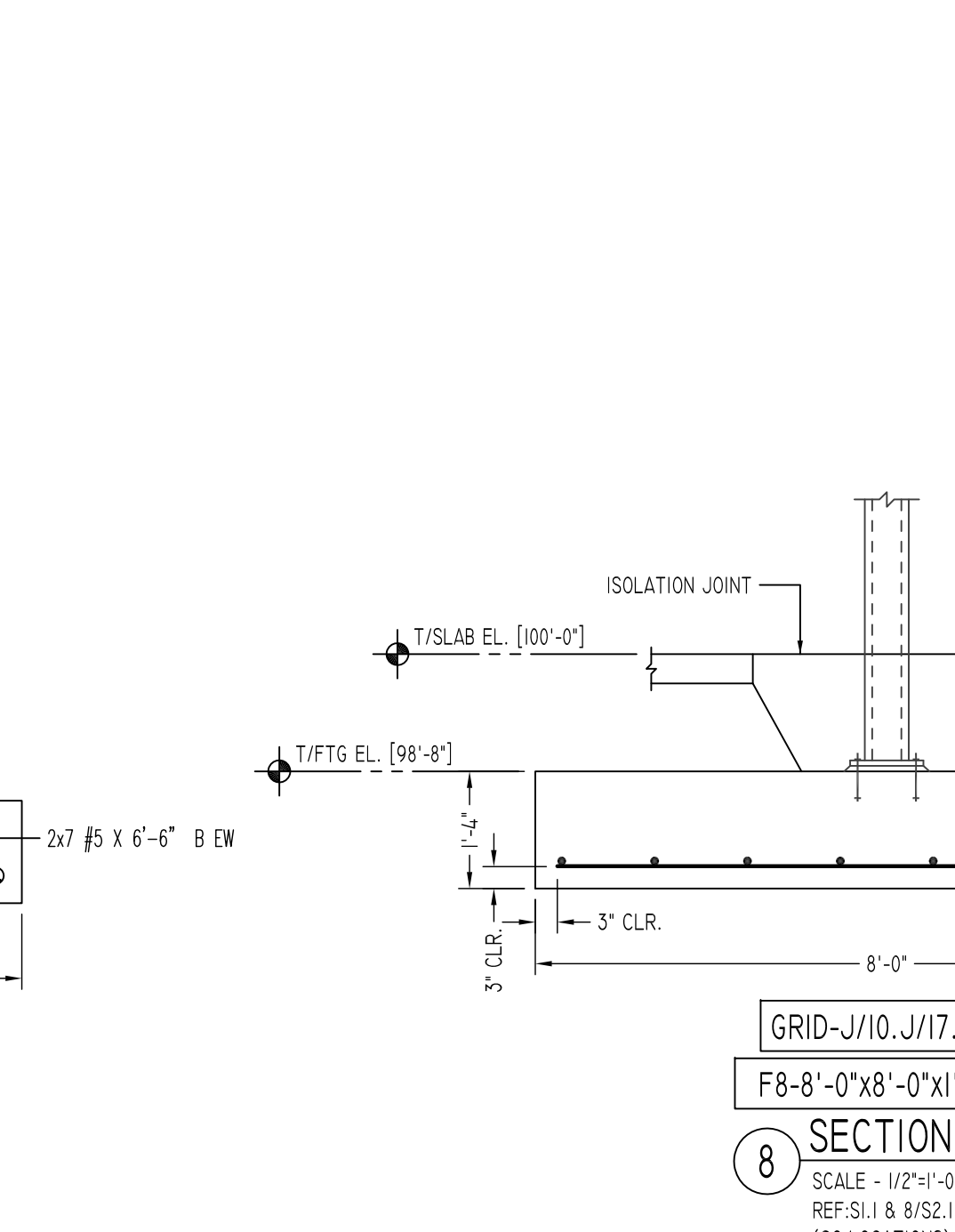
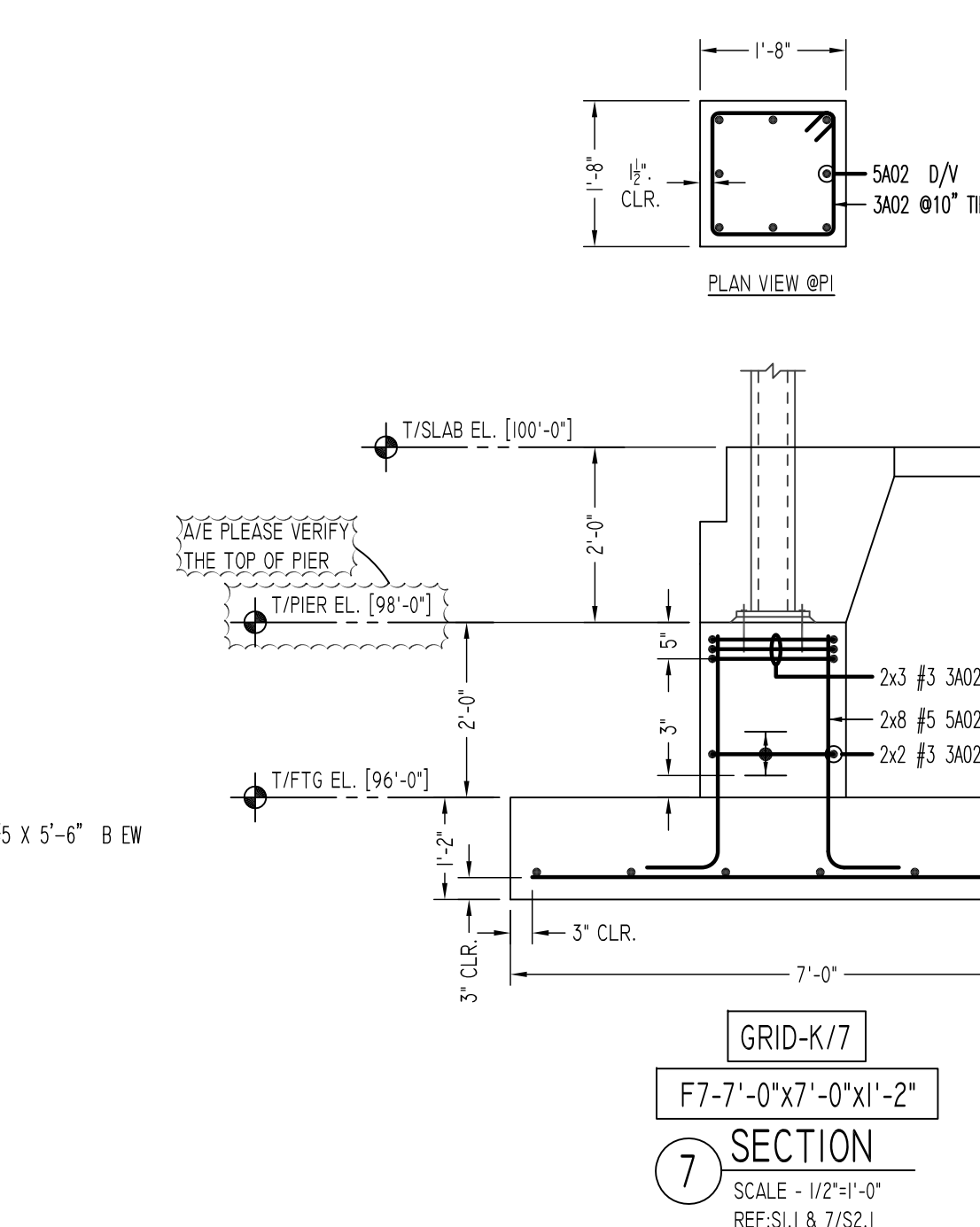
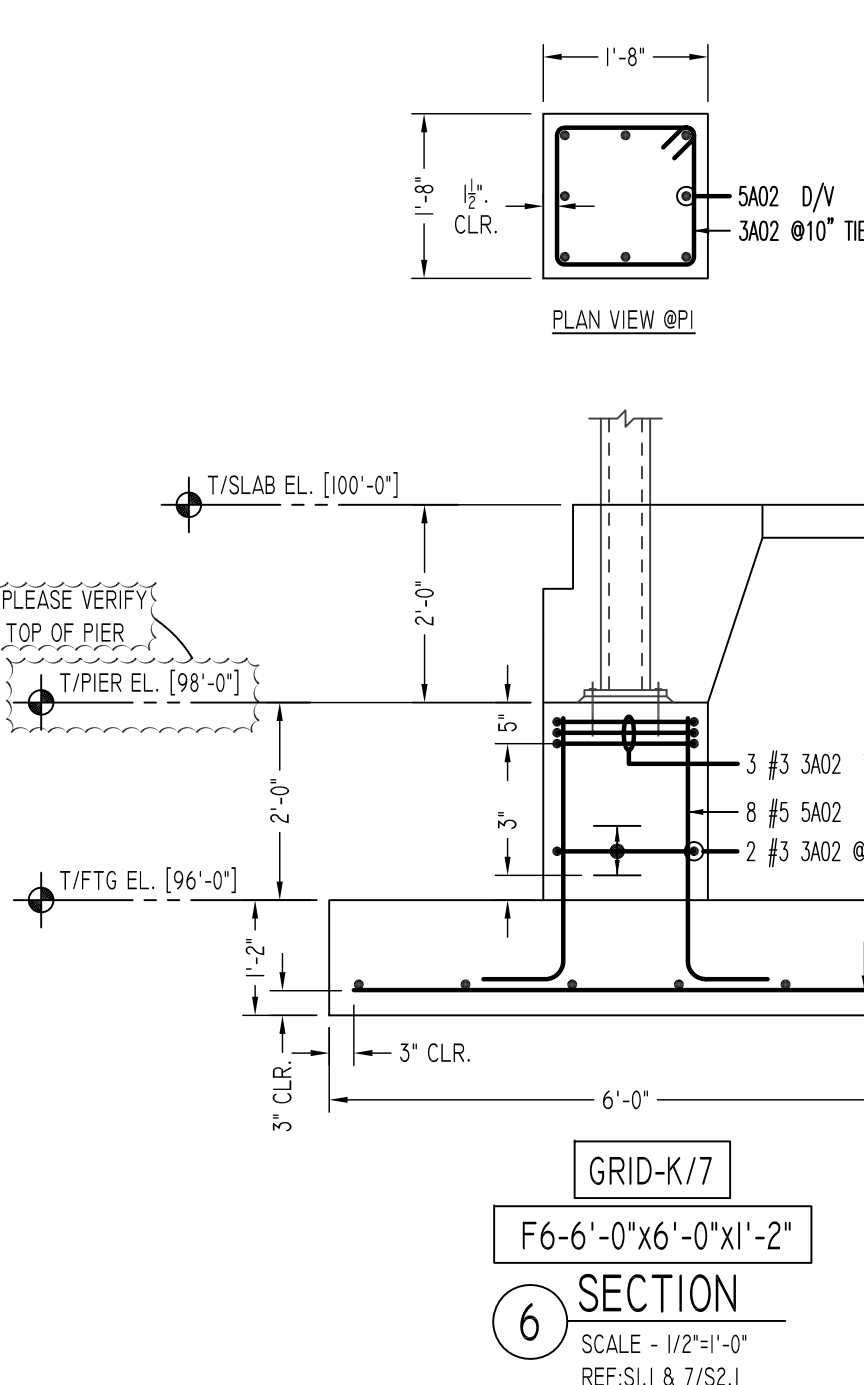
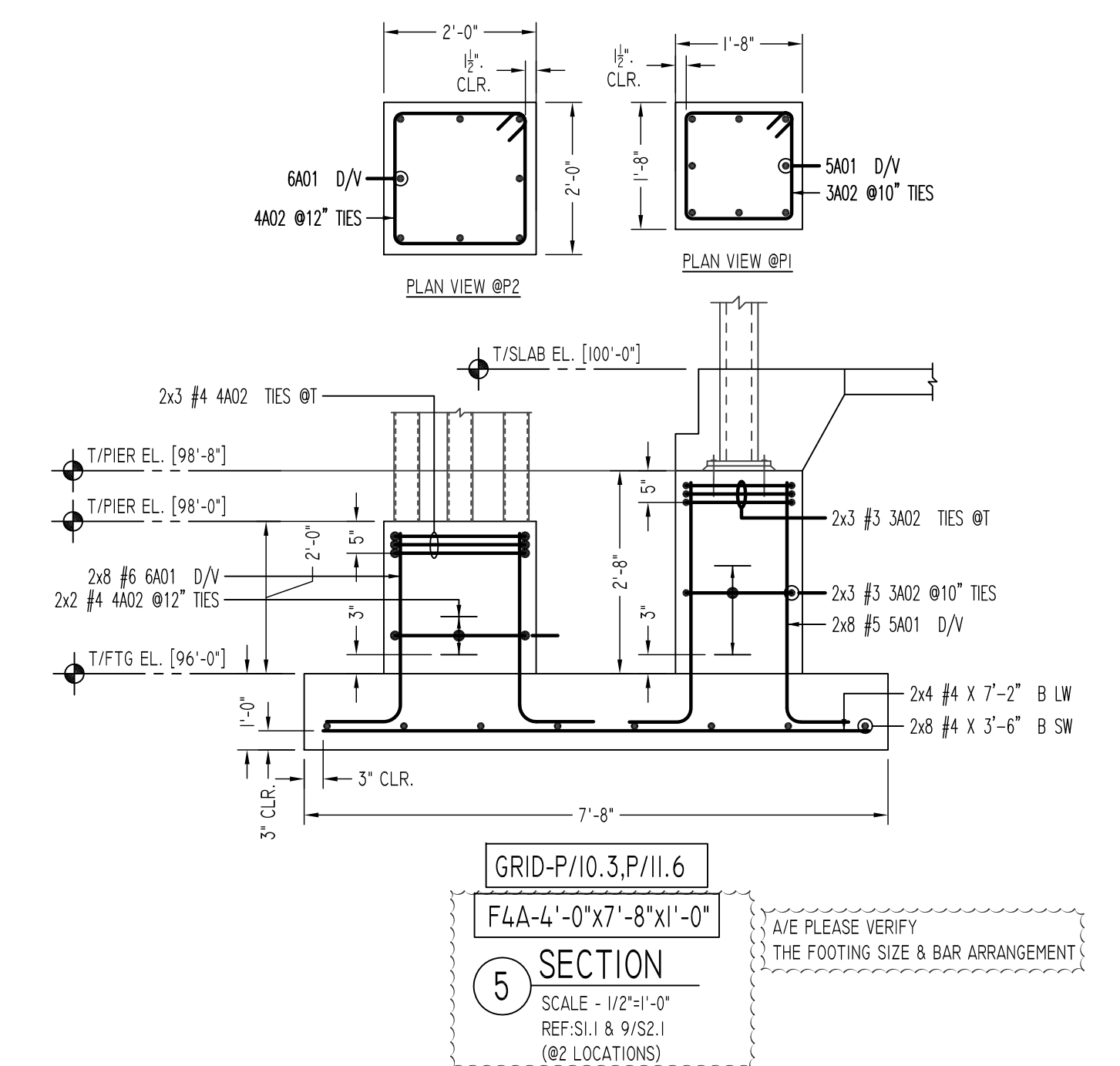
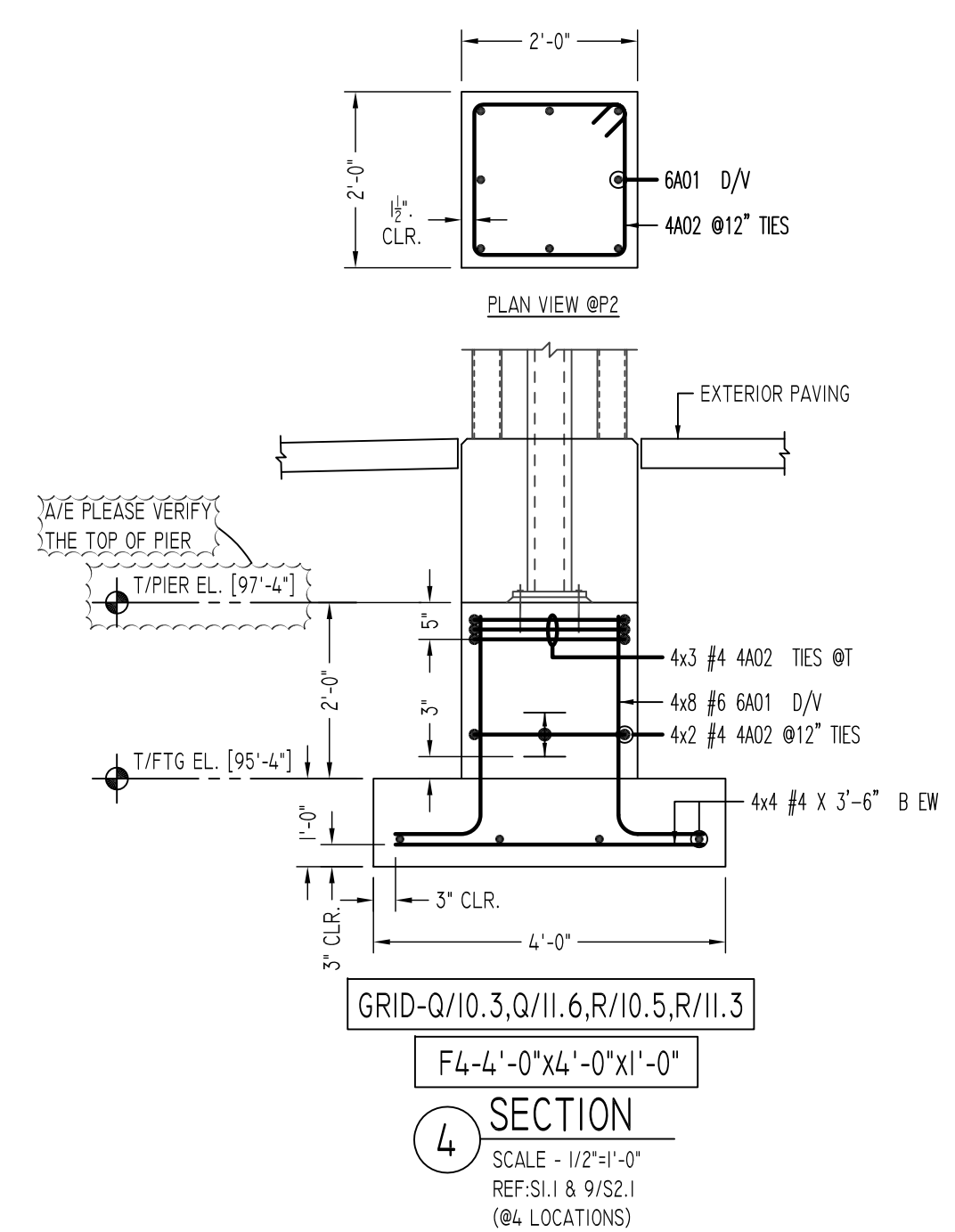
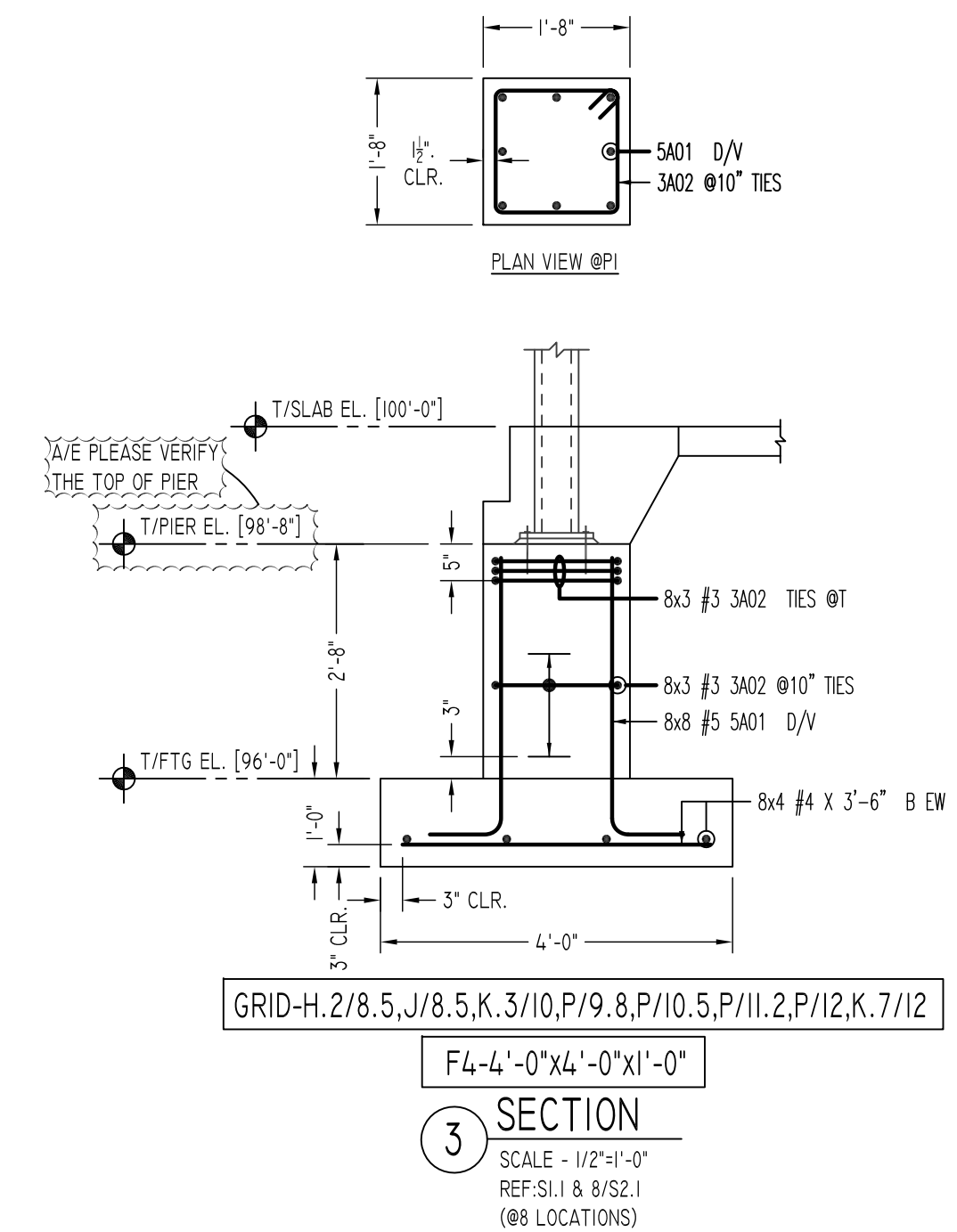
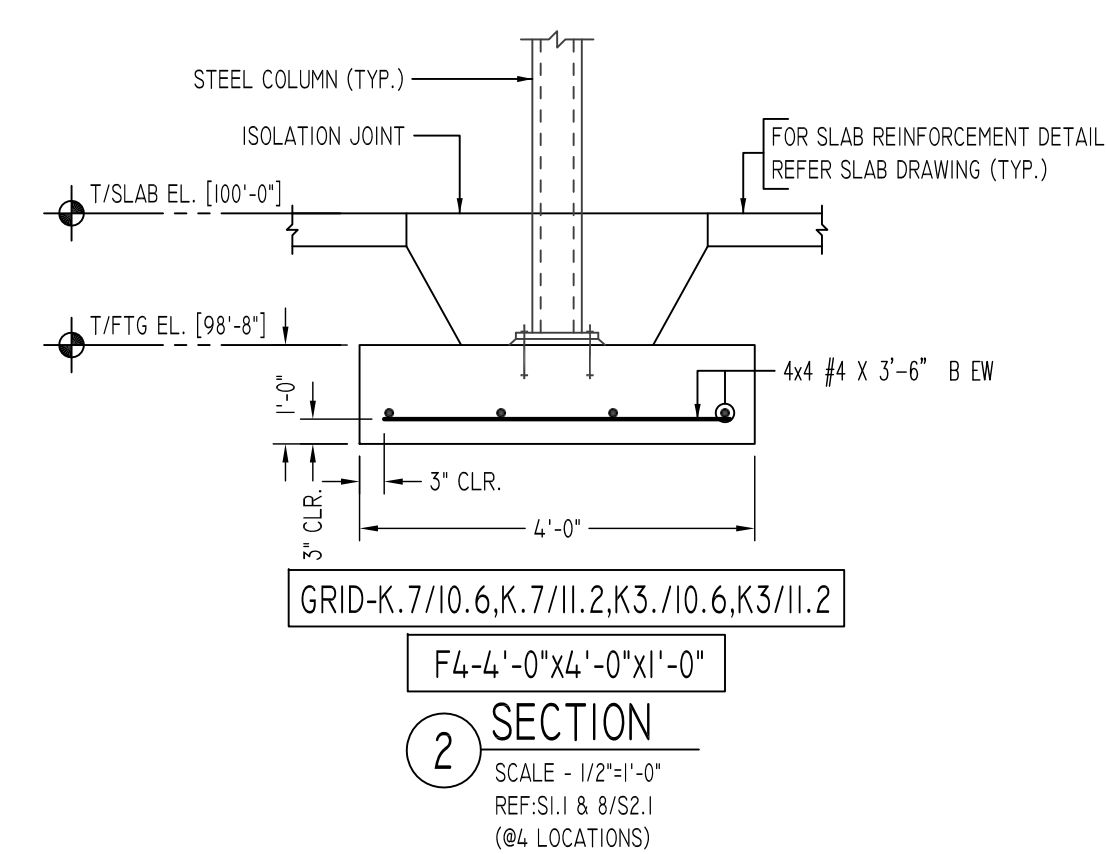
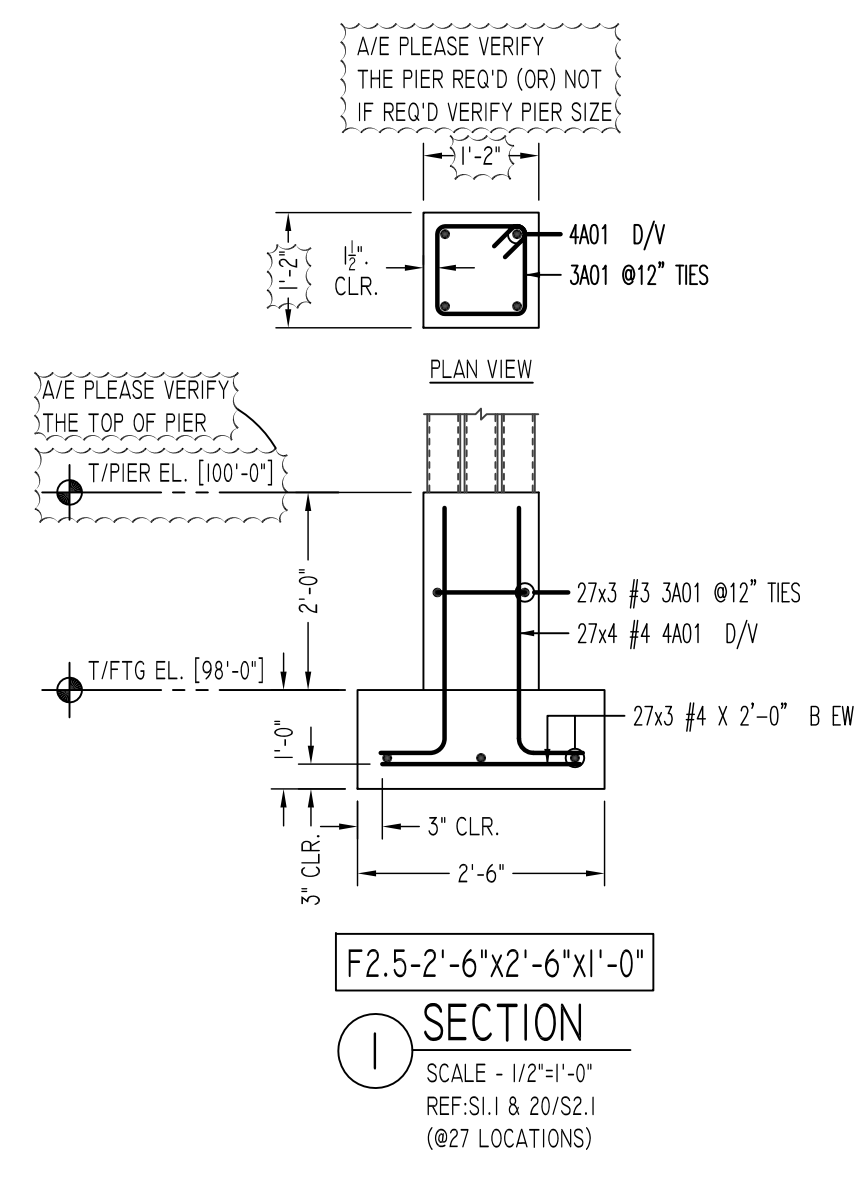
NOTICE

Shortages, improper fabrication or claims for any other reason must be reported to this company within a period of 15 days of delivery. This company reserves the right to field inspect prior to replacement or reconditioning of nonconforming material, and will not honor charges for work done in the field without specific authorization from this company.

REINFORCING STEEL PLACING DRAWINGS ONLY USE IN CONJUNCTION WITH CONTRACT DRAWINGS & SPECIFICATIONS. ELEVATIONS & DIMENSIONS SHOWN ON THIS DRAWING ARE FOR DETAILING PURPOSES ONLY AND SHOULD NOT BE USED FOR CONSTRUCTION UNLESS VERIFIED BY ENGINEER OR CONTRACTOR.

REVISION MARK	REVISION DETAILS	DATE
0	FOR APPROVAL	03/24/2022

PROJECT	RESIDENCE INN, MARRIOTT HYDE PARK		
LOCATION	HYDE PARK, NEW YORK		
ARCHITECT	ZHA ARCHITECTS, PC		
ENGINEER	EHLERT/BRYAN, INC.		
CUSTOMER	PC CONSTRUCTION		
DRAWN BY:	RTP/MRS	DATE:	03/24/22
REVIEWED BY:	T/L	JOB NO.:	22015
DRAWING TITLE:	SPREAD FOOTING/PIER REINFORCEMENT DETAILS		DRAWING NO.:
			RF-01



Rebar Number: RF-01A

Bar Mark	Qty	Size	Total Length	Type	X	Y	Z	W	V	U	T	S	R	Q	P	O	N	M	L	K	J	I	H	G	F	E	D	C	B	A
3401	81	#3	4'-4 1/2"	T1	0'-4 1/4"	0'-11"	0'-11"	0'-11"	0'-11"																					
3402	81	#3	4'-4 1/2"	T1	0'-4 1/4"	1'-5"	0'-11"	1'-5"	0'-11"																					
4401	108	#4	3'-2"	2	0'-8"	2'-6"																								
4402	33	#4	7'-9"	T1	0'-4 1/4"	1'-9"	1'-9"	1'-9"	1'-9"																					
5401	80	#5	4'-0"	2	0'-10"	3'-2"																								
5402	24	#5	3'-6"	2	0'-10"	2'-8"																								
5403	16	#5	3'-8"	2	0'-10"	2'-10"																								
6401	48	#6	3'-6"	2	1'-0"	2'-8"																								
6402	8	#6	4'-2"	2	1'-0"	3'-2"																								

FOOTING SCHEDULE

TYPE	SIZE	REINFORCEMENT
F2.5	2'-6"x2'-6"x1'-0"	(3)-#4 B EW
F4	4'-0"x4'-0"x1'-0"	(4)-#4 B EW
F6	6'-0"x6'-0"x1'-2"	(6)-#5 B EW
F7	7'-0"x7'-0"x1'-2"	(7)-#5 B EW
F8	8'-0"x8'-0"x1'-4"	(8)-#5 B EW
F9	9'-0"x9'-0"x1'-8"	(9)-#6 B EW
F10	10'-0"x10'-0"x1'-8"	(10)-#6 B EW
F11	11'-0"x11'-0"x1'-10"	(8)-#7 B EW
F12	12'-0"x12'-0"x2'-0"	(12)-#7 B EW
F13	16'-0"x16'-0"x2'-6"	(13)-#8 B EW
F16	6'-0"x11'-0"x1'-8"	(8)-#8 B CONT./#7 Ø10" O.C B TRANS.

PIER SCHEDULE

TYPE	SIZE	REINFORCEMENT
P1	1'-8"x1'-8"	(8)-#5 D/V (3) Ø10" O.C TIES
P2	2'-0"x2'-0"	(8)-#6 D/V (4) Ø12" O.C TIES

**ALL BARS IN THIS DRAWING
ASTM A615 GRADE 60
BLACK UNCOATED**

**FOR FOOTING/PIER REINFORCEMENT DETAILS
REFER DRAWING RF-01A & RF-01B**

LOCATION	MIN. COVER
FOR FOOTING BOTTOM & SIDE	3" CLR
FOR PIER SIDE	1 1/2" CLR
FOR PIER TOP	2" CLR

Abbreviations:
 I.F.=Inside Face
 O.F.=Outside Face
 E.F.=Each Face
 DWL=Dowel
 V=Vertical
 H=Horizontal
 C.B.=Corner Bar
 S.DWL.=Slab Dowel
 E.W.=Each Way
 B/BOT.=Bottom
 T=Top
 MDWL.=Masonry Dowel
 B.B.=Bond Beam
 ALT.=Alternate
 Approx.=Approximate

OPNG=Opening
 BAL.=Balance
 BTW.=Between
 CJ.=Construction Joint
 CLR.=CLEARANCE
 CMU.=Concrete Masonry Unit
 CONT.=Continuous
 EA.=Each
 Elev.=Elevation
 EMB.=Embedment
 SW.=Short Way
 LW.=Long Way
 (BL)=Black Bar
 (EP)=Epoxy Bar
 (GA)=Galvanized

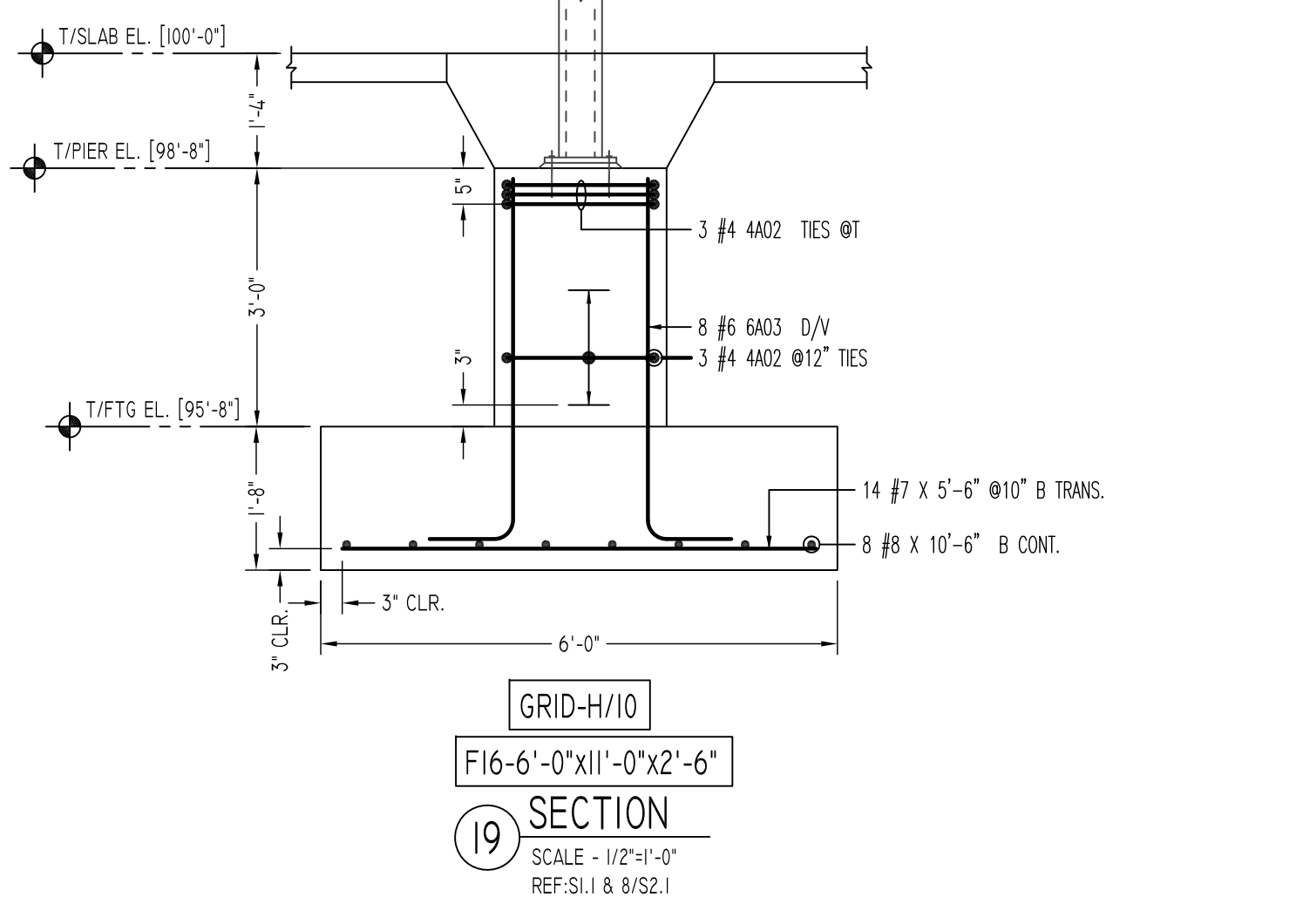
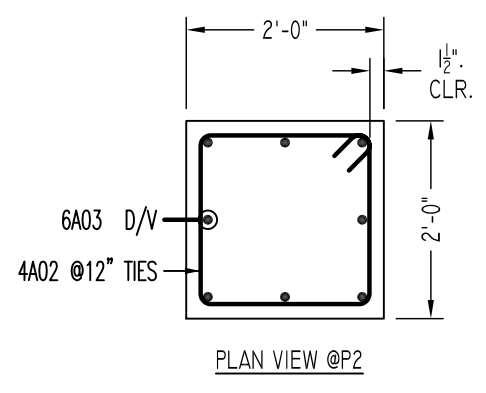
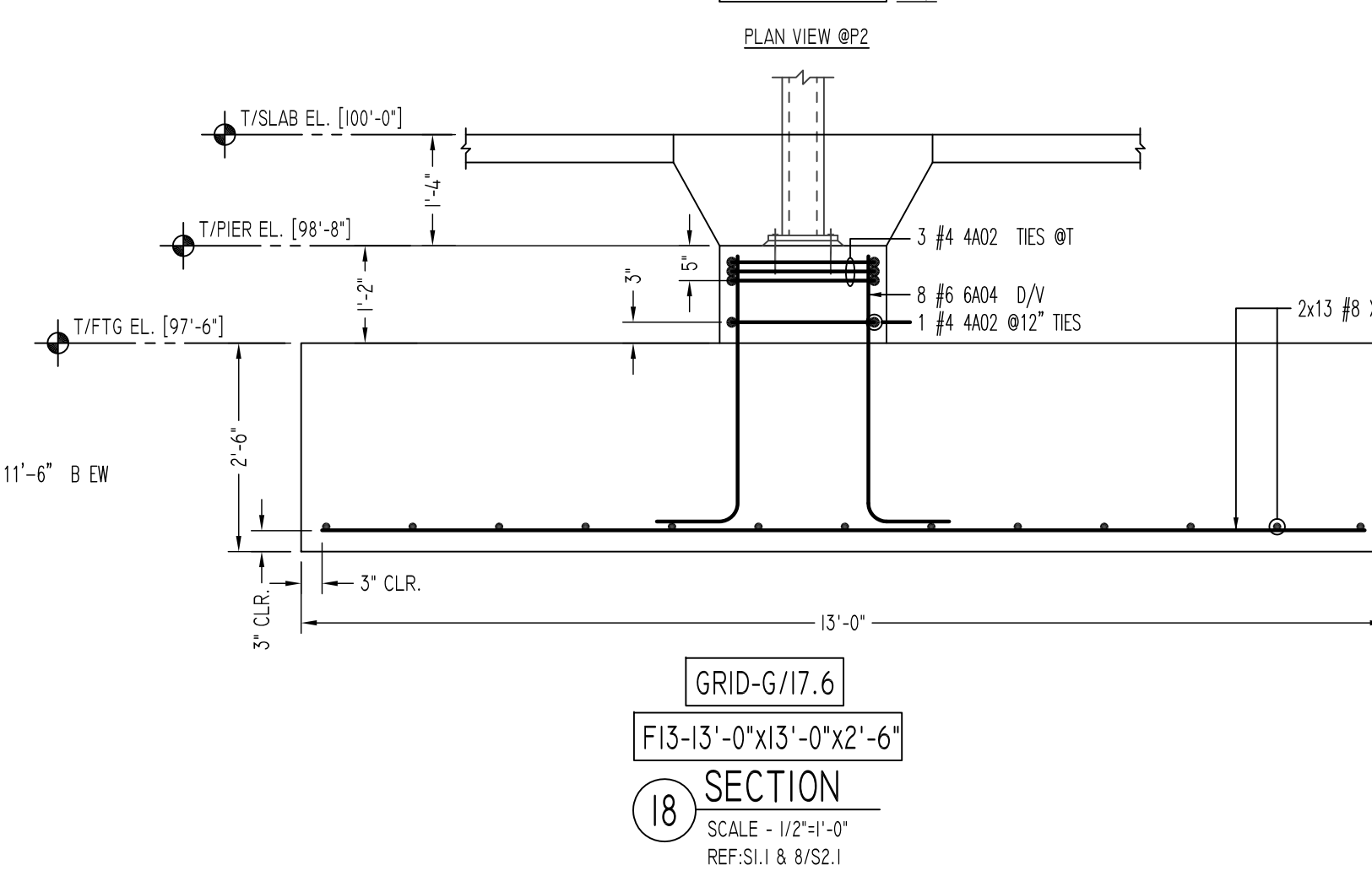
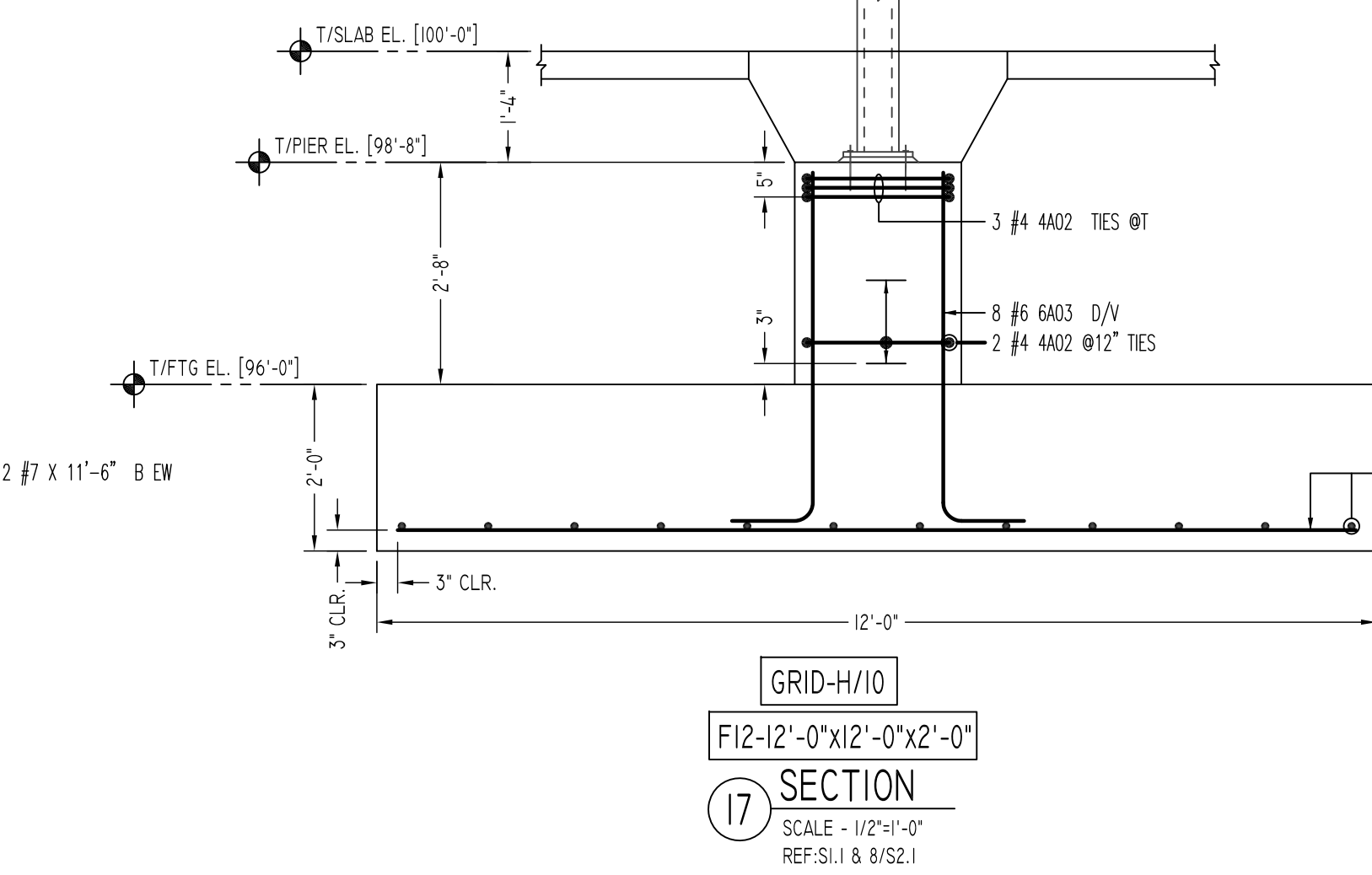
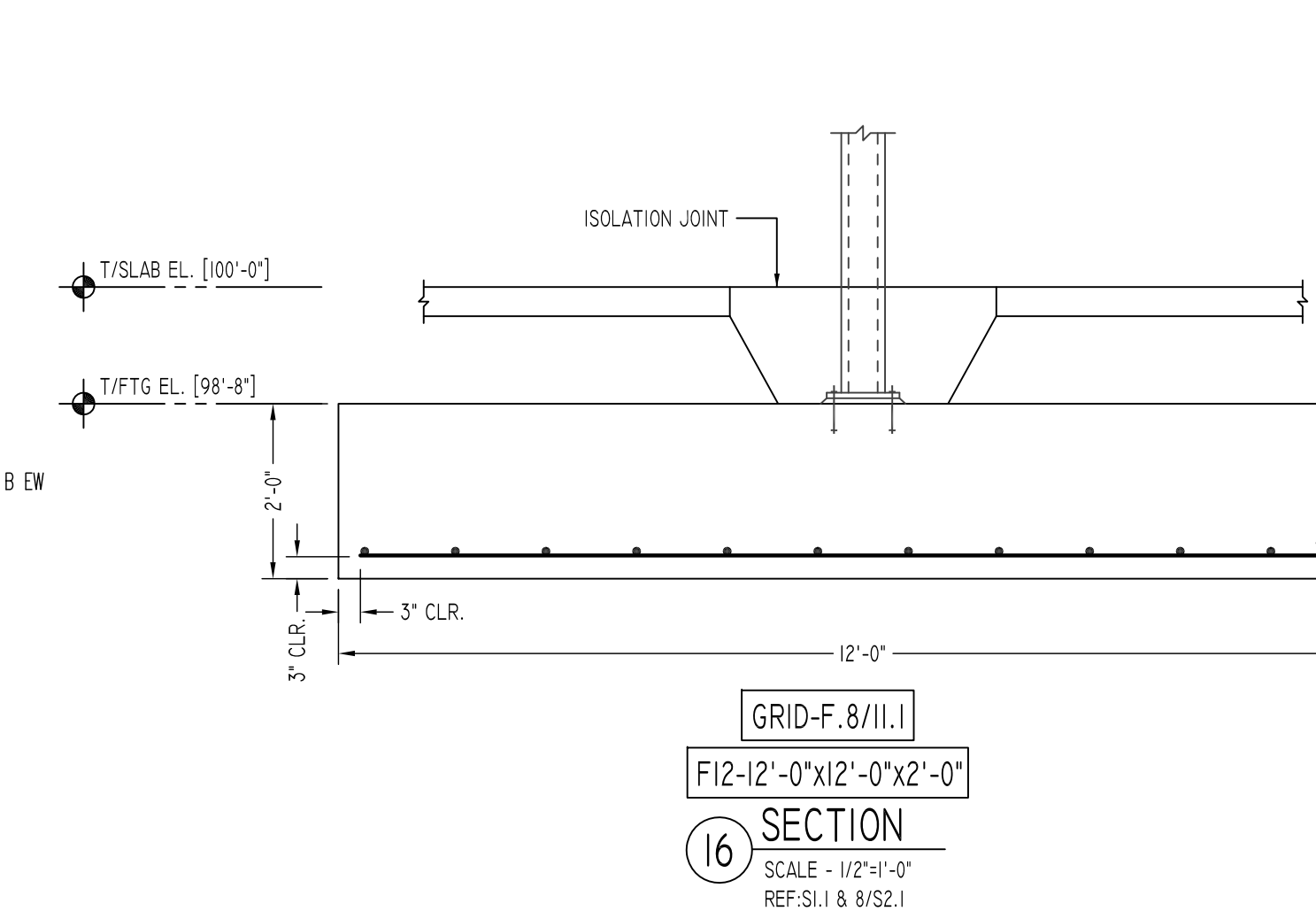
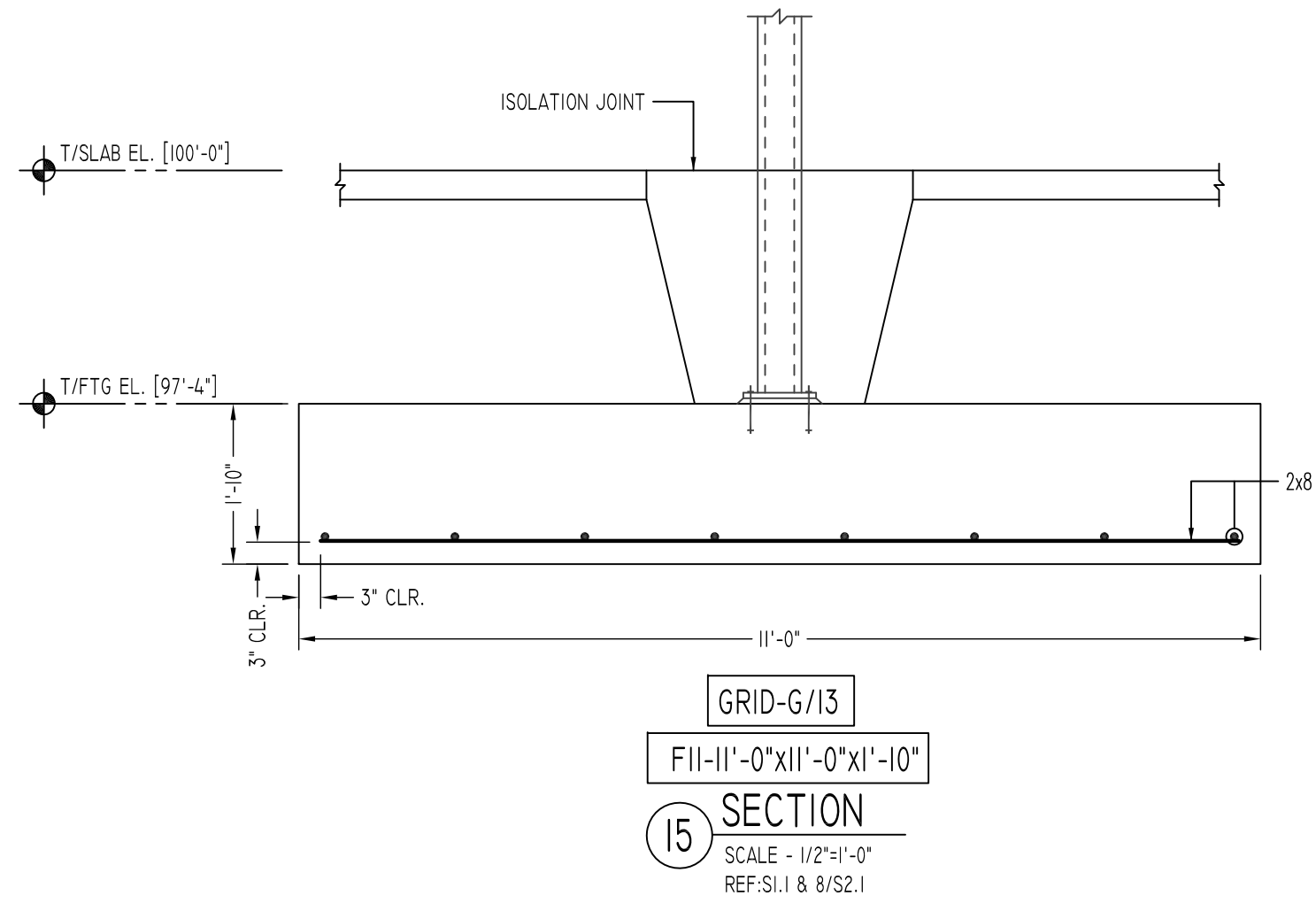
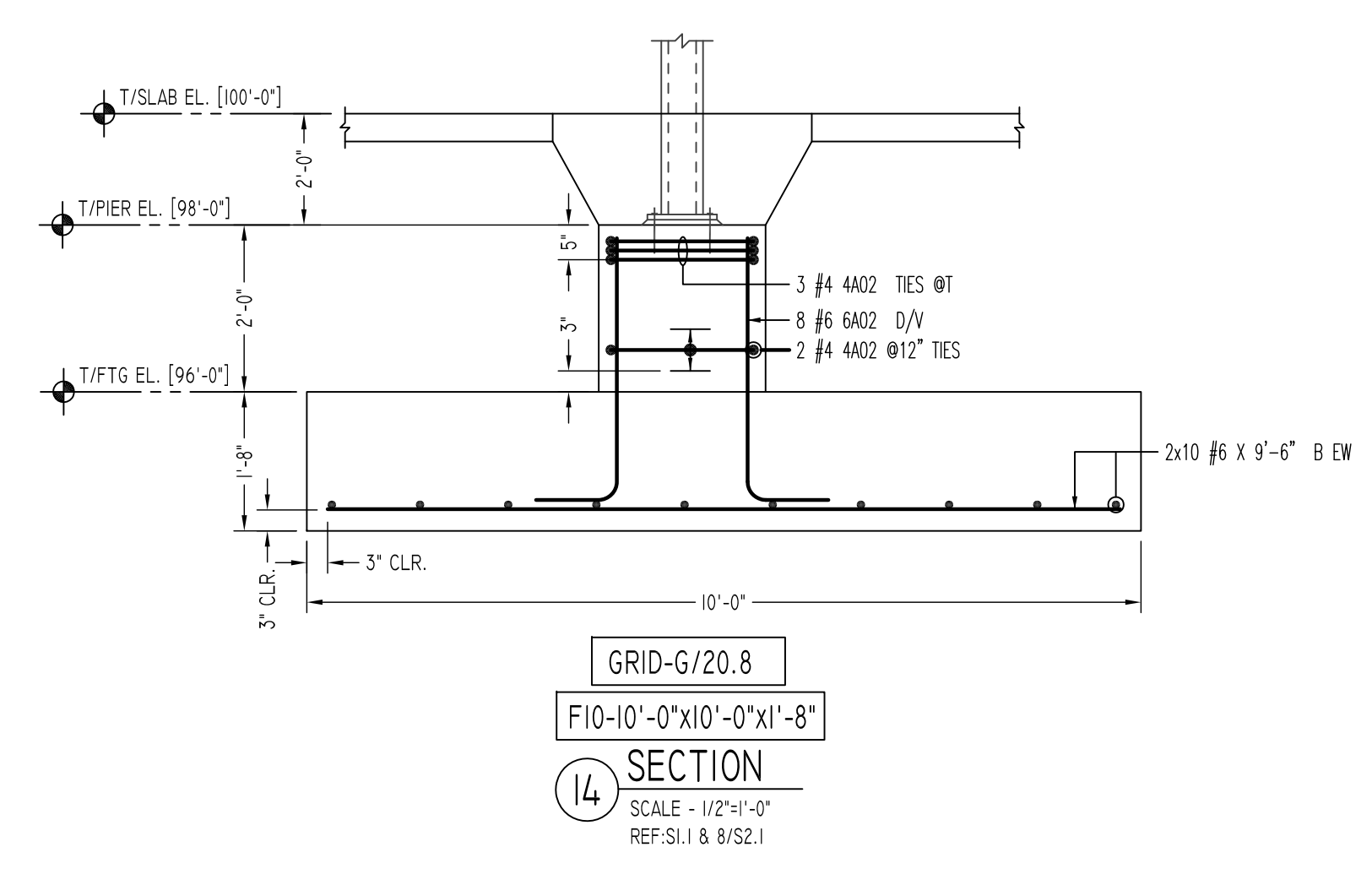
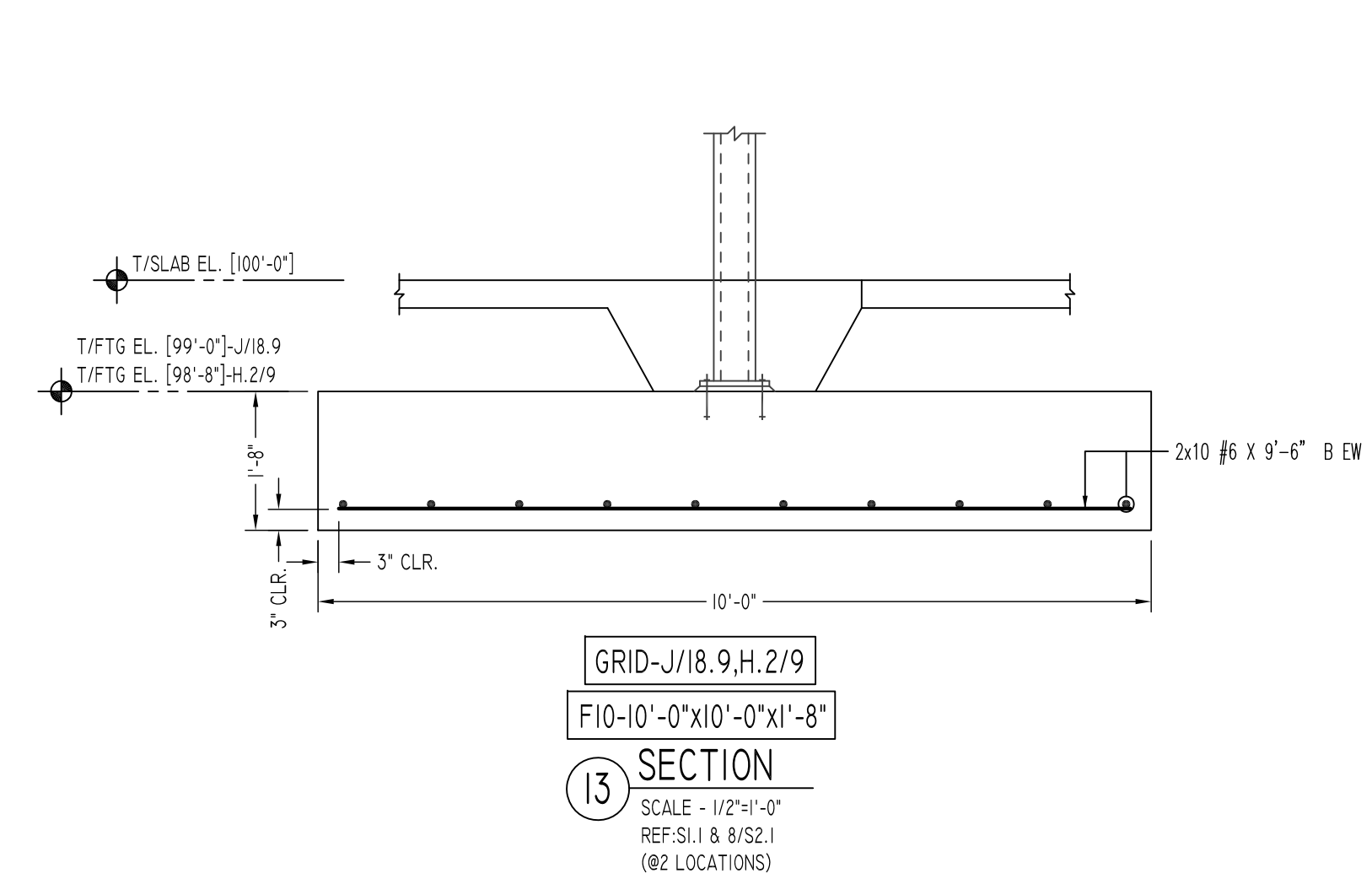
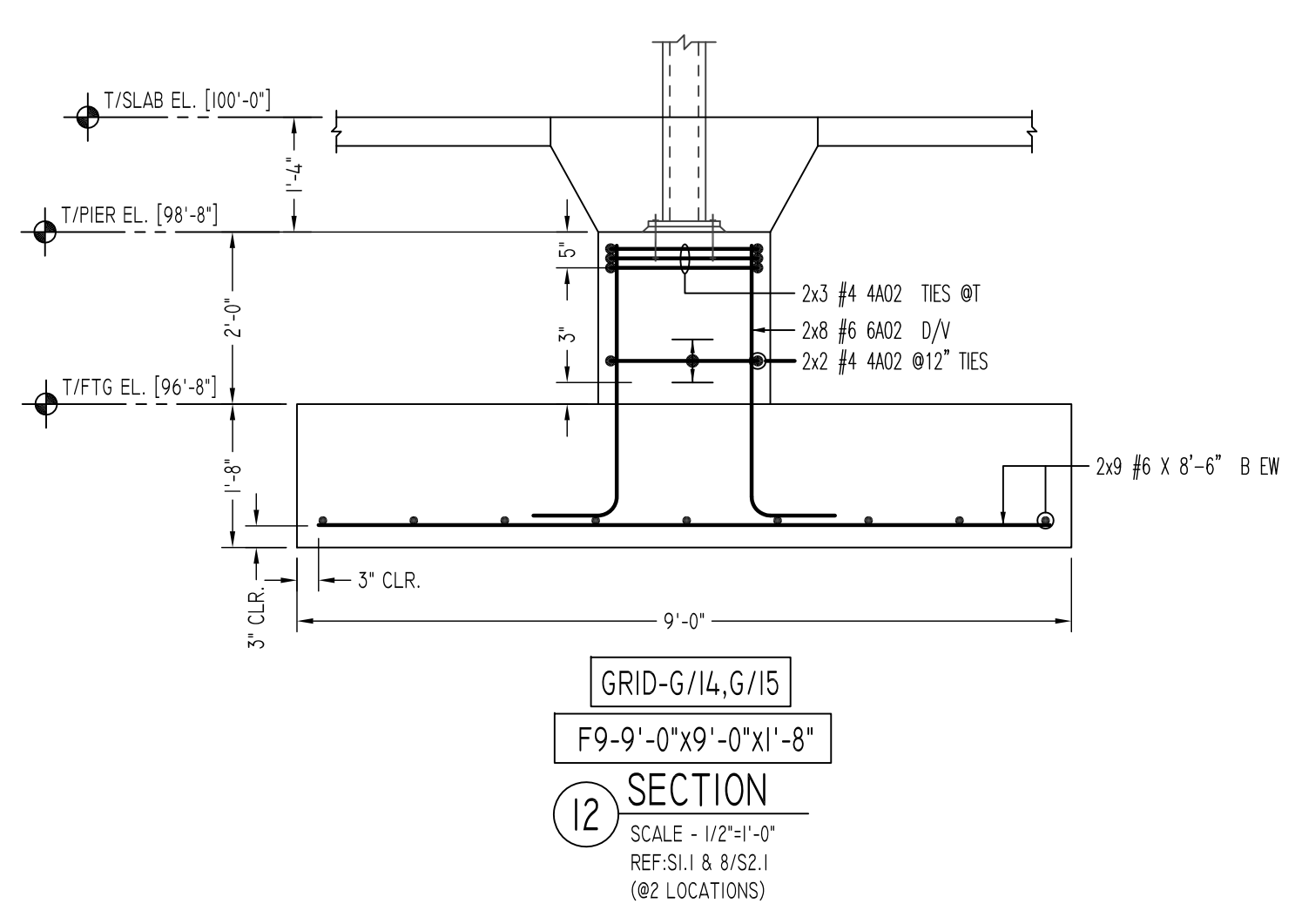
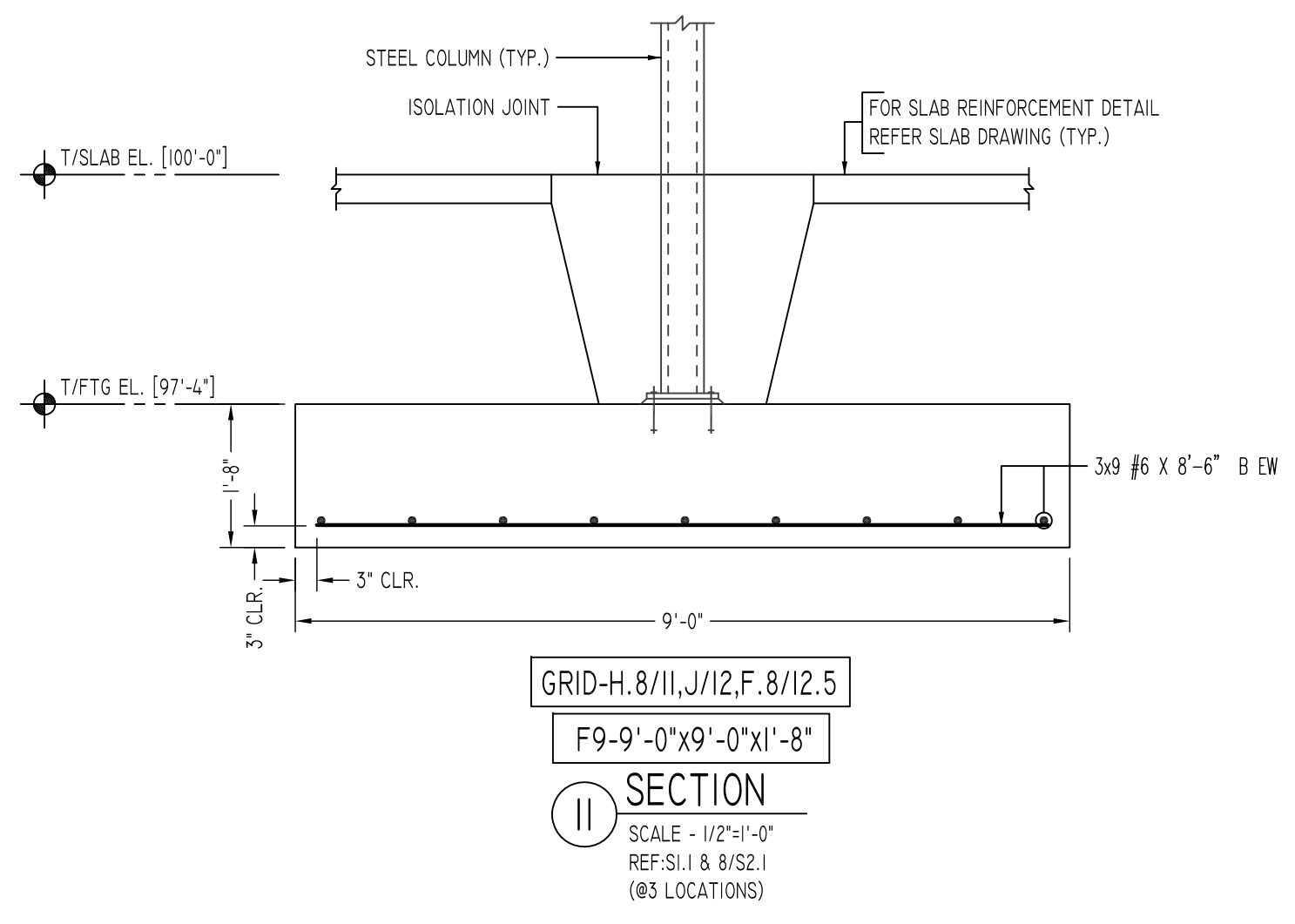
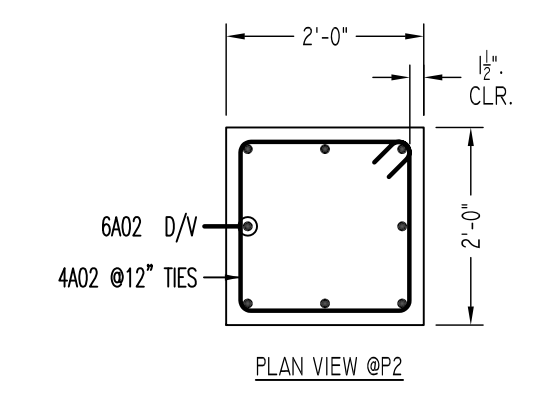
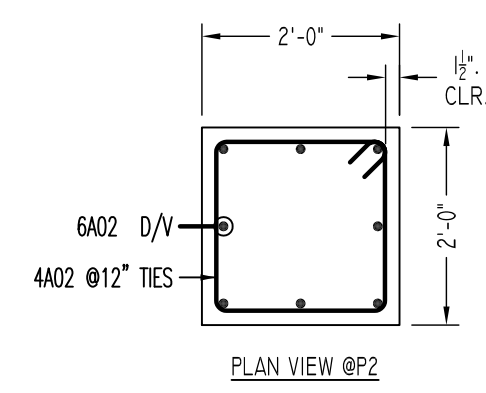
NOTICE

Shortages, improper fabrication or claims for any other reason must be reported to this company within a period of 15 days of delivery. This company reserves the right to field inspect prior to replacement or reconditioning of nonconforming material, and will not honor charges for work done in the field without specific authorization from this company.

REINFORCING STEEL PLACING DRAWINGS ONLY USE IN CONJUNCTION WITH CONTRACT DRAWINGS & SPECIFICATIONS. ELEVATIONS & DIMENSIONS SHOWN ON THIS DRAWING ARE FOR DETAILING PURPOSES ONLY AND SHOULD NOT BE USED FOR CONSTRUCTION UNLESS VERIFIED BY ENGINEER OR CONTRACTOR.

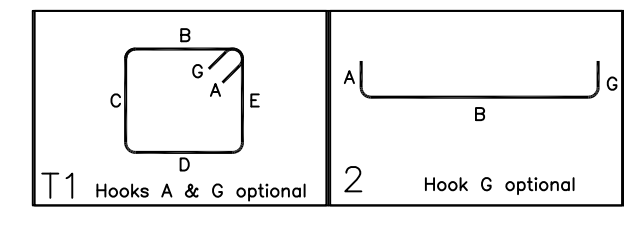
REVISION MARK	REVISION DETAILS	DATE
0	FOR APPROVAL	03/24/2022

PROJECT	RESIDENCE INN,MARRIOTT HYDE PARK		
LOCATION	HYDE PARK, NEW YORK		
ARCHITECT	ZHA ARCHITECTS, PC		
ENGINEER	EHLERT/BRYAN, INC.		
CUSTOMER	PC CONSTRUCTION		
DRAWN BY:	RTP/MRS	DATE:	03/24/22
REVIEWED BY:	T/L	JOB NO.:	22015
DRAWING TITLE:	SPREAD FOOTING/PIER REINFORCEMENT DETAILS		DRAWING NO.:
			RF-01A



Release Number: RE-018

Bar Mark	Qty	Size	Total Length	Type	X	Y	Z	BENDING DETAILS
4A02	30	#4	7'-3"	T1	0'-4"	1'-0"	1'-0"	
6A02	24	#6	4'-2"	2	1'-0"	3'-0"	1'-0"	
6A03	16	#6	5'-1"	2	1'-0"	4'-1"	1'-0"	
6A04	8	#6	4'-1"	2	1'-0"	3'-1"	1'-0"	



TYPE	SIZE	REINFORCEMENT
F2.5	2'-6"x2'-6"x1'-0"	(3)-#4 B EW
F4	4'-0"x6'-0"x1'-0"	(4)-#4 B EW
F6	6'-0"x6'-0"x1'-2"	(6)-#5 B EW
F7	7'-0"x7'-0"x1'-2"	(7)-#5 B EW
F8	8'-0"x8'-0"x1'-4"	(8)-#5 B EW
F9	9'-0"x9'-0"x1'-8"	(9)-#6 B EW
F10	10'-0"x10'-0"x1'-8"	(10)-#6 B EW
F11	11'-0"x11'-0"x1'-10"	(11)-#7 B EW
F12	12'-0"x12'-0"x2'-0"	(12)-#7 B EW
F13	16'-0"x16'-0"x2'-6"	(13)-#8 B EW
F16	6'-0"x11'-0"x1'-8"	(8)-#8 B CONT./#7 @10' O.C B TRANS.

TYPE	SIZE	REINFORCEMENT
P1	1'-8"x1'-8"	(8)-#5 D/V
P2	2'-0"x2'-0"	(8)-#6 D/V

ALL BARS IN THIS DRAWING
ASTM A615 GRADE 60
BLACK UNCOATED

FOR FOOTING/PIER REINFORCEMENT DETAILS
REFER DRAWING RF-01A & RF-01B

LOCATION	MIN. COVER
FOR FOOTING BOTTOM & SIDE	3" CLR
FOR PIER SIDE	1 1/2" CLR
FOR PIER TOP	2" CLR

Abbreviations:
I.F.=Inside Face
O.F.=Outside Face
E.F.=Each Face
V=Vertical
H=Horizontal
C.B.=Corner Bar
S.DWL.=Slab Dowel
E.W.=Each Way
B/BOT.=Bottom
T=Top
MDWL.=Masonry Dowel
B.B.=Bond Beam
ALT.=Alternate
Approx.=Approximate

OPNG=Opening
BAL.=Balance
BTW.=Between
CJ=Construction Joint
CLR.=CLEARANCE
CMU=Concrete Masonry Unit
CONT.=Continuous
EA.=Each
Elev.=Elevation
EMB=Embedment
SW=Short Way
LW=Long Way
BL.=Black Bar
EPP=Epoxy Bar
GA.=Galvanized

NOTICE

Shortages, improper fabrication or claims for any other reason must be reported to this company within a period of 15 days of delivery. This company reserves the right to field inspect prior to replacement or reconditioning of nonconforming material, and will not honor charges for work done in the field without specific authorization from this company.

REINFORCING STEEL PLACING DRAWINGS ONLY USE IN CONJUNCTION WITH CONTRACT DRAWINGS & SPECIFICATIONS. ELEVATIONS & DIMENSIONS SHOWN ON THIS DRAWING ARE FOR DETAILING PURPOSES ONLY AND SHOULD NOT BE USED FOR CONSTRUCTION UNLESS VERIFIED BY ENGINEER OR CONTRACTOR.

REVISION MARK	REVISION DETAILS	DATE
0	FOR APPROVAL	03/24/2022

PROJECT	RESIDENCE INN, MARRIOTT HYDE PARK		
LOCATION	HYDE PARK, NEW YORK		
ARCHITECT	ZHA ARCHITECTS, PC		
ENGINEER	EHLERT/BRYAN, INC.		
CUSTOMER	PC CONSTRUCTION		
DRAWN BY:	RTP/MRS	DATE:	03/24/22
REVIEWED BY:	T/L	JOB NO.:	22015
DRAWING TITLE:	SPREAD FOOTING/PIER REINFORCEMENT DETAILS		DRAWING NO.:
			RF-01B