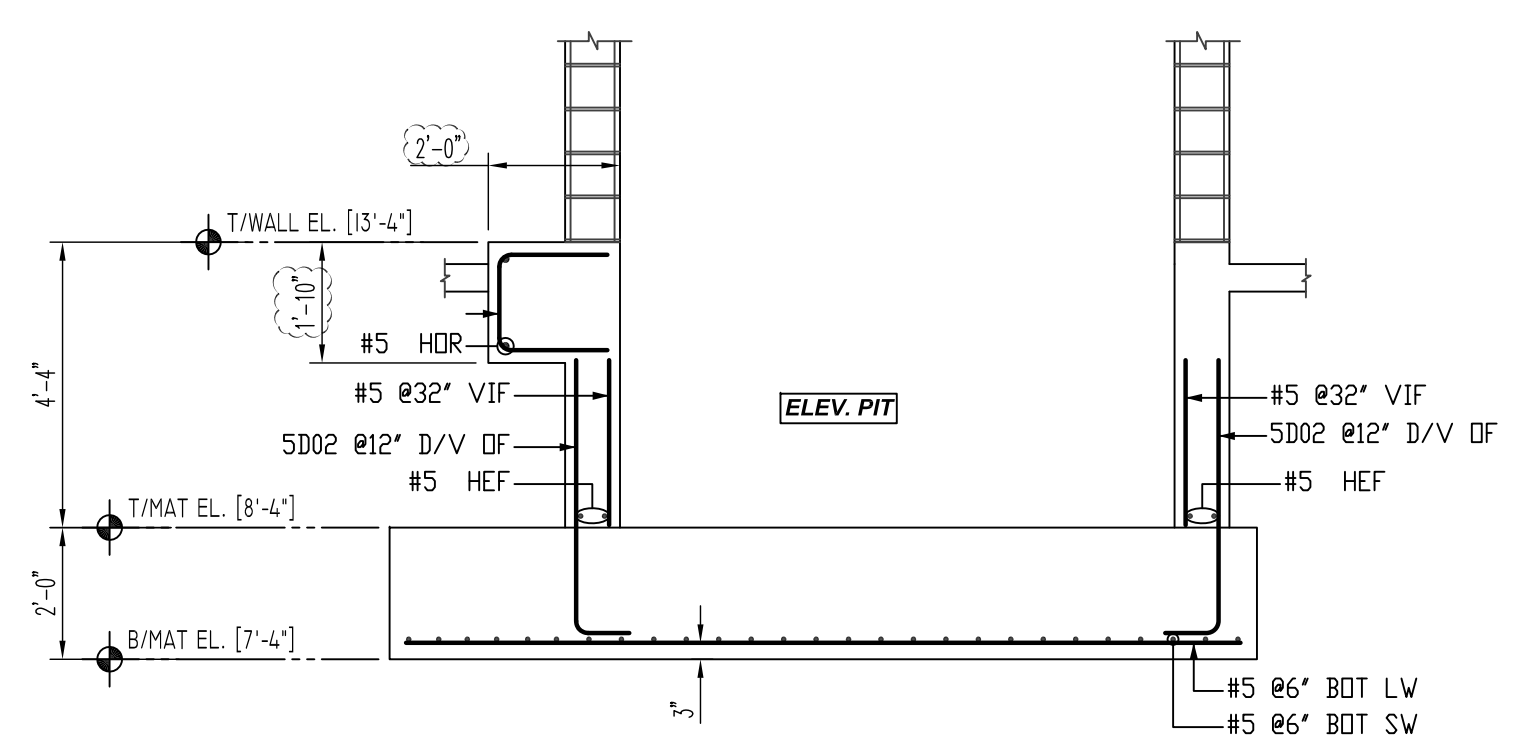
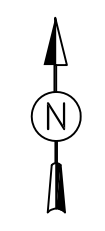
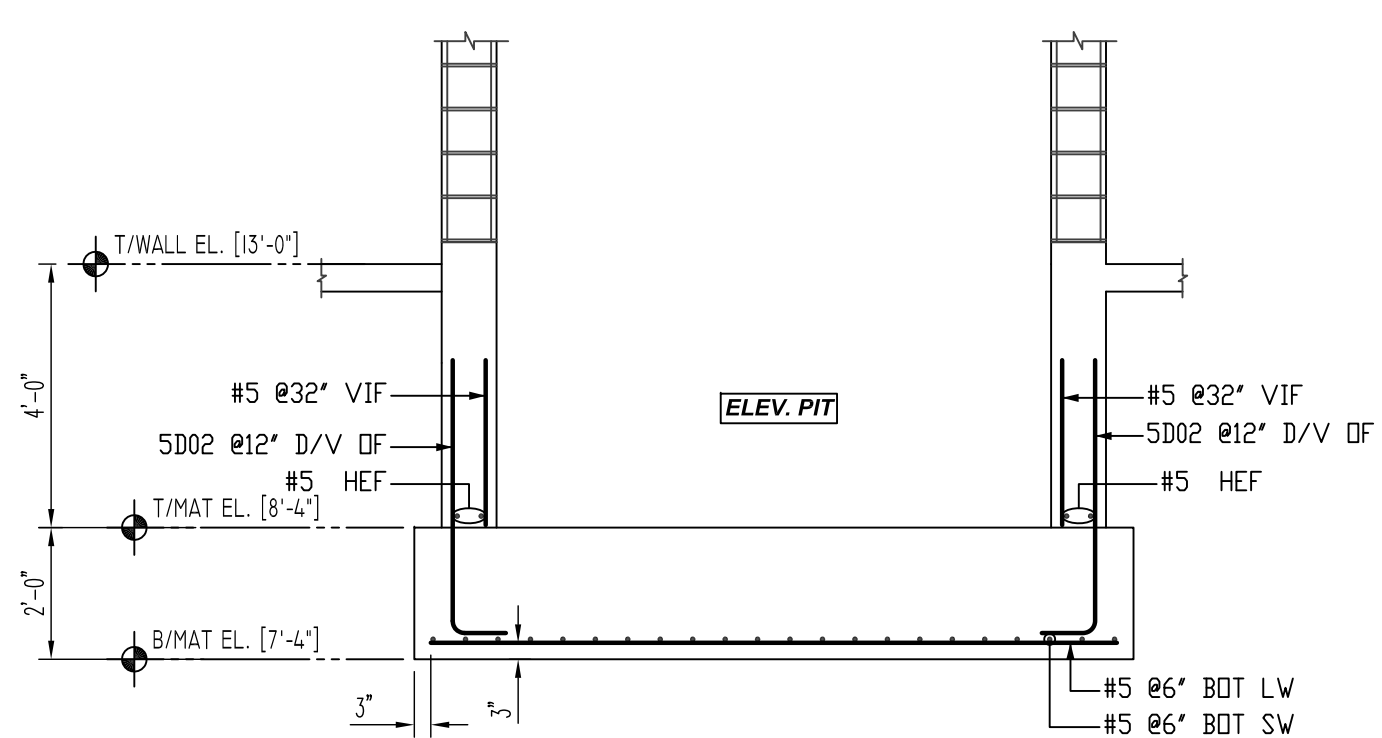


BUILDING-B ELEVATOR PIT LOCATION DETAILS
 SCALE: 1/10" = 1'-0"
 REF: S100 (DT.03/08/22)

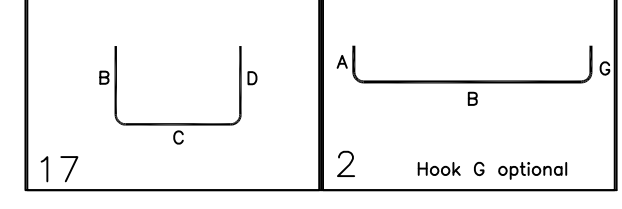


SECTION 1
 SCALE: 1/3" = 1'-0"
 REF: L/A600 (DT.11/14/21)
 PLEASE REVIEW THE ELEVATOR PIT WALL REINF. & BAR ARRANGEMENT DETAILS.



SECTION 2
 SCALE: 1/3" = 1'-0"
 REF: L/A600 (DT.11/14/21)

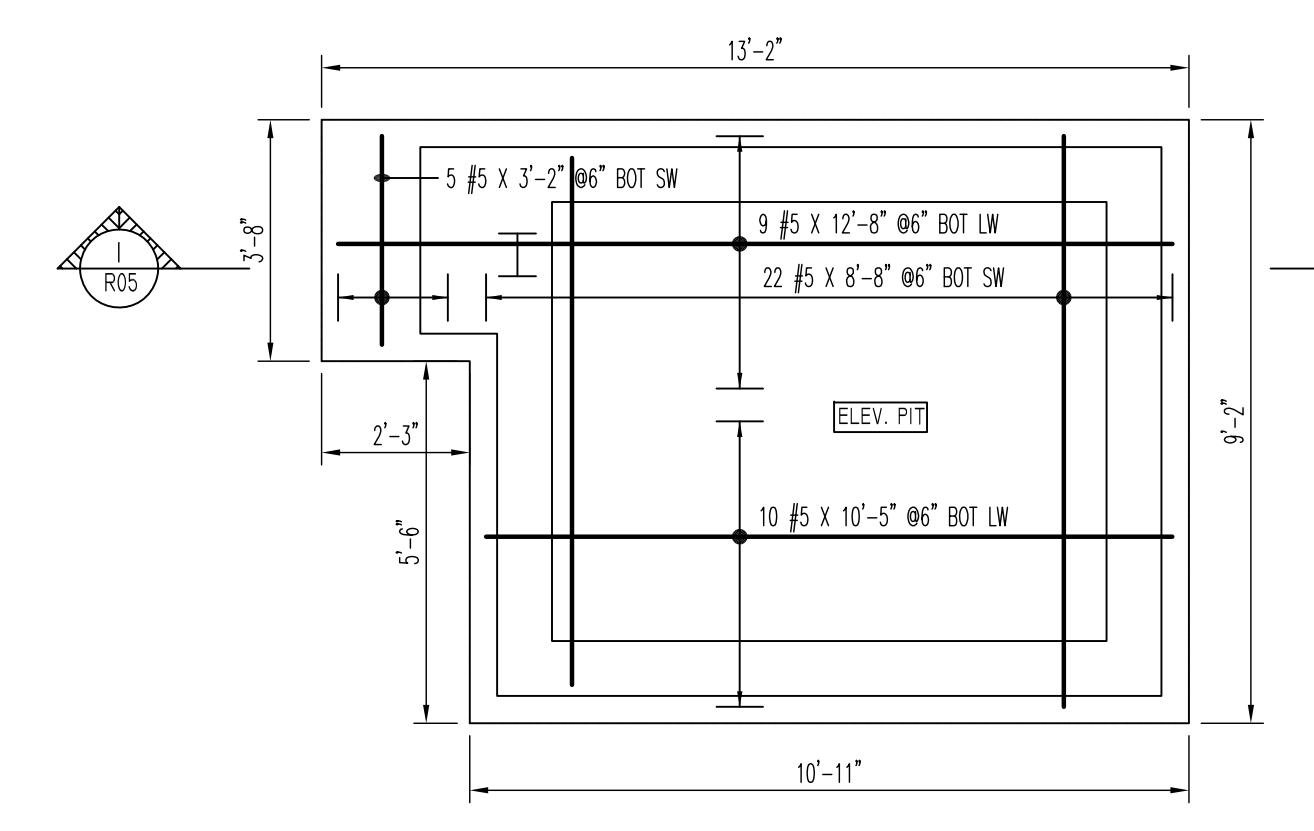
Bar Mark	Qty	Size	Total Length	Type	X'	Y'	Z'	BENDING DETAILS																	
S001	3	#5	4'-10"	17				1'-8"	1'-8"																
S002	4	#5	5'-0"	2	0'-10"	4'-7"																			
S003	8	#5	4'-0"	17				2'-0"	2'-0"																



LAP SCHEDULE		
SIZE	3000 PSI	
	TOP	OTHERS
#3	28"	22"
#4	37"	29"
#5	47"	36"
#6	56"	43"
#7	81"	63"
#8	93"	72"
#9	105"	81"
#10	118"	91"
#11	131"	101"

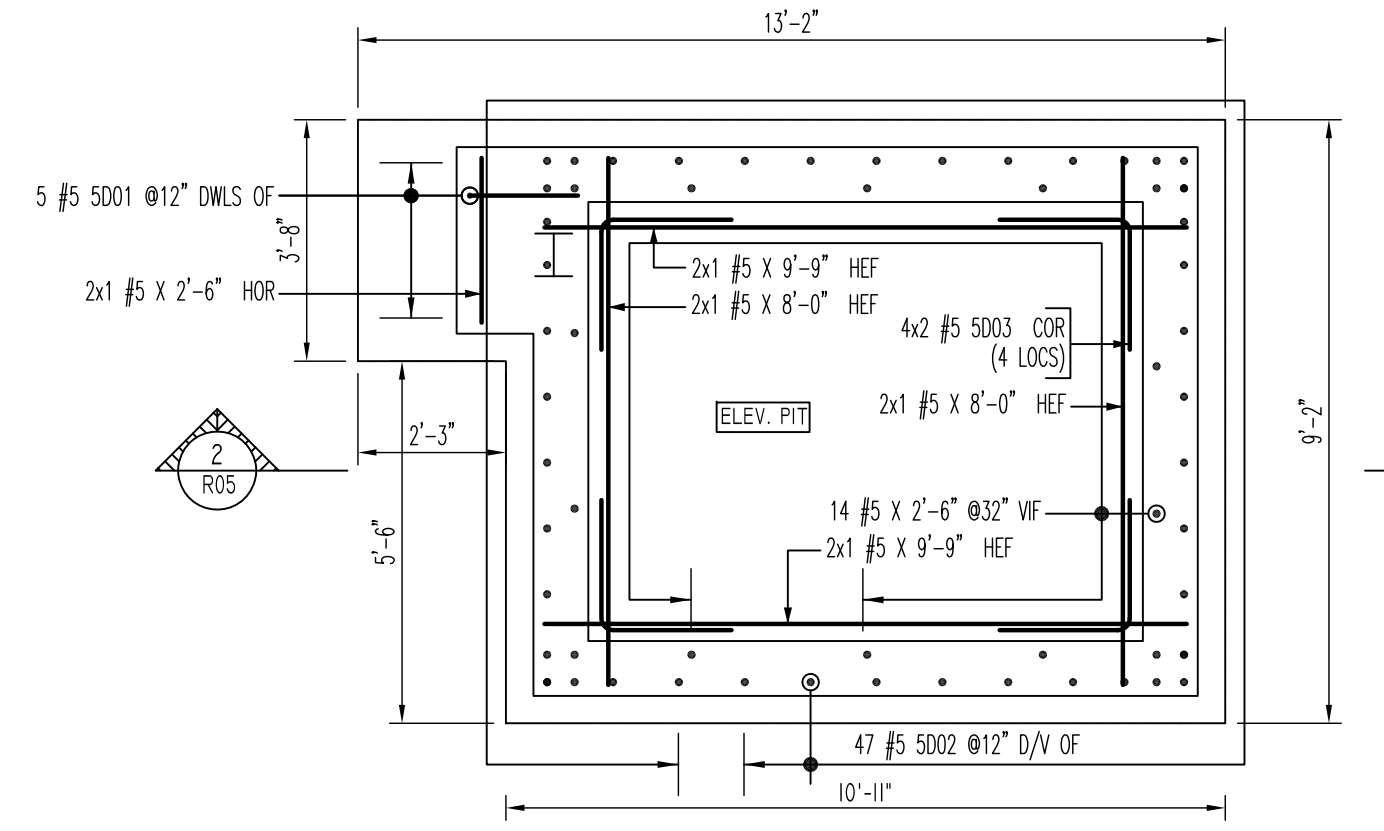
TYPICAL REINFORCING BAR CLEARANCE TABLE	
LOCATION	MIN. COVER
FOOTING TOP	3" CLR
FOOTING BOT & SIDES	3" CLR
WALL SIDES	2" CLR

**ALL BARS IN THIS DRAWING
 ASTM A615 GRADE 60
 BLACK UNCOATED**



(SHOWING ELEV. PIT MAT REINFORCEMENT DETAILS)

DETAIL-A
 SCALE: 1/3" = 1'-0"
 REF: S100 (DT.03/08/22)
 PLEASE REVIEW THE ELEVATOR PIT MAT REINF. & BAR ARRANGEMENT DETAILS.



(SHOWING ELEV. PIT WALL REINFORCEMENT DETAILS)

DETAIL-A
 SCALE: 1/3" = 1'-0"
 REF: S100 (DT.03/08/22)

- Abbreviations:**
 I.F.=Inside Face
 O.F.=Outside Face
 E.F.=Each Face
 DWL=Dowel
 V=Vertical
 H=Horizontal
 C.B.=Corner Bar
 S.DWL=Slab Dowel
 E.W.=Each Way
 B/BOT=Bottom
 T=Top
 MDWL=Masonry Dowel
 B.B.=Bond Beam
 ALT.=Alternate
 Approx.=Approximate
- OPNG=Opening**
 BAL.=Balance
 BTW=Between
 CJ=Construction Joint
 CLR.=CLEARANCE
 CMU=Concrete Masonry Unit
 CONT.=Continuous
 EA.=Each
 Elev.=Elevation
 EMB=Embedment
 SW=Short Way
 LW=Long Way
 (BL)=Black Bar
 (EP)=Epoxy Bar
 (GA)=Galvanized

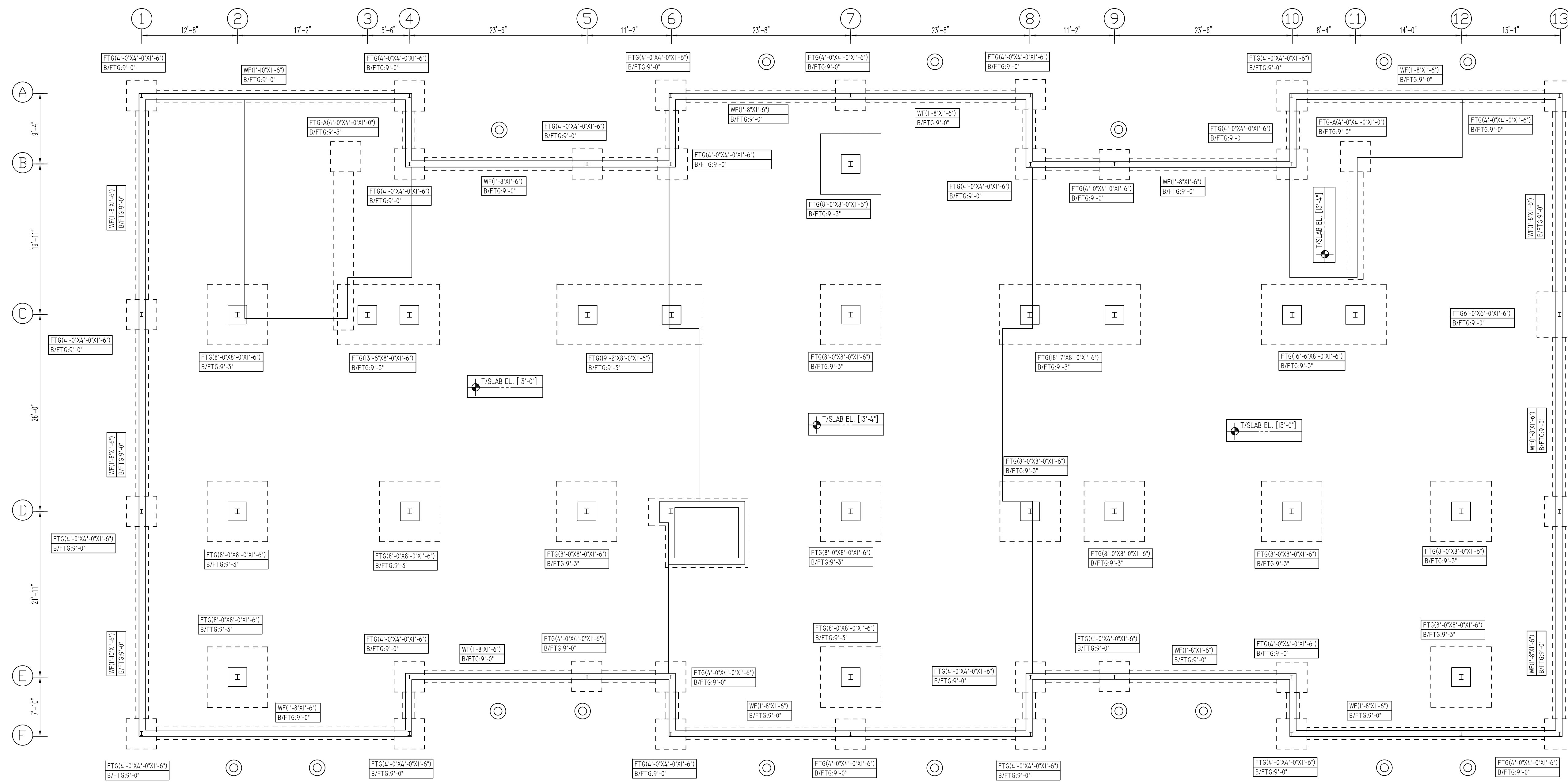
NOTICE

Shortages, improper fabrication or claims for any other reason must be reported to this company within a period of 15 days of delivery. This company reserves the right to field inspect prior to replacement or reconditioning of nonconforming material, and will not honor charges for work done in the field without specific authorization from this company.

REINFORCING STEEL PLACING DRAWINGS ONLY USE IN CONJUNCTION WITH CONTRACT DRAWINGS & SPECIFICATIONS. ELEVATIONS & DIMENSIONS SHOWN ON THIS DRAWING ARE FOR DETAILING PURPOSES ONLY AND SHOULD NOT BE USED FOR CONSTRUCTION UNLESS VERIFIED BY ENGINEER OR CONTRACTOR.

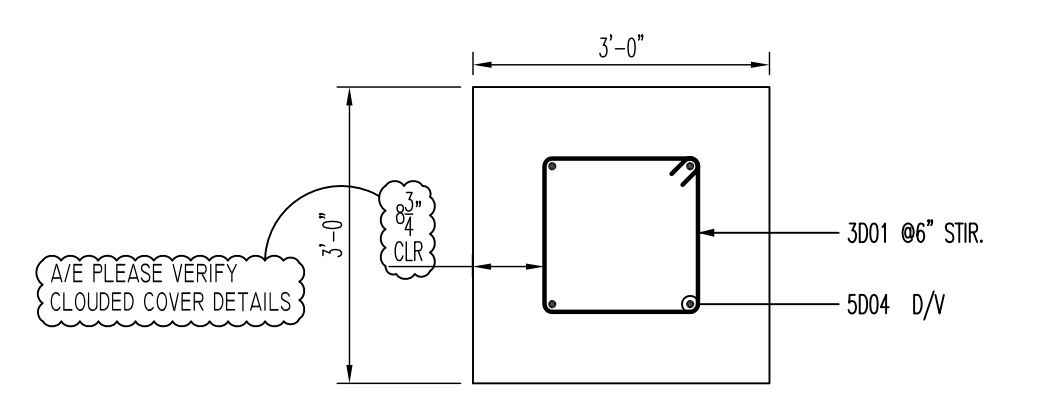
REVISION MARK	REVISION DETAILS	DATE
0	FOR APPROVAL	03/23/2022

PROJECT	MARINERS LANDING						
LOCATION	60 MAPLE STREET, BRANFORD, CT						
ARCHITECT	CHARLES GEORGIE ASSOCIATES						
ENGINEER	CHARLES GEORGIE ASSOCIATES						
CUSTOMER	CHERRY HILL INC						
DRAWN BY:	GOW/MRS	DATE:	03/23/22	REVIEWED BY:	T/L	JOB NO.:	22016
DRAWING TITLE:							DRAWING NO.:
BUILDING-B ELEVATOR PIT REINFORCEMENT DETAILS							R05



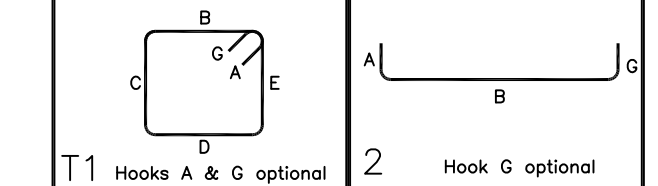
FOOTING SCHEDULE				
MARK	QTY	SIZE(LxBxD)	REINFORCING	REMARK
FTG(4'-0"x4'-0")	29	4'-0"x4'-0"x1'-6"	29x28 #5 X 3'-6" @6" BOT EW	REFER SECTION-1
FTG(6'-0"x6'-0")	1	6'-0"x6'-0"x1'-6"	2x12 #5 X 5'-6" @6" BOT EW	REFER SECTION-1
FTG(8'-0"x8'-0")	14	8'-0"x8'-0"x1'-6"	14x2x13 #5 X 7'-6" @6" BOT EW	REFER SECTION-2
FTG(13'-6"x8'-0")	1	13'-6"x8'-0"x1'-6"	21 #5 X 7'-6" @6" BOT SW 13 #5 X 13'-0" @6" BOT LW	REFER SECTION-2
FTG(19'-2"x8'-0")	1	19'-2"x8'-0"x1'-6"	29 #5 X 7'-6" @6" BOT SW 13 #5 X 18'-8" @6" BOT LW	REFER SECTION-2
FTG(18'-7"x8'-0")	1	18'-7"x8'-0"x1'-6"	28 #5 X 7'-6" @6" BOT SW 13 #5 X 18'-1" @6" BOT LW	REFER SECTION-2
FTG(16'-6"x8'-0")	1	16'-6"x8'-0"x1'-6"	25 #5 X 7'-6" @6" BOT SW 13 #5 X 16'-0" @6" BOT LW	REFER SECTION-2
FTG(4'-0"x4'-0")	2	4'-0"x4'-0"x1'-0"	2x4 #5 X 3'-6" @6" BOT EW	REFER SECTION-1

BUILDING-B COLUMN FOOTING REINFORCEMENT DETAILS
 SCALE: 1/8" = 1'-0"
 REF: S100 (DT.03/08/22)



A-A SECTION
 SCALE: 1/2" = 1'-0"

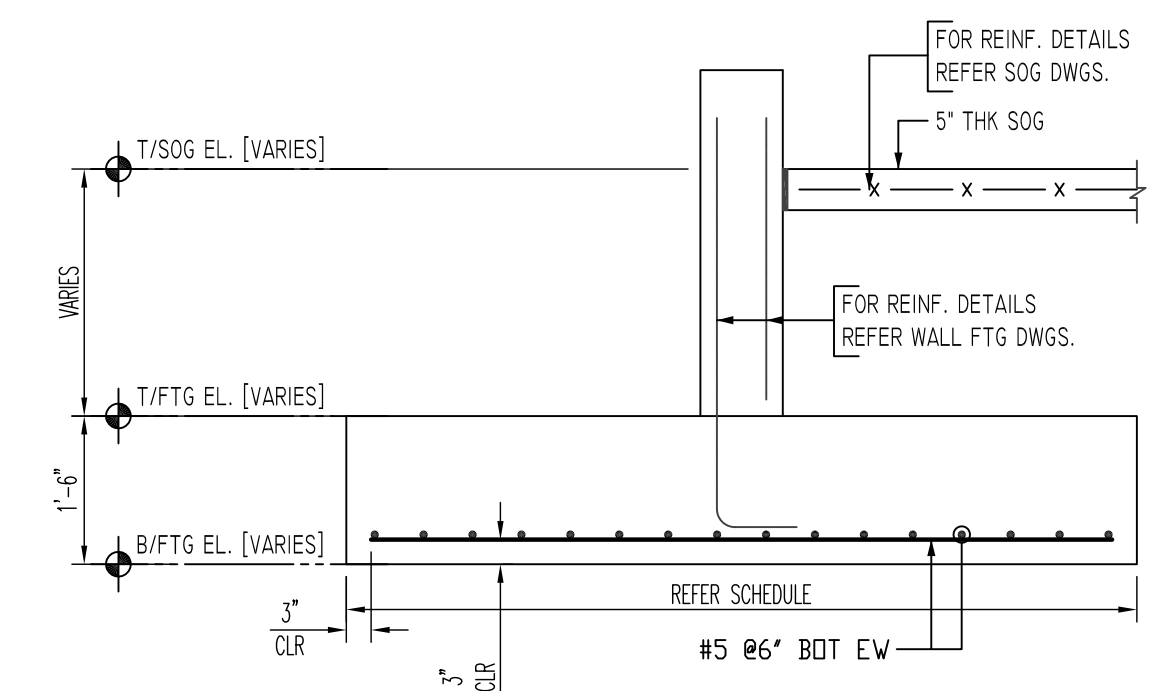
Release Number: R06		BENDING DETAILS												
Bar Mark	Qty	Size	Total Length	Type	X'	Y'	Z'	W'	V'	U'	T'	S'	R'	Q'
3001	88	#3	7'-0"	11	0'-4"	1'-7"	1'-7"	1'-7"	1'-7"	0'-4"				
5004	88	#5	3'-10"	2	0'-10"	3'-0"								



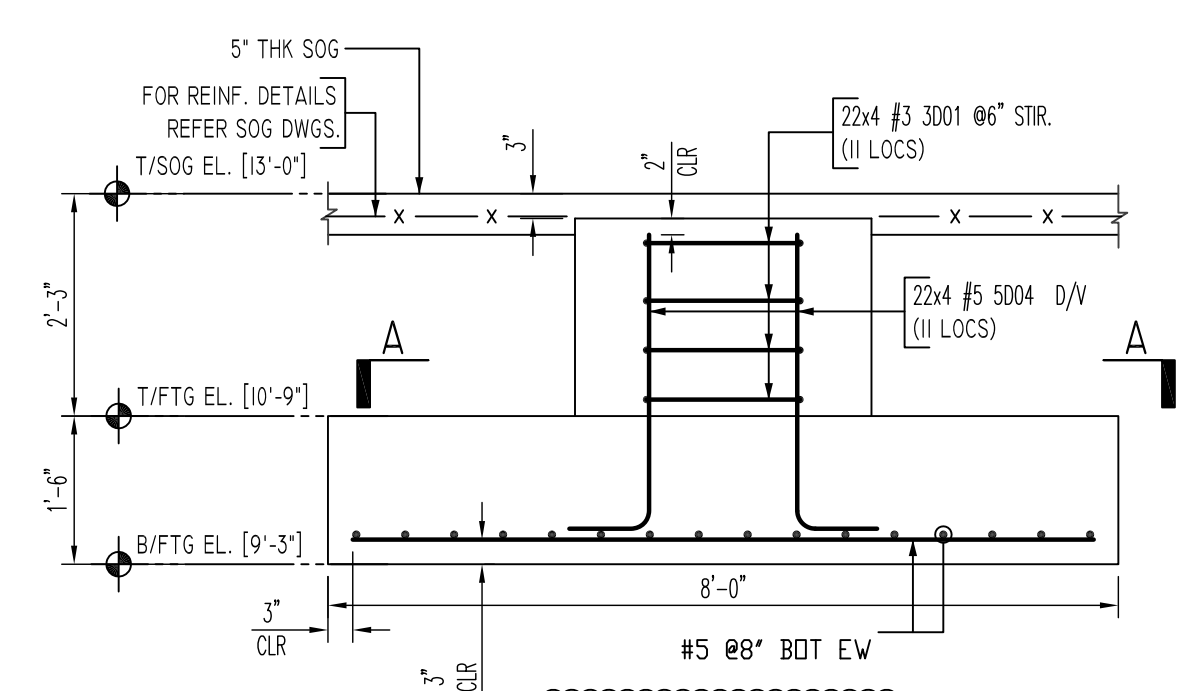
LAP SCHEDULE		
SIZE	3000 PSI	OTHERS
#3	28"	22"
#4	37"	29"
#5	47"	36"
#6	56"	43"
#7	81"	63"
#8	93"	72"
#9	105"	81"
#10	118"	91"
#11	131"	101"

TYPICAL REINFORCING BAR CLEARANCE TABLE	
LOCATION	MIN. COVER
FOOTING TOP	3" CLR
FOOTING BOT & SIDES	3" CLR
WALL SIDES	2" CLR

**ALL BARS IN THIS DRAWING
 ASTM A615 GRADE 60
 BLACK UNCOATED**



SECTION 1
 SCALE: 1/2" = 1'-0"
 REF: -



SECTION 2
 SCALE: 1/2" = 1'-0"
 REF: 4/S600(DT.02/22/22)

Abbreviations:
 I.F.=Inside Face
 O.F.=Outside Face
 E.F.=Each Face
 V=Vertical
 H=Horizontal
 C.B.=Corner Bar
 S.D.W.L.=Slab Dowel
 E.W.=Each Way
 B/BOT.=Bottom
 T=Top
 MDWL.=Masonry Dowel
 B.B.=Bond Beam
 ALT.=Alternate
 Approx.=Approximate

OPNG=Opening
BAL.=Balance
BTW.=Between
CJ.=Construction Joint
CLR.=CLEARANCE
CMU.=Concrete Masonry Unit
CONT.=Continuous
EA.=Each
Elev.=Elevation
EMB.=Embedment
SW.=Short Way
LW.=Long Way
(BL)=Black Bar
(EP)=Epoxy Bar
(GA)=Galvanized

NOTICE
 Shortages, improper fabrication or claims for any other reason must be reported to this company within a period of 15 days of delivery. This company reserves the right to field inspect prior to replacement or reconditioning of nonconforming material, and will not honor charges for work done in the field without specific authorization from this company.

REINFORCING STEEL PLACING DRAWINGS ONLY USE IN CONJUNCTION WITH CONTRACT DRAWINGS & SPECIFICATIONS. ELEVATIONS & DIMENSIONS SHOWN ON THIS DRAWING ARE FOR DETAILING PURPOSES ONLY AND SHOULD NOT BE USED FOR CONSTRUCTION UNLESS VERIFIED BY ENGINEER OR CONTRACTOR.

REVISION MARK	REVISION DETAILS	DATE
0	FOR APPROVAL	03/23/2022

PROJECT	MARINERS LANDING
LOCATION	60 MAPLE STREET, BRANFORD, CT
ARCHITECT	CHARLES GEORGIE ASSOCIATES
ENGINEER	CHARLES GEORGIE ASSOCIATES
CUSTOMER	CERRY HILL INC

DRAWN BY:	DATE:	REVIEWED BY:	JOB NO.
GOW/MRS	03/23/22	T/L	22016
DRAWING TITLE:			DRAWING NO.:
BUILDING-B PAD FOOTINGS & PIER REINFORCEMENT DETAILS			R06