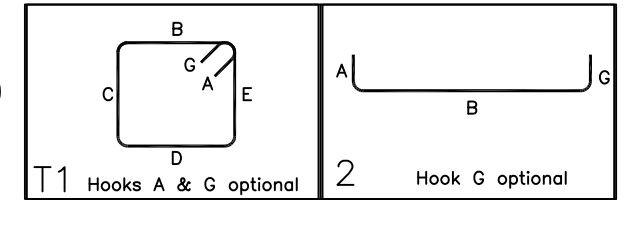
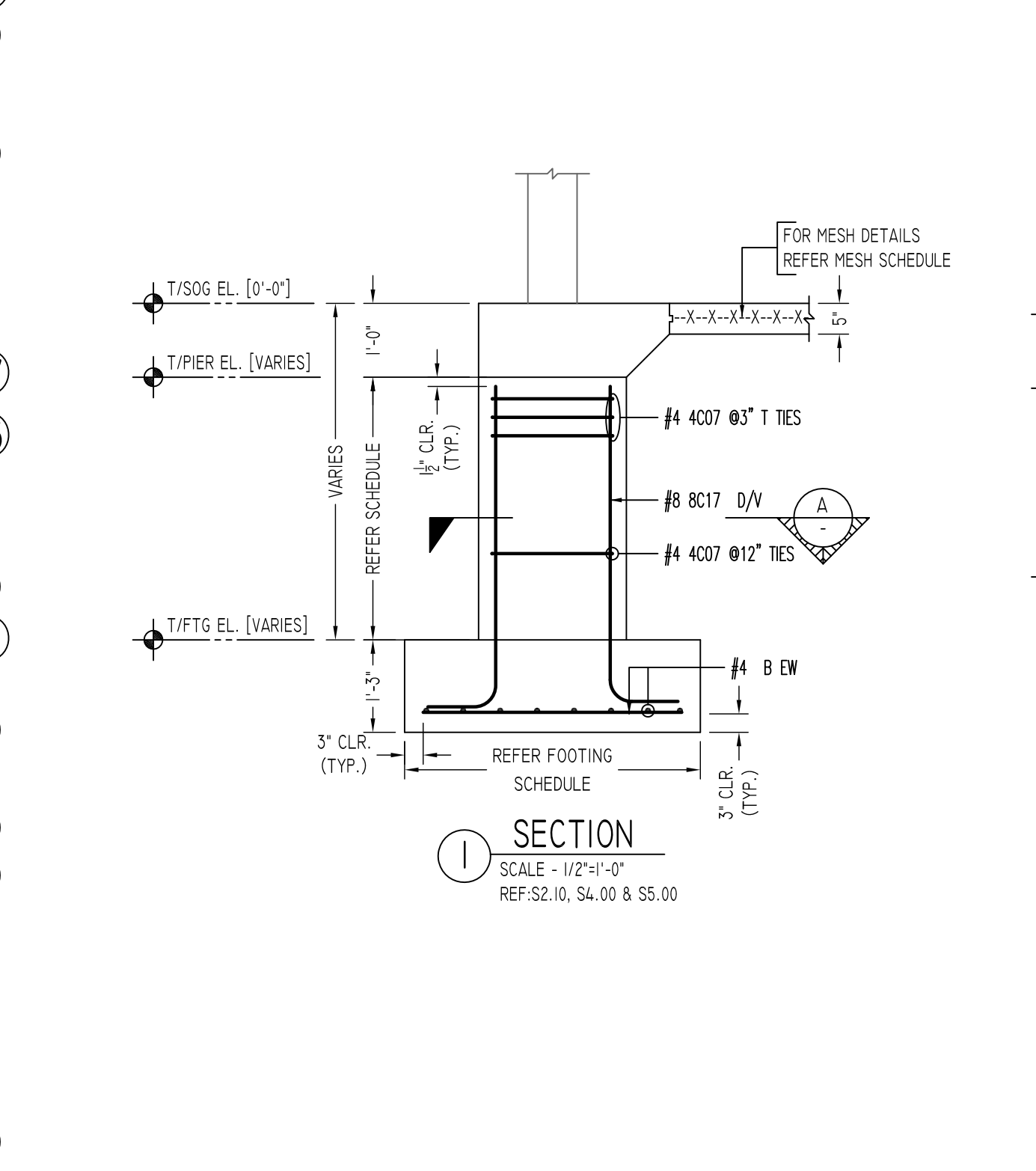


AREA-B FOUNDATION REINFORCEMENT DETAILS
 SCALE - 1/8"=1'-0"
 REF:S2.II

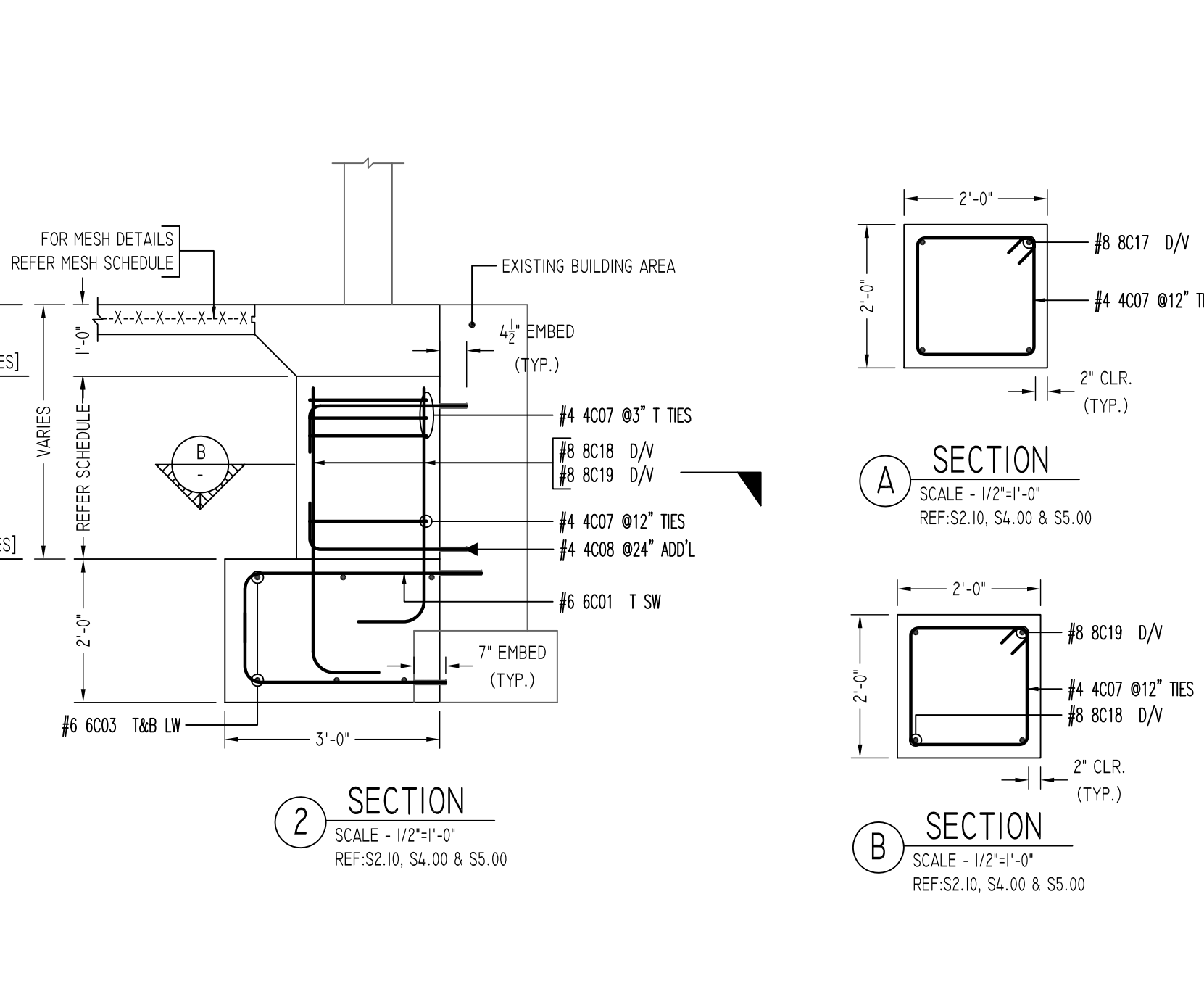
Bar Work	Qty	Size	Total Length	Type	X	Y	W	V	H	U	V	W	X	Y
4007	250	#4	7'-5"	T1	0'-4 1/2"	1'-0"								
4008	30	#4	2'-10 1/2"	2	0'-8"	0'-8"	1'-8"	1'-8"	1'-8"					
4009	18	#4	10'-1"	T1	0'-4 1/2"	2'-4"	2'-4"	2'-4"	2'-4"					
4010	12	#4	9'-5"	T1	0'-4 1/2"	2'-2"	2'-2"	2'-2"	2'-2"					
6001	18	#6	4'-4"	2	1'-0"	3'-4"								
6002	18	#6	3'-10"	2	1'-0"	2'-10"								
6003	36	#6	5'-6"	2	1'-0"	3'-6"								
8001	8	#8	7'-1 1/2"	2	1'-4"	5'-9 1/2"								
8002	44	#8	5'-1 1/2"	2	1'-4"	3'-9 1/2"								
8003	20	#8	4'-1 1/2"	2	1'-4"	2'-9 1/2"								
8004	4	#8	4'-0 1/2"	2	1'-4"	2'-8 1/2"								
8005	12	#8	7'-10 1/2"	2	1'-4"	6'-6 1/2"								
8006	4	#8	8'-0 1/2"	2	1'-4"	6'-8 1/2"								
8007	8	#8	6'-8 1/2"	2	1'-4"	5'-2 1/2"								
8008	4	#8	5'-6 1/2"	2	1'-4"	4'-2 1/2"								
8009	8	#8	4'-6 1/2"	2	1'-4"	3'-2 1/2"								
8010	4	#8	4'-3 1/2"	2	1'-4"	2'-11 1/2"								
8011	2	#8	2'-2 1/2"	2	1'-4"	0'-10 1/2"								
8012	4	#8	7'-1 1/2"	2	1'-4"	6'-3 1/2"								
8013	4	#8	12'-3"	2	1'-4"	10'-11"								
8014	4	#8	9'-9 1/2"	2	1'-4"	8'-5 1/2"								
8015	4	#8	12'-6"	2	1'-4"	11'-2"								
8016	2	#8	2'-5 1/2"	2	1'-4"	1'-1 1/2"								
8017	4	#8	6'-1 1/2"	2	1'-4"	4'-9 1/2"								
8018	8	#8	3'-9 1/2"	2	1'-4"	2'-5 1/2"								
8019	8	#8	3'-8 1/2"	2	1'-4"	2'-2 1/2"								



MARK	QTY	SIZE	GRID LOCATION	REINFORCING	REMARK
F40	42	4'-0"x4'-0"x1'-3"	A/C-2'-0"/I/L(4'-0 7/8),A/I3,A/I4,B/I4,B/I7, D/I7,D/20,D/22,E/I7,E.5/I7,E.5/22,E.7/I1.5, F/I1.5,F/12,F/13,F/14,F/17,F/20,F/22,H/21, H/22,H/24,H/25,H/116,H.9/16,J/22,J/25, L/17,L/25,N/17,N/25,S/17,S/25,T/18,T/19, T/24,T/25,W/18,W/19,W/22,W/24 & W/25	40x28 #4 X 3'-6" B EW	REFER SECTION-1
F40A	1	4'-0"x4'-0"x1'-3"	A/I2	1 #4 X 3'-6" B LW 7 #4 X 3'-7" B LW 4/2 EMBED	REFER SECTION-2
F50	6	5'-0"x5'-0"x1'-3"	D/I4, J/17, J/21, J/23, S/21 & S/23	6x26 #5 X 4'-6" B EW	REFER SECTION-2
F4030	6	4'-0"x3'-0"x2'-0"	D/I2,D-12/L/16,N/16,S/16 & T/16	6x23 #6 6003 TAB LW 6x3 #6 6001 T SW 6x3 #6 6002 B SW 7" EMBED	REFER SECTION-2



MARK	QTY	SIZE	GRID LOCATION	VERTICAL	TIES	REMARKS
PI	2	2'-0"x2'-0"	A/C-2'-0"/I/L(4'-0 7/8) & A/I4	2x4 #8 8001 D/V	2x3 #4 4007 #3" T TIES 2x5 #4 4007 #12" TIES	REFER SECTION-1
PIA	1	2'-0"x2'-0"	A/I3	4 #8 8017 D/V	3 #4 4007 #3" T TIES 4 #4 4007 #12" TIES	REFER SECTION-1
PIB	11	2'-0"x2'-0"	A/12,B/I4,B/I7,D/I4,E.5/22,H/22, H/24,L/25,N/25,S/25 & T/25	11x4 #8 8002 D/V	11x3 #4 4007 #3" T TIES 11x3 #4 4007 #12" TIES	REFER SECTION-1
PIC	6	2'-0"x2'-0"	E/I7,F/11.5,F/12,F/13,F/14 & H/116	5x4 #8 8003 D/V 4 #8 8004 D/V	6x3 #4 4007 #3" T TIES 6x2 #4 4007 #12" TIES	REFER SECTION-1
PID	3	2'-0"x2'-0"	D/22,H/25 & J/25 F/22	3x4 #8 8005 D/V	3x3 #4 4007 #3" T TIES 3x6 #4 4007 #12" TIES	REFER SECTION-1
PIE	1	2'-0"x2'-0"	F/22	4 #8 8006 D/V	3 #4 4007 #3" T TIES 6 #4 4007 #12" TIES	REFER SECTION-1
PIF	2	2'-0"x2'-0"	W/22 & W/24	2x4 #8 8007 D/V	2x3 #4 4007 #3" T TIES 2x4 #4 4007 #12" TIES	REFER SECTION-1
PIG	1	2'-0"x2'-0"	W/19	4 #8 8008 D/V	3 #4 4007 #3" T TIES 3 #4 4007 #12" TIES	REFER SECTION-1
PIH	2	2'-0"x2'-0"	T/18 & W/18	2x4 #8 8009 D/V	2x3 #4 4007 #3" T TIES 2x2 #4 4007 #12" TIES	REFER SECTION-1
PIJ	1	2'-0"x2'-0"	T/24	4 #8 8010 D/V	3 #4 4007 #3" T TIES 2 #4 4007 #12" TIES	REFER SECTION-1
PIK	1	2'-0"x2'-0"	H.9/16	4 #8 8012 D/V	3 #4 4007 #3" T TIES 5 #4 4007 #12" TIES	REFER SECTION-1
PII	1	2'-0"x2'-0"	L/16	2 #8 8016 D/V 2 #8 8011 D/V	1 #4 4007 #12" TIES 2 #4 4008 #24" ADD'L 4/2 EMBED @ EXISTING DRILLED & EPOXY	REFER SECTION-2
PIM	3	2'-0"x2'-0"	N/16,S/16 & T/16	3x2 #8 8018 D/V 3x2 #8 8019 D/V	3x3 #4 4007 #3" T TIES 3x1 #4 4007 #12" TIES 3x2 #4 4008 #24" ADD'L 4/2 EMBED @ EXISTING DRILLED & EPOXY	REFER SECTION-2
PIN	2	2'-0"x2'-0"	D-1/2 & E.7/11.5	2x2 #8 8015 D/V 2x2 #8 8013 D/V	2x3 #4 4007 #3" T TIES 2x11 #4 4007 #12" TIES 2x6x2 #4 4008 #24" ADD'L 4/2 EMBED @ EXISTING DRILLED & EPOXY	REFER SECTION-2
PIP	1	2'-0"x2'-0"	D/12	4 #8 8014 D/V	3 #4 4007 #3" T TIES 8 #4 4007 #12" TIES	REFER SECTION-1
P2	3	2'-8"x2'-8"	D/17,D/20 & W/25	3x4 #8 8002 D/V	3x3 #4 4009 #3" T TIES 3x3 #4 4009 #12" TIES	REFER SECTION-1
P3	2	2'-6"x2'-6"	L/17 & N/17	2x4 #8 8002 D/V	2x3 #4 4010 #3" T TIES 2x3 #4 4010 #12" TIES	REFER SECTION-1



LAP SCHEDULE		
SIZE	4000 PSI	
	TOP OTHERS	
#3	24"	19"
#4	32"	25"
#5	40"	31"
#6	48"	37"
#7	70"	54"
#8	80"	62"
#9	90"	70"
#10	102"	79"
#11	115"	87"

TYPICAL REINFORCING BAR CLEARANCE TABLE	
LOCATION	MIN. COVER
FOOTING TOP	2" CLR
FOOTING TOP SIDE & BOTTOM	3" CLR

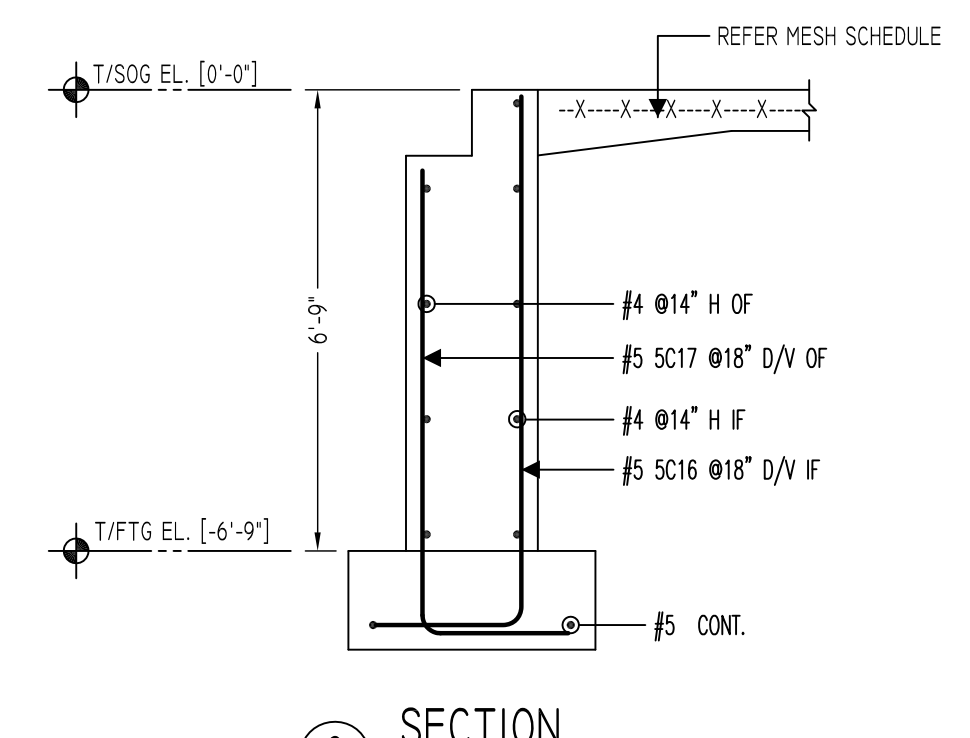
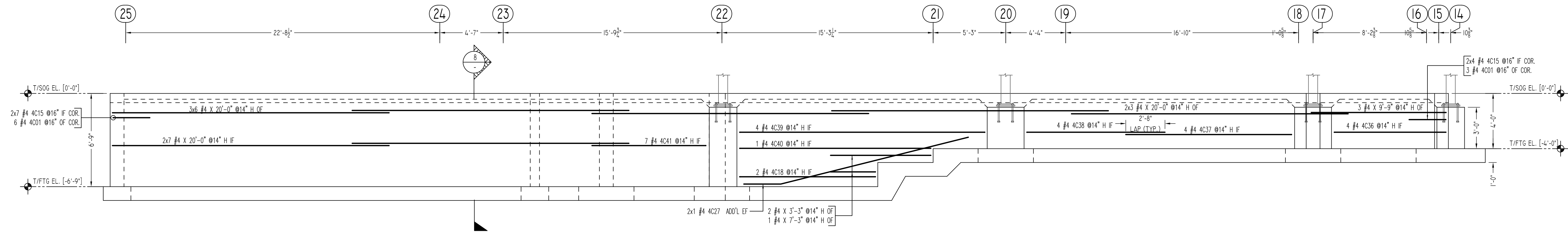
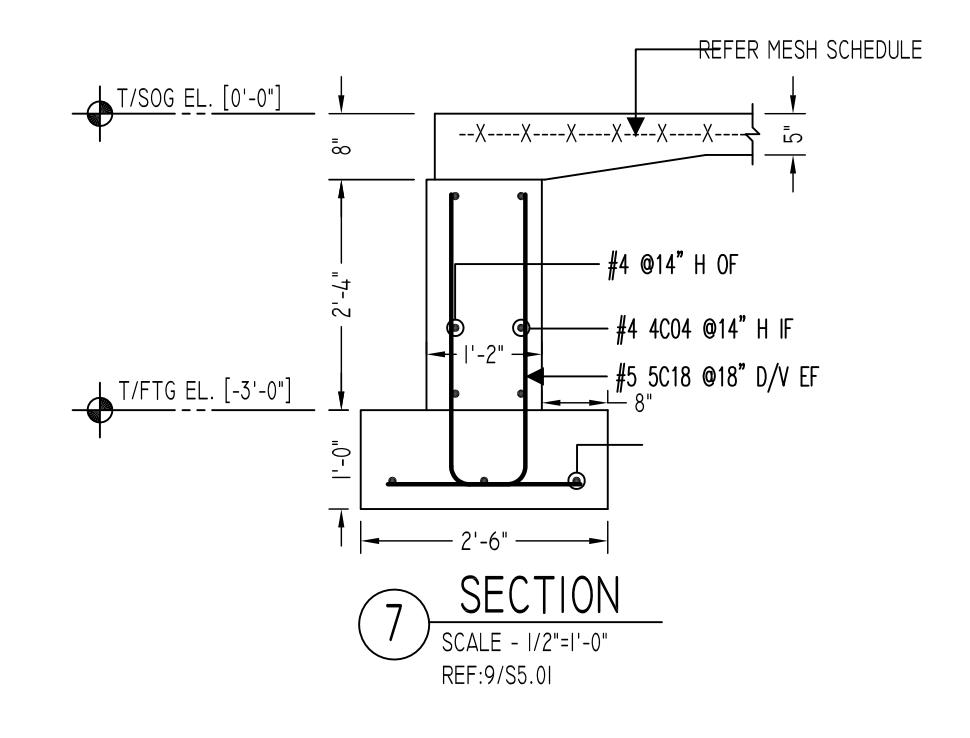
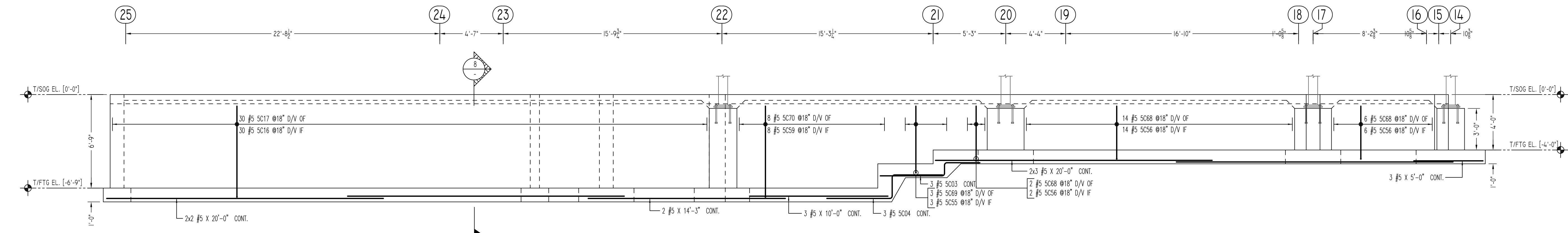
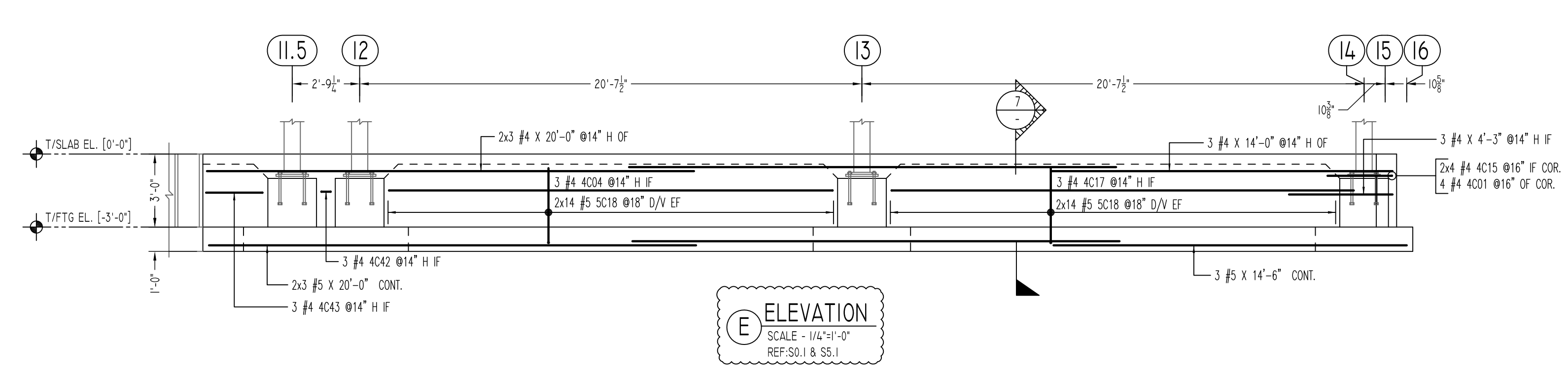
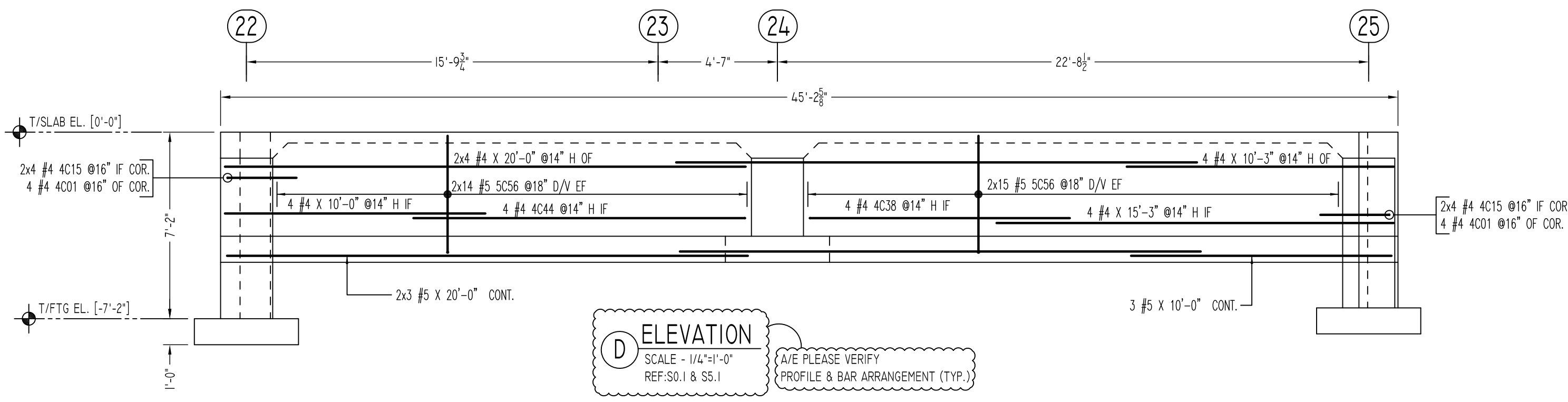
NOTICE
 Shortages, improper fabrication or claims for any other reason must be reported to this company within a period of 15 days of delivery. This company reserves the right to field inspect prior to replacement or reconditioning of nonconforming material, and will not honor charges for work done in the field without specific authorization from this company.

REINFORCING STEEL PLACING DRAWINGS ONLY USE IN CONJUNCTION WITH CONTRACT DRAWINGS & SPECIFICATIONS. ELEVATIONS & DIMENSIONS SHOWN ON THIS DRAWING ARE FOR DETAILING PURPOSES ONLY AND SHOULD NOT BE USED FOR CONSTRUCTION UNLESS VERIFIED BY ENGINEER OR CONTRACTOR.

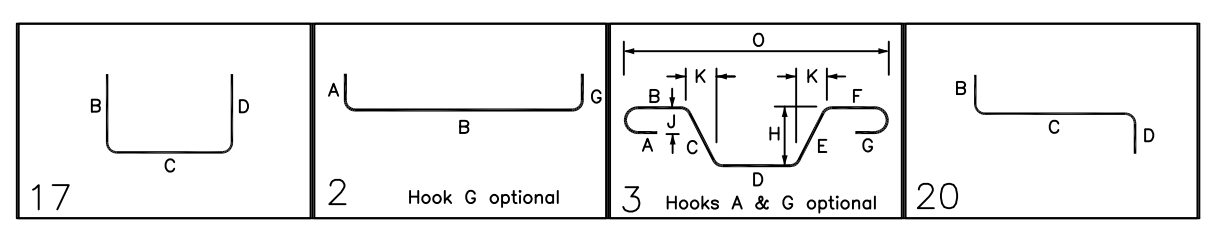
REVISION MARK	REVISION DETAILS	DATE
0	FOR APPROVAL	08/09/2022

PROJECT	LATIMER LANE SCHOOL RENOVATION
LOCATION	33 MOUNTAIN VIEW DRIVE WEATOGUE, CT 06089
ARCHITECT	TECTON ARCHITECTS
ENGINEER	MICHAEL HORTON ASSOCIATES, INC.
CUSTOMER	

DRAWN BY:	DATE:	REVIEWED BY:	JOB NO.
GOW/MRS	08/09/22	T/L	22065
DRAWING TITLE:	AREA-B PAD FOOTING REINFORCEMENT DETAILS		DRAWING NO.:
			R06



Bar Mark	Qty	Size	Total Length	Type	X	Y	Z	BENDING DETAILS															
W	V	U	T	S	R	Q	P	O	N	M	L	K	J	I	H	G	F	E	D	C	B	A	
4C01	2	#4	5'-4"	17				2'-8"	2'-8"														
4C04	3	#4	19'-7"	2	0'-8"	18'-3"																	
4C15	46	#4	3'-4"	2	0'-8"	2'-8"																	
4C17	3	#4	19'-8"	2	0'-8"	19'-0"																	
4C18	2	#4	10'-6"	2	0'-8"	0'-10"																	
4C27	2	#4	16'-7 1/2"	3		2'-8"	13'-11 1/2"										3'-5"				15'-8 1/2"	16'-2 1/2"	
4C36	4	#4	8'-9"	2	0'-8"	8'-1"																	
4C37	4	#4	12'-8"	2	0'-8"	12'-0"																	
4C38	8	#4	10'-8"	2	0'-8"	10'-0"																	
4C39	4	#4	19'-1"	2	0'-8"	17'-9"																	
4C40	1	#4	14'-6"	2	0'-8"	13'-10"																	
4C41	7	#4	8'-11"	2	0'-8"	8'-3"																	
4C42	3	#4	1'-9"	2	0'-8"	0'-5"																	
4C43	3	#4	3'-0"	2	0'-8"	2'-4"																	
4C44	4	#4	13'-5"	2	0'-8"	12'-9"																	
5C03	3	#5	8'-3"	20		2'-7"	1'-0"	4'-8"															
5C04	3	#5	10'-2"	20		3'-8"	1'-9"	4'-9"															
5C16	30	#5	8'-9"	17		1'-6"	7'-3"																
5C17	30	#5	8'-1"	17		1'-6"	6'-7"																
5C18	56	#5	5'-1"	17		2'-0"	3'-1"																
5C55	3	#5	7'-6"	17		2'-0"	5'-6"																
5C56	8	#5	6'-6"	17		2'-0"	4'-6"																
5C59	8	#5	9'-3"	17		2'-0"	3'-3"																
5C68	22	#5	5'-10"	17		2'-0"	3'-10"																
5C69	3	#5	6'-10"	17		2'-0"	4'-10"																
5C70	8	#5	8'-7"	17		2'-0"	6'-7"																



A/E PLEASE VERIFY LAP VALUE

A/E PLEASE VERIFY COVER VALUE

A/E PLEASE VERIFY LAP VALUE

LOCATION	MIN. COVER
FOOTING TOP	2" CLR
FOOTING TOP SIDE & BOTTOM	3" CLR

SIZE	4000 PSI	
	TOP	OTHERS
#3	24"	19"
#4	32"	25"
#5	40"	31"
#6	48"	37"
#7	70"	54"
#8	80"	62"
#9	91"	70"
#10	102"	79"
#11	113"	87"

Abbreviations:
 I.F.=Inside Face
 O.F.=Outside Face
 E.F.=Each Face
 DWL=Dowel
 V=Vertical
 H=Horizontal
 C.B.=Corner Bar
 S.DWL=Slab Dowel
 E.W.=Each Way
 B/BOT=Bottom
 T=Top
 MDWL=Masonry Dowel
 B.B.=Bond Beam
 ALT.=Alternate
 Approx.=Approximate

OPNG=Opening
 BAL=Balance
 BTW=Between
 CJ=Construction Joint
 CLR=CLEARANCE
 CMU=Concrete Masonry Unit
 CONT=Continuous
 EA=Each
 Elev=Elevation
 EMB=Embedment
 SW=Short Way
 LW=Long Way
 (BL)=Black Bar
 (EP)=Epoxy Bar
 (GA)=Galvanized

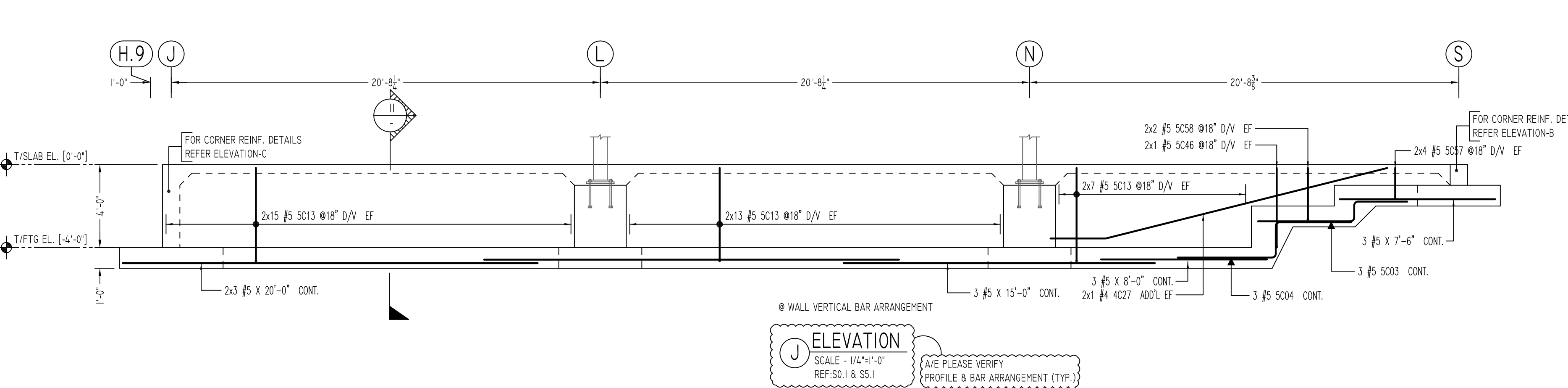
NOTICE

Shortages, improper fabrication or claims for any other reason must be reported to this company within a period of 15 days of delivery. This company reserves the right to field inspect prior to replacement or reconditioning of nonconforming material, and will not honor charges for work done in the field without specific authorization from this company.

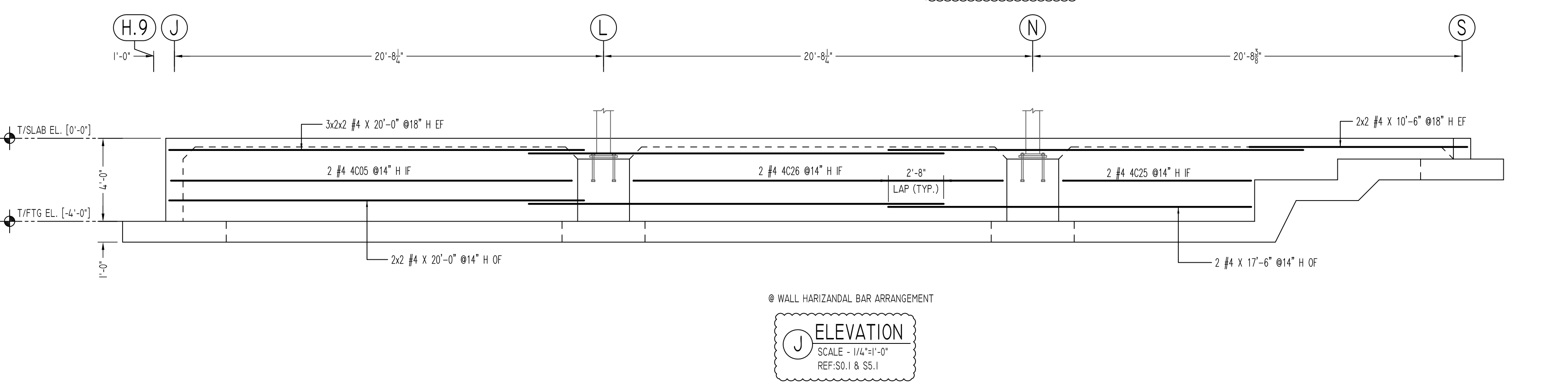
REINFORCING STEEL PLACING DRAWINGS ONLY USE IN CONJUNCTION WITH CONTRACT DRAWINGS & SPECIFICATIONS. ELEVATIONS & DIMENSIONS SHOWN ON THIS DRAWING ARE FOR DETAILING PURPOSES ONLY AND SHOULD NOT BE USED FOR CONSTRUCTION UNLESS VERIFIED BY ENGINEER OR CONTRACTOR.

REVISION MARK	REVISION DETAILS	DATE
0	FOR APPROVAL	08/09/2022

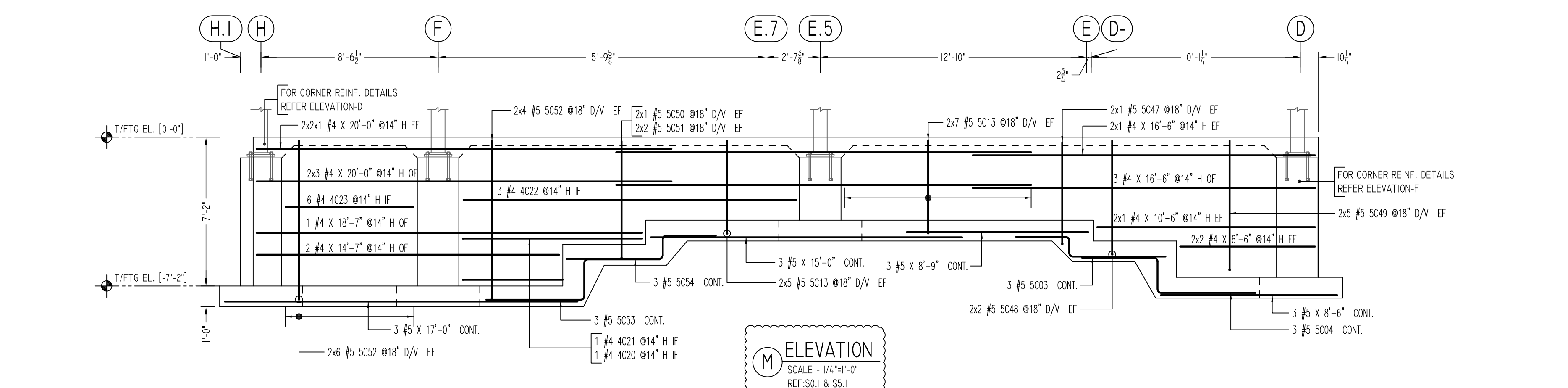
PROJECT	LATIMER LANE SCHOOL RENOVATION		
LOCATION	33 MOUNTAIN VIEW DRIVE WEATOGUE, CT 06089		
ARCHITECT	TECTON ARCHITECTS		
ENGINEER	MICHAEL HORTON ASSOCIATES, INC.		
CUSTOMER	---		
DRAWN BY:	GOW/MRS	DATE:	08/09/22
REVIEWED BY:	T/L	DATE:	---
JOB NO.	22065		
DRAWING NO.:	R08		



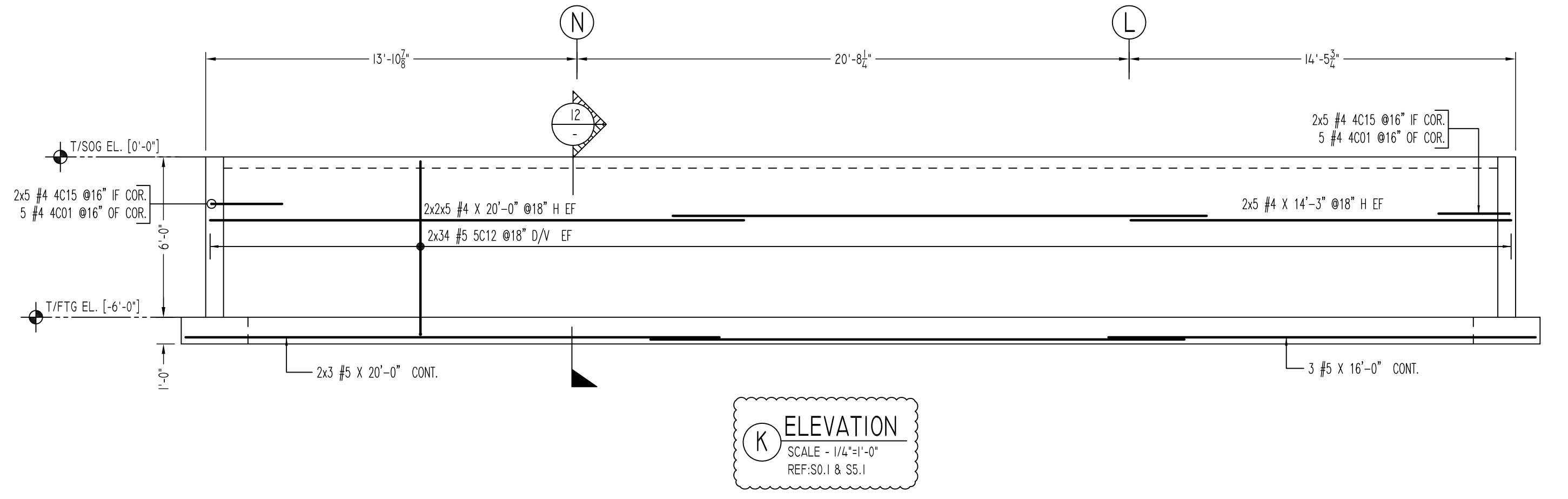
J ELEVATION
SCALE - 1/4"=1'-0"
REF.S0.1 & S5.1
A/E PLEASE VERIFY
PROFILE & BAR ARRANGEMENT (TYP.)



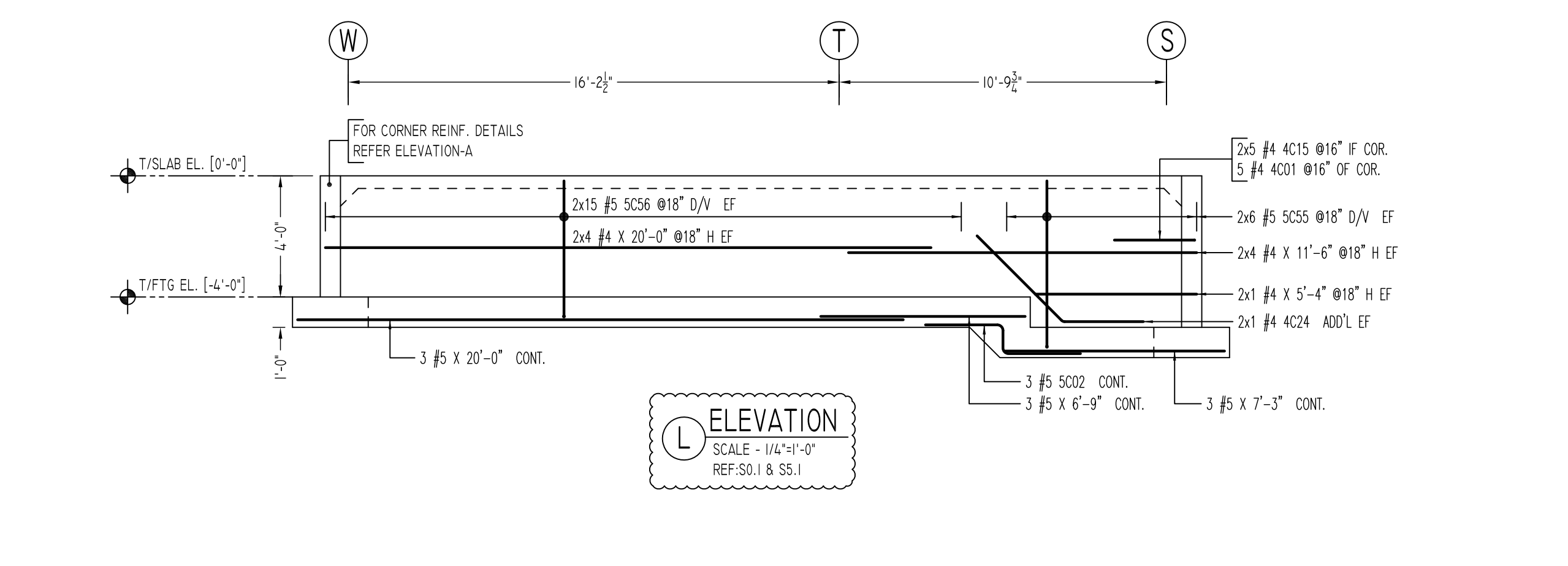
J ELEVATION
SCALE - 1/4"=1'-0"
REF.S0.1 & S5.1



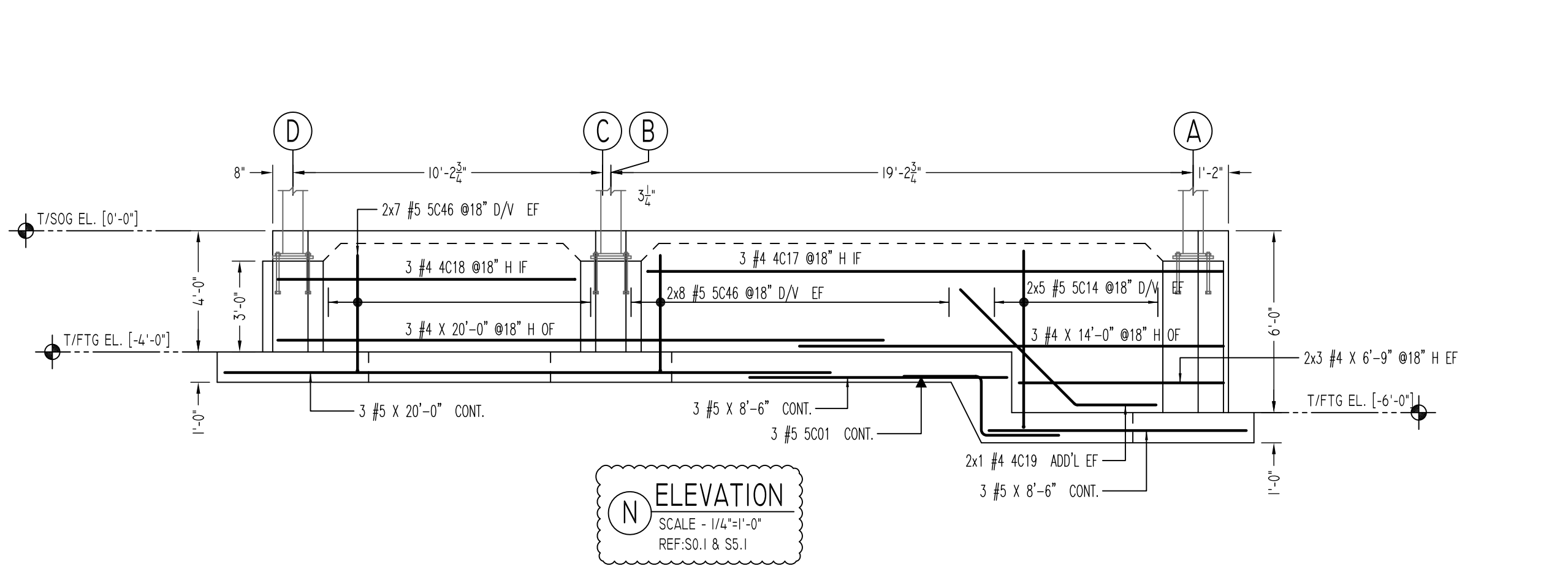
M ELEVATION
SCALE - 1/4"=1'-0"
REF.S0.1 & S5.1



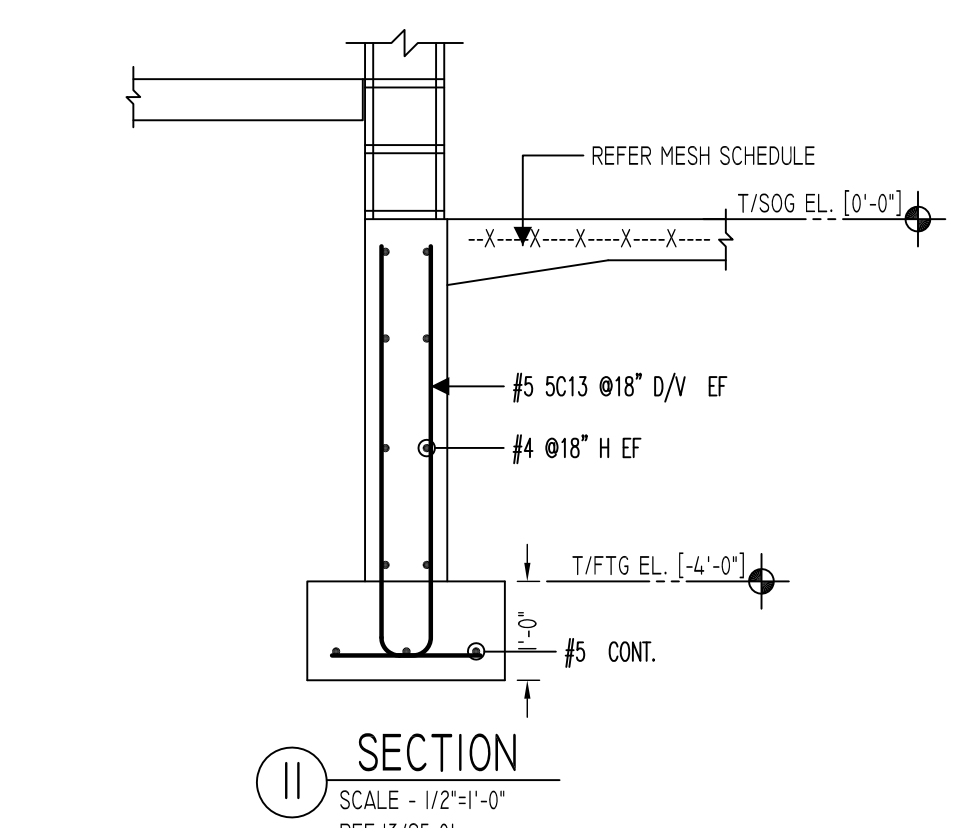
K ELEVATION
SCALE - 1/4"=1'-0"
REF.S0.1 & S5.1



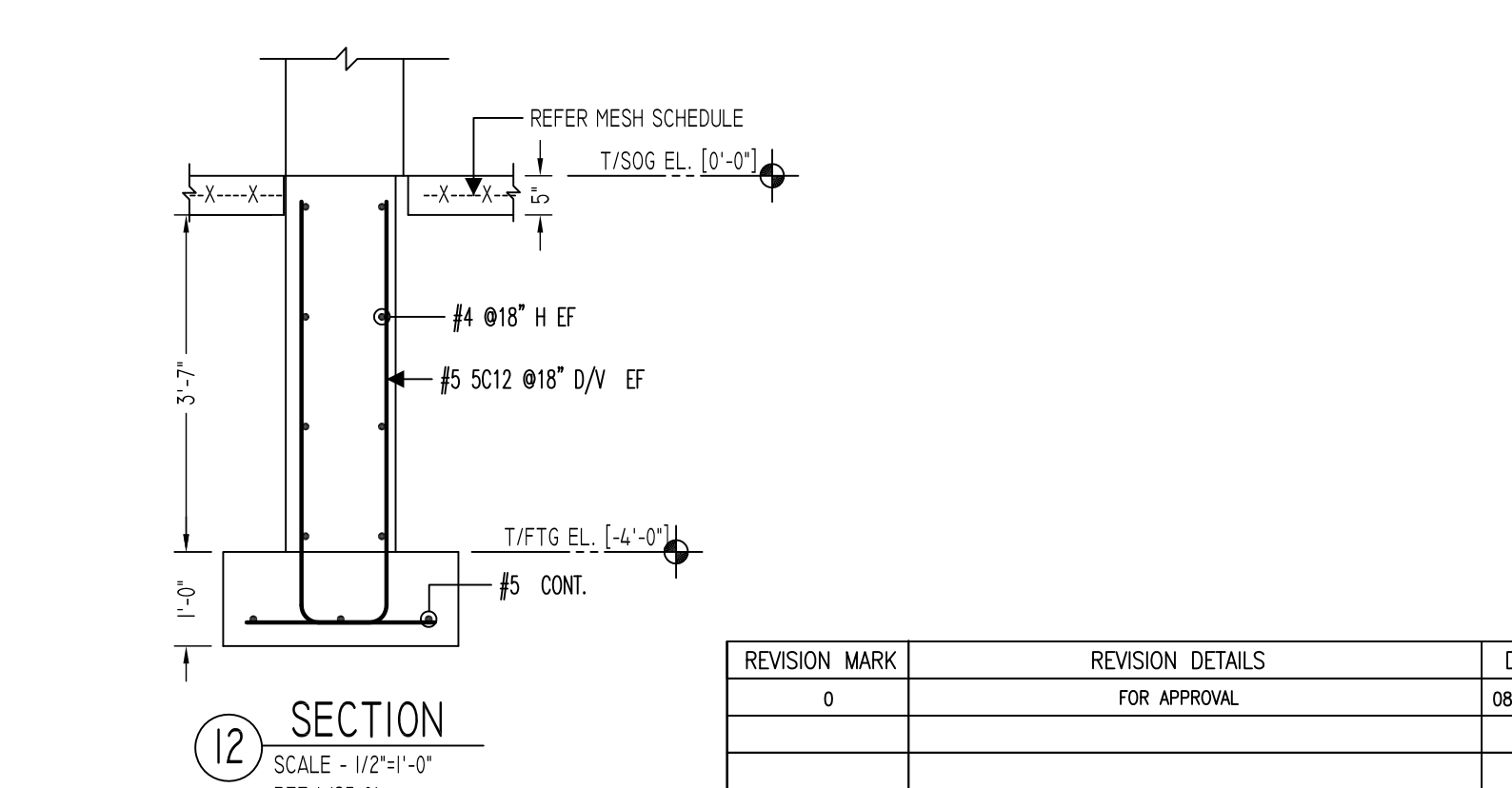
L ELEVATION
SCALE - 1/4"=1'-0"
REF.S0.1 & S5.1



N ELEVATION
SCALE - 1/4"=1'-0"
REF.S0.1 & S5.1



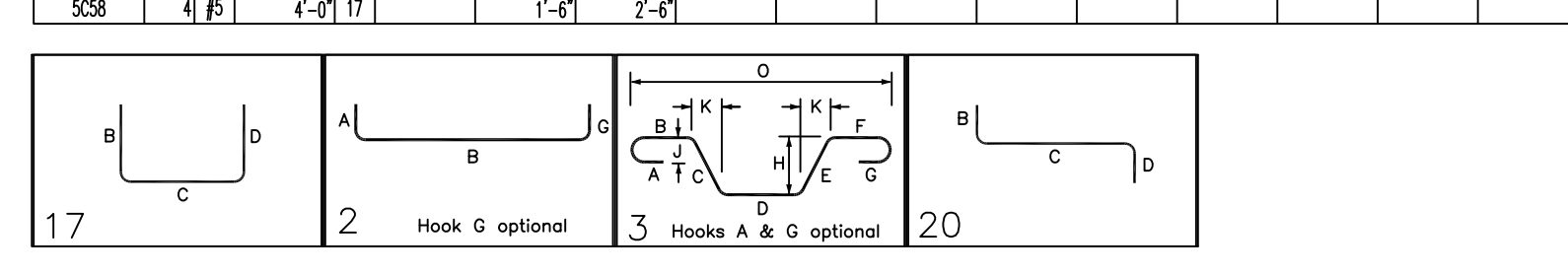
11 SECTION
SCALE - 1/2"=1'-0"
REF.S1/S5.01



12 SECTION
SCALE - 1/2"=1'-0"
REF.S1/S5.01

Release Number: R10

Bar Mark	Qty	Size	Total Length	Type	X'	Y'	Z'	X'	Y'	Z'	X'	Y'	Z'
4011	15	#4	5'-4"	17		2'-8"		2'-8"					
4055	2	#4	20'-0"	2	0'-8"	19'-4"							
4C15	30	#4	3'-4"	2	0'-8"	2'-8"							
4C17	3	#4	19'-8"	2	0'-8"	19'-0"							
4C18	3	#4	10'-6"	2	0'-8"	9'-10"							
4C19	2	#4	8'-0"	3	2'-8"	5'-4"			3'-10"	3'-9"	6'-5"		
4C20	1	#4	5'-6"	2	0'-8"	4'-10"							
4C21	1	#4	9'-4"	2	0'-8"	8'-8"							
4C22	3	#4	17'-5"	2	0'-8"	16'-1"			0'-8"				
4C23	6	#4	7'-8"	2	0'-8"	6'-2"							
4C24	2	#4	6'-7"	3	2'-8"	3'-11"			2'-10"	2'-9"	5'-5"		
4C25	2	#4	9'-9"	2	0'-8"	9'-1"							
4C26	2	#4	19'-2"	2	0'-8"	17'-10"			0'-8"				
4C27	2	#4	16'-7"	3	2'-8"	13'-11"			3'-5"	13'-6"	16'-2"		
5021	3	#5	7'-2"	20	2'-7"	2'-0"	2'-7"						
5022	3	#5	6'-2"	20	2'-7"	1'-0"	2'-7"						
5023	6	#5	8'-3"	20	2'-7"	1'-0"	4'-8"						
5024	6	#5	10'-2"	20	3'-8"	1'-0"	4'-9"						
5C12	68	#5	8'-6"	17	2'-0"	6'-8"							
5C13	94	#5	6'-0"	17	1'-8"	4'-8"							
5C14	10	#5	7'-4"	17	1'-8"	5'-10"							
5C46	32	#5	5'-4"	17	1'-8"	3'-10"							
5C47	2	#5	6'-5"	17	1'-8"	4'-11"							
5C48	4	#5	7'-0"	17	1'-8"	5'-8"							
5C49	10	#5	7'-9"	17	1'-8"	6'-3"							
5C50	2	#5	6'-3"	17	1'-8"	6'-9"							
5S51	4	#5	7'-2"	17	1'-8"	5'-8"							
5S52	20	#5	9'-2"	17	1'-8"	7'-8"							
5C53	3	#5	10'-5"	20	3'-8"	2'-0"	4'-8"						
5C54	3	#5	8'-5"	20	2'-7"	1'-2"	4'-8"						
5C55	12	#5	7'-6"	17	2'-0"	5'-8"							
5C56	30	#5	6'-6"	17	2'-0"	4'-8"							
5C57	8	#5	3'-0"	17	1'-8"	1'-8"							
5C58	4	#5	4'-0"	17	1'-8"	2'-8"							



A/E PLEASE VERIFY LAP VALUE

A/E PLEASE VERIFY COVER VALUE

TYPICAL REINFORCING BAR CLEARANCE TABLE

LOCATION	MIN. COVER
FOOTING TOP	2" CLR
FOOTING TOP SIDE & BOTTOM	3" CLR

LAP SCHEDULE

SIZE	TOP	OTHERS
#3	24"	19"
#4	32"	25"
#5	40"	31"
#6	48"	37"
#7	70"	54"
#8	80"	62"
#9	91"	70"
#10	102"	79"
#11	115"	87"

Abbreviations:
I.F.=Inside Face
O.F.=Outside Face
E.F.=Each Face
DWL=Dowel
V=Vertical
H=Horizontal
C.B.=Corner Bar
S.DWL=Slab Dowel
E.W.=Each Way
B/BOT=Bottom
T=Top
MDWL=Masonry Dowel
B.B.=Bond Beam
ALT.=Alternate
Approx.=Approximate

OPNG=Opening
BAL=Balance
BTW=Between
CJ=Construction Joint
CLR=CLEARANCE
CMU=Concrete Masonry Unit
CONT.=Continuous
EA=Each
Elev.=Elevation
EMB=Embedment
SW=Short Way
LW=Long Way
(BL)=Black Bar
(EP)=Epoxy Bar
(GA)=Galvanized

NOTICE

Shortages, improper fabrication or claims for any other reason must be reported to this company within a period of 15 days of delivery. This company reserves the right to field inspect prior to replacement or reconditioning of nonconforming material, and will not honor charges for work done in the field without specific authorization from this company.

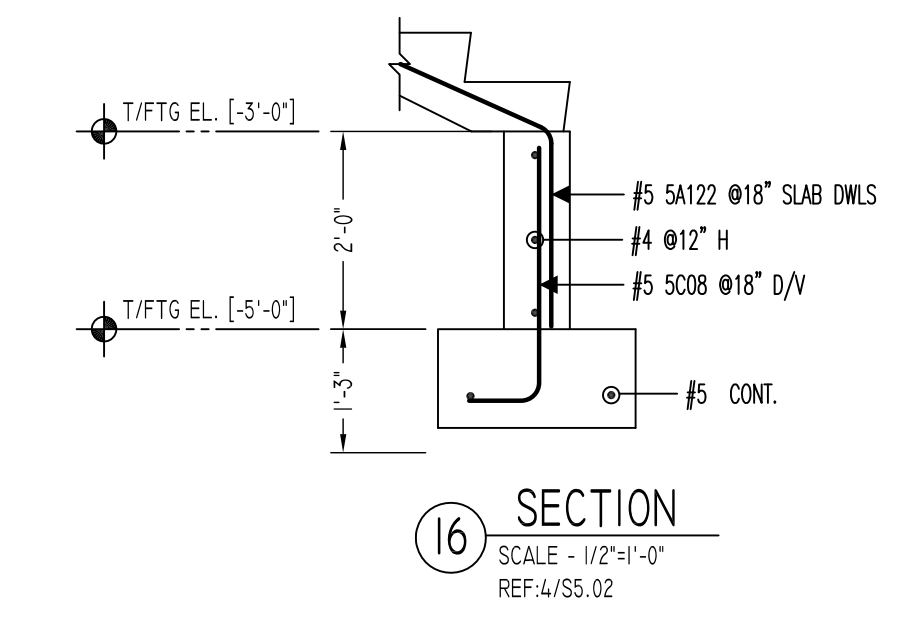
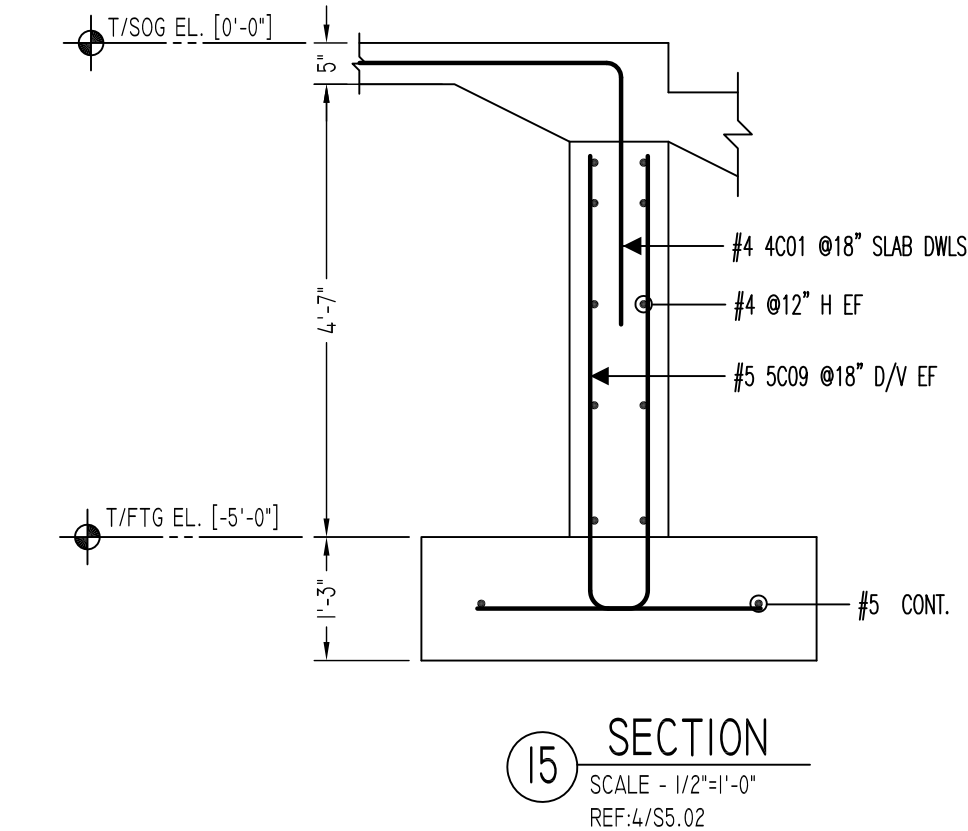
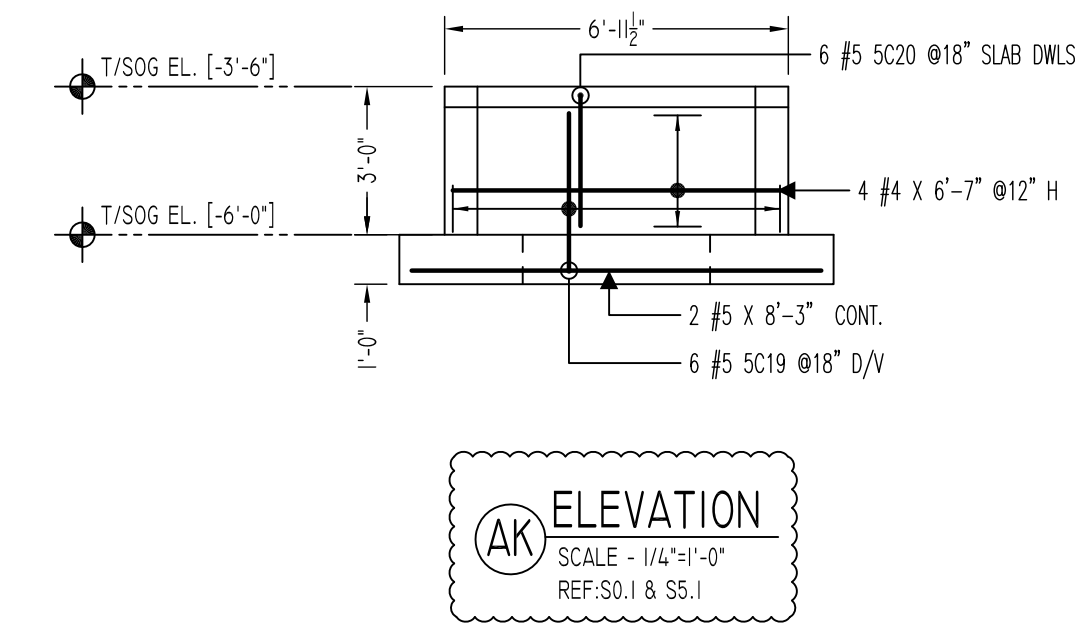
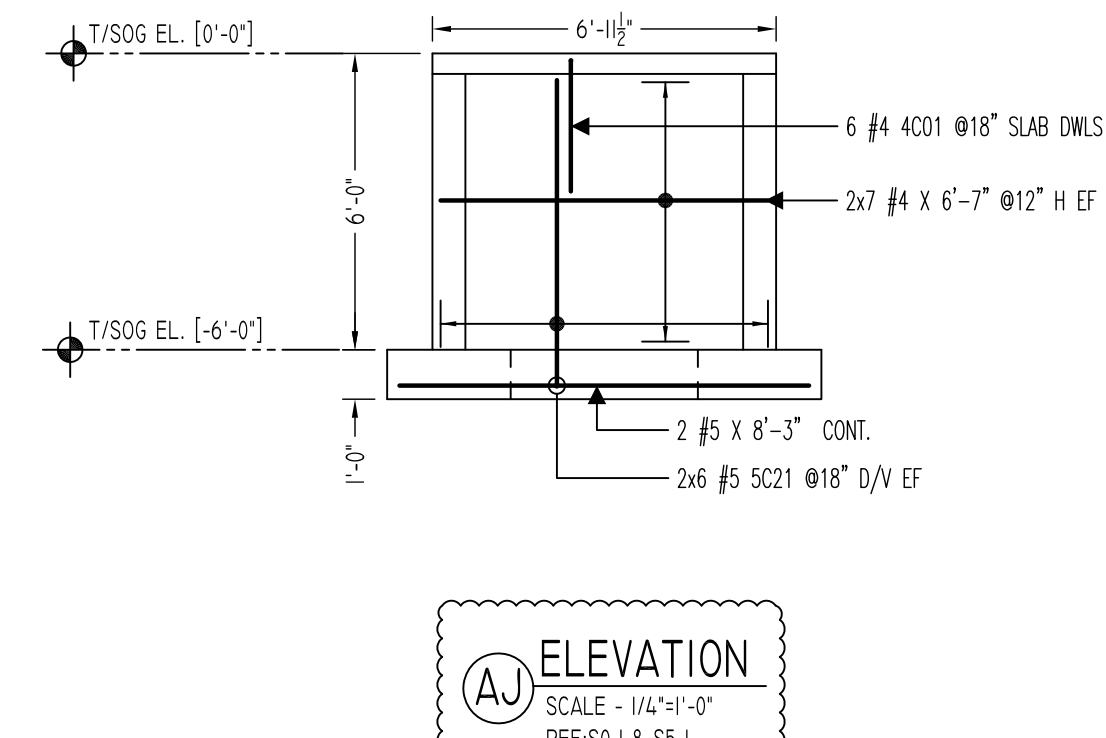
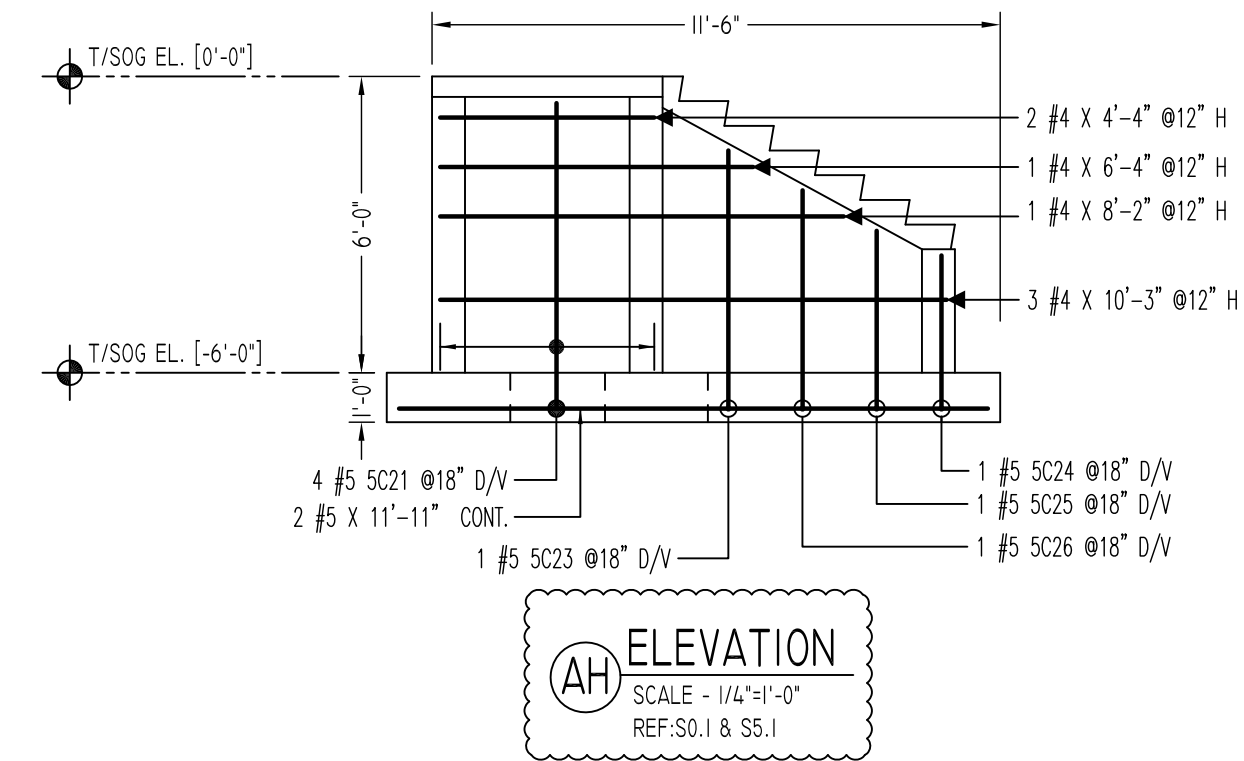
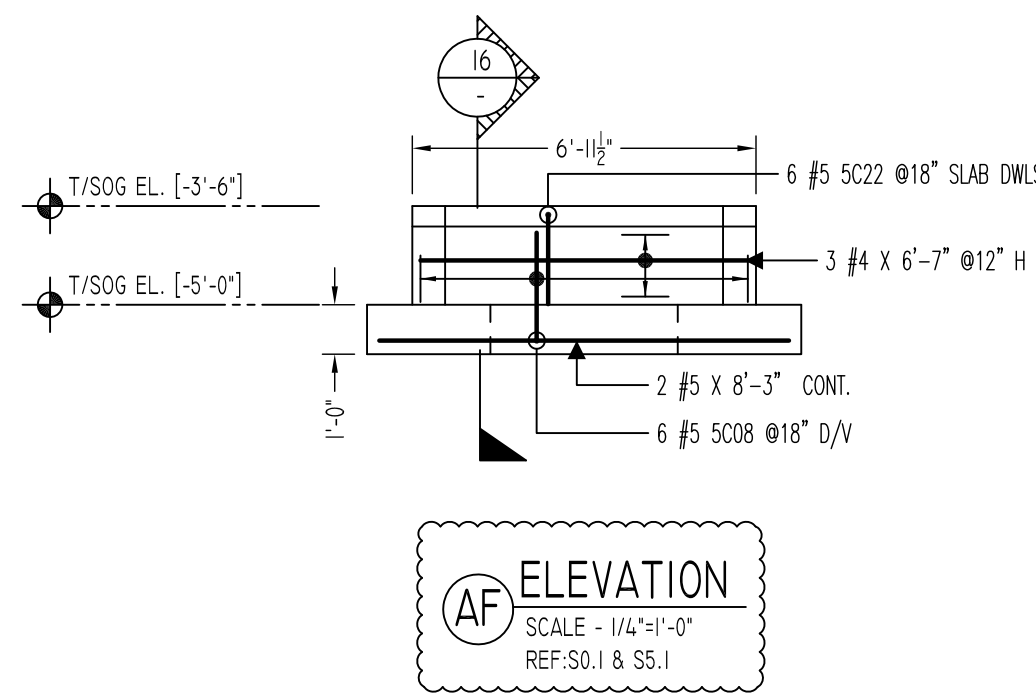
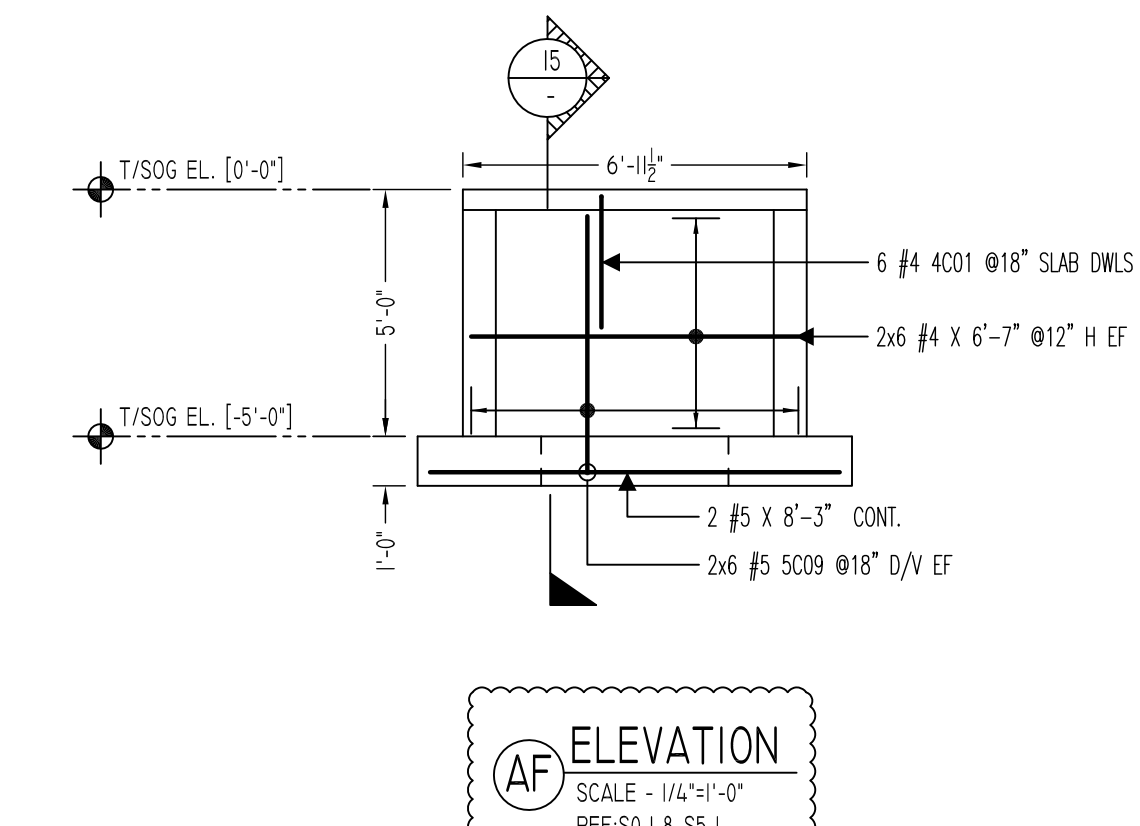
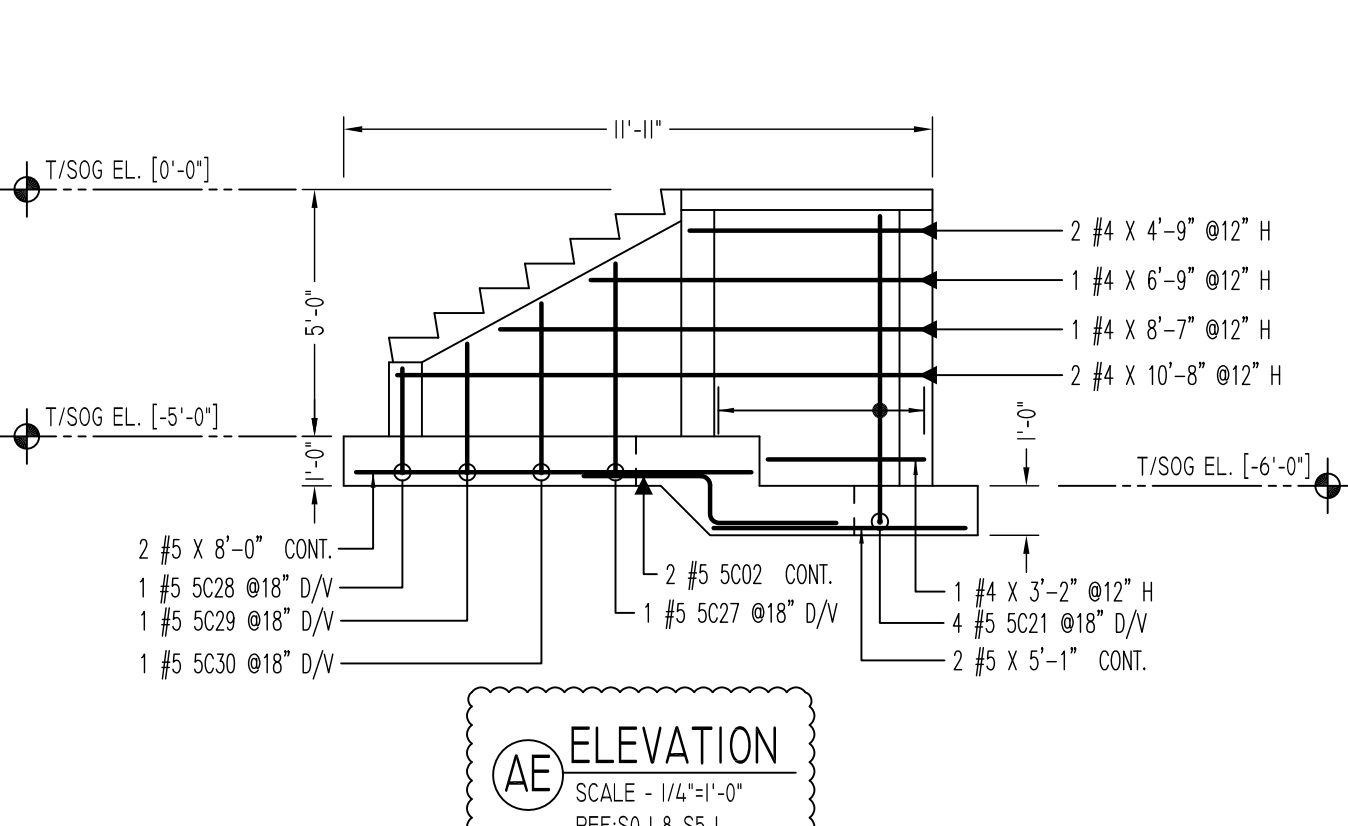
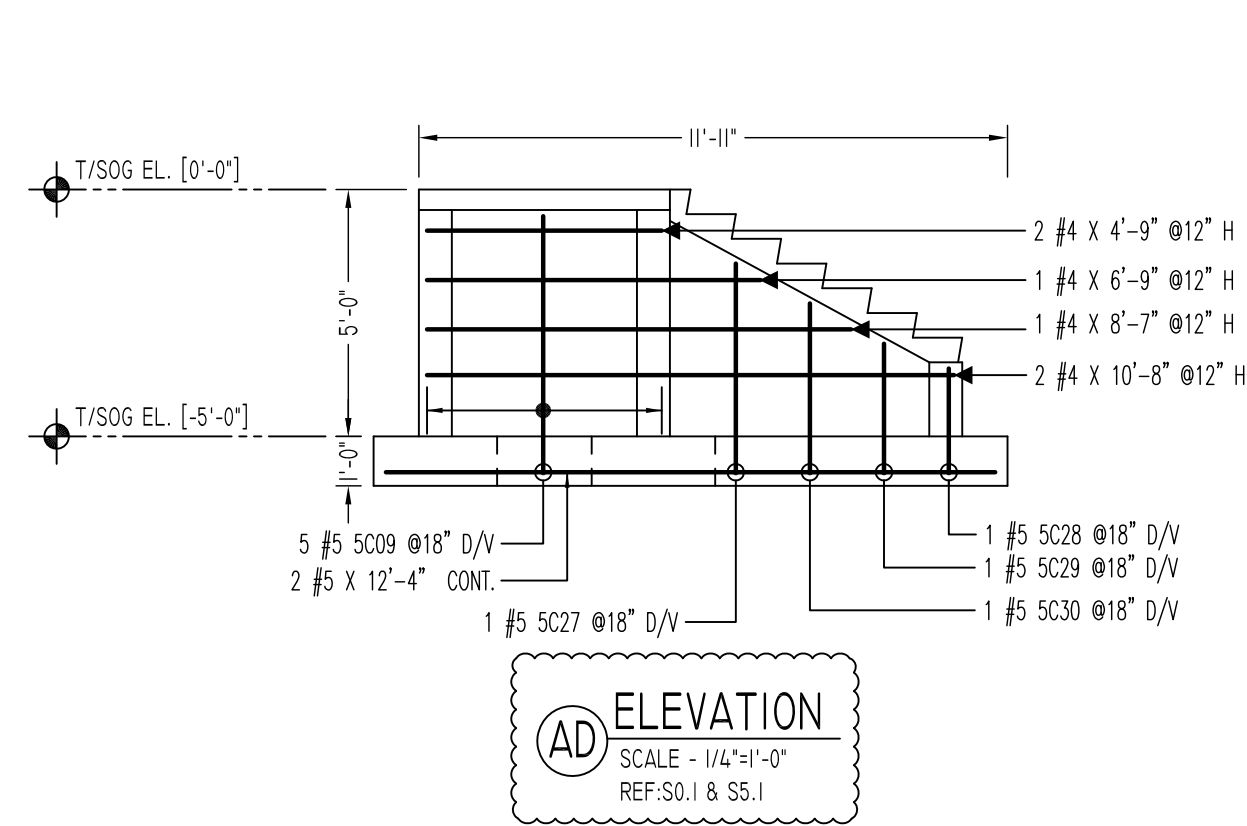
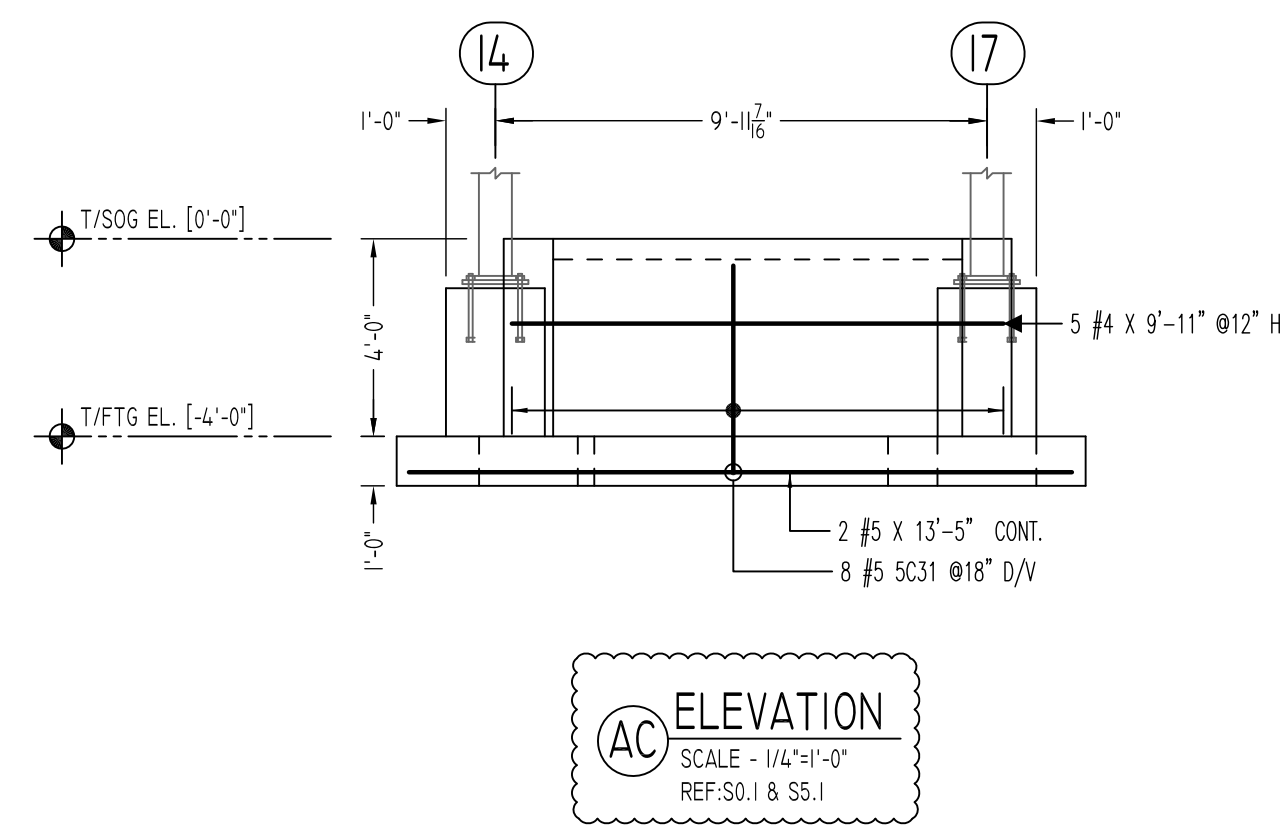
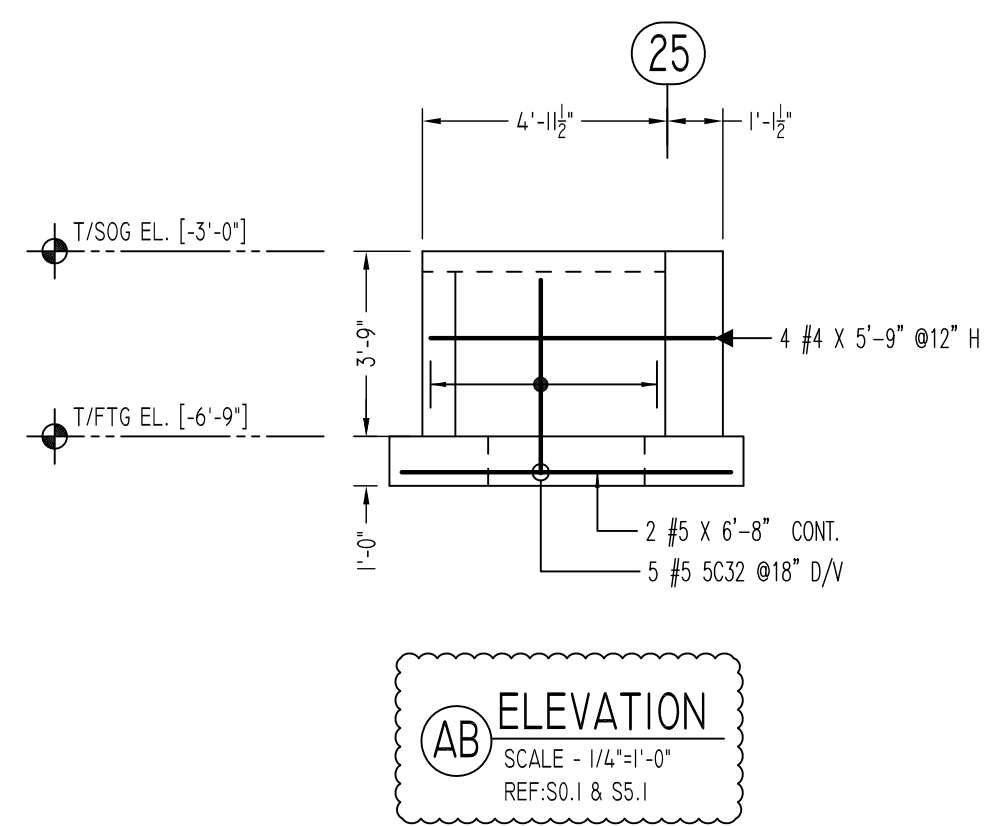
REINFORCING STEEL PLACING DRAWINGS ONLY USE IN CONJUNCTION WITH CONTRACT DRAWINGS & SPECIFICATIONS. ELEVATIONS & DIMENSIONS SHOWN ON THIS DRAWING ARE FOR DETAILING PURPOSES ONLY AND SHOULD NOT BE USED FOR CONSTRUCTION UNLESS VERIFIED BY ENGINEER OR CONTRACTOR.

REVISION MARK	REVISION DETAILS	DATE
0	FOR APPROVAL	08/09/2022

PROJECT	LATIMER LANE SCHOOL RENOVATION
LOCATION	33 MOUNTAIN VIEW DRIVE WEATOGUE, CT 06089
ARCHITECT	TECTON ARCHITECTS
ENGINEER	MICHAEL HORTON ASSOCIATES, INC.
CUSTOMER	

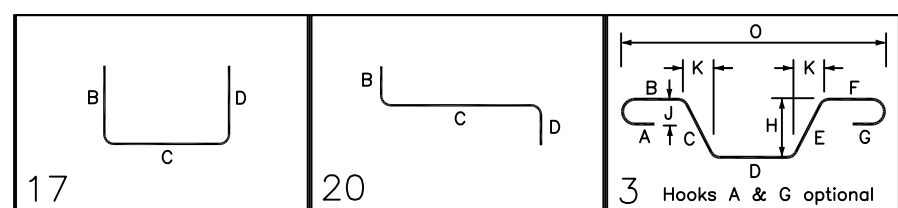
DRAWN BY:	DATE:	REVIEWED BY:	JOB NO.
GOW/MRS	08/09/22	T/L	22065

DRAWING TITLE:	DRAWING NO.:
AREA-B FOOTING & FOUNDATION WALL REINFORCEMENT DETAILS	R10



Rebar Number: R12

Bar Mark	Qty	Size	Total Length	Type	X	Y	Z	X	Y	Z	X	Y	Z	X	Y	Z
4C01	12	#4	5'-4"	17				2'-8"	2'-8"							
5C02	2	#5	6'-2"	20				2'-7"	1'-0"	2'-7"						
5C08	6	#5	5'-8"	17				3'-6"	2'-2"							
5C09	17	#5	8'-8"	17				3'-6"	5'-2"							
5C19	6	#5	6'-8"	17				3'-6"	3'-2"							
5C20	4	#5	5'-5"	3				2'-8"	2'-8"			2'-8"		0'-8"	3'-5"	
5C21	20	#5	9'-8"	17				3'-6"	8'-2"							
5C22	6	#5	4'-7"	3				2'-8"	1'-11"			1'-10"		0'-8"	3'-5"	
5C23	1	#5	8'-9"	17				3'-6"	5'-3"							
5C24	1	#5	6'-7"	17				3'-6"	3'-1"							
5C25	1	#5	7'-1"	17				3'-6"	3'-7"							
5C26	1	#5	7'-11"	17				3'-6"	4'-5"							
5C27	2	#5	7'-9"	17				3'-6"	4'-3"							
5C28	2	#5	5'-7"	17				3'-6"	2'-1"							
5C29	2	#5	6'-1"	17				3'-6"	2'-2"							
5C30	2	#5	6'-11"	17				3'-6"	3'-5"							
5C31	8	#5	7'-8"	17				3'-6"	4'-2"							
5C32	9	#5	7'-5"	17				3'-6"	3'-11"							



LAP SCHEDULE

SIZE	TOP	OTHERS
#3	24"	19"
#4	32"	25"
#5	40"	31"
#6	48"	37"
#7	70"	54"
#8	80"	62"
#9	91"	70"
#10	102"	79"
#11	115"	87"

TYPICAL REINFORCING BAR CLEARANCE TABLE

LOCATION	MIN. COVER
FOOTING TOP	2" CLR
FOOTING TOP SIDE & BOTTOM	3" CLR

Abbreviations:
 I.F.=Inside Face
 O.F.=Outside Face
 E.F.=Each Face
 DWL=Dowel
 V=Vertical
 H=Horizontal
 C.B.=Corner Bar
 S.DWL=Slab Dowel
 E.W.=Each Way
 B/BOT.=Bottom
 T=Top
 MDWL=Masonry Dowel
 B.B.=Bond Beam
 ALT.=Alternate
 Approx.=Approximate

OPNG=Opening
 BAL.=Balance
 BTW.=Between
 C.=Construction Joint
 CLR.=CLEARANCE
 CMU=Concrete Masonry Unit
 CONT.=Continuous
 EA.=Each
 Elev.=Elevation
 EMB.=Embedment
 SW=Short Way
 LW=Long Way
 (BL)=Black Bar
 (EP)=Epoxy Bar
 (GA)=Galvanized

NOTICE

Shortages, improper fabrication or claims for any other reason must be reported to this company within a period of 15 days of delivery. This company reserves the right to field inspect prior to replacement or reconditioning of nonconforming material, and will not honor charges for work done in the field without specific authorization from this company.

REINFORCING STEEL PLACING DRAWINGS ONLY USE IN CONJUNCTION WITH CONTRACT DRAWINGS & SPECIFICATIONS. ELEVATIONS & DIMENSIONS SHOWN ON THIS DRAWING ARE FOR DETAILING PURPOSES ONLY AND SHOULD NOT BE USED FOR CONSTRUCTION UNLESS VERIFIED BY ENGINEER OR CONTRACTOR.

REVISION MARK	REVISION DETAILS	DATE
0	FOR APPROVAL	08/09/2022

PROJECT	LATIMER LANE SCHOOL RENOVATION		
LOCATION	33 MOUNTAIN VIEW DRIVE WEATOGUE, CT 06089		
ARCHITECT	TECTON ARCHITECTS		
ENGINEER	MICHAEL HORTON ASSOCIATES, INC.		
CUSTOMER	---		
DRAWN BY:	GOW/MRS	DATE:	08/09/22
REVIEWED BY:	T/L	JOB NO.:	22065
DRAWING TITLE:	AREA-B FOOTING & FOUNDATION WALL REINFORCEMENT DETAILS		DRAWING NO.:
			R12

