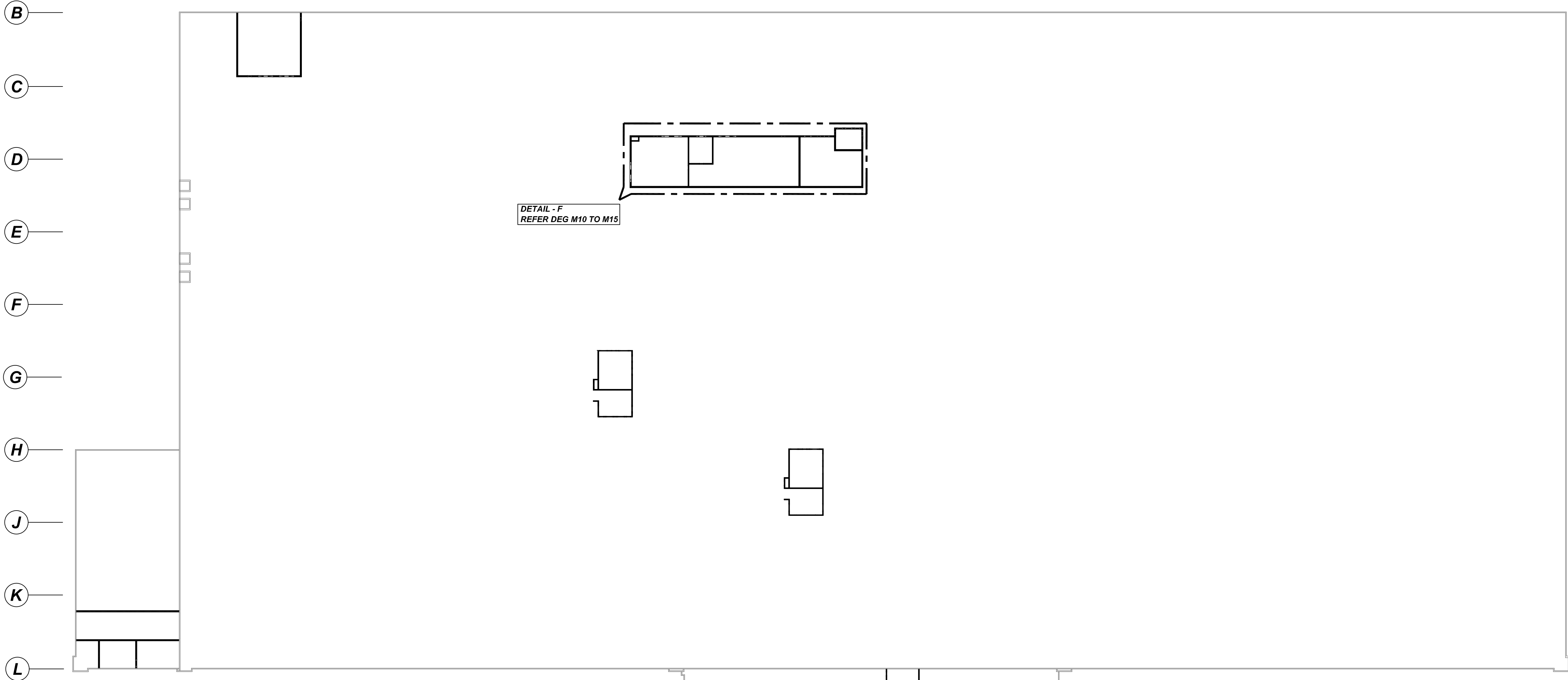
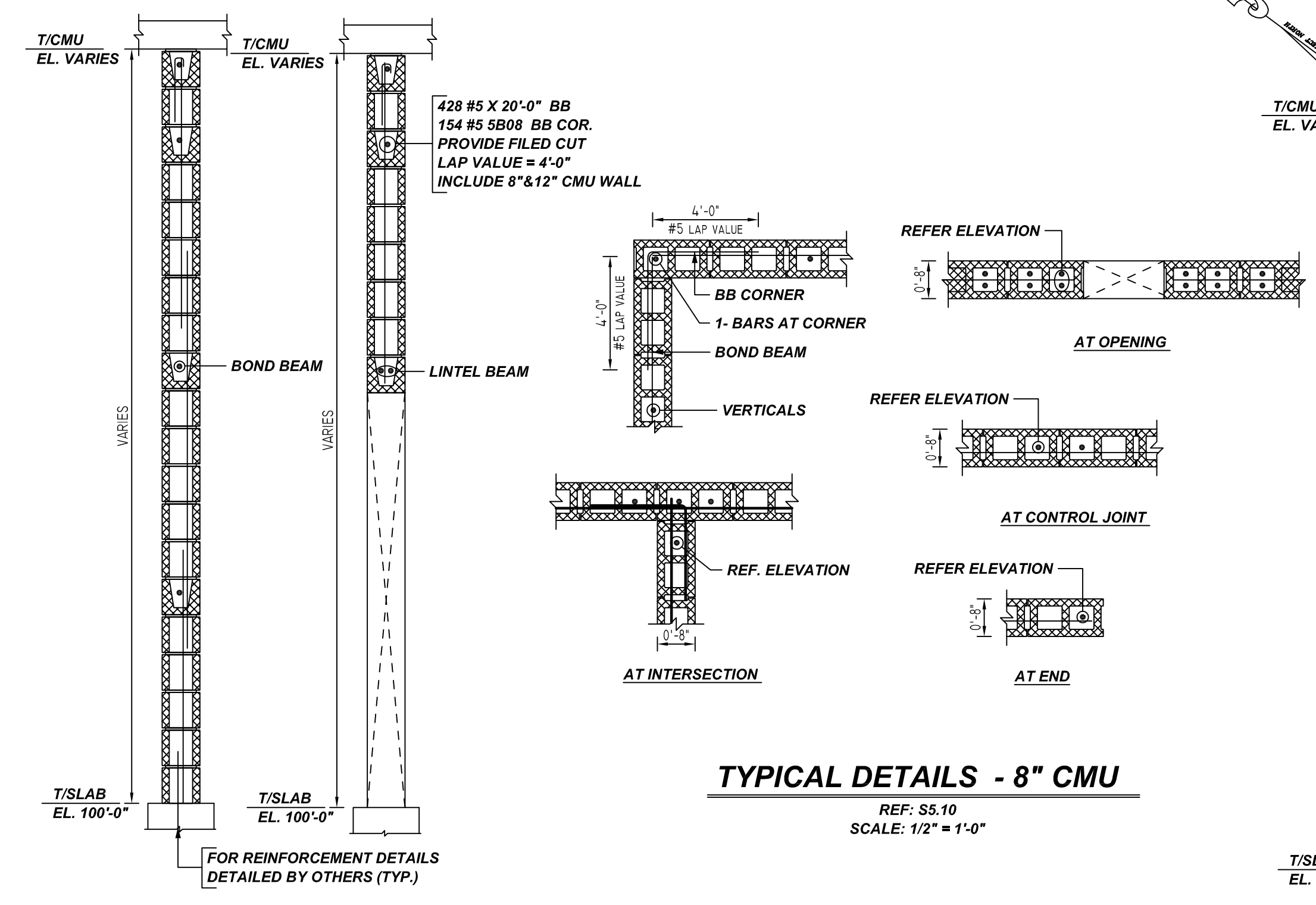


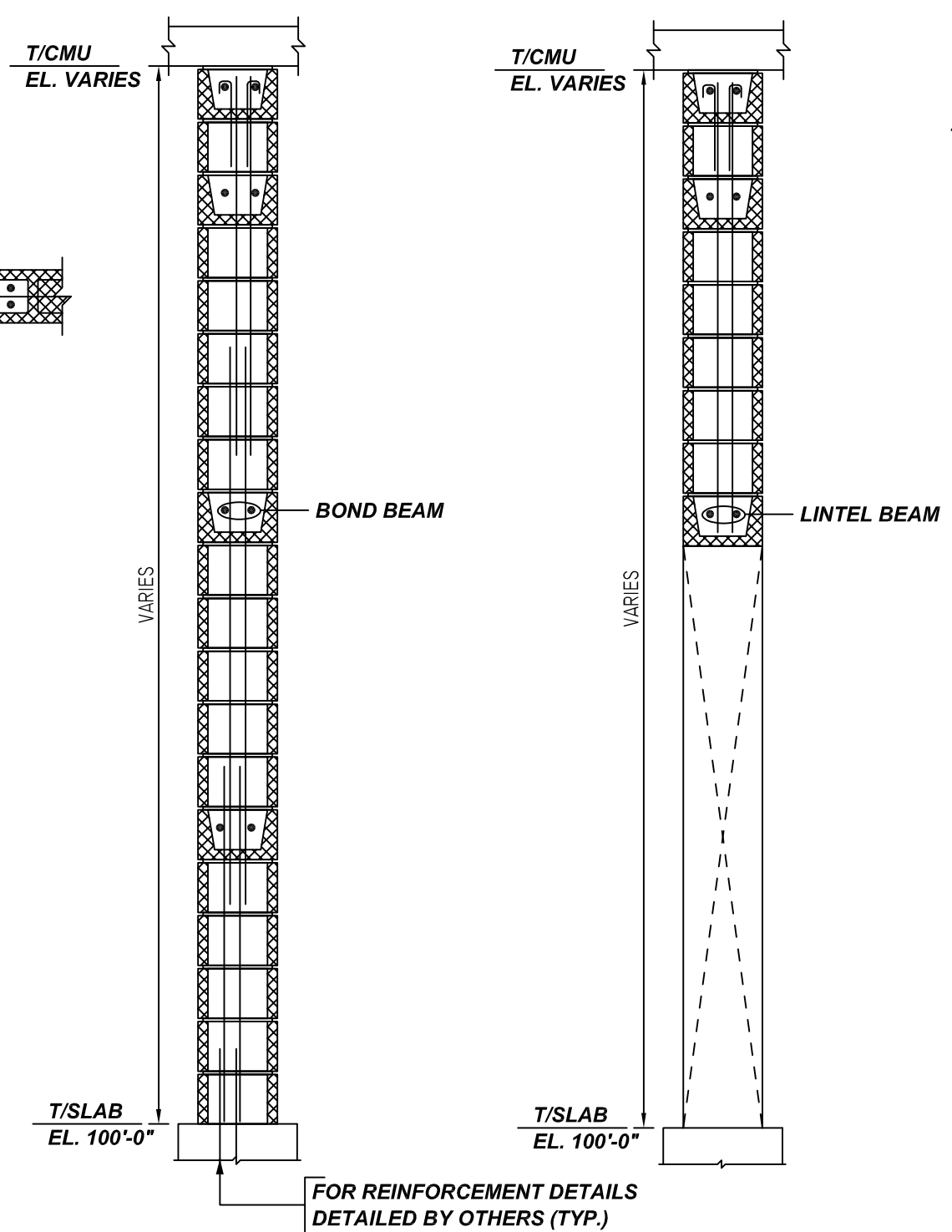
1 2 3 4 5 6 7 8 9 10 11 12 13 14 15 16 17 18 19 20 21 22



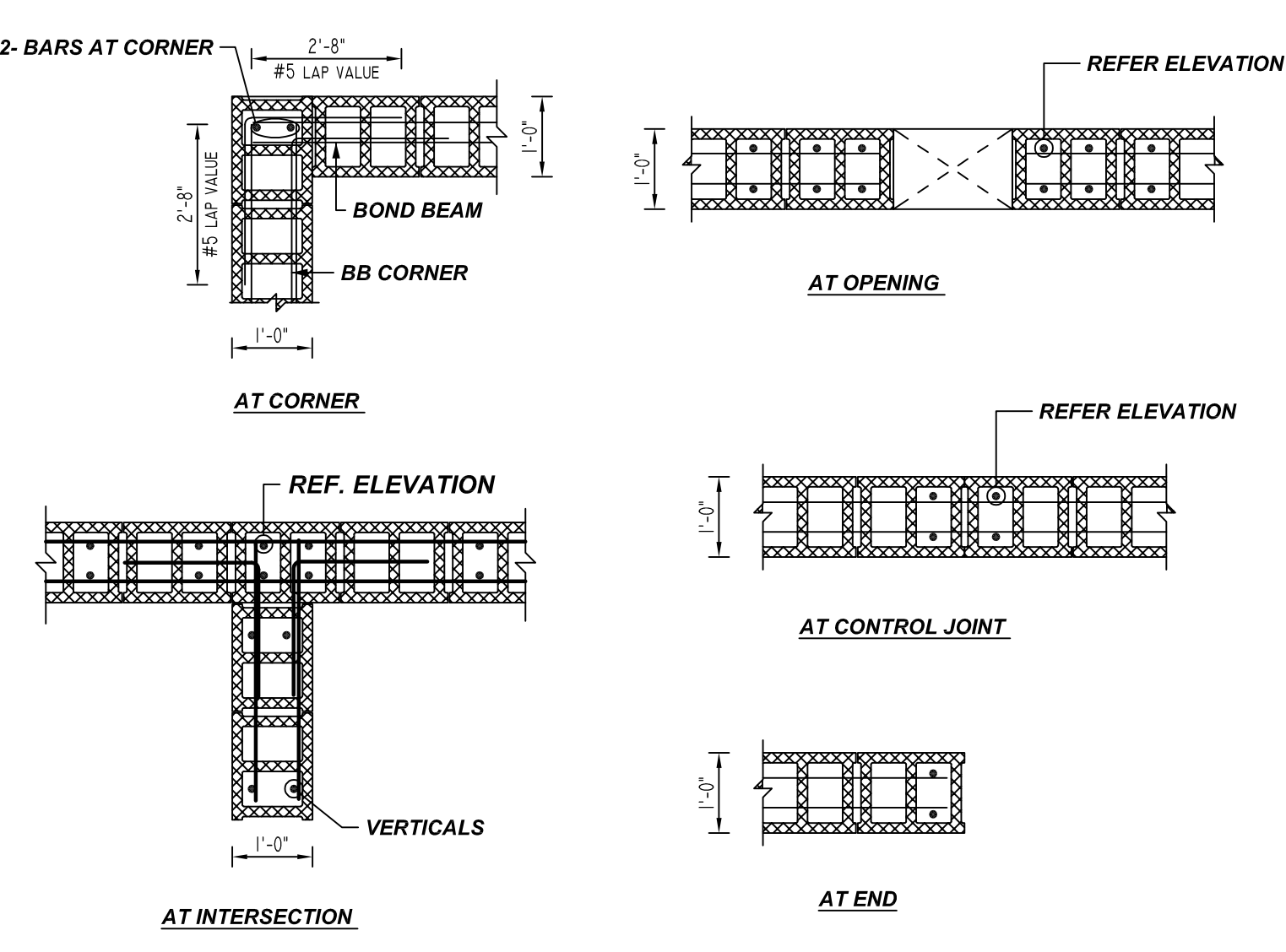
CMU WALL KEY PLAN
REF: A2.0A
SCALE: 1/48" = 1'-0"



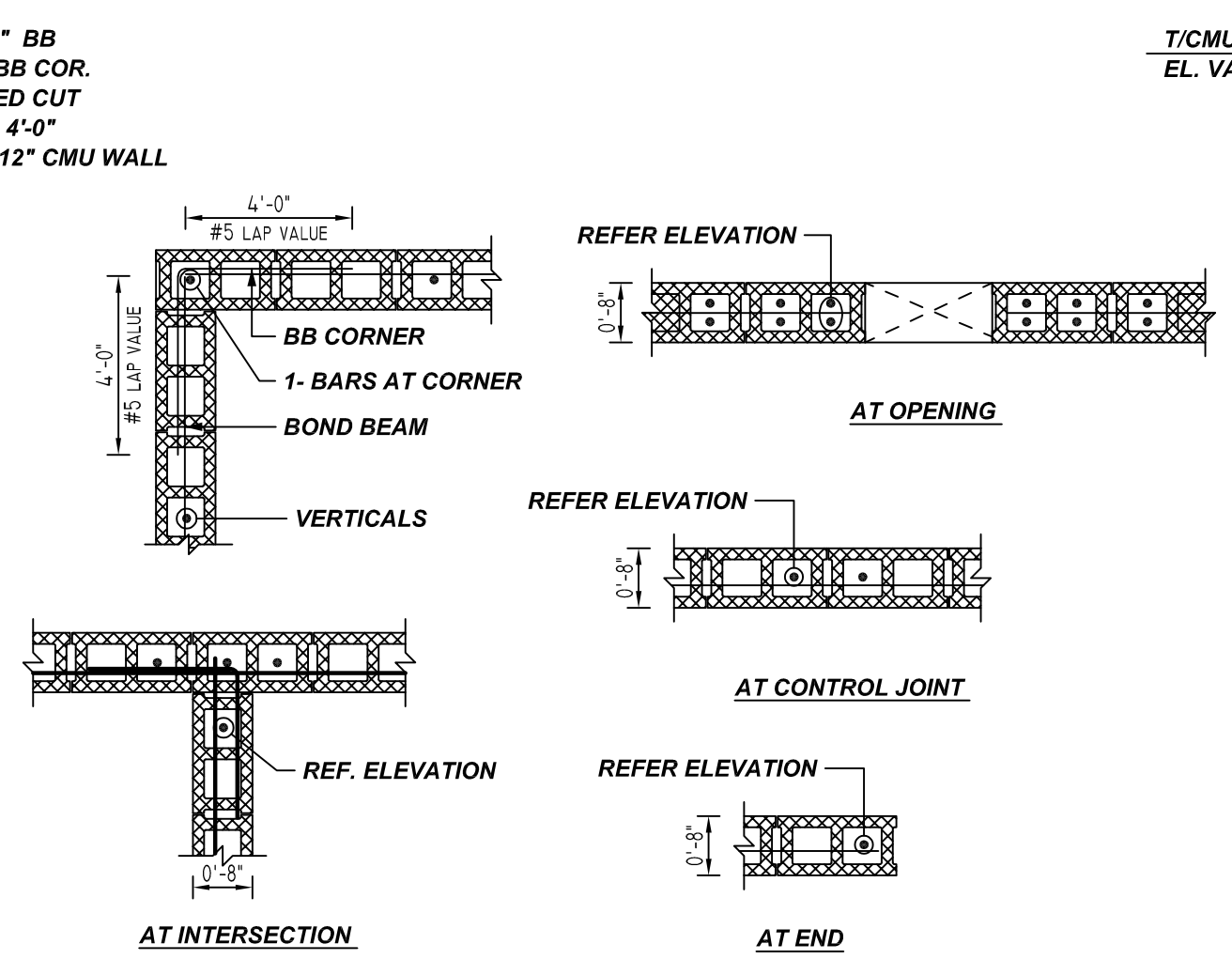
TYPICAL SECTION - 8" CMU
REF: S5.10
SCALE: 1/2" = 1'-0"



TYPICAL SECTION - 12" CMU
REF: S5.10
SCALE: 1/2" = 1'-0"

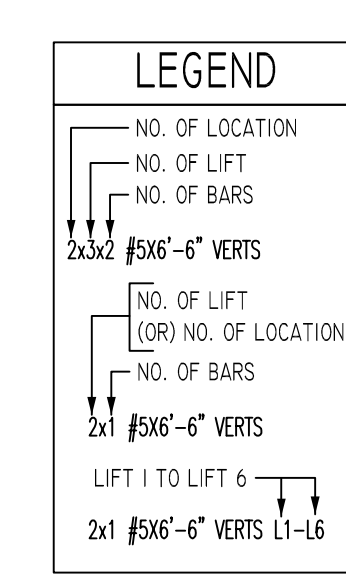


TYPICAL DETAILS - 12" CMU
REF: S5.10
SCALE: 1/2" = 1'-0"



TYPICAL DETAILS - 8" CMU
REF: S5.10
SCALE: 1/2" = 1'-0"

Release Number: M09							BENDING DETAILS																		
Bar Mark	Qty	Size	Total Length	Type	X	Y	Z	1	2	3	4	5	6	7	8	9	10	11	12	13	14	15	16	17	
5B08	154	#5	8'-0"	17																					



LAP SCHEDULE

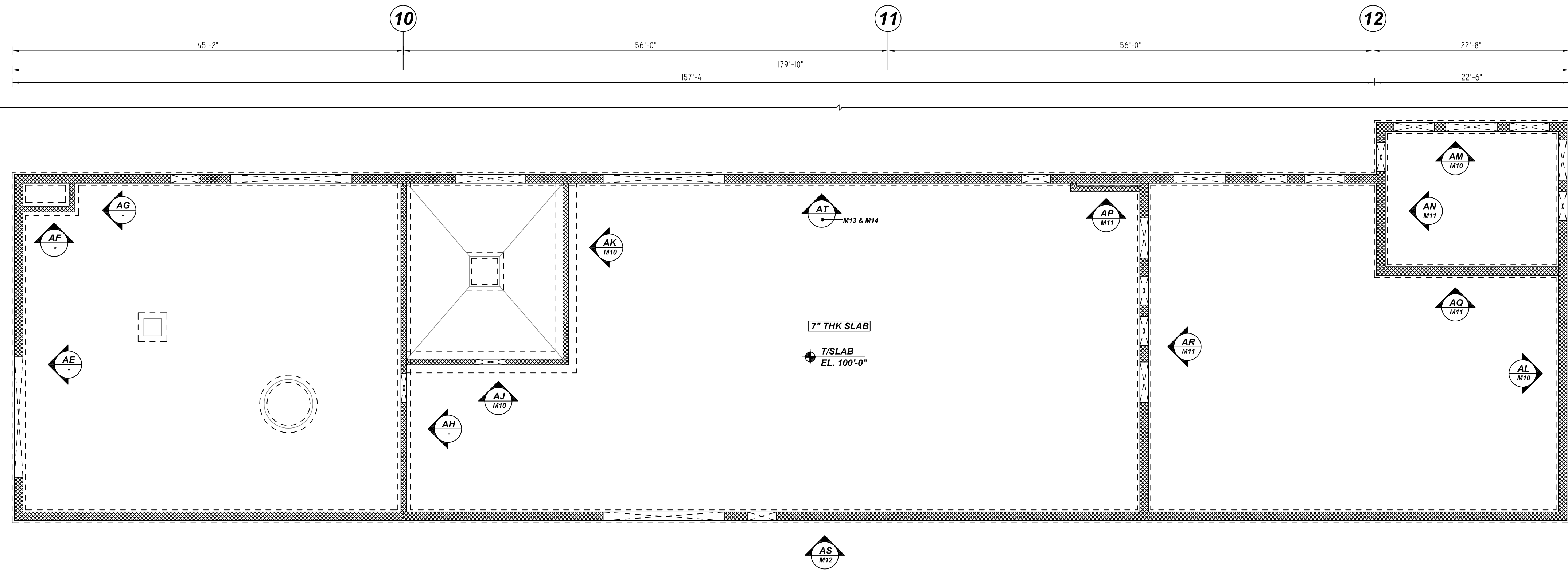
BAR#	LENGTHS
#3	20"
#4	26"
#5	32"
#6	39"
#7	45"
#8	52"

**ALL BARS IN THIS DRAWING
ASTM A615 GRADE 60
BLACK UNCOATED**

TYPICAL REINFORCING BAR CLEARANCE TABLE	
LOCATION	MIN. COVER
WALL TOP & SIDE	2" CLR

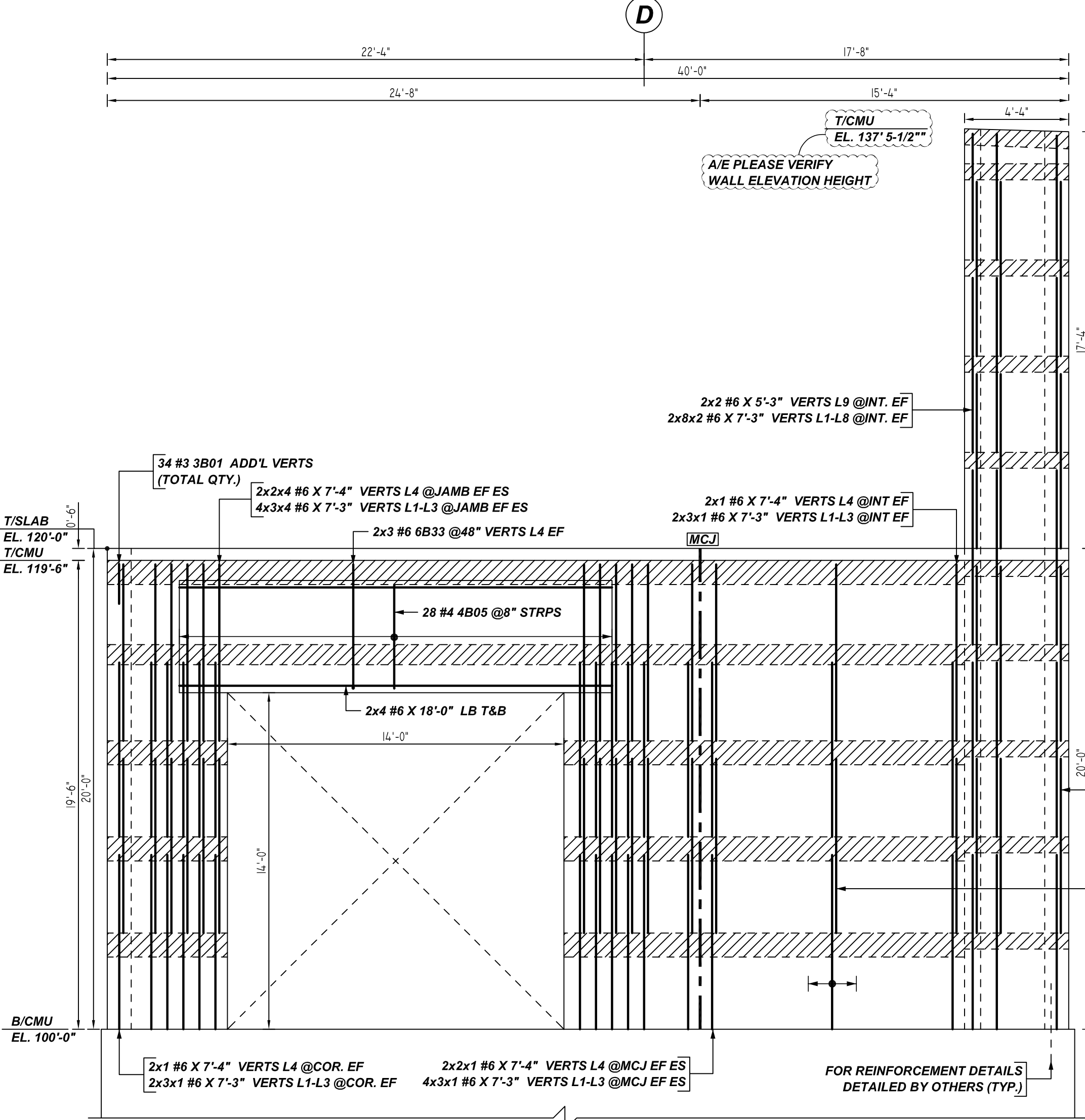
- PLACING PLAN NOTES**
- THIS DRAWINGS FOR REBAR PLACEMENT ASSISTANCE ONLY, REFER TO STRUCTURAL DETAILS FOR CONTRACT REQUIREMENTS
 - SECTIONS/DETAILS/DIMENSIONS ON PLACING PLAN ARE FOR REFERENCE AND ARE TO BE USED IN CONJUNCTION WITH CONTRACT DRAWING FOR CRSI MANUAL OF STANDARD PRACTICE
 - REINFORCING STEEL IS DETAILED PER CONTRACT DOCUMENTS ONLY AS SHOWN CODE COMPLIANCE REQUIREMENTS ARE THE RESPONSIBILITY OF ENGINEER AND/OR CONTRACTOR
 - THE CONTRACTOR UNDERSTANDS THAT THE ENGINEER SHOULD ALWAYS VERIFY SHOP DRAWINGS IF TIME DOES NOT ALLOW FOR APPROVALS, TEXAS REBAR IS NOT HELD RESPONSIBLE FOR UNAPPROVED SHOP DRAWINGS USED IN PLACING CRSI MANUAL OF STANDARD PRACTICE THE CUSTOMER AND ENGINEER SHOULD REVIEW SHOP DRAWINGS PRIOR TO INSTALLATION TO VERIFY ACCURACY TO STRUCTURAL DRAWINGS.
- PLACING PLAN NOTES**
- DIMENSIONS ELEVATIONS & DRAWINGS SCALES SHOWN ARE FOR REFERENCE ONLY CONTRACTOR TO PROVIDE LINES, GRADES & TEMPLATES REQUIRED FOR PLACEMENTS
 - SECTIONS & DETAILS MAY NOT BE SHOWN ON ALL PLACING PLANS. KEEP STRUCTURAL DRAWINGS ON SITE FOR USE
 - SOME LAP LENGTHS WILL BE ROUNDED UP IN DETAILING TO PROVIDE FOR 1" INCREMENTS FOR LAPS
 - LAP OR EMBEDMENT LENGTHS SHOWN IN SPECIFIC DETAILS WILL SUPPRESS LAPS IN THE LAP SCHEDULE
 - VERIFY PLACEMENT DRAWINGS TO LATEST ISSUE OF JOB RECORD DRAWING FOR POSSIBLE REVISIONS OR FIELD CHANGES
 - TYPICAL NOTES & DETAILS ARE USED THROUGHOUT ENTIRE PROJECT & APPLY UNLESS NOTED OTHERWISE

REVISION	NO.	DESCRIPTION	DATE	BY	CHKD.	APP.	JOB NAME: GREEN BAY PACKAGING	
							JOB NO: 22089	DATE: 07-18-22
0	FOR APPROVAL						DETAILS OF: CMU WALL REINFORCEMENT DETAILS	DATE: 07-18-22
1							DETAILER: VGS/SSSTR	DRWG: M09
TEXAS REBAR, LLC 817-487-1672								



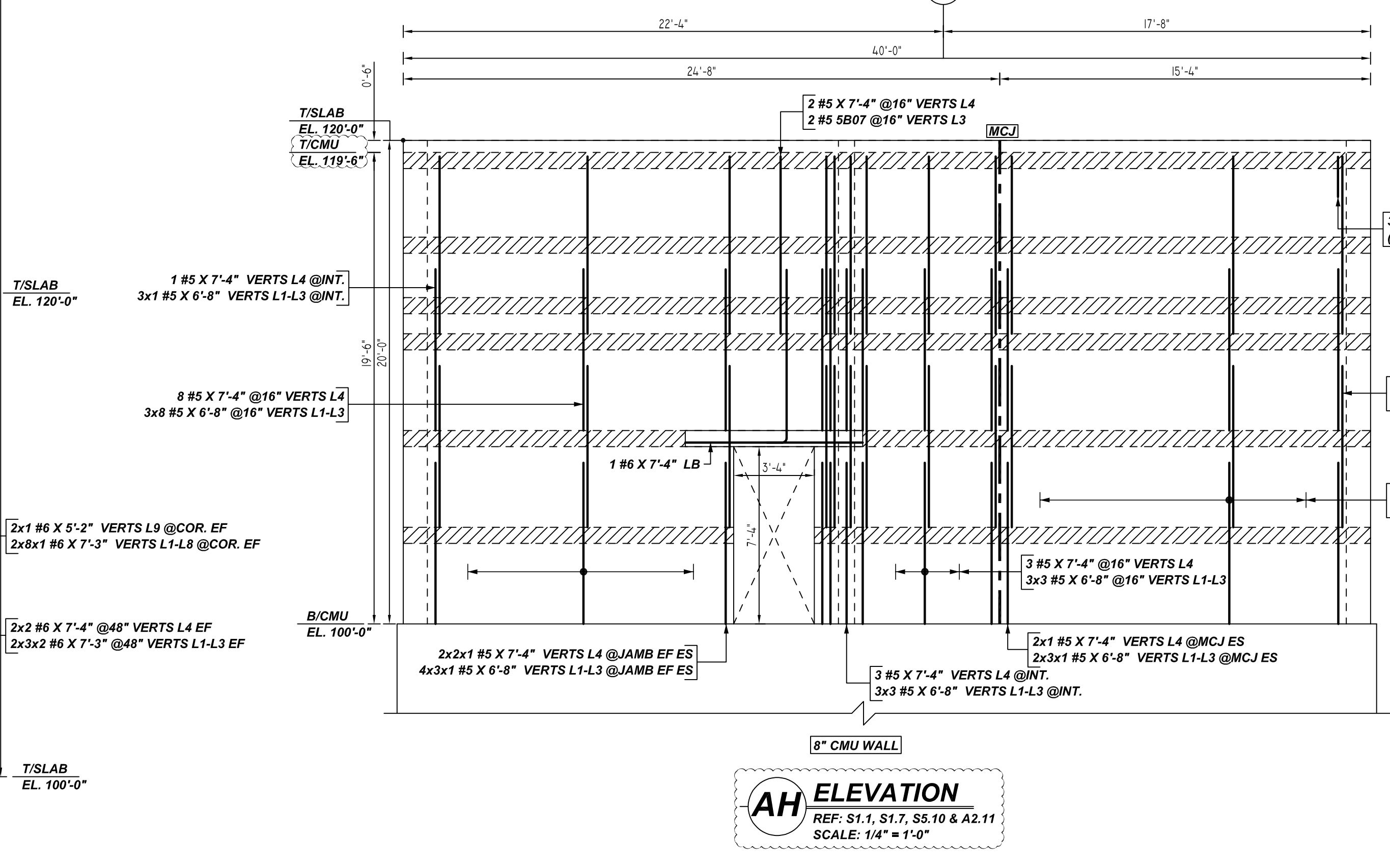
MAINTENANCE ROOM CMU WALL LAYOUT

DETAIL - F
 REF: S1.1, S1.7 & A2.11
 SCALE: 1/8" = 1'-0"

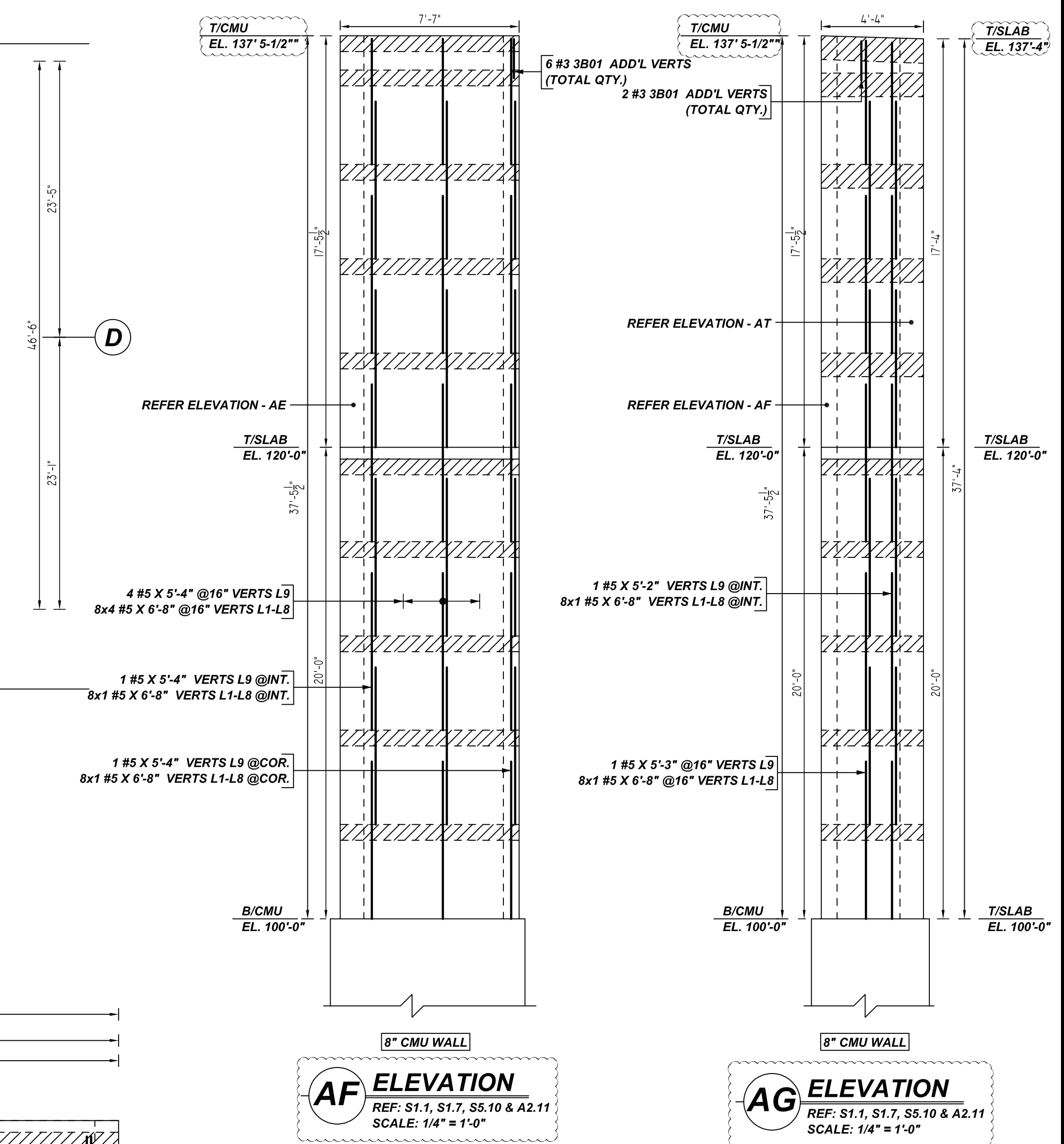


AE ELEVATION
 REF: S1.1, S1.7, S5.10 & A2.11
 SCALE: 1/4" = 1'-0"

A/E PLEASE VERIFY BAR ARRANGEMENT (TYP.)



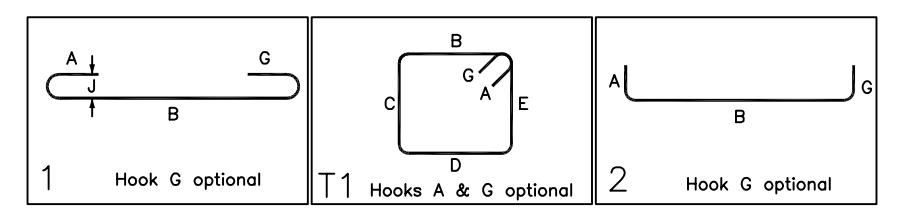
AH ELEVATION
 REF: S1.1, S1.7, S5.10 & A2.11
 SCALE: 1/4" = 1'-0"



AF ELEVATION
 REF: S1.1, S1.7, S5.10 & A2.11
 SCALE: 1/4" = 1'-0"

AG ELEVATION
 REF: S1.1, S1.7, S5.10 & A2.11
 SCALE: 1/4" = 1'-0"

Bar Mark	Qty	Size	Total Length	Type	X	Y	Z	Y'	Z'	Y''	Z''	Y'''	Z'''
3B01	74	#3	2'-1"	1	0'-5"	1'-8"							
4B05	28	#4	1'-4"	1	0'-5"	0'-8"	4'-4"	0'-8"	4'-4"	0'-8"			
5B07	3	#5	6'-2"	1	0'-10"	7'-2"							
6B33	6	#6	6'-2"	2	1'-0"	5'-2"							



LEGEND

- NO. OF LOCATION
- NO. OF LIFT
- NO. OF BARS
- NO. OF LIFT (OR) NO. OF LOCATION
- NO. OF BARS
- LIFT 1 TO LIFT 6

LAP SCHEDULE

BAR#	LENGTHS
#3	20"
#4	26"
#5	32"
#6	39"
#7	45"
#8	52"

**ALL BARS IN THIS DRAWING
 ASTM A615 GRADE 60
 BLACK UNCOATED**

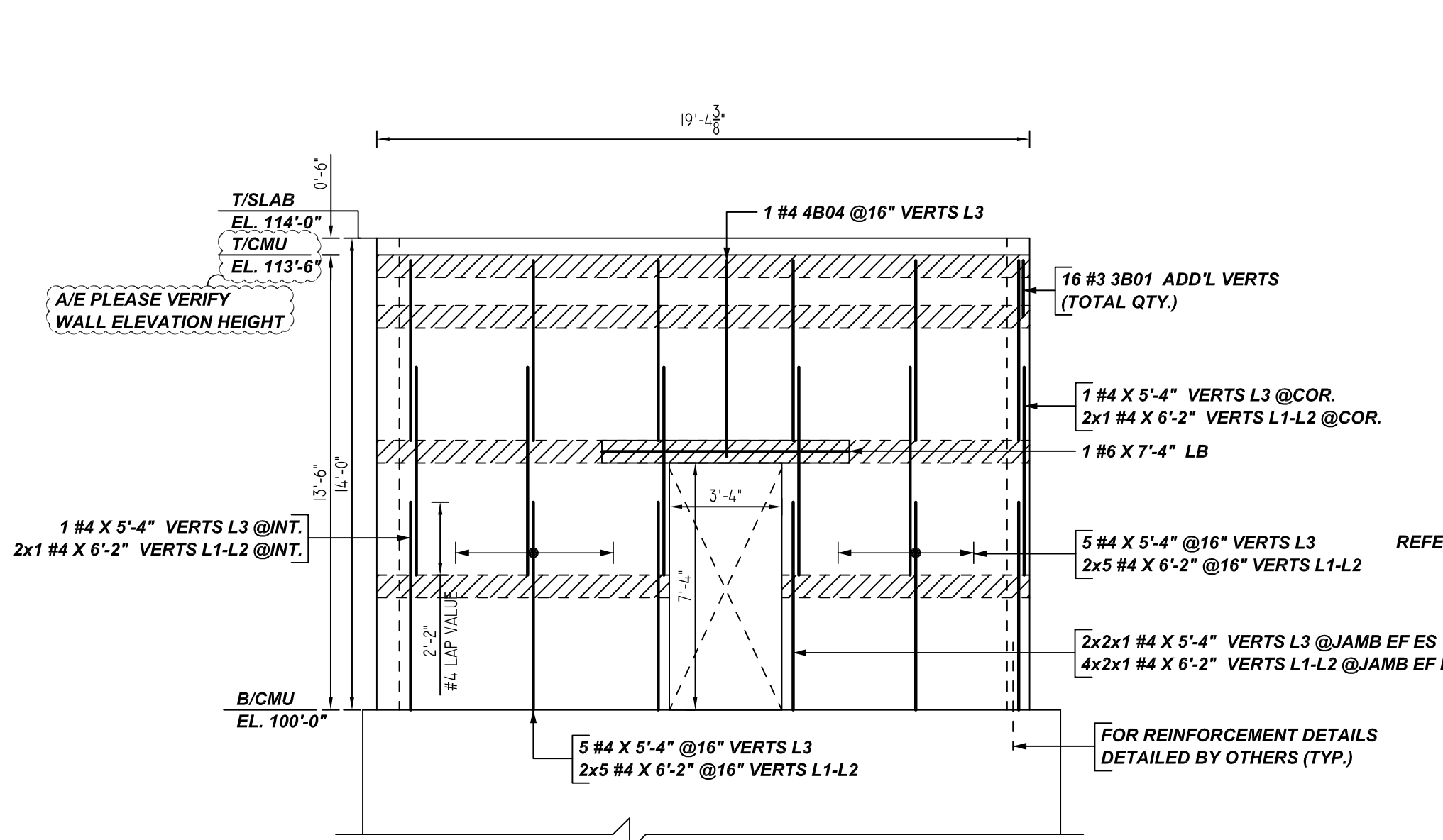
TYPICAL REINFORCING BAR CLEARANCE TABLE

LOCATION	MIN. COVER
WALL TOP & SIDE	2" CLR

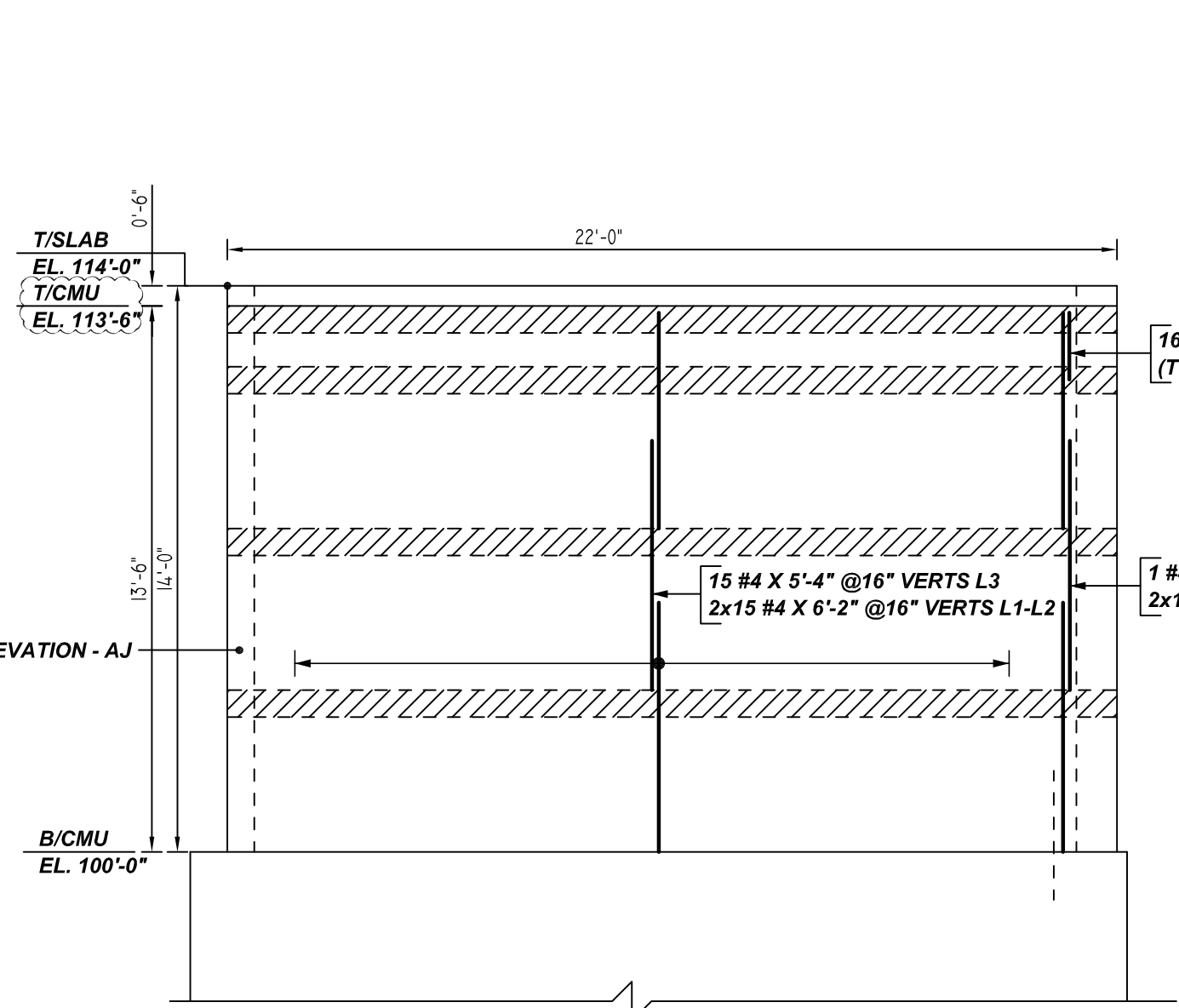
- PLACING PLAN NOTES**
- THIS DRAWINGS FOR REBAR PLACEMENT ASSISTANCE ONLY, REFER TO STRUCTURAL DETAILS FOR CONTRACT REQUIREMENTS
 - SECTIONS/DETAILS/DIMENSIONS ON PLACING PLAN ARE FOR REFERENCE AND ARE TO BE USED IN CONJUNCTION WITH CONTRACT DRAWING FOR CRSI MANUAL OF STANDARD PRACTICE
 - REINFORCING STEEL IS DETAILED PER CONTRACT DOCUMENTS ONLY AS SHOWN CODE COMPLIANCE REQUIREMENTS ARE THE RESPONSIBILITY OF ENGINEER AND/OR CONTRACTOR.
 - THE CONTRACTOR UNDERSTANDS THAT THE ENGINEER SHOULD ALWAYS VERIFY SHOP DRAWINGS IF TIME DOES NOT ALLOW FOR APPROVALS, TEXAS REBAR IS NOT HELD RESPONSIBLE FOR UNAPPROVED SHOP DRAWINGS USED IN PLACING CRSI MANUAL OF STANDARD PRACTICE THE CUSTOMER AND ENGINEER SHOULD REVIEW SHOP DRAWINGS PRIOR TO INSTALLATION TO VERIFY ACCURACY TO STRUCTURAL DRAWINGS.
- PLACING PLAN NOTES**
- DIMENSIONS ELEVATIONS & DRAWINGS SCALES SHOWN ARE FOR REFERENCE ONLY CONTRACTOR TO PROVIDE LINES, GRADES & TEMPLATES REQUIRED FOR PLACEMENTS
 - SECTIONS & DETAILS MAY NOT BE SHOWN ON ALL PLACING PLANS. KEEP STRUCTURAL DRAWINGS ON SITE FOR USE
 - SOME LAP LENGTHS WILL BE ROUNDED UP IN DETAILING TO PROVIDE FOR 1" INCREMENTS FOR LAPS.
 - LAP ON EMBEDMENT LENGTHS SHOWN IN SPECIFIC DETAILS WILL SUPPRESS LAPS IN THE LAP SCHEDULE.
 - VERIFY PLACEMENT DRAWINGS TO LATEST ISSUE OF JOB RECORD DRAWING FOR POSSIBLE REVISIONS OR FIELD CHANGES.
 - TYPICAL NOTES & DETAILS ARE USED THROUGHOUT ENTIRE PROJECT & APPLY UNLESS NOTED OTHERWISE.

NO.	DESCRIPTION	DATE	BY	FOR APPROVAL	DATE	DESCRIPTION

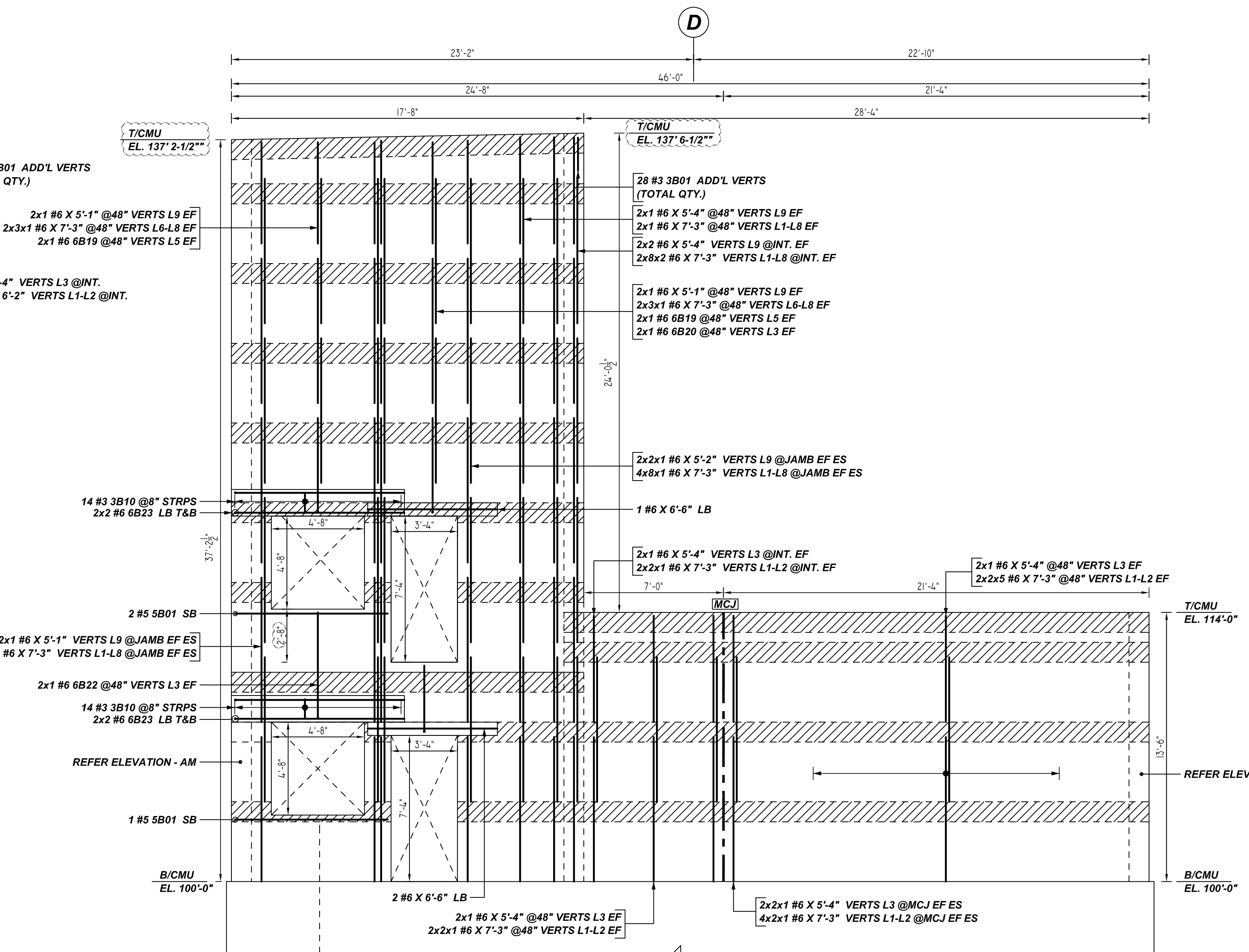
JOB NAME: GREEN BAY PACKAGING
 JOB NO: 22089
 DETAILS OF: CMU WALL REINFORCEMENT DETAILS
 DATE: 07-18-22
 DETAILER: VGS/SSSTR
 DRWG: M10
 TEXAS REBAR, LLC 817-487-1672



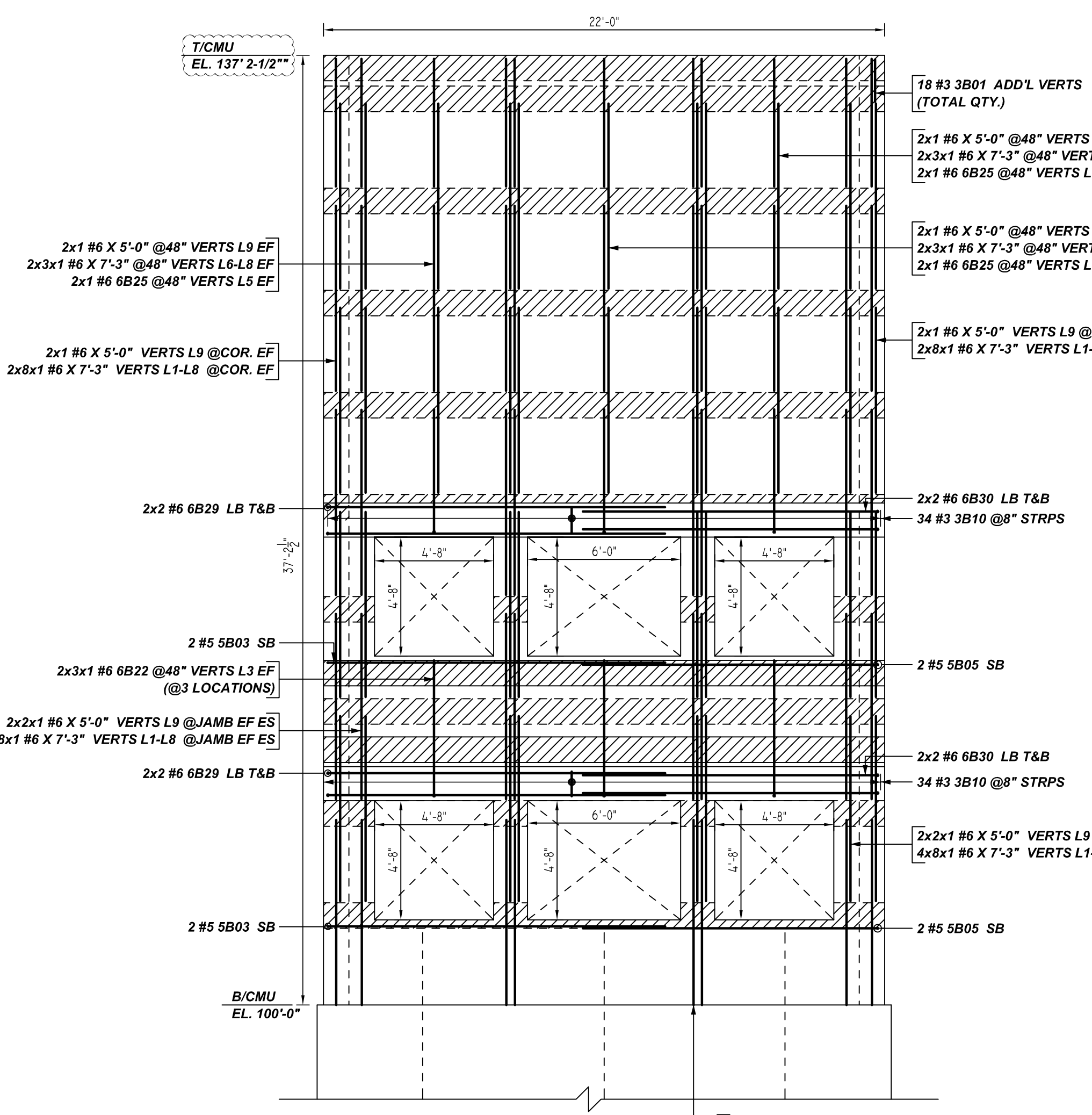
8" CMU WALL
AJ ELEVATION
 REF: S1.1, S1.7, S5.10 & A2.11
 SCALE: 1/4" = 1'-0"



8" CMU WALL
AK ELEVATION
 REF: S1.1, S1.7, S5.10 & A2.11
 SCALE: 1/4" = 1'-0"



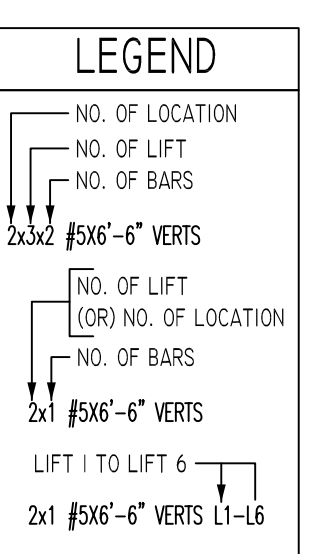
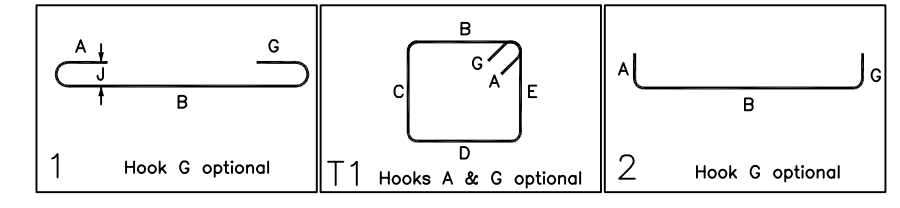
12" CMU WALL
AL ELEVATION
 REF: S1.1, S1.7, S5.10 & A2.11
 SCALE: 1/4" = 1'-0"



12" CMU WALL
AM ELEVATION
 REF: S1.1, S1.7, S5.10 & A2.11
 SCALE: 1/4" = 1'-0"

Release Number: M11

Bar Mark	Qty	Size	Total Length	Type	X	Y	Z	T	V	W	X	Y	Z	T	V	W
3B01	78	#3	2'-11"	1	0'-5"	1'-8"										
3B10	96	#3	4'-0"	11	0'-4"	0'-8"	1'-0"	0'-8"	1'-0"	0'-4"						
4B04	1	#4	6'-5"	2	0'-5"	5'-10"										
5B01	3	#5	8'-5"	2	1'-0"	7'-6"										
5B03	4	#5	14'-3"	2	1'-0"	13'-3"										
5B05	4	#5	12'-7"	2	1'-0"	11'-7"										
6B19	4	#6	5'-3"	2	0'-4"	4'-9"										
6B20	2	#6	4'-4"	2	1'-0"	3'-4"										
6B22	8	#6	5'-10"	2	0'-6"	5'-4"										
6B23	8	#6	3'-6"	2	1'-0"	8'-6"										
6B25	6	#6	5'-4"	2	0'-6"	4'-10"										
6B29	8	#6	14'-3"	2	1'-0"	13'-3"										
6B30	8	#6	12'-7"	2	1'-0"	11'-7"										



LAP SCHEDULE

BAR#	LENGTHS
#3	20"
#4	26"
#5	32"
#6	39"
#7	45"
#8	52"

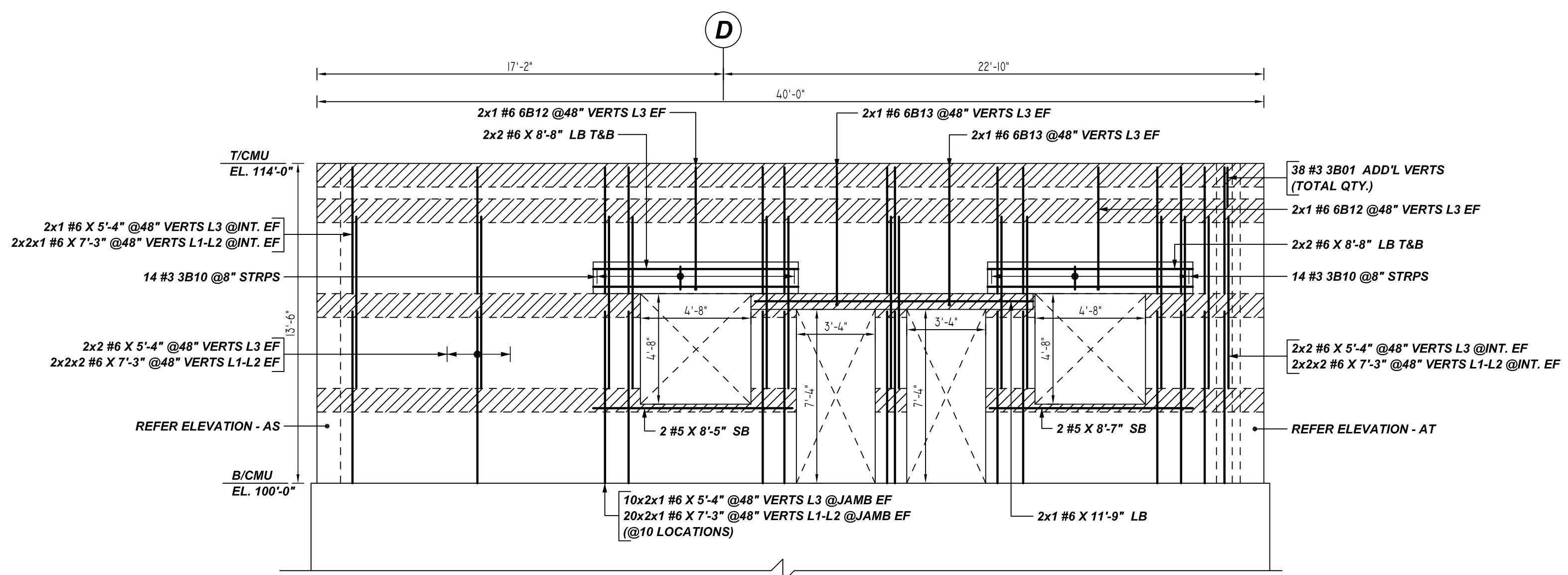
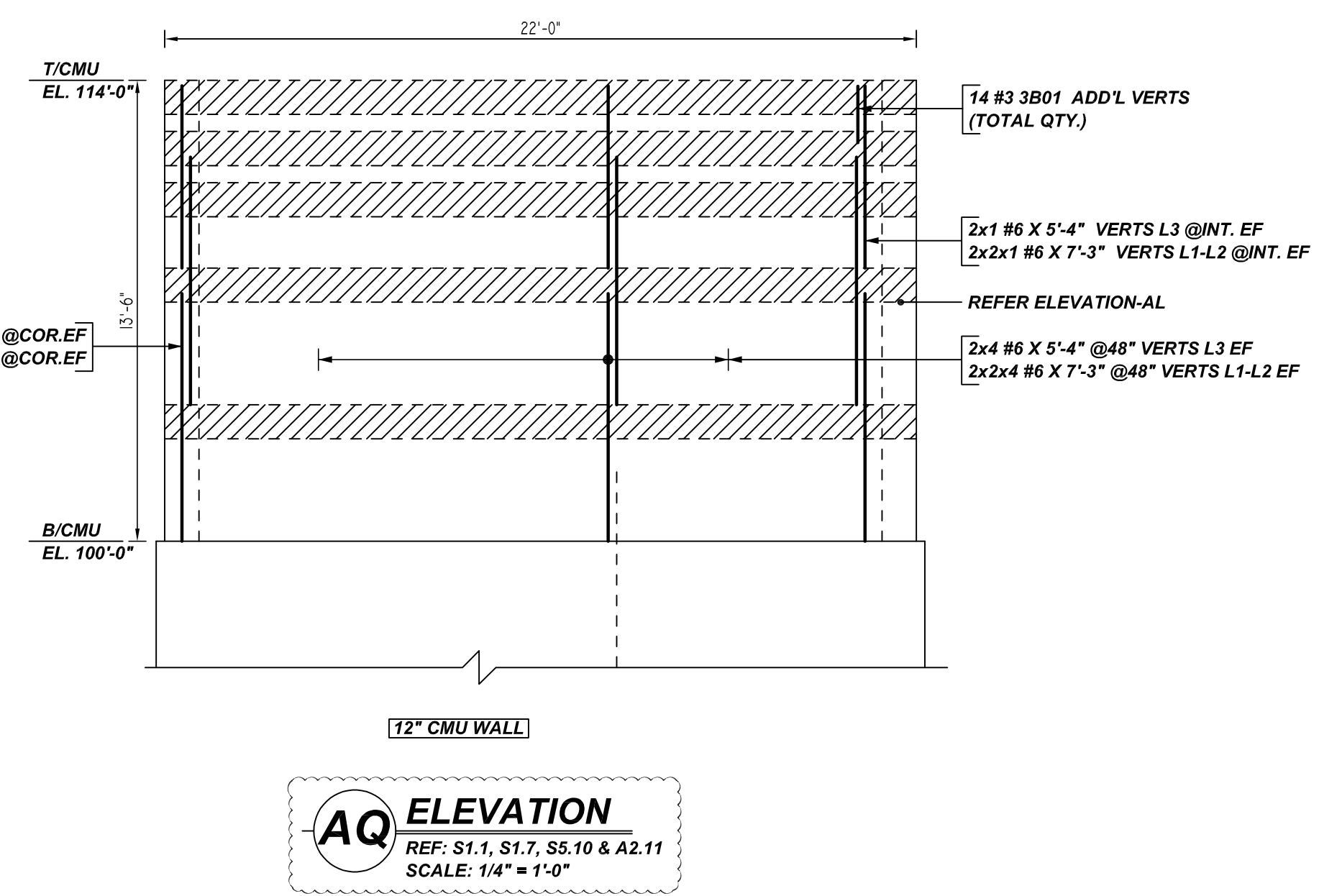
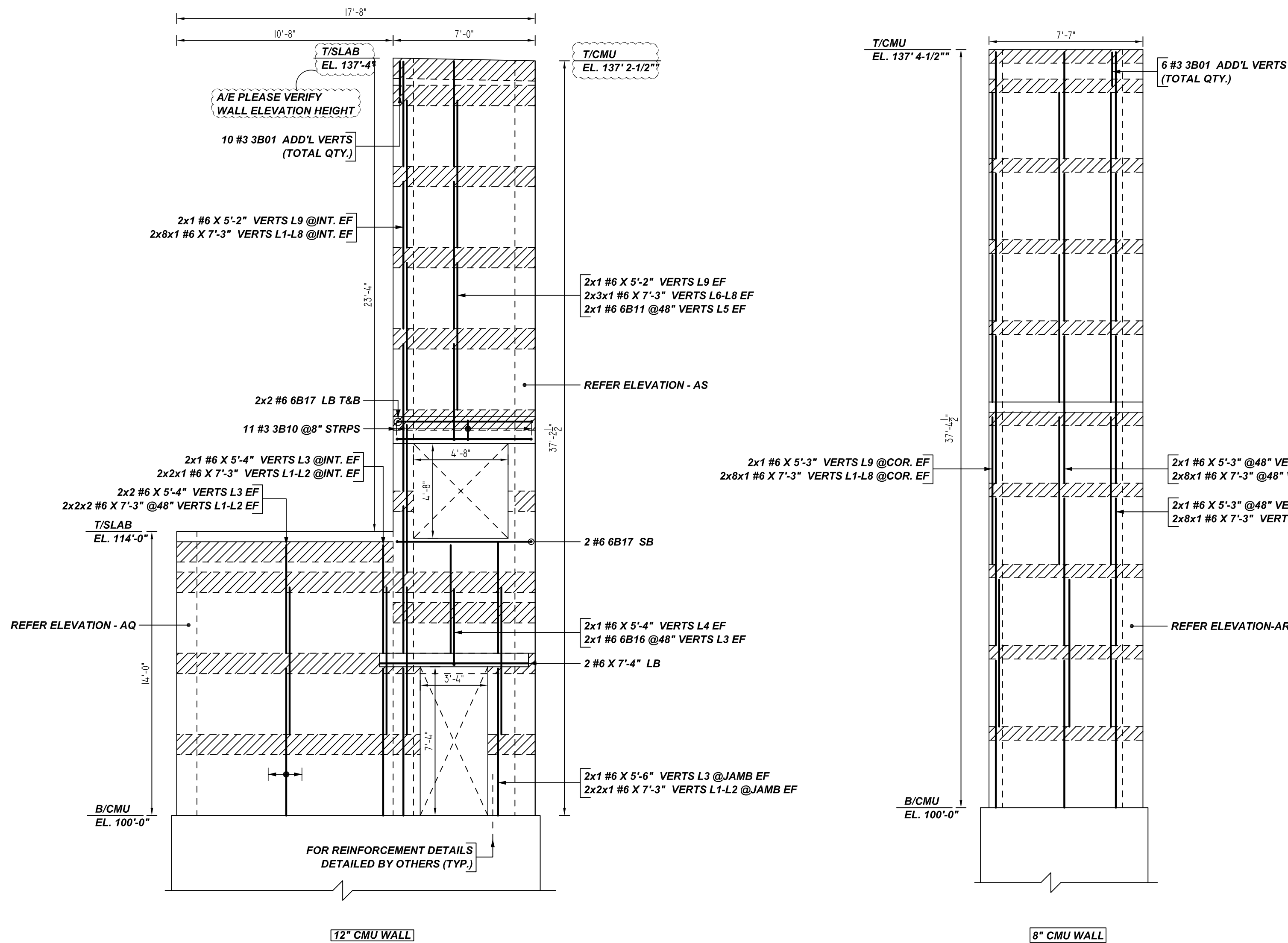
**ALL BARS IN THIS DRAWING
 ASTM A615 GRADE 60
 BLACK UNCOATED**

LOCATION	MIN. COVER
WALL TOP & SIDE	2" CLR

- PLACING PLAN NOTES**
- THIS DRAWINGS FOR REBAR PLACEMENT ASSISTANCE ONLY, REFER TO STRUCTURAL DETAILS FOR CONTRACT REQUIREMENTS
 - SECTIONS/DETAILS/DIMENSIONS ON PLACING PLAN ARE FOR REFERENCE AND ARE TO BE USED IN CONJUNCTION WITH CONTRACT DRAWING FOR CRSI MANUAL OF STANDARD PRACTICE
 - REINFORCING STEEL IS DETAILED PER CONTRACT DOCUMENTS ONLY AS SHOWN CODE COMPLIANCE REQUIREMENTS ARE THE RESPONSIBILITY OF ENGINEER AND/OR CONTRACTOR
 - THE CONTRACTOR UNDERSTANDS THAT THE ENGINEER SHOULD ALWAYS VERIFY SHOP DRAWINGS IF TIME DOES NOT ALLOW FOR APPROVALS, TEXAS REBAR IS NOT HELD RESPONSIBLE FOR UNAPPROVED SHOP DRAWINGS USED IN PLACING CRSI MANUAL OF STANDARD PRACTICE THE CUSTOMER AND ENGINEER SHOULD REVIEW SHOP DRAWINGS PRIOR TO INSTALLATION TO VERIFY ACCURACY TO STRUCTURAL DRAWINGS.
- PLACING PLAN NOTES**
- DIMENSIONS ELEVATIONS & DRAWINGS SCALES SHOWN ARE FOR REFERENCE ONLY CONTRACTOR TO PROVIDE LINES, GRADES & TEMPLATES REQUIRED FOR PLACEMENTS
 - SECTIONS & DETAILS MAY NOT BE SHOWN ON ALL PLACING PLANS. KEEP STRUCTURAL DRAWINGS ON SITE FOR USE
 - SOME LAP LENGTHS WILL BE ROUNDED UP IN DETAILING TO PROVIDE FOR 1" INCREMENTS FOR LAPS
 - LAP OR EMBEDMENT LENGTHS SHOWN IN SPECIFIC DETAILS WILL SUPPRESS LAPS IN THE LAP SCHEDULE
 - VERIFY PLACEMENT DRAWINGS TO LATEST ISSUE OF JOB RECORD DRAWING FOR POSSIBLE REVISIONS OR FIELD CHANGES
 - TYPICAL NOTES & DETAILS ARE USED THROUGHOUT ENTIRE PROJECT & APPLY UNLESS NOTED OTHERWISE

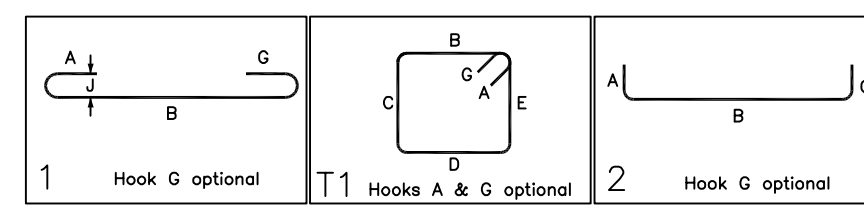
NO.	DATE	DESCRIPTION

JOB NAME: GREEN BAY PACKAGING
 JOB NO: 22089
 DETAILS OF: CMU WALL REINFORCEMENT DETAILS
 DATE: 07-18-22
 DETAILER: VGS/SSSTR
 DRWG: M11
 TEXAS REBAR, LLC 817-487-1672



Release Number: W12

Bar No.	Qty	Size	Total Length	Splice	X	Y	Z	W	V	U	T	S	R	Q	P	O	N	M	L	K	J	I	H	G	F	E	D	C	B	A
3801	68	#3	2'-11"	1	0'-5"	1'-8"																								
3810	39	#3	4'-0"	11	0'-4"	0'-8"	1'-0"	0'-8"	1'-0"	0'-4"	0'-3"																			
6811	2	#6	5'-9"	2	1'-0"	4'-9"																								
6812	4	#6	5'-8"	2	0'-6"	5'-2"																								
6813	4	#6	6'-4"	2	0'-6"	5'-10"																								
6816	2	#6	4'-3"	2	0'-6"	3'-9"																								
6817	6	#6	8'-8"	2	1'-0"	8'-8"																								



- PLACING PLAN NOTES**
- THIS DRAWINGS FOR REBAR PLACEMENT ASSISTANCE ONLY, REFER TO STRUCTURAL DETAILS FOR CONTRACT REQUIREMENTS
 - SECTIONS/DETAILS/DIMENSIONS ON PLACING PLAN ARE FOR REFERENCE AND ARE TO BE USED IN CONJUNCTION WITH CONTRACT DRAWINGS FOR CRSI MANUAL OF STANDARD PRACTICE
 - REINFORCING STEEL IS DETAILED PER CONTRACT DOCUMENTS ONLY AS SHOWN CODE COMPLIANCE REQUIREMENTS ARE THE RESPONSIBILITY OF ENGINEER AND/OR CONTRACTOR
 - THE CONTRACTOR UNDERSTANDS THAT THE ENGINEER SHOULD ALWAYS VERIFY SHOP DRAWINGS IF TIME DOES NOT ALLOW FOR APPROVALS, TEXAS REBAR IS NOT HELD RESPONSIBLE FOR UNAPPROVED SHOP DRAWINGS USED IN PLACING CRSI MANUAL OF STANDARD PRACTICE THE CUSTOMER AND ENGINEER SHOULD REVIEW SHOP DRAWINGS PRIOR TO INSTALLATION TO VERIFY ACCURACY TO STRUCTURAL DRAWINGS.
- PLACING PLAN NOTES**
- DIMENSIONS ELEVATIONS & DRAWINGS SCALES SHOWN ARE FOR REFERENCE ONLY CONTRACTOR TO PROVIDE LINES, GRADES & TEMPLATES REQUIRED FOR PLACEMENTS
 - SECTIONS & DETAILS MAY NOT BE SHOWN ON ALL PLACING PLANS. KEEP STRUCTURAL DRAWINGS ON SITE FOR USE
 - SOME LAP LENGTHS WILL BE ROUNDED UP IN DETAILING TO PROVIDE FOR 1" INCREMENTS FOR LAPS
 - LAP OR EMBEDMENT LENGTHS SHOWN IN SPECIFIC DETAILS WILL SUPPRESS LAPS IN THE LAP SCHEDULE
 - VERIFY PLACEMENT DRAWINGS TO LATEST ISSUE OF JOB RECORD DRAWING FOR POSSIBLE REVISIONS OR FIELD CHANGES
 - TYPICAL NOTES & DETAILS ARE USED THROUGHOUT ENTIRE PROJECT & APPLY UNLESS NOTED OTHERWISE

LEGEND

NO. OF LOCATION
NO. OF LIFT
NO. OF BARS

2x32 #5x6'-6" VERTS

NO. OF LIFT (OR) NO. OF LOCATION
NO. OF BARS

2x1 #5x6'-6" VERTS

LIFT 1 TO LIFT 6

2x1 #5x6'-6" VERTS L1-L6

LAP SCHEDULE

BAR#	LENGTHS
#3	20"
#4	26"
#5	32"
#6	39"
#7	45"
#8	52"

**ALL BARS IN THIS DRAWING
ASTM A615 GRADE 60
BLACK UNCOATED**

TYPICAL REINFORCING BAR CLEARANCE TABLE

LOCATION	MIN. COVER
WALL TOP & SIDE	2" CLR

NO.	DATE	DESCRIPTION

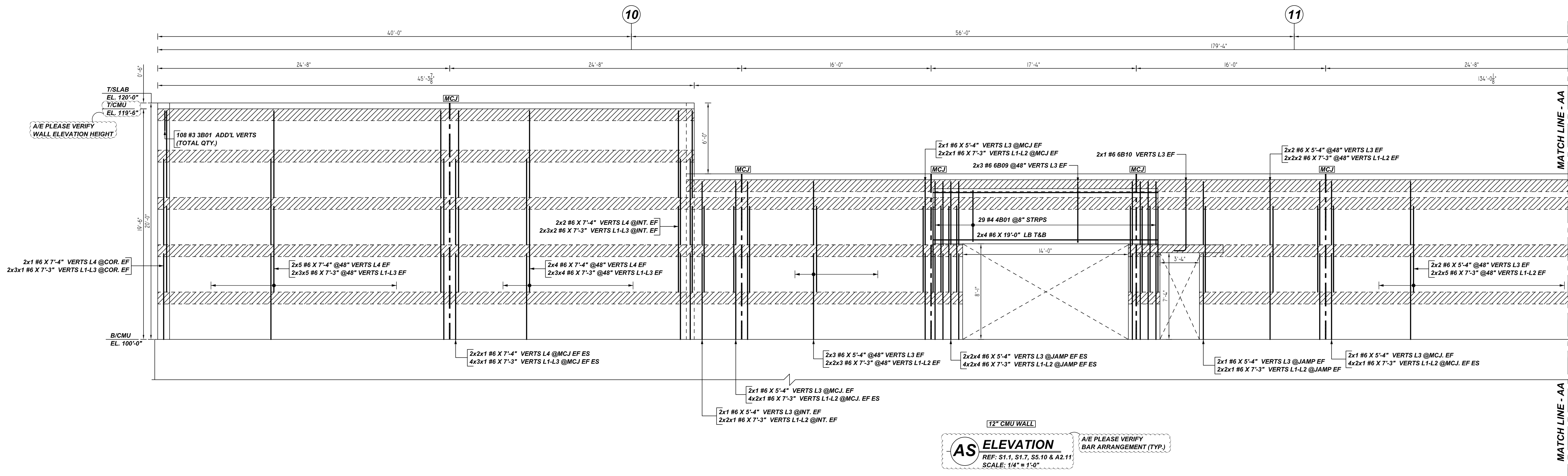
JOB NAME: GREEN BAY PACKAGING

JOB NO: 22089

DETAILS OF: CMU WALL REINFORCEMENT DETAILS DATE: 07-18-22

DETAILER: VGS/SSSTR DRWG: M12

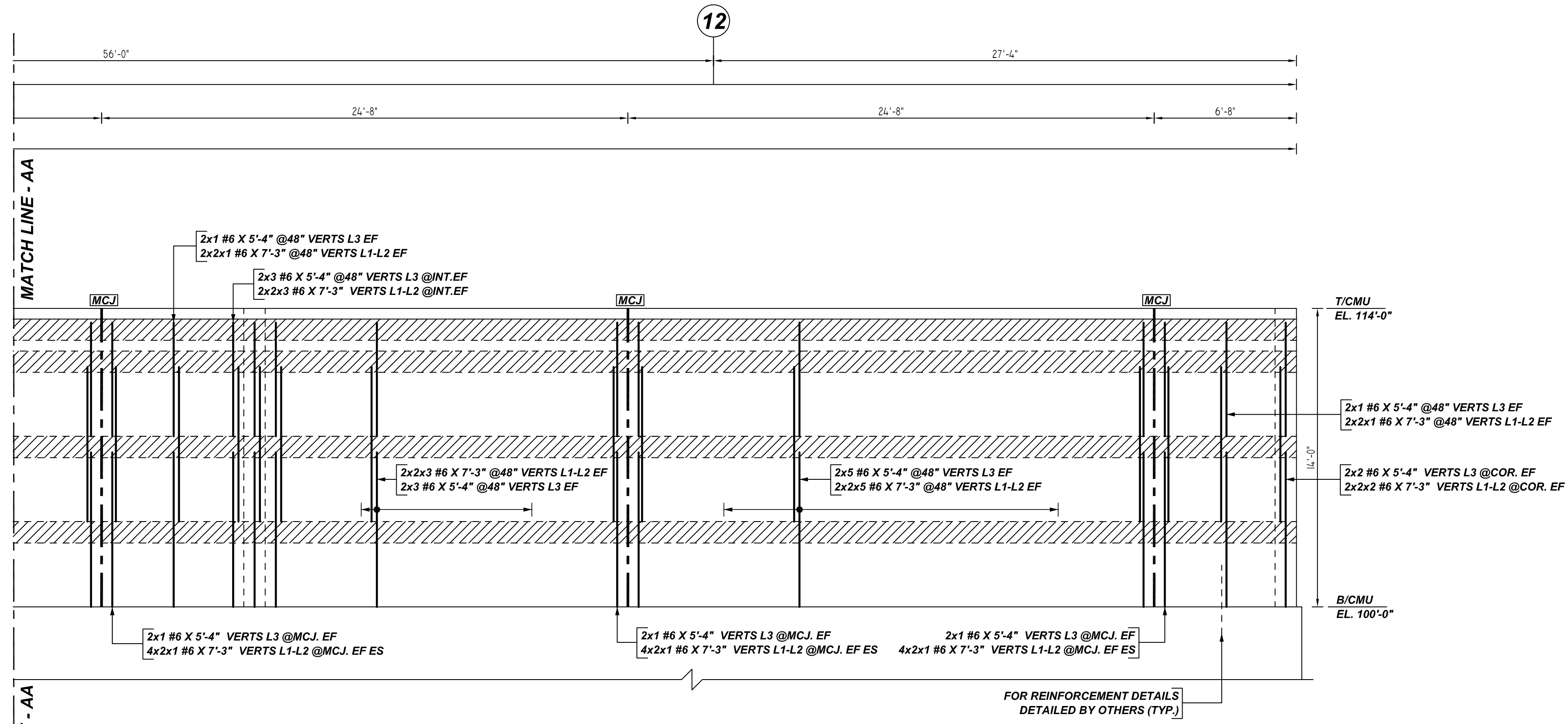
TEXAS REBAR, LLC 817-487-1672



AS ELEVATION
 REF: S1.1, S1.7, S5.10 & A2.11
 SCALE: 1/4" = 1'-0"

12" CMU WALL

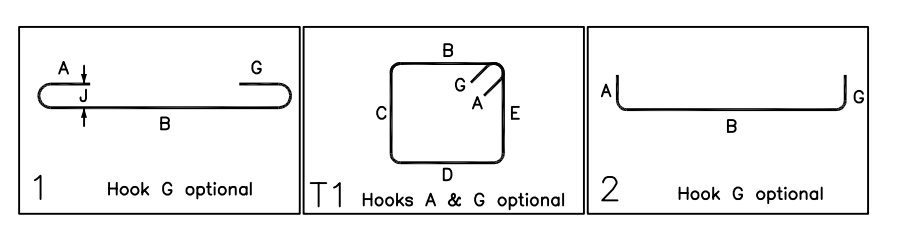
A/E PLEASE VERIFY BAR ARRANGEMENT (TYP.)



AS ELEVATION
 REF: S1.1, S1.7, S5.10 & A2.11
 SCALE: 1/4" = 1'-0"

12" CMU WALL

Bar Mark	Qty	Size	Total Length	Type	X'	Y'	Z'	W'	V'	U'	T'	S'	R'	Q'	P'	O'	N'	M'	L'	K'	J'	I'	H'	G'	F'	E'	D'	C'	B'	A'	
3801	100	#3	2'-11 1/2"	1	0'-5"	1'-8"																									
4801	28	#4	10'-4 1/2"	11	0'-4 1/2"	0'-8"	4'-4"	0'-8"	4'-4"																						
6801	8	#6	6'-11 1/2"	2	1'-0"	5'-1"																									
6810	2	#6	6'-10 1/2"	2	1'-0"	5'-10"																									



LEGEND

- NO. OF LOCATION
- NO. OF LIFT
- NO. OF BARS
- NO. OF LIFT (OR) NO. OF LOCATION
- NO. OF BARS
- NO. OF LIFT (OR) NO. OF LOCATION
- LIFT 1 TO LIFT 6
- NO. OF BARS

LAP SCHEDULE

BAR#	LENGTHS
#3	20"
#4	26"
#5	32"
#6	39"
#7	45"
#8	52"

**ALL BARS IN THIS DRAWING
 ASTM A615 GRADE 60
 BLACK UNCOATED**

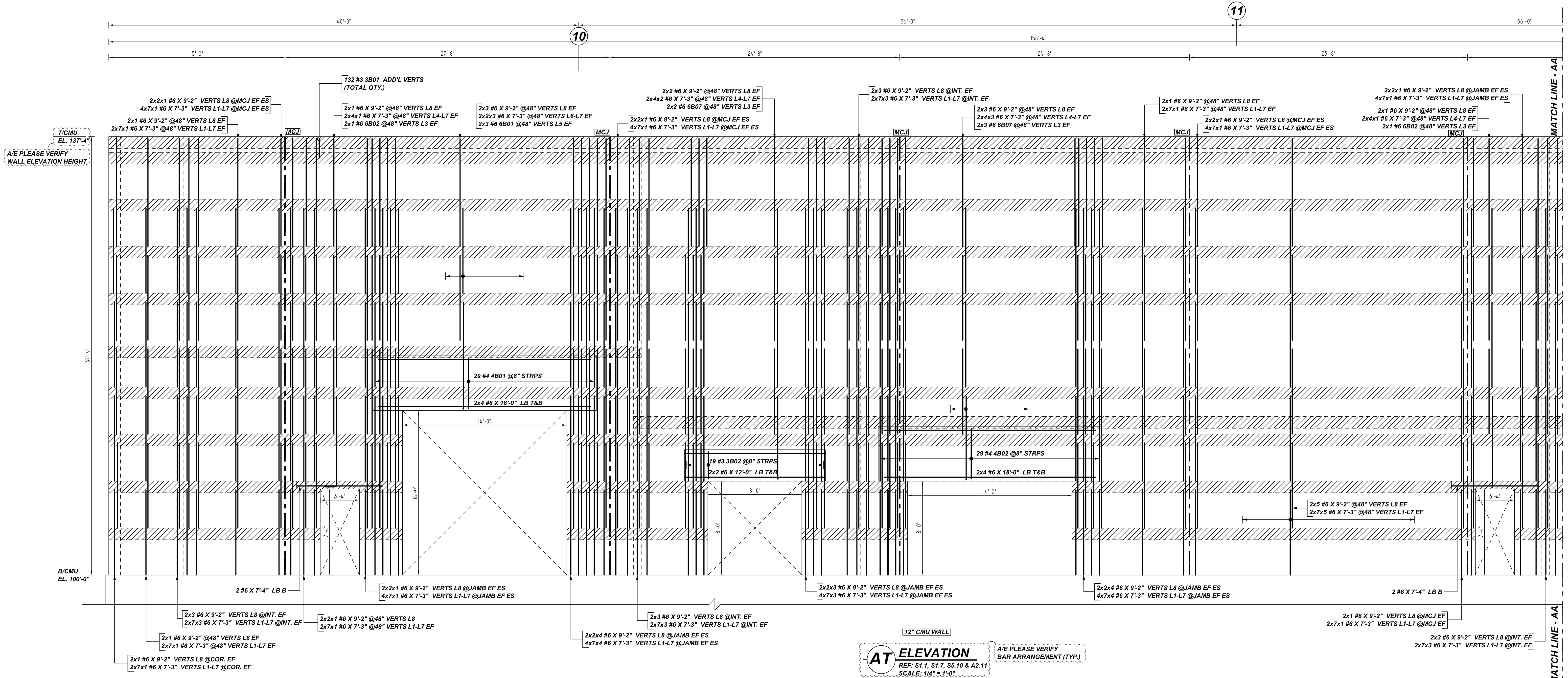
TYPICAL REINFORCING BAR CLEARANCE TABLE

LOCATION	MIN. COVER
WALL TOP & SIDE	2" CLR

- PLACING PLAN NOTES**
- THIS DRAWING FOR REBAR PLACEMENT ASSISTANCE ONLY, REFER TO STRUCTURAL DETAILS FOR CONTRACT REQUIREMENTS
 - SECTIONS/DETAILS/DIMENSIONS ON PLACING PLAN ARE FOR REFERENCE AND ARE TO BE USED IN CONJUNCTION WITH CONTRACT DRAWING FOR CRSI MANUAL OF STANDARD PRACTICE
 - REINFORCING STEEL IS DETAILED PER CONTRACT DOCUMENTS ONLY AS SHOWN CODE COMPLIANCE REQUIREMENTS ARE THE RESPONSIBILITY OF ENGINEER AND/OR CONTRACTOR
 - THE CONTRACTOR UNDERSTANDS THAT THE ENGINEER SHOULD ALWAYS VERIFY SHOP DRAWINGS IF TIME DOES NOT ALLOW FOR APPROVALS, TEXAS REBAR IS NOT HELD RESPONSIBLE FOR UNAPPROVED SHOP DRAWINGS USED IN PLACING CRSI MANUAL OF STANDARD PRACTICE THE CUSTOMER AND ENGINEER SHOULD REVIEW SHOP DRAWINGS PRIOR TO INSTALLATION TO VERIFY ACCURACY TO STRUCTURAL DRAWINGS.
- PLACING PLAN NOTES**
- DIMENSIONS ELEVATIONS & DRAWINGS SCALES SHOWN ARE FOR REFERENCE ONLY CONTRACTOR TO PROVIDE LINES, GRADES & TEMPLATES REQUIRED FOR PLACEMENTS
 - SECTIONS & DETAILS MAY NOT BE SHOWN ON ALL PLACING PLANS. KEEP STRUCTURAL DRAWINGS ON SITE FOR USE
 - SOME LAP LENGTHS WILL BE ROUNDED UP IN DETAILING TO PROVIDE FOR 1" INCREMENTS FOR LAPS
 - LAP OR EMBEDMENT LENGTHS SHOWN IN SPECIFIC DETAILS WILL SUPPRESS LAPS IN THE LAP SCHEDULE
 - VERIFY PLACEMENT DRAWINGS TO LATEST ISSUE OF JOB RECORD DRAWING FOR POSSIBLE REVISIONS OR FIELD CHANGES
 - TYPICAL NOTES & DETAILS ARE USED THROUGHOUT ENTIRE PROJECT & APPLY UNLESS NOTED OTHERWISE

NO.	DATE	DESCRIPTION	BY	CHECKED	DATE	JOB NO.	JOB NAME	DATE	DRAWING

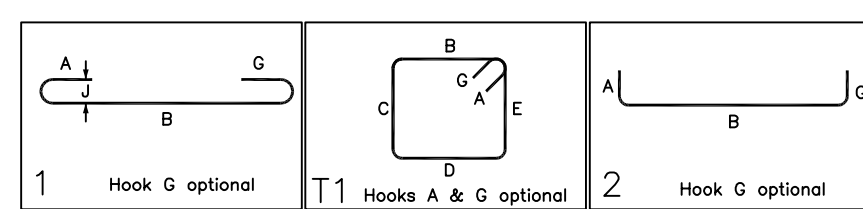
JOB NAME: GREEN BAY PACKAGING
 JOB NO: 22089
 DETAILS OF: CMU WALL REINFORCEMENT DETAILS
 DATE: 07-18-22
 DETAILER: VGS/SSSTR
 DRWG: M13
 TEXAS REBAR, LLC 817-487-1672



AT ELEVATION
 REF: S1.1, S1.7, S5.10 & A2.11
 SCALE: 1/4" = 1'-0"

A/E PLEASE VERIFY
 BAR ARRANGEMENT (TYP.)

Bar Mark	Qty	Size	Total Length	Type	X'	Y'	Z'	X'	Y'	Z'	X'	Y'	Z'	X'	Y'	Z'
3801	132	#3	2'-11"	1	0'-5"	1'-8"										
3802	19	#3	6'-8 3/4"	11	0'-4 1/4"	0'-8"	2'-4"	0'-8"	2'-4"							
4901	29	#4	10'-9 1/2"	11	0'-4 1/4"	0'-8"	4'-4"	0'-8"	4'-4"							
4902	29	#4	10'-9 1/2"	11	0'-4 1/4"	0'-8"	4'-4"	0'-8"	4'-4"							
4903	6	#6	10'-11"	2	1'-0"	9'-1"										
4904	4	#6	8'-9"	2	1'-0"	7'-9"										
4905	10	#6	8'-11"	2	1'-0"	7'-11"										



NO. OF LOCATION	NO. OF LIFT	NO. OF BARS
2x3	2	2x3
2x3	2	2x3
2x1	2	2x1
2x1	2	2x1

BAR #	LENGTHS
#3	20"
#4	26"
#5	32"
#6	39"
#7	45"
#8	52"

LOCATION	MIN. COVER
WALL TOP & SIDE	2" CLR

PLACING PLAN NOTES

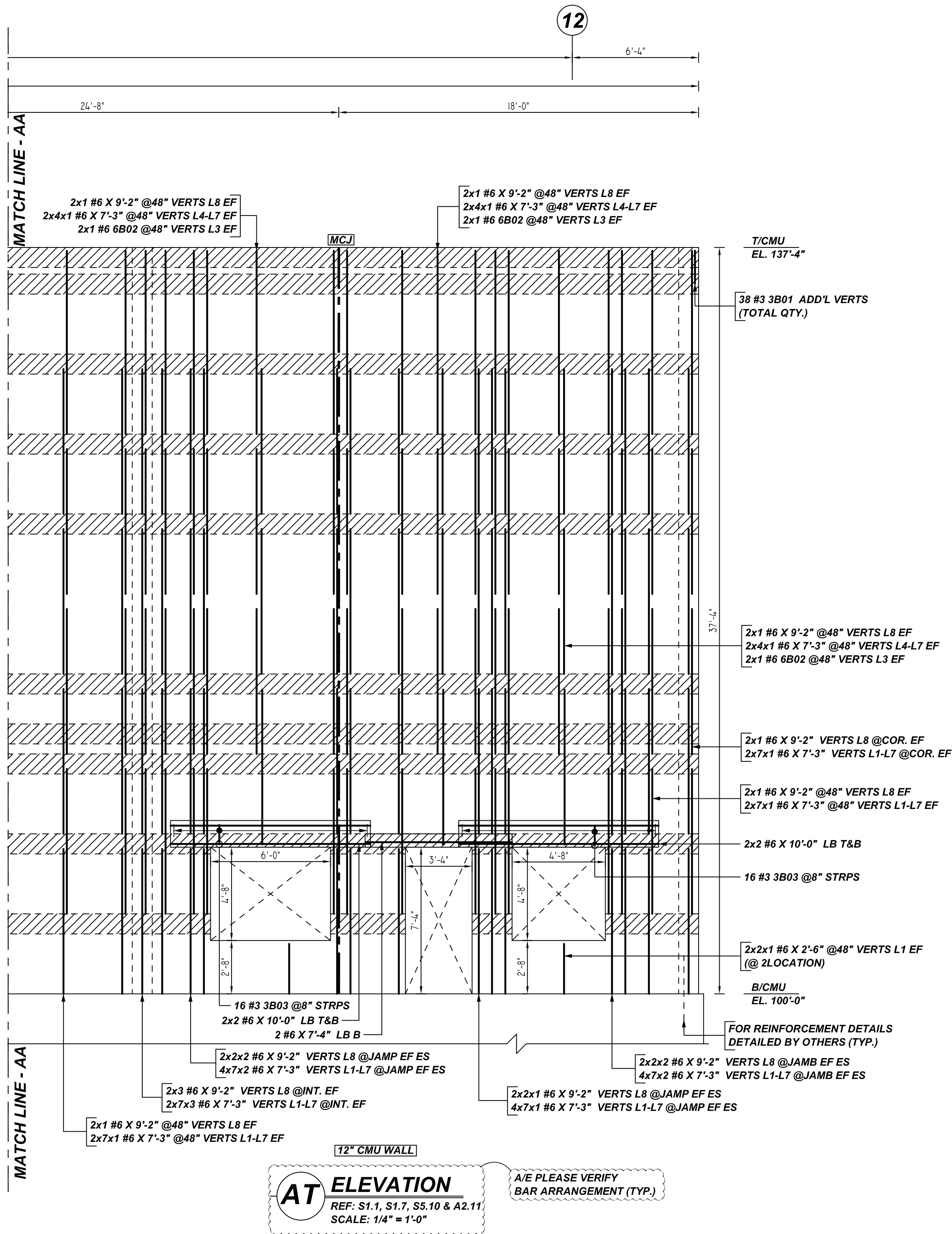
- THIS DRAWING IS FOR REBAR PLACEMENT ASSISTANCE ONLY. REFER TO STRUCTURAL DETAILS FOR CONTRACT REQUIREMENTS.
- SECTIONS & DETAILS DIMENSIONS ON PLACING PLAN ARE FOR REFERENCE ONLY AND ARE TO BE USED IN CONJUNCTION WITH CONTRACT DRAWING FOR CRSI MANUAL OF STANDARD PRACTICE.
- REINFORCING STEEL IS DETAILED PER CONTRACT DOCUMENTS ONLY AS SHOWN. CODE COMPLIANCE REQUIREMENTS ARE THE RESPONSIBILITY OF ENGINEER AND/OR CONTRACTOR.
- THE CONTRACTOR UNDERSTANDS THAT THE ENGINEER SHOULD ALWAYS VERIFY SHOP DRAWINGS IF TIME DOES NOT ALLOW FOR APPROVALS. TEXAS REBAR IS NOT HELD RESPONSIBLE FOR UNAPPROVED SHOP DRAWINGS USED IN PLACING CRSI MANUAL OF STANDARD PRACTICE. THE CUSTOMER AND ENGINEER SHOULD REVIEW SHOP DRAWINGS PRIOR TO INSTALLATION TO VERIFY ACCURACY TO STRUCTURAL DRAWINGS.

PLACING PLAN NOTES

- DIMENSIONS, ELEVATIONS & DRAWING SCALES SHOWN ARE FOR REFERENCE ONLY. CONTRACTOR TO PROVIDE LINES, GRADES & TEMPLATES REQUIRED FOR PLACEMENTS.
- SECTIONS & DETAILS MAY NOT BE SHOWN ON ALL PLACING PLANS. KEEP STRUCTURAL DRAWINGS ON SITE FOR USE.
- SOME LAP LENGTHS WILL BE ROUNDED UP IN DETAILING TO PROVIDE FOR 1" INCREMENTS FOR LAPS.
- LAP OR EMBEDMENT LENGTHS SHOWN IN SPECIFIC DETAILS WILL SUPPRESS LAPS IN THE LAP SCHEDULE.
- VERIFY PLACEMENT DRAWINGS TO LATEST ISSUE OF JOB RECORD DRAWING FOR POSSIBLE REVISIONS OR FIELD CHANGES.
- TYPICAL NOTES & DETAILS ARE USED THROUGHOUT ENTIRE PROJECT & APPLY UNLESS NOTED OTHERWISE.

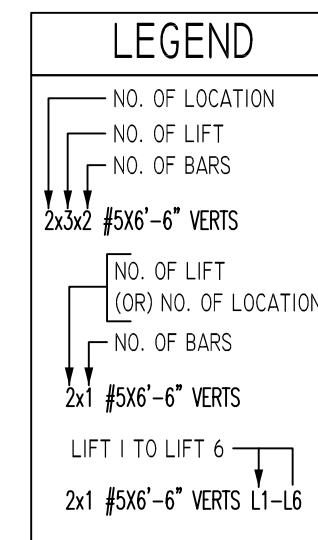
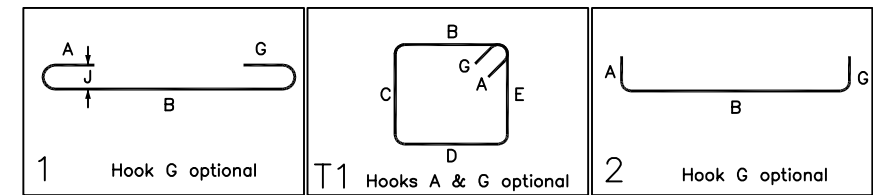
NO.	FOR APPROVAL	DATE	DESCRIPTION

JOB NAME:	GREEN BAY PACKAGING
JOB NO:	22089
DETAILS OF:	CMU WALL REINFORCEMENT DETAILS
DATE:	07-18-22
DETAILER:	VGS/SSSTR
DRWG:	M14
TEXAS REBAR, LLC 817-487-1672	



Release Number: M15

Bar Mark	Qty	Size	Total Length	Type	X'	Y'	Z'	V'	W'	X''	Y''	Z''	V''	W''
3B01	38	#3	2'-1"	1	0'-5"	1'-8"								
3B03	32	#3	4'-0"	T1	0'-4"	0'-8"	1'-0"	0'-8"	1'-0"				0'-4"	
6B02	6	#6	8'-9"	2	1'-0"	7'-9"								



LAP SCHEDULE

**ALL BARS IN THIS DRAWING
ASTM A615 GRADE 60
BLACK UNCOATED**

BAR#	LENGTHS
#3	20"
#4	26"
#5	32"
#7	45"
#8	52"

TYPICAL REINFORCING BAR CLEARANCE TABLE

LOCATION	MIN. COVER
WALL TOP & SIDE	2" CLR

PLACING PLAN NOTES

- THIS DRAWINGS FOR REBAR PLACEMENT ASSISTANCE ONLY, REFER TO STRUCTURAL DETAILS FOR CONTRACT REQUIREMENTS
- SECTIONS & DETAILS DIMENSIONS ON PLACING PLAN ARE FOR REFERENCE AND ARE TO BE USED IN CONJUNCTION WITH CONTRACT DRAWING FOR CRSI MANUAL OF STANDARD PRACTICE
- REINFORCING STEEL IS DETAILED PER CONTRACT DOCUMENTS ONLY AS SHOWN CODE COMPLIANCE REQUIREMENTS ARE THE RESPONSIBILITY OF ENGINEER AND/OR CONTRACTOR
- THE CONTRACTOR UNDERSTANDS THAT THE ENGINEER SHOULD ALWAYS VERIFY SHOP DRAWINGS IF TIME DOES NOT ALLOW FOR APPROVALS, TEXAS REBAR IS NOT HELD RESPONSIBLE FOR UNAPPROVED SHOP DRAWINGS USED IN PLACING CRSI MANUAL OF STANDARD PRACTICE THE CUSTOMER AND ENGINEER SHOULD REVIEW SHOP DRAWINGS PRIOR TO INSTALLATION TO VERIFY ACCURACY TO STRUCTURAL DRAWINGS.

PLACING PLAN NOTES

- DIMENSIONS ELEVATIONS & DRAWINGS SCALES SHOWN ARE FOR REFERENCE ONLY CONTRACTOR TO PROVIDE LINES, GRADES & TEMPLATES REQUIRED FOR PLACEMENTS
- SECTIONS & DETAILS MAY NOT BE SHOWN ON ALL PLACING PLANS. KEEP STRUCTURAL DRAWINGS ON SITE FOR USE
- SOME LAP LENGTHS WILL BE ROUNDED UP IN DETAILING TO PROVIDE FOR 1" INCREMENTS FOR LAPS
- LAP OR EMBEDMENT LENGTHS SHOWN IN SPECIFIC DETAILS WILL SUPPRESS LAPS IN THE LAP SCHEDULE
- VERIFY PLACEMENT DRAWINGS TO LATEST ISSUE OF JOB RECORD DRAWING FOR POSSIBLE REVISIONS OR FIELD CHANGES
- TYPICAL NOTES & DETAILS ARE USED THROUGHOUT ENTIRE PROJECT & APPLY UNLESS NOTED OTHERWISE

REVISION	DATE	
	MADE BY	
	FOR APPROVAL	
	NO.	
DESCRIPTION		
NO.		

JOB NAME: GREEN BAY PACKAGING

JOB NO: 22089

DETAILS OF: CMU WALL REINFORCEMENT DETAILS DATE: 07-18-22

DETAILER: VGS/SSSTR DRWG: M15

TEXAS REBAR, LLC 817-487-1672