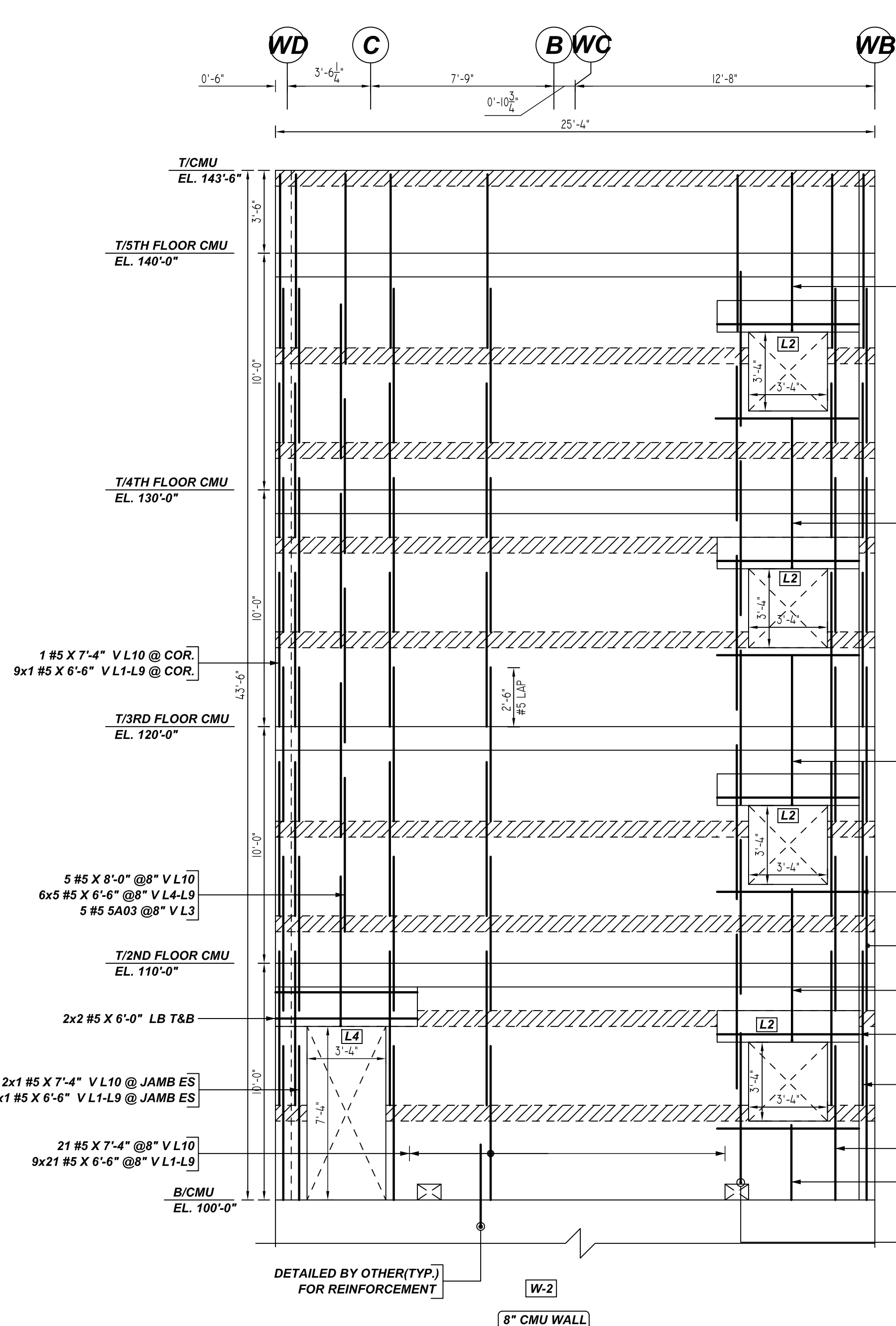
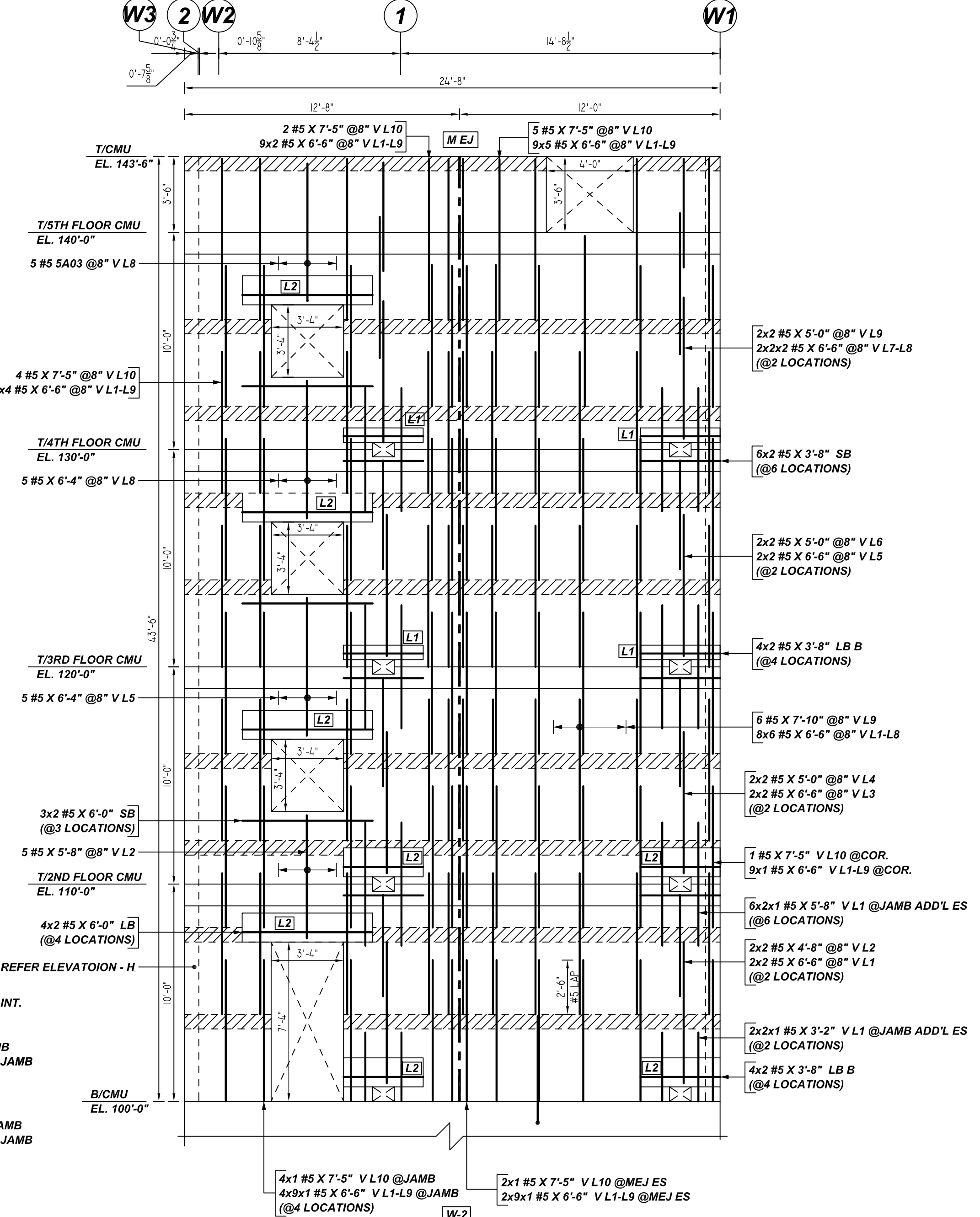


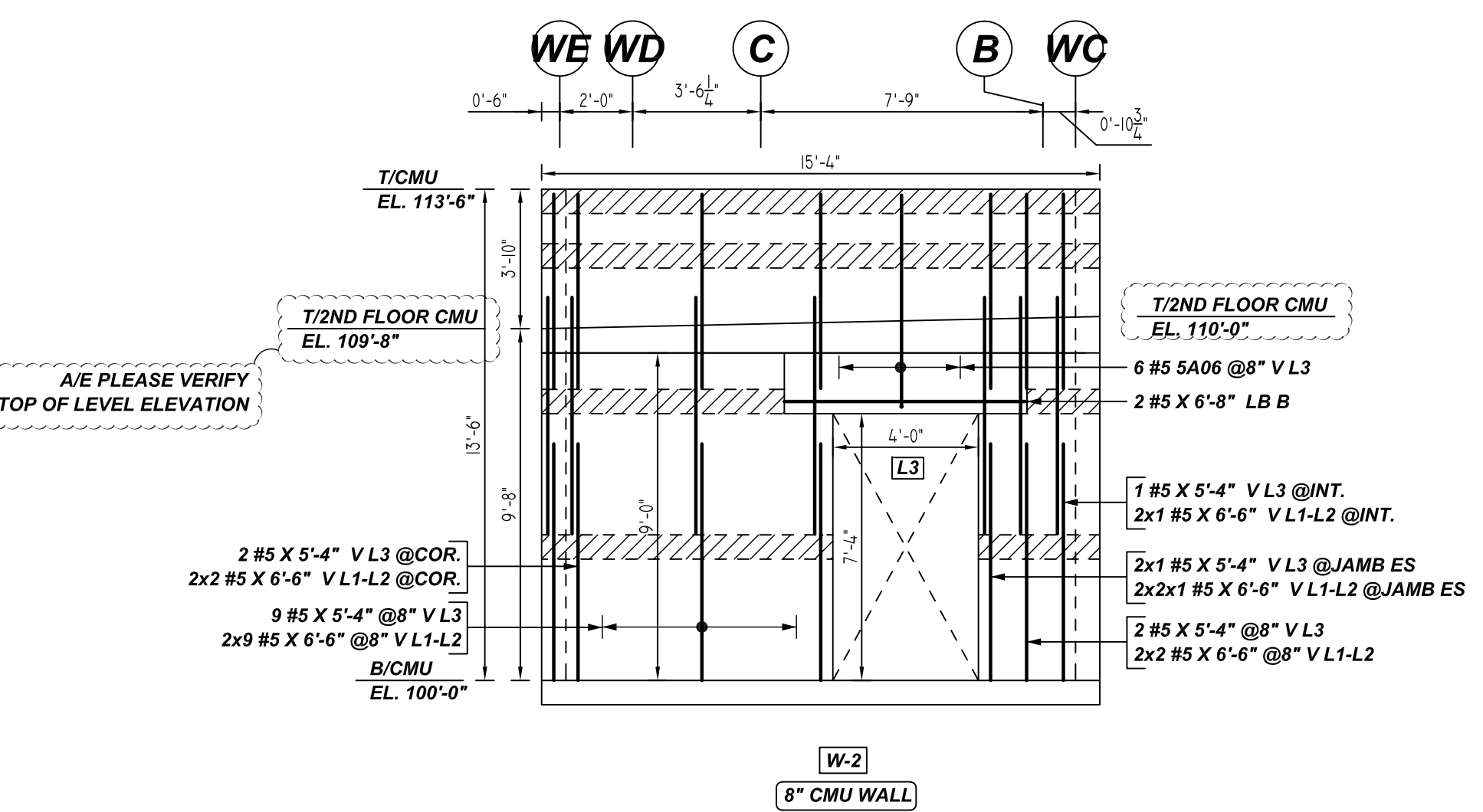
A ELEVATION
REF: A-11 & A-31
SCALE: 1/4" = 1'-0"



B ELEVATION
REF: A-11 & A-31
SCALE: 1/4" = 1'-0"



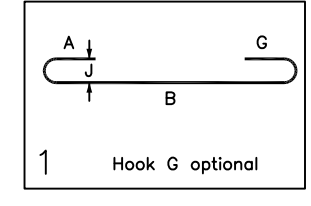
C ELEVATION
REF: A-11 & A-31
SCALE: 1/4" = 1'-0"



F ELEVATION
REF: A-11 & A-31
SCALE: 1/4" = 1'-0"

Release Number: M02

Bar Mark	Qty	Size	Total Length	Type	X	Y	Z	W	V	U	T	S	R	Q	P	O	N	M	L	K	J	I	H	G	F	E	D	C	B	A
4A02	2	#4	6'-6"	1	0'-8"	6'-0"																								
5A02	5	#5	7'-3"	1	0'-7"	6'-8"																								
5A03	2	#5	6'-11"	1	0'-7"	6'-4"																								
5A04	5	#5	7'-0"	1	0'-7"	6'-5"																								
5A06	6	#5	6'-5"	1	0'-7"	5'-10"																								



LEGEND

- NO. OF LOCATION
- NO. OF LIFT
- NO. OF BARS
- NO. OF LIFT (OR) NO. OF LOCATION
- NO. OF BARS
- LIFT 1 TO LIFT 6

LAP SCHEDULE
Per ACI :318 (12.2.2)

BAR#	48 x BAR DIA	LENGTHS
#3	1'-6"	
#4	2'-0"	
#5	2'-6"	
#6	3'-0"	
#7	3'-6"	
#8	4'-0"	
#9	4'-7"	
#10	5'-1"	
#11	5'-8"	

TYPICAL REINFORCING BAR CLEARANCE TABLE

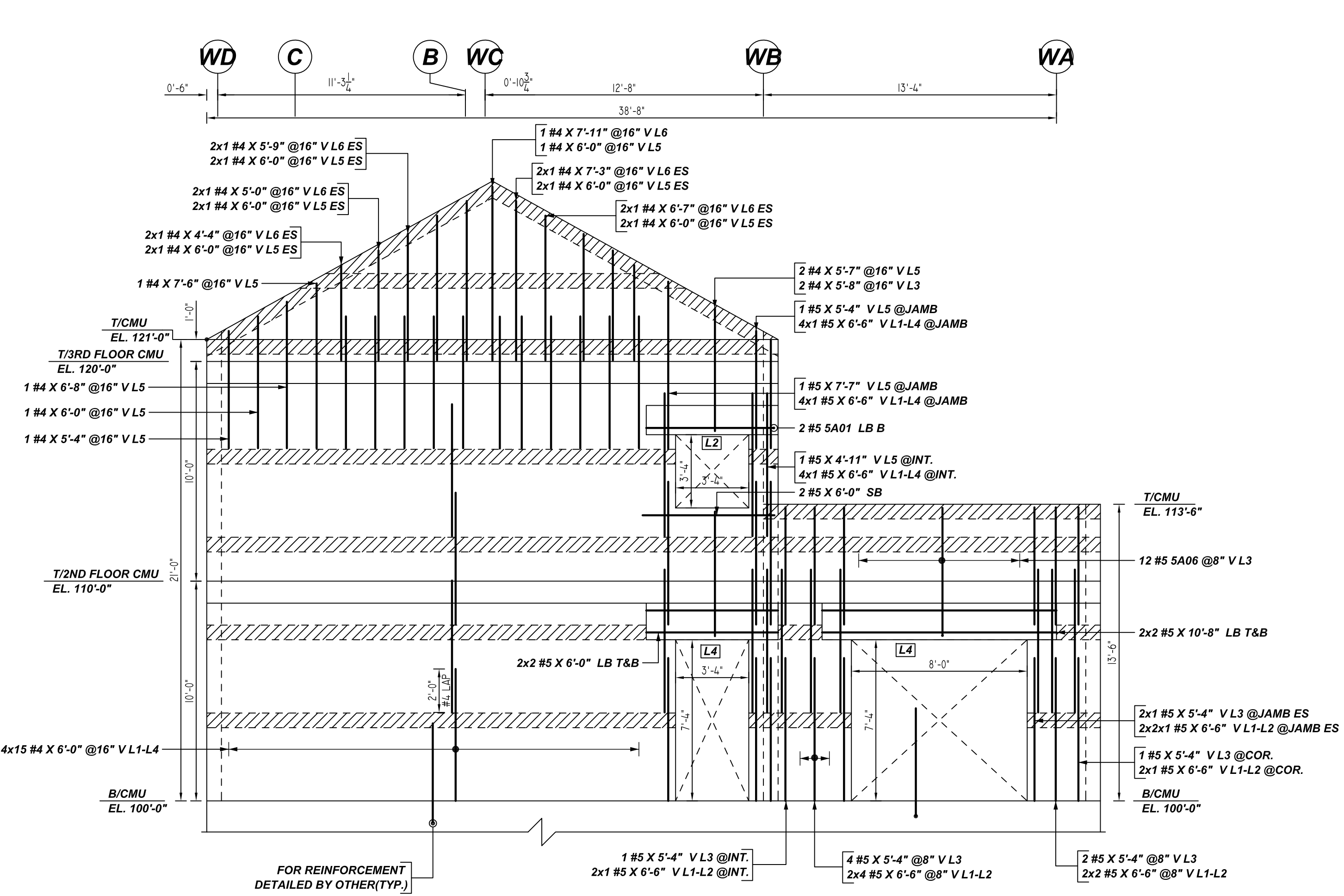
LOCATION	MIN. COVER
WALL TOP & BOTTOM	2" CLR

ALL BARS IN THIS DRAWING
ASTM A615 GRADE 60
BLACK UNCOATED

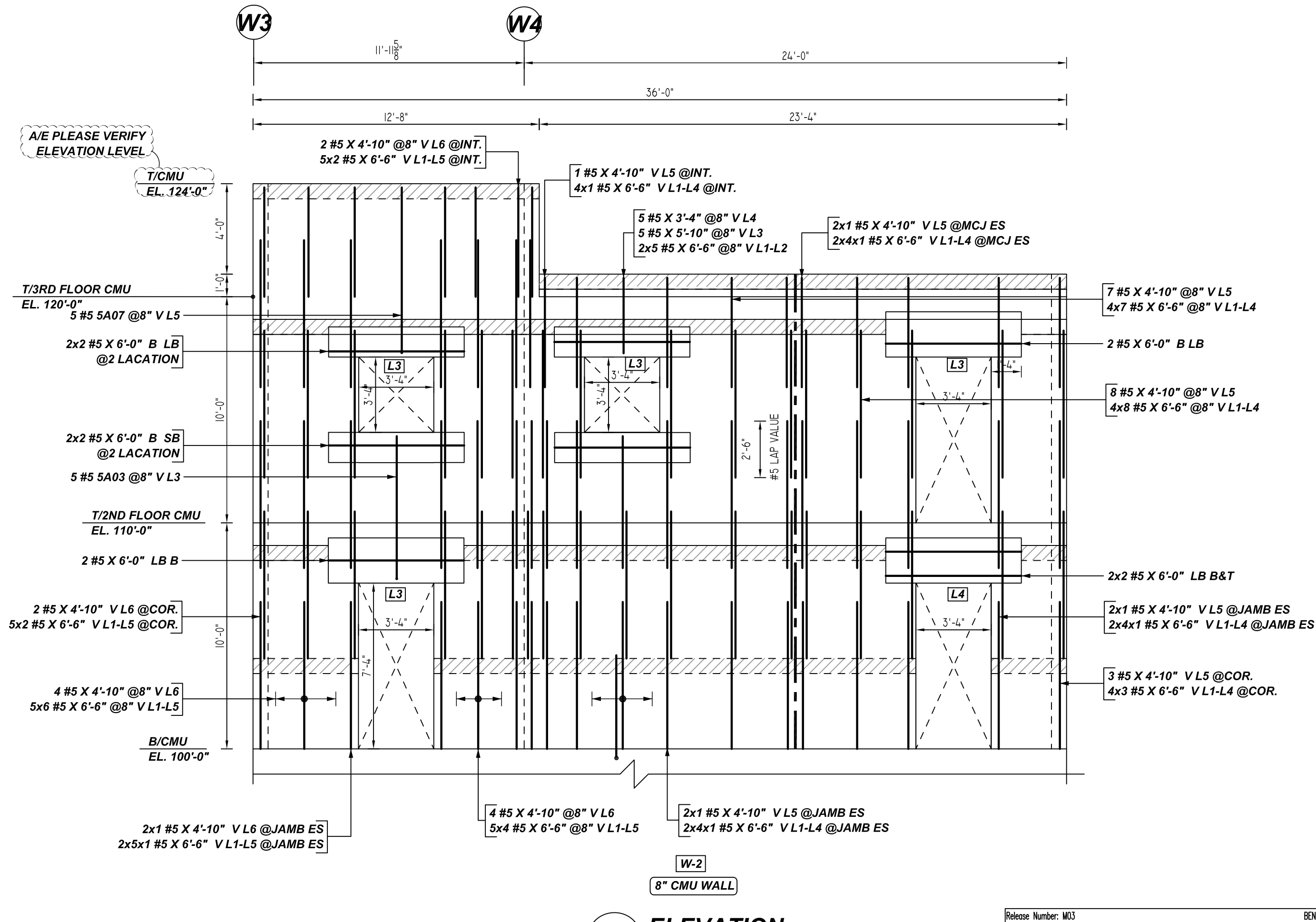
- PLACING PLAN NOTES**
- THIS DRAWINGS FOR REBAR PLACEMENT ASSISTANCE ONLY. REFER TO STRUCTURAL DETAILS FOR CONTRACT REQUIREMENTS
 - SECTIONS/DETAILS ON PLACING PLAN ARE FOR REFERENCE AND ARE TO BE USED IN CONJUNCTION WITH CONTRACT DRAWINGS FOR CSRS MANUAL OF STANDARD PRACTICE
 - REINFORCING STEEL IS DETAILED PER CONTRACT DOCUMENTS ONLY AS SHOWN CODE COMPLIANCE REQUIREMENTS ARE THE RESPONSIBILITY OF ENGINEER AND/OR CONTRACTOR
 - THE CONTRACTOR UNDERSTANDS THAT THE ENGINEER SHOULD ALWAYS VERIFY SHOP DRAWINGS IF TIME DOES NOT ALLOW FOR APPROVALS. TEXAS REBAR IS NOT HELD RESPONSIBLE FOR UNAPPROVED SHOP DRAWINGS USED IN PLACING CSRS MANUAL OF STANDARD PRACTICE. THE CUSTOMER AND ENGINEER SHOULD REVIEW SHOP DRAWINGS PRIOR TO INSTALLATION TO VERIFY ACCURACY TO STRUCTURAL DRAWINGS.
- PLACING PLAN NOTES**
- DIMENSIONS ELEVATIONS & DRAWINGS SCALES SHOWN ARE FOR REFERENCE ONLY. CONTRACTOR TO PROVIDE LINES, GRADES & TEMPLATES REQUIRED FOR PLACEMENTS
 - SECTIONS & DETAILS MAY NOT BE SHOWN ON ALL PLACING PLANS. KEEP STRUCTURAL DRAWINGS ON SITE FOR USE
 - SOME LAP LENGTHS WILL BE ROUNDED UP IN DETAILING TO PROVIDE FOR 1" INCREMENTS FOR LAPS
 - LAP OR EMBEDMENT LENGTHS SHOWN IN SPECIFIC DETAILS WILL SUPPRESS LAPS IN THE LAP SCHEDULE
 - VERIFY PLACEMENT DRAWINGS TO LATEST ISSUE OF JOB RECORD DRAWING FOR POSSIBLE REVISIONS OR FIELD CHANGES
 - TYPICAL NOTES & DETAILS ARE USED THROUGHOUT ENTIRE PROJECT & APPLY UNLESS NOTED OTHERWISE

NO.	DESCRIPTION	DATE	BY
		FOR APPROVAL	DATE

JOB NAME: MANSFIELD TRAINING TOWER
JOB NO: 22108
DETAILS OF: CMU WALL REINFORCEMENT DETAILS
DATE: 08-25-22
DETAILER: SSSTR
DRWG: M02
TEXAS REBAR, LLC 817-487-1672

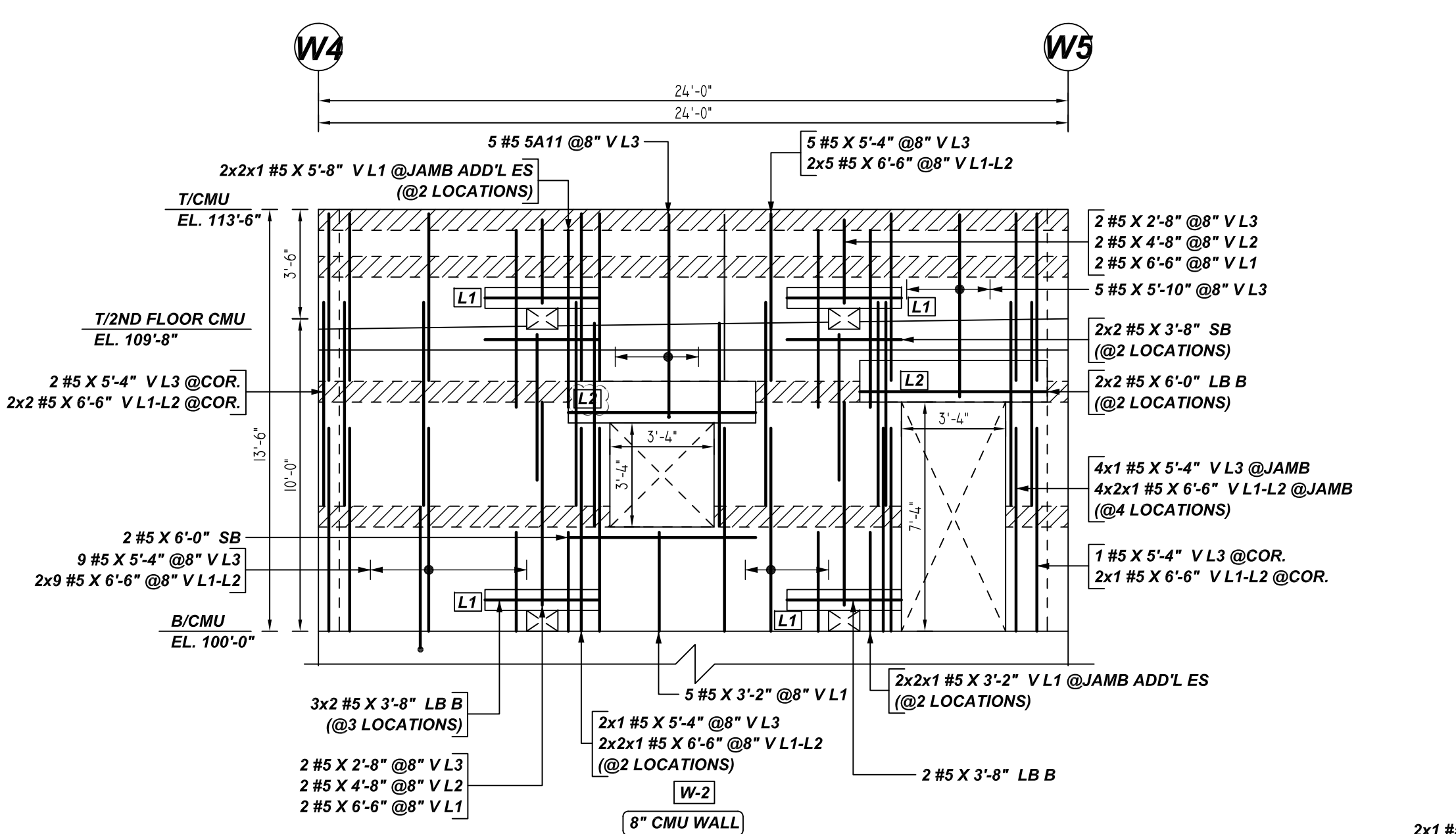
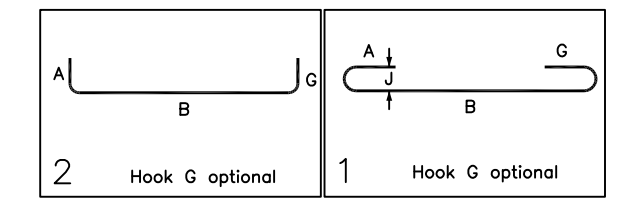


D ELEVATION
 REF: A-11 & A-31
 SCALE: 1/4" = 1'-0"

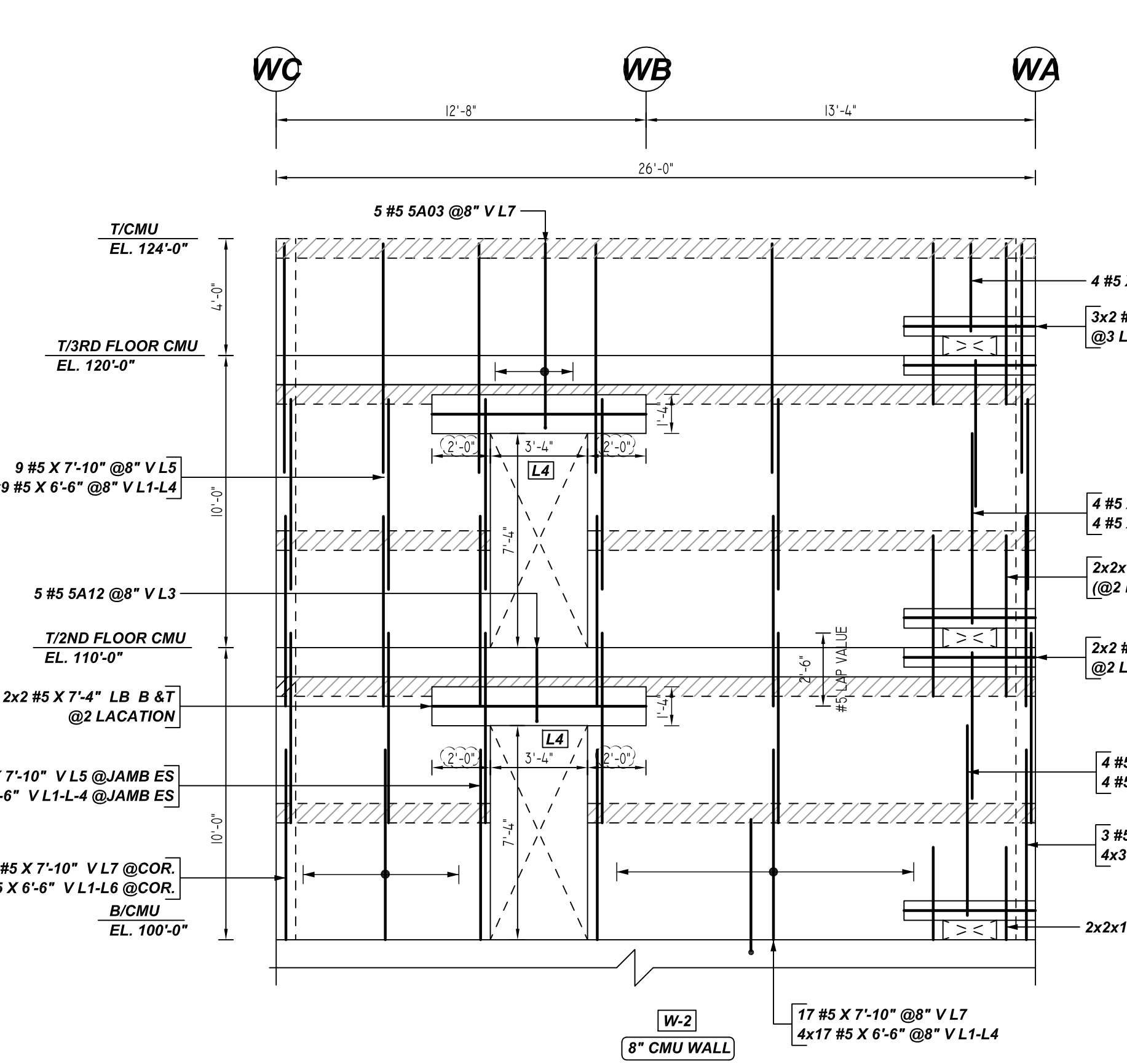


G ELEVATION
 REF: A-11 & A-31
 SCALE: 1/4" = 1'-0"

Bar No.	Qty	Size	Total Length	Type	X	Y	Z	BENDING DETAILS							
5A01	2	#5	6'-8"	2	0'-10"	5'-10"									
5A03	10	#5	6'-11"	1	0'-7"	6'-4"									
5A06	12	#5	6'-5"	1	0'-7"	5'-10"									
5A07	5	#5	7'-11"	1	0'-7"	7'-4"									
5A11	5	#5	7'-1"	1	0'-7"	6'-8"									
5A12	5	#5	3'-1"	1	0'-7"	2'-8"									



E ELEVATION
 REF: A-11 & A-31
 SCALE: 1/4" = 1'-0"



J ELEVATION
 REF: A-11 & A-31
 SCALE: 1/4" = 1'-0"

LEGEND

- NO. OF LOCATION
- NO. OF LIFT
- NO. OF BARS
- NO. OF LIFT (COR) NO. OF LOCATION
- NO. OF BARS
- LIFT 1 TO LIFT 6
- 2x1 #5x6'-6" V L1-L6

LAP SCHEDULE
 Per ACI:318 (12.2.2)

BAR#	48 x BAR DIA	LENGTHS
#3	1'-6"	
#4	2'-0"	
#5	2'-6"	
#6	3'-0"	
#7	3'-6"	
#8	4'-0"	
#9	4'-7"	
#10	5'-1"	
#11	5'-8"	

TYPICAL REINFORCING BAR CLEARANCE TABLE

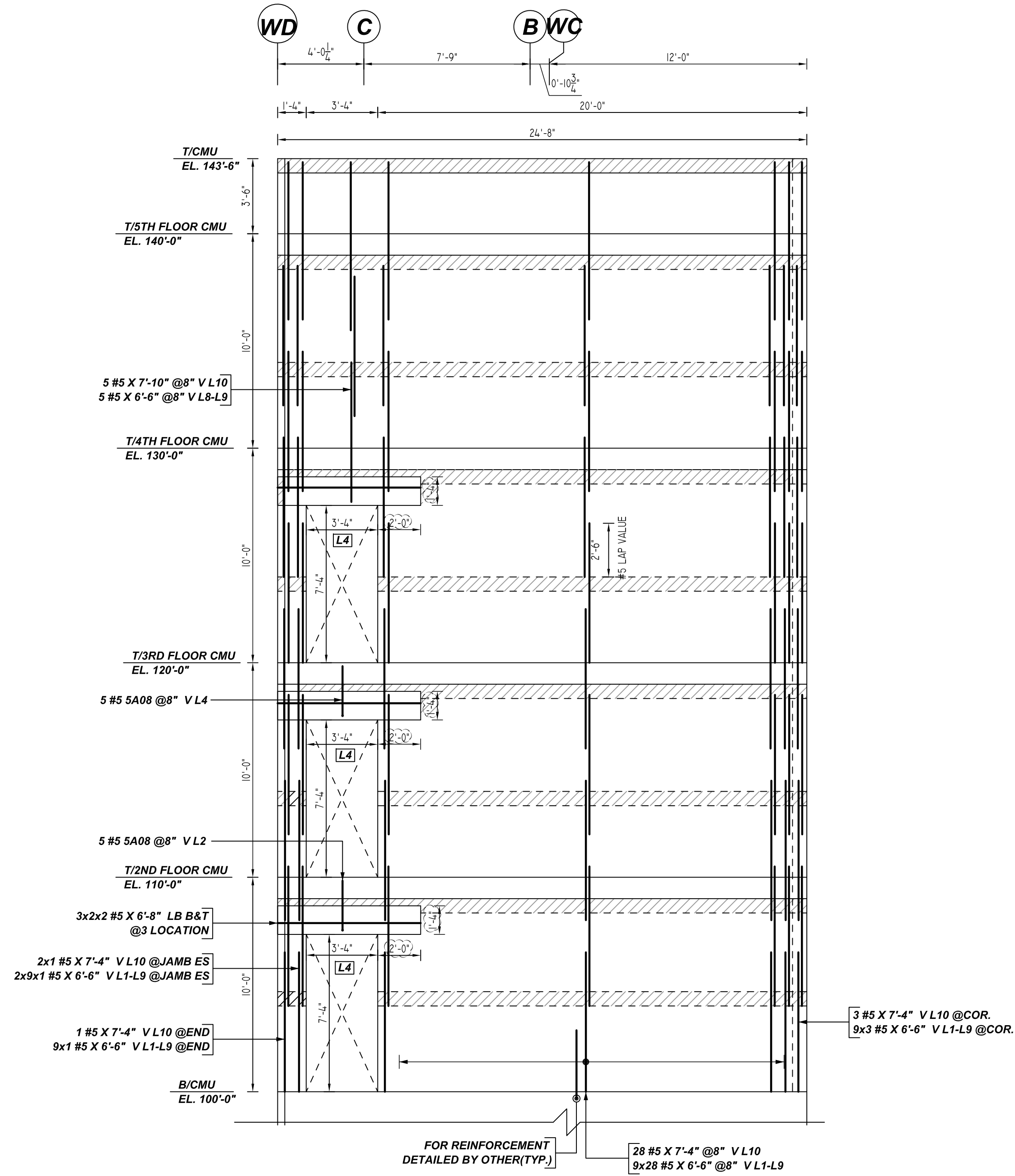
LOCATION	MIN. COVER
WALL TOP & BOTTOM	2" CLR

**ALL BARS IN THIS DRAWING
 ASTM A615 GRADE 60
 BLACK UNCOATED**

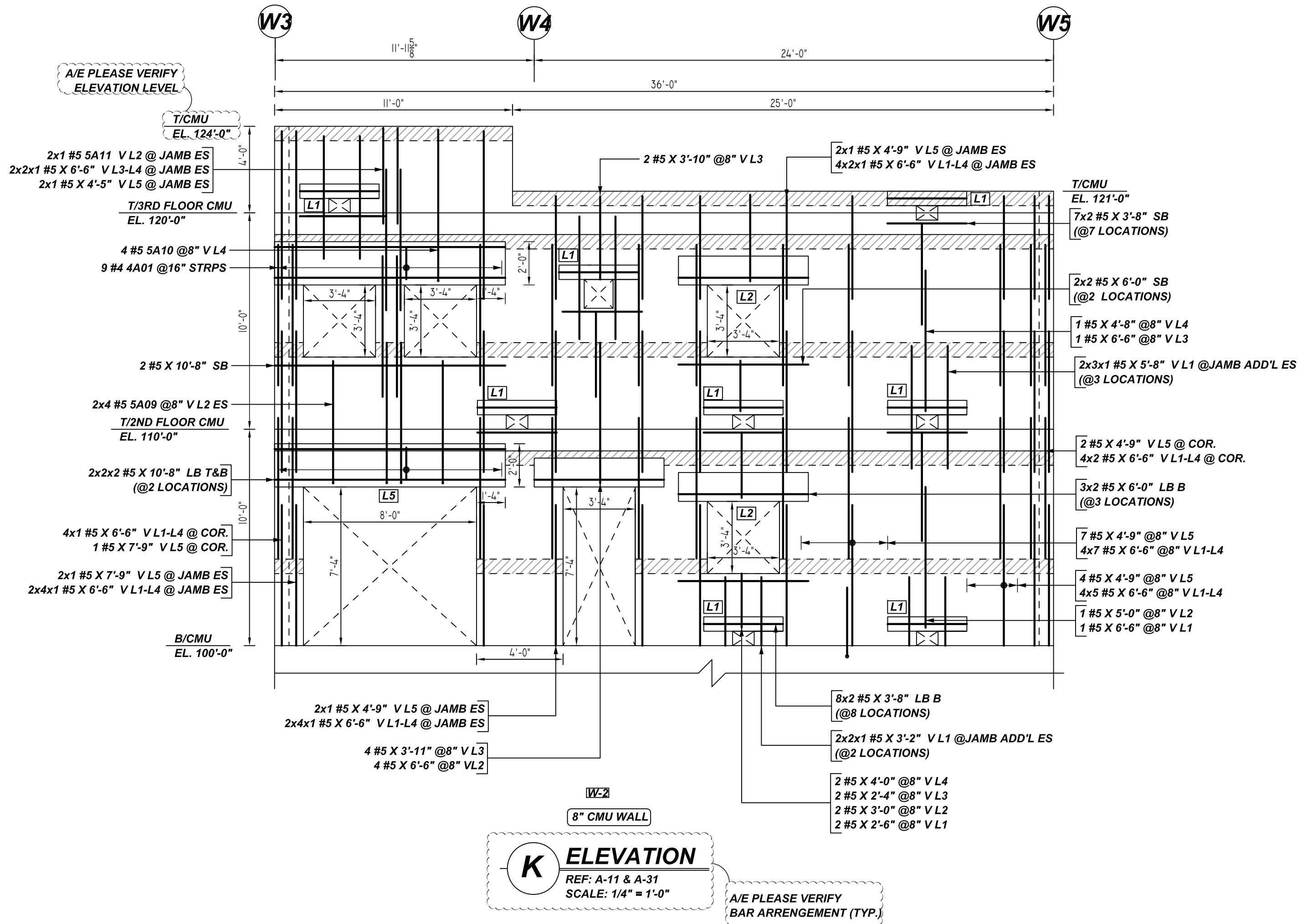
- PLACING PLAN NOTES**
- THIS DRAWING FOR REBAR PLACEMENT ASSISTANCE ONLY; REFER TO STRUCTURAL DETAILS FOR CONTRACT REQUIREMENTS
 - SECTIONS DETAILS DIMENSIONS ON PLACING PLAN ARE FOR REFERENCE AND ARE TO BE USED IN CONJUNCTION WITH CONTRACT DRAWING FOR CRSI MANUAL OF STANDARD PRACTICE
 - REINFORCING STEEL IS DETAILED PER CONTRACT DOCUMENTS ONLY AS SHOWN CODE COMPLIANCE REQUIREMENTS ARE THE RESPONSIBILITY OF ENGINEER AND/OR CONTRACTOR
 - THE CONTRACTOR UNDERSTANDS THAT THE ENGINEER SHOULD ALWAYS VERIFY SHOP DRAWINGS IF TIME DOES NOT ALLOW FOR APPROVALS, TEXAS REBAR IS NOT HELD RESPONSIBLE FOR UNAPPROVED SHOP DRAWINGS USED IN PLACING CRSI MANUAL OF STANDARD PRACTICE THE CUSTOMER AND ENGINEER SHOULD REVIEW SHOP DRAWINGS PRIOR TO INSTALLATION TO VERIFY ACCURACY TO STRUCTURAL DRAWINGS.
- PLACING PLAN NOTES**
- DIMENSIONS ELEVATIONS & DRAWINGS SCALES SHOWN ARE FOR REFERENCE ONLY CONTRACTOR TO PROVIDE LINES, GRADES & TEMPLATES REQUIRED FOR PLACEMENTS
 - SECTIONS & DETAILS MAY NOT BE SHOWN ON ALL PLACING PLANS. KEEP STRUCTURAL DRAWINGS ON SITE FOR USE
 - SOME LAP LENGTHS WILL BE ROUNDED UP IN DETAILING TO PROVIDE FOR 1" INCREMENTS FOR LAPS
 - LAP OR EMBEDMENT LENGTHS SHOWN IN SPECIFIC DETAILS WILL SUPPRESS LAPS IN THE LAP SCHEDULE
 - VERIFY PLACEMENT DRAWINGS TO LATEST ISSUE OF JOB RECORD DRAWING FOR POSSIBLE REVISIONS OR FIELD CHANGES
 - TYPICAL NOTES & DETAILS ARE USED THROUGHOUT ENTIRE PROJECT & APPLY UNLESS NOTED OTHERWISE.

NO.	DESCRIPTION	DATE	BY	FOR APPROVAL
		MADE	DATE	DATE

JOB NAME: MANSFIELD TRAINING TOWER
 JOB NO: 22108
 DETAILS OF: CMU WALL REINFORCEMENT DETAILS
 DATE: 08-25-22
 DETAILER: SSSTR
 DRWG: M03
 TEXAS REBAR, LLC 817-487-1672

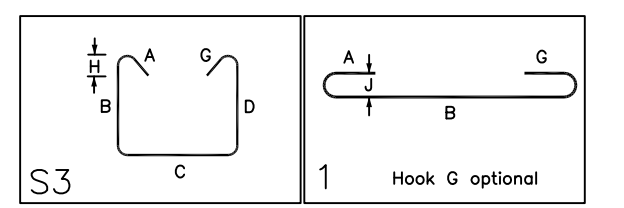


H ELEVATION
 REF: A-11 & A-31
 SCALE: 1/4" = 1'-0"



K ELEVATION
 REF: A-11 & A-31
 SCALE: 1/4" = 1'-0"

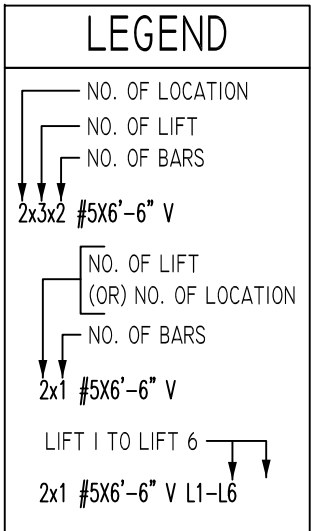
Bar Mark	Qty	Size	Total Length	Type	X	Y	Z	W	V	U	T	S	R	Q	P	O	N	M	L	K	J	I	H	G	F	E	D	C	B	A
4M1	9	#4	3'-1"	S3																										
5M6	10	#5	2'-11"	1	0'-4 3/4"	0'-5"																								
5M9	8	#5	6'-5"	1	0'-7"	5'-4"																								
5M10	4	#5	7'-1"	1	0'-7"	7'-0"																								
5M11	2	#5	7'-1"	1	0'-7"	6'-8"																								



LAP SCHEDULE

Per ACI 318 (12.2.2)

BAR#	LENGTHS
#3	1'-6"
#4	2'-0"
#5	2'-6"
#6	3'-0"
#7	3'-6"
#8	4'-0"
#9	4'-7"
#10	5'-1"
#11	5'-8"



LOCATION	MIN. COVER
WALL TOP & BOTTOM	2" CLR

**ALL BARS IN THIS DRAWING
 ASTM A615 GRADE 60
 BLACK UNCOATED**

- PLACING PLAN NOTES**
- THIS DRAWINGS FOR REBAR PLACEMENT ASSISTANCE ONLY, REFER TO STRUCTURAL DETAILS FOR CONTRACT REQUIREMENTS
 - SECTIONS/DETAILS/DIMENSIONS ON PLACING PLAN ARE FOR REFERENCE AND ARE TO BE USED IN CONJUNCTION WITH CONTRACT DRAWING FOR CRSI MANUAL OF STANDARD PRACTICE
 - REINFORCING STEEL IS DETAILED PER CONTRACT DOCUMENTS ONLY AS SHOWN CODE COMPLIANCE REQUIREMENTS ARE THE RESPONSIBILITY OF ENGINEER AND/OR CONTRACTOR
 - THE CONTRACTOR UNDERSTANDS THAT THE ENGINEER SHOULD ALWAYS VERIFY SHOP DRAWINGS IF TIME DOES NOT ALLOW FOR APPROVALS, TEXAS REBAR IS NOT HELD RESPONSIBLE FOR UNAPPROVED SHOP DRAWINGS USED IN PLACING CRSI MANUAL OF STANDARD PRACTICE THE CUSTOMER AND ENGINEER SHOULD REVIEW SHOP DRAWINGS PRIOR TO INSTALLATION TO VERIFY ACCURACY TO STRUCTURAL DRAWINGS.
- PLACING PLAN NOTES**
- DIMENSIONS ELEVATIONS & DRAWINGS SCALES SHOWN ARE FOR REFERENCE ONLY CONTRACTOR TO PROVIDE LINES, GRADES & TEMPLATES REQUIRED FOR PLACEMENTS
 - SECTIONS & DETAILS MAY NOT BE SHOWN ON ALL PLACING PLANS. KEEP STRUCTURAL DRAWINGS ON SITE FOR USE
 - SOME LAP LENGTHS WILL BE ROUNDED UP IN DETAILING TO PROVIDE FOR 1" INCREMENTS FOR LAPS
 - LAP OR EMBEDMENT LENGTHS SHOWN IN SPECIFIC DETAILS WILL SUPPRESS LAPS IN THE LAP SCHEDULE
 - VERIFY PLACEMENT DRAWINGS TO LATEST ISSUE OF JOB RECORD DRAWING FOR POSSIBLE REVISIONS OR FIELD CHANGES
 - TYPICAL NOTES & DETAILS ARE USED THROUGHOUT ENTIRE PROJECT & APPLY UNLESS NOTED OTHERWISE

NO.	REVISION	DESCRIPTION	DATE	BY
			DATE	BY

JOB NAME: MANSFIELD TRAINING TOWER	
JOB NO: 22108	
DETAILS OF: CMU WALL REINFORCEMENT	DATE: 08-25-22
DETAILS	
DETAILER: SSSTR	DRWG: M04
TEXAS REBAR, LLC 817-487-1672	