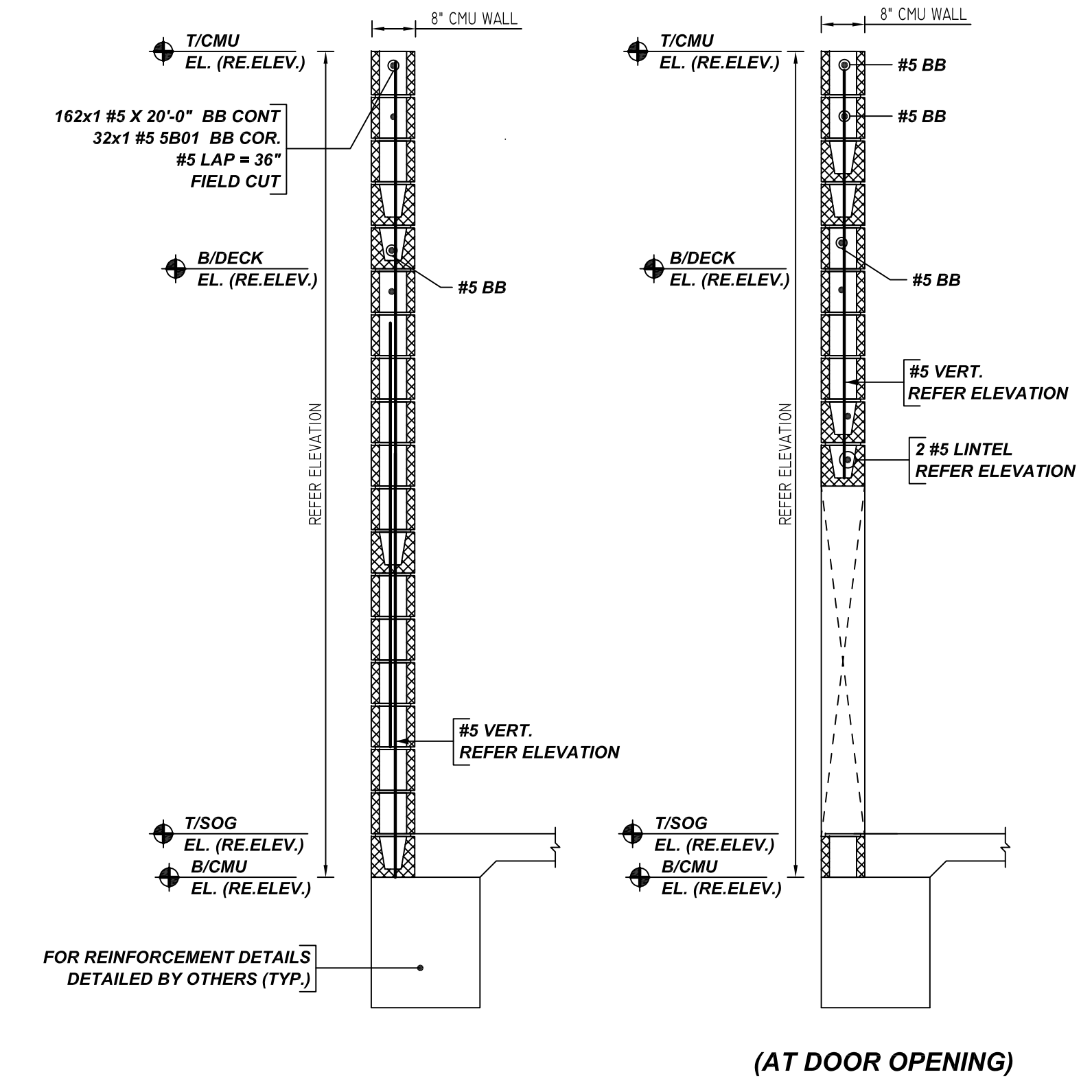


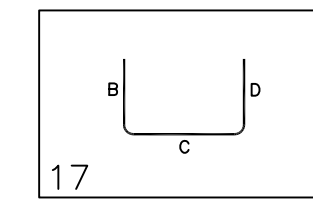
**AREA-B CMU WALL PLAN LAYOUT**  
 REF: S-1.1B  
 SCALE: 3/32" = 1'-0"



**TYPICAL CMU WALL DETAILS**  
 REF: S-1.1B  
 SCALE: 1/2" = 1'-0"

**TYPICAL VERTICAL BAR LAPPING DETAIL**

Bar No.	Qty	Size	Total Length	Type	X	Y	Z	BENDING DETAILS																
5B01	33	#5	6'-0"	17				5'-0"	3'-0"															

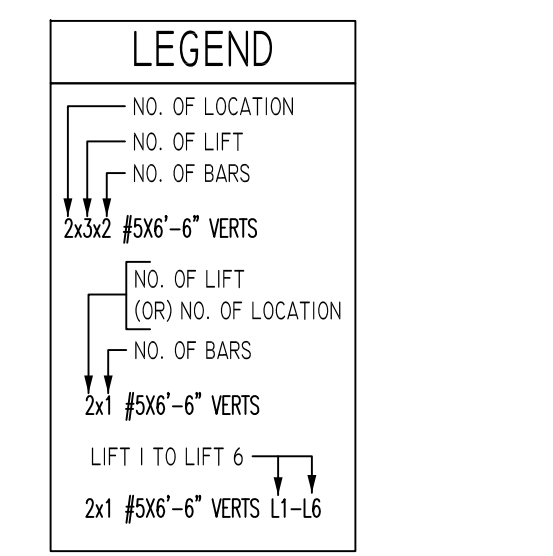


**LAP SCHEDULE**  
 3000 PSI (CLASS-B) CASE - 1  
 Per ACI 318 (12.2.2)

BAR#	LENGTHS	
	TOP	OTHERS
#3	2'-4"	1'-10"
#4	3'-1"	2'-5"
#5	3'-11"	3'-0"
#6	4'-8"	3'-7"
#7	6'-9"	5'-3"
#8	7'-9"	6'-0"
#9	8'-9"	6'-9"
#10	9'-10"	7'-7"
#11	10'-11"	8'-5"

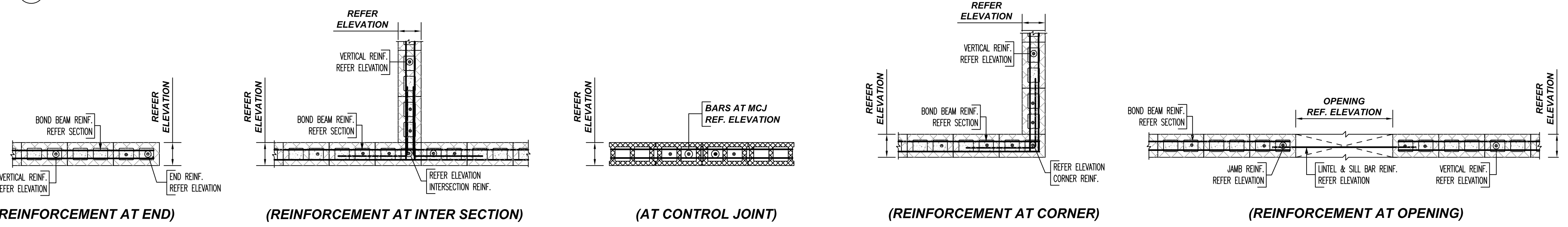
**TYPICAL REINFORCING BAR CLEARANCE TABLE**

LOCATION	MIN. COVER
CMU WALL TOP & SIDES	2" CLR

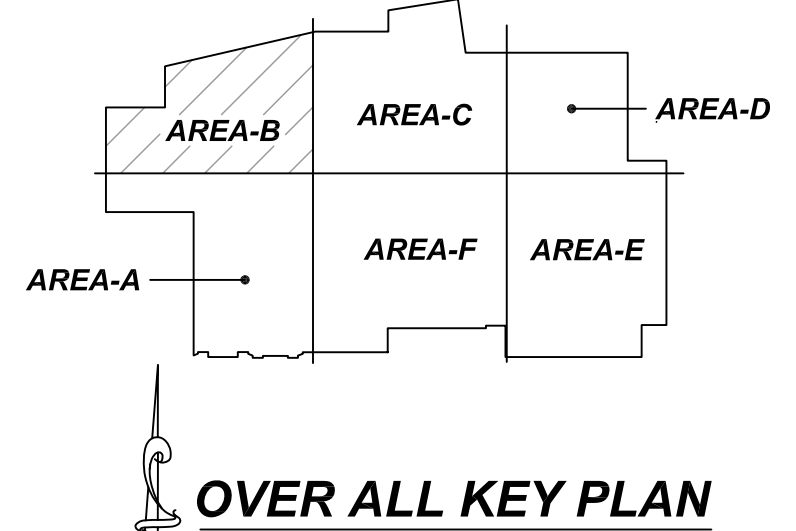


**ALL BARS IN THIS DRAWING**  
 ASTM A615 GRADE 60  
 BLACK UNCOATED

A/E PLEASE VERIFY THE LAP SCHEDULE



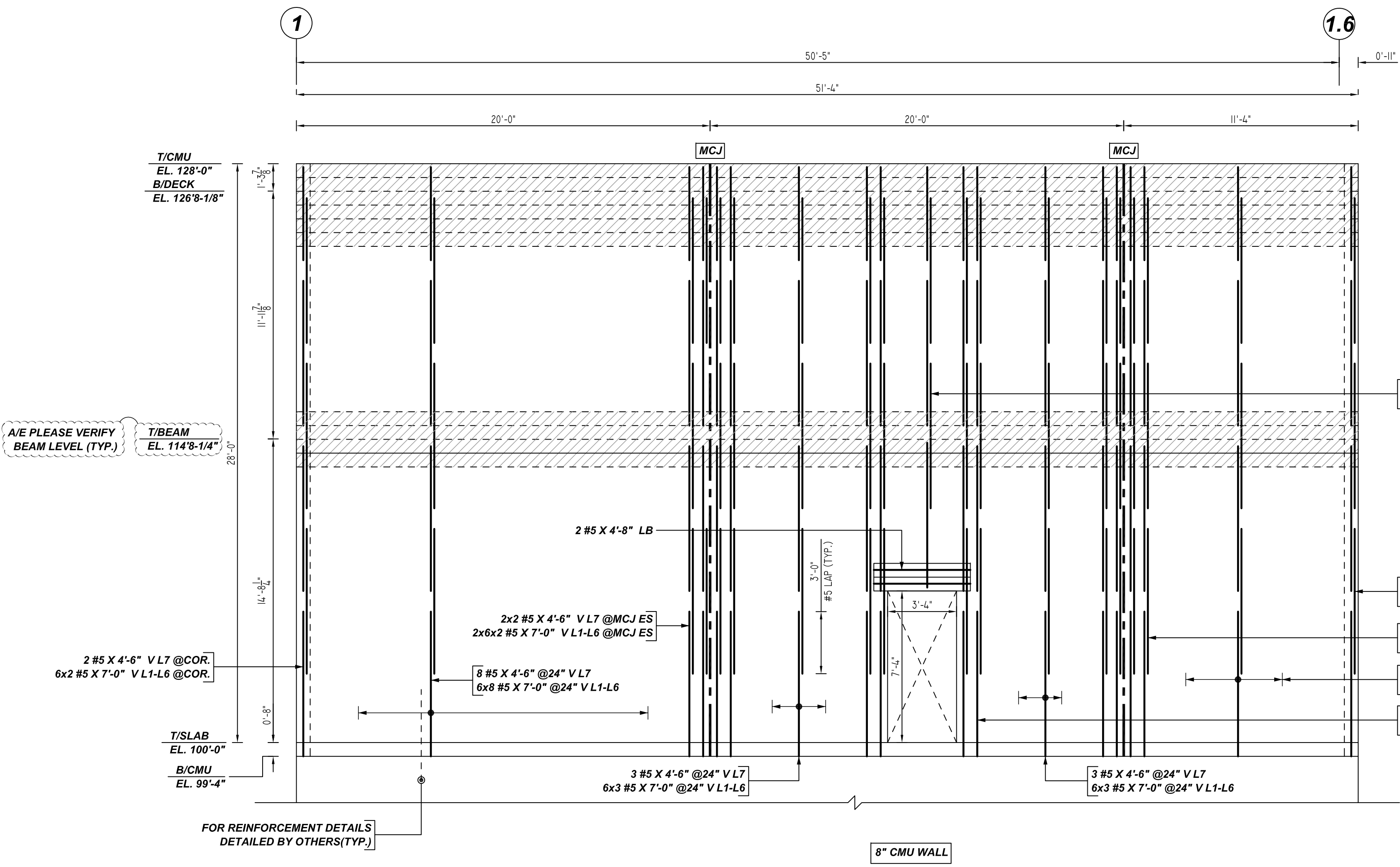
**TYPICAL CMU WALL REINFORCEMENT DETAILS**  
 REF: S-2.2  
 SCALE: 1/2" = 1'-0"



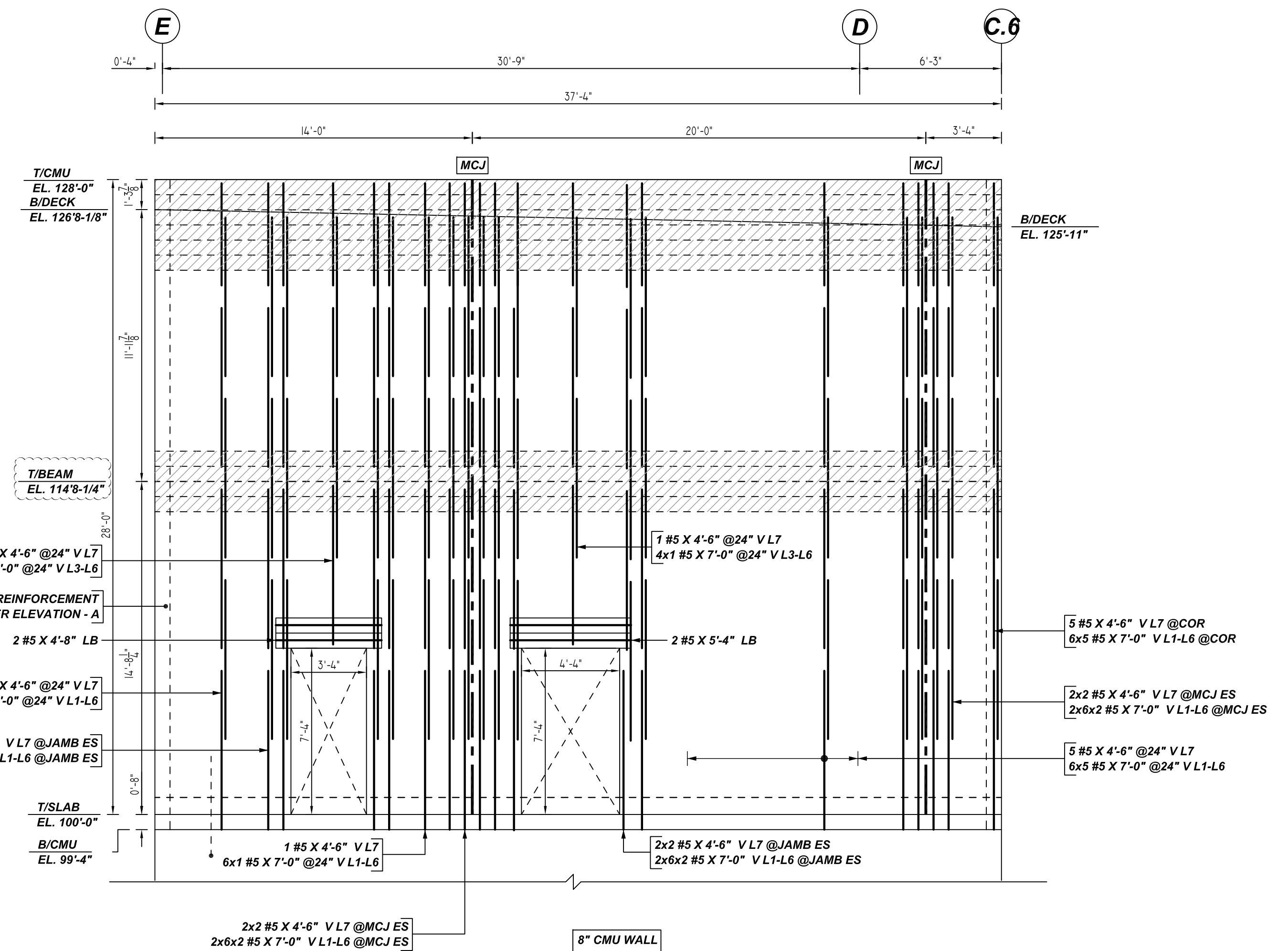
**OVER ALL KEY PLAN**  
 REF: S-1.1  
 SCALE: NTS

- PLACING PLAN NOTES**
- THIS DRAWINGS FOR REBAR PLACEMENT ASSISTANCE ONLY. REFER TO STRUCTURAL DETAILS FOR CONTRACT REQUIREMENTS
  - SECTIONS & DETAILS DIMENSIONS ON PLACING PLAN ARE FOR REFERENCE AND ARE TO BE USED IN CONJUNCTION WITH CONTRACT DRAWING FOR CRSI MANUAL OF STANDARD PRACTICE
  - REINFORCING STEEL IS DETAILED PER CONTRACT DOCUMENTS ONLY AS SHOWN CODE COMPLIANCE REQUIREMENTS ARE THE RESPONSIBILITY OF ENGINEER AND/OR CONTRACTOR
  - THE CONTRACTOR UNDERSTANDS THAT THE ENGINEER SHOULD ALWAYS VERIFY SHOP DRAWINGS IF TIME DOES NOT ALLOW FOR APPROVALS. TEXAS REBAR IS NOT HELD RESPONSIBLE FOR UNAPPROVED SHOP DRAWINGS USED IN PLACING CRSI MANUAL OF STANDARD PRACTICE. THE CUSTOMER AND ENGINEER SHOULD REVIEW SHOP DRAWINGS PRIOR TO INSTALLATION TO VERIFY ACCURACY TO STRUCTURAL DRAWINGS.
- PLACING PLAN NOTES**
- DIMENSIONS ELEVATIONS & DRAWINGS SCALES SHOWN ARE FOR REFERENCE ONLY. CONTRACTOR TO PROVIDE LINES, GRADES & TEMPLATES REQUIRED FOR PLACEMENTS
  - SECTIONS & DETAILS MAY NOT BE SHOWN ON ALL PLACING PLANS. KEEP STRUCTURAL DRAWINGS ON SITE FOR USE
  - SOME LAP LENGTHS WILL BE ROUNDED UP IN DETAILING TO PROVIDE FOR 1" INCREMENTS FOR LAPS
  - LAP OR EMBEDMENT LENGTHS SHOWN IN SPECIFIC DETAILS WILL SUPPRESS LAPS IN THE LAP SCHEDULE
  - VERIFY PLACEMENT DRAWINGS TO LATEST ISSUE OF JOB RECORD DRAWING FOR POSSIBLE REVISIONS OR FIELD CHANGES
  - TYPICAL NOTES & DETAILS ARE USED THROUGHOUT ENTIRE PROJECT & APPLY UNLESS NOTED OTHERWISE

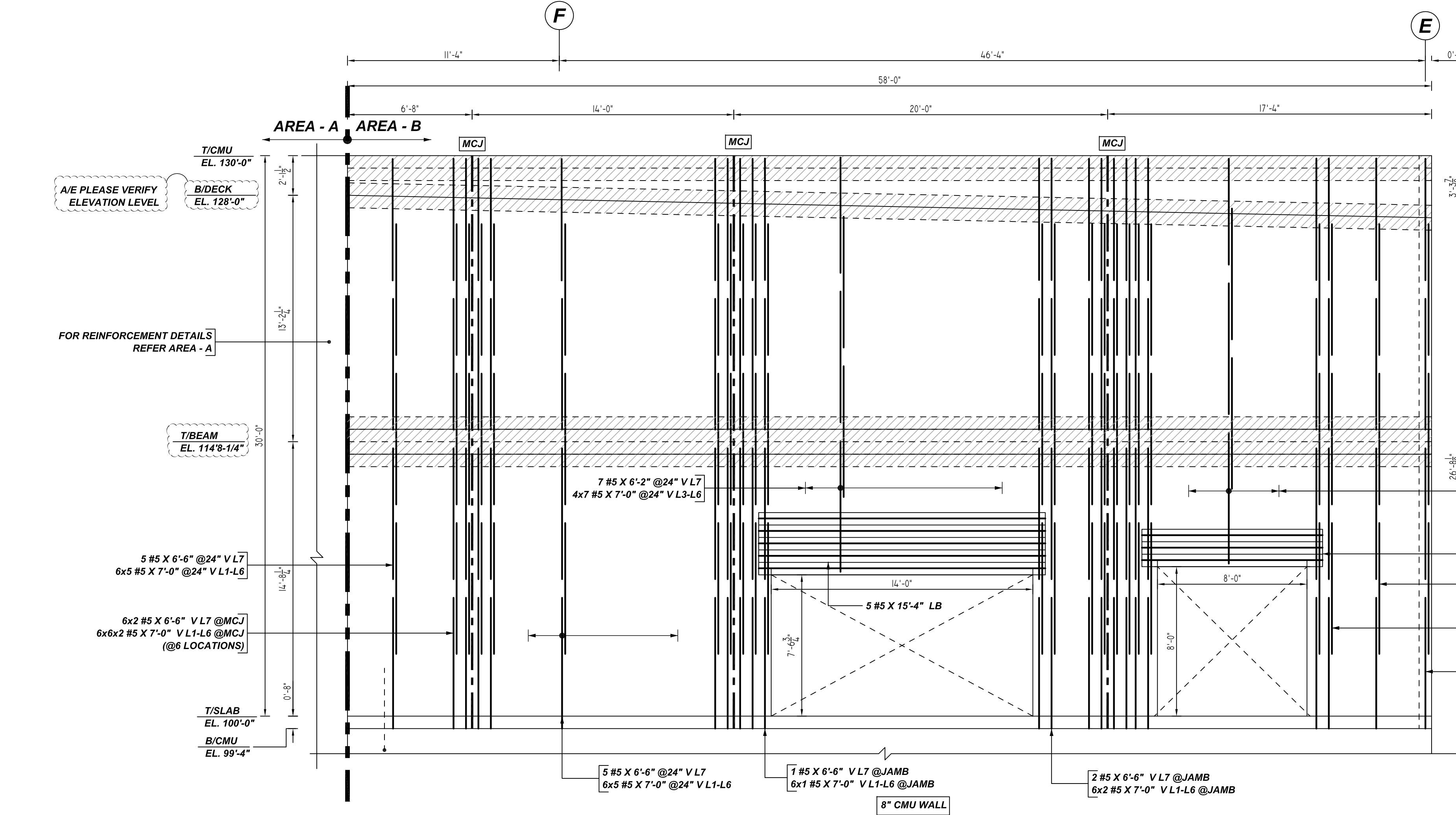
NO.	FOR APPROVAL	DATE	DESCRIPTION	JOB NAME: HEB GROCERY #796 ALLEN	
				DATE	DESCRIPTION
1				JOB NO: 22131	DATE: 10-27-22
2				DETAILS OF: AREA - B CMU WALL REINFORCEMENT DETAILS	DATE: 10-27-22
3				DETAILER: SSTR	DRWG: M04
4				TEXAS REBAR, LLC 817-487-1672	



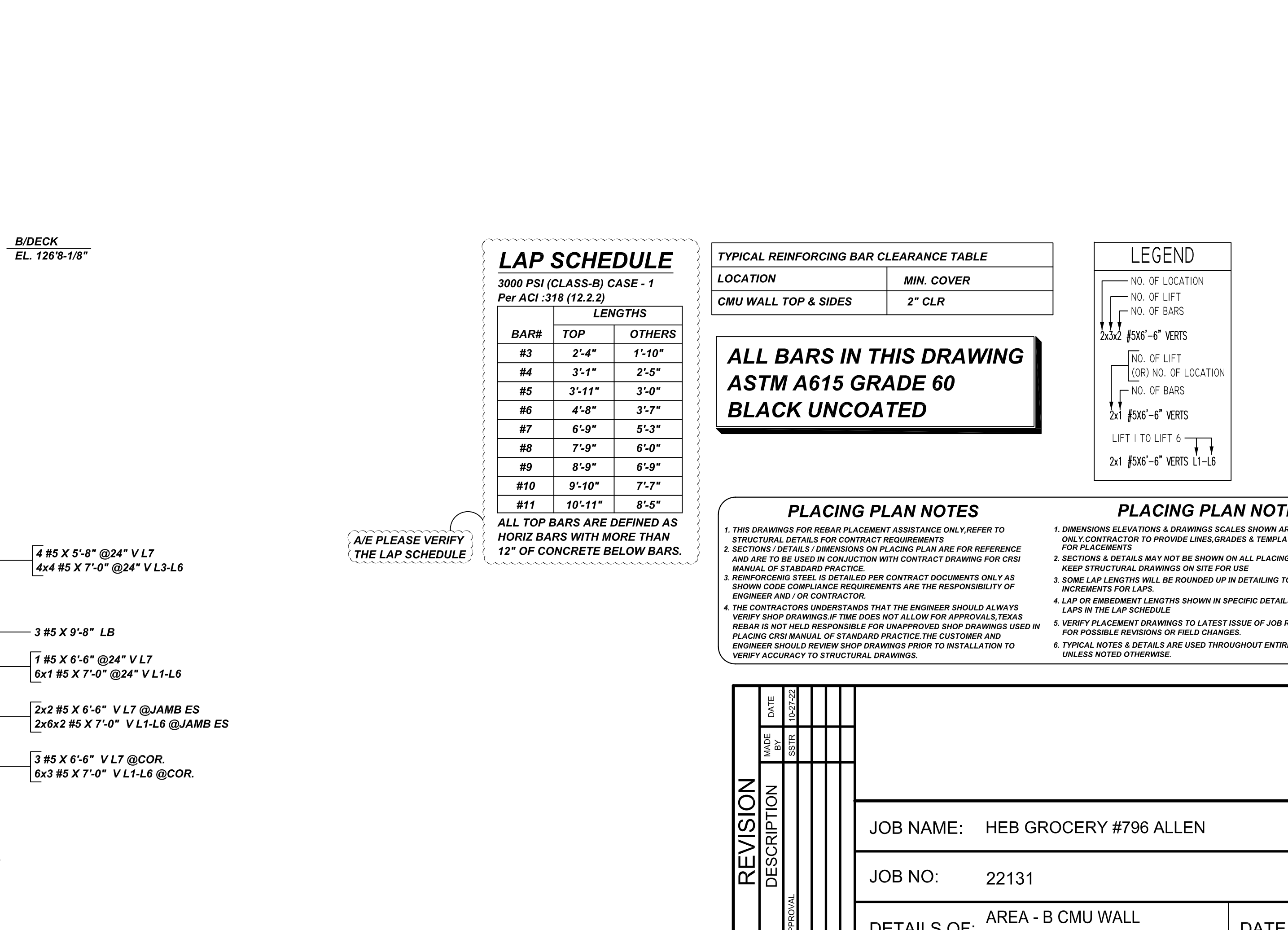
**A ELEVATION**  
 REF: S1.1B, S2.1 & A.1.0  
 SCALE: 1/4" = 1'-0"



**B ELEVATION**  
 REF: S1.1B, S2.1 & A.1.0  
 SCALE: 1/4" = 1'-0"



**D ELEVATION**  
 REF: S1.1B, S2.1 & A.1.0  
 SCALE: 1/4" = 1'-0"



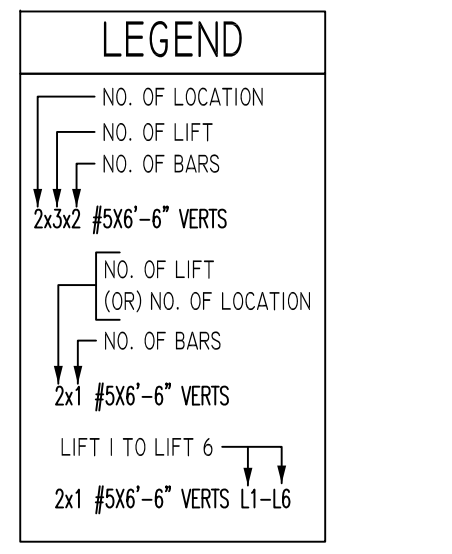
**LAP SCHEDULE**  
 3000 PSI (CLASS-B) CASE - 1  
 Per ACI 318 (12.2.2)

BAR#	LENGTHS	
	TOP	OTHERS
#3	2'-4"	1'-10"
#4	3'-1"	2'-5"
#5	3'-11"	3'-0"
#6	4'-8"	3'-7"
#7	6'-9"	5'-3"
#8	7'-9"	6'-0"
#9	8'-9"	6'-9"
#10	9'-10"	7'-7"
#11	10'-11"	8'-5"

ALL TOP BARS ARE DEFINED AS HORIZ BARS WITH MORE THAN 12" OF CONCRETE BELOW BARS.

**TYPICAL REINFORCING BAR CLEARANCE TABLE**

LOCATION	MIN. COVER
CMU WALL TOP & SIDES	2" CLR

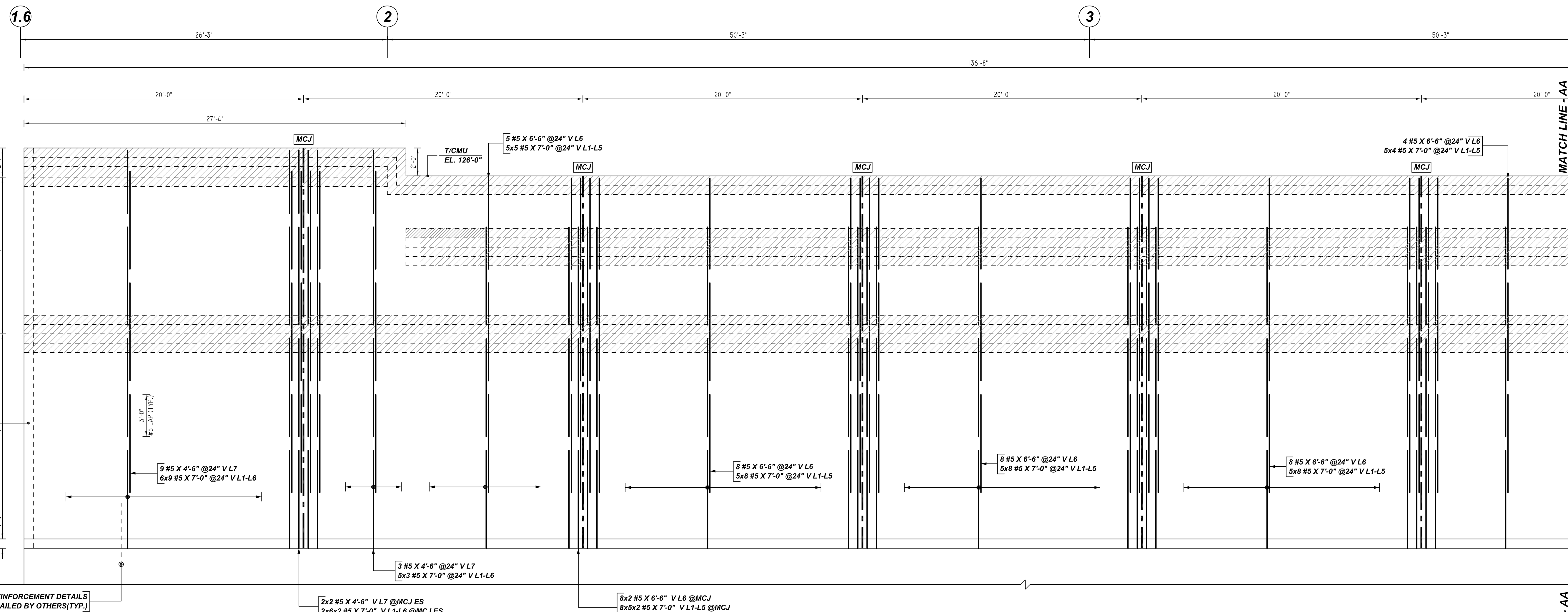


**ALL BARS IN THIS DRAWING**  
 ASTM A615 GRADE 60  
 BLACK UNCOATED

- PLACING PLAN NOTES**
- THIS DRAWINGS FOR REBAR PLACEMENT ASSISTANCE ONLY, REFER TO STRUCTURAL DETAILS FOR CONTRACT REQUIREMENTS
  - SECTIONS & DETAILS DIMENSIONS ON PLACING PLAN ARE FOR REFERENCE AND ARE TO BE USED IN CONJUNCTION WITH CONTRACT DRAWING FOR CRSI MANUAL OF STANDARD PRACTICE
  - REINFORCING STEEL IS DETAILED PER CONTRACT DOCUMENTS ONLY AS SHOWN CODE COMPLIANCE REQUIREMENTS ARE THE RESPONSIBILITY OF ENGINEER AND/OR CONTRACTOR
  - THE CONTRACTOR UNDERSTANDS THAT THE ENGINEER SHOULD ALWAYS VERIFY SHOP DRAWINGS IF TIME DOES NOT ALLOW FOR APPROVALS, TEXAS REBAR IS NOT HELD RESPONSIBLE FOR UNAPPROVED SHOP DRAWINGS USED IN PLACING CRSI MANUAL OF STANDARD PRACTICE THE CUSTOMER AND ENGINEER SHOULD REVIEW SHOP DRAWINGS PRIOR TO INSTALLATION TO VERIFY ACCURACY TO STRUCTURAL DRAWINGS.
- PLACING PLAN NOTES**
- DIMENSIONS ELEVATIONS & DRAWINGS SCALES SHOWN ARE FOR REFERENCE ONLY CONTRACTOR TO PROVIDE LINES, GRADES & TEMPLATES REQUIRED FOR PLACEMENTS
  - SECTIONS & DETAILS MAY NOT BE SHOWN ON ALL PLACING PLANS. KEEP STRUCTURAL DRAWINGS ON SITE FOR USE
  - SOME LAP LENGTHS WILL BE ROUNDED UP IN DETAILING TO PROVIDE FOR 1" INCREMENTS FOR LAPS
  - LAP ON EMBEDMENT LENGTHS SHOWN IN SPECIFIC DETAILS WILL SUPPRESS LAPS IN THE LAP SCHEDULE
  - VERIFY PLACEMENT DRAWINGS TO LATEST ISSUE OF JOB RECORD DRAWING FOR POSSIBLE REVISIONS OR FIELD CHANGES
  - TYPICAL NOTES & DETAILS ARE USED THROUGHOUT ENTIRE PROJECT & APPLY UNLESS NOTED OTHERWISE.

NO.	REVISION	DATE	DESCRIPTION	BY	CHECKED	DATE	JOB NAME:	JOB NO:	DETAILS OF:	DATE:	DETAILER:	DRWG:

TEXAS REBAR, LLC 817-487-1672

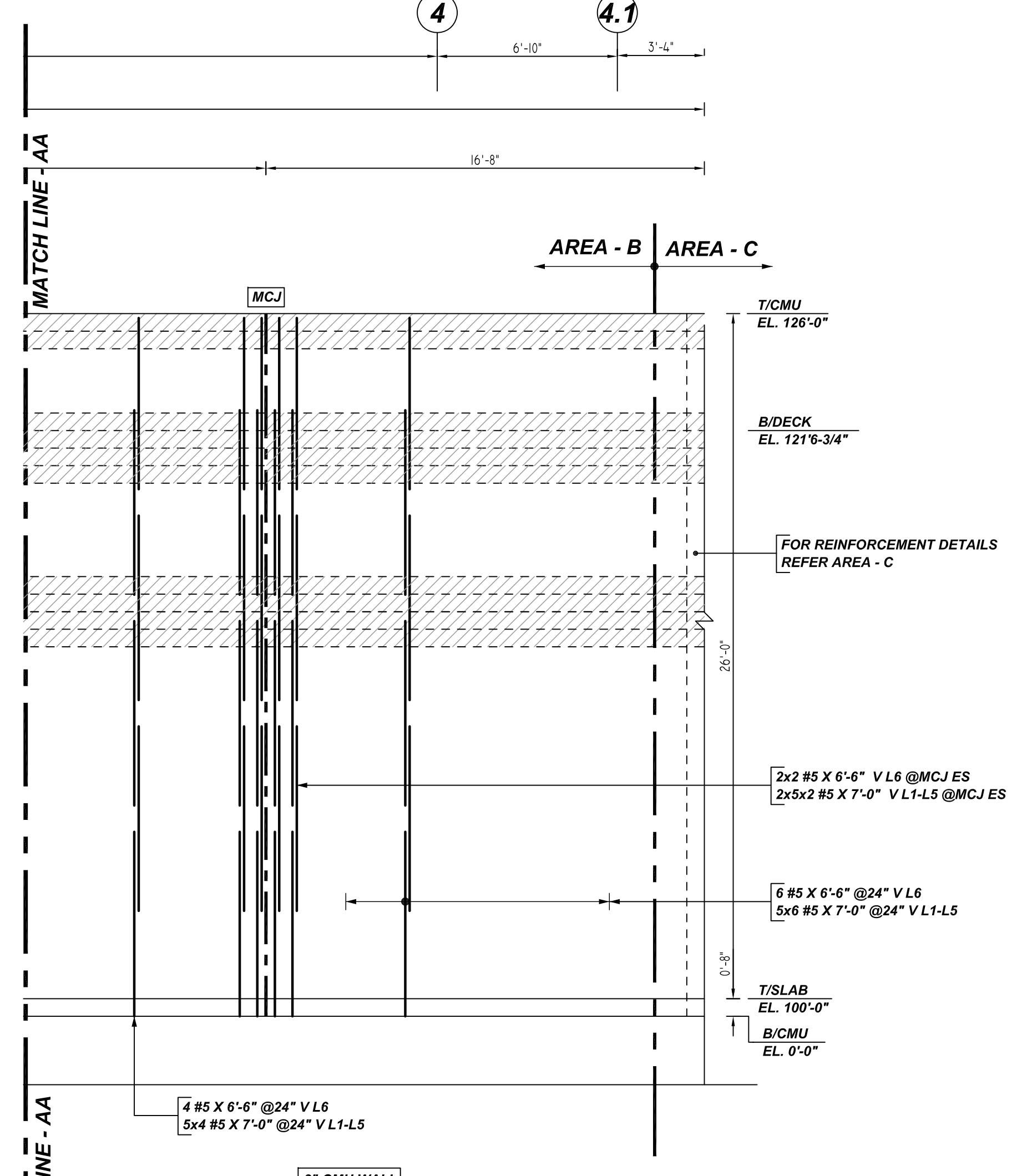


A/E PLEASE VERIFY BEAM LEVEL (TYP.)

CORNER REINFORCEMENT REFER ELEVATION - B

FOR REINFORCEMENT DETAILS DETAILED BY OTHERS (TYP.)

**8" CMU WALL**  
**C ELEVATION**  
 REF: S1.1B, S2.1 & A.1.0  
 SCALE: 1/4" = 1'-0"



**8" CMU WALL**  
**C ELEVATION**  
 REF: S1.1B, S2.1 & A.1.0  
 SCALE: 1/4" = 1'-0"

**LAP SCHEDULE**  
 3000 PSI (CLASS-B) CASE - 1  
 Per ACI 318 (12.2.2)

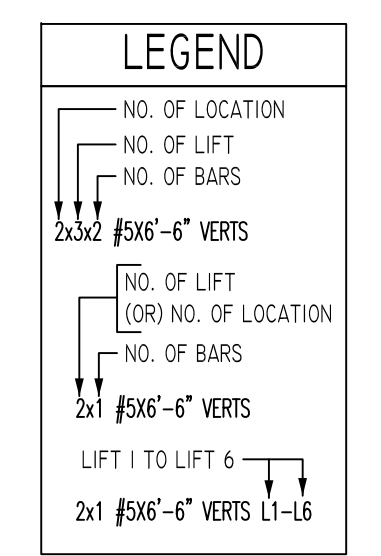
BAR#	LENGTHS	
	TOP	OTHERS
#3	2'-4"	1'-10"
#4	3'-1"	2'-5"
#5	3'-11"	3'-0"
#6	4'-8"	3'-7"
#7	6'-9"	5'-3"
#8	7'-9"	6'-0"
#9	8'-9"	6'-9"
#10	9'-10"	7'-7"
#11	10'-11"	8'-5"

A/E PLEASE VERIFY THE LAP SCHEDULE

**TYPICAL REINFORCING BAR CLEARANCE TABLE**

LOCATION	MIN. COVER
CMU WALL TOP & SIDES	2" CLR

**ALL BARS IN THIS DRAWING  
 ASTM A615 GRADE 60  
 BLACK UNCOATED**



- PLACING PLAN NOTES**
1. THIS DRAWINGS FOR REBAR PLACEMENT ASSISTANCE ONLY, REFER TO STRUCTURAL DETAILS FOR CONTRACT REQUIREMENTS
  2. SECTIONS/DETAILS/DIMENSIONS ON PLACING PLAN ARE FOR REFERENCE AND ARE TO BE USED IN CONJUNCTION WITH CONTRACT DRAWING FOR CRSI MANUAL OF STANDARD PRACTICE
  3. REINFORCING STEEL IS DETAILED PER CONTRACT DOCUMENTS ONLY AS SHOWN CODE COMPLIANCE REQUIREMENTS ARE THE RESPONSIBILITY OF ENGINEER AND/OR CONTRACTOR
  4. THE CONTRACTOR UNDERSTANDS THAT THE ENGINEER SHOULD ALWAYS VERIFY SHOP DRAWINGS IF TIME DOES NOT ALLOW FOR APPROVALS, TEXAS REBAR IS NOT HELD RESPONSIBLE FOR UNAPPROVED SHOP DRAWINGS USED IN PLACING CRSI MANUAL OF STANDARD PRACTICE THE CUSTOMER AND ENGINEER SHOULD REVIEW SHOP DRAWINGS PRIOR TO INSTALLATION TO VERIFY ACCURACY TO STRUCTURAL DRAWINGS.
- PLACING PLAN NOTES**
1. DIMENSIONS ELEVATIONS & DRAWINGS SCALES SHOWN ARE FOR REFERENCE ONLY CONTRACTOR TO PROVIDE LINES, GRADES & TEMPLATES REQUIRED FOR PLACEMENTS
  2. SECTIONS & DETAILS MAY NOT BE SHOWN ON ALL PLACING PLANS. KEEP STRUCTURAL DRAWINGS ON SITE FOR USE
  3. SOME LAP LENGTHS WILL BE ROUNDED UP IN DETAILING TO PROVIDE FOR 1" INCREMENTS FOR LAPS
  4. LAP OR EMBEDMENT LENGTHS SHOWN IN SPECIFIC DETAILS WILL SUPPRESS LAPS IN THE LAP SCHEDULE
  5. VERIFY PLACEMENT DRAWINGS TO LATEST ISSUE OF JOB RECORD DRAWING FOR POSSIBLE REVISIONS OR FIELD CHANGES
  6. TYPICAL NOTES & DETAILS ARE USED THROUGHOUT ENTIRE PROJECT & APPLY UNLESS NOTED OTHERWISE

NO.	REVISION	DATE	DESCRIPTION	NO.	DATE	DESCRIPTION

JOB NAME:	HEB GROCERY #796 ALLEN		
JOB NO:	22131		
DETAILS OF:	AREA - B CMU WALL REINFORCEMENT DETAILS	DATE:	10-27-22
DETAILER:	SSSTR	DRWG:	M06
TEXAS REBAR, LLC 817-487-1672			