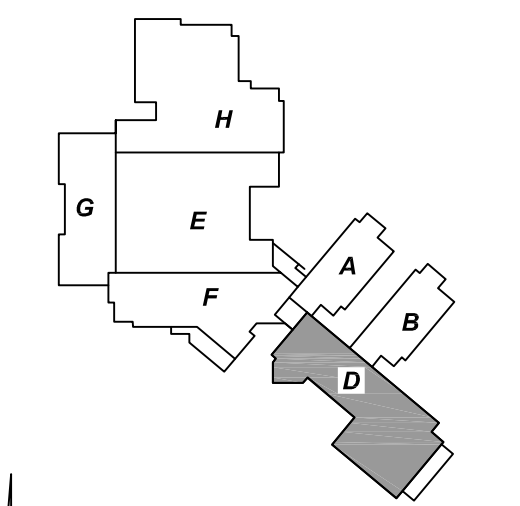


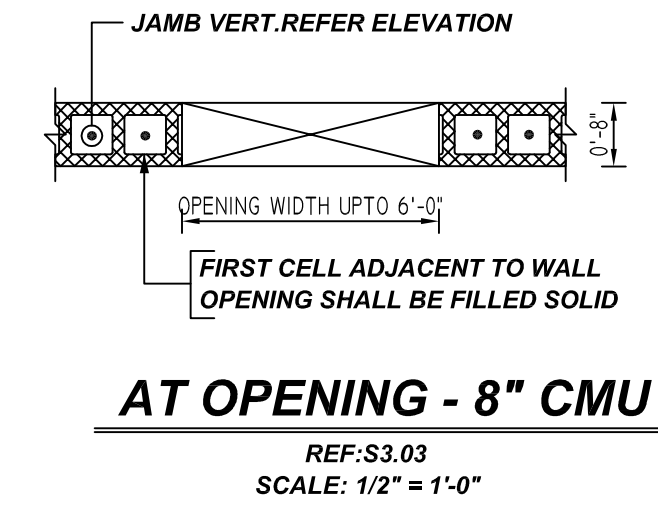
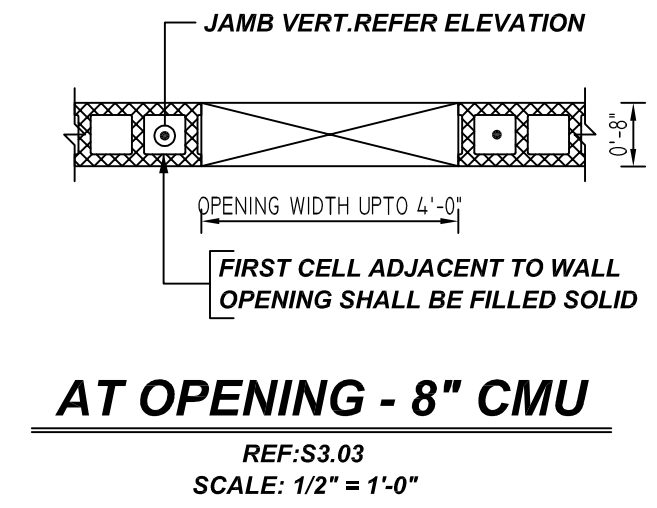
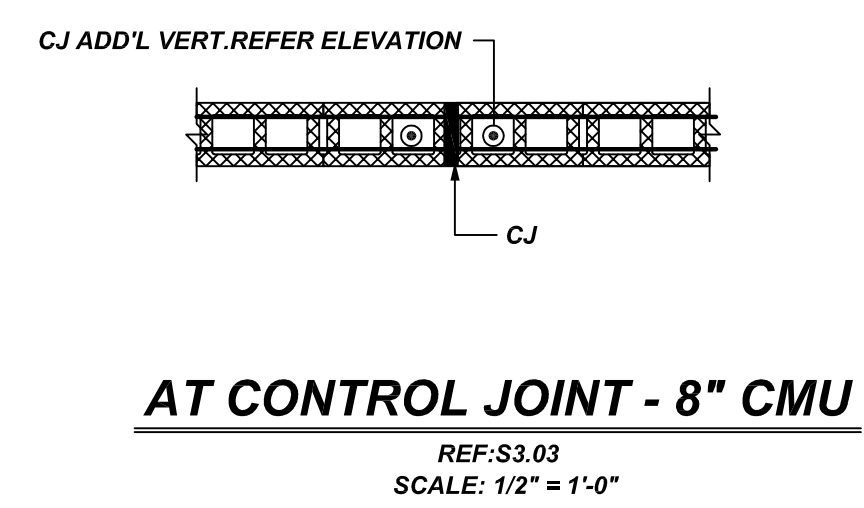
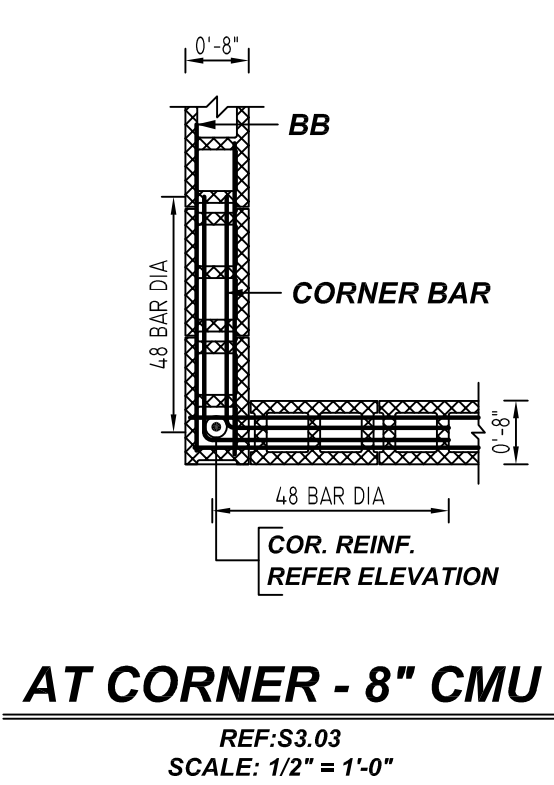
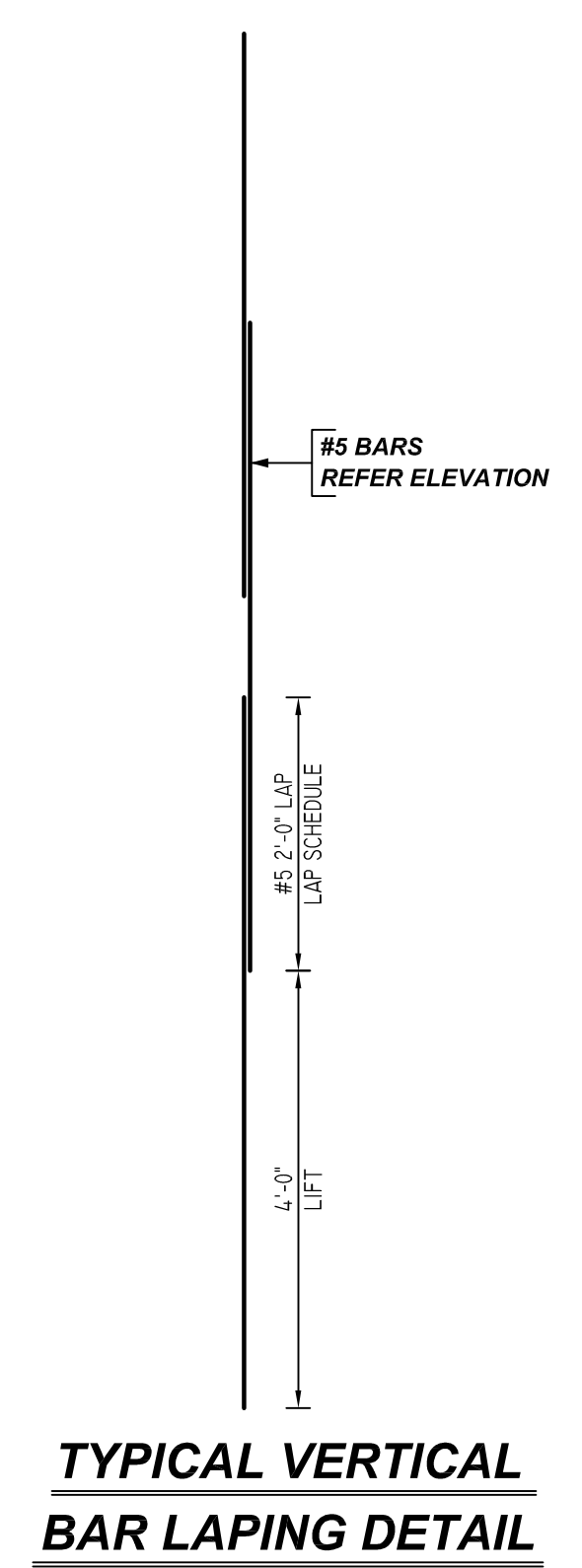
**ALL BARS IN THIS DRAWING
ASTM A615 GRADE 60
BLACK UNCOATED**

LEGEND	
NO. OF LOCATION	NO. OF LIFT
NO. OF BARS	NO. OF BARS
2x3x2 #5x6'-6" VERTS	
NO. OF LIFT (OR) NO. OF LOCATION	NO. OF BARS
2x1 #5x6'-6" VERTS	
LIFT 1 TO LIFT 6	2x1 #5x6'-6" VERTS L1-L6



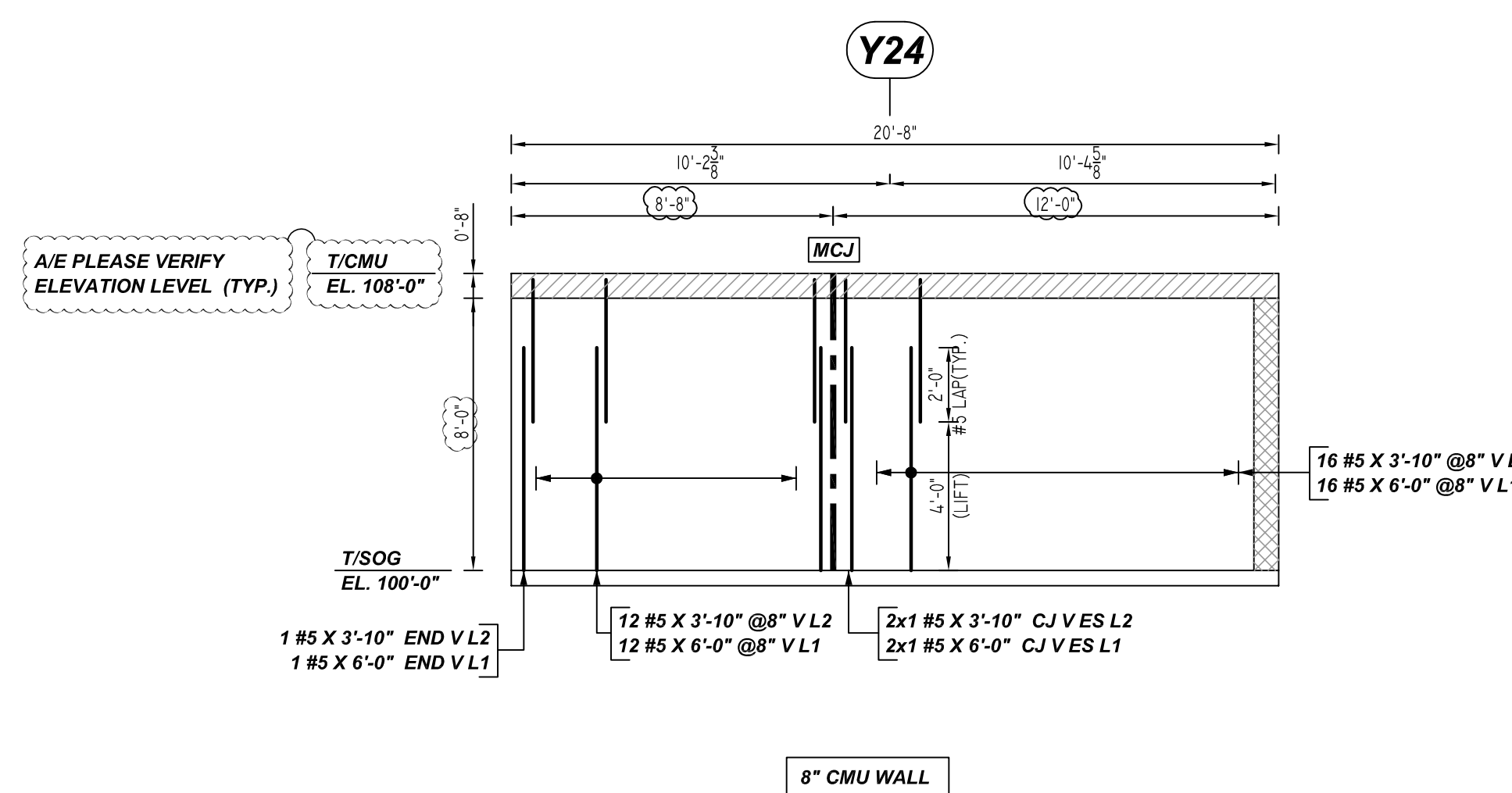
AREA KEY PLAN
REF: 3.23
SCALE: NTS

AREA-D CMU WALL LAYOUT
REF: 3.23
SCALE: 1/10" = 1'-0"

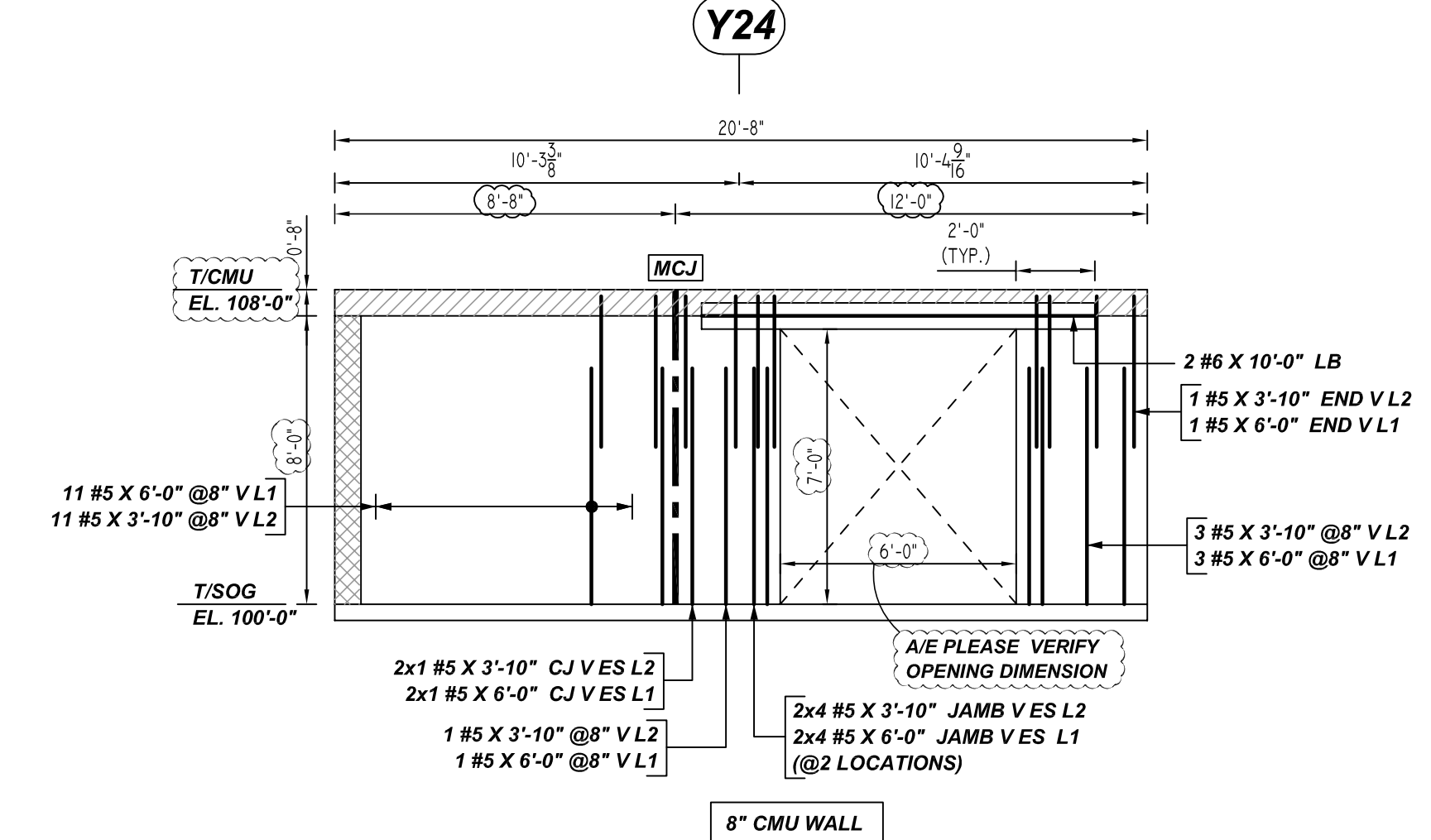


- PLACING PLAN NOTES**
1. THIS DRAWINGS FOR REBAR PLACEMENT ASSISTANCE ONLY. REFER TO STRUCTURAL DETAILS FOR CONTRACT REQUIREMENTS.
 2. SECTIONS / DETAILS / DIMENSIONS ON PLACING PLAN ARE FOR REFERENCE AND ARE TO BE USED IN CONJUNCTION WITH CONTRACT DRAWING FOR CRSI MANUAL OF STANDARD PRACTICE.
 3. REINFORCING STEEL IS DETAILED PER CONTRACT DOCUMENTS ONLY AS SHOWN CODE COMPLIANCE REQUIREMENTS ARE THE RESPONSIBILITY OF ENGINEER AND / OR CONTRACTOR.
 4. THE CONTRACTORS UNDERSTANDS THAT THE ENGINEER SHOULD ALWAYS VERIFY SHOP DRAWINGS IF TIME DOES NOT ALLOW FOR APPROVALS. TEXAS REBAR IS NOT HELD RESPONSIBLE FOR UNAPPROVED SHOP DRAWINGS USED IN PLACING CRSI MANUAL OF STANDARD PRACTICE THE CUSTOMER AND ENGINEER SHOULD REVIEW SHOP DRAWINGS PRIOR TO INSTALLATION TO VERIFY ACCURACY TO STRUCTURAL DRAWINGS.
- PLACING PLAN NOTES**
1. DIMENSIONS ELEVATIONS & DRAWINGS SCALES SHOWN ARE FOR REFERENCE ONLY CONTRACTOR TO PROVIDE LINES, GRADES & TEMPLATES REQUIRED FOR PLACEMENTS.
 2. SECTIONS & DETAILS MAY NOT BE SHOWN ON ALL PLACING PLANS. KEEP STRUCTURAL DRAWINGS ON SITE FOR USE.
 3. SOME LAP LENGTHS WILL BE ROUNDED UP IN DETAILING TO PROVIDE FOR 1" INCREMENTS FOR LAPS.
 4. LAP OR EMBEDMENT LENGTHS SHOWN IN SPECIFIC DETAILS WILL SUPPRESS LAPS IN THE LAP SCHEDULE.
 5. VERIFY PLACEMENT DRAWINGS TO LATEST ISSUE OF JOB RECORD DRAWING FOR POSSIBLE REVISIONS OR FIELD CHANGES.
 6. TYPICAL NOTES & DETAILS ARE USED THROUGHOUT ENTIRE PROJECT & APPLY UNLESS NOTED OTHERWISE.

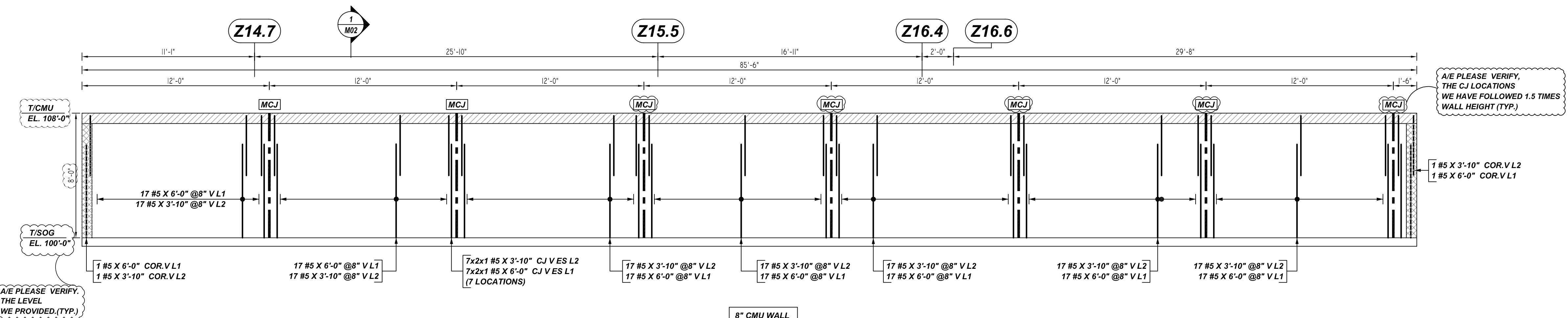
NO.	REVISION	DESCRIPTION	DATE	BY	CHECKED	L1	L2	L3	L4	L5	L6	L7	L8	L9	L10	L11	L12	L13	L14	L15	L16	L17	L18	L19	L20	L21	L22	L23	L24	L25	L26	L27	L28	L29	L30	L31	L32	L33	L34	L35	L36	L37	L38	L39	L40	L41	L42	L43	L44	L45	L46	L47	L48	L49	L50	L51	L52	L53	L54	L55	L56	L57	L58	L59	L60	L61	L62	L63	L64	L65	L66	L67	L68	L69	L70	L71	L72	L73	L74	L75	L76	L77	L78	L79	L80	L81	L82	L83	L84	L85	L86	L87	L88	L89	L90	L91	L92	L93	L94	L95	L96	L97	L98	L99	L100
JOB NAME:		MALAKOFF HIGH SCHOOL																																																																																																							
JOB NO:		22136																																																																																																							
DETAILS OF:		AREA-D CMU WALL REINFORCEMENT DETAILS															DATE: 11-04-22																																																																																								
DETAILER:		SSSTR															DRWG: M01																																																																																								
		TEXAS REBAR, LLC 817-487-1672																																																																																																							



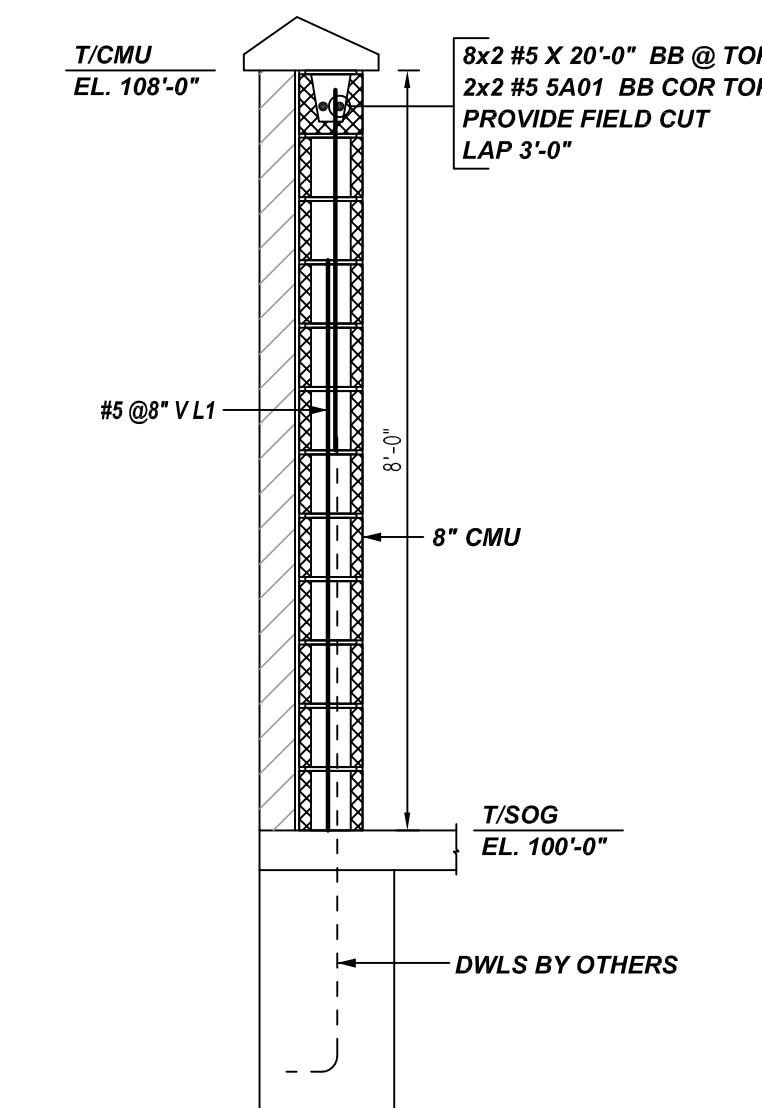
A ELEVATION
 REF: 3.23, 3.03, 3.55 & A4.13
 SCALE: 1/4" = 1'-0"



C ELEVATION
 REF: 3.23, 3.03, 3.55 & A4.13
 SCALE: 1/4" = 1'-0"

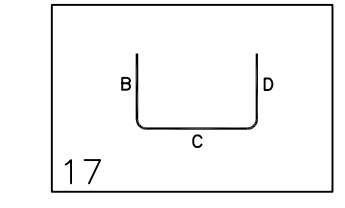


B ELEVATION
 REF: 3.23, 3.03, 3.55 & A4.13
 SCALE: 1/4" = 1'-0"



1 SECTION
 REF: 5/3.55
 SCALE: 1/2" = 1'-0"

Rebar Number	M02	BONDING DETAILS																			
Bar No.	Qty	Size	Total Length	Type	X	Y	Z	V	W	X	Y	Z	V	W	X	Y	Z	V	W		
SA01	4	#5	5'-0"	17																	



LAP SCHEDULE

BAR#	LENGTHS	
	HORIZONTAL	EACH FACE 8" CMU VERTICAL
#4	2'-0"	1'-6"
#5	3'-0"	2'-0"
#6	5'-4"	3'-8"

**ALL BARS IN THIS DRAWING
 ASTM A615 GRADE 60
 BLACK UNCOATED**

LEGEND

NO. OF LOCATION	NO. OF LIFT	NO. OF BARS
2x3x2	#5x6'-6" VERTS	
NO. OF LIFT (OR) NO. OF LOCATION	NO. OF BARS	
2x1	#5x6'-6" VERTS	
LIFT 1 TO LIFT 6	2x1	#5x6'-6" VERTS L1-L6

- PLACING PLAN NOTES**
- THIS DRAWINGS FOR REBAR PLACEMENT ASSISTANCE ONLY. REFER TO STRUCTURAL DETAILS FOR CONTRACT REQUIREMENTS.
 - SECTIONS & DETAILS DIMENSIONS ON PLACING PLAN ARE FOR REFERENCE AND ARE TO BE USED IN CONJUNCTION WITH CONTRACT DRAWING FOR CRSI MANUAL OF STANDARD PRACTICE.
 - REINFORCING STEEL IS DETAILED PER CONTRACT DOCUMENTS ONLY AS SHOWN. CODE COMPLIANCE REQUIREMENTS ARE THE RESPONSIBILITY OF ENGINEER AND/OR CONTRACTOR.
 - THE CONTRACTOR UNDERSTANDS THAT THE ENGINEER SHOULD ALWAYS VERIFY SHOP DRAWINGS IF TIME DOES NOT ALLOW FOR APPROVALS. TEXAS REBAR IS NOT HELD RESPONSIBLE FOR UNAPPROVED SHOP DRAWINGS USED IN PLACING CRSI MANUAL OF STANDARD PRACTICE. THE CUSTOMER AND ENGINEER SHOULD REVIEW SHOP DRAWINGS PRIOR TO INSTALLATION TO VERIFY ACCURACY TO STRUCTURAL DRAWINGS.
- PLACING PLAN NOTES**
- DIMENSIONS ELEVATIONS & DRAWINGS GRADES SHOWN ARE FOR REFERENCE ONLY. CONTRACTOR TO PROVIDE LINES, GRADES & TEMPLATES REQUIRED FOR PLACEMENTS.
 - SECTIONS & DETAILS MAY NOT BE SHOWN ON ALL PLACING PLANS. KEEP STRUCTURAL DRAWINGS ON SITE FOR USE.
 - SOME LAP LENGTHS WILL BE ROUNDED UP IN DETAILING TO PROVIDE FOR 1" INCREMENTS FOR LAPS.
 - LAP OR EMBEDMENT LENGTHS SHOWN IN SPECIFIC DETAILS WILL SUPPRESS LAPS IN THE LAP SCHEDULE.
 - VERIFY PLACEMENT DRAWINGS TO LATEST ISSUE OF JOB RECORD DRAWING FOR POSSIBLE REVISIONS OR FIELD CHANGES.
 - TYPICAL NOTES & DETAILS ARE USED THROUGHOUT ENTIRE PROJECT & APPLY UNLESS NOTED OTHERWISE.

REVISION	NO.	DATE	DESCRIPTION
	0		FOR APPROVAL
	1		
	2		
	3		
	4		

JOB NAME:	MALAKOFF HIGH SCHOOL
JOB NO:	22136
DETAILS OF:	AREA-D CMU WALL REINFORCEMENT DETAILS
DATE:	11-04-22
DETAILER:	SSSTR
DRWG:	M02
TEXAS REBAR, LLC 817-487-1672	