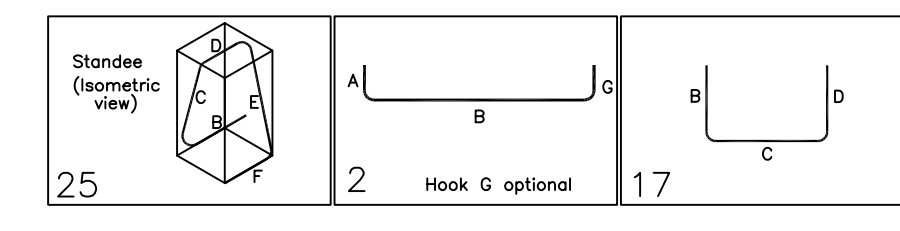


Rebar Schedule: RZ.001

Bar Mark	Qty	Size	Total Length	Type	X'	Y'	Z'	Y'	T'	W'	V'	X'	Y'	Z'
9901	112	#5	6'-7 1/4"	25			1'-6"	1'-4 1/2"	0'-10"	1'-4 1/2"	1'-6"			0'-8 1/2"
9902	214	#9	30'-0"	2	1'-7"	28'-5"								
9903	32	#9	17'-5"	2	1'-7"	15'-10"								
9904	32	#9	20'-7"	2	1'-7"	18'-0"								
9904a	2	#9	25'-11 1/4"	17			1'-7"	24'-4 1/2"						

Notes to:

9904c	2	#9	27'-7 1/4"	17			1'-7"	26'-0 1/2"						
9908	32	#9	18'-1"	2	1'-7"	16'-6"								
9910	1	#9	11'-0"	2	1'-7"	9'-5"								
9912	93	#9	12'-3"	2	1'-7"	10'-8"								
9913	8	#9	8'-4"	2	1'-7"	5'-2"				1'-7"				
9914	1	#9	9'-0"	2	1'-7"	5'-10"				1'-7"				
9915	1	#9	10'-3"	2	1'-7"	7'-1"				1'-7"				
9916	1	#9	11'-7"	2	1'-7"	8'-5"				1'-7"				
9917	1	#9	12'-11"	2	1'-7"	9'-9"				1'-7"				
9922	55	#9	9'-11 1/2"	2	1'-7"	8'-4 1/2"								
9923	48	#9	25'-7"	2	1'-7"	24'-0"								
9924	1	#9	11'-10"	2	1'-7"	10'-5"								
9925	1	#9	12'-4"	2	1'-7"	10'-9"								
9926	4	#9	20'-0"	2	1'-7"	18'-5"								



LAP SCHEDULE
4000 PSI (CLASS-B) CASE - 1
Per ACI 318 (12.2.2)

BAR#	LENGTHS	
	TOP	OTHERS
#3	1'-7"	1'-2"
#4	2'-1"	1'-7"
#5	2'-7"	2'-0"
#6	3'-1"	2'-4"
#7	4'-5"	3'-5"
#8	5'-1"	3'-11"
#9	5'-8"	4'-5"
#10	6'-5"	4'-11"
#11	7'-1"	5'-6"

ALL TOP BARS ARE DEFINED AS HORIZ BARS WITH MORE THAN 12" OF CONCRETE BELOW BARS.

LABEL NOTES:-

- ADD'L = ADDITIONAL
- B1 = BOTTOM FIRST LAYER
- B2 = BOTTOM SECOND LAYER
- T1 = TOP FIRST LAYER
- T2 = TOP SECOND LAYER
- T/SLAB = TOP OF SLAB
- T/CONC = TOP OF CONCRETE
- CLR = CLEAR
- DWL = DWEL
- D/V = DWEL WITH VERTICAL
- TYP. = TYPICAL
- EL = ELEVATION
- FTG = FOOTING
- THK = THICK
- EX. = EXISTING
- ALT. = ALTERNATE

NOTES

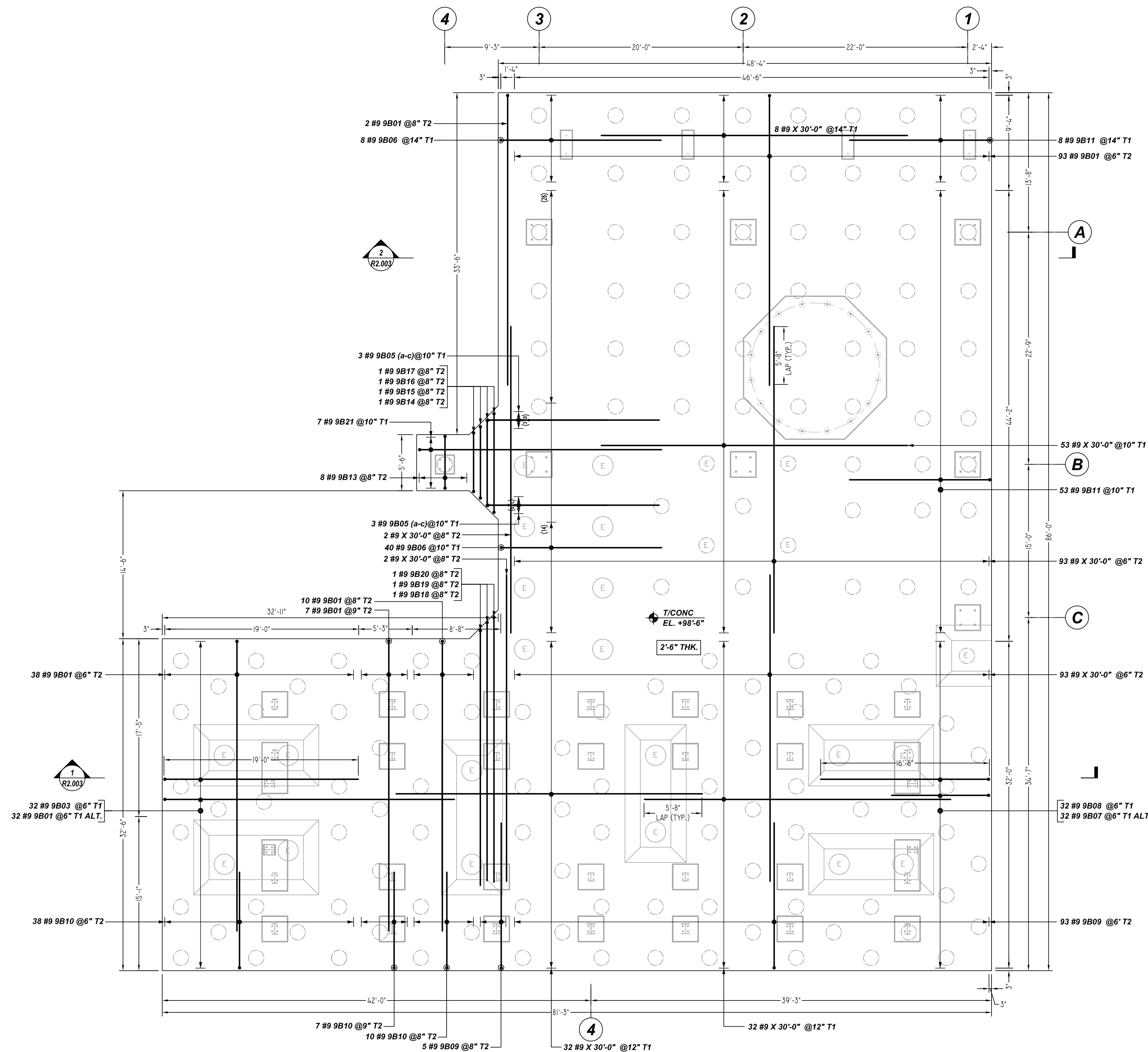
1. TYPICAL CLEARANCES ARE AS FOLLOWS:
FOLLOW MINIMUM COVER IN ACCORDANCE WITH ACI 318 GIVEN BELOW (U.N.O) IN CONTRACT DRAWING
PILE CAP
BOT = 3"
SIDE = 2"
TOP = 2"

**ALL BARS IN THIS DRAWING
ASTM A615 GRADE 60
BLACK UNCOATED**

FURNACE MAT REINFORCEMENT DETAILS(BOTTOM LAYER)
REF: 72-2-0141 & 72-2-0142
SCALE - 1/8"=1'-0"

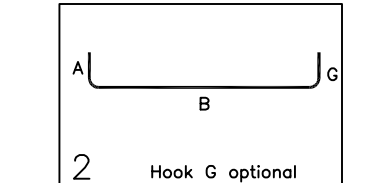
A/E PLEASE VERIFY LAYER ARRANGEMENT AS FOLLOWED

SUBMITTAL RECORD		PROJECT INFORMATION		DRAWING
DATE: 11/23/2022	FOR: APPROVAL	CUSTOMER: CALAN	JOB #: 2378	R2.001
DATE: -	FOR: -	JOB NAME: WESTLAK CHEMICAL	DETAILER: -	
DATE: -	FOR: -	LOCATION: OCEMAR, LA	EMAIL: -	
DATE: -	FOR: -	DESCRIPTION: FURNACE MAT REINFORCEMENT DETAILS(BOTTOM LAYER)	PHONE: -	
DATE: -	FOR: -			



Release Number: R2.002

Bar Mark	Qty	Size	Total Length	Type	X'	Y'	Z'	W'	V'	U'	T'	S'	R'	Q'	P'	O'	N'	M'	L'	K'	J'	I'	H'	G'	F'	E'	D'	C'	B'	A'
9901	18	#9	30'-0"	2	1'-7"	28'-5"																								
9903	32	#9	28'-7"	2	1'-7"	19'-0"																								
9906a	2	#9	18'-7"	2	1'-7"	17'-0"																								
Notes To																														
9906c	2	#9	19'-5"	2	1'-7"	17'-10"																								
9906	48	#9	17'-4"	2	1'-7"	15'-9"																								
9907	32	#9	11'-1 1/2"	2	1'-7"	9'-9 1/2"																								
9908	32	#9	18'-1"	2	1'-7"	16'-6"																								
9909	48	#9	15'-10"	2	1'-7"	14'-3"																								
9910	52	#9	11'-0"	2	1'-7"	9'-5"																								
9911	64	#9	15'-4 1/2"	2	1'-7"	13'-9 1/2"																								
9913	8	#9	8'-4"	2	1'-7"	5'-2"																								
9914	1	#9	9'-0"	2	1'-7"	5'-10"																								
9915	1	#9	10'-3"	2	1'-7"	7'-1"																								
9916	1	#9	11'-7"	2	1'-7"	8'-5"																								
9917	1	#9	12'-11"	2	1'-7"	9'-9"																								
9918	1	#9	26'-7"	2	1'-7"	25'-0"																								
9919	1	#9	28'-11"	2	1'-7"	28'-4"																								
9920	1	#9	27'-7"	2	1'-7"	26'-0"																								
9921	7	#9	25'-4"	2	1'-7"	23'-9"																								



LAP SCHEDULE

4000 PSI (CLASS-B) CASE - 1
Per ACI 318 (12.2.2)

BAR#	LENGTHS	
	TOP	OTHERS
#3	1'-7"	1'-2"
#4	2'-1"	1'-7"
#5	2'-7"	2'-0"
#6	3'-1"	2'-4"
#7	4'-5"	3'-5"
#8	5'-1"	3'-11"
#9	5'-8"	4'-5"
#10	6'-5"	4'-11"
#11	7'-1"	5'-6"

ALL TOP BARS ARE DEFINED AS HORIZ BARS WITH MORE THAN 12" OF CONCRETE BELOW BARS.

LABEL NOTES:-

- ADD'L = ADDITIONAL
- B1 = BOTTOM FIRST LAYER
- B2 = BOTTOM SECOND LAYER
- T1 = TOP FIRST LAYER
- T2 = TOP SECOND LAYER
- T/SLAB = TOP OF SLAB
- T/CONC = TOP OF CONCRETE
- CLR = CLEAR
- DWL = DOWEL
- D/V = DOWEL WITH VERTICAL
- TYP. = TYPICAL
- EL = ELEVATION
- FTG = FOOTING
- THK = THICK
- EX = EXISTING
- ALT. = ALTERNATE

NOTES

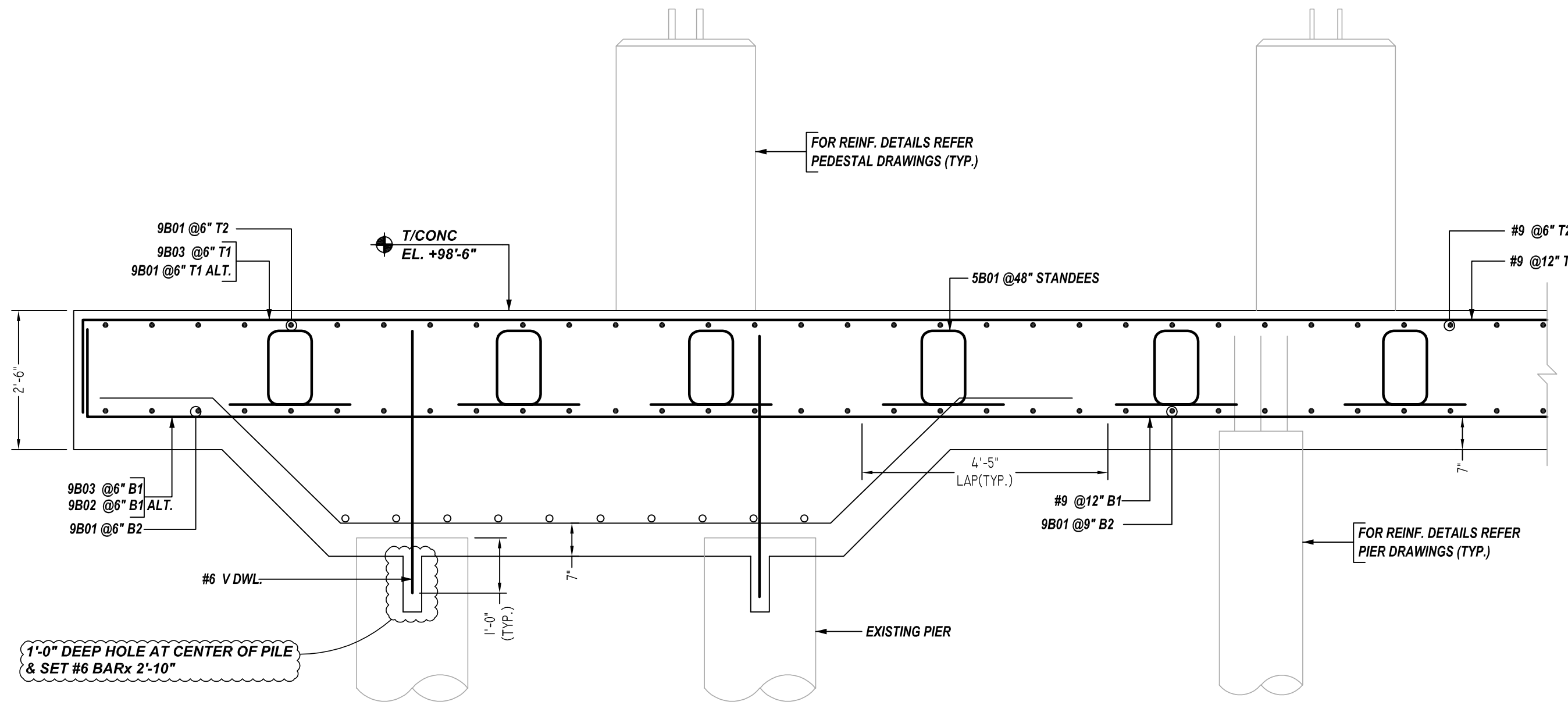
1. TYPICAL CLEARANCES ARE AS FOLLOWS:
FOLLOW MINIMUM COVER IN ACCORDANCE WITH ACI 318 GIVEN BELOW (U.N.O) IN CONTRACT DRAWING
PILE CAP
BOT = 3"
SIDE = 2"
TOP = 2"

**ALL BARS IN THIS DRAWING
ASTM A615 GRADE 60
BLACK UNCOATED**

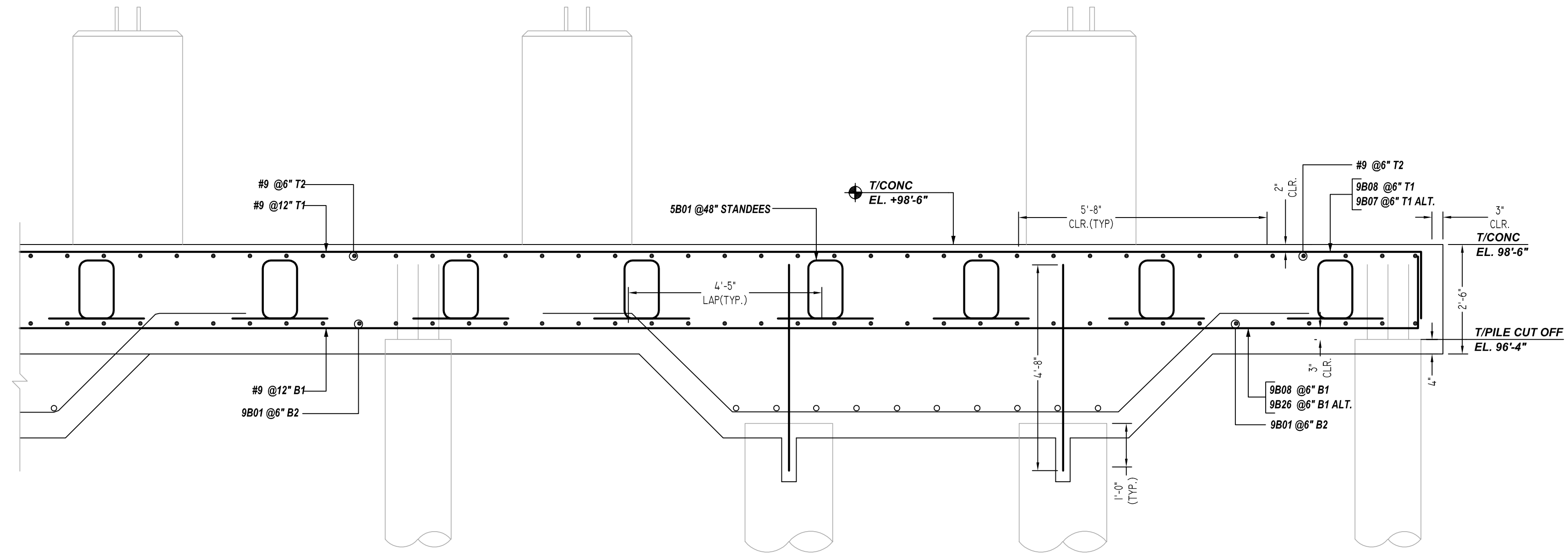
FURNACE MAT REINFORCEMENT DETAILS(TOP LAYER)
REF:72-2-0141 & 72-2-0142
SCALE - 1/8"=1'-0"

A/E PLEASE VERIFY
LAYER ARRANGEMENT AS FOLLOVED

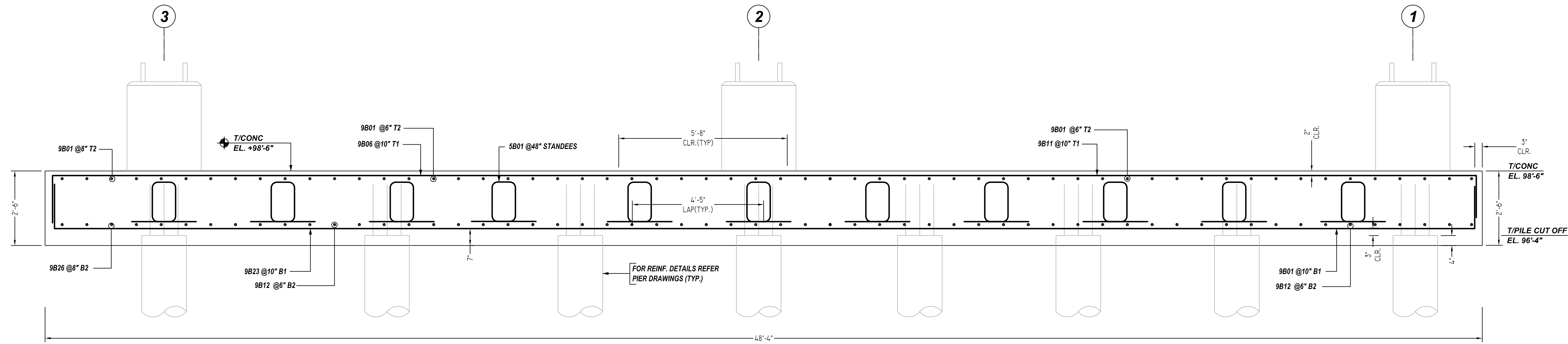
SUBMITTAL RECORD		PROJECT INFORMATION		DRAWING
DATE: 11/23/2022	FOR: APPROVAL	CUSTOMER: CAJAN	JOB #: 2318	R2.002
DATE:	FOR:	JOB NAME: WESTLAKE CHEMICAL	DETAILER:	
DATE: -	FOR:	LOCATION: GEORGE, LA	EMAIL:	
DATE:	FOR:	DESCRIPTION:	PHONE:	
DATE:	FOR:	DESCRIPTION: FURNACE MAT REINFORCEMENT DETAILS(TOP LAYER)		



1 SECTION
R2.001 REF:72-2-0143
SCALE - 1/2"=1'-0"



2 SECTION
R2.001 REF:72-2-0143
SCALE - 1/2"=1'-0"



LABEL NOTES:-

- ADD'L = ADDITIONAL
- B1 = BOTTOM FIRST LAYER
- B2 = BOTTOM SECOND LAYER
- T1 = TOP FIRST LAYER
- T2 = TOP SECOND LAYER
- T/SLAB = TOP OF SLAB
- T/CONC = TOP OF CONCRETE
- CLR = CLEAR
- DWL = DOWEL
- D/V = DOWEL WITH VERTICAL
- TYP. = TYPICAL
- EL = ELEVATION
- FTG = FOOTING
- THK = THICK
- EX. = EXISTING
- ALT. = ALTERNATE

NOTES

1. TYPICAL CLEARANCES ARE AS FOLLOWS:
FOLLOW MINIMUM COVER IN ACCORDANCE WITH
ACI 318 GIVEN BELOW (U.N.O) IN CONTRACT DRAWING
PILE CAP
BOT = 3"
SIDE = 2"
TOP = 2"

LAP SCHEDULE

4000 PSI (CLASS-B) CASE - 1
Per ACI 318 (12.2.2)

BAR#	LENGTHS	
	TOP	OTHERS
#3	1'-7"	1'-2"
#4	2'-1"	1'-7"
#5	2'-7"	2'-0"
#6	3'-1"	2'-4"
#7	4'-5"	3'-5"
#8	5'-1"	3'-11"
#9	5'-8"	4'-5"
#10	6'-5"	4'-11"
#11	7'-1"	5'-6"

ALL TOP BARS ARE DEFINED AS
HORIZ BARS WITH MORE THAN
12" OF CONCRETE BELOW BARS.

**ALL BARS IN THIS DRAWING
ASTM A615 GRADE 60
BLACK UNCOATED**

SUBMITTAL RECORD		PROJECT INFORMATION		DRAWING
DATE: 11/23/2022	FOR: APPROVAL	CUSTOMER: CALUM	JOB #: 2378	R2.003
DATE: -	FOR: -	JOB NAME: WESTLAKE CHEMICAL	DETAILER: -	
DATE: -	FOR: -	LOCATION: OCEANAR, LA	EMAIL: -	
DATE: -	FOR: -	DESCRIPTION: FURNACE MAT REINFORCEMENT DETAILS	PHONE: -	
DATE: -	FOR: -			