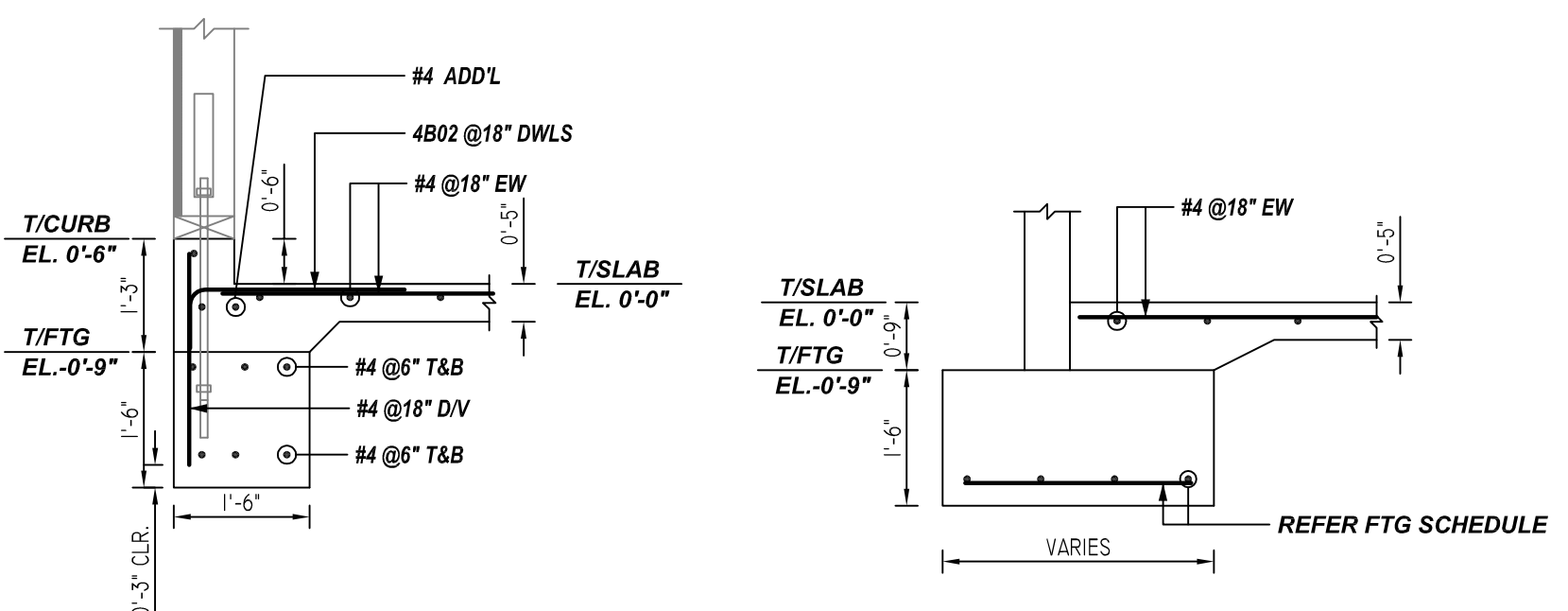
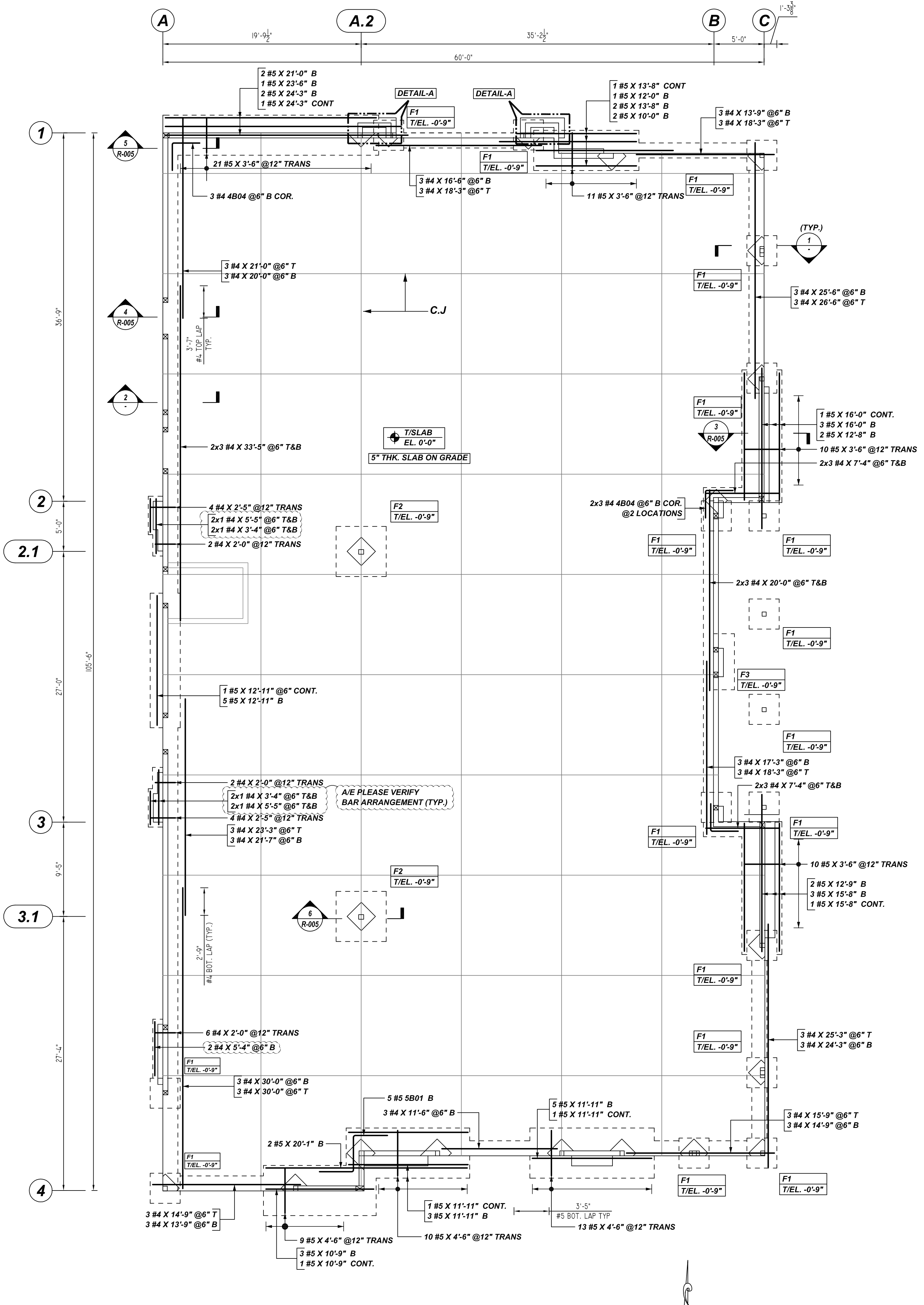
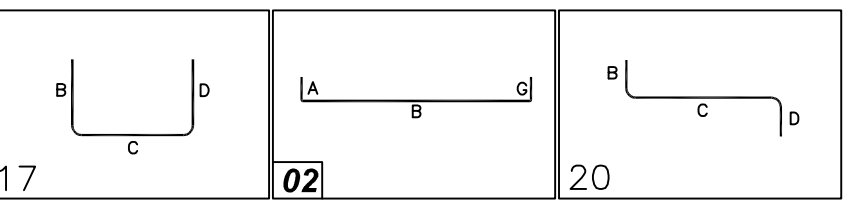


MARK	QTY	SIZE	GRID LOCATION	REINFORCING	REMARK
F1	17	3'-0" x 3'-0" x 1'-6"	SEE PLAN	17x2x4 #5 X 2'-6" EW B	REFER SECTION - 1
F2	2	5'-0" x 5'-0" x 1'-6"	SEE PLAN	2x2x6 #5 X 4'-6" EW B	REFER SECTION - 1
F3	1	5'-7" x 3'-0" x 1'-6"	SEE PLAN	4 #5 X 5'-1" CONT. B 6 #5 X 2'-6" @12" TRANS B	REFER SECTION - 1

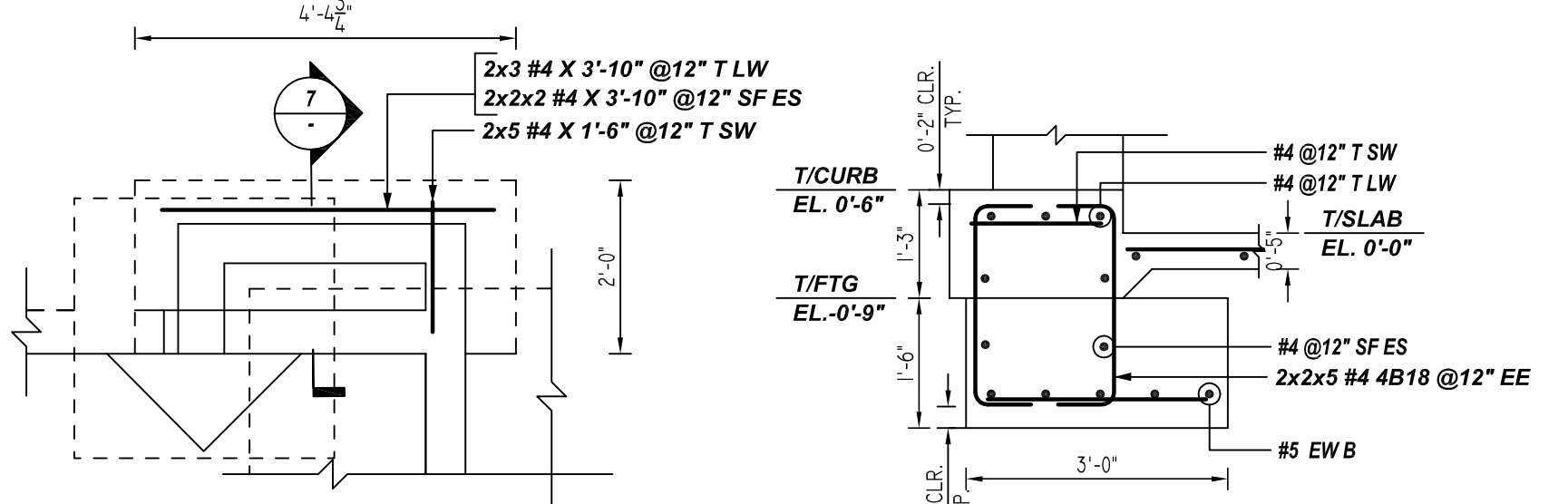
A/E PLEASE VERIFY FOOTING LENGTH

Release Number: R-004	By	Rev	Qty	Size	Total Length	Type	X	Y	Z	BENDING DETAILS
4804	#	#	17	3'-0"	5'-6"	17		2'-6"	2'-6"	
4818	#	#	20	3'-6"	0'-8"	20		2'-4"	2'-4"	
5801	#	#	3	10'-6"	20	3		3'-5"	3'-5"	



**SECTION 2**  
REF: S4.1 (DT.04/28/22)  
SCALE: 1/2" = 1'-0"

**SECTION 1**  
REF: S2.1 (DT.04/28/22)  
SCALE: 1/2" = 1'-0"



**DETAIL-A**  
REF: S2.1 (DT.04/28/22)  
SCALE: 1/2" = 1'-0"  
(@ 2 LOCATIONS)

**SECTION 7**  
REF: S4.2 (DT.04/28/22)  
SCALE: 1/2" = 1'-0"

**SHOP-2 FOUNDATION REINFORCEMENT DETAILS**  
REF: S2.1 (DT.04/28/22)  
SCALE: 1/8" = 1'-0"

**LAP SCHEDULE**  
3000 PSI (CLASS-B) CASE - 1  
Per ACI 318 (12.2.2)

BAR#	LENGTHS	
	TOP	OTHERS
#3	2'-8"	2'-0"
#4	3'-7"	2'-9"
#5	4'-6"	3'-5"
#6	5'-5"	4'-2"

**ALL BARS IN THIS DRAWING**  
ASTM A615 GRADE 60  
BLACK UNCOATED

ALL TOP BARS ARE DEFINED AS HORIZ BARS WITH MORE THAN 12" OF CONCRETE BELOW BARS.

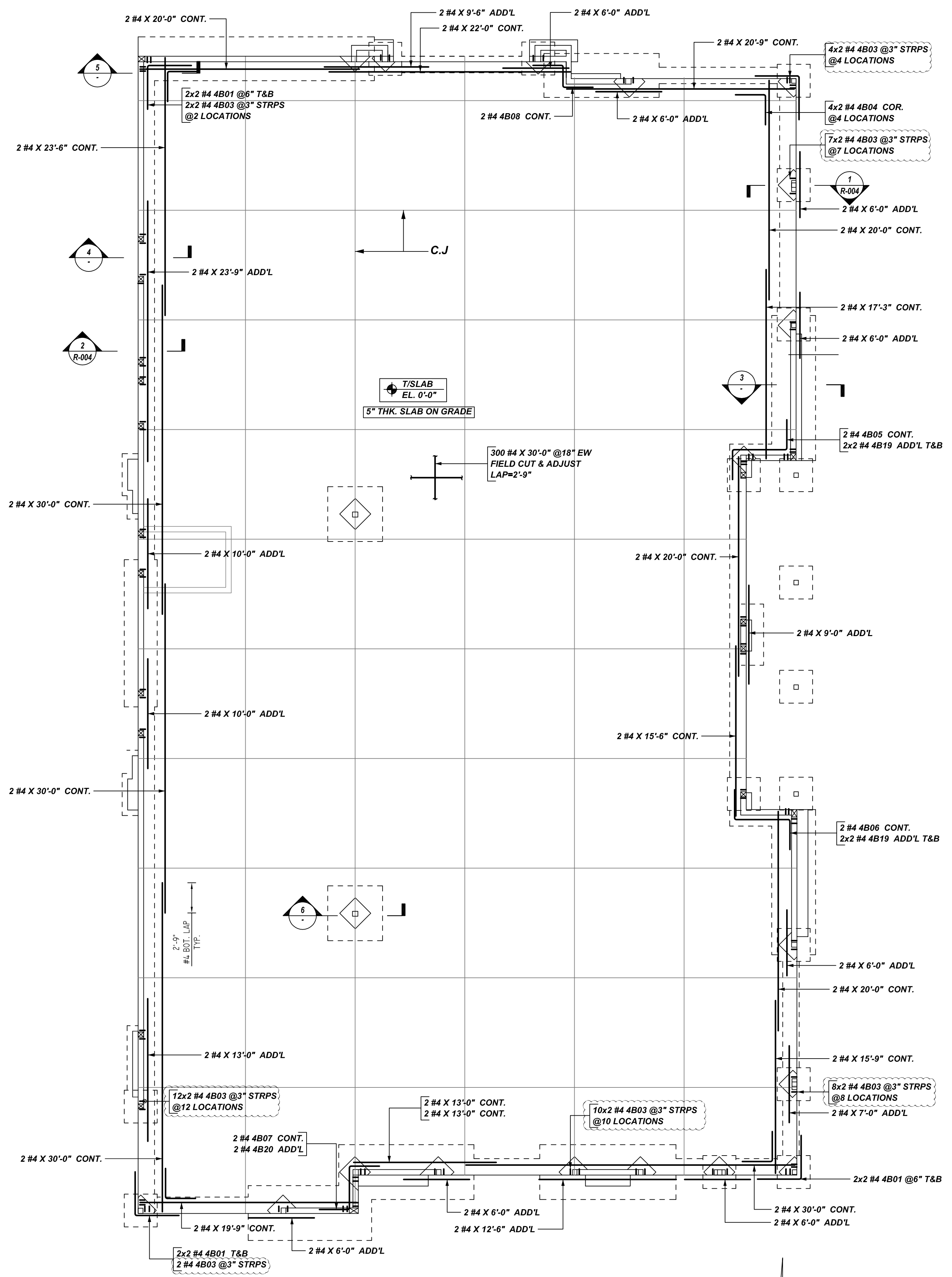
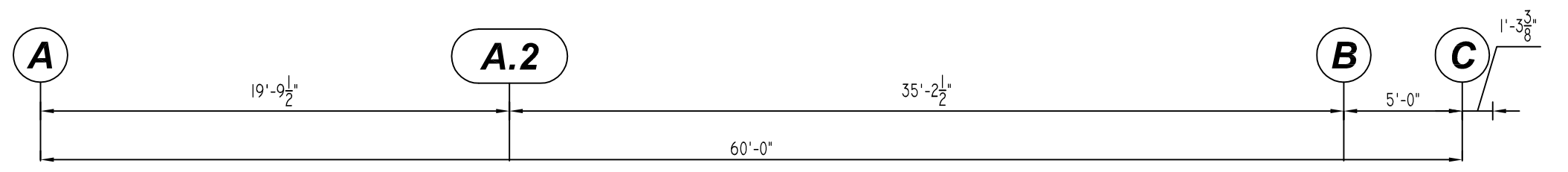
- PLACING PLAN NOTES:
- THIS DRAWING IS FOR REBAR PLACEMENT ASSISTANCE ONLY; REFER TO STRUCTURAL DETAILS FOR CONTRACT REQUIREMENTS.
  - SECTIONS/DETAILS/DIMENSIONS ON PLACING PLAN ARE FOR REFERENCE ONLY AND ARE TO BE USED IN CONJUNCTION WITH CONTRACT DRAWINGS PER CRSI MANUAL OF STANDARD PRACTICE.
  - REINFORCING STEEL IS DETAILED PER CONTRACT DOCUMENTS ONLY AS SHOWN. CODE COMPLIANCE REQUIREMENTS ARE THE RESPONSIBILITY OF ENGINEER AND/OR CONTRACTOR.
  - THE CONTRACTOR(S) UNDERSTANDS THAT THE ENGINEER SHOULD ALWAYS VERIFY SHOP DRAWINGS. IF TIME DOES NOT ALLOW FOR APPROVALS, P.T.S IS NOT HELD RESPONSIBLE FOR UNAPPROVED SHOP DRAWINGS USED IN PLACING (CRSI MANUAL OF STANDARD PRACTICE). THE CUSTOMER AND ENGINEER SHOULD REVIEW SHOP DRAWINGS PRIOR TO INSTALLATION TO VERIFY ACCURACY TO STRUCTURAL DRAWINGS.
- PLACING NOTES:
- DIMENSIONS, ELEVATIONS & DRAWING SCALES SHOWN ARE FOR REFERENCE ONLY. CONTRACTOR TO PROVIDE LINES, GRADES & TEMPLATES REQUIRED FOR PLACEMENT.
  - SECTIONS & DETAILS MAY NOT BE SHOWN ON ALL PLACING PLANS. KEEP STRUCTURAL DRAWINGS ON SITE FOR USE.
  - SOME LAP LENGTHS WILL BE ROUNDED UP IN DETAILING TO PROVIDE FOR 1" INCREMENTS FOR LAPS.
  - LAPS OR EMBEDMENT LENGTHS SHOWN IN SPECIFIC DETAILS WILL SUPERSEDE LAPS IN THE LAP SCHEDULE.
  - MILL CERTIFICATIONS ARE REQUIRED FOR ALL SHIPMENTS. IF BARS CANNOT BE IDENTIFIED, SPECIAL TESTING MAY BE DONE WITH SAMPLES CUT FROM SHIPMENT.
  - VERIFY PLACEMENT DRAWINGS TO LATEST ISSUE OF JOB RECORD DRAWINGS FOR POSSIBLE REVISIONS OR FIELD CHANGES.
  - TYPICAL NOTES & DETAILS ARE USED THROUGHOUT ENTIRE PROJECT & APPLY UNLESS NOTED OTHERWISE.

DATE: 06/29/2022

DRAWING STATUS FOR APPROVAL: REVISED & RE-SUBMITTED

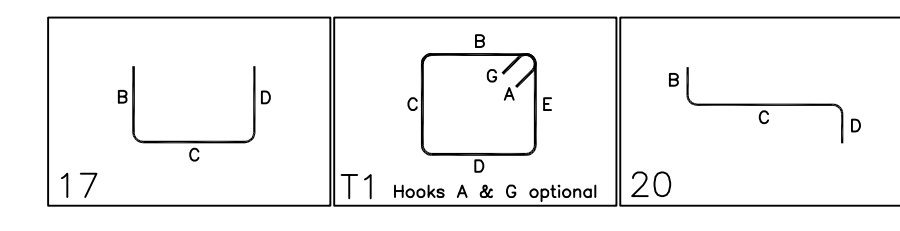
REVISION FOR CONSTRUCTION PER CUSTOMER'S REQUEST

TITLE: SHOP-2 FOUNDATION REINFORCEMENT DETAILS  
PROJECT: THE SHOPS AT FOLSOM RANCH  
LOCATION: 3230 EAST BIDWELL STREET, FOLSOM, CA 95630  
CUSTOMER: -  
DRAWN BY: GBI/MET DATE: 06/29/2022 CHKD BY: MET



Release Number: R-005

Bar Mark	Qty	Size	Total Length	Type	X	Y	Z	W	V	U	T	S	R	Q	P	O	N	M	L	K	J	I	H	G	F	E	D	C	B	A
4B01	12	#4	8'-0"	T1																										
4B03	88	#4	5'-5"	T1																										
4B04	8	#4	5'-6"	T1																										
4B05	2	#4	10'-6"	T0																										
4B06	2	#4	10'-7"	T0																										
4B07	2	#4	9'-6"	T0																										
4B08	2	#4	7'-8"	T0																										
4B19	8	#4	13'-1"	T0																										
4B20	2	#4	12'-0"	T0																										



**LAP SCHEDULE**

3000 PSI (CLASS-B) CASE - 1  
Per ACI 318 (12.2.2)

BAR#	LENGTHS	
	TOP	OTHERS
#3	2'-8"	2'-0"
#4	3'-7"	2'-9"
#5	4'-6"	3'-5"
#6	5'-5"	4'-2"

ALL TOP BARS ARE DEFINED AS HORIZ BARS WITH MORE THAN 12" OF CONCRETE BELOW BARS.

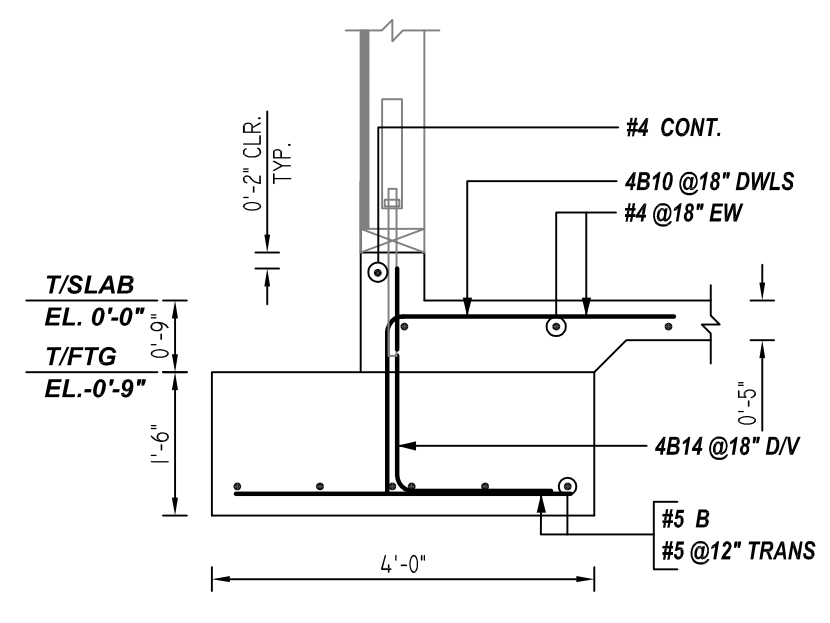
**TYPICAL REINFORCING BAR CLEARANCE TABLE**

LOCATION	MIN. COVER
FOOTING SIDE & BOTTOM	3" CLR
SLAB TOP	2" CLR

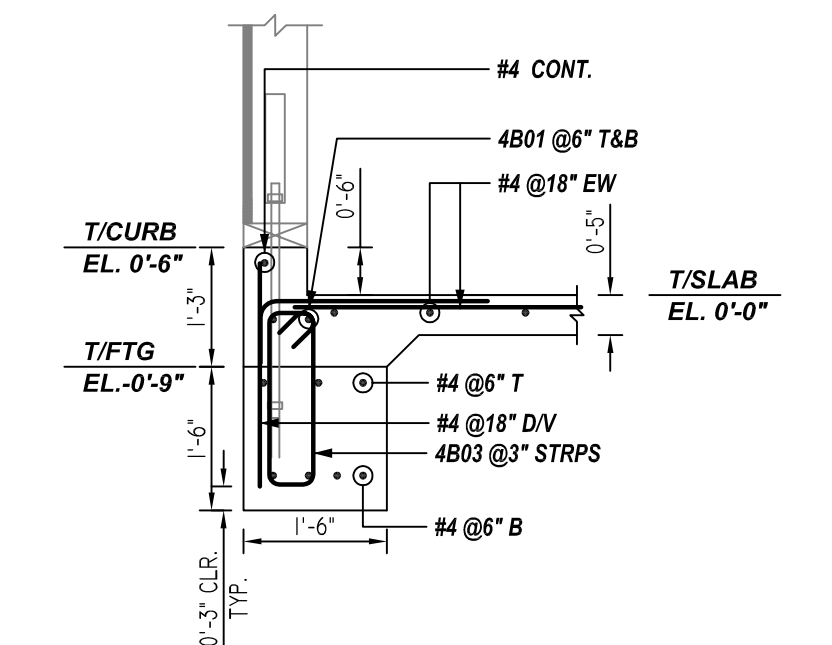
**ALL BARS IN THIS DRAWING  
ASTM A615 GRADE 60  
BLACK UNCOATED**

**ACCESSORIES DETAILS**

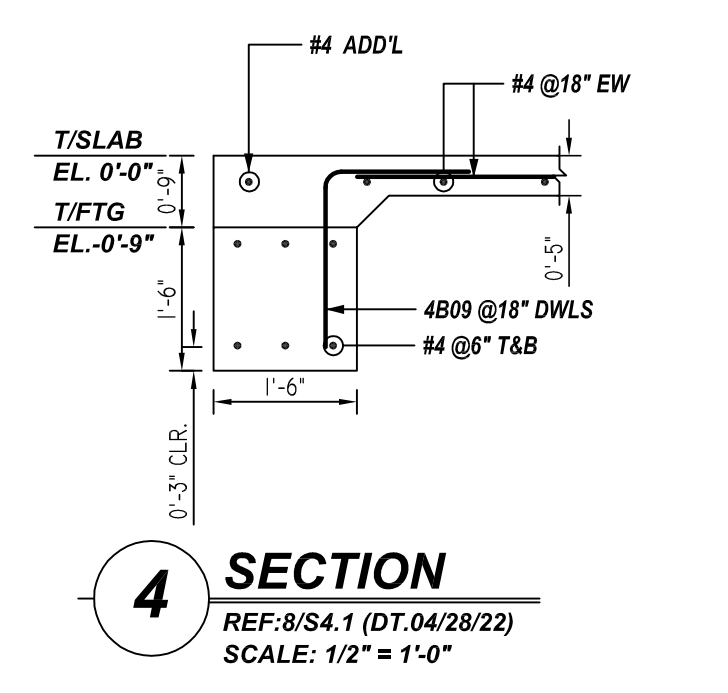
S. NO	ELEMENT	DESCRIPTION	PCS	AREA	REMARK
1	5" THK SOG	2 1/2" HT IHC @ 4'-0" C/C	375	6000 SQ.FT	FOR BAR SUPPORT (@ BOTTOM)



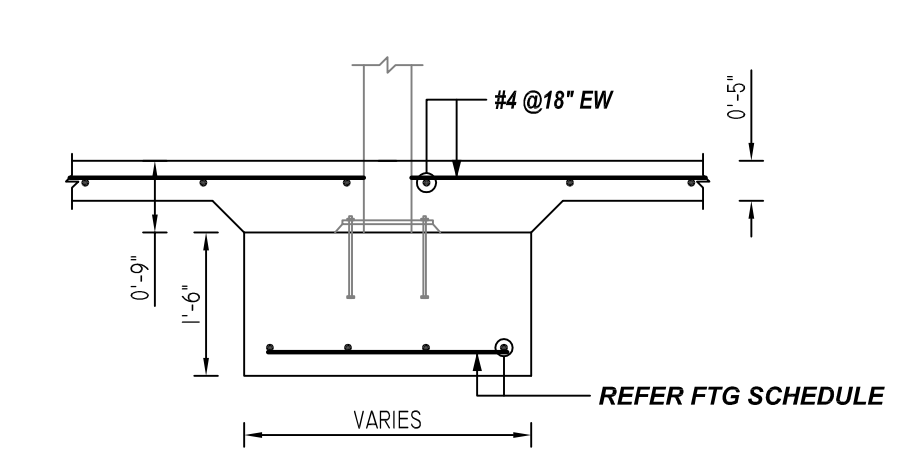
**3 SECTION**  
REF:11/S4.1 (DT.04/28/22)  
SCALE: 1/2" = 1'-0"



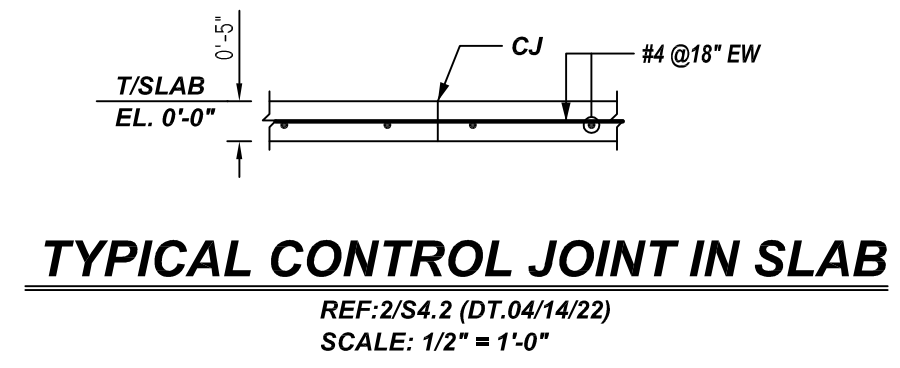
**5 SECTION**  
REF:S4.2 (DT.04/14/22)  
SCALE: 1/2" = 1'-0"



**4 SECTION**  
REF:8/S4.1 (DT.04/28/22)  
SCALE: 1/2" = 1'-0"



**6 SECTION**  
REF:2/S4.2 (DT.04/14/22)  
SCALE: 1/2" = 1'-0"



**TYPICAL CONTROL JOINT IN SLAB**  
REF:2/S4.2 (DT.04/14/22)  
SCALE: 1/2" = 1'-0"

- PLACING PLAN NOTES:**
- THIS DRAWING IS FOR REBAR PLACEMENT ASSISTANCE ONLY; REFER TO STRUCTURAL DETAILS FOR CONTRACT REQUIREMENTS.
  - SECTIONS/DETAILS/DIMENSIONS ON PLACING PLAN ARE FOR REFERENCE ONLY AND ARE TO BE USED IN CONJUNCTION WITH CONTRACT DRAWINGS PER CRSI MANUAL OF STANDARD PRACTICE.
  - REINFORCING STEEL IS DETAILED PER CONTRACT DOCUMENTS ONLY AS SHOWN. CODE COMPLIANCE REQUIREMENTS ARE THE RESPONSIBILITY OF ENGINEER AND/OR CONTRACTOR.
  - THE CONTRACTOR(S) UNDERSTANDS THAT THE ENGINEER SHOULD ALWAYS VERIFY SHOP DRAWINGS, IF TIME DOES NOT ALLOW FOR APPROVALS, P.T.S IS NOT HELD RESPONSIBLE FOR UNAPPROVED SHOP DRAWINGS USED IN PLACING (CRSI MANUAL OF STANDARD PRACTICE). THE CUSTOMER AND ENGINEER SHOULD REVIEW SHOP DRAWINGS PRIOR TO INSTALLATION TO VERIFY ACCURACY TO STRUCTURAL DRAWINGS.
- PLACING NOTES:**
- DIMENSIONS, ELEVATIONS & DRAWING SCALES SHOWN ARE FOR REFERENCE ONLY. CONTRACTOR TO PROVIDE LINES, GRADES & TEMPLATES REQUIRED FOR PLACEMENT.
  - SECTIONS & DETAILS MAY NOT BE SHOWN ON ALL PLACING PLANS. KEEP STRUCTURAL DRAWINGS ON SITE FOR USE.
  - SOME LAP LENGTHS WILL BE ROUNDED UP IN DETAILING TO PROVIDE FOR 1" INCREMENTS FOR LAPS.
  - LAPS OR EMBEDMENT LENGTHS SHOWN IN SPECIFIC DETAILS WILL SUPERSEDE LAPS IN THE LAP SCHEDULE.
  - MILL CERTIFICATIONS ARE REQUIRED FOR ALL SHIPMENTS. IF BARS CANNOT BE IDENTIFIED, SPECIAL TESTING MAY BE DONE WITH SAMPLES CUT FROM SHIPMENT.
  - VERIFY PLACEMENT DRAWINGS TO LATEST ISSUE OF JOB RECORD DRAWINGS FOR POSSIBLE REVISIONS OR FIELD CHANGES.
  - TYPICAL NOTES & DETAILS ARE USED THROUGHOUT ENTIRE PROJECT & APPLY UNLESS NOTED OTHERWISE.

**SHOP-2 SLAB ON GRADE REINFORCEMENT DETAILS**

REF:S2.1 (DT.04/28/22)  
SCALE: 1/8" = 1'-0"

A/E PLEASE VERIFY  
PROFILE & BAR ARRANGEMENT

REBAR GRADE  
ASTM A615 GRADE 60  
PRE-FIX: B

DATE	DRAWING STATUS
06/29/2022	FOR APPROVAL
	REVISED & RE-SUBMITTED
	REVISION
	FOR CONSTRUCTION
	PER CUSTOMER'S REQUEST

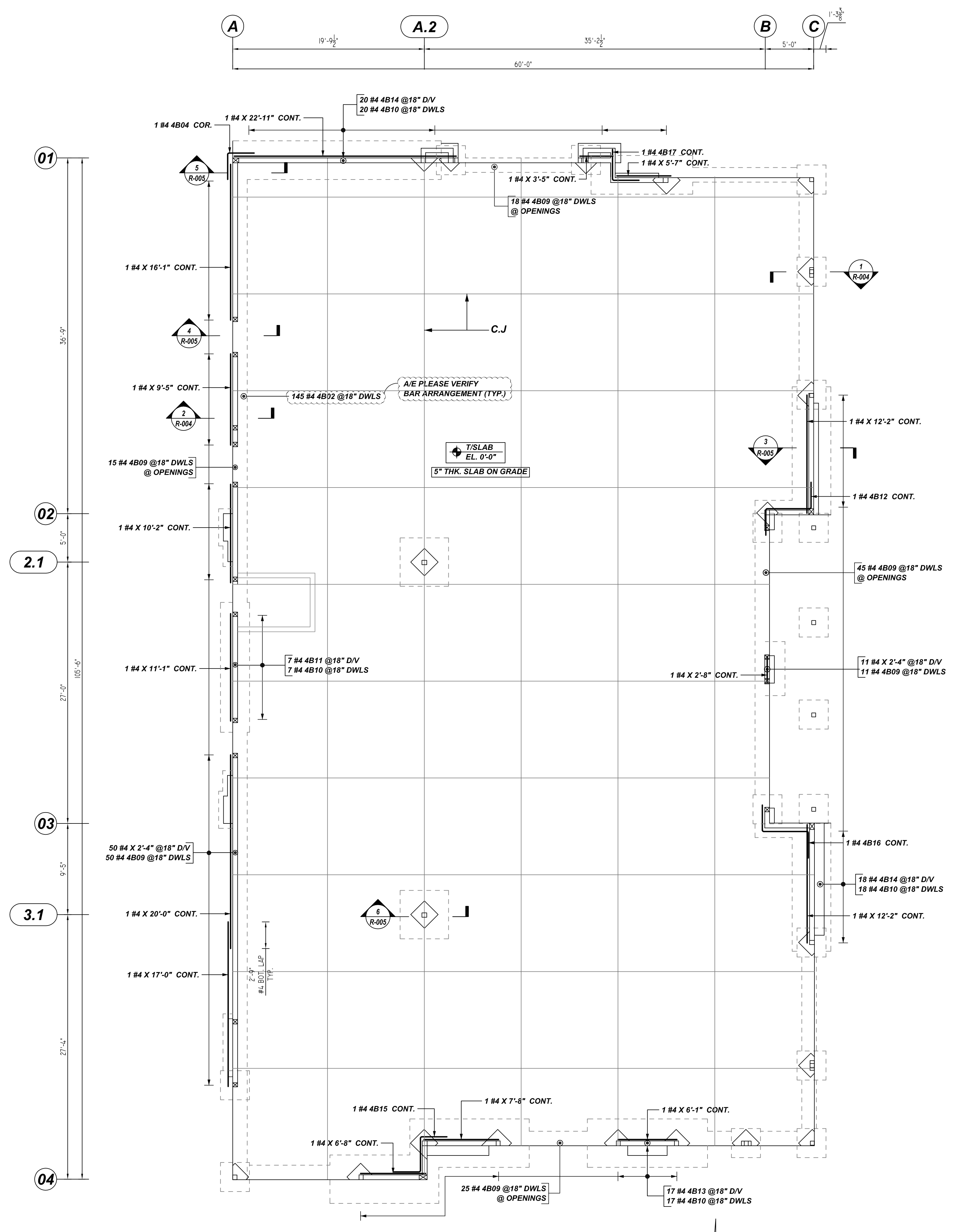
TITLE: SHOP-2 SLAB ON GRADE REINFORCEMENT DETAILS  
PROJECT: THE SHOPS AT FOLSOM RANCH  
LOCATION: 3230 EAST BIDWELL STREET, FOLSOM, CA 95630  
CUSTOMER: -  
DRAWN BY: GBI/MET DATE: 06/29/2022 CHKD BY: MET

JOB# 77794  
DWG# R-005

DATE	06/29/2022
DRAWING STATUS	FOR APPROVAL
	REVISED & RE-SUBMITTED
	REVISION
	FOR CONSTRUCTION
	PER CUSTOMER'S REQUEST

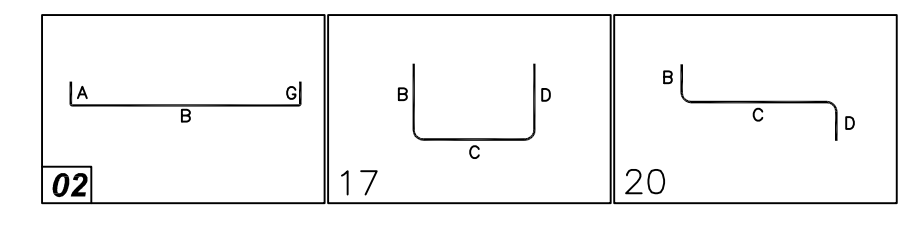
TITLE: SHOP-2 CURB REINFORCEMENT DETAILS	
PROJECT: THE SHOPS AT FOLSOM RANCH	
LOCATION: 3230 EAST BIDWELL STREET, FOLSOM, CA 95630	
CUSTOMER:	
DRAWN BY:	GBI/MET
DATE:	06/29/2022
CHKD BY:	MET

JOB #	77794
DWG #	R-006



Release Number: R-006

Bar Mark	Qty	Size	Total Length	Type	X'	Y'	Z'	W'	V'	U'	T'	S'	R'	Q'	P'
4B02	145	#4	5'-5"	2	0'-8"	2'-9"									
4B04	1	#4	5'-5"	17	2'-9"	2'-9"									
4B09	164	#4	5'-10"	17	1'-4"	2'-4"									
4B10	62	#4	5'-4"	17	3'-0"	2'-4"									
4B11	7	#4	5'-8"	17	2'-3"	1'-3"									
4B12	1	#4	10'-2 1/2"	20	2'-9"	4'-8 1/2"	2'-9"								
4B13	17	#4	4'-8"	17	2'-3"	2'-3"									
4B14	38	#4	4'-8"	17	2'-3"	1'-9"									
4B15	1	#4	9'-2"	20	2'-9"	3'-8"	2'-9"								
4B16	1	#4	10'-3 1/2"	20	2'-9"	4'-9 1/2"	2'-9"								
4B17	1	#4	5'-11 1/2"	17	3'-2 1/2"	2'-9"									



**LAP SCHEDULE**

3000 PSI (CLASS-B) CASE - 1  
Per ACI 318 (12.2.2)

BAR#	LENGTHS	
	TOP	OTHERS
#3	2'-8"	2'-0"
#4	3'-7"	2'-9"
#5	4'-6"	3'-5"
#6	5'-5"	4'-2"

TYPICAL REINFORCING BAR CLEARANCE TABLE

LOCATION	MIN. COVER
FOOTING SIDE & BOTTOM	3" CLR
SLAB TOP	2" CLR

**ALL BARS IN THIS DRAWING  
ASTM A615 GRADE 60  
BLACK UNCOATED**

ALL TOP BARS ARE DEFINED AS  
HORIZ BARS WITH MORE THAN  
12" OF CONCRETE BELOW BARS.

**SHOP-2 CURB REINFORCEMENT DETAILS**

REF: S2.1 (DT.04/28/22)  
SCALE: 1/6" = 1'-0"

- PLACING PLAN NOTES:**
- THIS DRAWING IS FOR REBAR PLACEMENT ASSISTANCE ONLY; REFER TO STRUCTURAL DETAILS FOR CONTRACT REQUIREMENTS.
  - SECTIONS/DETAILS/DIMENSIONS ON PLACING PLAN ARE FOR REFERENCE ONLY AND ARE TO BE USED IN CONJUNCTION WITH CONTRACT DRAWINGS PER CRSI MANUAL OF STANDARD PRACTICE.
  - REINFORCING STEEL IS DETAILED PER CONTRACT DOCUMENTS ONLY AS SHOWN. CODE COMPLIANCE REQUIREMENTS ARE THE RESPONSIBILITY OF ENGINEER AND/OR CONTRACTOR.
  - THE CONTRACTOR(S) UNDERSTANDS THAT THE ENGINEER SHOULD ALWAYS VERIFY SHOP DRAWINGS. IF TIME DOES NOT ALLOW FOR APPROVALS, P/S IS NOT HELD RESPONSIBLE FOR UNAPPROVED SHOP DRAWINGS USED IN PLACING (CRSI MANUAL OF STANDARD PRACTICE). THE CUSTOMER AND ENGINEER SHOULD REVIEW SHOP DRAWINGS PRIOR TO INSTALLATION TO VERIFY ACCURACY TO STRUCTURAL DRAWINGS.
- PLACING NOTES:**
- DIMENSIONS, ELEVATIONS & DRAWING SCALES SHOWN ARE FOR REFERENCE ONLY. CONTRACTOR TO PROVIDE LINES, GRADES & TEMPLATES REQUIRED FOR PLACEMENT.
  - SECTIONS & DETAILS MAY NOT BE SHOWN ON ALL PLACING PLANS. KEEP STRUCTURAL DRAWINGS ON SITE FOR USE.
  - SOME LAP LENGTHS WILL BE ROUNDED UP IN DETAILING TO PROVIDE FOR 1" INCREMENTS FOR LAPS.
  - LAPS OR EMBEDMENT LENGTHS SHOWN IN SPECIFIC DETAILS WILL SUPERSEDE LAPS IN THE LAP SCHEDULE.
  - MILL CERTIFICATIONS ARE REQUIRED FOR ALL SHIPMENTS. IF BARS CANNOT BE IDENTIFIED, SPECIAL TESTING MAY BE DONE WITH SAMPLES CUT FROM SHIPMENT.
  - VERIFY PLACEMENT DRAWINGS TO LATEST ISSUE OF JOB RECORD DRAWINGS FOR POSSIBLE REVISIONS OR FIELD CHANGES.
  - TYPICAL NOTES & DETAILS ARE USED THROUGHOUT ENTIRE PROJECT & APPLY UNLESS NOTED OTHERWISE.

A/E PLEASE VERIFY  
PROFILE & BAR ARRANGEMENT