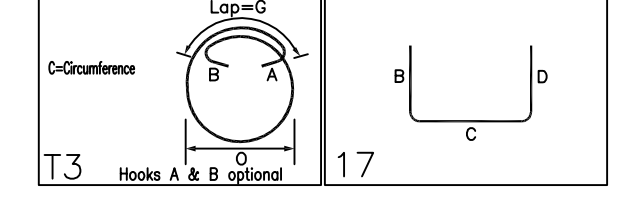


Release Number: R-001

Bar Mark	Qty	Size	Total Length	Type	X	Y	Z	W	V	U	T	S	R	Q	P	O	N	M	L	K	J	I	H	G	F	E	D	C	B	A	
4A04	24	#4	6'-5 1/2"	T3	0'-4 1/2"	0'-4 1/2"	4'-8 1/2"																								
4A05	24	#4	5'-1 1/2"	T3	2'-8 1/2"	2'-8 1/2"	2'-5"																								
4A06	84	#4	6'-10 1/2"	T3	0'-4 1/2"	0'-4 1/2"	4'-8 1/2"																								



PAD FOOTING SCHEDULE

MARK	QTY	SIZE	GRID LOCATION	REINFORCING	REMARK
F3	5	3'-0" X 3'-0" X 2'-0"	SEE PLAN	5x2x5 #5 X 2'-6" B EW	
F4	7	4'-0" X 4'-0" X 2'-0"	SEE PLAN	7x2x6 #5 X 3'-6" B EW	

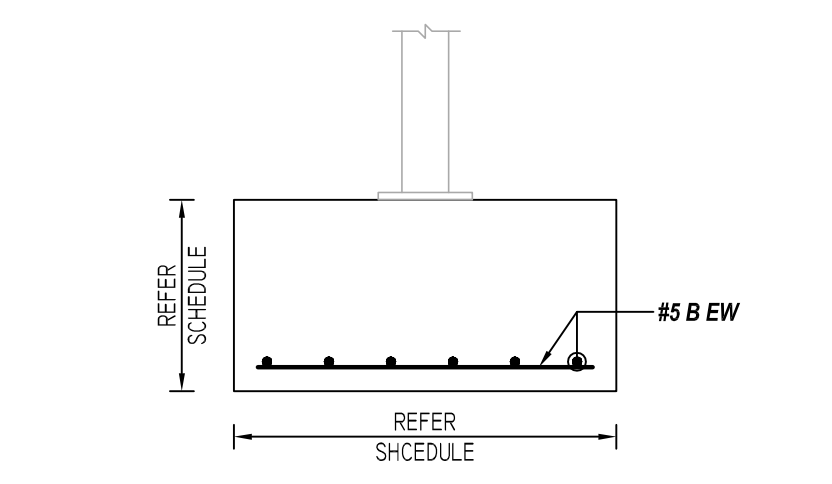
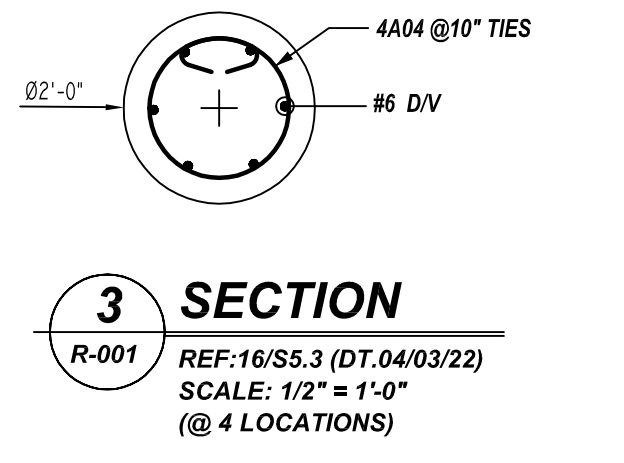
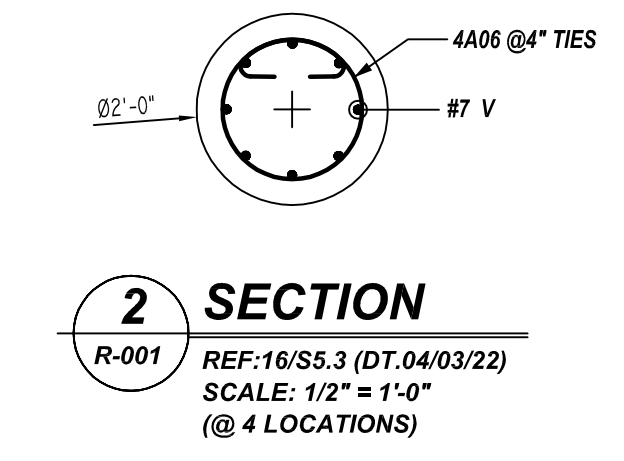
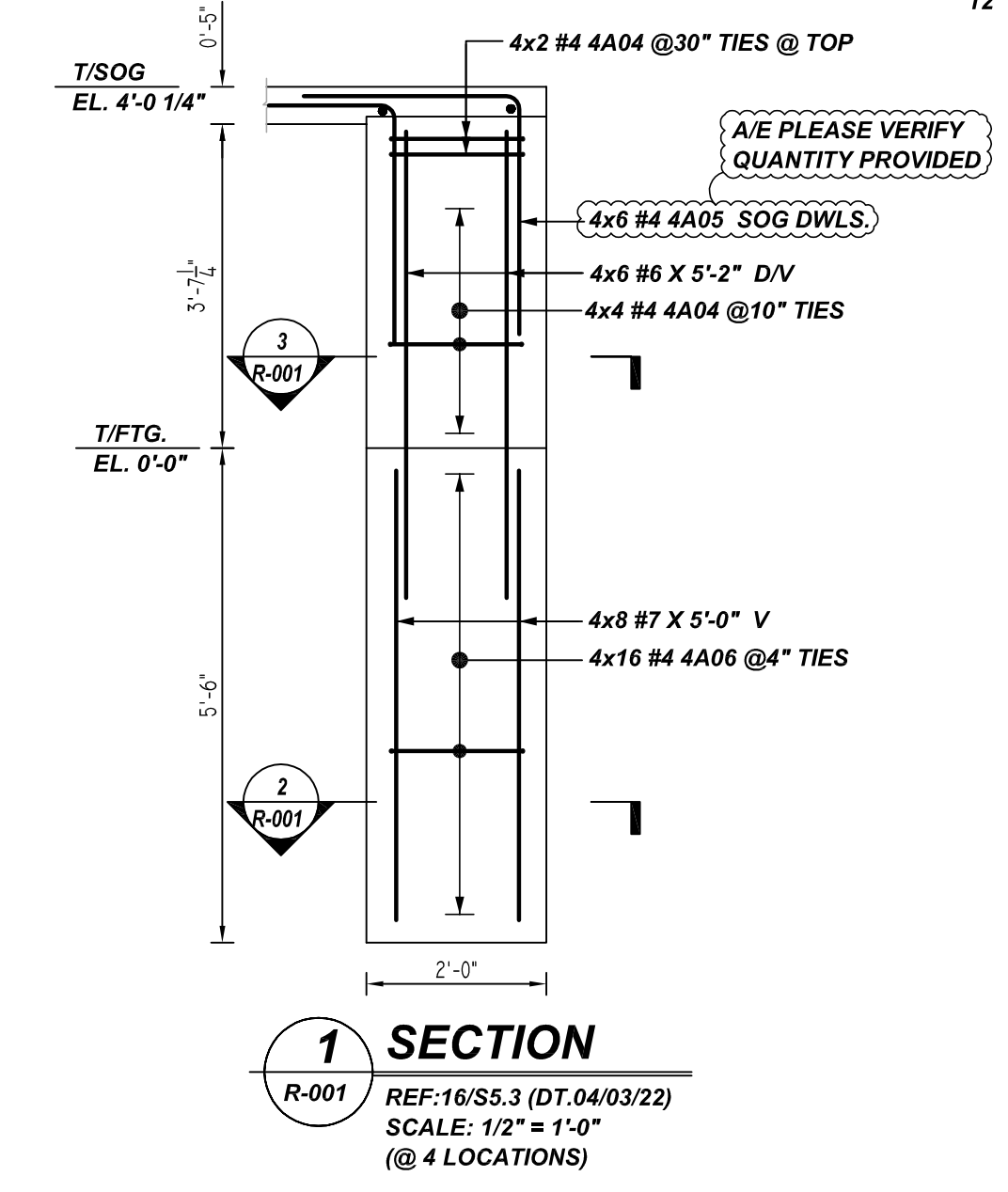
TYPICAL REINFORCING BAR CLEARANCE TABLE

LOCATION	MIN. COVER
PAD FOOTING BOTTOM	3" CLR
PAD FOOTING SIDES	3" CLR
CONTINUES FOOTING BOTTOM	3" CLR
CONTINUES FOOTING TOP	3" CLR

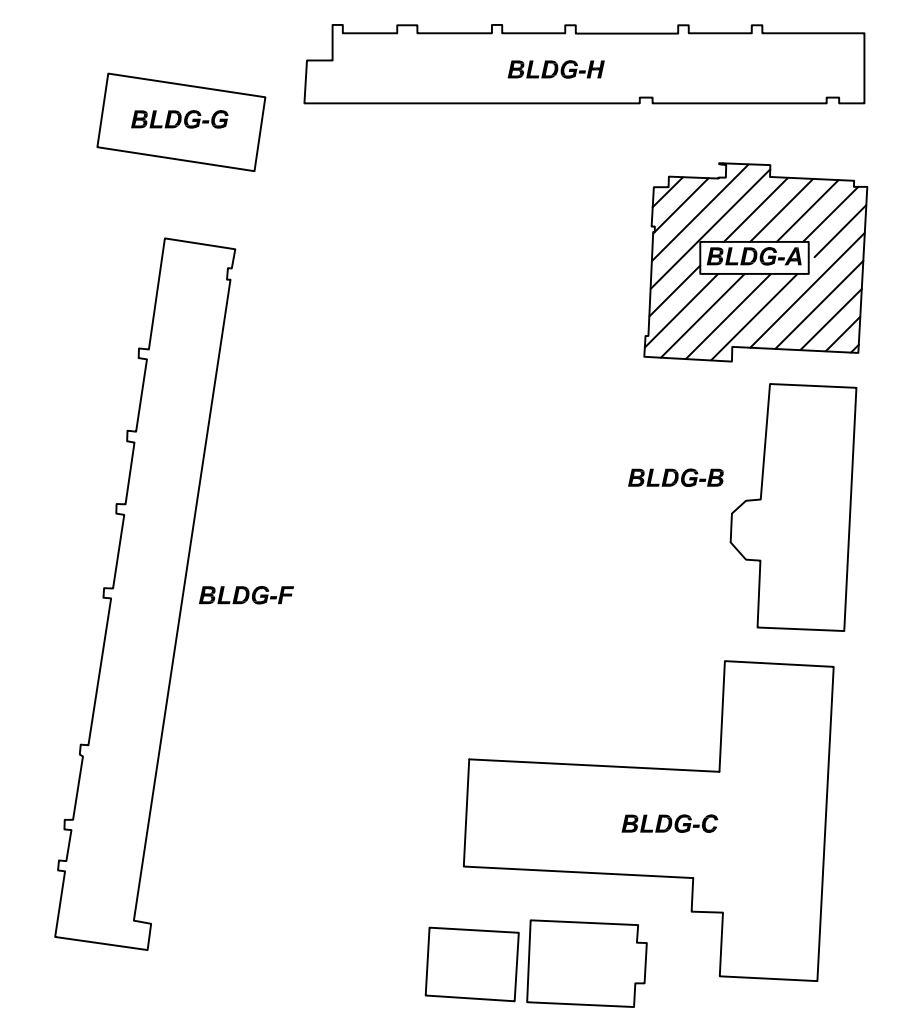
LAP SCHEDULE
3000 PSI (CLASS-B) CASE - 1
Per ACI 318 (12.2.2)

BAR#	LENGTHS	
	TOP	OTHERS
#3	2'-4"	1'-10"
#4	3'-1"	2'-5"
#5	3'-11"	3'-0"
#6	4'-8"	3'-7"
#7	6'-9"	5'-3"
#8	7'-9"	6'-0"
#9	8'-9"	6'-9"
#10	9'-10"	7'-7"
#11	10'-11"	8'-5"

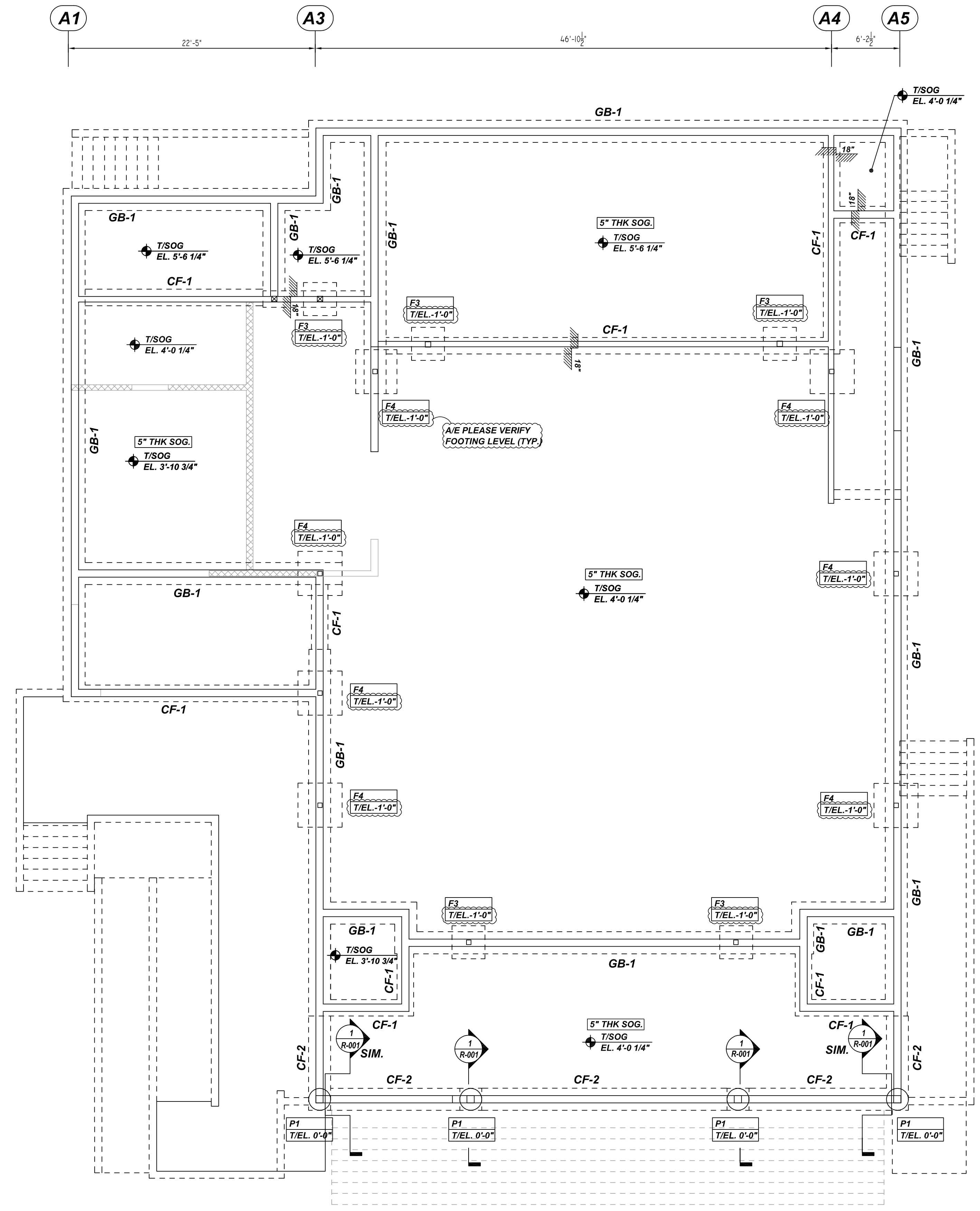
ALL TOP BARS ARE DEFINED AS HORIZ BARS WITH MORE THAN 12" OF CONCRETE BELOW BARS.



TYPICAL PAD FOOTING DETAILS
REF: S5.3 (DT. 04/03/22)
SCALE: 1/8" = 1'-0"



KEYPLAN
REF: SA-11.1 (DT. 04/03/22)
SCALE: 1/6" = 1'-0"

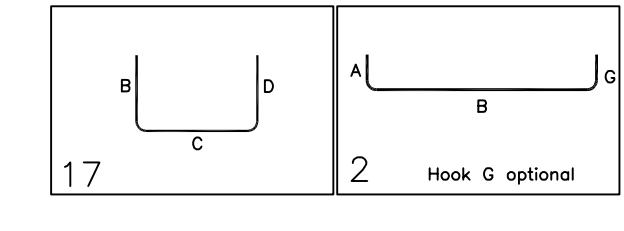


BUILDING-A PAD FOOTING & PIER REINFORCEMENT DETAILS
REF: SA-11.1 (DT. 04/03/22)
SCALE: 1/8" = 1'-0"

- PLACING PLAN NOTES:**
- THIS DRAWING IS FOR REBAR PLACEMENT ASSISTANCE ONLY. REFER TO STRUCTURAL DETAILS FOR CONTRACT REQUIREMENTS.
 - SECTIONS/DETAILS/DIMENSIONS ON PLACING PLAN ARE FOR REFERENCE ONLY AND ARE TO BE USED IN CONJUNCTION WITH CONTRACT DRAWINGS PER CRSI MANUAL OF STANDARD PRACTICE.
 - REINFORCING STEEL IS DETAILED PER CONTRACT DOCUMENTS ONLY AS SHOWN. CODE COMPLIANCE REQUIREMENTS ARE THE RESPONSIBILITY OF ENGINEER AND/OR CONTRACTOR.
 - THE CONTRACTOR IS UNDERSTANDING THAT THE ENGINEER SHOULD ALWAYS VERIFY SHOP DRAWINGS. IF TIME DOES NOT ALLOW FOR APPROVALS, P1'S IS NOT HELD RESPONSIBLE FOR UNAPPROVED SHOP DRAWINGS USED IN PLACING (CRSI MANUAL OF STANDARD PRACTICE). THE CUSTOMER AND ENGINEER SHOULD REVIEW SHOP DRAWINGS PRIOR TO INSTALLATION TO VERIFY ACCURACY TO STRUCTURAL DRAWINGS.
- PLACING NOTES:**
- DIMENSIONS, ELEVATIONS & DRAWING SCALES SHOWN ARE FOR REFERENCE ONLY. CONTRACTOR TO PROVIDE LINES, GRADES & TEMPLATES REQUIRED FOR PLACEMENT.
 - SECTIONS & DETAILS MAY NOT BE SHOWN ON ALL PLACING PLANS. KEEP STRUCTURAL DRAWINGS ON SITE FOR USE.
 - SOME LAP LENGTHS WILL BE ROUNDED UP IN DETAILING TO PROVIDE FOR 1" INCREMENTS FOR LAPS.
 - LAPS OR EMBEDMENT LENGTHS SHOWN IN SPECIFIC DETAILS WILL SUPERSEDE LAPS IN THE LAP SCHEDULE.
 - MILL CERTIFICATIONS ARE REQUIRED FOR ALL SHIPMENTS. IF BARS CANNOT BE IDENTIFIED, SPECIAL TESTING MAY BE DONE WITH SAMPLES CUT FROM SHIPMENT.
 - VERIFY PLACEMENT DRAWINGS TO LATEST ISSUE OF JOB RECORD DRAWINGS FOR POSSIBLE REVISIONS OR FIELD CHANGES.
 - TYPICAL NOTES & DETAILS ARE USED THROUGHOUT ENTIRE PROJECT & APPLY UNLESS NOTED OTHERWISE.

Release Number: R-003

Bar Mark	Qty	Size	Total Length	Type	X'	Y'	Z'	Y'	Y'	Y'	Y'	Y'	Y'	Y'	Y'
SA01	84	#5	7'-10"	T		3'-11"	3'-11"								
SA02	4	#5	14'-11"	T		3'-11"	7'-11"								
SA03	168	#5	7'-4"	T		0'-10"	6'-5"								
SA04	60	#5	7'-10"	T		0'-10"	7'-0"								
SA05	10	#5	8'-4"	T		0'-10"	7'-5"								
SA06	152	#5	8'-10"	T		0'-10"	8'-0"								
SA07	50	#5	7'-2"	T		0'-10"	6'-4"								



LAP SCHEDULE

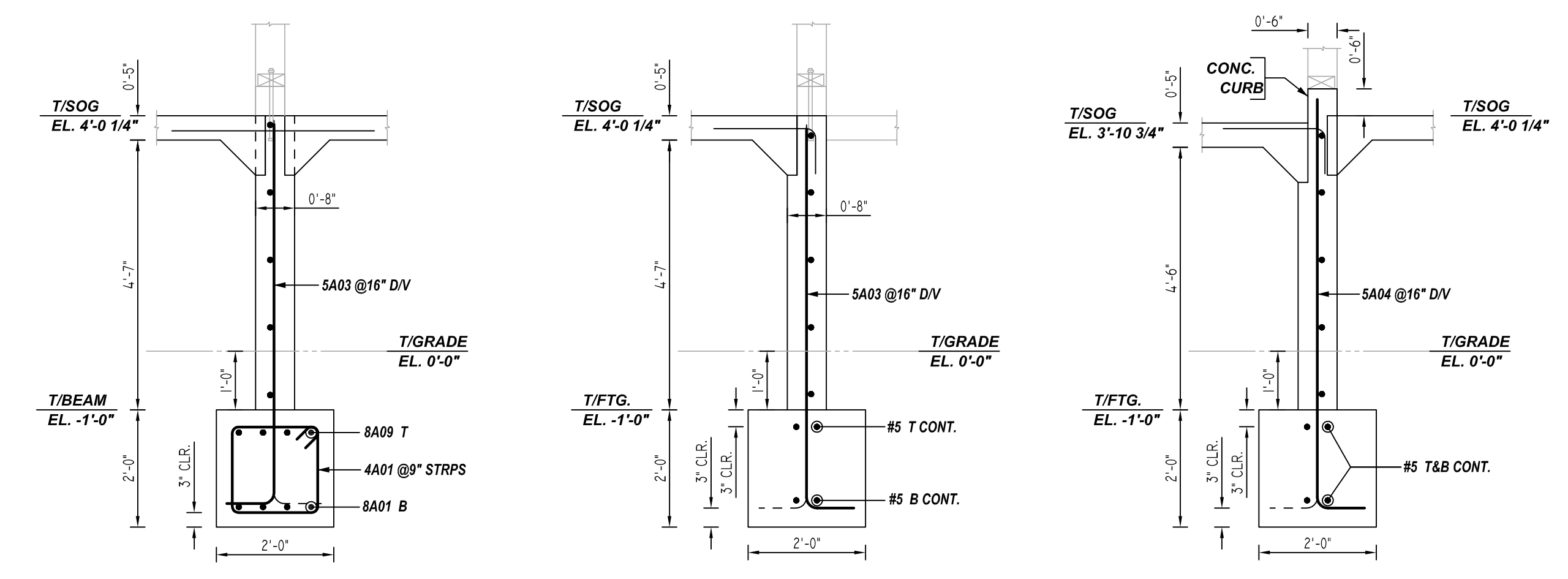
3000 PSI (CLASS-B) CASE - 1
 Per ACI 318 (12.2.2)

BAR#	LENGTHS	
	TOP	OTHERS
#3	2'-4"	1'-10"
#4	3'-1"	2'-5"
#5	3'-11"	3'-0"
#6	4'-8"	3'-7"
#7	6'-9"	5'-3"
#8	7'-9"	6'-0"
#9	8'-9"	6'-9"
#10	9'-10"	7'-7"
#11	10'-11"	8'-5"

ALL TOP BARS ARE DEFINED AS HORIZ BARS WITH MORE THAN 12" OF CONCRETE BELOW BARS.

TYPICAL REINFORCING BAR CLEARANCE TABLE

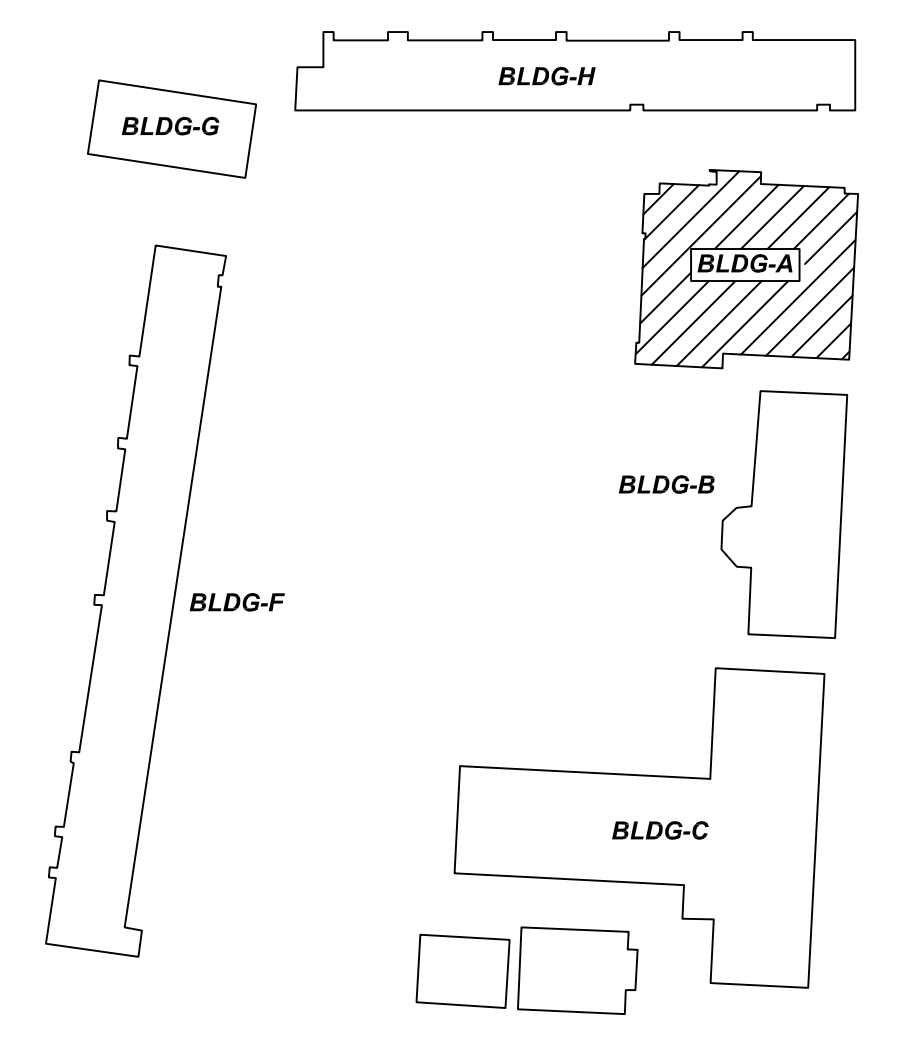
LOCATION	MIN. COVER
PAD FOOTING BOTTOM	3" CLR
PAD FOOTING SIDES	3" CLR
CONTINUOUS FOOTING BOTTOM	3" CLR
CONTINUOUS FOOTING TOP	3" CLR



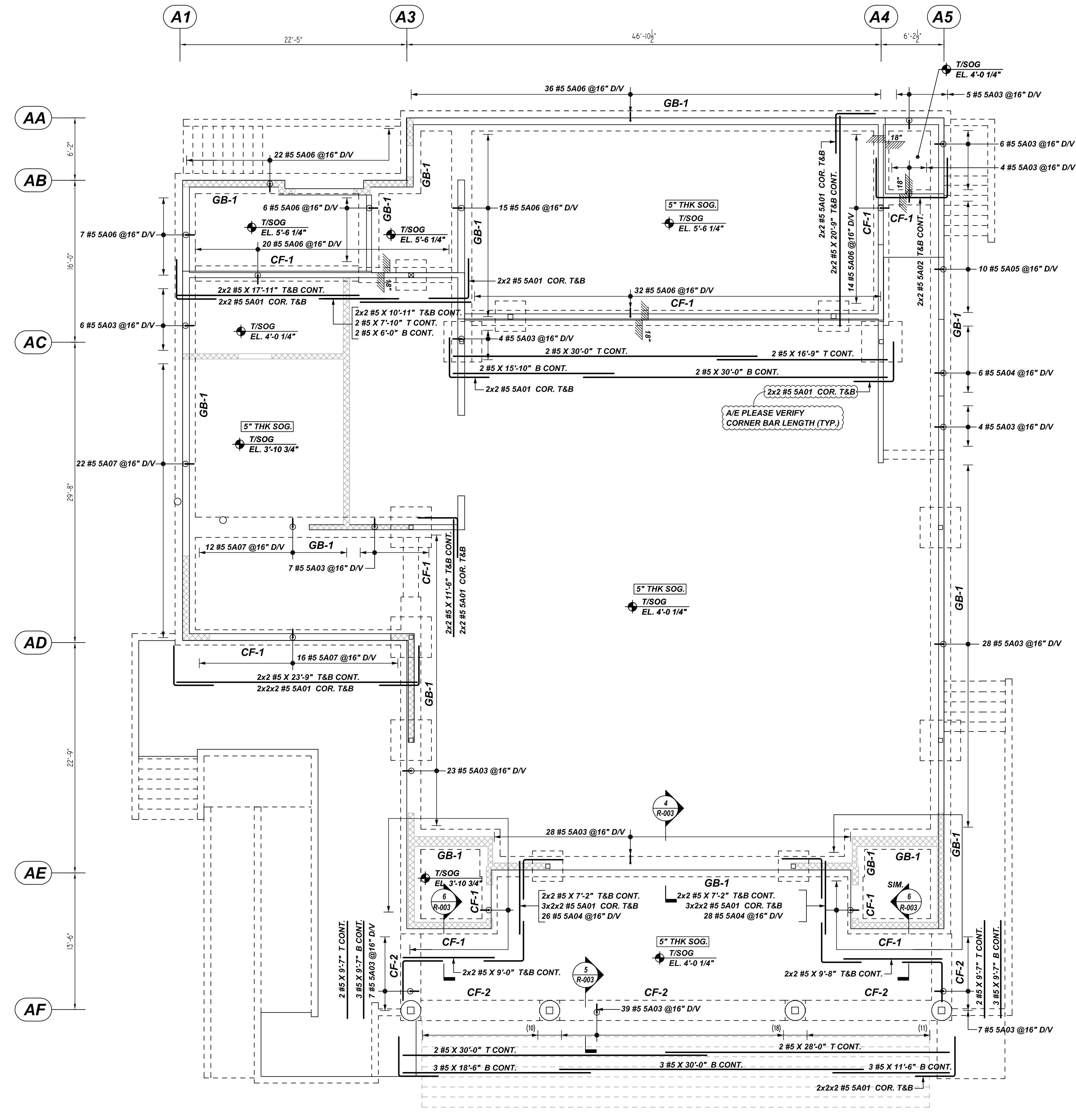
4 SECTION
 R-002 REF:7/S5.2 (DT.04/03/22)
 SCALE: 1/2" = 1'-0"

4 SECTION
 R-002 REF:4/SA41.2 (DT.04/03/22)
 SCALE: 1/2" = 1'-0"

6 SECTION
 R-002 REF:6/SA41.2 (DT.04/03/22)
 SCALE: 1/2" = 1'-0"



KEYPLAN
 REF:SA-11.1 (DT.04/03/22)
 SCALE: 1/6" = 1'-0"



BUILDING-A CONTINUOUS FOOTING & DOWEL REINFORCEMENT DETAILS
 REF:SA-11.1 (DT.04/03/22)
 SCALE: 1/6" = 1'-0"

- PLACING PLAN NOTES:
- THIS DRAWING IS FOR REBAR PLACEMENT ASSISTANCE ONLY; REFER TO STRUCTURAL DETAILS FOR CONTRACT REQUIREMENTS.
 - SECTIONS & DETAILS DIMENSIONS ON PLACING PLAN ARE FOR REFERENCE ONLY AND ARE TO BE USED IN CONJUNCTION WITH CONTRACT DRAWINGS PER CRSI MANUAL OF STANDARD PRACTICE.
 - REINFORCING STEEL IS DETAILED PER CONTRACT DOCUMENTS ONLY AS SHOWN. CODE COMPLIANCE REQUIREMENTS ARE THE RESPONSIBILITY OF ENGINEER AND/OR CONTRACTOR.
 - THE CONTRACTOR(S) UNDERSTANDS THAT THE ENGINEER SHOULD ALWAYS VERIFY SHOP DRAWINGS, IF TIME DOES NOT ALLOW FOR APPROVALS, P/S IS NOT HELD RESPONSIBLE FOR UNAPPROVED SHOP DRAWINGS USED IN PLACING (CRSI MANUAL OF STANDARD PRACTICE). THE CUSTOMER AND ENGINEER SHOULD REVIEW SHOP DRAWINGS PRIOR TO INSTALLATION TO VERIFY ACCURACY TO STRUCTURAL DRAWINGS.

- PLACING NOTES:
- DIMENSIONS, ELEVATIONS & DRAWING SCALES SHOWN ARE FOR REFERENCE ONLY. CONTRACTOR TO PROVIDE LINES, GRADES & TEMPLATES REQUIRED FOR PLACEMENT.
 - SECTIONS & DETAILS MAY NOT BE SHOWN ON ALL PLACING PLANS. KEEP STRUCTURAL DRAWINGS ON SITE FOR USE.
 - SOME LAP LENGTHS WILL BE ROUNDED UP IN DETAILING TO PROVIDE FOR 1" INCREMENTS FOR LAPS.
 - LAPS OR EMBEDMENT LENGTHS SHOWN IN SPECIFIC DETAILS WILL SUPERSEDE LAPS IN THE LAP SCHEDULE.
 - MILL CERTIFICATIONS ARE REQUIRED FOR ALL SHIPMENTS. IF BARS CANNOT BE IDENTIFIED, SPECIAL TESTING MAY BE DONE WITH SAMPLES CUT FROM SHIPMENT.
 - VERIFY PLACEMENT DRAWINGS TO LATEST ISSUE OF JOB RECORD DRAWINGS FOR POSSIBLE REVISIONS OR FIELD CHANGES.
 - TYPICAL NOTES & DETAILS ARE USED THROUGHOUT ENTIRE PROJECT & APPLY UNLESS NOTED OTHERWISE.

