

FOUNDATION LAYOUT
 REF: S100 (DT.03/04/22)
 SCALE: 1/6" = 1'-0"

NOTES

TYPICAL REINFORCING BAR CLEARANCE TABLE

LOCATION	MIN. COVER
SPOT FOOTING SIDE & BOTTOM	3" CLR
SPOT FOOTING TOP	2" CLR
GRADE BEAM SIDE & BOTTOM	3" CLR
GRADE BEAM TOP	2" CLR
SLAB ON GRADE TOP	1 1/2" CLR

**ALL BARS IN THIS DRAWING
 ASTM A615 GRADE 60
 BLACK UNCOATED**

LAP SCHEDULE

3000 PSI (CLASS-B) CASE - 1
 Per ACI 318 (12.2.2)

BAR#	LENGTHS	
	TOP	OTHERS
#3	2'-4"	1'-10"
#4	3'-1"	2'-5"
#5	3'-11"	3'-0"
#6	4'-8"	3'-7"
#7	6'-9"	5'-3"
#8	7'-9"	6'-0"
#9	8'-9"	6'-9"
#10	9'-10"	7'-7"
#11	10'-11"	8'-5"

ALL TOP BARS ARE DEFINED AS HORIZ BARS WITH MORE THAN 12" OF CONCRETE BELOW BARS.

LABEL NOTES:-

- B** = BOTTOM
- CLR** = CLEAR
- CONT.** = CONTINUOUS
- DWLS** = DOWELS
- EL** = ELEVATION
- FTG** = FOOTING
- RE** = REFER
- REINF.** = REINFORCEMENT
- S.O.G** = SLAB ON GRADE
- STIRR.** = STIRRUPS
- T** = TOP
- T/FTG** = TOP OF FOOTING
- TYP.** = TYPICAL

FOOTING SCHEDULE

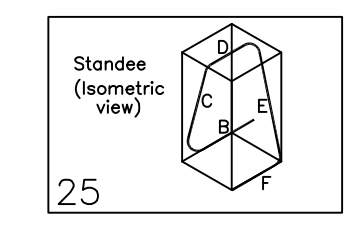
TYPE	QTY	SIZE	GRID LOCATIONS	T/FTG ELEVATION	REINFORCING			REMARKS
					BOTTOM	TOP	STANDEES	
					A	6	2'-0"x2'-0"x2'-0"	
A	17	2'-0"x2'-0"x1'-0"	A.4-2, A.5-2, C.2-2, C.9-2, D.3-2, E.1-2, A.1-2.1, A.6-2.5, B.4-2.5, C.1-2.5, A.1-2.9, A.4-3, A.5-3, C.2-3, C.9-3, D.3-3, E.1-3	98'-0"	17x2x3 #5 X 1'-6" @12" EW	17x2x3 #5 X 1'-6" @12" EW	17x4 #4 4A04 @48" STANDEES	
B	4	3'-4"x3'-4"x2'-0"	A.0-2, A.0-3, H-2, H-3	100'-0"	4x2x4 #5 X 2'-10" @12" EW	4x2x4 #5 X 2'-10" @12" EW	4x4 #4 4A03 @48" STANDEES	

A/E PLEASE VERIFY FOOTING SIZE PROVIDED TYP.

A/E PLEASE VERIFY TOP OF FOOTING ELEVATION TYP.

Release Number: R1.001

Bar Mark	Qty	Size	Total Length	Type	X	Y	Z	W	V	U	T	S	R	Q	P	O	N	M	L	K	J	I	H	G	F	E	D	C	B	A	
4A03	40	#4	7'-6 1/2"	25		1'-7"	1'-4 1/2"	1'-7"	1'-4 1/2"	1'-7"	1'-4 1/2"	1'-7"	1'-4 1/2"	1'-7"	1'-4 1/2"	1'-7"	1'-4 1/2"	1'-7"	1'-4 1/2"	1'-7"	1'-4 1/2"	1'-7"	1'-4 1/2"	1'-7"	1'-4 1/2"	1'-7"	1'-4 1/2"	1'-7"	1'-4 1/2"	1'-7"	1'-4 1/2"
4A04	88	#4	5'-6 1/2"	25		1'-7"	0'-4 1/2"	1'-7"	0'-4 1/2"	1'-7"	0'-4 1/2"	1'-7"	0'-4 1/2"	1'-7"	0'-4 1/2"	1'-7"	0'-4 1/2"	1'-7"	0'-4 1/2"	1'-7"	0'-4 1/2"	1'-7"	0'-4 1/2"	1'-7"	0'-4 1/2"	1'-7"	0'-4 1/2"	1'-7"	0'-4 1/2"	1'-7"	0'-4 1/2"

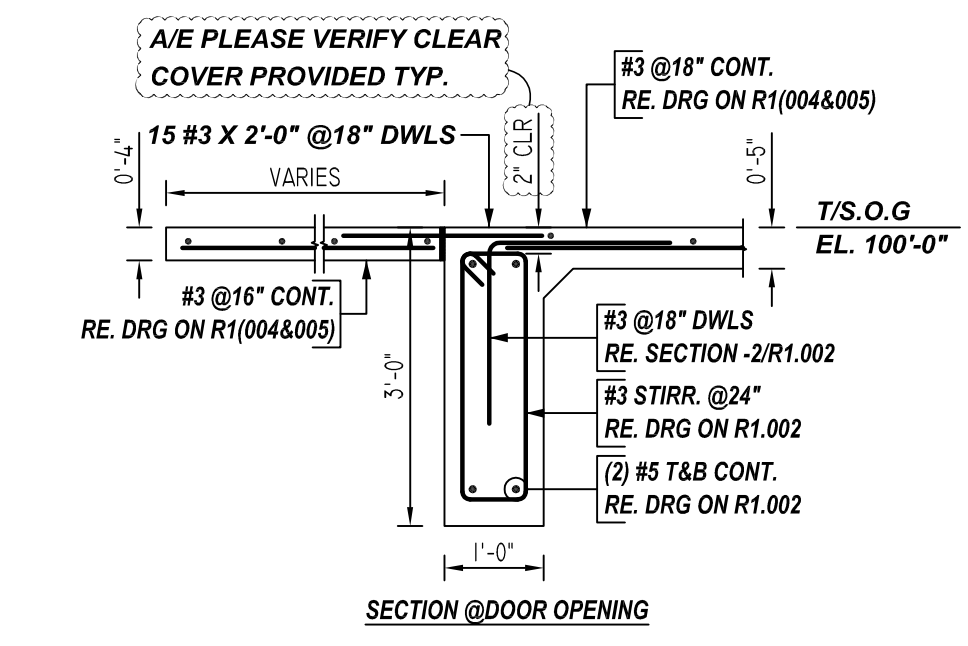
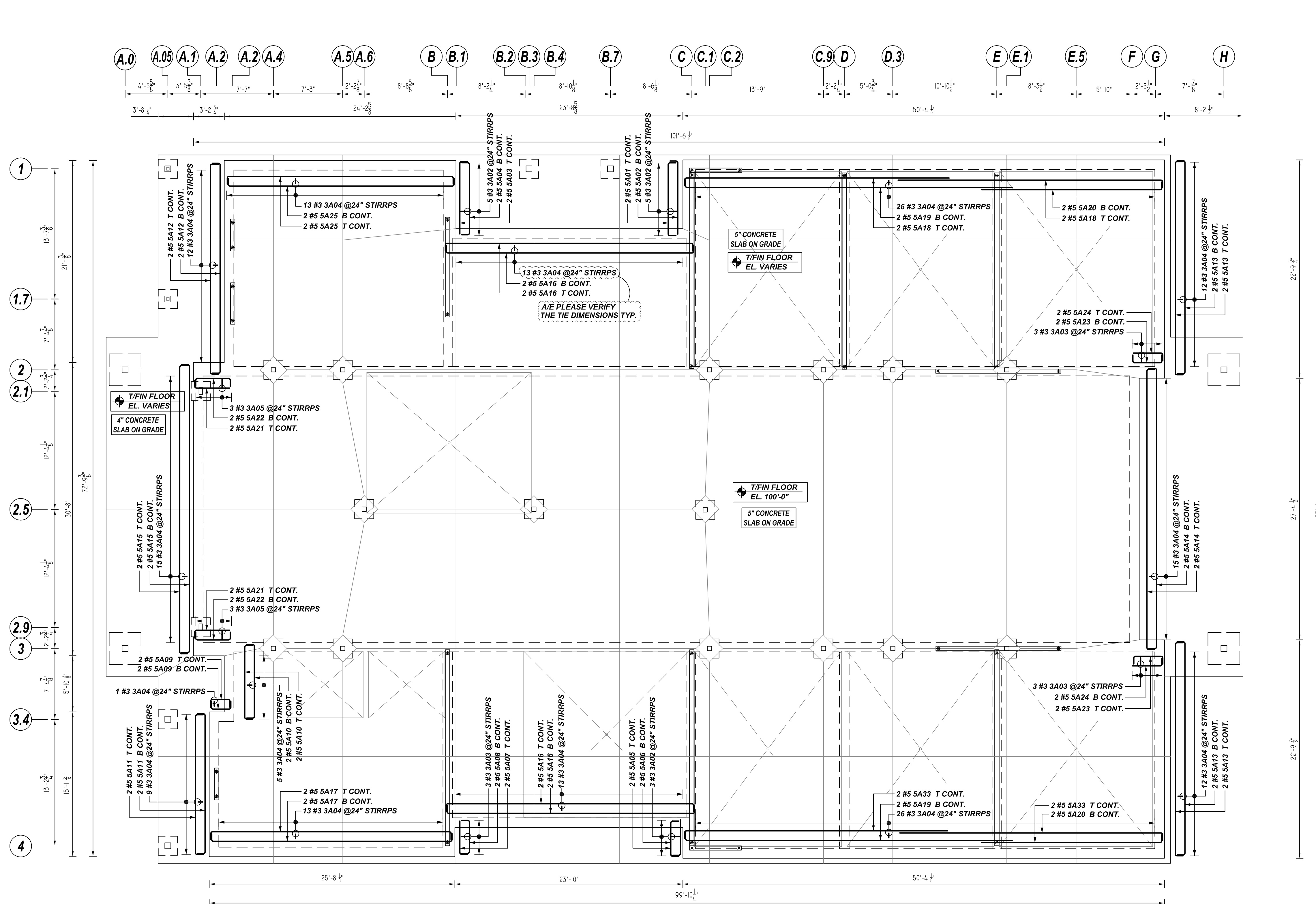


REV NO	DATE	SENT FOR
0	09/05/23	FOR APPROVAL

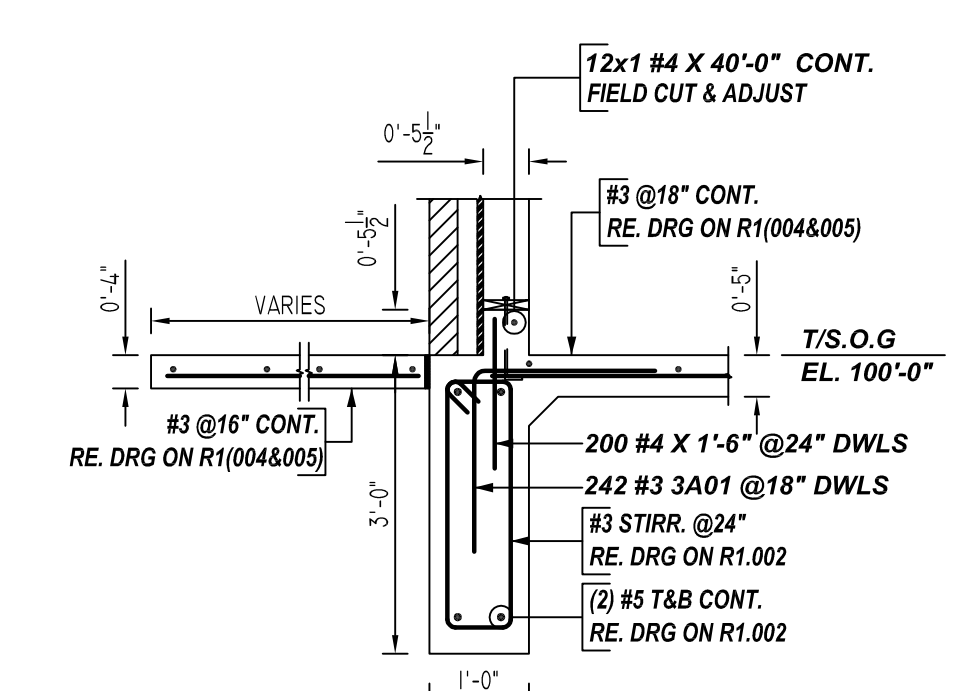
DESCRIPTION: FOUNDATION LAYOUT
 CONTRACTOR: C3 ENVIRONMENTAL
 ENGINEER: -
 DRAWN BY: BCS

R1.001

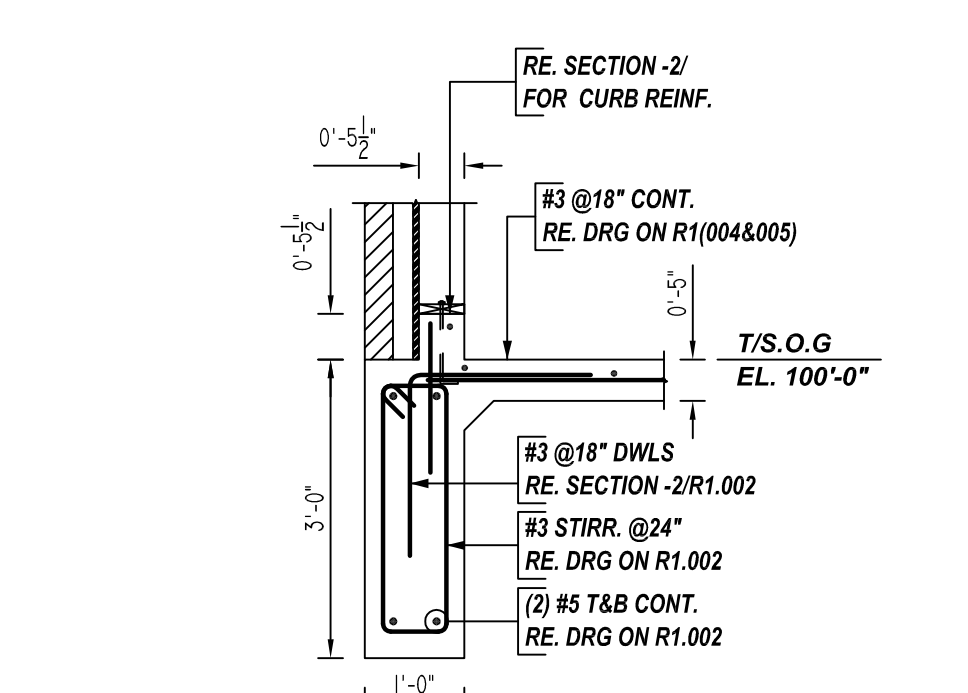
D22360



1 SECTION
 REF: S300 (DT.03/04/22)
 SCALE: 1/2" = 1'-0"



2 SECTION
 REF: S300 (DT.03/04/22)
 SCALE: 1/2" = 1'-0"

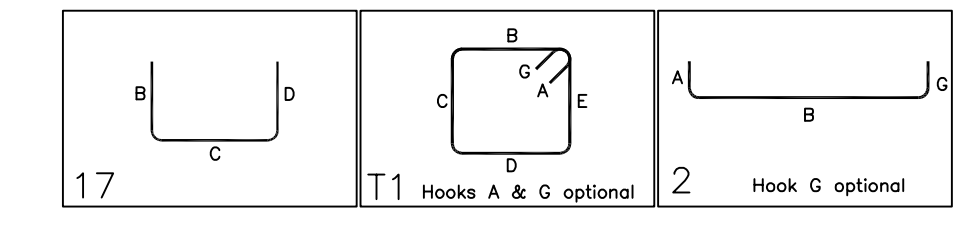


3 SECTION
 REF: S300 (DT.03/04/22)
 SCALE: 1/2" = 1'-0"

GRADE BEAMS REINFORCEMENT DETAILS
 REF: S100 (DT.03/04/22)
 SCALE: 1/8" = 1'-0"

Bar Mark	Qty	Size	Total Length	Type	X	Y	Z	W	V	U	T	S	R	Q	P	O	N	M	L	K	J	I	H	G	F	E	D	C	B	A
SA01	243	#3	3'-8"	17		1'-10"	1'-10"																							
SA02	13	#3	7'-6 X"	11	0'-4 X"	2'-7"	0'-10"	0'-10"	2'-7"	0'-10"																				
SA03	9	#3	7'-4 X"	11	0'-4 X"	2'-7"	0'-9"	2'-7"	0'-9"																					
SA04	185	#3	6'-10 X"	11	0'-4 X"	2'-7"	0'-6"	2'-7"	0'-6"																					
SA05	6	#3	7'-8 X"	11	0'-4 X"	2'-7"	0'-11"	2'-7"	0'-11"																					
SA06	2	#5	9'-4"	2	0'-10"	7'-9"																								
SA07	2	#5	8'-6"	2	0'-10"	7'-9"																								
SA08	2	#5	8'-5"	2	0'-10"	7'-7"																								
SA09	2	#5	8'-11"	2	0'-10"	7'-7"																								
SA10	2	#5	5'-4 X"	2	0'-10"	3'-8 X"																								
SA11	2	#5	4'-7"	2	0'-10"	3'-9"																								
SA12	2	#5	4'-4"	2	0'-10"	3'-6"																								
SA13	2	#5	5'-2"	2	0'-10"	3'-6"																								
SA14	4	#5	3'-8 X"	2	0'-10"	2'-8 X"																								
SA15	4	#5	9'-5"	2	0'-10"	7'-9"																								
SA16	4	#5	15'-2"	2	0'-10"	14'-8"																								
SA17	4	#5	23'-0"	2	0'-10"	22'-9"																								
SA18	4	#5	24'-0"	2	0'-10"	22'-4"																								
SA19	4	#5	31'-0"	2	0'-10"	29'-4"																								
SA20	4	#5	31'-10"	2	0'-10"	30'-2"																								
SA21	8	#5	27'-7"	2	0'-10"	25'-11"																								
SA22	4	#5	26'-10"	2	0'-10"	25'-2"																								
SA23	4	#5	28'-6"	2	0'-10"	27'-9"																								

Bar Mark	Qty	Size	Total Length	Type	X	Y	Z	W	V	U	T	S	R	Q	P	O	N	M	L	K	J	I	H	G	F	E	D	C	B	A
SA19	4	#5	35'-0"	2	0'-10"	34'-2"																								
SA20	4	#5	19'-4"	2	0'-10"	18'-10"																								
SA21	4	#5	4'-6"	2	0'-10"	3'-8"																								
SA22	4	#5	5'-4"	2	0'-10"	3'-8"																								
SA23	4	#5	4'-9"	2	0'-10"	3'-11"																								
SA24	4	#5	3'-11"	2	0'-10"	3'-11"																								
SA25	4	#5	25'-4"	2	0'-10"	23'-8"																								
SA26	4	#5	28'-4"	2	0'-10"	27'-6"																								



LAP SCHEDULE
 3000 PSI (CLASS-B) CASE-1
 Per ACI:318 (12.2.2)

BAR#	LENGTHS	
	TOP	OTHERS
#3	2'-4"	1'-10"
#4	3'-1"	2'-5"
#5	3'-11"	3'-0"
#6	4'-8"	3'-7"
#7	6'-9"	5'-3"
#8	7'-9"	6'-0"
#9	8'-9"	6'-9"
#10	9'-10"	7'-7"
#11	10'-11"	8'-5"

ALL TOP BARS ARE DEFINED AS HORIZ BARS WITH MORE THAN 12" OF CONCRETE BELOW BARS.

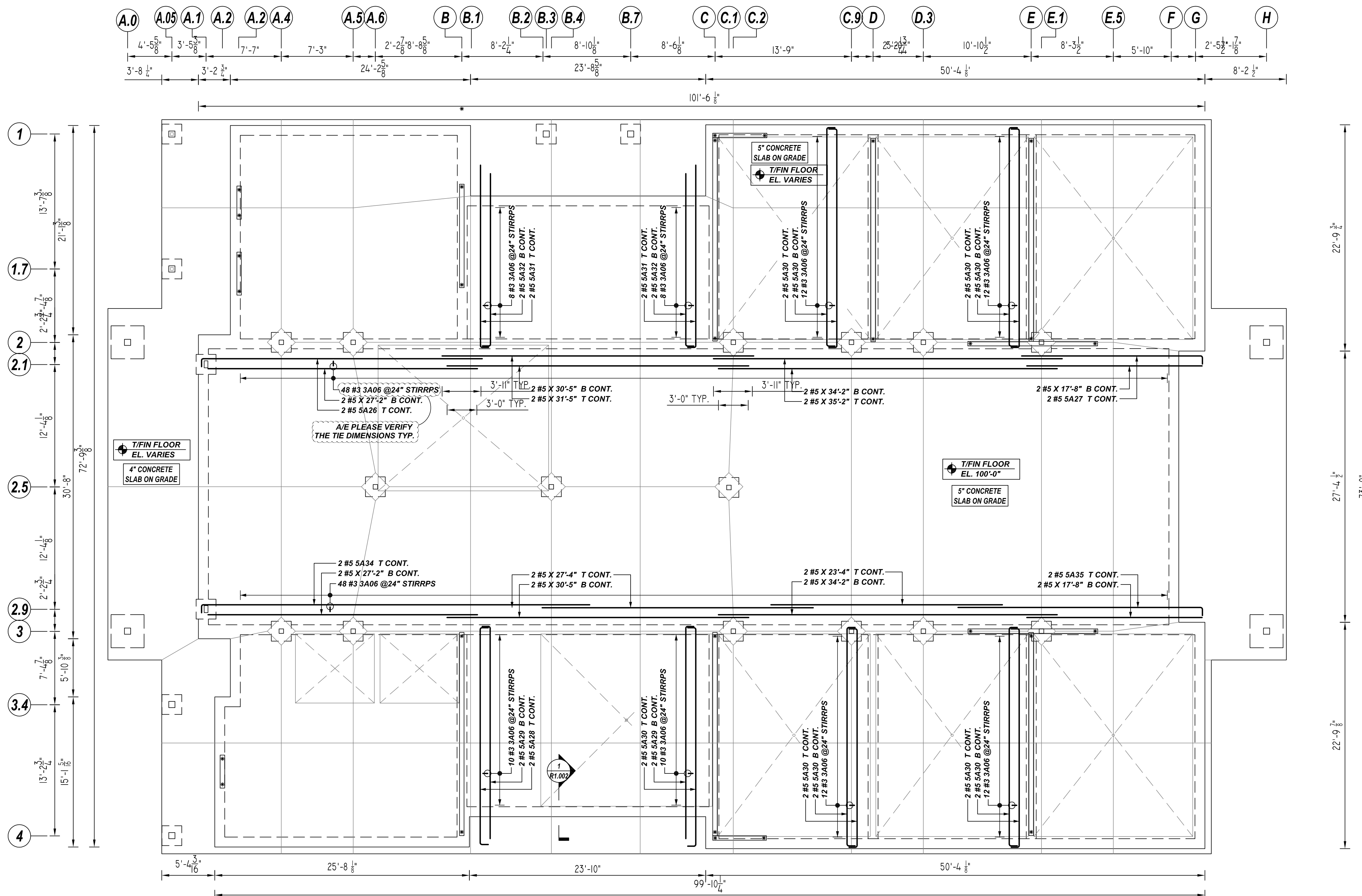
NOTES

LOCATION	MIN. COVER
SPOT FOOTING SIDE & BOTTOM	3" CLR
SPOT FOOTING TOP	2" CLR
GRADE BEAM SIDE & BOTTOM	3" CLR
GRADE BEAM TOP	2" CLR
SLAB ON GRADE TOP	1 1/2" CLR

LABEL NOTES:-

- B = BOTTOM
- CLR = CLEAR
- CONT. = CONTINUOUS
- DWLS = DOWELS
- EL = ELEVATION
- FTG = FOOTING
- RE. = REFER
- REINF. = REINFORCEMENT
- S.O.G. = SLAB ON GRADE
- STIRR. = STIRRUPS
- T = TOP
- T/FTG = TOP OF FOOTING
- TYP. = TYPICAL

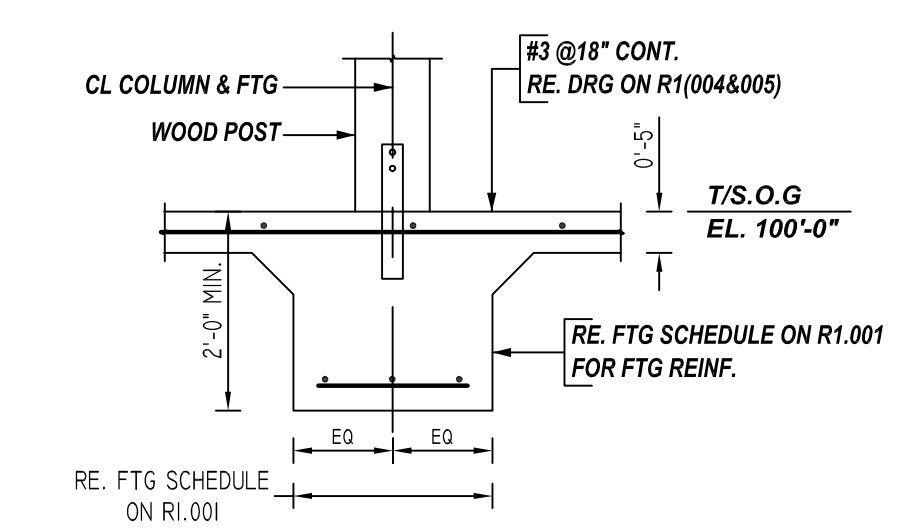
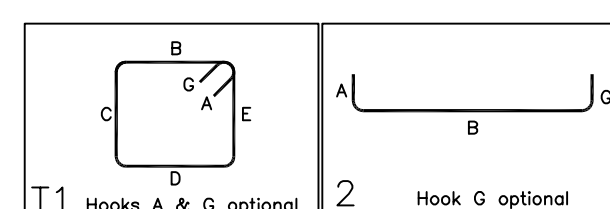
**ALL BARS IN THIS DRAWING
 ASTM A615 GRADE 60
 BLACK UNCOATED**



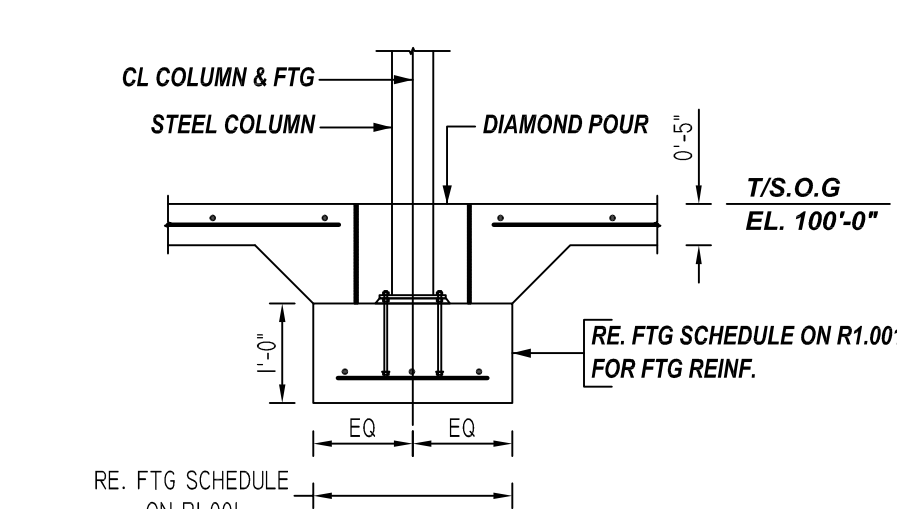
GRADE BEAM REINFORCEMENT DETAILS

REF: S100 (DT.03/04/22)
SCALE: 1/8" = 1'-0"

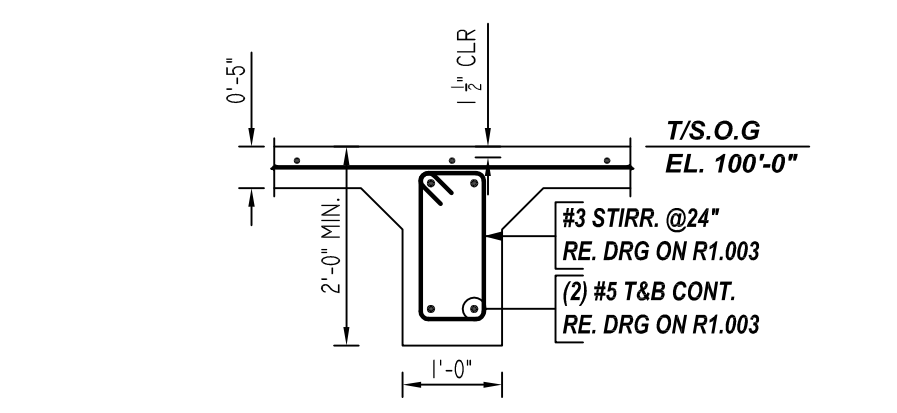
Bar Mark	Qty	Size	Total Length	Type	X'	Y'	Z'	W'	V'	U'	T'	S'	R'	Q'	P'	O'	N'	M'	L'	K'	J'	I'	H'	G'	F'	E'	D'	C'	B'	A'
3A06	180	#3	4'-10 5/8"	T1	0'-4 1/4"	1'-7"	0'-6"	1'-7"	0'-6"	0'-4 1/4"																				
5A30	2	#5	29'-2"	2	0'-10"	28'-4"																								
5A32	2	#5	19'-1"	2	0'-10"	18'-3"																								
5A33	2	#5	23'-7"	2	0'-10"	21'-10"																								
5A34	4	#5	27'-1"	2	0'-10"	21'-5"																								
5A35	18	#5	23'-9"	2	0'-10"	22'-1"																								
5A36	4	#5	19'-3"	2	0'-10"	18'-5"																								
5A37	4	#5	18'-3"	2	0'-10"	17'-5"																								
5A38	2	#5	40'-0"	2	0'-10"	39'-2"																								
5A39	2	#5	25'-6"	2	0'-10"	24'-8"																								



4 SECTION
REF: S300 (DT.03/04/22)
SCALE: 1/2" = 1'-0"



5 SECTION
REF: S300 (DT.03/04/22)
SCALE: 1/2" = 1'-0"



6 SECTION
REF: S300 (DT.03/04/22)
SCALE: 1/2" = 1'-0"

LAP SCHEDULE

3000 PSI (CLASS-B) CASE - 1
Per ACI 318 (12.2.2)

BAR#	LENGTHS	
	TOP	OTHERS
#3	2'-4"	1'-10"
#4	3'-1"	2'-5"
#5	3'-11"	3'-0"
#6	4'-8"	3'-7"
#7	6'-9"	5'-3"
#8	7'-9"	6'-0"
#9	8'-9"	6'-9"
#10	9'-10"	7'-7"
#11	10'-11"	8'-5"

ALL TOP BARS ARE DEFINED AS HORIZ BARS WITH MORE THAN 12" OF CONCRETE BELOW BARS.

NOTES

TYPICAL REINFORCING BAR CLEARANCE TABLE	
LOCATION	MIN. COVER
SPOT FOOTING SIDE & BOTTOM	3" CLR
SPOT FOOTING TOP	2" CLR
GRADE BEAM SIDE & BOTTOM	3" CLR
GRADE BEAM TOP	2" CLR
SLAB ON GRADE TOP	1 1/2" CLR

**ALL BARS IN THIS DRAWING
ASTM A615 GRADE 60
BLACK UNCOATED**

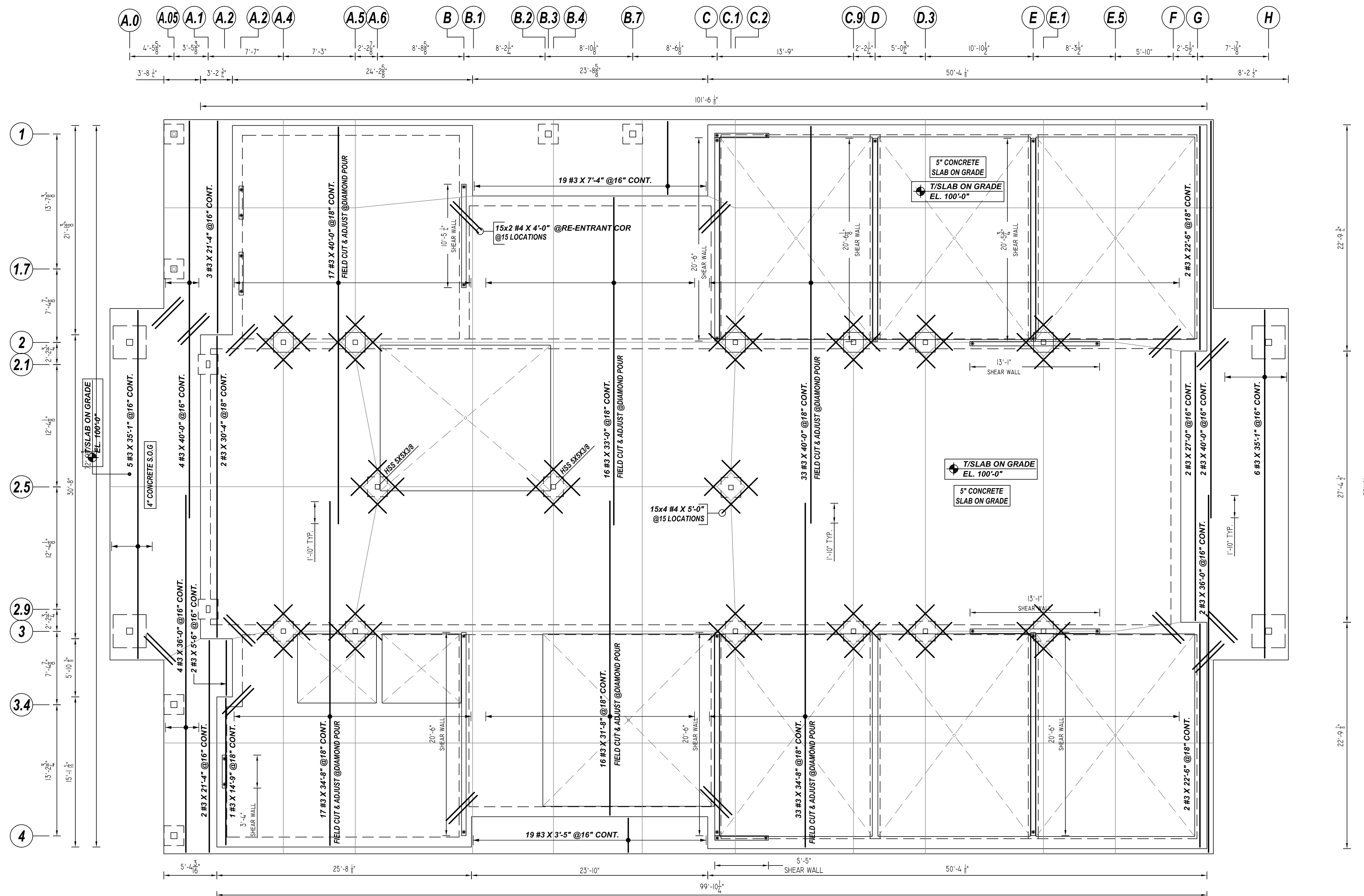
LABEL NOTES:-

- B = BOTTOM
- CLR = CLEAR
- CONT. = CONTINUOUS
- DWLS = DWELS
- EL = ELEVATION
- FTG = FOOTING
- RE. = REFER
- REINF. = REINFORCEMENT
- S.O.G = SLAB ON GRADE
- STIRR. = STIRRUPS
- T = TOP
- T/FTG = TOP OF FOOTING
- TYP. = TYPICAL

DESCRIPTION: GRADE BEAM REINFORCEMENT	REV NO	DATE	SENT FOR APPROVAL
CONTRACTOR: C3 ENVIRONMENTAL	0	09/05/23	
ENGINEER:			
DRAWN BY: BCS			

R1.003

D22360



SLAB ON GRADE REINFORCEMENT DETAILS

REF: S100 (DT, 03/04/22)
SCALE: 1/8" = 1'-0"

LAP SCHEDULE

3000 PSI (CLASS-B) CASE - 1
Per ACI: 318 (12.2.2)

BAR#	LENGTHS	
	TOP	OTHERS
#3	2'-4"	1'-10"
#4	3'-1"	2'-5"
#5	3'-11"	3'-0"
#6	4'-8"	3'-7"
#7	6'-9"	5'-3"
#8	7'-9"	6'-0"
#9	8'-9"	6'-9"
#10	9'-10"	7'-7"
#11	10'-11"	8'-5"

ALL TOP BARS ARE DEFINED AS HORIZ BARS WITH MORE THAN 12" OF CONCRETE BELOW BARS.

NOTES

TYPICAL REINFORCING BAR CLEARANCE TABLE	
LOCATION	MIN. COVER
SPOT FOOTING SIDE & BOTTOM	3" CLR
SPOT FOOTING TOP	2" CLR
GRADE BEAM SIDE & BOTTOM	3" CLR
GRADE BEAM TOP	2" CLR
SLAB ON GRADE TOP	1 1/2" CLR

**ALL BARS IN THIS DRAWING
ASTM A615 GRADE 60
BLACK UNCOATED**

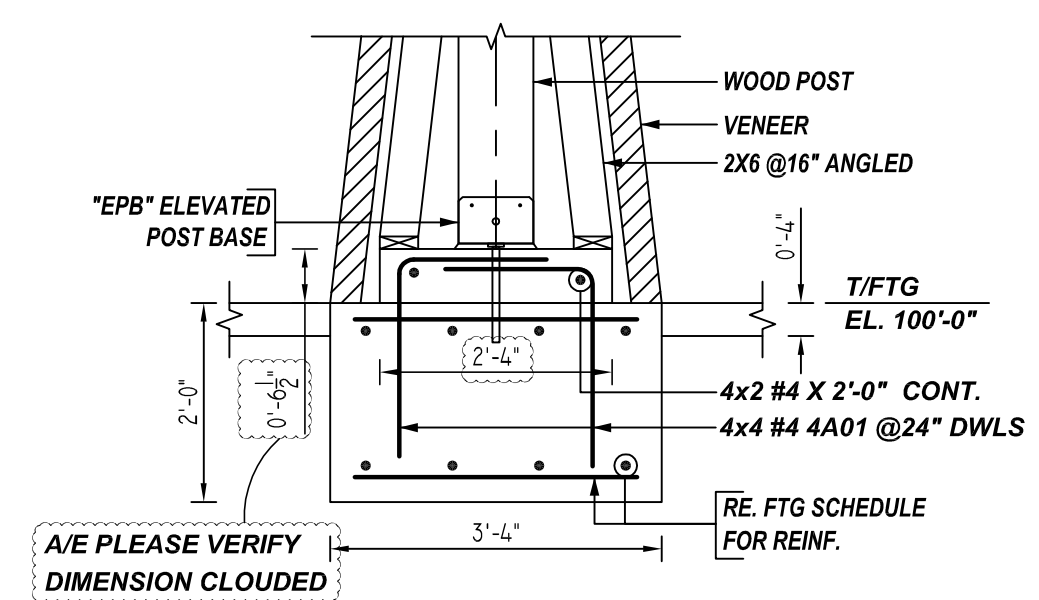
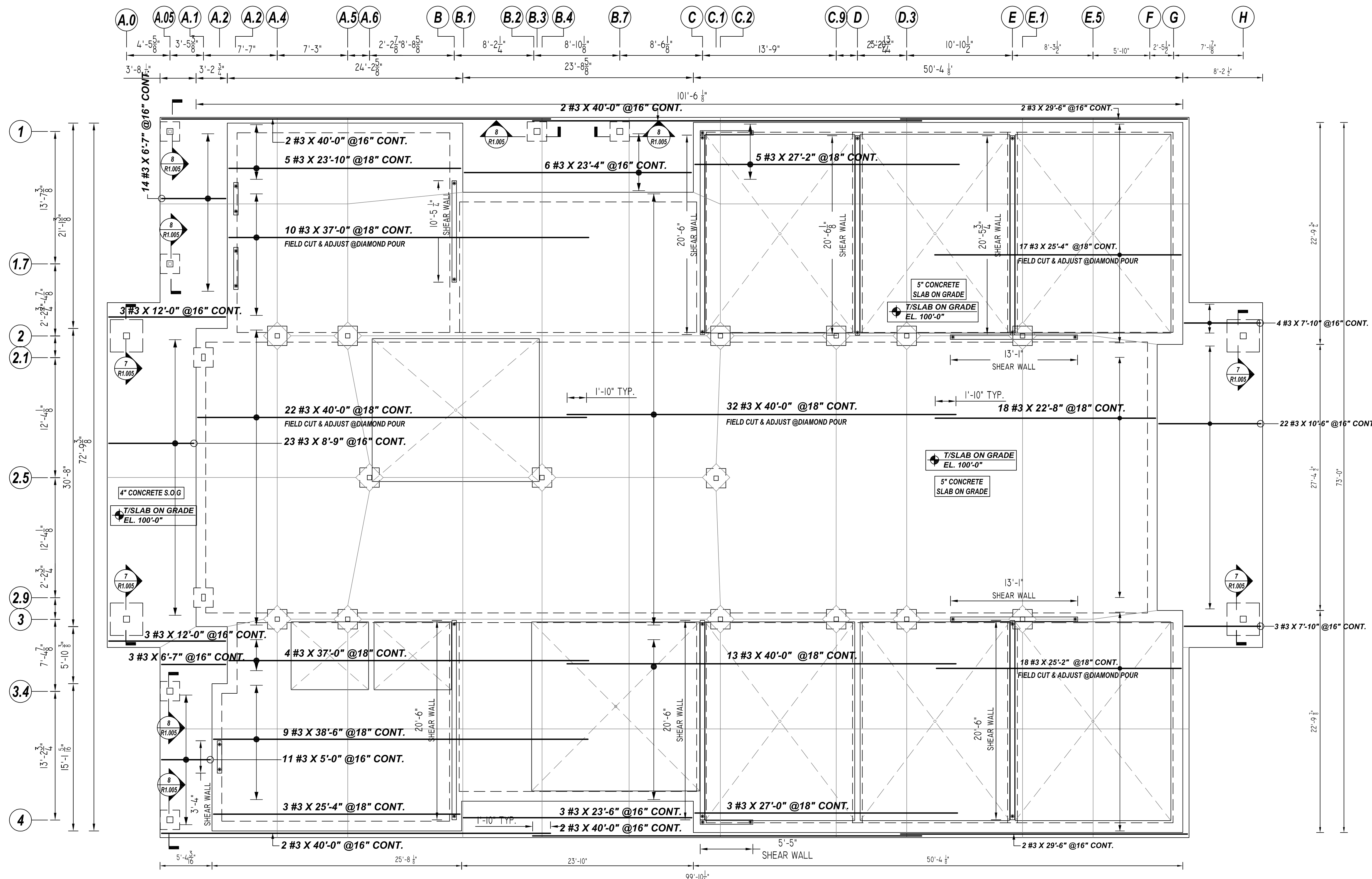
LABEL NOTES:-

- B = BOTTOM
- CLR = CLEAR
- CONT. = CONTINUOUS
- DWLS = DWELS
- EL = ELEVATION
- FTG = FOOTING
- RE. = REFER
- REINF. = REINFORCEMENT
- S.O.G = SLAB ON GRADE
- STIRR. = STIRRUPS
- T = TOP
- T/FTG = TOP OF FOOTING
- TYP. = TYPICAL

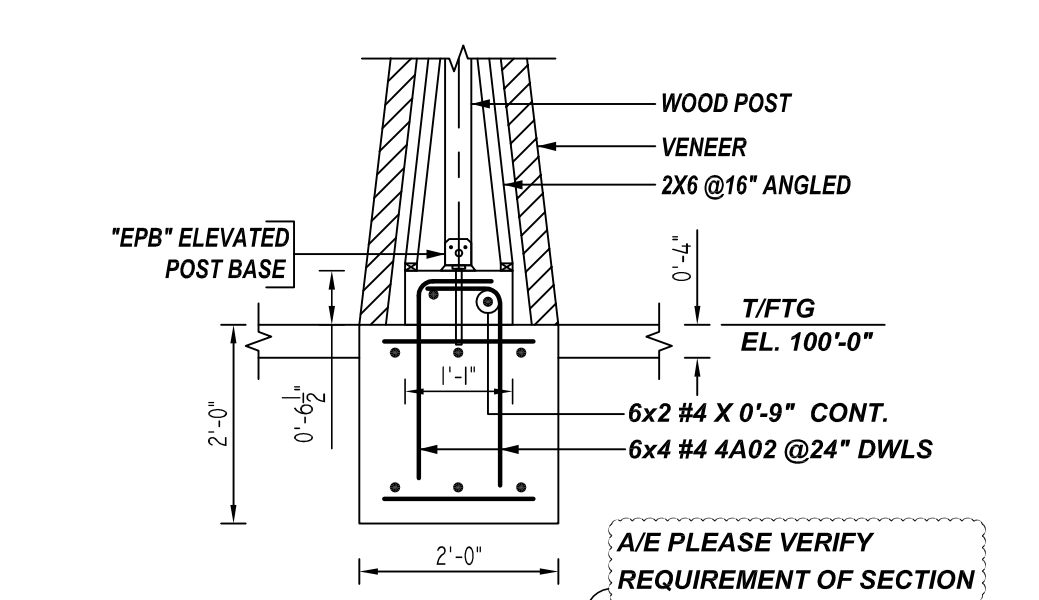
DESCRIPTION: SLAB ON GRADE REINFORCEMENT DETAILS	REV. NO	DATE	SENT FOR
CONTRACTOR: C3 ENVIRONMENTAL	0	09/05/23	FOR APPROVAL
ENGINEER:			
DRAWN BY: BCS			

R1.004

D22360



7 SECTION
 REF: S/S300, A513 (DT.03/04/22)
 SCALE: 1/2" = 1'-0"
 (@4 LOCATIONS)

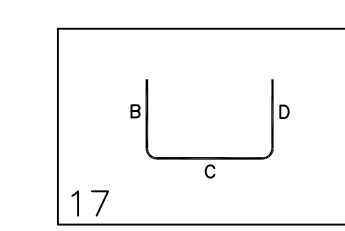


8 SECTION
 REF: S/S300, A513 (DT.03/04/22)
 SCALE: 1/2" = 1'-0"
 (@6 LOCATIONS)

SLAB ON GRADE REINFORCEMENT DETAILS
 REF: S100 (DT.03/04/22)
 SCALE: 1/6" = 1'-0"

Release Number: R1.005

Bar Mark	Qty	Size	Total Length	Type	X'	Y'	Z'	Y'	Y'	Y'	Y'	Y'	Y'	Y'
4A01	16	#4	3'-6"	17		2'-0"	1'-6"							
4A02	24	#4	2'-9"	17		2'-0"	6'-9"							



LAP SCHEDULE
 3000 PSI (CLASS-B) CASE - 1
 Per ACI :318 (12.2.2)

BAR#	LENGTHS	
	TOP	OTHERS
#3	2'-4"	1'-10"
#4	3'-1"	2'-5"
#5	3'-11"	3'-0"
#6	4'-8"	3'-7"
#7	6'-9"	5'-3"
#8	7'-9"	6'-0"
#9	8'-9"	6'-9"
#10	9'-10"	7'-7"
#11	10'-11"	8'-5"

ALL TOP BARS ARE DEFINED AS HORIZ BARS WITH MORE THAN 12" OF CONCRETE BELOW BARS.

NOTES

TYPICAL REINFORCING BAR CLEARANCE TABLE

LOCATION	MIN. COVER
SPOT FOOTING SIDE & BOTTOM	3" CLR
SPOT FOOTING TOP	2" CLR
GRADE BEAM SIDE & BOTTOM	3" CLR
GRADE BEAM TOP	2" CLR
SLAB ON GRADE TOP	1 1/2" CLR

**ALL BARS IN THIS DRAWING
 ASTM A615 GRADE 60
 BLACK UNCOATED**

LABEL NOTES:-

B	= BOTTOM
CLR	= CLEAR
CONT.	= CONTINUOUS
DWLS	= DOWELS
EL	= ELEVATION
FTG	= FOOTING
RE.	= REFER
REINF.	= REINFORCEMENT
S.O.G.	= SLAB ON GRADE
STIRR.	= STIRRUPS
T	= TOP
T/FTG	= TOP OF FOOTING
TYP.	= TYPICAL