

A/E PLEASE VERIFY CONCRETE STRENGTH & THICKNESS FOR PAVEMENT PROVIDED

LEGEND:

- 4" THICK CONCRETE SIDEWALK
3000 PSI (#3 REBAR, 1'-10" LAP)
142 #3 X 40'-0" @18" EW
FIELD CUT & ADJUST AS REQUIRED (TYP.)
- 6" THICK CONCRETE PAVEMENT
3000 PSI (#3 REBAR, 1'-10" LAP)
583 #3 X 40'-0" @18" EW
FIELD CUT & ADJUST AS REQUIRED (TYP.)

LABEL NOTES:-

- B = BOTTOM
- CLR = CLEAR
- CONT. = CONTINUOUS
- CONC. = CONCRETE
- DWLS = DOWELS
- EL = ELEVATION
- FTG = FOOTING
- RE. = REFER
- REINF. = REINFORCEMENT
- STIRRUPS = STIRRUPS
- T = TOP
- T/FTG = TOP OF FOOTING
- VERT. = VERTICAL

LAP SCHEDULE
3000 PSI (CLASS-B) CASE - 1
Per ACI 318 (12.2.2)

BAR#	LENGTHS	
	TOP	OTHERS
#3	2'-4"	1'-10"
#4	3'-1"	2'-5"
#5	3'-11"	3'-0"
#6	4'-8"	3'-7"
#7	6'-9"	5'-3"
#8	7'-9"	6'-0"
#9	8'-9"	6'-9"
#10	9'-10"	7'-7"
#11	10'-11"	8'-5"

ALL TOP BARS ARE DEFINED AS HORIZ BARS WITH MORE THAN 12" OF CONCRETE BELOW BARS.

NOTES

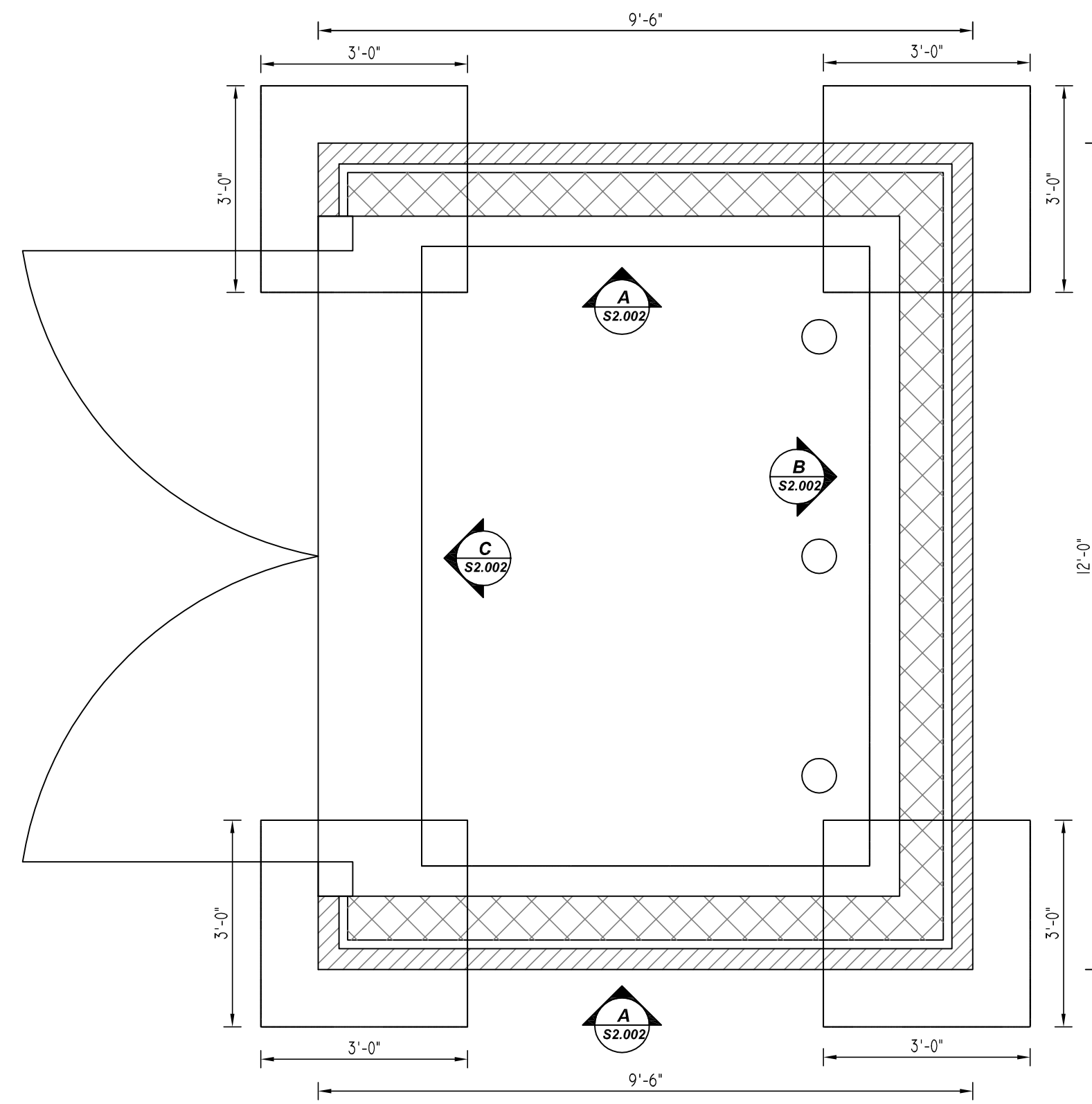
TYPICAL REINFORCING BAR CLEARANCE TABLE

LOCATION	MIN. COVER
SPOT FOOTING SIDE & BOTTOM	3" CLR
SPOT FOOTING TOP	2" CLR
GRADE BEAM SIDE & BOTTOM	3" CLR
GRADE BEAM TOP	2" CLR
SLAB ON GRADE TOP	1 1/2" CLR

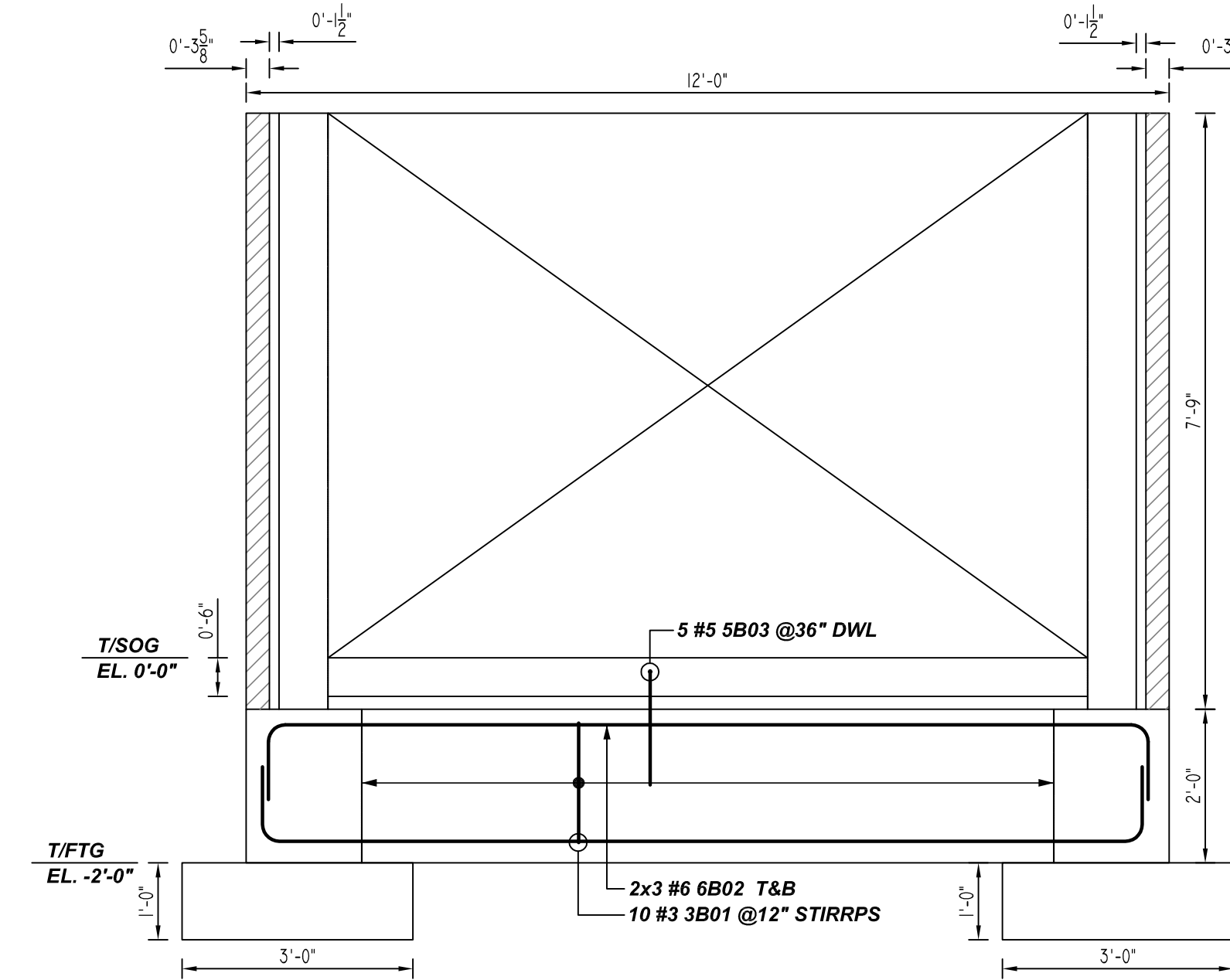
**ALL BARS IN THIS DRAWING
ASTM A615 GRADE 60
BLACK UNCOATED**

SITWORK REINFORCEMENT DETAILS
REF : AS101 (DT.03/04/22)
SCALE : 1/16" = 1'-0"

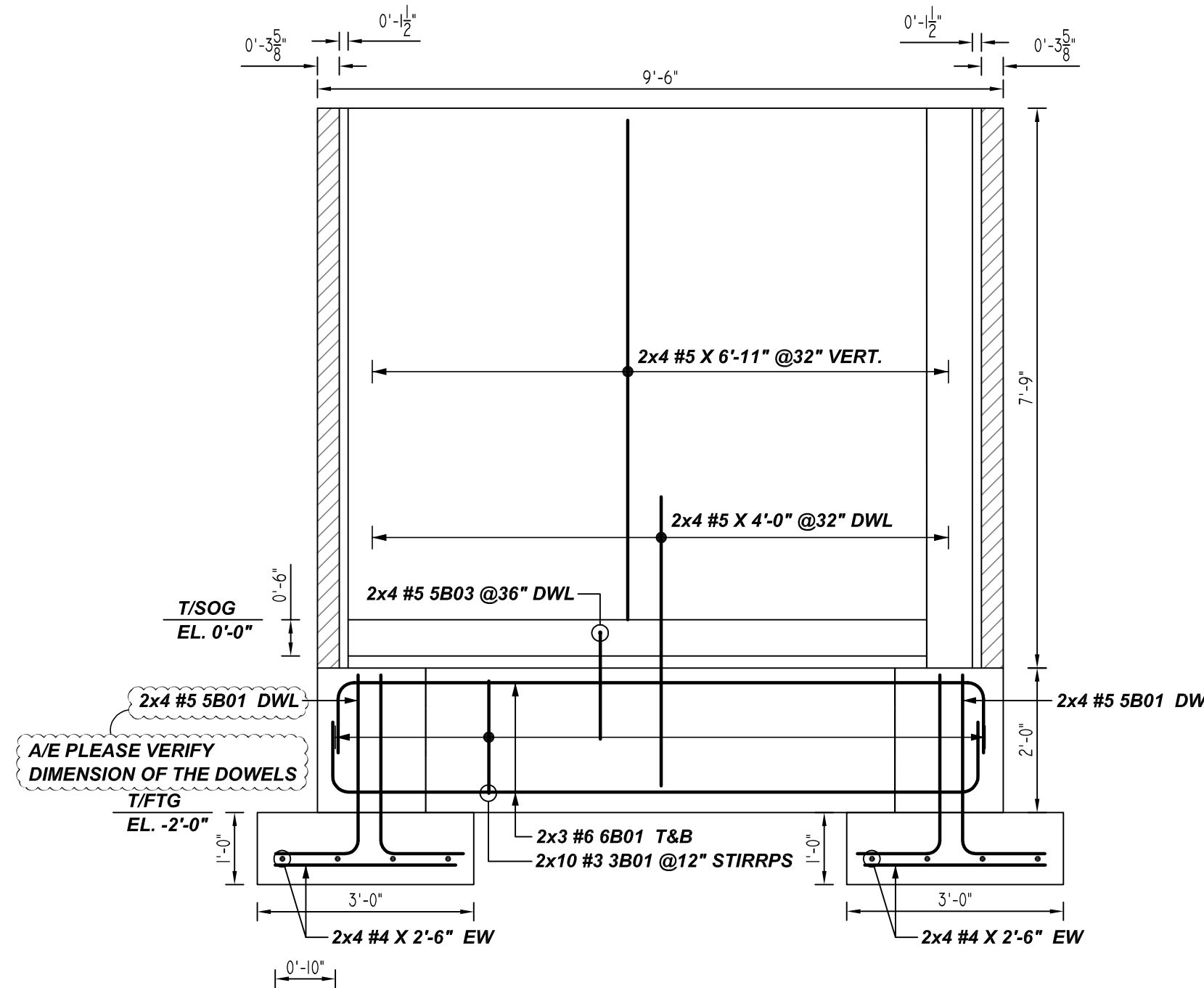
DESCRIPTION: SITE WORK REINFORCEMENT DETAILS	REV. NO	DATE	SENT FOR APPROVAL
CONTRACTOR: C3 ENVIRONMENTAL	0	09/05/23	FOR APPROVAL
ENGINEER:			
DRAWN BY: RTE/MET			



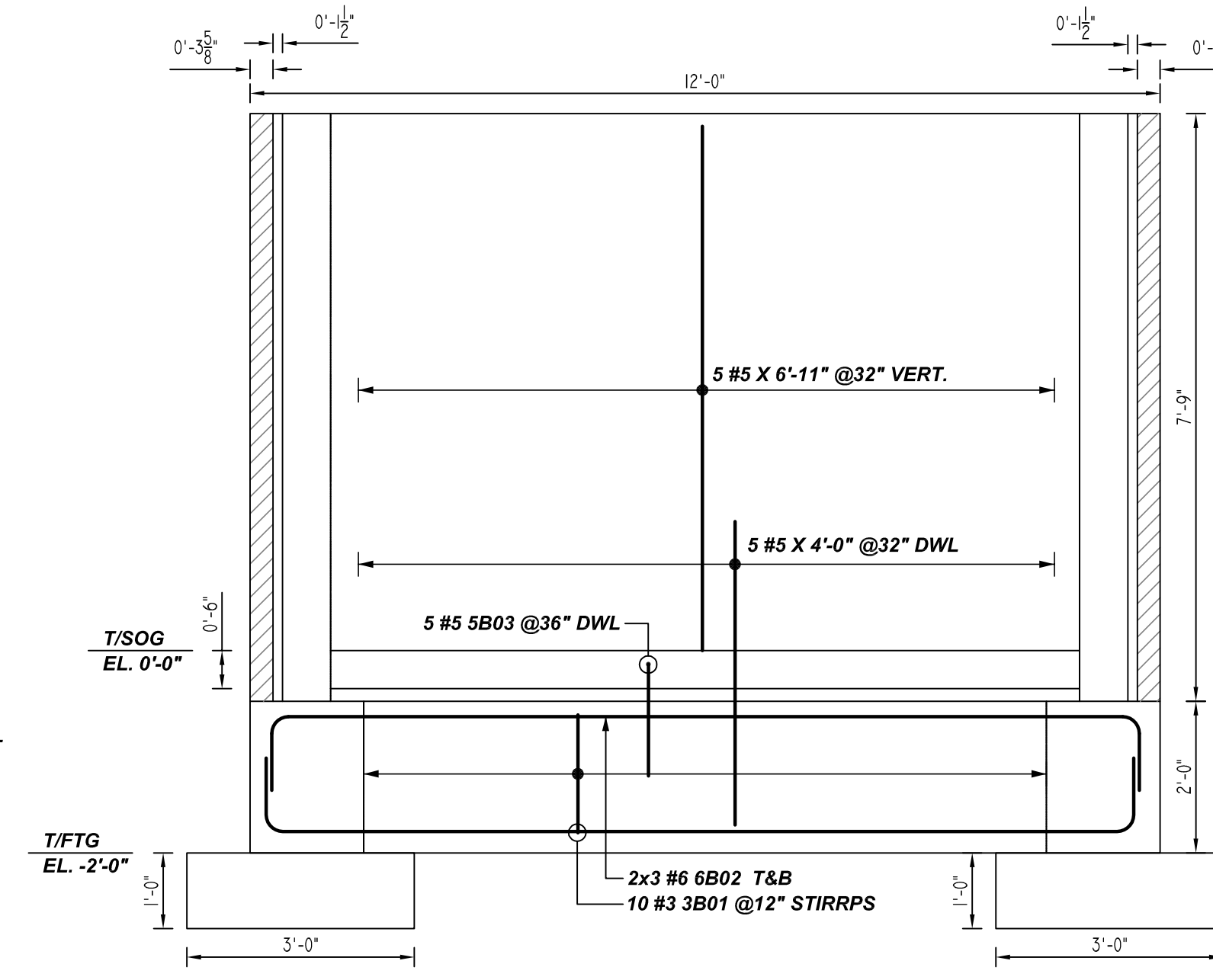
DETAIL -1
(DUMPSTER ENCLOSURE)
REF: S301, AS102 (DT.03/04/22)
SCALE: 1/2" = 1'-0"



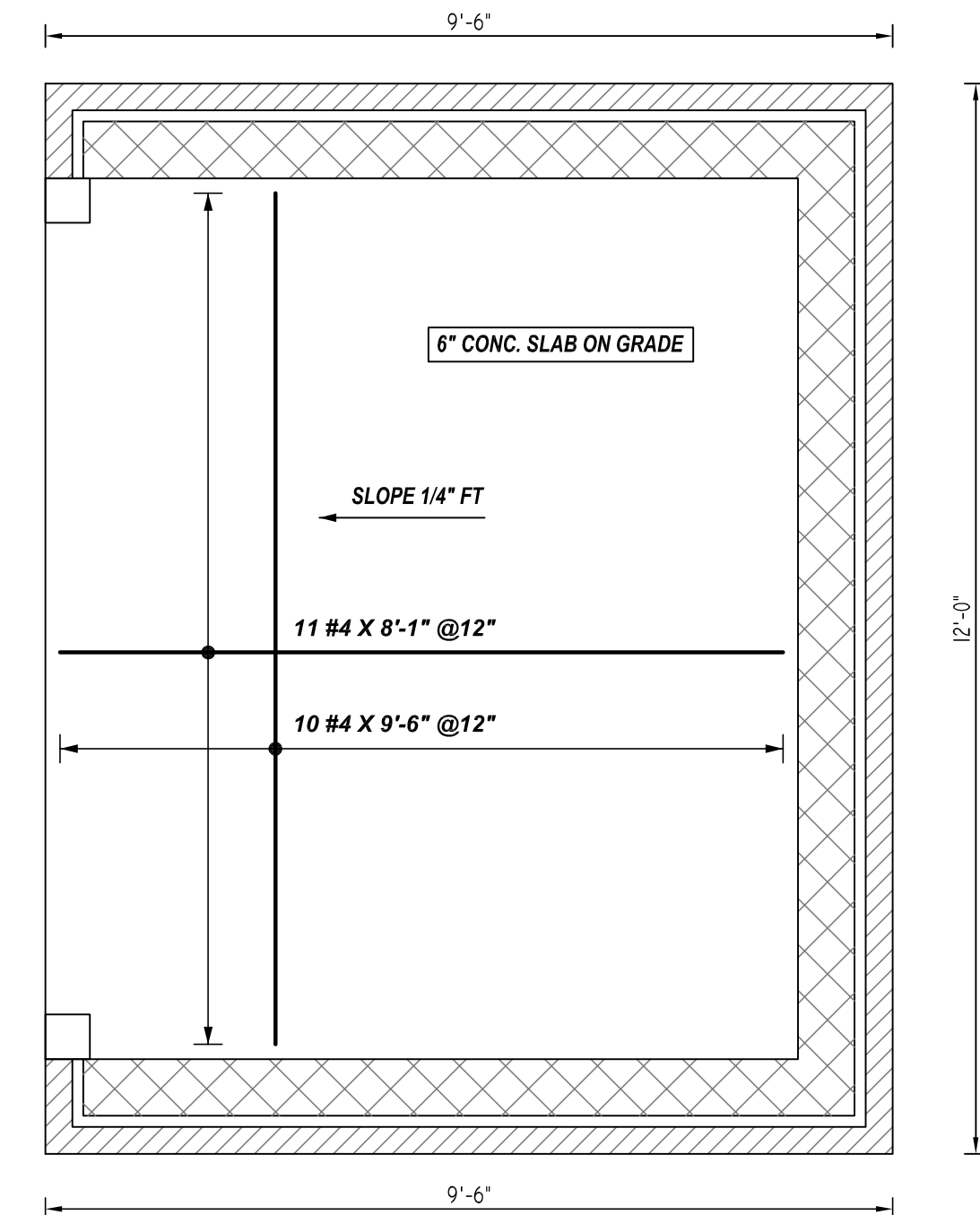
C ELEVATION
REF: S301, AS102 (DT.03/04/22)
SCALE: 1/2" = 1'-0"



A ELEVATION
REF: S301, AS102 (DT.03/04/22)
SCALE: 1/2" = 1'-0"
(@2 LOCATIONS)



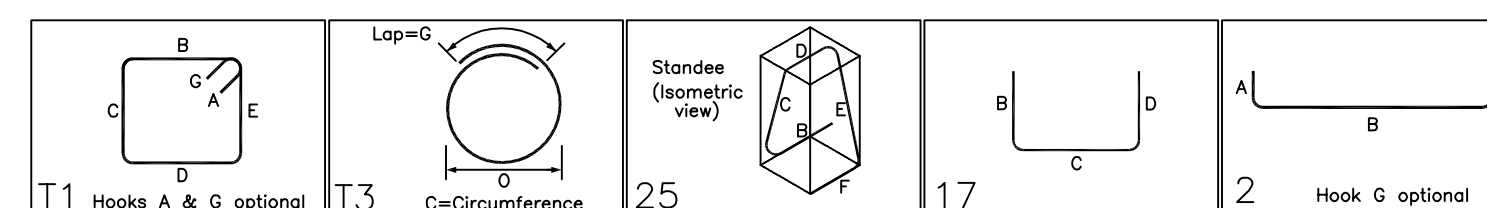
B ELEVATION
REF: S301, AS102 (DT.03/04/22)
SCALE: 1/2" = 1'-0"



DUMPSTER - SLAB ON GRADE REINFORCEMENT PLAN

REF: S301, AS102 (DT.03/04/22)
SCALE: 1/2" = 1'-0"

Bar Mark	Qty	Size	Total Length	Type	X	Y	Z	W	V	U	T	S	R	Q	P
3801	40	#3	5'-10 3/4"	T1	0'-4 1/2"	1'-7"	1'-0"	1'-7"	1'-0"	0'-4 1/2"					
3804	36	#3	7'-6 3/4"	T3		5'-2 3/4"				2'-4"					
4801	24	#4	7'-5 3/4"	T5		1'-7"	1'-4 1/2"	1'-7"	1'-4 1/2"	1'-7"	1'-4"			0'-8"	
5803	16	#5	3'-5"	T7		2'-0"	1'-4"								
5805	32	#5	5'-4"	T9		4'-8"	1'-0"								
5801	16	#5	3'-8"	T11		2'-8"	1'-2"								
6802	12	#6	13'-5"	T13	1'-0"	11'-6"				1'-0"					
6801	12	#6	11'-0"	T15	1'-0"	9'-0"				1'-0"					



- LABEL NOTES:-**
- B = BOTTOM
 - CLR = CLEAR
 - CONT. = CONTINUOUS
 - CONC. = CONCRETE
 - DWLS = DOWELS
 - EL = ELEVATION
 - FTG = FOOTING
 - RE. = REFER
 - REINF. = REINFORCEMENT
 - STIRRPS = STIRRUPS
 - T = TOP
 - T/FTG = TOP OF FOOTING
 - VERT. = VERTICAL

LAP SCHEDULE
3000 PSI (CLASS-B) CASE - 1
Per ACI :318 (12.2.2)

BAR#	LENGTHS	
	TOP	OTHERS
#3	2'-4"	1'-10"
#4	3'-1"	2'-5"
#5	3'-11"	3'-0"
#6	4'-8"	3'-7"
#7	6'-9"	5'-3"
#8	7'-9"	6'-0"
#9	8'-9"	6'-9"
#10	9'-10"	7'-7"
#11	10'-11"	8'-5"

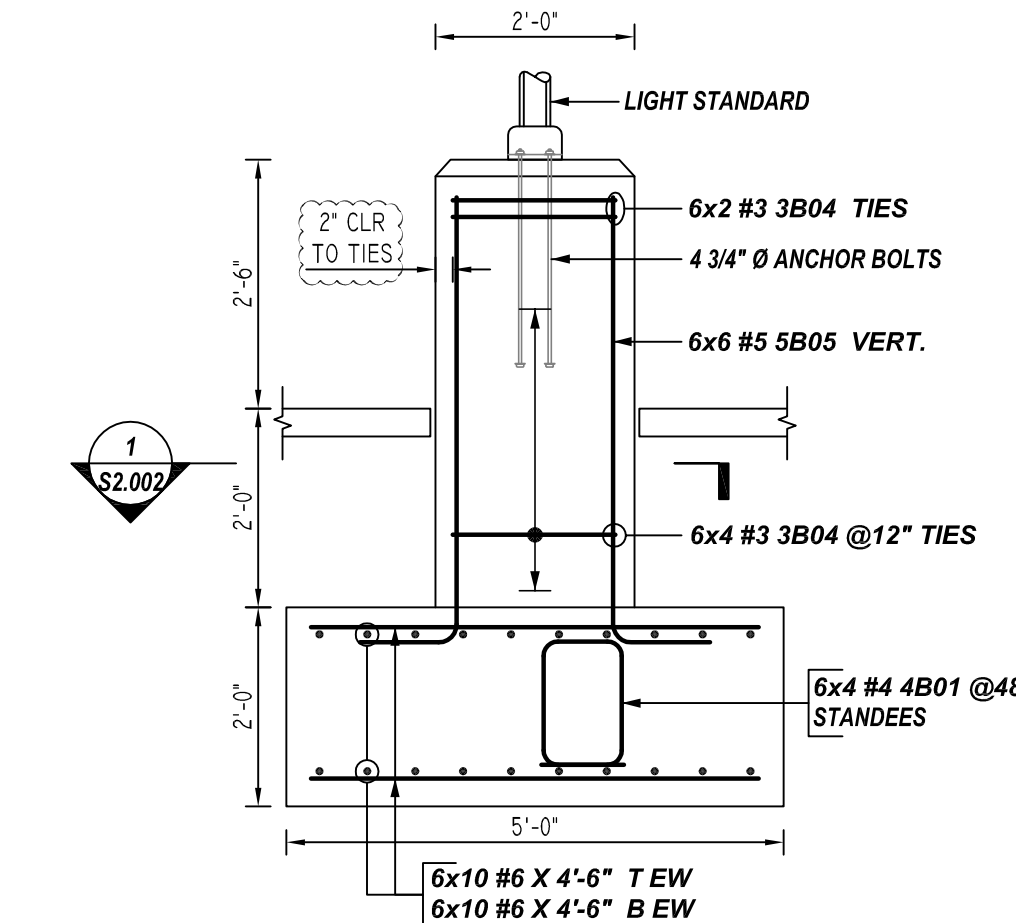
ALL TOP BARS ARE DEFINED AS HORIZ BARS WITH MORE THAN 12" OF CONCRETE BELOW BARS.

NOTES

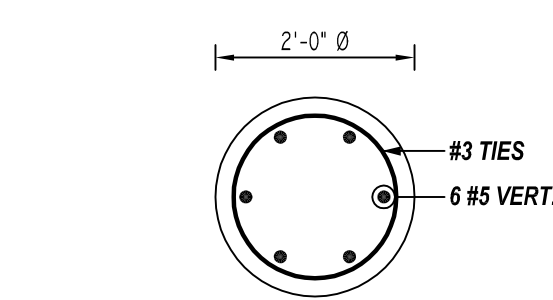
TYPICAL REINFORCING BAR CLEARANCE TABLE

LOCATION	MIN. COVER
SPOT FOOTING SIDE & BOTTOM	3" CLR
SPOT FOOTING TOP	2" CLR
GRADE BEAM SIDE & BOTTOM	3" CLR
GRADE BEAM TOP	2" CLR
SLAB ON GRADE TOP	1 1/2" CLR

**ALL BARS IN THIS DRAWING
ASTM A615 GRADE 60
BLACK UNCOATED**



LIGHT POLE DETAIL
REF: S600, AS101 (DT.03/04/22)
SCALE: 1/2" = 1'-0"
(@6 LOCATIONS)
A/E PLEASE VERIFY NUMBER OF LIGHT POLE LOCATIONS



1 SECTION
REF: S301, AS102 (DT.03/04/22)
SCALE: 1/2" = 1'-0"
(@2 LOCATIONS)

DESCRIPTION: SITE WORK REINFORCEMENT DETAILS	REV. NO	DATE	SENT FOR APPROVAL
CONTRACTOR: C3 ENVIRONMENTAL	0	09/05/23	
ENGINEER:			
DRAWN BY: RTE/MET			