

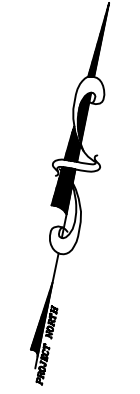
**LAP SCHEDULE**

SIZE	4000 PSI	
	TOP	OTHERS
#3	24"	19"
#4	32"	25"
#5	40"	31"
#6	48"	37"
#7	70"	54"
#8	80"	62"
#9	91"	70"
#10	102"	79"
#11	113"	87"

**TYPICAL REINFORCING BAR CLEARANCE TABLE**

LOCATION	MIN. COVER
MAT TOP & BOTTOM	3" CLR
MAT SIDE	3" CLR
CURB TOP	2" CLR

**ALL BARS IN THIS DRAWING  
ASTM A615 GRADE 60  
BLACK UNCOATED**



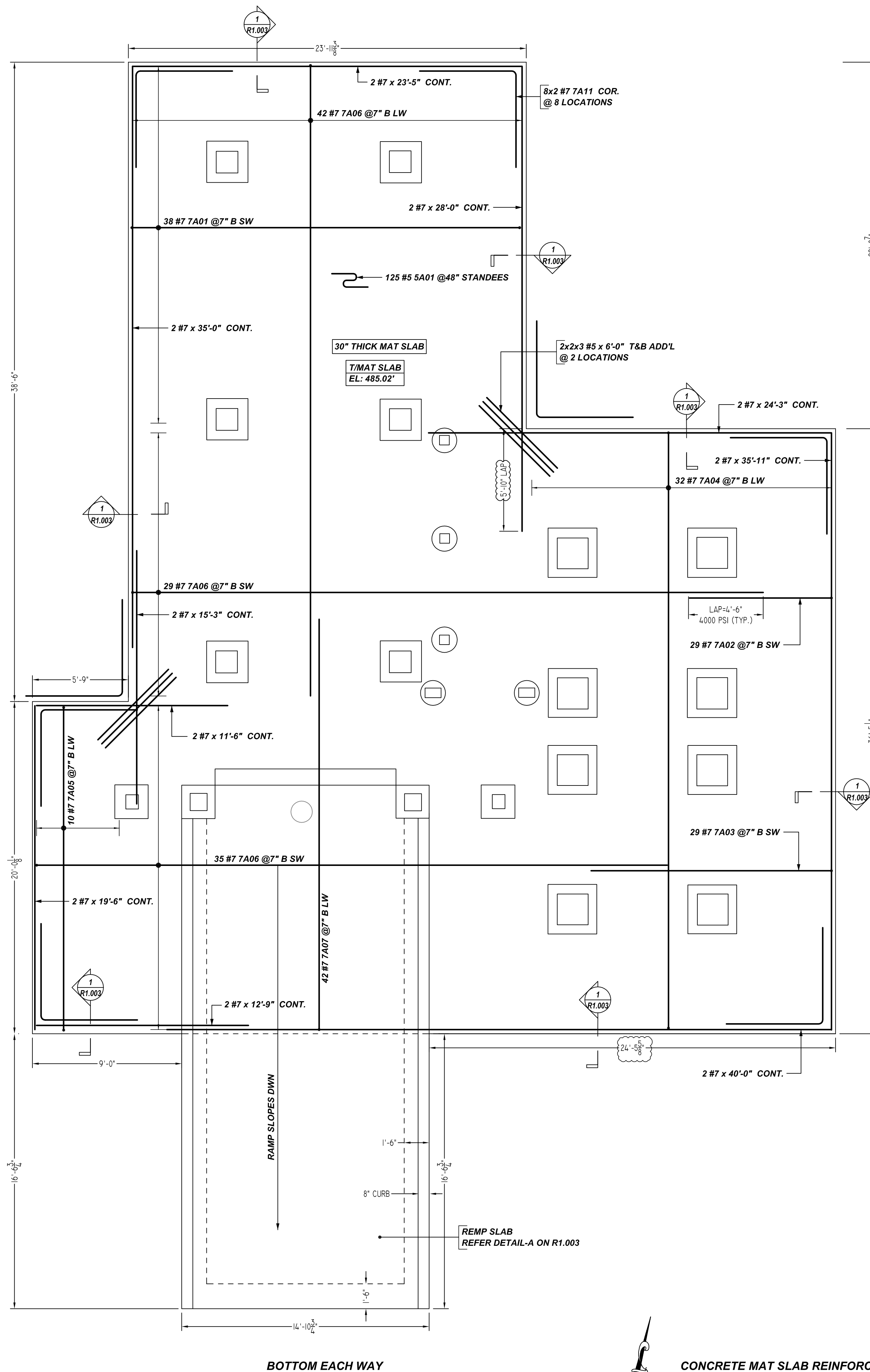
**BATCH PLANT FOUNDATION LAYOUT**  
SCALE - 1/4"=1'-0"  
REF: S2.0

**DETAIL-A  
REFER DWG: R1.003**

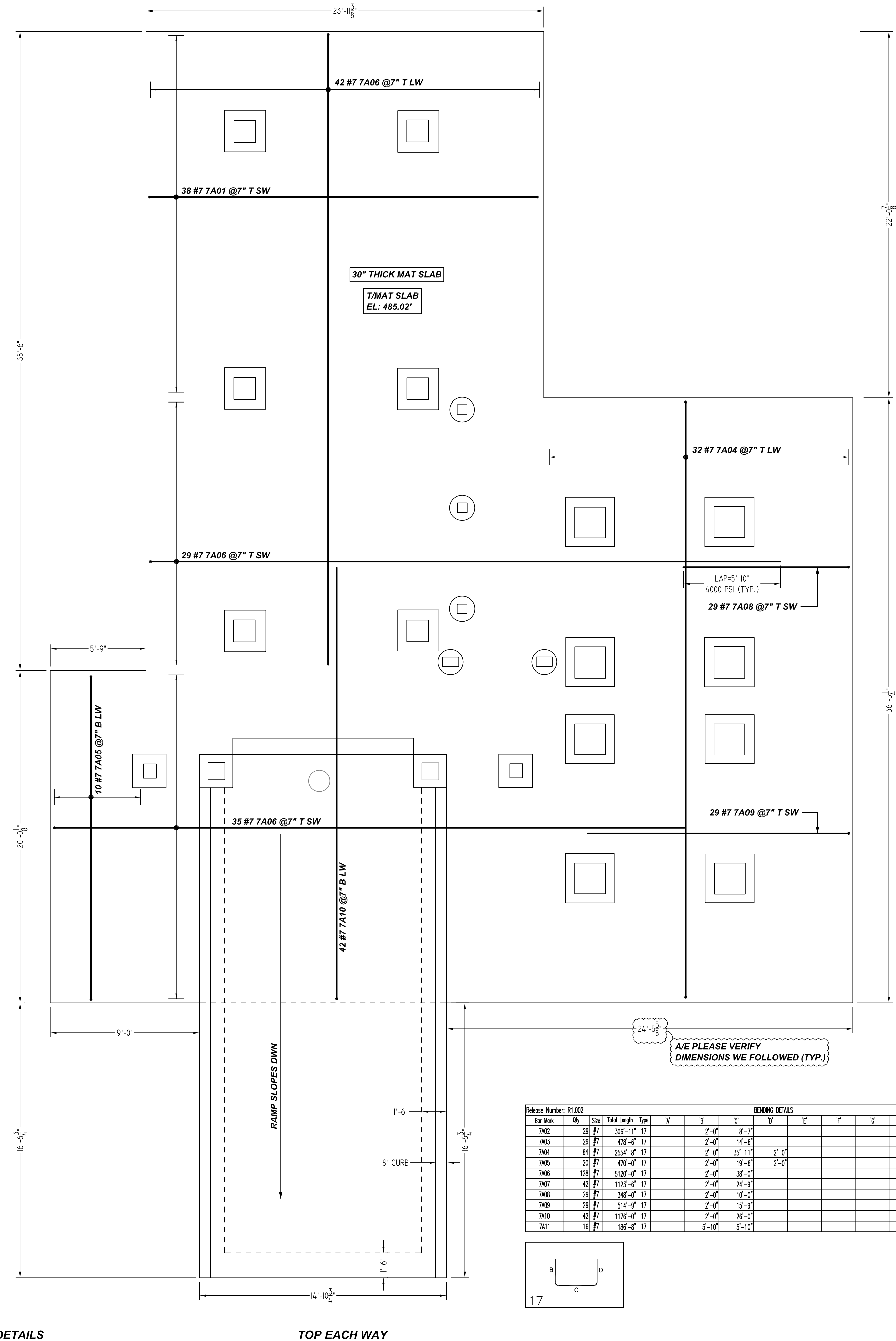
*A/E PLEASE VERIFY DIMENSIONS WE FOLLOWED (TYP.)*

DESCRIPTION: BATCH PLANT FOUNDATION	REV NO	DATE	SENT FOR APPROVAL
CONTRACTOR: GK HALL	0	12/07/2022	
ENGINEER: L.M.SWAYZE ENGINEERS, PLLC			
DRAWN BY: BCS			

**R1.001**  
**D22474**



**BOTTOM EACH WAY**



**TOP EACH WAY**

**CONCRETE MAT SLAB REINFORCEMENT DETAILS**

SCALE - 1/4"=1'-0"  
REF:S2.0

**LAP SCHEDULE**

SIZE	4000 PSI	
	TOP	OTHERS
#3	24"	19"
#4	32"	25"
#5	40"	31"
#6	48"	37"
#7	70"	54"
#8	80"	62"
#9	91"	70"
#10	102"	79"
#11	113"	87"

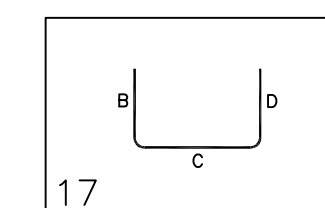
**TYPICAL REINFORCING BAR CLEARANCE TABLE**

LOCATION	MIN. COVER
MAT TOP & BOTTOM	3" CLR
MAT SIDE	3" CLR
CURB TOP	2" CLR

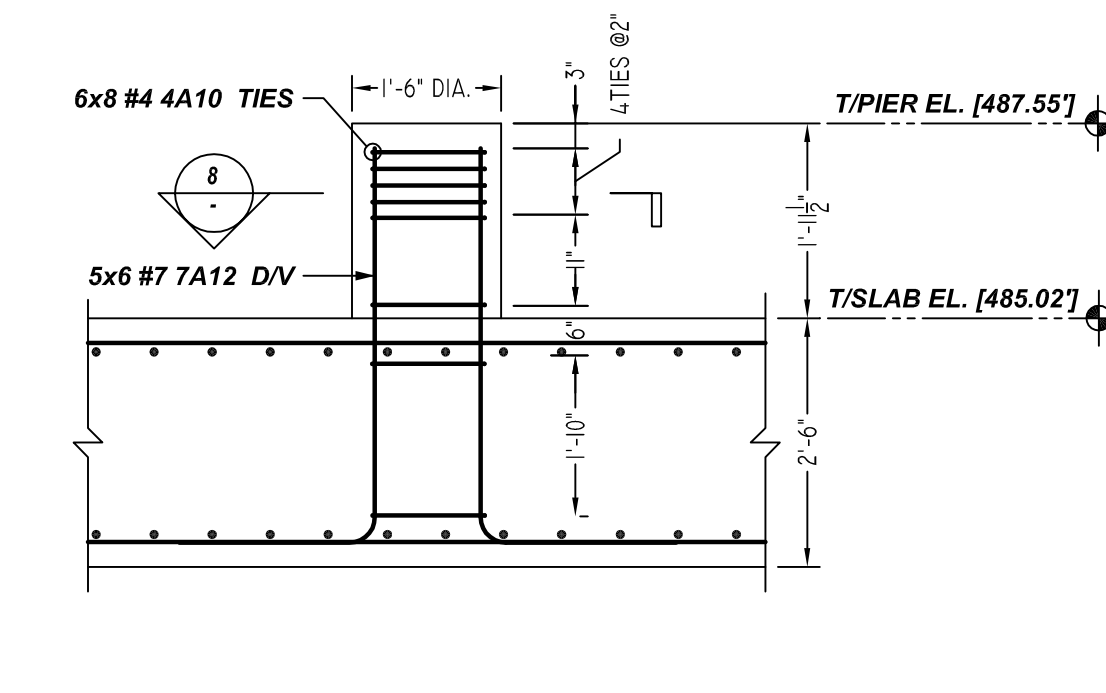
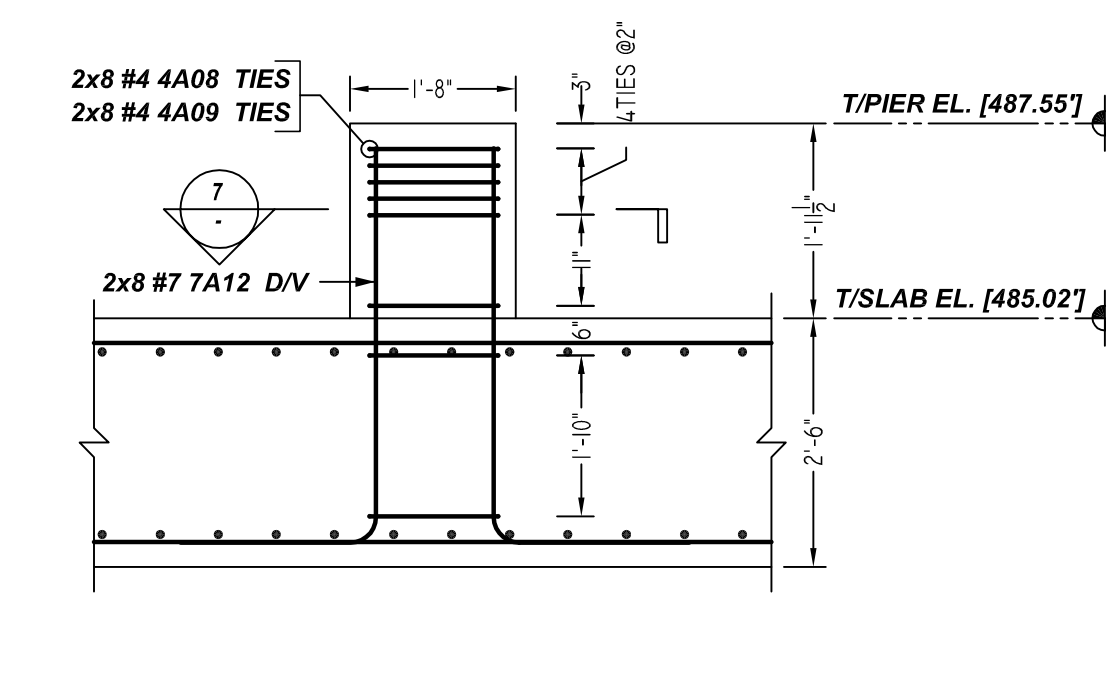
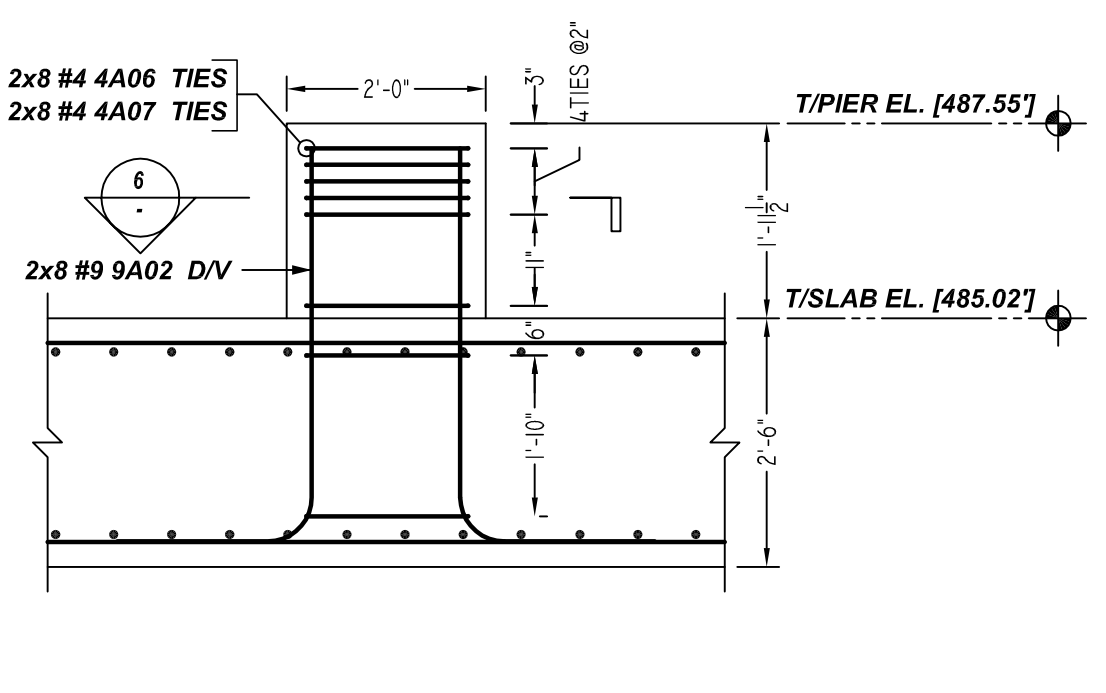
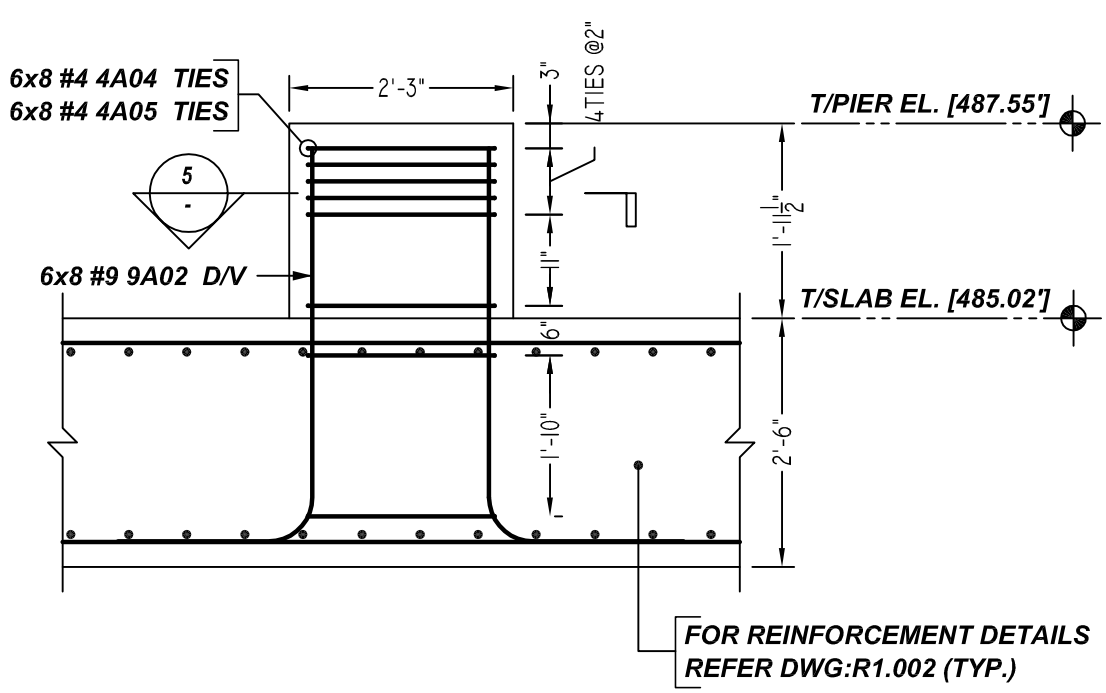
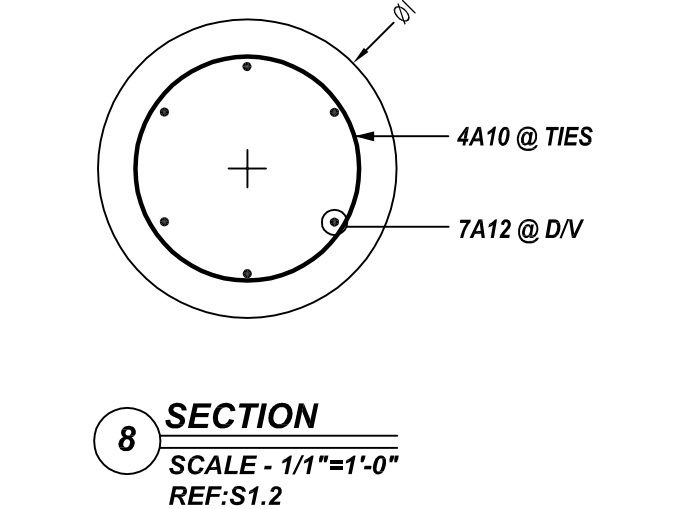
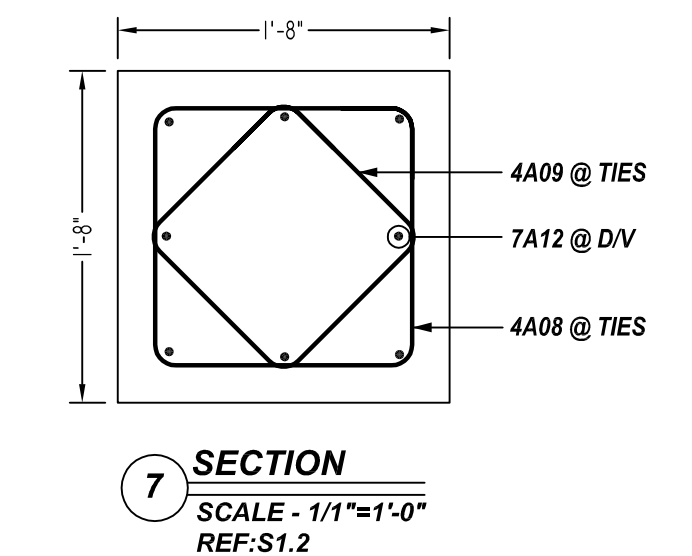
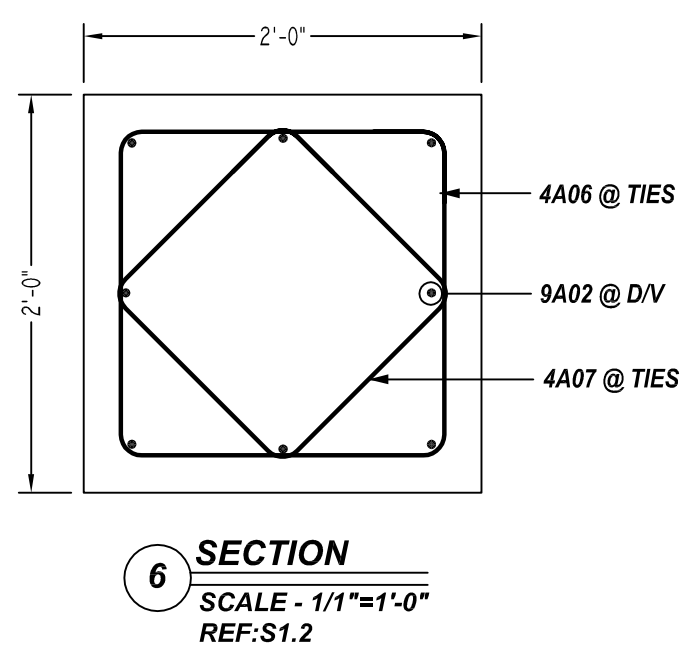
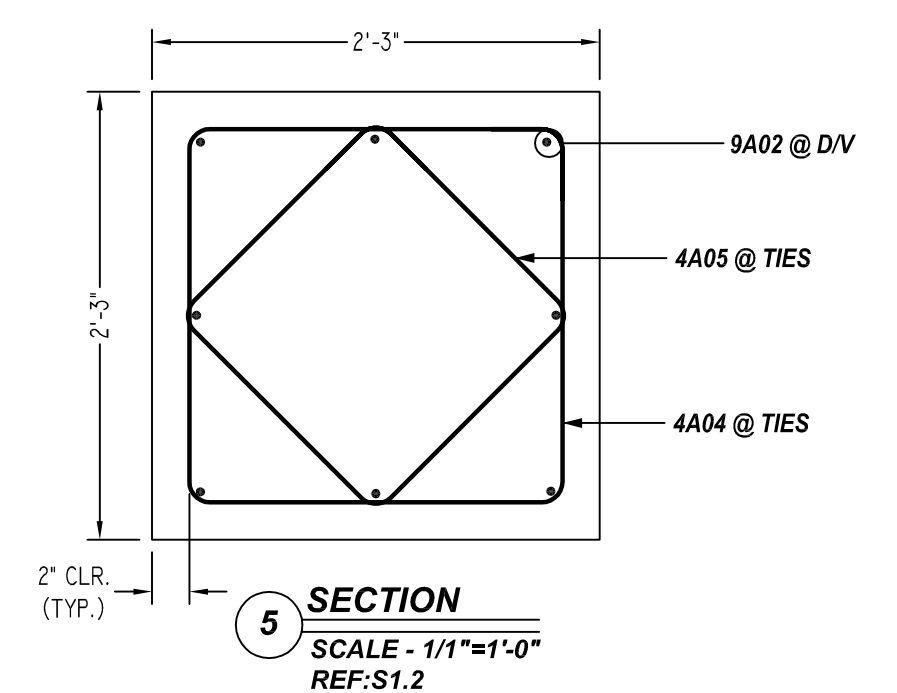
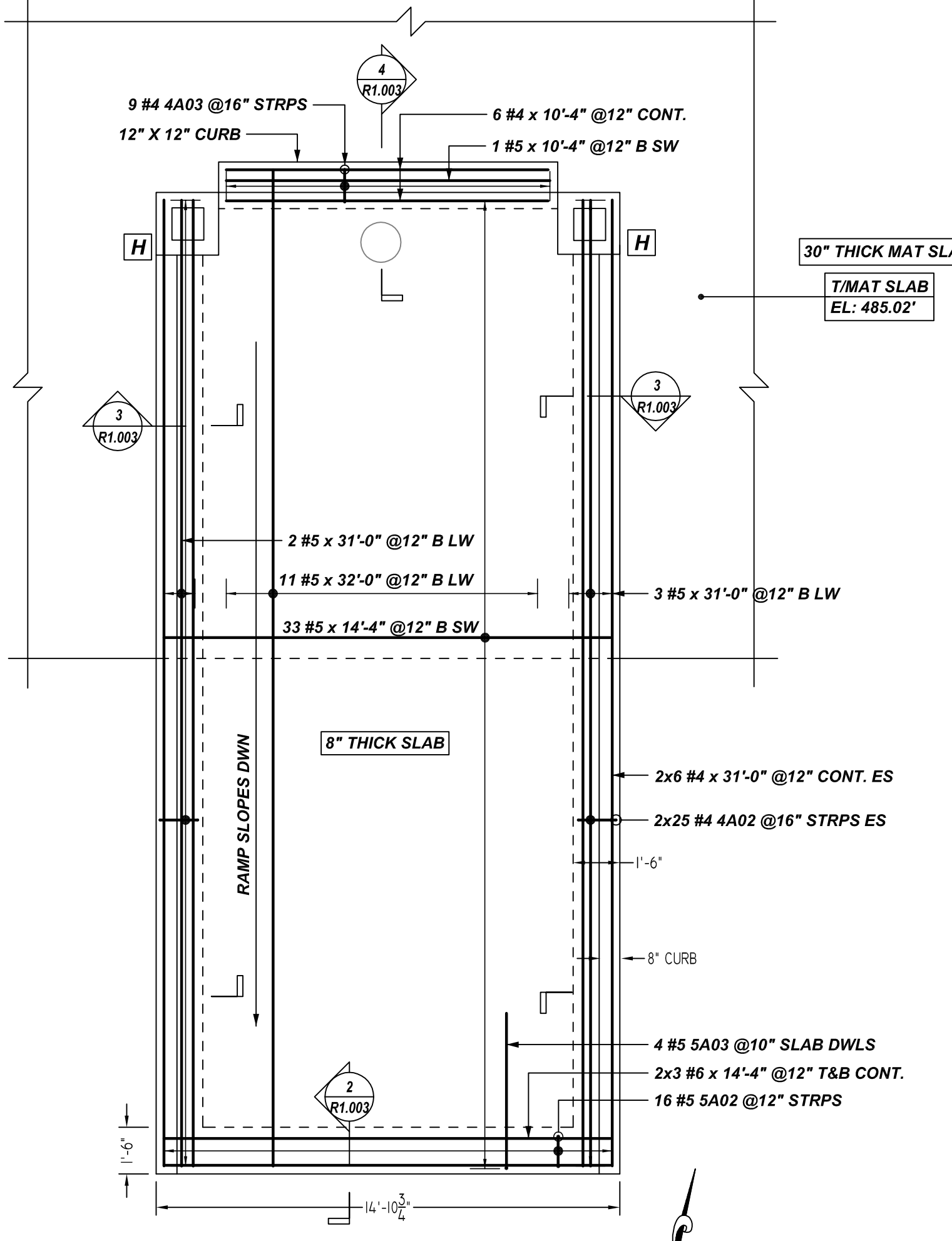
**ALL BARS IN THIS DRAWING  
ASTM A615 GRADE 60  
BLACK UNCOATED**

Reference Number: R1.002

Bar Mark	Qty	Size	Total Length	Type	BENDING DETAILS																		
					X	Y	Z	V	W	U	T	S	R	Q	P								
7A02	29	#7	306'-11"	17			2'-0"	8'-7"															
7A03	29	#7	478'-6"	17			2'-0"	14'-6"															
7A04	64	#7	2554'-8"	17			2'-0"	35'-11"	2'-0"														
7A05	20	#7	470'-0"	17			2'-0"	19'-6"	2'-0"														
7A06	128	#7	5120'-0"	17			2'-0"	38'-0"															
7A07	42	#7	1125'-6"	17			2'-0"	24'-9"															
7A08	29	#7	348'-0"	17			2'-0"	19'-0"															
7A09	29	#7	514'-0"	17			2'-0"	15'-0"															
7A10	42	#7	1176'-0"	17			2'-0"	28'-0"															
7A11	16	#7	186'-8"	17			5'-10"	5'-10"															



DESCRIPTION: BATCH PLANT FOUNDATION	REV NO	DATE	SENT FOR
CONTRACTOR: GK HALL	0	12/07/2023	FOR APPROVAL
ENGINEER: L.M. SWAYZE ENGINEERS, PLLC			
DRAWN BY: BCS			



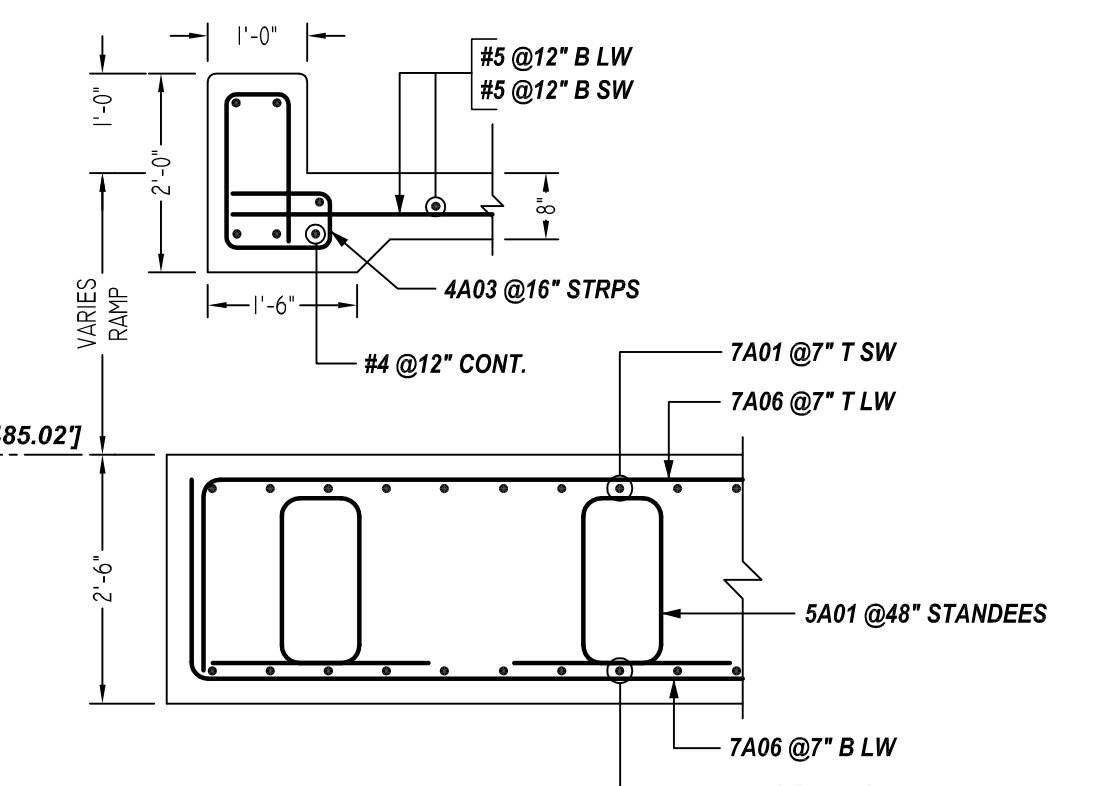
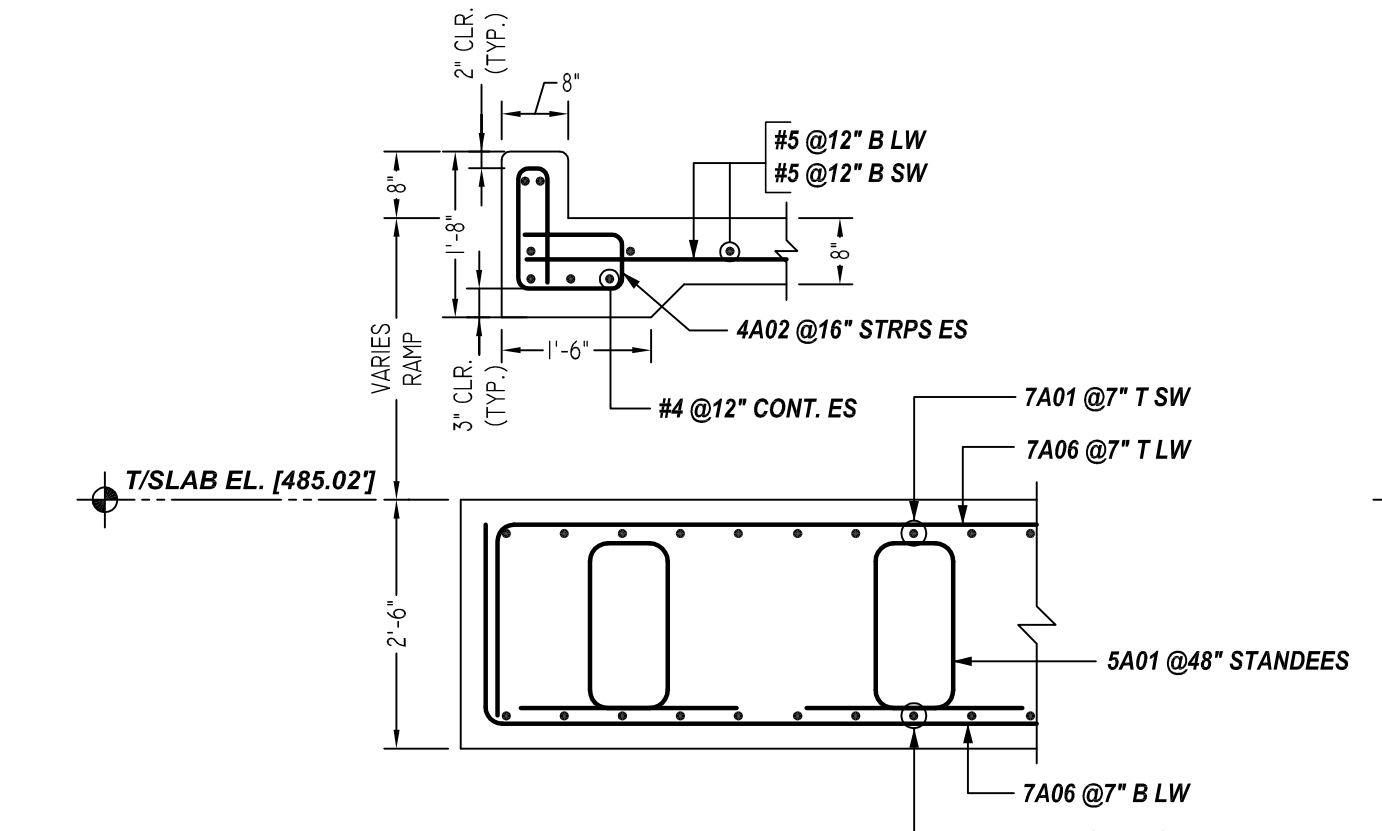
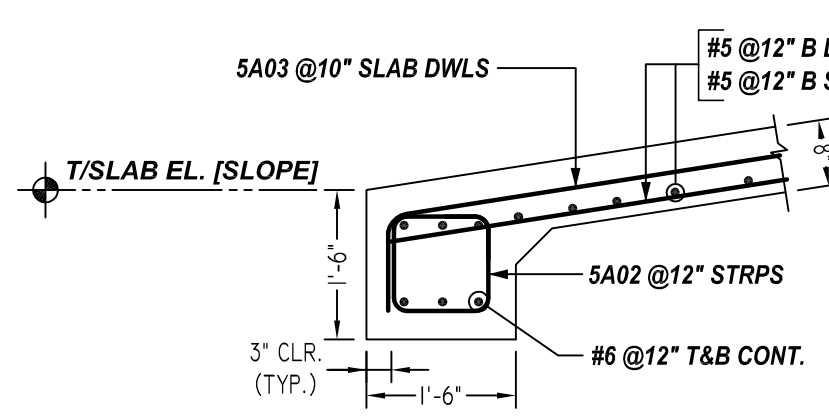
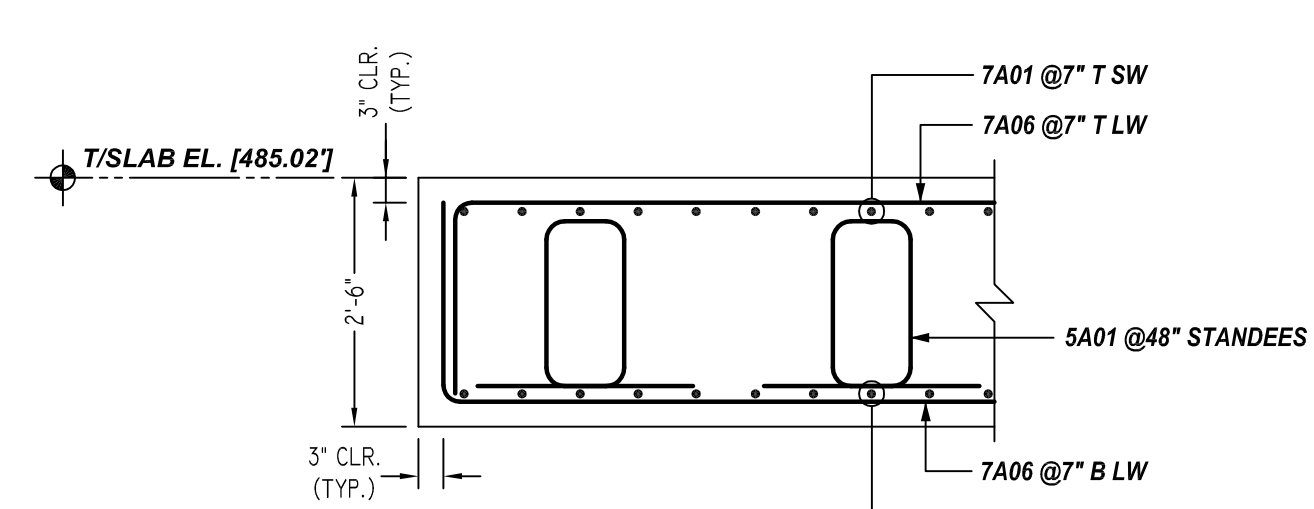
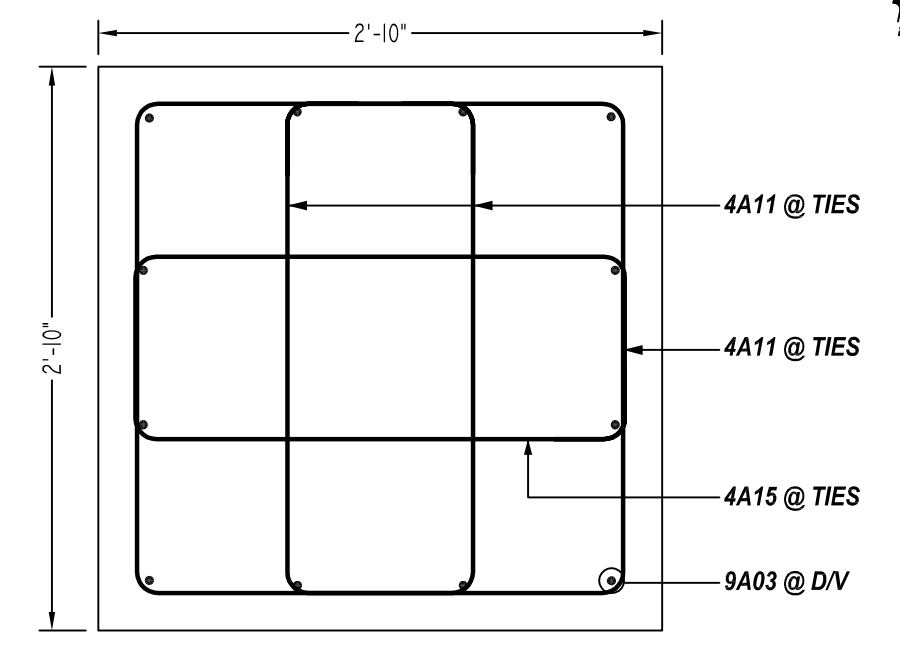
**COLUMN-D**  
SCALE - 1/2"=1'-0"  
REF:S2.0  
@2 LOCATIONS

**COLUMN-H**  
SCALE - 1/2"=1'-0"  
REF:S2.0  
@2 LOCATIONS

**COLUMN-E**  
SCALE - 1/2"=1'-0"  
REF:S2.0  
@2 LOCATIONS

**COLUMN-C & G**  
SCALE - 1/2"=1'-0"  
REF:S2.0  
@5 LOCATIONS

**DETAIL-A**  
SCALE - 1/4"=1'-0"  
REF:S2.0

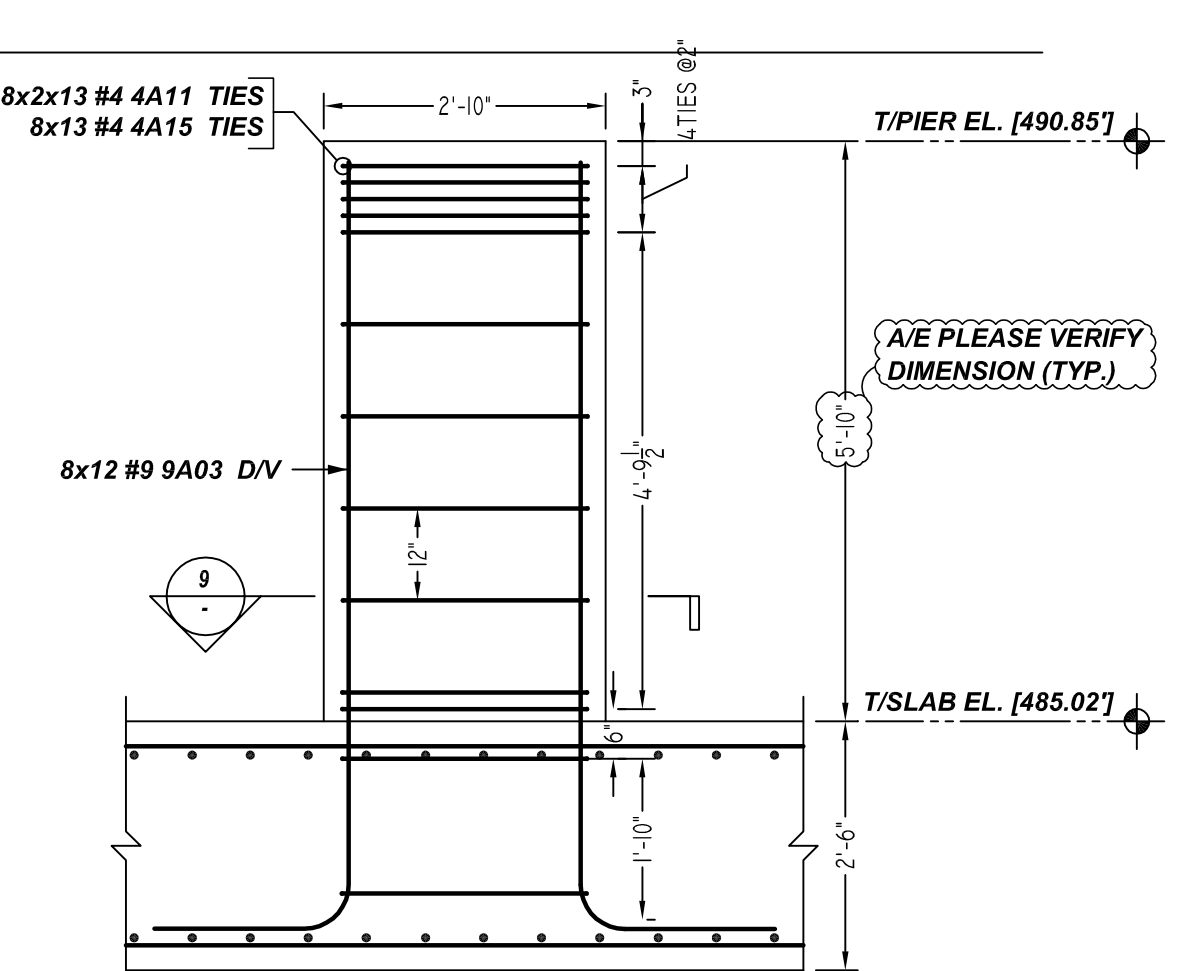


**SECTION 1**  
SCALE - 1/2"=1'-0"  
REF:1/S1.1

**SECTION 2**  
SCALE - 1/2"=1'-0"  
REF:1/S1.2

**SECTION 3**  
SCALE - 1/2"=1'-0"  
REF:7/S1.1

**SECTION 4**  
SCALE - 1/2"=1'-0"  
REF:8/S1.1



**COLUMN-F**  
SCALE - 1/2"=1'-0"  
REF:S2.0  
@8 LOCATIONS

**LAP SCHEDULE**

SIZE	4000 PSI	
	TOP	OTHERS
#3	24"	19"
#4	32"	25"
#5	40"	31"
#6	48"	37"
#7	70"	54"
#8	80"	62"
#9	91"	70"
#10	102"	79"
#11	113"	87"

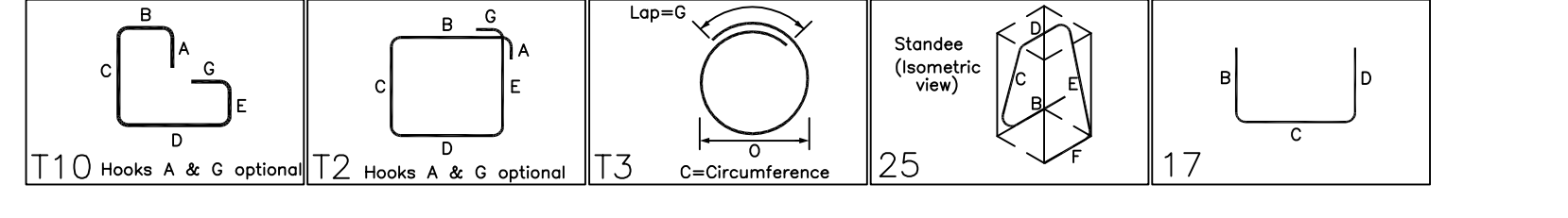
**TYPICAL REINFORCING BAR CLEARANCE TABLE**

LOCATION	MIN. COVER
MAT TOP & BOTTOM	3" CLR
MAT SIDE	3" CLR
CURB TOP	2" CLR

**ALL BARS IN THIS DRAWING  
ASTM A615 GRADE 60  
BLACK UNCOATED**

Release Number: R1.003

Bar Mark	Qty	Size	Total Length	Type	X	Y	Z	W	V	U	T	S	R	Q	P	O	N	M	L	K	J	I	H	G	F	E	D	C	B	A	
4A02	50	#4	270'-10"	T10	1'-2"	0'-4"	1'-3"	1'-1"	0'-7"	1'-0"																					
4A03	30	#4	57'-3"	T10	1'-5"	0'-5"	1'-7"	1'-1"	0'-7"	1'-0"																					
4A04	48	#4	494'-0"	T2	0'-4 1/2"	1'-11"	1'-11"	1'-11"	1'-11"	0'-4 1/2"																					
4A05	48	#4	312'-0"	T2	0'-4 1/2"	1'-5 1/2"	1'-5 1/2"	1'-5 1/2"	1'-5 1/2"	0'-4 1/2"																					
4A06	16	#4	118'-0"	T2	0'-4 1/2"	1'-8"	1'-8"	1'-8"	1'-8"	0'-4 1/2"																					
4A07	16	#4	92'-0"	T2	0'-4 1/2"	1'-3"	1'-3"	1'-3"	1'-3"	0'-4 1/2"																					
4A08	16	#4	97'-4"	T2	0'-4 1/2"	1'-4"	1'-4"	1'-4"	1'-4"	0'-4 1/2"																					
4A09	16	#4	77'-4"	T2	0'-4 1/2"	1'-0 1/2"	1'-0 1/2"	1'-0 1/2"	1'-0 1/2"	0'-4 1/2"																					
4A10	48	#4	207'-0"	T3			3'-8"			0'-8"																					
4A11	208	#4	1915'-4"	T2	0'-4 1/2"	1'-8 1/2"	2'-6"	1'-8 1/2"	2'-6"	0'-4 1/2"																					
4A15	104	#4	797'-4"	T2	0'-4 1/2"	0'-11 1/2"	2'-6"	0'-11 1/2"	2'-6"	0'-4 1/2"																					
5A01	125	#5	915'-0"	T5			1'-5"	1'-5"	0'-10 1/2"	1'-5"																					
5A02	16	#5	78'-8"	T2	0'-5 1/2"	1'-0"	1'-0"	1'-0"	1'-0"	0'-5 1/2"																					
5A03	4	#5	24'-0"	T7			5'-0"																								
7A01	76	#7	2083'-8"	T7			2'-0"	23'-5"	2'-0"																						
7A06	84	#7	3360'-0"	T7			2'-0"	38'-0"	2'-0"																						
7A12	46	#7	276'-0"	T7			2'-0"	4'-0"	2'-0"																						
9A02	64	#9	384'-0"	T7			2'-0"	4'-0"	2'-0"																						
9A03	96	#9	936'-0"	T7			2'-0"	7'-3"	2'-0"																						



REV NO	DATE	SENT FOR
0	12/07/2023	FOR APPROVAL

DESCRIPTION: BATCH PLANT FOUNDATION  
 CONTRACTOR: GK HALL  
 ENGINEER: L.M.SWAYZE ENGINEERS, PLLC  
 DRAWN BY: BCS

**R1.003**

**D22474**

