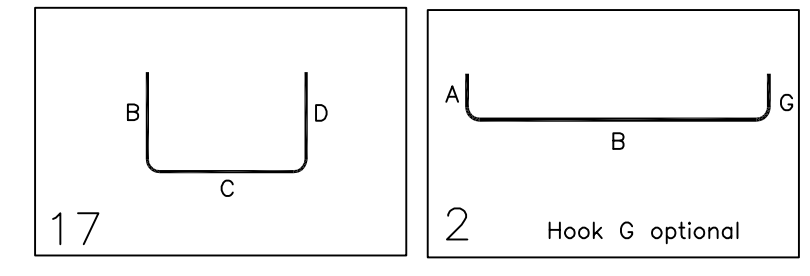


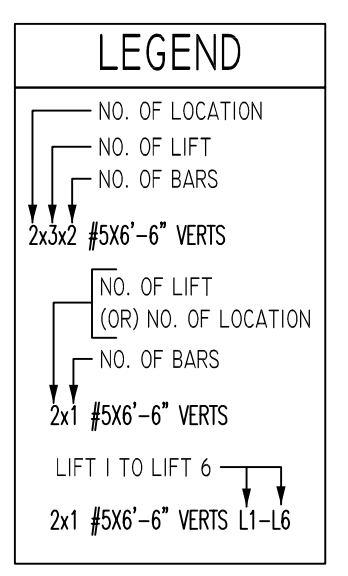
Release Number: M01

Bar Mark	Qty	Size	Total Length	Type	'A'	'B'	'C'	'D'	'E'	'F'	'G'	'H'	'I'	'J'	'K'	'L'	'M'
5A02	344	#5	8'-0"	17		4'-0"	4'-0"										
5A03	372	#5	4'-10"	2	0'-10"	4'-0"											



LAP SCHEDULE
 8" & 12" CMU

BAR#	LENGTHS
#4	24"
#5	32"
#6	39"
#7	45"



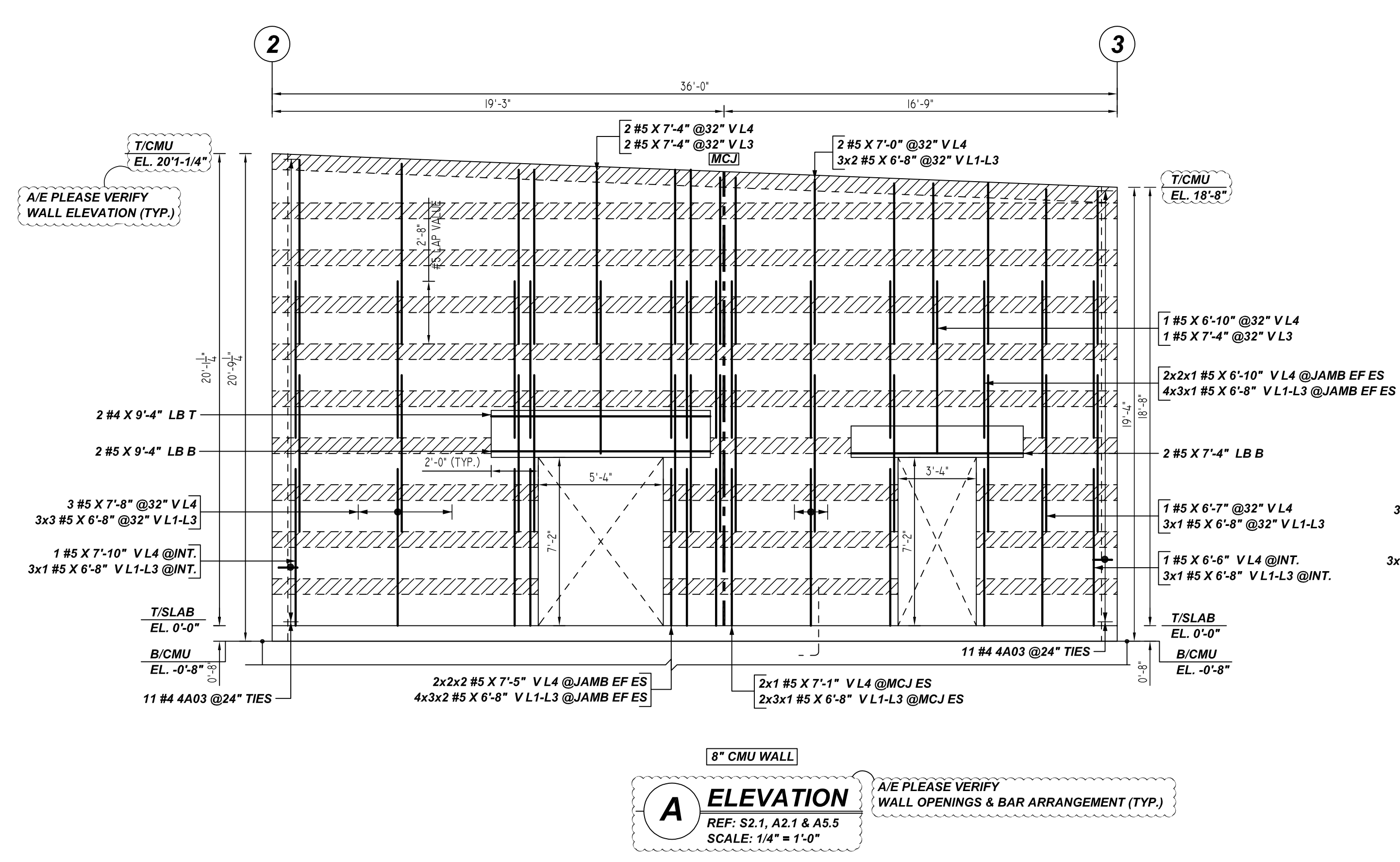
TYPICAL REINFORCING BAR CLEARANCE TABLE

LOCATION	MIN. COVER
WALL TOP & SIDE	2" CLR

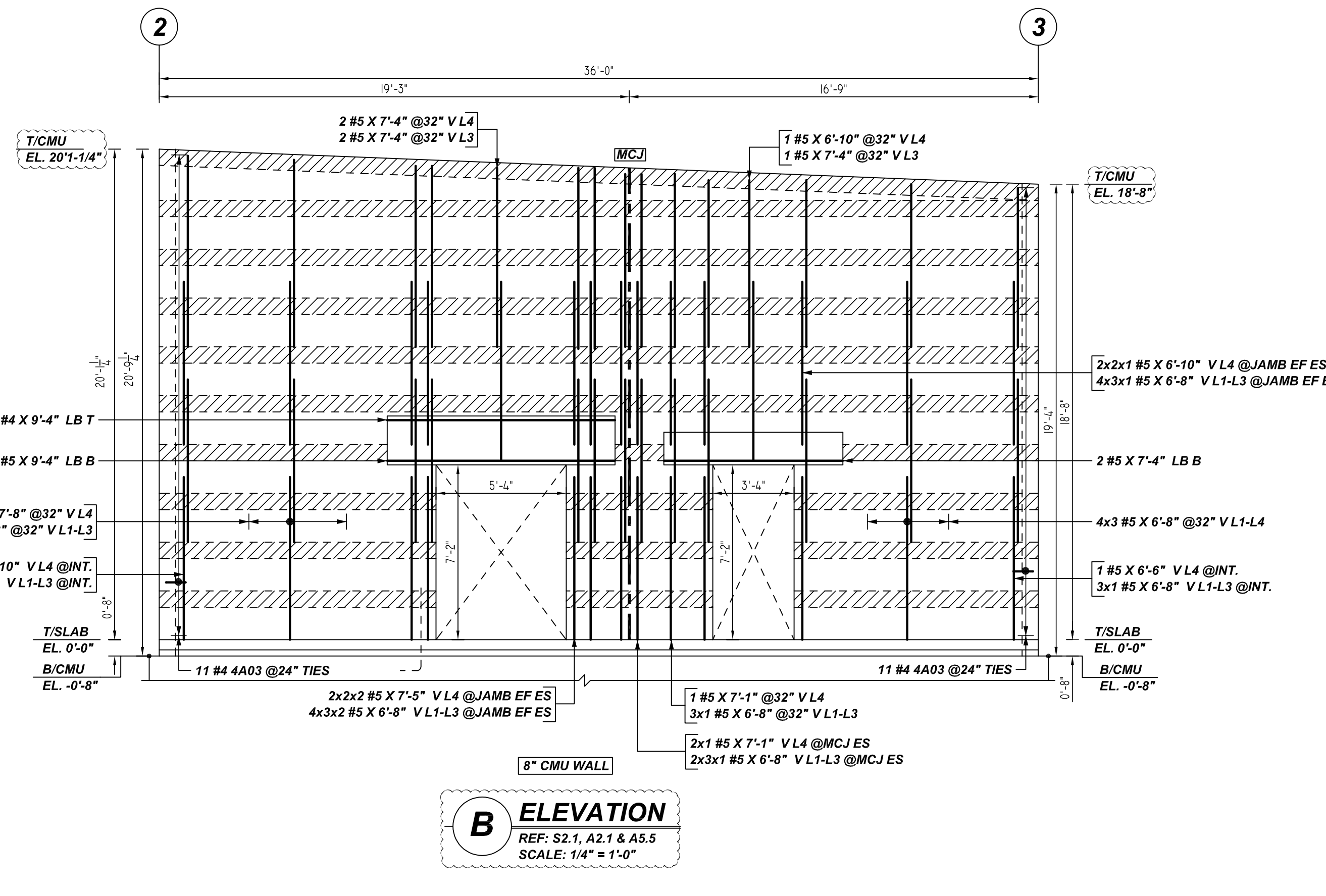
**ALL BARS IN THIS DRAWING
 ASTM A615 GRADE 60
 BLACK UNCOATED**

FOR APPROVAL

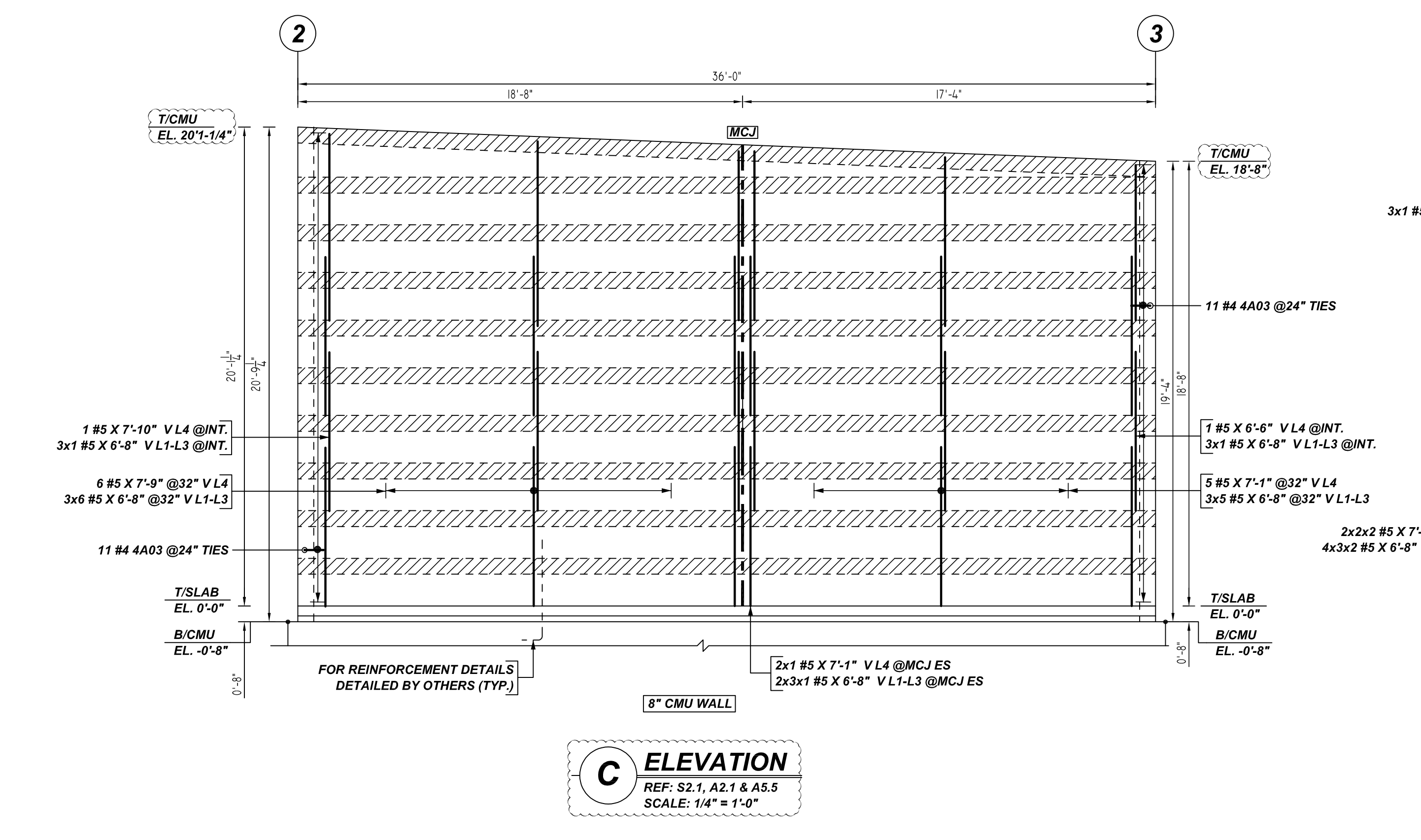
GRADE	A615/60(UNO)		
PREFIX	A		
BAR LIST NOS.	-		
REV	DESCRIPTION	ISSUED DATE	ISSUED FOR
0	IFA	07/29/2022	APPROVAL
STRUCTURE	CMU WALL LAYOUT		
FLOOR	FOUNDATION TO PARAPET		
JOB NO	-		
CUSTOMER	J. GINGER MASONRY LP		
JOB	FLOWING WELLS		
LOCATION	1440 W. PRINCE Rd, TUCSON, AZ 85705		
DRAWN	DATE	CONTROL CODE	DWG. NO.
MRS	07/29/2022	-	M01



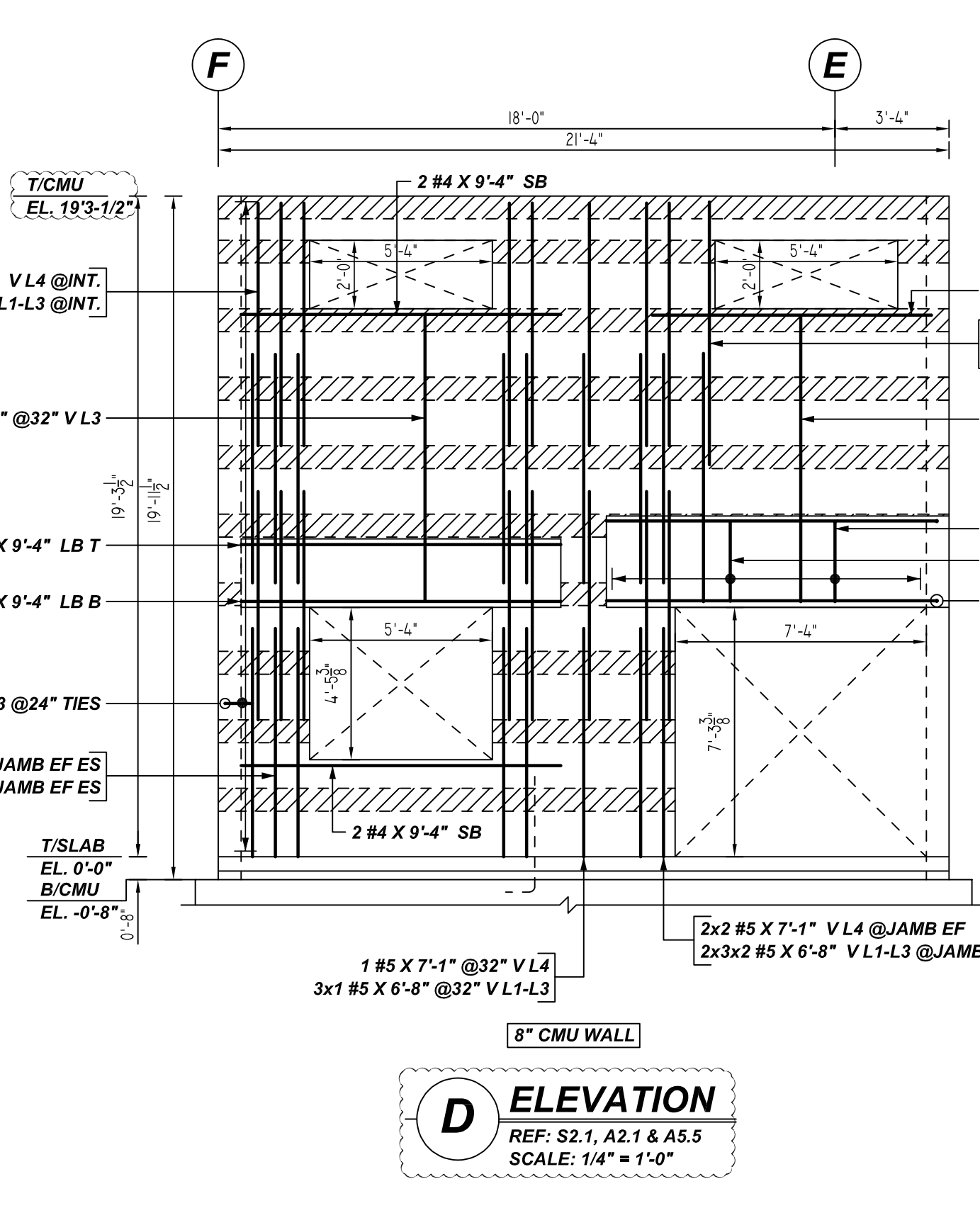
A ELEVATION
REF: S2.1, A2.1 & A5.5
SCALE: 1/4" = 1'-0"



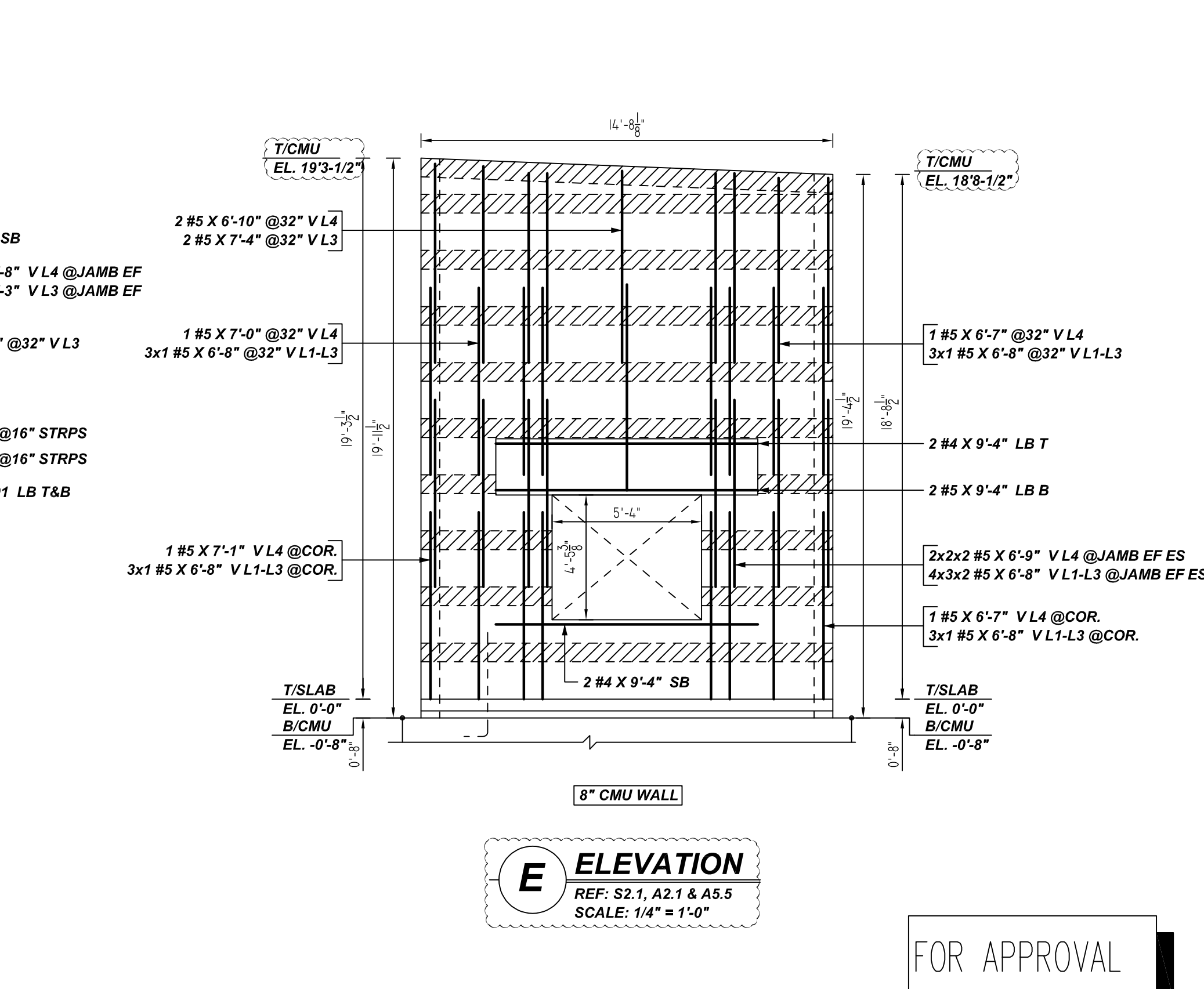
B ELEVATION
REF: S2.1, A2.1 & A5.5
SCALE: 1/4" = 1'-0"



C ELEVATION
REF: S2.1, A2.1 & A5.5
SCALE: 1/4" = 1'-0"



D ELEVATION
REF: S2.1, A2.1 & A5.5
SCALE: 1/4" = 1'-0"

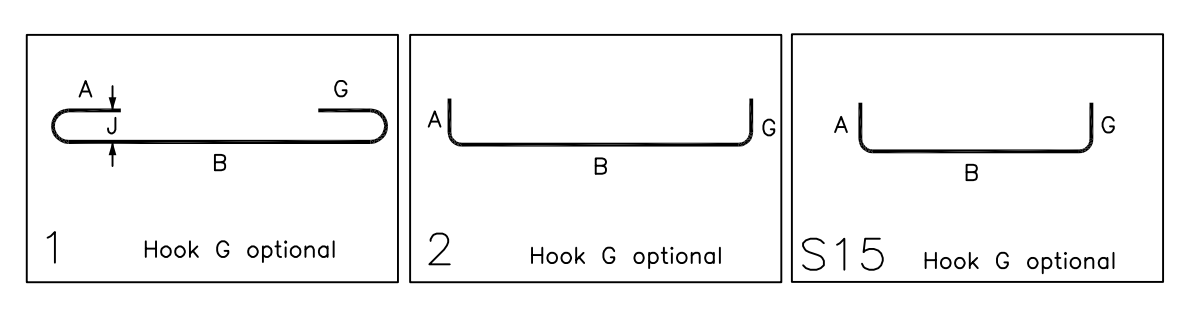


E ELEVATION
REF: S2.1, A2.1 & A5.5
SCALE: 1/4" = 1'-0"

FOR APPROVAL

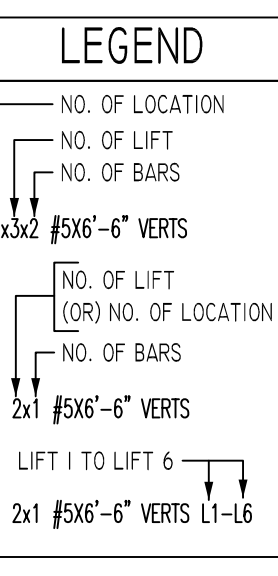
Release Number: M02

Bar Mark	Qty	Size	Total Length	Type	A'	B'	C'	D'	E'	F'	G'	H'	I'	J'	K'	L'
4A01	16	#4	2'-10"	1	0'-6"	2'-4"										
4A02	2	#4	8'-8"	2	0'-6"	8'-2"										
4A03	77	#4	1'-7"	S15	0'-4"	0'-10"										
5A01	4	#5	10'-6"	2	0'-10"	9'-8"										



LAP SCHEDULE
8" & 12" CMU

BAR #	LENGTHS
#4	24"
#5	32"
#6	39"
#7	45"

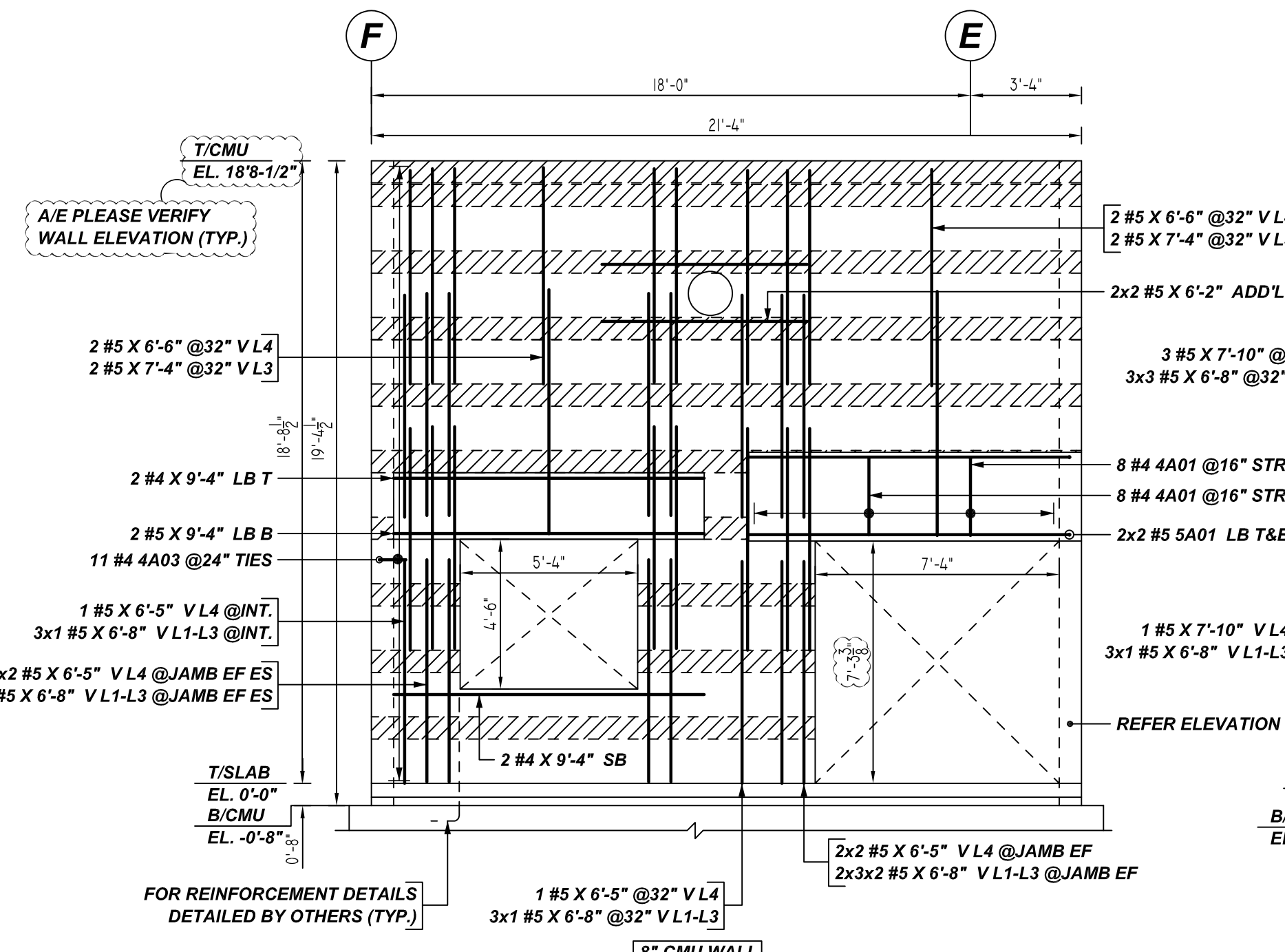
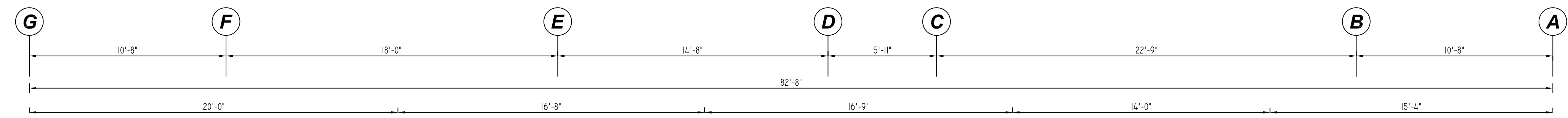


TYPICAL REINFORCING BAR CLEARANCE TABLE

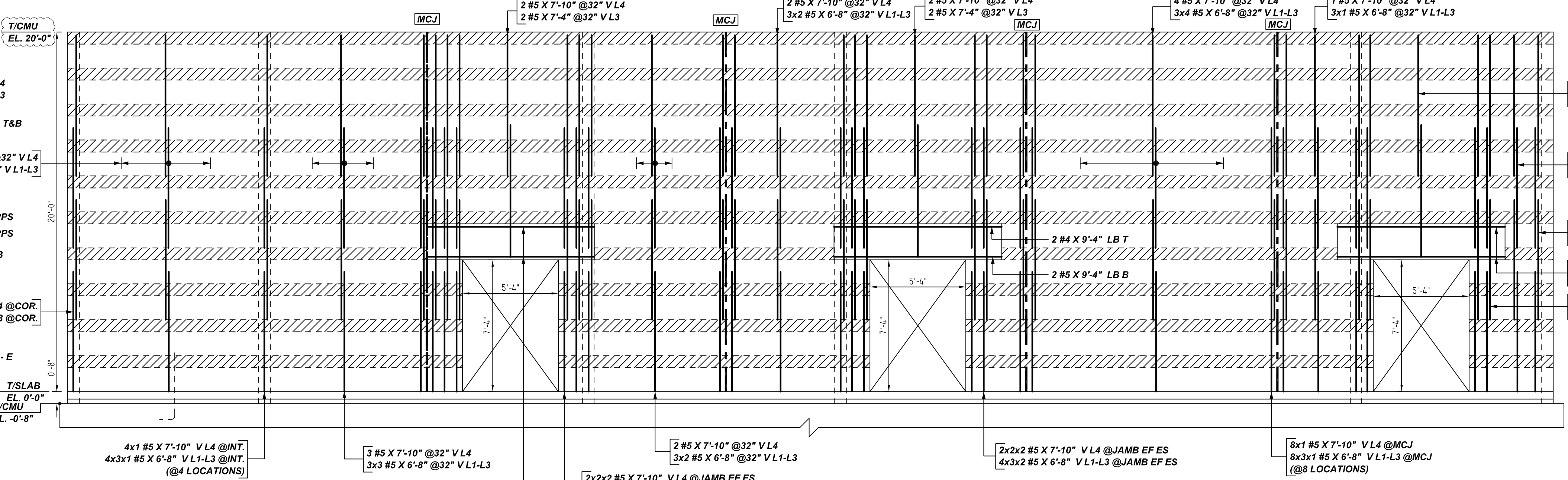
LOCATION	MIN. COVER
WALL TOP & SIDE	2" CLR

ALL BARS IN THIS DRAWING
ASTM A615 GRADE 60
BLACK UNCOATED

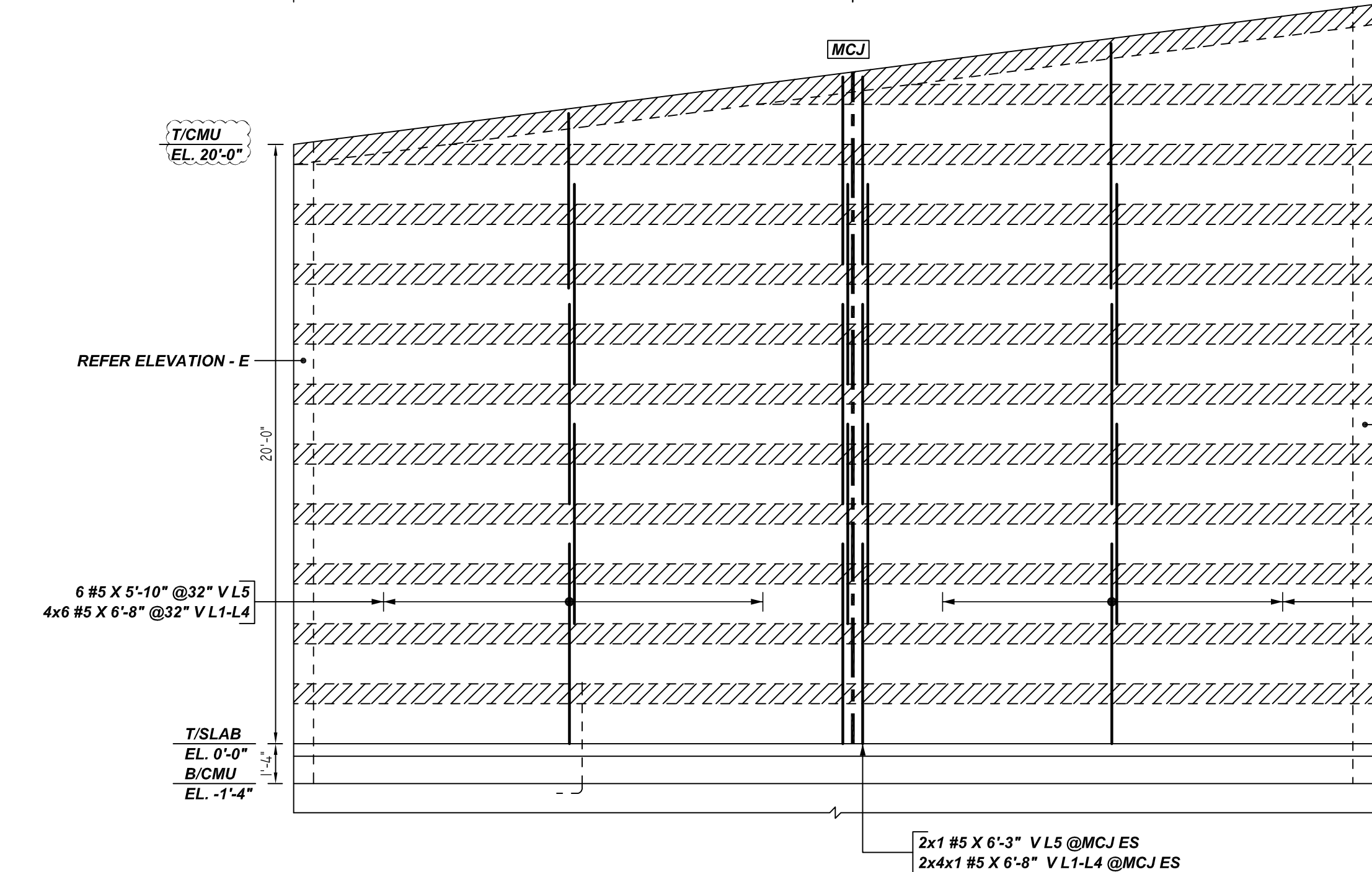
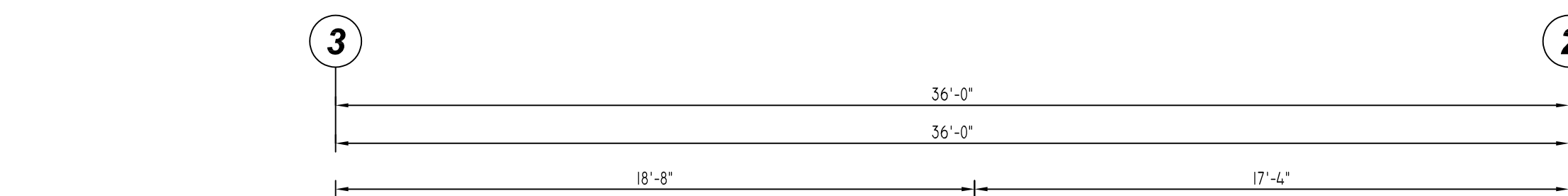
GRADE	A615/60(UNO)		
PREFIX	A		
BAR LIST NOS.	-		
REV	DESCRIPTION	ISSUED DATE	ISSUED FOR
0	IFA	07/29/2022	APPROVAL
STRUCTURE	CMU WALL REINFORCEMENT DETAILS		
FLOOR	FOUNDATION TO PARAPET		
JOB NO	-		
CUSTOMER	J. GINGER MASONRY LP		
JOB	FLOWING WELLS		
LOCATION	1440 W. PRINCE RD, TUCSON, AZ 85705		
DRAWN	DATE	CONTROL CODE	DWG. NO.
MRS	07/29/2022	-	M02



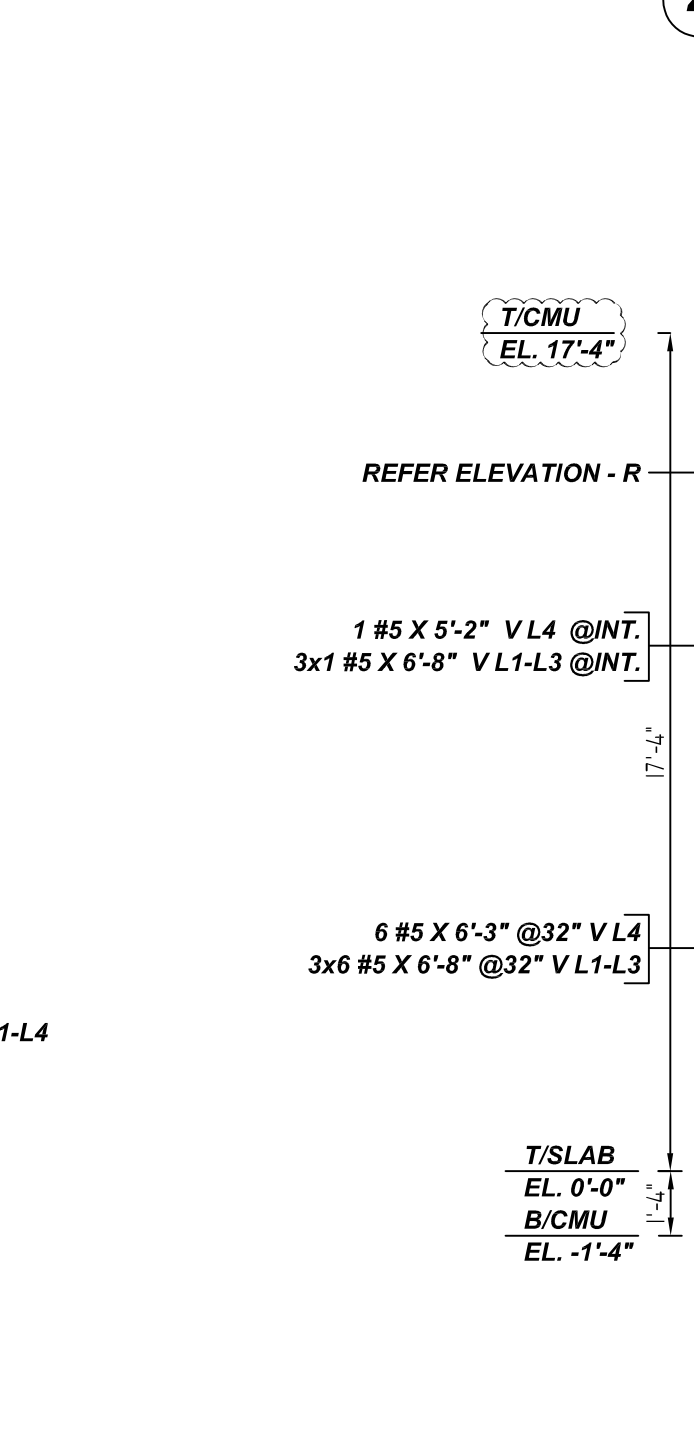
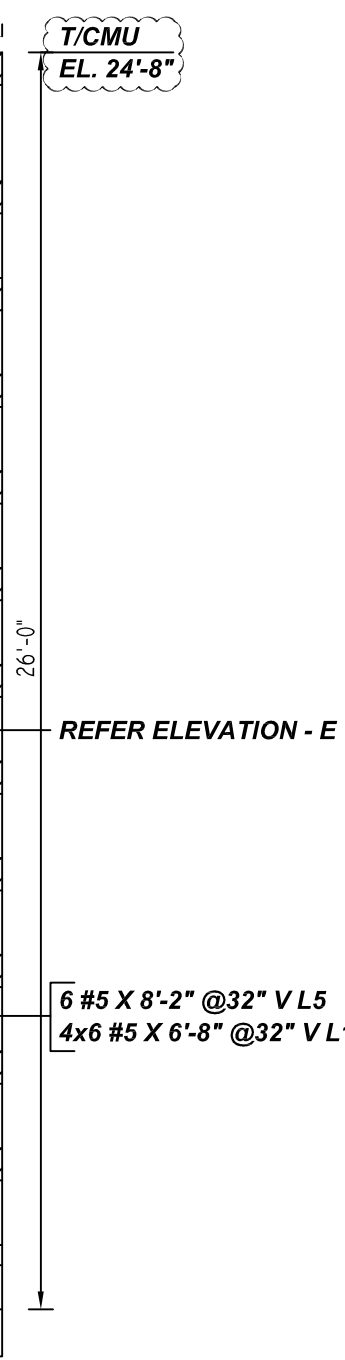
F ELEVATION
 REF: S2.1, A2.1 & A5.5
 SCALE: 1/4" = 1'-0"



G ELEVATION
 REF: S3.3, S2.1, A2.3 & A5.1
 SCALE: 1/4" = 1'-0"



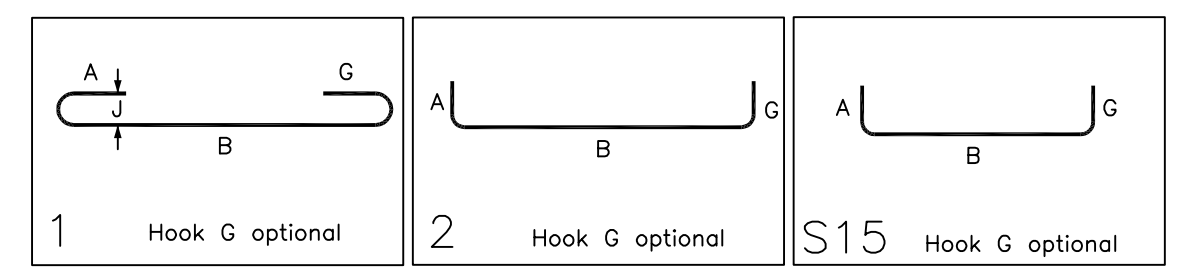
H ELEVATION
 REF: S3.3, S2.1, A2.3 & A5.1
 SCALE: 1/4" = 1'-0"



J ELEVATION
 REF: S3.3, S2.1, A2.3 & A5.1
 SCALE: 1/4" = 1'-0"

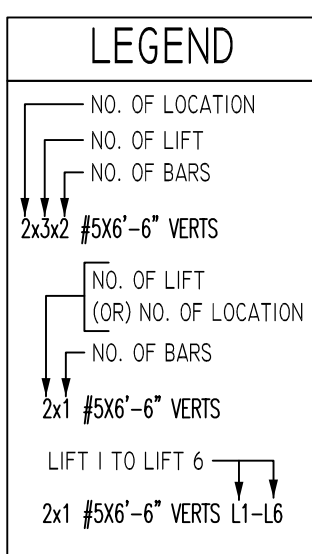
Release Number: M03

Bar Mark	Qty	Size	Total Length	Type	'A'	'B'	'C'	'D'	'E'	'F'	'G'	'H'	'I'	'J'	'K'	'L'
4401	16	#4	2'-10"	1	0'-6"	2'-4"										
4403	22	#4	1'-7"	S15	0'-4 1/2"	0'-10"										
5401	4	#5	10'-6"	2	0'-10"	9'-8"										



LAP SCHEDULE
 8" & 12" CMU

BAR#	LENGTHS
#4	24"
#5	32"
#6	39"
#7	45"



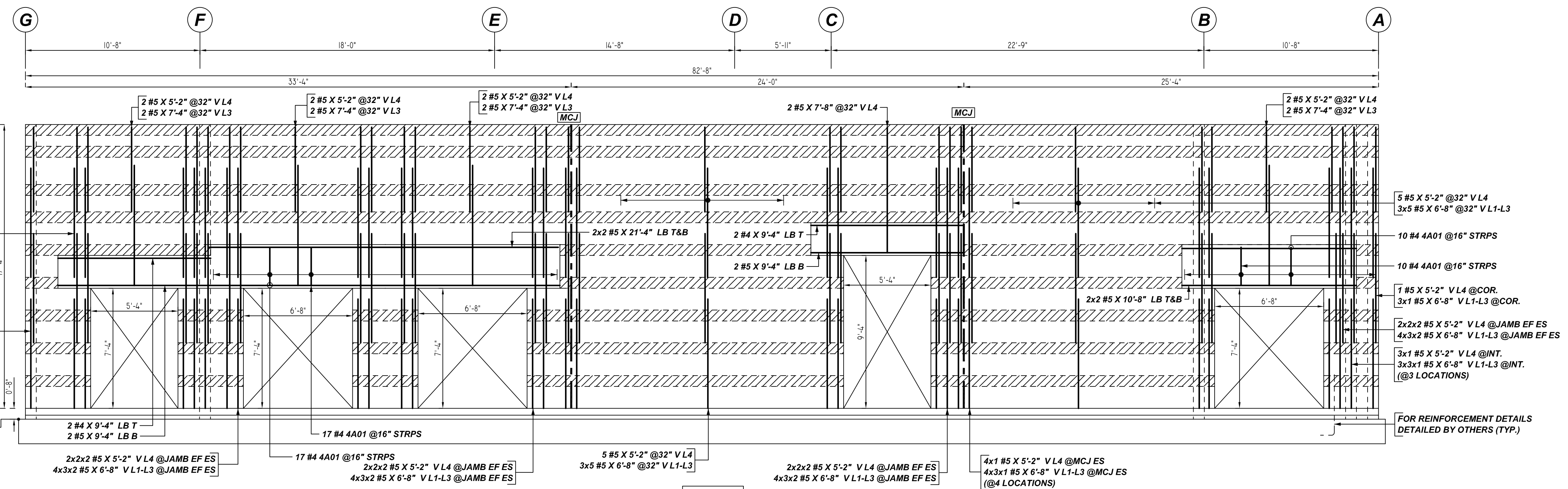
TYPICAL REINFORCING BAR CLEARANCE TABLE

LOCATION	MIN. COVER
WALL TOP & SIDE	2" CLR

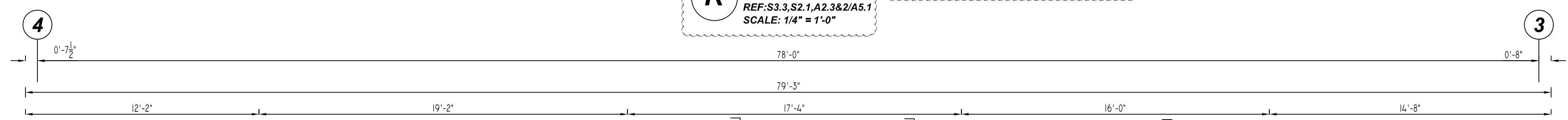
**ALL BARS IN THIS DRAWING
 ASTM A615 GRADE 60
 BLACK UNCOATED**

FOR APPROVAL

GRADE	A615/60(UNO)		
PREFIX	A		
BAR LIST NOS.	-		
REV	DESCRIPTION	ISSUED DATE	ISSUED FOR
0	IFA	07/29/2022	APPROVAL
STRUCTURE	CMU WALL REINFORCEMENT DETAILS		
FLOOR	FOUNDATION TO PARAPET		
JOB NO	-		
CUSTOMER	J. GINGER MASONRY LP		
JOB	FLOWING WELLS		
LOCATION	1440 W. PRINCE RD, TUCSON, AZ 85705		
DRAWN	DATE	CONTROL CODE	DWG. NO.
MRS	07/29/2022	-	M03



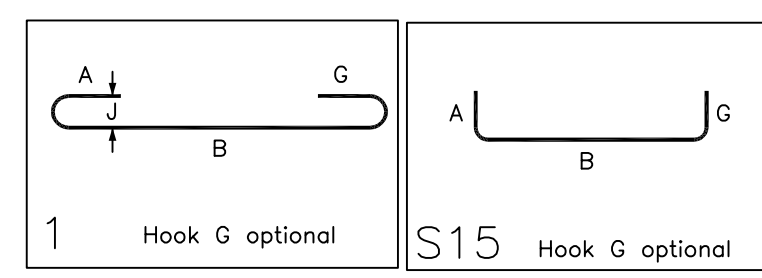
R ELEVATION
 REF: S3.3, S2.1, A2.3&2/A5.1
 SCALE: 1/4" = 1'-0"



S ELEVATION
 REF: S3.3, S2.1, A2.3&2/A5.1
 SCALE: 1/4" = 1'-0"

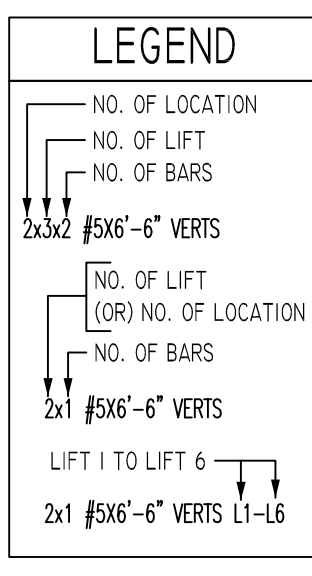
Release Number: M06

Bar Mark	Qty	Size	Total Length	Type	'K'	'B'	'C'	'D'	'E'	'F'	'G'	'H'	'I'	'J'	'K'	'L'	'M'
4A01	54	#4	2'-10"	1	0'-6"	2'-4"											
4A03	21	#4	1'-7"	S15	0'-4 1/2"	0'-10"											
4A04	12	#4	3'-4"	1	0'-6"	2'-4"											
5A05	2	#5	7'-3"	1	0'-7"	6'-8"											
5A09	4	#5	7'-6"	1	0'-7"	6'-4"											



LAP SCHEDULE
 8" & 12" CMU

BAR#	LENGTHS
#4	24"
#5	32"
#6	39"
#7	45"



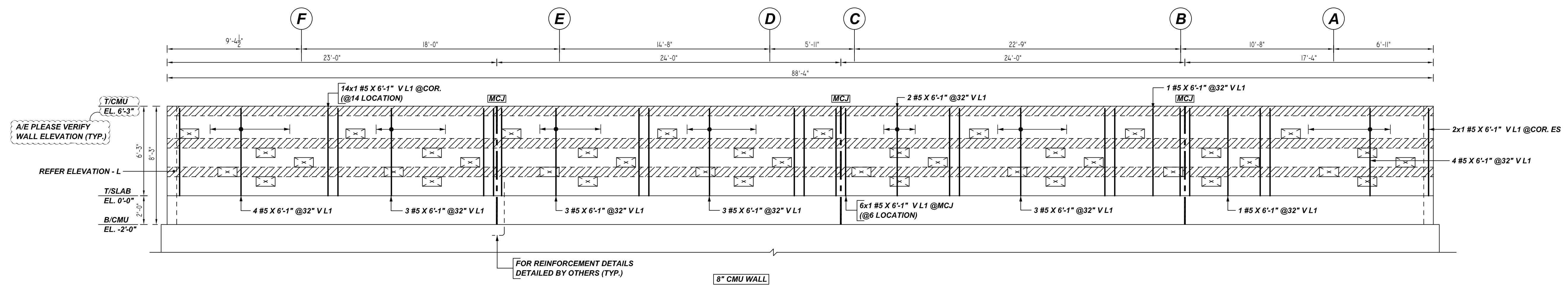
TYPICAL REINFORCING BAR CLEARANCE TABLE

LOCATION	MIN. COVER
WALL TOP & SIDE	2" CLR

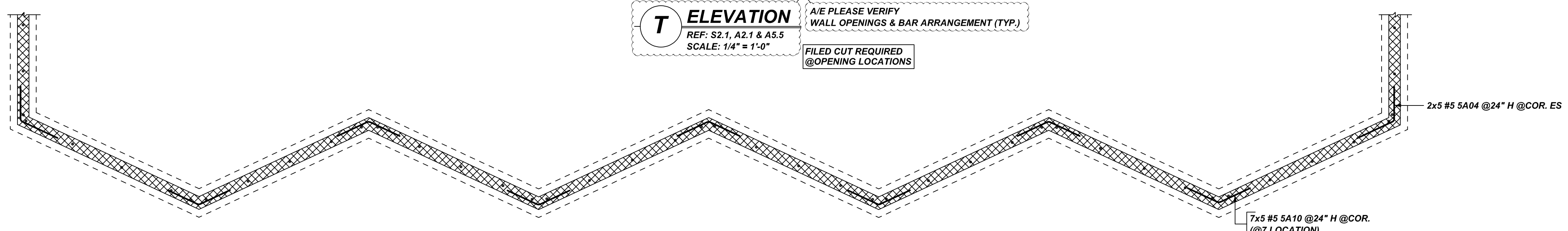
**ALL BARS IN THIS DRAWING
 ASTM A615 GRADE 60
 BLACK UNCOATED**

FOR APPROVAL

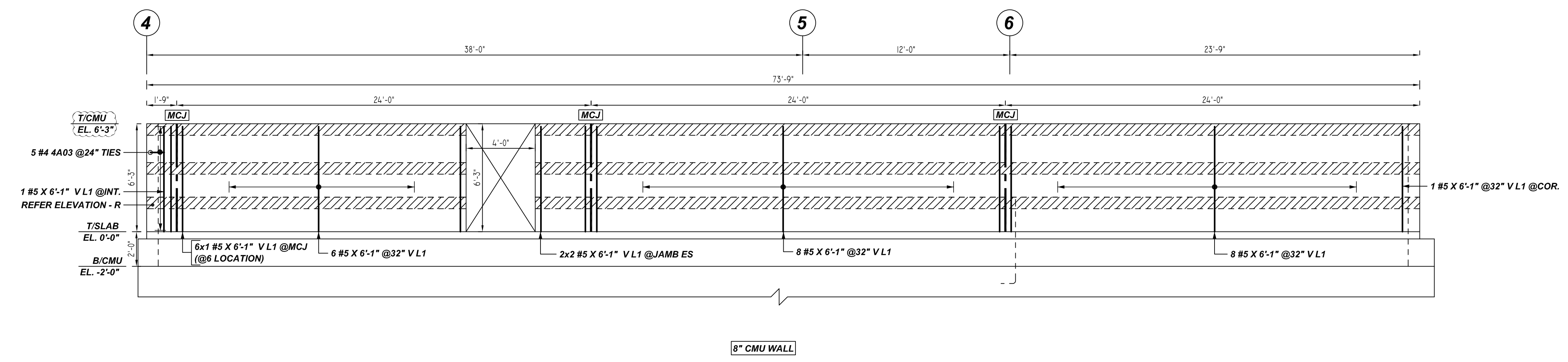
GRADE	A615/60(UNO)		
PREFIX	A		
BAR LIST NOS.	-		
REV	DESCRIPTION	ISSUED DATE	ISSUED FOR
0	IFA	07/29/2022	APPROVAL
STRUCTURE	CMU WALL REINFORCEMENT DETAILS		
FLOOR	FOUNDATION TO PARAPET		
JOB NO	-		
CUSTOMER	J. GINGER MASONRY LP		
JOB	FLOWING WELLS		
LOCATION	1440 W. PRINCE RD, TUCSON, AZ 85705		
DRAWN	DATE	CONTROL CODE	DWG. NO.
MRS	07/29/2022	-	M06



T ELEVATION
 REF: S2.1, A2.1 & A5.5
 SCALE: 1/4" = 1'-0"
 A/E PLEASE VERIFY WALL OPENINGS & BAR ARRANGEMENT (TYP.)
 FILED CUT REQUIRED @ OPENING LOCATIONS



PLAN VIEW - T
 REF: S2.1, A2.1 & A5.5
 SCALE: 1/4" = 1'-0"

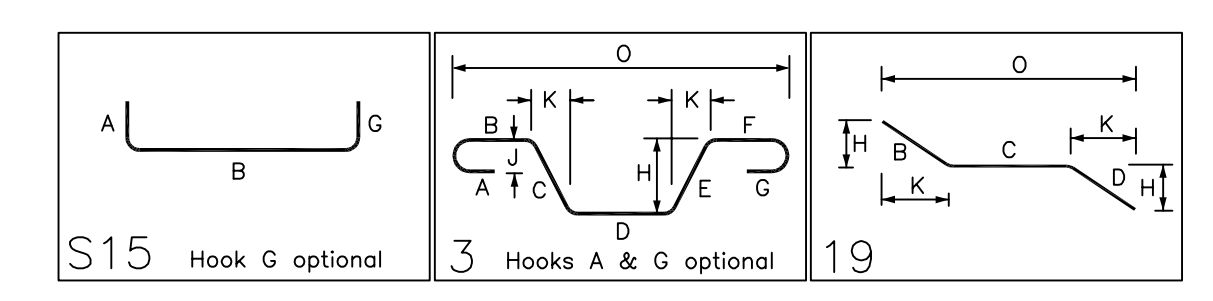


U ELEVATION
 REF: S3.3, S2.1, A2.3 & A5.1
 SCALE: 1/4" = 1'-0"

FOR APPROVAL

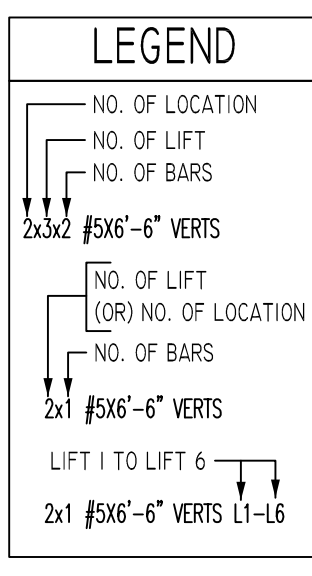
Release Number: M07

Bar Mark	Qty	Size	Total Length	Type	"A"	"B"	"C"	"D"	"E"	"F"	"G"	"H"	"I"	"J"	"K"	"L"
4A03	5	#4	1'-7"	S15	0'-4 3/4"	0'-10"					0'-4 3/4"					
5A04	10	#5	4'-4"	3	1'-11 3/4"	2'-4 3/4"					2'-2"			0'-11 3/4"	2'-11 3/4"	
5A10	35	#5	3'-11 3/4"	19	1'-11 3/4"	2'-0"					1'-6 3/4"			1'-2 3/4"	3'-2 3/4"	



LAP SCHEDULE
 8" & 12" CMU

BAR#	LENGTHS
#4	24"
#5	32"
#6	39"
#7	45"



TYPICAL REINFORCING BAR CLEARANCE TABLE

LOCATION	MIN. COVER
WALL TOP & SIDE	2" CLR

**ALL BARS IN THIS DRAWING
 ASTM A615 GRADE 60
 BLACK UNCOATED**

GRADE	A615/60(UNO)		
PREFIX	A		
BAR LIST NOS.	-		
REV	DESCRIPTION	ISSUED DATE	ISSUED FOR
0	IFA	07/29/2022	APPROVAL
STRUCTURE	CMU WALL REINFORCEMENT DETAILS		
FLOOR	FOUNDATION TO PARAPET		
JOB NO	-		
CUSTOMER	J. GINGER MASONRY LP		
JOB	FLOWING WELLS		
LOCATION	1440 W. PRINCE Rd, TUCSON, AZ 85705		
DRAWN	DATE	CONTROL CODE	DWG. NO.
MRS	07/29/2022	-	M07