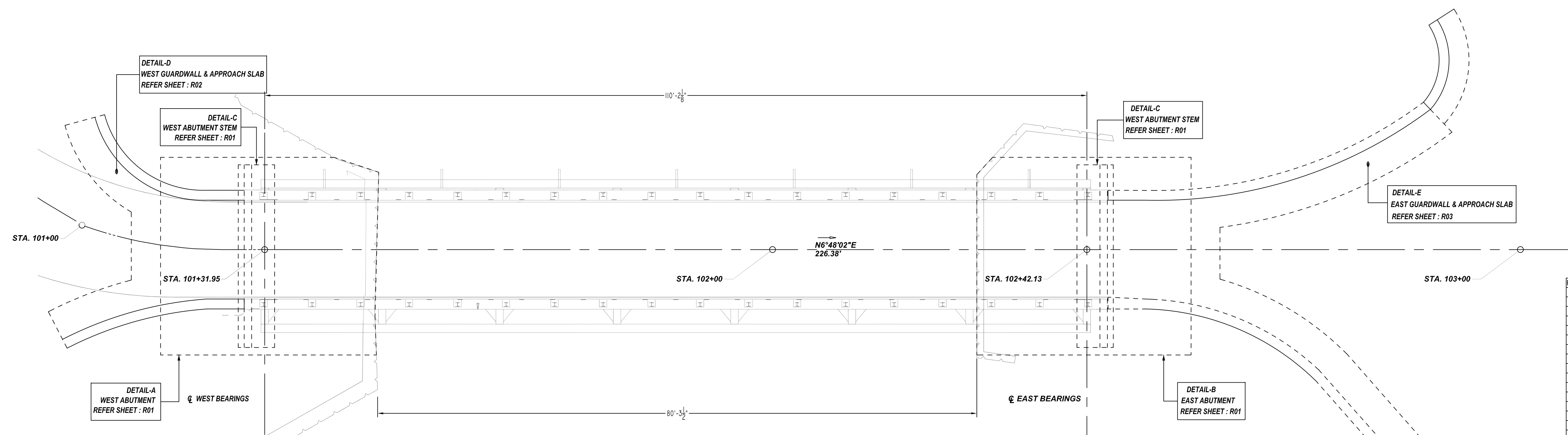


**NOTICE**  
 SHORTAGES, IMPROPER FABRICATION OR CLAIMS FOR ANY OTHER REASON MUST BE REPORTED TO THIS COMPANY WITHIN 10 DAYS FROM ORIGINAL DELIVERY. THIS COMPANY ALSO RESERVES THE RIGHT TO FIELD INSPECT MATERIALS PRIOR TO REPLACEMENT OR RECONDITIONING OF MATERIALS AND WILL NOT BE LIABLE FOR CHARGES FROM WORK DONE IN THE FIELD WITHOUT PRIOR AUTHORIZATION FROM THIS COMPANY.

REINFORCING STEEL PLACING DRAWING ONLY. USE IN CONJUNCTION WITH CONTRACT DRAWINGS & SPECIFICATIONS. ELEVATIONS & DIMENSIONS SHOWN ON DRAWING ARE FOR DETAILING PURPOSES ONLY AND SHOULD NOT BE USED FOR CONSTRUCTION UNLESS VERIFIED BY ENGINEER OR CONTRACTOR.



Bar Mark	Qty	Size	Total Length	Type	X	Y	Z	W	V	U	T	S	R	Q	P	O	N	M	L	K	J	I	H	G	F	E	D	C	B	A
4A01	56	#4	17'-0"	S14	0'-4"	1'-0"	1'-7"	1'-0"	1'-0"	0'-9"	0'-4"	0'-4"	1'-11"																	
4A03	56	#4	2'-7"	S7	0'-5"	1'-7"	0'-5"																							
4A04	56	#4	2'-11"	T9	0'-4"	1'-0"																								
4A12	28	#4	20'-0"	T1	0'-4"	4'-8"	5'-1"	4'-8"	5'-1"	0'-4"																				
4A13	100	#4	4'-0"	T7	2'-1"	0'-5"	2'-1"																							
4A14	100	#4	8'-3"	T7	2'-5"	1'-5"	3'-5"																							
7A01	24	#7	8'-3"	2	1'-2"	8'-1"																								
7A02	26	#7	18'-6"	S5	1'-2"	5'-10"	4'-6"	5'-10"																						
8A01	48	#8	18'-10"	S5	1'-4"	5'-10"	4'-6"	5'-10"																						
10A01	56	#10	12'-0"	2	1'-10"	10'-2"																								
10A02	88	#10	17'-2"	T7	3'-11"	13'-3"																								
10A03	1	#10	16'-8"	T7	3'-11"	12'-0"																								
10A04	1	#10	16'-3"	T7	3'-11"	12'-4"																								
10A05	1	#10	15'-6"	T7	3'-11"	11'-7"																								
10A06	1	#10	14'-11"	T7	3'-11"	11'-0"																								
10A07	1	#10	15'-9"	T7	3'-11"	11'-10"																								
10A08	1	#10	14'-5"	T7	3'-11"	10'-6"																								
10A09	1	#10	12'-9"	T7	3'-11"	8'-10"																								
10A10	1	#10	11'-5"	T7	3'-11"	7'-6"																								

**LAP SCHEDULE**

SIZE	4000 PSI	
	TOP	OTHERS
#3	24"	19"
#4	32"	25"
#5	40"	31"
#6	48"	37"
#7	70"	54"
#8	80"	62"
#9	91"	70"
#10	102"	79"
#11	113"	87"

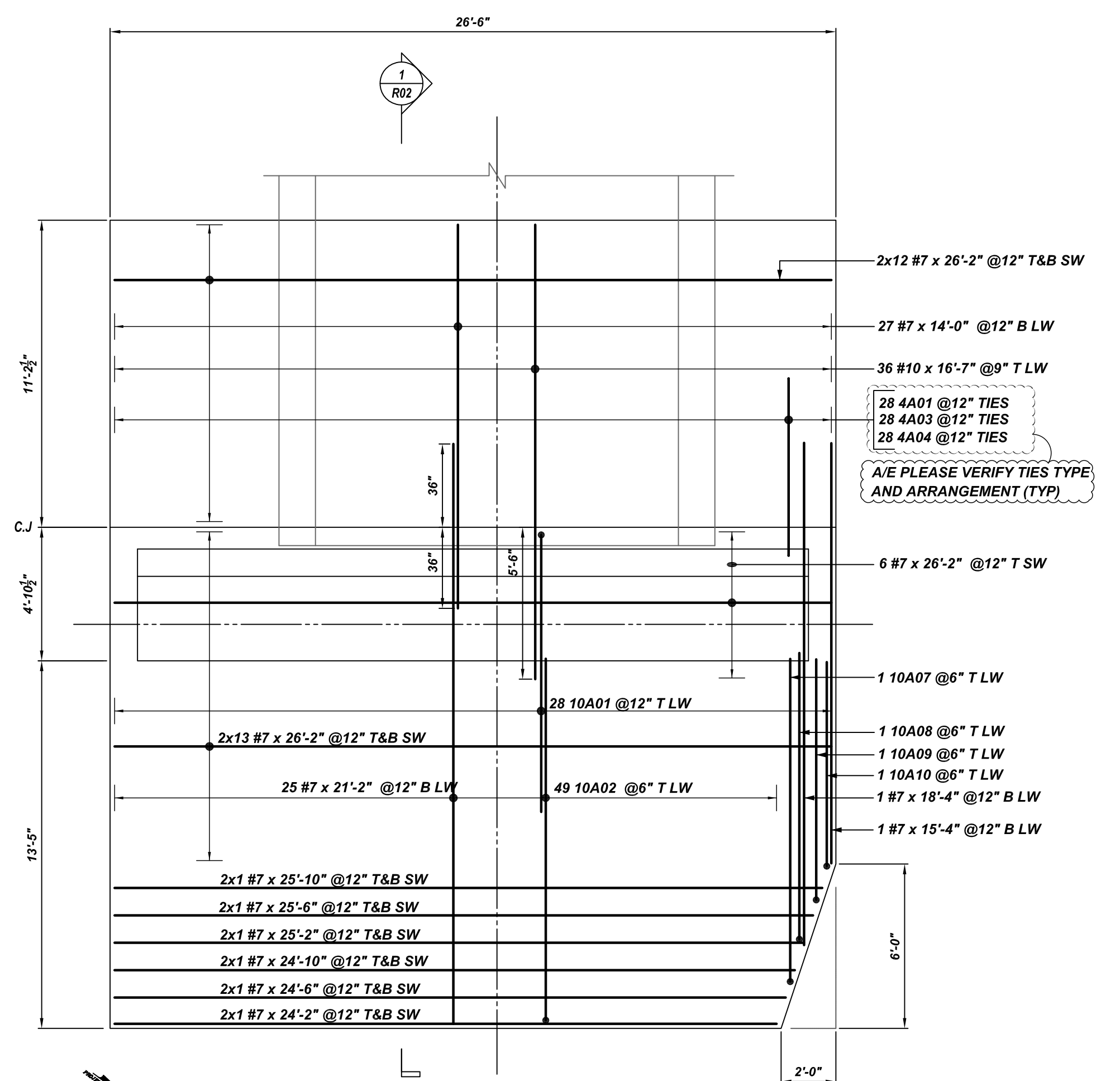
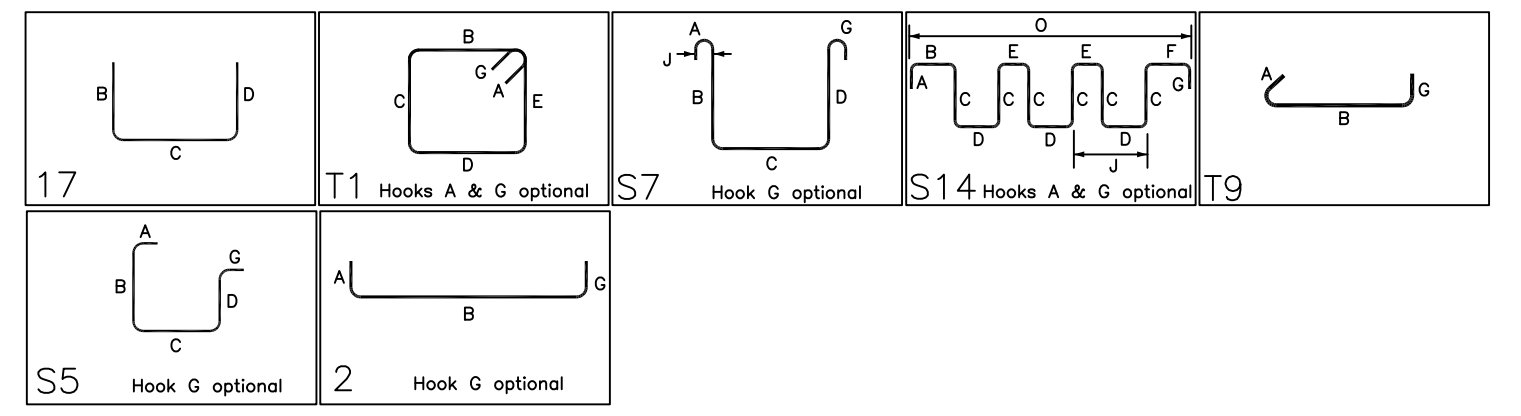
**TYPICAL REINFORCING BAR CLEARANCE TABLE**

LOCATION	MIN. COVER
FOUNDATION BOTTOM	3" CLR
FOUNDATION TOP	2" CLR
FOUNDATION SIDES	3" CLR

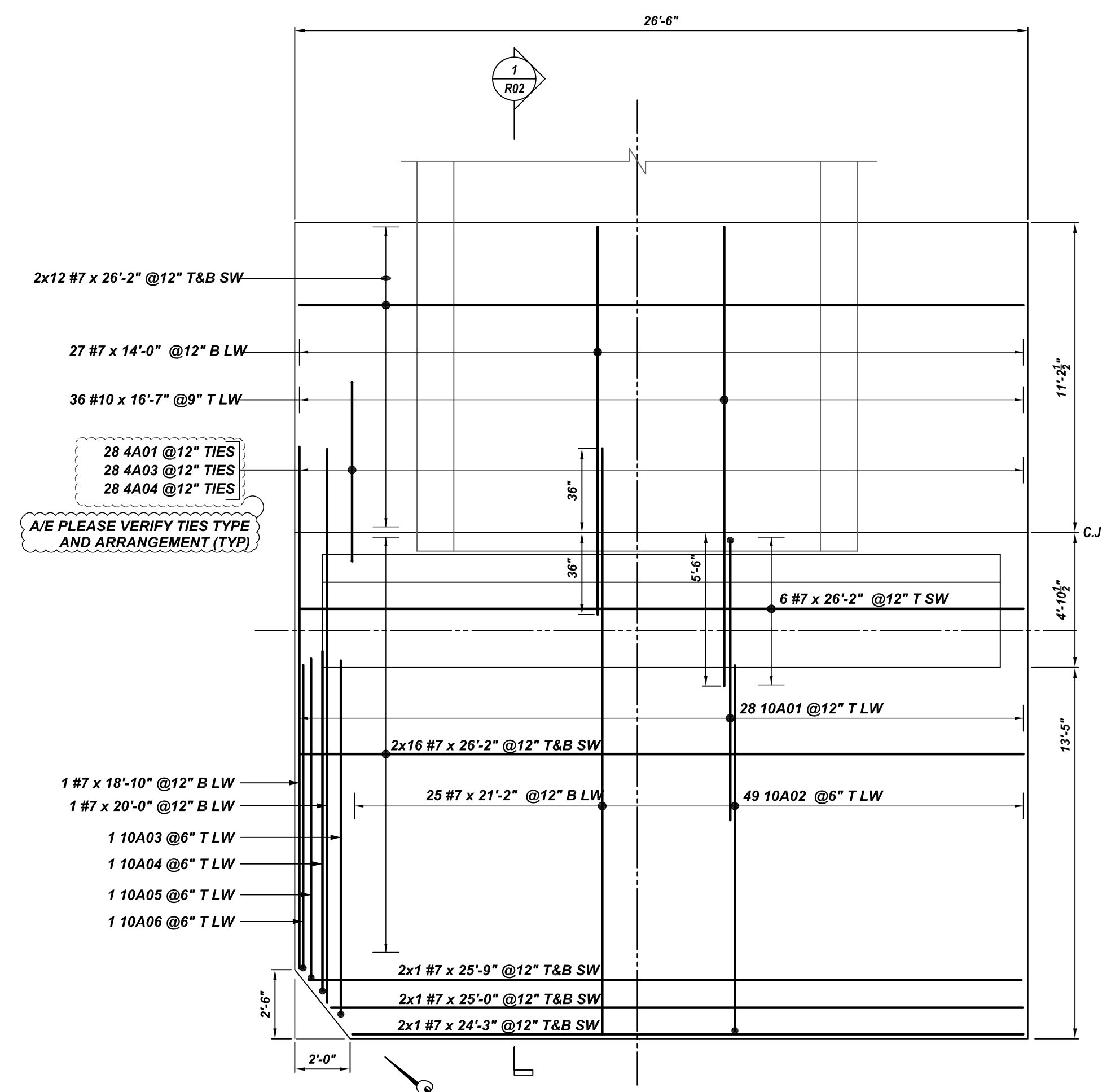
A/E PLEASE VERIFY COVER TABLE

**ALL BARS IN THIS DRAWING  
 ASTM A615 GRADE 60  
 BLACK UNCOATED**

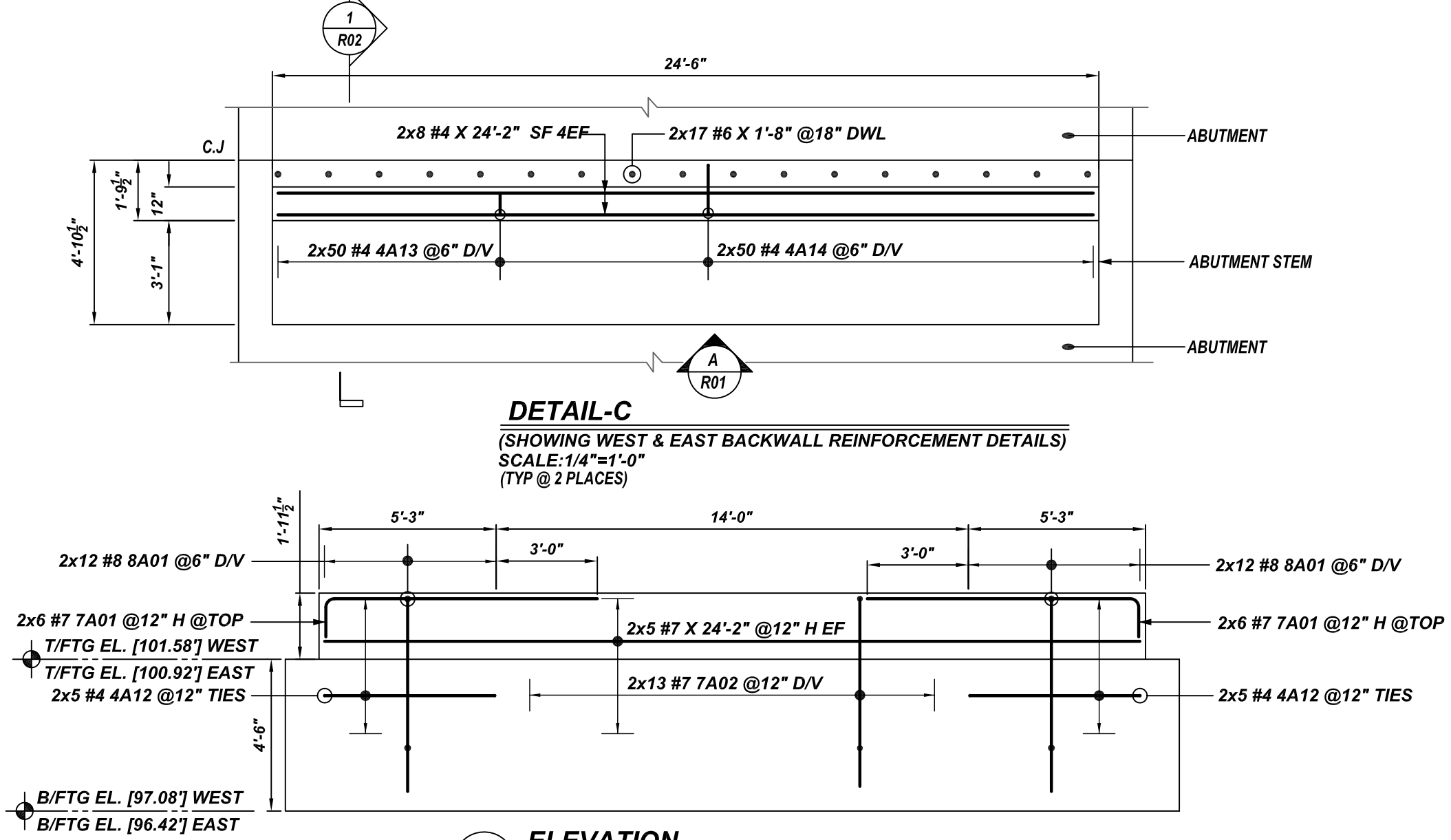
**BRIDGE REINFORCEMENT DETAILS**  
 SCALE - 1/8"=1'-0"  
 REF: SHEET 1 OF 9 SHEETS



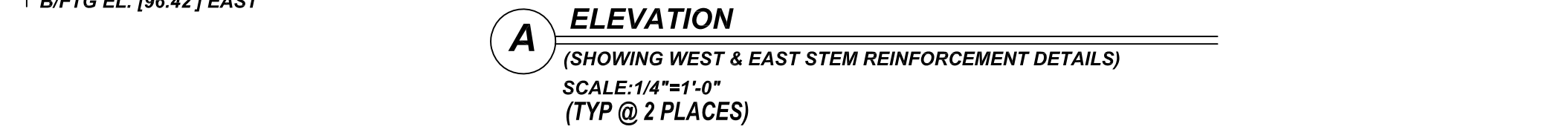
**DETAIL-A**  
 (SHOWING WEST ABUTMENT REINFORCEMENT DETAILS)  
 SCALE: 1/4"=1'-0"



**DETAIL-B**  
 (SHOWING EAST ABUTMENT REINFORCEMENT DETAILS)  
 SCALE: 1/4"=1'-0"



**DETAIL-C**  
 (SHOWING WEST & EAST BACKWALL REINFORCEMENT DETAILS)  
 SCALE: 1/4"=1'-0"  
 (TYP @ 2 PLACES)



**DETAIL-A**  
 (SHOWING WEST & EAST STEM REINFORCEMENT DETAILS)  
 SCALE: 1/4"=1'-0"  
 (TYP @ 2 PLACES)

**REBAR GRADE 60 ASTM A-615**

**SPLICES USED**

**CLASS B 4,000 psi UNO**

TOP BARS	OTHER BARS
#3 -	#3 -
#4 -	#4 -
#5 -	#5 -
#6 -	#6 -
#7 -	#7 -
#8 -	#8 -
#9 -	#9 -
#10 -	#10 -
#11 -	#11 -
#14 -	#14 -

ABBREVIATIONS	
ADD.	= Additional
B.O.W.	= Bottom of wall
C.B.	= Corner Bars
DIAG.	= Diagonal
D.O.	= Door Opening
DWLS.	= Dowels
E.F.	= Each Face
E.S.	= Each Side
E.W.	= Each Way
FTG.	= Footing
F.F.	= Far Face
HORIZ.	= Horizontal
I.F.	= Inside Face
INTERS.	= Intersection
L.W.	= long Way
N.F.	= Near Face
O.F.	= Outside Face
S.W.	= Short Way
T&B	= Top & Bottom
T.O.W.	= Top of Wall
Trans.	= Transverse
VERT.	= Vertical

BAR MARK SIZE EQUIVALENT	
Imperial	Soft Metric
#3	#10
#4	#13
#5	#16
#6	#19
#7	#22
#8	#25
#9	#29
#10	#32
#11	#36

**ISLAND ROAD-VESPER COUNTY CLUB**  
 EAST & WEST ABUTMENT REINFORCEMENT DETAILS  
**TYNGSBOROUGH, MA**

CUSTOMER: KODIAK  
 DESIGNER: BAYSIDE ENGINEERING

REV NO	DATE	APPROVAL	REV NO	DATE	SENT FOR
0	09.23.21				

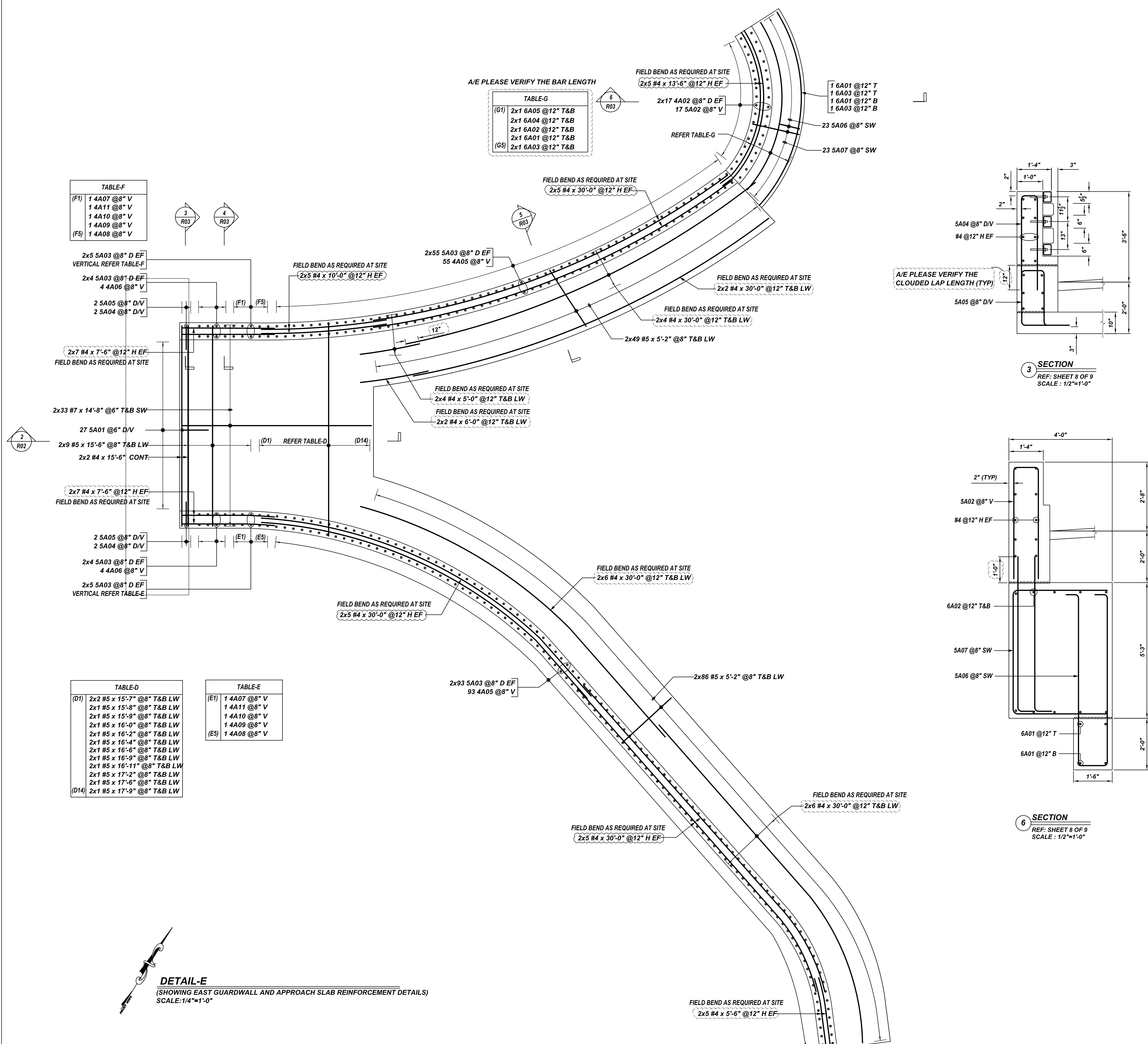
SS/MET	DATE	JOB NO	SHEET NO.
	09.23.21	M921P1019	R01



**NOTICE**

SHORTAGES, IMPROPER FABRICATION OR CLAIMS FOR ANY OTHER REASON MUST BE REPORTED TO THIS COMPANY WITHIN 10 DAYS FROM ORIGINAL DELIVERY. THIS COMPANY ALSO RESERVES THE RIGHT TO FIELD INSPECT MATERIALS PRIOR TO REPLACEMENT OR RECONDITIONING OF MATERIALS AND WILL NOT BE LIABLE FOR CHARGES FROM WORK DONE IN THE FIELD WITHOUT PRIOR AUTHORIZATION FROM THIS COMPANY.

REINFORCING STEEL PLACING DRAWING ONLY. USE IN CONJUNCTION WITH CONTRACT DRAWINGS & SPECIFICATIONS. ELEVATIONS & DIMENSIONS SHOWN ON DRAWING ARE FOR DETAILING PURPOSES ONLY AND SHOULD NOT BE USED FOR CONSTRUCTION UNLESS VERIFIED BY ENGINEER OR CONTRACTOR.



**TABLE-F**

(F1)	1 4A07 @ 8\" V
	1 4A11 @ 8\" V
	1 4A10 @ 8\" V
	1 4A09 @ 8\" V
(F5)	1 4A08 @ 8\" V

**TABLE-G**

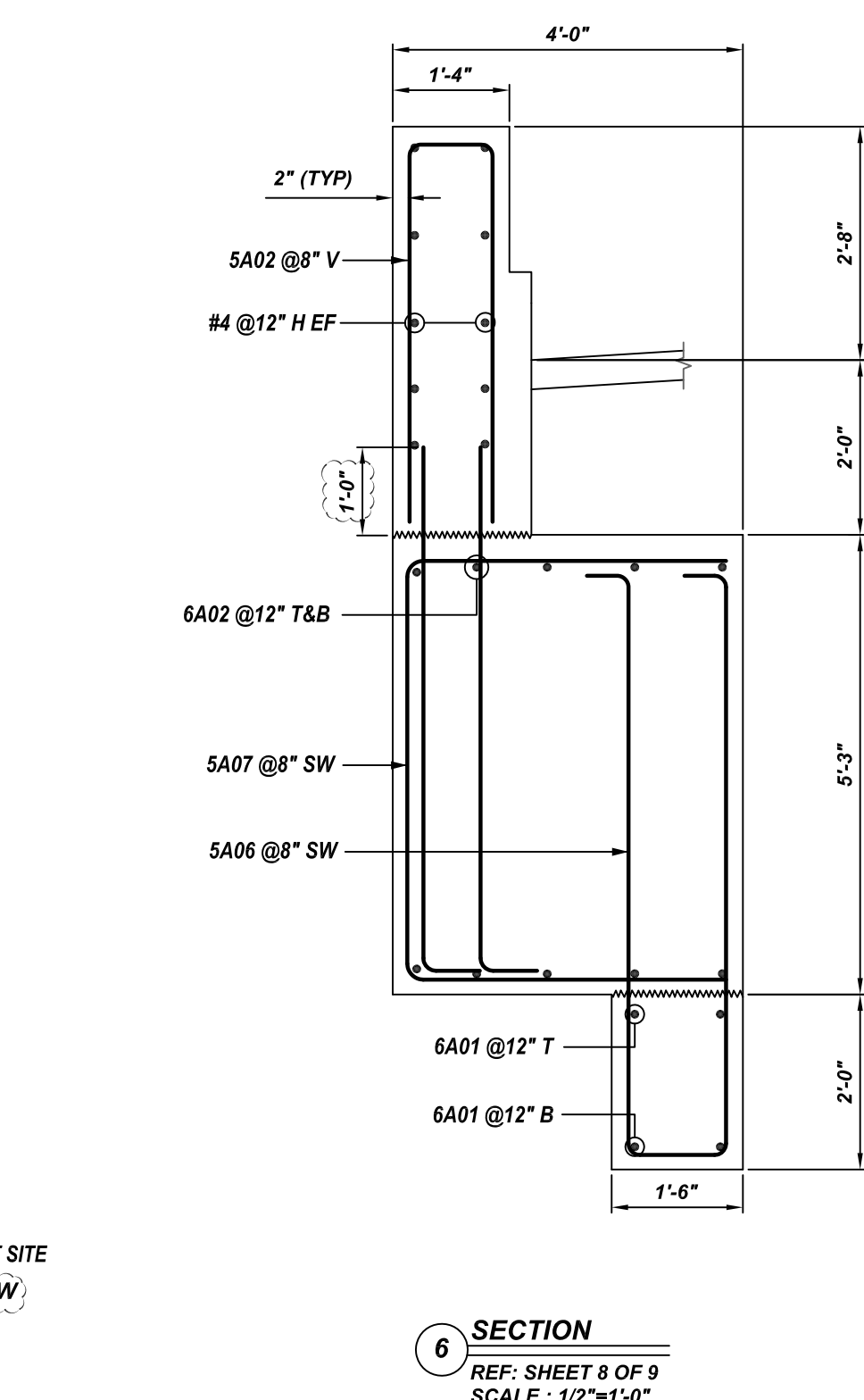
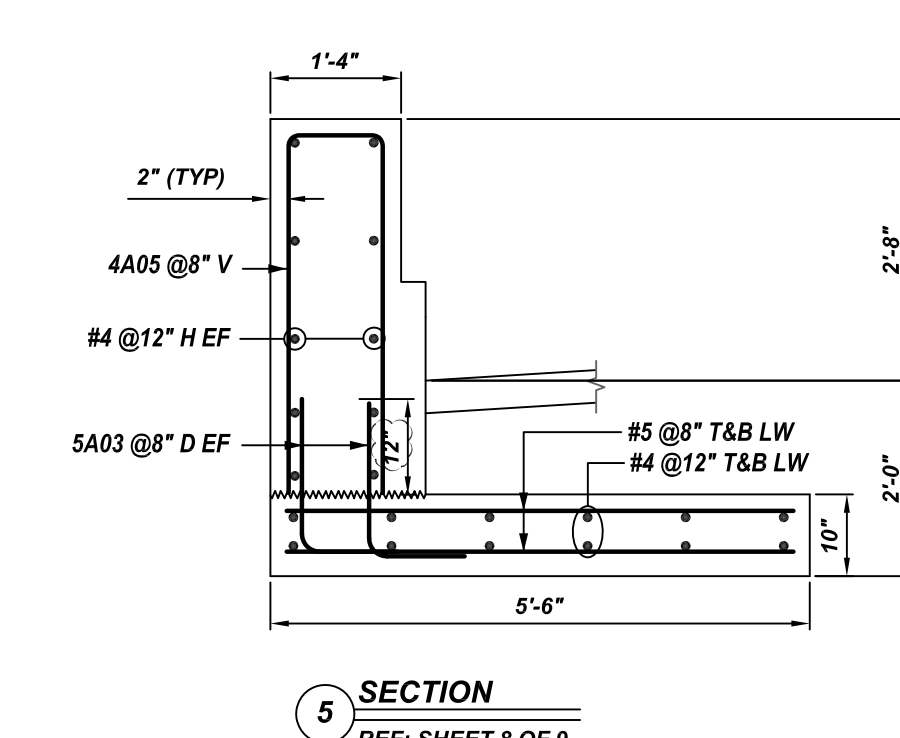
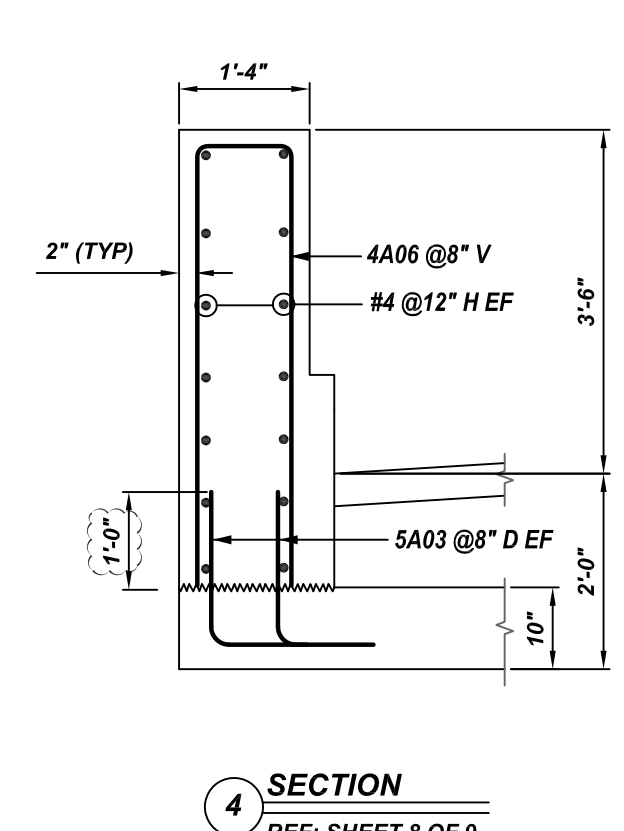
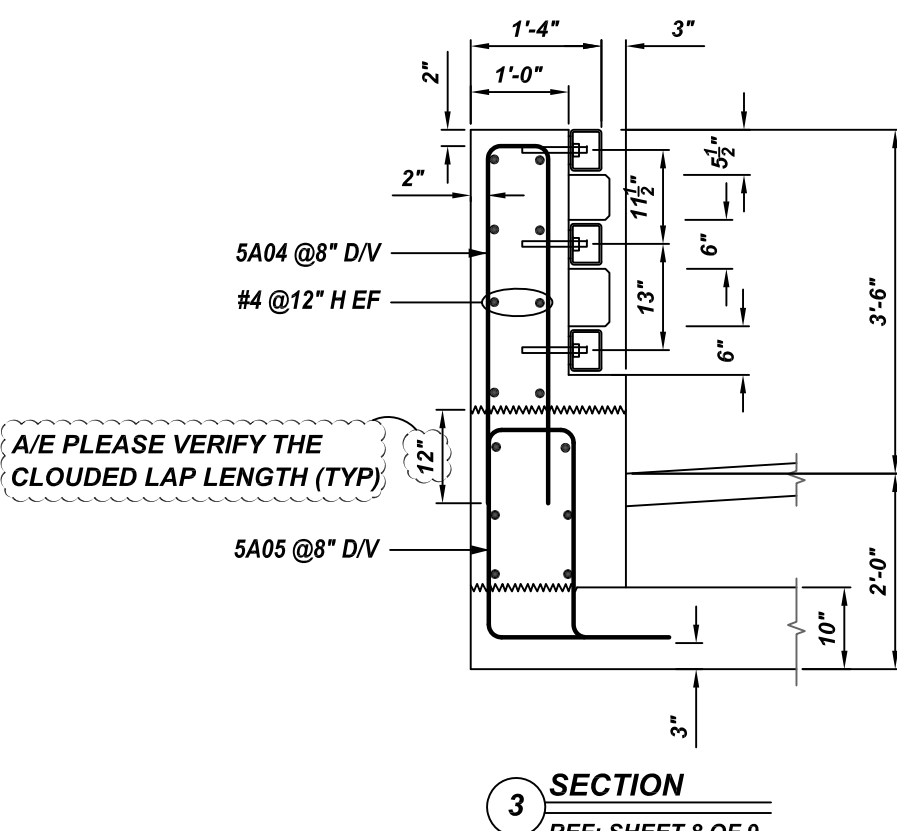
(G1)	2x1 6A05 @ 12\" T&B
	2x1 6A04 @ 12\" T&B
	2x1 6A02 @ 12\" T&B
	2x1 6A01 @ 12\" T&B
(G5)	2x1 6A03 @ 12\" T&B

**TABLE-D**

(D1)	2x2 #5 x 15-7\" @ 8\" T&B LW
	2x1 #5 x 15-8\" @ 8\" T&B LW
	2x1 #5 x 15-9\" @ 8\" T&B LW
	2x1 #5 x 16-0\" @ 8\" T&B LW
	2x1 #5 x 16-2\" @ 8\" T&B LW
	2x1 #5 x 16-4\" @ 8\" T&B LW
	2x1 #5 x 16-6\" @ 8\" T&B LW
	2x1 #5 x 16-9\" @ 8\" T&B LW
	2x1 #5 x 16-11\" @ 8\" T&B LW
	2x1 #5 x 17-2\" @ 8\" T&B LW
	2x1 #5 x 17-6\" @ 8\" T&B LW
(D14)	2x1 #5 x 17-9\" @ 8\" T&B LW

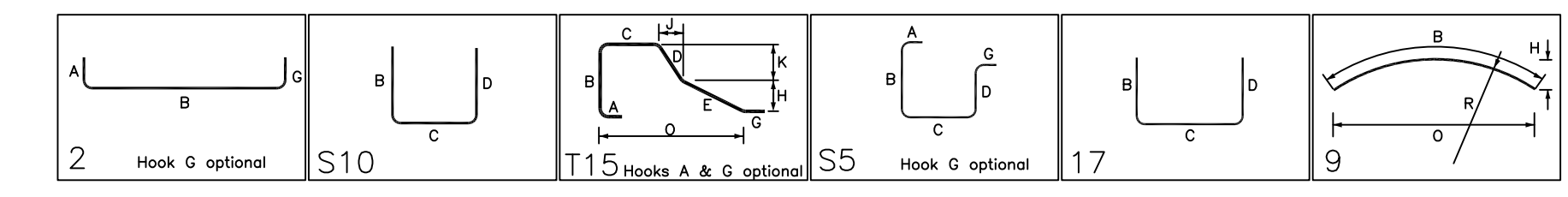
**TABLE-E**

(E1)	1 4A07 @ 8\" V
	1 4A11 @ 8\" V
	1 4A10 @ 8\" V
	1 4A09 @ 8\" V
(E5)	1 4A08 @ 8\" V



Rebar Number: R03

Bar Mark	Qty	Size	Total Length	Type	X	Y	Z	W	V	U	T	S	R	Q	P	O	N	M	L	K	J	I	H	G	F	E	D	C	B	A
4A02	34	#4	6'-8"	2	0'-8"																									
4A05	148	#4	8'-4"	S10		3'-8"	1'-0"	3'-8"																						
4A06	8	#4	10'-0"	S10		4'-6"	1'-0"	4'-6"																						
4A07	2	#4	9'-8"	S10		4'-4"	1'-0"	4'-4"																						
4A08	2	#4	8'-4"	S10		3'-8"	1'-0"	3'-8"																						
4A09	2	#4	8'-8"	S10		3'-10"	1'-0"	3'-10"																						
4A10	2	#4	9'-0"	S10		4'-0"	1'-0"	4'-0"																						
4A11	2	#4	9'-4"	S10		4'-2"	1'-0"	4'-2"																						
5A01	27	#5	5'-6"	11S	0'-4"	1'-7"	0'-8"	1'-7"	0'-3"	0'-6"	0'-6"	0'-5"	1'-7"	1'-6"																
5A02	17	#5	9'-8"	S10		4'-4"	1'-0"	4'-4"																						
5A03	332	#5	2'-7"	2	1'-0"	1'-7"																								
5A04	4	#5	8'-0"	S10		3'-8"	0'-8"	3'-8"																						
5A05	4	#5	7'-5"	SS	1'-0"	2'-2"	0'-11"	2'-2"																						
5A06	23	#5	15'-8"	SS	0'-4"	6'-8"	1'-7"	6'-8"																						
5A07	23	#5	12'-2"	17		3'-8"	4'-10"	3'-8"																						
6A01	4	#6	15'-3"	9		15'-3"																								
6A02	2	#6	13'-11"	9		13'-11"																								
6A03	4	#6	16'-4"	9		16'-4"																								
6A04	2	#6	12'-5"	9		12'-5"																								
6A05	2	#6	11'-1"	9		11'-1"																								



**LAP SCHEDULE**

SIZE	TOP	OTHERS
#3	24"	19"
#4	32"	25"
#5	40"	31"
#6	48"	37"
#7	70"	54"
#8	80"	62"
#9	91"	70"
#10	102"	79"
#11	113"	87"

**TYPICAL REINFORCING BAR CLEARANCE TABLE**

LOCATION	MIN. COVER
WALL TOP & BOTTOM	2" CLR
WALL SIDES	2" CLR

**ALL BARS IN THIS DRAWING  
ASTM A615 GRADE 60  
BLACK UNCOATED**

**REBAR GRADE 60 ASTM A-615**

SPLICES USED		ABBREVIATIONS		BAR MARK SIZE EQUIVALENT	
<b>CLASS B 4,000 psi UNO</b>		ADD.	= Additional	Imperial	
TOP BARS	OTHER BARS	B.O.W.	= Bottom of wall	Soft Metric	
#3	#3	C.B.	= Corner Bars	#3	#10
#4	#4	DIAG.	= Diagonal	#4	#13
#5	#5	D.O.	= Door Opening	#5	#16
#6	#6	D.W.L.S.	= Dowels	#6	#19
#7	#7	E.F.	= Each Face	#7	#22
#8	#8	E.S.	= Each Side	#8	#25
#9	#9	E.W.	= Each Way	#9	#29
#10	#10	FTG.	= Footing	#10	#32
#11	#11	F.F.	= Far Face	#11	#36
#14	#14	HORIZ.	= Horizontal		
		I.F.	= Inside Face		
		INTERS.	= Intersection		
		L.W.	= Long Way		
		N.F.	= Near Face		
		O.F.	= Outside Face		
		S.W.	= Short Way		
		T&B	= Top & Bottom		
		T.O.W.	= Top of Wall		
		Trans.	= Transverse		
		VERT.	= Vertical		

**ISLAND ROAD-VESPER COUNTY CLUB**  
EAST GUARDWALL AND APPROACH SLAB REINF. DETAILS  
**TYNGSBOROUGH, MA**

CUSTOMER: KODIAK  
DESIGNER: BAYSIDE ENGINEERING

DRAWN BY	DATE	JOB NO	SHEET NO.
SS/MET	09.23.21	M921P1019	R03

