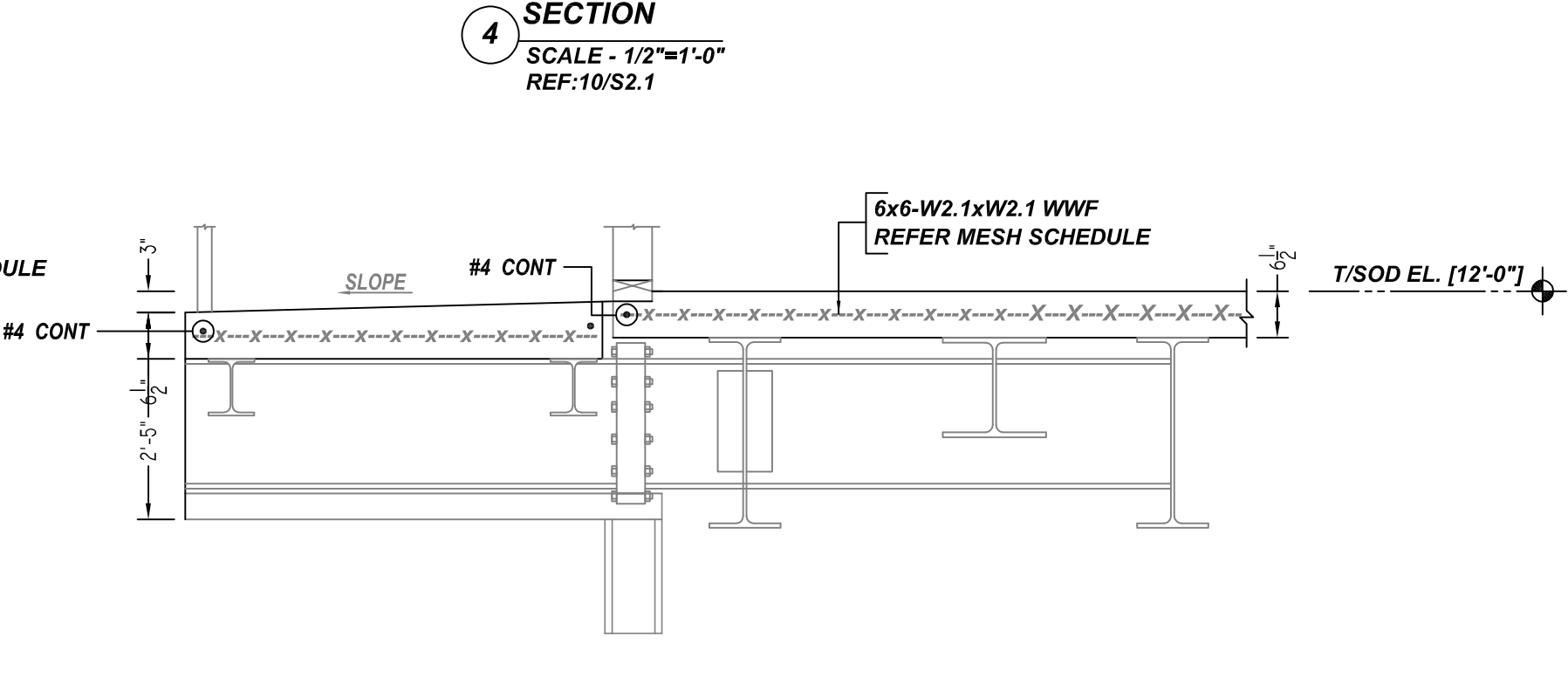
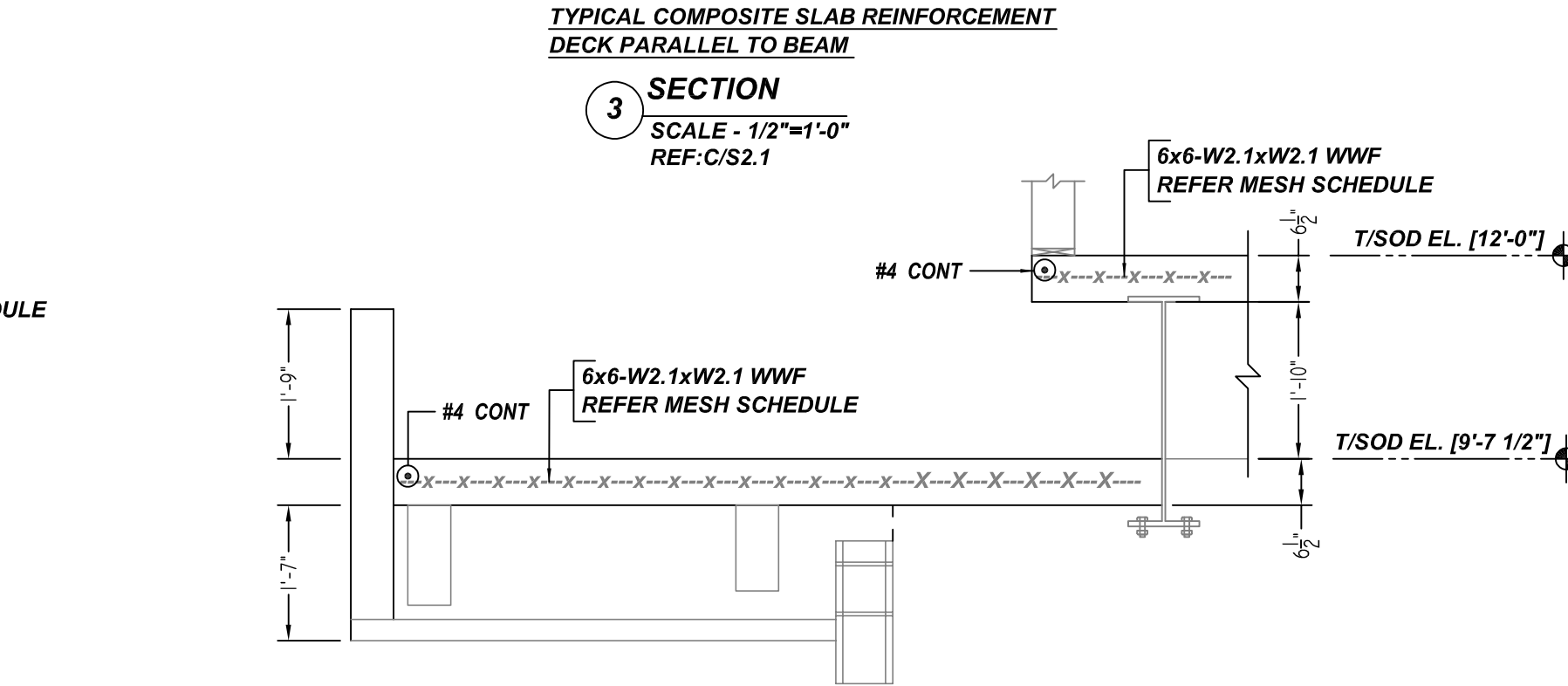
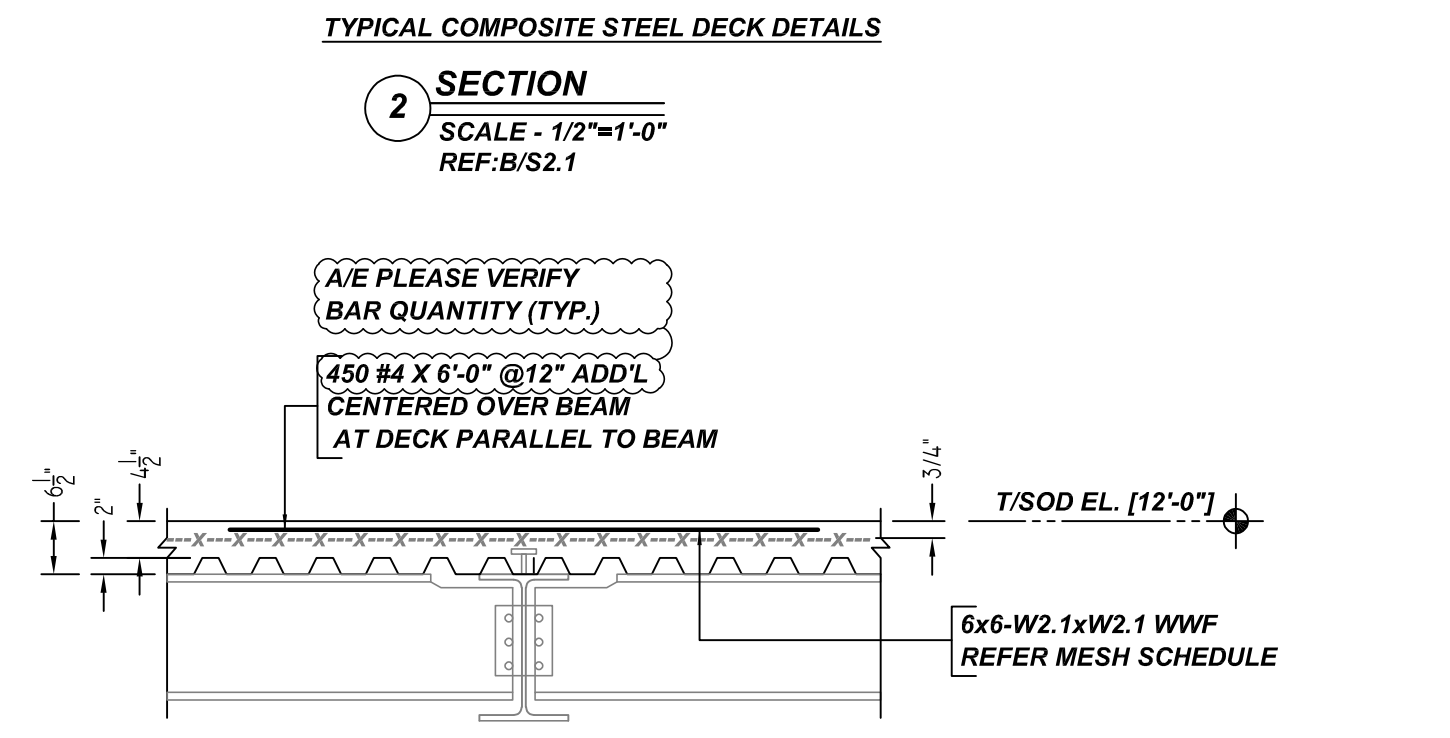
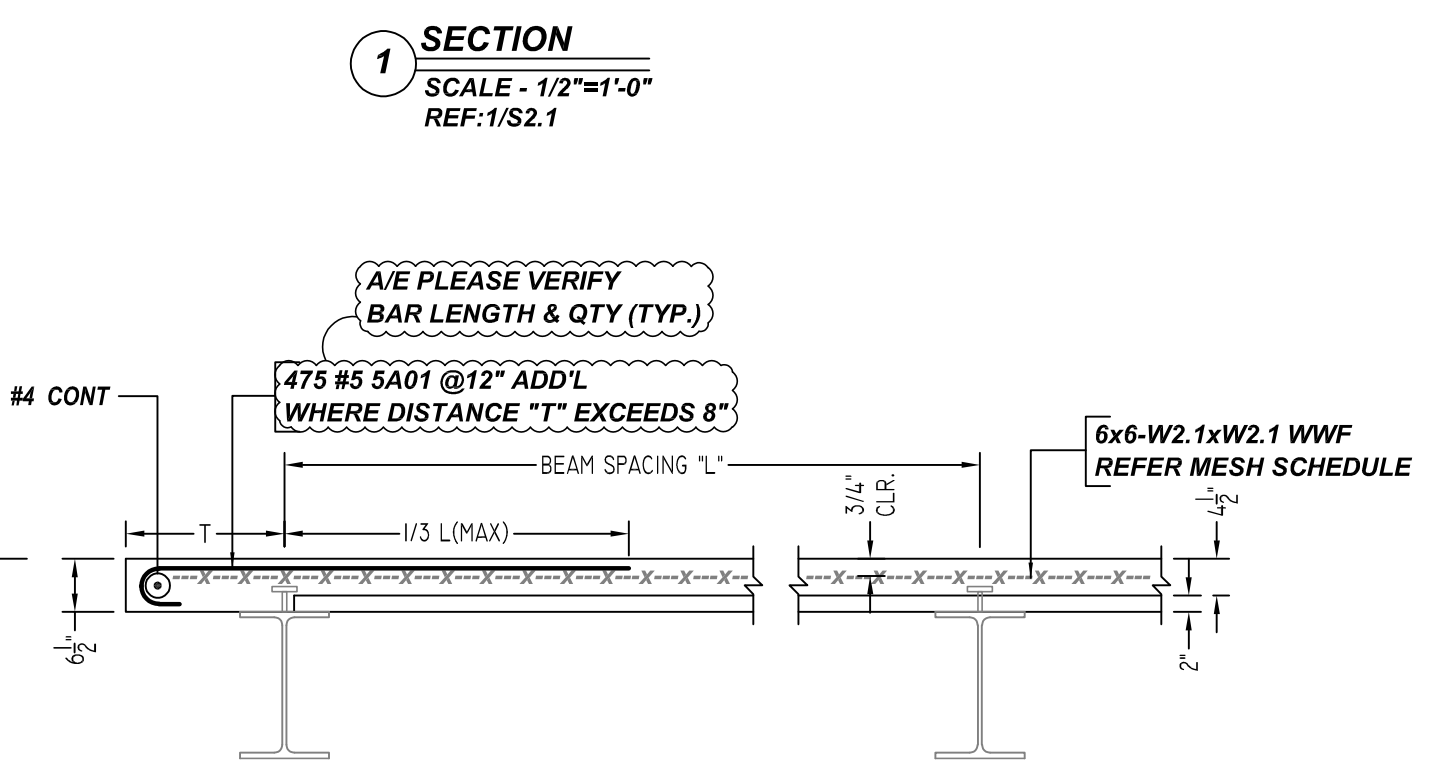
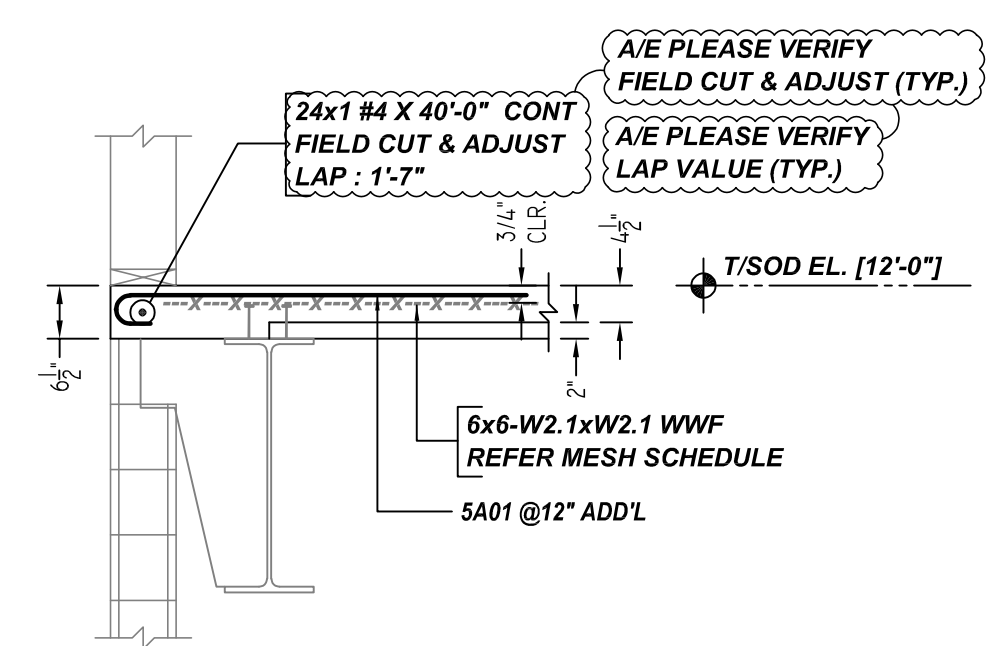
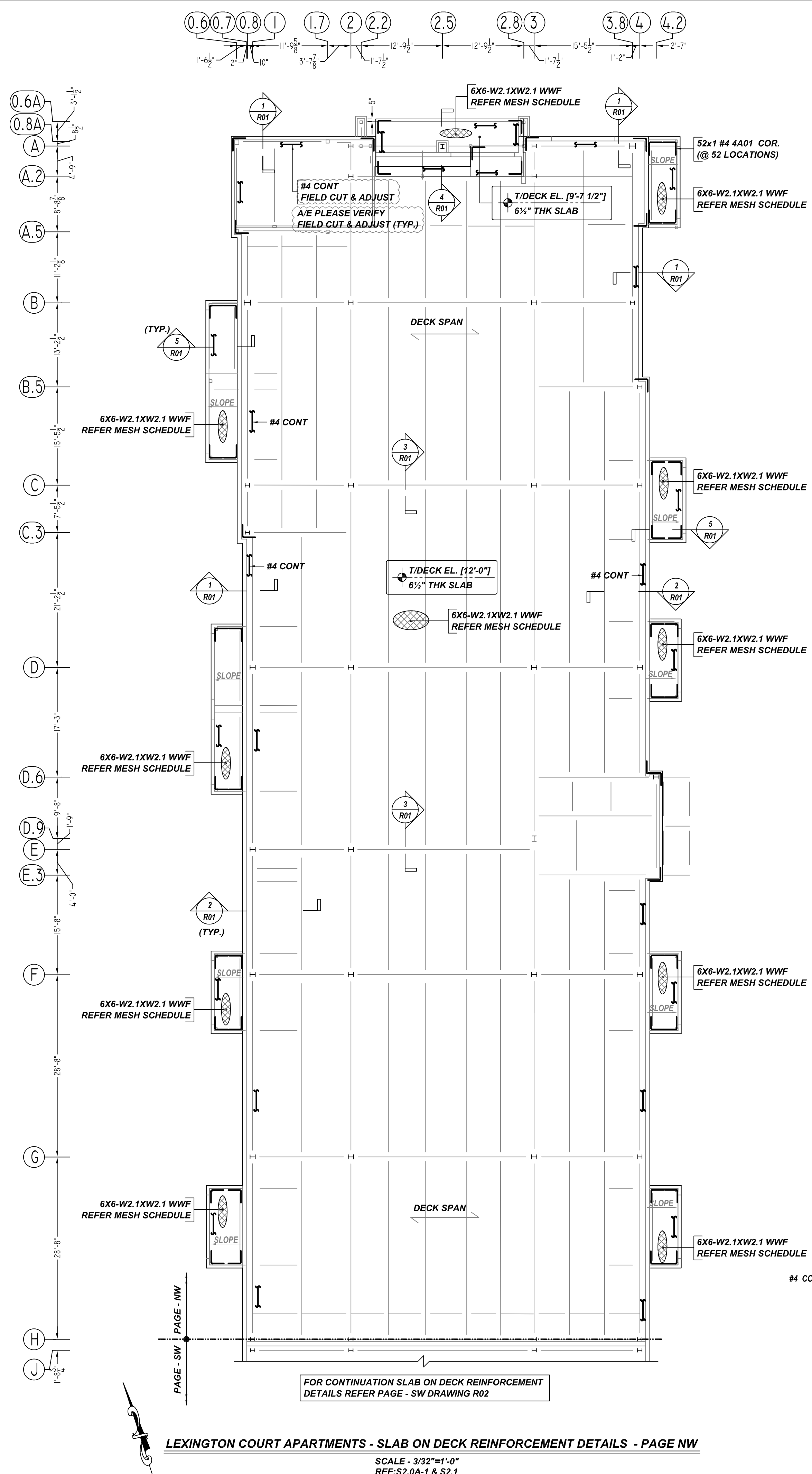


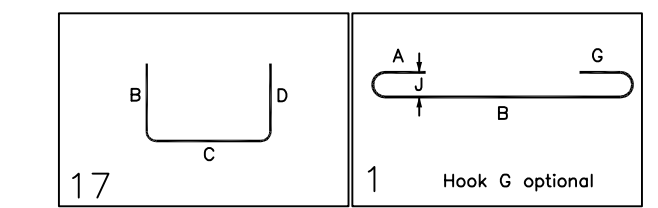
NOTICE

SHORTAGES, IMPROPER FABRICATION OR CLAIMS FOR ANY OTHER REASON MUST BE REPORTED TO THIS COMPANY WITHIN 10 DAYS FROM ORIGINAL DELIVERY. THIS COMPANY ALSO RESERVES THE RIGHT TO FIELD INSPECT MATERIALS PRIOR TO REPLACEMENT OR RECONDITIONING OF MATERIALS AND WILL NOT BE LIABLE FOR CHARGES FROM WORK DONE IN THE FIELD WITHOUT PRIOR AUTHORIZATION FROM THIS COMPANY.

REINFORCING STEEL PLACING DRAWING ONLY. USE IN CONJUNCTION WITH CONTRACT DRAWINGS & SPECIFICATIONS. ELEVATIONS & DIMENSIONS SHOWN ON DRAWING ARE FOR DETAILING PURPOSES ONLY AND SHOULD NOT BE USED FOR CONSTRUCTION UNLESS VERIFIED BY ENGINEER OR CONTRACTOR.



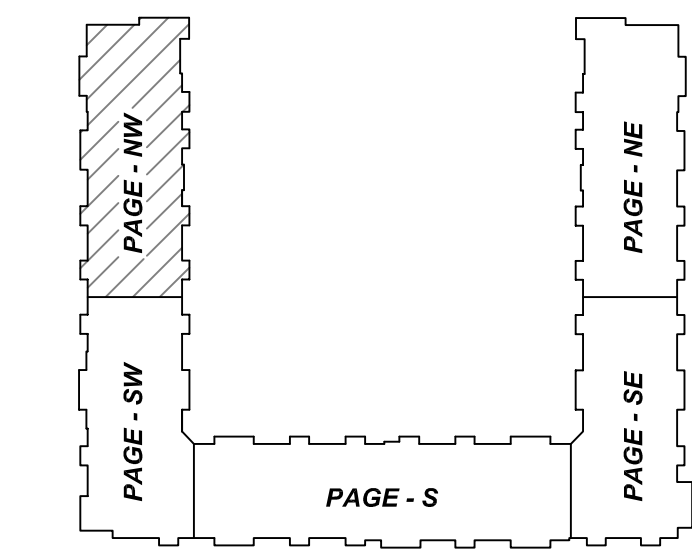
| Bar Mark | Qty | Size | Total Length | Type | X | Y | Z | BENDING DETAILS | | | | | | | | | | | | | | |
|----------|-----|------|--------------|------|-------|---|-------|-----------------|--|--|--|--|--|--|--|--|--|--|--|--|--|--|
| 4A01 | 52 | #4 | 4'-0" | 17 | | | 2'-0" | | | | | | | | | | | | | | | |
| 5A01 | 475 | #5 | 5'-7" | 1 | 0'-7" | | 5'-0" | | | | | | | | | | | | | | | |



| MESH DETAILS | | | | |
|---------------|-------------------|--------|-------------|---|
| ELEMENT | MESH SIZE | SHEETS | AREA | REMARK |
| 6x6" THK SLAB | 6X6-W2.1XW2.1 WWF | 94 | 12996 SQ.FT | 8'-0" X 20'-0" SHEET SIZE (15% LAP ADDED) |

| ACCESSORIES DETAILS | | | | | |
|---------------------|---------------|--------------------------|-----|------|--|
| S. NO | ELEMENT | DESCRIPTION | PCS | LFT | REMARK |
| 1 | 6x6" THK SLAB | 3 1/2" HT SB @ 3'-0" C/C | - | 4388 | BOLSTERS WITH CONT. BOTTOM OF RAILS PLACED PERPENDICULAR TO DECK |

| TYPICAL REINFORCING BAR CLEARANCE TABLE | |
|---|------------|
| LOCATION | MIN. COVER |
| SLAB TOP | 3/4" CLR |
| SLAB EDGE | 2" CLR |



AREA KEY PLAN
SCALE - NTS.

1. A/E PLEASE VERIFY THE ALL CLOUDED DIMENSIONS
2. A/E PLEASE VERIFY THE LAP VALUE WE FOLLOWED
3. A/E PLEASE VERIFY THE COVER DETAILS WE FOLLOWED

| REBAR GRADE 60 ASTM A-615 | | | |
|---------------------------|------------|-------------------------|--------------------------|
| SPLICES USED | | ABBREVIATIONS | BAR MARK SIZE EQUIVALENT |
| CLASS B 4,000 psi UNO | | ADD. = Additional | |
| TOP BARS | OTHER BARS | B.O.W. = Bottom of wall | |
| #3 1'-9" | #3 1'-2" | C.B. = Core Bars | Imperial |
| #4 2'-4" | #4 1'-7" | DIAG. = Diagonal | Soft Metric |
| #5 2'-11" | #5 2'-0" | D.O. = Door Opening | #3 #10 |
| #6 3'-6" | #6 2'-4" | DWL. = Dowels | #4 #13 |
| #7 5'-1" | #7 3'-5" | E.F. = Each Face | #5 #16 |
| #8 5'-9" | #8 3'-10" | E.S. = Each Side | #6 #19 |
| #9 - | #9 - | E.W. = Each Way | #7 #22 |
| #10 - | #10 - | FTG. = Footing | #8 #25 |
| #11 - | #11 - | F.F. = Far Face | #9 #29 |
| #14 - | #14 - | HORIZ. = Horizontal | #10 #32 |
| | | I.F. = Inside Face | #11 #36 |
| | | INTERS. = Intersection | |
| | | L.W. = long Way | |
| | | N.F. = Near Face | |
| | | O.F. = Outside Face | |
| | | S.W. = Short Way | |
| | | T&B = Top & Bottom | |
| | | T.O.W. = Top of Wall | |
| | | Trans. = Transverse | |
| | | VERT. = Vertical | |

SLATE AT MERRIMACK
 LEXINGTON COURT APARTMENTS - SLAB ON DECK REINFORCEMENT DETAILS - PAGE NW
MERRIMACK, NEW HAMPSHIRE 03054
 CUSTOMER: DEX BY TERRA
 DESIGNER: SUMMIT ENGINEERING
 DRAWN BY: MSK/MET DATE: 07.19.21 JOB NO: M921P812 SHEET NO: R01

| REV NO | DATE | APPROVAL | SENT FOR | REV NO | DATE | SENT FOR |
|--------|----------|----------|----------|--------|------|----------|
| 0 | 07.19.21 | | | | | |

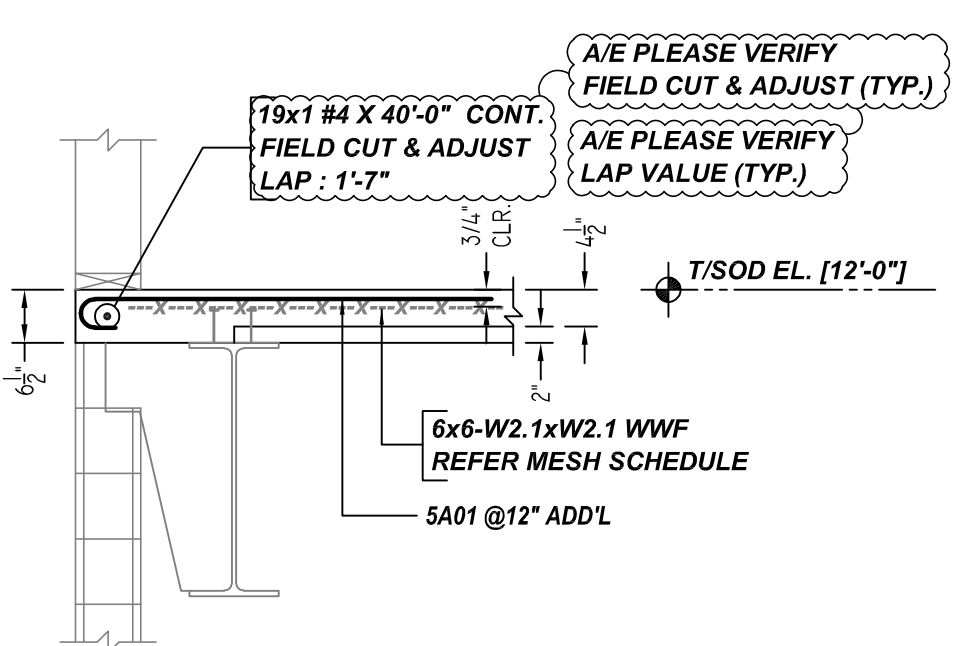
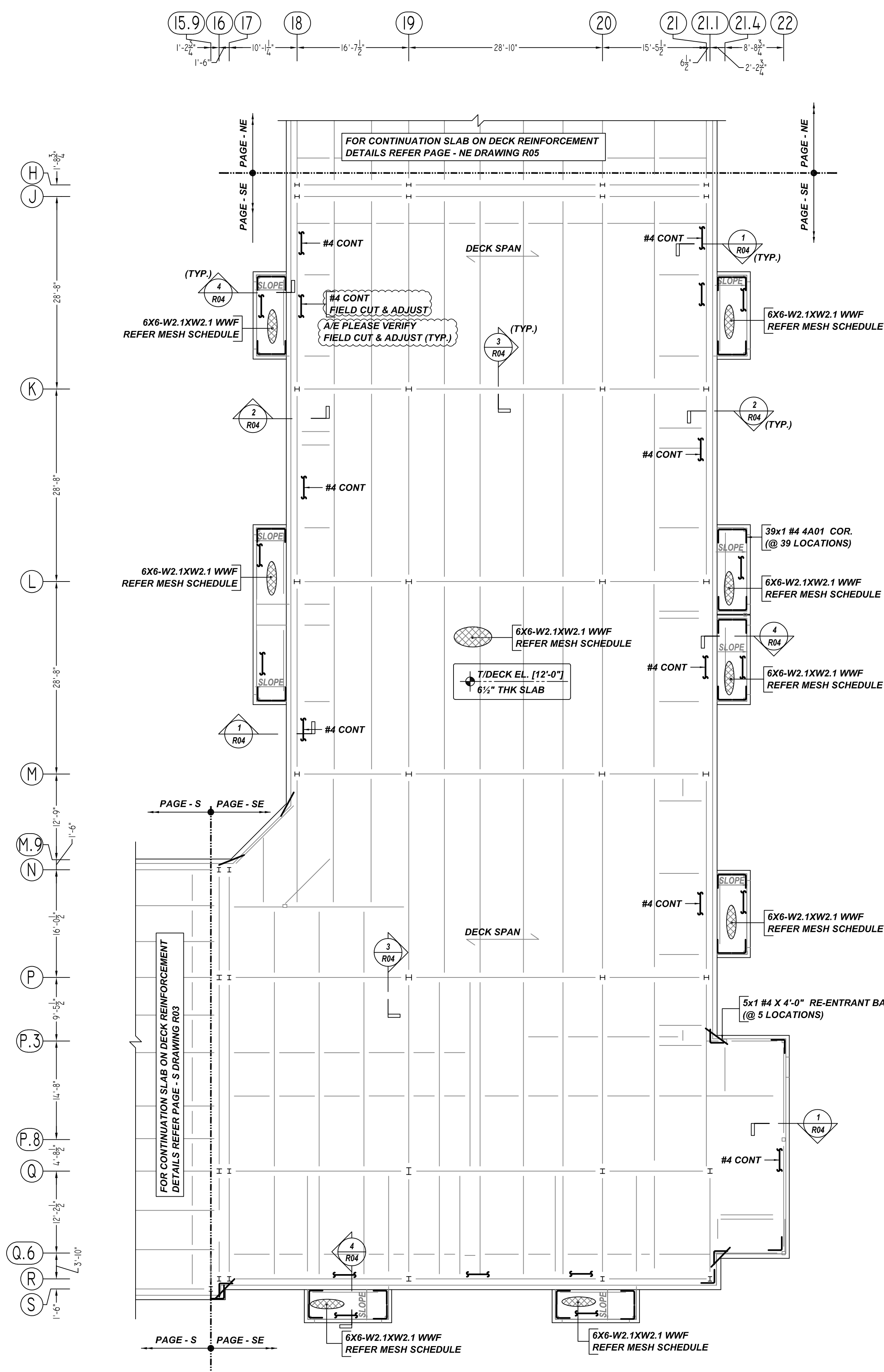
LEXINGTON COURT APARTMENTS - SLAB ON DECK REINFORCEMENT DETAILS - PAGE NW
 SCALE - 3/32"=1'-0"
 REF: S2.0A-1 & S2.1

FOR CONTINUATION SLAB ON DECK REINFORCEMENT DETAILS REFER PAGE - SW DRAWING R02

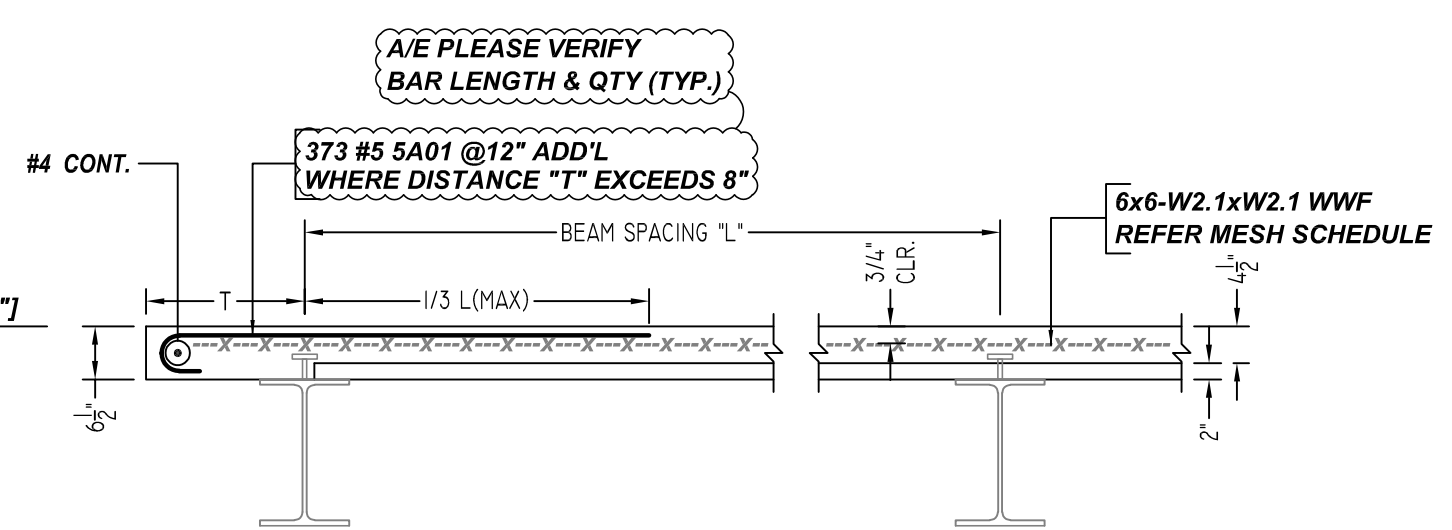
NOTICE

SHORTAGES, IMPROPER FABRICATION OR CLAIMS FOR ANY OTHER REASON MUST BE REPORTED TO THIS COMPANY WITHIN 10 DAYS FROM ORIGINAL DELIVERY. THIS COMPANY ALSO RESERVES THE RIGHT TO FIELD INSPECT MATERIALS PRIOR TO REPLACEMENT OR RECONDITIONING OF MATERIALS AND WILL NOT BE LIABLE FOR CHARGES FROM WORK DONE IN THE FIELD WITHOUT PRIOR AUTHORIZATION FROM THIS COMPANY.

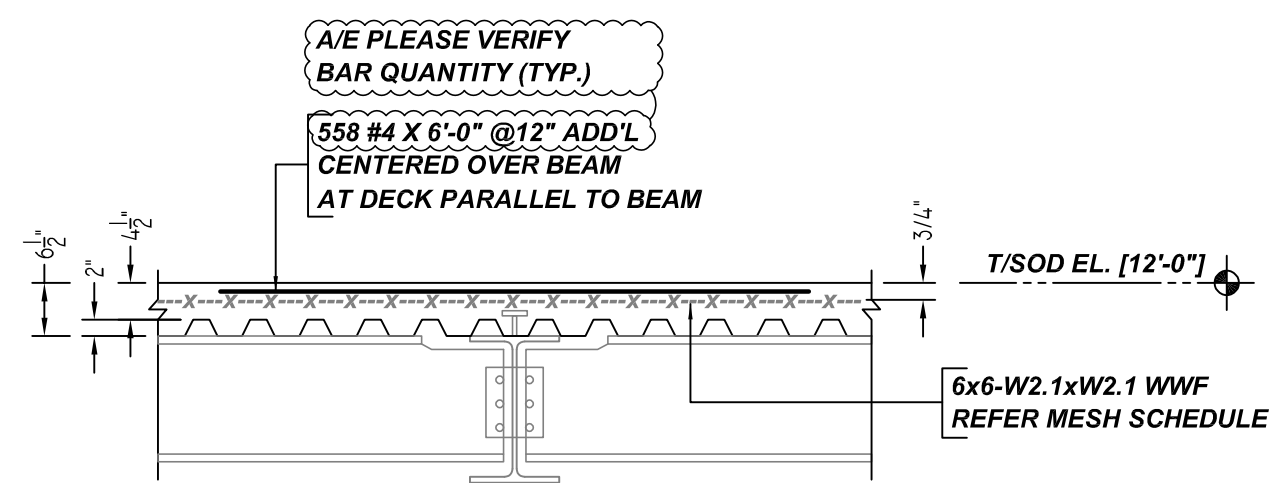
REINFORCING STEEL PLACING DRAWING ONLY. USE IN CONJUNCTION WITH CONTRACT DRAWINGS & SPECIFICATIONS. ELEVATIONS & DIMENSIONS SHOWN ON DRAWING ARE FOR DETAILING PURPOSES ONLY AND SHOULD NOT BE USED FOR CONSTRUCTION UNLESS VERIFIED BY ENGINEER OR CONTRACTOR.



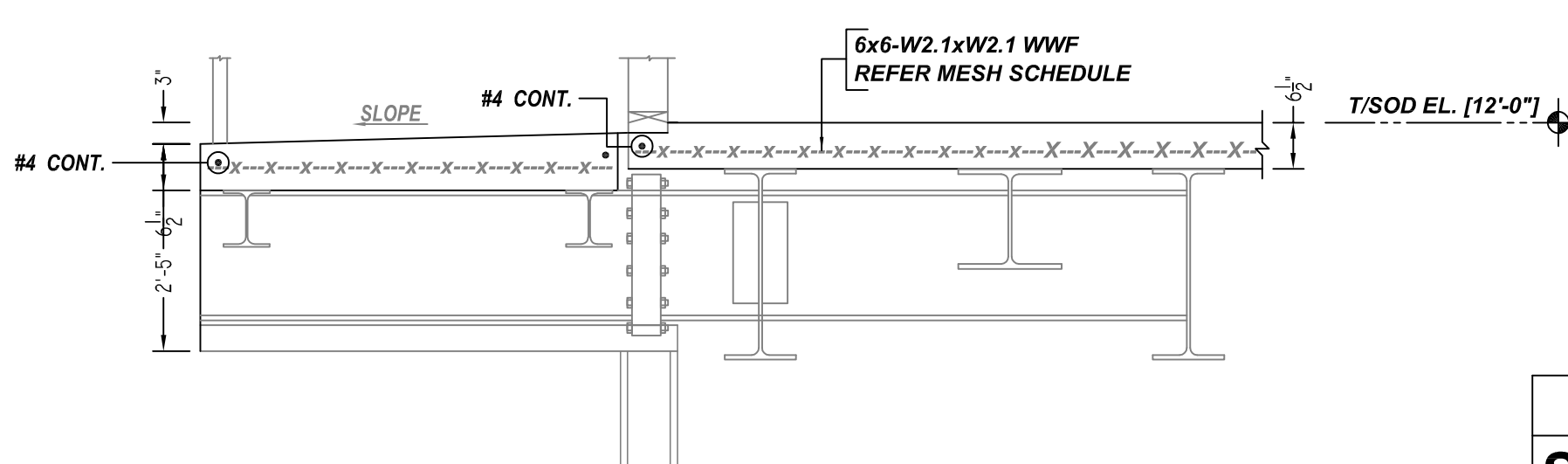
SECTION 1
SCALE - 1/2"=1'-0"
REF: 1/S2.1



SECTION 2
SCALE - 1/2"=1'-0"
REF: B/S2.1

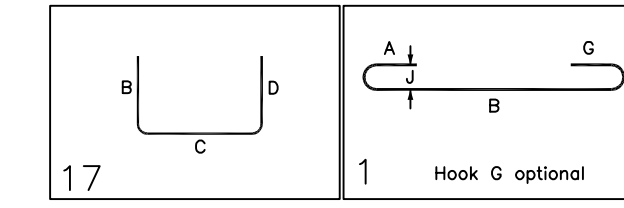


SECTION 3
SCALE - 1/2"=1'-0"
REF: C/S2.1



SECTION 4
SCALE - 1/2"=1'-0"
REF: 8/S2.1

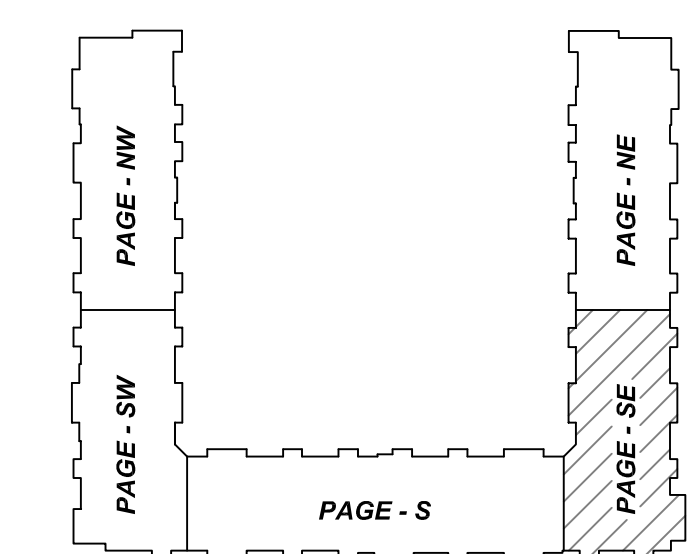
| Rebar Number | RM | Qty | Size | Total Length | Type | X | Y | Z | W | V | U | T | S | R | Q | P | O | N | M | L | K | J | I | H | G | F | E | D | C | B | A |
|--------------|-----|-----|------|--------------|------|---|---|---|---|---|---|---|---|---|---|---|---|---|---|---|---|---|---|---|---|---|---|---|---|---|---|
| 401 | 38 | 4 | 4-0" | 17 | | | | | | | | | | | | | | | | | | | | | | | | | | | |
| 501 | 373 | 5 | 5-7" | 1 | | | | | | | | | | | | | | | | | | | | | | | | | | | |



| MESH DETAILS | | | | |
|-----------------|-------------------|--------|-------------|--|
| ELEMENT | MESH SIZE | SHEETS | AREA | REMARK |
| 6 1/2" THK SLAB | 6X6-W2.1XW2.1 WWF | 90 | 12362 SQ.FT | 8'-0 X 20'-0" SHEET SIZE (15% LAP ADDED) |

| ACCESSORIES DETAILS | | | | | |
|---------------------|-----------------|-------------------------|-----|------|--|
| S. NO | ELEMENT | DESCRIPTION | PCS | LFT | REMARK |
| 1 | 6 1/2" THK SLAB | 3 1/2" HT SB @3'-0" C/C | - | 4166 | BOLSTERS WITH CONT. BOTTOM OF RAILS PLACED PERPENDICULAR TO DECK |

| TYPICAL REINFORCING BAR CLEARANCE TABLE | |
|---|------------|
| LOCATION | MIN. COVER |
| SLAB TOP | 3/4" CLR |
| SLAB EDGE | 2" CLR |



AREA KEY PLAN
SCALE - NTS.

1. A/E PLEASE VERIFY THE ALL CLOUDED DIMENSIONS
2. A/E PLEASE VERIFY THE LAP VALUE WE FOLLOWED
3. A/E PLEASE VERIFY THE COVER DETAILS WE FOLLOWED

| REBAR GRADE 60 ASTM A-615 | | | |
|---------------------------|------------|-------------------------|--------------------------|
| SPLICES USED | | ABBREVIATIONS | BAR MARK SIZE EQUIVALENT |
| CLASS B 4,000 psi UNO | | ADD. = Additional | |
| TOP BARS | OTHER BARS | B.O.W. = Bottom of wall | |
| #3 1'-9" | #3 1'-2" | C.B. = Corrus Bars | Imperial Soft Metric |
| #4 2'-4" | #4 1'-7" | DIAG. = Diagonal | #3 #10 |
| #5 2'-11" | #5 2'-0" | D.O. = Door Opening | #4 #13 |
| #6 3'-6" | #6 2'-4" | DWLS. = Dowels | #5 #16 |
| #7 5'-1" | #7 3'-5" | E.F. = Each Face | #6 #19 |
| #8 5'-9" | #8 3'-10" | E.S. = Each Side | #7 #22 |
| #9 - | #9 - | E.W. = Each Way | #8 #25 |
| #10 - | #10 - | FTG. = Footing | #9 #29 |
| #11 - | #11 - | F.F. = Far Face | #10 #32 |
| #14 - | #14 - | HORIZ. = Horizontal | #11 #36 |
| | | I.F. = Inside Face | |
| | | INTERS. = Intersection | |
| | | L.W. = Long Way | |
| | | N.F. = Near Face | |
| | | O.F. = Outside Face | |
| | | S.W. = Short Way | |
| | | T&B = Top & Bottom | |
| | | T.O.W. = Top of Wall | |
| | | Trans. = Transverse | |
| | | VERT. = Vertical | |

SLATE AT MERRIMACK
LEXINGTON COURT APARTMENTS - SLAB ON DECK REINFORCEMENT DETAILS - PAGE SE
MERRIMACK, NEW HAMPSHIRE 03054
CUSTOMER: DEX BY TERRA
DESIGNER: SUMMIT ENGINEERING

| | | | |
|----------|----------|----------|-----------|
| DRAWN BY | DATE | JOB NO | SHEET NO. |
| MSK/MET | 07.19.21 | M921P812 | R04 |

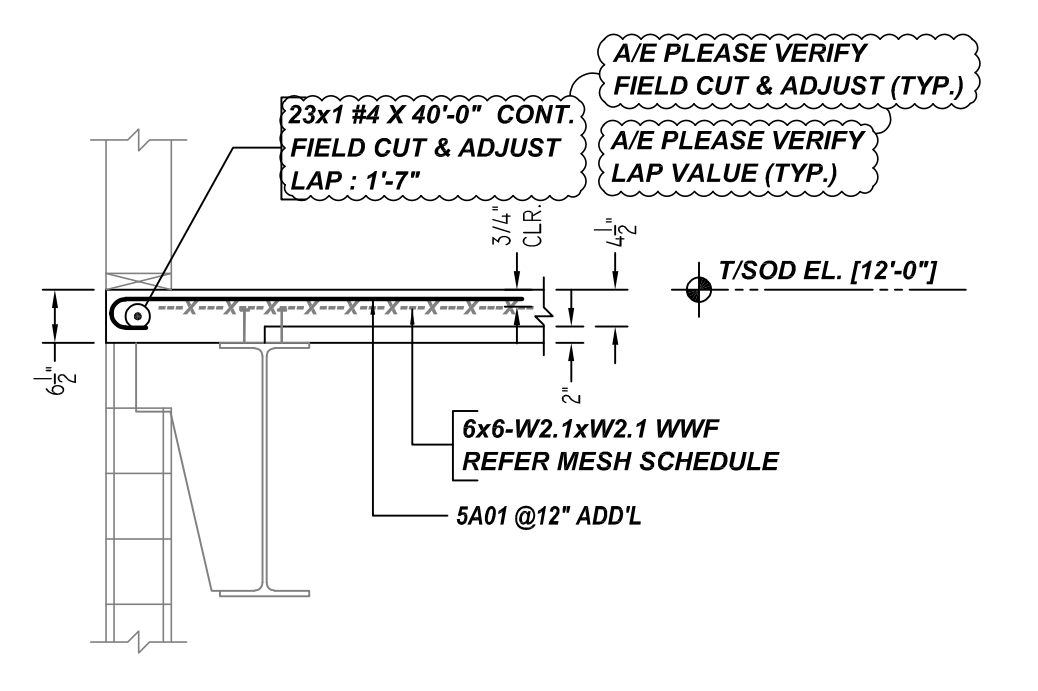
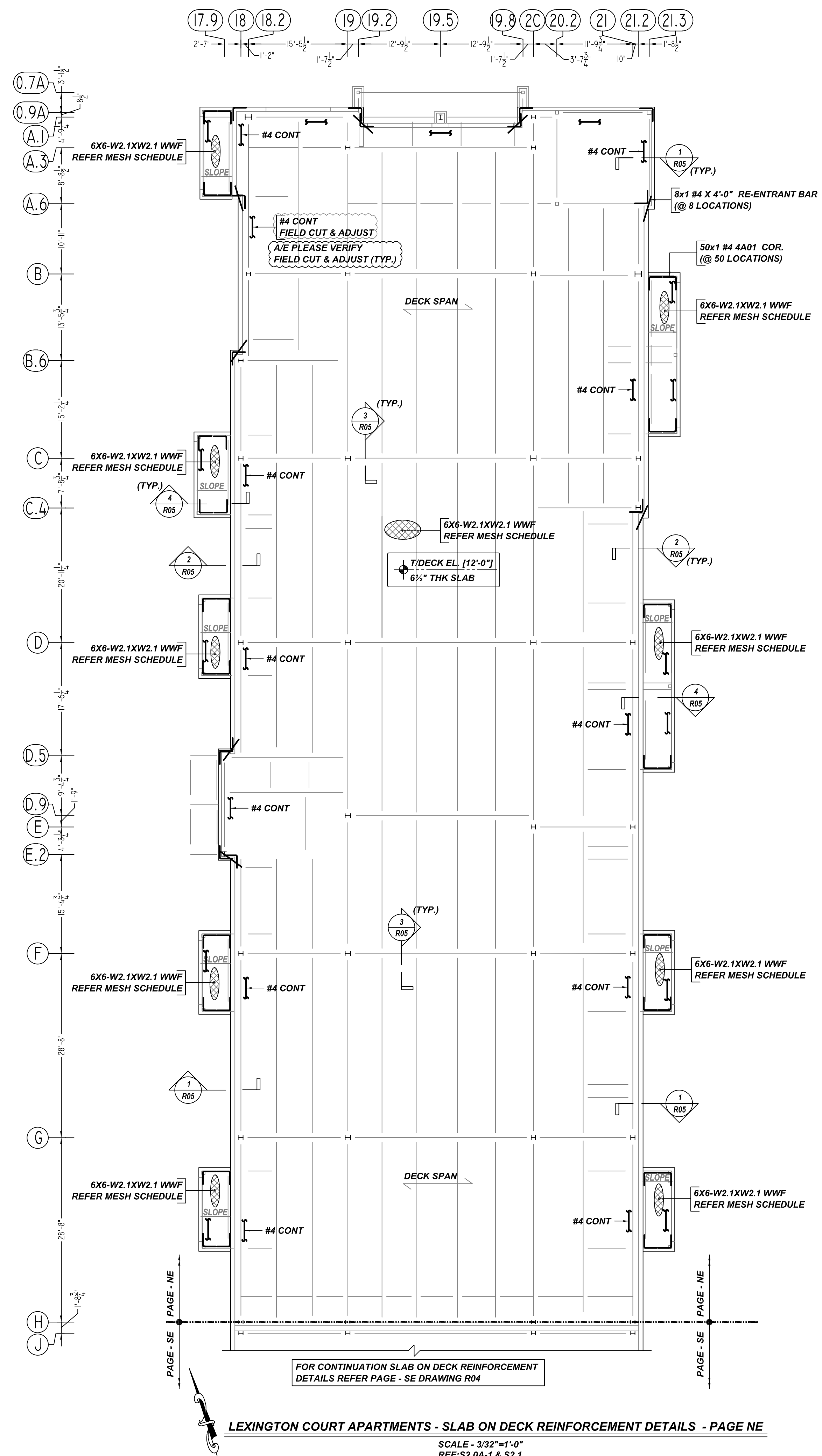
| | | | | | |
|--------|----------|----------|--------|------|----------|
| REV NO | DATE | APPROVAL | REV NO | DATE | SENT FOR |
| 0 | 07.19.21 | | | | |

LEXINGTON COURT APARTMENTS - SLAB ON DECK REINFORCEMENT DETAILS - PAGE SE
SCALE - 3/32"=1'-0"
REF: S2.0A-1 & S2.1

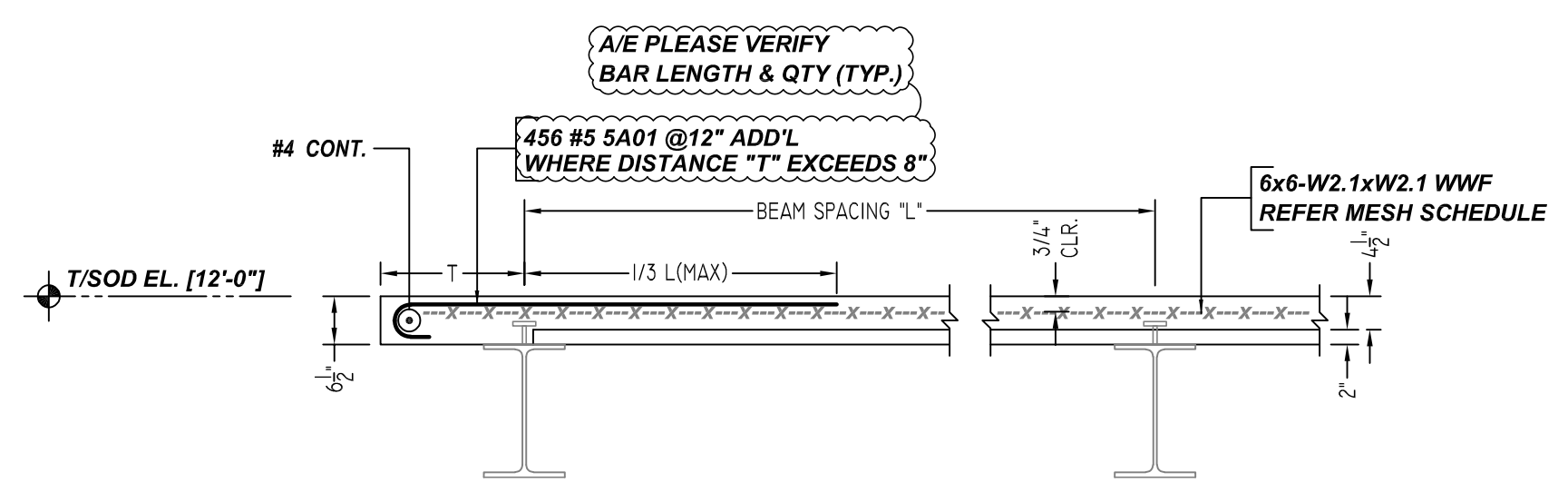
NOTICE

SHORTAGES, IMPROPER FABRICATION OR CLAIMS FOR ANY OTHER REASON MUST BE REPORTED TO THIS COMPANY WITHIN 10 DAYS FROM ORIGINAL DELIVERY. THIS COMPANY ALSO RESERVES THE RIGHT TO FIELD INSPECT MATERIALS PRIOR TO REPLACEMENT OR RECONDITIONING OF MATERIALS AND WILL NOT BE LIABLE FOR CHARGES FROM WORK DONE IN THE FIELD WITHOUT PRIOR AUTHORIZATION FROM THIS COMPANY.

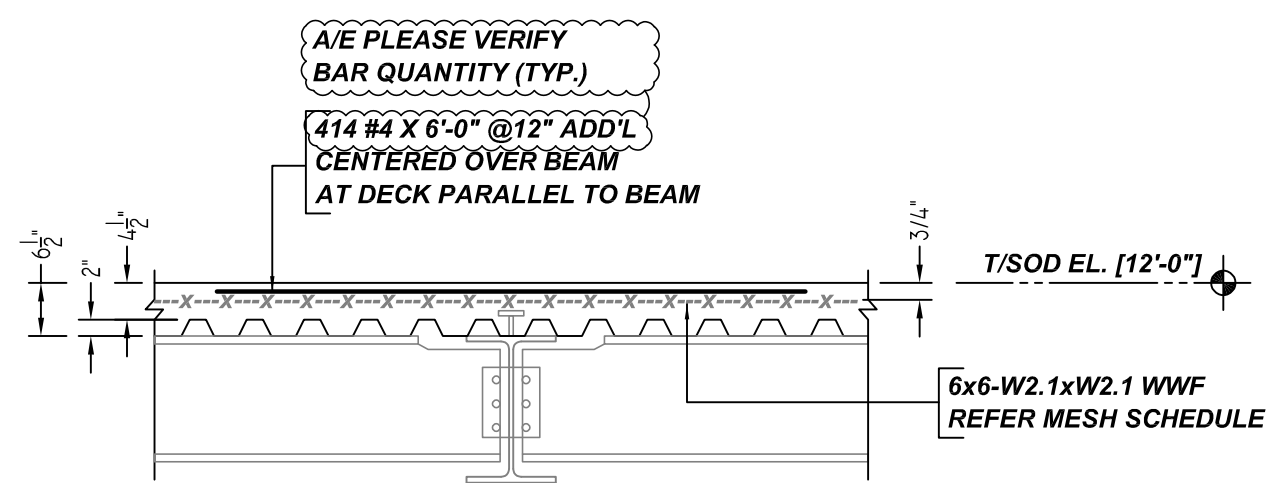
REINFORCING STEEL PLACING DRAWING ONLY. USE IN CONJUNCTION WITH CONTRACT DRAWINGS & SPECIFICATIONS. ELEVATIONS & DIMENSIONS SHOWN ON DRAWING ARE FOR DETAILING PURPOSES ONLY AND SHOULD NOT BE USED FOR CONSTRUCTION UNLESS VERIFIED BY ENGINEER OR CONTRACTOR.



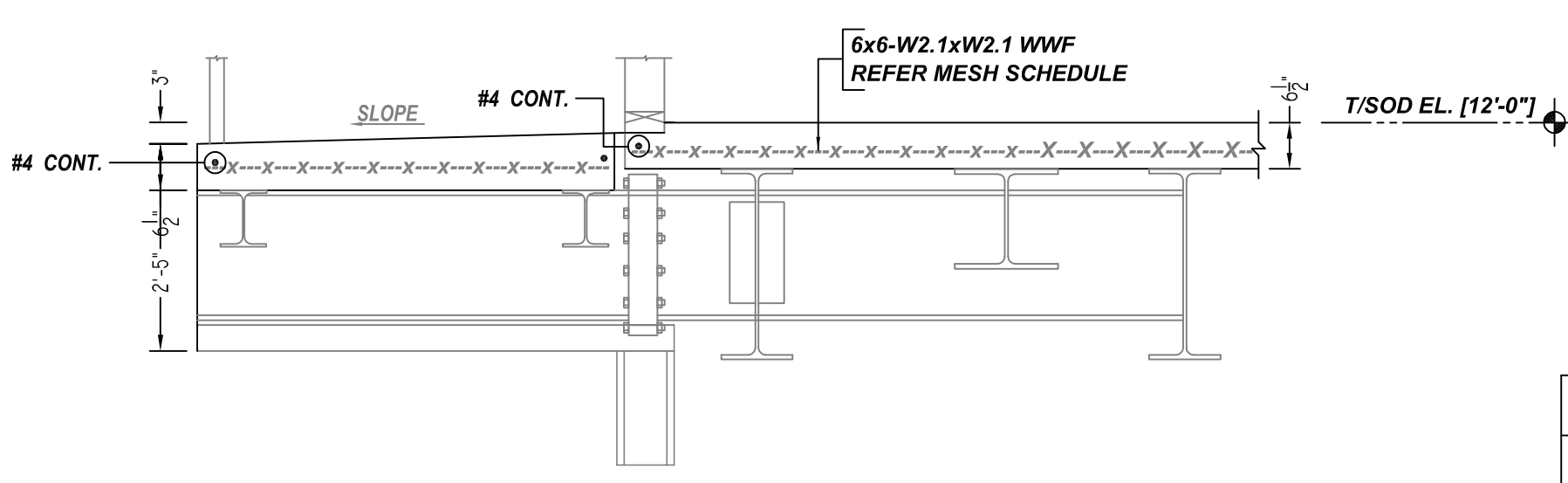
SECTION 1
SCALE - 1/2"=1'-0"
REF: 1/S2.1



SECTION 2
SCALE - 1/2"=1'-0"
REF: B/S2.1

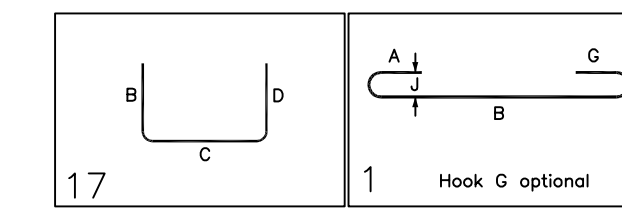


SECTION 3
SCALE - 1/2"=1'-0"
REF: C/S2.1



SECTION 4
SCALE - 1/2"=1'-0"
REF: 3/S2.1

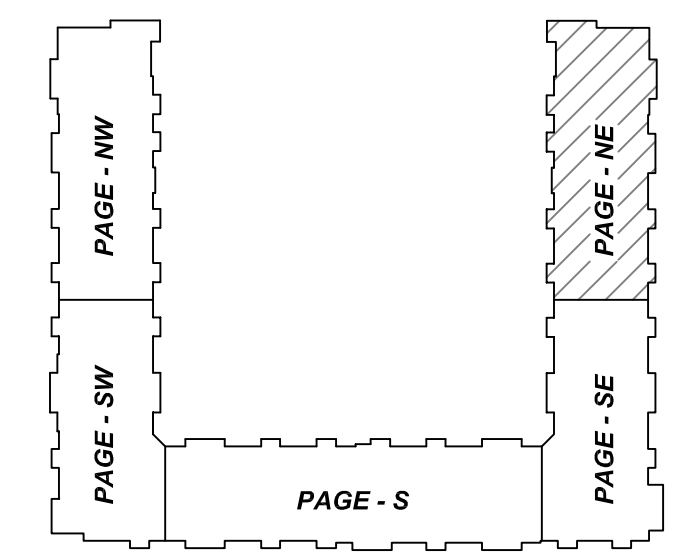
| Bar Mark | Qty | Size | Total Length | Type | X | Y | Z | W | V | U | T | S | R | Q | P | O | N | M | L | K | J | I | H | G | F | E | D | C | B | A |
|----------|-----|------|--------------|------|-------|-------|---|---|---|---|---|---|---|---|---|---|---|---|---|---|---|---|---|---|---|---|---|---|---|---|
| 4A01 | 50 | #4 | 4'-0" | 17 | | | | | | | | | | | | | | | | | | | | | | | | | | |
| 5A01 | 456 | #5 | 5'-7" | 1 | 0'-7" | 5'-0" | | | | | | | | | | | | | | | | | | | | | | | | |



| ELEMENT | MESH SIZE | SHEETS | AREA | REMARK |
|-----------------|-------------------|--------|-------------|---|
| 6 1/2" THK SLAB | 6X6-W2.1XW2.1 WWF | 93 | 12848 SQ.FT | 8'-0" X 20'-0" SHEET SIZE (15% LAP ADDED) |

| S. NO | ELEMENT | DESCRIPTION | PCS | LFT | REMARK |
|-------|-----------------|-------------------------|-----|------|--|
| 1 | 6 1/2" THK SLAB | 3 3/4" HT SB @3'-0" C/C | - | 4347 | BOLSTERS WITH CONT. BOTTOM OF RAILS PLACED PERPENDICULAR TO DECK |

| LOCATION | MIN. COVER |
|-----------|------------|
| SLAB TOP | 3/4" CLR |
| SLAB EDGE | 2" CLR |



AREA KEY PLAN
SCALE - NTS.

1. A/E PLEASE VERIFY THE ALL CLOUDED DIMENSIONS
2. A/E PLEASE VERIFY THE LAP VALUE WE FOLLOWED
3. A/E PLEASE VERIFY THE COVER DETAILS WE FOLLOWED

| REBAR GRADE 60 ASTM A-615 | | | |
|---------------------------|------------|-------------------------|--------------------------|
| SPLICES USED | | ABBREVIATIONS | BAR MARK SIZE EQUIVALENT |
| CLASS B 4,000 psi UNO | | ADD. = Additional | Imperial |
| TOP BARS | OTHER BARS | B.O.W. = Bottom of wall | Soft Metric |
| #3 1'-9" | #3 1'-2" | C.B. = Corner Bars | #3 #10 |
| #4 2'-4" | #4 1'-7" | DIAG. = Diagonal | #4 #13 |
| #5 2'-11" | #5 2'-0" | D.O. = Door Opening | #5 #16 |
| #6 3'-6" | #6 2'-4" | DWLS. = Dowels | #6 #19 |
| #7 5'-1" | #7 3'-5" | E.F. = Each Face | #7 #22 |
| #8 5'-9" | #8 3'-10" | E.S. = Each Side | #8 #25 |
| #9 - | #9 - | E.W. = Each Way | #9 #29 |
| #10 - | #10 - | FTG. = Footing | #10 #32 |
| #11 - | #11 - | F.F. = Far Face | #11 #36 |
| #14 - | #14 - | HORIZ. = Horizontal | |
| | | I.F. = Inside Face | |
| | | INTERS. = Intersection | |
| | | L.W. = long Way | |
| | | N.F. = Near Face | |
| | | O.F. = Outside Face | |
| | | S.W. = Short Way | |
| | | T&B = Top & Bottom | |
| | | T.O.W. = Top of Wall | |
| | | Trans. = Transverse | |
| | | VERT. = Vertical | |

SLATE AT MERRIMACK
LEXINGTON COURT APARTMENTS - SLAB ON DECK REINFORCEMENT DETAILS - PAGE NE
MERRIMACK, NEW HAMPSHIRE 03054
CUSTOMER: DEX BY TERRA
DESIGNER: SUMMIT ENGINEERING

| | | | | | | | | | |
|--------|----------|----------|--------|------|----------|----------|----------|----------|-----------|
| 0 | 07.19.21 | APPROVAL | | | | DRAWN BY | DATE | JOB NO | SHEET NO. |
| REV NO | DATE | SENT FOR | REV NO | DATE | SENT FOR | MSK/MET | 07.19.21 | M921P812 | R05 |