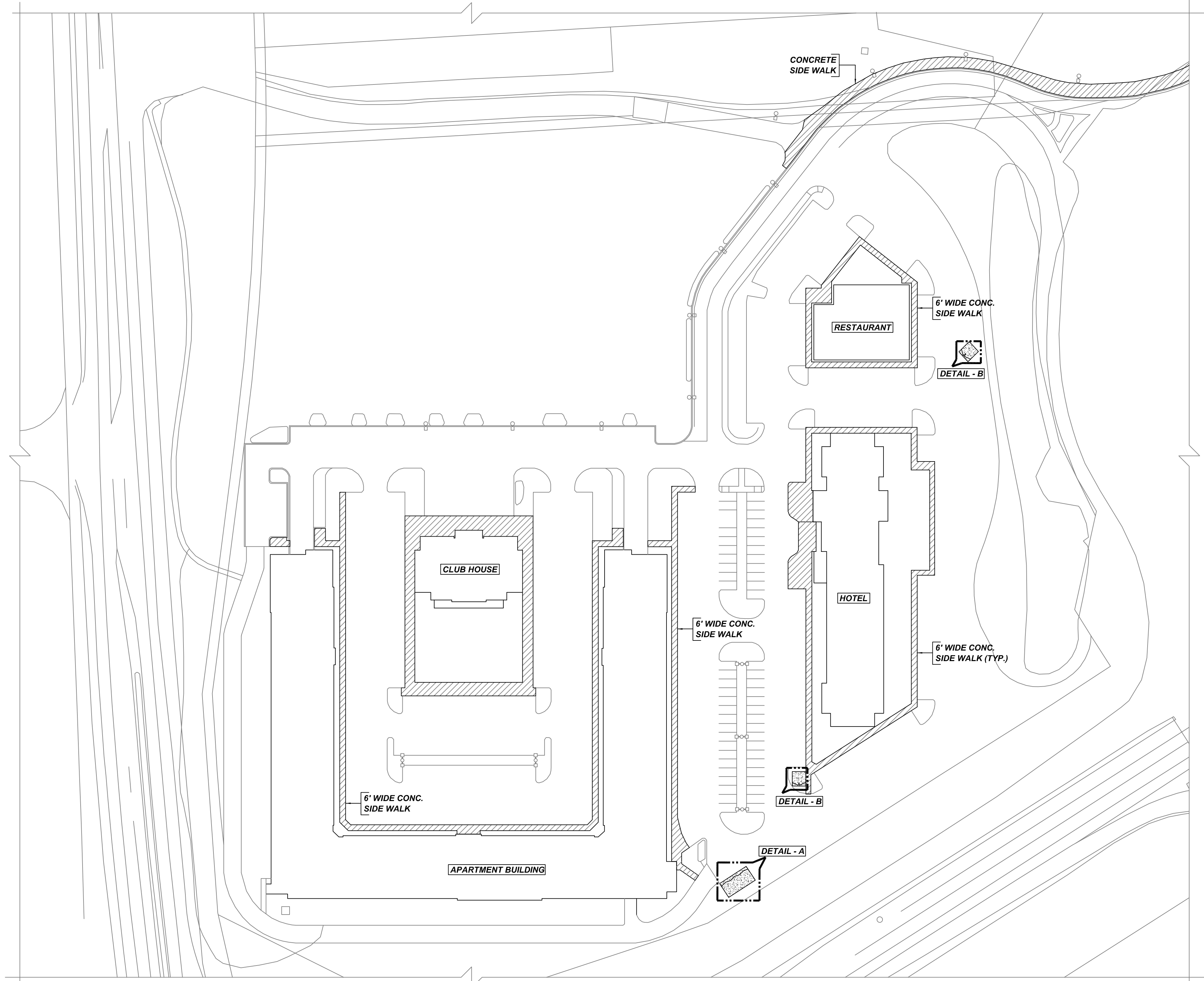


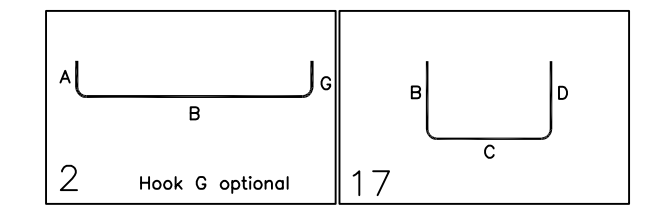
**NOTICE**  
 SHORTAGES, IMPROPER FABRICATION OR CLAIMS FOR ANY OTHER REASON MUST BE REPORTED TO THIS COMPANY WITHIN 10 DAYS FROM ORIGINAL DELIVERY. THIS COMPANY ALSO RESERVES THE RIGHT TO FIELD INSPECT MATERIALS PRIOR TO REPLACEMENT OR RECONDITIONING OF MATERIALS AND WILL NOT BE LIABLE FOR CHARGES FROM WORK DONE IN THE FIELD WITHOUT PRIOR AUTHORIZATION FROM THIS COMPANY.

REINFORCING STEEL PLACING DRAWING ONLY. USE IN CONJUNCTION WITH CONTRACT DRAWINGS & SPECIFICATIONS. ELEVATIONS & DIMENSIONS SHOWN ON DRAWING ARE FOR DETAILING PURPOSES ONLY AND SHOULD NOT BE USED FOR CONSTRUCTION UNLESS VERIFIED BY ENGINEER OR CONTRACTOR.



Release Number: R44

Bar Mark	Qty	Size	Total Length	Type	X'	Y'	Z'	V'	U'	W'	V'	U'	W'	V'	U'	W'	
4701	22	#4	15'-7"	2	0'-8"	14'-3"											
4702	24	#4	14'-7"	2	0'-8"	13'-3"											
4703	14	#4	37'-10"	2	0'-8"	31'-6"											
4704	25	#4	17'-7"	2	0'-8"	16'-3"											
4705	12	#4	4'-0"	17	2'-0"	2'-0"											

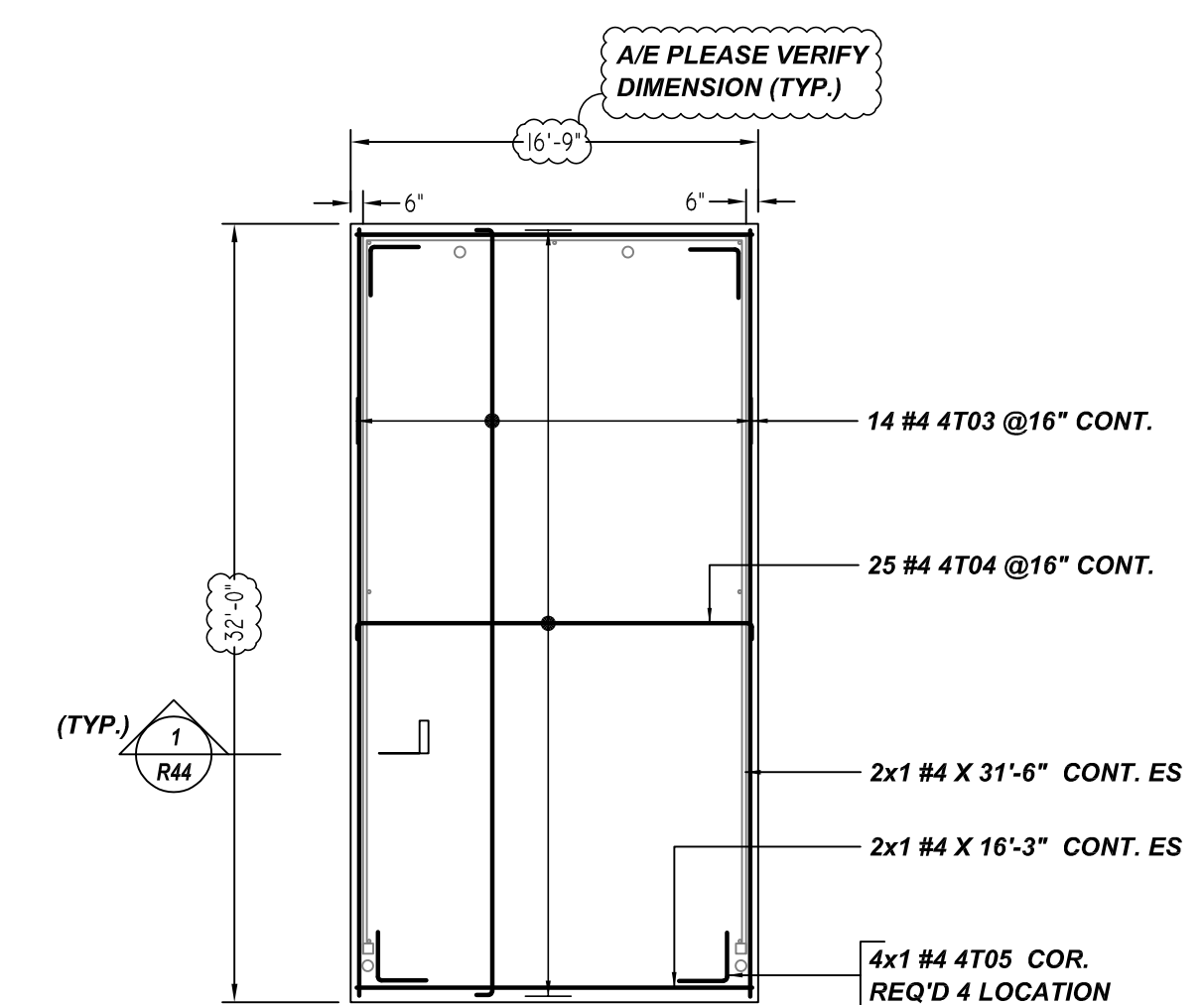


ELEMENT	MESH SIZE	SHEETS	AREA	REMARK
4" THK CONCRETE SIDE WALK	W/ 6X6-W1.4XW1.4 WWM	232	32068 SQ.FT	8'-0 X 20'-0" SHEET SIZE (15% LAP ADDED)

TYPICAL REINFORCING BAR CLEARANCE TABLE	
LOCATION	MIN. COVER
TOP & BOTTOM	3" CLR
SIDE	3" CLR

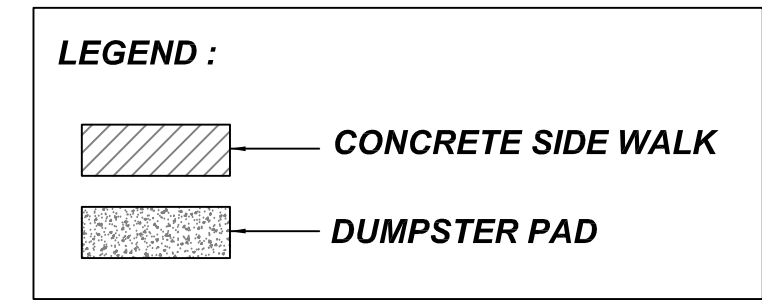
A/E PLEASE VERIFY COVER DETAILS (TYP.)

**ALL BARS IN THIS DRAWING  
 ASTM A615 GRADE 60  
 BLACK UNCOATED**

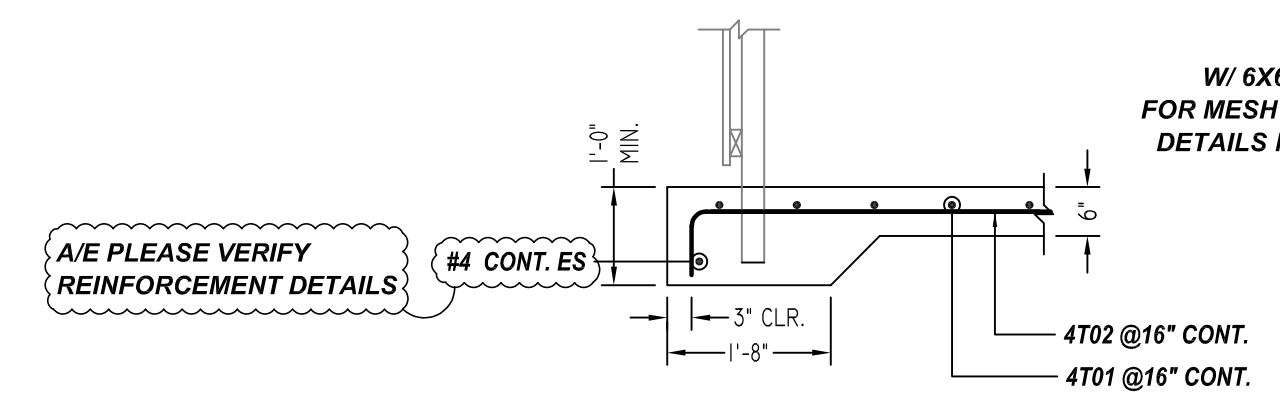


**DUMPSTER PAD ENCLOSURE DETAILS  
 DETAIL - A**  
 SCALE 1/8"=1'-0"  
 REF: C-3 & C-7

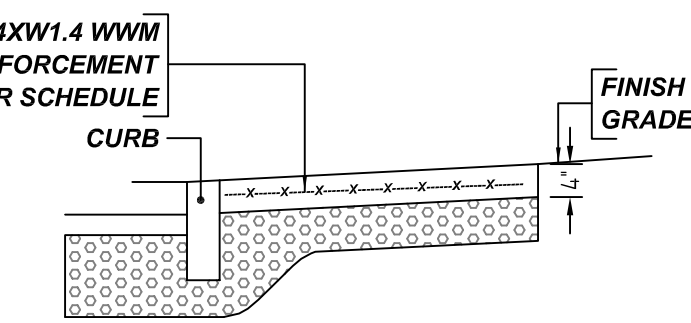
**SITE WORK REINFORCEMENT DETAILS**  
 SCALE 1/8"=1'-0"  
 REF: C-3 & C-7



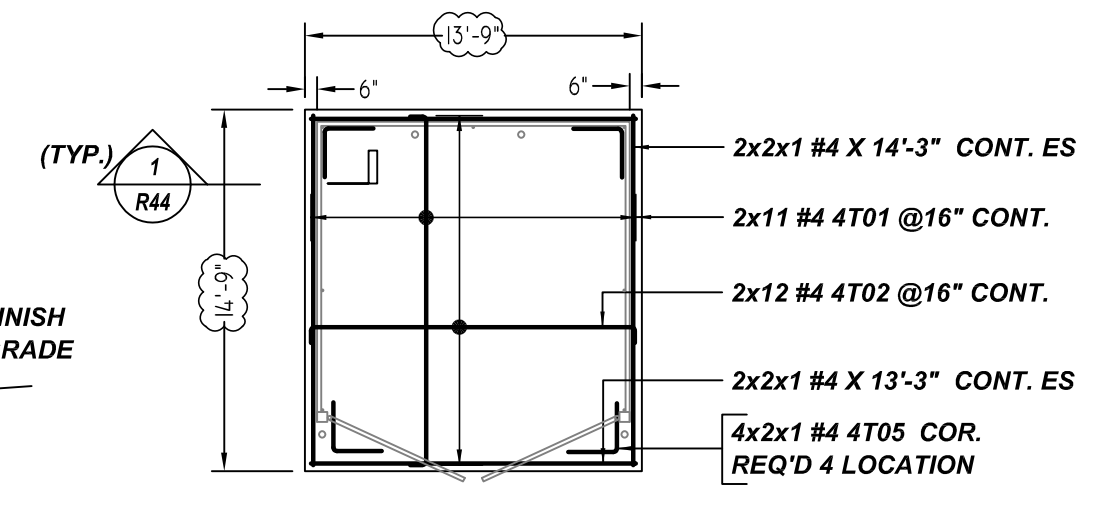
A/E PLEASE VERIFY THE ALL CLOUDED DIMENSIONS  
 A/E PLEASE VERIFY THE LAP VALUE WE FOLLOWED



**1 SECTION**  
 SCALE - 1/2"=1'-0"  
 REF: C-3 & C-7



**TYPICAL CONCRETE SIDE WALK**  
 SCALE - 1/2"=1'-0"  
 REF: C-3 & C-7



**DUMPSTER PAD ENCLOSURE DETAILS  
 DETAIL - B**  
 SCALE 1/8"=1'-0"  
 REF: C-3 & C-7  
 @ 2 LOCATIONS

**REBAR GRADE 60 ASTM A-615  
 SPLICES USED**

CLASS B 5,000 psi UNO		OTHER BARS	
TOP BARS			
#3 1'-4"	#3 1'-0"	#3 1'-0"	#3 1'-0"
#4 1'-8"	#4 1'-1"	#4 1'-1"	#4 1'-1"
#5 2'-0"	#5 1'-7"	#5 1'-7"	#5 1'-7"
#6 2'-9"	#6 2'-1"	#6 2'-1"	#6 2'-1"
#7 4'-5"	#7 3'-5"	#7 3'-5"	#7 3'-5"
#8 5'-6"	#8 4'-3"	#8 4'-3"	#8 4'-3"
#9 6'-8"	#9 5'-1"	#9 5'-1"	#9 5'-1"
#10 7'-10"	#10 6'-0"	#10 6'-0"	#10 6'-0"
#11 -	#11 -	#11 -	#11 -
#14 -	#14 -	#14 -	#14 -

ABBREVIATIONS	BAR MARK SIZE EQUIVALENT	
	Imperial	Soft Metric
ADD. = Additional	#3	#10
B.O.W. = Bottom of wall	#4	#13
C.B. = Corner Bars	#5	#16
DIAG. = Diagonal	#6	#19
D.O. = Door Opening	#7	#22
DWLS. = Dowels	#8	#25
E.F. = Each Face	#9	#29
E.S. = Each Side	#10	#32
E.W. = Each Way	#11	#36
FTG. = Footing		
F.F. = Far Face		
HORIZ. = Horizontal		
I.F. = Inside Face		
INTERS. = Intersection		
L.W. = long Way		
N.F. = Near Face		
O.F. = Outside Face		
S.W. = Short Way		
T&B = Top & Bottom		
T.O.W. = Top of Wall		
TRANS. = Transverse		
VERT. = Vertical		

REV NO	DATE	SENT FOR	REV NO	DATE	SENT FOR
0	08.04.21	APPROVAL			

**SLATE AT MERRIMACK**  
 SITE WORK REINFORCEMENT DETAILS  
**MERRIMACK, NEW HAMPSHIRE 03054**  
 CUSTOMER: DEX BY TERRA

DESIGNER: SUMMIT ENGINEERING	DRAWN BY: DATE	JOB NO: M921P812	SHEET NO: R44
	RAJ/MET 08.04.21		