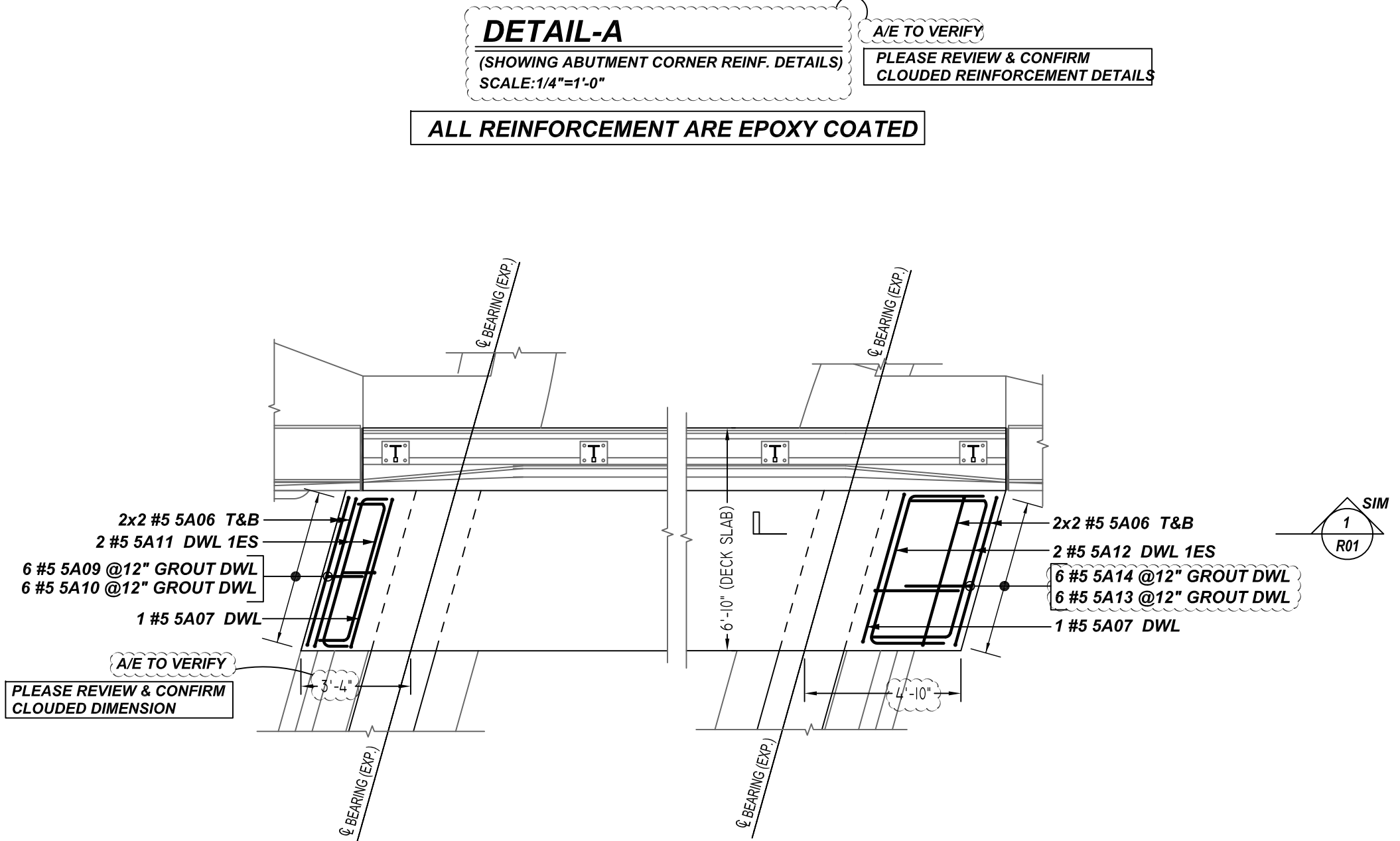
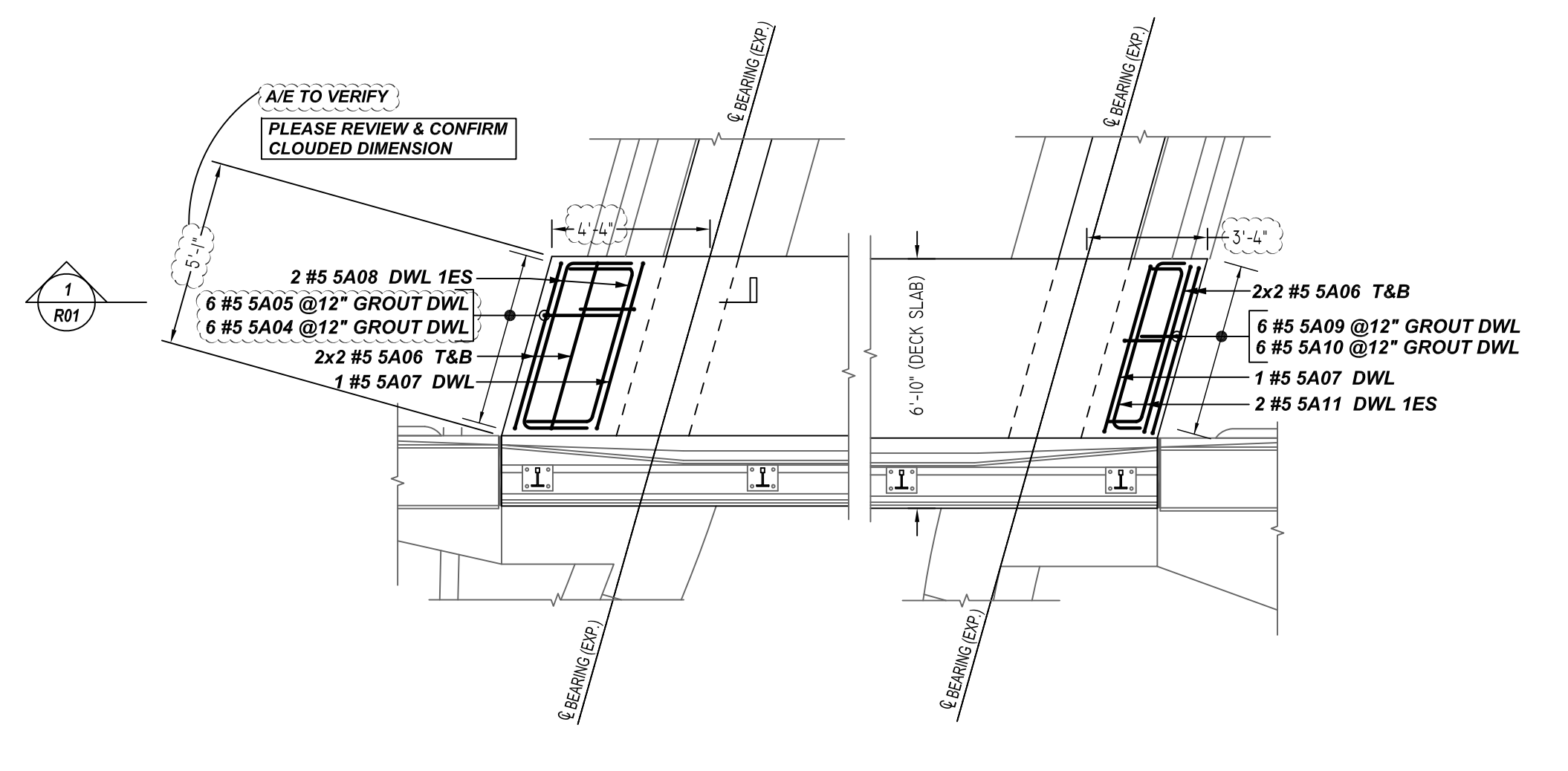
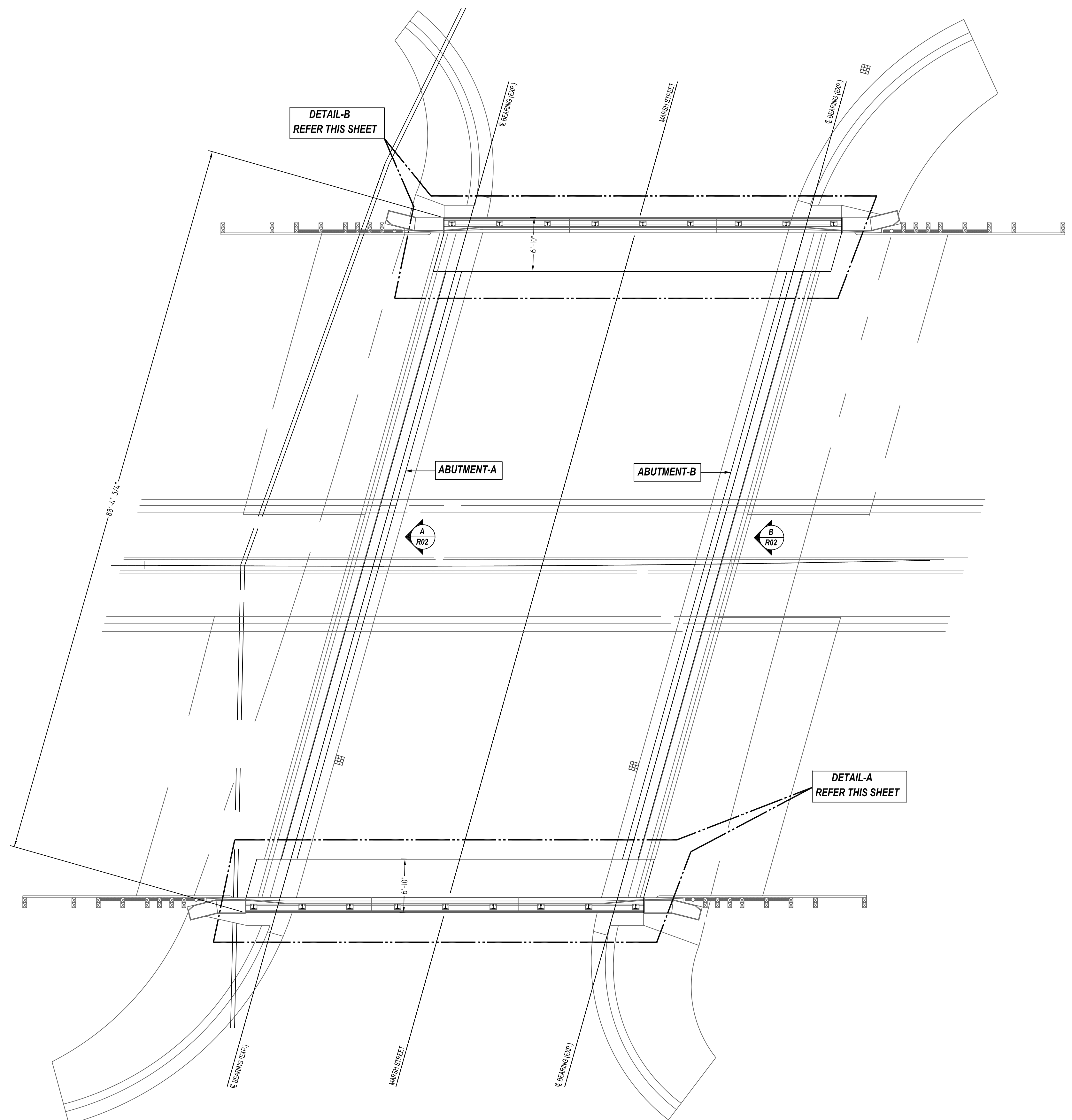


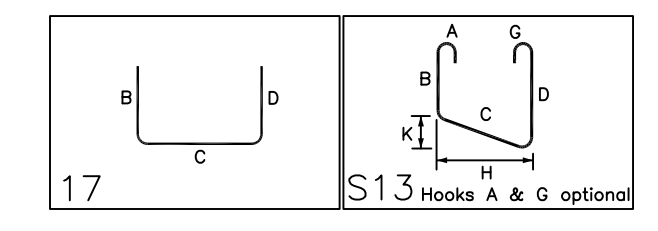
NOTICE
 SHORTAGES, IMPROPER FABRICATION OR CLAIMS FOR ANY OTHER REASON MUST BE REPORTED TO THIS COMPANY WITHIN 10 DAYS FROM ORIGINAL DELIVERY. THIS COMPANY ALSO RESERVES THE RIGHT TO FIELD INSPECT MATERIALS PRIOR TO REPLACEMENT OR RECONDITIONING OF MATERIALS AND WILL NOT BE LIABLE FOR CHARGES FROM WORK DONE IN THE FIELD WITHOUT PRIOR AUTHORIZATION FROM THIS COMPANY.

REINFORCING STEEL PLACING DRAWING ONLY. USE IN CONJUNCTION WITH CONTRACT DRAWINGS & SPECIFICATIONS. ELEVATIONS & DIMENSIONS SHOWN ON DRAWING ARE FOR DETAILING PURPOSES ONLY AND SHOULD NOT BE USED FOR CONSTRUCTION UNLESS VERIFIED BY ENGINEER OR CONTRACTOR.



Release Number: R01

Bar Mark	Qty	Size	Total Length	Type	X	Y	Z	BENDING DETAILS															
SA04	6	#5	6'-3"	17	1'-0"	2'-8"	2'-1"																
SA05	6	#5	3'-9"	17	1'-0"	2'-3"	2'-1"																
SA06	16	#5	8'-9"	17	2'-0"	4'-9"	2'-0"																
SA07	4	#5	6'-1"	17	0'-8"	4'-9"	0'-8"																
SA08	2	#5	8'-2"	S13	1'-9"	4'-8"	1'-9"					4'-6"		1'-2"									
SA09	12	#5	4'-3"	17	0'-8"	2'-8"	1'-1"																
SA10	12	#5	3'-3"	17	1'-0"	2'-3"																	
SA11	4	#5	6'-2"	S13	0'-9"	4'-8"	0'-9"					4'-6"		1'-2"									
SA12	2	#5	9'-2"	S13	2'-3"	4'-8"	2'-3"					4'-6"		1'-2"									
SA13	6	#5	7'-3"	17	2'-0"	2'-8"	2'-7"																
SA14	6	#5	4'-3"	17	2'-0"	2'-3"	2'-7"																



REBAR GRADE 60 ASTM A-615

SPLICES USED
 CLASS B 4,000 psi UNO

TOP BARS	OTHER BARS
#3 -	#3 -
#4 -	#4 -
#5 -	#5 -
#6 -	#6 -
#7 -	#7 -
#8 -	#8 -
#9 -	#9 -
#10 -	#10 -
#11 -	#11 -
#14 -	#14 -

ABBREVIATIONS
 ADD. = Additional
 B.O.W. = Bottom of wall
 C.B. = Corner Bars
 DIAG. = Diagonal
 D.O. = Door Opening
 DWLS. = Dowels
 E.F. = Each Face
 E.S. = Each Side
 E.W. = Each Way
 FTG. = Footing
 F.F. = Far Face
 HORIZ. = Horizontal
 I.F. = Inside Face
 INTERS. = Intersection
 L.W. = long Way
 N.F. = Near Face
 O.F. = Outside Face
 S.W. = Short Way
 T&B = Top & Bottom
 T.O.W. = Top of Wall
 Trans. = Transverse
 VERT. = Vertical

BAR MARK SIZE EQUIVALENT	
Imperial	Soft Metric
#3	#10
#4	#13
#5	#16
#6	#19
#7	#22
#8	#25
#9	#29
#10	#32
#11	#36

MADOT - CONCORD STREET BRIDGE
 BRIDGE REINFORCEMENT DETAILS
GLOUCESTER, MA

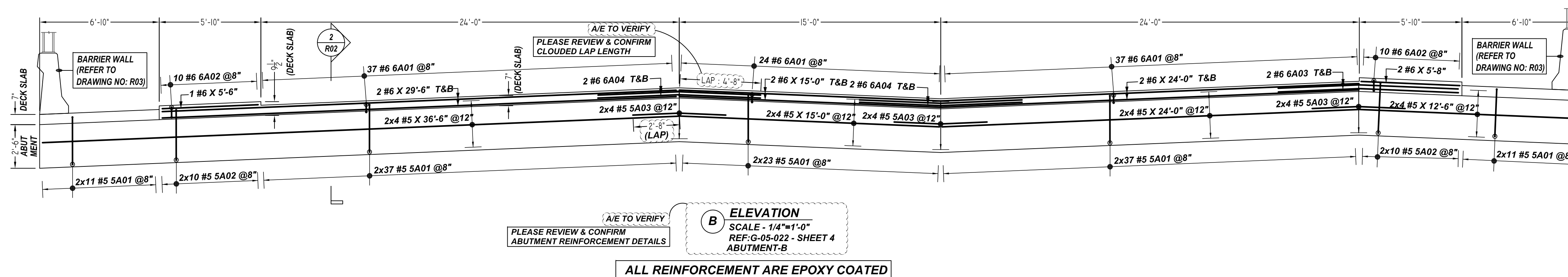
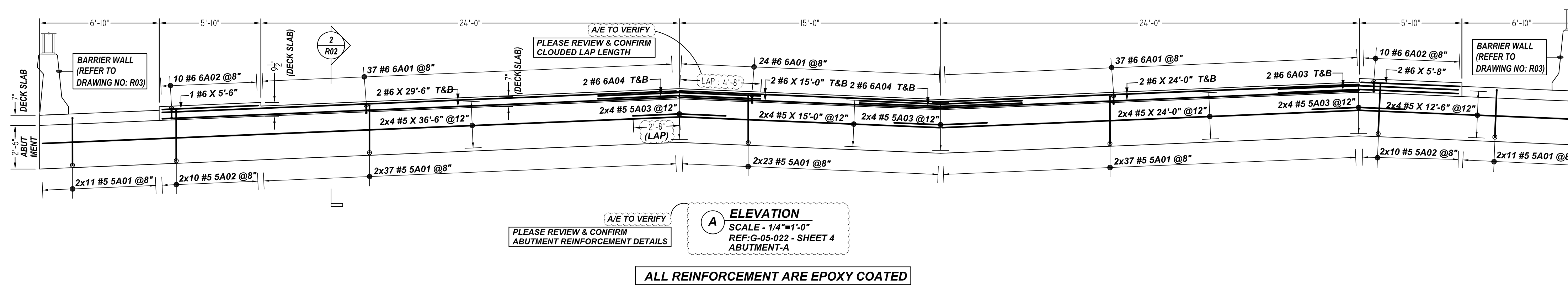
CUSTOMER: NEW ENGLAND INFRASTRUCTURE
 DESIGNER: -

0	08.17.21	APPROVAL				SS	08.17.21	M921P895		R01
REV NO	DATE	SENT FOR	REV NO	DATE	SENT FOR	SS	DATE	JOB NO		SHEET NO.

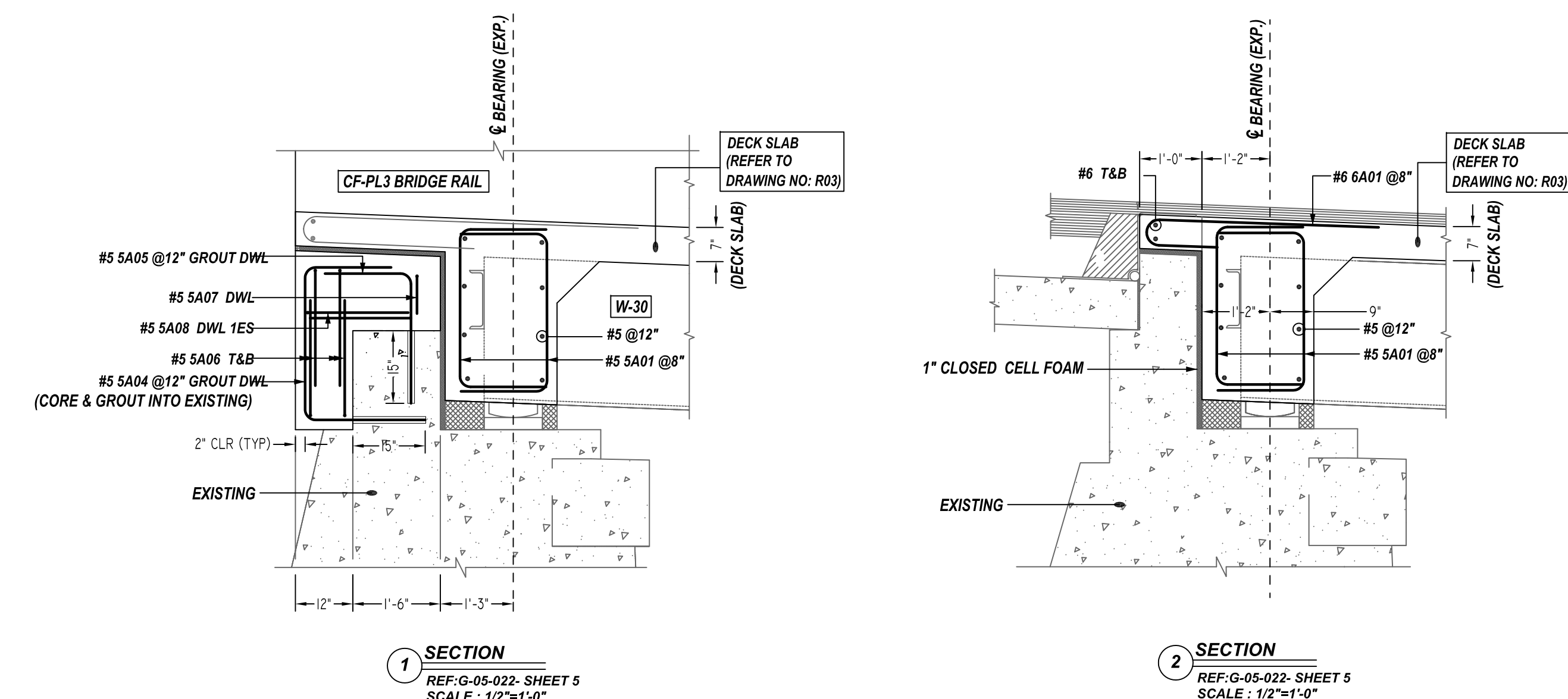
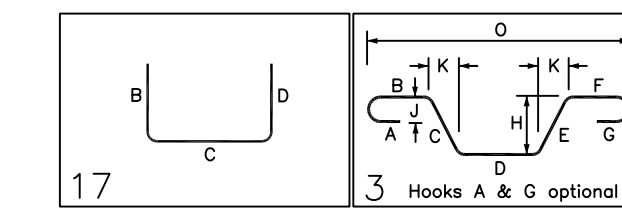
NOTICE

SHORTAGES, IMPROPER FABRICATION OR CLAIMS FOR ANY OTHER REASON MUST BE REPORTED TO THIS COMPANY WITHIN 10 DAYS FROM ORIGINAL DELIVERY. THIS COMPANY ALSO RESERVES THE RIGHT TO FIELD INSPECT MATERIALS PRIOR TO REPLACEMENT OR RECONDITIONING OF MATERIALS AND WILL NOT BE LIABLE FOR CHARGES FROM WORK DONE IN THE FIELD WITHOUT PRIOR AUTHORIZATION FROM THIS COMPANY.

REINFORCING STEEL PLACING DRAWING ONLY. USE IN CONJUNCTION WITH CONTRACT DRAWINGS & SPECIFICATIONS. ELEVATIONS & DIMENSIONS SHOWN ON DRAWING ARE FOR DETAILING PURPOSES ONLY AND SHOULD NOT BE USED FOR CONSTRUCTION UNLESS VERIFIED BY ENGINEER OR CONTRACTOR.



Bar Mark	Qty	Size	Total Length	Type	X'	Y'	Z'	BENDING DETAILS													
5A01	476	#5	5'-9"	17				1'-6"	2'-9"	1'-6"											
5A02	80	#5	5'-11"	17				1'-6"	2'-11"	1'-6"											
5A03	48	#5	5'-3 3/4"	3				2'-8"	2'-7 1/4"	1'-6"											
6A01	196	#6	5'-9"	17				1'-3"	0'-8"	4'-0"									0'-3 1/2"	2'-7 1/4"	5'-3 1/4"
6A02	40	#6	5'-10 1/4"	17				1'-3"	0'-7 1/4"	4'-0"											
6A03	4	#6	10'-3 3/4"	3				4'-8"	5'-7 1/4"										0'-6 1/2"	5'-7 1/4"	10'-3 1/4"
6A04	8	#6	9'-4"	3				4'-8"	4'-8"										0'-5 1/2"	4'-7 1/4"	9'-3 1/4"



REBAR GRADE 60 ASTM A-615

SPLICES USED		ABBREVIATIONS		BAR MARK SIZE EQUIVALENT	
CLASS B 4,000 psi UNO					
TOP BARS	OTHER BARS			Imperial	Soft Metric
#3 -	#3 -			#3	#10
#4 -	#4 -			#4	#13
#5 -	#5 -			#5	#16
#6 -	#6 -			#6	#19
#7 -	#7 -			#7	#22
#8 -	#8 -			#8	#25
#9 -	#9 -			#9	#29
#10 -	#10 -			#10	#32
#11 -	#11 -			#11	#36
#14 -	#14 -				

MADOT - CONCORD STREET BRIDGE
BRIDGE REINFORCEMENT DETAILS
GLOUCESTER, MA

CUSTOMER: NEW ENGLAND INFRASTRUCTURE
DESIGNER: -

0	08.17.21	APPROVAL				DRAWN BY	DATE	JOB NO	SHEET NO.
REV NO	DATE	SENT FOR	REV NO	DATE	SENT FOR	SS	08.17.21	M921P895	R02