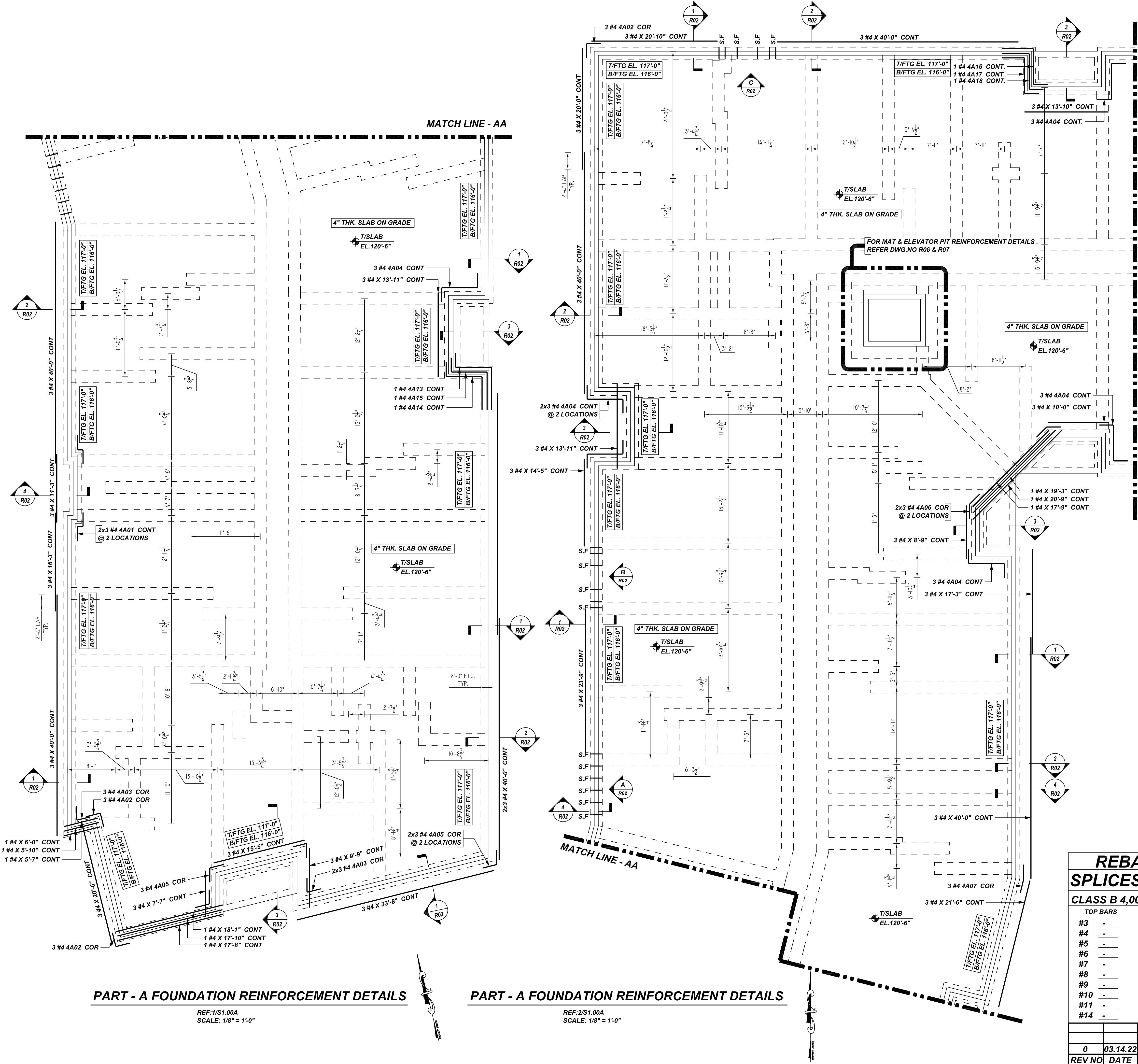


### NOTICE

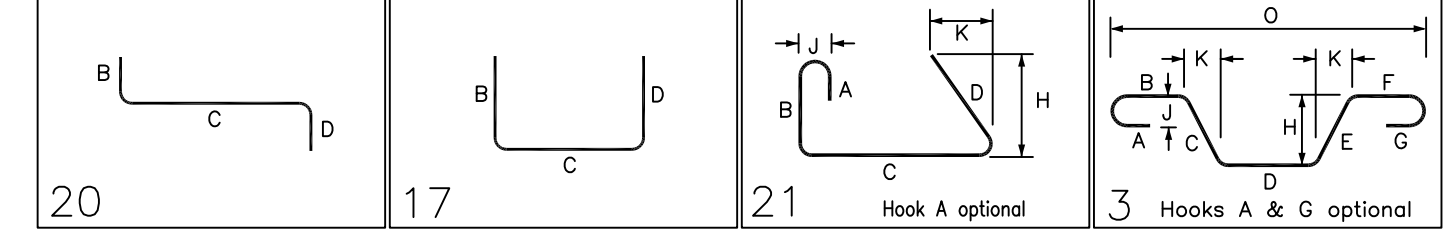
SHORTAGES, IMPROPER FABRICATION OR CLAIMS FOR ANY OTHER REASON MUST BE REPORTED TO THIS COMPANY WITHIN 10 DAYS FROM ORIGINAL DELIVERY. THIS COMPANY ALSO RESERVES THE RIGHT TO FIELD INSPECT MATERIALS PRIOR TO REPLACEMENT OR RECONDITIONING OF MATERIALS AND WILL NOT BE LIABLE FOR CHARGES FROM WORK DONE IN THE FIELD WITHOUT PRIOR AUTHORIZATION FROM THIS COMPANY.

REINFORCING STEEL PLACING DRAWING ONLY. USE IN CONJUNCTION WITH CONTRACT DRAWINGS & SPECIFICATIONS. ELEVATIONS & DIMENSIONS SHOWN ON DRAWING ARE FOR DETAILING PURPOSES ONLY AND SHOULD NOT BE USED FOR CONSTRUCTION UNLESS VERIFIED BY ENGINEER OR CONTRACTOR.



FOR REINFORCEMENT CONTINUATION REFER PART - B SHOP DRAWING.

Bar Mark	Qty	Size	Total Length	Type	W'	W''	W'''	W''''	W'''''	W''''''	W'''''''	W''''''''	W'''''''''	W''''''''''
4A01	6	#4	5'-8 3/4"	20										
4A02	9	#4	4'-8 1/2"	17										
4A03	9	#4	4'-6 3/4"	21										
4A04	18	#4	10'-8 1/2"	20										
4A05	9	#4	4'-7 3/4"	3										
4A06	6	#4	4'-7 3/4"	3										
4A07	3	#4	4'-7 3/4"	3										
4A13	1	#4	15'-4"	20										
4A14	1	#4	13'-10"	20										
4A15	1	#4	14'-7"	20										
4A16	1	#4	13'-7"	20										
4A17	1	#4	12'-1"	20										
4A18	1	#4	12'-10"	20										



### NOTES

- TYPICAL CLEARANCES ARE AS FOLLOWS:  
FOLLOW MINIMUM COVER IN ACCORDANCE WITH  
FOUNDATION BOT = 3" SIDE = 3" TOP = 2"  
CONC. WALL TOP = 2" SIDE = 2"
- ALL DIMENSIONS ARE FEET AND INCHES U.N.O
- GC PLEASE VERIFY THE CLOUDED ITEMS

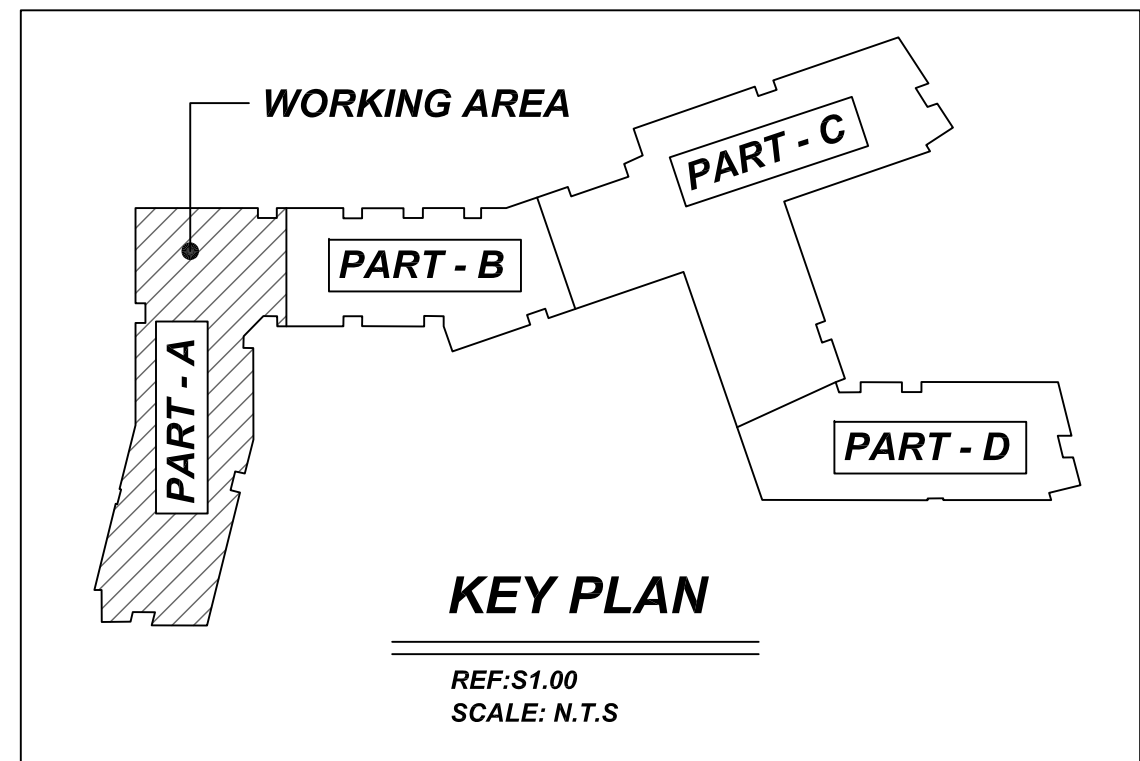
A/E PLEASE VERIFY COVER DETAILS

ALL BARS IN THIS DRAWING  
ASTM A615 GRADE 60  
BLACK UNCOATED

### LAP SCHEDULE @ FOUNDATION

3500 PSI (CLASS-B) CASE - 1  
Per ACI 318 (12.2.2)

BAR#	LENGTHS	
	TOP	OTHERS
#3	26"	21"
#4	36"	28"
#5	43"	34"
#6	52"	41"
#7	76"	59"
#8	86"	67"
#9	98"	76"
#10	110"	85"
#11	121"	94"



### REBAR GRADE 60 ASTM A-615

SPLICES USED		ABBREVIATIONS		BAR MARK SIZE EQUIVALENT	
CLASS B 4,000 psi UNO				Imperial	Soft Metric
TOP BARS	OTHER BARS	ADD.	= Additional	#3	#10
#3	#3	B.O.W.	= Bottom of wall	#4	#13
#4	#4	C.B.	= Corner Bars	#5	#16
#5	#5	DIAG.	= Diagonal	#6	#19
#6	#6	D.O.	= Door Opening	#7	#22
#7	#7	DWLS.	= Dowels	#8	#25
#8	#8	E.F.	= Each Face	#9	#29
#9	#9	E.S.	= Each Side	#10	#32
#10	#10	E.W.	= Each Way	#11	#36
#11	#11	FTG.	= Footing		
#14	#14	F.F.	= Far Face		
		HORIZ.	= Horizontal		
		I.F.	= Inside Face		
		INTERS.	= Intersection		
		L.W.	= Long Way		
		N.F.	= Near Face		
		O.F.	= Outside Face		
		S.W.	= Short Way		
		T.O.W.	= Top & Bottom		
		Trans.	= Transverse		
		VERT.	= Vertical		

**PART - A FOUNDATION REINFORCEMENT DETAILS**  
REF: 1/S1.00A  
SCALE: 1/8" = 1'-0"

**PART - A FOUNDATION REINFORCEMENT DETAILS**  
REF: 2/S1.00A  
SCALE: 1/8" = 1'-0"

## SAUGUS RIDGE

PART - A FOUNDATION REINFORCEMENT DETAILS  
**MASSACHUSETTS 02184**

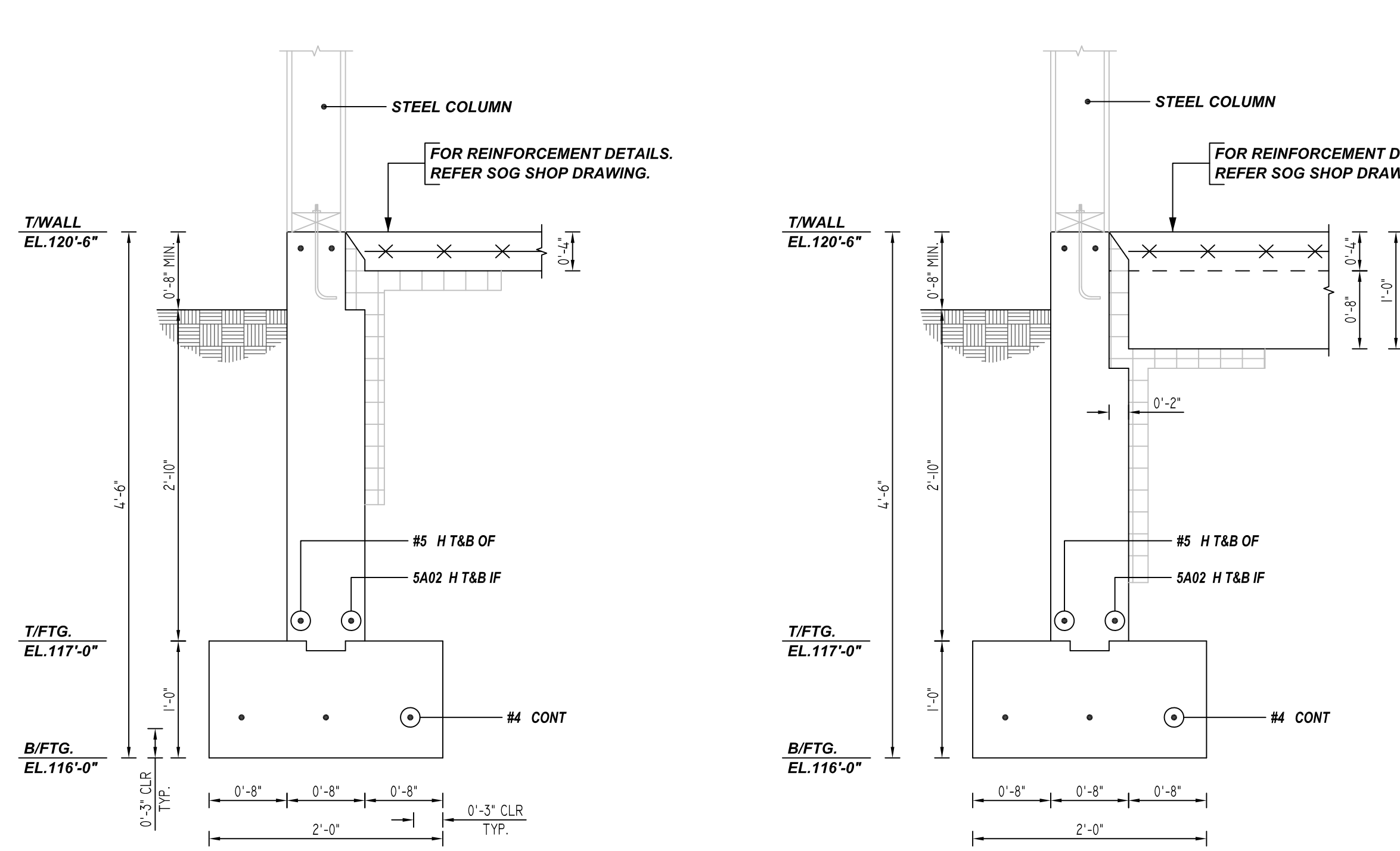
CUSTOMER: CALLAHAN  
DESIGNER: -

REV NO	DATE	APPROVAL	SENT FOR	REV NO	DATE	SENT FOR	DRAWN BY	DATE	JOB NO	SHEET NO.
0	03.14.22						JP/MET	03.14.22	M92270187P	R01

**NOTICE**

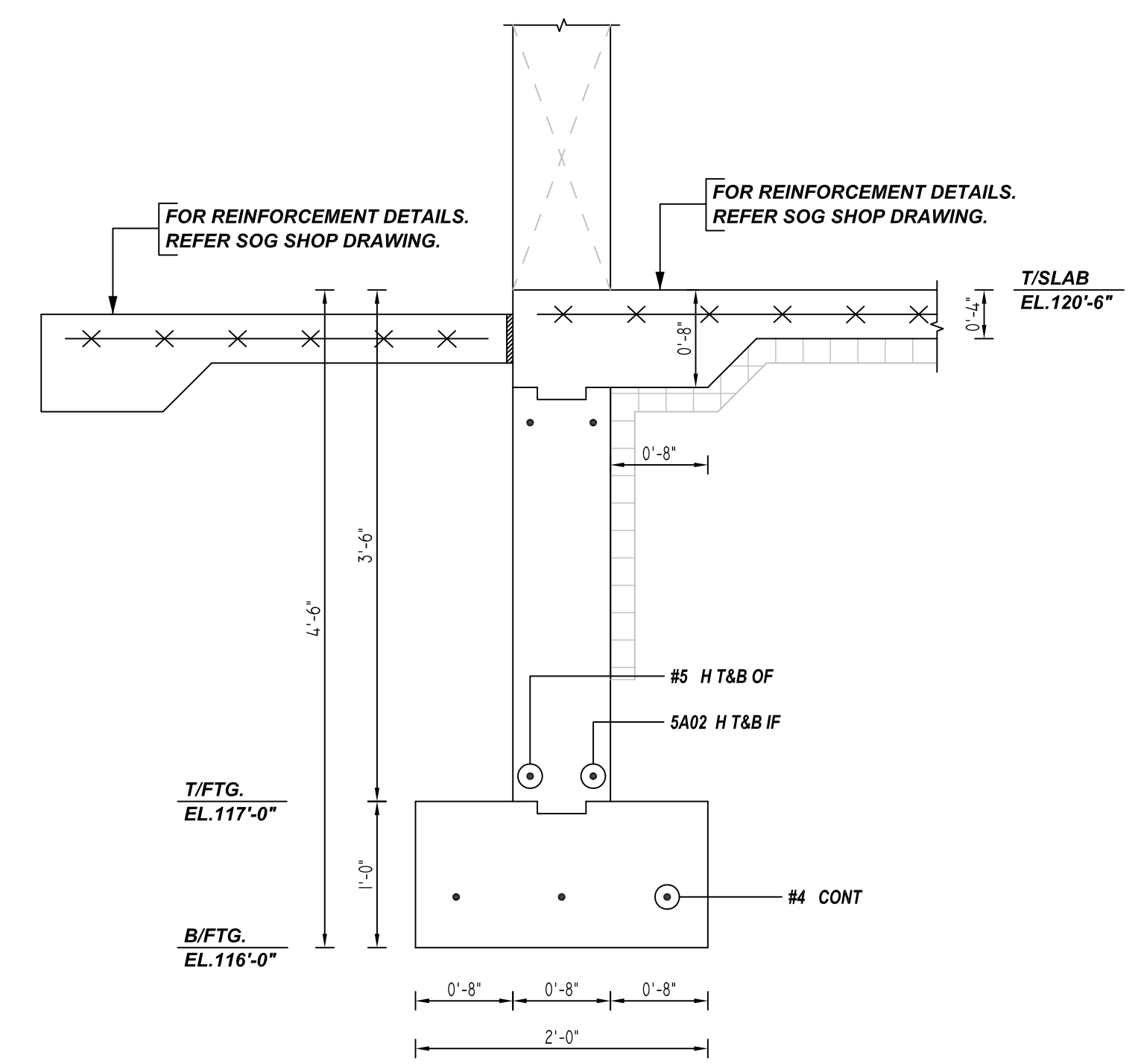
SHORTAGES, IMPROPER FABRICATION OR CLAIMS FOR ANY OTHER REASON MUST BE REPORTED TO THIS COMPANY WITHIN 10 DAYS FROM ORIGINAL DELIVERY. THIS COMPANY ALSO RESERVES THE RIGHT TO FIELD INSPECT MATERIALS PRIOR TO REPLACEMENT OR RECONDITIONING OF MATERIALS AND WILL NOT BE LIABLE FOR CHARGES FROM WORK DONE IN THE FIELD WITHOUT PRIOR AUTHORIZATION FROM THIS COMPANY.

REINFORCING STEEL PLACING DRAWING ONLY. USE IN CONJUNCTION WITH CONTRACT DRAWINGS & SPECIFICATIONS. ELEVATIONS & DIMENSIONS SHOWN ON DRAWING ARE FOR DETAILING PURPOSES ONLY AND SHOULD NOT BE USED FOR CONSTRUCTION UNLESS VERIFIED BY ENGINEER OR CONTRACTOR.

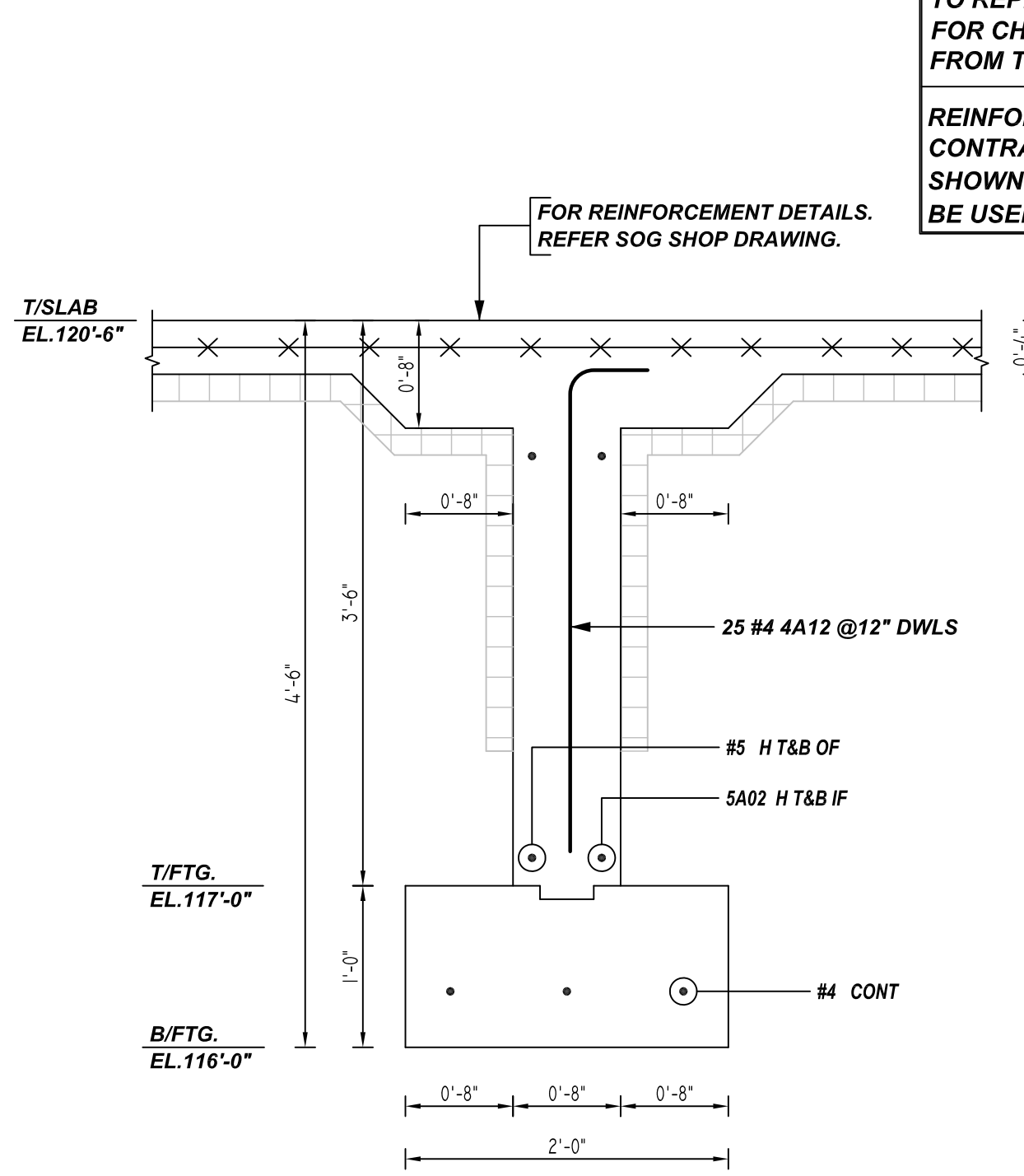


**1 SECTION**  
REF: 7/S3.50  
SCALE: 1/1" = 1'-0"

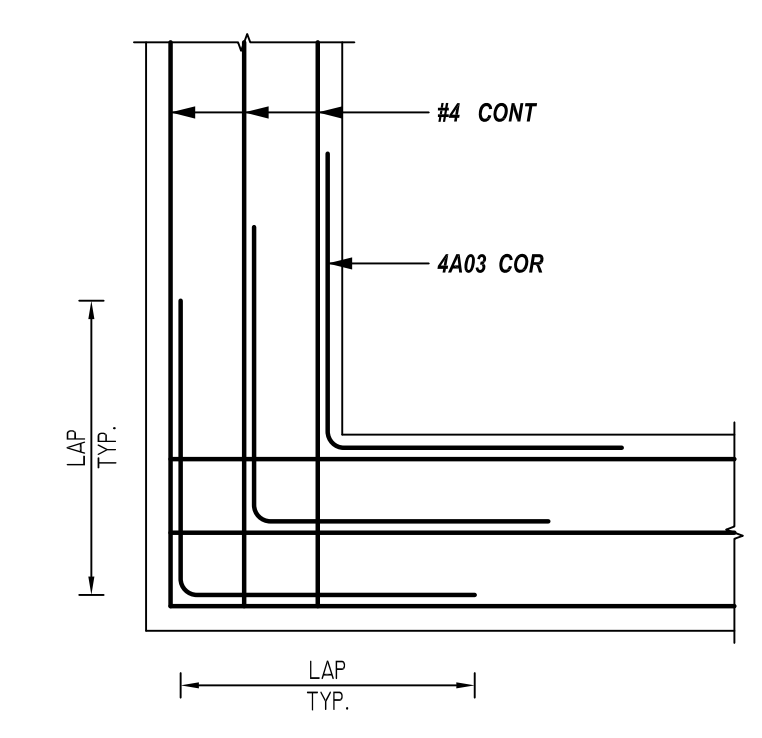
**2 SECTION**  
REF: 8/S3.50  
SCALE: 1/1" = 1'-0"



**3 SECTION**  
REF: 4/S3.50  
SCALE: 1/1" = 1'-0"

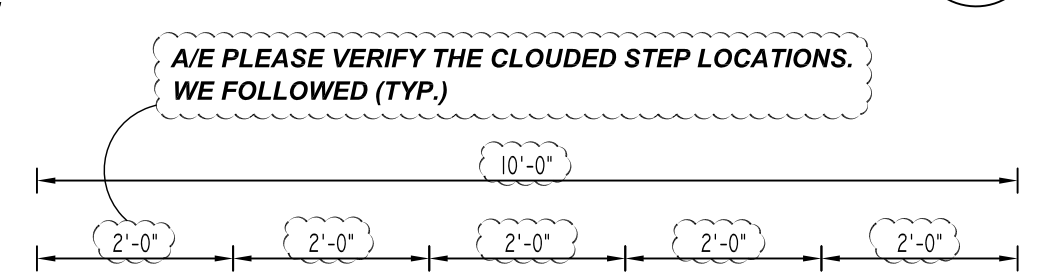


**4 SECTION**  
REF: 6/S3.31  
SCALE: 1/1" = 1'-0"



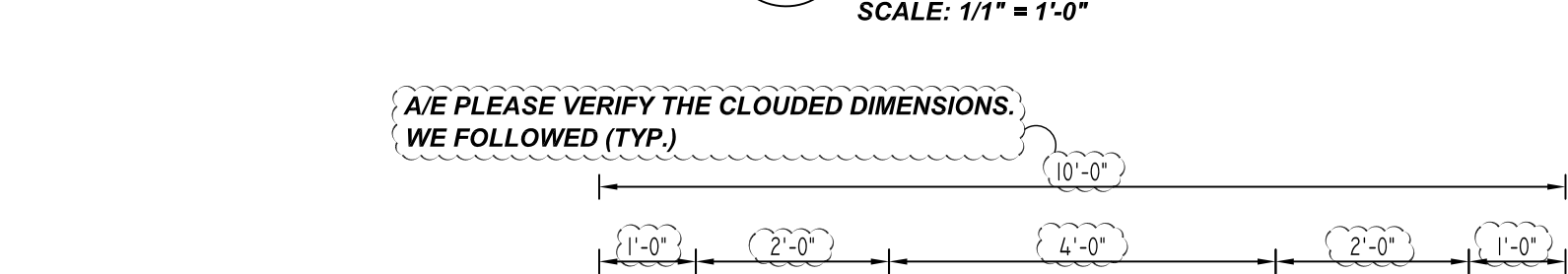
**TYPICAL CORNER BAR DETAILS**  
REF: SCALE: 1/2" = 1'-0"

A/E PLEASE VERIFY THE FOOTING CORNER AND INTER SECTION DETAILS. SINCE, IT IS NOT GIVEN IN THE STRUCTURAL DRAWINGS, WE FOLLOWED (TYP.)

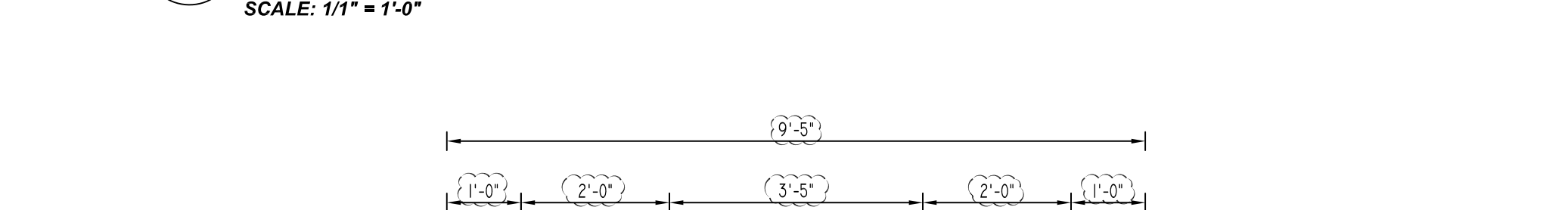


**A ELEVATION**  
REF: 7/S3.50  
SCALE: 1/2" = 1'-0"

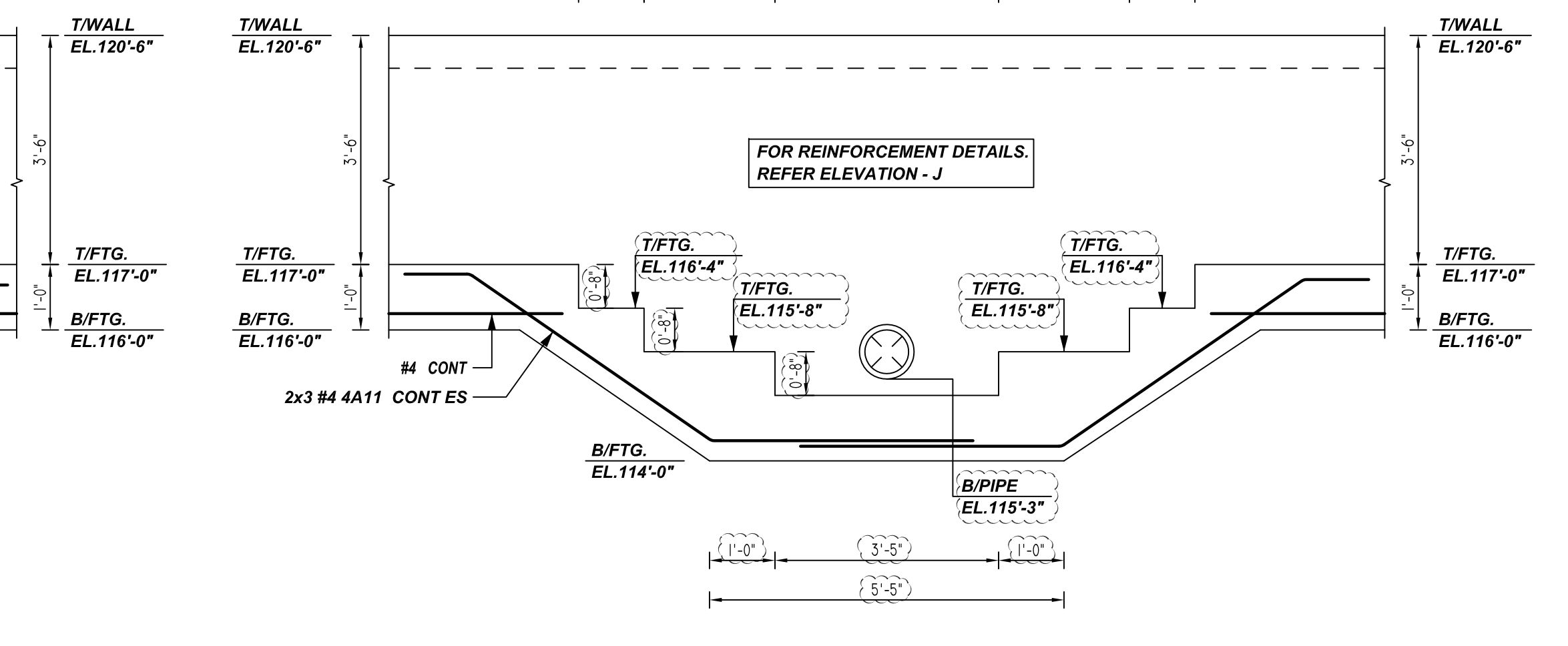
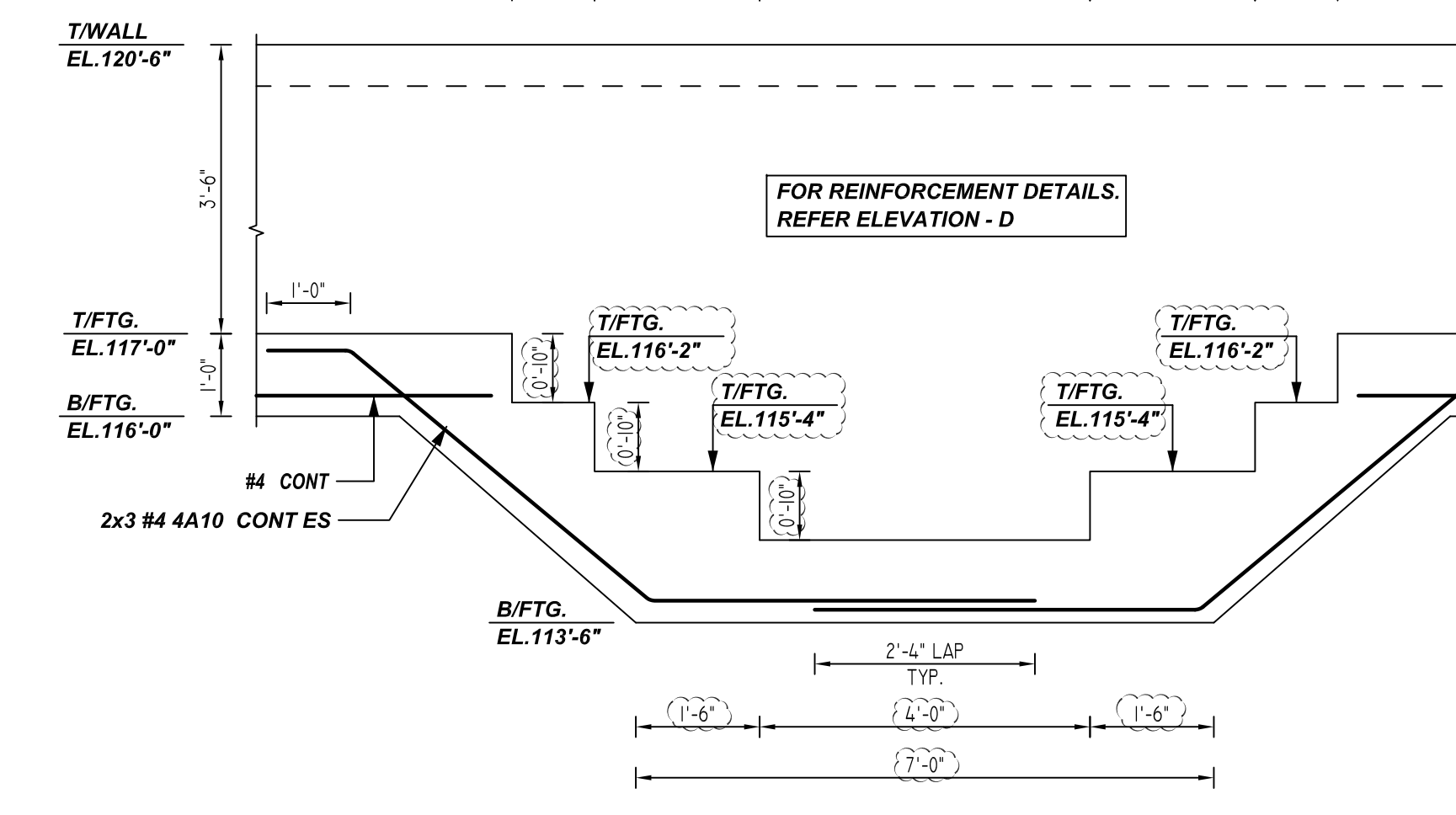
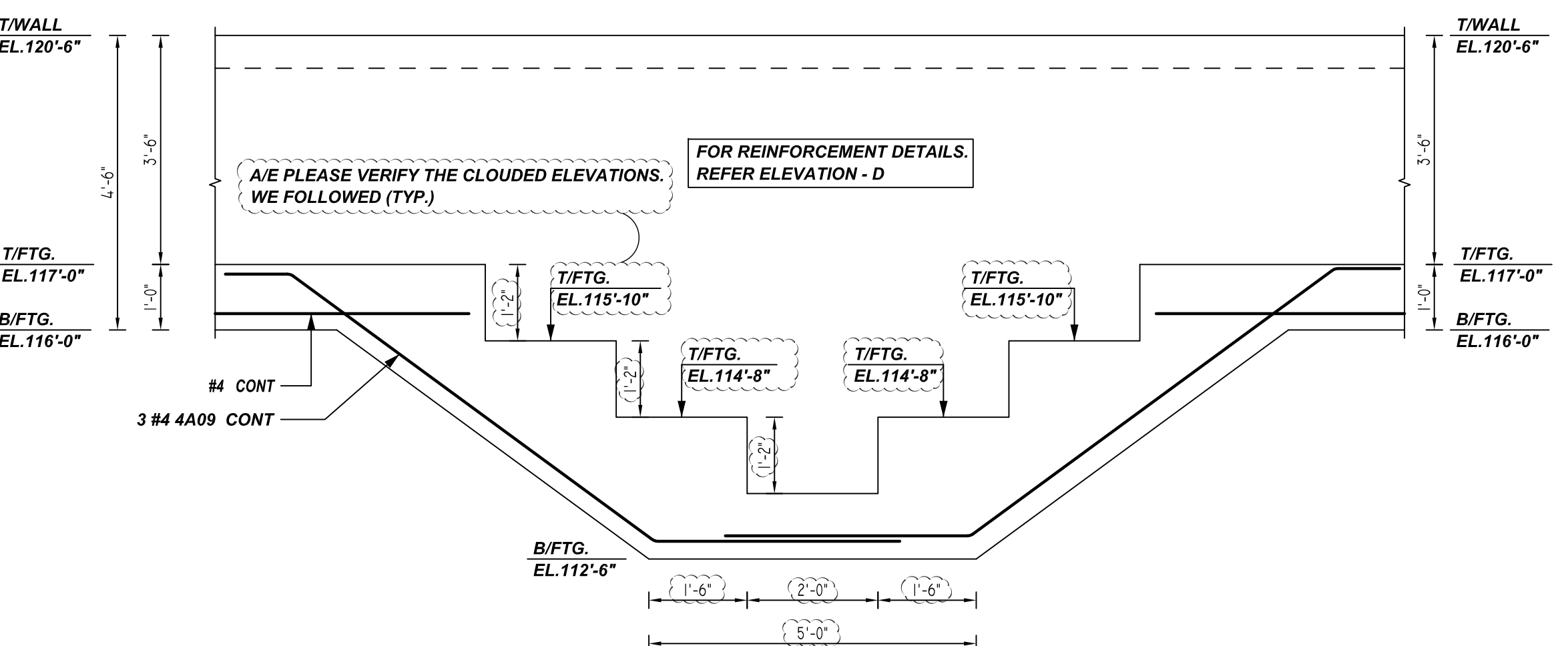
A/E PLEASE VERIFY THE CLOUDED BAR ARRANGEMENTS. WE DETAILED (TYP.)



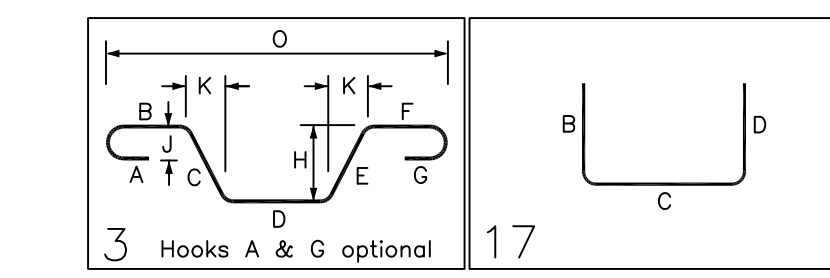
**B ELEVATION**  
REF: 7/S3.50  
SCALE: 1/2" = 1'-0"



**C ELEVATION**  
REF: 7/S3.50  
SCALE: 1/2" = 1'-0"



Bar Mark	Qty	Size	Total Length	Type	'A'	'B'	'C'	'D'	'E'	'F'	'G'	'H'	'I'	'J'	'K'	'L'
4409	3	#4	11'-7 3/4"	3	1'-0"	6'-10 3/4"	3'-9"					4'-1 1/4"	5'-6 3/4"	10'-3 3/4"		
4410	6	#4	10'-4 3/4"	3	1'-0"	4'-8 3/4"	4'-8"					3'-0 3/4"	3'-7 3/4"	9'-3 3/4"		
4411	6	#4	9'-5 3/4"	3	1'-0"	4'-5 3/4"	4'-0"					2'-7"	3'-8"	8'-8"		
4412	25	#4	3'-6"	17	0'-6"	3'-0"										



**ALL BARS IN THIS DRAWING  
ASTM A615 GRADE 60  
BLACK UNCOATED**

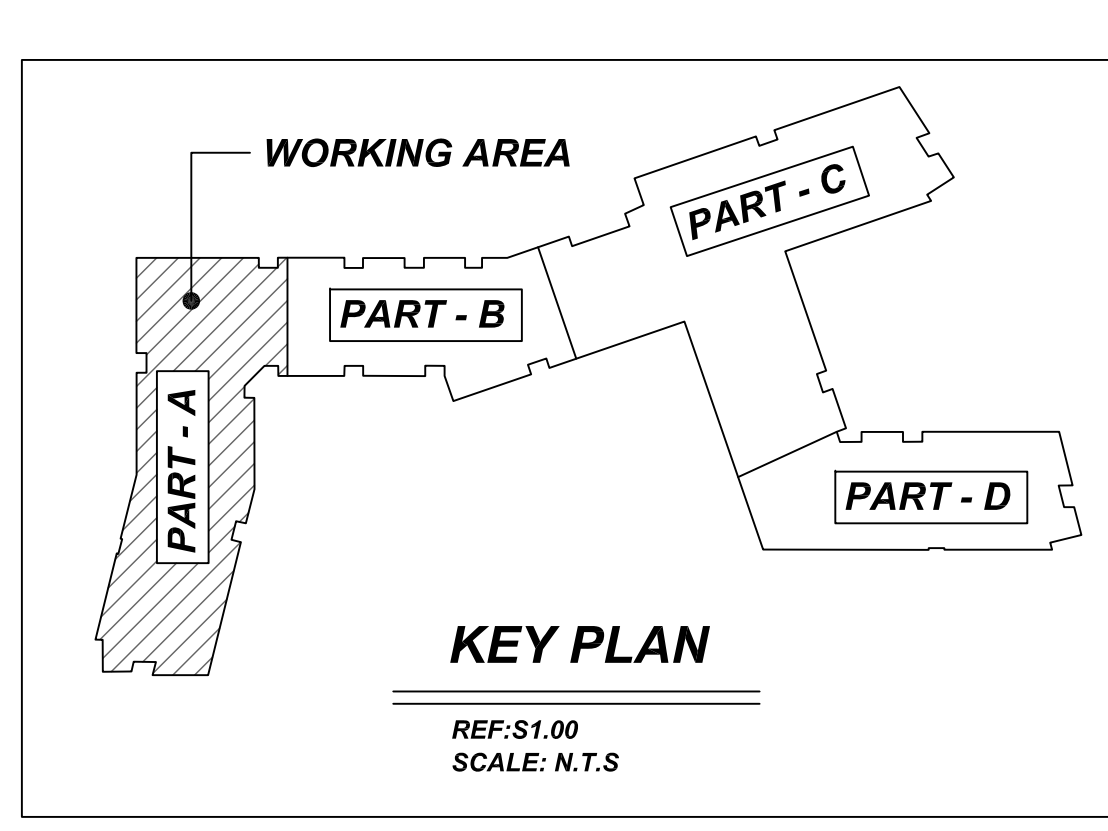
- NOTES**
- TYPICAL CLEARANCES ARE AS FOLLOWS:  
FOLLOW MINIMUM COVER IN ACCORDANCE WITH FOUNDATION CONC. WALL  
BOT = 3" TOP = 2" SIDE = 3" TOP = 2"
  - ALL DIMENSIONS ARE FEET AND INCHES U.N.O
  - GC PLEASE VERIFY THE CLOUDED ITEMS

A/E PLEASE VERIFY COVER DETAILS

**LAP SCHEDULE @ FOUNDATION**

3500 PSI (CLASS-B) CASE - 1  
Per ACI 318 (12.2.2)

BAR#	LENGTHS	
	TOP	OTHERS
#3	26"	21"
#4	36"	28"
#5	43"	34"
#6	52"	41"
#7	76"	59"
#8	86"	67"
#9	98"	76"
#10	110"	85"
#11	121"	94"



**REBAR GRADE 60 ASTM A-615**

SPLICES USED		ABBREVIATIONS		BAR MARK SIZE EQUIVALENT	
CLASS B 4,000 psi UNO	TOP BARS	OTHER BARS	ADD.	Imperial	Soft Metric
#3	-	#3	-	#3	#10
#4	-	#4	-	#4	#13
#5	-	#5	-	#5	#16
#6	-	#6	-	#6	#19
#7	-	#7	-	#7	#22
#8	-	#8	-	#8	#25
#9	-	#9	-	#9	#29
#10	-	#10	-	#10	#32
#11	-	#11	-	#11	#36
#14	-	#14	-		

**SAUGUS RIDGE  
PART - A FOUNDATION REINFORCEMENT DETAILS  
MASSACHUSETTS 02184**

CUSTOMER: CALLAHAN  
DESIGNER: -

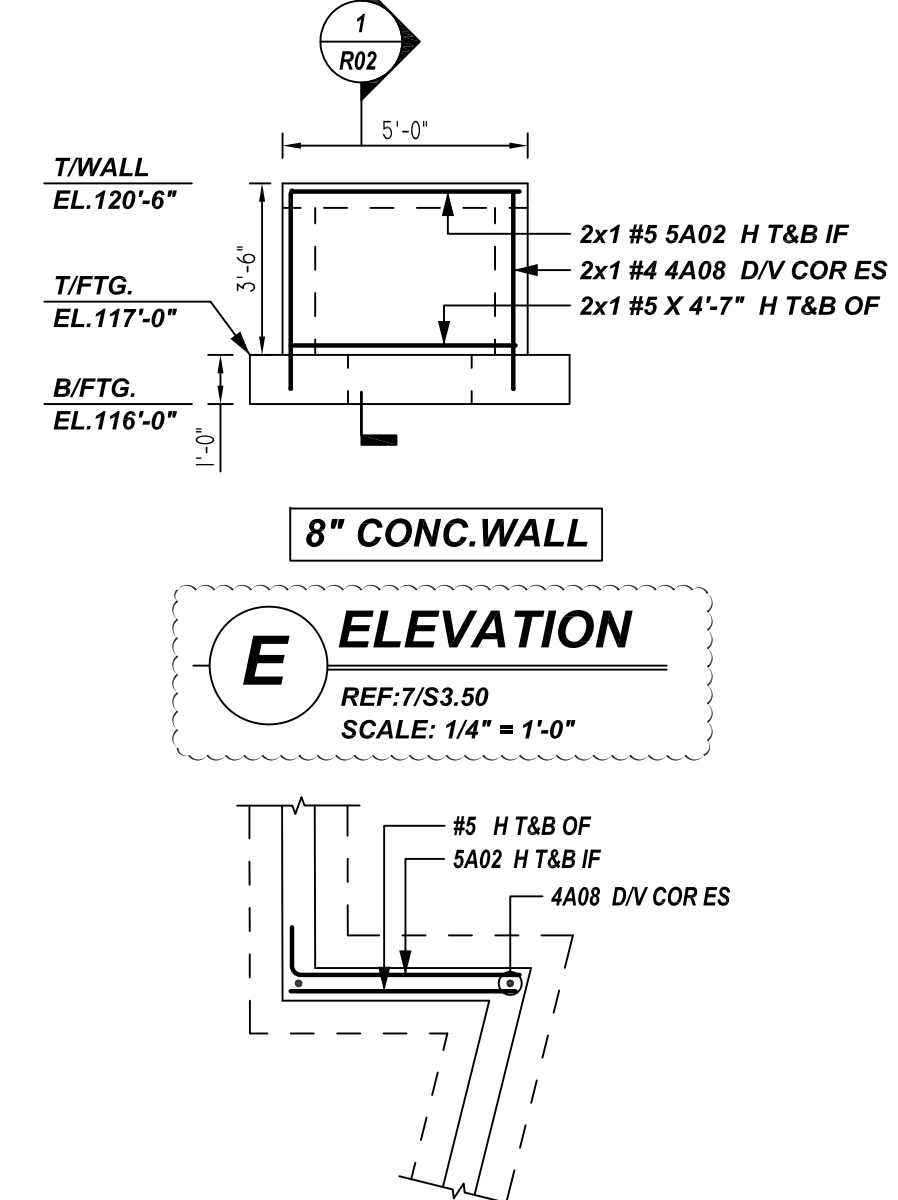
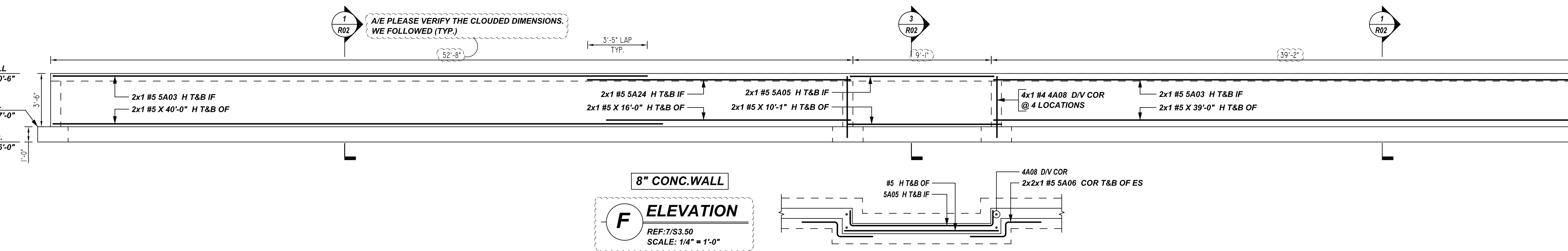
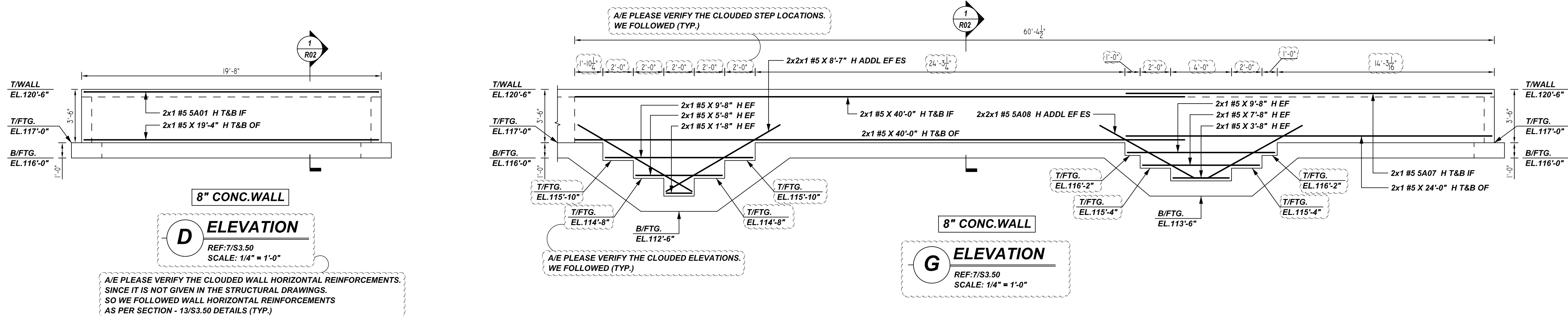
REV NO	DATE	APPROVAL	REV NO	DATE	SENT FOR	JP/MET	DATE	JOB NO	SHEET NO.
0	03.14.22						03.14.22	M92270187P	R02

**NOTICE**

SHORTAGES, IMPROPER FABRICATION OR CLAIMS FOR ANY OTHER REASON MUST BE REPORTED TO THIS COMPANY WITHIN 10 DAYS FROM ORIGINAL DELIVERY. THIS COMPANY ALSO RESERVES THE RIGHT TO FIELD INSPECT MATERIALS PRIOR TO REPLACEMENT OR RECONDITIONING OF MATERIALS AND WILL NOT BE LIABLE FOR CHARGES FROM WORK DONE IN THE FIELD WITHOUT PRIOR AUTHORIZATION FROM THIS COMPANY.

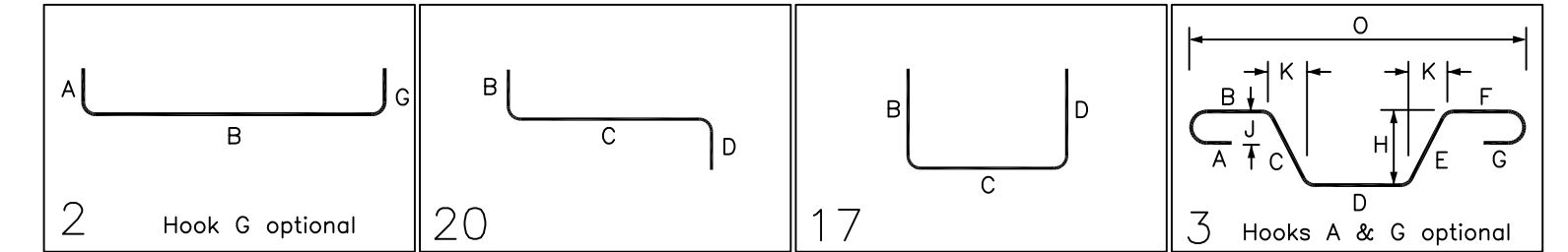
REINFORCING STEEL PLACING DRAWING ONLY. USE IN CONJUNCTION WITH CONTRACT DRAWINGS & SPECIFICATIONS. ELEVATIONS & DIMENSIONS SHOWN ON DRAWING ARE FOR DETAILING PURPOSES ONLY AND SHOULD NOT BE USED FOR CONSTRUCTION UNLESS VERIFIED BY ENGINEER OR CONTRACTOR.

FOR REINFORCEMENT CONTINUATION REFER PART - B SHOP DRAWING



Release Number: R03

Bar Mark	Qty	Size	Total Length	Type	'A'	'B'	'C'	'D'	'E'	'F'	'G'	'H'	'I'	'J'	'K'	'L'
4A08	6	#4	4'-8"	2	0'-8"	4'-0"										
5A01	2	#5	21'-4"	20	1'-0"	19'-4"	1'-0"									
5A02	2	#5	5'-8"	17	1'-0"	4'-8"										
5A03	4	#5	40'-0"	17	1'-0"	39'-0"										
5A05	2	#5	11'-5"	17	1'-0"	9'-5"	1'-0"									
5A06	4	#5	5'-8"	20	2'-4"	1'-0"	2'-4"									
5A07	2	#5	25'-0"	17	1'-0"	24'-0"										
5A08	4	#5	8'-0"	3	1'-0"	7'-0"				3'-5"		6'-2"	7'-2"			
5A24	2	#5	18'-3"	17	1'-0"	17'-3"										



**PLAN VIEW**  
REF:7/S3.50  
SCALE: 1/4" = 1'-0"

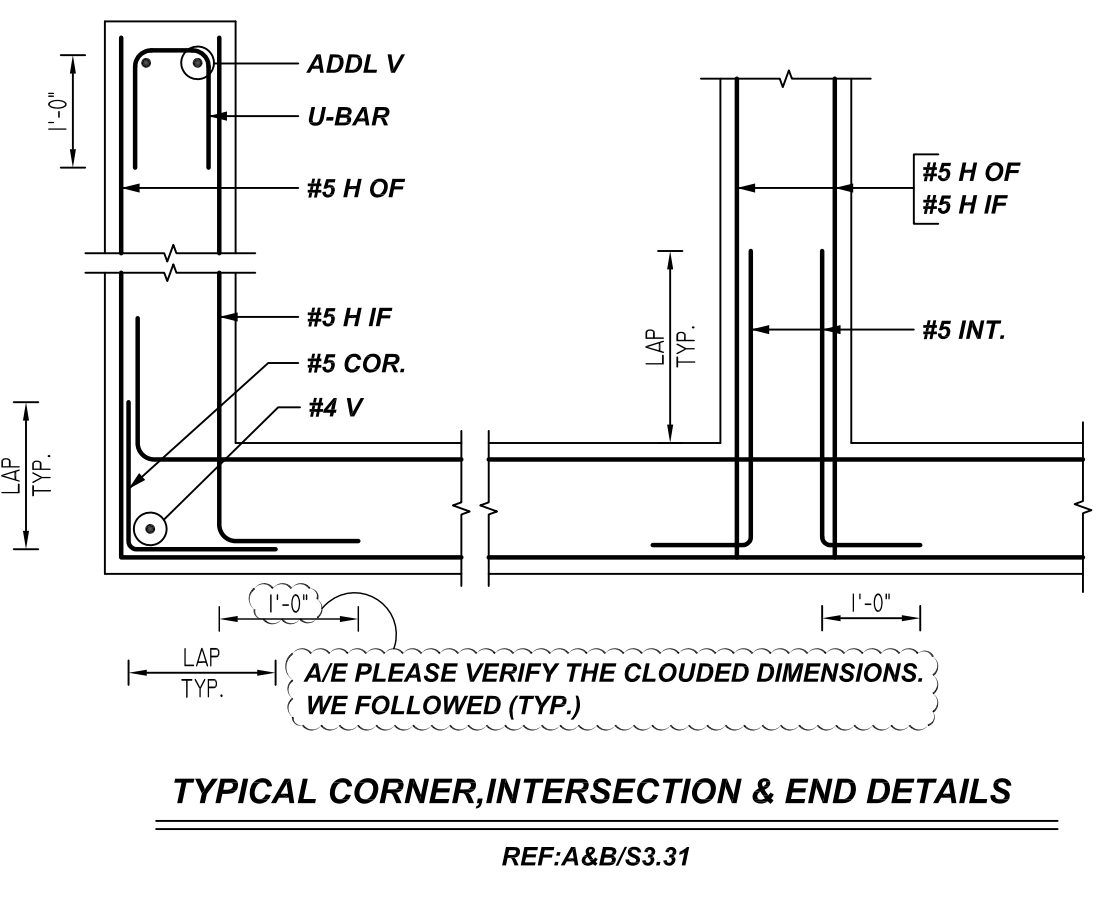
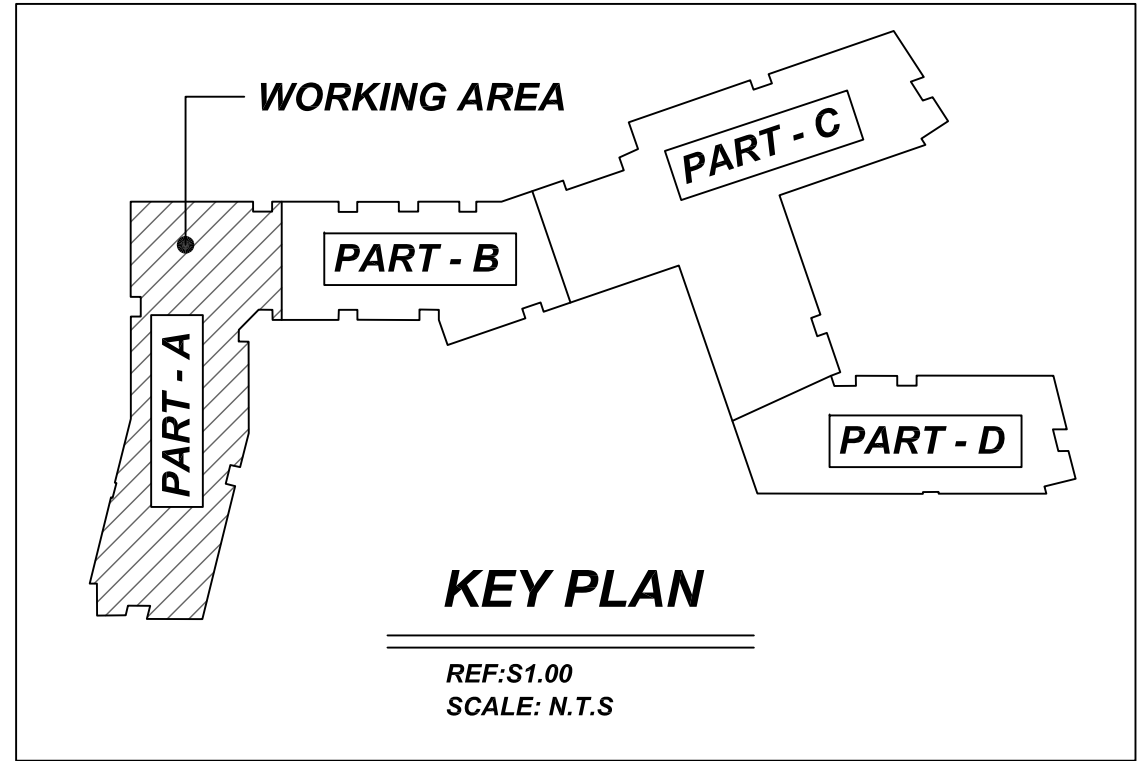
**ALL BARS IN THIS DRAWING  
ASTM A615 GRADE 60  
BLACK UNCOATED**

- NOTES**
- TYPICAL CLEARANCES ARE AS FOLLOWS:  
FOLLOW MINIMUM COVER IN ACCORDANCE WITH  
FOUNDATION CONC. WALL  
BOT = 3" TOP = 2"  
SIDE = 3" TOP = 2"  
TOP = 2"
  - ALL DIMENSIONS ARE FEET AND INCHES U.N.O
  - GC PLEASE VERIFY THE CLOUDED ITEMS
- A/E PLEASE VERIFY COVER DETAILS

**LAP SCHEDULE  
@ CONC. WALL**

4000 PSI (CLASS-B) CASE - 1  
Per ACI :318 (12.2.2)

BAR#	LENGTHS	
	TOP	OTHERS
#3	2'-0"	1'-7"
#4	2'-8"	2'-1"
#5	3'-4"	2'-7"
#6	4'-0"	3'-1"
#7	5'-10"	4'-6"
#8	6'-8"	5'-2"
#9	7'-7"	5'-10"
#10	8'-6"	6'-7"
#11	9'-5"	7'-3"



**REBAR GRADE 60 ASTM A-615**

SPLICES USED		ABBREVIATIONS	BAR MARK SIZE EQUIVALENT	
CLASS B 4,000 psi UNO			Imperial	Soft Metric
TOP BARS	OTHER BARS	ADD. = Additional	#3	#10
#3	#3	B.O.W. = Bottom of wall	#4	#13
#4	#4	C.B. = Corner Bars	#5	#16
#5	#5	DIAG. = Diagonal	#6	#19
#6	#6	D.O. = Door Opening	#7	#22
#7	#7	DWLS. = Dowels	#8	#25
#8	#8	E.F. = Each Face	#9	#29
#9	#9	E.S. = Each Side	#10	#32
#10	#10	E.W. = Each Way	#11	#36
#11	#11	FTG. = Footing		
#14	#14	F.F. = Far Face		
		HORIZ. = Horizontal		
		I.F. = Inside Face		
		INTERS. = Intersection		
		L.W. = long Way		
		N.F. = Near Face		
		O.F. = Outside Face		
		S.W. = Short Way		
		T&B = Top & Bottom		
		T.O.W. = Top of Wall		
		Trans. = Transverse		
		VERT. = Vertical		

**PART - A KEY PLAN**  
REF:1&2/S1.00A  
SCALE: 1/8" = 1'-0"

**SAUGUS RIDGE**  
PART - A FOUNDATION REINFORCEMENT DETAILS  
**MASSACHUSETTS 02184**

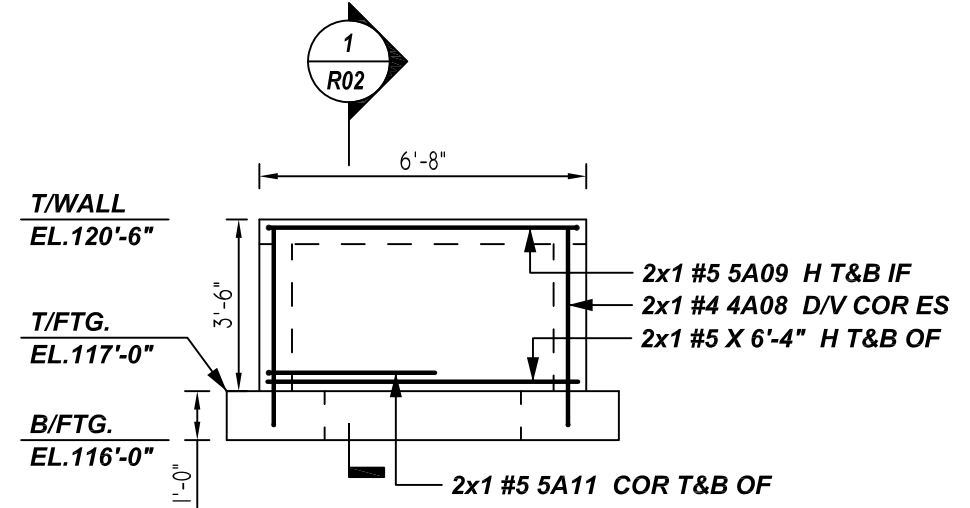
CUSTOMER: CALLAHAN  
DESIGNER: -

DRAWN BY	DATE	JOB NO	SHEET NO.
JP/MET	03.14.22	M92270187P	R03

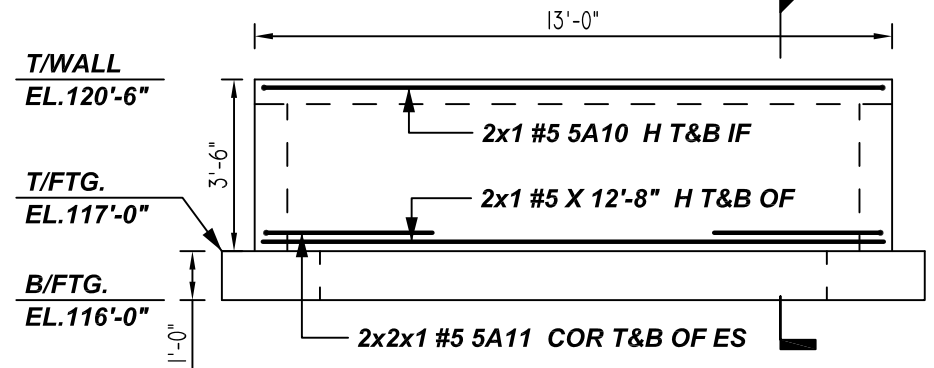
REV NO	DATE	APPROVAL	REV NO	DATE	SENT FOR
0	03.14.22				

**NOTICE**  
 SHORTAGES, IMPROPER FABRICATION OR CLAIMS FOR ANY OTHER REASON MUST BE REPORTED TO THIS COMPANY WITHIN 10 DAYS FROM ORIGINAL DELIVERY. THIS COMPANY ALSO RESERVES THE RIGHT TO FIELD INSPECT MATERIALS PRIOR TO REPLACEMENT OR RECONDITIONING OF MATERIALS AND WILL NOT BE LIABLE FOR CHARGES FROM WORK DONE IN THE FIELD WITHOUT PRIOR AUTHORIZATION FROM THIS COMPANY.

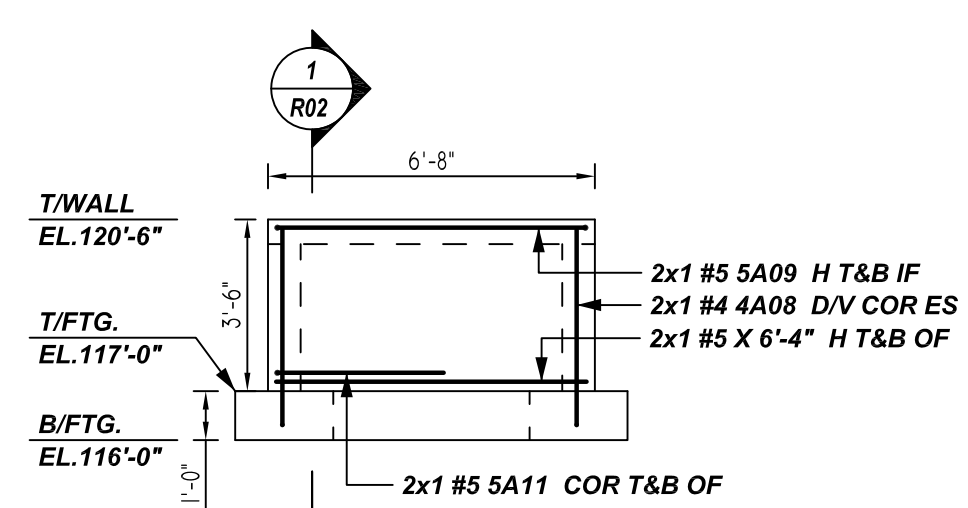
REINFORCING STEEL PLACING DRAWING ONLY. USE IN CONJUNCTION WITH CONTRACT DRAWINGS & SPECIFICATIONS. ELEVATIONS & DIMENSIONS SHOWN ON DRAWING ARE FOR DETAILING PURPOSES ONLY AND SHOULD NOT BE USED FOR CONSTRUCTION UNLESS VERIFIED BY ENGINEER OR CONTRACTOR.



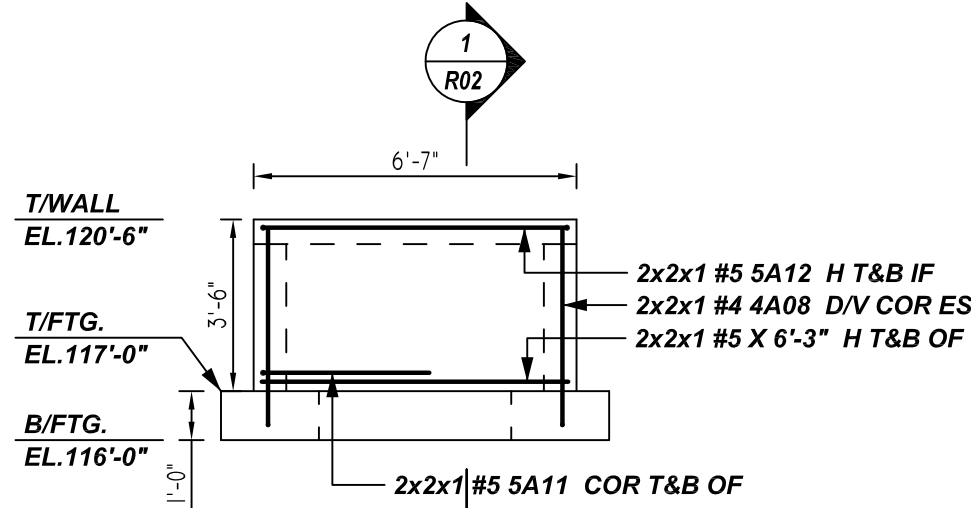
**H ELEVATION**  
 REF: 7/S3.50  
 SCALE: 1/4" = 1'-0"



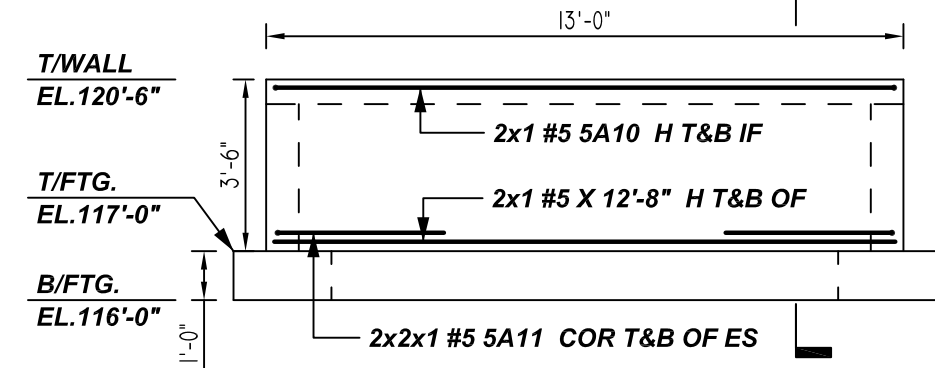
**J ELEVATION**  
 REF: 7/S3.50  
 SCALE: 1/4" = 1'-0"



**K ELEVATION**  
 REF: 7/S3.50  
 SCALE: 1/4" = 1'-0"

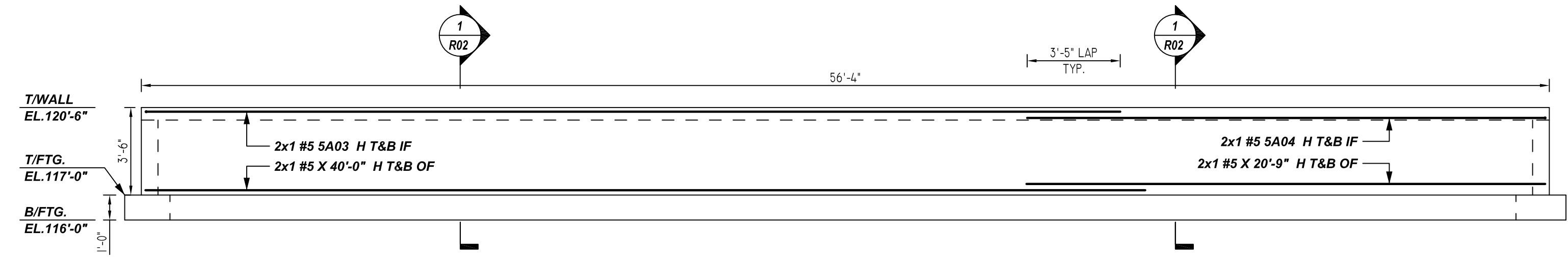


**N ELEVATION**  
 REF: 7/S3.50  
 SCALE: 1/4" = 1'-0"

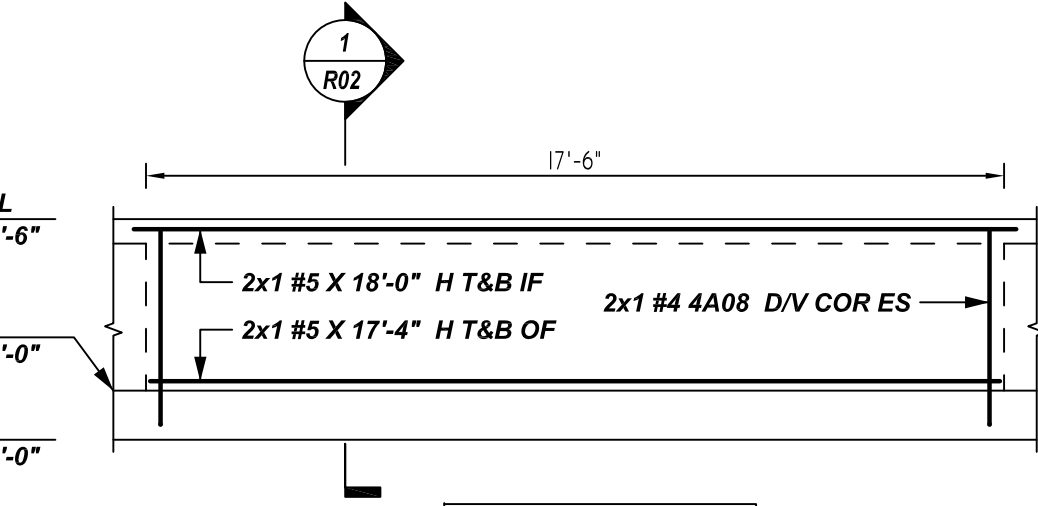


**P ELEVATION**  
 REF: 7/S3.50  
 SCALE: 1/4" = 1'-0"

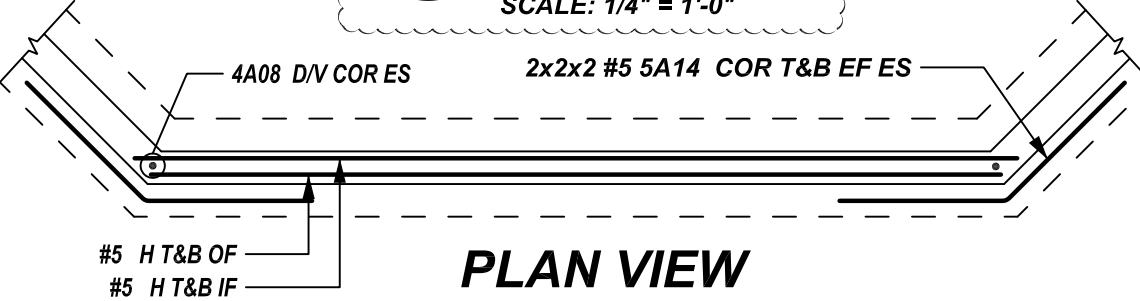
A/E PLEASE VERIFY THE CLOUDED WALL HORIZONTAL REINFORCEMENTS, SINCE IT IS NOT GIVEN IN THE STRUCTURAL DRAWINGS. SO WE FOLLOWED WALL HORIZONTAL REINFORCEMENTS AS PER SECTION - 13/S3.50 DETAILS (TYP.)



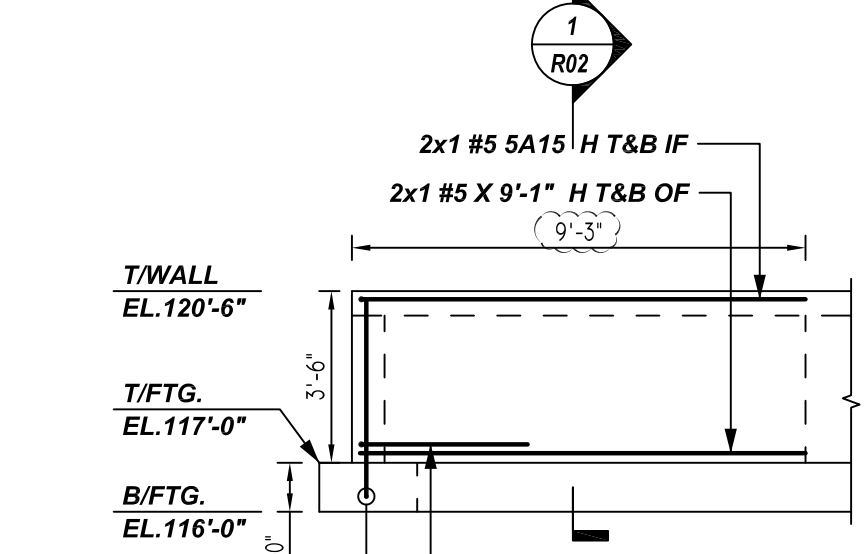
**L ELEVATION**  
 REF: 7/S3.50  
 SCALE: 1/4" = 1'-0"



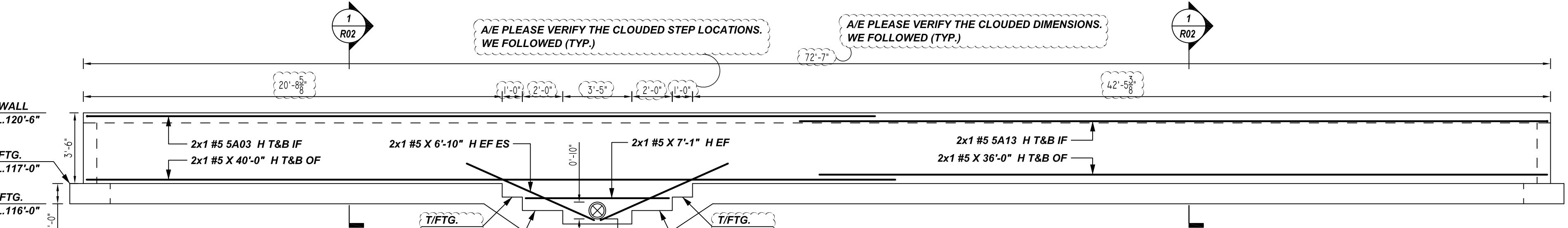
**R ELEVATION**  
 REF: 7/S3.50  
 SCALE: 1/4" = 1'-0"



**PLAN VIEW**  
 REF: 7/S3.50  
 SCALE: 1/4" = 1'-0"



**Q ELEVATION**  
 REF: 7/S3.50  
 SCALE: 1/4" = 1'-0"

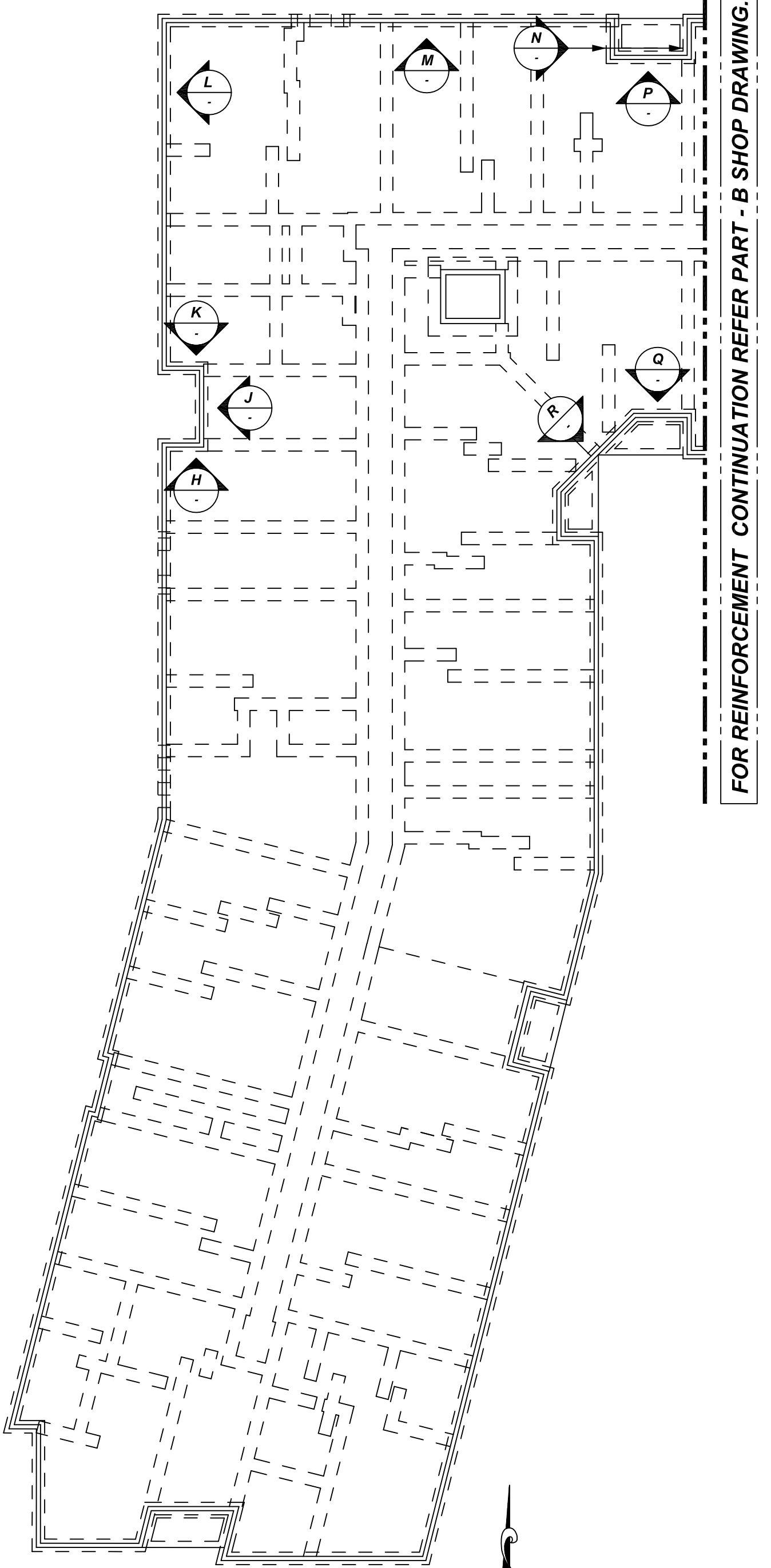


**M ELEVATION**  
 REF: 7/S3.50  
 SCALE: 1/4" = 1'-0"

A/E PLEASE VERIFY THE CLOUDED STEP LOCATIONS, WE FOLLOWED (TYP.)

A/E PLEASE VERIFY THE CLOUDED DIMENSIONS, WE FOLLOWED (TYP.)

A/E PLEASE VERIFY THE CLOUDED ELEVATIONS, WE FOLLOWED (TYP.)



**PART - A KEY PLAN**  
 REF: 162/S1.00A  
 SCALE: 1/8" = 1'-0"

Release Number: R04

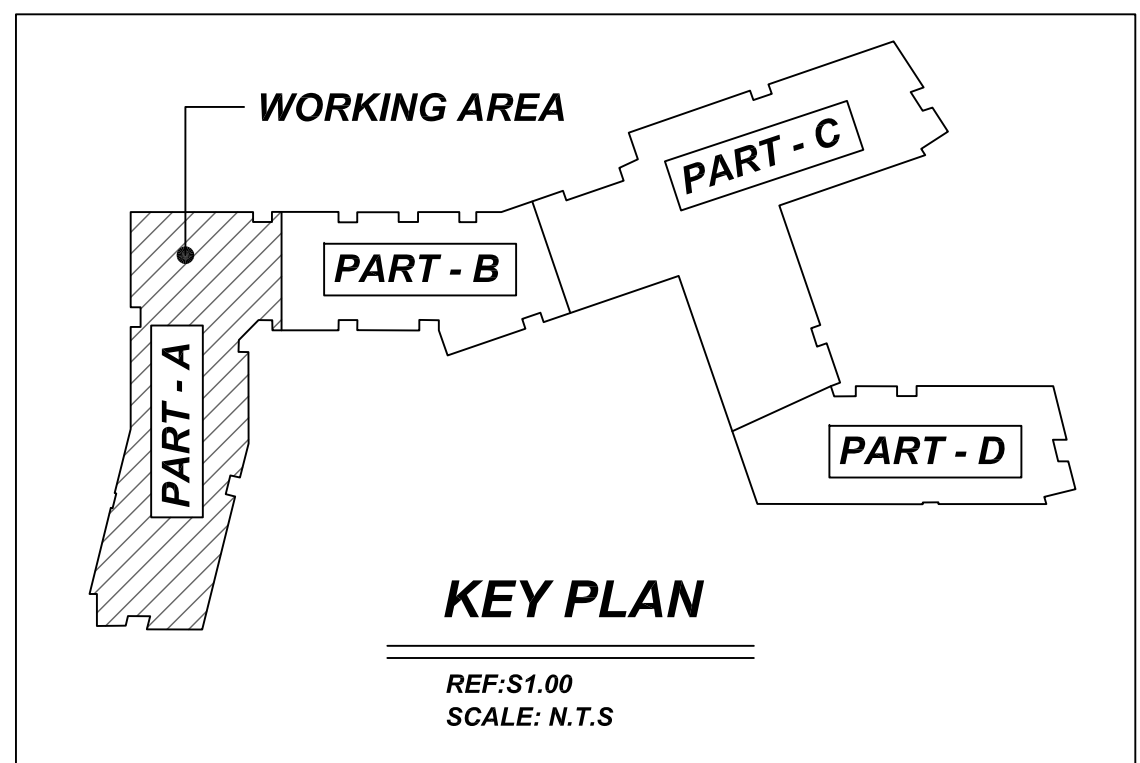
Bar Mark	Qty	Size	Total Length	Type	A'	B'	C'	D'	E'	F'	G'	H'	I'	J'	K'	L'
4A08	11	#4	4'-8"	2	0'-8"	4'-0"										
5A03	4	#5	40'-0"	17	1'-0"	39'-0"										
5A04	2	#5	21'-9"	17	1'-0"	20'-9"										
5A09	4	#5	8'-4"	20	1'-0"	6'-4"	1'-0"									
5A10	4	#5	14'-8"	17	1'-0"	12'-8"	1'-0"									
5A11	18	#5	6'-10"	17	3'-5"	3'-5"										
5A12	4	#5	8'-3"	20	1'-0"	6'-3"	1'-0"									
5A13	2	#5	38'-0"	17	1'-0"	37'-0"										
5A14	8	#5	6'-9 3/4"	3	3'-5"	3'-4 1/4"			2'-5 1/2"		2'-4 1/2"	5'-9 1/2"				
5A15	2	#5	10'-1"	17	1'-0"	9'-1"										

**ALL BARS IN THIS DRAWING  
 ASTM A615 GRADE 60  
 BLACK UNCOATED**

**LAP SCHEDULE  
 @ CONC. WALL**

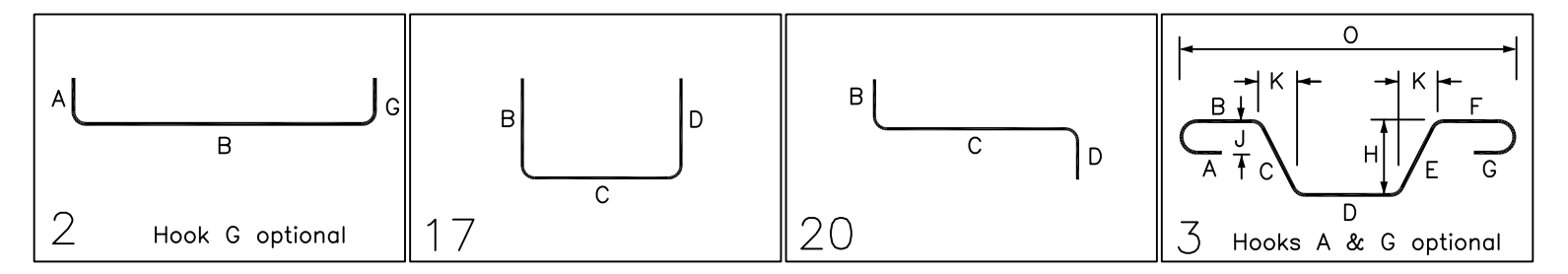
4000 PSI (CLASS-B) CASE - 1  
 Per ACI :318 (12.2.2)

BAR#	LENGTHS	
	TOP	OTHERS
#3	2'-0"	1'-7"
#4	2'-8"	2'-1"
#5	3'-4"	2'-7"
#6	4'-0"	3'-1"
#7	5'-10"	4'-6"
#8	6'-8"	5'-2"
#9	7'-7"	5'-10"
#10	8'-6"	6'-7"
#11	9'-5"	7'-3"



**NOTES**

- TYPICAL CLEARANCES ARE AS FOLLOWS:  
 FOLLOW MINIMUM COVER IN ACCORDANCE WITH FOUNDATION CONC. WALL  
 BOT = 3" TOP = 2"  
 SIDE = 3" TOP = 2"
- ALL DIMENSIONS ARE FEET AND INCHES U.N.O.
- PLEASE VERIFY THE CLOUDED ITEMS



A/E PLEASE VERIFY COVER DETAILS

**REBAR GRADE 60 ASTM A-615**

SPLICES USED		ABBREVIATIONS		BAR MARK SIZE EQUIVALENT	
CLASS B 4,000 psi UNO				Imperial	Soft Metric
TOP BARS	OTHER BARS	ADD.	Additional	#3	#10
#3	#3	B.O.W.	Bottom of wall	#4	#13
#4	#4	C.B.	Corner Bars	#5	#16
#5	#5	DIAG.	Diagonal	#6	#19
#6	#6	D.O.	Door Opening	#7	#22
#7	#7	DWLS.	Dowels	#8	#25
#8	#8	E.F.	Each Face	#9	#29
#9	#9	E.S.	Each Side	#10	#32
#10	#10	E.W.	Each Way	#11	#36
#11	#11	FTG.	Footing		
#14	#14	F.F.	Far Face		
		HORIZ.	Horizontal		
		I.F.	Inside Face		
		INTERS.	Intersection		
		L.W.	long Way		
		N.F.	Near Face		
		O.F.	Outside Face		
		S.W.	Short Way		
		T&B	Top & Bottom		
		T.O.W.	Top of Wall		
		Trans.	Transverse		
		VERT.	Vertical		

**SAUGUS RIDGE**  
 PART - A FOUNDATION REINFORCEMENT DETAILS  
**MASSACHUSETTS 02184**

CUSTOMER: CALLAHAN  
 DESIGNER: -

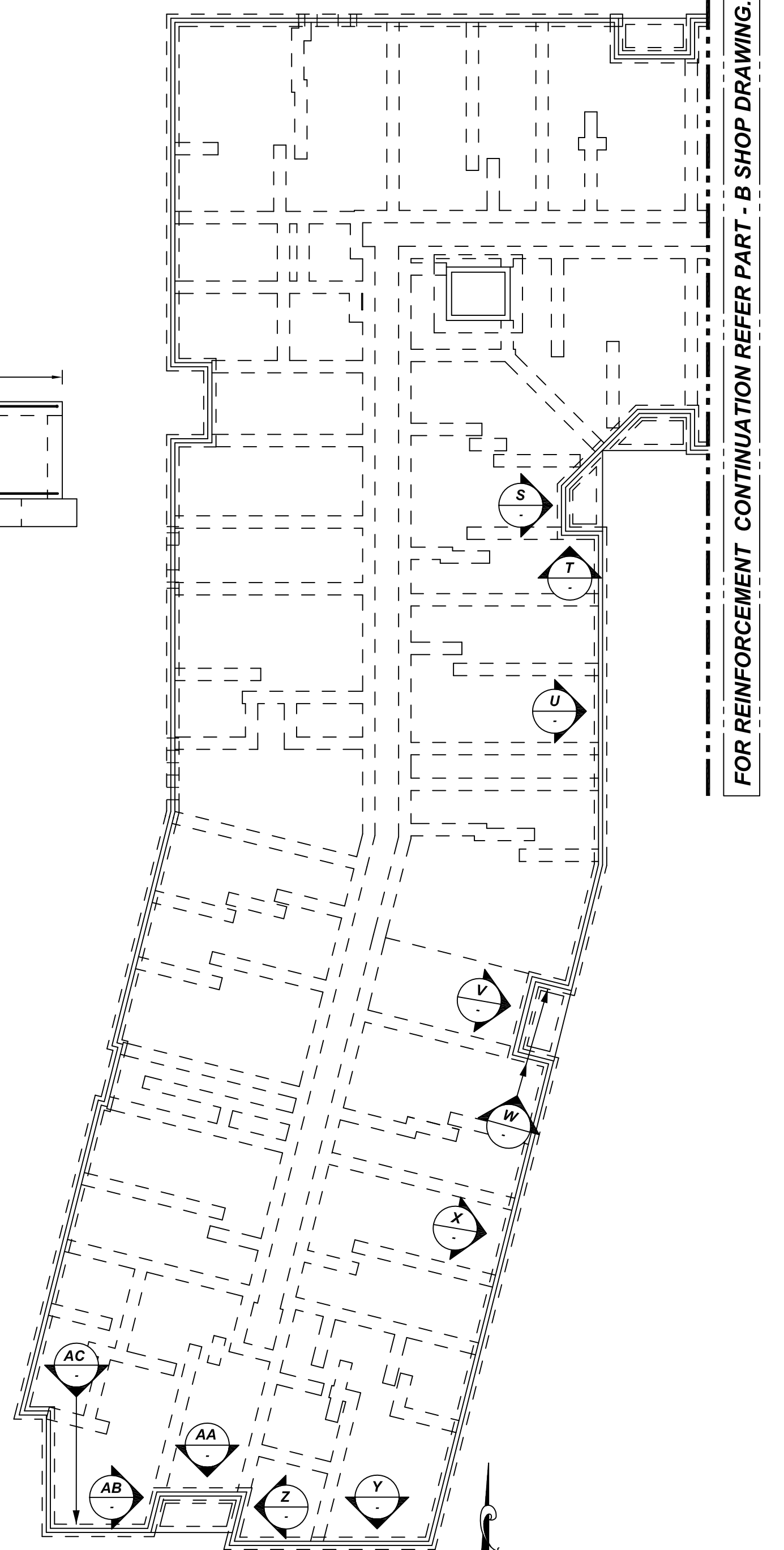
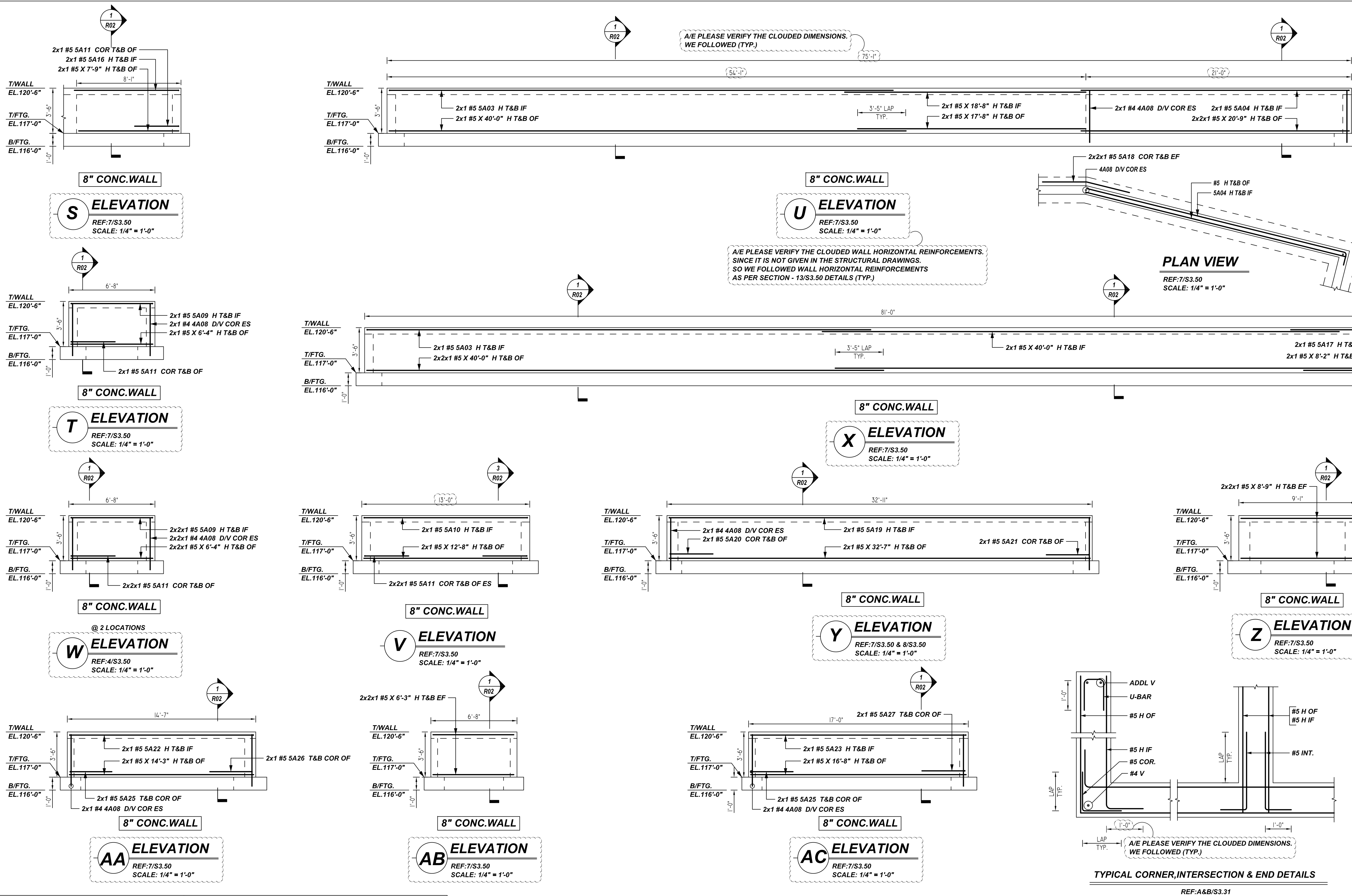
REV NO	DATE	APPROVAL	REV NO	DATE	SENT FOR
0	03.14.22				

DRAWN BY: JP/MET DATE: 03.14.22 JOB NO: M92270187P SHEET NO: R04

**NOTICE**

SHORTAGES, IMPROPER FABRICATION OR CLAIMS FOR ANY OTHER REASON MUST BE REPORTED TO THIS COMPANY WITHIN 10 DAYS FROM ORIGINAL DELIVERY. THIS COMPANY ALSO RESERVES THE RIGHT TO FIELD INSPECT MATERIALS PRIOR TO REPLACEMENT OR RECONDITIONING OF MATERIALS AND WILL NOT BE LIABLE FOR CHARGES FROM WORK DONE IN THE FIELD WITHOUT PRIOR AUTHORIZATION FROM THIS COMPANY.

REINFORCING STEEL PLACING DRAWING ONLY USE IN CONJUNCTION WITH CONTRACT DRAWINGS & SPECIFICATIONS. ELEVATIONS & DIMENSIONS SHOWN ON DRAWING ARE FOR DETAILING PURPOSES ONLY AND SHOULD NOT BE USED FOR CONSTRUCTION UNLESS VERIFIED BY ENGINEER OR CONTRACTOR.



FOR REINFORCEMENT CONTINUATION REFER PART - B SHOP DRAWING.

ALL BARS IN THIS DRAWING  
ASTM A615 GRADE 60  
BLACK UNCOATED

**NOTES**

- 1. TYPICAL CLEARANCES ARE AS FOLLOWS:  
FOLLOW MINIMUM COVER IN ACCORDANCE WITH  
FOUNDATION CONC. WALL  
BOT = 3" TOP = 2"  
SIDE = 3" SIDE = 2"  
TOP = 2"
- 2. ALL DIMENSIONS ARE FEET AND INCHES U.N.O.
- 3. GC PLEASE VERIFY THE CLOUDED ITEMS.

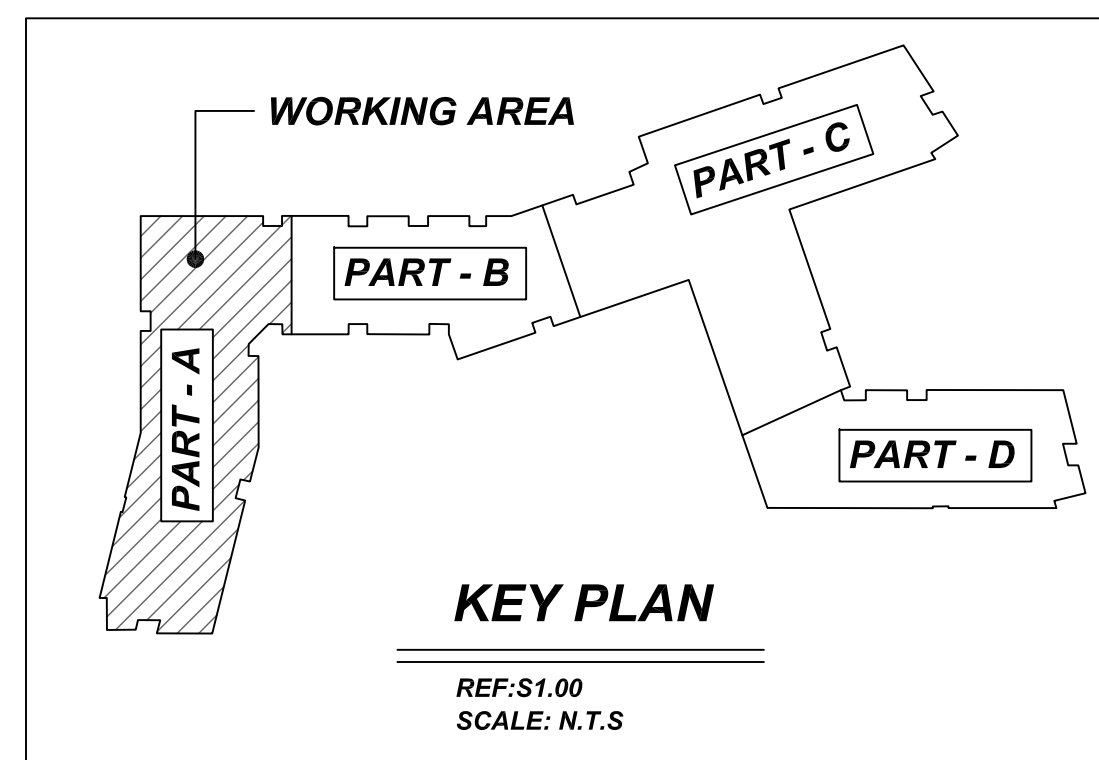
A/E PLEASE VERIFY COVER DETAILS

**LAP SCHEDULE**

**@ CONC. WALL**

4000 PSI (CLASS-B) CASE - 1  
Per ACI :318 (12.2.2)

BAR#	LENGTHS	
	TOP	OTHERS
#3	2'-0"	1'-7"
#4	2'-8"	2'-1"
#5	3'-4"	2'-7"
#6	4'-0"	3'-1"
#7	5'-10"	4'-6"
#8	6'-8"	5'-2"
#9	7'-7"	5'-10"
#10	8'-6"	6'-7"
#11	9'-5"	7'-3"



**REBAR GRADE 60 ASTM A-615**

**SPLICES USED**

CLASS B 4,000 psi UNO	TOP BARS	OTHER BARS
#3	-	#3 -
#4	-	#4 -
#5	-	#5 -
#6	-	#6 -
#7	-	#7 -
#8	-	#8 -
#9	-	#9 -
#10	-	#10 -
#11	-	#11 -
#14	-	#14 -

**ABBREVIATIONS**

ABBREVIATIONS	BAR MARK SIZE EQUIVALENT
ADD.	#3
B.O.W.	#4
C.B.	#5
DIAG.	#6
D.O.	#7
DWLS.	#8
E.F.	#9
E.S.	#10
E.W.	#11
FTG.	#12
F.F.	#13
HORIZ.	#14
I.F.	#15
INTERS.	#16
L.W.	#17
N.F.	#18
O.F.	#19
S.W.	#20
T&B	#21
T.O.W.	#22
Trans.	#23
VERT.	#24

**SAUGUS RIDGE**  
PART - A FOUNDATION REINFORCEMENT DETAILS  
**MASSACHUSETTS 02184**  
CUSTOMER: CALLAHAN  
DESIGNER: -  
DRAWN BY: JP/MET DATE: 03.14.22  
JOB NO: M92270187P  
SHEET NO: R05

Release Number:	R05								
Bar Mark	Dty	Qty	Size	Total Length	Type	'X'	'Y'	'Z'	BENT BAR LIST
4A08	14	#4	4-8"	2	0-8"	4-0"			
5A03	4	#5	40-0"	17	1-0"	39'-0"			
5A04	2	#5	21-8"	12	1-0"	20'-9"			
5A09	6	#5	8-4"	20	1-0"	6'-4"	1-0"		
5A10	2	#5	14-8"	17	1-0"	12'-8"	1-0"		
5A11	12	#5	6-10"	17	3'-5"	3'-5"			
5A16	2	#5	9'-1"	17	1-0"	8'-1"			
5A17	2	#5	10'-2"	17	1-0"	9'-2"			
5A18	4	#5	6'-9"	3	3'-5"	3'-4"	0'-10"		
5A19	2	#5	34'-7"	17	1-0"	32'-7"	1-0"		
5A20	2	#5	6'-9"	3	3'-5"	3'-4"	3'-3"		
5A21	2	#5	6'-8"	21	3'-4"	3'-4"	0'-9"		
5A22	2	#5	16'-3"	17	1-0"	14'-3"	1-0"		
5A23	2	#5	17'-8"	17	1-0"	16'-8"			
5A25	4	#5	6'-7"	3	3'-4"	3'-3"	3'-2"		
5A26	2	#5	6'-7"	21	3'-4"	3'-4"	0'-9"		
5A27	2	#5	6'-8"	17	3'-4"	3'-4"			

