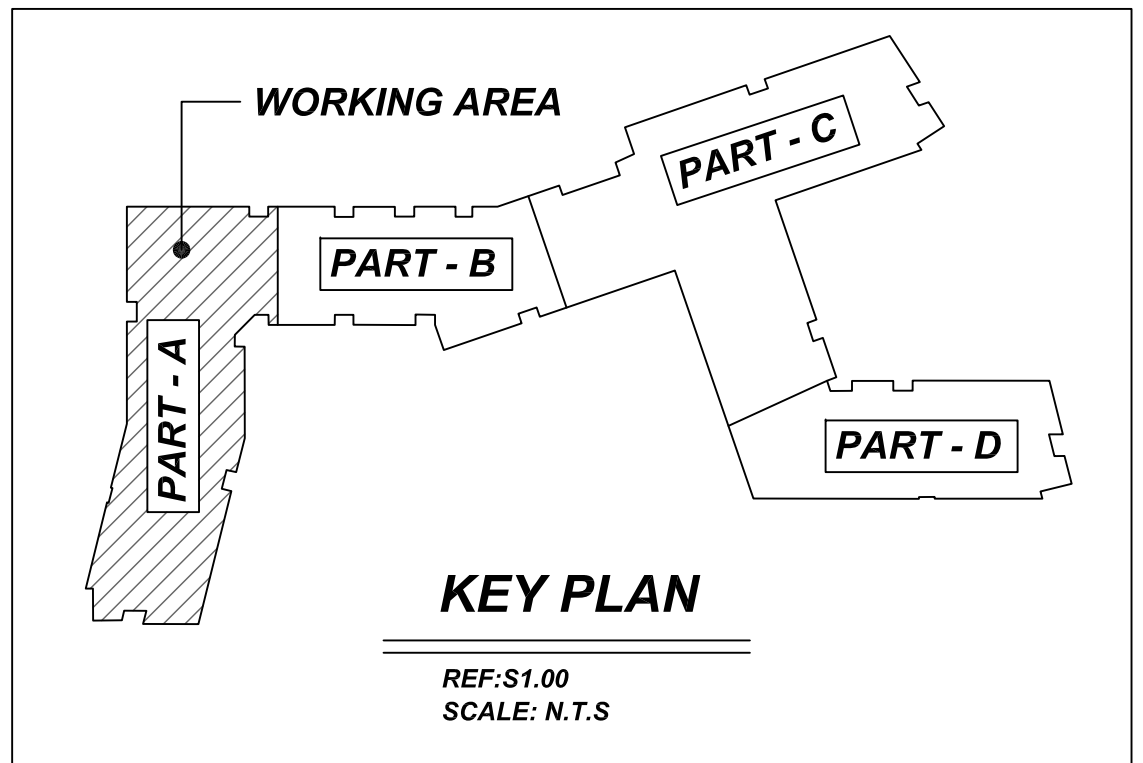


NOTICE
 SHORTAGES, IMPROPER FABRICATION OR CLAIMS FOR ANY OTHER REASON MUST BE REPORTED TO THIS COMPANY WITHIN 10 DAYS FROM ORIGINAL DELIVERY. THIS COMPANY ALSO RESERVES THE RIGHT TO FIELD INSPECT MATERIALS PRIOR TO REPLACEMENT OR RECONDITIONING OF MATERIALS AND WILL NOT BE LIABLE FOR CHARGES FROM WORK DONE IN THE FIELD WITHOUT PRIOR AUTHORIZATION FROM THIS COMPANY.

REINFORCING STEEL PLACING DRAWING ONLY. USE IN CONJUNCTION WITH CONTRACT DRAWINGS & SPECIFICATIONS. ELEVATIONS & DIMENSIONS SHOWN ON DRAWING ARE FOR DETAILING PURPOSES ONLY AND SHOULD NOT BE USED FOR CONSTRUCTION UNLESS VERIFIED BY ENGINEER OR CONTRACTOR.

**ALL BARS IN THIS DRAWING
 ASTM A615 GRADE 60
 BLACK UNCOATED**



LAP SCHEDULE @ FOUNDATION
 3500 PSI (CLASS-B) CASE - 1
 Per ACI :318 (12.2.2)

BAR#	LENGTHS	
	TOP	OTHERS
#3	26"	21"
#4	36"	28"
#5	43"	34"
#6	52"	41"
#7	76"	59"
#8	86"	67"
#9	98"	76"
#10	110"	85"
#11	121"	94"

LAP SCHEDULE @ CONC. WALL
 4000 PSI (CLASS-B) CASE - 1
 Per ACI :318 (12.2.2)

BAR#	LENGTHS	
	TOP	OTHERS
#3	2'-0"	1'-7"
#4	2'-8"	2'-1"
#5	3'-4"	2'-7"
#6	4'-0"	3'-1"
#7	5'-10"	4'-6"
#8	6'-8"	5'-2"
#9	7'-7"	5'-10"
#10	8'-6"	6'-7"
#11	9'-5"	7'-3"

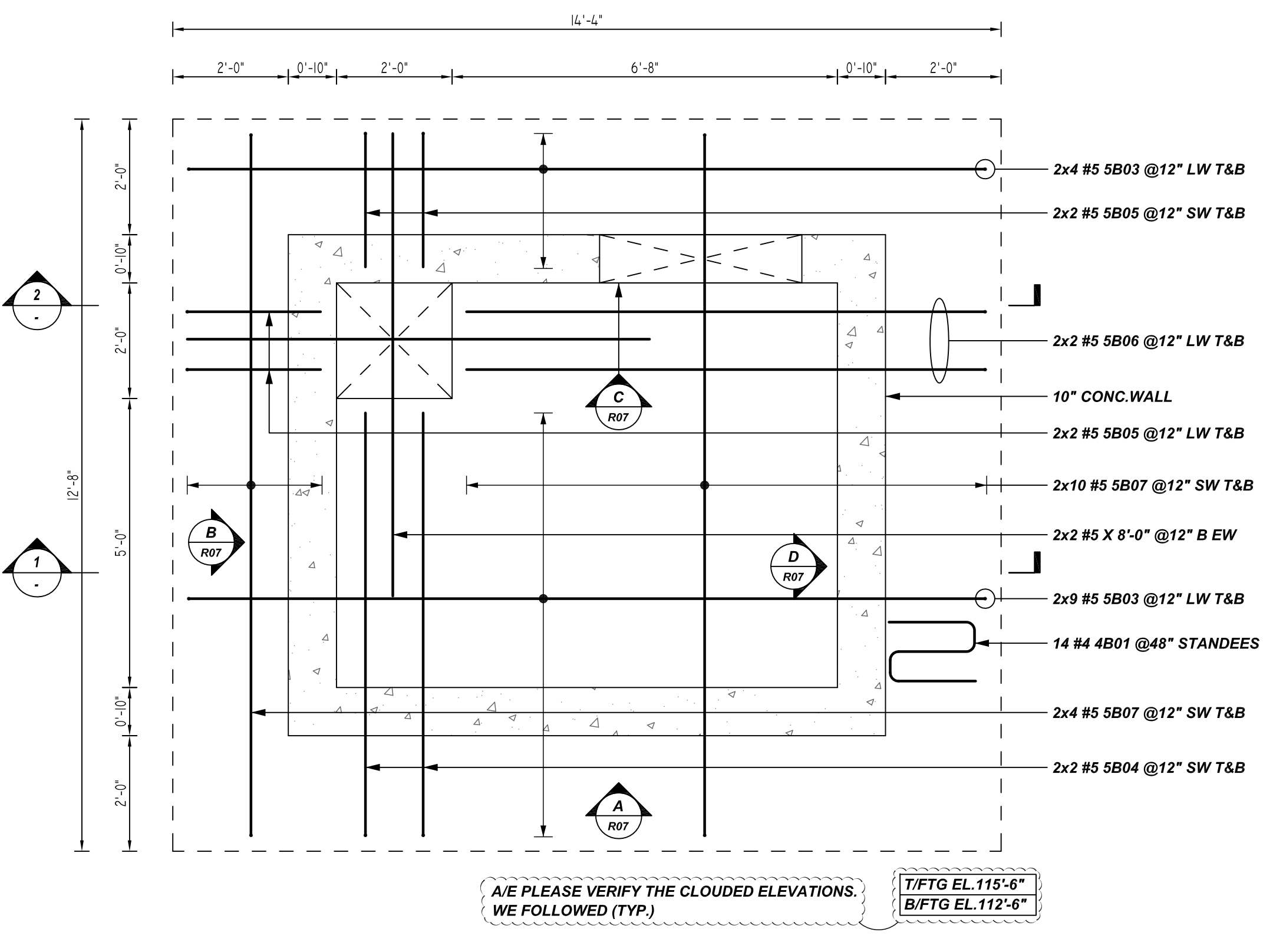
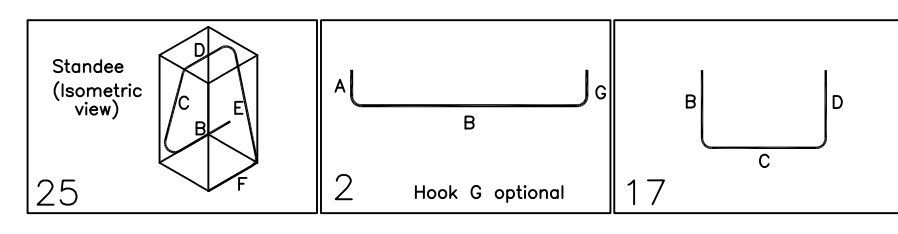
NOTES

- TYPICAL CLEARANCES ARE AS FOLLOWS:
 FOLLOW MINIMUM COVER IN ACCORDANCE WITH
 MAT FOOTING CONC. WALL
 BOT = 3" TOP = 2"
 SIDE = 3" SIDE = 2"
 TOP = 5"
- ALL DIMENSIONS ARE FEET AND INCHES U.N.O
- GC PLEASE VERIFY THE CLOUDED ITEMS

A/E PLEASE VERIFY THE CLOUDED COVER DETAILS WE FOLLOWED (TYP.)

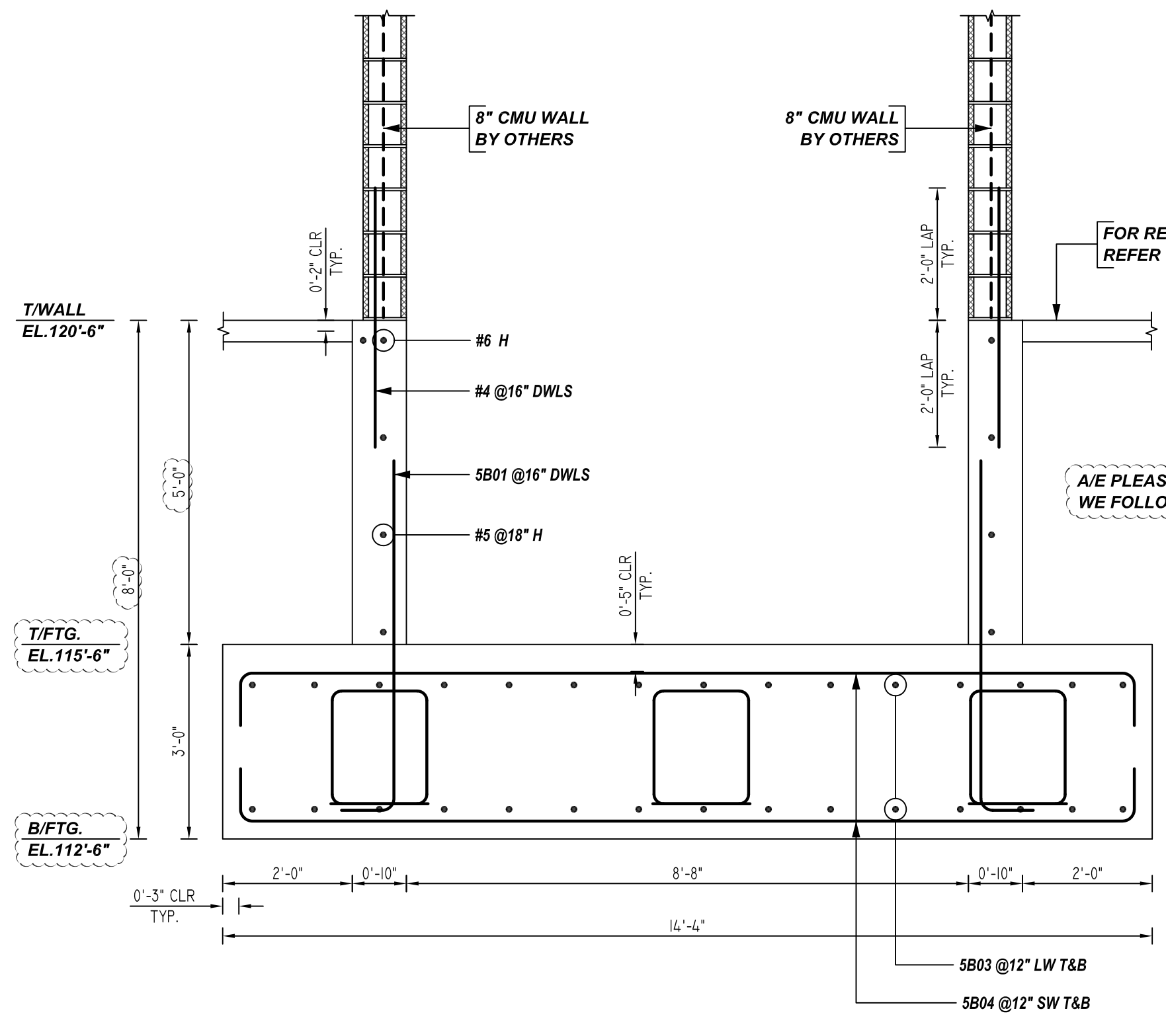
Release Number: R06

Bar Mark	Qty	Size	Total Length	Type	X	Y	Z	W	V	U	T	S	R	Q	P	O	N	M	L	K	J	I	H	G	F	E	D	C	B	A
4801	14	#4	8'-10 1/2"	25																										
5803	28	#5	15'-5 1/2"	2																										
5804	4	#5	8'-2 1/2"	2																										
5805	8	#5	3'-7 1/2"	2																										
5806	4	#5	9'-10 1/2"	2																										
5807	28	#5	15'-10 1/2"	2																										
5808	4	#5	5'-4 1/2"	17																										

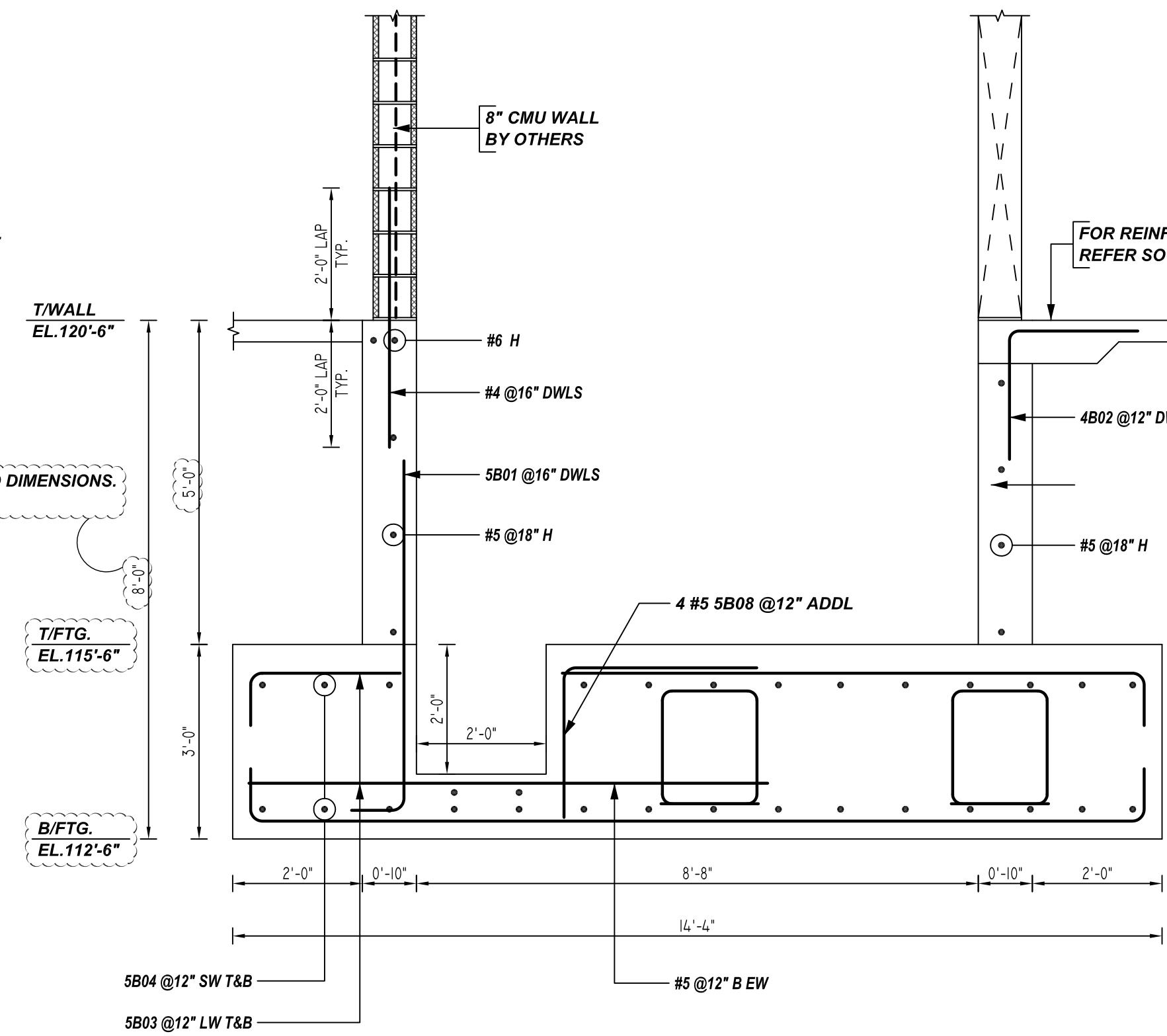


(MAT FOOTING & ELEVATOR PIT REINFORCEMENT DETAILS)

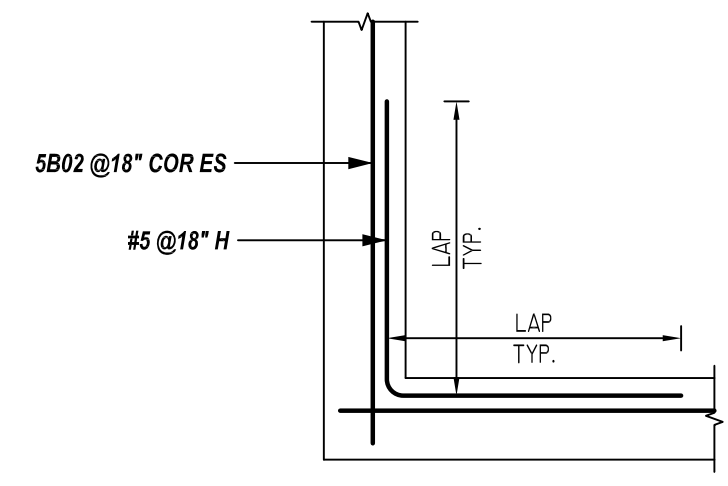
DETAIL-A
 SCALE: 1/2" = 1'-0"
 REF: S1.00A & F/S3.32



1 SECTION
 REF: F/S3.32
 SCALE: 1/2" = 1'-0"

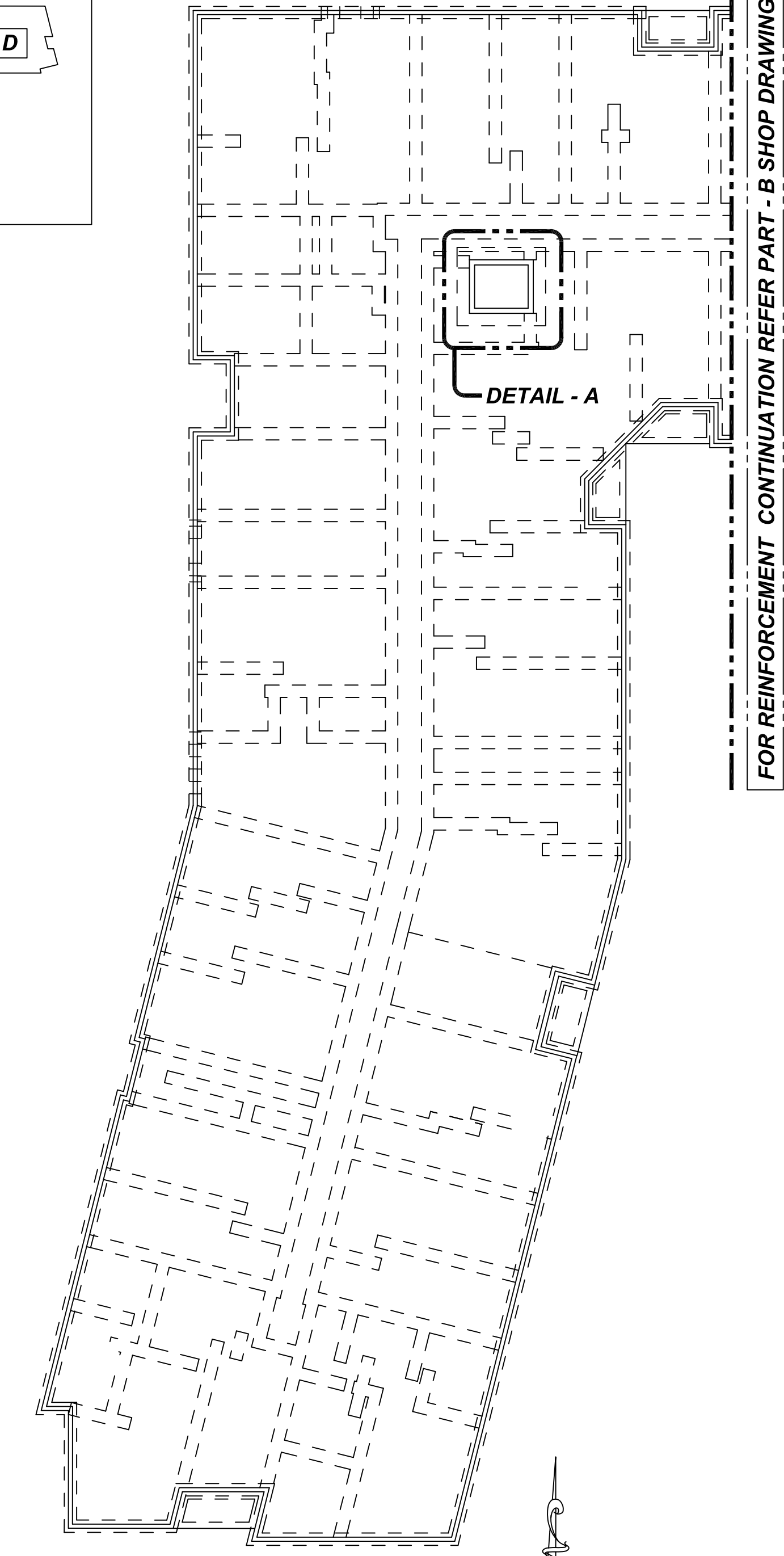


2 SECTION
 REF: F/S3.32
 SCALE: 1/2" = 1'-0"



TYPICAL WALL CORNER BAR DETAILS
 REF: -
 SCALE: 1/2" = 1'-0"

A/E PLEASE VERIFY THE FOOTING CORNER AND INTER SECTION DETAILS. SINCE, IT IS NOT GIVEN IN THE STRUCTURAL DRAWINGS. WE FOLLOWED (TYP.)



PART - A FOUNDATION KEY PLAN

REF: 1&2/S1.00A
 SCALE: 1/8" = 1'-0"

REBAR GRADE 60 ASTM A-615

SPLICES USED		ABBREVIATIONS		BAR MARK SIZE EQUIVALENT	
CLASS B 4,000 psi UNO				Imperial	Soft Metric
TOP BARS	OTHER BARS	ADD.	= Additional	#3	#10
#3	#3	B.O.W.	= Bottom of wall	#4	#13
#4	#4	C.B.	= Corner Bars	#5	#16
#5	#5	DIAG.	= Diagonal	#6	#19
#6	#6	D.O.	= Door Opening	#7	#22
#7	#7	DWLS.	= Dowels	#8	#25
#8	#8	E.F.	= Each Face	#9	#29
#9	#9	E.S.	= Each Side	#10	#32
#10	#10	E.W.	= Each Way	#11	#36
#11	#11	FTG.	= Footing		
#14	#14	F.F.	= Far Face		
		HORIZ.	= Horizontal		
		I.F.	= Inside Face		
		INTERS	= Intersection		
		L.W.	= long Way		
		N.F.	= Near Face		
		O.F.	= Outside Face		
		S.W.	= Short Way		
		T&B	= Top & Bottom		
		T.O.W.	= Top of Wall		
		Trans.	= Transverse		
		VERT.	= Vertical		

SAUGUS RIDGE
 PART - A MAT FOOTING & ELEVATOR PIT REINFORCEMENT DETAILS
MASSACHUSETTS 02184

CUSTOMER: CALLAHAN
 DESIGNER: -

REV NO	DATE	APPROVAL	REV NO	DATE	SENT FOR
0	03.14.22				

DRAWN BY	DATE	JOB NO	SHEET NO.
JP/MET	03.14.22	M92270187P	R06

NOTICE

SHORTAGES, IMPROPER FABRICATION OR CLAIMS FOR ANY OTHER REASON MUST BE REPORTED TO THIS COMPANY WITHIN 10 DAYS FROM ORIGINAL DELIVERY. THIS COMPANY ALSO RESERVES THE RIGHT TO FIELD INSPECT MATERIALS PRIOR TO REPLACEMENT OR RECONDITIONING OF MATERIALS AND WILL NOT BE LIABLE FOR CHARGES FROM WORK DONE IN THE FIELD WITHOUT PRIOR AUTHORIZATION FROM THIS COMPANY.

REINFORCING STEEL PLACING DRAWING ONLY. USE IN CONJUNCTION WITH CONTRACT DRAWINGS & SPECIFICATIONS. ELEVATIONS & DIMENSIONS SHOWN ON DRAWING ARE FOR DETAILING PURPOSES ONLY AND SHOULD NOT BE USED FOR CONSTRUCTION UNLESS VERIFIED BY ENGINEER OR CONTRACTOR.

**ALL BARS IN THIS DRAWING
ASTM A615 GRADE 60
BLACK UNCOATED**

NOTES

- TYPICAL CLEARANCES ARE AS FOLLOWS:
FOLLOW MINIMUM COVER IN ACCORDANCE WITH
MAT FOOTING CONC. WALL
BOT = 3" TOP = 2"
SIDE = 3" SIDE = 2"
TOP = 5"
- ALL DIMENSIONS ARE FEET AND INCHES U.N.O
- GC PLEASE VERIFY THE CLOUDED ITEMS

A/E PLEASE VERIFY THE CLOUDED COVER DETAILS WE FOLLOWED (TYP.)

LAP SCHEDULE @ FOUNDATION

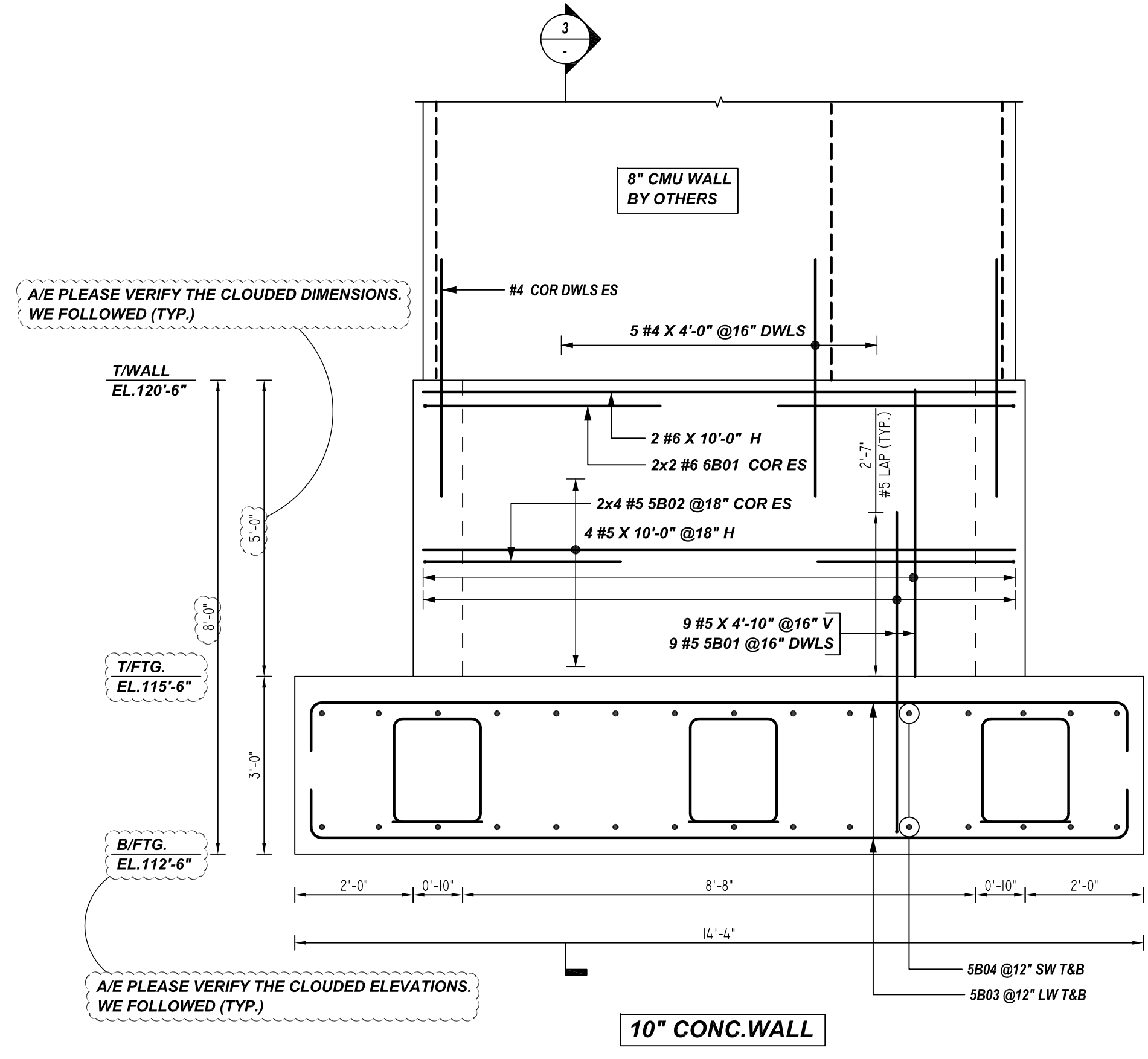
3500 PSI (CLASS-B) CASE - 1
Per ACI 318 (12.2.2)

BAR#	LENGTHS	
	TOP	OTHERS
#3	26"	21"
#4	36"	28"
#5	43"	34"
#6	52"	41"
#7	76"	59"
#8	86"	67"
#9	98"	76"
#10	110"	85"
#11	121"	94"

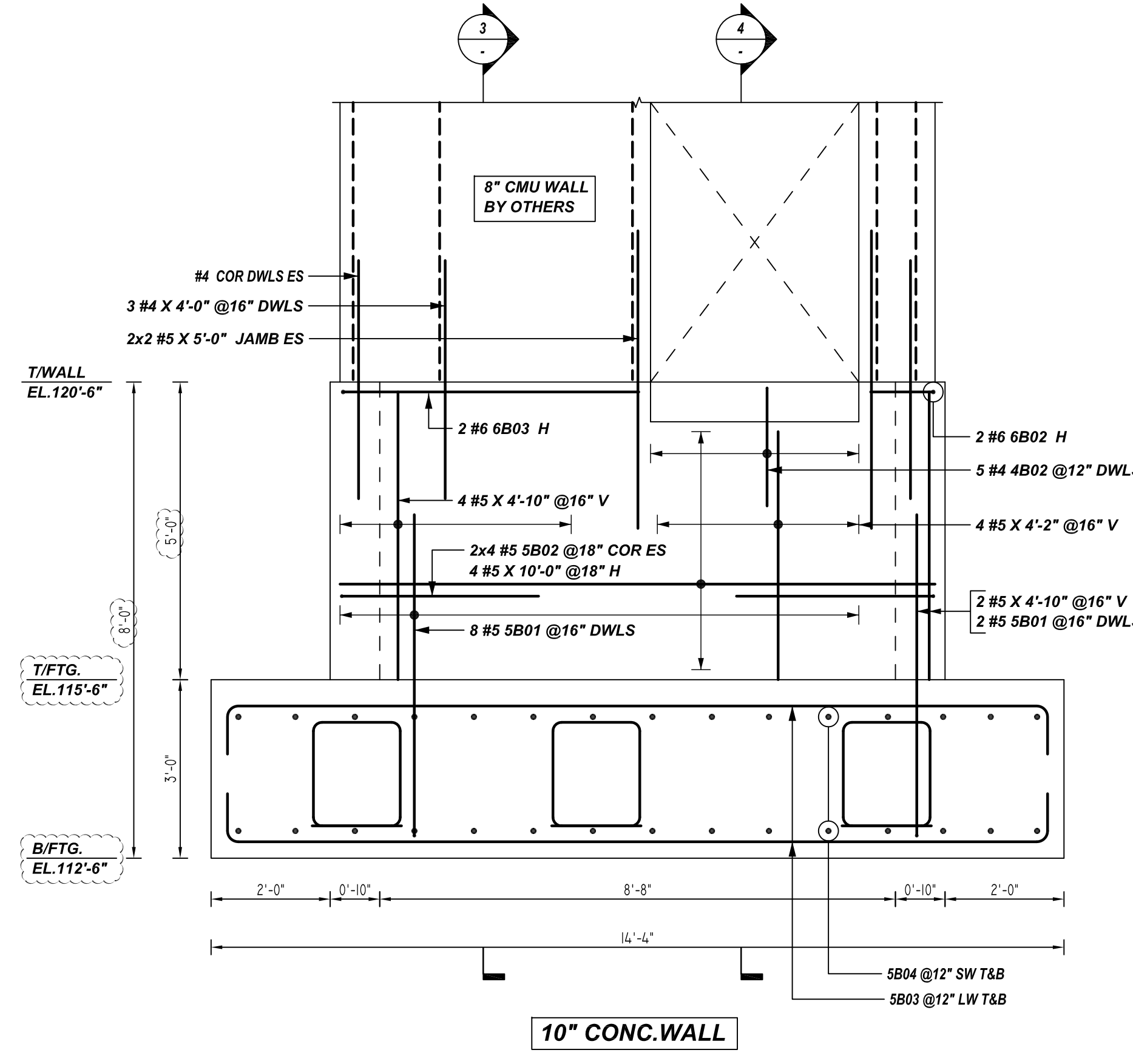
LAP SCHEDULE @ CONC. WALL

4000 PSI (CLASS-B) CASE - 1
Per ACI 318 (12.2.2)

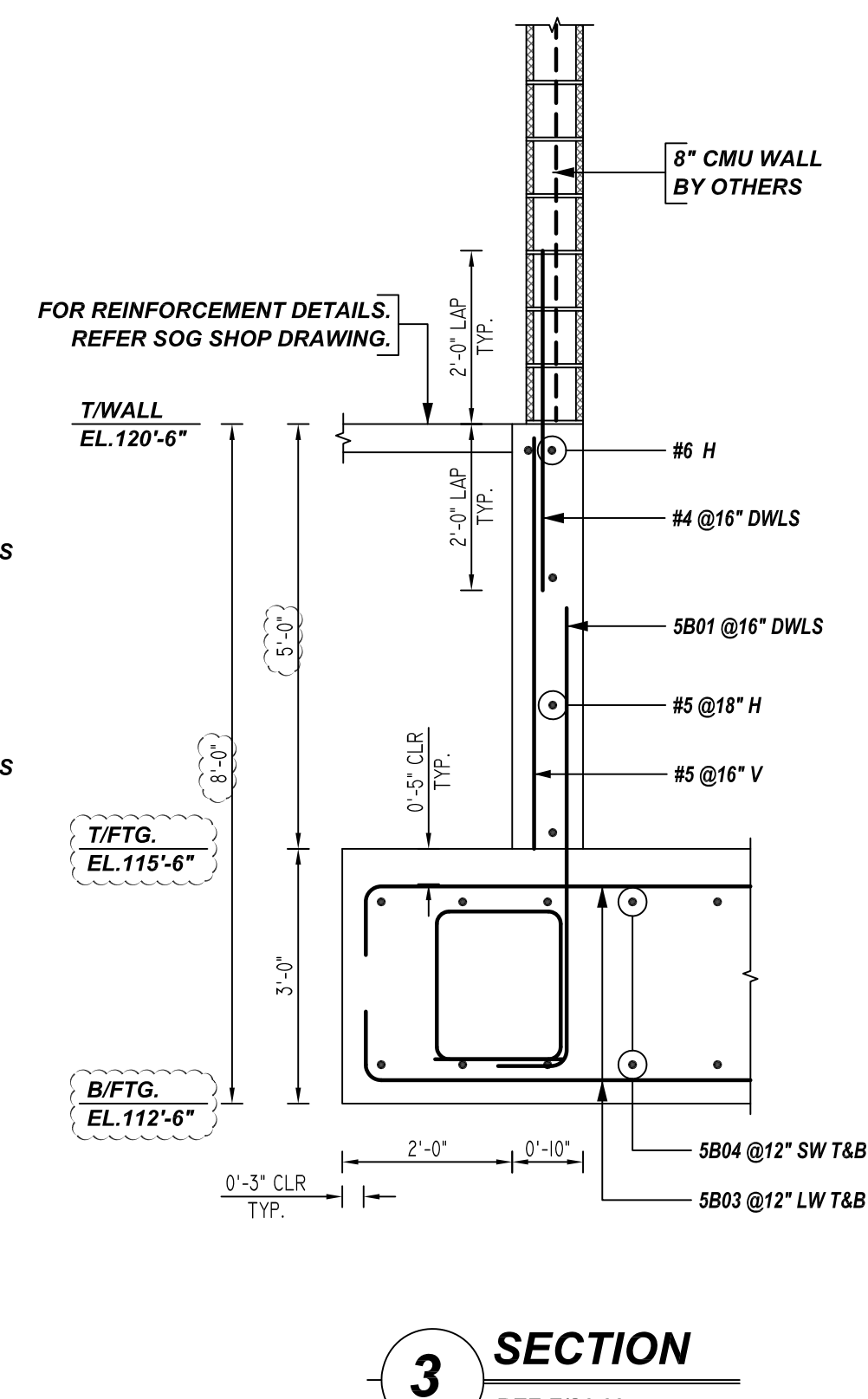
BAR#	LENGTHS	
	TOP	OTHERS
#3	2'-0"	1'-7"
#4	2'-8"	2'-1"
#5	3'-4"	2'-7"
#6	4'-0"	3'-1"
#7	5'-10"	4'-6"
#8	6'-8"	5'-2"
#9	7'-7"	5'-10"
#10	8'-6"	6'-7"
#11	9'-5"	7'-3"



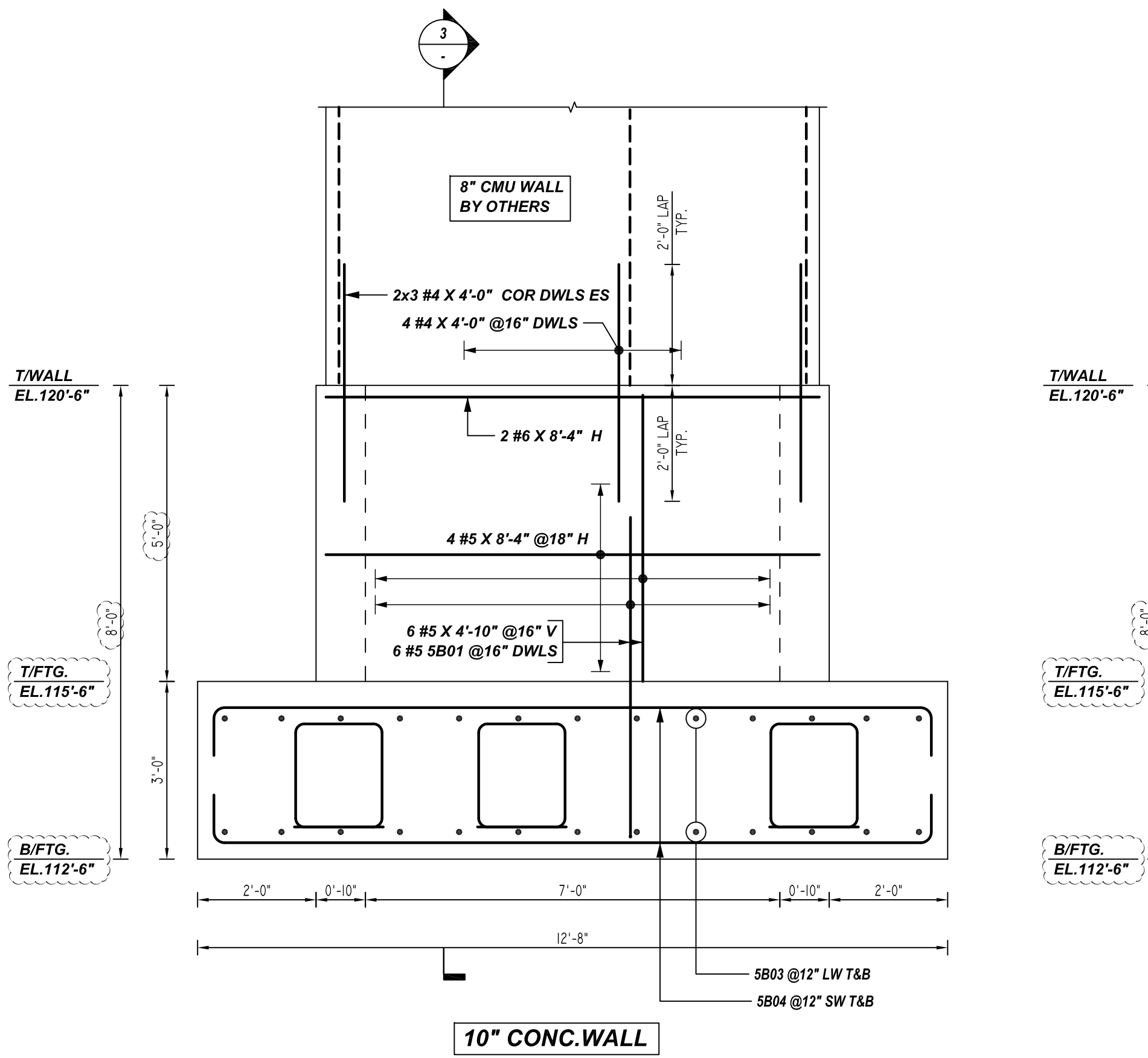
A ELEVATION
REF: F/S3.32
SCALE: 1/2" = 1'-0"



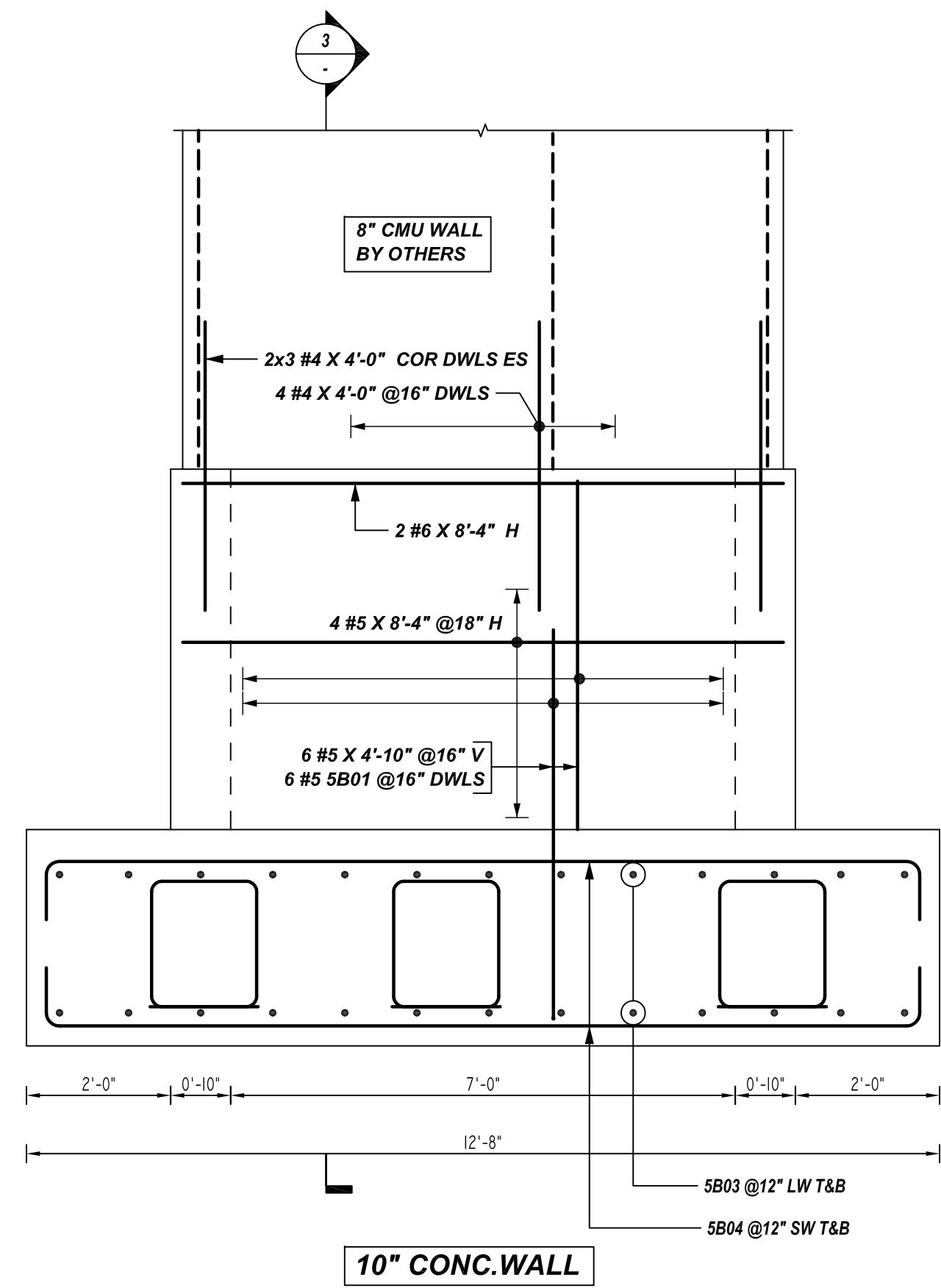
C ELEVATION
REF: F/S3.32
SCALE: 1/2" = 1'-0"



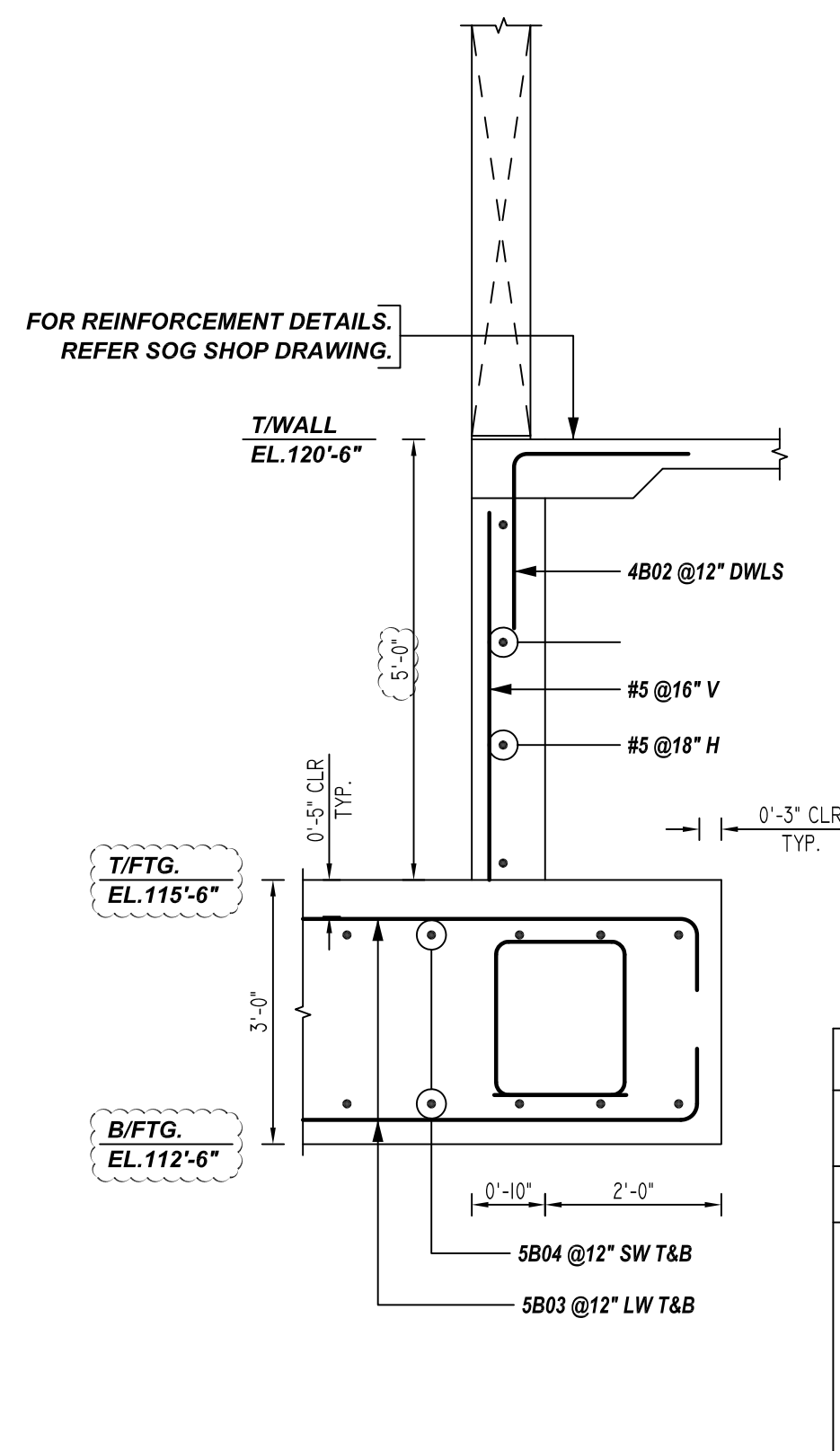
3 SECTION
REF: F/S3.32
SCALE: 1/2" = 1'-0"



B ELEVATION
REF: F/S3.32
SCALE: 1/2" = 1'-0"



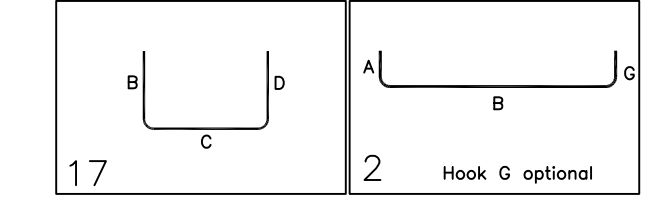
D ELEVATION
REF: F/S3.32
SCALE: 1/2" = 1'-0"



4 SECTION
REF: F/S3.32
SCALE: 1/2" = 1'-0"

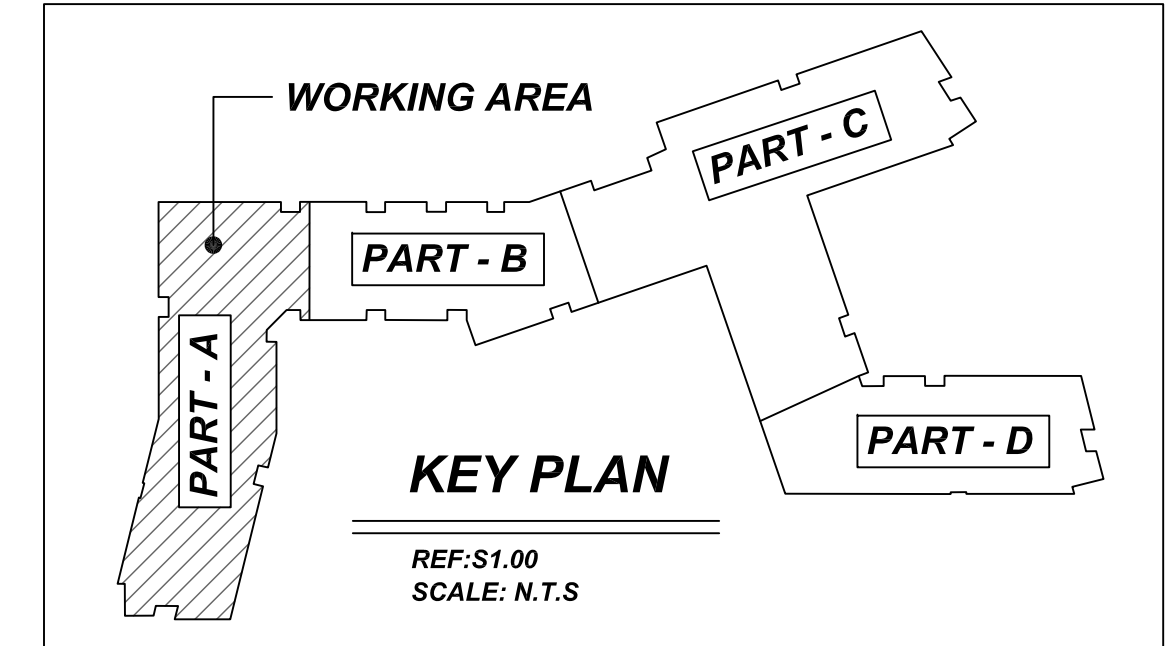
Release Number: R07

Bar	Qty	Size	Total Length	Type	X	Y	Z	W	V	U	T	S	R	Q	P	O	N	M	L	K	J	I	H	G	F	E	D	C	B	A
4B02	5	#4	4'-0"	17																										
5B01	3	#5	6'-3"	2	0'-10"	5'-5"																								
5B02	18	#5	6'-3"	17																										
6B01	4	#6	8'-0"	17																										
6B02	2	#6	5'-11"	17																										
6B03	2	#6	9'-0"	17																										



REBAR GRADE 60 ASTM A-615

SPLICES USED		ABBREVIATIONS		BAR MARK SIZE EQUIVALENT	
CLASS B 4,000 psi UNO				Imperial	Soft Metric
TOP BARS	OTHER BARS	ADD.	= Additional	#3	#10
#3	#3	B.O.W.	= Bottom of wall	#4	#13
#4	#4	C.B.	= Corner Bars	#5	#16
#5	#5	DIAG.	= Diagonal	#6	#19
#6	#6	D.O.	= Door Opening	#7	#22
#7	#7	DWLS.	= Dowels	#8	#25
#8	#8	E.F.	= Each Face	#9	#29
#9	#9	E.S.	= Each Side	#10	#32
#10	#10	E.W.	= Each Way	#11	#36
#11	#11	FTG.	= Footing		
#14	#14	F.F.	= Far Face		
		HORIZ.	= Horizontal		
		I.F.	= Inside Face		
		INTERS.	= Intersection		
		L.W.	= Long Way		
		N.F.	= Near Face		
		O.F.	= Outside Face		
		S.W.	= Short Way		
		T&B	= Top & Bottom		
		T.O.W.	= Top of Wall		
		Trans.	= Transverse		
		VERT.	= Vertical		



**SAUGUS RIDGE
PART - A MAT FOOTING & ELEVATOR PIT REINFORCEMENT DETAILS
MASSACHUSETTS 02184**

CUSTOMER: CALLAHAN
DESIGNER: -

REV NO	DATE	SENT FOR	REV NO	DATE	SENT FOR	DRAWN BY	DATE	JOB NO	SHEET NO.
0	03.14.22	APPROVAL				JP/MET	03.14.22	M92270187P	R07