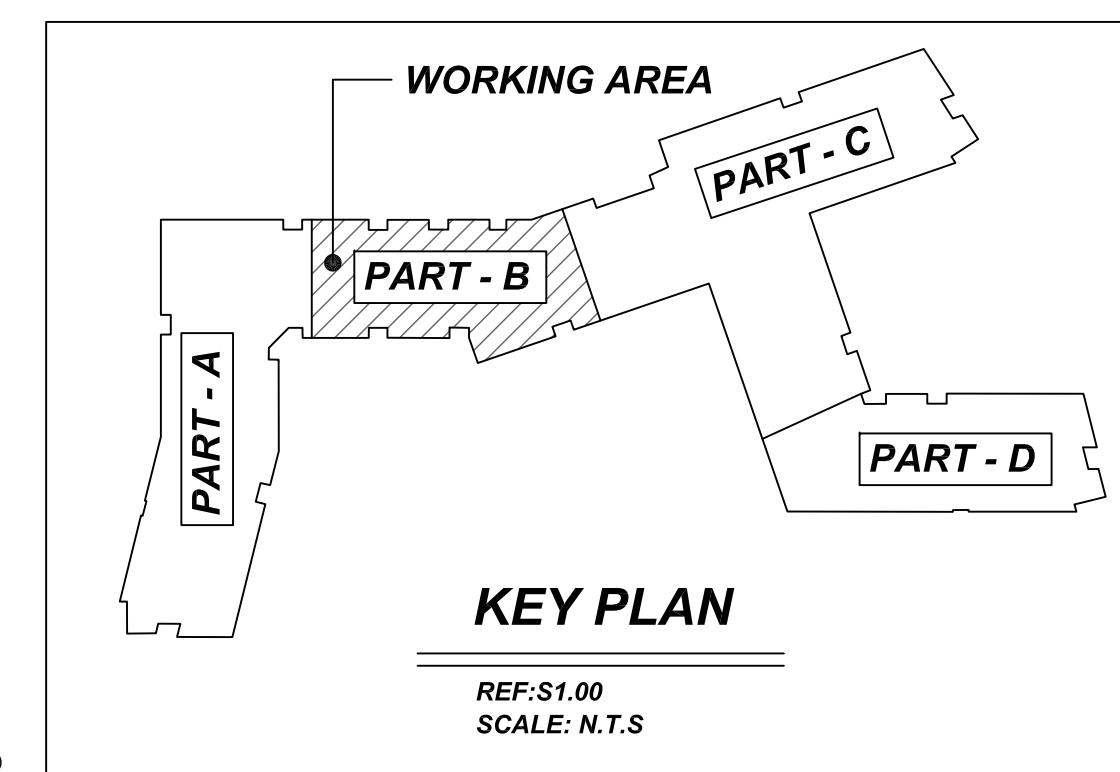


NOTICE

SHORTAGES, IMPROPER FABRICATION OR CLAIMS FOR ANY OTHER REASON MUST BE REPORTED TO THIS COMPANY WITHIN 10 DAYS FROM ORIGINAL DELIVERY. THIS COMPANY ALSO RESERVES THE RIGHT TO FIELD INSPECT MATERIALS PRIOR TO REPLACEMENT OR RECONDITIONING OF MATERIALS AND WILL NOT BE LIABLE FOR CHARGES FROM WORK DONE IN THE FIELD WITHOUT PRIOR AUTHORIZATION FROM THIS COMPANY.

REINFORCING STEEL PLACING DRAWING ONLY. USE IN CONJUNCTION WITH CONTRACT DRAWINGS & SPECIFICATIONS. ELEVATIONS & DIMENSIONS SHOWN ON DRAWING ARE FOR DETAILING PURPOSES ONLY AND SHOULD NOT BE USED FOR CONSTRUCTION UNLESS VERIFIED BY ENGINEER OR CONTRACTOR.

**ALL BARS IN THIS DRAWING
ASTM A615 GRADE 60
BLACK UNCOATED**



NOTES

- TYPICAL CLEARANCES ARE AS FOLLOWS:
FOLLOW MINIMUM COVER IN ACCORDANCE WITH
MAT FOOTING CONC. WALL
BOT = 3" TOP = 2"
SIDE = 3" SIDE = 2"
TOP = 5"
- ALL DIMENSIONS ARE FEET AND INCHES U.N.O
- GC PLEASE VERIFY THE CLOUDED ITEMS

A/E PLEASE VERIFY COVER DETAILS

**LAP SCHEDULE
@ FOUNDATION**

3500 PSI (CLASS-B) CASE - 1
Per ACI :318 (12.2.2)

BAR#	LENGTHS	
	TOP	OTHERS
#3	26"	21"
#4	36"	28"
#5	43"	34"
#6	52"	41"
#7	76"	59"
#8	86"	67"
#9	98"	76"
#10	110"	85"
#11	121"	94"

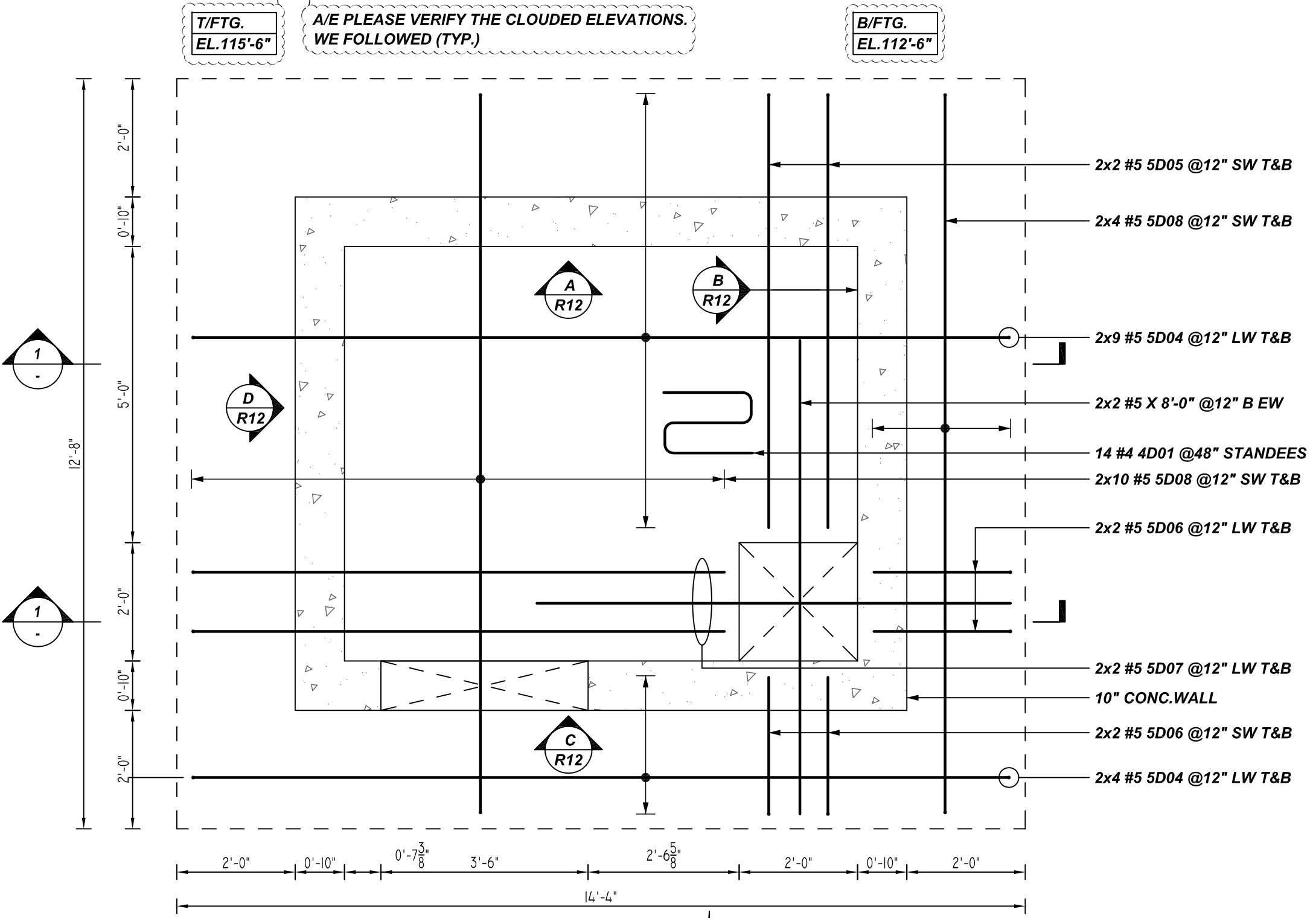
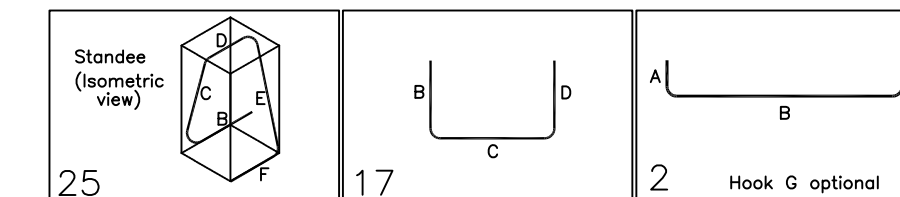
**LAP SCHEDULE
@ CONC. WALL**

4000 PSI (CLASS-B) CASE - 1
Per ACI :318 (12.2.2)

BAR#	LENGTHS	
	TOP	OTHERS
#3	2'-0"	1'-7"
#4	2'-8"	2'-1"
#5	3'-4"	2'-7"
#6	4'-0"	3'-1"
#7	5'-10"	4'-6"
#8	6'-8"	5'-2"
#9	7'-7"	5'-10"
#10	8'-6"	6'-7"
#11	9'-5"	7'-3"

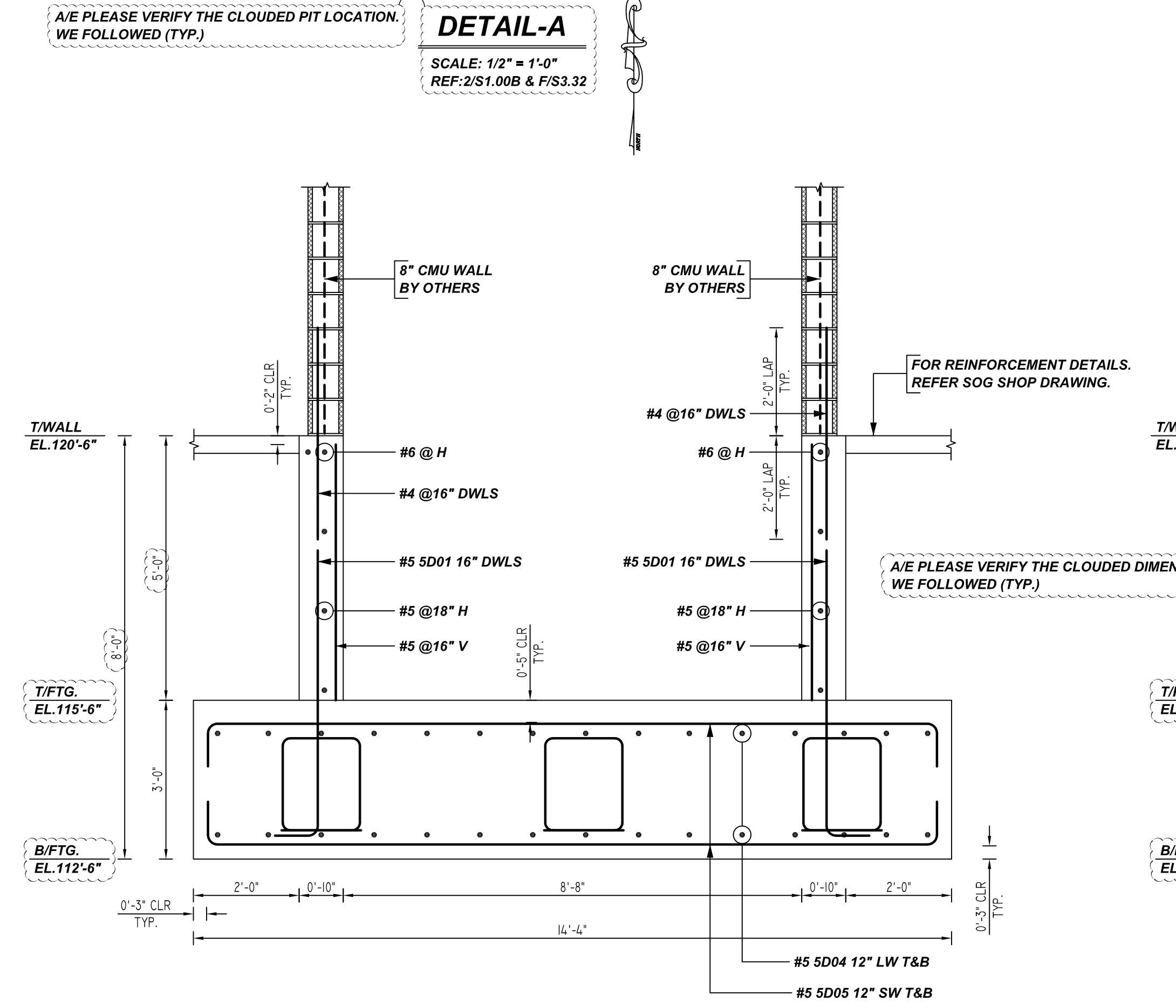
Release Number: R11

Bar Mark	Qty	Size	Total Length	Type	X	Y	Z	W	V	U	T	S	R	Q	P	O	N	M	L	K	J	I	H	G	F	E	D	C	B	A	
4001	14	#4	8'-10 1/2"	25																											
5002	4	#5	5'-4"	17																											
5004	26	#5	15'-4"	2																											
5005	4	#5	8'-2"	2																											
5006	8	#5	3'-2"	2																											
5007	4	#5	9'-10"	2																											
5008	26	#5	15'-10"	2																											



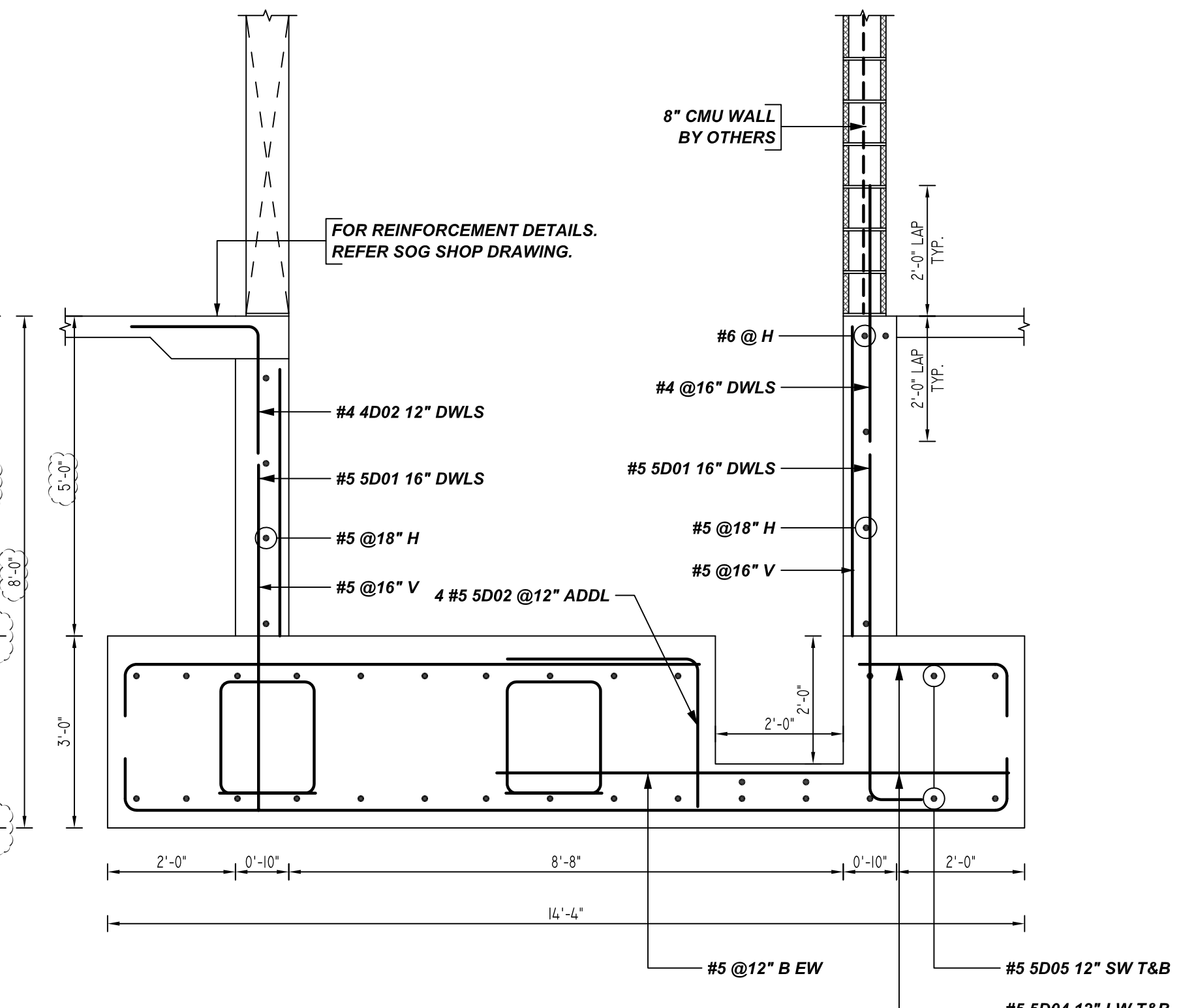
DETAIL-A

SCALE: 1/2" = 1'-0"
REF: S1.00B & F/S3.32



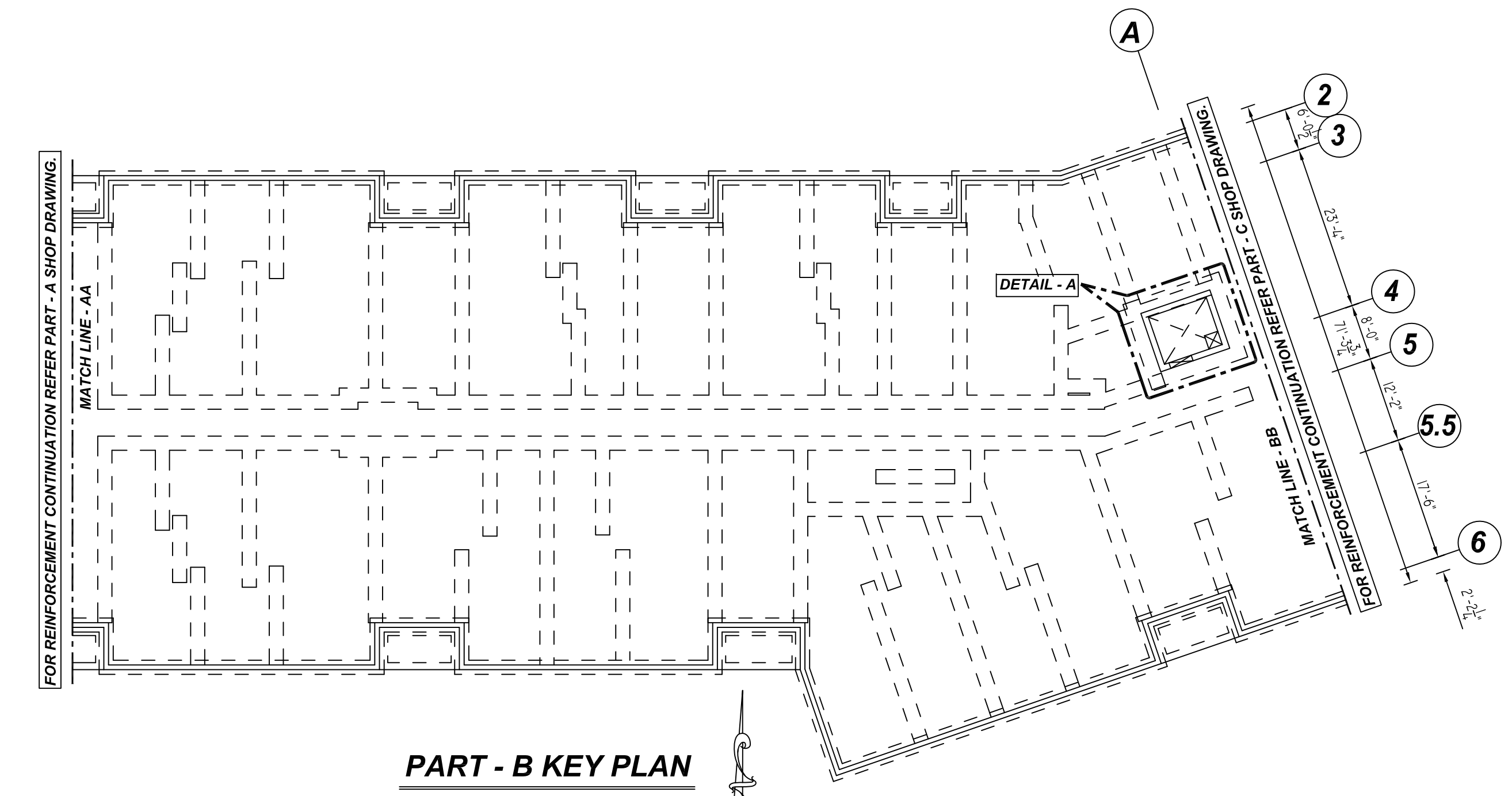
1 SECTION

REF: F/S3.32
SCALE: 1/2" = 1'-0"



2 SECTION

REF: F/S3.32
SCALE: 1/2" = 1'-0"



PART - B KEY PLAN

REF: 1&2/S1.00B
SCALE: 1/16" = 1'-0"

REBAR GRADE 60 ASTM A-615

SPLICES USED		ABBREVIATIONS		BAR MARK SIZE EQUIVALENT	
CLASS B 4,000 psi UNO				Imperial	Soft Metric
TOP BARS	OTHER BARS	ADD.	= Additional	#3	#10
#3	#3	B.O.W.	= Bottom of wall	#4	#13
#4	#4	C.B.	= Corner Bars	#5	#16
#5	#5	DIAG.	= Diagonal	#6	#19
#6	#6	D.O.	= Door Opening	#7	#22
#7	#7	DWLS.	= Dowels	#8	#25
#8	#8	E.F.	= Each Face	#9	#29
#9	#9	E.S.	= Each Side	#10	#32
#10	#10	E.W.	= Each Way	#11	#36
#11	#11	FTG.	= Footing		
#14	#14	F.F.	= Far Face		
		HORIZ.	= Horizontal		
		I.F.	= Inside Face		
		INTERS.	= Intersection		
		L.W.	= long Way		
		N.F.	= Near Face		
		O.F.	= Outside Face		
		S.W.	= Short Way		
		T&B	= Top & Bottom		
		T.O.W.	= Top of Wall		
		Trans.	= Transverse		
		VERT.	= Vertical		

**SAUGUS RIDGE
PART - B ELEVATOR PIT REINFORCEMENT DETAILS
MASSACHUSETTS 02184**

CUSTOMER: CALLAHAN
DESIGNER: -
DRAWN BY: DATE: JOB NO: SHEET NO.
JP/MET 03.16.22 M92270187P R11

REV NO	DATE	SENT FOR	REV NO	DATE	SENT FOR
0	03.16.22	APPROVAL			

NOTICE

SHORTAGES, IMPROPER FABRICATION OR CLAIMS FOR ANY OTHER REASON MUST BE REPORTED TO THIS COMPANY WITHIN 10 DAYS FROM ORIGINAL DELIVERY. THIS COMPANY ALSO RESERVES THE RIGHT TO FIELD INSPECT MATERIALS PRIOR TO REPLACEMENT OR RECONDITIONING OF MATERIALS AND WILL NOT BE LIABLE FOR CHARGES FROM WORK DONE IN THE FIELD WITHOUT PRIOR AUTHORIZATION FROM THIS COMPANY.

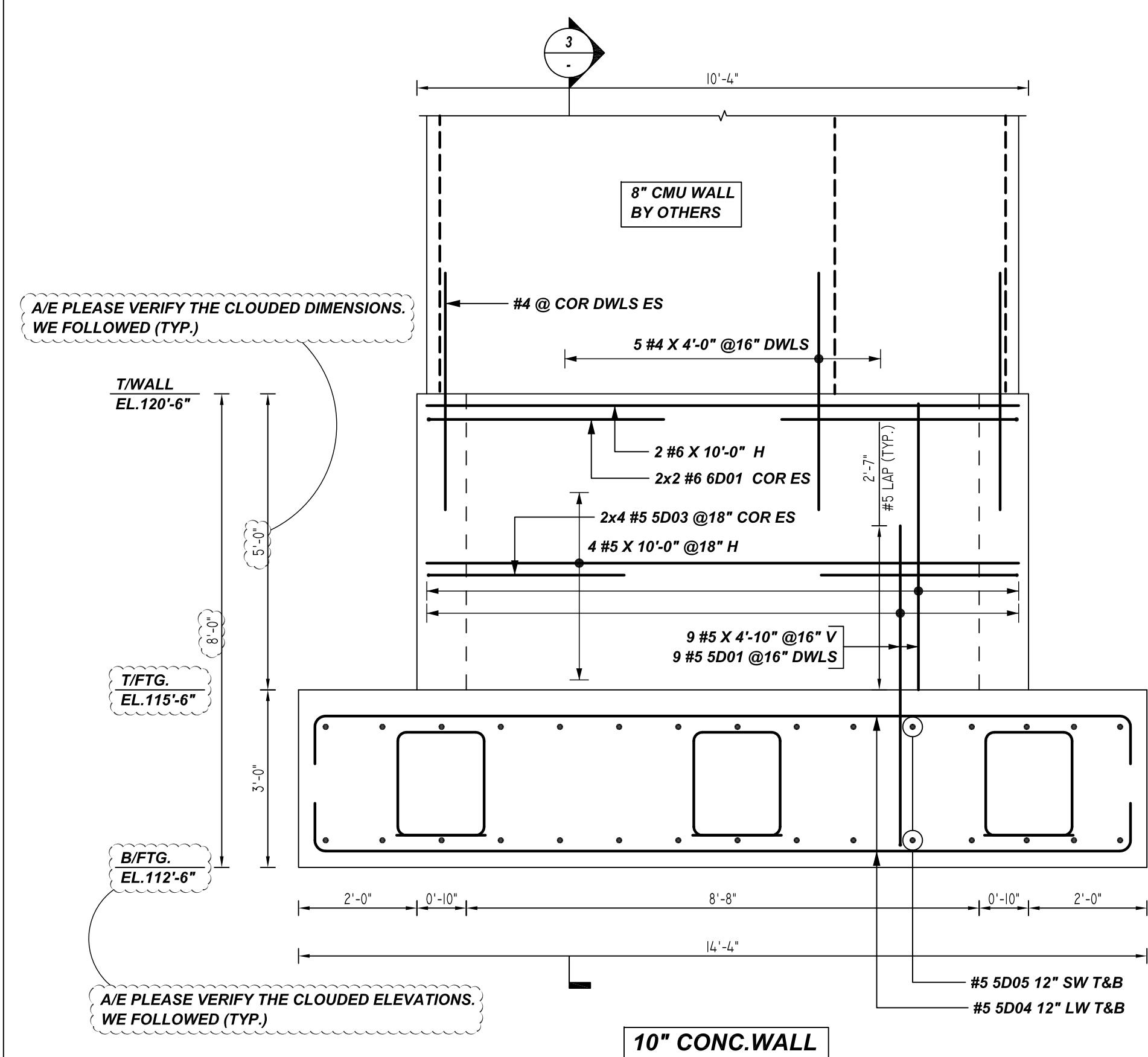
REINFORCING STEEL PLACING DRAWING ONLY. USE IN CONJUNCTION WITH CONTRACT DRAWINGS & SPECIFICATIONS. ELEVATIONS & DIMENSIONS SHOWN ON DRAWING ARE FOR DETAILING PURPOSES ONLY AND SHOULD NOT BE USED FOR CONSTRUCTION UNLESS VERIFIED BY ENGINEER OR CONTRACTOR.

**ALL BARS IN THIS DRAWING
ASTM A615 GRADE 60
BLACK UNCOATED**

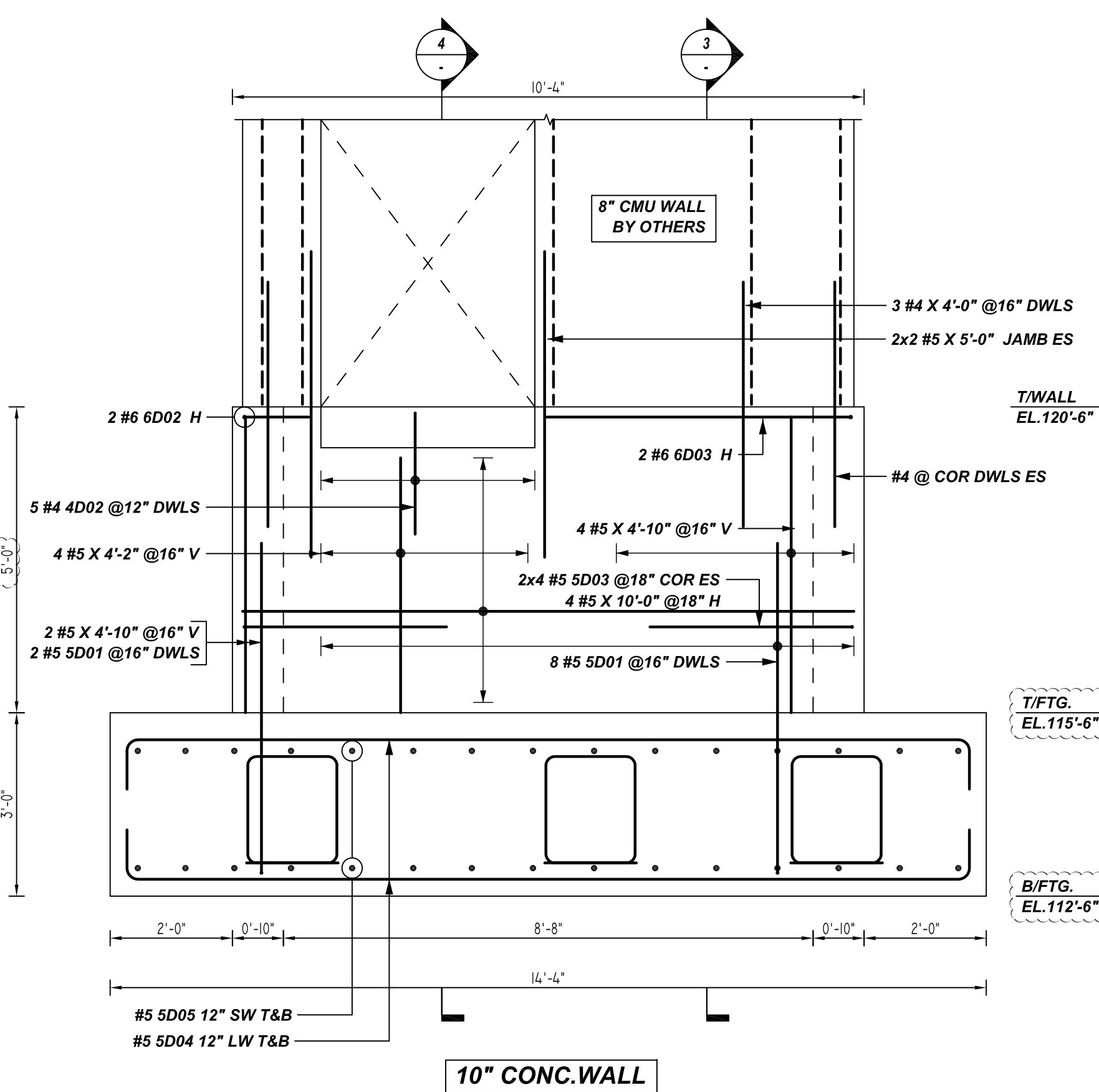
NOTES

- TYPICAL CLEARANCES ARE AS FOLLOWS:
FOLLOW MINIMUM COVER IN ACCORDANCE WITH
MAT FOOTING CONC. WALL
BOT = 3" TOP = 2"
SIDE = 3" SIDE = 2"
TOP = 5"
- ALL DIMENSIONS ARE FEET AND INCHES U.N.O
- GC PLEASE VERIFY THE CLOUDED ITEMS

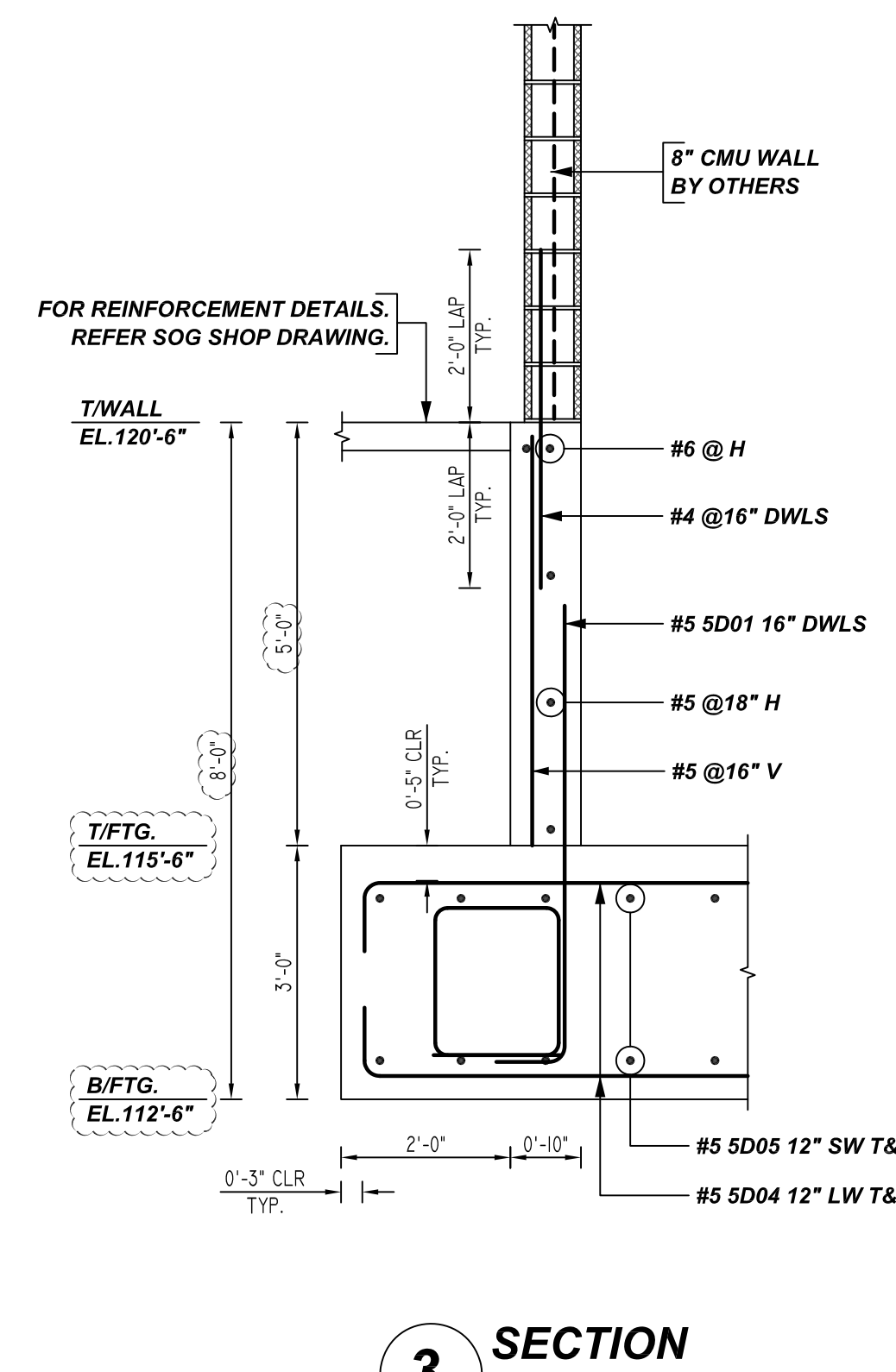
A/E PLEASE VERIFY COVER DETAILS



A ELEVATION
REF: F/S3.32
SCALE: 1/2" = 1'-0"



C ELEVATION
REF: F/S3.32
SCALE: 1/2" = 1'-0"



3 SECTION
REF: F/S3.32
SCALE: 1/2" = 1'-0"

LAP SCHEDULE @ FOUNDATION

3500 PSI (CLASS-B) CASE - 1
Per ACI: 318 (12.2.2)

BAR#	LENGTHS	
	TOP	OTHERS
#3	26"	21"
#4	36"	28"
#5	43"	34"
#6	52"	41"
#7	76"	59"
#8	86"	67"
#9	98"	76"
#10	110"	85"
#11	121"	94"

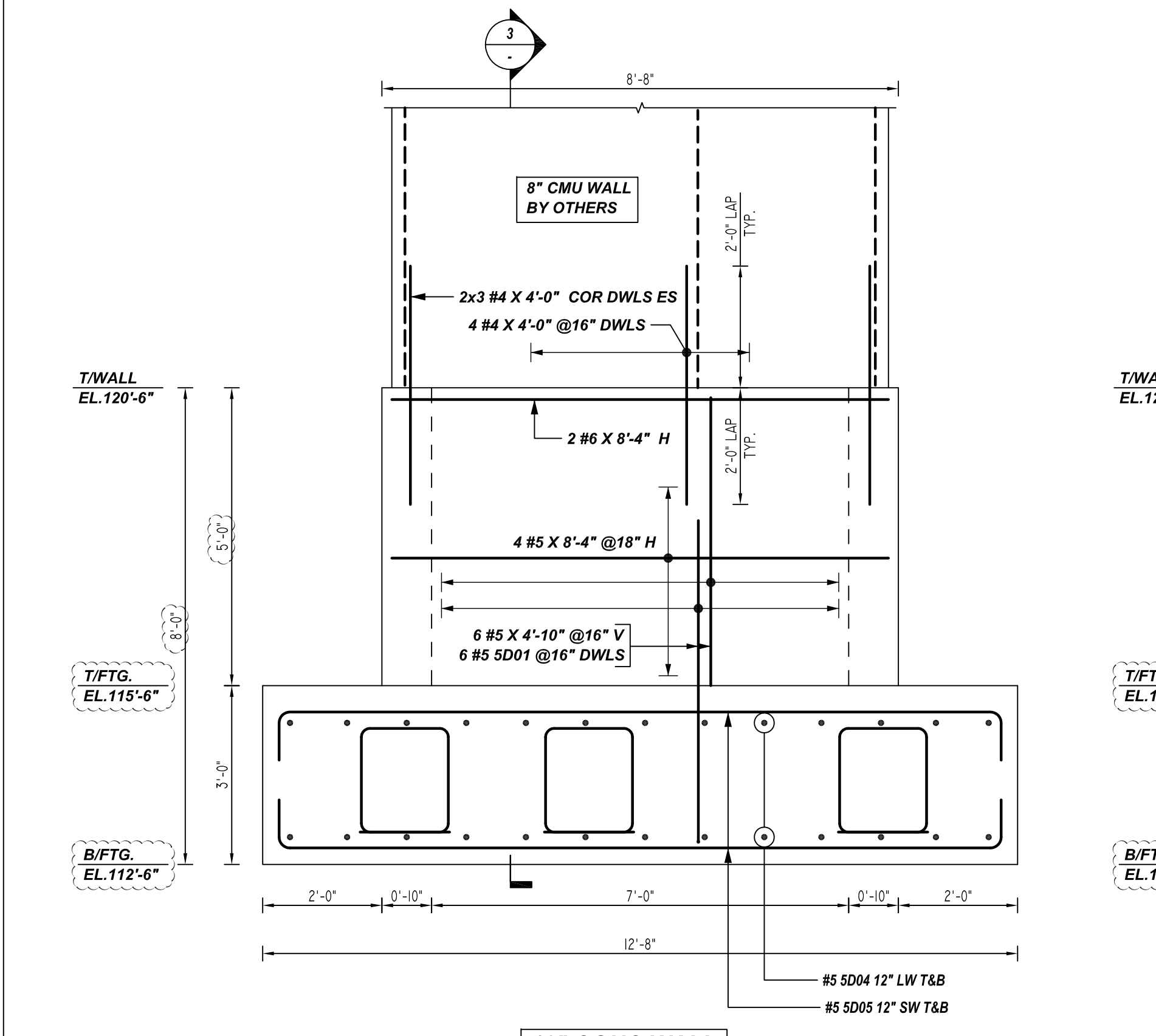
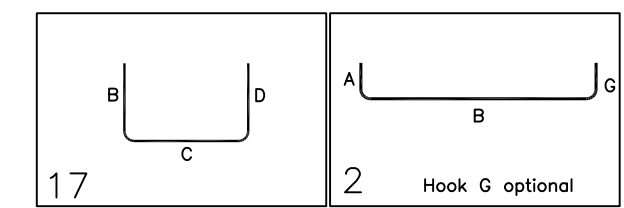
LAP SCHEDULE @ CONC. WALL

4000 PSI (CLASS-B) CASE - 1
Per ACI: 318 (12.2.2)

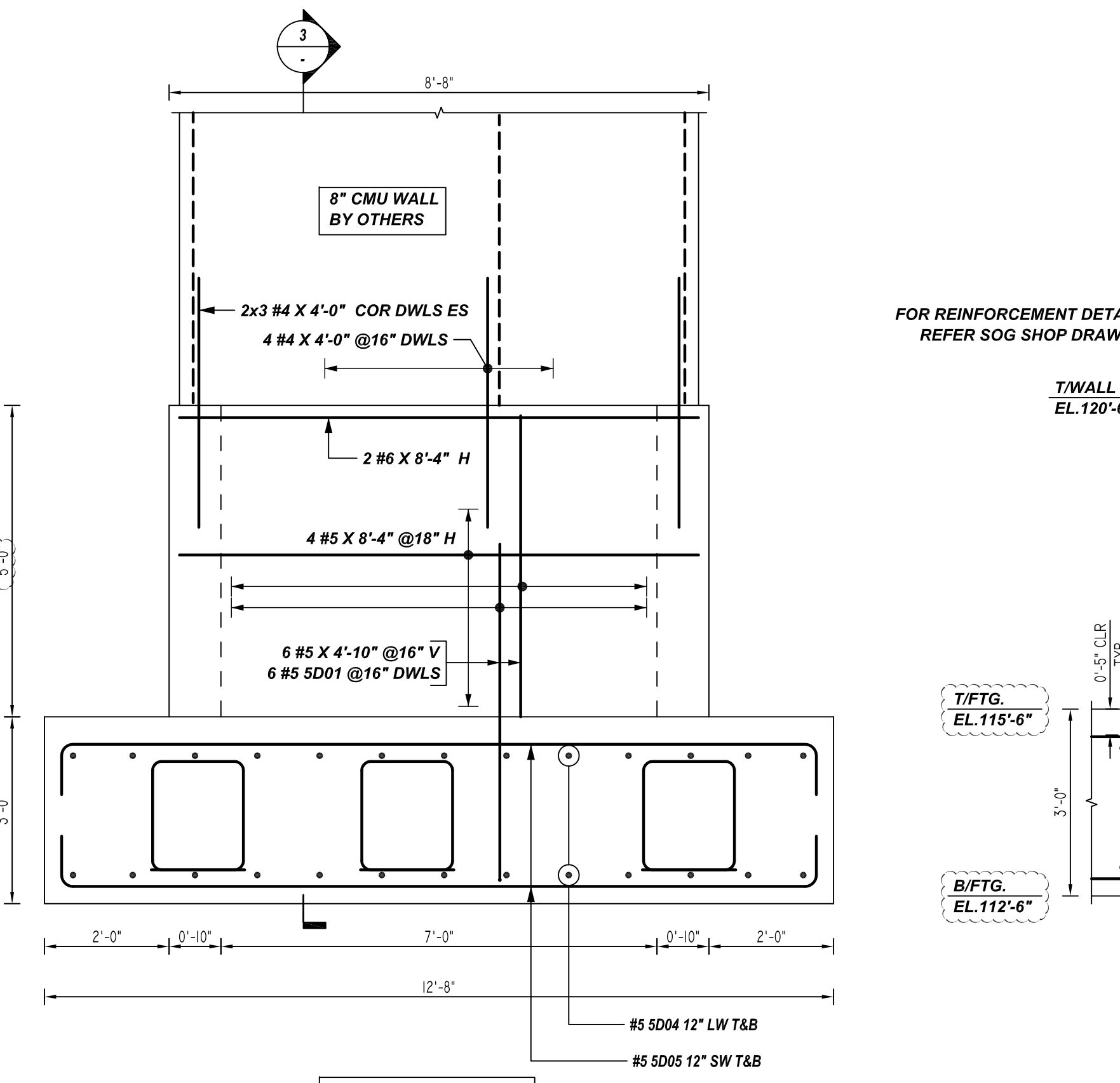
BAR#	LENGTHS	
	TOP	OTHERS
#3	2'-0"	1'-7"
#4	2'-8"	2'-1"
#5	3'-4"	2'-7"
#6	4'-0"	3'-1"
#7	5'-10"	4'-6"
#8	6'-8"	5'-2"
#9	7'-7"	5'-10"
#10	8'-6"	6'-7"
#11	9'-5"	7'-3"

Release Number: R12

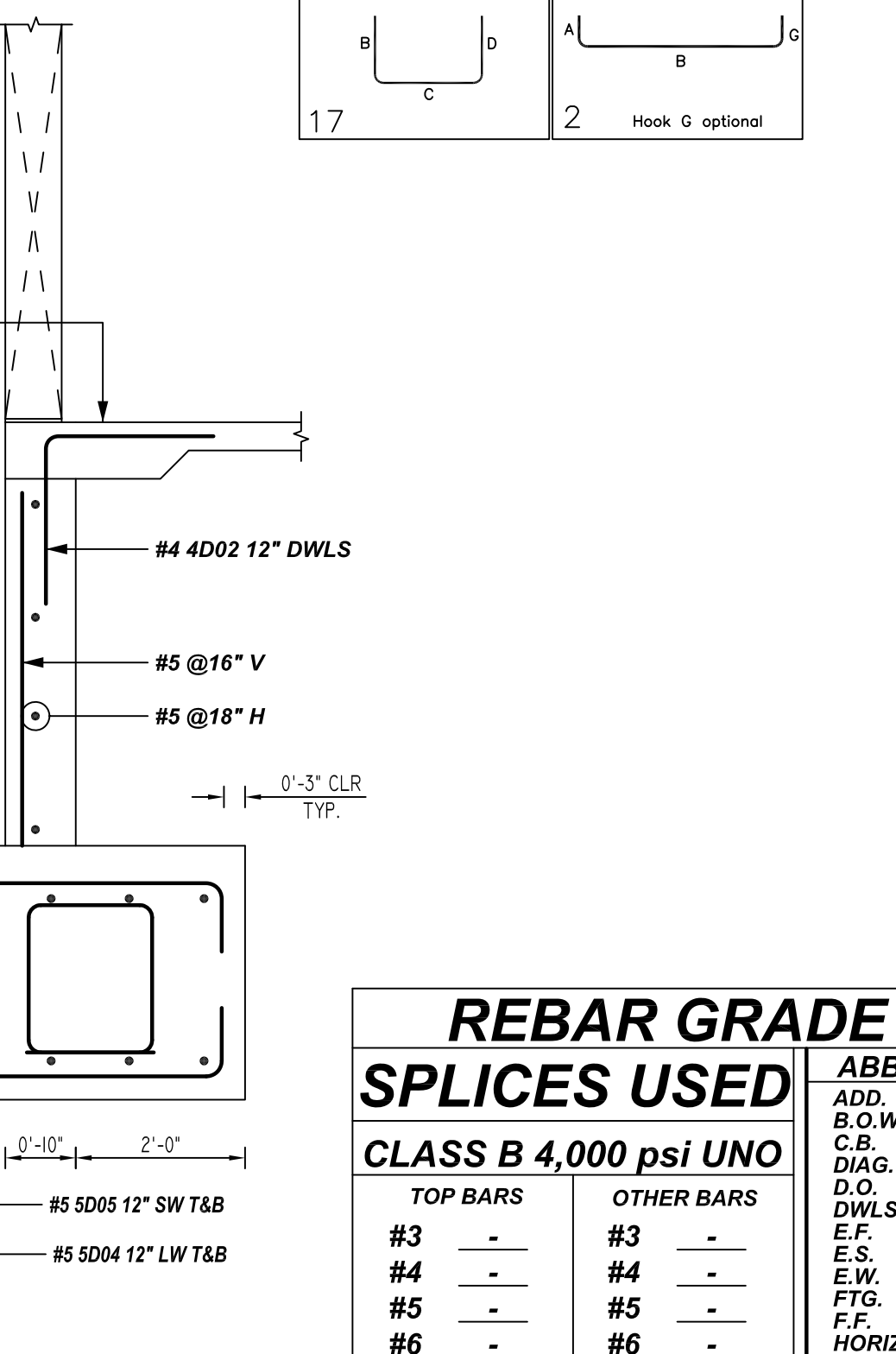
Bar Mark	Qty	Size	Total Length	Type	X	Y	Z	W	V	U	T	S	R	Q	P	O	N	M	L	K	J	I	H	G	F	E	D	C	B	A
4002	5	#4	4'-0"	17																										
5001	31	#5	6'-3"	2	0'-10"	5'-5"																								
5003	16	#5	6'-8"	17																										
6001	4	#6	8'-0"	17																										
6002	2	#6	5'-11"	17																										
6003	2	#6	9'-0"	17																										



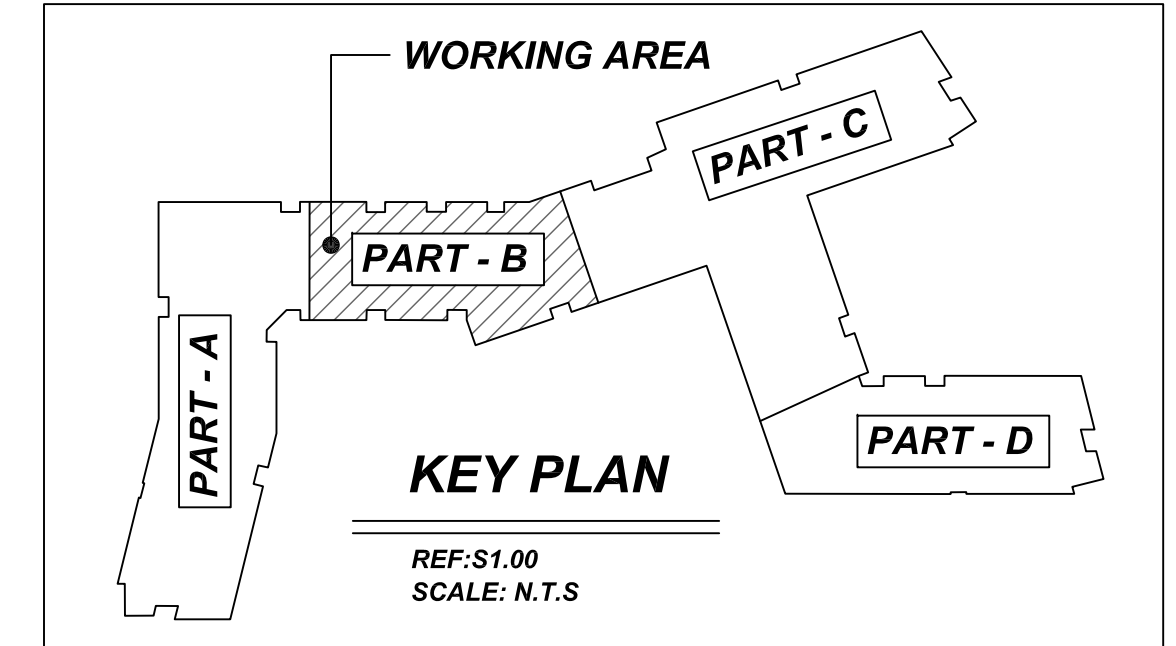
B ELEVATION
REF: F/S3.32
SCALE: 1/2" = 1'-0"



D ELEVATION
REF: F/S3.32
SCALE: 1/2" = 1'-0"



4 SECTION
REF: F/S3.32
SCALE: 1/2" = 1'-0"



REBAR GRADE 60 ASTM A-615

SPLICES USED
CLASS B 4,000 psi UNO

TOP BARS	OTHER BARS
#3 -	#3 -
#4 -	#4 -
#5 -	#5 -
#6 -	#6 -
#7 -	#7 -
#8 -	#8 -
#9 -	#9 -
#10 -	#10 -
#11 -	#11 -
#14 -	#14 -

ABBREVIATIONS		BAR MARK SIZE EQUIVALENT	
ADD.	= Additional	Imperial	Soft Metric
B.O.W.	= Bottom of wall	#3	#10
C.B.	= Corner Bars	#4	#13
DIAG.	= Diagonal	#5	#16
D.O.	= Door Opening	#6	#19
D.W.S.	= Dowels	#7	#22
E.F.	= Each Face	#8	#25
E.S.	= Each Side	#9	#29
E.W.	= Each Way	#10	#32
FTG.	= Footing	#11	#36
F.F.	= Far Face		
HORIZ.	= Horizontal		
I.F.	= Inside Face		
INTERS.	= Intersection		
L.W.	= Long Way		
N.F.	= Near Face		
O.F.	= Outside Face		
S.W.	= Short Way		
T&B	= Top & Bottom		
T.O.W.	= Top of Wall		
Trans.	= Transverse		
VERT.	= Vertical		

SAUGUS RIDGE
PART - B ELEVATOR PIT REINFORCEMENT DETAILS
MASSACHUSETTS 02184

CUSTOMER: CALLAHAN
DESIGNER: -

REV NO	DATE	APPROVAL	SENT FOR	REV NO	DATE	SENT FOR
0	03.16.22					

DRAWN BY	DATE	JOB NO	SHEET NO.
JP/MET	03.16.22	M92270187P	R12