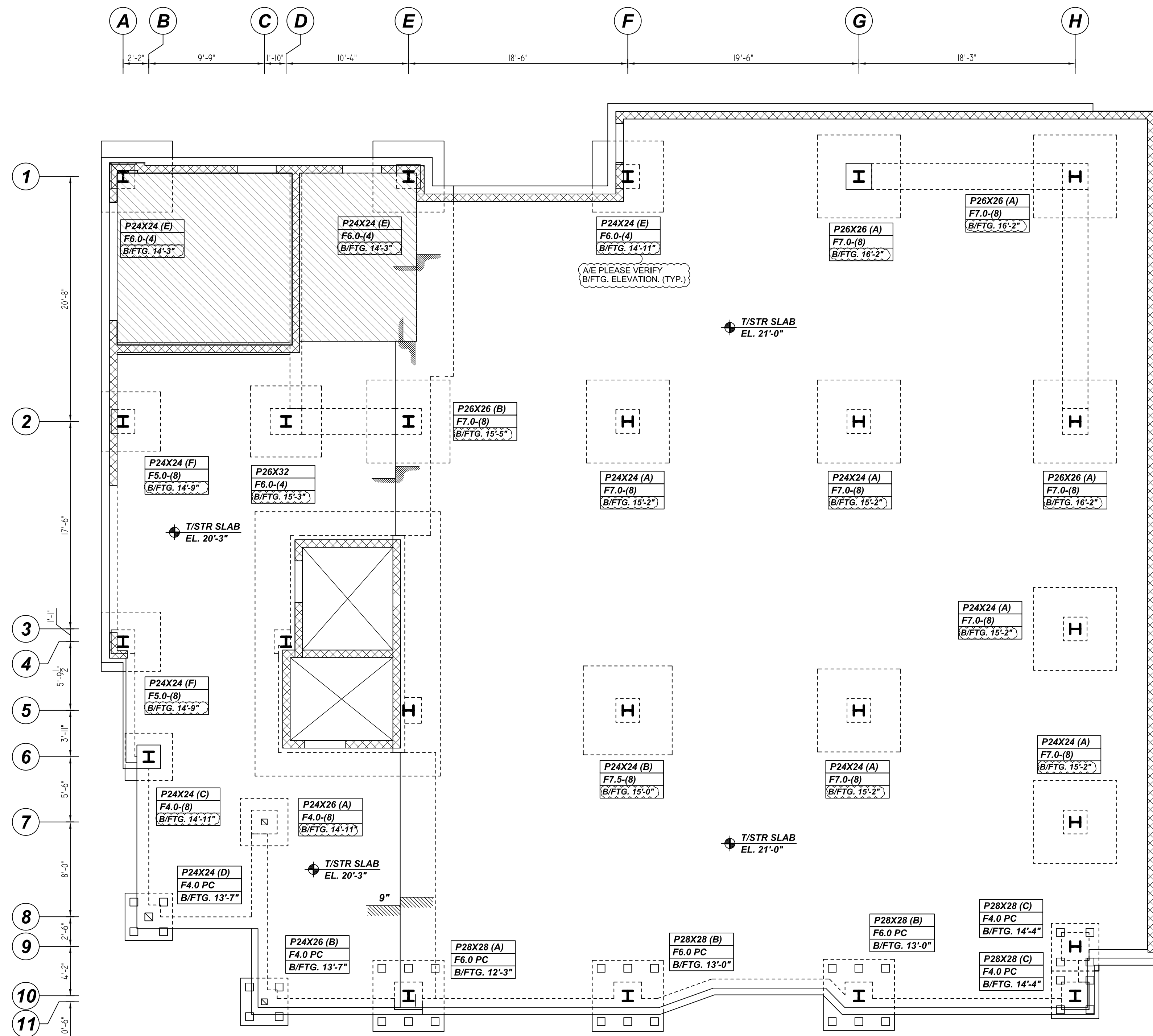
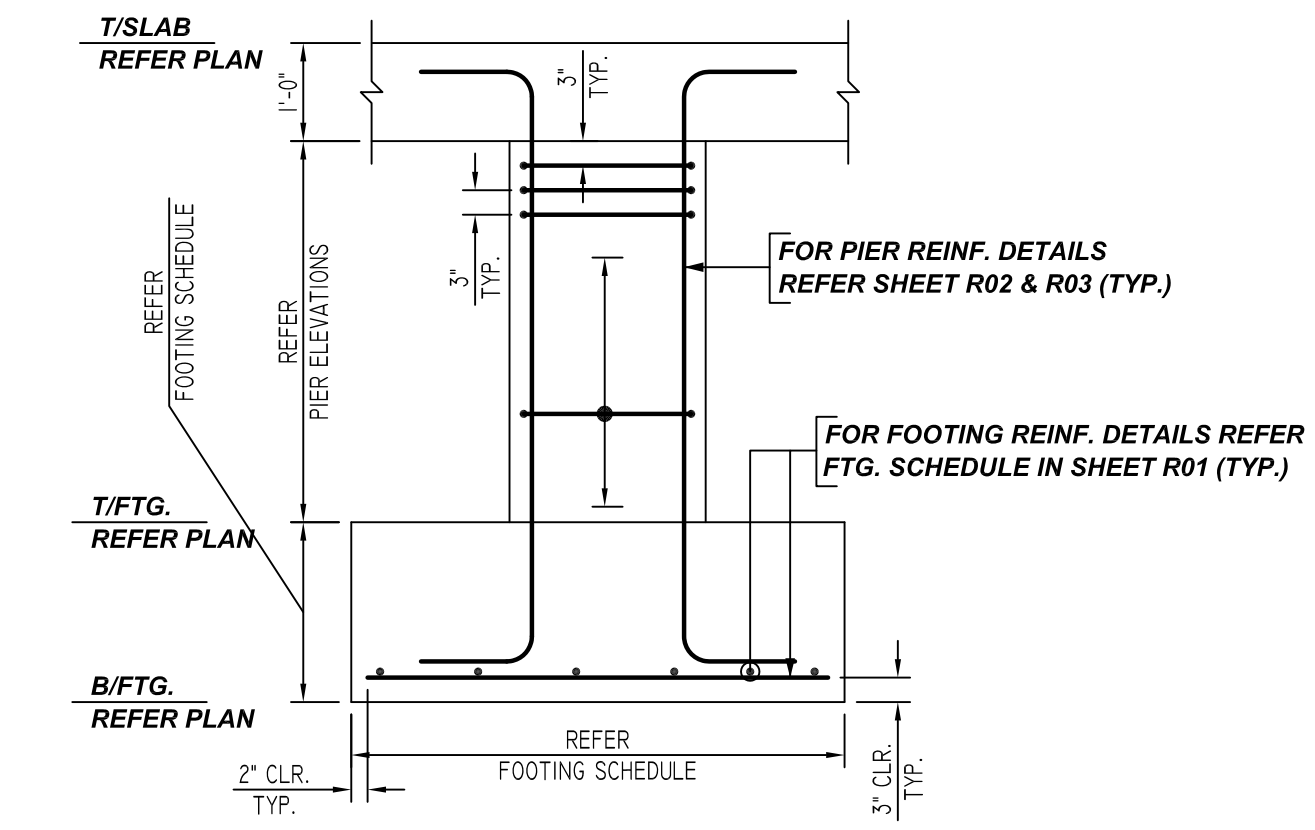


NOTICE
 SHORTAGES, IMPROPER FABRICATION OR CLAIMS FOR ANY OTHER REASON MUST BE REPORTED TO THIS COMPANY WITHIN 10 DAYS FROM ORIGINAL DELIVERY. THIS COMPANY ALSO RESERVES THE RIGHT TO FIELD INSPECT MATERIALS PRIOR TO REPLACEMENT OR RECONDITIONING OF MATERIALS AND WILL NOT BE LIABLE FOR CHARGES FROM WORK DONE IN THE FIELD WITHOUT PRIOR AUTHORIZATION FROM THIS COMPANY.

REINFORCING STEEL PLACING DRAWING ONLY. USE IN CONJUNCTION WITH CONTRACT DRAWINGS & SPECIFICATIONS. ELEVATIONS & DIMENSIONS SHOWN ON DRAWING ARE FOR DETAILING PURPOSES ONLY AND SHOULD NOT BE USED FOR CONSTRUCTION UNLESS VERIFIED BY ENGINEER OR CONTRACTOR.



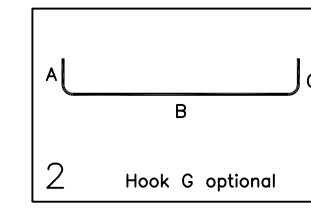
FOOTING SCHEDULE					
MARK	QTY	SIZE	GRID LOCATION	REINFORCING	REMARK
F4.0	2	4'-0" x 4'-0" x 1'-4"	B/6 & C/7	2x2x5 #5 X 3'-8" B EW	
F4.0 PC	4	4'-0" x 4'-0" x 2'-8"	B/8, C/11, H/9 & H/10	4x2x5 #5 5A01 B EW	
F5.0	2	5'-0" x 5'-0" x 1'-6"	A/2 & A/4	2x2x5 #6 X 4'-8" B EW	
F6.0	4	6'-0" x 6'-0" x 2'-0"	A/1, E/1, F/1 & D/2	4x2x7 #6 X 5'-8" B EW	
F6.0 PC	3	6'-0" x 6'-0" x 4'-0"	E/10, F/10 & G/10	3x2x7 #6 6A01 B EW	
F7.0	9	7'-0" x 7'-0" x 1'-10"	G/1, H/1, E/2, F/2, G/2, H/2, H/3, G/5 & H/7	9x2x9 #6 X 6'-8" B EW	
F7.5	1	7'-6" x 7'-6" x 2'-0"	F/5	2x10 #6 X 7'-2" B EW	



TYPICAL COLUMN PIER AND FOOTING DETAIL
 REF: S101 & S403 (DT.09/30/21)
 SCALE: 1/8" = 1'-0"

SPREAD FOOTING AND PIER LAYOUT
 REF: S101 (DT.09/30/21)
 SCALE: 1/6" = 1'-0"

Bar Mark	Qty	Size	Total Length	Type	X	Y	Z	W	V	U	T	S	R	Q	P	O	N	M	L	K	J	I	H	G	F	E	D	C	B	A
5401	40	#5	5'-4"	2	0'-10"	3'-6"																								
5401	63	#5	7'-8"	2	1'-0"	5'-6"																								



LOCATION	MIN. COVER
FOOTING BOTTOM	3" CLR
FOOTING SIDES	2" CLR

**ALL BARS IN THIS DRAWING
 ASTM A615 GRADE 60
 BLACK UNCOATED**

REBAR GRADE 60 ASTM A-615			
SPLICES USED			
CLASS B 4,000 psi UNO		ABBREVIATIONS	
TOP BARS	OTHER BARS	ADD. = Additional	BAR MARK SIZE EQUIVALENT
#3 15"	#3 12"	B.O.W. = Bottom of wall	Imperial Soft Metric
#4 20"	#4 15"	C.B. = Corner Bars	#3 #10
#5 25"	#5 19"	DIAG. = Diagonal	#4 #13
#6 29"	#6 23"	D.O. = Door Opening	#5 #16
#7 43"	#7 33"	DWLS. = Dowels	#6 #19
#8 49"	#8 37"	E.F. = Each Face	#7 #22
#9 55"	#9 42"	E.S. = Each Side	#8 #25
#10 62"	#10 47"	E.W. = Each Way	#9 #29
#11 68"	#11 53"	FTG. = Footing	#10 #32
#14 -	#14 -	F.F. = Far Face	#11 #36
		HORIZ. = Horizontal	
		I.F. = Inside Face	
		INTERS. = Intersection	
		L.W. = long Way	
		N.F. = Near Face	
		O.F. = Outside Face	
		S.W. = Short Way	
		T&B = Top & Bottom	
		T.O.W. = Top of Wall	
		Trans. = Transverse	
		VERT. = Vertical	

2-10 MAVERICK SQ
 SPREAD FOOTING AND PIER REINFORCEMENT DETAILS
EAST BOSTON, MA 02128
 CUSTOMER: ALARIS CONSTRUCTION
 DESIGNER: -

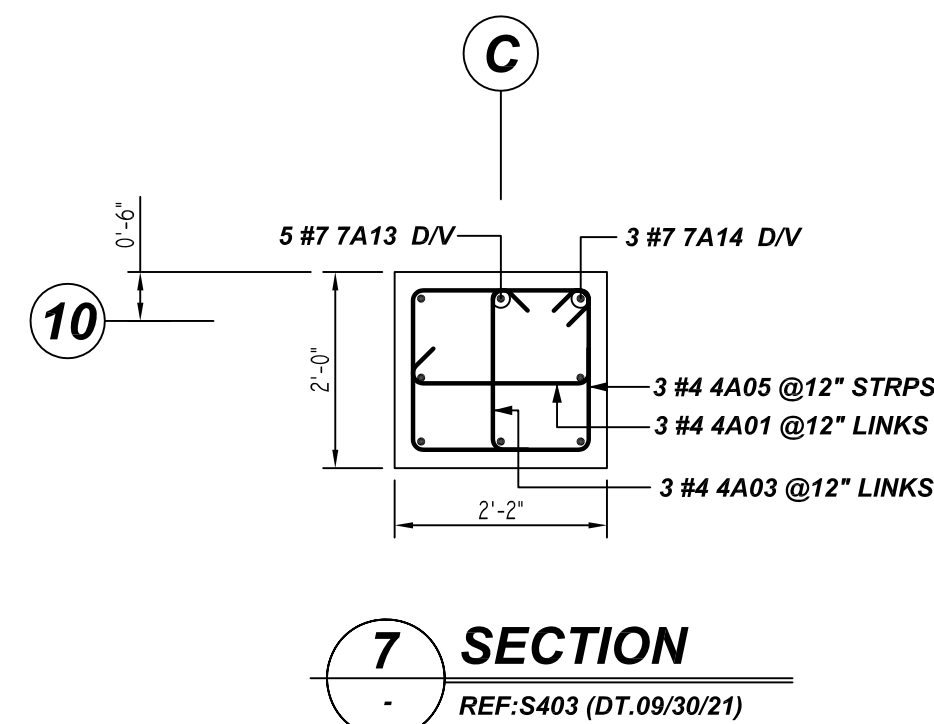
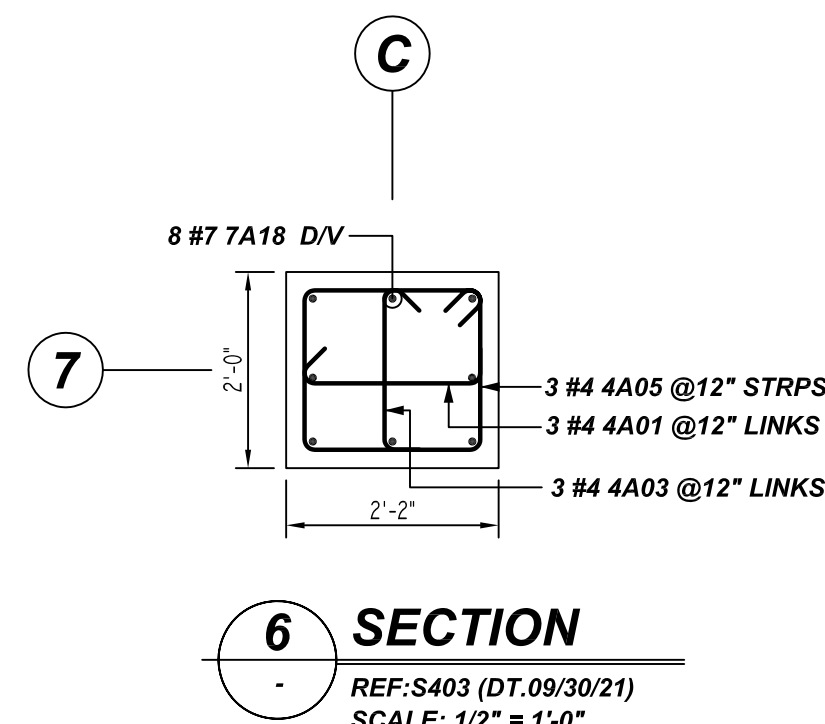
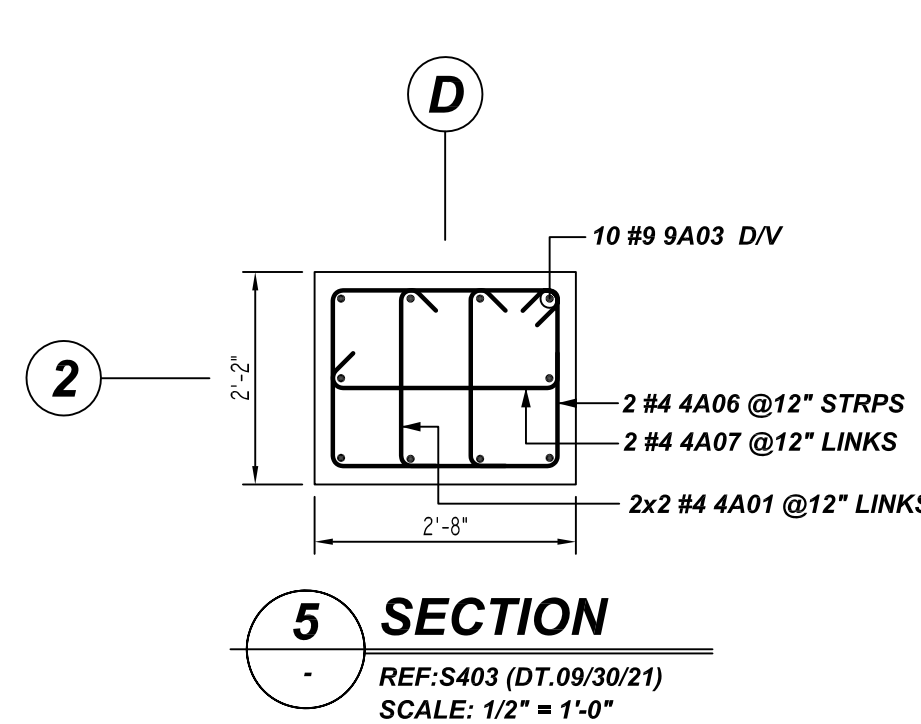
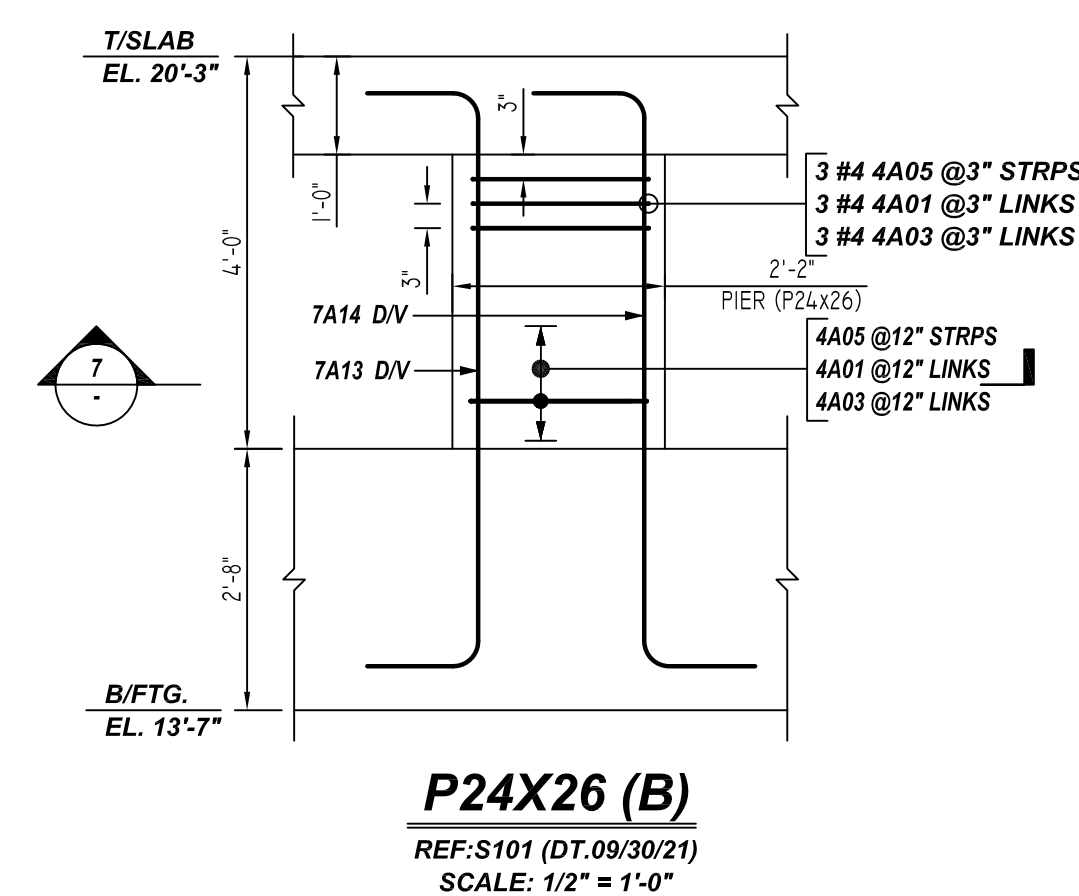
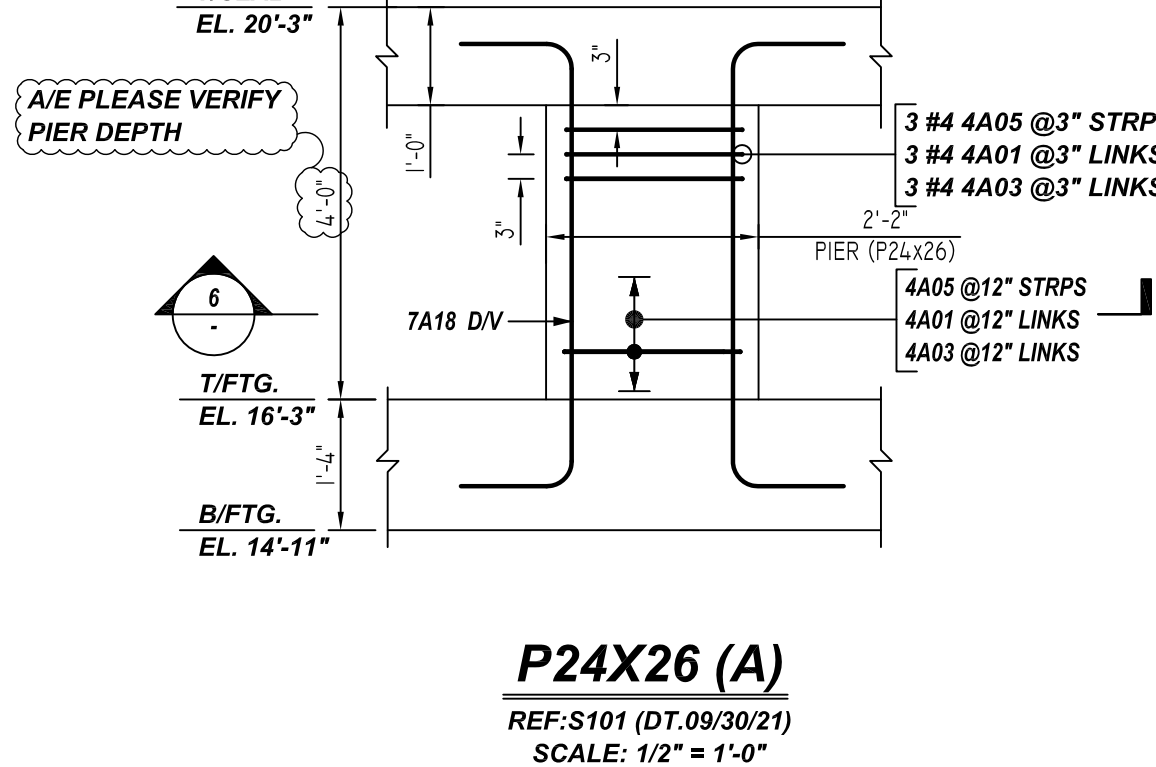
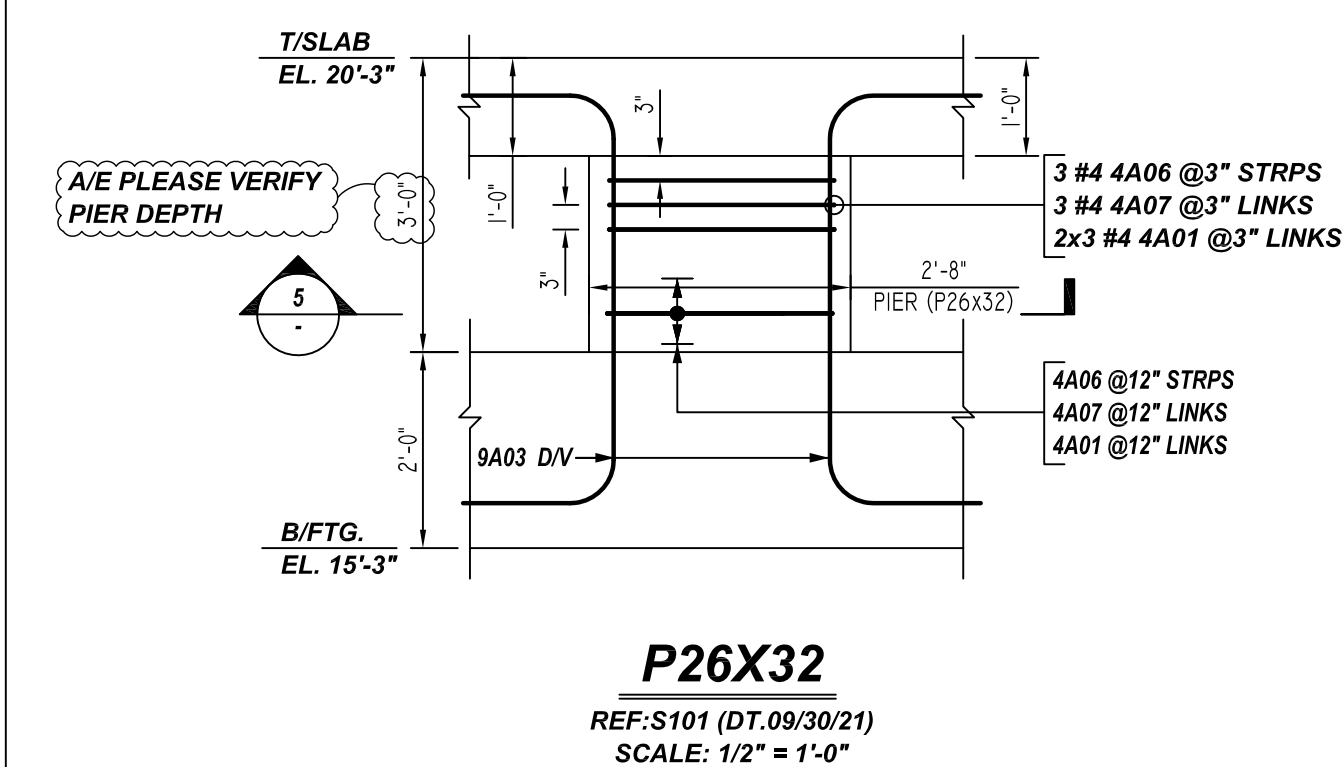
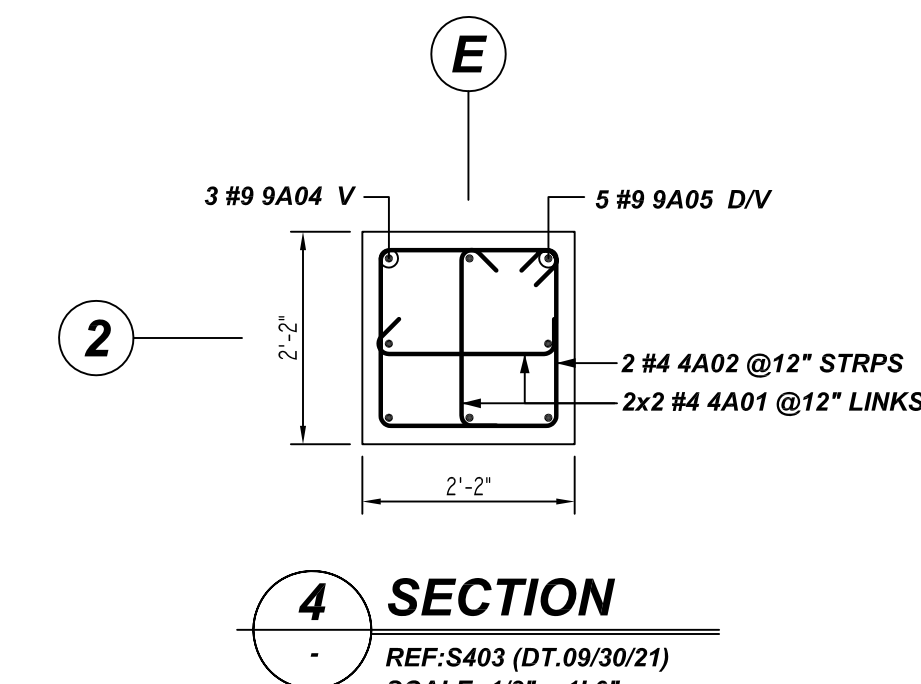
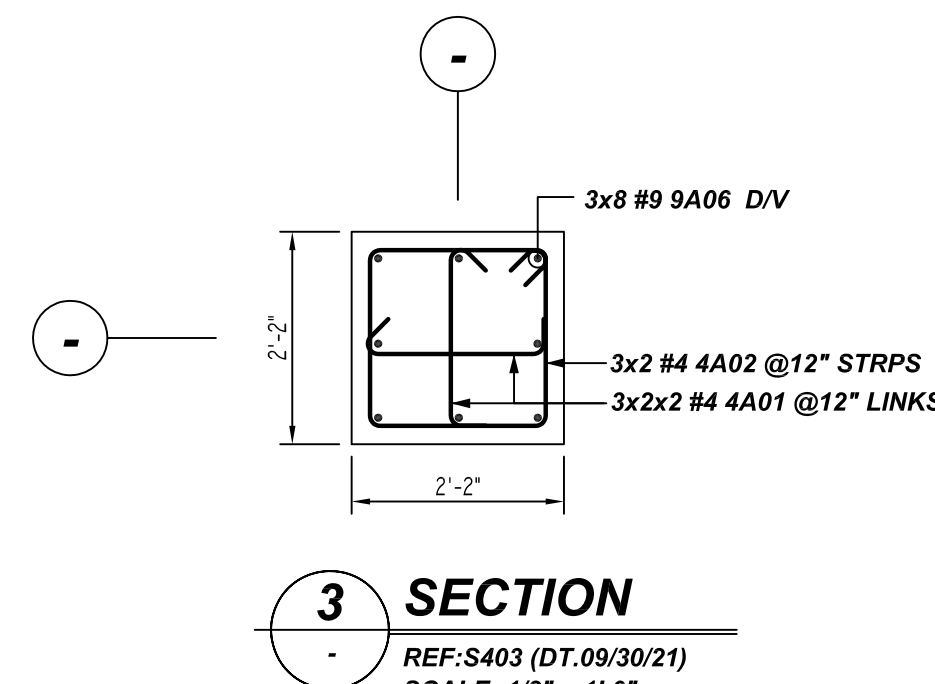
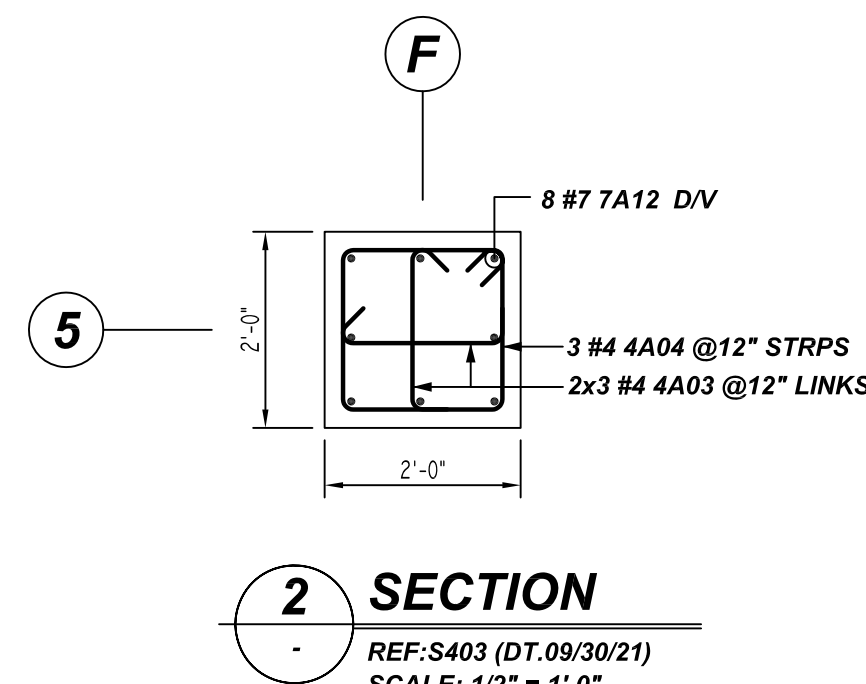
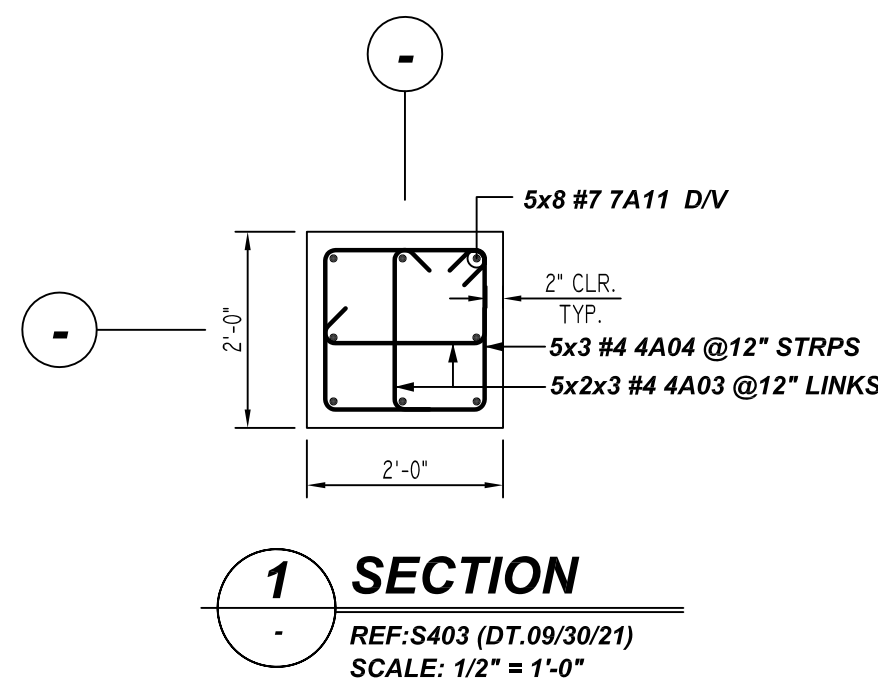
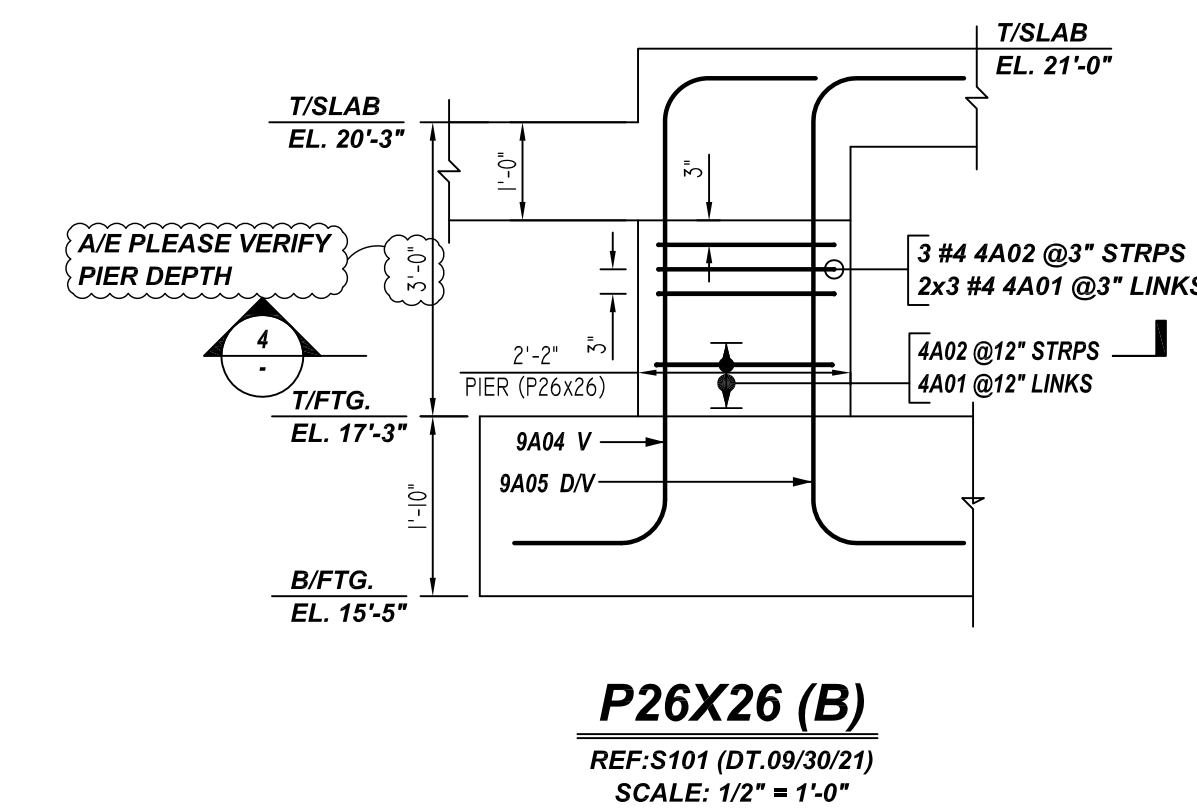
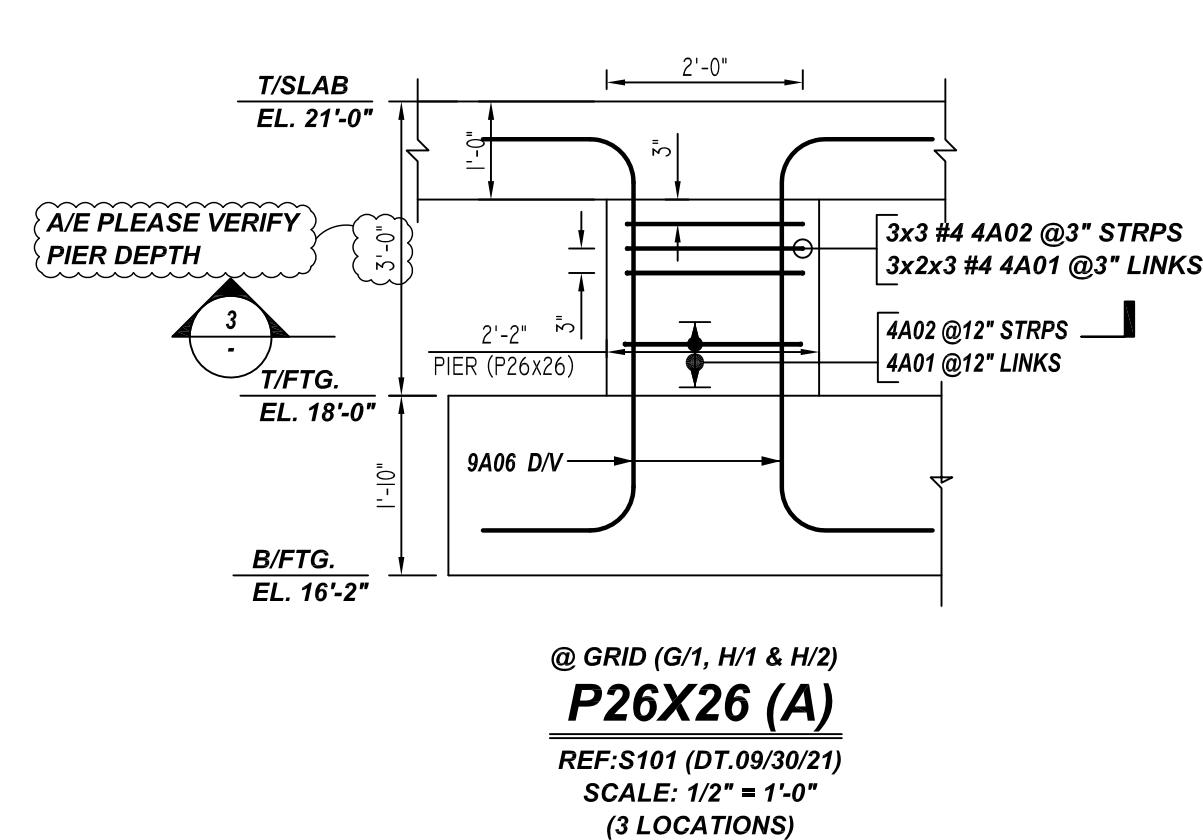
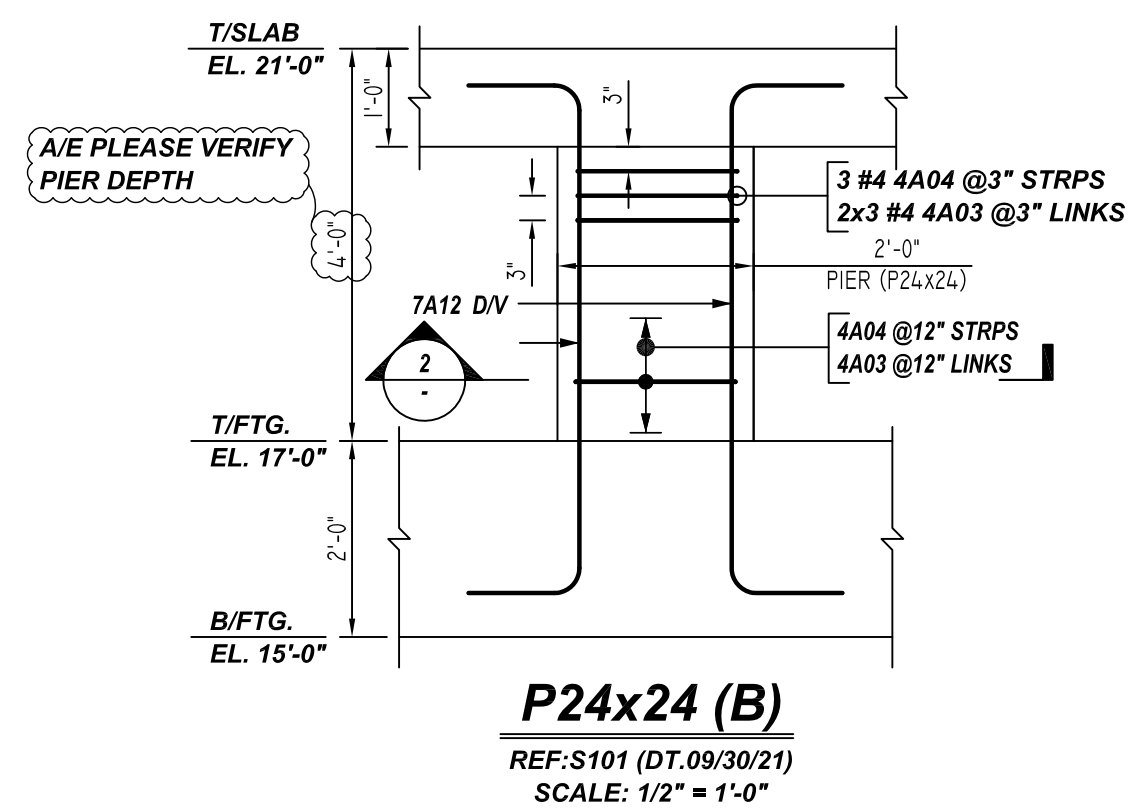
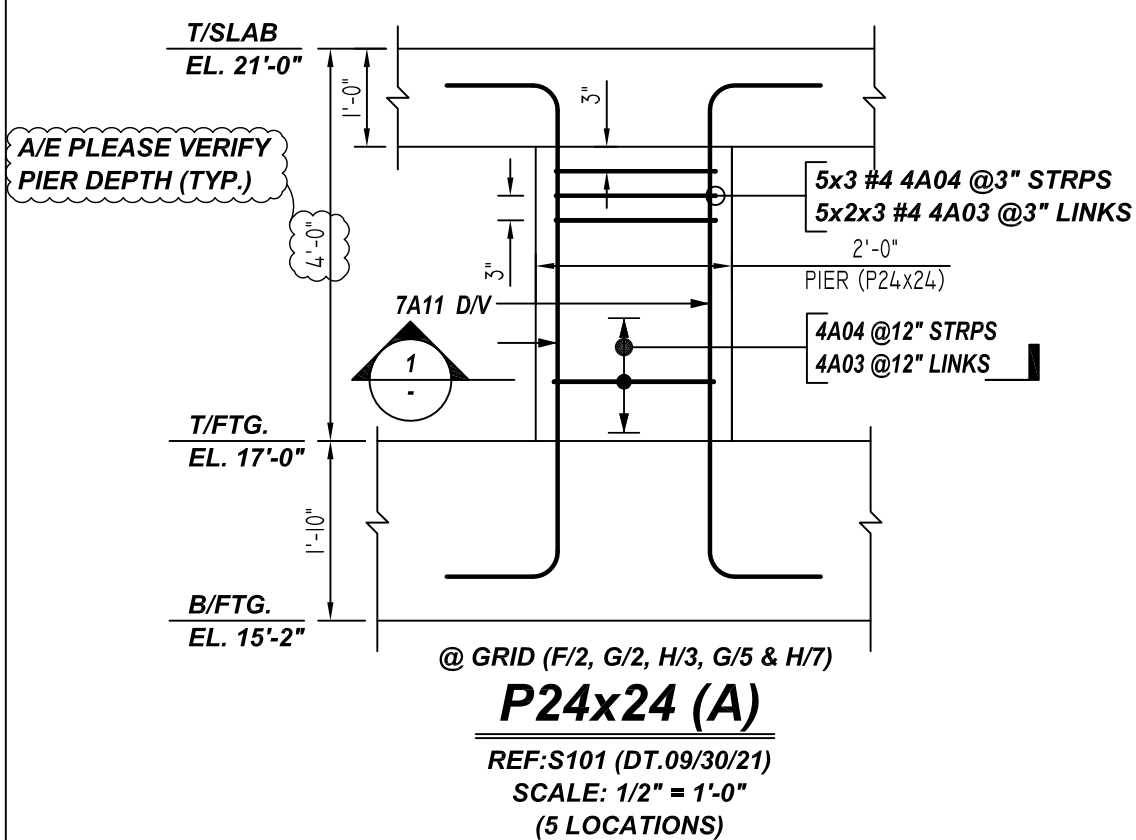
DRAWN BY	DATE	JOB NO	SHEET NO.
RS/MET	03.29.22	M92270229P	R01

REV NO	DATE	SENT FOR	REV NO	DATE	SENT FOR
0	03.29.22	APPROVAL			

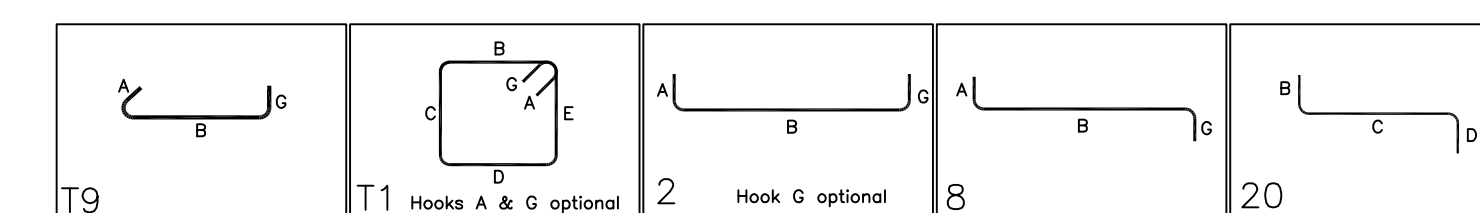
NOTICE

SHORTAGES, IMPROPER FABRICATION OR CLAIMS FOR ANY OTHER REASON MUST BE REPORTED TO THIS COMPANY WITHIN 10 DAYS FROM ORIGINAL DELIVERY. THIS COMPANY ALSO RESERVES THE RIGHT TO FIELD INSPECT MATERIALS PRIOR TO REPLACEMENT OR RECONDITIONING OF MATERIALS AND WILL NOT BE LIABLE FOR CHARGES FROM WORK DONE IN THE FIELD WITHOUT PRIOR AUTHORIZATION FROM THIS COMPANY.

REINFORCING STEEL PLACING DRAWING ONLY. USE IN CONJUNCTION WITH CONTRACT DRAWINGS & SPECIFICATIONS. ELEVATIONS & DIMENSIONS SHOWN ON DRAWING ARE FOR DETAILING PURPOSES ONLY AND SHOULD NOT BE USED FOR CONSTRUCTION UNLESS VERIFIED BY ENGINEER OR CONTRACTOR.



Bar Mark	Qty	Size	Total Length	Type	X	Y	Z	W	V	U	T	S	R	Q	P	O	N	M	L	K	J	I	H	G	F	E	D	C	B	A
4A01	62	#4	2'-7"	T9	0'-4 1/2"	1'-10"																								
4A02	20	#4	8'-1"	T1	0'-4 1/2"	1'-10"	1'-10"	1'-10"	1'-10"																					
4A03	84	#4	2'-5"	T9	0'-4 1/2"	1'-8"																								
4A04	36	#4	7'-5"	T1	0'-4 1/2"	1'-8"	1'-8"	1'-8"	1'-8"																					
4A05	12	#4	7'-9"	T1	0'-4 1/2"	1'-10"	1'-8"	1'-10"	1'-8"																					
4A06	5	#4	9'-1"	T1	0'-4 1/2"	2'-4"	1'-10"	2'-4"	1'-10"																					
4A07	5	#4	3'-1"	T9	0'-4 1/2"	2'-4"																								
7A11	40	#7	7'-5"	2	1'-2"	5'-1"																								
7A12	8	#7	7'-7"	2	1'-2"	5'-3"																								
7A13	5	#7	8'-3"	2	1'-2"	5'-11"																								
7A14	3	#7	8'-3"	8	1'-2"	5'-11"																								
7A18	8	#7	8'-11"	2	1'-2"	4'-7"																								
9A03	10	#9	7'-5"	2	1'-2"	4'-7"																								
9A04	3	#9	8'-0"	20	1'-7"	4'-10"	1'-7"																							
9A05	5	#9	8'-0"	2	1'-7"	4'-10"																								
9A06	24	#9	7'-3"	2	1'-7"	4'-1"																								



**ALL BARS IN THIS DRAWING
ASTM A615 GRADE 60
BLACK UNCOATED**

A/E PLEASE VERIFY COVER DETAIL.

TYPICAL REINFORCING BAR CLEARANCE TABLE	
LOCATION	MIN. COVER
PIER SIDES	2" CLR

REBAR GRADE 60 ASTM A-615		
SPLICES USED		
CLASS B 4,000 psi UNO		
TOP BARS	OTHER BARS	
#3 15"	#3 12"	
#4 20"	#4 15"	
#5 25"	#5 19"	
#6 29"	#6 23"	
#7 43"	#7 33"	
#8 49"	#8 37"	
#9 55"	#9 42"	
#10 62"	#10 47"	
#11 68"	#11 53"	
#14 -	-	

ABBREVIATIONS		BAR MARK SIZE EQUIVALENT	
ADD.	= Additional	Imperial	Soft Metric
B.O.W.	= Bottom of wall	#3	#10
C.B.	= Corner Bars	#4	#13
DIAG.	= Diagonal	#5	#16
D.O.	= Door Opening	#6	#19
DWLS.	= Dowels	#7	#22
E.F.	= Each Face	#8	#25
E.S.	= Each Side	#9	#29
E.W.	= Each Way	#10	#32
FTG.	= Footing	#11	#36
F.F.	= Far Face		
HORIZ.	= Horizontal		
I.F.	= Inside Face		
INTERS.	= Intersection		
L.W.	= long Way		
N.F.	= Near Face		
O.F.	= Outside Face		
S.W.	= Short Way		
T&B	= Top & Bottom		
T.O.W.	= Top of Wall		
Trans.	= Transverse		
VERT.	= Vertical		

2-10 MAVERICK SQ
PIER REINFORCEMENT DETAILS
EAST BOSTON, MA 02128
CUSTOMER: ALARIS CONSTRUCTION
DESIGNER: -

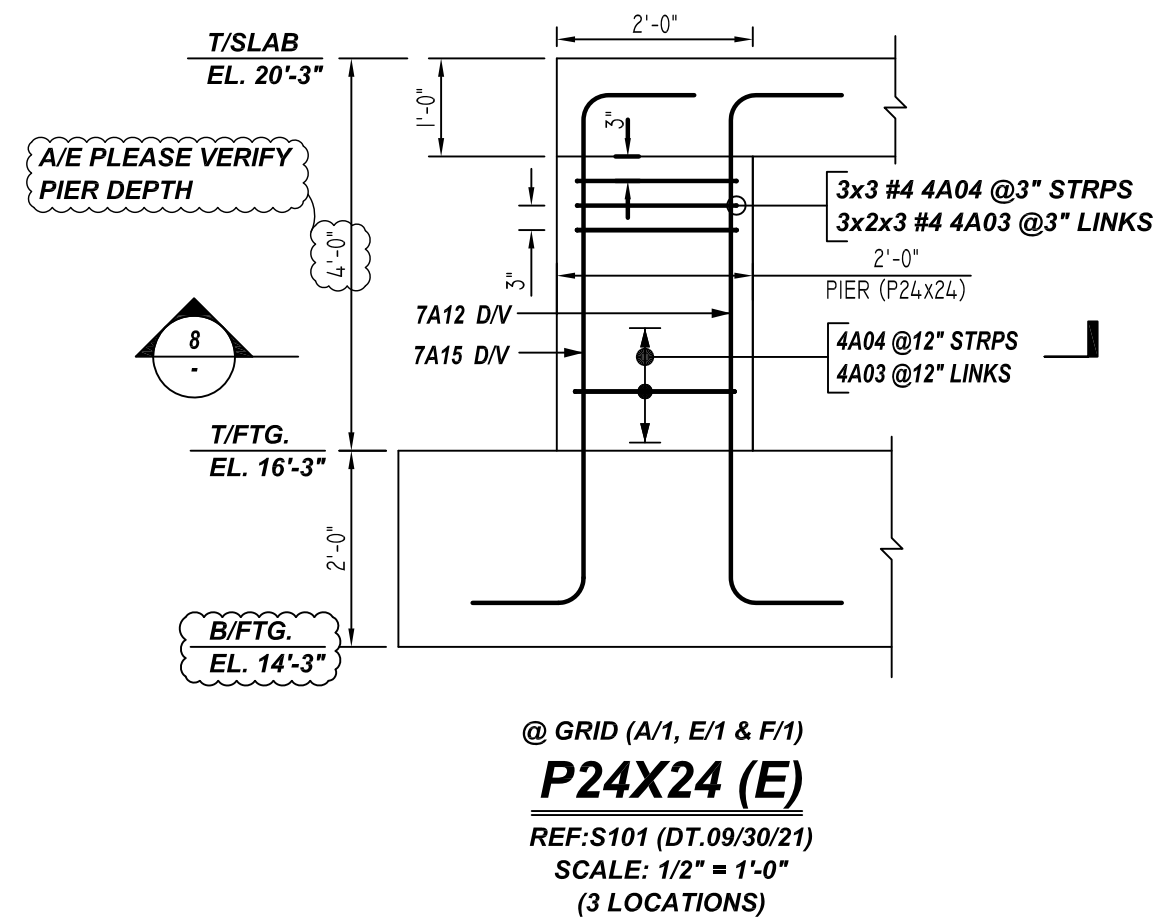
REV NO	DATE	APPROVAL	REV NO	DATE	SENT FOR
0	03.29.22				

DRAWN BY	DATE	JOB NO	SHEET NO.
RS/MET	03.29.22	M92270229P	R02

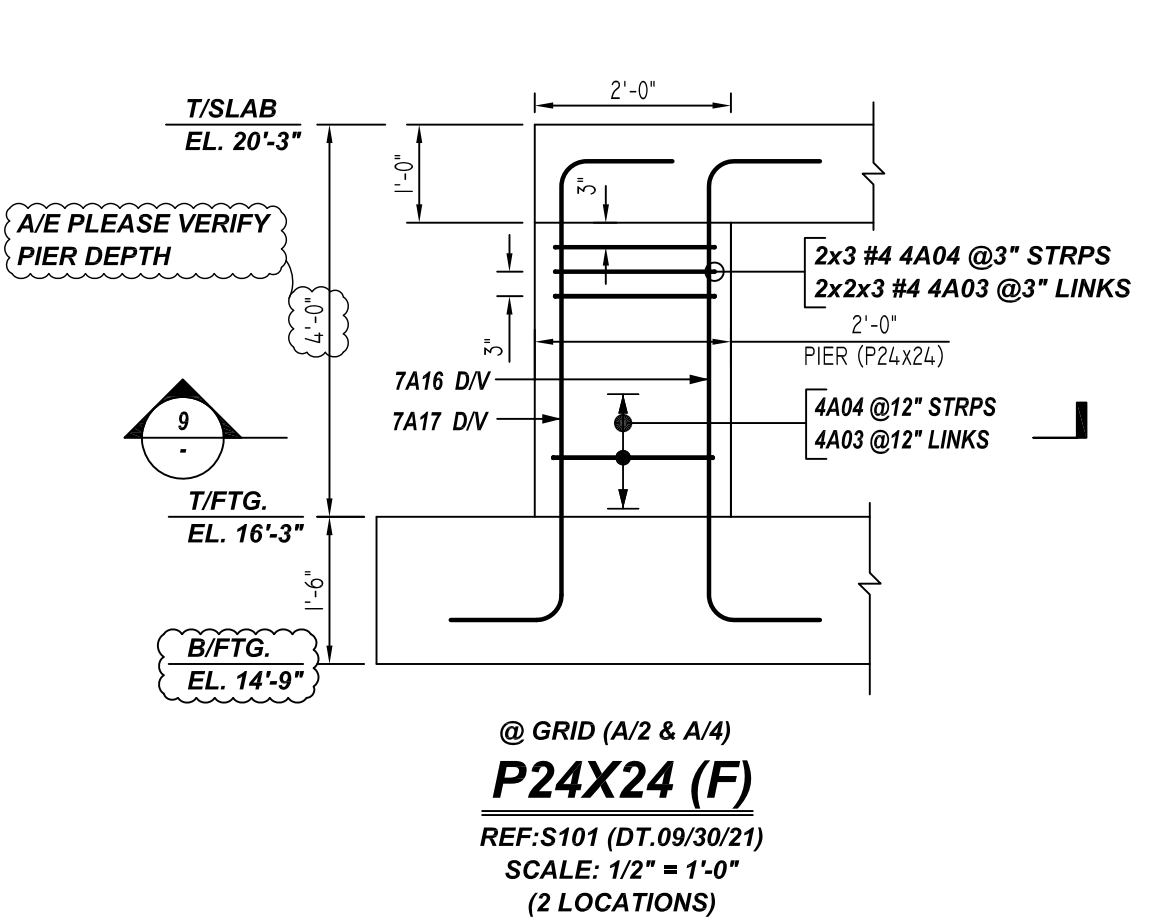
NOTICE

SHORTAGES, IMPROPER FABRICATION OR CLAIMS FOR ANY OTHER REASON MUST BE REPORTED TO THIS COMPANY WITHIN 10 DAYS FROM ORIGINAL DELIVERY. THIS COMPANY ALSO RESERVES THE RIGHT TO FIELD INSPECT MATERIALS PRIOR TO REPLACEMENT OR RECONDITIONING OF MATERIALS AND WILL NOT BE LIABLE FOR CHARGES FROM WORK DONE IN THE FIELD WITHOUT PRIOR AUTHORIZATION FROM THIS COMPANY.

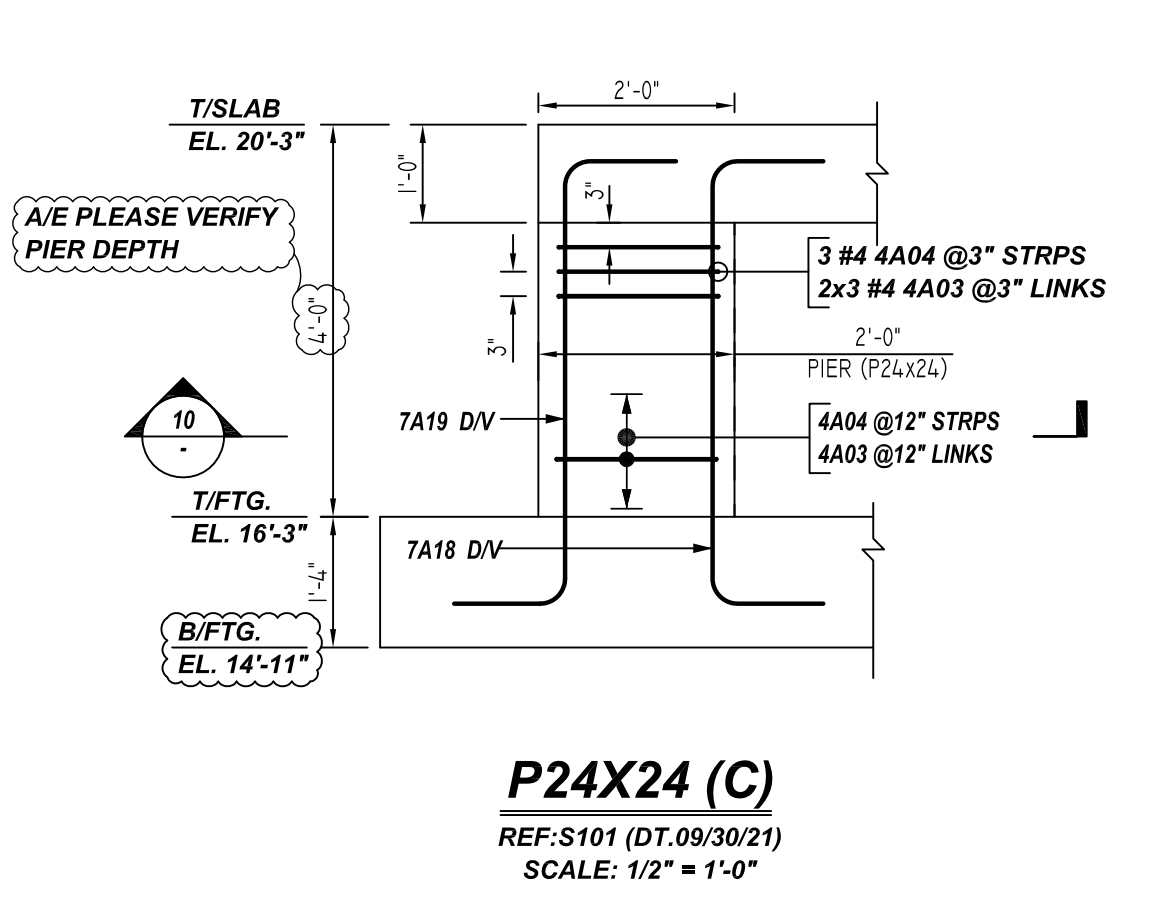
REINFORCING STEEL PLACING DRAWING ONLY. USE IN CONJUNCTION WITH CONTRACT DRAWINGS & SPECIFICATIONS. ELEVATIONS & DIMENSIONS SHOWN ON DRAWING ARE FOR DETAILING PURPOSES ONLY AND SHOULD NOT BE USED FOR CONSTRUCTION UNLESS VERIFIED BY ENGINEER OR CONTRACTOR.



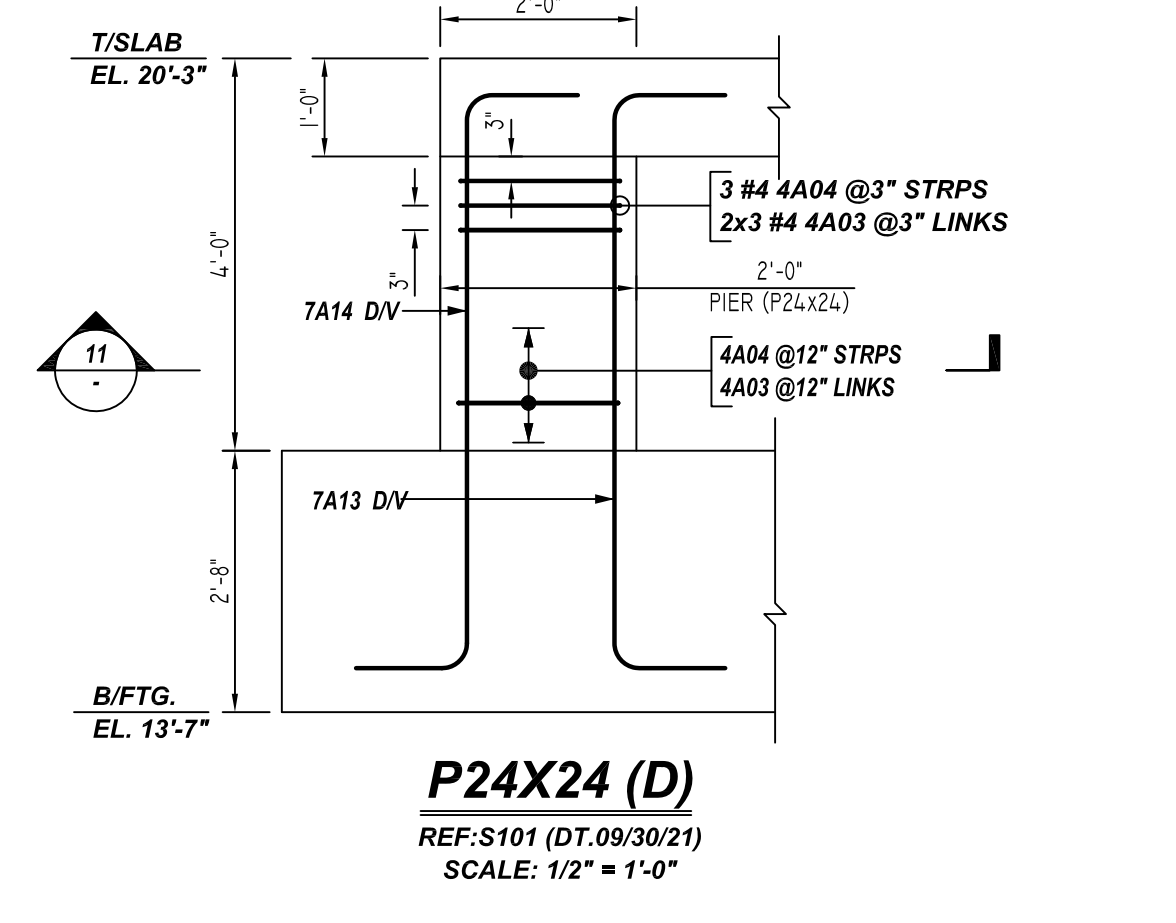
P24X24 (E)
REF: S101 (DT.09/30/21)
SCALE: 1/2" = 1'-0"
(3 LOCATIONS)



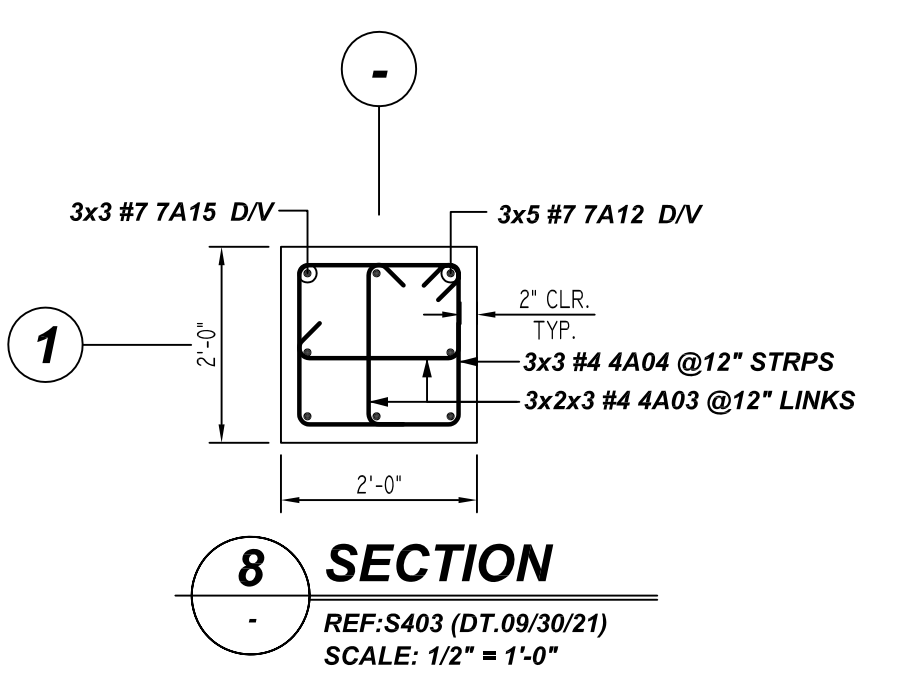
P24X24 (F)
REF: S101 (DT.09/30/21)
SCALE: 1/2" = 1'-0"
(2 LOCATIONS)



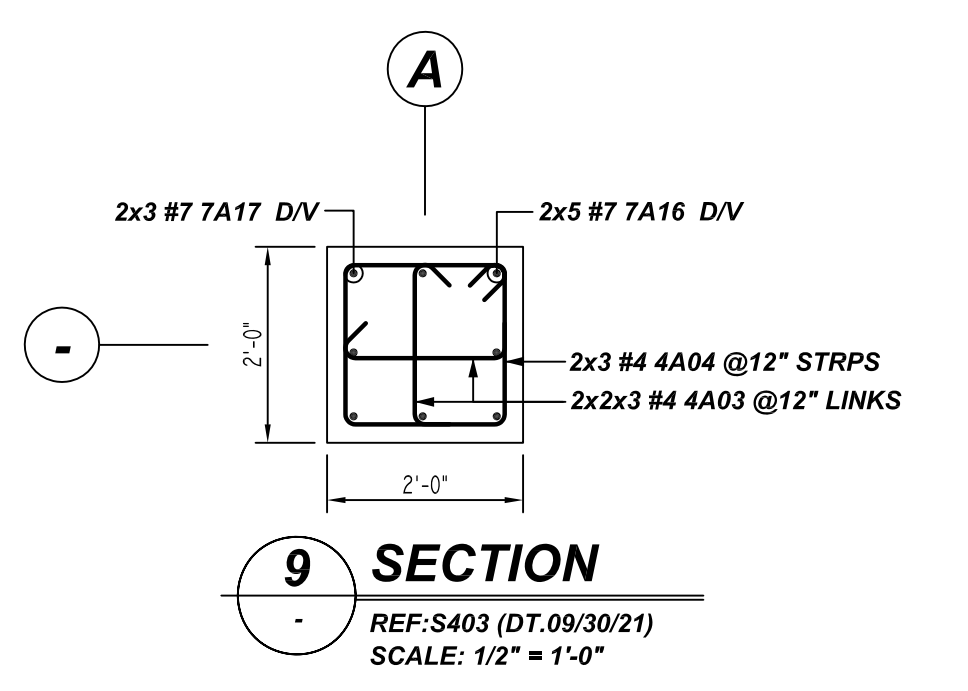
P24X24 (C)
REF: S101 (DT.09/30/21)
SCALE: 1/2" = 1'-0"



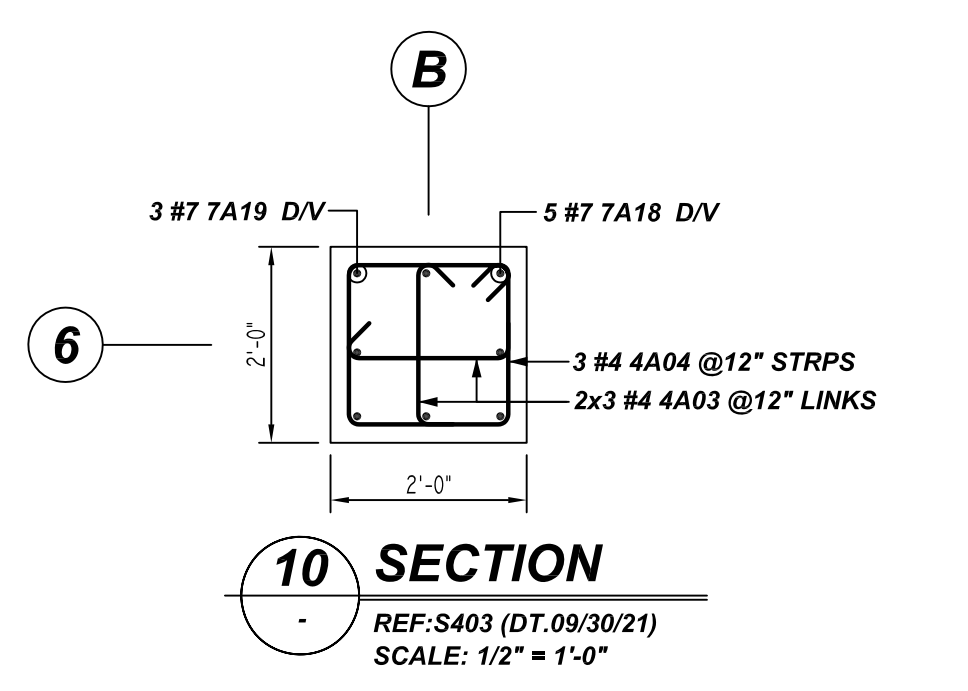
P24X24 (D)
REF: S101 (DT.09/30/21)
SCALE: 1/2" = 1'-0"



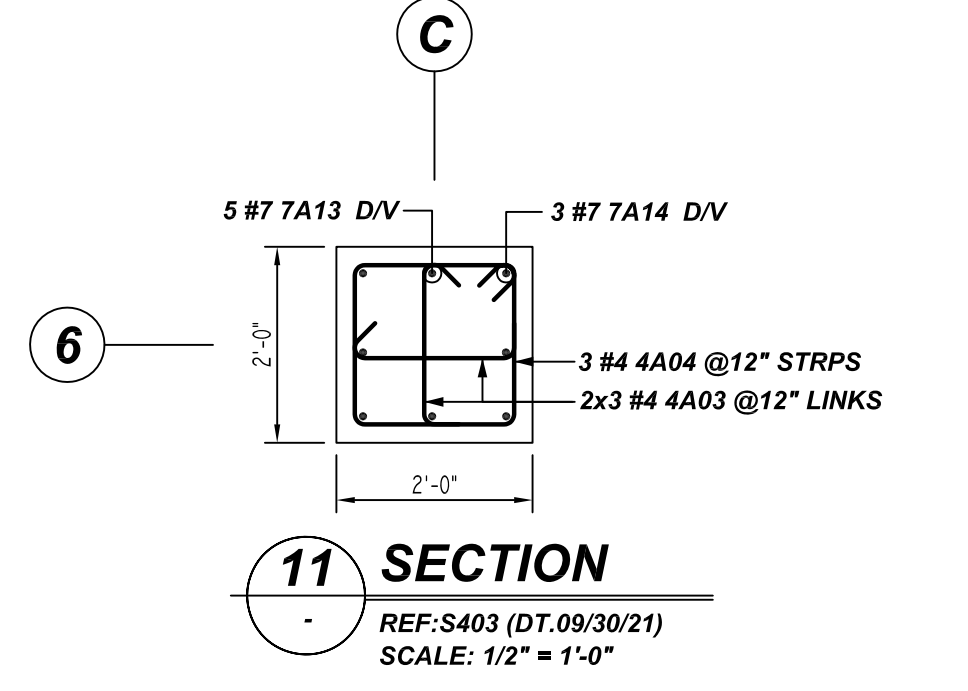
SECTION 8
REF: S403 (DT.09/30/21)
SCALE: 1/2" = 1'-0"



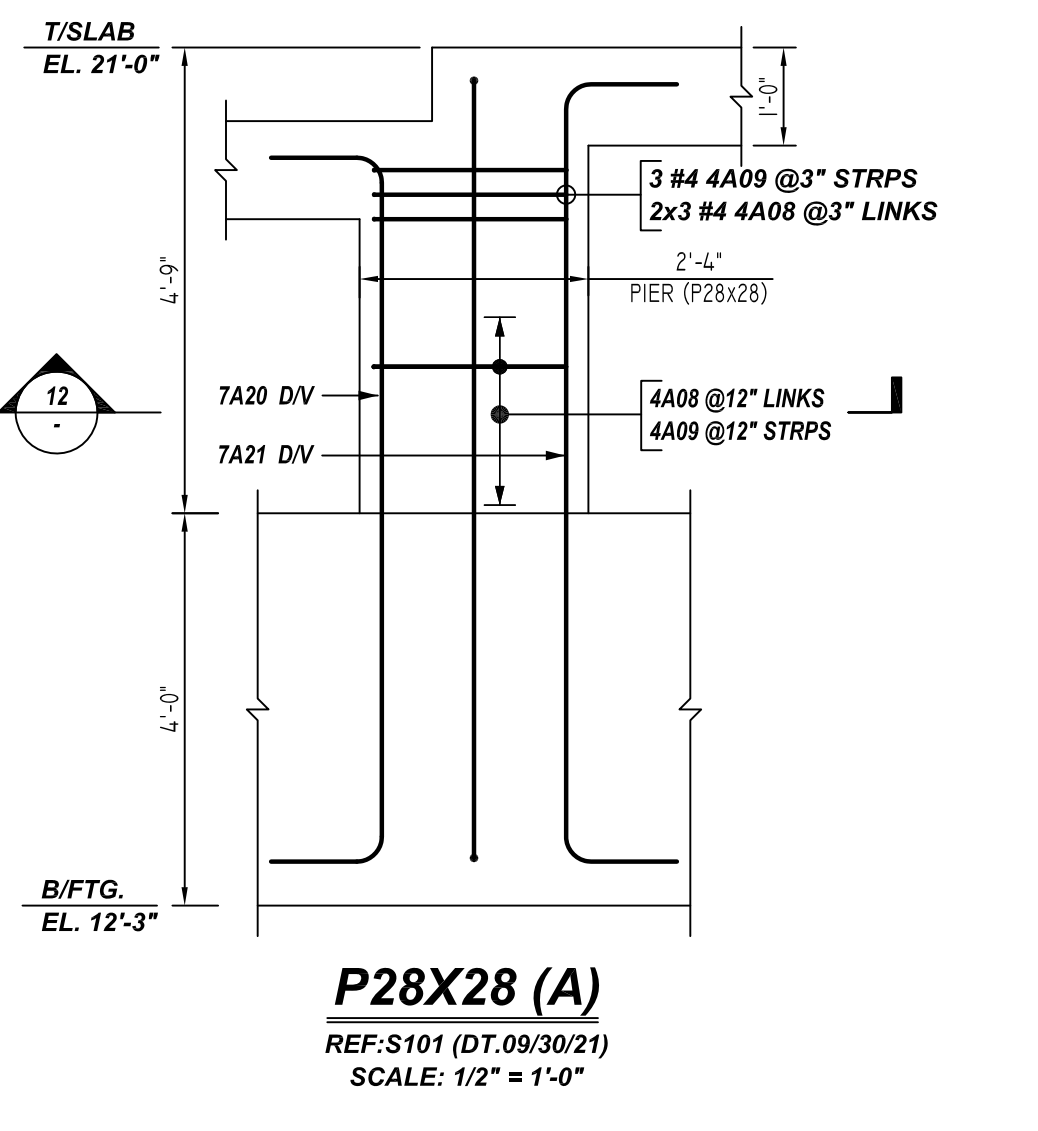
SECTION 9
REF: S403 (DT.09/30/21)
SCALE: 1/2" = 1'-0"



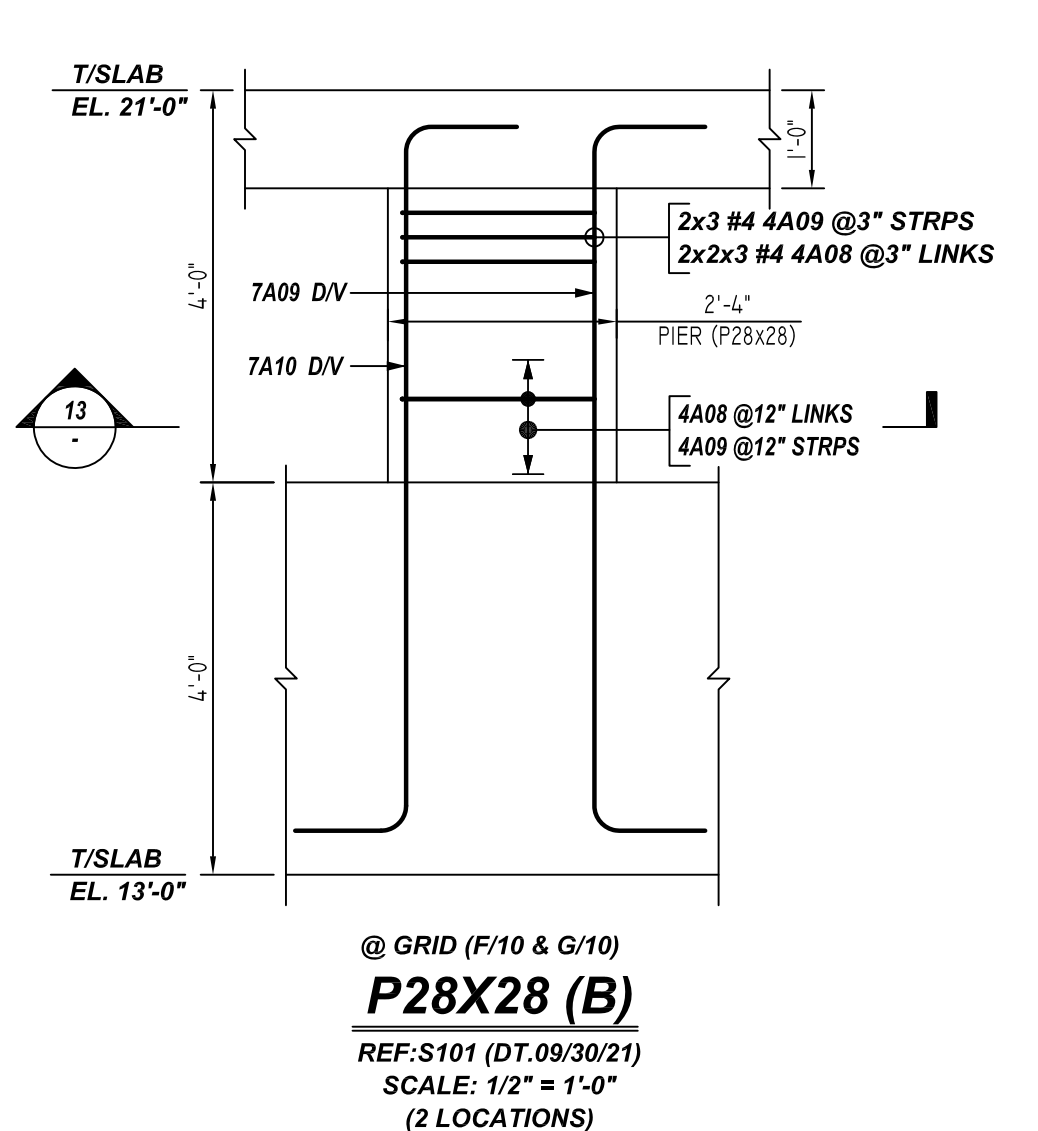
SECTION 10
REF: S403 (DT.09/30/21)
SCALE: 1/2" = 1'-0"



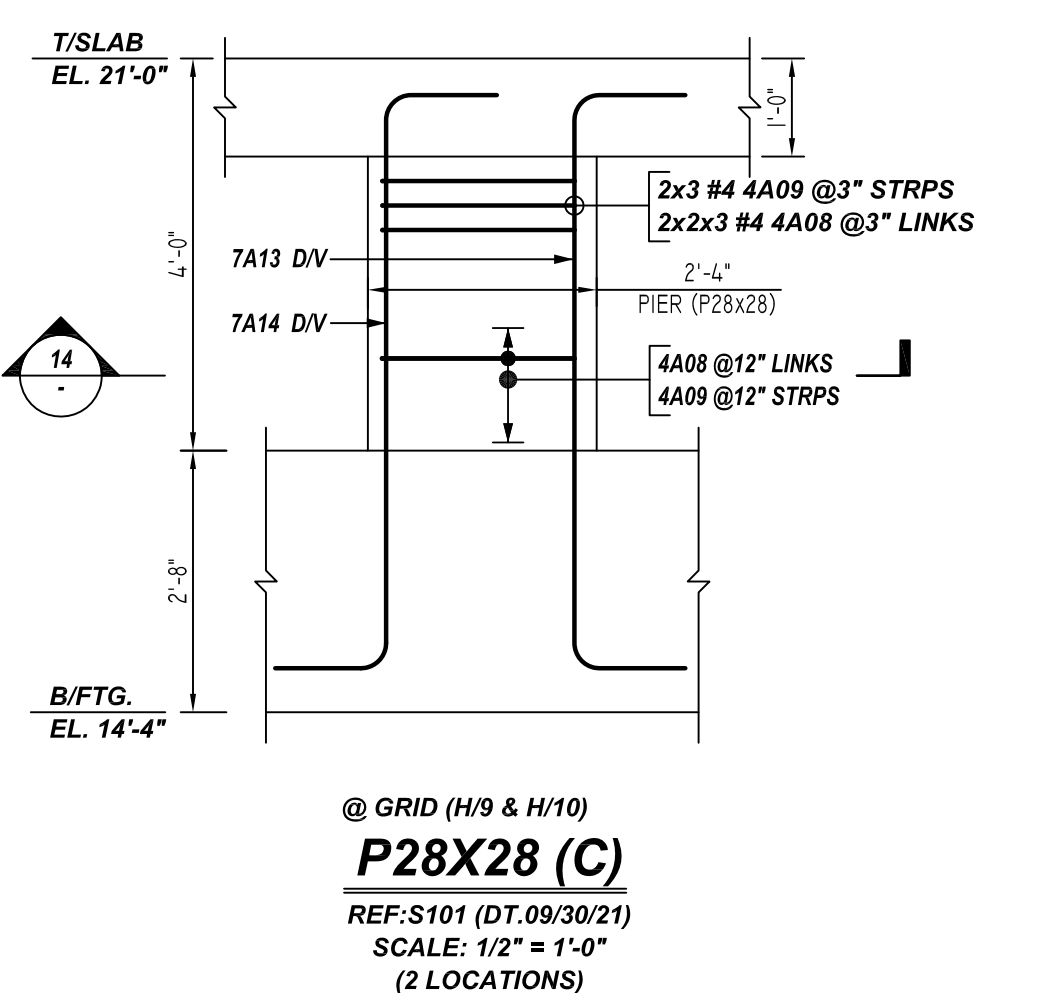
SECTION 11
REF: S403 (DT.09/30/21)
SCALE: 1/2" = 1'-0"



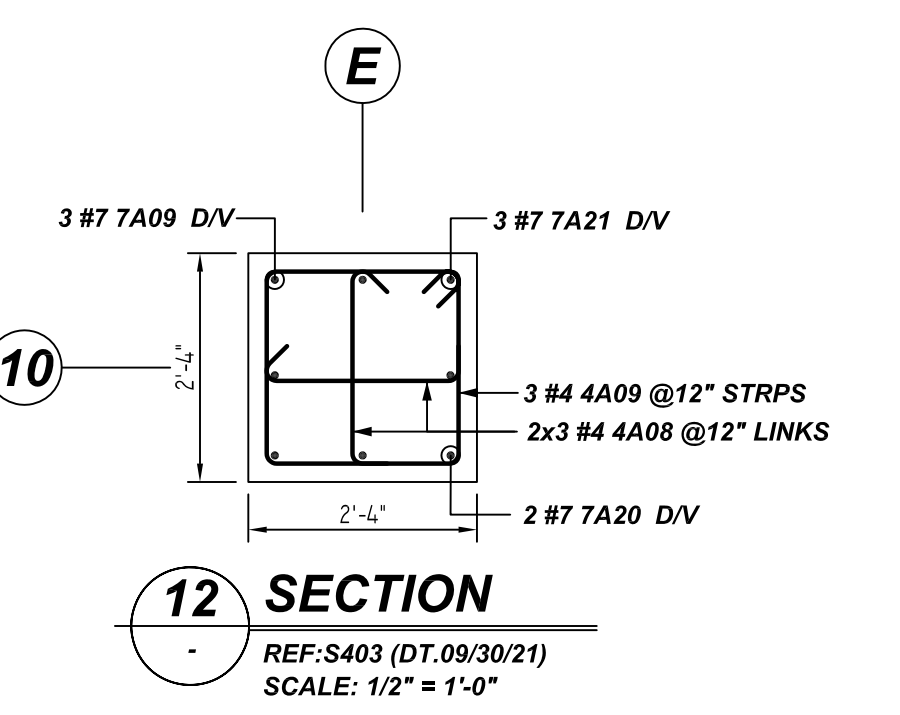
P28X28 (A)
REF: S101 (DT.09/30/21)
SCALE: 1/2" = 1'-0"



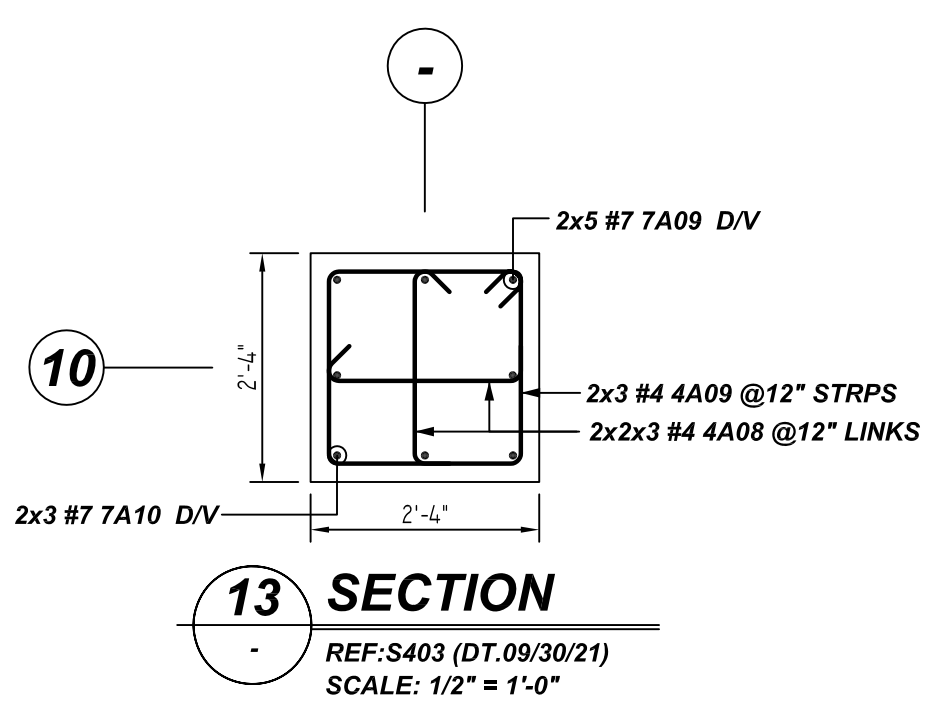
P28X28 (B)
REF: S101 (DT.09/30/21)
SCALE: 1/2" = 1'-0"
(2 LOCATIONS)



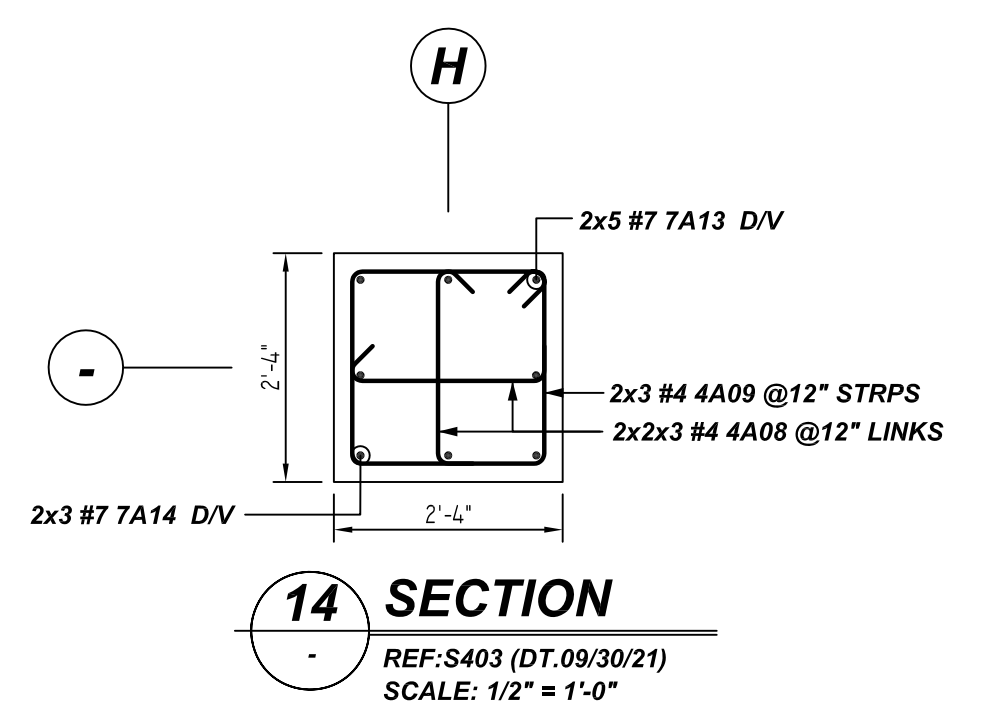
P28X28 (C)
REF: S101 (DT.09/30/21)
SCALE: 1/2" = 1'-0"
(2 LOCATIONS)



SECTION 12
REF: S403 (DT.09/30/21)
SCALE: 1/2" = 1'-0"

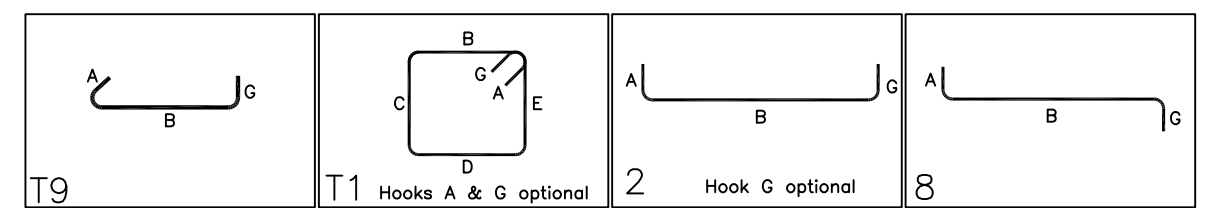


SECTION 13
REF: S403 (DT.09/30/21)
SCALE: 1/2" = 1'-0"



SECTION 14
REF: S403 (DT.09/30/21)
SCALE: 1/2" = 1'-0"

Bar Mark	Qty	Size	Total Length	Type	X	Y	Z	W	V	U	T	S	R	Q	P	O	N	M	L	K	J	I	H	G	F	E	D	C	B	A		
4A03	84	#4	2'-5"	T9	0'-4"	1'-8"																										
4A04	42	#4	7'-5"	T9	0'-4"	1'-8"																										
4A08	66	#4	2'-5"	T9	0'-4"	1'-8"																										
4A09	30	#4	8'-2"	T9	0'-4"	1'-8"																										
7A09	13	#7	9'-7"	2	1'-2"	7'-3"																										
7A10	6	#7	9'-7"	8	1'-2"	7'-3"																										
7A12	15	#7	7'-7"	2	1'-2"	5'-3"																										
7A13	15	#7	8'-3"	2	1'-2"	5'-11"																										
7A14	9	#7	8'-3"	8	1'-2"	5'-11"																										
7A15	9	#7	7'-7"	8	1'-2"	5'-3"																										
7A16	10	#7	7'-1"	2	1'-2"	4'-8"																										
7A17	6	#7	7'-1"	8	1'-2"	4'-8"																										
7A18	5	#7	6'-11"	2	1'-2"	4'-7"																										
7A19	3	#7	6'-11"	8	1'-2"	4'-7"																										
7A20	2	#7	10'-4"	8	1'-2"	8'-0"																										
7A21	3	#7	10'-4"	2	1'-2"	8'-0"																										



**ALL BARS IN THIS DRAWING
ASTM A615 GRADE 60
BLACK UNCOATED**

A/E PLEASE VERIFY COVER DETAIL

TYPICAL REINFORCING BAR CLEARANCE TABLE	
LOCATION	MIN. COVER
PIER SIDES	2" CLR

REBAR GRADE 60 ASTM A-615		
SPLICES USED		
CLASS B 4,000 psi UNO		
TOP BARS	OTHER BARS	
#3 15"	#3 12"	
#4 20"	#4 15"	
#5 25"	#5 19"	
#6 29"	#6 23"	
#7 43"	#7 33"	
#8 49"	#8 37"	
#9 55"	#9 42"	
#10 62"	#10 47"	
#11 68"	#11 53"	
#14 -	#14 -	

ABBREVIATIONS		BAR MARK SIZE EQUIVALENT	
ADD.	= Additional	Imperial	Soft Metric
B.O.W.	= Bottom of wall	#3	#10
C.B.	= Corner Bars	#4	#13
DIAG.	= Diagonal	#5	#16
D.O.	= Door Opening	#6	#19
DWLS.	= Dowels	#7	#22
E.F.	= Each Face	#8	#25
E.S.	= Each Side	#9	#29
E.W.	= Each Way	#10	#32
FTG.	= Footing	#11	#36
F.F.	= Far Face		
HORIZ.	= Horizontal		
I.F.	= Inside Face		
INTERS.	= Intersection		
L.W.	= long Way		
N.F.	= Near Face		
O.F.	= Outside Face		
S.W.	= Short Way		
T&B	= Top & Bottom		
T.O.W.	= Top of Wall		
Trans.	= Transverse		
VERT.	= Vertical		

2-10 MAVERICK SQ
PIER REINFORCEMENT DETAILS
EAST BOSTON, MA 02128

CUSTOMER: ALARIS CONSTRUCTION
DESIGNER: -

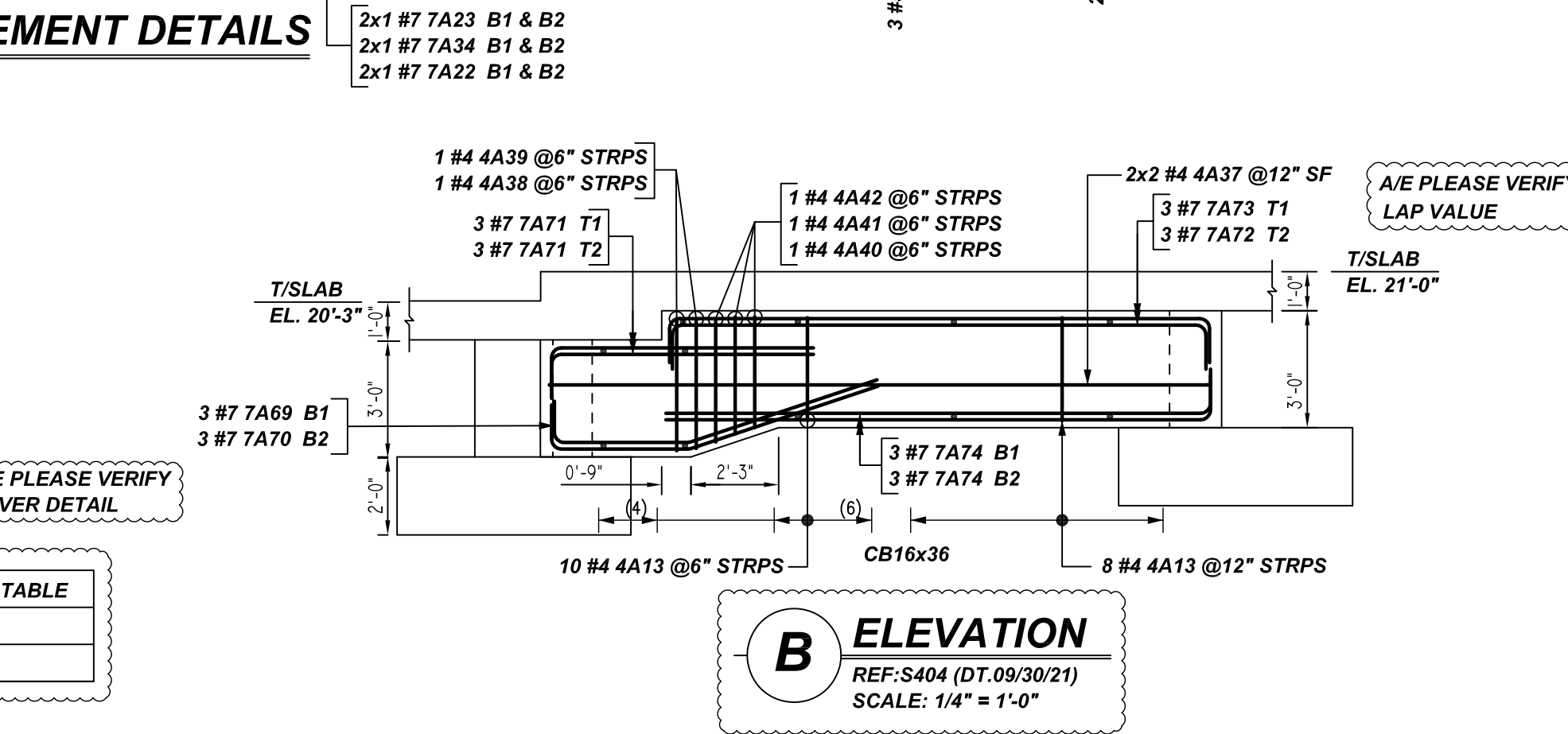
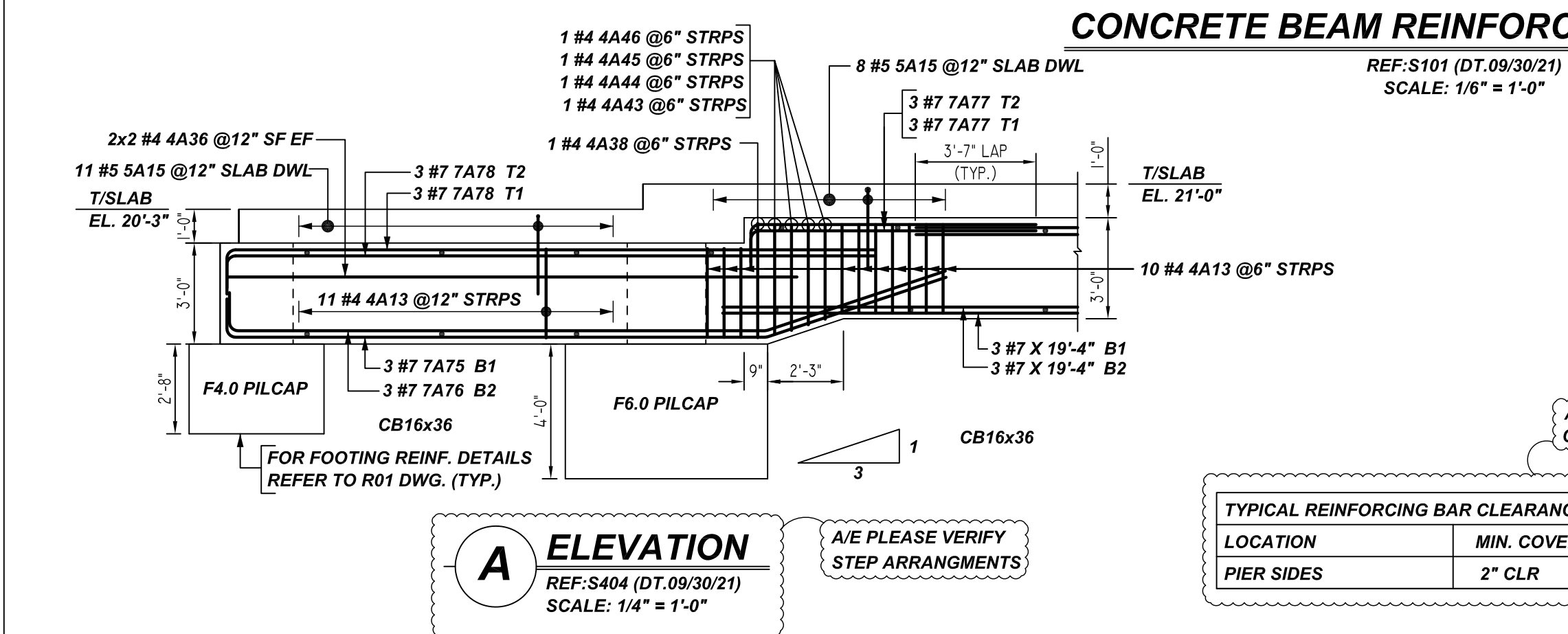
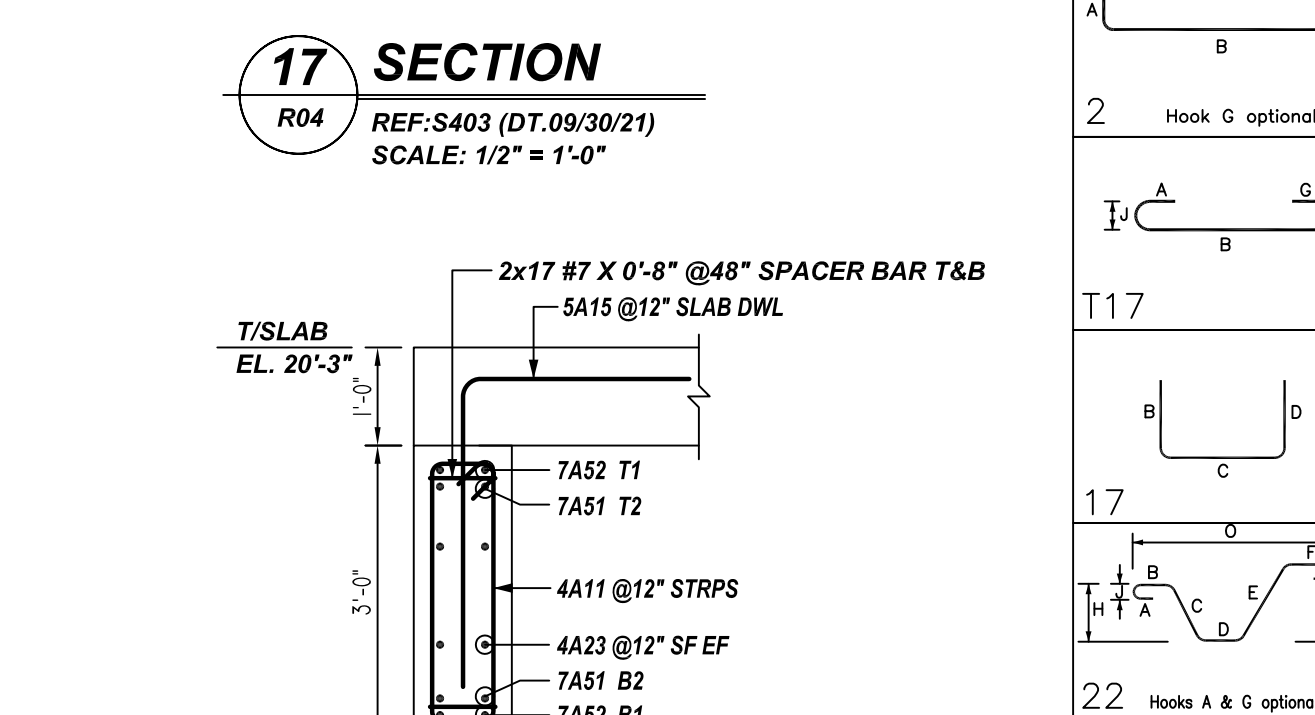
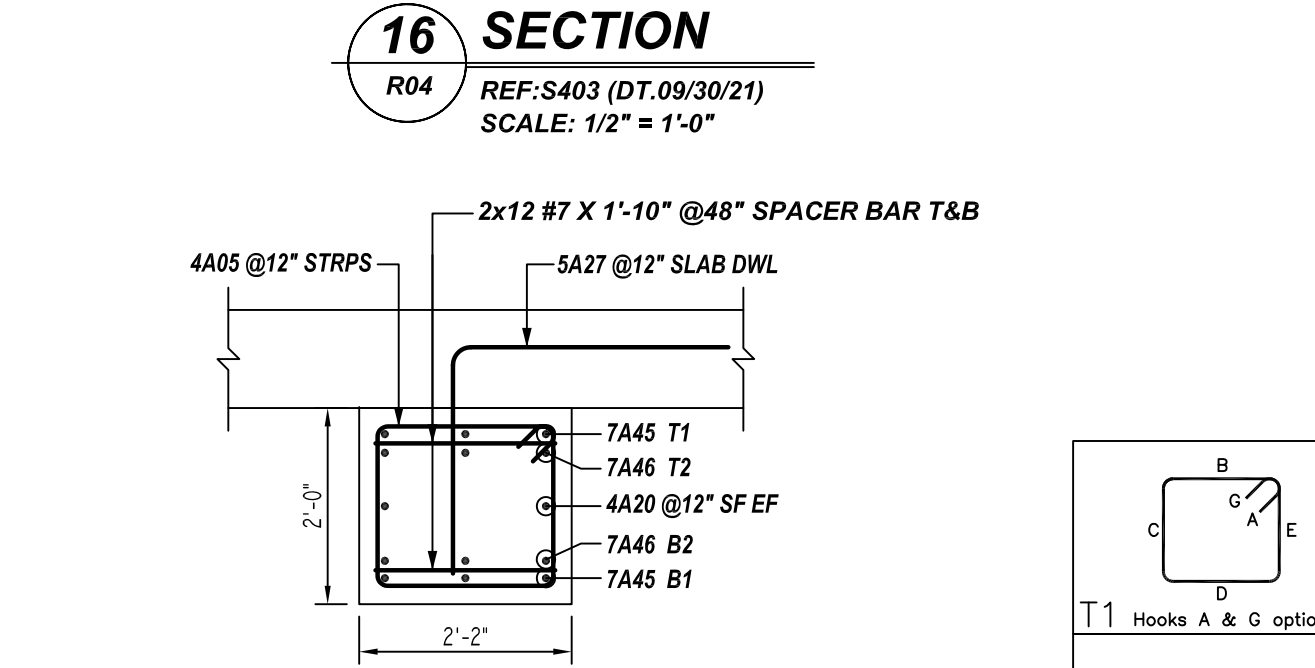
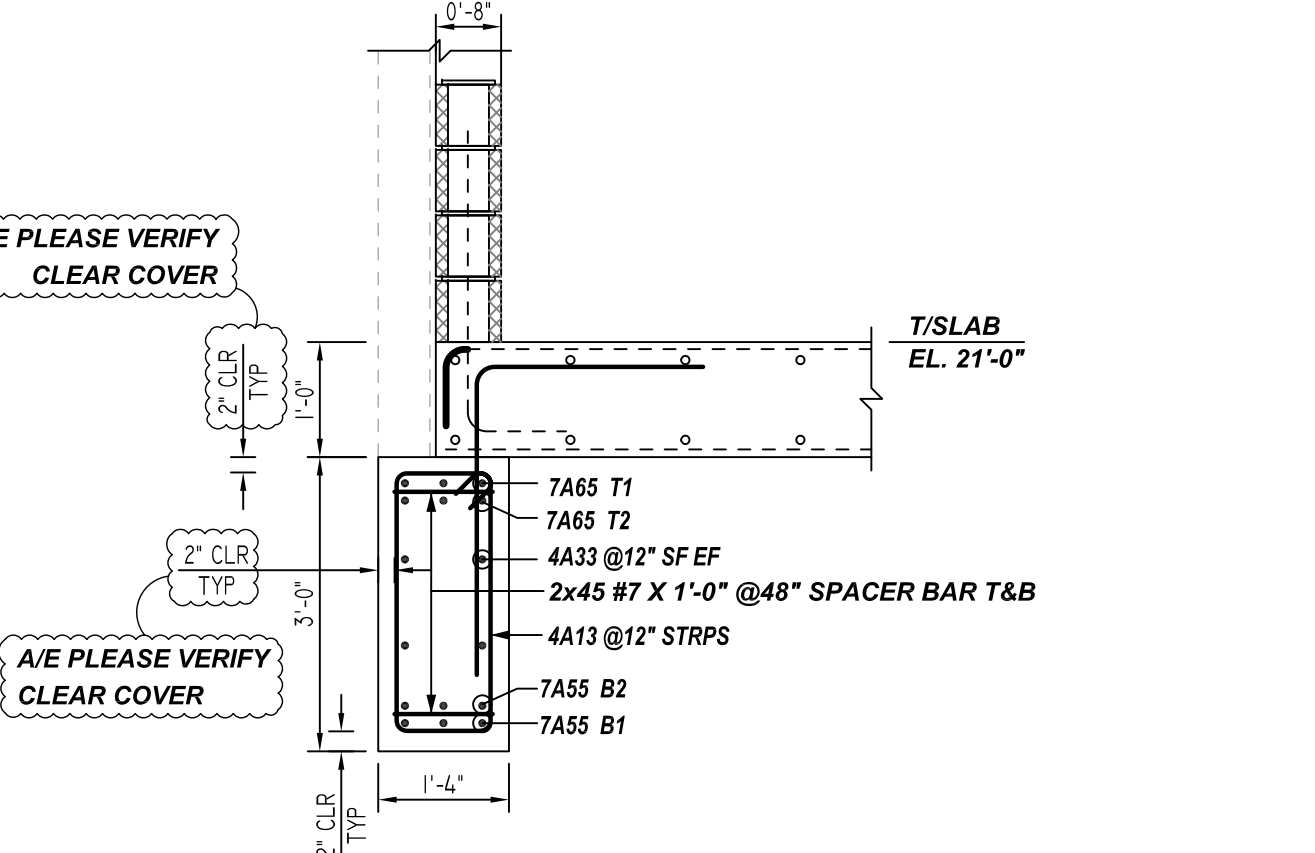
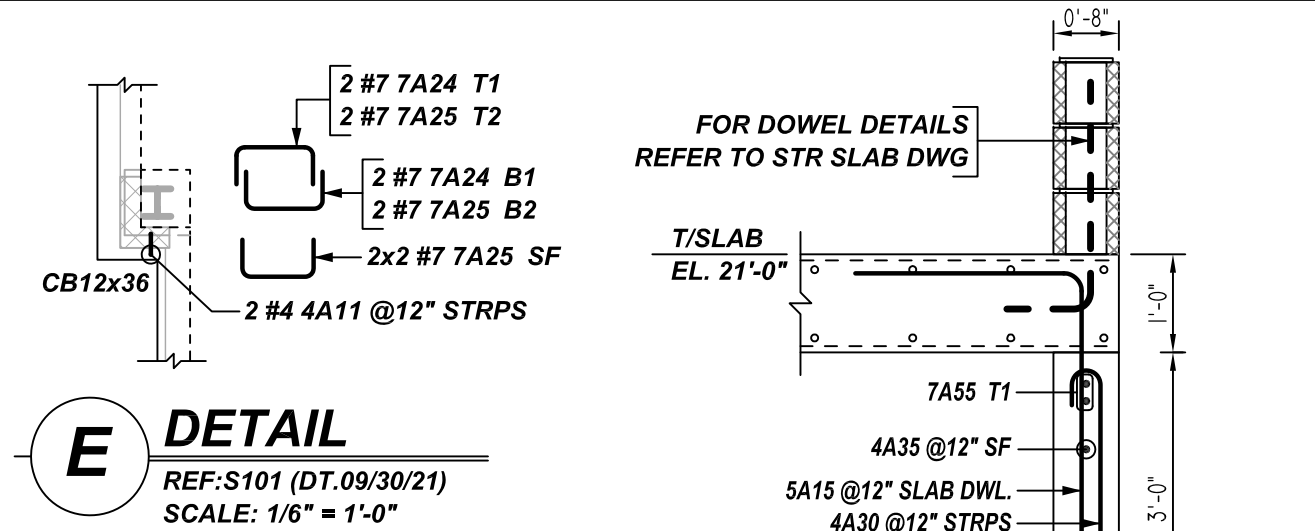
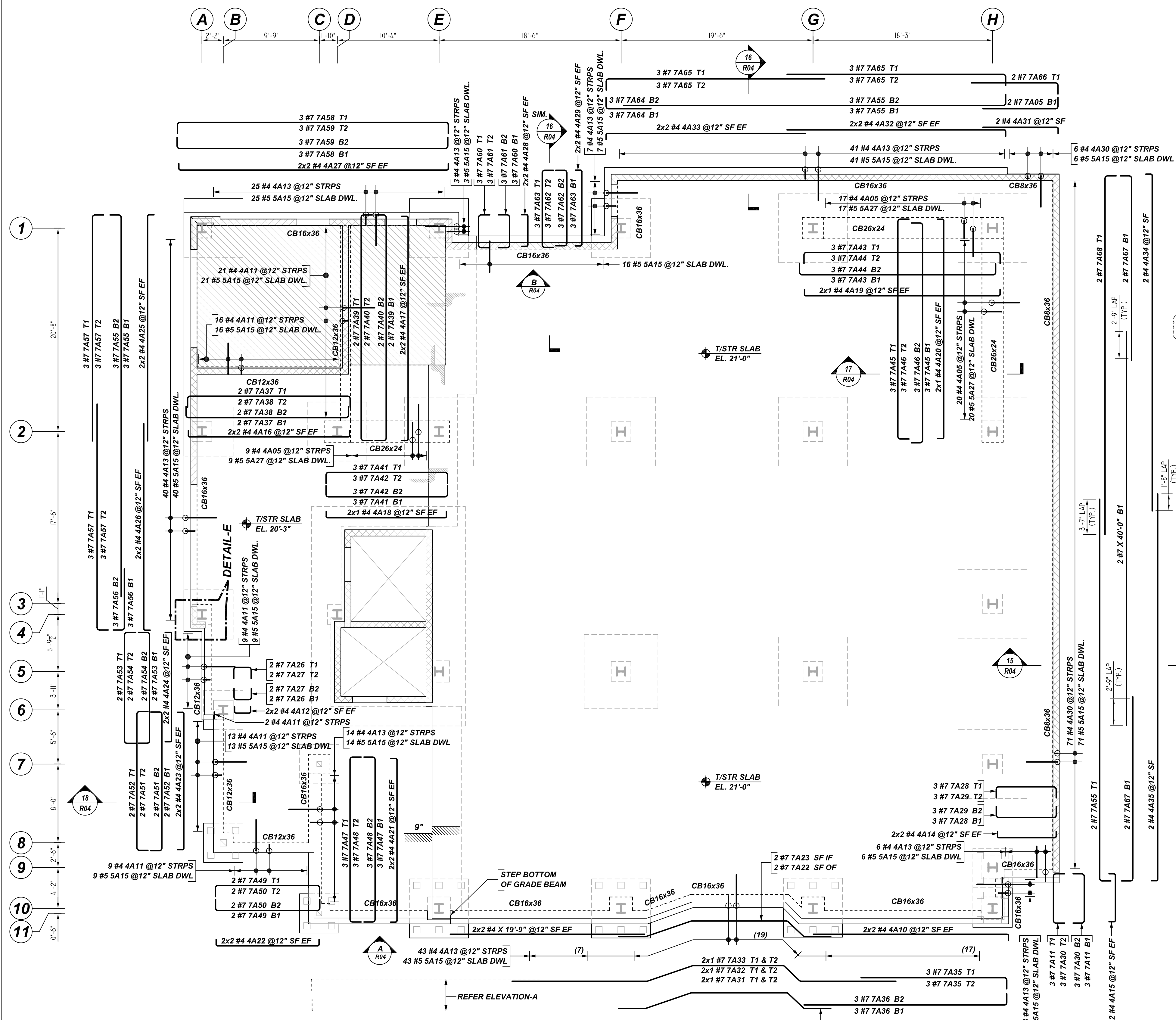
REV NO	DATE	APPROVAL	REV NO	DATE	SENT FOR
0	03.29.22				

DRAWN BY	DATE	JOB NO	SHEET NO.
RS/MET	03.29.22	M92270229P	R03

NOTICE

SHORTAGES, IMPROPER FABRICATION OR CLAIMS FOR ANY OTHER REASON MUST BE REPORTED TO THIS COMPANY WITHIN 10 DAYS FROM ORIGINAL DELIVERY. THIS COMPANY ALSO RESERVES THE RIGHT TO FIELD INSPECT MATERIALS PRIOR TO REPLACEMENT OR RECONDITIONING OF MATERIALS AND WILL NOT BE LIABLE FOR CHARGES FROM WORK DONE IN THE FIELD WITHOUT PRIOR AUTHORIZATION FROM THIS COMPANY.

REINFORCING STEEL PLACING DRAWING ONLY. USE IN CONJUNCTION WITH CONTRACT DRAWINGS & SPECIFICATIONS. ELEVATIONS & DIMENSIONS SHOWN ON DRAWING ARE FOR DETAILING PURPOSES ONLY AND SHOULD NOT BE USED FOR CONSTRUCTION UNLESS VERIFIED BY ENGINEER OR CONTRACTOR.



CONCRETE BEAM REINFORCEMENT DETAILS

TYPICAL REINFORCING BAR CLEARANCE TABLE

LOCATION	MIN. COVER
PIER SIDES	2" CLR

REBAR GRADE 60 ASTM A-615

SPLICES USED

CLASS B 4,000 psi UNO

TOP BARS	OTHER BARS
#3 15"	#3 12"
#4 20"	#4 15"
#5 25"	#5 19"
#6 29"	#6 23"
#7 43"	#7 33"
#8 49"	#8 37"
#9 60"	#9 46"
#10 74"	#10 57"
#11 89"	#11 68"
#14 -	#14 -

ABBREVIATIONS

- ADD. = Additional
- B.O.W. = Bottom of wall
- C.B. = Corner Bars
- DIAG. = Diagonal
- D.O. = Door Opening
- D.W.L.S. = Dowels
- E.F. = Each Face
- E.S. = Each Side
- E.W. = Each Way
- F.F. = Footing
- F.F. = Far Face
- HORIZ. = Horizontal
- I.F. = Inside Face
- INTERS. = Intersection
- L.W. = Long Way
- N.F. = Near Face
- O.F. = Outside Face
- S.W. = Short Way
- T&B = Top & Bottom
- T.O.W. = Top of Wall
- Trans. = Transverse
- VERT. = Vertical

BAR MARK SIZE EQUIVALENT

Imperial	Soft Metric
#3	#10
#4	#13
#5	#16
#6	#19
#7	#22
#8	#25
#9	#29
#10	#32
#11	#36

Bar Mark	Qty	Size	Total Length	Type	X	Y	Z	Y	Y	Y	Y	Y	Y	Y	Y	Y
4A05	4	#4	20'-0"	T1	0'-0"	1'-0"	1'-0"	1'-0"	1'-0"	1'-0"	1'-0"	1'-0"	1'-0"	1'-0"	1'-0"	1'-0"
4A11	4	#4	20'-0"	T1	0'-0"	1'-0"	1'-0"	1'-0"	1'-0"	1'-0"	1'-0"	1'-0"	1'-0"	1'-0"	1'-0"	1'-0"
4A13	4	#4	20'-0"	T1	0'-0"	1'-0"	1'-0"	1'-0"	1'-0"	1'-0"	1'-0"	1'-0"	1'-0"	1'-0"	1'-0"	1'-0"
4A15	4	#4	20'-0"	T1	0'-0"	1'-0"	1'-0"	1'-0"	1'-0"	1'-0"	1'-0"	1'-0"	1'-0"	1'-0"	1'-0"	1'-0"
4A17	4	#4	20'-0"	T1	0'-0"	1'-0"	1'-0"	1'-0"	1'-0"	1'-0"	1'-0"	1'-0"	1'-0"	1'-0"	1'-0"	1'-0"
4A19	4	#4	20'-0"	T1	0'-0"	1'-0"	1'-0"	1'-0"	1'-0"	1'-0"	1'-0"	1'-0"	1'-0"	1'-0"	1'-0"	1'-0"
4A21	4	#4	20'-0"	T1	0'-0"	1'-0"	1'-0"	1'-0"	1'-0"	1'-0"	1'-0"	1'-0"	1'-0"	1'-0"	1'-0"	1'-0"
4A23	4	#4	20'-0"	T1	0'-0"	1'-0"	1'-0"	1'-0"	1'-0"	1'-0"	1'-0"	1'-0"	1'-0"	1'-0"	1'-0"	1'-0"
4A25	4	#4	20'-0"	T1	0'-0"	1'-0"	1'-0"	1'-0"	1'-0"	1'-0"	1'-0"	1'-0"	1'-0"	1'-0"	1'-0"	1'-0"
4A27	4	#4	20'-0"	T1	0'-0"	1'-0"	1'-0"	1'-0"	1'-0"	1'-0"	1'-0"	1'-0"	1'-0"	1'-0"	1'-0"	1'-0"
4A29	4	#4	20'-0"	T1	0'-0"	1'-0"	1'-0"	1'-0"	1'-0"	1'-0"	1'-0"	1'-0"	1'-0"	1'-0"	1'-0"	1'-0"
4A31	4	#4	20'-0"	T1	0'-0"	1'-0"	1'-0"	1'-0"	1'-0"	1'-0"	1'-0"	1'-0"	1'-0"	1'-0"	1'-0"	1'-0"
4A33	4	#4	20'-0"	T1	0'-0"	1'-0"	1'-0"	1'-0"	1'-0"	1'-0"	1'-0"	1'-0"	1'-0"	1'-0"	1'-0"	1'-0"
4A35	4	#4	20'-0"	T1	0'-0"	1'-0"	1'-0"	1'-0"	1'-0"	1'-0"	1'-0"	1'-0"	1'-0"	1'-0"	1'-0"	1'-0"
4A37	4	#4	20'-0"	T1	0'-0"	1'-0"	1'-0"	1'-0"	1'-0"	1'-0"	1'-0"	1'-0"	1'-0"	1'-0"	1'-0"	1'-0"
4A39	4	#4	20'-0"	T1	0'-0"	1'-0"	1'-0"	1'-0"	1'-0"	1'-0"	1'-0"	1'-0"	1'-0"	1'-0"	1'-0"	1'-0"
4A41	4	#4	20'-0"	T1	0'-0"	1'-0"	1'-0"	1'-0"	1'-0"	1'-0"	1'-0"	1'-0"	1'-0"	1'-0"	1'-0"	1'-0"
4A43	4	#4	20'-0"	T1	0'-0"	1'-0"	1'-0"	1'-0"	1'-0"	1'-0"	1'-0"	1'-0"	1'-0"	1'-0"	1'-0"	1'-0"
4A45	4	#4	20'-0"	T1	0'-0"	1'-0"	1'-0"	1'-0"	1'-0"	1'-0"	1'-0"	1'-0"	1'-0"	1'-0"	1'-0"	1'-0"
4A47	4	#4	20'-0"	T1	0'-0"	1'-0"	1'-0"	1'-0"	1'-0"	1'-0"	1'-0"	1'-0"	1'-0"	1'-0"	1'-0"	1'-0"
4A49	4	#4	20'-0"	T1	0'-0"	1'-0"	1'-0"	1'-0"	1'-0"	1'-0"	1'-0"	1'-0"	1'-0"	1'-0"	1'-0"	1'-0"
4A51	4	#4	20'-0"	T1	0'-0"	1'-0"	1'-0"	1'-0"	1'-0"	1'-0"	1'-0"	1'-0"	1'-0"	1'-0"	1'-0"	1'-0"
4A53	4	#4	20'-0"	T1	0'-0"	1'-0"	1'-0"	1'-0"	1'-0"	1'-0"	1'-0"	1'-0"	1'-0"	1'-0"	1'-0"	1'-0"
4A55	4	#4	20'-0"	T1	0'-0"	1'-0"	1'-0"	1'-0"	1'-0"	1'-0"	1'-0"	1'-0"	1'-0"	1'-0"	1'-0"	1'-0"
4A57	4	#4	20'-0"	T1	0'-0"	1'-0"	1'-0"	1'-0"	1'-0"	1'-0"	1'-0"	1'-0"	1'-0"	1'-0"	1'-0"	1'-0"
4A59	4	#4	20'-0"	T1	0'-0"	1'-0"	1'-0"	1'-0"	1'-0"	1'-0"	1'-0"	1'-0"	1'-0"	1'-0"	1'-0"	1'-0"
4A61	4	#4	20'-0"	T1	0'-0"	1'-0"	1'-0"	1'-0"	1'-0"	1'-0"	1'-0"	1'-0"	1'-0"	1'-0"	1'-0"	1'-0"
4A63	4	#4	20'-0"	T1	0'-0"	1'-0"	1'-0"	1'-0"	1'-0"	1'-0"	1'-0"	1'-0"	1'-0"	1'-0"	1'-0"	1'-0"
4A65	4	#4	20'-0"	T1	0'-0"	1'-0"	1'-0"	1'-0"	1'-0"	1'-0"	1'-0"	1'-0"	1'-0"	1'-0"	1'-0"	1'-0"
4A67	4	#4	20'-0"	T1	0'-0"	1'-0"	1'-0"	1'-0"	1'-0"	1'-0"	1'-0"	1'-0"	1'-0"	1'-0"	1'-0"	1'-0"
4A69	4	#4	20'-0"	T1	0'-0"	1'-0"	1'-0"	1'-0"	1'-0"	1'-0"	1'-0"	1'-0"	1'-0"	1'-0"	1'-0"	1'-0"
4A71	4	#4	20'-0"	T1	0'-0"	1'-0"	1'-0"	1'-0"	1'-0"	1'-0"	1'-0"	1'-0"	1'-0"	1'-0"	1'-0"	1'-0"
4A73	4	#4	20'-0"	T1	0'-0"	1'-0"	1'-0"	1'-0"	1'-0"	1'-0"	1'-0"	1'-0"	1'-0"	1'-0"	1'-0"	1'-0"
4A75	4	#4	20'-0"	T1	0'-0"	1'-0"	1'-0"	1'-0"	1'-0"	1'-0"	1'-0"	1'-0"	1'-0"	1'-0"	1'-0"	1'-0"
4A77	4	#4	20'-0"	T1	0'-0"	1'-0"	1'-0"	1'-0"	1'-0"	1'-0"	1'-0"	1'-0"	1'-0"	1'-0"	1'-0"	1'-0"
4A79	4	#4	20'-0"	T1	0'-0"	1'-0"	1'-0"	1'-0"	1'-0"	1'-0"	1'-0"	1'-0"	1'-0"	1'-0"	1'-0"	1'-0"
4A81	4	#4	20'-0"	T1	0'-0"	1'-0"	1'-0"	1'-0"	1'-0"	1'-0"	1'-0"	1'-0"	1'-0"	1'-0"	1'-0"	1'-0"
4A83	4	#4	20'-0"	T1	0'-0"	1'-0"	1'-0"	1'-0"	1'-0"	1'-0"	1'-0"	1'-0"	1'-0"	1'-0"	1'-0"	1'-0"
4A85	4	#4	20'-0"	T1	0'-0"	1'-0"	1'-0"	1'-0"	1'-0"	1'-0"	1'-0"	1'-0"	1'-0"	1'-0"	1'-0"	1'-0"
4A87	4	#4	20'-0"	T1	0'-0"	1'-0"	1'-0"	1'-0"	1'-0"	1'-0"	1'-0"	1'-0"	1'-0"	1'-0"	1'-0"	1'-0"
4A89	4	#4	20'-0"	T1	0'-0"	1'-0"	1'-0"	1'-0"	1'-0"	1'-0"	1'-0"	1'-0"	1'-0"	1'-0"	1'-0"	1'-0"
4A91	4	#4	20'-0"	T1	0'-0"	1'-0"	1'-0"	1'-0"	1'-0"	1'-0"	1'-0"	1'-0"	1'-0"	1'-0"	1'-0"	1'-0"
4A93	4	#4	20'-0"	T1	0'-0"	1'-0"	1'-0"	1'-0"	1'-0"	1'-0"	1'-0"	1'-0"	1'-0"	1'-0"	1'-0"	1'-0"
4A95	4	#4	20'-0"	T1	0'-0"	1'-0"	1'-0"	1'-0"	1'-0"	1'-0"	1'-0"	1'-0"	1'-0"	1'-0"	1'-0"	1'-0"
4A97	4	#4	20'-0"	T1	0'-0"	1'-0"	1'-0"	1'-0"	1'-0"	1'-0"	1'-0"	1'-0"	1'-0"	1'-0"	1'-0"	1'-0"
4A99	4	#4	20'-0"	T1	0'-0"	1'-0"	1'-0"	1'-0"	1'-0"	1'-0"	1'-0"	1'-0"	1'-0"	1'-0"	1'-0"	1'-0"
4A01	4	#4	20'-0"	T1	0'-0"	1'-0"	1'-0"	1'-0"	1'-0"	1'-0"	1'-0"	1'-0"	1'-0"	1'-0"	1'-0"	1'-0"
4A03	4	#4	20'-0"	T1	0'-0"	1'-0"	1'-0"	1'-0"	1'-0"	1'-0"	1'-0"	1'-0"	1'-0"	1'-0"	1'-0"	1'-0"
4A05	4	#4	20'-0"	T1	0'-0"	1'-0"	1'-0"	1'-0"	1'-0"	1'-0"	1'-0"	1'-0"	1'-0"	1'-0"	1'-0"	1'-0"
4A07	4	#4	20'-0"	T1	0'-0"	1'-0"	1'-0"	1'-0"	1'-0"	1'-0"	1'-0"	1'-0"	1'-0"	1'-0"	1'-0"	1'-0"
4A09	4	#4	20'-0"	T1	0'-0"	1'-0"	1'-0"	1'-0"	1'-0"	1'-0"	1'-0"	1'-0"	1'-0"	1'-0"	1'-0"	1'-0"
4A11	4	#4	20'-0"	T1	0'-0"	1'-0"	1'-0"	1'-0"	1'-0"	1'-0"	1'-0"	1'-0"	1'-0"	1'-0"	1'-0"	1'-0"
4A13	4	#4	20'-0"	T1	0'-0"	1'-0"	1'-0"	1'-0"	1'-0"	1'-0"	1'-0"	1'-0"	1'-0"	1'-0"	1'-0"	1'-0"
4A15	4	#4	20'-0"	T1	0'-0"	1'-0"	1'-0"	1'-0"	1'-0"	1'-0"	1'-0"	1'-0"	1'-0"	1'-0"	1'-0"	1'-0"
4A17	4	#4	20'-0"	T1	0'-0"	1'-0"	1'-0"	1'-0"	1'-0"	1'-0"	1'-0"	1'-0"	1'-0"	1'-0"	1'-0"	1'-0"
4A19	4	#4	20'-0"	T1	0'-0"	1'-0"	1'-0"	1'-0"	1'-0"	1'-0"	1'-0"	1'-0"	1'-0"	1'-0"	1'-0"	1'-0"
4A21	4	#4	20'-0"	T1	0'-0"	1'-0"	1'-0"	1'-0"	1'-0"	1'-0"	1'-0"	1'-0"	1'-0"	1'-0"	1'-0"	1'-0"
4A23	4	#4	20'-0"	T1	0'-0"	1'-0"	1'-0"	1'-0"	1'-0"	1'-0"	1'-0"	1'-0"	1'-0"	1'-0"	1'-0"	1'-0"
4A25	4	#4	20'-0"	T1	0'-0"	1'-0"	1'-0"	1'-0"	1'-0"	1'-0"	1'-0"	1'-0"	1'-0"	1'-0"	1'-0"	1'-0"
4A27	4	#4	20'-0"	T1	0'-0"	1'-0"	1'-0"	1'-0"	1'-0"	1'-0"	1'-0"	1'-0"	1'-0"	1'-0"	1'-0"	1'-0"
4A29	4	#4	20'-0"	T1	0'-0"	1'-0"	1'-0"	1'-0"	1'-0"	1'-0"	1'-0"	1'-0"	1'-0"	1'-0"	1'-0"	1'-0"
4A31	4	#4	20'-0"	T1	0'-0"	1'-0"	1'-0"	1'-0"	1'-0"	1'-0"	1'-0"	1'-0"	1'-0"	1'-0"	1'-0"	1'-0"
4A33	4	#4	20'-0"	T1	0'-0"	1'-0"	1'-0"	1'-0"	1'-0"	1'-0"	1'-0"	1'-0"	1'-0"	1'-0"	1'-0"	1'-0"
4A35	4	#4	20'-0"	T1	0'-0"	1'-0"	1'-0"	1'-0"	1'-0"	1'-0"	1'-0"	1'-0"	1'-0"	1'-0"	1'-0"	1'-0"
4A37	4	#4	20'-0"	T1	0'-0"	1'-0"	1'-0"	1'-0"	1'-0"	1'-0"	1'-0"	1'-0"	1'-0"	1'-0"	1'-0"	1'-0"
4A39	4	#4	20'-0"	T1	0'-0"	1'-0"	1'-0"	1'-0"	1'-0"	1'-0"	1'-0"	1'-0"	1'-0"	1'-0"	1'-0"	1'-0"
4A41	4	#4	20'-0"	T1	0'-0"	1'-0"	1'-0"	1'-0"	1'-0"	1'-0"	1'-0"	1'-0"	1'-0"	1'-0"	1'-0"	1'-0"
4A43	4	#4	20'-0"	T1	0'-0"	1'-0"	1'-0"	1'-0"	1'-0"	1'-0"	1'-0"	1'-0"	1'-0"	1'-0"	1'-0"	1'-0"
4A45	4	#4	20'-0"	T1	0'-0"	1'-0"	1'-0"	1'-0"	1'-0"	1'-0"	1'-0"	1'-0"	1'-0"	1'-0"	1'-0"	1'-0"
4A47	4	#4	20'-0"	T1	0'-0"	1'-0"	1'-0"	1'-0"	1'-0"	1'-0"	1'-0"	1'-0"	1'-0"	1'-0"	1'-0"	1'-0"
4A49	4	#4	20'-0"	T1	0'-0"	1'-0"	1'-0"	1'-0"	1'-0"	1'-0"	1'-0"	1'-0"	1'-0"	1'-0"	1'-0"	1'-0"
4A51	4	#4	20'-0"	T1	0'-0"	1'-0"	1'-0"	1'-0"	1'-0"	1'-0"	1'-0"	1'-0"	1'-0"	1'-0"	1'-0"	1'-0"
4A53	4	#4	20'-0"	T1	0'-0"	1'-0"	1'-0"	1'-0"	1'-0"	1'-0"	1'-0"	1'-0"	1'-0"	1'-0"	1'-0"	1'-0"
4A55	4	#4	20'-0"	T1	0'-0"	1'-0"	1'-0"	1'-0"								