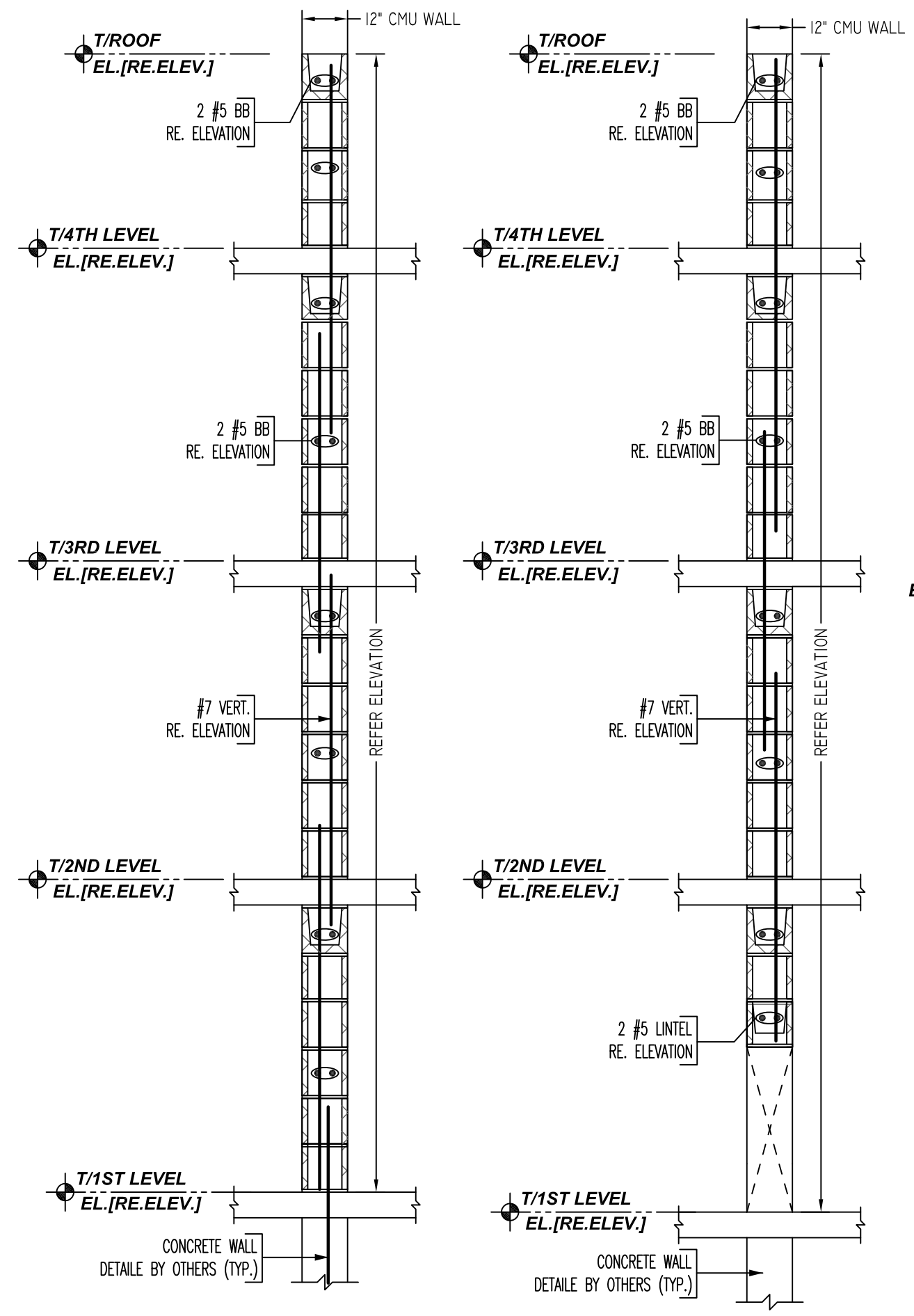
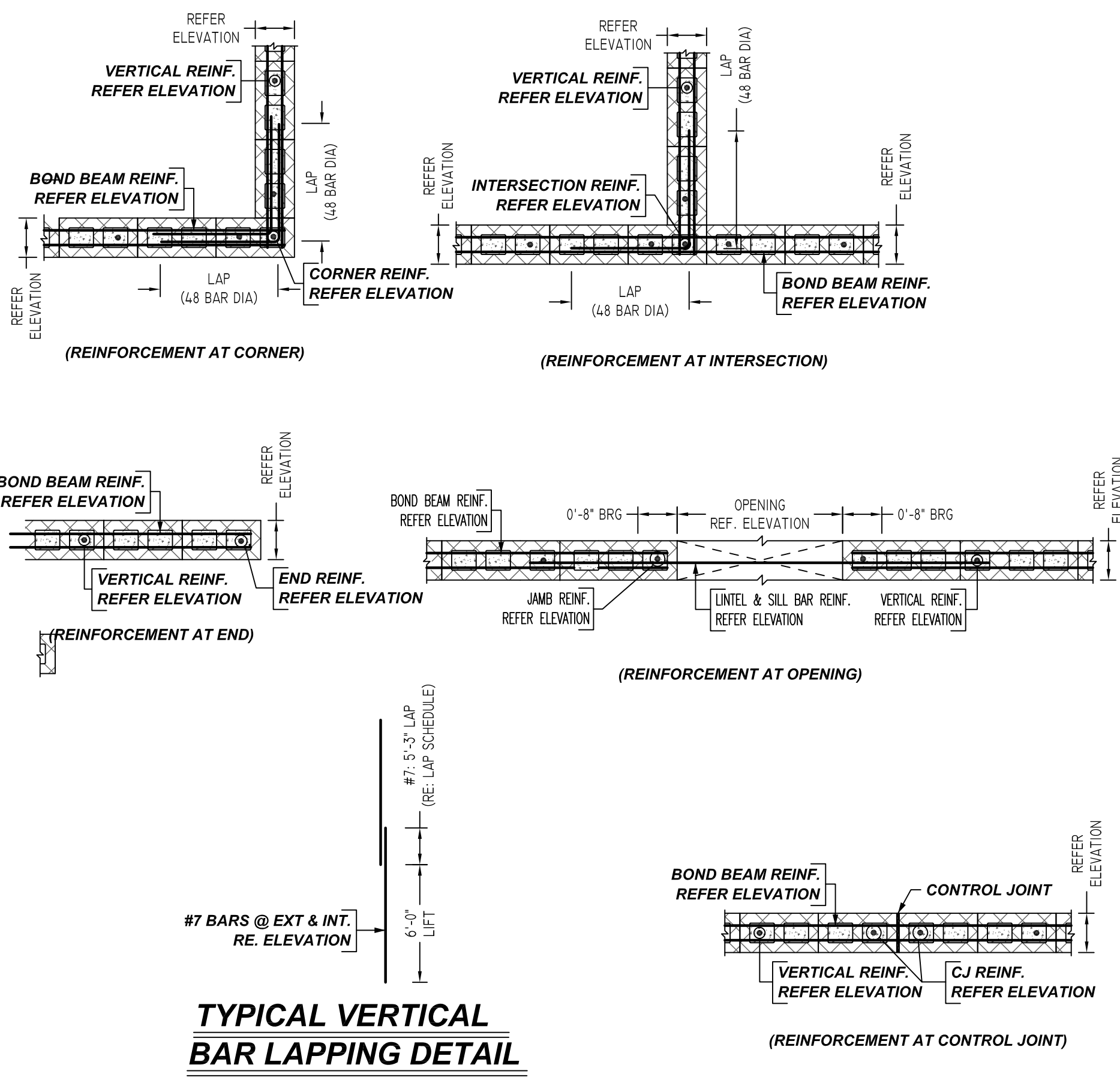


CMU WALL LAYOUT
REF: S10-1 & A10-1
SCALE: 1/8" = 1'-0"



TYPICAL CMU WALL SECTION DETAILS
SCALE: 1/2" = 1'-0"
REF: -



TYPICAL CMU WALL DETAILS
SCALE: 1/2" = 1'-0"
REF: -

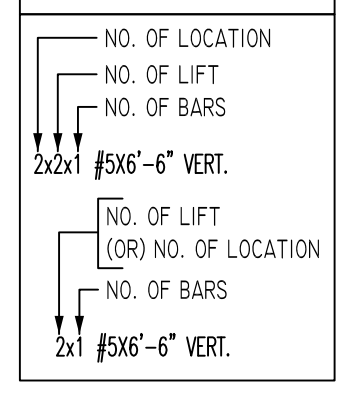
LAP SCHEDULE

Per ACI :318 (12.2.2)

| BAR# | LENGTHS | 48 x BAR DIA |
|------|---------|--------------|
| #3 | 1'-6" | |
| #4 | 2'-0" | |
| #5 | 2'-6" | |
| #6 | 4'-6" | |
| #7 | 5'-3" | |

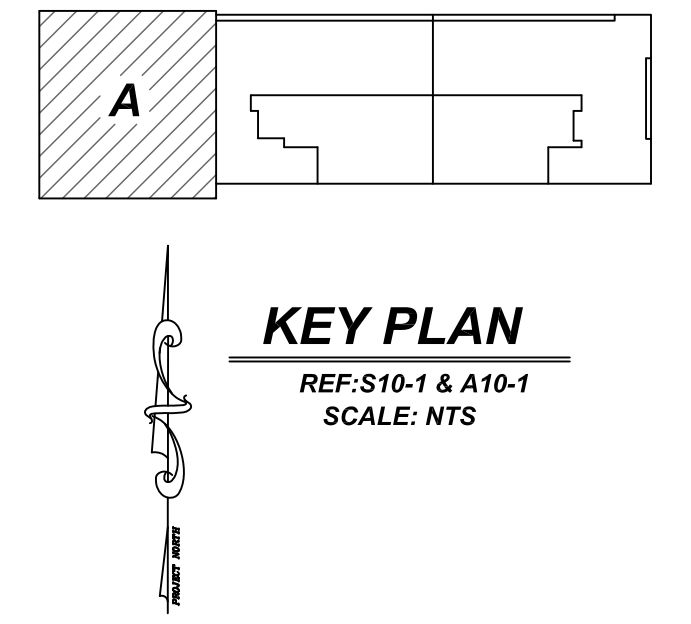
**ALL BARS IN THIS DRAWING
ASTM A615 GRADE 60
BLACK UNCOATED**

LEGEND



TYPICAL REINFORCING BAR CLEARANCE TABLE

| LOCATION | MIN. COVER |
|---------------|------------|
| CMU WALL TOP | 2" CLR |
| CMU WALL SIDE | 2" CLR |



REBAR GRADE 60 ASTM A-615

| SPLICES USED | | ABBREVIATIONS | | BAR MARK SIZE EQUIVALENT | |
|-----------------------|------------|---------------|----------------|--------------------------|-------------|
| CLASS B 4,000 psi UNO | | | | Imperial | Soft Metric |
| TOP BARS | OTHER BARS | ADD. | Additional | #3 | #10 |
| #3 | #3 | B.O.W. | Bottom of wall | #4 | #13 |
| #4 | #4 | C.B. | Corner Bars | #5 | #16 |
| #5 | #5 | DIAG. | Diagonal | #6 | #19 |
| #6 | #6 | D.O. | Door Opening | #7 | #22 |
| #7 | #7 | DWLS. | Dowels | #8 | #25 |
| #8 | #8 | E.F. | Each Face | #9 | #29 |
| #9 | #9 | E.S. | Each Side | #10 | #32 |
| #10 | #10 | E.W. | Each Way | #11 | #36 |
| #11 | #11 | FTG. | Footing | | |
| #14 | #14 | F.F. | Far Face | | |
| | | HORIZ. | Horizontal | | |
| | | I.F. | Inside Face | | |
| | | INTERS. | Intersection | | |
| | | L.W. | Long Way | | |
| | | N.F. | Near Face | | |
| | | O.F. | Outside Face | | |
| | | S.W. | Short Way | | |
| | | T&B | Top & Bottom | | |
| | | T.O.W. | Top of Wall | | |
| | | Trans. | Transverse | | |
| | | VERT. | Vertical | | |

TDB DEVELOPMENT
CMU WALL LAYOUT
WESTBROOK, MAINE

CUSTOMER: COASTAL MASONRY

DESIGNER: -

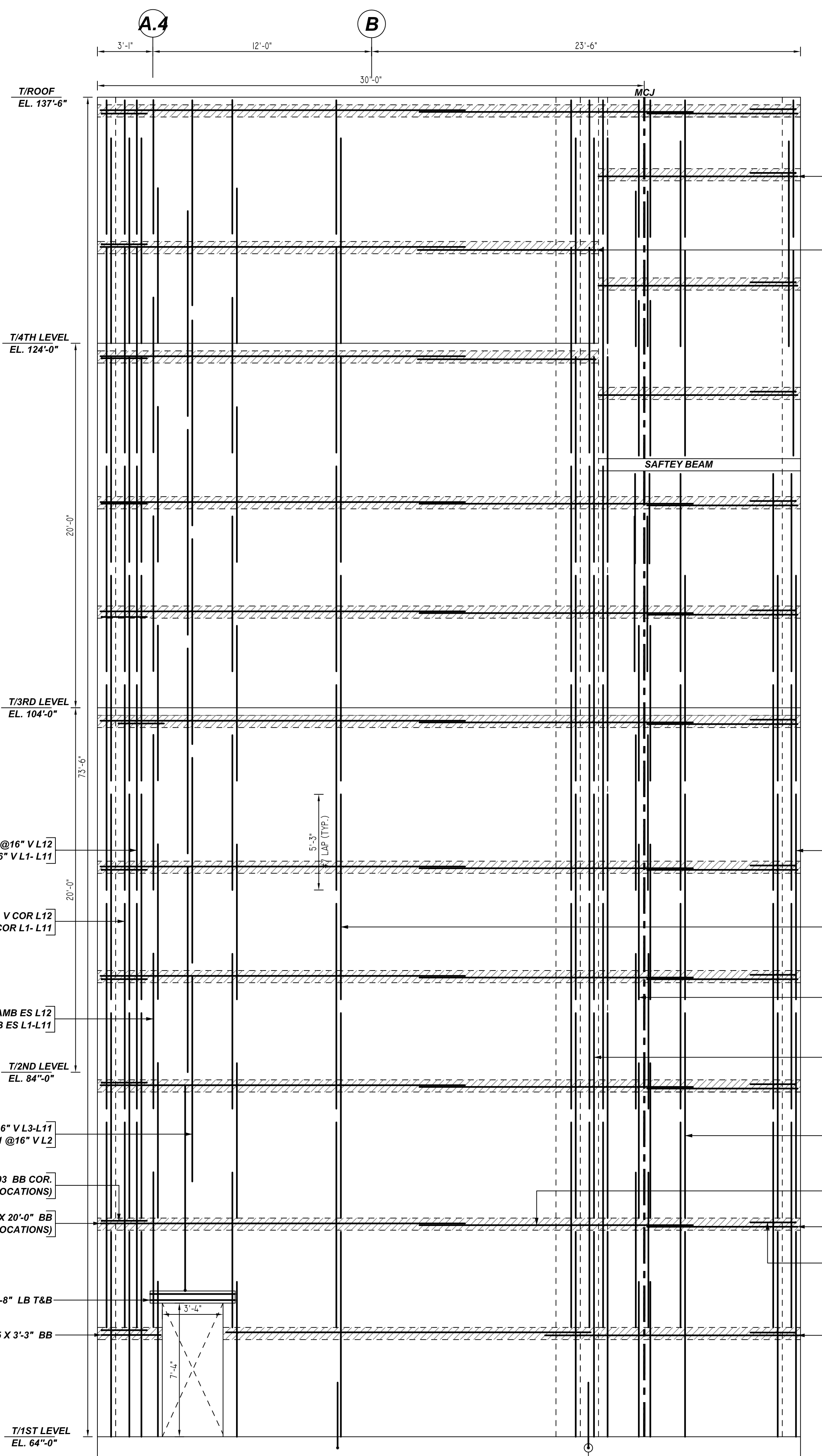
| REV NO | DATE | SENT FOR | REV NO | DATE | SENT FOR |
|--------|----------|----------|--------|------|----------|
| 0 | 07.04.22 | APPROVAL | | | |

| DRAWN BY | DATE | JOB NO | SHEET NO. |
|----------|----------|------------|-----------|
| JMS/MET | 07.04.22 | M92270553P | M01 |

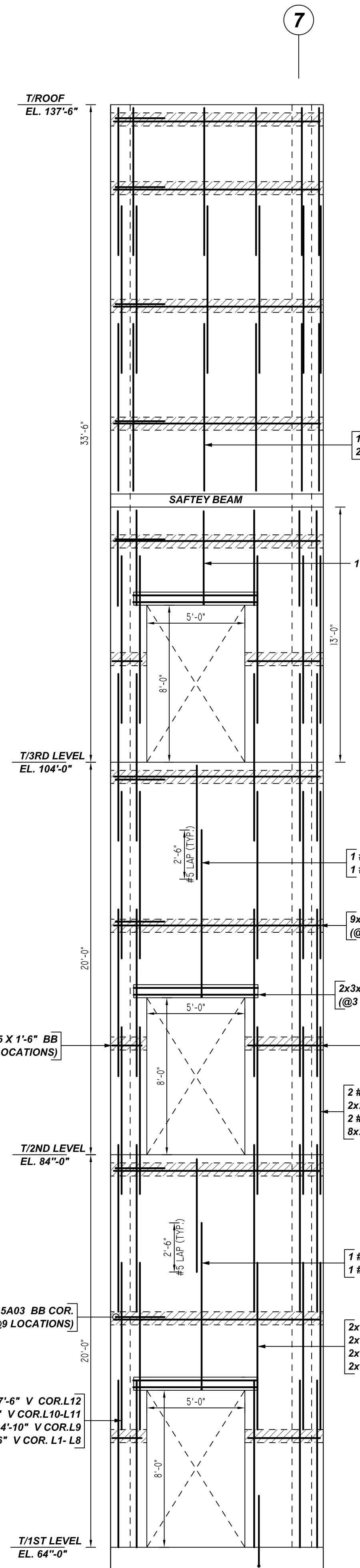
NOTICE

SHORTAGES, IMPROPER FABRICATION OR CLAIMS FOR ANY OTHER REASON MUST BE REPORTED TO THIS COMPANY WITHIN 10 DAYS FROM ORIGINAL DELIVERY. THIS COMPANY ALSO RESERVES THE RIGHT TO FIELD INSPECT MATERIALS PRIOR TO REPLACEMENT OR RECONDITIONING OF MATERIALS AND WILL NOT BE LIABLE FOR CHARGES FROM WORK DONE IN THE FIELD WITHOUT PRIOR AUTHORIZATION FROM THIS COMPANY.

REINFORCING STEEL PLACING DRAWING ONLY. USE IN CONJUNCTION WITH CONTRACT DRAWINGS & SPECIFICATIONS. ELEVATIONS & DIMENSIONS SHOWN ON DRAWING ARE FOR DETAILING PURPOSES ONLY AND SHOULD NOT BE USED FOR CONSTRUCTION UNLESS VERIFIED BY ENGINEER OR CONTRACTOR.

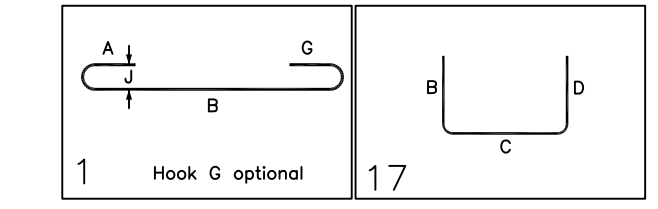


A ELEVATION
 REF: A10.1 & S60-01
 SCALE: 1/4" = 1'-0"



B ELEVATION
 REF: A10.1 & S60-01
 SCALE: 1/4" = 1'-0"

| Bar Mark | Qty | Size | Total Length | Type | X' | Y' | Z' | W' | V' | U' | T' | S' | R' | Q' | P' | O' | N' | M' | L' | K' | J' | I' | H' | G' | F' | E' | D' | C' | B' | A' |
|----------|-----|------|--------------|------|--------|--------|-------|----|----|----|----|----|----|----|----|----|----|----|----|----|----|----|----|----|----|----|----|----|----|----|
| 5A01 | 2 | #5 | 8'-11" | 1 | 0'-7" | 8'-6" | | | | | | | | | | | | | | | | | | | | | | | | |
| 5A02 | 1 | #5 | 5'-4" | 1 | 0'-7" | 4'-9" | | | | | | | | | | | | | | | | | | | | | | | | |
| 5A03 | 64 | #5 | 5'-0" | 17 | 0'-7" | 2'-6" | 2'-6" | | | | | | | | | | | | | | | | | | | | | | | |
| 7A01 | 2 | #7 | 12'-11" | 1 | 0'-10" | 11'-3" | | | | | | | | | | | | | | | | | | | | | | | | |



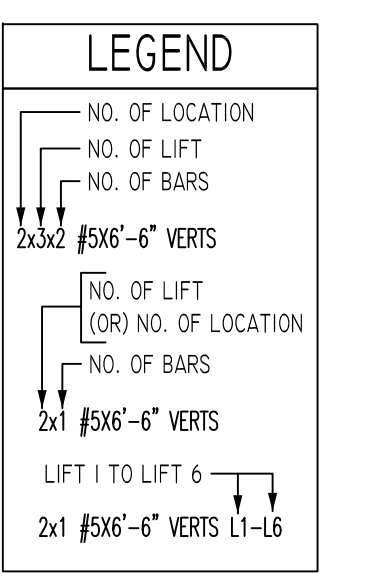
LAP SCHEDULE

Per ACI 318 (12.2.2)

| BAR# | LENGTHS | |
|------|--------------|------------|
| | 48 x BAR DIA | MIN. COVER |
| #3 | 1'-6" | 2" CLR |
| #4 | 2'-0" | 2" CLR |
| #5 | 2'-6" | |
| #6 | 4'-6" | |
| #7 | 5'-3" | |

| LOCATION | MIN. COVER |
|---------------|------------|
| CMU WALL SIDE | 2" CLR |
| CMU WALL TOP | 2" CLR |

**ALL BARS IN THIS DRAWING
 ASTM A615 GRADE 60
 BLACK UNCOATED**



REBAR GRADE 60 ASTM A-615

| SPLICES USED | | ABBREVIATIONS | | BAR MARK SIZE EQUIVALENT | |
|-----------------------|------------|---------------|----------------|--------------------------|-------------|
| CLASS B 4,000 psi UNO | | | | Imperial | Soft Metric |
| TOP BARS | OTHER BARS | ADD. | Additional | #3 | #10 |
| #3 | #3 | B.O.W. | Bottom of wall | #4 | #13 |
| #4 | #4 | C.B. | Corner Bars | #5 | #16 |
| #5 | #5 | DIAG. | Diagonal | #6 | #19 |
| #6 | #6 | D.O. | Door Opening | #7 | #22 |
| #7 | #7 | DWLS. | Dowels | #8 | #25 |
| #8 | #8 | E.F. | Each Face | #9 | #29 |
| #9 | #9 | E.S. | Each Side | #10 | #32 |
| #10 | #10 | E.W. | Each Way | #11 | #36 |
| #11 | #11 | FTG. | Footing | | |
| #14 | #14 | F.F. | Far Face | | |
| | | HORIZ. | Horizontal | | |
| | | I.F. | Inside Face | | |
| | | INTERS. | Intersection | | |
| | | L.W. | long Way | | |
| | | N.F. | Near Face | | |
| | | O.F. | Outside Face | | |
| | | S.W. | Short Way | | |
| | | T&B | Top & Bottom | | |
| | | T.O.W. | Top of Wall | | |
| | | Trans. | Transverse | | |
| | | VERT. | Vertical | | |

TDB DEVELOPMENT
 CMU WALL REINFORCEMENT DETAILS
WESTBROOK, MAINE

CUSTOMER: COASTAL MASONRY
 DESIGNER: -

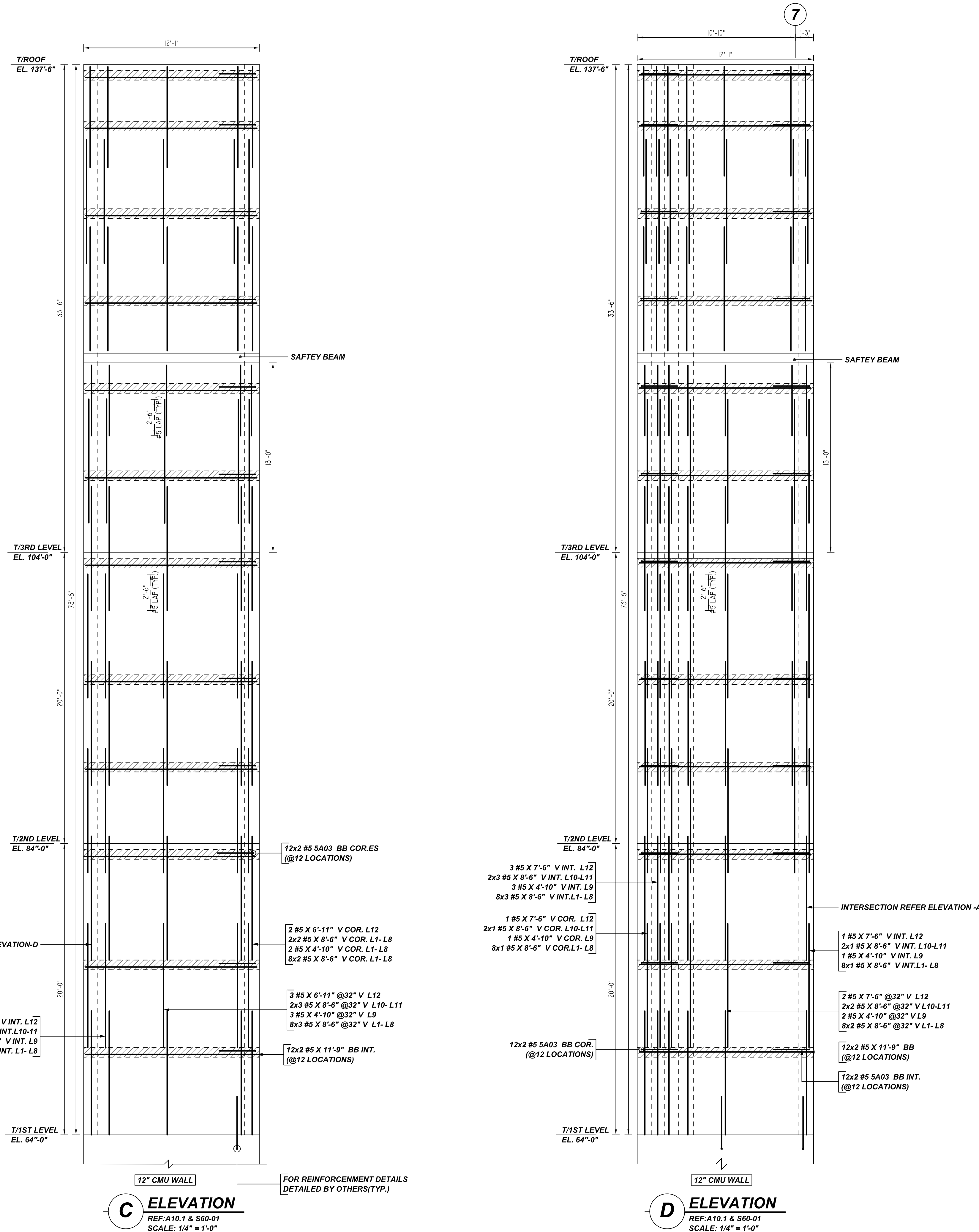
| REV NO | DATE | SENT FOR | REV NO | DATE | SENT FOR |
|--------|----------|----------|--------|------|----------|
| 0 | 07.04.22 | APPROVAL | | | |

| DRAWN BY | DATE | JOB NO | SHEET NO. |
|----------|----------|------------|-----------|
| JMS/MET | 07.04.22 | M92270553P | M02 |

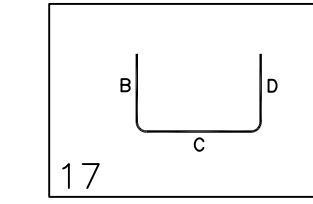
NOTICE

SHORTAGES, IMPROPER FABRICATION OR CLAIMS FOR ANY OTHER REASON MUST BE REPORTED TO THIS COMPANY WITHIN 10 DAYS FROM ORIGINAL DELIVERY. THIS COMPANY ALSO RESERVES THE RIGHT TO FIELD INSPECT MATERIALS PRIOR TO REPLACEMENT OR RECONDITIONING OF MATERIALS AND WILL NOT BE LIABLE FOR CHARGES FROM WORK DONE IN THE FIELD WITHOUT PRIOR AUTHORIZATION FROM THIS COMPANY.

REINFORCING STEEL PLACING DRAWING ONLY. USE IN CONJUNCTION WITH CONTRACT DRAWINGS & SPECIFICATIONS. ELEVATIONS & DIMENSIONS SHOWN ON DRAWING ARE FOR DETAILING PURPOSES ONLY AND SHOULD NOT BE USED FOR CONSTRUCTION UNLESS VERIFIED BY ENGINEER OR CONTRACTOR.



| Bar Mark | Qty | Size | Total Length | Type | X | Y | Z | W | V | U | T | S | R | Q | P | O | N | M | L | K | J | I | H | G | F | E | D | C | B | A |
|----------|-----|------|--------------|------|---|---|---|---|---|---|---|---|---|---|---|---|---|---|---|---|---|---|---|---|---|---|---|---|---|---|
| 5A03 | 72 | #5 | 5'-0" | 17 | | | | | | | | | | | | | | | | | | | | | | | | | | |



LAP SCHEDULE

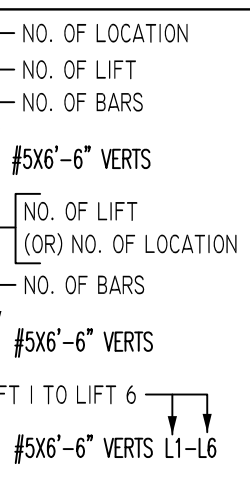
Per ACI :318 (12.2.2)

| BAR# | LENGTHS |
|------|---------|
| #3 | 1'-6" |
| #4 | 2'-0" |
| #5 | 2'-6" |
| #6 | 4'-6" |
| #7 | 5'-3" |

| TYPICAL REINFORCING BAR CLEARANCE TABLE | |
|---|------------|
| LOCATION | MIN. COVER |
| CMU WALL SIDE | 2" CLR |
| CMU WALL TOP | 2" CLR |

**ALL BARS IN THIS DRAWING
ASTM A615 GRADE 60
BLACK UNCOATED**

LEGEND



REBAR GRADE 60 ASTM A-615

| SPLICES USED | | ABBREVIATIONS | | BAR MARK SIZE EQUIVALENT | |
|-----------------------|------------|-------------------------|--|--------------------------|-------------|
| CLASS B 4,000 psi UNO | | | | Imperial | Soft Metric |
| TOP BARS | OTHER BARS | ADD. = Additional | | #3 | #10 |
| #3 - | #3 - | B.O.W. = Bottom of wall | | #4 | #13 |
| #4 - | #4 - | C.B. = Corner Bars | | #5 | #16 |
| #5 - | #5 - | DIAG. = Diagonal | | #6 | #19 |
| #6 - | #6 - | D.O. = Door Opening | | #7 | #22 |
| #7 - | #7 - | DWLS. = Dowels | | #8 | #25 |
| #8 - | #8 - | E.F. = Each Face | | #9 | #29 |
| #9 - | #9 - | E.S. = Each Side | | #10 | #32 |
| #10 - | #10 - | E.W. = Each Way | | #11 | #36 |
| #11 - | #11 - | FTG. = Footing | | | |
| #14 - | #14 - | F.F. = Far Face | | | |
| | | HORIZ. = Horizontal | | | |
| | | I.F. = Inside Face | | | |
| | | INTERS. = Intersection | | | |
| | | L.W. = long Way | | | |
| | | N.F. = Near Face | | | |
| | | O.F. = Outside Face | | | |
| | | S.W. = Short Way | | | |
| | | T&B = Top & Bottom | | | |
| | | T.O.W. = Top of Wall | | | |
| | | Trans. = Transverse | | | |
| | | VERT. = Vertical | | | |

TDB DEVELOPMENT CMU WALL REINFORCEMENT DETAILS WESTBROOK, MAINE

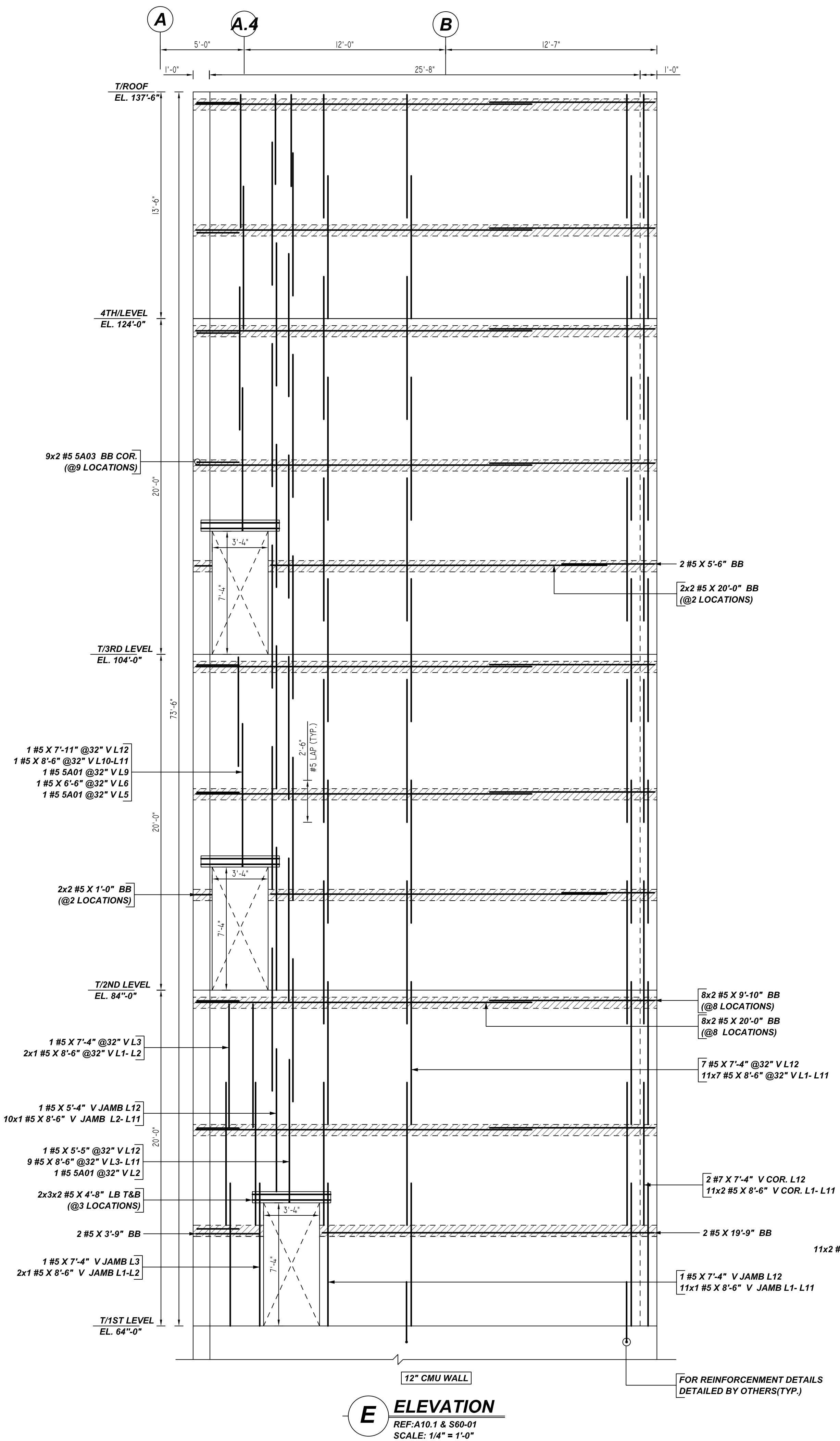
CUSTOMER: COASTAL MASONRY
DESIGNER: -

| REV NO | DATE | SENT FOR | REV NO | DATE | SENT FOR | JMS/MET | DATE | JOB NO | SHEET NO. |
|--------|----------|----------|--------|------|----------|---------|----------|------------|-----------|
| 0 | 07.04.22 | APPROVAL | | | | | 07.04.22 | M92270553P | M03 |

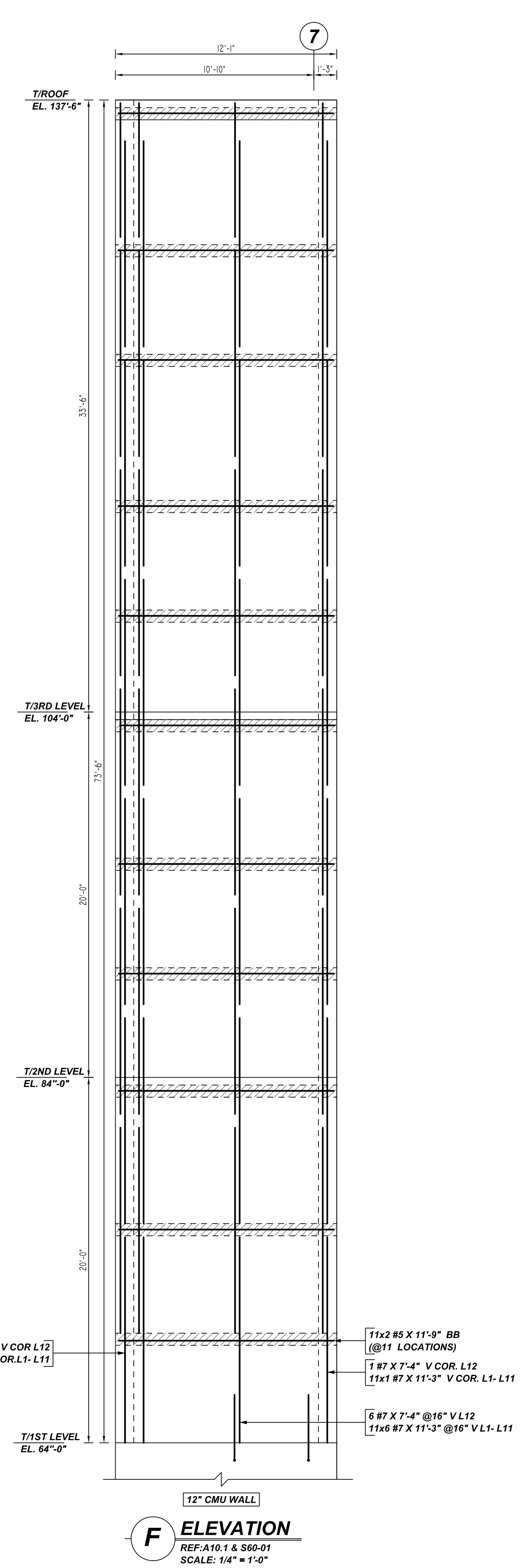
NOTICE

SHORTAGES, IMPROPER FABRICATION OR CLAIMS FOR ANY OTHER REASON MUST BE REPORTED TO THIS COMPANY WITHIN 10 DAYS FROM ORIGINAL DELIVERY. THIS COMPANY ALSO RESERVES THE RIGHT TO FIELD INSPECT MATERIALS PRIOR TO REPLACEMENT OR RECONDITIONING OF MATERIALS AND WILL NOT BE LIABLE FOR CHARGES FROM WORK DONE IN THE FIELD WITHOUT PRIOR AUTHORIZATION FROM THIS COMPANY.

REINFORCING STEEL PLACING DRAWING ONLY. USE IN CONJUNCTION WITH CONTRACT DRAWINGS & SPECIFICATIONS. ELEVATIONS & DIMENSIONS SHOWN ON DRAWING ARE FOR DETAILING PURPOSES ONLY AND SHOULD NOT BE USED FOR CONSTRUCTION UNLESS VERIFIED BY ENGINEER OR CONTRACTOR.



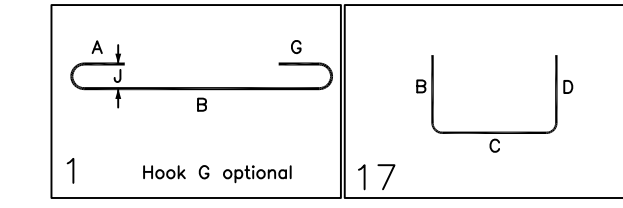
E ELEVATION
REF: A10.1 & S60-01
SCALE: 1/4" = 1'-0"



F ELEVATION
REF: A10.1 & S60-01
SCALE: 1/4" = 1'-0"

Release Number: M04

| Bar Mark | Qty | Size | Total Length | Type | X' | Y' | Z' | W' | V' | U' | T' | S' | R' | Q' | P' | O' | N' | M' | L' | K' | J' | I' | H' | G' | F' | E' | D' | C' | B' | A' |
|----------|-----|------|--------------|------|-------|-------|-------|----|----|----|----|----|----|----|----|----|----|----|----|----|----|----|----|----|----|----|----|----|----|----|
| SA01 | 3 | #5 | 9'-11" | 1 | 0'-7" | 8'-6" | | | | | | | | | | | | | | | | | | | | | | | | |
| SA03 | 18 | #5 | 5'-0" | 17 | 0'-7" | 2'-6" | 2'-6" | | | | | | | | | | | | | | | | | | | | | | | |



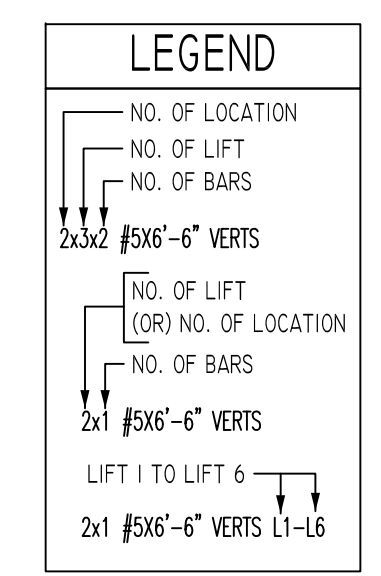
LAP SCHEDULE

Per ACI :318 (12.2.2)

| BAR# | LENGTHS |
|------|---------|
| #3 | 1'-6" |
| #4 | 2'-0" |
| #5 | 2'-6" |
| #6 | 4'-6" |
| #7 | 5'-3" |

| TYPICAL REINFORCING BAR CLEARANCE TABLE | |
|---|------------|
| LOCATION | MIN. COVER |
| CMU WALL SIDE | 2" CLR |
| CMU WALL TOP | 2" CLR |

**ALL BARS IN THIS DRAWING
ASTM A615 GRADE 60
BLACK UNCOATED**



| REBAR GRADE 60 ASTM A-615 | | |
|---------------------------|------------|--|
| SPLICES USED | | |
| CLASS B 4,000 psi UNO | | |
| TOP BARS | OTHER BARS | |
| #3 - | #3 - | |
| #4 - | #4 - | |
| #5 - | #5 - | |
| #6 - | #6 - | |
| #7 - | #7 - | |
| #8 - | #8 - | |
| #9 - | #9 - | |
| #10 - | #10 - | |
| #11 - | #11 - | |
| #14 - | #14 - | |

| ABBREVIATIONS | |
|---------------|------------------|
| ADD. | = Additional |
| B.O.W. | = Bottom of wall |
| C.B. | = Corner Bars |
| DIAG. | = Diagonal |
| D.O. | = Door Opening |
| DWLS. | = Dowels |
| E.F. | = Each Face |
| E.S. | = Each Side |
| E.W. | = Each Way |
| FTG. | = Footing |
| F.F. | = Far Face |
| HORIZ. | = Horizontal |
| I.F. | = Inside Face |
| INTERS. | = Intersection |
| L.W. | = long Way |
| N.F. | = Near Face |
| O.F. | = Outside Face |
| S.W. | = Short Way |
| T&B | = Top & Bottom |
| T.O.W. | = Top of Wall |
| Trans. | = Transverse |
| VERT. | = Vertical |

| BAR MARK SIZE EQUIVALENT | |
|--------------------------|-------------|
| Imperial | Soft Metric |
| #3 | #10 |
| #4 | #13 |
| #5 | #16 |
| #6 | #19 |
| #7 | #22 |
| #8 | #25 |
| #9 | #29 |
| #10 | #32 |
| #11 | #36 |

TDB DEVELOPMENT
CMU WALL REINFORCEMENT DETAILS
WESTBROOK, MAINE

CUSTOMER: COASTAL MASONRY
DESIGNER: -

| | | | | | |
|--------|----------|----------|--------|------|----------|
| 0 | 07.04.22 | APPROVAL | | | |
| REV NO | DATE | SENT FOR | REV NO | DATE | SENT FOR |

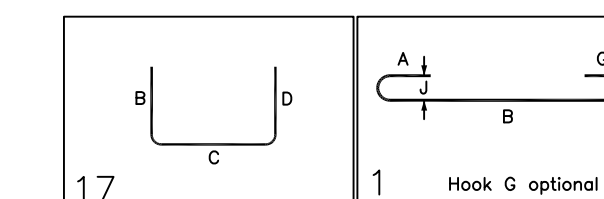
| | | | |
|----------|----------|------------|-----------|
| DRAWN BY | DATE | JOB NO | SHEET NO. |
| JMS/MET | 07.04.22 | M92270553P | M04 |

NOTICE

SHORTAGES, IMPROPER FABRICATION OR CLAIMS FOR ANY OTHER REASON MUST BE REPORTED TO THIS COMPANY WITHIN 10 DAYS FROM ORIGINAL DELIVERY. THIS COMPANY ALSO RESERVES THE RIGHT TO FIELD INSPECT MATERIALS PRIOR TO REPLACEMENT OR RECONDITIONING OF MATERIALS AND WILL NOT BE LIABLE FOR CHARGES FROM WORK DONE IN THE FIELD WITHOUT PRIOR AUTHORIZATION FROM THIS COMPANY.

REINFORCING STEEL PLACING DRAWING ONLY. USE IN CONJUNCTION WITH CONTRACT DRAWINGS & SPECIFICATIONS. ELEVATIONS & DIMENSIONS SHOWN ON DRAWING ARE FOR DETAILING PURPOSES ONLY AND SHOULD NOT BE USED FOR CONSTRUCTION UNLESS VERIFIED BY ENGINEER OR CONTRACTOR.

| Bar Mark | Qty | Size | Total Length | Type | X' | Y' | Z' | BENDING DETAILS | | | | | | | | | | | | |
|----------|-----|------|--------------|------|----|----|----|-----------------|--|--|--|--|--|--|--|--|--|--|--|--|
| 5A03 | 44 | #5 | 5'-0" | L1 | | | | | | | | | | | | | | | | |
| 7A01 | 6 | #7 | 12'-1" | L1 | | | | | | | | | | | | | | | | |



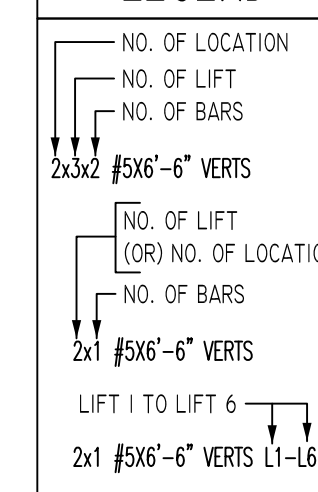
LAP SCHEDULE

Per ACI 318 (12.2.2)

| BAR# | LENGTHS | MIN. COVER | |
|------|--------------|---------------|--------------|
| | | CMU WALL SIDE | CMU WALL TOP |
| #3 | 48 x BAR DIA | 2" CLR | 2" CLR |
| #4 | 2'-0" | | |
| #5 | 2'-6" | | |
| #6 | 4'-6" | | |
| #7 | 5'-3" | | |

**ALL BARS IN THIS DRAWING
ASTM A615 GRADE 60
BLACK UNCOATED**

LEGEND



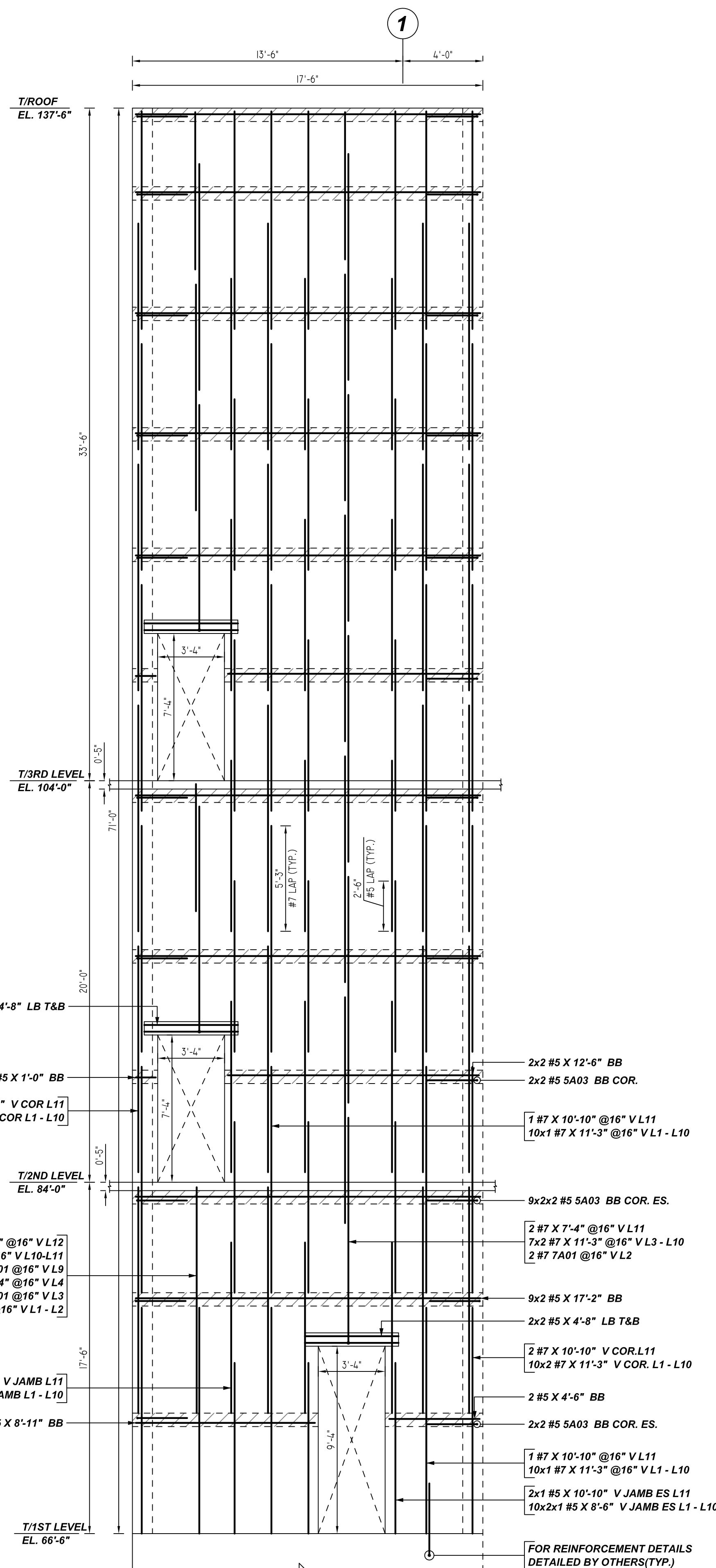
REBAR GRADE 60 ASTM A-615

| SPLICES USED | | ABBREVIATIONS | | BAR MARK SIZE EQUIVALENT | |
|-----------------------|------------|-------------------------|------------------------|--------------------------|-------------|
| CLASS B 4,000 psi UNO | | | | Imperial | Soft Metric |
| TOP BARS | OTHER BARS | ADD. = Additional | D.W.L.S. = Dowels | #3 | #10 |
| #3 - | #3 - | B.O.W. = Bottom of wall | D.O. = Door Opening | #4 | #13 |
| #4 - | #4 - | C.B. = Corner Bars | E.F. = Each Face | #5 | #16 |
| #5 - | #5 - | DIAG. = Diagonal | E.S. = Each Side | #6 | #19 |
| #6 - | #6 - | D.O. = Diagonal | E.W. = Each Way | #7 | #22 |
| #7 - | #7 - | D.W.L.S. = Dowels | F.F. = Far Face | #8 | #25 |
| #8 - | #8 - | D.O. = Door Opening | HORIZ. = Horizontal | #9 | #29 |
| #9 - | #9 - | E.F. = Each Face | I.F. = Inside Face | #10 | #32 |
| #10 - | #10 - | E.S. = Each Side | INTERS. = Intersection | #11 | #36 |
| #11 - | #11 - | E.W. = Each Way | L.W. = long Way | | |
| #14 - | #14 - | F.F. = Far Face | N.F. = Near Face | | |
| | | HORIZ. = Horizontal | O.F. = Outside Face | | |
| | | I.F. = Inside Face | S.W. = Short Way | | |
| | | INTERS. = Intersection | T&B = Top & Bottom | | |
| | | L.W. = long Way | T.O.W. = Top of Wall | | |
| | | N.F. = Near Face | Trans. = Transverse | | |
| | | O.F. = Outside Face | VERT. = Vertical | | |
| | | S.W. = Short Way | | | |
| | | T&B = Top & Bottom | | | |
| | | T.O.W. = Top of Wall | | | |
| | | Trans. = Transverse | | | |
| | | VERT. = Vertical | | | |

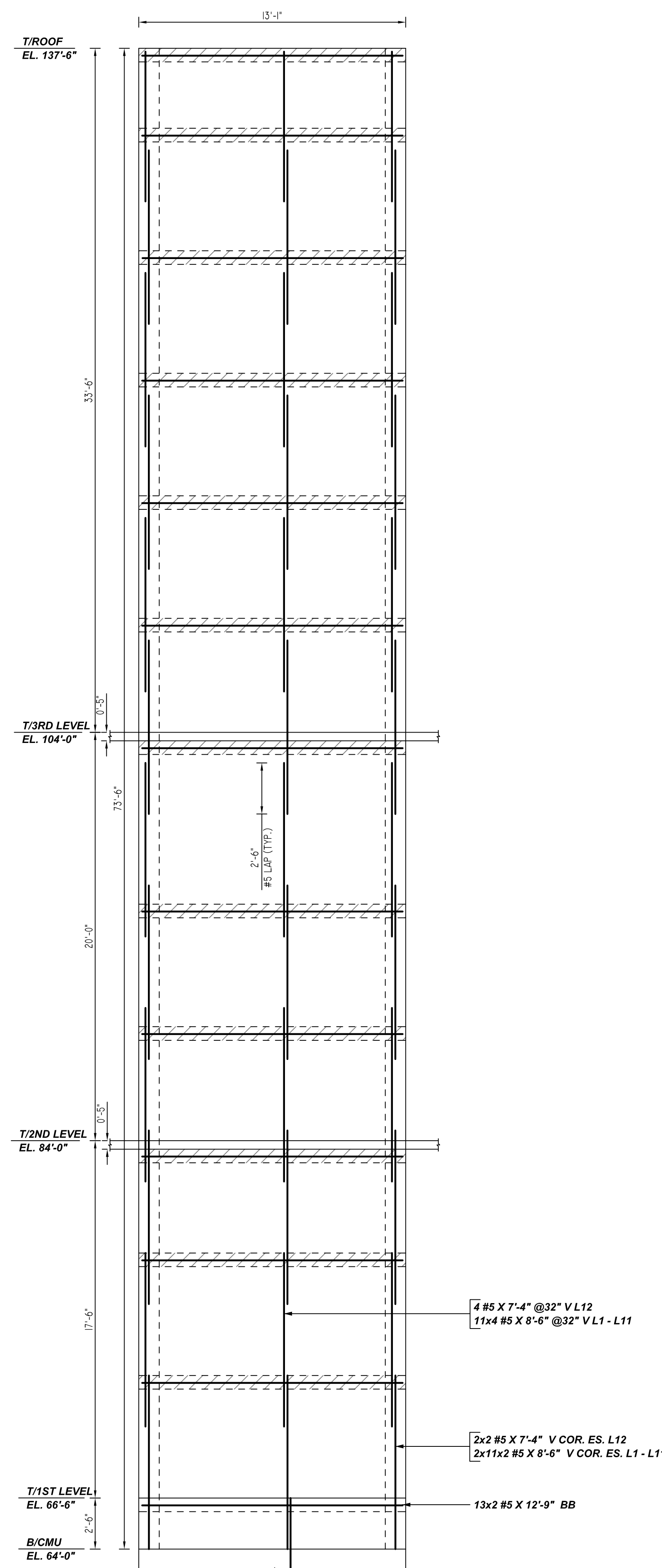
TDB DEVELOPMENT CMU WALL REINFORCEMENT DETAILS WESTBROOK, MAINE

| | | | |
|---------------------------|----------|-------------|-----------|
| CUSTOMER: COASTAL MASONRY | | DESIGNER: - | |
| DRAWN BY | DATE | JOB NO | SHEET NO. |
| JMS/MET | 07.04.22 | M92270553P | M05 |

| REV NO | DATE | SENT FOR | REV NO | DATE | SENT FOR |
|--------|----------|----------|--------|------|----------|
| 0 | 07.04.22 | APPROVAL | | | |



G ELEVATION
REF: A10.1 & S60-01
SCALE: 1/4" = 1'-0"



H ELEVATION
REF: A10.1 & S60-01
SCALE: 1/4" = 1'-0"

