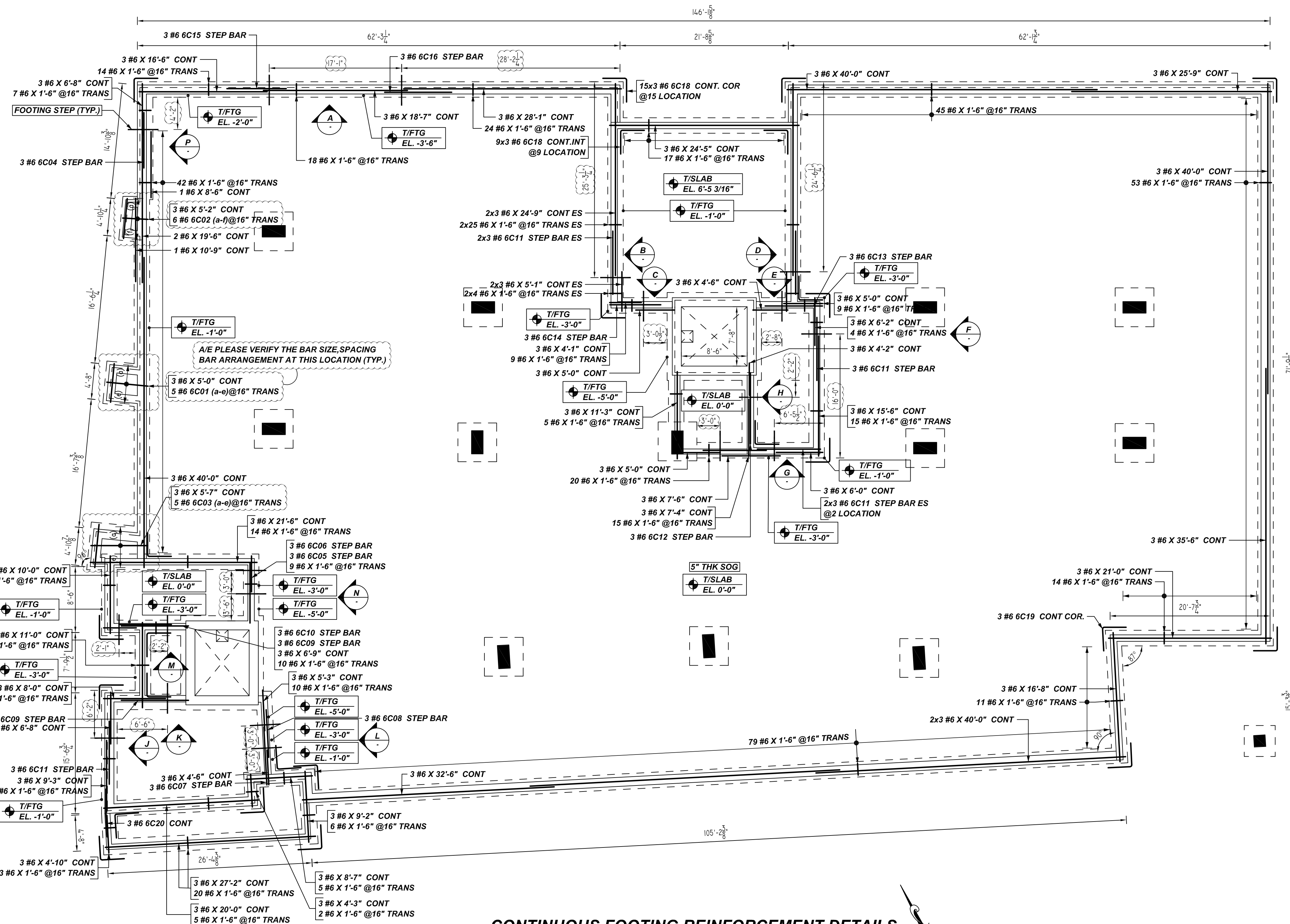


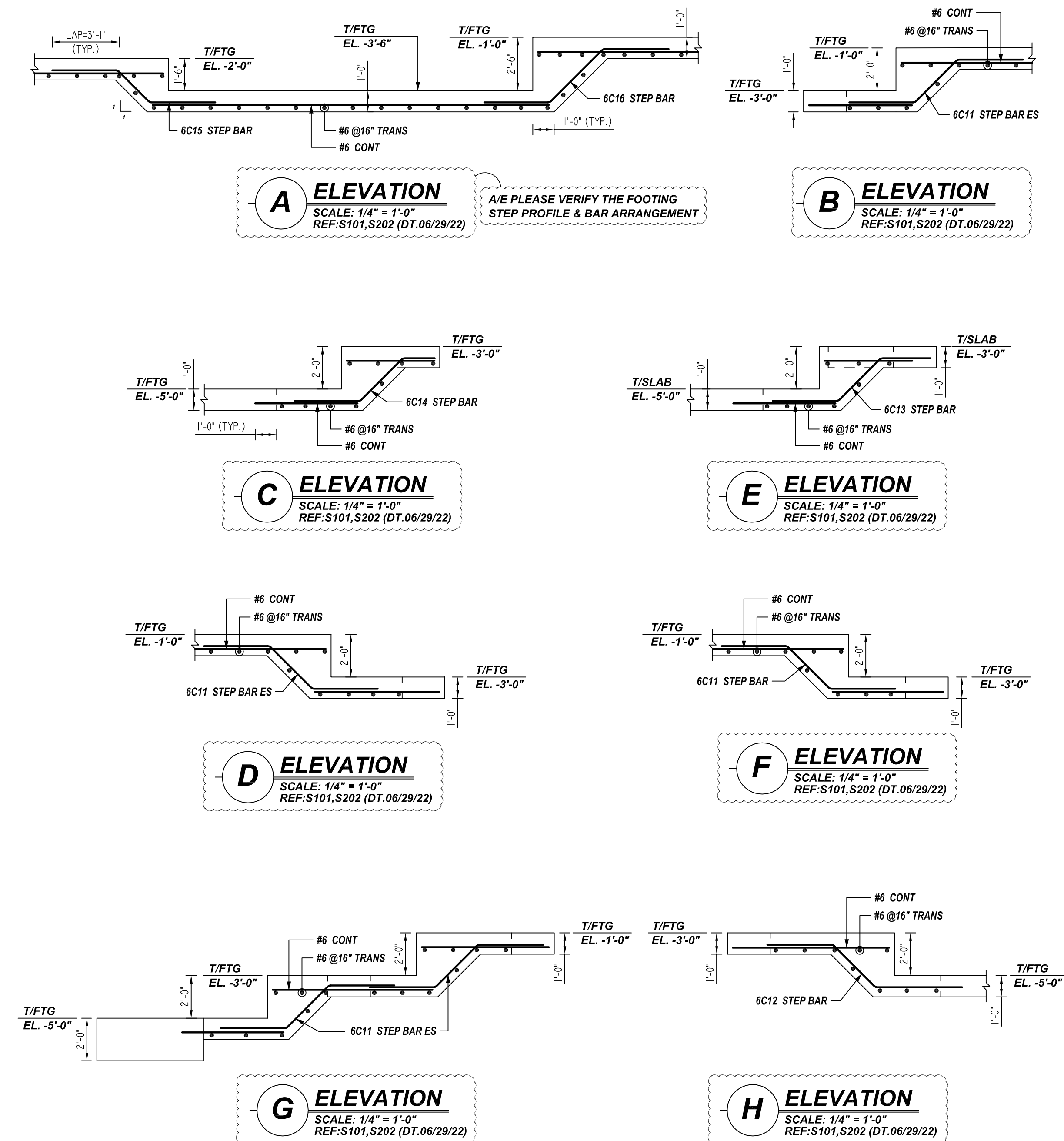
NOTICE

SHORTAGES, IMPROPER FABRICATION OR CLAIMS FOR ANY OTHER REASON MUST BE REPORTED TO THIS COMPANY WITHIN 10 DAYS FROM ORIGINAL DELIVERY. THIS COMPANY ALSO RESERVES THE RIGHT TO FIELD INSPECT MATERIALS PRIOR TO REPLACEMENT OR RECONDITIONING OF MATERIALS AND WILL NOT BE LIABLE FOR CHARGES FROM WORK DONE IN THE FIELD WITHOUT PRIOR AUTHORIZATION FROM THIS COMPANY.

REINFORCING STEEL PLACING DRAWING ONLY USE IN CONJUNCTION WITH CONTRACT DRAWINGS & SPECIFICATIONS. ELEVATIONS & DIMENSIONS SHOWN ON DRAWING ARE FOR DETAILING PURPOSES ONLY AND SHOULD NOT BE USED FOR CONSTRUCTION UNLESS VERIFIED BY ENGINEER OR CONTRACTOR.

**CONTINUOUS FOOTING REINFORCEMENT DETAILS**

SCALE: 1/8" = 1'-0"
REF: S101, S202 (DT.06/29/22)



Bar Mark	Qty	Size	Total Length	Type	X	Y	Z	W	V	U	T	S	R	Q	P	O	N	M	L	K	J	I	H	G	F	E	D	C	B	A						
6001a	1	#6	5'-11"																																	
6001b	1	#6	5'-7"																																	
6002a	1	#6	3'-6"																																	
6002b	1	#6	7'-1"																																	
6003a	1	#6	7'-1"																																	
6003b	1	#6	7'-1"																																	
6004	3	#6	7'-7"	3	7'-7"																															
6005	3	#6	8'-4"	3	1'-0"	2'-10"																														
6006	3	#6	5'-8"	3	3'-7"	2'-1"																														
6007	3	#6	8'-4"	3	1'-10"	2'-10"	3'-7"																													
6008	3	#6	7'-0"	3	1'-1"	2'-10"	3'-7"																													
6009	6	#6	9'-7"	3	3'-1"	2'-10"	3'-7"																													
6010	3	#6	5'-5"	3	3'-1"	2'-2"																														
6011	18	#6	9'-0"	3	3'-1"	2'-10"	3'-1"																													
6012	3	#6	10'-0"	3	3'-1"	2'-10"	4'-1"																													
6013	3	#6	8'-5"	3	2'-4"	2'-10"	3'-1"																													
6014	3	#6	7'-5"	3	1'-4"	2'-10"	3'-1"																													
6015	3	#6	8'-4"	3	3'-1"	2'-2"																														
6016	3	#6	9'-8"	3	3'-1"	3'-8"	3'-1"																													
6018	72	#6	6'-2"	17	3'-1"	3'-1"																														
6019	3	#6	6'-2"	7	3'-1"	3'-1"																														
6020	3	#6	6'-2"	3	3'-1"	3'-1"																														

LAP SCHEDULE

4000 PSI (CLASS-B) CASE - 1
Per ACI:318 (12.2.2)

BAR#	LENGTHS	
	TOP	OTHERS
#3	2'-0"	1'-7"
#4	2'-8"	2'-4"
#5	3'-4"	2'-7"
#6	4'-0"	3'-1"
#7	5'-10"	4'-6"
#8	6'-8"	5'-2"

TYPICAL REINFORCING BAR CLEARANCE TABLE

LOCATION	MIN. COVER
FOOTING SIDE & BOTTOM	3" CLR
WALL SIDE	2" CLR

**ALL BARS IN THIS DRAWING
ASTM A615 GRADE 60
BLACK UNCOATED**

REBAR GRADE 60 ASTM A-615**SPLICES USED****CLASS B 4,000 psi UNO**

TOP BARS	OTHER BARS
#3	#3
#4	#4
#5	#5
#6	#6
#7	#7
#8	#8
#9	#9
#10	#10
#11	#11
#14	#14

ABBREVIATIONS

ADD.	= Additional
B.O.W.	= Bottom of wall
C.B.	= Corner Bars
DIAG.	= Diagonal
D.O.	= Door Opening
DWLS.	= Dowels
E.F.	= Each Face
E.S.	= Each Side
E.W.	= Each Way
FTG.	= Footing
F.F.	= Far Face
HORIZ.	= Horizontal
I.F.	= Inside Face
INTERS.	= Intersection
L.W.	= long Way
N.F.	= Near Face
O.F.	= Outside Face
S.W.	= Short Way
T&B	= Top & Bottom
T.O.W.	= Top of Wall
Trans.	= Transverse
VERT.	= Vertical

BAR MARK SIZE EQUIVALENT

Imperial	Soft Metric
#3	#10
#4	#13
#5	#16
#6	#19
#7	#22
#8	#25
#9	#29
#10	#32
#11	#36

LIBERTY PARK 48 UNITS
CONTINUOUS FOOTING REINFORCEMENT DETAILS
UNION CITY, NJ

CUSTOMER: TORRES ATENO

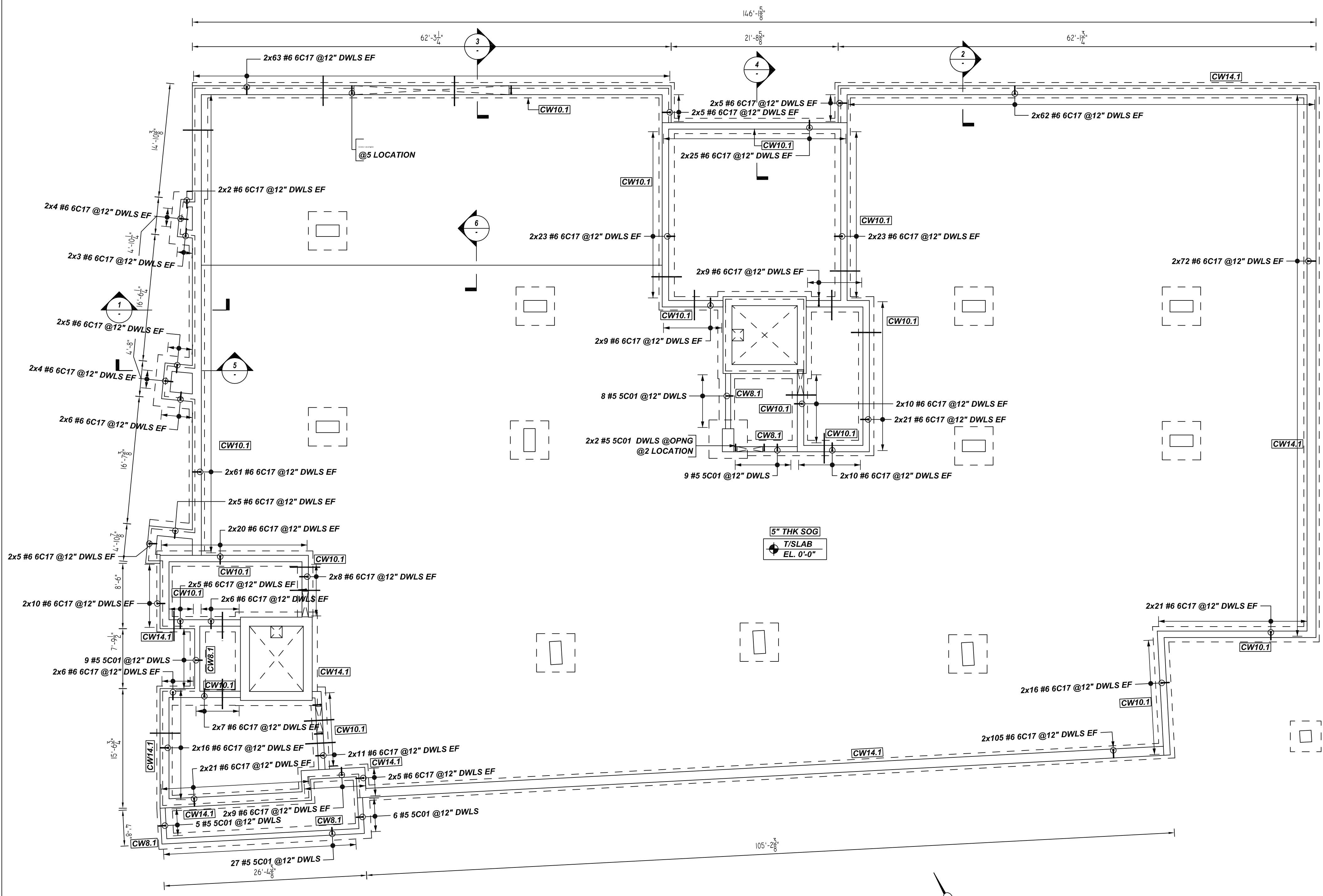
DESIGNER: JT ENGINEERING

REV NO	DATE	APPROVAL	SENT FOR	REV NO	DATE	SENT FOR
0	08.01.22					

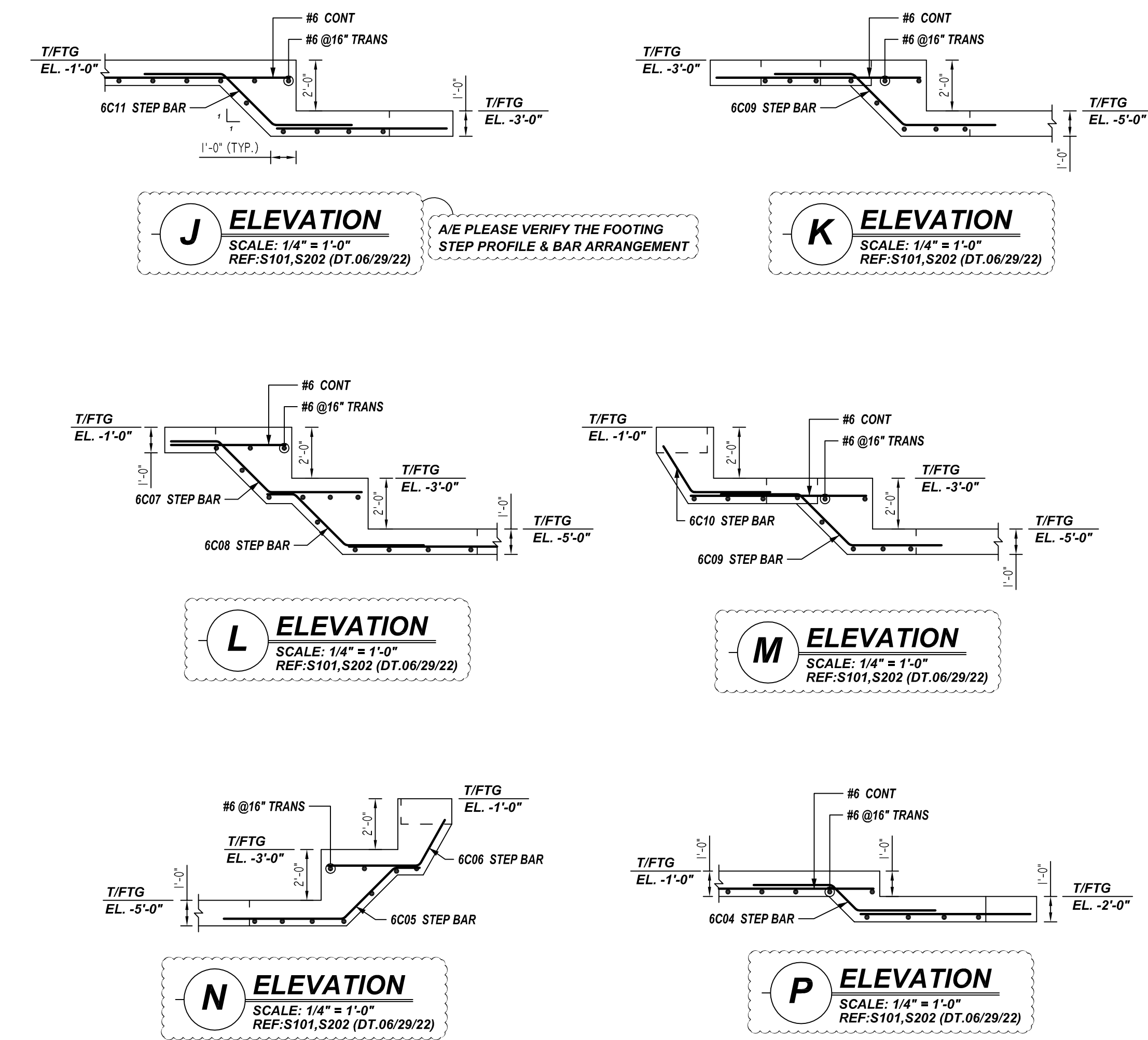
DRAWN BY	DATE	JOB NO	SHEET NO.
RTP/SS	08.01.22	M92270614P	R04

NOTICE
 SHORTAGES, IMPROPER FABRICATION OR CLAIMS FOR ANY OTHER REASON MUST BE REPORTED TO THIS COMPANY WITHIN 10 DAYS FROM ORIGINAL DELIVERY. THIS COMPANY ALSO RESERVES THE RIGHT TO FIELD INSPECT MATERIALS PRIOR TO REPLACEMENT OR RECONDITIONING OF MATERIALS AND WILL NOT BE LIABLE FOR CHARGES FROM WORK DONE IN THE FIELD WITHOUT PRIOR AUTHORIZATION FROM THIS COMPANY.

REINFORCING STEEL PLACING DRAWING ONLY. USE IN CONJUNCTION WITH CONTRACT DRAWINGS & SPECIFICATIONS. ELEVATIONS & DIMENSIONS SHOWN ON DRAWING ARE FOR DETAILING PURPOSES ONLY AND SHOULD NOT BE USED FOR CONSTRUCTION UNLESS VERIFIED BY ENGINEER OR CONTRACTOR.



WALL DOWEL REINFORCEMENT DETAILS
 SCALE: 1/8" = 1'-0"
 REF: S101 (DT.06/29/22)



Release Number: R05

Bar Mark	Qty	Size	Total Length	Type	X'	Y'	Z'	W'	V'	U'	T'	S'	R'	Q'	P'	O'	N'	M'	L'	K'	J'	I'	H'	G'	F'	E'	D'	C'	B'	A'
5C01	68	#5	4'-2"	2	0'-10"	3'-4"																								
6C17	1418	#6	4'-10"	2	1'-0"	3'-10"																								

LAP SCHEDULE
 4000 PSI (CLASS-B) CASE - 1
 Per ACI:318 (12.2.2)

BAR#	LENGTHS	
	TOP	OTHERS
#3	2'-0"	1'-7"
#4	2'-8"	2'-1"
#5	3'-4"	2'-7"
#6	4'-0"	3'-1"
#7	5'-10"	4'-6"
#8	6'-8"	5'-2"

TYPICAL REINFORCING BAR CLEARANCE TABLE

LOCATION	MIN. COVER
FOOTING SIDE & BOTTOM	3" CLR
WALL SIDE	2" CLR

**ALL BARS IN THIS DRAWING
 ASTM A615 GRADE 60
 BLACK UNCOATED**

REBAR GRADE 60 ASTM A-615

SPLICES USED		ABBREVIATIONS	BAR MARK SIZE EQUIVALENT	
CLASS B 4,000 psi UNO		ADD. = Additional	Imperial	Soft Metric
TOP BARS	OTHER BARS	B.O.W. = Bottom of wall	#3	#10
#3	#3	C.B. = Corner Bars	#4	#13
#4	#4	DIAG. = Diagonal	#5	#16
#5	#5	D.O. = Door Opening	#6	#19
#6	#6	D.W.L.S. = Dowels	#7	#22
#7	#7	E.F. = Each Face	#8	#25
#8	#8	E.S. = Each Side	#9	#29
#9	#9	E.W. = Each Way	#10	#32
#10	#10	FTG. = Footing	#11	#36
#11	#11	F.F. = Far Face		
#14	#14	HORIZ. = Horizontal		
		I.F. = Inside Face		
		INTERS. = Intersection		
		L.W. = Long Way		
		N.F. = Near Face		
		O.F. = Outside Face		
		S.W. = Short Way		
		T&B = Top & Bottom		
		T.O.W. = Top of Wall		
		Trans. = Transverse		
		VERT. = Vertical		

LIBERTY PARK 48 UNITS
 WALL DOWEL REINFORCEMENT DETAILS
 UNION CITY, NJ

CUSTOMER: TORRES ATENO
 DESIGNER: JT ENGINEERING

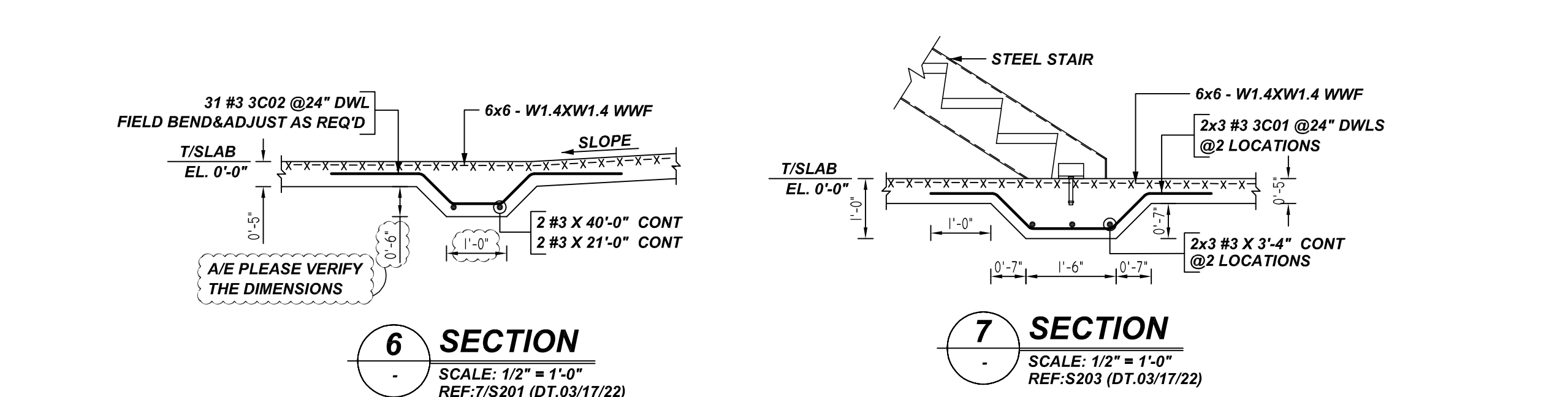
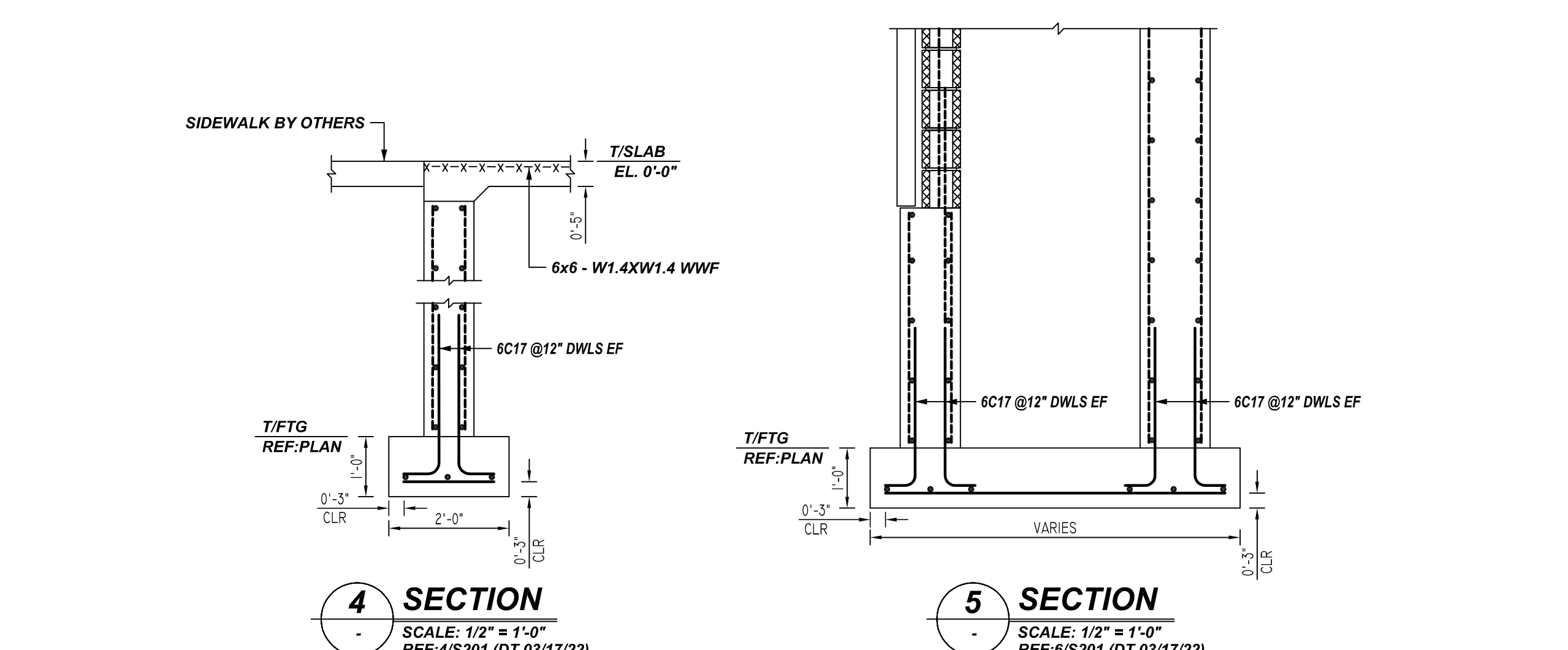
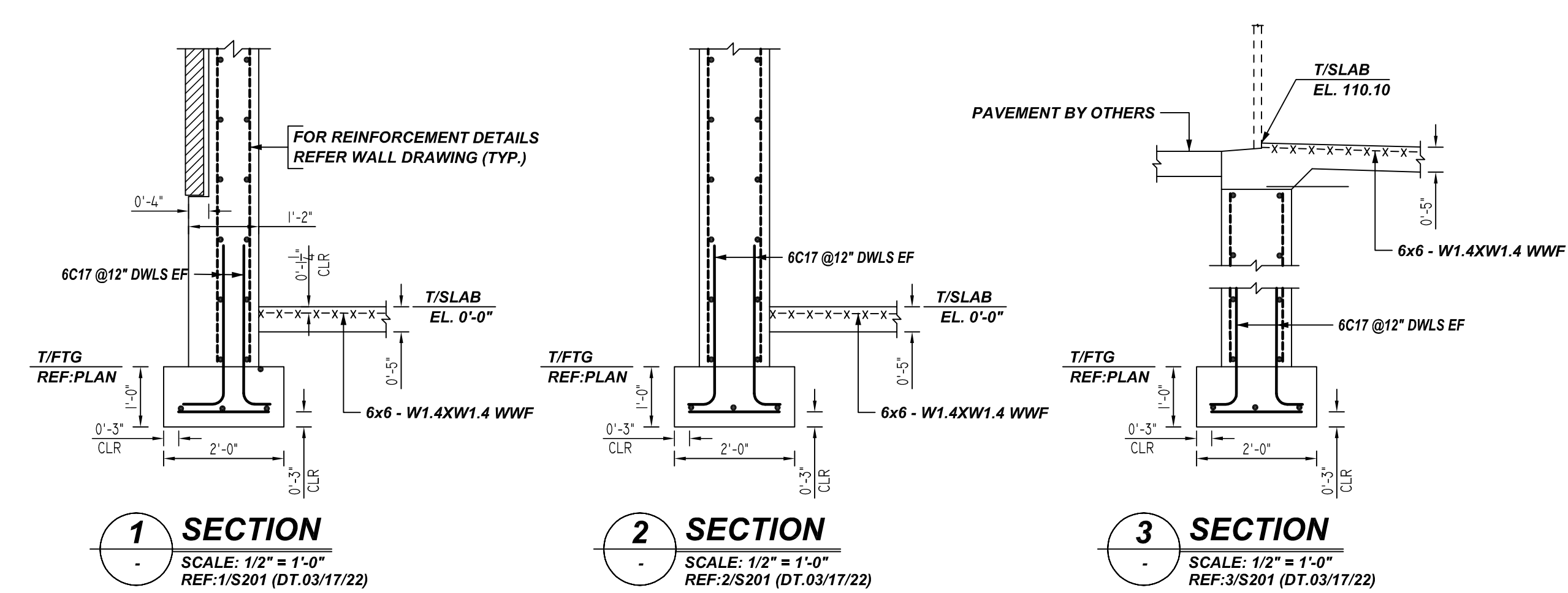
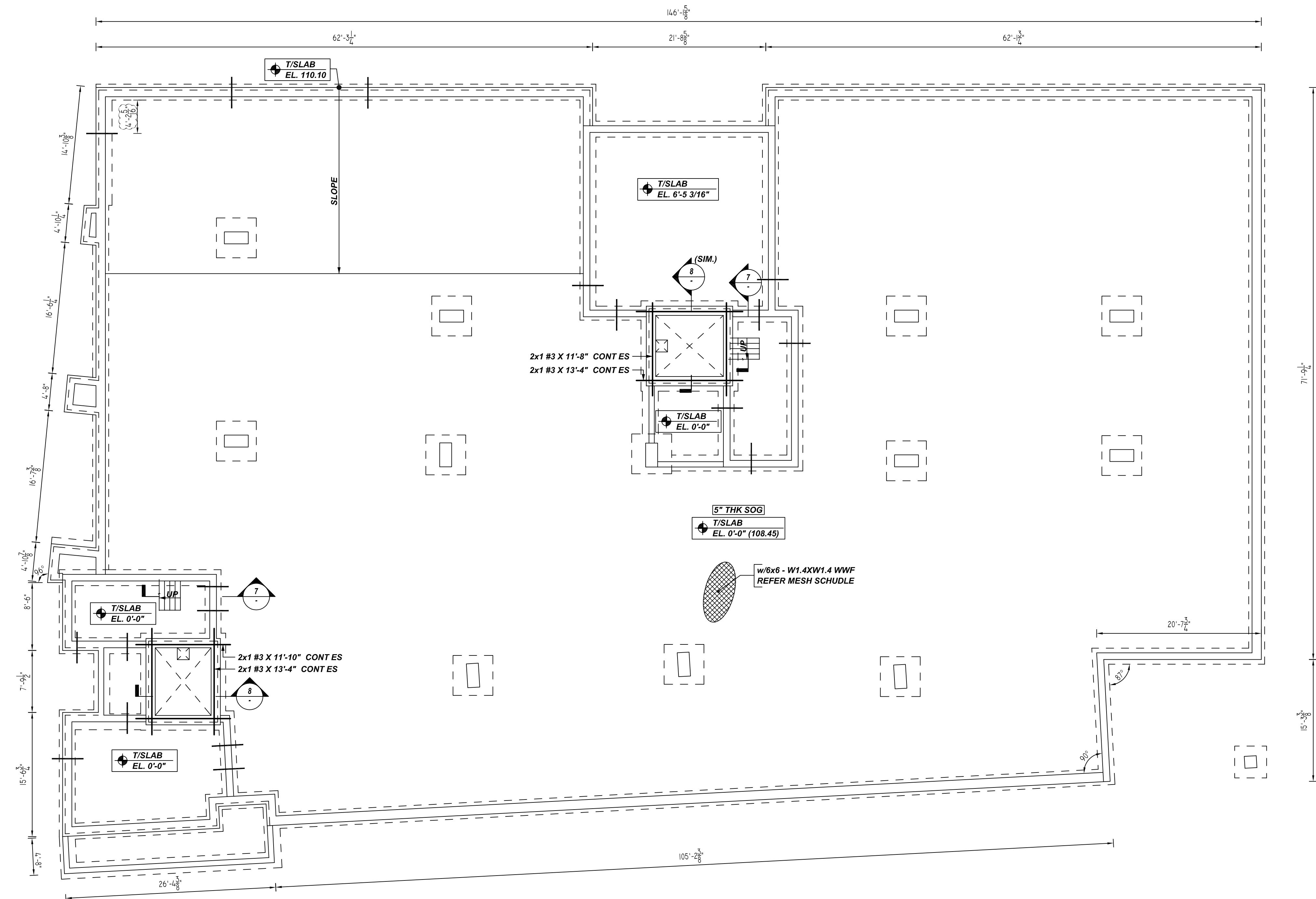
REV NO	DATE	SENT FOR	REV NO	DATE	SENT FOR
0	08.01.22	APPROVAL			

DRAWN BY	DATE	JOB NO	SHEET NO.
RTP/SS	08.01.22	M92270614P	R05

NOTICE

SHORTAGES, IMPROPER FABRICATION OR CLAIMS FOR ANY OTHER REASON MUST BE REPORTED TO THIS COMPANY WITHIN 10 DAYS FROM ORIGINAL DELIVERY. THIS COMPANY ALSO RESERVES THE RIGHT TO FIELD INSPECT MATERIALS PRIOR TO REPLACEMENT OR RECONDITIONING OF MATERIALS AND WILL NOT BE LIABLE FOR CHARGES FROM WORK DONE IN THE FIELD WITHOUT PRIOR AUTHORIZATION FROM THIS COMPANY.

REINFORCING STEEL PLACING DRAWING ONLY. USE IN CONJUNCTION WITH CONTRACT DRAWINGS & SPECIFICATIONS. ELEVATIONS & DIMENSIONS SHOWN ON DRAWING ARE FOR DETAILING PURPOSES ONLY AND SHOULD NOT BE USED FOR CONSTRUCTION UNLESS VERIFIED BY ENGINEER OR CONTRACTOR.



SLAB ON GRADE REINFORCEMENT DETAILS
SCALE: 1/8" = 1'-0"
REF: S101 (DT.06/29/22)

A/E PLEASE PROVIDE THE EXACT CONTROL JOINT LOCATIONS
ALSO PLEASE CONFIRM THE CONTROL JOINT BAR REQ'D (OR) NOT

MESH DETAILS				
S. NO	ELEMENT	MESH SIZE	SHEETS	REMARK
1	5" THK SLAB ON GRADE	6x6 - W1.4XW1.4 WWF	90	11933 SQ.FT 8'-0 X 20'-0" SHEET SIZE (15% LAP ADDED)

BONDING DETAILS												
Bar Mark	Qty	Size	Total Length	Type	X	Y	Z	V	W	U	T	W
3001	6	#3	5'-3"	3	1'-1"	0'-10"	X	1'-4"	X	0'-10"	X	0'-7"
3002	3	#3	5'-4"	3	1'-6"	0'-9"	0'-10"	0'-9"	1'-6"	1'-6"	0'-6"	4'-10"

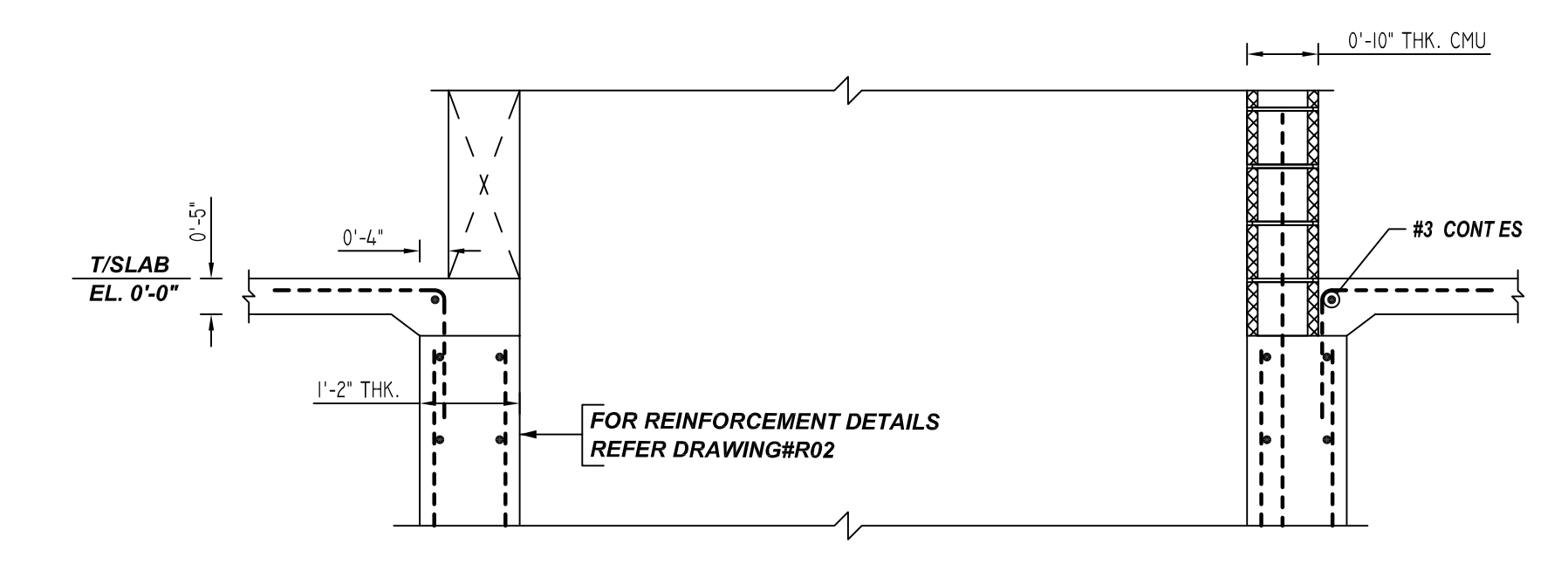
LAP SCHEDULE
4000 PSI (CLASS-B) CASE - 1
Per ACI: 318 (12.2.2)

BAR#	LENGTHS	
	TOP	OTHERS
#3	2'-0"	1'-7"
#4	2'-8"	2'-1"
#5	3'-4"	2'-7"
#6	4'-0"	3'-1"
#7	5'-10"	4'-6"
#8	6'-8"	5'-2"

TYPICAL REINFORCING BAR CLEARANCE TABLE

LOCATION	MIN. COVER
FOOTING SIDE & BOTTOM	3" CLR
WALL SIDE	2" CLR

**ALL BARS IN THIS DRAWING
ASTM A615 GRADE 60
BLACK UNCOATED**



8 SECTION
SCALE: 1/2" = 1'-0"
REF: A/S204 (DT.03/17/22)

REBAR GRADE 60 ASTM A-615

SPLICES USED		ABBREVIATIONS	BAR MARK SIZE EQUIVALENT	
CLASS B 4,000 psi UNO			Imperial	Soft Metric
TOP BARS	OTHER BARS	ADD. = Additional	#3	#10
#3	#3	B.O.W. = Bottom of wall	#4	#13
#4	#4	C.B. = Corner Bars	#5	#16
#5	#5	DIAG. = Diagonal	#6	#19
#6	#6	D.O. = Door Opening	#7	#22
#7	#7	D.WLS. = Dowels	#8	#25
#8	#8	E.F. = Each Face	#9	#29
#9	#9	E.S. = Each Side	#10	#32
#10	#10	E.W. = Each Way	#11	#36
#11	#11	FTG. = Footing		
#12	#12	F.F. = Far Face		
#13	#13	HORIZ. = Horizontal		
#14	#14	I.F. = Inside Face		
		INTERS. = Intersection		
		L.W. = Long Way		
		N.F. = Near Face		
		O.F. = Outside Face		
		S.W. = Short Way		
		T&B = Top & Bottom		
		T.O.W. = Top of Wall		
		Trans. = Transverse		
		VERT. = Vertical		

LIBERTY PARK 48 UNITS
SLAB ON GRADE REINFORCEMENT DETAILS
UNION CITY, NJ

CUSTOMER: TORRES ATENO
DESIGNER: JT ENGINEERING

REV NO	DATE	APPROVAL	SENT FOR	REV NO	DATE	SENT FOR
0	08.01.22					

DRAWN BY	DATE	JOB NO	SHEET NO.
RTP/SS	08.01.22	M92270614P	R06