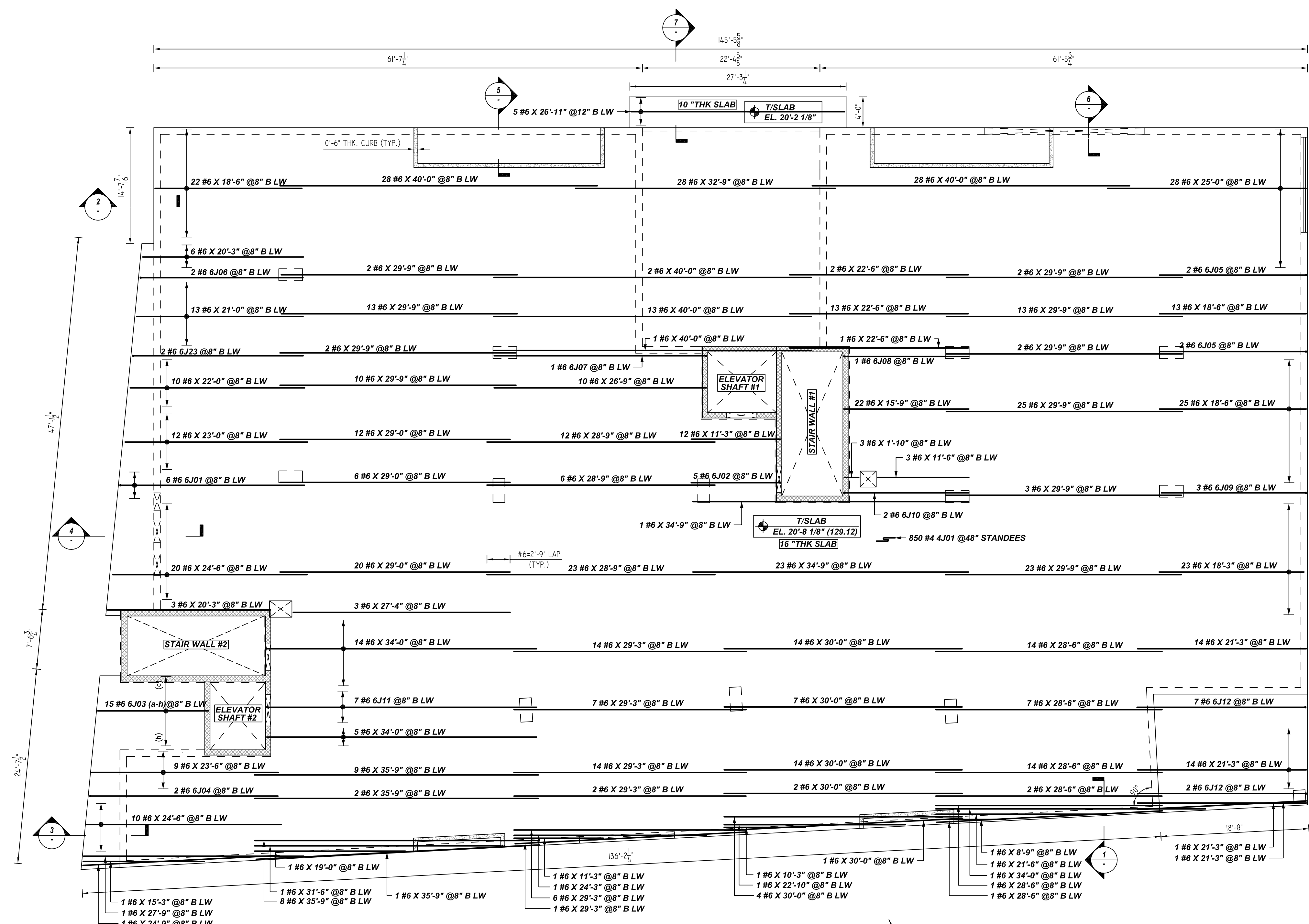


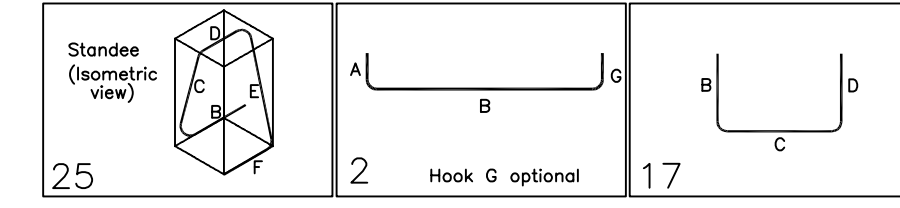
**NOTICE**

SHORTAGES, IMPROPER FABRICATION OR CLAIMS FOR ANY OTHER REASON MUST BE REPORTED TO THIS COMPANY WITHIN 10 DAYS FROM ORIGINAL DELIVERY. THIS COMPANY ALSO RESERVES THE RIGHT TO FIELD INSPECT MATERIALS PRIOR TO REPLACEMENT OR RECONDITIONING OF MATERIALS AND WILL NOT BE LIABLE FOR CHARGES FROM WORK DONE IN THE FIELD WITHOUT PRIOR AUTHORIZATION FROM THIS COMPANY.

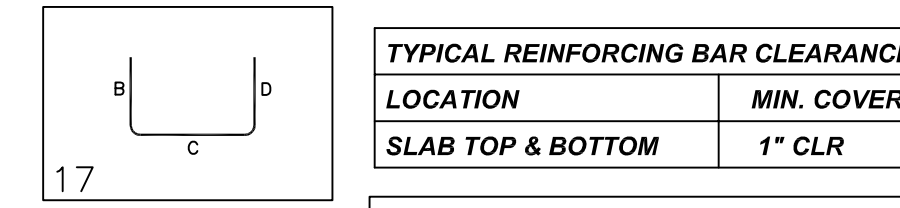
REINFORCING STEEL PLACING DRAWING ONLY USE IN CONJUNCTION WITH CONTRACT DRAWINGS & SPECIFICATIONS. ELEVATIONS & DIMENSIONS SHOWN ON DRAWING ARE FOR DETAILING PURPOSES ONLY AND SHOULD NOT BE USED FOR CONSTRUCTION UNLESS VERIFIED BY ENGINEER OR CONTRACTOR.



Bar Mark	Qty	Size	Total Length	Type	X	Y	Z	W	V	U	T	S	R	Q	P	O	N	M	L	K	J	I	H	G	F	E	D	C	B	A
603a	2	#6	15'-4"																											



Bar Mark	Qty	Size	Total Length	Type	X	Y	Z	W	V	U	T	S	R	Q	P	O	N	M	L	K	J	I	H	G	F	E	D	C	B	A
301	8	#3	3'-5 X 17																											



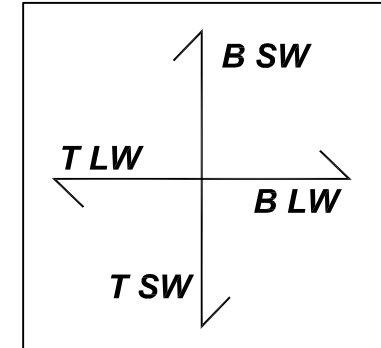
**LAP SCHEDULE**

5000 PSI (CLASS-B) CASE - 1  
Per ACI 318 (12.2.2)

BAR#	LENGTHS	
	TOP	OTHERS
#3	1'-10"	1'-5"
#4	2'-5"	1'-10"
#5	3'-0"	2'-4"
#6	3'-7"	2'-9"
#7	5'-3"	4'-1"
#8	6'-0"	4'-7"

**ALL BARS IN THIS DRAWING  
ASTM A615 GRADE 60  
BLACK UNCOATED (U.N.O)**

**SECOND FLOOR SLAB REINFORCEMENT DETAILS**



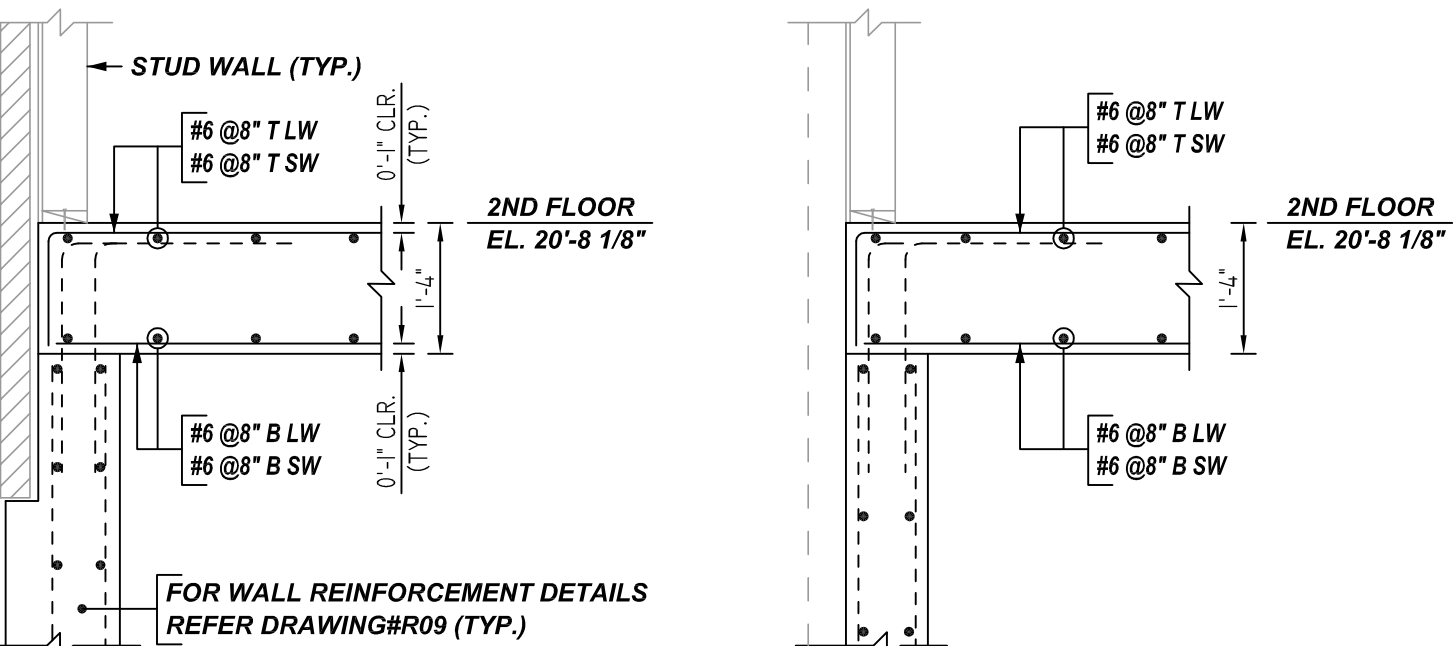
SCALE: 1/8" = 1'-0"  
REF: S103, S103A&S304 (DT.06/29/22)  
A/E PLEASE VERIFY THE BAR ARRANGEMENTS

**1 SECTION**

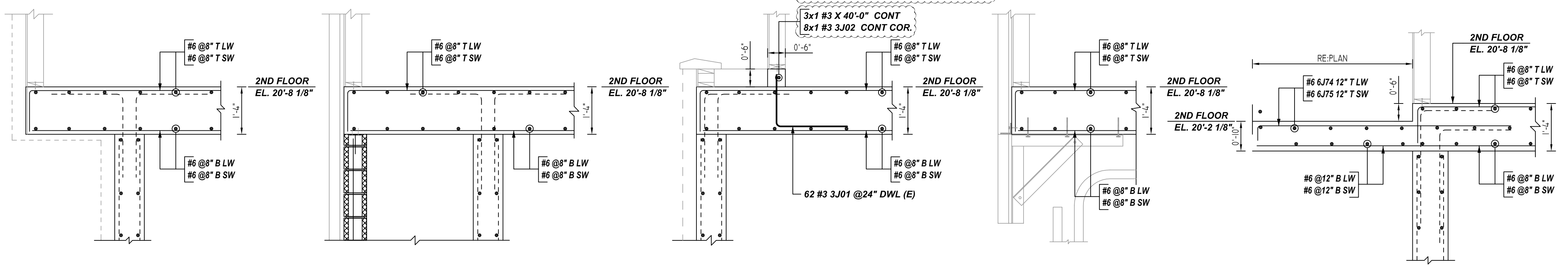
SCALE: 1/2" = 1'-0"  
REF: S/S301 (DT.03/17/22)

**2 SECTION**

SCALE: 1/2" = 1'-0"  
REF: S/S301 (DT.03/17/22)



FIELD CUT, BEND & ADJUST REQ'D SUITE AT SITE LOCATION



**3 SECTION**

SCALE: 1/2" = 1'-0"  
REF: 7/S301 (DT.03/17/22)

**4 SECTION**

SCALE: 1/2" = 1'-0"  
REF: 8/S301 (DT.03/17/22)

**5 SECTION**

SCALE: 1/2" = 1'-0"  
REF: 9/S302 (DT.03/17/22)

**6 SECTION**

SCALE: 1/2" = 1'-0"  
REF: 10/S302 (DT.03/17/22)

**7 SECTION**

SCALE: 1/2" = 1'-0"  
REF: 11/S302 (DT.03/17/22)

**REBAR GRADE 60 ASTM A-615**

SPLICES USED		ABBREVIATIONS		BAR MARK SIZE EQUIVALENT	
CLASS B 4,000 psi UNO				Imperial	Soft Metric
TOP BARS	OTHER BARS	ADD.	Additional	#3	#10
#3	#3	B.O.W.	Bottom of wall	#4	#13
#4	#4	C.B.	Corner Bars	#5	#16
#5	#5	DIAG.	Diagonal	#6	#19
#6	#6	D.O.	Door Opening	#7	#22
#7	#7	DWLS.	Dowels	#8	#25
#8	#8	E.F.	Each Face	#9	#29
#9	#9	E.S.	Each Side	#10	#32
#10	#10	E.W.	Each Way	#11	#36
#11	#11	FTG.	Footing		
#12	#12	F.F.	Far Face		
#13	#13	HORIZ.	Horizontal		
#14	#14	I.F.	Inside Face		
		INTERS.	Intersection		
		L.W.	Long Way		
		N.F.	Near Face		
		O.F.	Outside Face		
		S.W.	Short Way		
		T&B	Top & Bottom		
		T.O.W.	Top of Wall		
		Trans.	Transverse		
		VERT.	Vertical		

**LIBERTY PARK 48 UNITS  
SECOND FLOOR SLAB REINFORCEMENT DETAILS  
UNION CITY, NJ**

CUSTOMER: TORRES ATENO  
DESIGNER: JT ENGINEERING

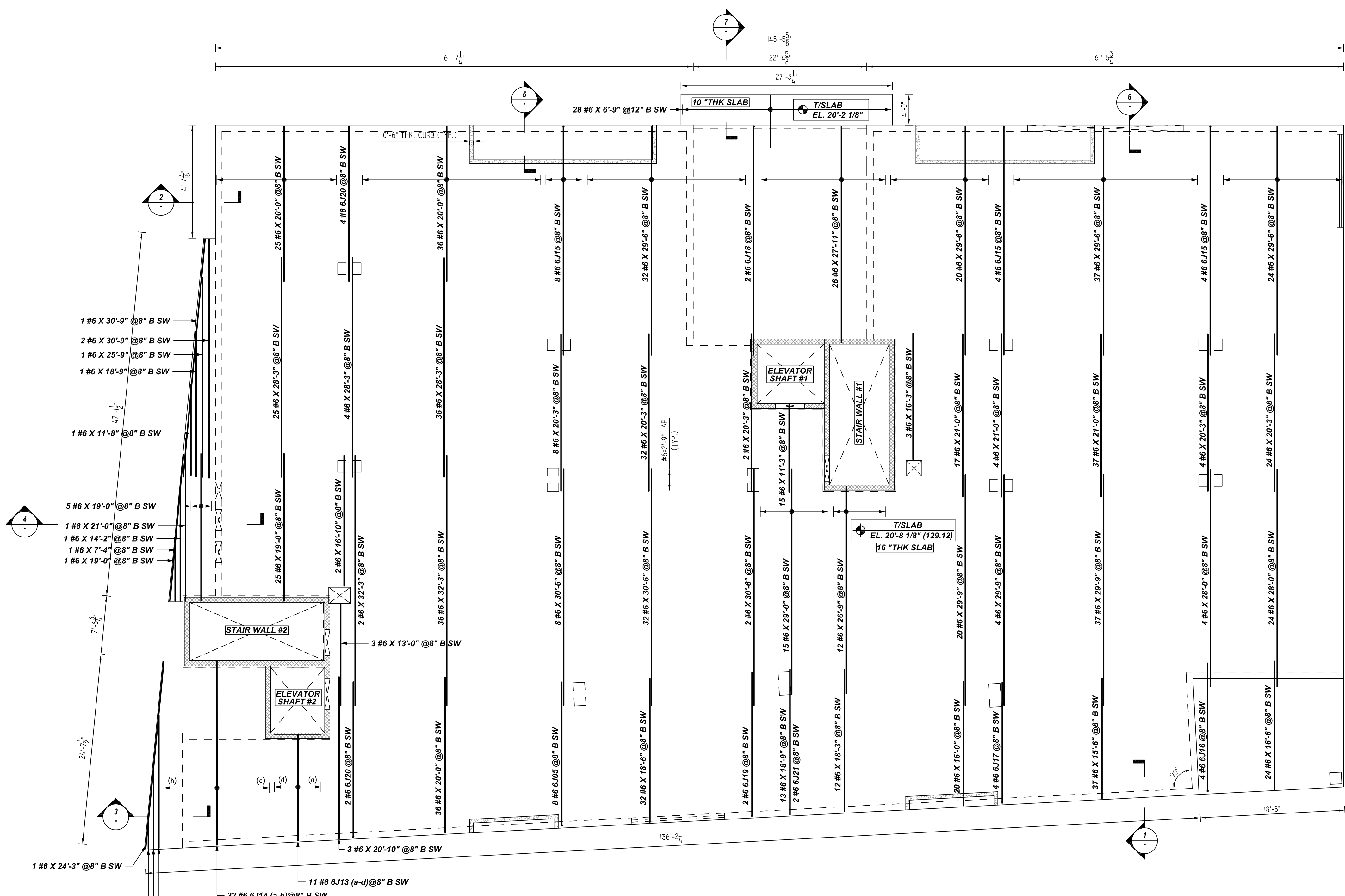
REV NO	DATE	APPROVAL	REV NO	DATE	SENT FOR
0	08.09.22				

DRAWN BY	DATE	JOB NO	SHEET NO.
RTP/SS	08.09.22	M92270614P	R23

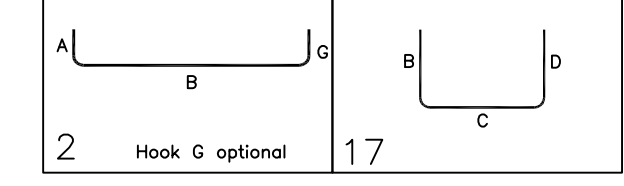
**NOTICE**

SHORTAGES, IMPROPER FABRICATION OR CLAIMS FOR ANY OTHER REASON MUST BE REPORTED TO THIS COMPANY WITHIN 10 DAYS FROM ORIGINAL DELIVERY. THIS COMPANY ALSO RESERVES THE RIGHT TO FIELD INSPECT MATERIALS PRIOR TO REPLACEMENT OR RECONDITIONING OF MATERIALS AND WILL NOT BE LIABLE FOR CHARGES FROM WORK DONE IN THE FIELD WITHOUT PRIOR AUTHORIZATION FROM THIS COMPANY.

REINFORCING STEEL PLACING DRAWING ONLY. USE IN CONJUNCTION WITH CONTRACT DRAWINGS & SPECIFICATIONS. ELEVATIONS & DIMENSIONS SHOWN ON DRAWING ARE FOR DETAILING PURPOSES ONLY AND SHOULD NOT BE USED FOR CONSTRUCTION UNLESS VERIFIED BY ENGINEER OR CONTRACTOR.



Release Number: R24	Rev	Mark	Qty	Size	Total Length	Type	Y	X	Y	X	Y	X	Y	X	Y	X	
6113a	3	#6		13'-6"													
6113b	2	#6		13'-10"													
6114a	3	#6		23'-3"													



TYPICAL REINFORCING BAR CLEARANCE TABLE		
LOCATION	MIN. COVER	
SLAB TOP & BOTTOM	1" CLR	

**LAP SCHEDULE**

5000 PSI (CLASS-B) CASE - 1  
Per ACI 318 (12.2.2)

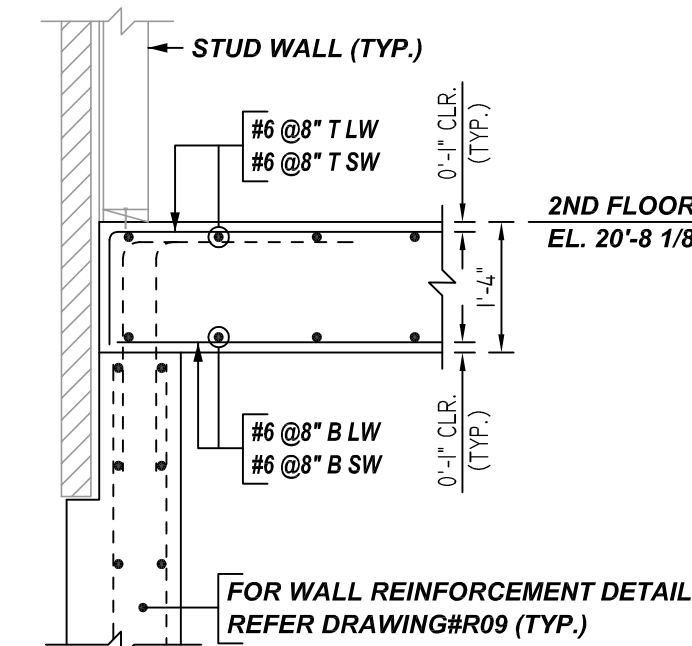
BAR#	LENGTHS	
	TOP	OTHERS
#3	1'-10"	1'-5"
#4	2'-5"	1'-10"
#5	3'-0"	2'-4"
#6	3'-7"	2'-9"
#7	5'-3"	4'-1"
#8	6'-0"	4'-7"

**ALL BARS IN THIS DRAWING  
ASTM A615 GRADE 60  
BLACK UNCOATED (U.N.O)**

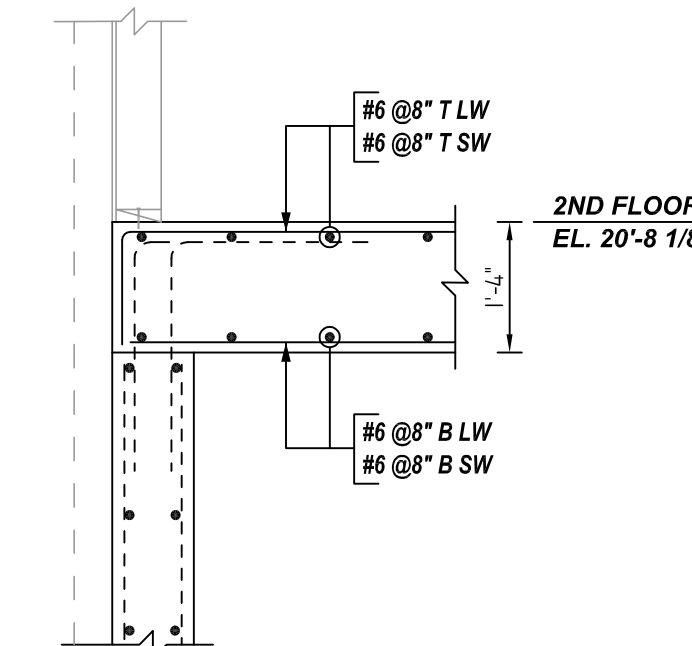


**SECOND FLOOR SLAB REINFORCEMENT DETAILS**

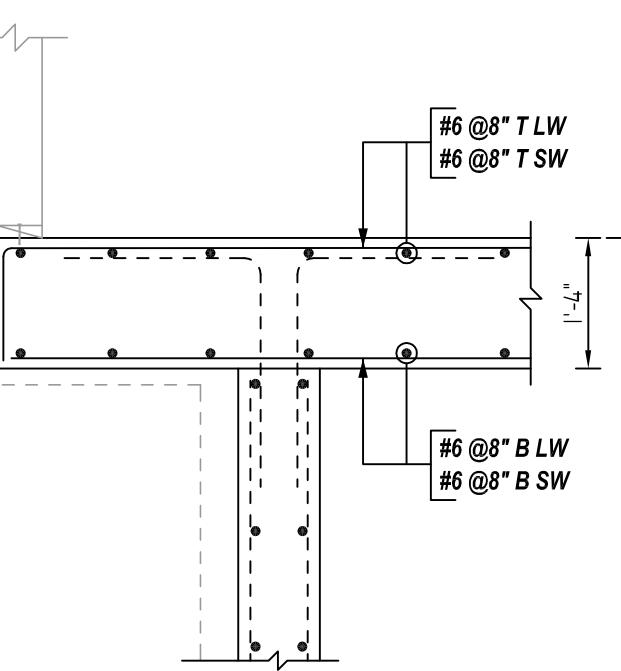
SCALE: 1/8" = 1'-0"  
REF: S103, S103A&S304 (DT.06/29/22)  
A/E PLEASE VERIFY THE BAR ARRANGEMENTS



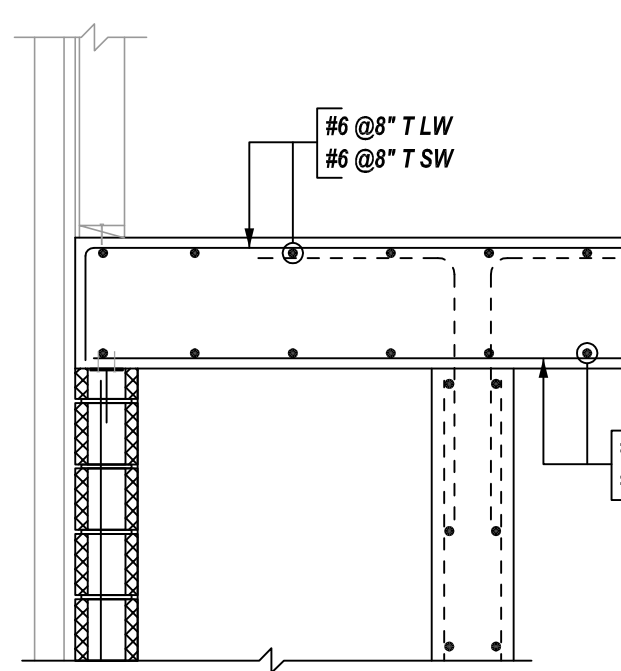
**1 SECTION**  
SCALE: 1/2" = 1'-0"  
REF: S301 (DT.03/17/22)



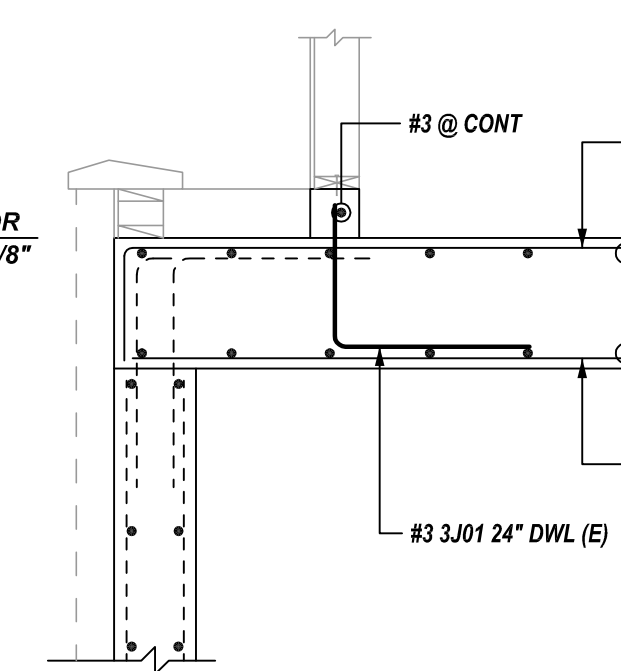
**2 SECTION**  
SCALE: 1/2" = 1'-0"  
REF: S301 (DT.03/17/22)



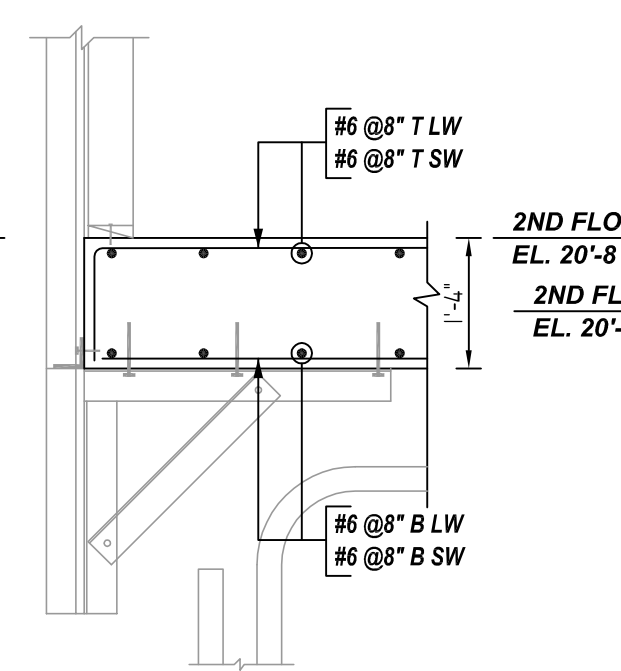
**3 SECTION**  
SCALE: 1/2" = 1'-0"  
REF: 7/S301 (DT.03/17/22)



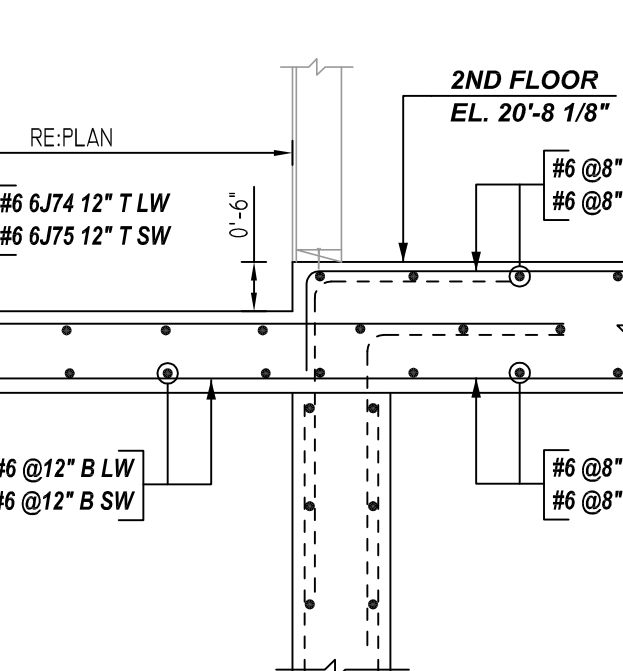
**4 SECTION**  
SCALE: 1/2" = 1'-0"  
REF: 8/S301 (DT.03/17/22)



**5 SECTION**  
SCALE: 1/2" = 1'-0"  
REF: 9/S302 (DT.03/17/22)



**6 SECTION**  
SCALE: 1/2" = 1'-0"  
REF: 10/S302 (DT.03/17/22)



**7 SECTION**  
SCALE: 1/2" = 1'-0"  
REF: 11/S302 (DT.03/17/22)

**REBAR GRADE 60 ASTM A-615**

SPLICES USED		ABBREVIATIONS		BAR MARK SIZE EQUIVALENT	
CLASS B 4,000 psi UNO				Imperial	Soft Metric
TOP BARS	OTHER BARS	ADD.	Additional	#3	#10
#3	#3	B.O.W.	Bottom of wall	#4	#13
#4	#4	C.B.	Corner Bars	#5	#16
#5	#5	DIAG.	Diagonal	#6	#19
#6	#6	D.O.	Door Opening	#7	#22
#7	#7	DWLS.	Dowels	#8	#25
#8	#8	E.F.	Each Face	#9	#29
#9	#9	E.S.	Each Side	#10	#32
#10	#10	E.W.	Each Way	#11	#36
#11	#11	FTG.	Footing		
#12	#12	F.F.	Far Face		
#13	#13	HORIZ.	Horizontal		
#14	#14	I.F.	Inside Face		
		INTERS.	Intersection		
		L.W.	Long Way		
		N.F.	Near Face		
		O.F.	Outside Face		
		S.W.	Short Way		
		T&B	Top & Bottom		
		T.O.W.	Top of Wall		
		Trans.	Transverse		
		VERT.	Vertical		

**LIBERTY PARK 48 UNITS  
SECOND FLOOR SLAB REINFORCEMENT DETAILS  
UNION CITY, NJ**

CUSTOMER: TORRES ATENO  
DESIGNER: JT ENGINEERING

REV NO	DATE	APPROVAL	REV NO	DATE	SENT FOR
0	08.09.22				

DRAWN BY	DATE	JOB NO	SHEET NO.
RTP/SS	08.09.22	M92270614P	R24

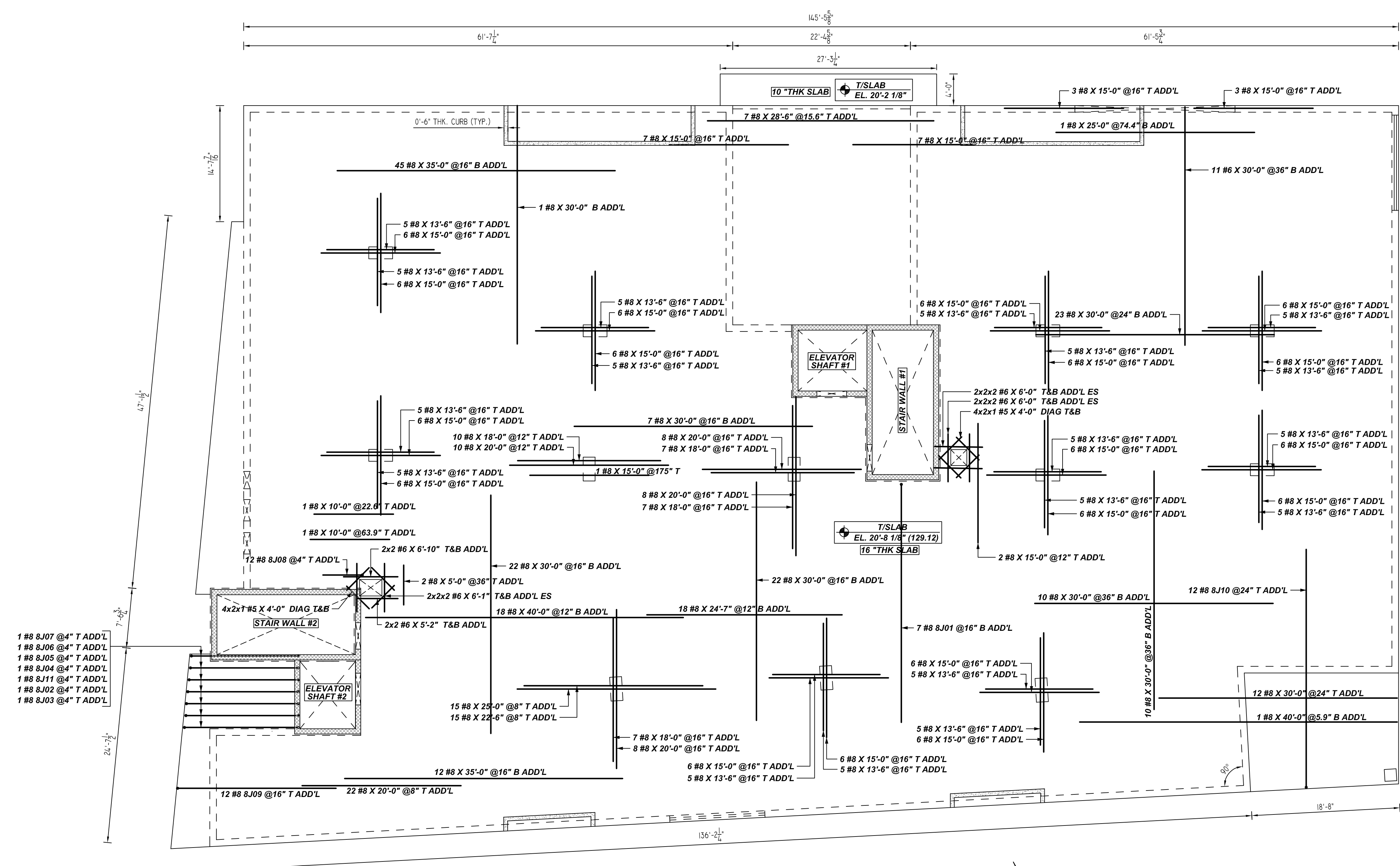




**NOTICE**

SHORTAGES, IMPROPER FABRICATION OR CLAIMS FOR ANY OTHER REASON MUST BE REPORTED TO THIS COMPANY WITHIN 10 DAYS FROM ORIGINAL DELIVERY. THIS COMPANY ALSO RESERVES THE RIGHT TO FIELD INSPECT MATERIALS PRIOR TO REPLACEMENT OR RECONDITIONING OF MATERIALS AND WILL NOT BE LIABLE FOR CHARGES FROM WORK DONE IN THE FIELD WITHOUT PRIOR AUTHORIZATION FROM THIS COMPANY.

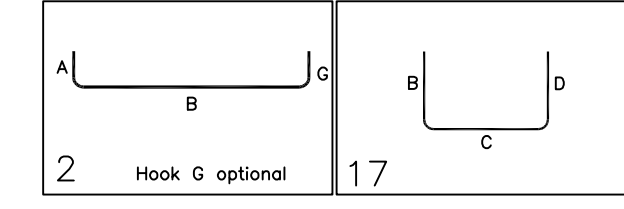
REINFORCING STEEL PLACING DRAWING ONLY. USE IN CONJUNCTION WITH CONTRACT DRAWINGS & SPECIFICATIONS. ELEVATIONS & DIMENSIONS SHOWN ON DRAWING ARE FOR DETAILING PURPOSES ONLY AND SHOULD NOT BE USED FOR CONSTRUCTION UNLESS VERIFIED BY ENGINEER OR CONTRACTOR.



**TOP & BOTTOM ADDITIONAL BARS  
SECOND FLOOR SLAB REINFORCEMENT DETAILS**

SCALE: 1/8" = 1'-0"  
REF: S103, S103A & S304 (DT.06/29/22)

Bar Mark	Qty	Size	Total Length	Type	X	Y	Z	W	V	U	T	S	R	Q	P	O	N	M	L	K	J	I	H	G	F	E	D	C	B	A
801	7	#8	31'-4"	2	1'-4"	30'-0"																								
810	12	#8	31'-2"	17	1'-2"	30'-0"																								
809	12	#8	21'-2"	17	1'-2"	20'-0"																								
808	12	#8	6'-2"	17	1'-2"	5'-0"																								
807	1	#8	15'-10 1/2"	17	1'-2"	13'-6 1/2"	1'-2"																							
806	1	#8	16'-2"	17	1'-2"	13'-8"	1'-2"																							
805	1	#8	16'-2"	17	1'-2"	13'-8"	1'-2"																							
804	1	#8	16'-4"	17	1'-2"	14'-0"	1'-2"																							
811	1	#8	16'-5 1/2"	17	1'-2"	14'-2"	1'-2"																							
802	1	#8	16'-7"	17	1'-2"	14'-3"	1'-2"																							
803	1	#8	16'-8 1/2"	17	1'-2"	14'-5"	1'-2"																							



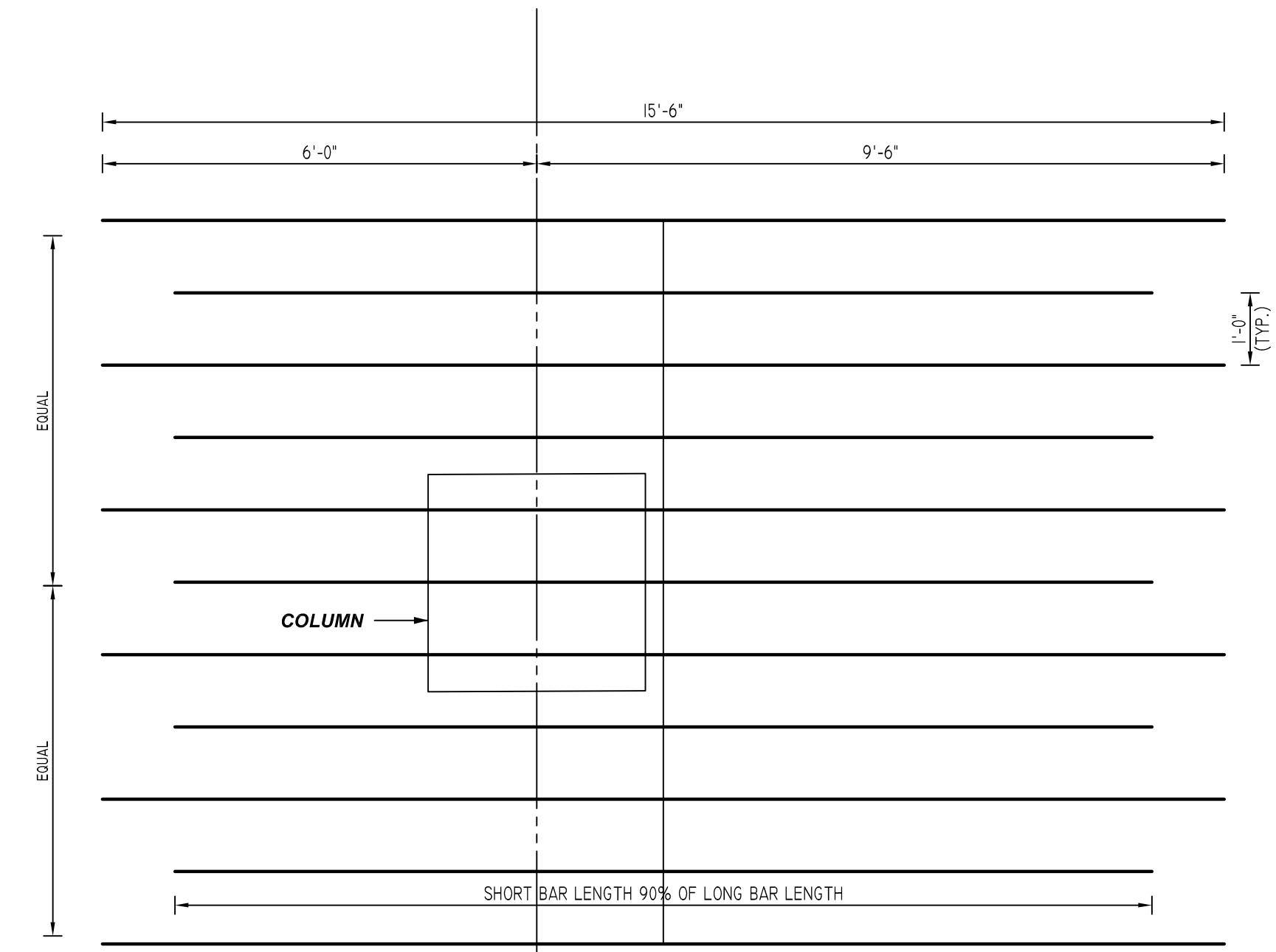
LOCATION	MIN. COVER
SLAB TOP & BOTTOM	1" CLR

**LAP SCHEDULE**

5000 PSI (CLASS-B) CASE - 1  
Per ACI 318 (12.2.2)

BAR#	LENGTHS	
	TOP	OTHERS
#3	1'-10"	1'-5"
#4	2'-5"	1'-10"
#5	3'-0"	2'-4"
#6	3'-7"	2'-9"
#7	5'-3"	4'-1"
#8	6'-0"	4'-7"

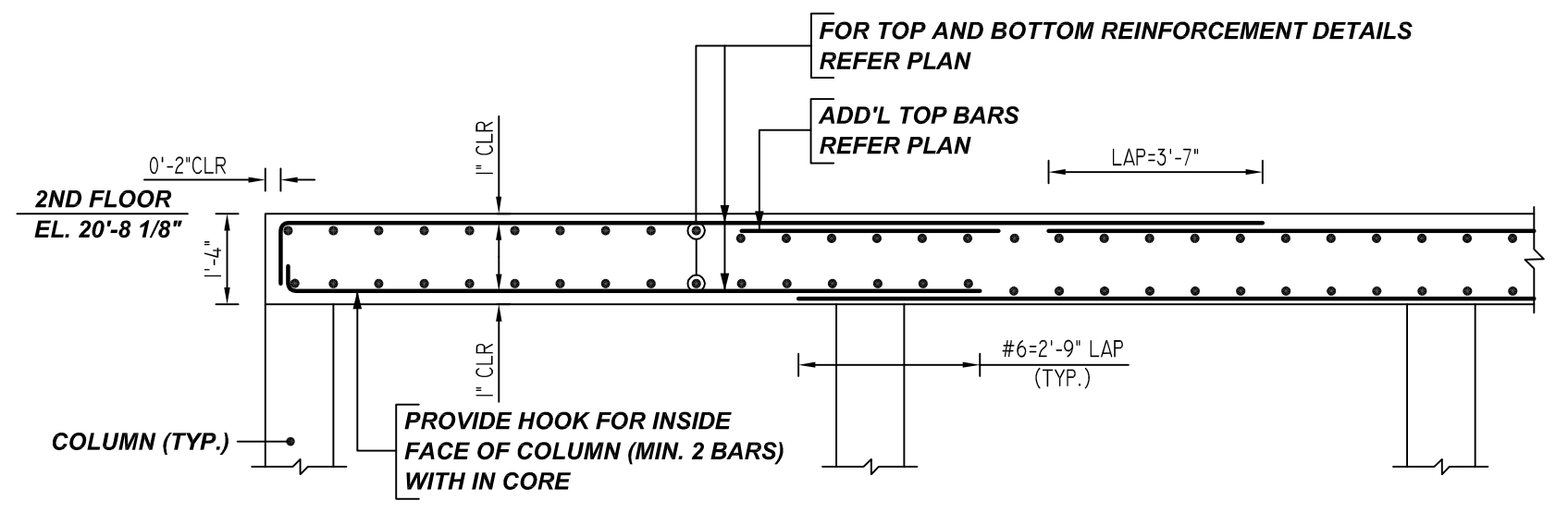
**ALL BARS IN THIS DRAWING  
ASTM A615 GRADE 60  
BLACK UNCOATED (U.N.O)**



**TYPICAL COLUMN STRIP TOP BAR PLACEMENT (OPTION-1)**

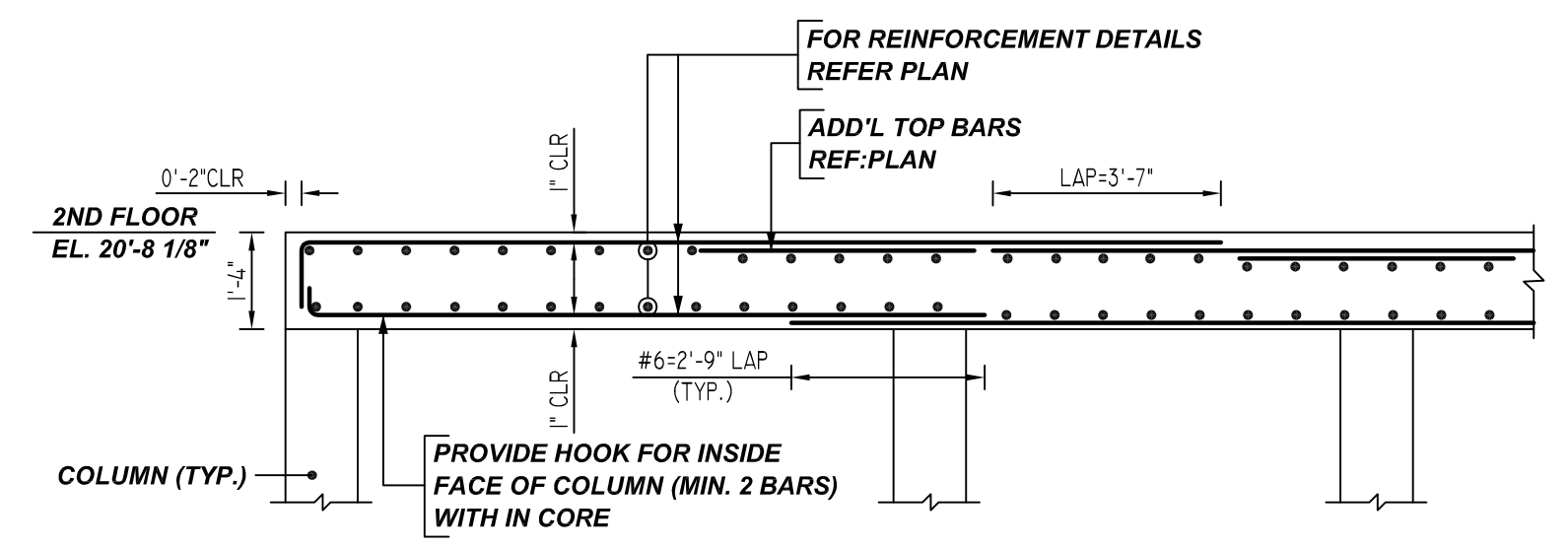
SCALE: 1/2" = 1'-0"  
REF: S304 (DT.03/17/22)

A/E PLEASE CONFIRM THE COLUMN STRIP (OPTION-1) CONDITION WE FOLLOWED



**TYPICAL 2-WAY CONCRETE SLAB (MIDDLE STRIP) CONSTRUCTION DETAIL**

SCALE: 1/2" = 1'-0"  
REF: S304 (DT.03/17/22)



**TYPICAL 2-WAY CONCRETE SLAB (COLUMN STRIP) CONSTRUCTION DETAIL**

SCALE: 1/2" = 1'-0"  
REF: S304 (DT.03/17/22)

**REBAR GRADE 60 ASTM A-615**

SPLICES USED		ABBREVIATIONS		BAR MARK SIZE EQUIVALENT	
CLASS B 4,000 psi UNO				Imperial	Soft Metric
TOP BARS	OTHER BARS	ADD.	Additional	#3	#10
#3 -	#3 -	B.O.W.	Bottom of wall	#4	#13
#4 -	#4 -	C.B.	Corner Bars	#5	#16
#5 -	#5 -	DIAG.	Diagonal	#6	#19
#6 -	#6 -	D.O.	Door Opening	#7	#22
#7 -	#7 -	DWLS.	Dowels	#8	#25
#8 -	#8 -	E.F.	Each Face	#9	#29
#9 -	#9 -	E.S.	Each Side	#10	#32
#10 -	#10 -	E.W.	Each Way	#11	#36
#11 -	#11 -	FTG.	Footings		
#14 -	#14 -	F.F.	Far Face		
		HORIZ.	Horizontal		
		I.F.	Inside Face		
		INTERS.	Intersection		
		L.W.	long Way		
		N.F.	Near Face		
		O.F.	Outside Face		
		S.W.	Short Way		
		T&B	Top & Bottom		
		T.O.W.	Top of Wall		
		Trans.	Transverse		
		VERT.	Vertical		

**LIBERTY PARK 48 UNITS  
SECOND FLOOR SLAB REINFORCEMENT DETAILS  
UNION CITY, NJ**

CUSTOMER: TORRES ATENO  
DESIGNER: JT ENGINEERING

REV NO	DATE	SENT FOR	REV NO	DATE	SENT FOR
0	08.09.22	APPROVAL			

DRAWN BY	DATE	JOB NO	SHEET NO.
RTP/SS	08.09.22	M92270614P	R27