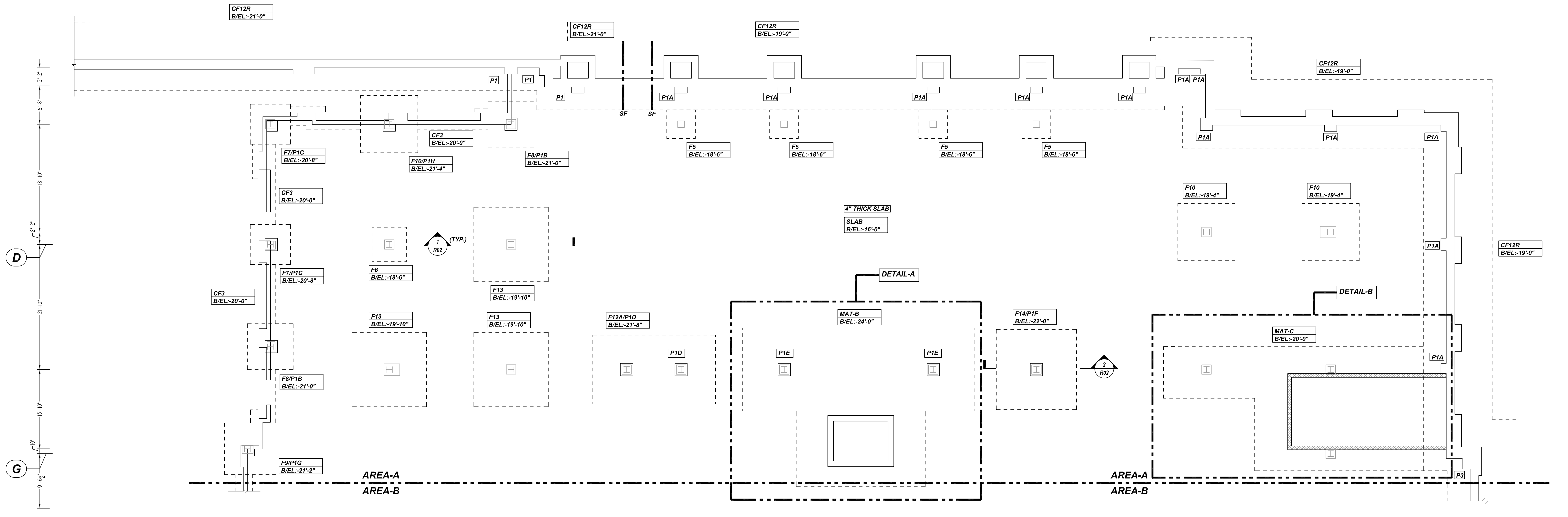
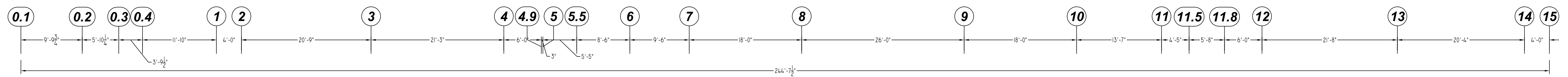
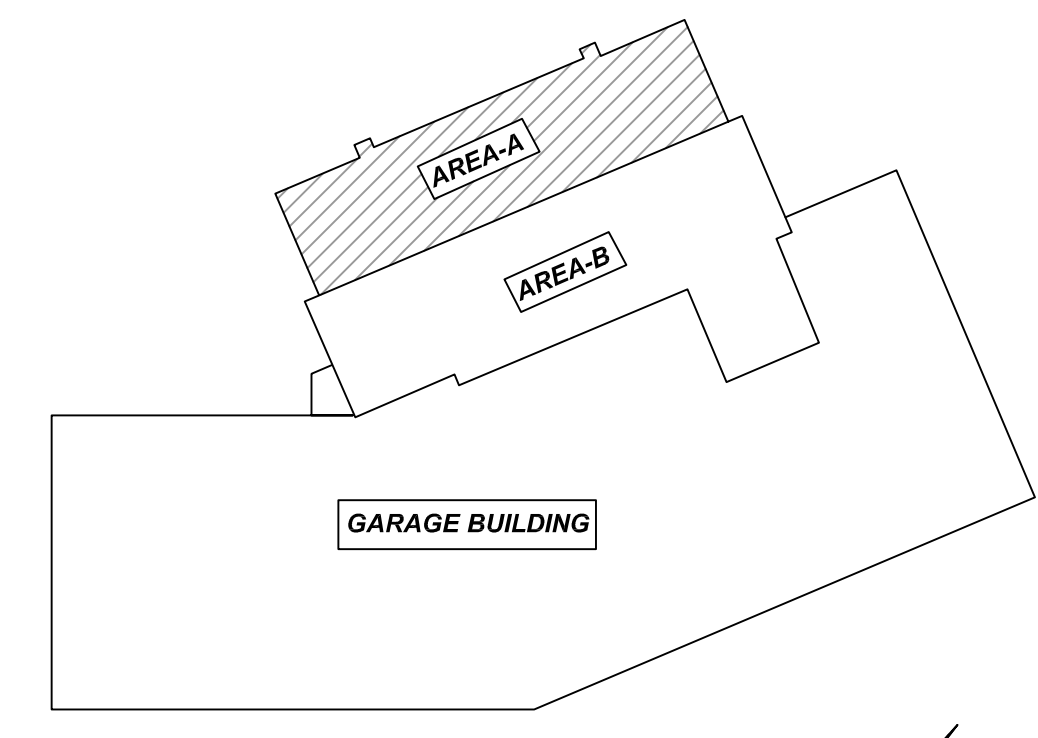


NOTICE
 SHORTAGES, IMPROPER FABRICATION OR CLAIMS FOR ANY OTHER REASON MUST BE REPORTED TO THIS COMPANY WITHIN 10 DAYS FROM ORIGINAL DELIVERY. THIS COMPANY ALSO RESERVES THE RIGHT TO FIELD INSPECT MATERIALS PRIOR TO REPLACEMENT OR RECONDITIONING OF MATERIALS AND WILL NOT BE LIABLE FOR CHARGES FROM WORK DONE IN THE FIELD WITHOUT PRIOR AUTHORIZATION FROM THIS COMPANY.

REINFORCING STEEL PLACING DRAWING ONLY. USE IN CONJUNCTION WITH CONTRACT DRAWINGS & SPECIFICATIONS. ELEVATIONS & DIMENSIONS SHOWN ON DRAWING ARE FOR DETAILING PURPOSES ONLY AND SHOULD NOT BE USED FOR CONSTRUCTION UNLESS VERIFIED BY ENGINEER OR CONTRACTOR.



AREA-ASPREAD FOOTING & PIER LAYOUT PLAN
 SCALE - 1/8"=1'-0"
 REF: S1.00



OVERALL KEY PLAN
 SCALE - 1/8"=1'-0"
 REF: S1.00

A/E PLEASE VERIFY COVER FOLLOWED

TYPICAL REINFORCING BAR CLEARANCE TABLE	
LOCATION	MIN. COVER
FOOTING ALL SIDES	3" CLR
PIER ALL SIDES	2" CLR

**ALL BARS IN THIS DRAWING
 ASTM A615 GRADE 60
 BLACK UNCOATED**

REBAR GRADE 60 ASTM A-615

SPLICES USED		ABBREVIATIONS		BAR MARK SIZE EQUIVALENT	
CLASS B 4,000 psi UNO				Imperial	Soft Metric
TOP BARS	OTHER BARS	ADD.	Additional	#3	#10
#3 24"	#3 19"	B.O.W.	Bottom of wall	#4	#13
#4 32"	#4 25"	C.B.	Corner Bars	#5	#16
#5 40"	#5 31"	DIAG.	Diagonal	#6	#19
#6 48"	#6 37"	D.O.	Door Opening	#7	#22
#7 70"	#7 54"	DWLS.	Dowels	#8	#25
#8 80"	#8 62"	E.F.	Each Face	#9	#29
#9 91"	#9 70"	E.S.	Each Side	#10	#32
#10 102"	#10 79"	E.W.	Each Way	#11	#36
#11 113"	#11 87"	FTG.	Footing		
#14	#14	F.F.	Far Face		
		HORIZ.	Horizontal		
		I.F.	Inside Face		
		INTERS.	Intersection		
		L.W.	long Way		
		N.F.	Near Face		
		O.F.	Outside Face		
		S.W.	Short Way		
		T&B	Top & Bottom		
		T.O.W.	Top of Wall		
		Trans.	Transverse		
		VERT.	Vertical		

QUINCY PUBLIC SAFETY HQ
 AREA-A FOOTING & PIER REINFORCEMENT DETAILS
 ONE SEA QUINCY, MA 02169

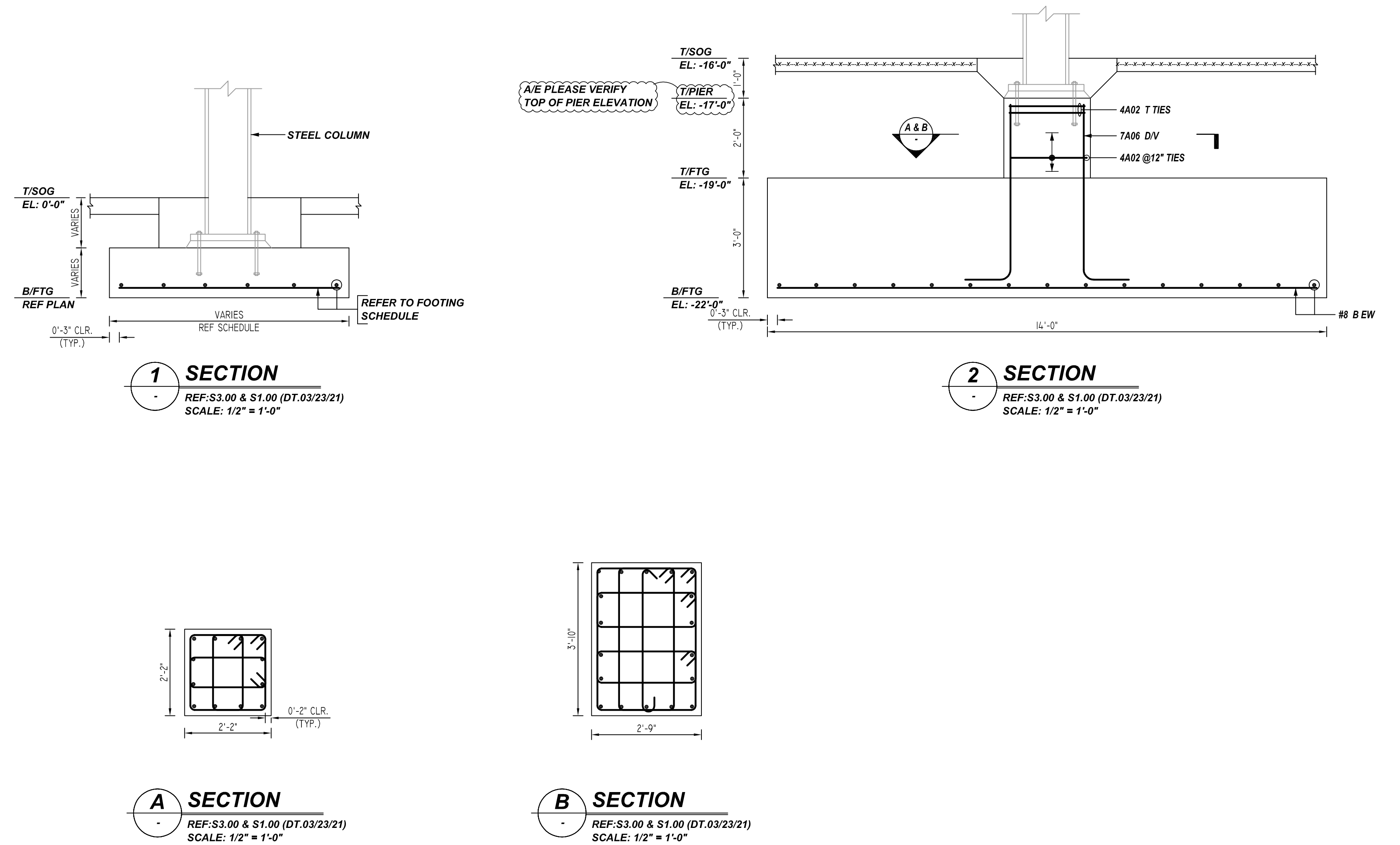
CUSTOMER: MARGUERITE CONCRETE INC.
 DESIGNER: ODEH ENGINEERS

REV NO	DATE	SENT FOR	REV NO	DATE	SENT FOR
0	08.29.22	APPROVAL			

DRAWN BY	DATE	JOB NO	SHEET NO.
GOW/SS	08.29.22	M92270640P	R01

AREA-A FOOTING SCHEDULE					
MARK	QTY	SIZE	GRID LOCATION	REINFORCING	REMARK
F5	5	5'-0" X 5'-0" X 1'-6"	B/7,8,9 & 10	5x2x6 #5 X 4'-6" B EW	REFER SECTION-1 & 2
F6	1	6'-0" X 6'-0" X 1'-6"	B/3	2x7 #6 X 5'-6" B EW	REFER SECTION-1 & 2
F7	2	7'-0" X 7'-0" X 1'-8"	B,D/2	2x2x8 #6 X 6'-6" B EW	REFER SECTION-1 & 2
F8	2	8'-0" X 8'-0" X 2'-0"	E,B/2,4	2x2x9 #6 X 7'-6" B EW	REFER SECTION-1 & 2
F9	1	9'-0" X 9'-0" X 2'-2"	F/2	2x10 #7 X 8'-6" B EW	REFER SECTION-1 & 2
F10	3	10'-0" X 10'-0" X 2'-4"	C,B/3,12,13	3x2x11 #7 X 9'-6" B EW	REFER SECTION-1 & 2
F12A	1	21'-6" X 12'-0" X 2'-8"	E/6,7	13 #8 X 21'-0" B LW 23 #8 X 11'-6" B SW	REFER SECTION-1 & 2
F13	3	13'-0" X 13'-0" X 2'-10"	E,D/3,4	3x2x14 #8 X 12'-6" B EW	REFER SECTION-1 & 2
F14	1	14'-0" X 14'-0" X 3'-0"	E/10	2x15 #8 X 13'-6" B EW	REFER SECTION-1 & 2

AREA-A PIER SCHEDULE										
MARK	QTY	SIZE	BOTTOM OF PIER	FOOTING MARK	GRID LOCATION	VERTS	TIES & ADD'L TIES	REMARK		
P1	3	2'-2" X 2'-2"	EL: -21'-0"	CF12R	A,B/4,4,9,5,5,5	3x12 #7 7A03 DWL	3x3 #4 4A03 TEMP TIES	REFER SECTION-2 & A		
P1A	12	2'-2" X 2'-2"	EL: -19'-0"	CF12R	A,B,D,E/7,8,9,10,11,11.8,12,13,14	12x12 #7 7A03 DWL	12x3 #4 4A03 TEMP TIES	REFER SECTION-2 & A		
P1B	2	2'-2" X 2'-2"	EL: -21'-0"	F8	B,E/2,4	2x12 #7 7A02 D/V	2x2 #4 4A02 @12" TIES 2x2x2 #4 4A01 T INNER TIES 2x2 #4 4A02 T TIES 2x2x2 #4 4A01 @12" INNER TIES	REFER SECTION-2 & A		
P1C	2	2'-2" X 2'-2"	EL: -20'-8"	F7	B,D/2	2x12 #7 7A01 D/V	2x2 #4 4A02 @12" TIES 2x2x2 #4 4A01 T INNER TIES 2x2 #4 4A02 T TIES 2x2x2 #4 4A01 @12" INNER TIES	REFER SECTION-2 & A		
P1D	2	2'-2" X 2'-2"	EL: -21'-8"	F12A	E/6,7	2x12 #7 7A04 D/V	2x2 #4 4A02 T TIES 2x2x2 #4 4A01 T INNER TIES 2x2 #4 4A02 @12" TIES 2x2x2 #4 4A01 @12" INNER TIES	REFER SECTION-2 & A		
P1E	2	2'-2" X 2'-2"	EL: -24'-0"	MAT-B	E/8,9	2x12 #7 7A05 D/V	2x2 #4 4A02 T TIES 2x2x2 #4 4A01 T INNER TIES 2x4 #4 4A02 @12" TIES 2x2x4 #4 4A01 @12" INNER TIES	REFER SECTION-2 & A		
P1F	1	2'-2" X 2'-2"	EL: -22'-0"	F14	E/10	12 #7 7A06 D/V	2 #4 4A02 T TIES 2x2 #4 4A01 T INNER TIES 2 #4 4A02 @12" TIES 2x2 #4 4A01 @12" INNER TIES	REFER SECTION-2 & A		
P1G	1	2'-2" X 2'-2"	EL: -21'-2"	F9	F/2	12 #7 7A07 D/V	2 #4 4A02 T TIES 2x2 #4 4A01 T INNER TIES 2 #4 4A02 @12" TIES 2x2 #4 4A01 @12" INNER TIES	REFER SECTION-2 & A		
P1H	1	2'-2" X 2'-2"	EL: -21'-4"	F10	B/3	12 #7 7A08 D/V	2 #4 4A02 T TIES 2x2 #4 4A01 T INNER TIES 2 #4 4A02 @12" TIES 2x2 #4 4A01 @12" INNER TIES	REFER SECTION-2 & A		
P3	1	3'-10" X 2'-9"	EL: -19'-0"	CF12R	F/15	18 #7 7A09 DWL	2x2 #4 4A04 T TIES 2 #4 4A05 T INNER TIES 2 #4 4A09 T INNER TIES 2 #4 4A10 T LINKS 2x2 #4 4A04 TIES 2 #4 4A05 INNER TIES 2 #4 4A09 INNER TIES 2 #4 4A10 LINKS	REFER SECTION-2 & B		



TYPICAL REINFORCING BAR CLEARANCE TABLE	
LOCATION	MIN. COVER
FOOTING ALL SIDES	3" CLR
PIER ALL SIDES	2" CLR

A/E PLEASE VERIFY COVER FOLLOWED

**ALL BARS IN THIS DRAWING
ASTM A615 GRADE 60
BLACK UNCOATED**

NOTICE
SHORTAGES, IMPROPER FABRICATION OR CLAIMS FOR ANY OTHER REASON MUST BE REPORTED TO THIS COMPANY WITHIN 10 DAYS FROM ORIGINAL DELIVERY. THIS COMPANY ALSO RESERVES THE RIGHT TO FIELD INSPECT MATERIALS PRIOR TO REPLACEMENT OR RECONDITIONING OF MATERIALS AND WILL NOT BE LIABLE FOR CHARGES FROM WORK DONE IN THE FIELD WITHOUT PRIOR AUTHORIZATION FROM THIS COMPANY.

REINFORCING STEEL PLACING DRAWING ONLY. USE IN CONJUNCTION WITH CONTRACT DRAWINGS & SPECIFICATIONS. ELEVATIONS & DIMENSIONS SHOWN ON DRAWING ARE FOR DETAILING PURPOSES ONLY AND SHOULD NOT BE USED FOR CONSTRUCTION UNLESS VERIFIED BY ENGINEER OR CONTRACTOR.

REBAR GRADE 60 ASTM A-615			
SPLICES USED		BAR MARK SIZE EQUIVALENT	
CLASS B 4,000 psi UNO		Imperial	Soft Metric
TOP BARS	OTHER BARS	#3	#10
#3 24"	#3 19"	#4	#13
#4 32"	#4 25"	#5	#16
#5 40"	#5 31"	#6	#19
#6 48"	#6 37"	#7	#22
#7 70"	#7 54"	#8	#25
#8 80"	#8 62"	#9	#29
#9 91"	#9 70"	#10	#32
#10 102"	#10 79"	#11	#36
#11 113"	#11 87"		
#14	#14		

QUINCY PUBLIC SAFETY HQ
AREA-A FOOTING & PIER REINFORCEMENT DETAILS
ONE SEA QUINCY, MA 02169

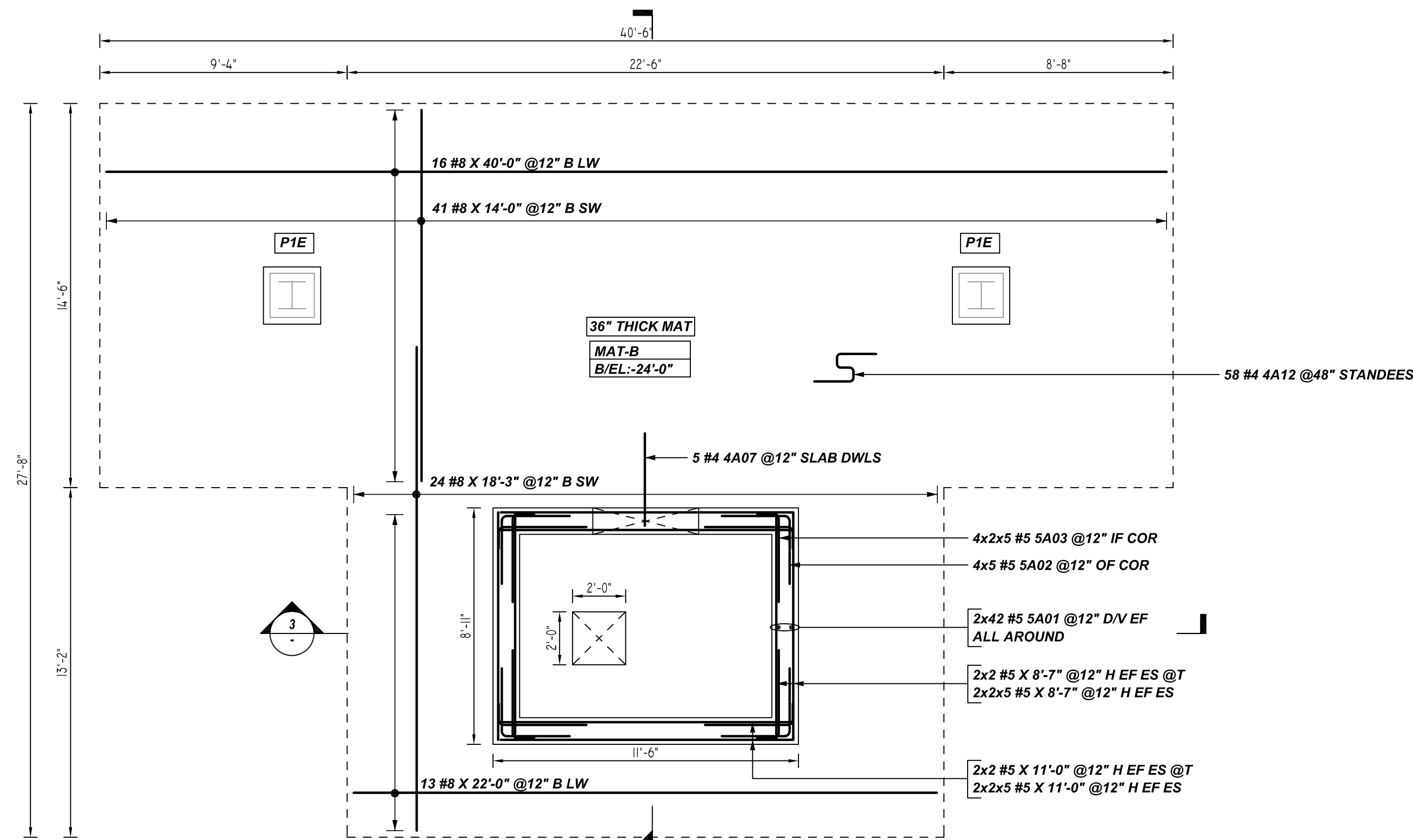
CUSTOMER: MARGUERITE CONCRETE INC.
DESIGNER: ODEH ENGINEERS

0	08.29.22	APPROVAL							
REV NO	DATE	SENT FOR	REV NO	DATE	SENT FOR	DRAWN BY	DATE	JOB NO	SHEET NO.
						GOW/SS	08.29.22	M92270640P	R02

NOTICE

SHORTAGES, IMPROPER FABRICATION OR CLAIMS FOR ANY OTHER REASON MUST BE REPORTED TO THIS COMPANY WITHIN 10 DAYS FROM ORIGINAL DELIVERY. THIS COMPANY ALSO RESERVES THE RIGHT TO FIELD INSPECT MATERIALS PRIOR TO REPLACEMENT OR RECONDITIONING OF MATERIALS AND WILL NOT BE LIABLE FOR CHARGES FROM WORK DONE IN THE FIELD WITHOUT PRIOR AUTHORIZATION FROM THIS COMPANY.

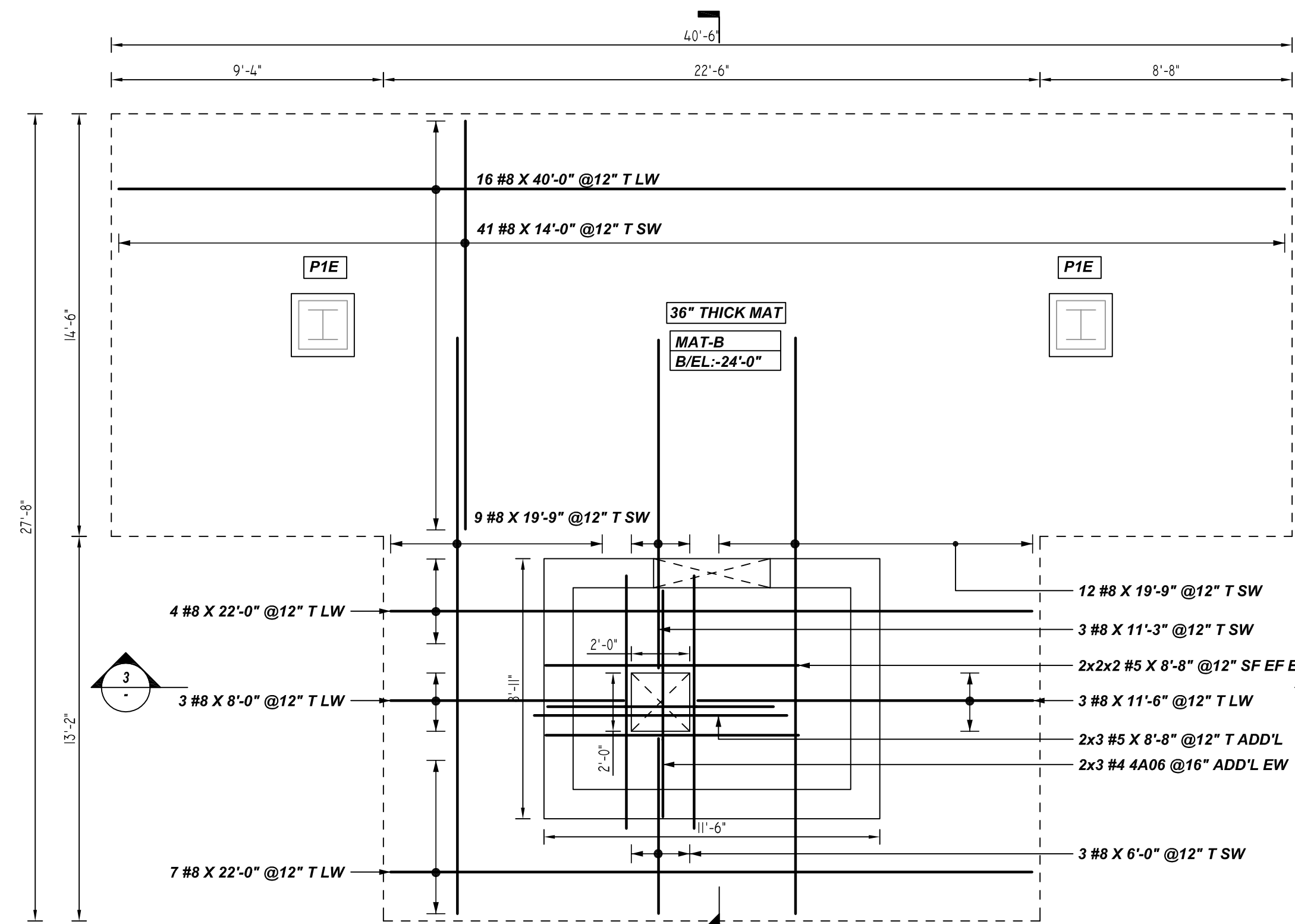
REINFORCING STEEL PLACING DRAWING ONLY. USE IN CONJUNCTION WITH CONTRACT DRAWINGS & SPECIFICATIONS. ELEVATIONS & DIMENSIONS SHOWN ON DRAWING ARE FOR DETAILING PURPOSES ONLY AND SHOULD NOT BE USED FOR CONSTRUCTION UNLESS VERIFIED BY ENGINEER OR CONTRACTOR.



@BOTTOM REINFORCEMENT DETAILS

DETAIL-A

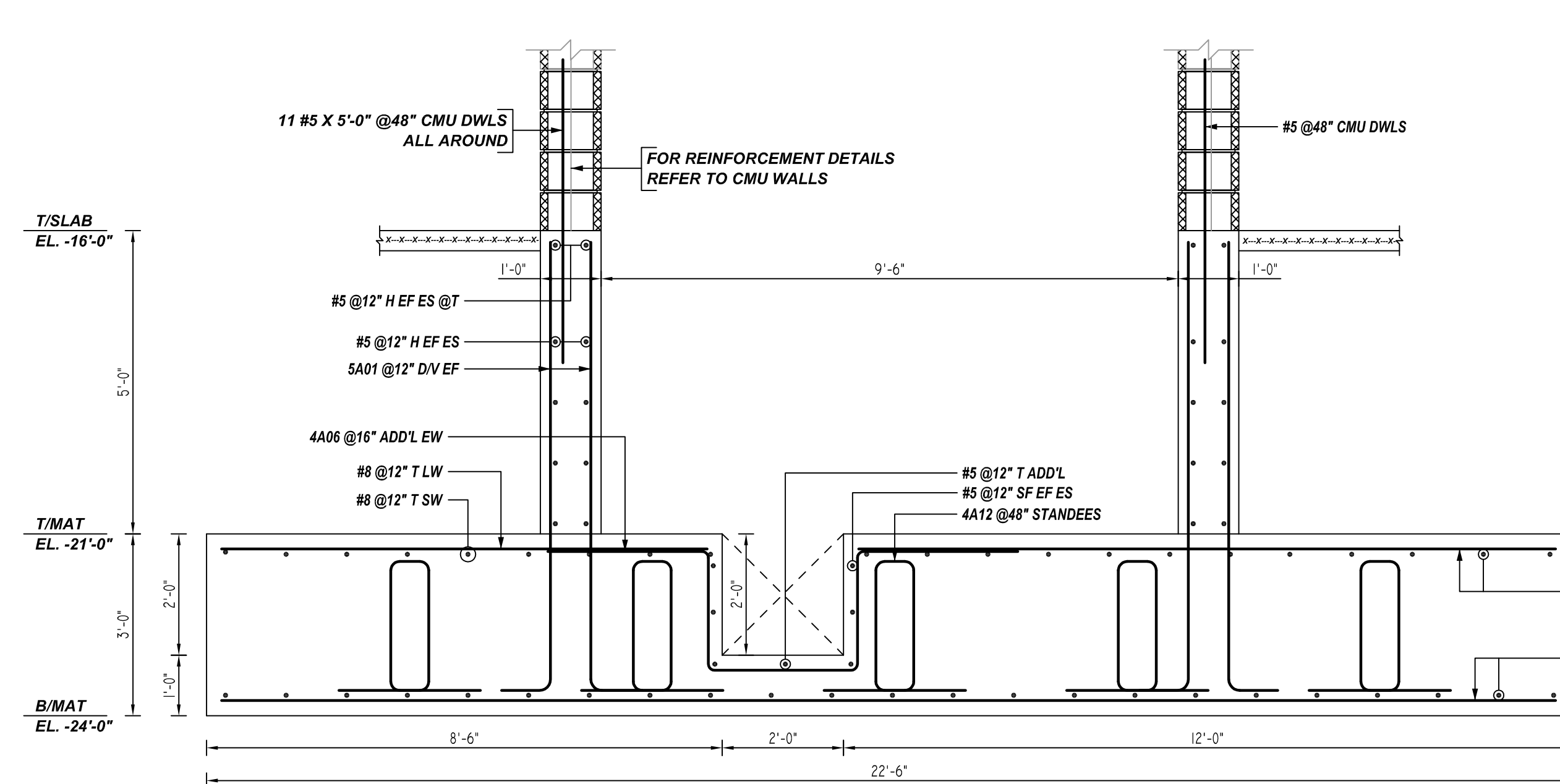
REF:A1.00, A4.08, S1.00 & S3.00
SCALE: 1/4" = 1'-0"



@TOP REINFORCEMENT DETAILS

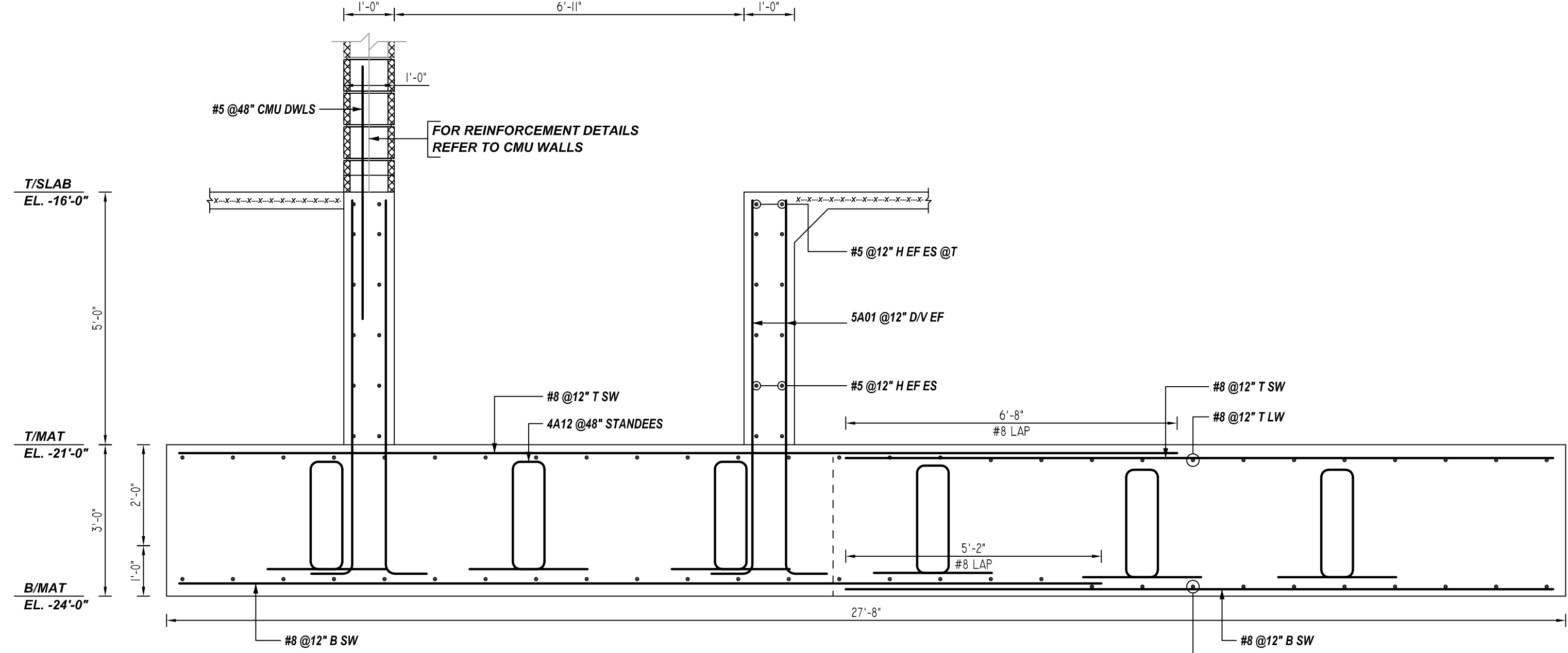
DETAIL-A

REF:A1.00, A4.08, S1.00 & S3.00
SCALE: 1/4" = 1'-0"



3 SECTION

REF:A1.00, A4.08, S1.00 & S3.00
SCALE: 1/4" = 1'-0"



4 SECTION

REF:A1.00, A4.08, S1.00 & S3.00
SCALE: 1/4" = 1'-0"

A/E PLEASE VERIFY COVER FOLLOWED

TYPICAL REINFORCING BAR CLEARANCE TABLE	
LOCATION	MIN. COVER
FOOTING ALL SIDES	3" CLR
PIER ALL SIDES	2" CLR

**ALL BARS IN THIS DRAWING
ASTM A615 GRADE 60
BLACK UNCOATED**

LAP SCHEDULE

4000 PSI (CLASS-B) CASE - 1
Per ACI 318 (12.2.2)

BAR#	LENGTHS	
	TOP	OTHERS
#3	2'-0"	1'-7"
#4	2'-8"	2'-1"
#5	3'-4"	2'-7"
#6	4'-0"	3'-1"
#7	5'-10"	4'-8"
#8	6'-8"	5'-2"
#9	7'-7"	5'-10"
#10	8'-6"	6'-7"
#11	9'-5"	7'-3"

ALL TOP BARS ARE DEFINED AS HORIZ BARS WITH MORE THAN 12" OF CONCRETE BELOW BARS.

REBAR GRADE 60 ASTM A-615

SPLICES USED		ABBREVIATIONS		BAR MARK SIZE EQUIVALENT	
CLASS B 4,000 psi UNO		ADD.	Additional		
TOP BARS		B.O.W.	Bottom of wall		
OTHER BARS		C.B.	Corner Bars	Imperial	Soft Metric
#3	24"	DIAG.	Diagonal	#3	#10
#4	32"	D.O.	Door Opening	#4	#13
#5	40"	DWLS.	Dowels	#5	#16
#6	48"	E.F.	Each Face	#6	#19
#7	70"	E.S.	Each Side	#7	#22
#8	80"	E.W.	Each Way	#8	#25
#9	91"	FTG.	Footing	#9	#29
#10	102"	F.F.	Far Face	#10	#32
#11	113"	HORIZ.	Horizontal	#11	#36
#14		I.F.	Inside Face		
		INTERS.	Intersection		
		L.W.	long Way		
		N.F.	Near Face		
		O.F.	Outside Face		
		S.W.	Short Way		
		T&B	Top & Bottom		
		T.O.W.	Top of Wall		
		Trans.	Transverse		
		VERT.	Vertical		

QUINCY PUBLIC SAFETY HQ
AREA-A ELEVATOR PIT REINFORCEMENT DETAILS
ONE SEA QUINCY, MA 02169

CUSTOMER: MARGUERITE CONCRETE INC.
DESIGNER: ODEH ENGINEERS

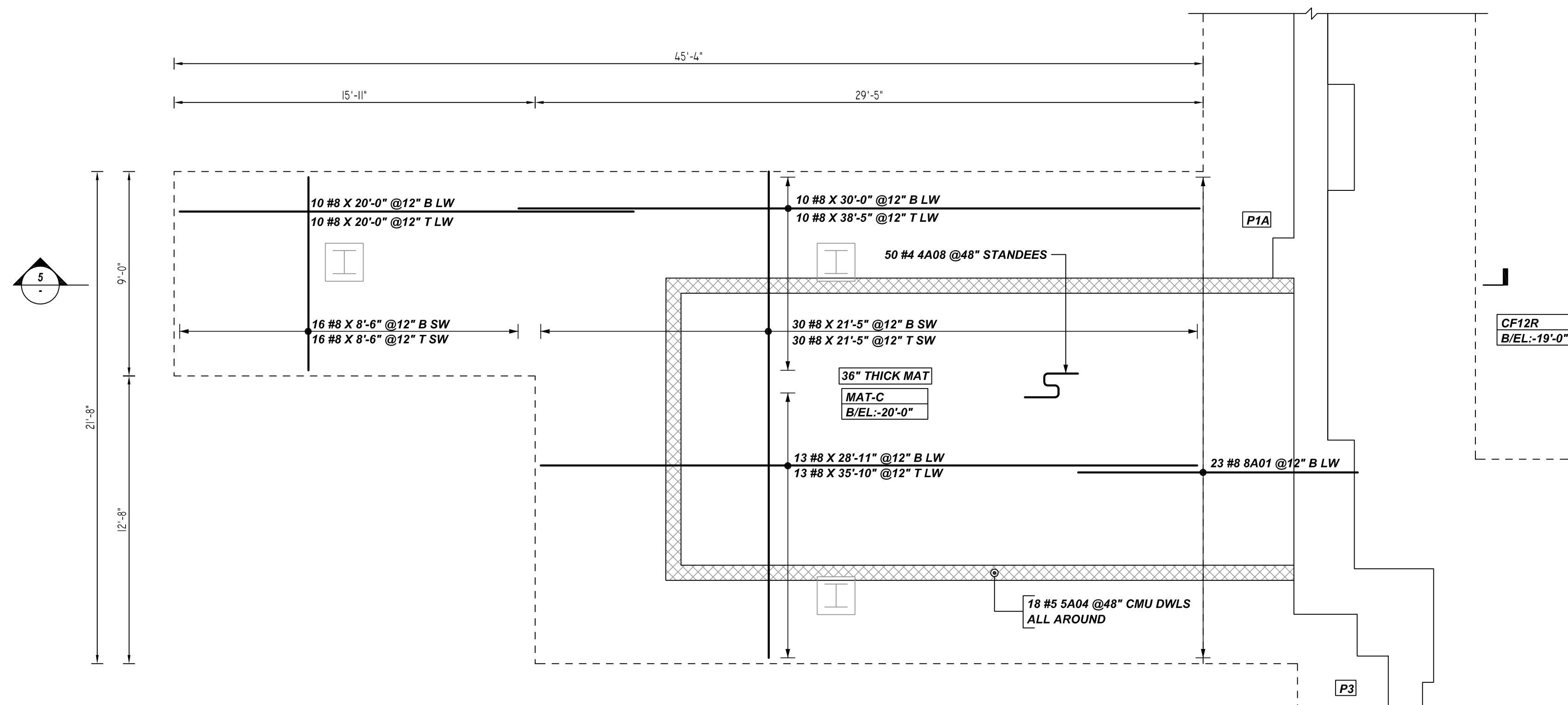
REV NO	DATE	SENT FOR	REV NO	DATE	SENT FOR
0	08.29.22	APPROVAL			

DRAWN BY	DATE	JOB NO	SHEET NO.
GOW/SS	08.29.22	M92270640P	R03

NOTICE

SHORTAGES, IMPROPER FABRICATION OR CLAIMS FOR ANY OTHER REASON MUST BE REPORTED TO THIS COMPANY WITHIN 10 DAYS FROM ORIGINAL DELIVERY. THIS COMPANY ALSO RESERVES THE RIGHT TO FIELD INSPECT MATERIALS PRIOR TO REPLACEMENT OR RECONDITIONING OF MATERIALS AND WILL NOT BE LIABLE FOR CHARGES FROM WORK DONE IN THE FIELD WITHOUT PRIOR AUTHORIZATION FROM THIS COMPANY.

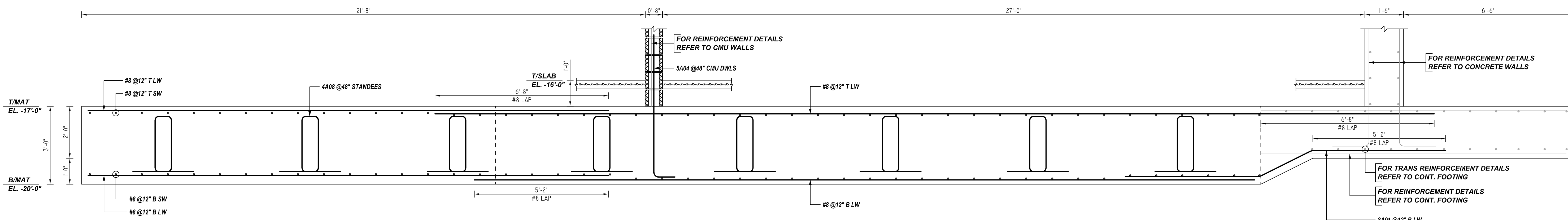
REINFORCING STEEL PLACING DRAWING ONLY. USE IN CONJUNCTION WITH CONTRACT DRAWINGS & SPECIFICATIONS. ELEVATIONS & DIMENSIONS SHOWN ON DRAWING ARE FOR DETAILING PURPOSES ONLY AND SHOULD NOT BE USED FOR CONSTRUCTION UNLESS VERIFIED BY ENGINEER OR CONTRACTOR.



@TOP & BOTTOM REINFORCEMENT DETAILS

DETAIL-B

REF: A1.00, A4.08, S1.00 & S3.00
SCALE: 1/4" = 1'-0"



5 SECTION

REF: A1.00, A4.08, S1.00 & S3.00
SCALE: 1/4" = 1'-0"

A/E PLEASE VERIFY COVER FOLLOWED

TYPICAL REINFORCING BAR CLEARANCE TABLE	
LOCATION	MIN. COVER
FOOTING ALL SIDES	3" CLR
PIER ALL SIDES	2" CLR

**ALL BARS IN THIS DRAWING
ASTM A615 GRADE 60
BLACK UNCOATED**

LAP SCHEDULE

4000 PSI (CLASS-B) CASE - 1
Per ACI 318 (12.2.2)

BAR#	LENGTHS	
	TOP	OTHERS
#3	2'-0"	1'-7"
#4	2'-8"	2'-1"
#5	3'-4"	2'-7"
#6	4'-0"	3'-1"
#7	5'-10"	4'-6"
#8	6'-8"	5'-2"
#9	7'-7"	5'-10"
#10	8'-6"	6'-7"
#11	9'-5"	7'-3"

ALL TOP BARS ARE DEFINED AS HORIZ BARS WITH MORE THAN 12" OF CONCRETE BELOW BARS.

REBAR GRADE 60 ASTM A-615

SPLICES USED		ABBREVIATIONS		BAR MARK SIZE EQUIVALENT	
CLASS B 4,000 psi UNO				Imperial	Soft Metric
TOP BARS	OTHER BARS	ADD.	Additional	#3	#10
#3 24"	#3 19"	B.O.W.	Bottom of wall	#4	#13
#4 32"	#4 25"	C.B.	Corner Bars	#5	#16
#5 40"	#5 31"	DIAG.	Diagonal	#6	#19
#6 48"	#6 37"	D.O.	Door Opening	#7	#22
#7 70"	#7 54"	DWLS.	Dowels	#8	#25
#8 80"	#8 62"	E.F.	Each Face	#9	#29
#9 91"	#9 70"	E.S.	Each Side	#10	#32
#10 102"	#10 79"	E.W.	Each Way	#11	#36
#11 113"	#11 87"	FTG.	Footing		
#14		F.F.	Far Face		
		HORIZ.	Horizontal		
		I.F.	Inside Face		
		INTERS.	Intersection		
		L.W.	Long Way		
		N.F.	Near Face		
		O.F.	Outside Face		
		S.W.	Short Way		
		T&B	Top & Bottom		
		T.O.W.	Top of Wall		
		Trans.	Transverse		
		VERT.	Vertical		

QUINCY PUBLIC SAFETY HQ
AREA-A ELEVATOR PIT REINFORCEMENT DETAILS
ONE SEA QUINCY, MA 02169

CUSTOMER: MARGUERITE CONCRETE INC.

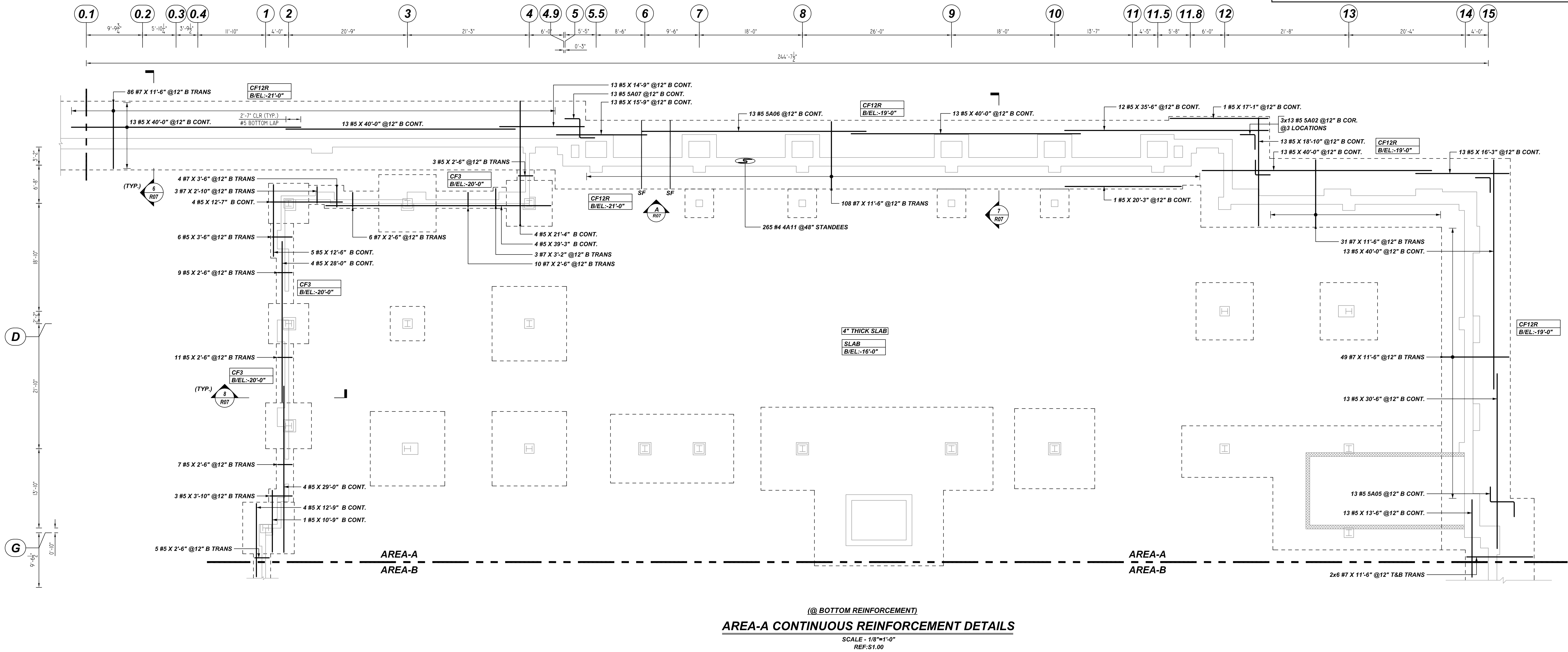
DESIGNER: ODEH ENGINEERS

REV NO	DATE	SENT FOR	REV NO	DATE	SENT FOR
0	08.29.22	APPROVAL			

DRAWN BY	DATE	JOB NO	SHEET NO.
GOW/SS	08.29.22	M92270640P	R04

NOTICE
 SHORTAGES, IMPROPER FABRICATION OR CLAIMS FOR ANY OTHER REASON MUST BE REPORTED TO THIS COMPANY WITHIN 10 DAYS FROM ORIGINAL DELIVERY. THIS COMPANY ALSO RESERVES THE RIGHT TO FIELD INSPECT MATERIALS PRIOR TO REPLACEMENT OR RECONDITIONING OF MATERIALS AND WILL NOT BE LIABLE FOR CHARGES FROM WORK DONE IN THE FIELD WITHOUT PRIOR AUTHORIZATION FROM THIS COMPANY.

REINFORCING STEEL PLACING DRAWING ONLY. USE IN CONJUNCTION WITH CONTRACT DRAWINGS & SPECIFICATIONS. ELEVATIONS & DIMENSIONS SHOWN ON DRAWING ARE FOR DETAILING PURPOSES ONLY AND SHOULD NOT BE USED FOR CONSTRUCTION UNLESS VERIFIED BY ENGINEER OR CONTRACTOR.



TYPICAL REINFORCING BAR CLEARANCE TABLE

LOCATION	MIN. COVER
FOOTING ALL SIDES	3" CLR

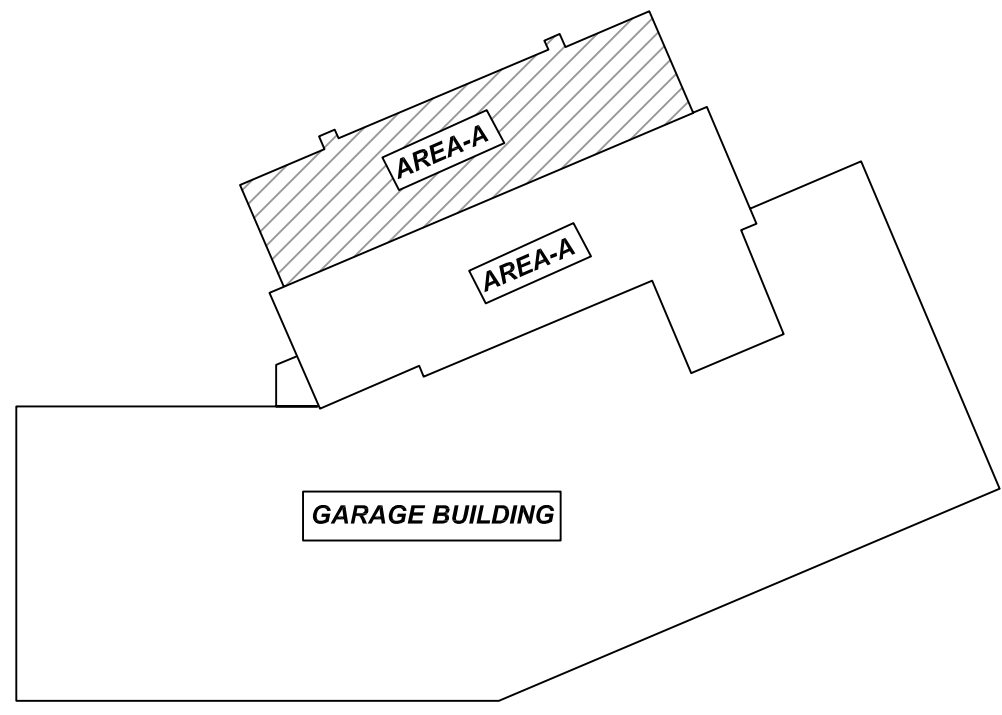
**ALL BARS IN THIS DRAWING
 ASTM A615 GRADE 60
 BLACK UNCOATED**

LAP SCHEDULE

4000 PSI (CLASS-B) CASE - 1
 Per ACI 318 (12.2.2)

BAR#	LENGTHS	
	TOP	OTHERS
#3	2'-0"	1'-7"
#4	2'-8"	2'-1"
#5	3'-4"	2'-7"
#6	4'-0"	3'-1"
#7	5'-10"	4'-6"
#8	6'-8"	5'-2"
#9	7'-7"	5'-10"
#10	8'-6"	6'-7"
#11	9'-5"	7'-3"

ALL TOP BARS ARE DEFINED AS HORIZ BARS WITH MORE THAN 12" OF CONCRETE BELOW BARS.



OVERALL KEY PLAN
 SCALE - 1/8"=1'-0"
 REF:S1.00

REBAR GRADE 60 ASTM A-615

SPLICES USED

CLASS B 4,000 psi UNO

TOP BARS	OTHER BARS
#3 24"	#3 19"
#4 32"	#4 25"
#5 40"	#5 31"
#6 48"	#6 37"
#7 70"	#7 54"
#8 80"	#8 62"
#9 91"	#9 70"
#10 102"	#10 79"
#11 113"	#11 87"
#14	#14

ABBREVIATIONS

- ADD. = Additional
- B.O.W. = Bottom of wall
- C.B. = Corner Bars
- DIAG. = Diagonal
- D.O. = Door Opening
- DWLS. = Dowels
- E.F. = Each Face
- E.S. = Each Side
- E.W. = Each Way
- FTG. = Footing
- F.F. = Far Face
- HORIZ. = Horizontal
- I.F. = Inside Face
- INTERS. = Intersection
- L.W. = long Way
- N.F. = Near Face
- O.F. = Outside Face
- S.W. = Short Way
- T&B = Top & Bottom
- T.O.W. = Top of Wall
- Trans. = Transverse
- VERT. = Vertical

BAR MARK SIZE EQUIVALENT

Imperial	Soft Metric
#3	#10
#4	#13
#5	#16
#6	#19
#7	#22
#8	#25
#9	#29
#10	#32
#11	#36

QUINCY PUBLIC SAFETY HQ
 AREA-A CONTINUOUS FOOTING REINFORCEMENT DETAILS
ONE SEA QUINCY, MA 02169

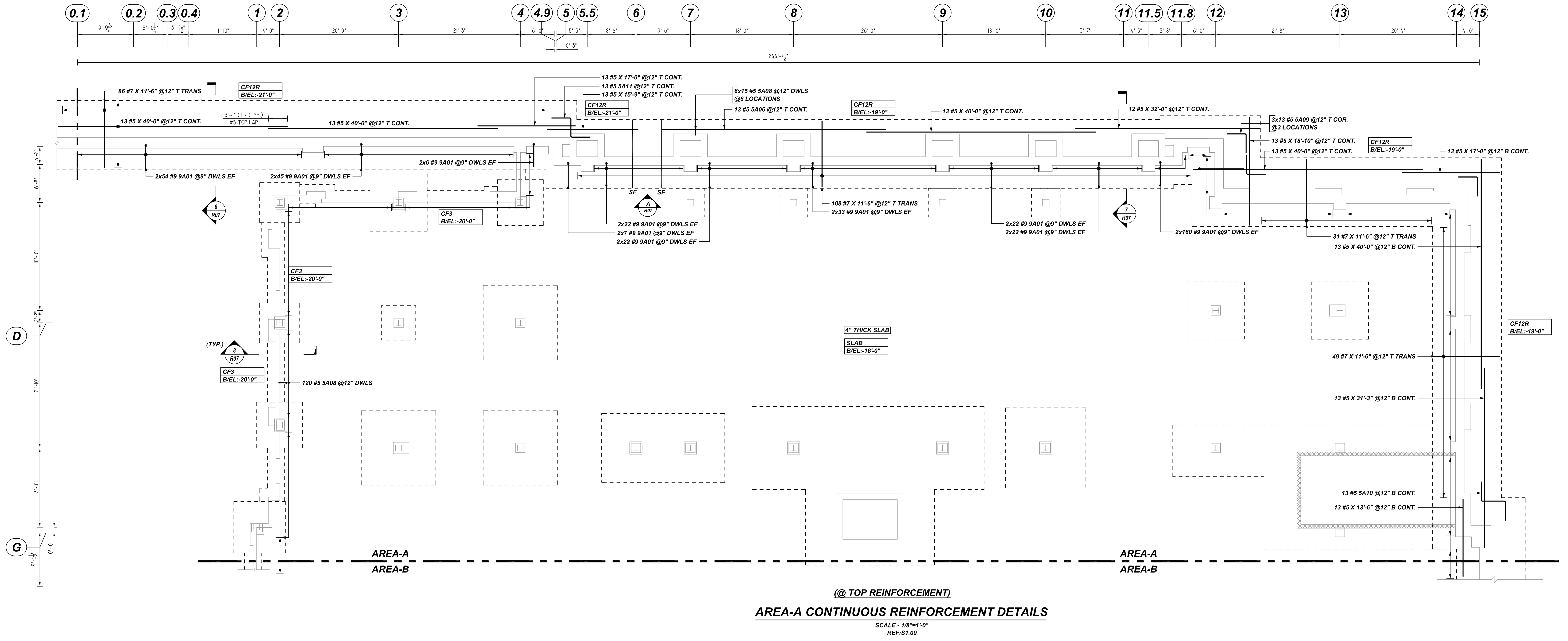
CUSTOMER: MARGUERITE CONCRETE INC.
 DESIGNER: ODEH ENGINEERS

REV NO	DATE	SENT FOR	REV NO	DATE	SENT FOR
0	08.29.22	APPROVAL			

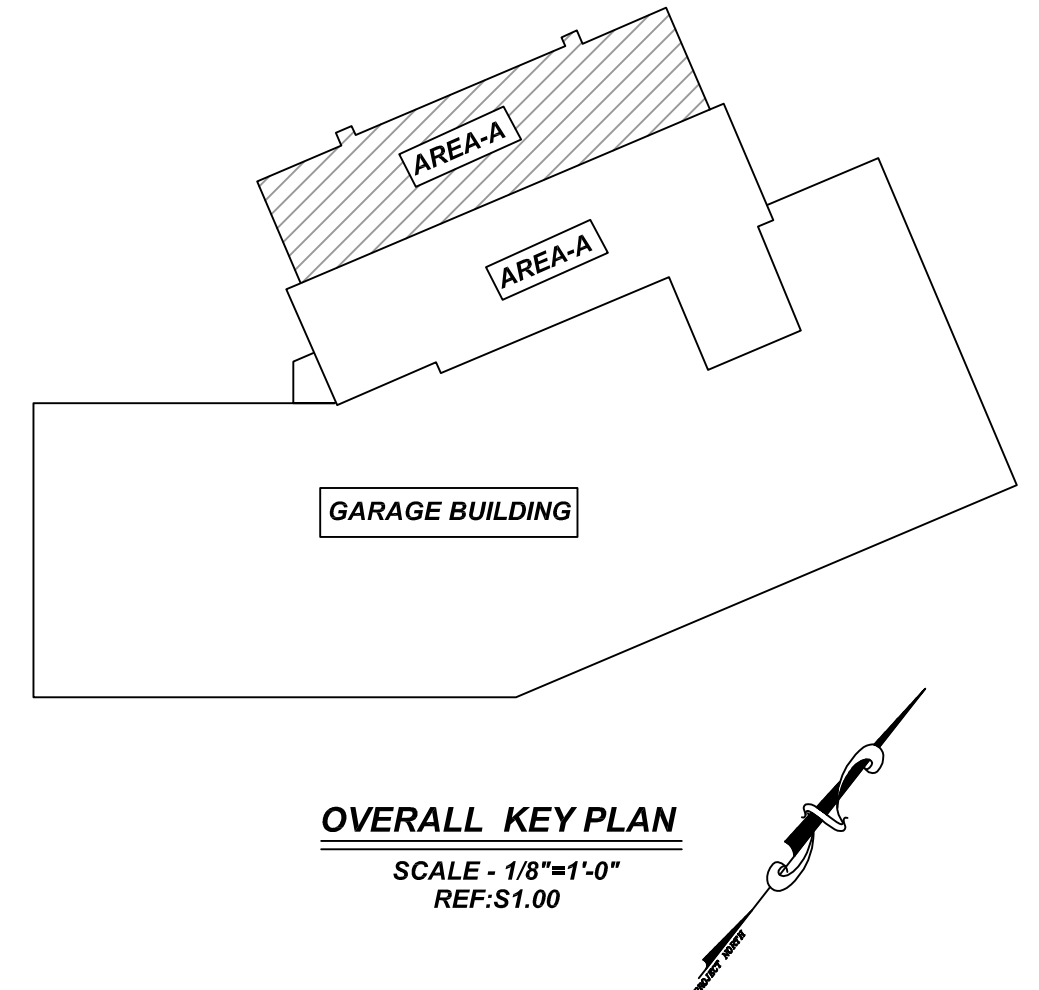
DRAWN BY	DATE	JOB NO	SHEET NO.
GOW/SS	08.29.22	M92270640P	R05

NOTICE
 SHORTAGES, IMPROPER FABRICATION OR CLAIMS FOR ANY OTHER REASON MUST BE REPORTED TO THIS COMPANY WITHIN 10 DAYS FROM ORIGINAL DELIVERY. THIS COMPANY ALSO RESERVES THE RIGHT TO FIELD INSPECT MATERIALS PRIOR TO REPLACEMENT OR RECONDITIONING OF MATERIALS AND WILL NOT BE LIABLE FOR CHARGES FROM WORK DONE IN THE FIELD WITHOUT PRIOR AUTHORIZATION FROM THIS COMPANY.

REINFORCING STEEL PLACING DRAWING ONLY. USE IN CONJUNCTION WITH CONTRACT DRAWINGS & SPECIFICATIONS. ELEVATIONS & DIMENSIONS SHOWN ON DRAWING ARE FOR DETAILING PURPOSES ONLY AND SHOULD NOT BE USED FOR CONSTRUCTION UNLESS VERIFIED BY ENGINEER OR CONTRACTOR.



AREA-A CONTINUOUS REINFORCEMENT DETAILS
 SCALE - 1/8"=1'-0"
 REF:S1.00



LAP SCHEDULE
 4000 PSI (CLASS-B) CASE - 1
 Per ACI 318 (12.2.2)

BAR#	LENGTHS	
	TOP	OTHERS
#3	2'-0"	1'-7"
#4	2'-8"	2'-1"
#5	3'-4"	2'-7"
#6	4'-0"	3'-1"
#7	5'-10"	4'-6"
#8	6'-8"	5'-2"
#9	7'-7"	5'-10"
#10	8'-6"	6'-7"
#11	9'-5"	7'-3"

ALL TOP BARS ARE DEFINED AS HORIZ BARS WITH MORE THAN 12" OF CONCRETE BELOW BARS.

TYPICAL REINFORCING BAR CLEARANCE TABLE

LOCATION	MIN. COVER
FOOTING ALL SIDES	3" CLR

**ALL BARS IN THIS DRAWING
 ASTM A615 GRADE 60
 BLACK UNCOATED**

REBAR GRADE 60 ASTM A-615

SPLICES USED		ABBREVIATIONS		BAR MARK SIZE EQUIVALENT	
CLASS B 4,000 psi UNO				Imperial	Soft Metric
TOP BARS	OTHER BARS	ADD.	Additional	#3	#10
#3 24"	#3 19"	B.O.W.	Bottom of wall	#4	#13
#4 32"	#4 25"	C.B.	Corner Bars	#5	#16
#5 40"	#5 31"	DIAG.	Diagonal	#6	#19
#6 48"	#6 37"	D.O.	Door Opening	#7	#22
#7 70"	#7 54"	DWLS.	Dowels	#8	#25
#8 80"	#8 62"	E.F.	Each Face	#9	#29
#9 91"	#9 70"	E.S.	Each Side	#10	#32
#10 102"	#10 79"	E.W.	Each Way	#11	#36
#11 113"	#11 87"	FTG.	Footing		
#14		F.F.	Far Face		
		HORIZ.	Horizontal		
		I.F.	Inside Face		
		INTERS.	Intersection		
		L.W.	Long Way		
		N.F.	Near Face		
		O.F.	Outside Face		
		S.W.	Short Way		
		T&B	Top & Bottom		
		T.O.W.	Top of Wall		
		Trans.	Transverse		
		VERT.	Vertical		

HARMAC
 A WHITE CAP COMPANY

103 Cornshop Road
 Fryeburg, ME 04037
 Tel. 800-294-4702

301 Hartle Street
 Sayreville, NJ 03301
 Tel. 732-651-7822

QUINCY PUBLIC SAFETY HQ
 AREA-A CONTINUOUS FOOTING REINFORCEMENT DETAILS
ONE SEA QUINCY, MA 02169

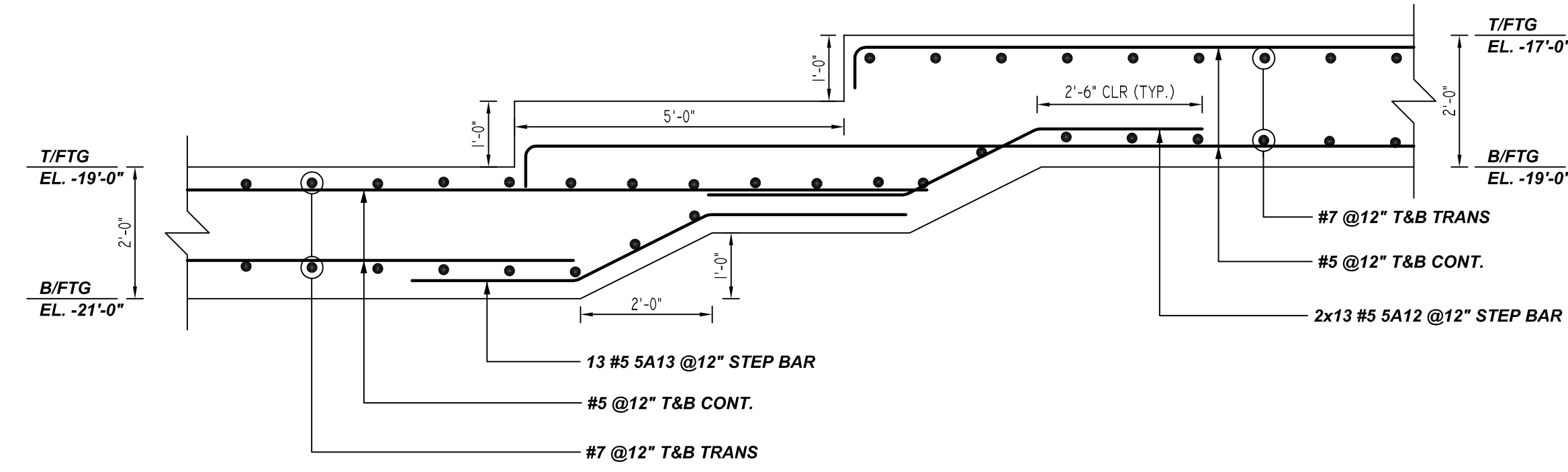
CUSTOMER: MARGUERITE CONCRETE INC.
 DESIGNER: ODEH ENGINEERS

DRAWN BY	DATE	JOB NO	SHEET NO.
GOW/SS	08.29.22	M92270640P	R06

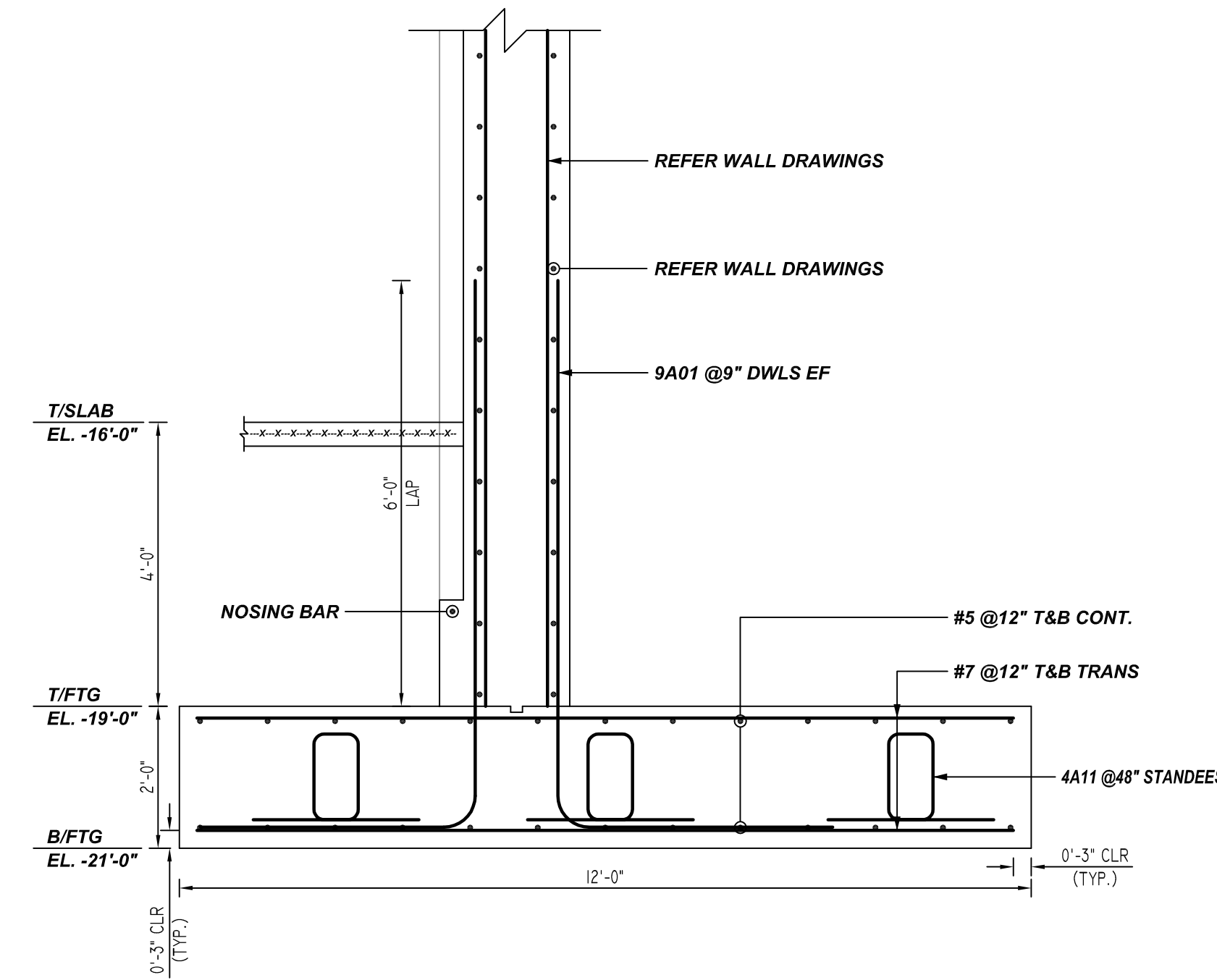
NOTICE

SHORTAGES, IMPROPER FABRICATION OR CLAIMS FOR ANY OTHER REASON MUST BE REPORTED TO THIS COMPANY WITHIN 10 DAYS FROM ORIGINAL DELIVERY. THIS COMPANY ALSO RESERVES THE RIGHT TO FIELD INSPECT MATERIALS PRIOR TO REPLACEMENT OR RECONDITIONING OF MATERIALS AND WILL NOT BE LIABLE FOR CHARGES FROM WORK DONE IN THE FIELD WITHOUT PRIOR AUTHORIZATION FROM THIS COMPANY.

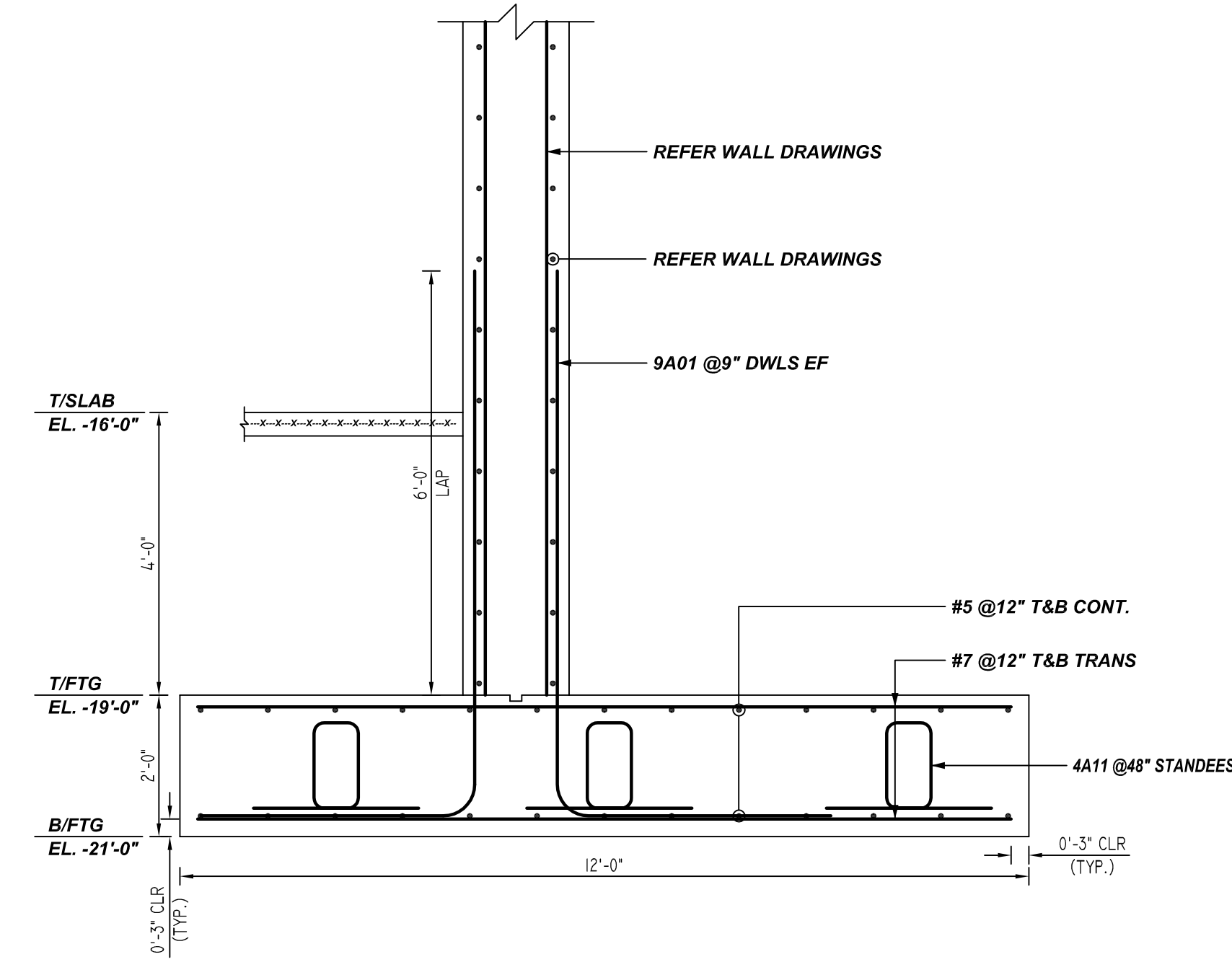
REINFORCING STEEL PLACING DRAWING ONLY. USE IN CONJUNCTION WITH CONTRACT DRAWINGS & SPECIFICATIONS. ELEVATIONS & DIMENSIONS SHOWN ON DRAWING ARE FOR DETAILING PURPOSES ONLY AND SHOULD NOT BE USED FOR CONSTRUCTION UNLESS VERIFIED BY ENGINEER OR CONTRACTOR.



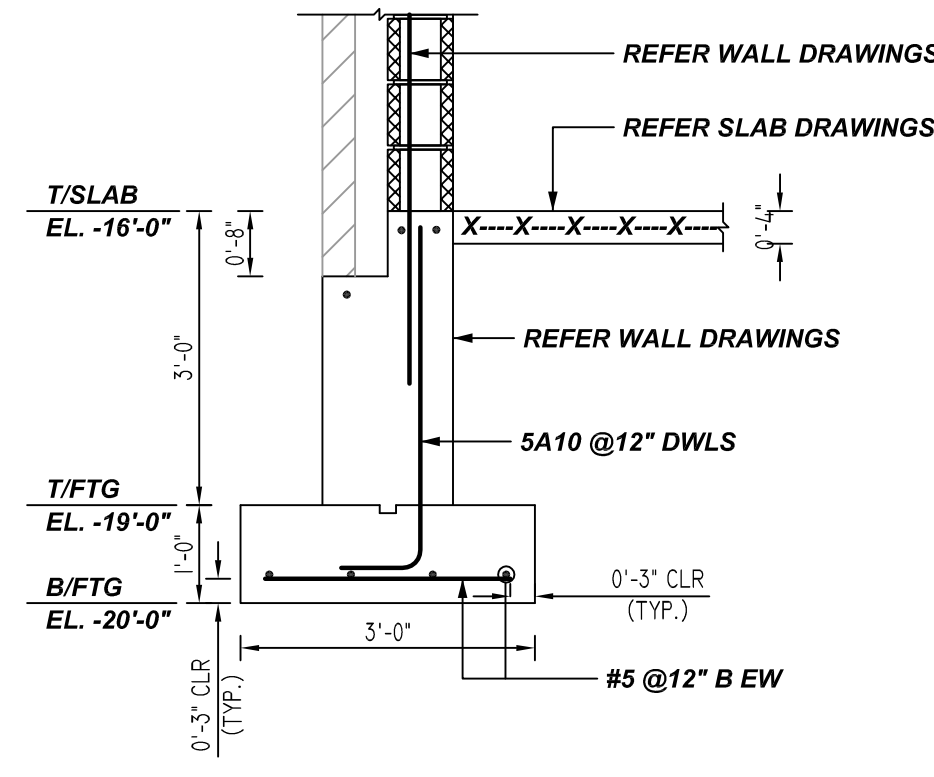
A ELEVATION
REF: S1.00 & S3.01
SCALE: 1/2" = 1'-0"



6 SECTION
REF: S3.02
SCALE: 1/2" = 1'-0"



7 SECTION
REF: S3.02
SCALE: 1/2" = 1'-0"



8 SECTION
REF: S3.02
SCALE: 1/2" = 1'-0"

TYPICAL REINFORCING BAR CLEARANCE TABLE	
LOCATION	MIN. COVER
FOOTING ALL SIDES	3" CLR

A/E PLEASE VERIFY COVER FOLLOWED

**ALL BARS IN THIS DRAWING
ASTM A615 GRADE 60
BLACK UNCOATED**

LAP SCHEDULE

4000 PSI (CLASS-B) CASE - 1
Per ACI 318 (12.2.2)

BAR#	LENGTHS	
	TOP	OTHERS
#3	2'-0"	1'-7"
#4	2'-8"	2'-1"
#5	3'-4"	2'-7"
#6	4'-0"	3'-1"
#7	5'-10"	4'-6"
#8	6'-8"	5'-2"
#9	7'-7"	5'-10"
#10	8'-6"	6'-7"
#11	9'-5"	7'-3"

ALL TOP BARS ARE DEFINED AS HORIZ BARS WITH MORE THAN 12" OF CONCRETE BELOW BARS.

REBAR GRADE 60 ASTM A-615

SPICES USED		ABBREVIATIONS		BAR MARK SIZE EQUIVALENT	
CLASS B 4,000 psi UNO				Imperial	Soft Metric
TOP BARS	OTHER BARS	ADD.	Additional	#3	#10
#3 24"	#3 19"	B.O.W.	Bottom of wall	#4	#13
#4 32"	#4 25"	C.B.	Corner Bars	#5	#16
#5 40"	#5 31"	DIAG.	Diagonal	#6	#19
#6 48"	#6 37"	D.O.	Door Opening	#7	#22
#7 70"	#7 54"	DWLS.	Dowels	#8	#25
#8 80"	#8 62"	E.F.	Each Face	#9	#29
#9 91"	#9 70"	E.S.	Each Side	#10	#32
#10 102"	#10 79"	E.W.	Each Way	#11	#36
#11 113"	#11 87"	FTG.	Footing		
#14	#14	F.F.	Far Face		
		HORIZ.	Horizontal		
		I.F.	Inside Face		
		INTERS.	Intersection		
		L.W.	Long Way		
		N.F.	Near Face		
		O.F.	Outside Face		
		S.W.	Short Way		
		T&B	Top & Bottom		
		T.O.W.	Top of Wall		
		Trans.	Transverse		
		VERT.	Vertical		

QUINCY PUBLIC SAFETY HQ
AREA-A CONTINUOUS FOOTING REINFORCEMENT DETAILS
ONE SEA QUINCY, MA 02169

CUSTOMER: MARGUERITE CONCRETE INC.

DESIGNER: ODEH ENGINEERS

REV NO	DATE	SENT FOR	REV NO	DATE	SENT FOR
0	08.29.22	APPROVAL			

DRAWN BY	DATE	JOB NO	SHEET NO.
GOW/SS	08.29.22	M92270640P	R07