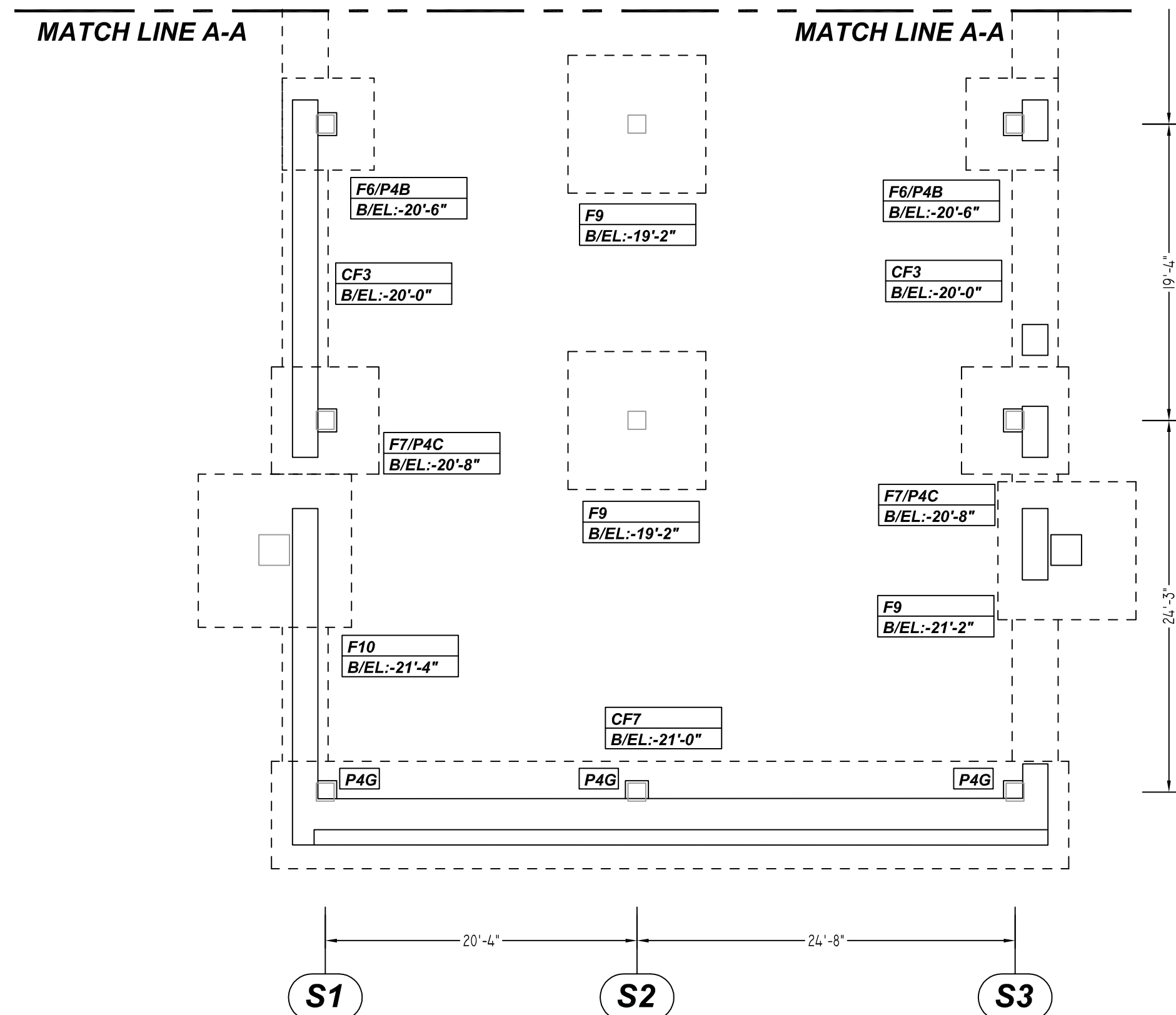
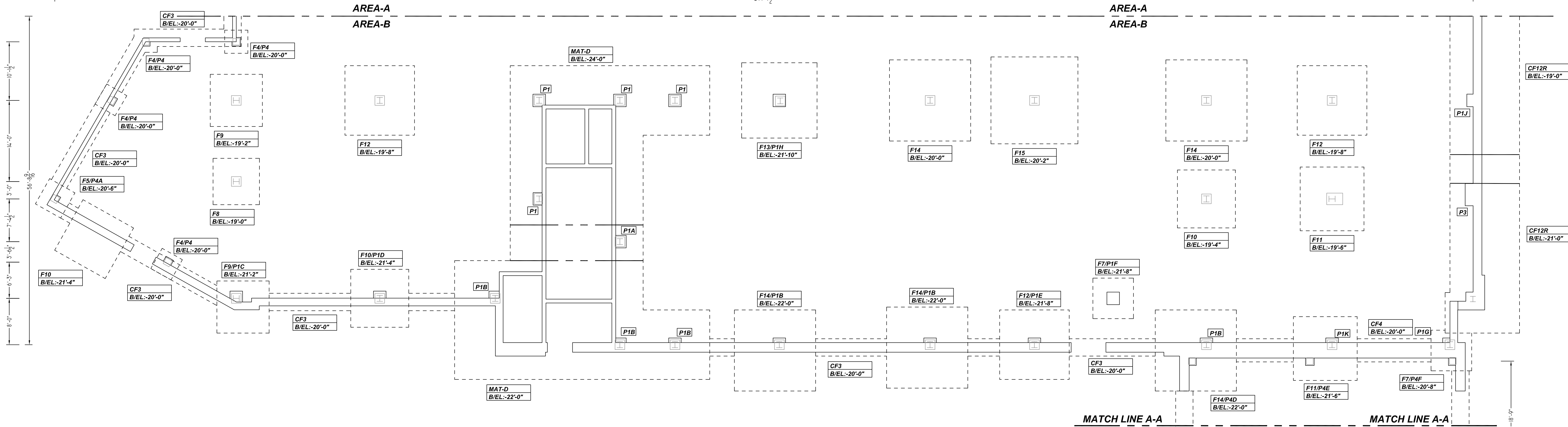
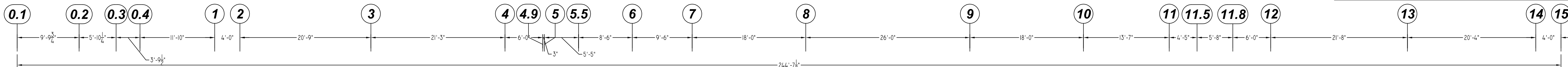


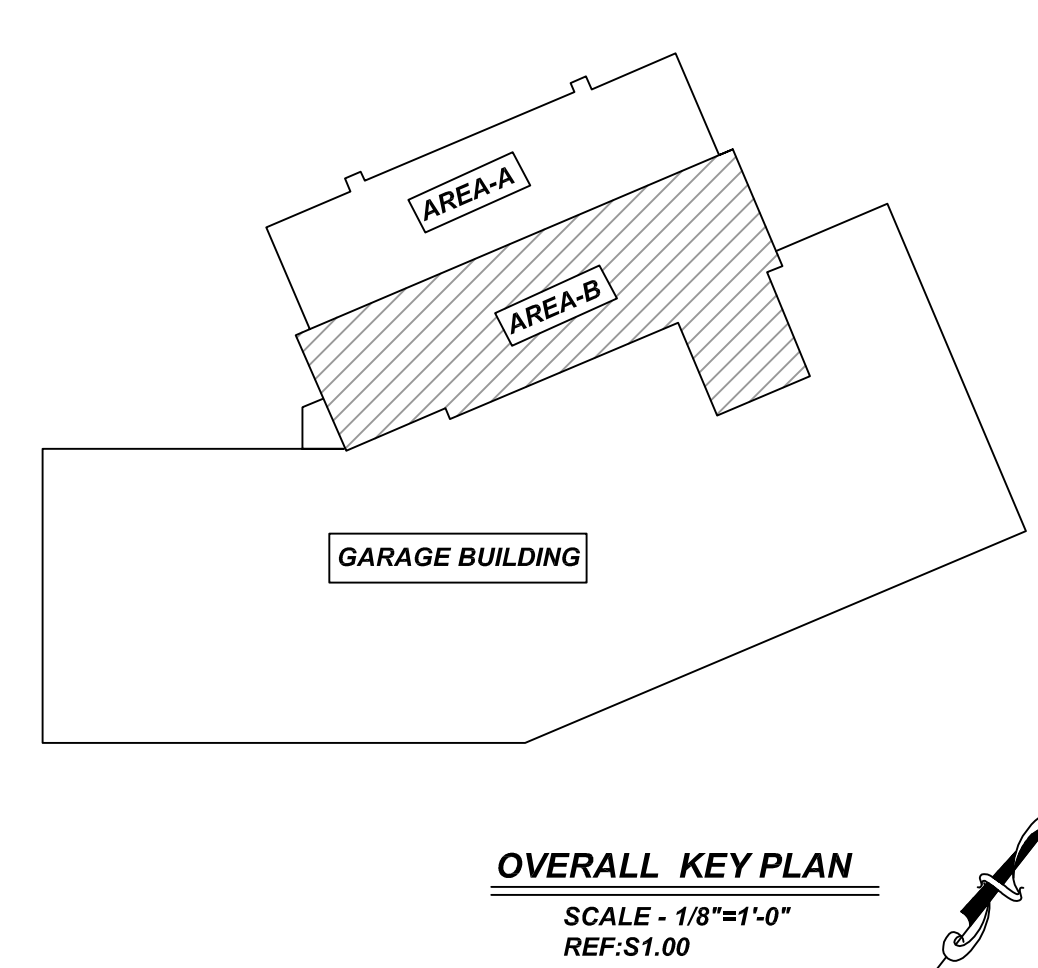
NOTICE

SHORTAGES, IMPROPER FABRICATION OR CLAIMS FOR ANY OTHER REASON MUST BE REPORTED TO THIS COMPANY WITHIN 10 DAYS FROM ORIGINAL DELIVERY. THIS COMPANY ALSO RESERVES THE RIGHT TO FIELD INSPECT MATERIALS PRIOR TO REPLACEMENT OR RECONDITIONING OF MATERIALS AND WILL NOT BE LIABLE FOR CHARGES FROM WORK DONE IN THE FIELD WITHOUT PRIOR AUTHORIZATION FROM THIS COMPANY.

REINFORCING STEEL PLACING DRAWING ONLY. USE IN CONJUNCTION WITH CONTRACT DRAWINGS & SPECIFICATIONS. ELEVATIONS & DIMENSIONS SHOWN ON DRAWING ARE FOR DETAILING PURPOSES ONLY AND SHOULD NOT BE USED FOR CONSTRUCTION UNLESS VERIFIED BY ENGINEER OR CONTRACTOR.



AREA-B FOUNDATION LAYOUT
REF: S1.00
SCALE: 1/8" = 1'-0"



LAP SCHEDULE
4000 PSI (CLASS-B) CASE - 1
Per ACI 318 (12.2.2)

BAR#	LENGTHS	
	TOP	OTHERS
#3	2'-0"	1'-7"
#4	2'-8"	2'-1"
#5	3'-4"	2'-7"
#6	4'-0"	3'-1"
#7	5'-10"	4'-6"
#8	6'-8"	5'-2"
#9	7'-7"	5'-10"
#10	8'-6"	6'-7"
#11	9'-5"	7'-3"

ALL TOP BARS ARE DEFINED AS HORIZ BARS WITH MORE THAN 12" OF CONCRETE BELOW BARS.

TYPICAL REINFORCING BAR CLEARANCE TABLE

LOCATION	MIN. COVER
FOOTING ALL SIDES	3" CLR
PIER ALL SIDES	2" CLR

ALL BARS IN THIS DRAWING
ASTM A615 GRADE 60
BLACK UNCOATED

REBAR GRADE 60 ASTM A-615

SPLICES USED
CLASS B 4,000 psi UNO

TOP BARS	OTHER BARS
#3 24"	#3 19"
#4 32"	#4 25"
#5 40"	#5 31"
#6 48"	#6 37"
#7 70"	#7 54"
#8 80"	#8 62"
#9 91"	#9 70"
#10 102"	#10 79"
#11 113"	#11 87"
#14	#14

ABBREVIATIONS		BAR MARK SIZE EQUIVALENT	
ADD.	Additional	Imperial	Soft Metric
B.O.W.	Bottom of wall		
C.B.	Corner Bars		
DIAG.	Diagonal		
D.O.	Door Opening		
DWLS.	Dowels		
E.F.	Each Face		
E.S.	Each Side		
E.W.	Each Way		
FTG.	Footing		
F.F.	Far Face		
HORIZ.	Horizontal		
I.F.	Inside Face		
INTERS.	Intersection		
L.W.	long Way		
N.F.	Near Face		
O.F.	Outside Face		
S.W.	Short Way		
T&B	Top & Bottom		
T.O.W.	Top of Wall		
Trans.	Transverse		
VERT.	Vertical		

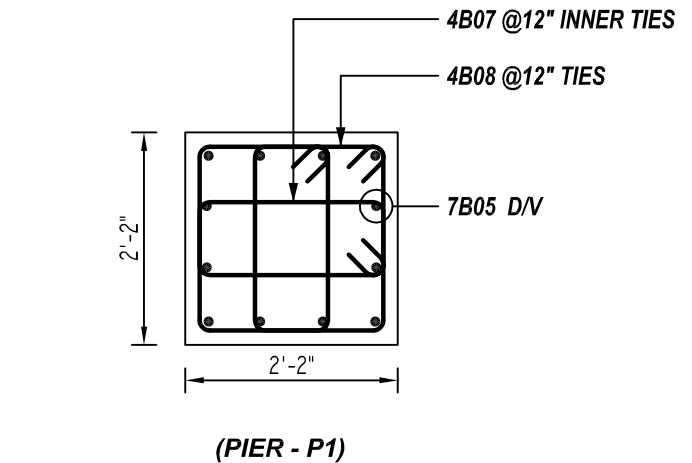
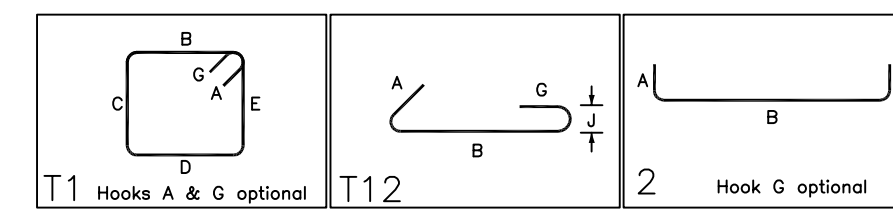
QUINCY PUBLIC SAFETY HQ
AREA-B FOOTING & PIER REINFORCEMENT DETAILS
ONE SEA QUINCY, MA 02169
CUSTOMER: Marguerite Concrete Inc.
DESIGNER: ODEH ENGINEERS
DRAWN BY: DATE: JOB NO: SHEET NO.
GOW/SS 08.31.22 M92270640P R08

REV NO	DATE	APPROVAL	REV NO	DATE	SENT FOR
0	08.31.22				

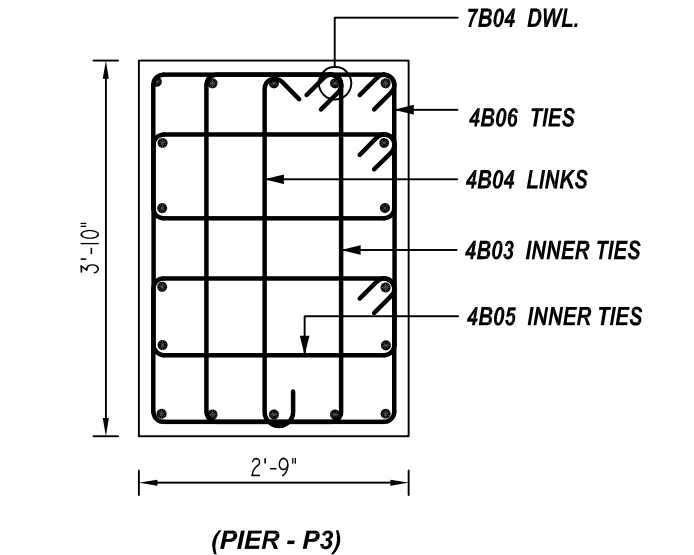
PIER SCHEDULE								
MARK	QTY	SIZE	BOTTOM OF PIER	FOOTING MARK	GRID LOCATION	VERTS	TIES & ADD'L TIES	REMARK
P1	4	2'-2"x2'-2"	EL: -24'-0"	MAT-D	H/5, H/6, H/7 & J/5	4x12 #7 7B05 D/V	4x2 #4 4B08 T TIES 4x2x2 #4 4B07 T INNER TIES 4x4 #4 4B08 @12" TIES 4x2x4 #4 4B07 @12" INNER TIES 4x3 #4 4B09 TEMP TIES	REFER SECTION-2
P1A	1	2'-2"x2'-2"	EL: VARIES	MAT-D	J.2/6	4 #7 7B21 D/V 2 #7 7B20 D/V 2 #7 7B19 D/V 4 #7 7B18 D/V	2 #4 4B08 T TIES 2x2 #4 4B07 T INNER TIES 3 #4 4B08 @12" TIES 2x3 #4 4B07 @12" INNER TIES 5 #4 4B09 TEMP TIES	REFER SECTION-2
P1B	6	2'-2"x2'-2"	EL: -22'-0"	MAT-D & F14	K/4, L/6, L/7, L/8, L/9 & L10	6x12 #7 7B17 D/V	6x2 #4 4B08 T TIES 6x2x2 #4 4B07 T INNER TIES 6x2 #4 4B08 @12" TIES 6x2x2 #4 4B07 @12" INNER TIES 6x3 #4 4B09 TEMP TIES	REFER SECTION-2
P1C	1	2'-2"x2'-2"	EL: -21'-2"	F9	K/1	12 #7 7B06 D/V	2 #4 4B08 T TIES 2x2 #4 4B07 T INNER TIES 2 #4 4B08 @12" TIES 2x2 #4 4B07 @12" INNER TIES 3 #4 4B09 TEMP TIES	REFER SECTION-2
P1D	1	2'-2"x2'-2"	EL: -21'-4"	F10	K/3	12 #7 7B16 D/V	2 #4 4B08 T TIES 2x2 #4 4B07 T INNER TIES 2 #4 4B08 @12" TIES 2x2 #4 4B07 @12" INNER TIES 3 #4 4B09 TEMP TIES	REFER SECTION-2
P1E	1	2'-2"x2'-2"	EL: -21'-8"	F12	L/10	12 #7 7B08 D/V	2 #4 4B08 T TIES 2x2 #4 4B07 T INNER TIES 2 #4 4B08 @12" TIES 2x2 #4 4B07 @12" INNER TIES 3 #4 4B09 TEMP TIES	REFER SECTION-2
P1F	1	2'-2"x2'-2"	EL: -21'-8"	F7	K/11	12 #7 7B15 D/V	2 #4 4B08 T TIES 2x2 #4 4B07 T INNER TIES 3 #4 4B08 @12" TIES 2x3 #4 4B07 @12" INNER TIES 2 #4 4B09 TEMP TIES	REFER SECTION-2
P1G	1	2'-2"x2'-2"	EL: -20'-8"	F7	L/14	12 #7 7B11 D/V	2 #4 4B08 T TIES 2x2 #4 4B07 T INNER TIES 2 #4 4B08 @12" TIES 2x2 #4 4B07 @12" INNER TIES 2 #4 4B09 TEMP TIES	REFER SECTION-2
P1H	1	2'-2"x2'-2"	EL: -21'-10"	F13	H/8	12 #7 7B14 D/V	2 #4 4B08 T TIES 2x2 #4 4B07 T INNER TIES 2 #4 4B08 @12" TIES 2x2 #4 4B07 @12" INNER TIES 3 #4 4B09 TEMP TIES	REFER SECTION-2
P1J	1	2'-2"x2'-2"	EL: -19'-0"	CF12R	H/15	12 #7 7B13 DWLS	2 #4 4B09 TEMP TIES	REFER SECTION-2
P1K	1	2'-2"x2'-2"	EL: -21'-6"	F11	L/13	12 #7 7B12 D/V	2 #4 4B08 T TIES 2x2 #4 4B07 T INNER TIES 2 #4 4B08 @12" TIES 2x2 #4 4B07 @12" INNER TIES 3 #4 4B09 TEMP TIES	REFER SECTION-2
P3	1	3'-10"x2'-9"	EL: -19'-0"	CF12R	J/15	18 #7 7B04 DWL	2x2 #4 4B06 T TIES 2 #4 4B05 T INNER TIES 2 #4 4B03 T INNER TIES 2 #4 4B04 T LINKS 2x2 #4 4B06 TIES 2 #4 4B05 INNER TIES 2 #4 4B03 INNER TIES 2 #4 4B04 LINKS	REFER SECTION-2
P4	4	1'-6"x1'-6"	EL: -20'-0"	F4	G.5/1, G.5/0.3, H/0.2 & J.5/0.4	4x8 #7 7B03 D/V	4x2 #4 4B02 T TIES 4x2 #4 4B01 T INNER TIES 4x2 #4 4B02 @12" TIES 4x2 #4 4B01 @12" INNER TIES	REFER SECTION-2
P4A	1	1'-6"x1'-6"	EL: -20'-6"	F5	J/0.1	8 #7 7B04 D/V	2 #4 4B02 T TIES 2 #4 4B01 T INNER TIES 2 #4 4B02 @12" TIES 2 #4 4B01 @12" INNER TIES	REFER SECTION-2
P4B	2	1'-6"x1'-6"	EL: -20'-6"	F6	SB/12 & SB/14	2x8 #7 7B11 D/V	2x2 #4 4B02 T TIES 2x2 #4 4B01 T INNER TIES 2x2 #4 4B02 @12" TIES 2x2 #4 4B01 @12" INNER TIES	REFER SECTION-2
P4C	2	1'-6"x1'-6"	EL: -20'-8"	F7	SC/12 & SC/14	2x8 #7 7B10 D/V	2x2 #4 4B02 T TIES 2x2 #4 4B01 T INNER TIES 2x2 #4 4B02 @12" TIES 2x2 #4 4B01 @12" INNER TIES	REFER SECTION-2
P4D	1	1'-6"x1'-6"	EL: -22'-0"	F14	L/12	8 #7 7B09 D/V	2 #4 4B02 T TIES 2 #4 4B01 T INNER TIES 2 #4 4B02 @12" TIES 2 #4 4B01 @12" INNER TIES	REFER SECTION-2
P4E	1	1'-6"x1'-6"	EL: -21'-6"	F11	L/13	8 #7 7B08 D/V	2 #4 4B02 T TIES 2 #4 4B01 T INNER TIES 2 #4 4B02 @12" TIES 2 #4 4B01 @12" INNER TIES	REFER SECTION-2
P4F	1	1'-6"x1'-6"	EL: -20'-8"	F7	L/14	8 #7 7B07 D/V	2 #4 4B02 T TIES 2 #4 4B01 T INNER TIES 2 #4 4B02 @12" TIES 2 #4 4B01 @12" INNER TIES	REFER SECTION-2
P4G	3	1'-6"x1'-6"	EL: -21'-0"	CF7	SD/S1, SD/S2 & SD/3	3x8 #7 7B06 D/V	3x2 #4 4B02 T TIES 3x2 #4 4B01 T INNER TIES 3x2 #4 4B02 @12" TIES 3x2 #4 4B01 @12" INNER TIES	REFER SECTION-2

FOOTING SCHEDULE					
MARK	QTY	SIZE	GRID LOCATION	REINFORCING	REMARK
F4	4	4'-0"x4'-0"x1'-0"	G.5/1, G.5/0.3, H/0.2 & J.5/0.4	4x2x5 #5 X 3'-6" B EW	REFER SECTION-1
F5	1	5'-0"x5'-0"x1'-6"	J/0.1	2x6 #5 X 4'-6" B EW	REFER SECTION-1
F6	2	6'-0"x6'-0"x1'-6"	SB/S1 & SB/S3	2x2x7 #6 X 5'-6" B EW	REFER SECTION-1
F7	4	7'-0"x7'-0"x1'-8"	SB/S1, SC/S1, SC/S3 & K/11	4x2x8 #6 X 6'-6" B EW	REFER SECTION-1
F8	1	8'-0"x8'-0"x2'-0"	H/8/1	2x9 #6 X 7'-6" B EW	REFER SECTION-1
F9	5	9'-0"x9'-0"x2'-2"	K/1, H/1, SC/S3, SB/S2 & SC/S2	5x2x10 #7 X 8'-6" B EW	REFER SECTION-1
F10	4	10'-0"x10'-0"x2'-4"	J/2/0.2, K/3, J/12 & SC/S1	4x2x11 #7 X 9'-6" B EW	REFER SECTION-1
F11	2	11'-0"x11'-0"x2'-6"	J/13 & L/13	2x2x12 #8 X 10'-6" B EW	REFER SECTION-1
F12	3	12'-0"x12'-0"x2'-8"	H/3, H/10 & L/10	3x2x13 #8 X 11'-6" B EW	REFER SECTION-1
F13	1	13'-0"x13'-0"x2'-10"	H/8	2x14 #8 X 12'-6" B EW	REFER SECTION-1
F14	5	14'-0"x14'-0"x3'-0"	H/9, H/12, L/8, L/9 & L/12	5x2x15 #8 X 13'-6" B EW	REFER SECTION-1
F15	1	15'-0"x15'-0"x3'-2"	H/10	2x16 #8 X 14'-6" B EW	REFER SECTION-1

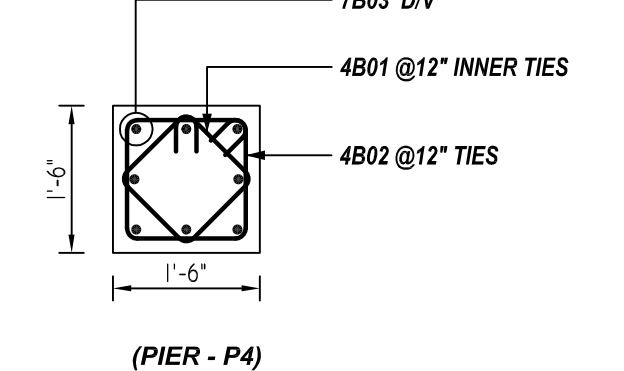
BENDING DETAILS												
Bar Mark	Qty	Size	Total Length	Type	X	Y	Z	W	V	U	T	S
4B01	60	#4	4'-7"	T1	0'-4.8"	0'-11.8"	0'-11.8"	0'-11.8"	0'-11.8"	0'-4.8"		
4B02	60	#4	5'-9"	T1	0'-4.8"	1'-5"	1'-5"	1'-5"	1'-5"	0'-4.8"		
4B03	4	#4	10'-9"	T1	0'-4.8"	1'-5"	3'-7"	1'-5"	3'-7"	0'-4.8"		
4B04	4	#4	4'-5.8"	T2	0'-4.8"	3'-7"				0'-4"		
4B05	4	#4	10'-4"	T1	0'-4.8"	2'-3.8"	2'-6"	2'-3.8"	2'-6"	0'-4.8"		
4B06	8	#4	8'-9"	T1	0'-4.8"	1'-6"	2'-6"	1'-6"	2'-6"	0'-4.8"		
4B07	164	#4	6'-1.8"	T1	0'-4.8"	0'-9.8"	1'-11"	0'-9.8"	1'-11"	0'-4.8"		
4B08	80	#4	8'-3"	T1	0'-4.8"	1'-11"	1'-11"	1'-11"	1'-11"	0'-4.8"		
4B09	56	#4	7'-11"	T1	0'-4.8"	1'-9.8"	1'-9.8"	1'-9.8"	1'-9.8"	0'-4.8"		
7B03	32	#7	3'-7"	2	1'-2"	2'-5"						
7B04	28	#7	4'-6"	2	1'-2"	3'-4"						
7B05	48	#7	7'-7"	2	1'-2"	6'-5"						
7B06	36	#7	4'-9"	2	1'-2"	3'-7"						
7B07	8	#7	4'-5"	2	1'-2"	3'-3"						
7B08	20	#7	5'-3"	2	1'-2"	4'-1"						
7B09	8	#7	5'-9"	2	1'-2"	4'-7"						
7B10	16	#7	4'-3.8"	2	1'-2"	3'-3.8"						
7B11	28	#7	4'-3.8"	2	1'-2"	3'-1.8"						
7B12	12	#7	5'-1"	2	1'-2"	3'-11"						
7B13	12	#7	7'-5"	2	1'-2"	6'-3"						
7B14	12	#7	5'-5"	2	1'-2"	4'-3"						
7B15	12	#7	5'-3.8"	2	1'-2"	4'-1.8"						
7B16	12	#7	4'-11"	2	1'-2"	3'-9"						
7B17	72	#7	3'-7"	2	1'-2"	4'-5"						
7B18	4	#7	7'-2"	2	1'-2"	5'-10"						
7B19	2	#7	6'-8"	2	1'-2"	5'-6"						
7B20	2	#7	6'-5"	2	1'-2"	5'-3"						
7B21	4	#7	6'-2"	2	1'-2"	5'-0"						



A SECTION
REF: S3.00 & S1.00 (DT.03/23/21)
SCALE: 1/2" = 1'-0"



B SECTION
REF: S3.00 & S1.00 (DT.03/23/21)
SCALE: 1/2" = 1'-0"



C SECTION
REF: S3.00 & S1.00 (DT.03/23/21)
SCALE: 1/2" = 1'-0"

LAP SCHEDULE

4000 PSI (CLASS-B) CASE - 1
Per ACI :318 (12.2.2)

BAR#	LENGTHS	
	TOP	OTHERS
#3	2'-0"	1'-7"
#4	2'-8"	2'-1"
#5	3'-4"	2'-7"
#6	4'-0"	3'-1"
#7	5'-10"	4'-6"
#8	6'-8"	5'-2"
#9	7'-7"	5'-10"
#10	8'-6"	6'-7"
#11	9'-5"	7'-3"

ALL TOP BARS ARE DEFINED AS HORIZ BARS WITH MORE THAN 12" OF CONCRETE BELOW BARS.

TYPICAL REINFORCING BAR CLEARANCE TABLE	
LOCATION	MIN. COVER
FOOTING ALL SIDES	3" CLR
PIER ALL SIDES	2" CLR

**ALL BARS IN THIS DRAWING
ASTM A615 GRADE 60
BLACK UNCOATED**

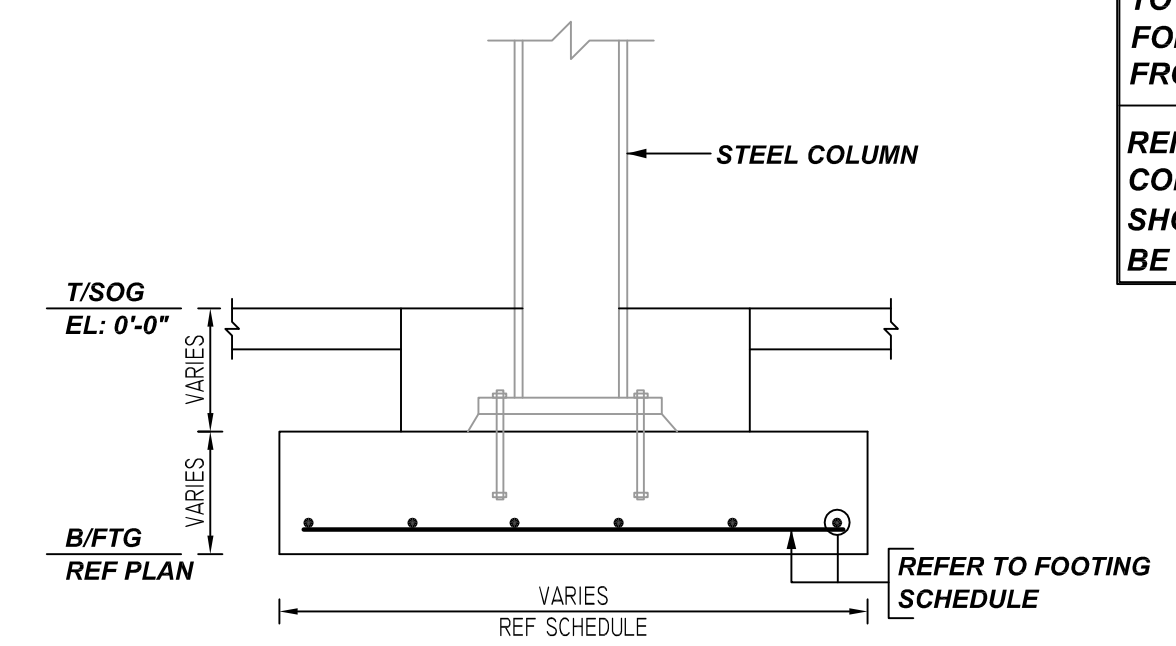
REBAR GRADE 60 ASTM A-615

SPICES USED		ABBREVIATIONS		BAR MARK SIZE EQUIVALENT	
CLASS B 4,000 psi UNO				Imperial / Soft Metric	
TOP BARS	OTHER BARS	ADD. = Additional	B.O.W. = Bottom of wall	#3	#10
#3 24"	#3 19"	C.B. = Corner Bars	DIAG. = Diagonal	#4	#13
#4 32"	#4 25"	D.O. = Door Opening	D.W.L.S. = Dowels	#5	#16
#5 40"	#5 31"	E.F. = Each Face	E.S. = Each Side	#6	#19
#6 48"	#6 37"	E.W. = Each Way	F.F. = Far Face	#7	#22
#7 70"	#7 54"	FGS. = Footing	HORIZ. = Horizontal	#8	#25
#8 80"	#8 62"	I.F. = Inside Face	INTERS. = Intersection	#9	#29
#9 91"	#9 70"	L.W. = long Way	N.F. = Near Face	#10	#32
#10 102"	#10 79"	O.F. = Outside Face	S.W. = Short Way	#11	#36
#11 113"	#11 87"	T&B = Top & Bottom	T.O.W. = Top of Wall		
#14	#14	Trans. = Transverse	VERT. = Vertical		

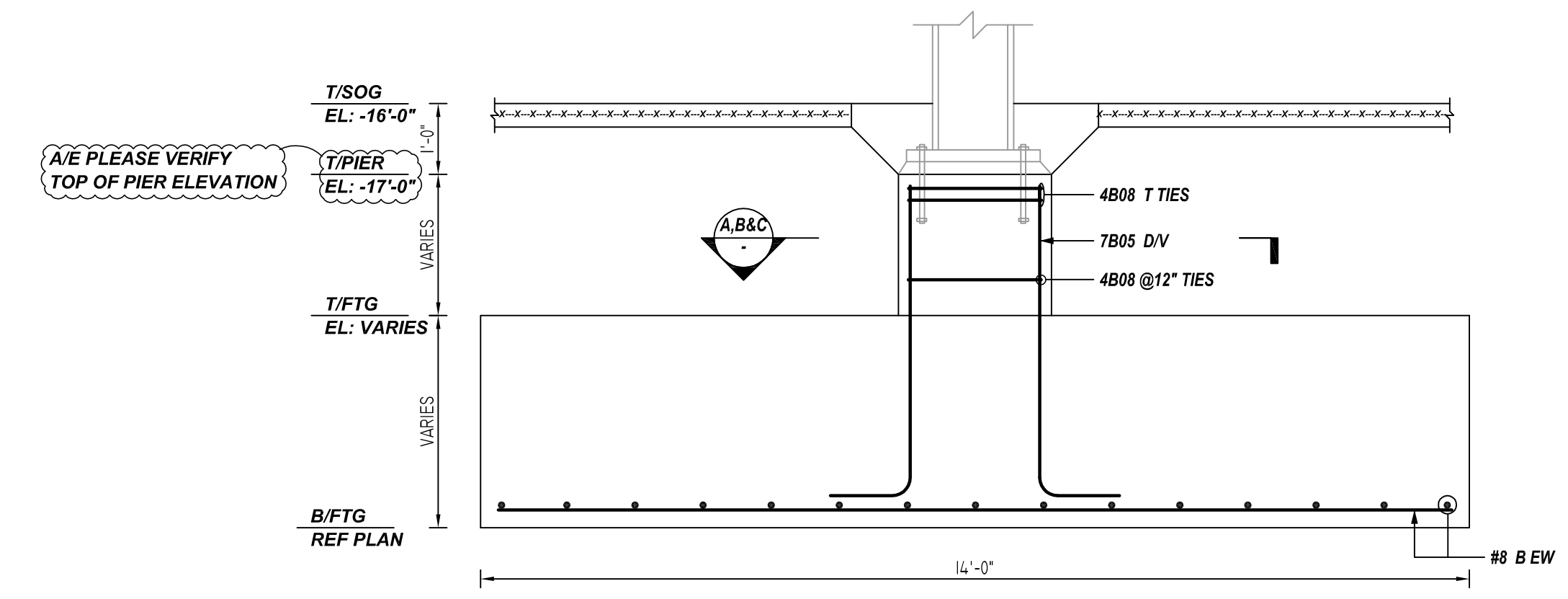
REV NO	DATE	APPROVAL	REV NO	DATE	SENT FOR
0	08.31.22				

NOTICE
SHORTAGES, IMPROPER FABRICATION OR CLAIMS FOR ANY OTHER REASON MUST BE REPORTED TO THIS COMPANY WITHIN 10 DAYS FROM ORIGINAL DELIVERY. THIS COMPANY ALSO RESERVES THE RIGHT TO FIELD INSPECT MATERIALS PRIOR TO REPLACEMENT OR RECONDITIONING OF MATERIALS AND WILL NOT BE LIABLE FOR CHARGES FROM WORK DONE IN THE FIELD WITHOUT PRIOR AUTHORIZATION FROM THIS COMPANY.

REINFORCING STEEL PLACING DRAWING ONLY USE IN CONJUNCTION WITH CONTRACT DRAWINGS & SPECIFICATIONS. ELEVATIONS & DIMENSIONS SHOWN ON DRAWING ARE FOR DETAILING PURPOSES ONLY AND SHOULD NOT BE USED FOR CONSTRUCTION UNLESS VERIFIED BY ENGINEER OR CONTRACTOR.



1 SECTION
REF: S3.00 & S1.00 (DT.03/23/21)
SCALE: 1/2" = 1'-0"



2 SECTION
REF: S3.00 & S1.00 (DT.03/23/21)
SCALE: 1/2" = 1'-0"

QUINCY PUBLIC SAFETY HQ
AREA-B FOOTING & PIER REINFORCEMENT DETAILS
ONE SEA QUINCY, MA 02169

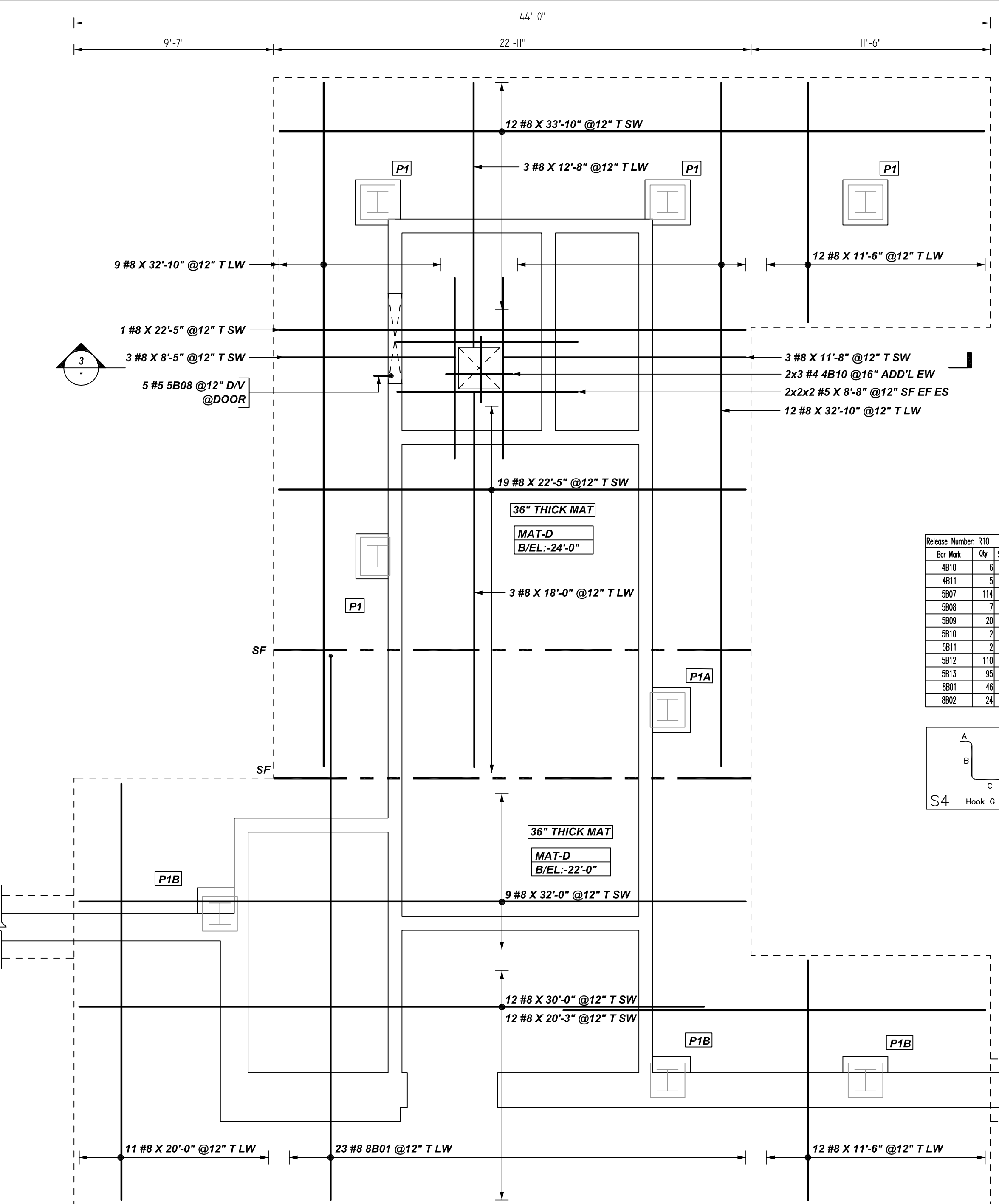
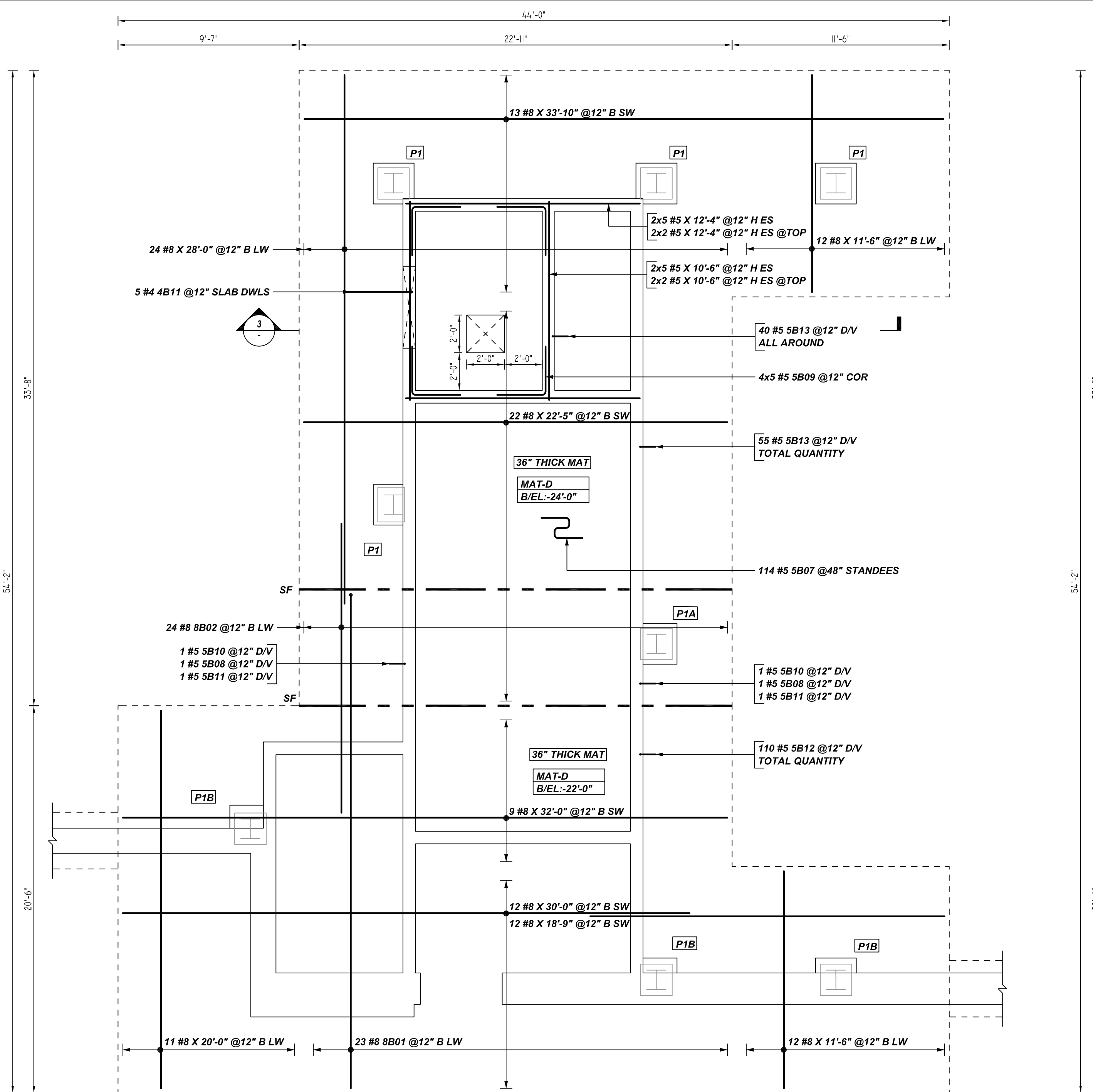
CUSTOMER: Marguerite Concrete Inc.
DESIGNER: ODEH ENGINEERS

DRAWN BY	DATE	JOB NO	SHEET NO.
GOW/SS	08.31.22	M92270640P	R09

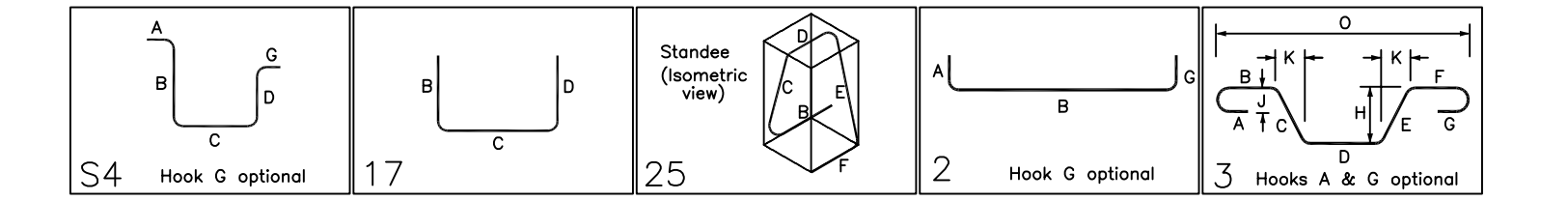
NOTICE

SHORTAGES, IMPROPER FABRICATION OR CLAIMS FOR ANY OTHER REASON MUST BE REPORTED TO THIS COMPANY WITHIN 10 DAYS FROM ORIGINAL DELIVERY. THIS COMPANY ALSO RESERVES THE RIGHT TO FIELD INSPECT MATERIALS PRIOR TO REPLACEMENT OR RECONDITIONING OF MATERIALS AND WILL NOT BE LIABLE FOR CHARGES FROM WORK DONE IN THE FIELD WITHOUT PRIOR AUTHORIZATION FROM THIS COMPANY.

REINFORCING STEEL PLACING DRAWING ONLY. USE IN CONJUNCTION WITH CONTRACT DRAWINGS & SPECIFICATIONS. ELEVATIONS & DIMENSIONS SHOWN ON DRAWING ARE FOR DETAILING PURPOSES ONLY AND SHOULD NOT BE USED FOR CONSTRUCTION UNLESS VERIFIED BY ENGINEER OR CONTRACTOR.



Bar Mark	Qty	Size	Total Length	Type	X	Y	Z	W	V	U	T	S	R	Q	P	O	N	M	L	K	J	I	H	G	F	E	D	C	B	A
4B10	6	#4	7'-3"	S4	0'-4"	2'-0"	2'-6"	2'-0"																						
4B11	5	#4	5'-6"	17	2'-0"																									
5B07	114	#5	8'-3"	25	1'-6"	2'-3"	0'-10"	2'-3"	1'-6"																					
5B08	7	#5	7'-3"	2	0'-10"	6'-5"																								
5B09	20	#5	5'-2"	17	2'-7"																									
5B10	2	#5	6'-9"	2	0'-10"	5'-11"																								
5B11	2	#5	7'-9"	2	0'-10"	6'-11"																								
5B12	110	#5	6'-3"	2	0'-10"	5'-5"																								
5B13	95	#5	8'-3"	2	0'-10"	7'-5"																								
8B01	46	#8	27'-6"	2	1'-4"	26'-2"																								
8B02	24	#8	15'-9"	3	5'-6"	4'-5"	5'-6"																							



LAP SCHEDULE

4000 PSI (CLASS-B) CASE - 1
Per ACI:318 (12.2.2)

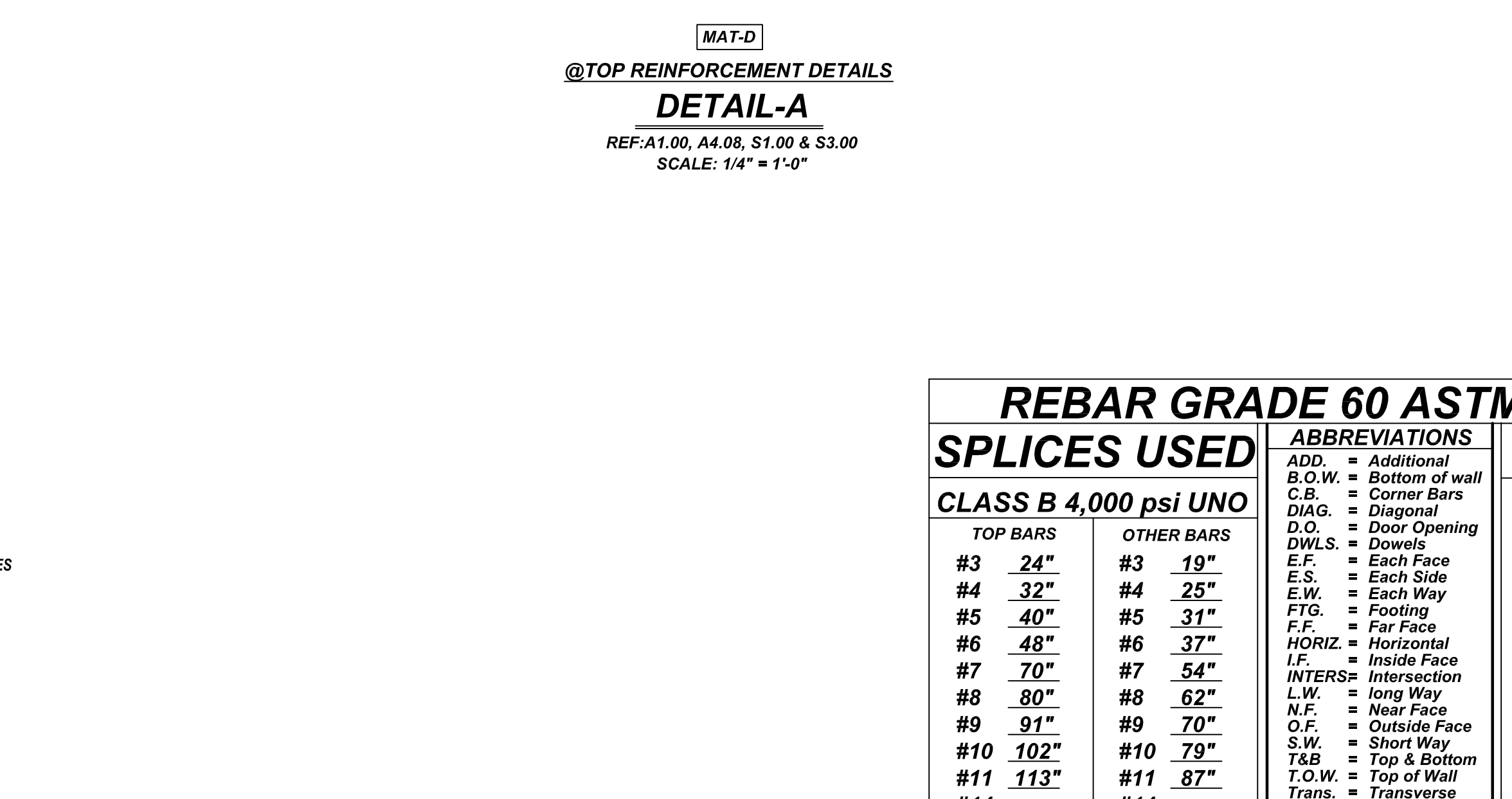
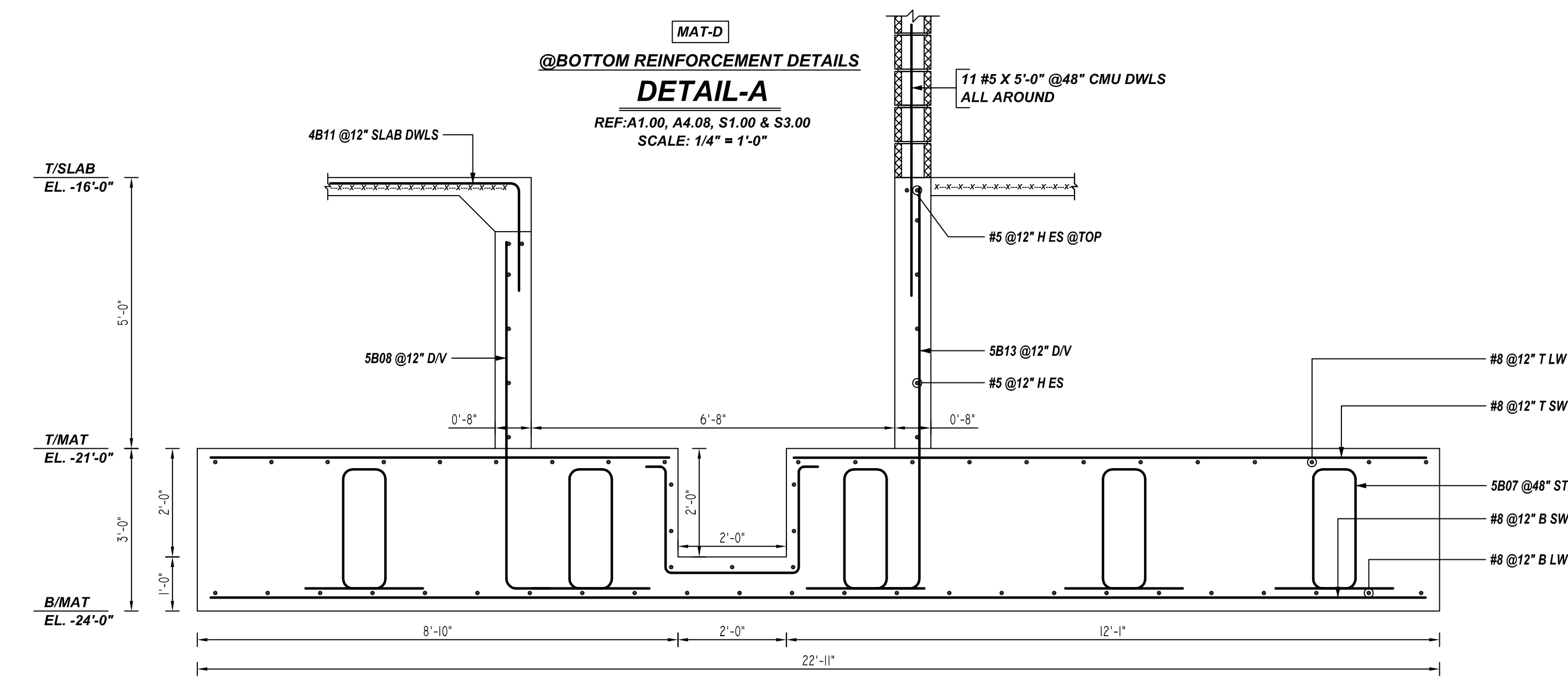
BAR#	LENGTHS	
	TOP	OTHERS
#3	2'-0"	1'-7"
#4	2'-8"	2'-4"
#5	3'-4"	2'-7"
#6	4'-0"	3'-1"
#7	5'-10"	4'-6"
#8	6'-8"	5'-2"
#9	7'-7"	5'-10"
#10	8'-6"	6'-7"
#11	9'-5"	7'-3"

A/E PLEASE VERIFY COVER FOLLOWED

TYPICAL REINFORCING BAR CLEARANCE TABLE	
LOCATION	MIN. COVER
FOOTING ALL SIDES	3" CLR
PIER ALL SIDES	2" CLR

**ALL BARS IN THIS DRAWING
ASTM A615 GRADE 60
BLACK UNCOATED**

ALL TOP BARS ARE DEFINED AS HORIZ BARS WITH MORE THAN 12" OF CONCRETE BELOW BARS.



SECTION 3
REF: S/S3.00 (DT.03/23/21)
SCALE: 1/2" = 1'-0"

REBAR GRADE 60 ASTM A-615

SPLICES USED		ABBREVIATIONS		BAR MARK SIZE EQUIVALENT	
CLASS B 4,000 psi UNO				Imperial	Soft Metric
TOP BARS	OTHER BARS	ADD.	Additional	#3	#10
#3 24"	#3 19"	B.O.W.	Bottom of wall	#4	#13
#4 32"	#4 25"	C.B.	Corner Bars	#5	#16
#5 40"	#5 31"	DIAG.	Diagonal	#6	#19
#6 48"	#6 37"	D.O.	Door Opening	#7	#22
#7 70"	#7 54"	DWLS.	Dowels	#8	#25
#8 80"	#8 62"	E.F.	Each Face	#9	#29
#9 91"	#9 70"	E.S.	Each Side	#10	#32
#10 102"	#10 79"	E.W.	Each Way	#11	#36
#11 113"	#11 87"	FTG.	Footing		
#14		F.F.	Far Face		
		HORIZ.	Horizontal		
		I.F.	Inside Face		
		INTERS.	Intersection		
		L.W.	Long Way		
		N.F.	Near Face		
		O.F.	Outside Face		
		S.W.	Short Way		
		T&B	Top & Bottom		
		T.O.W.	Top of Wall		
		Trans.	Transverse		
		VERT.	Vertical		

QUINCY PUBLIC SAFETY HQ
AREA-B FOOTING & PIER REINFORCEMENT DETAILS
ONE SEA QUINCY, MA 02169

CUSTOMER: Marguerite Concrete Inc.
DESIGNER: ODEH ENGINEERS

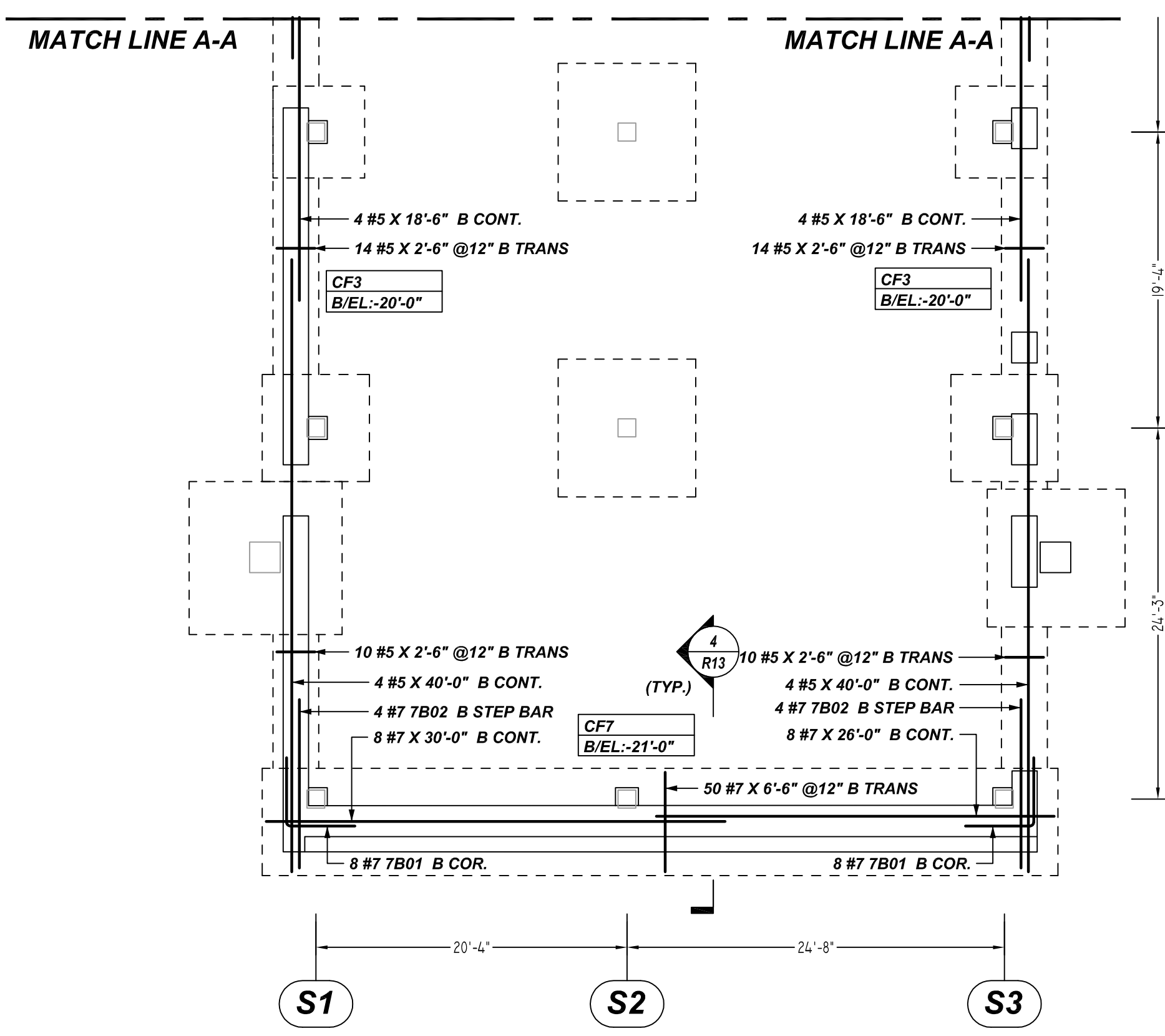
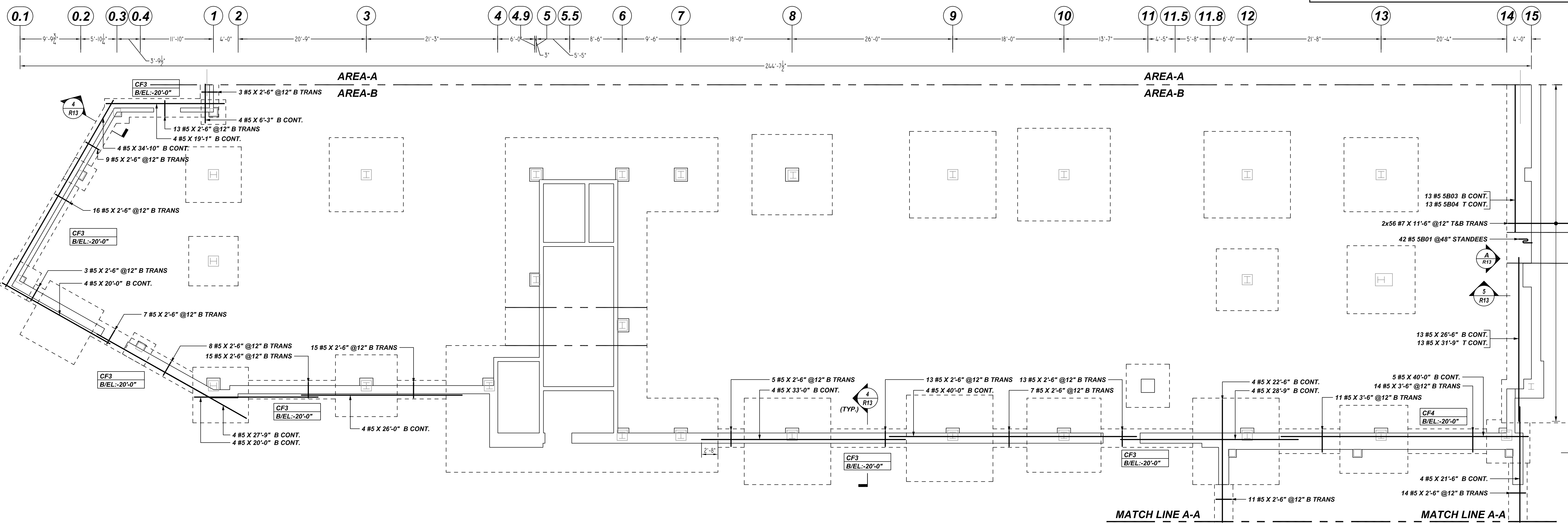
REV NO	DATE	APPROVAL	REV NO	DATE	SENT FOR
0	08.31.22				

DRAWN BY	DATE	JOB NO	SHEET NO.
GOW/SS	08.31.22	M92270640P	R10

NOTICE

SHORTAGES, IMPROPER FABRICATION OR CLAIMS FOR ANY OTHER REASON MUST BE REPORTED TO THIS COMPANY WITHIN 10 DAYS FROM ORIGINAL DELIVERY. THIS COMPANY ALSO RESERVES THE RIGHT TO FIELD INSPECT MATERIALS PRIOR TO REPLACEMENT OR RECONDITIONING OF MATERIALS AND WILL NOT BE LIABLE FOR CHARGES FOR WORK DONE IN THE FIELD WITHOUT PRIOR AUTHORIZATION FROM THIS COMPANY.

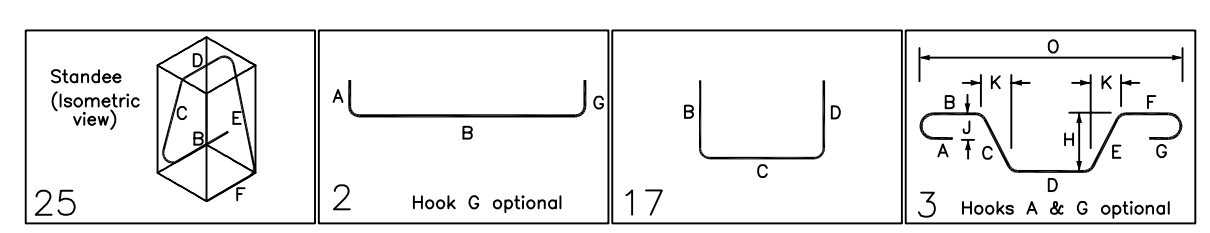
REINFORCING STEEL PLACING DRAWING ONLY. USE IN CONJUNCTION WITH CONTRACT DRAWINGS & SPECIFICATIONS. ELEVATIONS & DIMENSIONS SHOWN ON DRAWING ARE FOR DETAILING PURPOSES ONLY AND SHOULD NOT BE USED FOR CONSTRUCTION UNLESS VERIFIED BY ENGINEER OR CONTRACTOR.



AREA-B CONTINUOUS FOOTING REINFORCEMENT DETAILS

REF: S1.00
SCALE: 1/8" = 1'-0"

Bar Mark	Qty	Size	Total Length	Type	X	Y	Z	BENDING DETAILS	U	V	W	X	Y	Z	U	V	W
5B01	42	#5	6'-5 3/4"	25	1'-4"	1'-3 3/4"	0'-10"	1'-3 3/4"	1'-6"	1'-3 3/4"	0'-7 1/4"						
5B03	13	#5	24'-7"	2	0'-10"	23'-9"											
5B04	13	#5	28'-7"	2	0'-10"	28'-9"											
7B01	16	#7	9'-9"	17	4'-5"	4'-5"											
7B02	8	#7	11'-2 3/4"	3	4'-5"	2'-2 3/4"	4'-5"			1'-0 3/4"	1'-11 3/4"	10'-11 3/4"					



TYPICAL REINFORCING BAR CLEARANCE TABLE	
LOCATION	MIN. COVER
FOOTING ALL SIDES	3" CLR
PIER ALL SIDES	2" CLR

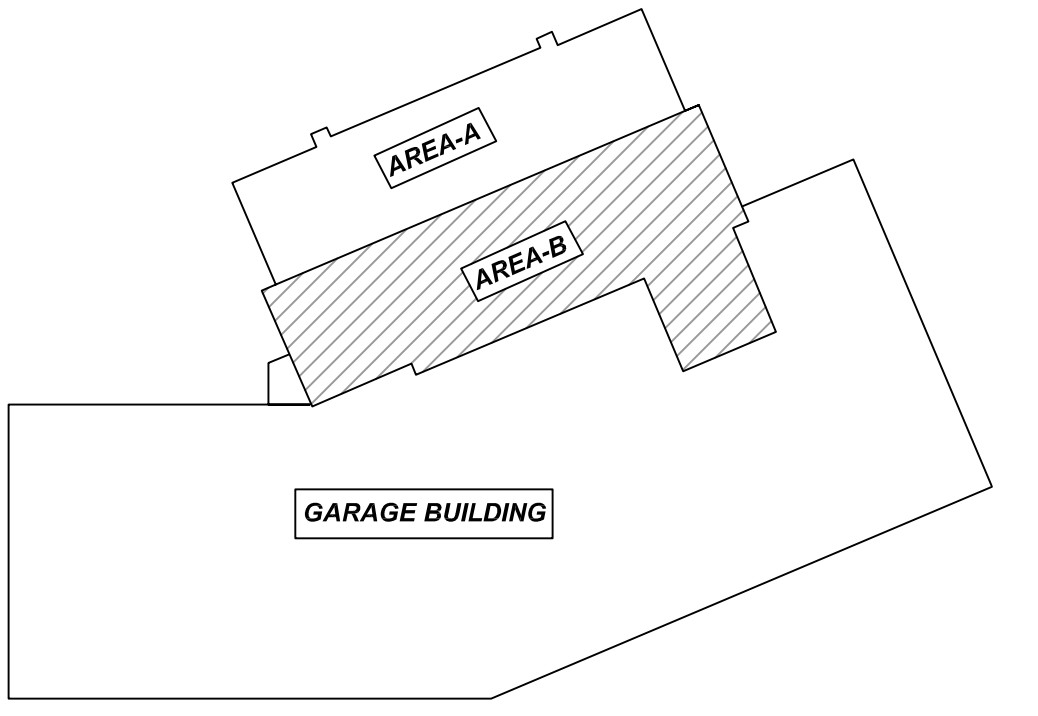
**ALL BARS IN THIS DRAWING
ASTM A615 GRADE 60
BLACK UNCOATED**

LAP SCHEDULE

4000 PSI (CLASS-B) CASE - 1
Per ACI 318 (12.2.2)

BAR#	LENGTHS	
	TOP	OTHERS
#3	2'-0"	1'-7"
#4	2'-8"	2'-1"
#5	3'-4"	2'-7"
#6	4'-0"	3'-1"
#7	5'-10"	4'-6"
#8	6'-8"	5'-2"
#9	7'-7"	5'-10"
#10	8'-6"	6'-7"
#11	9'-5"	7'-3"

ALL TOP BARS ARE DEFINED AS HORIZ BARS WITH MORE THAN 12" OF CONCRETE BELOW BARS.



REBAR GRADE 60 ASTM A-615

SPLICES USED		ABBREVIATIONS		BAR MARK SIZE EQUIVALENT	
CLASS B 4,000 psi UNO				Imperial	Soft Metric
TOP BARS	OTHER BARS	ADD.	Additional	#3	#10
#3 24"	#3 19"	B.O.W.	Bottom of wall	#4	#13
#4 32"	#4 25"	C.B.	Corner Bars	#5	#16
#5 40"	#5 31"	DIAG.	Diagonal	#6	#19
#6 48"	#6 37"	D.O.	Door Opening	#7	#22
#7 70"	#7 54"	DWLS.	Dowels	#8	#25
#8 80"	#8 62"	E.F.	Each Face	#9	#29
#9 91"	#9 70"	E.S.	Each Side	#10	#32
#10 102"	#10 79"	E.W.	Each Way	#11	#36
#11 113"	#11 87"	FTG.	Footing		
#14	#14	F.F.	Far Face		
		HORIZ.	Horizontal		
		I.F.	Inside Face		
		INTERS.	Intersection		
		L.W.	Long Way		
		N.F.	Near Face		
		O.F.	Outside Face		
		S.W.	Short Way		
		T&B	Top & Bottom		
		T.O.W.	Top of Wall		
		Trans.	Transverse		
		VERT.	Vertical		

QUINCY PUBLIC SAFETY HQ
AREA-B FOOTING & PIER REINFORCEMENT DETAILS
ONE SEA QUINCY, MA 02169

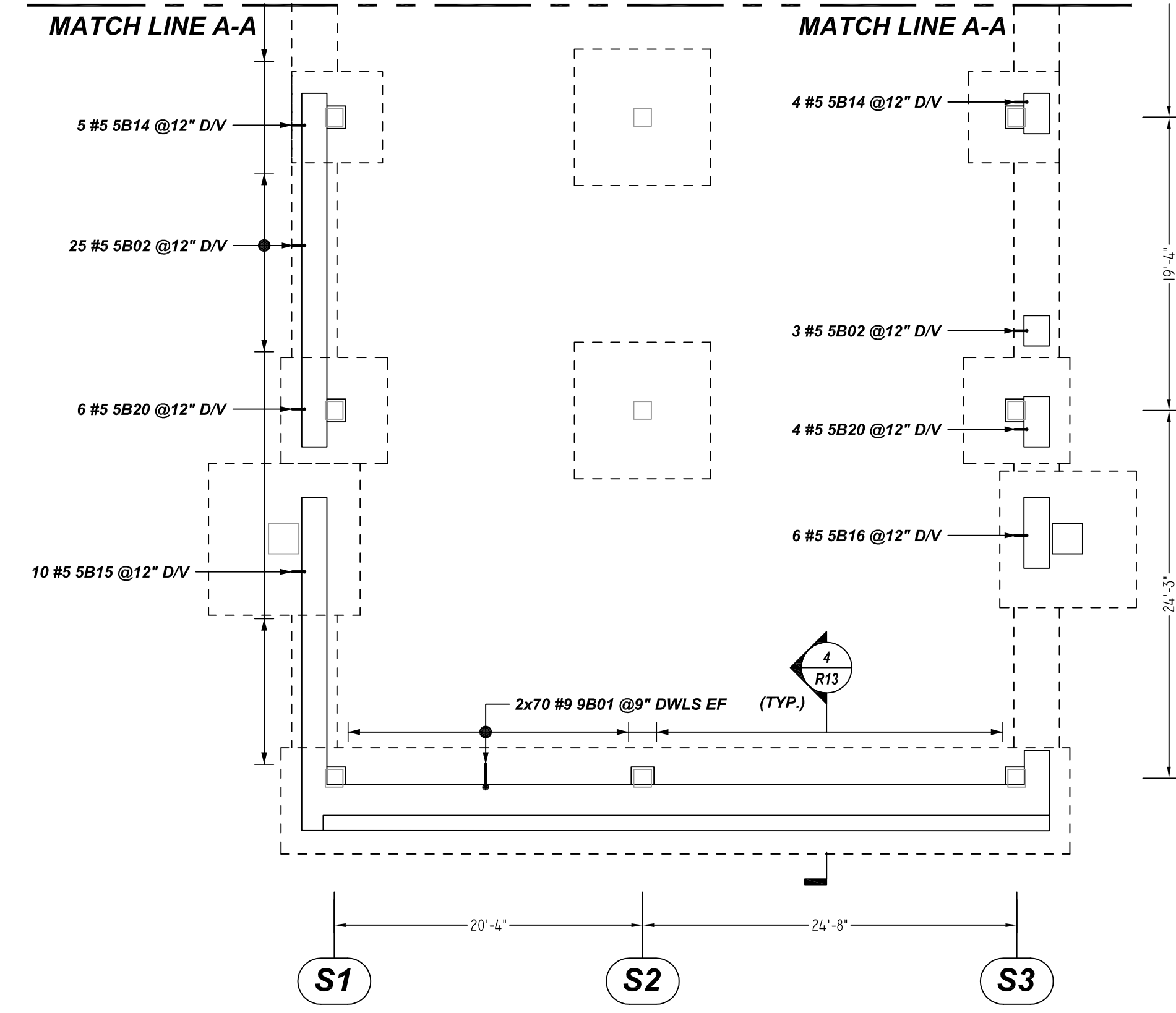
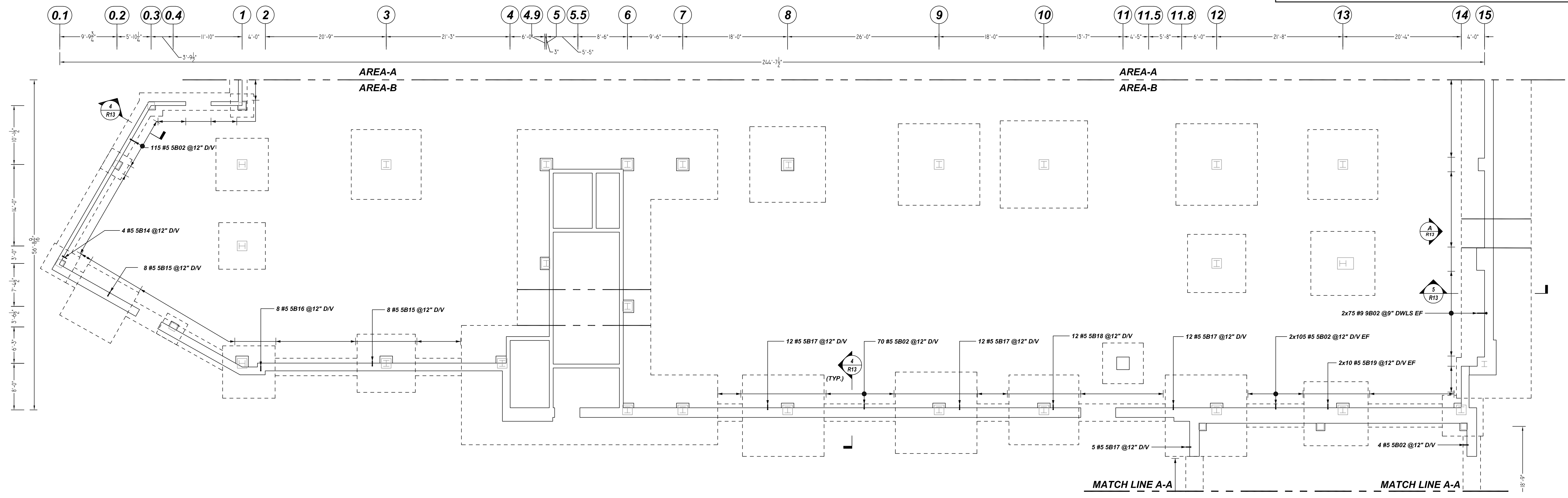
CUSTOMER: Marguerite Concrete Inc.
DESIGNER: ODEH ENGINEERS

REV NO	DATE	APPROVAL	SENT FOR	REV NO	DATE	SENT FOR
0	08.31.22					

DRAWN BY	DATE	JOB NO	SHEET NO.
GOW/SS	08.31.22	M92270640P	R11

NOTICE
 SHORTAGES, IMPROPER FABRICATION OR CLAIMS FOR ANY OTHER REASON MUST BE REPORTED TO THIS COMPANY WITHIN 10 DAYS FROM ORIGINAL DELIVERY. THIS COMPANY ALSO RESERVES THE RIGHT TO FIELD INSPECT MATERIALS PRIOR TO REPLACEMENT OR RECONDITIONING OF MATERIALS AND WILL NOT BE LIABLE FOR CHARGES FROM WORK DONE IN THE FIELD WITHOUT PRIOR AUTHORIZATION FROM THIS COMPANY.

REINFORCING STEEL PLACING DRAWING ONLY. USE IN CONJUNCTION WITH CONTRACT DRAWINGS & SPECIFICATIONS. ELEVATIONS & DIMENSIONS SHOWN ON DRAWING ARE FOR DETAILING PURPOSES ONLY AND SHOULD NOT BE USED FOR CONSTRUCTION UNLESS VERIFIED BY ENGINEER OR CONTRACTOR.



AREA-B CONTINUOUS FOOTING REINFORCEMENT DETAILS

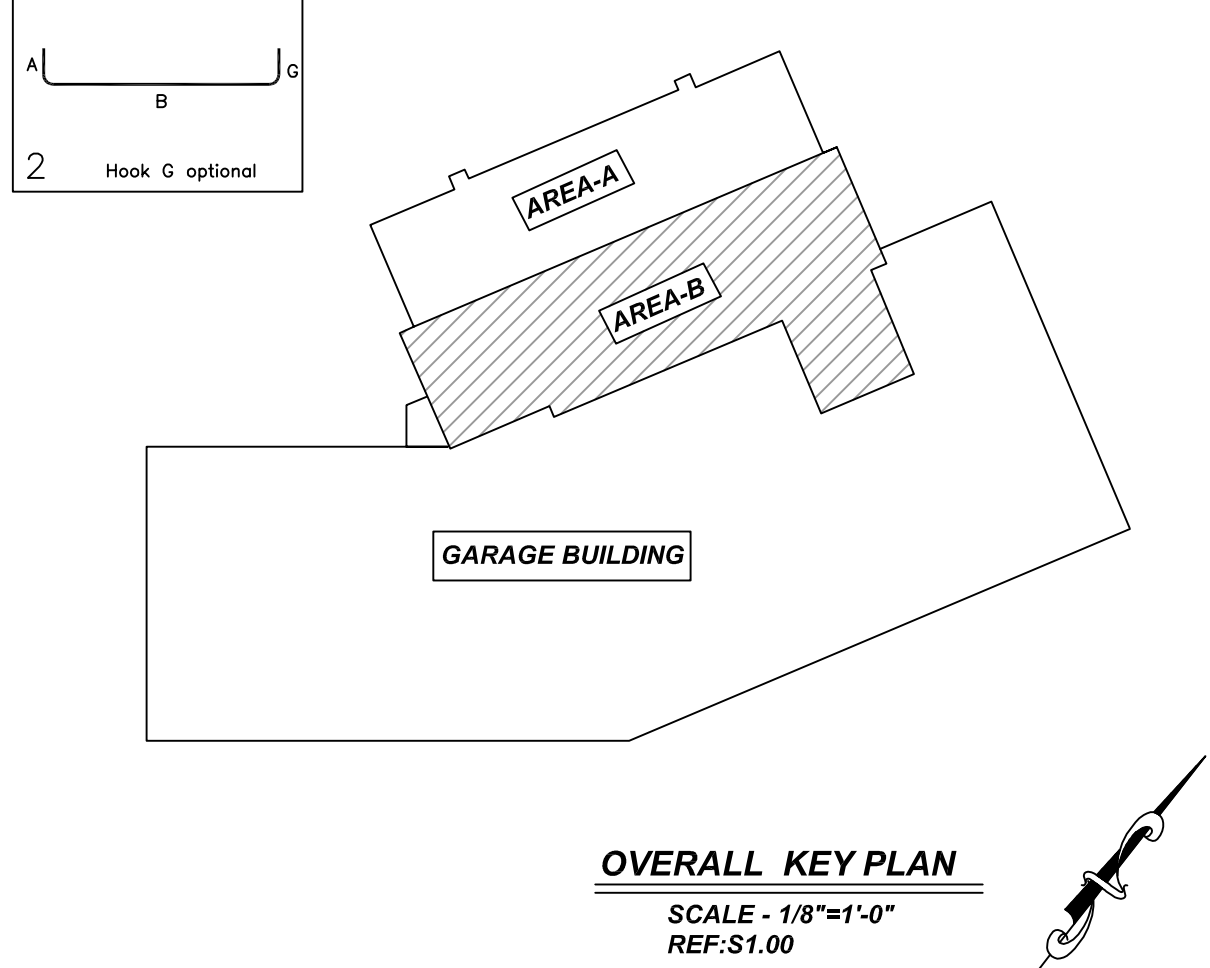
REF: S1.00
 SCALE: 1/8" = 1'-0"

Bar Mark	Qty	Size	Total Length	Type	X'	Y'	Z'	W'	V'	U'	T'	S'	R'	Q'	P'	O'	N'	M'	L'	K'	J'	I'	H'	G'	F'	E'	D'	C'	B'	A'	
5B02	427	#5	4'-4"	2	0'-10"	3'-5"																									
5B14	13	#5	4'-10"	2	0'-10"	4'-0"																									
5B15	28	#5	3'-5"	2	0'-10"	4'-10"																									
5B16	14	#5	3'-5"	2	0'-10"	4'-5"																									
5B17	41	#5	4'-4"	2	0'-10"	5'-5"																									
5B18	12	#5	6'-0"	2	0'-10"	5'-0"																									
5B19	20	#5	3'-10"	2	0'-10"	3'-0"																									
5B20	10	#5	5'-0"	2	0'-10"	4'-2"																									
9B01	140	#9	5'-1"	2	1'-7"	3'-5"																									
9B02	150	#9	10'-3"	2	1'-7"	8'-8"																									

LAP SCHEDULE
 4000 PSI (CLASS-B) CASE - 1
 Per ACI 318 (12.2.2)

BAR#	LENGTHS	
	TOP	OTHERS
#3	2'-0"	1'-7"
#4	2'-8"	2'-1"
#5	3'-4"	2'-7"
#6	4'-0"	3'-1"
#7	5'-10"	4'-6"
#8	6'-8"	5'-2"
#9	7'-7"	5'-10"
#10	8'-6"	6'-7"
#11	9'-5"	7'-3"

ALL TOP BARS ARE DEFINED AS HORIZ BARS WITH MORE THAN 12" OF CONCRETE BELOW BARS.



TYPICAL REINFORCING BAR CLEARANCE TABLE

LOCATION	MIN. COVER
FOOTING ALL SIDES	3" CLR
PIER ALL SIDES	2" CLR

ALL BARS IN THIS DRAWING
 ASTM A615 GRADE 60
 BLACK UNCOATED

REBAR GRADE 60 ASTM A-615

SPLICES USED		ABBREVIATIONS		BAR MARK SIZE EQUIVALENT	
CLASS B 4,000 psi UNO		ADD.	Additional	Imperial	Soft Metric
TOP BARS	OTHER BARS	B.O.W.	Bottom of wall	#3	#10
#3 24"	#3 19"	C.B.	Corner Bars	#4	#13
#4 32"	#4 25"	DIAG.	Diagonal	#5	#16
#5 40"	#5 31"	D.O.	Door Opening	#6	#19
#6 48"	#6 37"	D.W.L.S.	Dowels	#7	#22
#7 70"	#7 54"	E.F.	Each Face	#8	#25
#8 80"	#8 62"	E.S.	Each Side	#9	#29
#9 91"	#9 70"	E.W.	Each Way	#10	#32
#10 102"	#10 79"	F.F.	Far Face	#11	#36
#11 113"	#11 87"	HORIZ.	Horizontal		
#14	#14	I.F.	Inside Face		
		INTERS.	Intersection		
		L.W.	Long Way		
		N.F.	Near Face		
		O.F.	Outside Face		
		S.W.	Short Way		
		T&B	Top & Bottom		
		T.O.W.	Top of Wall		
		Trans.	Transverse		
		VERT.	Vertical		

QUINCY PUBLIC SAFETY HQ
 AREA-B FOOTING & PIER REINFORCEMENT DETAILS
 ONE SEA QUINCY, MA 02169

CUSTOMER: Marguerite Concrete Inc.
 DESIGNER: ODEH ENGINEERS

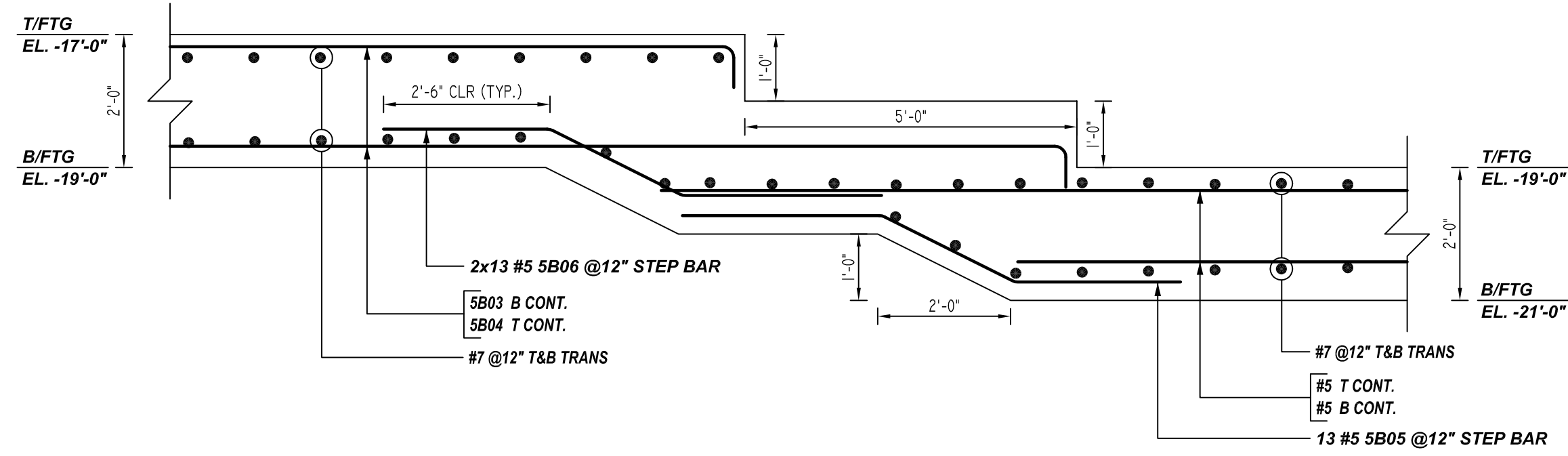
REV NO	DATE	APPROVAL	SENT FOR	REV NO	DATE	SENT FOR
0	08.31.22					

DRAWN BY	DATE	JOB NO	SHEET NO.
GOW/SS	08.31.22	M92270640P	R12

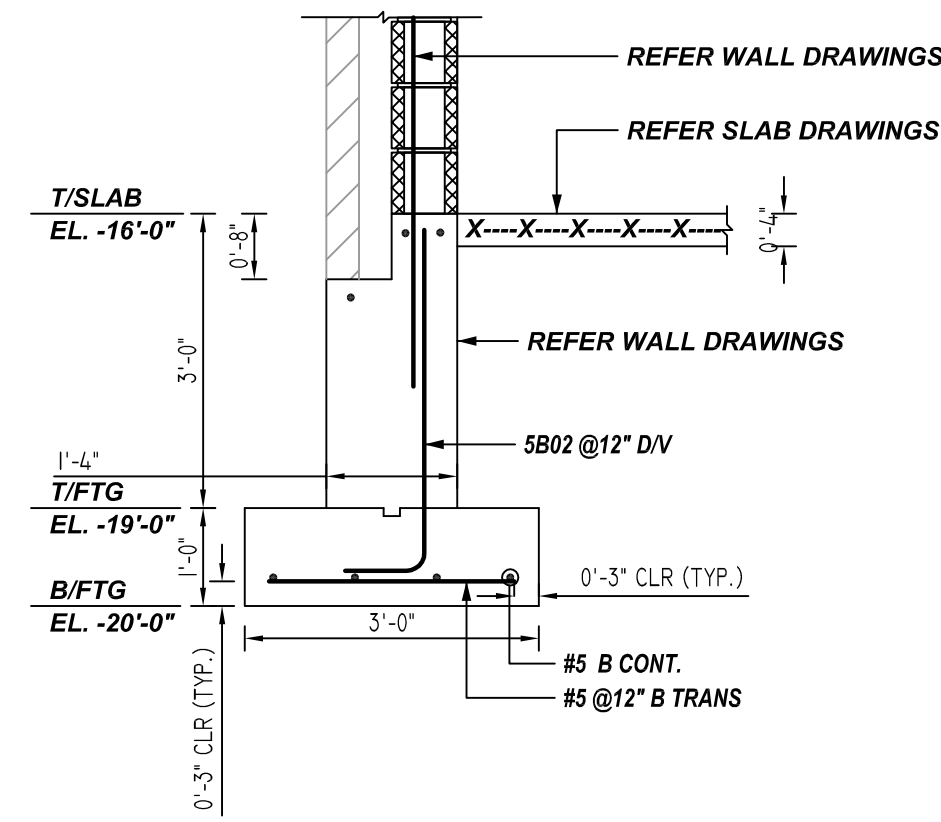
NOTICE

SHORTAGES, IMPROPER FABRICATION OR CLAIMS FOR ANY OTHER REASON MUST BE REPORTED TO THIS COMPANY WITHIN 10 DAYS FROM ORIGINAL DELIVERY. THIS COMPANY ALSO RESERVES THE RIGHT TO FIELD INSPECT MATERIALS PRIOR TO REPLACEMENT OR RECONDITIONING OF MATERIALS AND WILL NOT BE LIABLE FOR CHARGES FROM WORK DONE IN THE FIELD WITHOUT PRIOR AUTHORIZATION FROM THIS COMPANY.

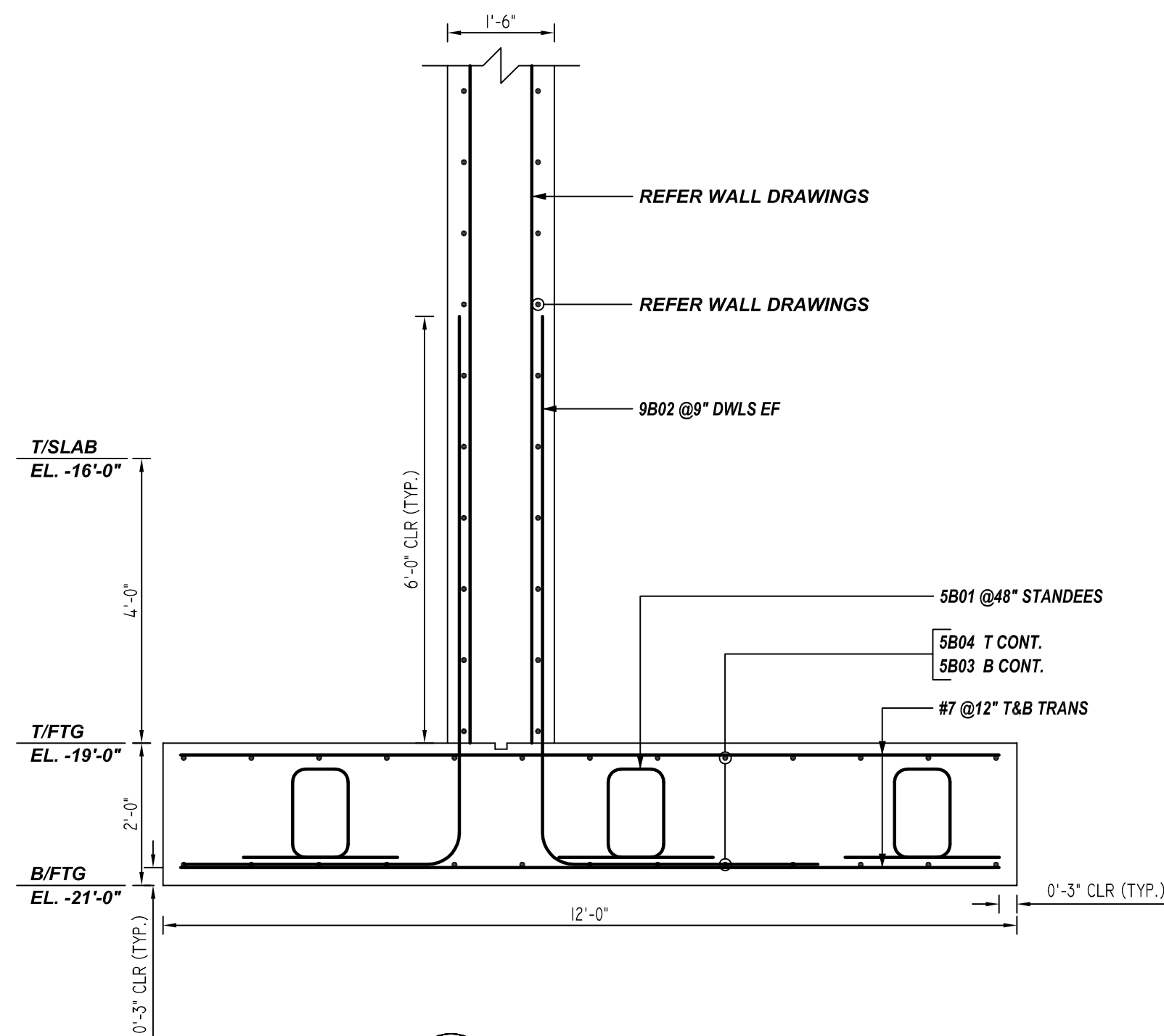
REINFORCING STEEL PLACING DRAWING ONLY. USE IN CONJUNCTION WITH CONTRACT DRAWINGS & SPECIFICATIONS. ELEVATIONS & DIMENSIONS SHOWN ON DRAWING ARE FOR DETAILING PURPOSES ONLY AND SHOULD NOT BE USED FOR CONSTRUCTION UNLESS VERIFIED BY ENGINEER OR CONTRACTOR.



A ELEVATION
 REF: S1.00 & S3.01
 SCALE: 1/2" = 1'-0"

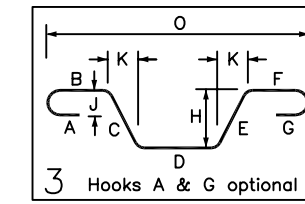


4 SECTION
 REF: S3.02
 SCALE: 1/2" = 1'-0"



5 SECTION
 REF: S3.02
 SCALE: 1/2" = 1'-0"

Release Number: R13				BENDING DETAILS														
Bar Mark	Qty	Size	Total Length	Type	X	Y	Z	W	V	U	T	S	R	Q	P	O	N	M
5B05	13	#5	7'-8 1/2"	3		3'-0"	2'-2 1/2"	2'-6"							1'-0 1/2"		1'-11 1/2"	7'-5 1/2"
5B06	26	#5	7'-8 1/2"	3		2'-6"	2'-2 1/2"	5'-0"							1'-0 1/2"		1'-11 1/2"	7'-5 1/2"



LAP SCHEDULE

4000 PSI (CLASS-B) CASE - 1
 Per ACI-318 (12.2.2)

BAR#	LENGTHS	
	TOP	OTHERS
#3	2'-0"	1'-7"
#4	2'-8"	2'-1"
#5	3'-4"	2'-7"
#6	4'-0"	3'-1"
#7	5'-10"	4'-6"
#8	6'-8"	5'-2"
#9	7'-7"	5'-10"
#10	8'-6"	6'-7"
#11	9'-5"	7'-3"

ALL TOP BARS ARE DEFINED AS HORIZ BARS WITH MORE THAN 12" OF CONCRETE BELOW BARS.

LOCATION	MIN. COVER
FOOTING ALL SIDES	3" CLR
PIER ALL SIDES	2" CLR

A/E PLEASE VERIFY COVER FOLLOWED

**ALL BARS IN THIS DRAWING
 ASTM A615 GRADE 60
 BLACK UNCOATED**

REBAR GRADE 60 ASTM A-615

SPLICES USED

CLASS B 4,000 psi UNO		OTHER BARS		ABBREVIATIONS		BAR MARK SIZE EQUIVALENT	
TOP BARS	OTHER BARS	TOP BARS	OTHER BARS	Imperial		Soft Metric	
#3 24"	#3 19"	#3 24"	#3 19"	ADD. = Additional	#3	#10	
#4 32"	#4 25"	#4 32"	#4 25"	B.O.W. = Bottom of wall	#4	#13	
#5 40"	#5 31"	#5 40"	#5 31"	C.B. = Corner Bars	#5	#16	
#6 48"	#6 37"	#6 48"	#6 37"	DIAG. = Diagonal	#6	#19	
#7 70"	#7 54"	#7 70"	#7 54"	D.O. = Door Opening	#7	#22	
#8 80"	#8 62"	#8 80"	#8 62"	DWLS. = Dowels	#8	#25	
#9 91"	#9 70"	#9 91"	#9 70"	E.F. = Each Face	#9	#29	
#10 102"	#10 79"	#10 102"	#10 79"	E.S. = Each Side	#10	#32	
#11 113"	#11 87"	#11 113"	#11 87"	E.W. = Each Way	#11	#36	
#14	#14	#14	#14	FTG. = Footing			
				F.F. = Far Face			
				HORIZ. = Horizontal			
				I.F. = Inside Face			
				INTERS= Intersection			
				L.W. = long Way			
				N.F. = Near Face			
				O.F. = Outside Face			
				S.W. = Short Way			
				T&B = Top & Bottom			
				T.O.W. = Top of Wall			
				Trans. = Transverse			
				VERT. = Vertical			

QUINCY PUBLIC SAFETY HQ
 AREA-B FOOTING & PIER REINFORCEMENT DETAILS
ONE SEA QUINCY, MA 02169

CUSTOMER: Marguerite Concrete Inc.

DESIGNER: ODEH ENGINEERS

REV NO	DATE	APPROVAL	REV NO	DATE	SENT FOR	DRAWN BY	DATE	JOB NO	SHEET NO.
0	08.31.22					GOW/SS	08.31.22	M92270640P	R13