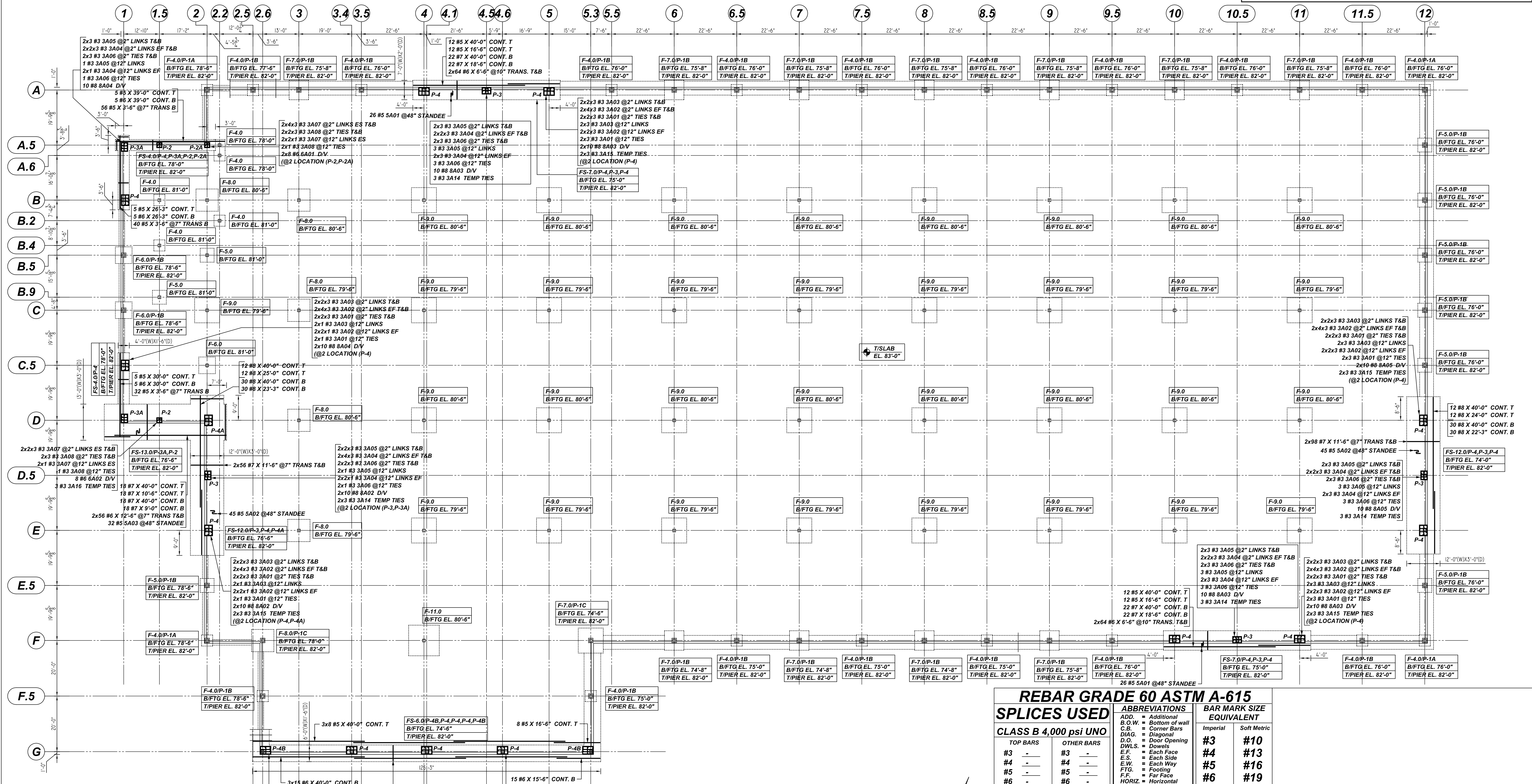


NOTICE

SHORTAGES, IMPROPER FABRICATION OR CLAIMS FOR ANY OTHER REASON MUST BE REPORTED TO THIS COMPANY WITHIN 10 DAYS FROM ORIGINAL DELIVERY. THIS COMPANY ALSO RESERVES THE RIGHT TO FIELD INSPECT MATERIALS PRIOR TO REPLACEMENT OR RECONDITIONING OF MATERIALS AND WILL NOT BE LIABLE FOR CHARGES FROM WORK DONE IN THE FIELD WITHOUT PRIOR AUTHORIZATION FROM THIS COMPANY.

REINFORCING STEEL PLACING DRAWING ONLY. USE IN CONJUNCTION WITH CONTRACT DRAWINGS & SPECIFICATIONS. ELEVATIONS & DIMENSIONS SHOWN ON DRAWING ARE FOR DETAILING PURPOSES ONLY AND SHOULD NOT BE USED FOR CONSTRUCTION UNLESS VERIFIED BY ENGINEER OR CONTRACTOR.



SPREAD FOOTING & PIER REINFORCEMENT DETAILS

SCALE: 1/16" = 1'-0"
REF: S101 (DT.06/24/22)

REBAR GRADE 60 ASTM A-615

SPLICES USED		ABBREVIATIONS		BAR MARK SIZE EQUIVALENT	
CLASS B 4,000 psi UNO				Imperial	Soft Metric
TOP BARS	OTHER BARS	ADD.	Additional	#3	#10
#3	#3	B.O.W.	Bottom of wall	#4	#13
#4	#4	C.B.	Corner Bars	#5	#16
#5	#5	DIAG.	Diagonal	#6	#19
#6	#6	D.O.	Door Opening	#7	#22
#7	#7	DWLS.	Dowels	#8	#25
#8	#8	E.F.	Each Face	#9	#29
#9	#9	E.S.	Each Side	#10	#32
#10	#10	E.W.	Each Way	#11	#36
#11	#11	FTG.	Footing		
#14	#14	F.F.	Far Face		
		HORIZ.	Horizontal		
		I.F.	Inside Face		
		INTERS.	Intersection		
		L.W.	long Way		
		N.F.	Near Face		
		O.F.	Outside Face		
		S.W.	Short Way		
		T&B	Top & Bottom		
		T.O.W.	Top of Wall		
		TRANS.	Transverse		
		VERT.	Vertical		

T. FORD AXCELIS WAREHOUSE
SPREAD FOOTING/PIER REINFORCEMENT DETAILS
BEVERLY, MA 01915

CUSTOMER: GREEN LEAF CONSTRUCTION
DESIGNER: TFM STRUCTURAL ENGINEERS

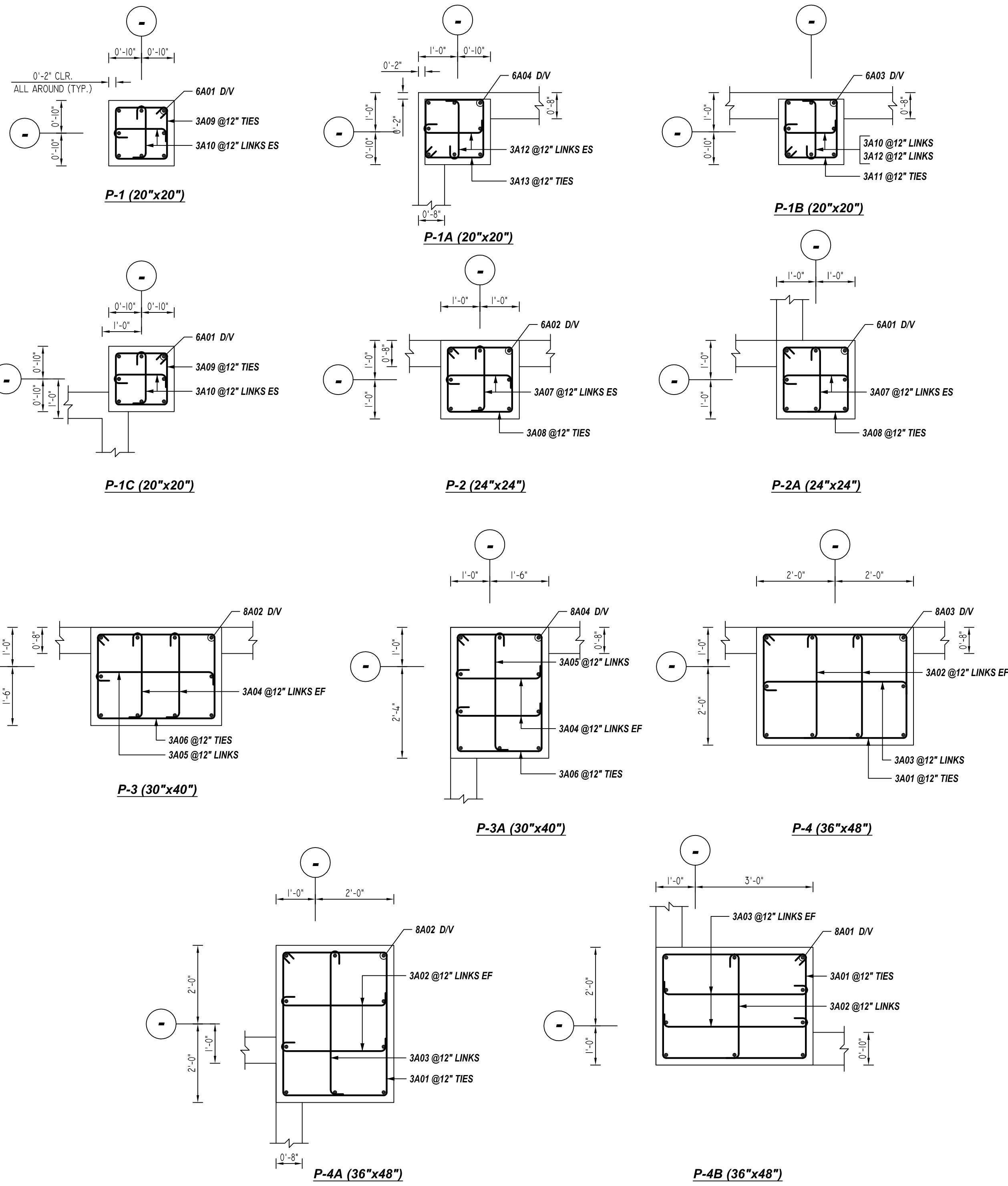
REV NO	DATE	APPROVAL	SENT FOR	REV NO	DATE	SENT FOR
0	09.01.22					

DRAWN BY	DATE	JOB NO	SHEET NO.
RTP/SS	09.01.22	M92270760	R01

FOOTING SCHEDULE					
MARK	QTY	SIZE	GRID LOCATION	REINFORCING	REMARK
F-4.0	25	4'-0"x4'-0"x1'-0"	A/2,2.5,3.5,5.5,6.5,7.5,8.5,9.5,10.5,11.5,12,A,5/2,2.A,6/2,2,B/1.5,B,2/2,2.B,4/1.5,F/2,6.5,7.5,8.5,9.5,11.5,12,F,5/2,6.5,3	25x2x7 #5 X 3'-6" B EW	
F-5.0	9	5'-0"x5'-0"x1'-0"	A.5/12,B/12,B.5/12,B.9/1.5,C/12,C.5/12,E.5/2,12	9x2x6 #5 X 4'-6" B EW	
F-6.0	3	6'-0"x6'-0"x1'-0"	B.5/1,C/1,C.5/2	3x2x6 #5 X 5'-6" B EW	
F-7.0	11	7'-0"x7'-0"x1'-4"	A/3,6,7,8,9,10,11,F/6,7,8,9	11x2x8 #5 X 6'-6" B EW	
F-8.0	6	8'-0"x8'-0"x1'-6"	B/2,3,C/3,D/3,E/3,F/2,6	6x2x8 #6 X 7'-6" B EW	
F-9.0	34	9'-0"x9'-0"x1'-6"	B/4,5,6,7,8,9,10,11,C/2,4,5,6,7,8,9,10,11,D/4,5,6,7,8,9,10,11,E/4,5,6,7,8,9,10,11,F/5,3	34x2x8 #6 X 8'-6" B EW	
F-11.0	1	11'-0"x11'-0"x1'-6"	F/4	2x8 #7 X 10'-6" B EW	
FS-4.0,FS-6.0,FS-7.0,FS-12.0 & FS-13.0 FOOTING REINFORCEMENT DETAILS REFER PLAN					

PIER SCHEDULE						
MARK	QTY	SIZE	GRID LOCATION	VERTS	TIES & ADD'L TIES	REMARK
P-1	2	1'-8"x1'-8"	A.5/2,2.A,6/2,2	2x8 #6 6A01 D/V	2x4x3 #3 3A10 @2" LINKS ES T&B 2x2x3 #3 3A09 @2" TIES T&B 2x2x1 #3 3A10 @12" LINKS ES 2x1 #3 3A09 @12" TIES	
P-1A	2	1'-8"x1'-8"	A/2,F/2	2x8 #6 6A04 D/V	2x4x3 #3 3A12 @2" LINKS ES T&B 2x2x3 #3 3A13 @2" TIES T&B 2x2x1 #3 3A12 @12" LINKS ES 2x1 #3 3A13 @12" TIES	
P-1A	2	1'-8"x1'-8"	A/12,F/12	2x8 #6 6A05 D/V	2x4x3 #3 3A12 @2" LINKS ES T&B 2x2x3 #3 3A13 @2" TIES T&B 2x2x3 #3 3A12 @12" LINKS ES 2x3 #3 3A13 @12" TIES	
P-1B	3	1'-8"x1'-8"	F/6,7,8	3x8 #6 6A03 D/V	3x2x3 #3 3A10 @2" LINKS T&B 3x2x3 #3 3A12 @2" LINKS T&B 3x2x3 #3 3A11 @2" TIES T&B 3x4 #3 3A10 @12" LINKS 3x4 #3 3A11 @12" TIES	
P-1B	4	1'-8"x1'-8"	F/6.5,7.5,8.5,F.5/5.3	4x8 #6 6A08 D/V	4x2x3 #3 3A10 @2" LINKS T&B 4x2x3 #3 3A12 @2" LINKS T&B 4x2x3 #3 3A11 @2" TIES T&B 4x4 #3 3A10 @12" LINKS 4x4 #3 3A12 @12" LINKS 4x4 #3 3A11 @12" TIES	
P-1B	8	1'-8"x1'-8"	A/3,6,7,8,9,10,11,F/9	8x8 #6 6A07 D/V	8x2x3 #3 3A10 @2" LINKS T&B 8x2x3 #3 3A12 @2" LINKS T&B 8x2x3 #3 3A11 @2" TIES T&B 8x3 #3 3A10 @12" LINKS 8x3 #3 3A12 @12" LINKS 8x3 #3 3A11 @12" TIES	
P-1B	16	1'-8"x1'-8"	A/3,5.5,6.5,7.5,8.5,9.5,10.5,11.5,A.5/12,B/12,B.5/12,C/12,C.5/12,E.5/12,F/9,5,11.5	16x8 #6 6A05 D/V	16x2x3 #3 3A10 @2" LINKS T&B 16x2x3 #3 3A12 @2" LINKS T&B 16x2x3 #3 3A11 @2" TIES T&B 16x3 #3 3A10 @12" LINKS 16x3 #3 3A12 @12" LINKS 16x3 #3 3A11 @12" TIES	
P-1B	1	1'-8"x1'-8"	A/2,5	8 #6 6A06 D/V	2x3 #3 3A10 @2" LINKS T&B 2x3 #3 3A12 @2" LINKS T&B 2x3 #3 3A11 @2" TIES T&B 2 #3 3A10 @12" LINKS 2 #3 3A12 @12" LINKS 2 #3 3A11 @12" TIES	
P-1B	4	1'-8"x1'-8"	B.5/1,C/1,E.5/2,F.5/2,6	4x8 #6 6A04 D/V	4x2x3 #3 3A10 @2" LINKS T&B 4x2x3 #3 3A12 @2" LINKS T&B 4x2x3 #3 3A11 @2" TIES T&B 4x1 #3 3A10 @12" LINKS 4x1 #3 3A12 @12" LINKS 4x1 #3 3A11 @12" TIES	
P-1C	1	1'-8"x1'-8"	F/2,6	8 #6 6A01 D/V	2x3 #3 3A09 @2" TIES T&B 2x2x3 #3 3A10 @2" LINKS ES T&B 1 #3 3A09 @12" TIES 2x1 #3 3A10 @12" LINKS ES	
P-1C	1	1'-8"x1'-8"	F/5,3	8 #6 6A09 D/V	2x3 #3 3A09 @2" TIES T&B 2x2x3 #3 3A10 @2" LINKS ES T&B 4 #3 3A09 @12" TIES 2x4 #3 3A10 @12" LINKS ES	
P-2,P-2A,P-3,P-3A,P-4,P-4A,P-4B PIER REINFORCEMENT DETAILS REFER PLAN						

REFER SECTION 1Z
REFER TYPICAL PIER DETAILS



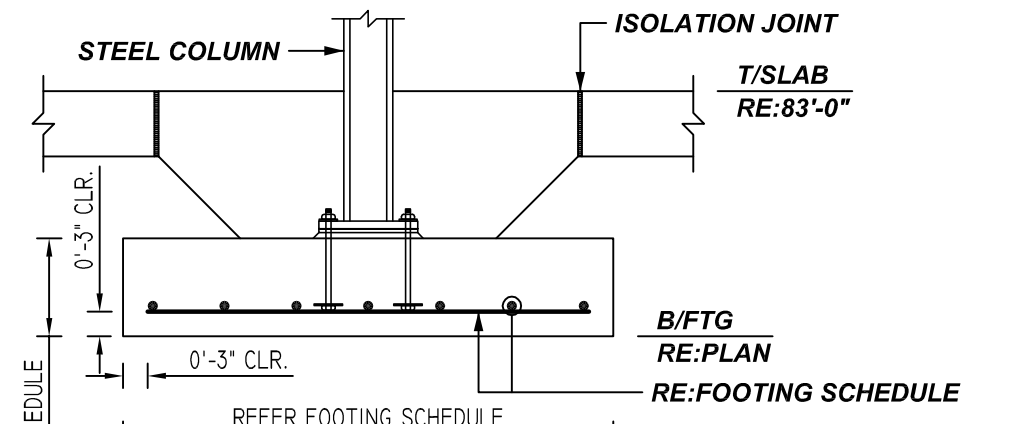
TYPICAL PIER DETAILS

SCALE: 1/2" = 1'-0"
REF: 1 THRU 11/S205 (DT.06/24/22)

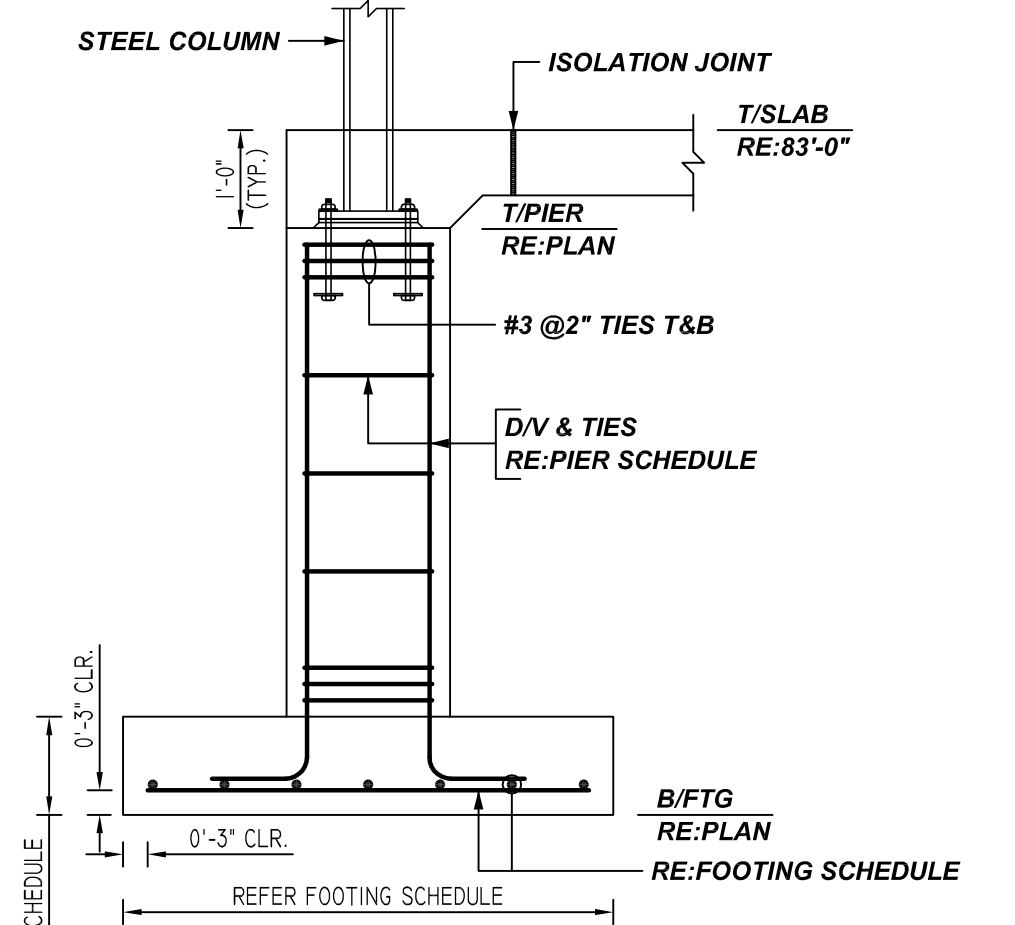
NOTICE

SHORTAGES, IMPROPER FABRICATION OR CLAIMS FOR ANY OTHER REASON MUST BE REPORTED TO THIS COMPANY WITHIN 10 DAYS FROM ORIGINAL DELIVERY. THIS COMPANY ALSO RESERVES THE RIGHT TO FIELD INSPECT MATERIALS PRIOR TO REPLACEMENT OR RECONDITIONING OF MATERIALS AND WILL NOT BE LIABLE FOR CHARGES FROM WORK DONE IN THE FIELD WITHOUT PRIOR AUTHORIZATION FROM THIS COMPANY.

REINFORCING STEEL PLACING DRAWING ONLY USE IN CONJUNCTION WITH CONTRACT DRAWINGS & SPECIFICATIONS. ELEVATIONS & DIMENSIONS SHOWN ON DRAWING ARE FOR DETAILING PURPOSES ONLY AND SHOULD NOT BE USED FOR CONSTRUCTION UNLESS VERIFIED BY ENGINEER OR CONTRACTOR.

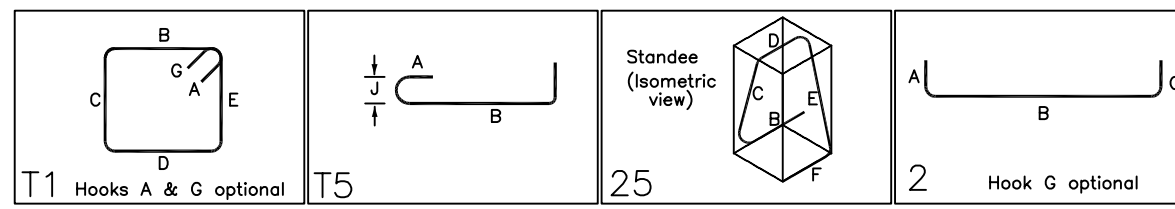


1 SECTION
SCALE: 1/2" = 1'-0"
REF: 4/S301 (DT.06/24/22)

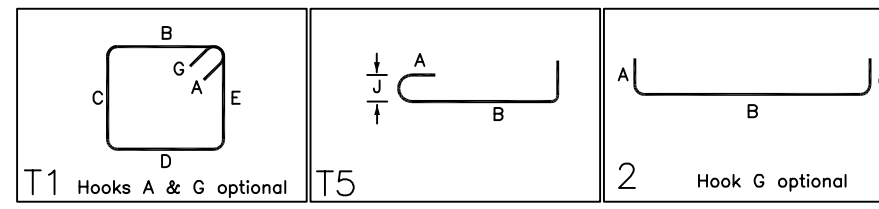


2 SECTION
SCALE: 1/2" = 1'-0"
REF: 6/S301 (DT.06/24/22)

BENDING DETAILS												
Bar Mark	Qty	Size	Total Length	Type	X	Y	Z	W	V	U	T	S
3A01	132	#3	13'-4"	11	0'-4"	2'-8"	3'-8"	2'-8"	3'-8"	0'-4"		
3A02	244	#3	3'-5"	15	0'-5"	2'-8"				0'-4"		
3A03	152	#3	4'-5"	15	0'-5"	3'-8"				0'-4"		
3A04	96	#3	2'-11"	15	0'-5"	2'-2"				0'-4"		
3A05	48	#3	3'-9"	15	0'-5"	3'-0"				0'-4"		
3A06	48	#3	11'-0"	11	0'-4"	2'-2"	3'-0"	2'-2"	3'-0"	0'-4"		
3A07	47	#3	2'-5"	15	0'-5"	1'-8"				0'-4"		
3A08	21	#3	7'-4"	11	0'-4"	1'-8"	1'-8"	1'-8"	1'-8"	0'-4"		
3A14	19	#3	10'-4"	11	0'-4"	2'-0"	2'-10"	2'-0"	2'-10"	0'-4"		
3A15	24	#3	12'-8"	11	0'-4"	2'-6"	3'-6"	2'-6"	3'-6"	0'-4"		
3A16	3	#3	6'-10"	11	0'-4"	1'-6"	1'-6"	1'-6"	1'-6"	0'-4"		
3A01	52	#5	6'-7"	25	1'-6"	1'-4"	0'-10"	1'-4"	1'-6"	1'-4"	0'-8"	
3A02	90	#5	8'-6"	25	1'-6"	2'-4"	0'-10"	2'-4"	1'-6"	2'-5"	1'-1"	
3A03	32	#5	8'-7"	25	1'-6"	2'-4"	0'-10"	2'-4"	1'-6"	2'-3"	1'-2"	
6A01	16	#6	4'-5"	2	1'-0"	3'-5"						
6A02	8	#6	5'-11"	2	1'-0"	4'-11"						
6A01	50	#8	7'-11"	2	1'-0"	6'-11"						
6A02	40	#8	5'-11"	2	1'-0"	4'-11"						
6A03	60	#8	7'-5"	2	1'-0"	6'-5"						
6A04	30	#8	4'-5"	2	1'-0"	3'-5"						
6A05	30	#8	8'-5"	2	1'-0"	7'-5"						



BENDING DETAILS												
Bar Mark	Qty	Size	Total Length	Type	X	Y	Z	W	V	U	T	S
3A09	3	#3	6'-0"	11	0'-4"	1'-4"	1'-4"	1'-4"	1'-4"	0'-4"		
3A10	384	#3	2'-1"	15	0'-5"	1'-4"				0'-4"		
3A11	322	#3	6'-4"	11	0'-4"	1'-4"	1'-6"	1'-4"	1'-6"	0'-4"		
3A12	386	#3	2'-3"	15	0'-5"	1'-6"				0'-4"		
3A13	32	#3	6'-8"	11	0'-4"	1'-6"	1'-6"	1'-6"	1'-6"	0'-4"		
6A01	24	#6	4'-5"	2	1'-0"	3'-5"						
6A03	24	#6	7'-4"	2	1'-0"	6'-9"						
6A04	48	#6	3'-11"	2	1'-0"	2'-11"						
6A05	144	#6	6'-5"	2	1'-0"	5'-5"						
6A06	8	#6	4'-11"	2	1'-0"	3'-11"						
6A07	64	#6	6'-9"	2	1'-0"	5'-9"						
6A08	32	#6	7'-5"	2	1'-0"	6'-5"						
6A09	8	#6	7'-11"	2	1'-0"	6'-11"						



**ALL BARS IN THIS DRAWING
ASTM A615 GRADE 60
BLACK UNCOATED**

TYPICAL REINFORCING BAR CLEARANCE TABLE	
LOCATION	MIN. COVER
FOOTING SIDE & BOTTOM	3" CLR
FOOTING TOP	2" CLR
TIES	2" CLR

LAP SCHEDULE

3000 PSI (CLASS-B) CASE - 1
Per ACI:318 (12.2.2)

BAR#	LENGTHS	
	TOP	OTHERS
#3	2'-4"	1'-10"
#4	3'-1"	2'-5"
#5	3'-11"	3'-0"
#6	4'-8"	3'-7"
#7	6'-9"	5'-3"
#8	7'-9"	6'-0"
#9	8'-9"	6'-9"
#10	9'-10"	7'-7"
#11	10'-11"	8'-5"

ALL TOP BARS ARE DEFINED AS HORIZ BARS WITH MORE THAN 12" OF CONCRETE BELOW BARS.

REBAR GRADE 60 ASTM A-615

SPLICES USED

CLASS B 4,000 psi UNO

TOP BARS	OTHER BARS
#3	#3
#4	#4
#5	#5
#6	#6
#7	#7
#8	#8
#9	#9
#10	#10
#11	#11
#14	#14

ABBREVIATIONS

- ADD. = Additional
- B.O.W. = Bottom of wall
- C.B. = Corner Bars
- DIAG. = Diagonal
- D.O. = Door Opening
- D.W.L.S. = Dowels
- E.F. = Each Face
- E.S. = Each Side
- E.W. = Each Way
- FTG. = Footing
- F.F. = Far Face
- HORIZ. = Horizontal
- I.F. = Inside Face
- INTERS. = Intersection
- L.W. = long Way
- N.F. = Near Face
- O.F. = Outside Face
- S.W. = Short Way
- T&B = Top & Bottom
- T.O.W. = Top of Wall
- Trans. = Transverse
- VERT. = Vertical

BAR MARK SIZE EQUIVALENT

Imperial	Soft Metric
#3	#10
#4	#13
#5	#16
#6	#19
#7	#22
#8	#25
#9	#29
#10	#32
#11	#36

T. FORD AXCELIS WAREHOUSE
SPREAD FOOTING/PIER REINFORCEMENT DETAILS
BEVERLY, MA 01915

CUSTOMER: GREEN LEAF CONSTRUCTION
DESIGNER: TFM STRUCTURAL ENGINEERS

REV NO	DATE	APPROVAL	SENT FOR	REV NO	DATE	SENT FOR
0	09.01.22					

DRAWN BY	DATE	JOB NO	SHEET NO.
RTP/SS	09.01.22	M92207060	R02