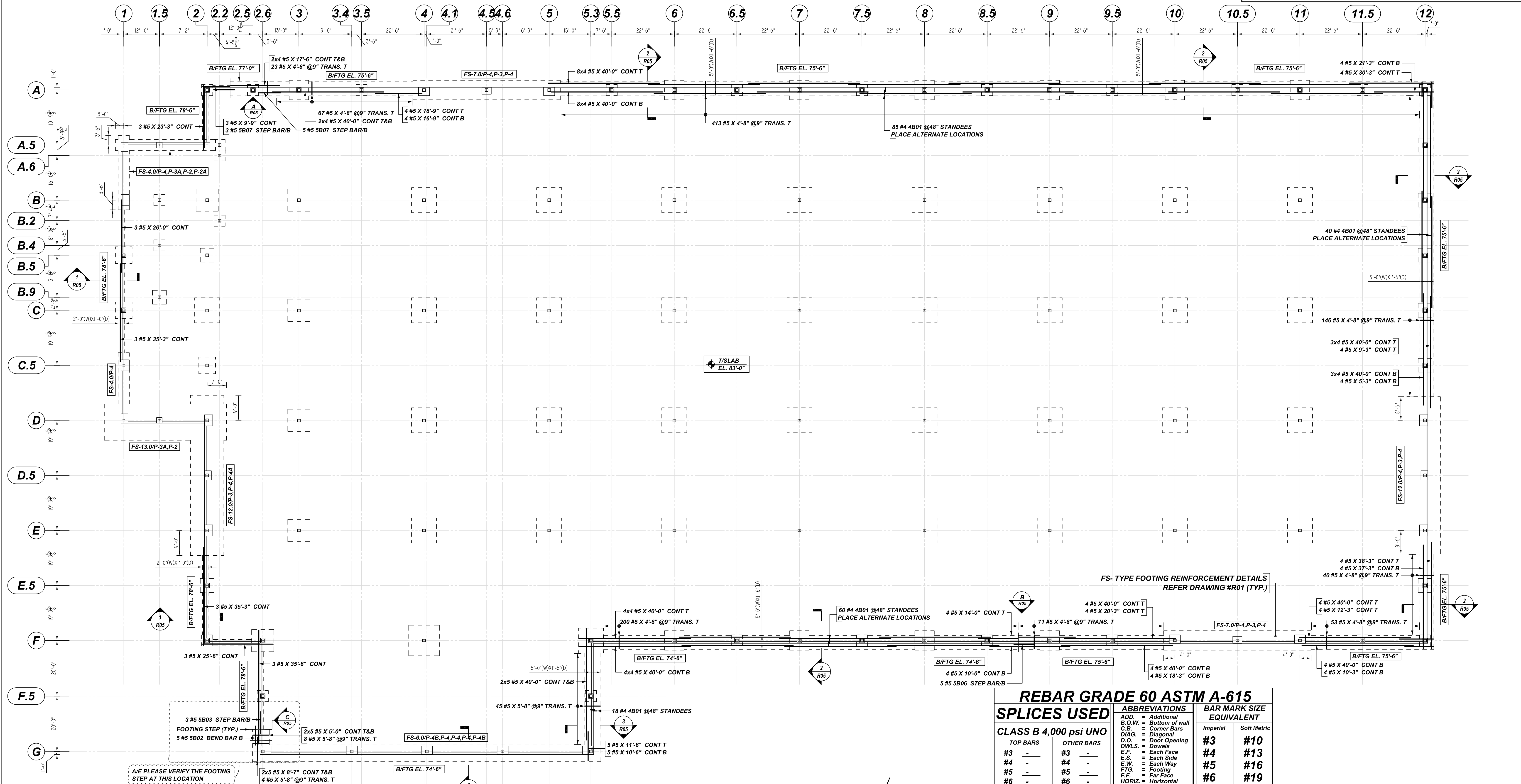


NOTICE

SHORTAGES, IMPROPER FABRICATION OR CLAIMS FOR ANY OTHER REASON MUST BE REPORTED TO THIS COMPANY WITHIN 10 DAYS FROM ORIGINAL DELIVERY. THIS COMPANY ALSO RESERVES THE RIGHT TO FIELD INSPECT MATERIALS PRIOR TO REPLACEMENT OR RECONDITIONING OF MATERIALS AND WILL NOT BE LIABLE FOR CHARGES FROM WORK DONE IN THE FIELD WITHOUT PRIOR AUTHORIZATION FROM THIS COMPANY.

REINFORCING STEEL PLACING DRAWING ONLY. USE IN CONJUNCTION WITH CONTRACT DRAWINGS & SPECIFICATIONS. ELEVATIONS & DIMENSIONS SHOWN ON DRAWING ARE FOR DETAILING PURPOSES ONLY AND SHOULD NOT BE USED FOR CONSTRUCTION UNLESS VERIFIED BY ENGINEER OR CONTRACTOR.



A/E PLEASE VERIFY THE FOOTING STEP AT THIS LOCATION

FOR BAR BENDING SCHEDULE REFER DRAWING - R05

WALL FOOTING REINFORCEMENT DETAILS
 SCALE: 1/16" = 1'-0"
 REF: S101 (DT.06/24/22)

REBAR GRADE 60 ASTM A-615

SPLICES USED

CLASS B 4,000 psi UNO

TOP BARS	OTHER BARS
#3	#3
#4	#4
#5	#5
#6	#6
#7	#7
#8	#8
#9	#9
#10	#10
#11	#11
#14	#14

ABBREVIATIONS

ADD.	= Additional
B.O.W.	= Bottom of wall
C.B.	= Corner Bars
DIAG.	= Diagonal
D.O.	= Door Opening
DWLS.	= Dowels
E.F.	= Each Face
E.S.	= Each Side
E.W.	= Each Way
FTG.	= Footing
F.F.	= Far Face
HORIZ.	= Horizontal
I.F.	= Inside Face
INTERS.	= Intersection
L.W.	= Long Way
N.F.	= Near Face
O.F.	= Outside Face
S.W.	= Short Way
T&B	= Top & Bottom
T.O.W.	= Top of Wall
Trans.	= Transverse
VERT.	= Vertical

BAR MARK SIZE EQUIVALENT

Imperial	Soft Metric
#3	#10
#4	#13
#5	#16
#6	#19
#7	#22
#8	#25
#9	#29
#10	#32
#11	#36

T. FORD AXCELIS WAREHOUSE
 WALL FOOTING / WALL DOWEL REINFORCEMENT DETAILS
 BEVERLY, MA 01915

CUSTOMER: GREEN LEAF CONSTRUCTION
 DESIGNER: TFM STRUCTURAL ENGINEERS

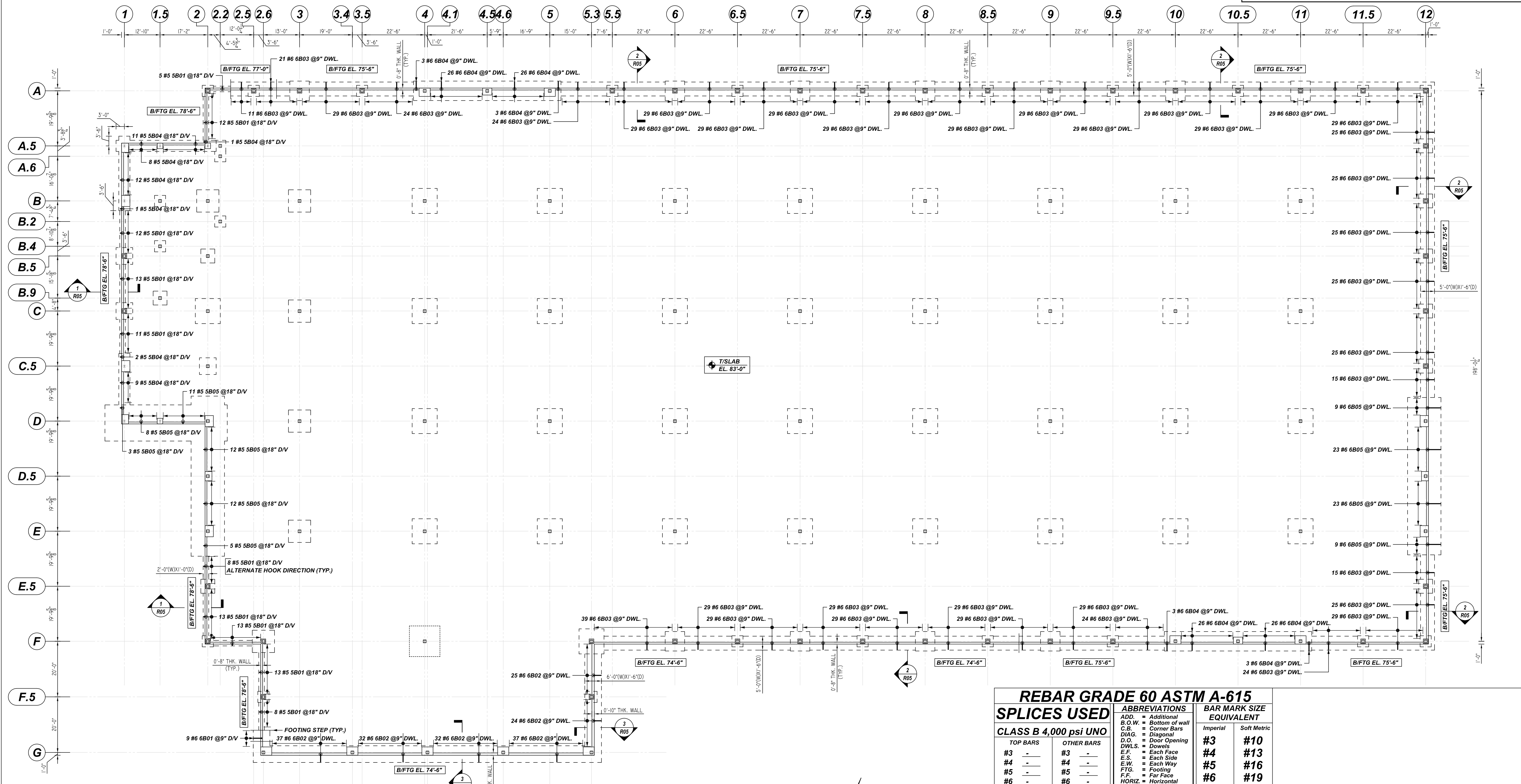
REV NO	DATE	SENT FOR	REV NO	DATE	SENT FOR
0	09.06.22	APPROVAL			

DRAWN BY	DATE	JOB NO	SHEET NO.
RTP/SS	09.06.22	M92270760	R03

NOTICE

SHORTAGES, IMPROPER FABRICATION OR CLAIMS FOR ANY OTHER REASON MUST BE REPORTED TO THIS COMPANY WITHIN 10 DAYS FROM ORIGINAL DELIVERY. THIS COMPANY ALSO RESERVES THE RIGHT TO FIELD INSPECT MATERIALS PRIOR TO REPLACEMENT OR RECONDITIONING OF MATERIALS AND WILL NOT BE LIABLE FOR CHARGES FROM WORK DONE IN THE FIELD WITHOUT PRIOR AUTHORIZATION FROM THIS COMPANY.

REINFORCING STEEL PLACING DRAWING ONLY. USE IN CONJUNCTION WITH CONTRACT DRAWINGS & SPECIFICATIONS. ELEVATIONS & DIMENSIONS SHOWN ON DRAWING ARE FOR DETAILING PURPOSES ONLY AND SHOULD NOT BE USED FOR CONSTRUCTION UNLESS VERIFIED BY ENGINEER OR CONTRACTOR.



FOR BAR BENDING SCHEDULE
REFER DRAWING - R05

WALL DOWEL REINFORCEMENT DETAILS

SCALE: 1/16" = 1'-0"
REF: S101 (DT.06/24/22)

REBAR GRADE 60 ASTM A-615

SPLICES USED

CLASS B 4,000 psi UNO

TOP BARS	OTHER BARS
#3	#3
#4	#4
#5	#5
#6	#6
#7	#7
#8	#8
#9	#9
#10	#10
#11	#11
#14	#14

ABBREVIATIONS

- ADD. = Additional
- B.O.W. = Bottom of wall
- C.B. = Corner Bars
- DIAG. = Diagonal
- D.O. = Door Opening
- D.W.L. = Dowels
- E.F. = Each Face
- E.S. = Each Side
- E.W. = Each Way
- FTG. = Footing
- F.F. = Far Face
- HORIZ. = Horizontal
- I.F. = Inside Face
- INTERS. = Intersection
- L.W. = long Way
- N.F. = Near Face
- O.F. = Outside Face
- S.W. = Short Way
- T&B = Top & Bottom
- T.O.W. = Top of Wall
- Trans. = Transverse
- VERT. = Vertical

BAR MARK SIZE EQUIVALENT

Imperial	Soft Metric
#3	#10
#4	#13
#5	#16
#6	#19
#7	#22
#8	#25
#9	#29
#10	#32
#11	#36

T. FORD AXCELIS WAREHOUSE
WALL FOOTING / WALL DOWEL REINFORCEMENT DETAILS
BEVERLY, MA 01915

CUSTOMER: GREEN LEAF CONSTRUCTION
DESIGNER: TFM STRUCTURAL ENGINEERS

REV NO	DATE	SENT FOR	REV NO	DATE	SENT FOR
0	09.06.22	APPROVAL			

DRAWN BY	DATE	JOB NO	SHEET NO.
RTP/SS	09.06.22	M92270760	R04

