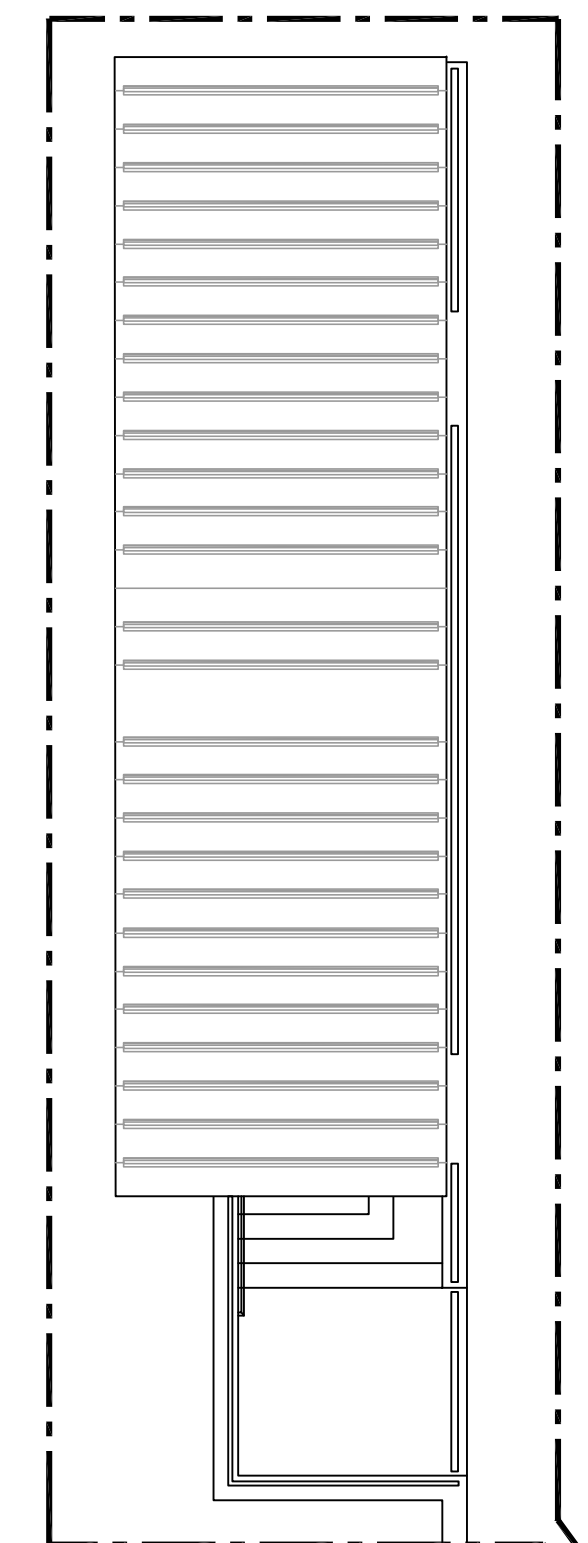
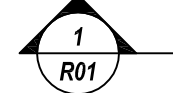


NOTICE
 SHORTAGES, IMPROPER FABRICATION OR CLAIMS FOR ANY OTHER REASON MUST BE REPORTED TO THIS COMPANY WITHIN 10 DAYS FROM ORIGINAL DELIVERY. THIS COMPANY ALSO RESERVES THE RIGHT TO FIELD INSPECT MATERIALS PRIOR TO REPLACEMENT OR RECONDITIONING OF MATERIALS AND WILL NOT BE LIABLE FOR CHARGES FOR WORK DONE IN THE FIELD WITHOUT PRIOR AUTHORIZATION FROM THIS COMPANY.

REINFORCING STEEL PLACING DRAWING ONLY. USE IN CONJUNCTION WITH CONTRACT DRAWINGS & SPECIFICATIONS. ELEVATIONS & DIMENSIONS SHOWN ON DRAWING ARE FOR DETAILING PURPOSES ONLY AND SHOULD NOT BE USED FOR CONSTRUCTION UNLESS VERIFIED BY ENGINEER OR CONTRACTOR.



HOME DUGOUT - REFER R02 & R03



RETAINING WALL



RETAINING WALL



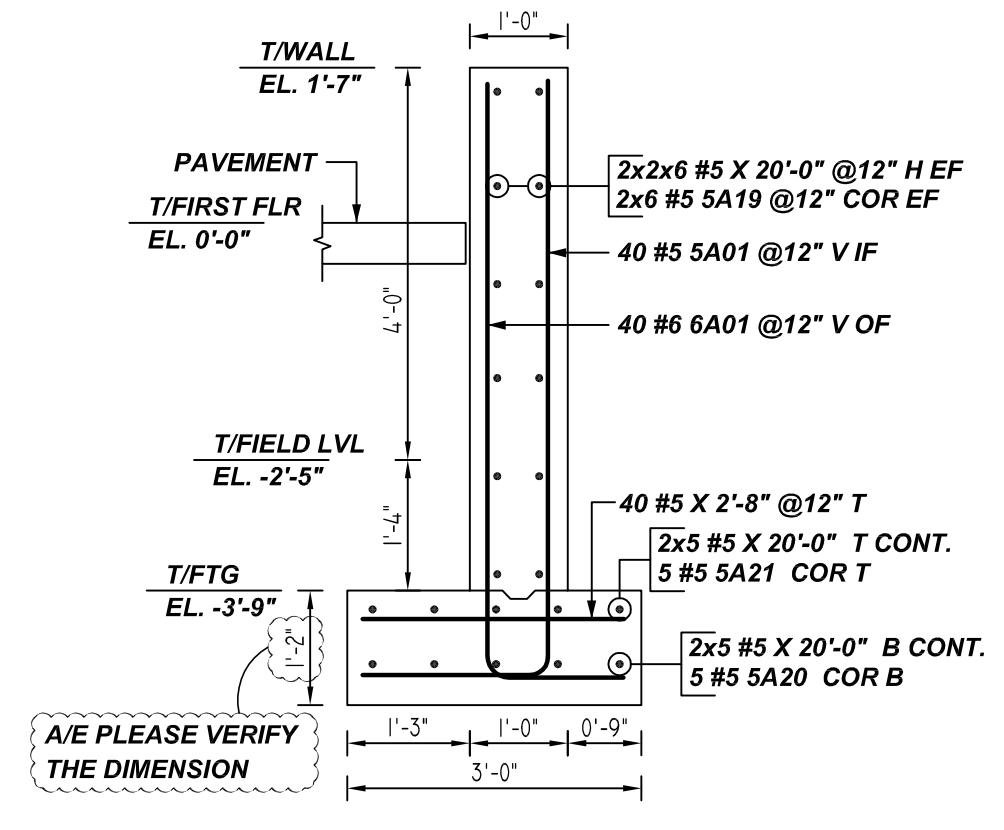
PRESSBOX - REFER R06

VISITORS DUGOUT - REFER R04 & R05

CAPITAL ONE EAST BASEBALL FIELD - PARTIAL LAYOUT

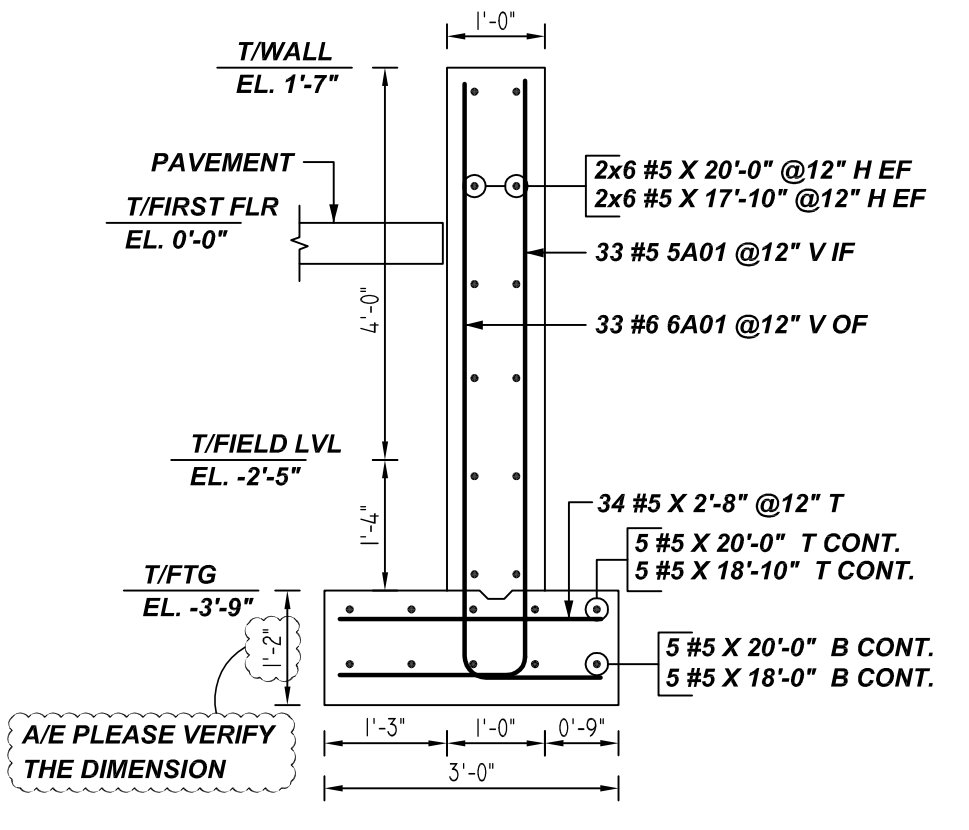
A/E PLEASE VARY NORTH DIRECTION

REF: A-100 (DT.06/15/22)
 SCALE: 1/8" = 1'-0"

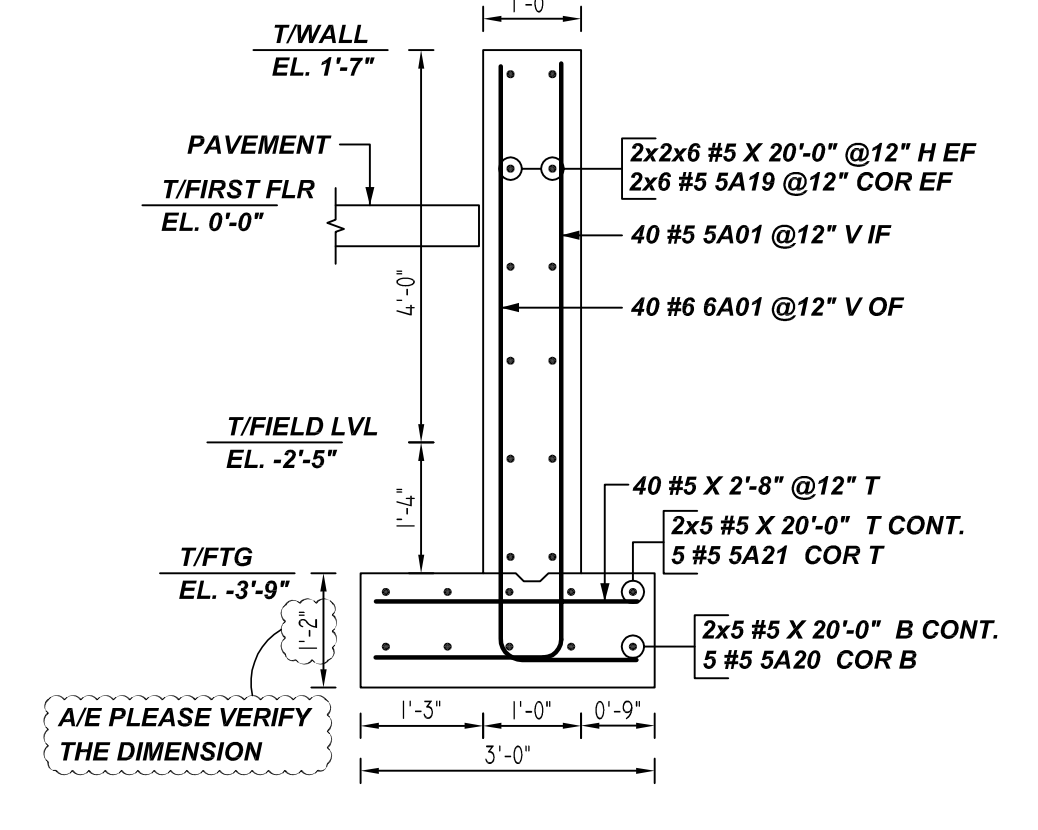


1 SECTION
 REF: S-101, S-302 (DT.06/15/22)
 SCALE: 1/2" = 1'-0"

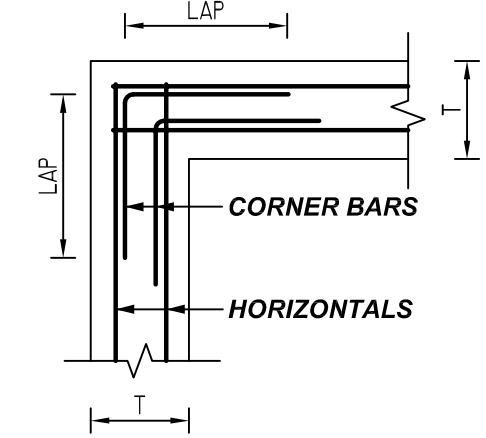
A/E PLEASE VERIFY RETAINING WALL SECTION (TYP.)



2 SECTION
 REF: S-101, S-302 (DT.06/15/22)
 SCALE: 1/2" = 1'-0"



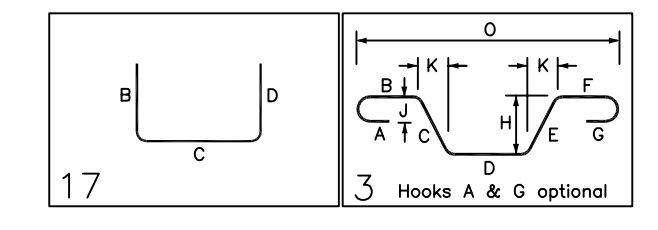
3 SECTION
 REF: S-101, S-302 (DT.06/15/22)
 SCALE: 1/2" = 1'-0"



TYPICAL WALL CORNER DETAIL
 REF: S101 (DT.16/15/22)
 SCALE: 1/2" = 1'-0"

A/E PLEASE VERIFY WALL CORNER DETAIL.

Bar Mark	Qty	Size	Total Length	Type	X	Y	Z	BAR LIST
SA01	113	#5	8'-0"	17	6'-1"	1'-11"		
SA19	24	#5	10'-5 1/2"	3	6'-7"	3'-10 1/2"		
SA20	10	#5	8'-11 1/2"	3	6'-0"	2'-11 1/2"		
SA21	10	#5	10'-7 1/2"	3	6'-9"	3'-10 1/2"		
6A01	113	#6	7'-8"	17	6'-1"	1'-5"		



A/E PLEASE VERIFY LAP SCHEDULE PROVIDED FOR FOOTING.

LAP SCHEDULE

3000 PSI (CLASS-B) CASE - 1
 Per ACI :318 (12.2.2)

BAR#	LENGTHS	
	TOP	OTHERS
#3	2'-4"	1'-10"
#4	3'-1"	2'-5"
#5	3'-11"	3'-0"
#6	4'-8"	3'-7"
#7	6'-9"	5'-3"
#8	7'-9"	6'-0"
#9	8'-9"	6'-9"
#10	9'-10"	7'-7"
#11	10'-11"	8'-5"

ALL TOP BARS ARE DEFINED AS HORIZ BARS WITH MORE THAN 12" OF CONCRETE BELOW BARS.

LAP SCHEDULE

4000 PSI (CLASS-B) CASE - 1
 Per ACI :318 (12.2.2)

BAR#	LENGTHS	
	TOP	OTHERS
#3	2'-0"	1'-7"
#4	2'-8"	2'-1"
#5	3'-4"	2'-7"
#6	4'-0"	3'-1"
#7	5'-10"	4'-6"
#8	6'-8"	5'-2"
#9	7'-7"	5'-10"
#10	8'-6"	6'-7"
#11	9'-5"	7'-3"

ALL TOP BARS ARE DEFINED AS HORIZ BARS WITH MORE THAN 12" OF CONCRETE BELOW BARS.

NOTES

LOCATION	MIN. COVER
FOOTING BOTTOM	3" CLR
FOOTING TOP & SIDE	2" CLR
WALL OF & IF	2" CLR
WALL END	2" CLR

**ALL BARS IN THIS DRAWING
 ASTM A615 GRADE 60
 BLACK UNCOATED**

REBAR GRADE 60 ASTM A-615

SPLICES USED		ABBREVIATIONS		BAR MARK SIZE EQUIVALENT	
CLASS B 4,000 psi UNO		ADD.	= Additional		
TOP BARS		B.O.W.	= Bottom of wall		
OTHER BARS		C.B.	= Corner Bars		
#3	#3	DIAG.	= Diagonal	#3	#10
#4	#4	D.O.	= Door Opening	#4	#13
#5	#5	DWLS.	= Dowels	#5	#16
#6	#6	E.F.	= Each Face	#6	#19
#7	#7	E.S.	= Each Side	#7	#22
#8	#8	E.W.	= Each Way	#8	#25
#9	#9	FTG.	= Footing	#9	#29
#10	#10	F.F.	= Far Face	#10	#32
#11	#11	HORIZ.	= Horizontal	#11	#36
#14	#14	I.F.	= Inside Face		
		INTERS.	= Intersection		
		L.W.	= Long Way		
		N.F.	= Near Face		
		O.F.	= Outside Face		
		S.W.	= Short Way		
		T&B	= Top & Bottom		
		T.O.W.	= Top of Wall		
		Trans.	= Transverse		
		VERT.	= Vertical		

CAPITAL ONE EAST BASEBALL FIELD
 CAPITAL ONE EAST BASEBALL FIELD - PARTIAL LAYOUT
 PROVIDENCE DISTRICT - FAIRFAX COUNTY VIRGINIA
 CUSTOMER: BAY COUNTRY PROFESSIONAL CONCRETE
 DESIGNER: ---

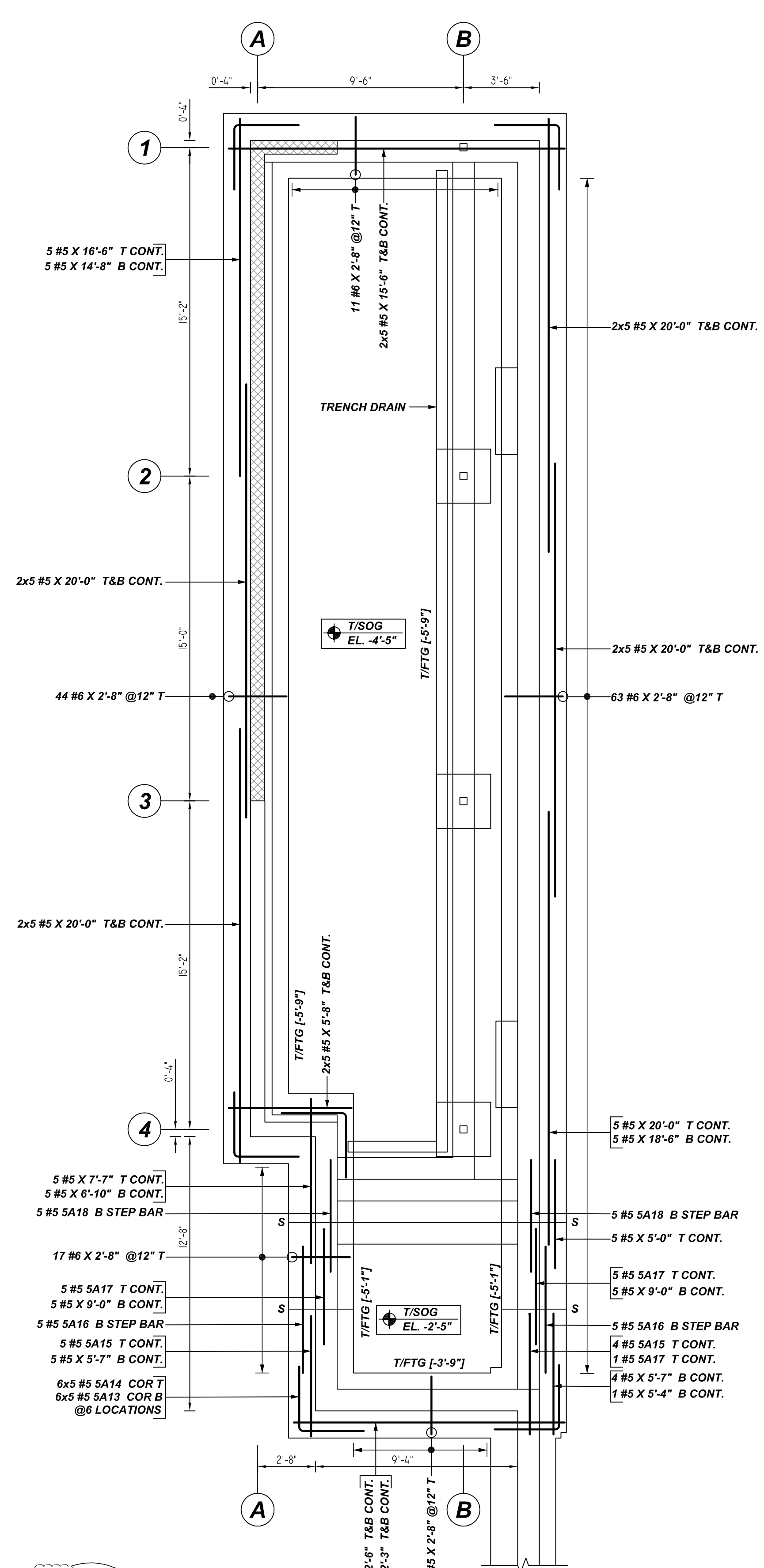
REV NO	DATE	SENT FOR	REV NO	DATE	SENT FOR
0	10.19.22	APPROVAL			

DRAWN BY	DATE	JOB NO	SHEET NO.
RTE/SS	10.19.22	M92270922P	R01

NOTICE

SHORTAGES, IMPROPER FABRICATION OR CLAIMS FOR ANY OTHER REASON MUST BE REPORTED TO THIS COMPANY WITHIN 10 DAYS FROM ORIGINAL DELIVERY. THIS COMPANY ALSO RESERVES THE RIGHT TO FIELD INSPECT MATERIALS PRIOR TO REPLACEMENT OR RECONDITIONING OF MATERIALS AND WILL NOT BE LIABLE FOR CHARGES FROM WORK DONE IN THE FIELD WITHOUT PRIOR AUTHORIZATION FROM THIS COMPANY.

REINFORCING STEEL PLACING DRAWING ONLY. USE IN CONJUNCTION WITH CONTRACT DRAWINGS & SPECIFICATIONS. ELEVATIONS & DIMENSIONS SHOWN ON DRAWING ARE FOR DETAILING PURPOSES ONLY AND SHOULD NOT BE USED FOR CONSTRUCTION UNLESS VERIFIED BY ENGINEER OR CONTRACTOR.

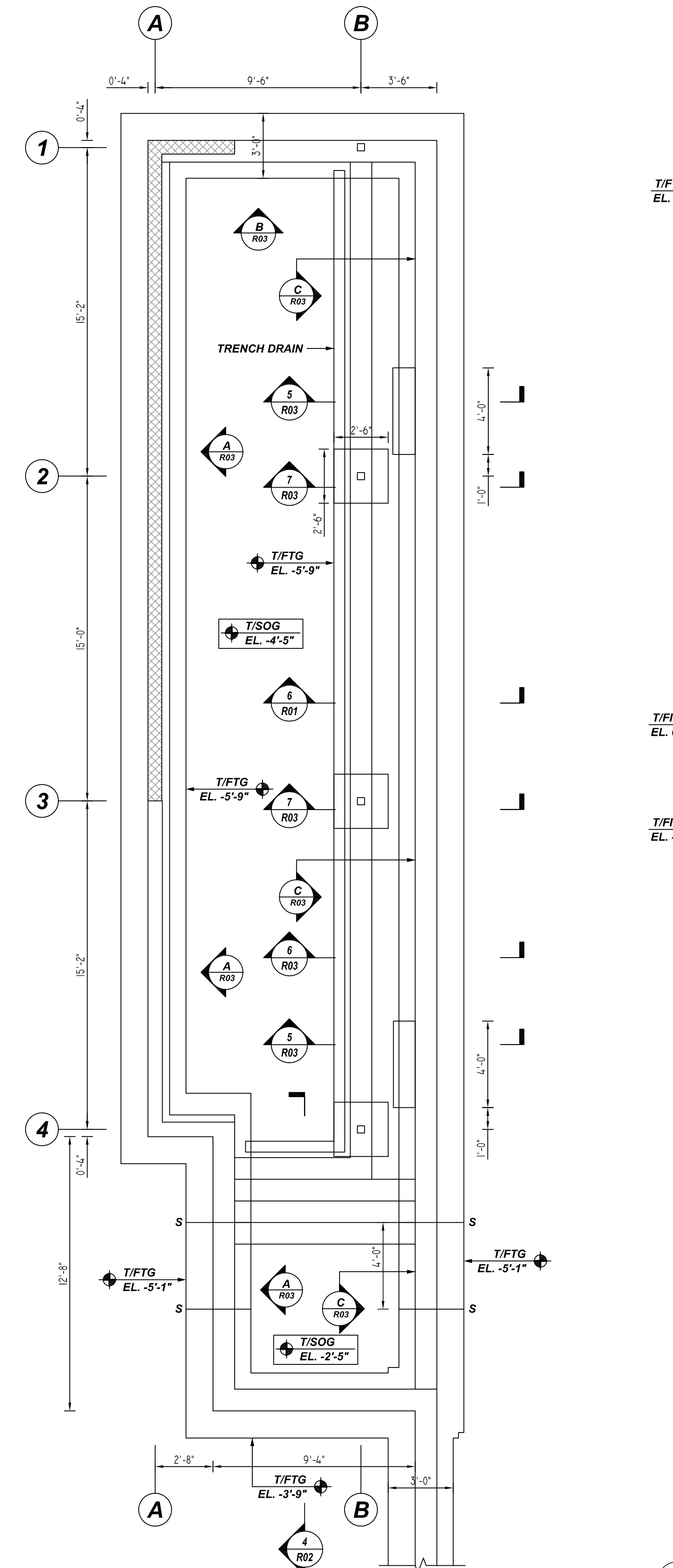


HOME DUGOUT - FOUNDATION REINFORCEMENT DETAILS
REF: S-101, S-302 & S-303 (DT.06/15/22)
SCALE: 1/4" = 1'-0"

MESH DETAILS				
S. NO	ELEMENT	MESH SIZE	SHEETS	AREA
1	5" THK SLAB ON GRADE	6x6 - W2.1XW2.1 WWF	6	745 SQ.FT

TYPICAL REINFORCING BAR CLEARANCE TABLE	
LOCATION	MIN. COVER
FOOTING BOTTOM	3" CLR
FOOTING TOP & SIDE	2" CLR
WALL OF & IF	2" CLR
WALL END	2" CLR

**ALL BARS IN THIS DRAWING
ASTM A615 GRADE 60
BLACK UNCOATED**



HOME DUGOUT - FOUNDATION REINFORCEMENT PLAN
REF: S-101, S-302 & S-303 (DT.06/15/22)
SCALE: 1/4" = 1'-0"

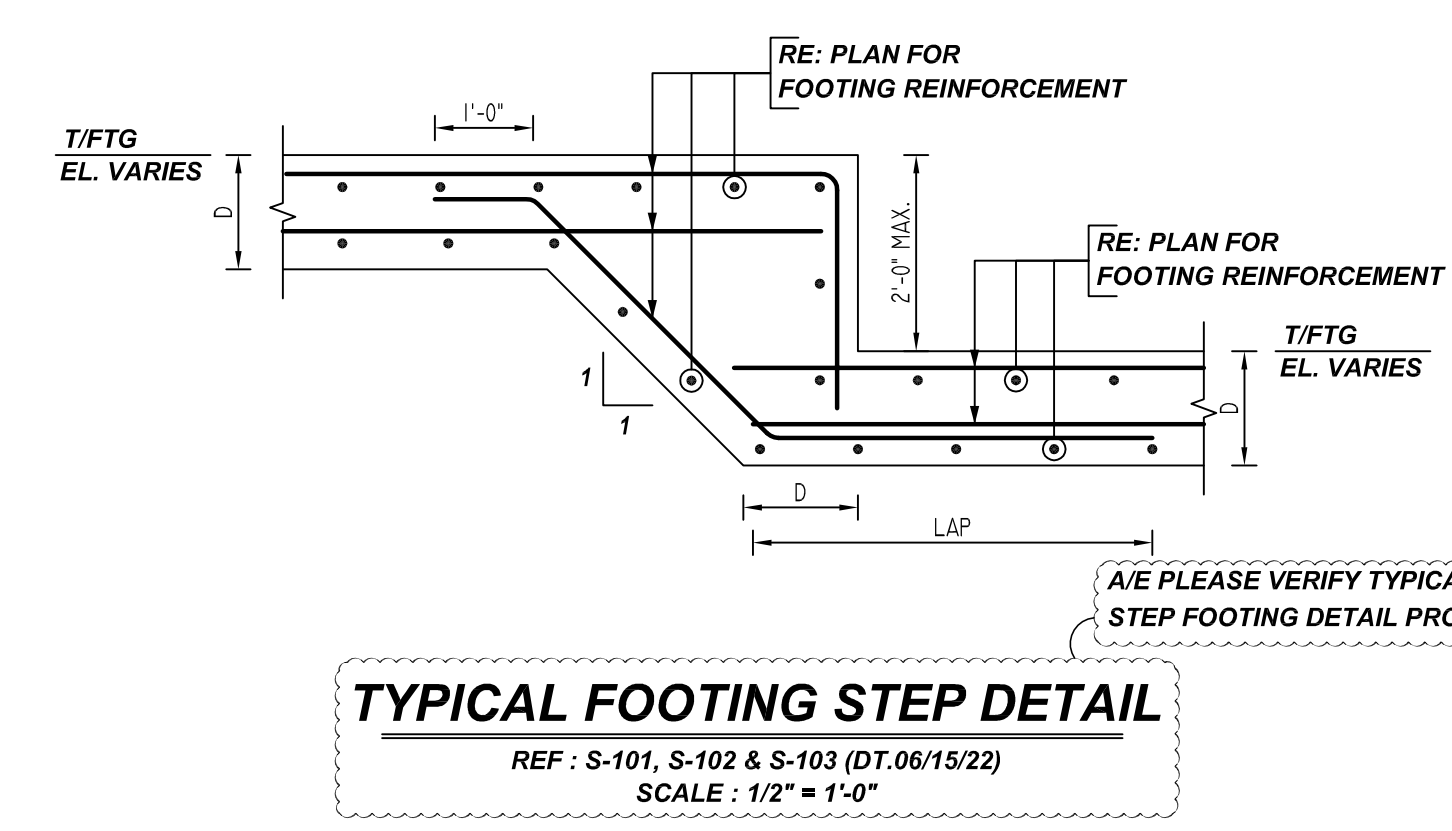
NOTES

LAP SCHEDULE

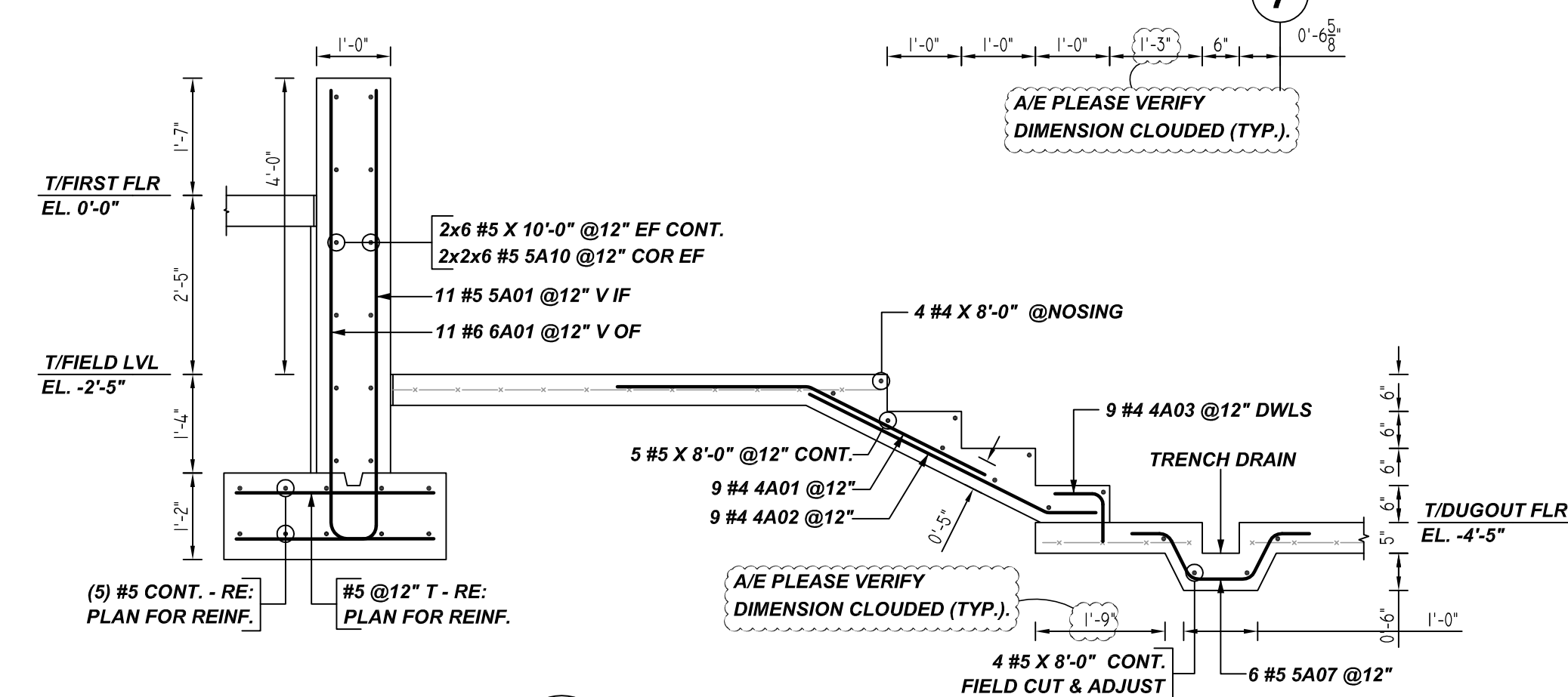
3000 PSI (CLASS-B) CASE - 1
Per ACI:318 (12.2.2)

LENGTHS		
BAR#	TOP	OTHERS
#3	2'-4"	1'-10"
#4	3'-1"	2'-5"
#5	3'-11"	3'-0"
#6	4'-8"	3'-7"
#7	6'-9"	5'-3"
#8	7'-9"	6'-0"
#9	8'-9"	6'-9"
#10	9'-10"	7'-7"
#11	10'-11"	8'-5"

ALL TOP BARS ARE DEFINED AS HORIZ BARS WITH MORE THAN 12" OF CONCRETE BELOW BARS.

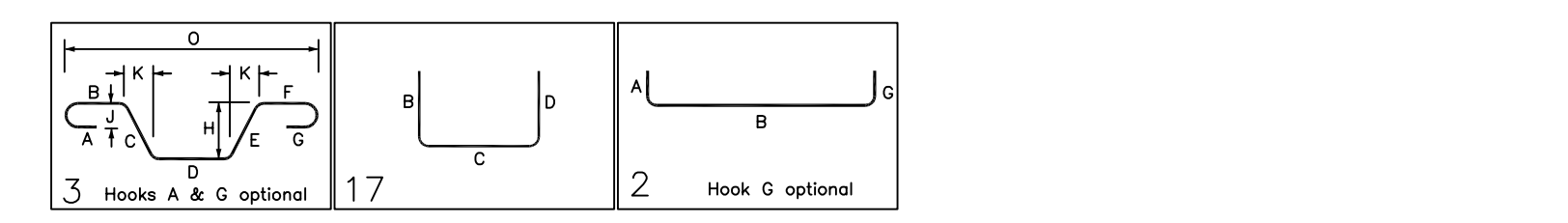


TYPICAL FOOTING STEP DETAIL
REF: S-101, S-102 & S-103 (DT.06/15/22)
SCALE: 1/2" = 1'-0"



SECTION 4
REF: S-102, S-302 & S-303 (DT.06/15/22)
SCALE: 1/2" = 1'-0"

Bar Mark	Qty	Size	Total Length	Type	X	Y	Z	W	V	U	T	S	R	Q	P	O	N	M	L	K	J	I	H	G	F	E	D	C	B	A
4A01	9	#4	5'-2 3/4"	3																										
4A02	9	#4	4'-2 3/4"	3																										
4A03	9	#4	4'-2 3/4"	3																										
4A04	9	#4	4'-2 3/4"	3																										
4A05	9	#4	4'-2 3/4"	3																										
4A06	9	#4	4'-2 3/4"	3																										
4A07	9	#4	4'-2 3/4"	3																										
4A08	9	#4	4'-2 3/4"	3																										
4A09	9	#4	4'-2 3/4"	3																										
4A10	9	#4	4'-2 3/4"	3																										



REBAR GRADE 60 ASTM A-615

SPLICES USED

CLASS B 4,000 psi UNO		ABBREVIATIONS		BAR MARK SIZE EQUIVALENT	
TOP BARS	OTHER BARS			Imperial	Soft Metric
#3	#3	ADD.	= Additional	#3	#10
#4	#4	B.O.W.	= Bottom of wall	#4	#13
#5	#5	C.B.	= Corner Bars	#5	#16
#6	#6	DIAG.	= Diagonal	#6	#19
#7	#7	D.O.	= Door Opening	#7	#22
#8	#8	D.W.L.S.	= Dowels	#8	#25
#9	#9	E.F.	= Each Face	#9	#29
#10	#10	E.S.	= Each Side	#10	#32
#11	#11	E.W.	= Each Way	#11	#36
		FTG.	= Footing		
		F.F.	= Far Face		
		HORIZ.	= Horizontal		
		I.F.	= Inside Face		
		INTERS.	= Intersection		
		L.W.	= Long Way		
		N.F.	= Near Face		
		O.F.	= Outside Face		
		S.W.	= Short Way		
		T&B	= Top & Bottom		
		T.O.W.	= Top of Wall		
		Trans.	= Transverse		
		VERT.	= Vertical		

CAPITAL ONE EAST BASEBALL FIELD

HOME DUGOUT - FOUNDATION REINFORCEMENT DETAILS

PROVIDENCE DISTRICT - FAIRFAX COUNTY VIRGINIA

CUSTOMER: BAY COUNTRY PROFESSIONAL CONCRETE

DESIGNER: ---

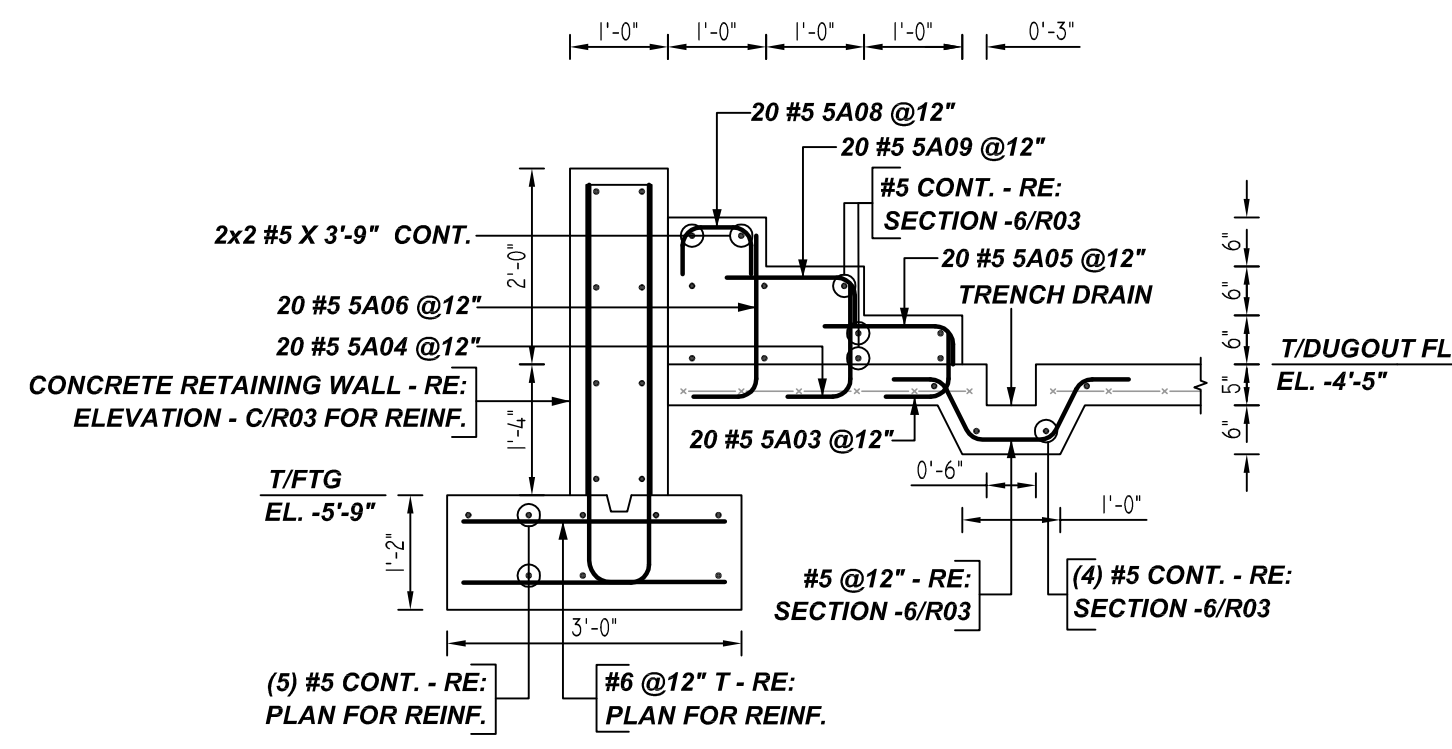
REV NO	DATE	APPROVAL	SENT FOR	REV NO	DATE	SENT FOR
0	10.19.22					

DRAWN BY	DATE	JOB NO	SHEET NO.
RTE/SS	10.19.22	M92270922P	R02

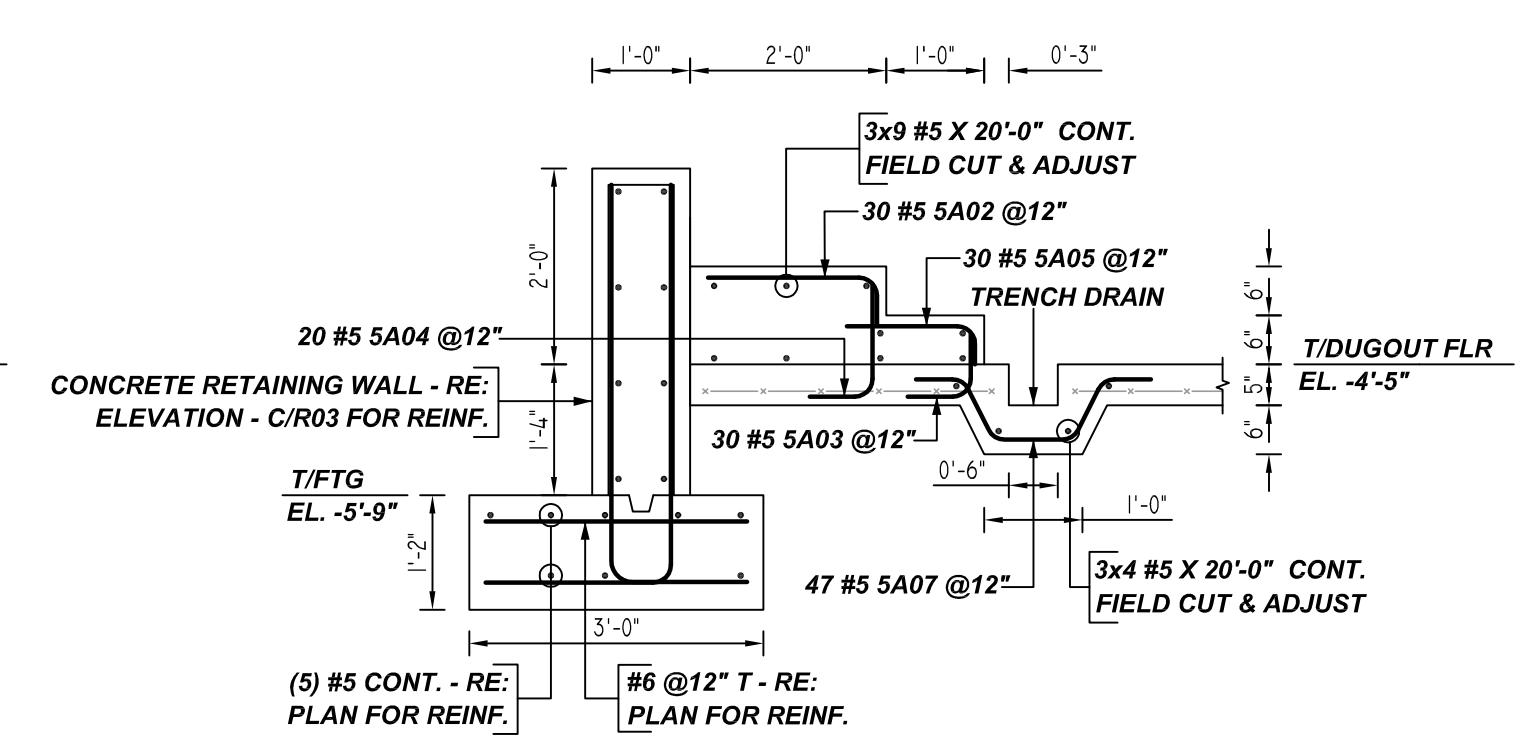
NOTICE

SHORTAGES, IMPROPER FABRICATION OR CLAIMS FOR ANY OTHER REASON MUST BE REPORTED TO THIS COMPANY WITHIN 10 DAYS FROM ORIGINAL DELIVERY. THIS COMPANY ALSO RESERVES THE RIGHT TO FIELD INSPECT MATERIALS PRIOR TO REPLACEMENT OR RECONDITIONING OF MATERIALS AND WILL NOT BE LIABLE FOR CHARGES FROM WORK DONE IN THE FIELD WITHOUT PRIOR AUTHORIZATION FROM THIS COMPANY.

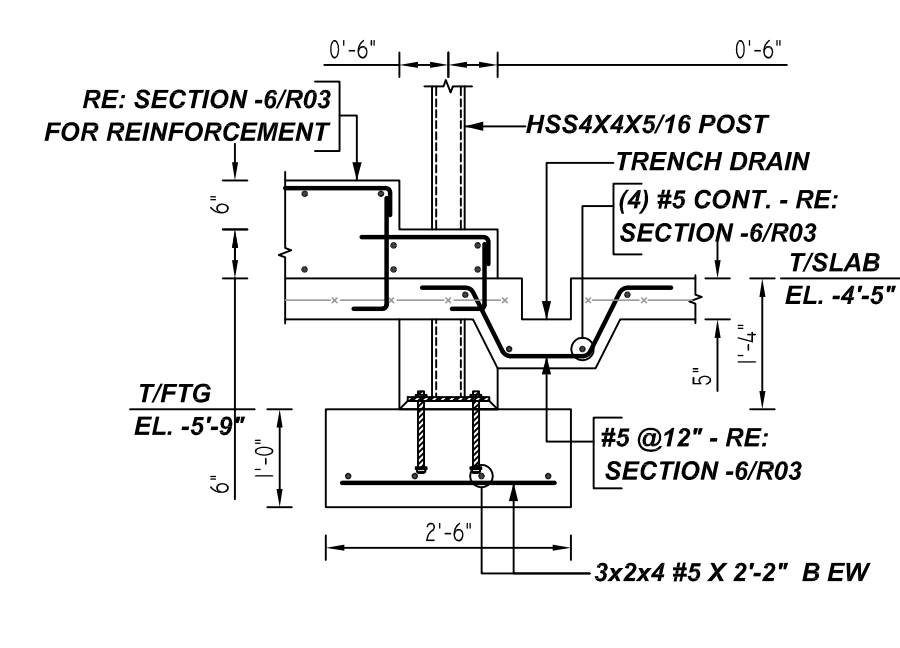
REINFORCING STEEL PLACING DRAWING ONLY. USE IN CONJUNCTION WITH CONTRACT DRAWINGS & SPECIFICATIONS. ELEVATIONS & DIMENSIONS SHOWN ON DRAWING ARE FOR DETAILING PURPOSES ONLY AND SHOULD NOT BE USED FOR CONSTRUCTION UNLESS VERIFIED BY ENGINEER OR CONTRACTOR.



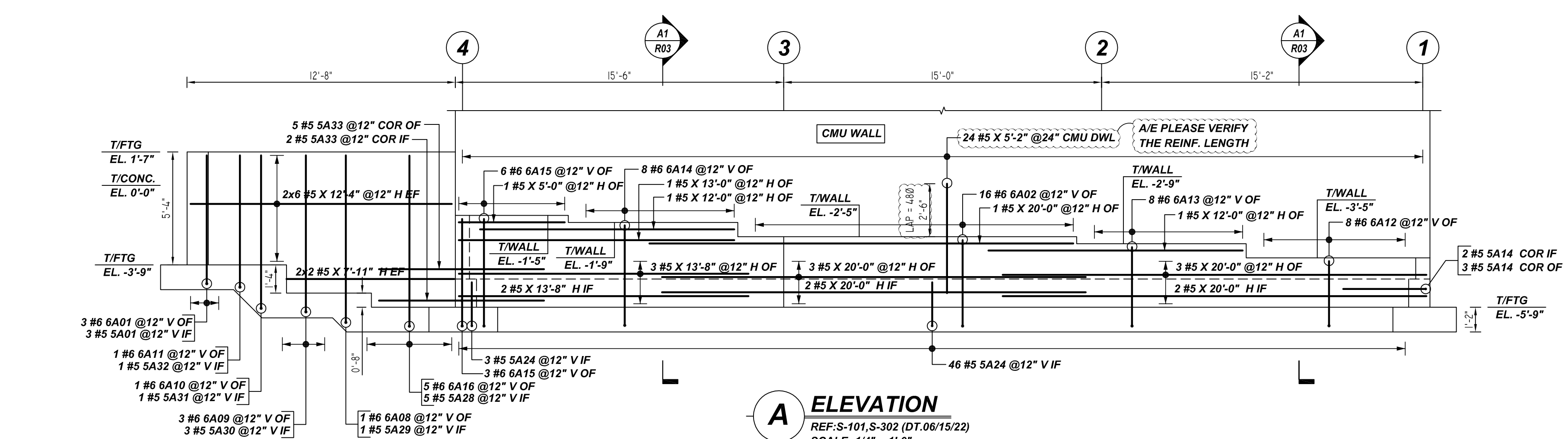
5 SECTION
REF: S-102, S-302 & S-303 (DT.06/15/22)
SCALE: 1/2" = 1'-0"



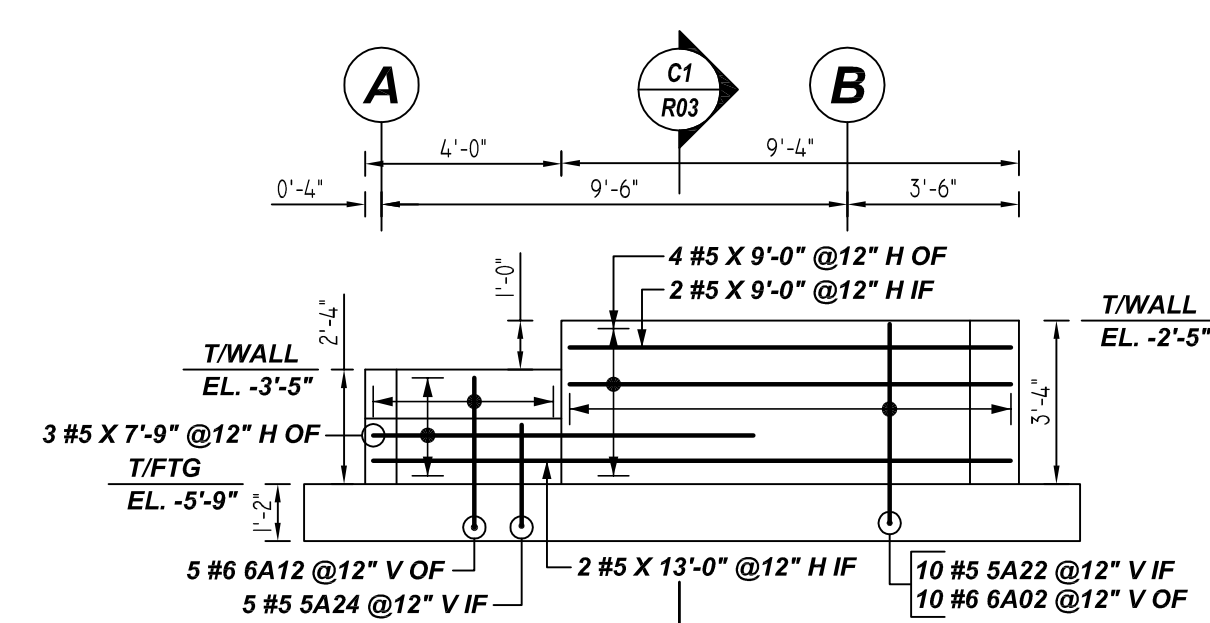
6 SECTION
REF: S-102, S-302 & S-303 (DT.06/15/22)
SCALE: 1/2" = 1'-0"



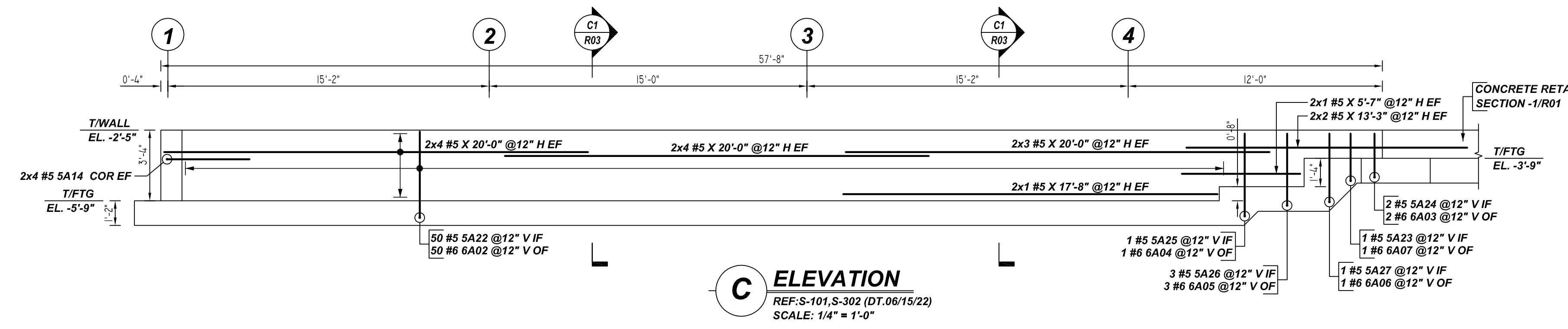
7 SECTION
REF: S-102, S-302 & S-303 (DT.06/15/22)
SCALE: 1/2" = 1'-0"
(@3 LOCATIONS)



A ELEVATION
REF: S-101, S-302 (DT.06/15/22)
SCALE: 1/4" = 1'-0"

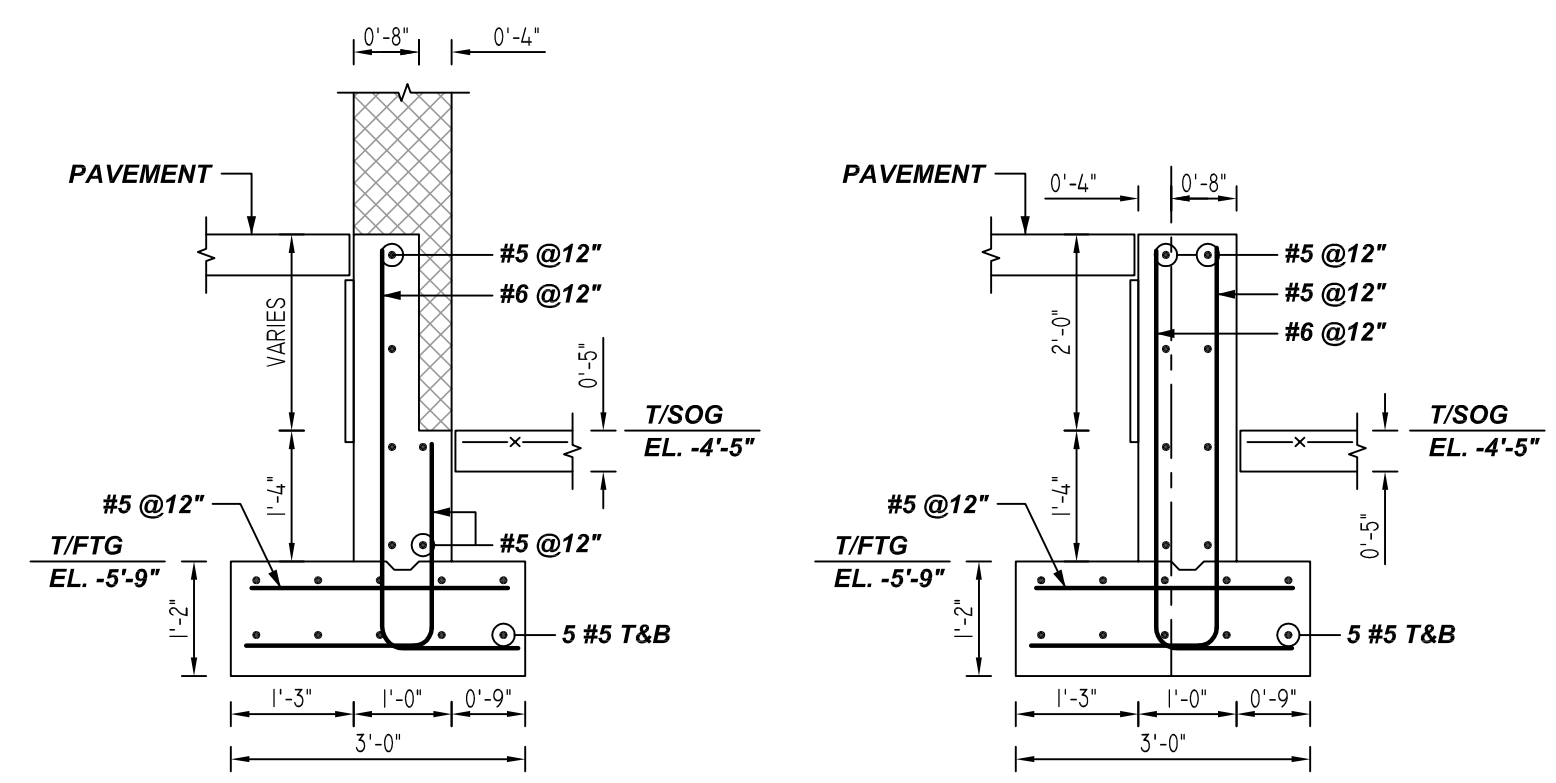
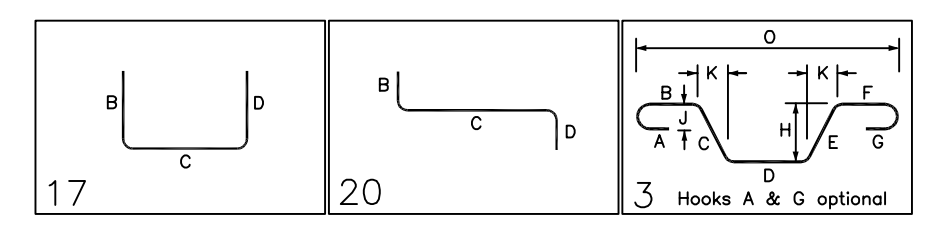


B ELEVATION
REF: S-101, S-302 (DT.06/15/22)
SCALE: 1/4" = 1'-0"



C ELEVATION
REF: S-101, S-302 (DT.06/15/22)
SCALE: 1/4" = 1'-0"

Bar Mark	Qty	Size	Total Length	Type	X	Y	Z	BAR LIST
5A02	30	#5	2'-7"	17				0'-4"
5A01	3	#5	8'-0"	17				6'-1"
5A05	50	#5	1'-9"	17				1'-4"
5A07	1	#5	5'-2"	17				3'-3"
5A06	3	#5	5'-4"	17				3'-5"
5A02	1	#5	8'-2"	17				6'-3"
5A31	1	#5	9'-2"	17				7'-3"
5A30	3	#5	8'-4"	17				7'-5"
5A29	1	#5	9'-10"	17				7'-11"
5A28	5	#5	10'-0"	17				8'-1"
5A33	7	#5	10'-10"	20				3'-11"
5A25	1	#5	5'-10"	17				3'-11"
5A04	40	#5	1'-10"	17				0'-8"
5A03	50	#5	1'-4"	17				0'-8"
5A08	20	#5	1'-9"	17				0'-6"
5A14	13	#5	7'-10"	17				3'-11"
5A06	20	#5	2'-4"	17				1'-8"
5A24	58	#5	4'-0"	17				2'-1"
6A12	13	#6	4'-6"	17				3'-1"
5A22	60	#5	6'-0"	17				4'-1"
6A02	76	#6	5'-6"	17				4'-1"
6A03	2	#6	3'-6"	17				2'-1"
6A23	1	#6	4'-2"	17				2'-3"
6A07	1	#6	3'-8"	17				2'-3"
6A06	1	#6	4'-8"	17				3'-3"
6A05	3	#6	4'-10"	17				3'-5"
6A04	1	#6	5'-4"	17				3'-11"
6A01	3	#6	7'-6"	17				6'-1"
6A11	1	#6	7'-6"	17				6'-3"
6A10	1	#6	8'-5"	17				7'-3"
6A09	3	#6	8'-10"	17				7'-5"
6A08	1	#6	9'-4"	17				7'-11"
6A16	5	#6	9'-6"	17				8'-1"
6A15	9	#6	6'-6"	17				5'-1"
6A14	8	#6	6'-2"	17				4'-9"
6A13	8	#6	5'-2"	17				3'-9"
5A09	20	#5	1'-10"	17				1'-4"
5A07	4	#5	3'-3"	3				0'-6"



A1 SECTION
REF: S-101, S-302 (DT.06/15/22)
SCALE: 1/2" = 1'-0"

C1 SECTION
REF: S-101, S-302 (DT.06/15/22)
SCALE: 1/2" = 1'-0"

NOTES

LOCATION	MIN. COVER
FOOTING BOTTOM	3" CLR
FOOTING TOP & SIDE	2" CLR
WALL OF & IF	2" CLR
WALL END	2" CLR

**ALL BARS IN THIS DRAWING
ASTM A615 GRADE 60
BLACK UNCOATED**

A/E PLEASE VERIFY LAP SCHEDULE PROVIDED FOR FOOTING.

LAP SCHEDULE
3000 PSI (CLASS-B) CASE - 1
Per ACI 318 (12.2.2)

BAR#	LENGTHS	
	TOP	OTHERS
#3	2'-4"	1'-10"
#4	3'-1"	2'-5"
#5	3'-11"	3'-0"
#6	4'-8"	3'-7"
#7	6'-9"	5'-3"
#8	7'-9"	6'-0"
#9	8'-9"	6'-9"
#10	9'-10"	7'-7"
#11	10'-11"	8'-5"

ALL TOP BARS ARE DEFINED AS HORIZ BARS WITH MORE THAN 12" OF CONCRETE BELOW BARS.

LAP SCHEDULE
4000 PSI (CLASS-B) CASE - 1
Per ACI 318 (12.2.2)

BAR#	LENGTHS	
	TOP	OTHERS
#3	2'-0"	1'-7"
#4	2'-8"	2'-1"
#5	3'-4"	2'-7"
#6	4'-0"	3'-1"
#7	5'-10"	4'-6"
#8	6'-8"	5'-2"
#9	7'-7"	5'-10"
#10	8'-6"	6'-7"
#11	9'-5"	7'-3"

ALL TOP BARS ARE DEFINED AS HORIZ BARS WITH MORE THAN 12" OF CONCRETE BELOW BARS.

REBAR GRADE 60 ASTM A-615

SPLICES USED

CLASS B 4,000 psi UNO	TOP BARS	OTHER BARS
#3	-	#3
#4	-	#4
#5	-	#5
#6	-	#6
#7	-	#7
#8	-	#8
#9	-	#9
#10	-	#10
#11	-	#11
#14	-	#14

ABBREVIATIONS		BAR MARK SIZE EQUIVALENT	
ADD.	= Additional	Imperial	Soft Metric
B.O.W.	= Bottom of wall	#3	#10
C.B.	= Corner Bars	#4	#13
DIAG.	= Diagonal	#5	#16
D.O.	= Door Opening	#6	#19
D.W.L.	= Dowels	#7	#22
E.F.	= Each Face	#8	#25
E.S.	= Each Side	#9	#29
E.W.	= Each Way	#10	#32
FTG.	= Footing	#11	#36
F.F.	= Far Face		
HORIZ.	= Horizontal		
I.F.	= Inside Face		
INTERS.	= Intersection		
L.W.	= Long Way		
N.F.	= Near Face		
O.F.	= Outside Face		
S.W.	= Short Way		
T&B	= Top & Bottom		
T.O.W.	= Top of Wall		
Trans.	= Transverse		
VERT.	= Vertical		

CAPITAL ONE EAST BASEBALL FIELD
HOME DUGOUT - FOUNDATION REINFORCEMENT DETAILS
PROVIDENCE DISTRICT - FAIRFAX COUNTY VIRGINIA
CUSTOMER: BAY COUNTRY PROFESSIONAL CONCRETE

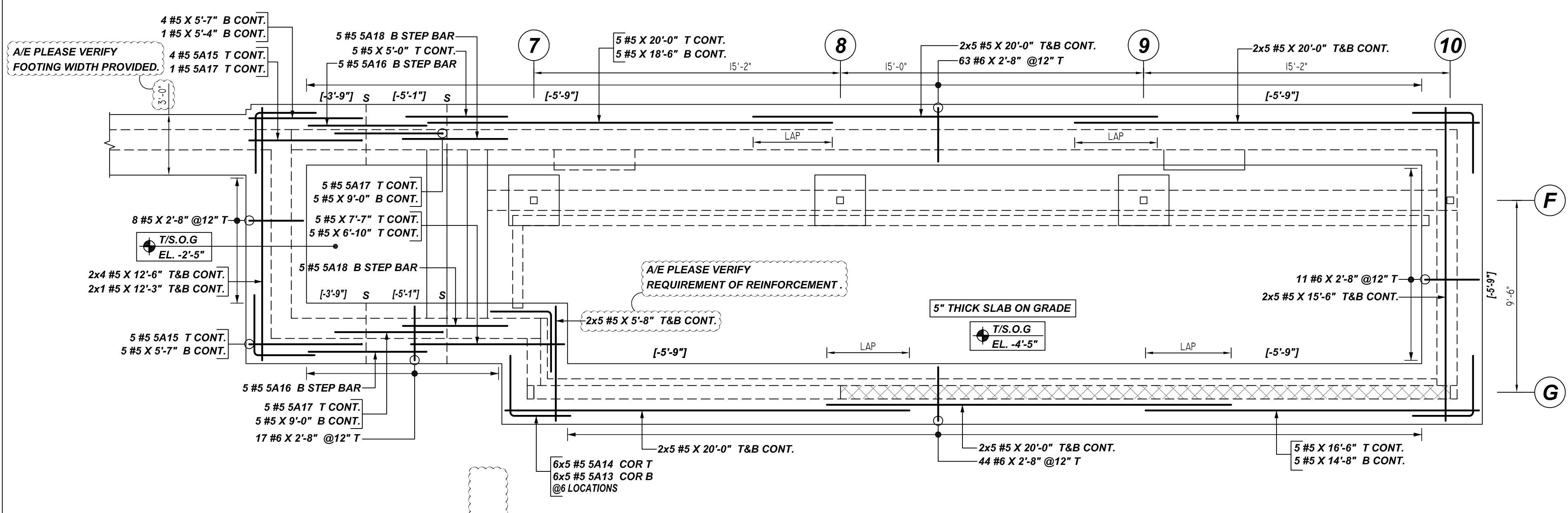
REV NO	DATE	APPROVAL	REV NO	DATE	SENT FOR
0	10.19.22	APPROVAL			
		SENT FOR			

DESIGNER:	DRAWN BY	DATE	JOB NO	SHEET NO.
---	RTE/SS	10.19.22	M92270922P	R03

NOTICE

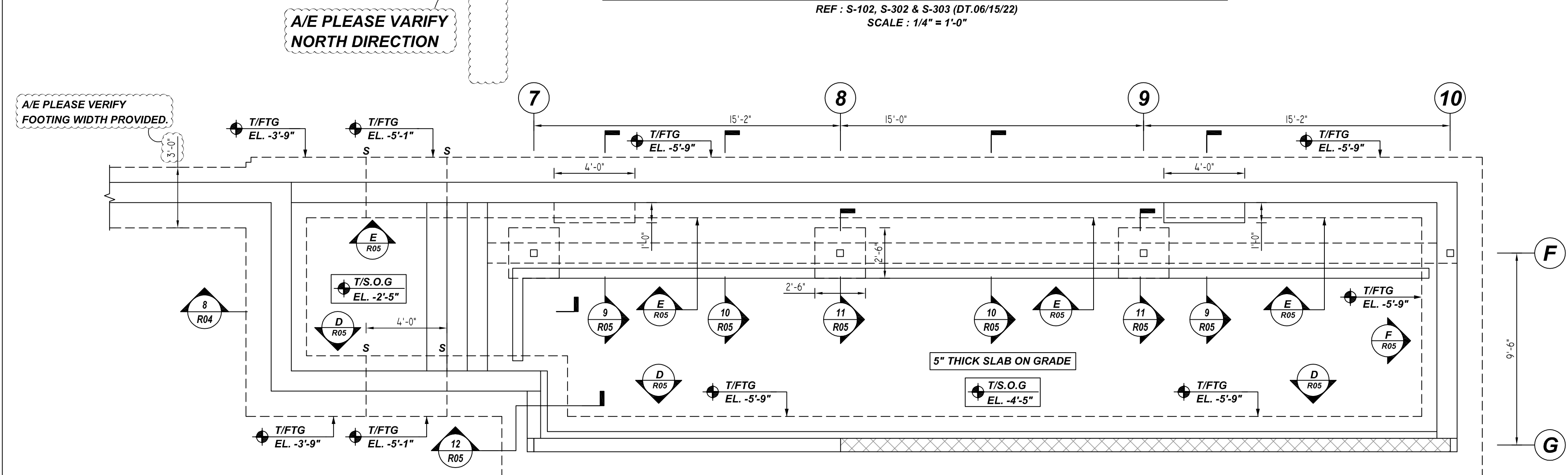
SHORTAGES, IMPROPER FABRICATION OR CLAIMS FOR ANY OTHER REASON MUST BE REPORTED TO THIS COMPANY WITHIN 10 DAYS FROM ORIGINAL DELIVERY. THIS COMPANY ALSO RESERVES THE RIGHT TO FIELD INSPECT MATERIALS PRIOR TO REPLACEMENT OR RECONDITIONING OF MATERIALS AND WILL NOT BE LIABLE FOR CHARGES FROM WORK DONE IN THE FIELD WITHOUT PRIOR AUTHORIZATION FROM THIS COMPANY.

REINFORCING STEEL PLACING DRAWING ONLY. USE IN CONJUNCTION WITH CONTRACT DRAWINGS & SPECIFICATIONS. ELEVATIONS & DIMENSIONS SHOWN ON DRAWING ARE FOR DETAILING PURPOSES ONLY AND SHOULD NOT BE USED FOR CONSTRUCTION UNLESS VERIFIED BY ENGINEER OR CONTRACTOR.



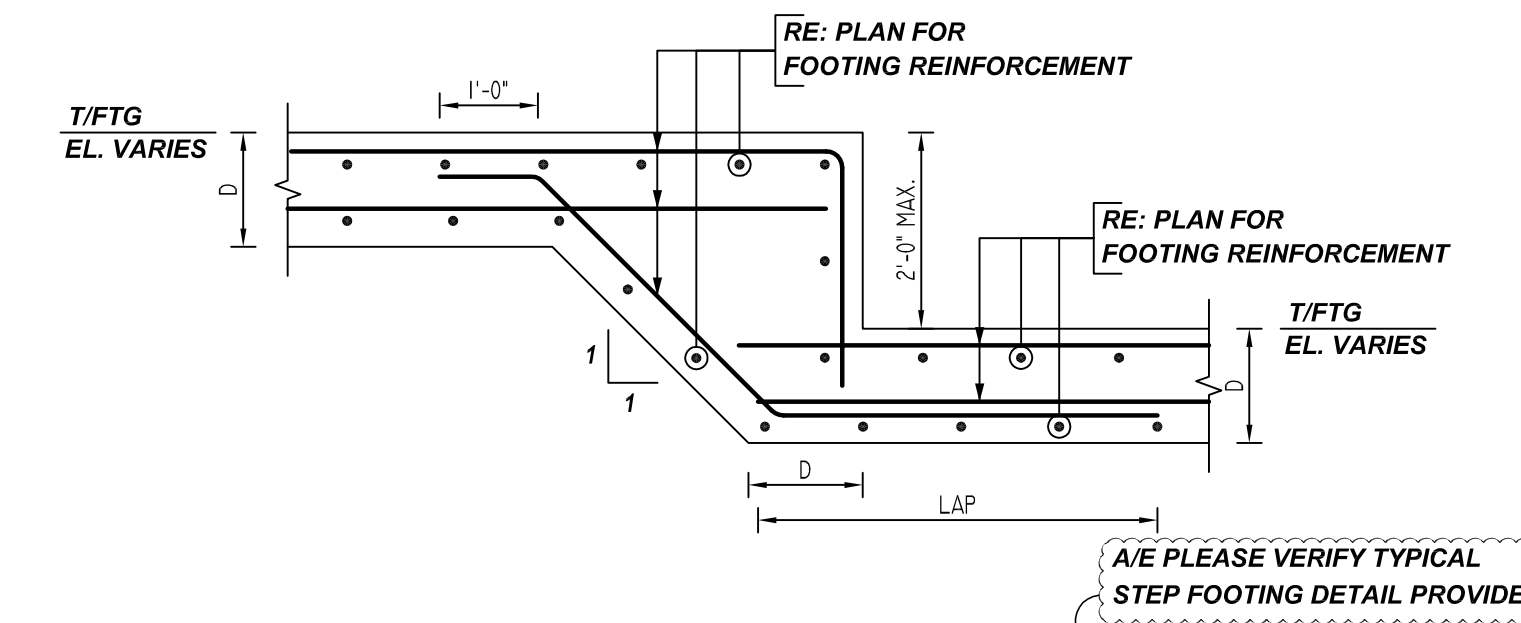
VISITORS DUGOUT - FOUNDATION REINFORCEMENT DETAILS

REF: S-102, S-302 & S-303 (DT.06/15/22)
SCALE: 1/4" = 1'-0"



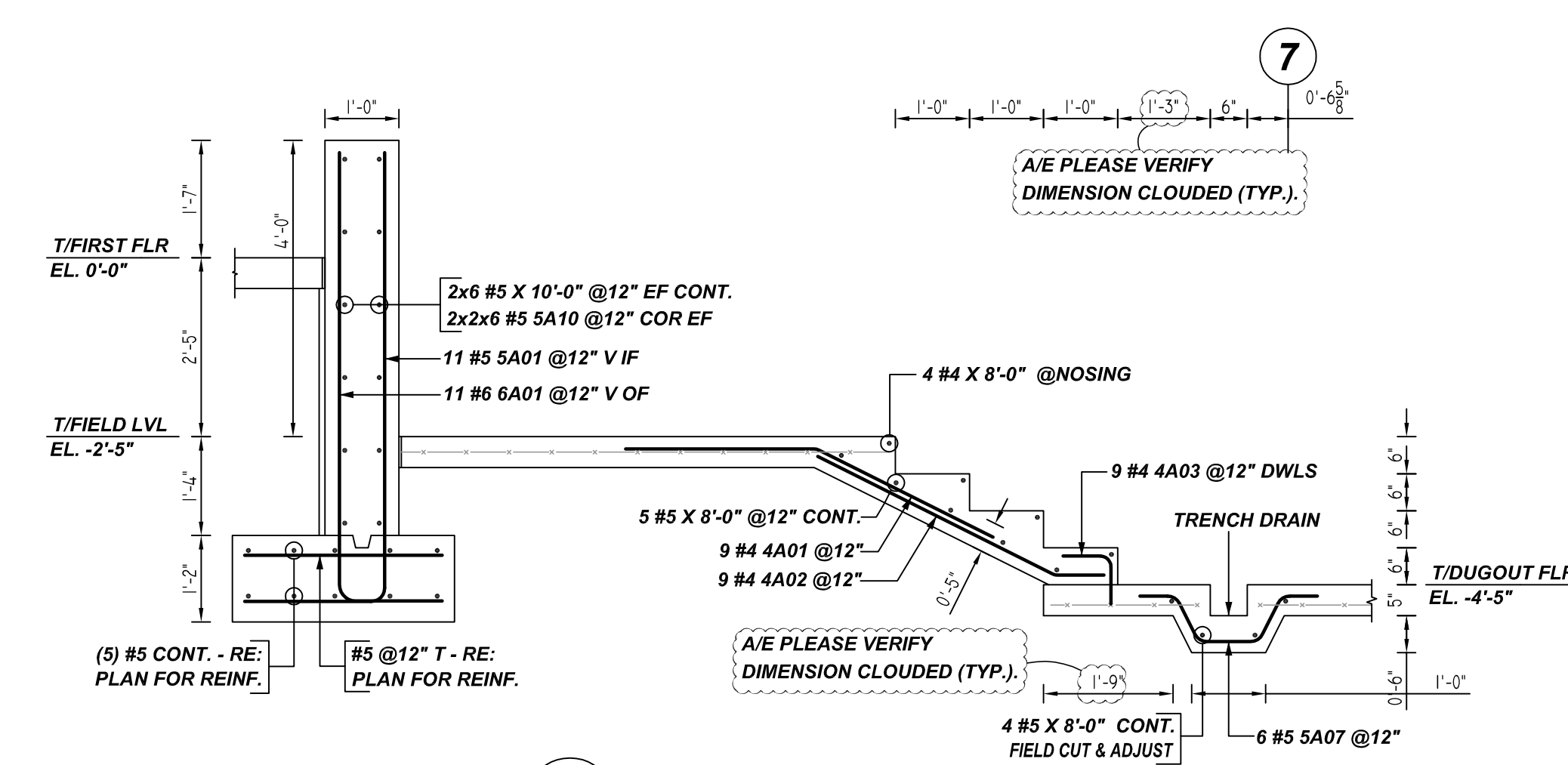
VISITORS DUGOUT - FIELD LEVEL & FOUNDATION KEY PLAN

REF: S-102 (DT.06/15/22)
SCALE: 1/4" = 1'-0"



TYPICAL FOOTING STEP DETAIL

REF: S-101, S-102 & S-103 (DT.06/15/22)
SCALE: 1/2" = 1'-0"



SECTION 8

REF: S-102, S-302 & S-303 (DT.06/15/22)
SCALE: 1/2" = 1'-0"

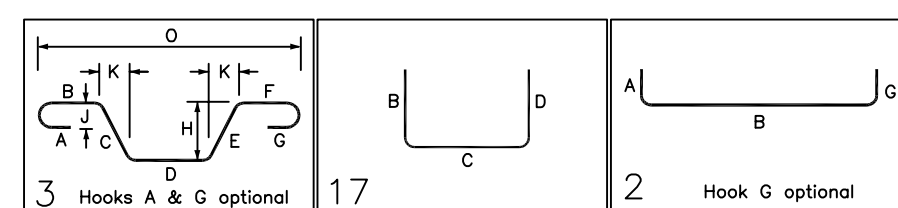
MESH DETAILS					
S. NO	ELEMENT	MESH SIZE	SHEETS	AREA	REMARK
1	5" THK SLAB ON GRADE	6x6 - W2.1XW2.1 WWF	6	745 SQ.FT	8'-0" X 15'-0" SHEET SIZE (18% LAP ADDED)

NOTES

TYPICAL REINFORCING BAR CLEARANCE TABLE	
LOCATION	MIN. COVER
FOOTING BOTTOM	3" CLR
FOOTING TOP & SIDE	2" CLR
WALL OF & IF	2" CLR
WALL END	2" CLR

**ALL BARS IN THIS DRAWING
ASTM A615 GRADE 60
BLACK UNCOATED**

Release Number: R04		BAR LIST															
Bar Mark	Qty	Size	Total Length	Type	X'	Y'	Z'	U'	V'	W'	X'	Y'	Z'	U'	V'	W'	
4A01	9	#4	5'-2 3/4"	3		2'-8"					2'-6 3/4"						
5A01	11	#5	6'-0"	17		6'-1"					1'-11"						
4A03	9	#4	1'-4"	2		0'-8"					0'-8"						
4A02	9	#4	4'-2 3/4"	3		3'-7"					0'-7 3/4"						
5A15	9	#5	6'-5 1/2"	2		0'-10"					5'-7"						
5A17	11	#5	6'-7 1/2"	2		0'-10"					5'-4"						
5A16	10	#5	6'-3 3/4"	3		3'-0"					2'-7 3/4"			1'-0"			
5A18	10	#5	5'-8 3/4"	3		3'-0"					1'-8 3/4"			1'-0"			
5A14	30	#5	7'-10"	17		3'-11"					3'-11"			1'-2 3/4"			
5A13	30	#5	6'-0"	17		3'-0"					3'-0"			1'-2 3/4"			
5A07	6	#5	3'-5"	3		0'-6"					0'-8 3/4"			0'-10"			
5A01	11	#5	7'-5"	17		6'-1"					1'-5"			0'-8"			
5A10	24	#5	6'-8"	17		3'-4"					3'-4"			0'-6"			



LAP SCHEDULE

3000 PSI (CLASS-B) CASE - 1
Per ACI :318 (12.2.2)

BAR#	LENGTHS	
	TOP	OTHERS
#3	2'-4"	1'-10"
#4	3'-1"	2'-5"
#5	3'-11"	3'-0"
#6	4'-8"	3'-7"
#7	6'-9"	5'-3"
#8	7'-9"	6'-0"
#9	8'-9"	6'-9"
#10	9'-10"	7'-7"
#11	10'-11"	8'-5"

ALL TOP BARS ARE DEFINED AS HORIZ BARS WITH MORE THAN 12" OF CONCRETE BELOW BARS.

LAP SCHEDULE

4000 PSI (CLASS-B) CASE - 1
Per ACI :318 (12.2.2)

BAR#	LENGTHS	
	TOP	OTHERS
#3	2'-0"	1'-7"
#4	2'-8"	2'-1"
#5	3'-4"	2'-7"
#6	4'-0"	3'-1"
#7	5'-10"	4'-6"
#8	6'-8"	5'-2"
#9	7'-7"	5'-10"
#10	8'-6"	6'-7"
#11	9'-5"	7'-3"

ALL TOP BARS ARE DEFINED AS HORIZ BARS WITH MORE THAN 12" OF CONCRETE BELOW BARS.

REBAR GRADE 60 ASTM A-615

SPLICES USED		ABBREVIATIONS		BAR MARK SIZE EQUIVALENT	
CLASS B 4,000 psi UNO				Imperial	Soft Metric
TOP BARS	OTHER BARS	ADD.	Additional	#3	#10
#3	#3	B.O.W.	Bottom of wall	#4	#13
#4	#4	C.B.	Corner Bars	#5	#16
#5	#5	DIAG.	Diagonal	#6	#19
#6	#6	D.O.	Door Opening	#7	#22
#7	#7	DWLS.	Dowels	#8	#25
#8	#8	E.F.	Each Face	#9	#29
#9	#9	E.S.	Each Side	#10	#32
#10	#10	E.W.	Each Way	#11	#36
#11	#11	FTG.	Footing		
#14	#14	F.F.	Far Face		
		HORIZ.	Horizontal		
		I.F.	Inside Face		
		INTERS.	Intersection		
		L.W.	long Way		
		N.F.	Near Face		
		O.F.	Outside Face		
		S.W.	Short Way		
		T&B	Top & Bottom		
		T.O.W.	Top of Wall		
		Trans.	Transverse		
		VERT.	Vertical		

CAPITAL ONE EAST BASEBALL FIELD

VISITORS DUGOUT - FOUNDATION REINFORCEMENT DETAILS
PROVIDENCE DISTRICT - FAIRFAX COUNTY VIRGINIA
CUSTOMER: BAY COUNTRY PROFESSIONAL CONCRETE

DESIGNER: ---

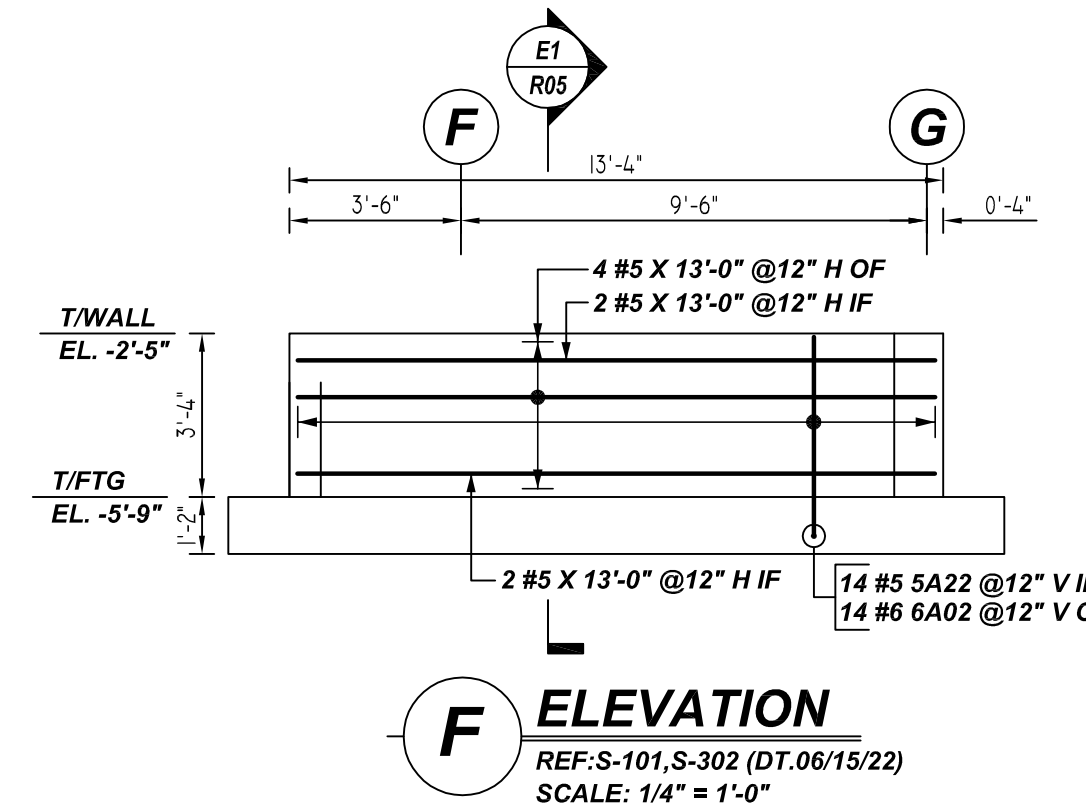
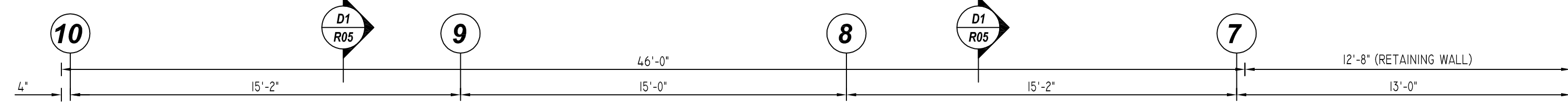
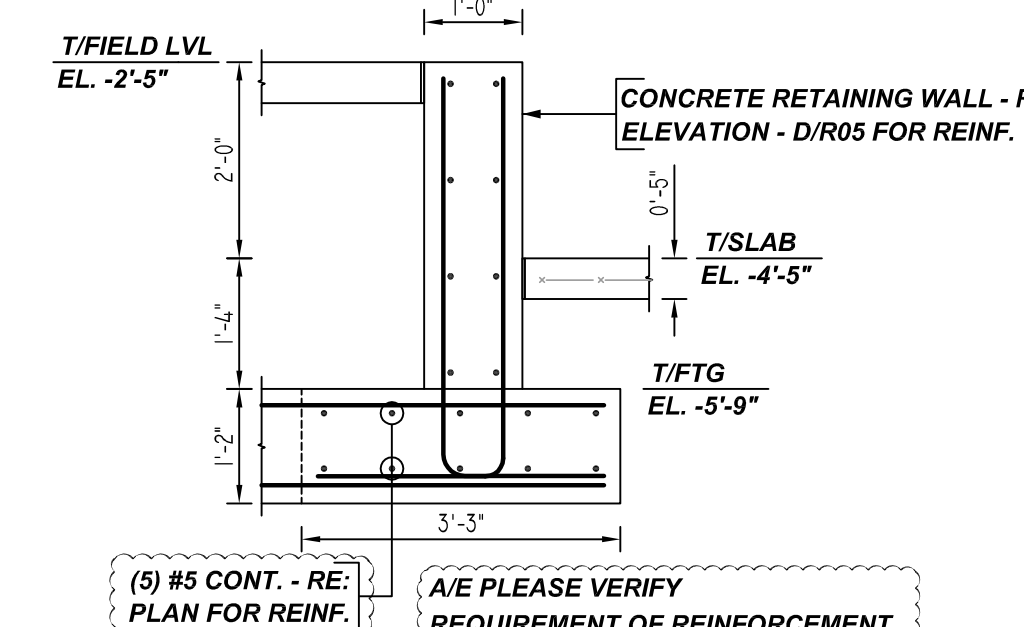
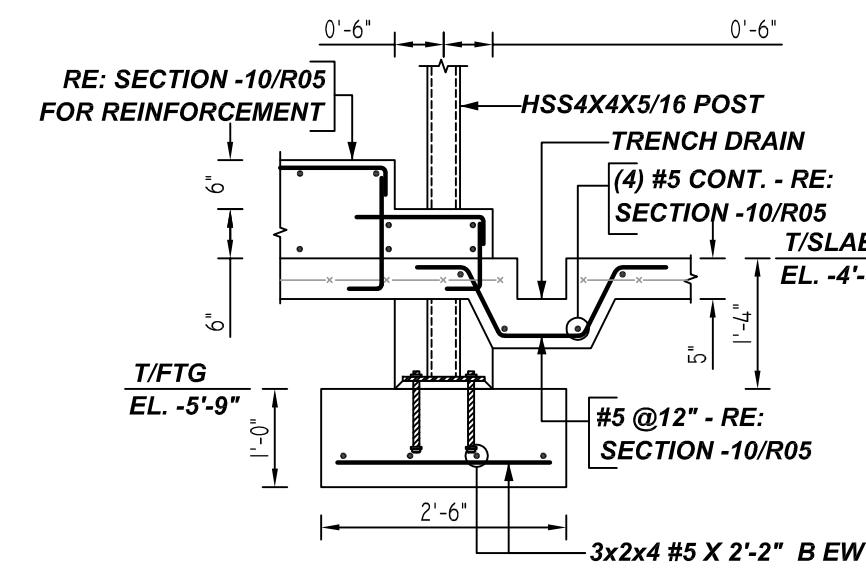
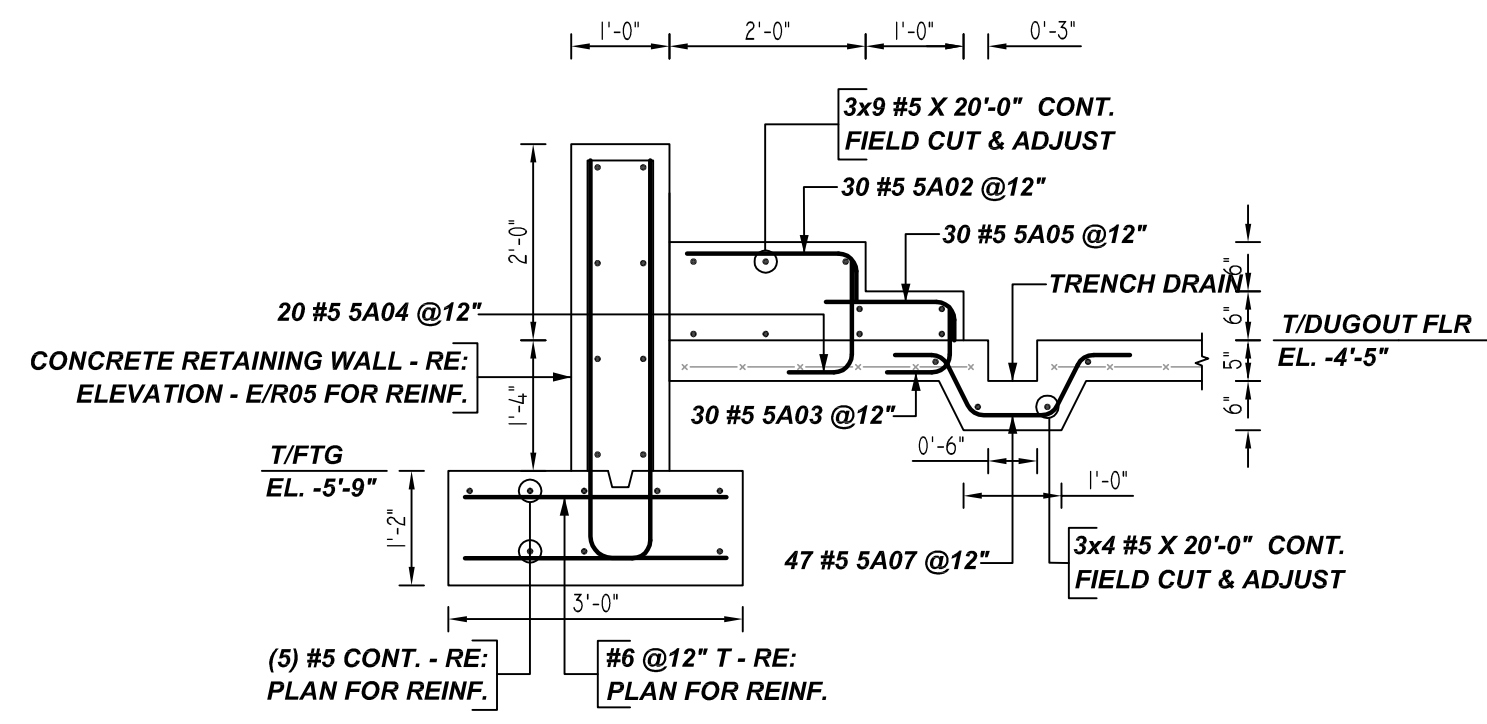
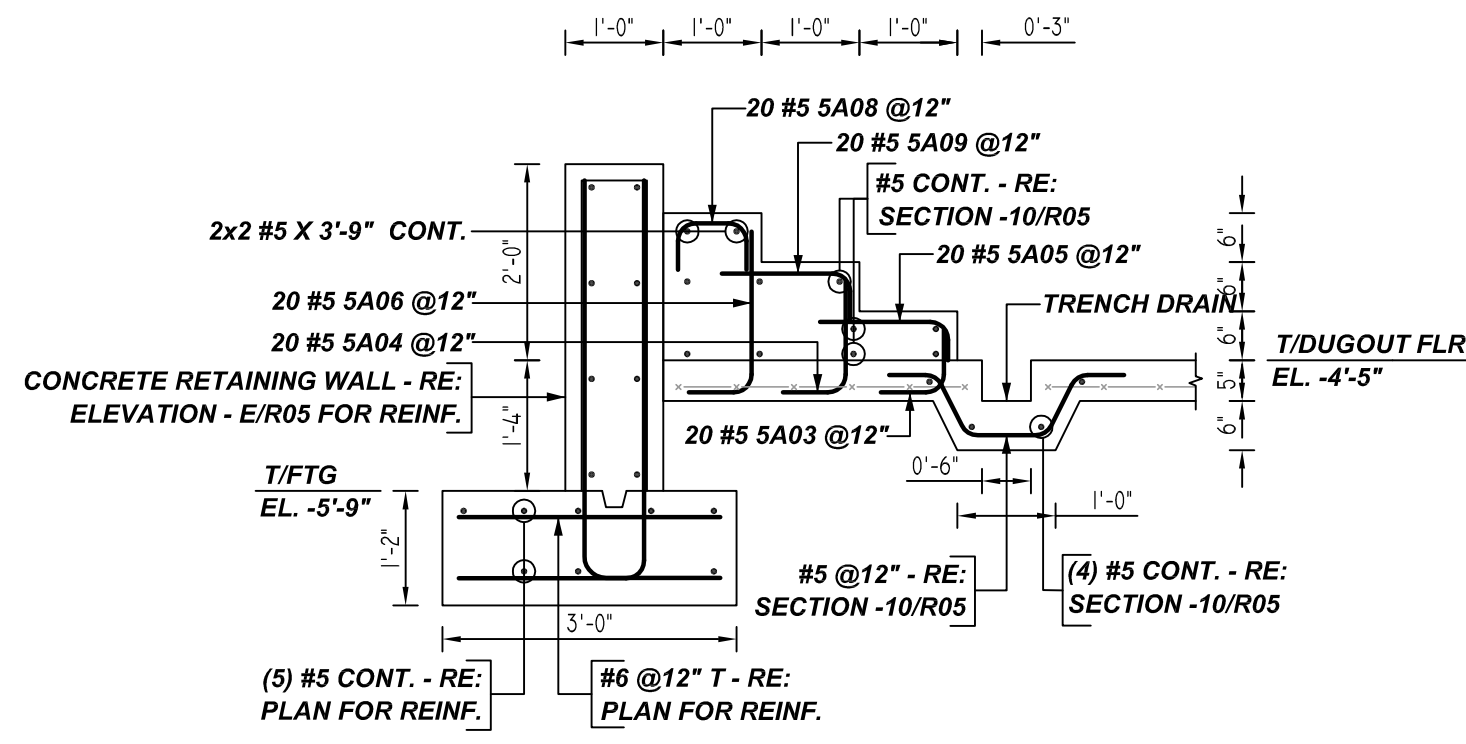
REV NO	DATE	APPROVAL	REV NO	DATE	SENT FOR
0	10.19.22				

DRAWN BY	DATE	JOB NO	SHEET NO.
RTE/SS	10.19.22	M92270922P	R04

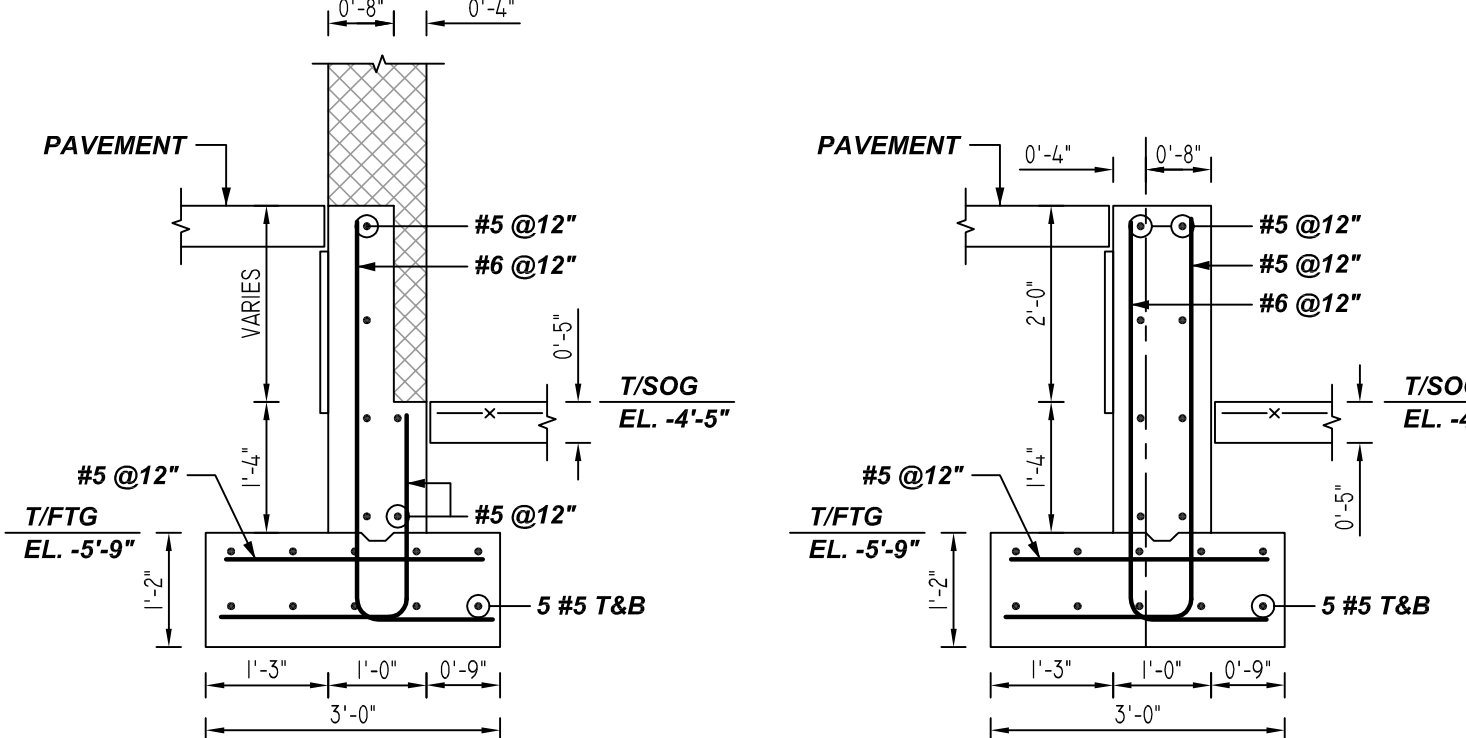
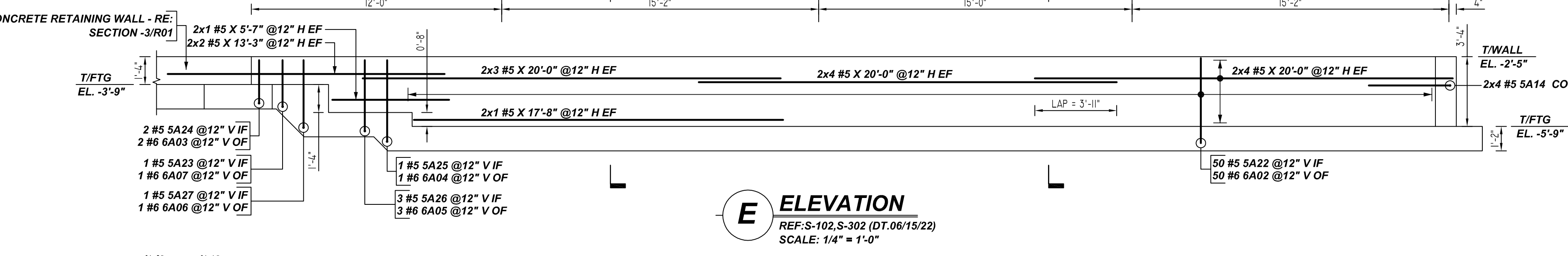
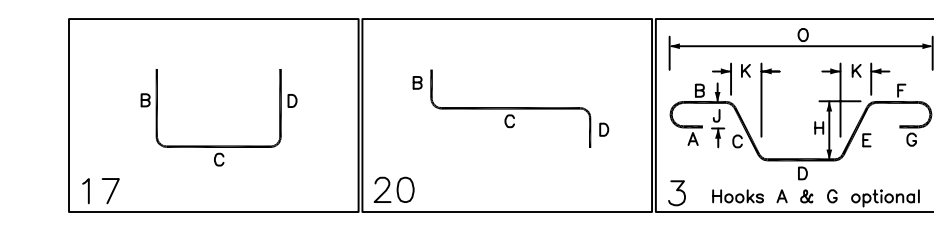
NOTICE

SHORTAGES, IMPROPER FABRICATION OR CLAIMS FOR ANY OTHER REASON MUST BE REPORTED TO THIS COMPANY WITHIN 10 DAYS FROM ORIGINAL DELIVERY. THIS COMPANY ALSO RESERVES THE RIGHT TO FIELD INSPECT MATERIALS PRIOR TO REPLACEMENT OR RECONDITIONING OF MATERIALS AND WILL NOT BE LIABLE FOR CHARGES FROM WORK DONE IN THE FIELD WITHOUT PRIOR AUTHORIZATION FROM THIS COMPANY.

REINFORCING STEEL PLACING DRAWING ONLY. USE IN CONJUNCTION WITH CONTRACT DRAWINGS & SPECIFICATIONS. ELEVATIONS & DIMENSIONS SHOWN ON DRAWING ARE FOR DETAILING PURPOSES ONLY AND SHOULD NOT BE USED FOR CONSTRUCTION UNLESS VERIFIED BY ENGINEER OR CONTRACTOR.



Bar Mark	Qty	Size	Total Length	Type	X	Y	Z	W	V	U	T	S	R	Q	P	O	N	M	L	K	J	I	H	G	F	E	D	C	B	A
SA05	50	#5	1'-9"	17																										
SA02	30	#5	2'-3"	17																										
SA01	3	#5	8'-0"	17																										
SA32	1	#5	8'-2"	17																										
SA31	1	#5	9'-2"	17																										
SA30	3	#5	9'-4"	17																										
SA29	1	#5	8'-10"	17																										
SA28	5	#5	10'-0"	17																										
SA27	1	#5	5'-2"	17																										
SA26	3	#5	5'-4"	17																										
SA33	7	#5	10'-10"	20																										
SA04	40	#5	1'-10"	17																										
SA03	50	#5	1'-4"	17																										
SA25	1	#5	5'-10"	17																										
SA28	20	#5	7'-3"	17																										
SA14	13	#5	7'-10"	17																										
SA06	20	#5	2'-4"	17																										
SA07	47	#5	3'-3"	3																										
SA09	20	#5	1'-10"	17																										
BA16	5	#6	9'-5"	17																										
BA15	6	#6	6'-5"	17																										
BA14	8	#6	6'-2"	17																										
BA02	83	#6	5'-5"	17																										
BA13	8	#6	5'-2"	17																										
BA12	8	#6	4'-8"	17																										
BA01	3	#6	7'-8"	17																										
BA09	3	#6	8'-10"	17																										
SA24	51	#5	4'-0"	17																										
BA11	1	#6	7'-5"	17																										
BA10	1	#6	8'-5"	17																										
BA08	1	#6	3'-4"	17																										
SA22	64	#5	6'-0"	17																										
BA07	1	#6	3'-8"	17																										
SA23	1	#5	4'-2"	17																										
BA06	1	#6	4'-8"	17																										
BA05	3	#6	4'-10"	17																										
BA04	1	#6	5'-4"	17																										
BA03	2	#6	3'-6"	17																										



NOTES

TYPICAL REINFORCING BAR CLEARANCE TABLE

LOCATION	MIN. COVER
FOOTING BOTTOM	3" CLR
FOOTING TOP & SIDE	2" CLR
WALL OF & IF	2" CLR
WALL END	2" CLR

**ALL BARS IN THIS DRAWING
ASTM A615 GRADE 60
BLACK UNCOATED**

LAP SCHEDULE
3000 PSI (CLASS-B) CASE - 1
Per ACI :318 (12.2.2)

BAR#	LENGTHS	
	TOP	OTHERS
#3	2'-4"	1'-10"
#4	3'-1"	2'-5"
#5	3'-11"	3'-0"
#6	4'-8"	3'-7"
#7	6'-9"	5'-3"
#8	7'-9"	6'-0"
#9	8'-9"	6'-9"
#10	9'-10"	7'-7"
#11	10'-11"	8'-5"

ALL TOP BARS ARE DEFINED AS HORIZ BARS WITH MORE THAN 12" OF CONCRETE BELOW BARS.

LAP SCHEDULE
4000 PSI (CLASS-B) CASE - 1
Per ACI :318 (12.2.2)

BAR#	LENGTHS	
	TOP	OTHERS
#3	2'-0"	1'-7"
#4	2'-8"	2'-1"
#5	3'-4"	2'-7"
#6	4'-0"	3'-1"
#7	5'-10"	4'-6"
#8	6'-8"	5'-2"
#9	7'-7"	5'-10"
#10	8'-6"	6'-7"
#11	9'-5"	7'-3"

ALL TOP BARS ARE DEFINED AS HORIZ BARS WITH MORE THAN 12" OF CONCRETE BELOW BARS.

REBAR GRADE 60 ASTM A-615

SPLICES USED

CLASS B 4,000 psi UNO

TOP BARS	OTHER BARS
#3	#3
#4	#4
#5	#5
#6	#6
#7	#7
#8	#8
#9	#9
#10	#10
#11	#11
#14	#14

ABBREVIATIONS

- ADD. = Additional
- B.O.W. = Bottom of wall
- C.B. = Corner Bars
- DIAG. = Diagonal
- D.O. = Door Opening
- D.W.L.S. = Dowels
- E.F. = Each Face
- E.S. = Each Side
- E.W. = Each Way
- FTG. = Footing
- F.F. = Far Face
- HORIZ. = Horizontal
- I.F. = Inside Face
- INTERS. = Intersection
- L.W. = Long Way
- N.F. = Near Face
- O.F. = Outside Face
- S.W. = Short Way
- T&B = Top & Bottom
- T.O.W. = Top of Wall
- Trans. = Transverse
- VERT. = Vertical

BAR MARK SIZE EQUIVALENT

Imperial	Soft Metric
#3	#10
#4	#13
#5	#16
#6	#19
#7	#22
#8	#25
#9	#29
#10	#32
#11	#36

CAPITAL ONE EAST BASEBALL FIELD
VISITORS DUGOUT - FOUNDATION REINFORCEMENT DETAILS
PROVIDENCE DISTRICT - FAIRFAX COUNTY VIRGINIA
CUSTOMER: BAY COUNTRY PROFESSIONAL CONCRETE
DESIGNER: ---

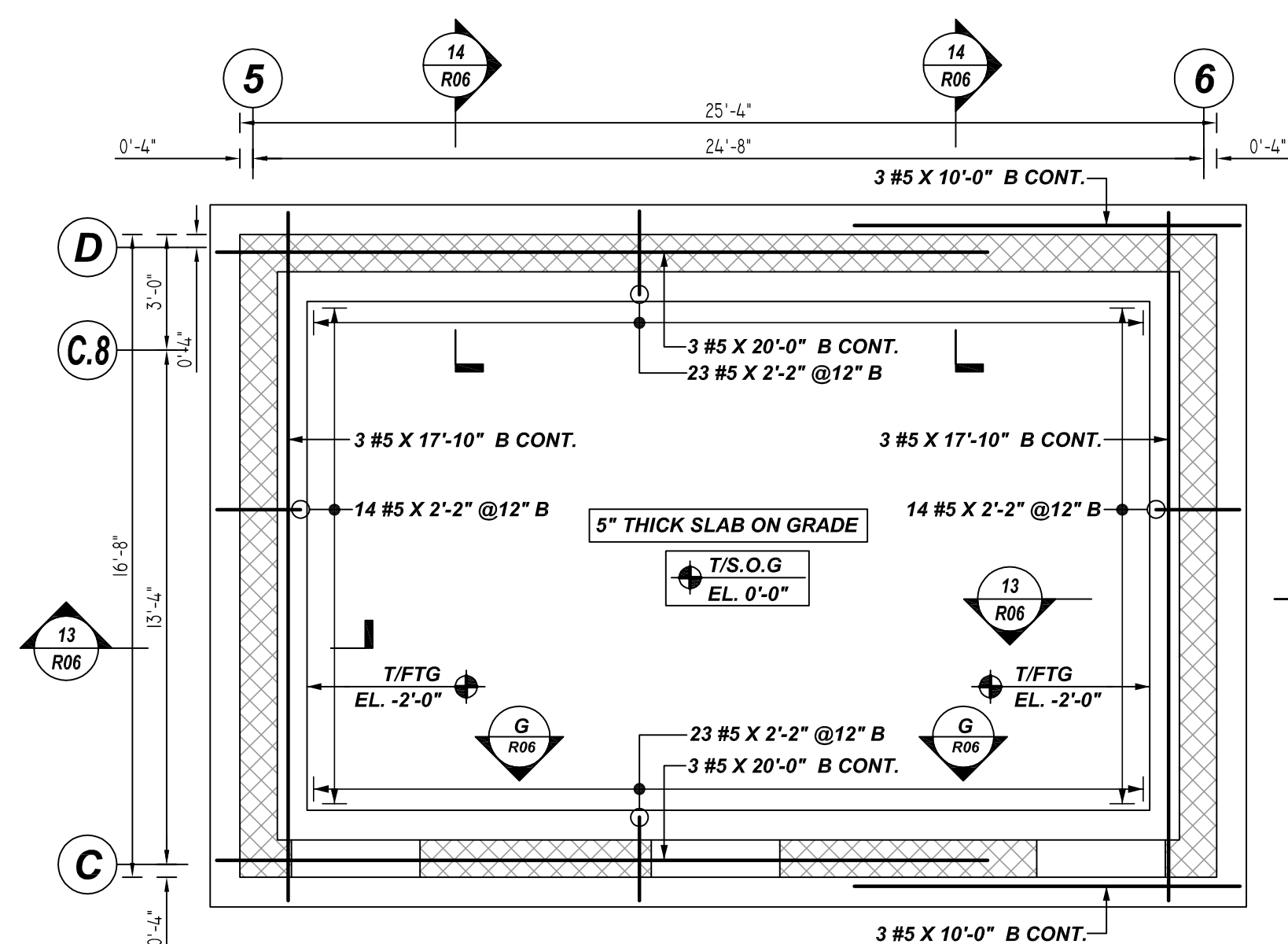
REV NO	DATE	APPROVAL	REV NO	DATE	SENT FOR
0	10.19.22				

DRAWN BY: RTE/SS DATE: 10.19.22 JOB NO: M92270922P SHEET NO: R05

NOTICE

SHORTAGES, IMPROPER FABRICATION OR CLAIMS FOR ANY OTHER REASON MUST BE REPORTED TO THIS COMPANY WITHIN 10 DAYS FROM ORIGINAL DELIVERY. THIS COMPANY ALSO RESERVES THE RIGHT TO FIELD INSPECT MATERIALS PRIOR TO REPLACEMENT OR RECONDITIONING OF MATERIALS AND WILL NOT BE LIABLE FOR CHARGES FROM WORK DONE IN THE FIELD WITHOUT PRIOR AUTHORIZATION FROM THIS COMPANY.

REINFORCING STEEL PLACING DRAWING ONLY. USE IN CONJUNCTION WITH CONTRACT DRAWINGS & SPECIFICATIONS. ELEVATIONS & DIMENSIONS SHOWN ON DRAWING ARE FOR DETAILING PURPOSES ONLY AND SHOULD NOT BE USED FOR CONSTRUCTION UNLESS VERIFIED BY ENGINEER OR CONTRACTOR.

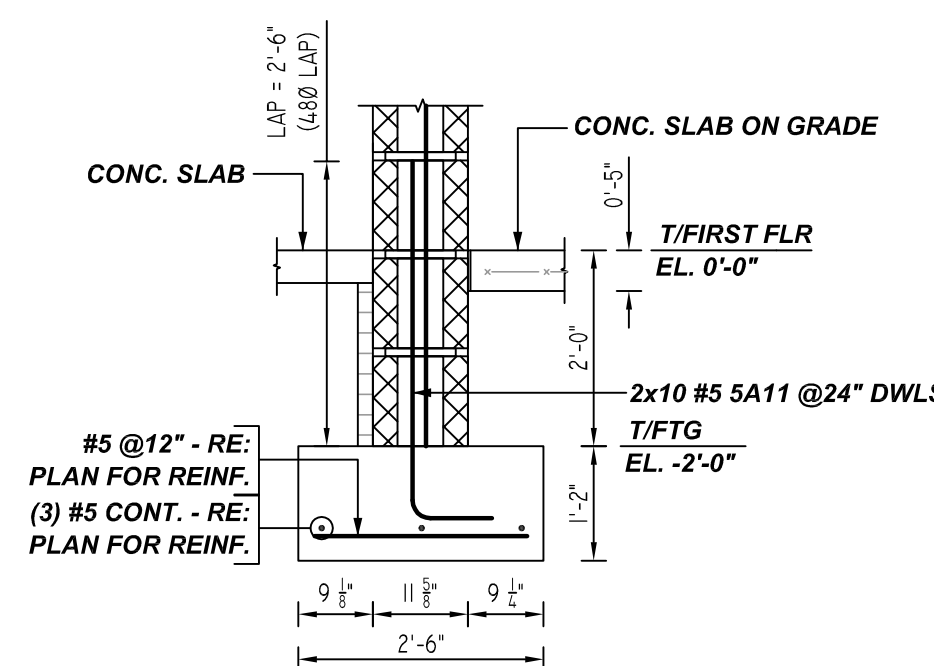


PRESSBOX - FOUNDATION REINFORCEMENT DETAILS

REF: S-103 & S-301 (DT.06/15/22)
SCALE: 1/4" = 1'-0"

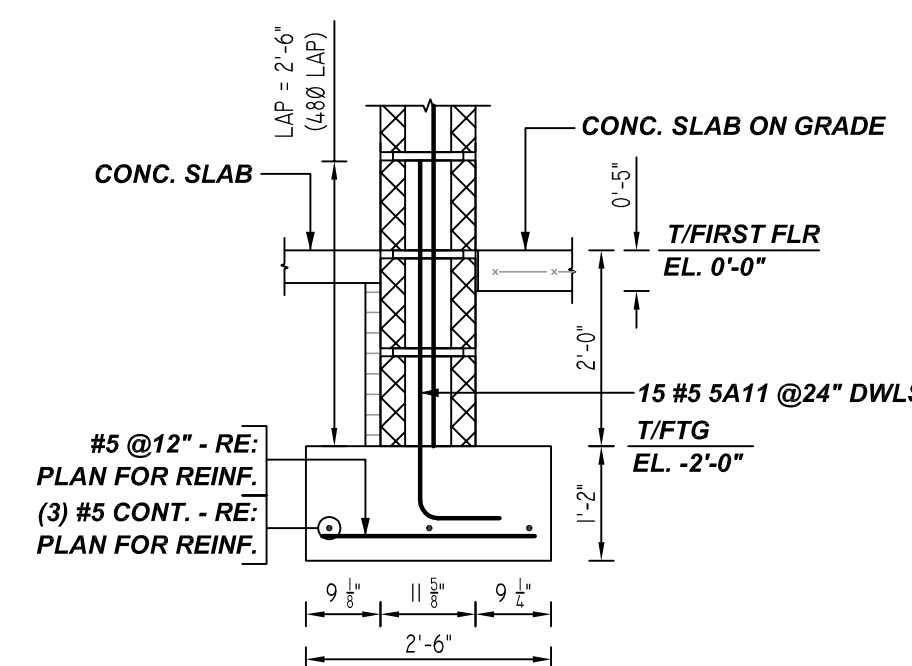
A/E PLEASE VERIFY NORTH DIRECTION

MESH DETAILS					
S. NO	ELEMENT	MESH SIZE	SHEETS	AREA	REMARK
1	5" THK SLAB ON GRADE	6x6 - W2.1XW2.1 WWF	4	423 SQ.FT	8'-0" X 15'-0" SHEET SIZE (18% LAP ADDED)



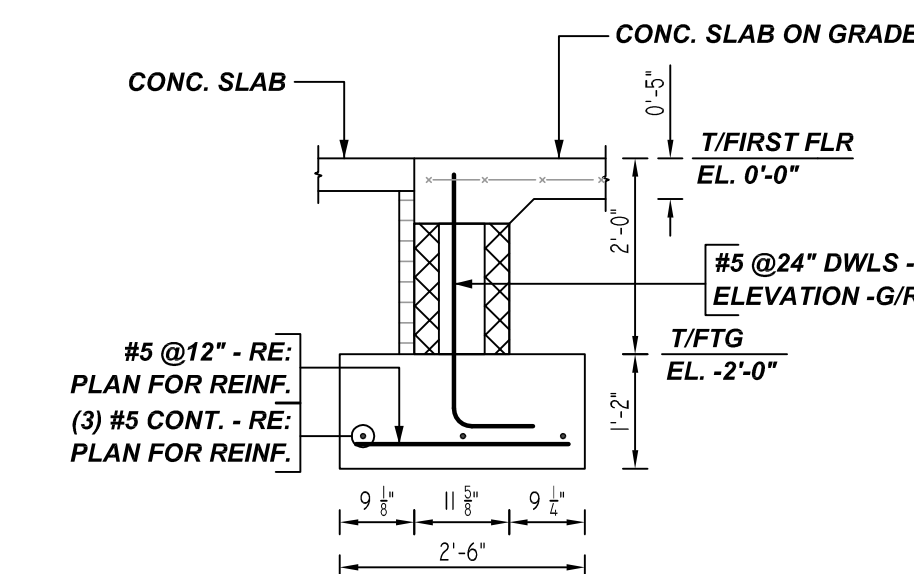
13 SECTION

REF: S-103 & S-301 (DT.06/15/22)
SCALE: 1/2" = 1'-0"
(@2 LOCATIONS)



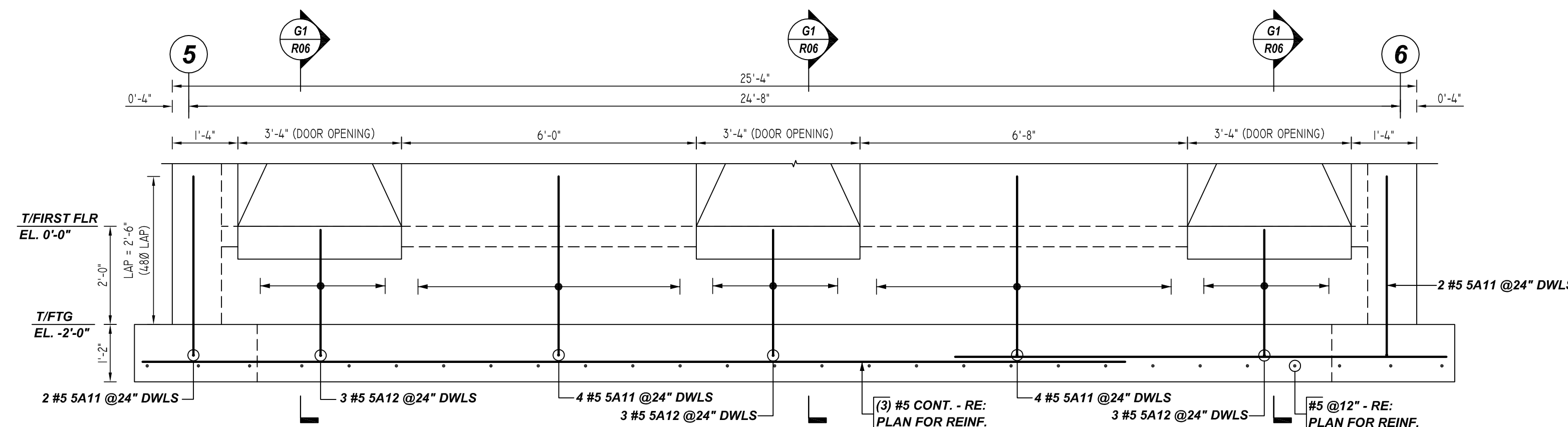
14 SECTION

REF: S-103 & S-301 (DT.06/15/22)
SCALE: 1/2" = 1'-0"



G1 SECTION

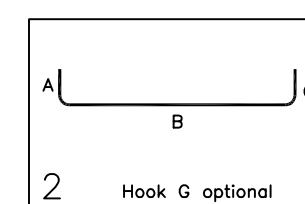
REF: S-103 & S-301 (DT.06/15/22)
SCALE: 1/2" = 1'-0"



G ELEVATION

REF: S-103 & S-301 (DT.06/15/22)
SCALE: 1/2" = 1'-0"

Bar Mark	Qty	Size	Total Length	Type	X	Y	Z	BWR LIST
5A11	47	#5	4'-6"	2	0'-10"	3'-8"		
5A12	8	#5	3'-5"	2	0'-10"	2'-7"		



NOTES

TYPICAL REINFORCING BAR CLEARANCE TABLE	
LOCATION	MIN. COVER
FOOTING BOTTOM	3" CLR
FOOTING TOP & SIDE	2" CLR
WALL OF & IF	2" CLR
WALL END	2" CLR

**ALL BARS IN THIS DRAWING
ASTM A615 GRADE 60
BLACK UNCOATED**

A/E PLEASE VERIFY LAP SCHEDULE PROVIDED FOR FOOTING.

LAP SCHEDULE

3000 PSI (CLASS-B) CASE - 1
Per ACI :318 (12.2.2)

BAR#	LENGTHS	
	TOP	OTHERS
#3	2'-4"	1'-10"
#4	3'-1"	2'-5"
#5	3'-11"	3'-0"
#6	4'-8"	3'-7"
#7	6'-9"	5'-3"
#8	7'-9"	6'-0"
#9	8'-9"	6'-9"
#10	9'-10"	7'-7"
#11	10'-11"	8'-5"

ALL TOP BARS ARE DEFINED AS HORIZ BARS WITH MORE THAN 12" OF CONCRETE BELOW BARS.

LAP SCHEDULE

4000 PSI (CLASS-B) CASE - 1
Per ACI :318 (12.2.2)

BAR#	LENGTHS	
	TOP	OTHERS
#3	2'-0"	1'-7"
#4	2'-8"	2'-1"
#5	3'-4"	2'-7"
#6	4'-0"	3'-1"
#7	5'-10"	4'-6"
#8	6'-8"	5'-2"
#9	7'-7"	5'-10"
#10	8'-6"	6'-7"
#11	9'-5"	7'-3"

ALL TOP BARS ARE DEFINED AS HORIZ BARS WITH MORE THAN 12" OF CONCRETE BELOW BARS.

REBAR GRADE 60 ASTM A-615

SPLICES USED		ABBREVIATIONS		BAR MARK SIZE EQUIVALENT	
CLASS B 4,000 psi UNO	OTHER BARS			Imperial	Soft Metric
#3	#3	ADD.	Additional	#3	#10
#4	#4	B.O.W.	Bottom of wall	#4	#13
#5	#5	C.B.	Corner Bars	#5	#16
#6	#6	DIAG.	Diagonal	#6	#19
#7	#7	D.O.	Door Opening	#7	#22
#8	#8	DWLS.	Dowels	#8	#25
#9	#9	E.F.	Each Face	#9	#29
#10	#10	E.S.	Each Side	#10	#32
#11	#11	E.W.	Each Way	#11	#36
		FTG.	Footing		
		F.F.	Far Face		
		HORIZ.	Horizontal		
		I.F.	Inside Face		
		INTERS.	Intersection		
		L.W.	long Way		
		N.F.	Near Face		
		O.F.	Outside Face		
		S.W.	Short Way		
		T&B	Top & Bottom		
		T.O.W.	Top of Wall		
		Trans.	Transverse		
		VERT.	Vertical		

CAPITAL ONE EAST BASEBALL FIELD
PRESSBOX - FOUNDATION & WALL REINFORCEMENT DETAILS
PROVIDENCE DISTRICT - FAIRFAX COUNTY VIRGINIA
CUSTOMER: BAY COUNTRY PROFESSIONAL CONCRETE
DESIGNER: ---

REV NO	DATE	APPROVAL	REV NO	DATE	SENT FOR
0	10.19.22				

DRAWN BY	DATE	JOB NO	SHEET NO.
RTE/SS	10.19.22	M92270922P	R06