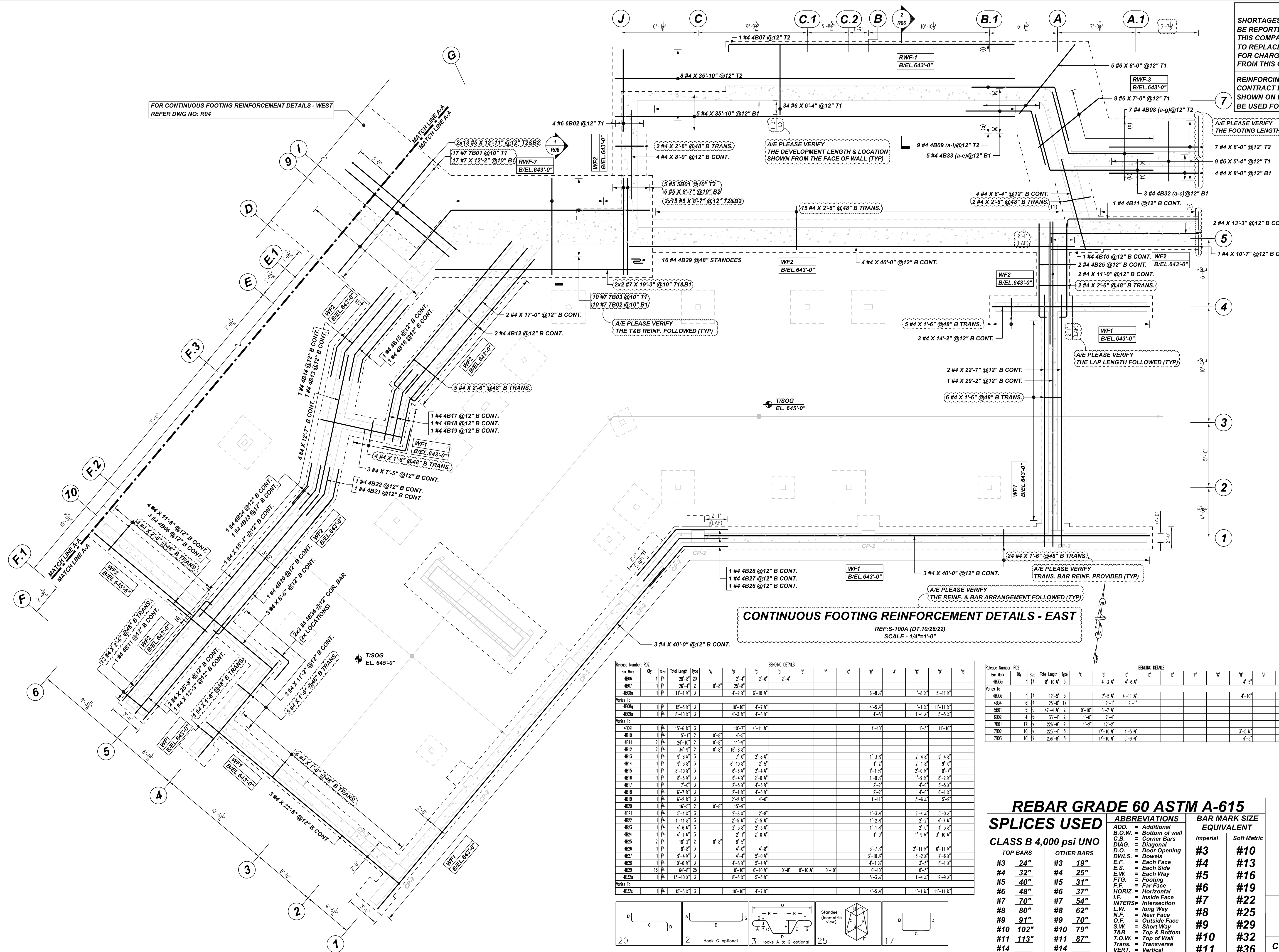


NOTICE

SHORTAGES, IMPROPER FABRICATION OR CLAIMS FOR ANY OTHER REASON MUST BE REPORTED TO THIS COMPANY WITHIN 10 DAYS FROM ORIGINAL DELIVERY. THIS COMPANY ALSO RESERVES THE RIGHT TO FIELD INSPECT MATERIALS PRIOR TO REPLACEMENT OR RECONDITIONING OF MATERIALS AND WILL NOT BE LIABLE FOR CHARGES FROM WORK DONE IN THE FIELD WITHOUT PRIOR AUTHORIZATION FROM THIS COMPANY.

REINFORCING STEEL PLACING DRAWING ONLY. USE IN CONJUNCTION WITH CONTRACT DRAWINGS & SPECIFICATIONS. ELEVATIONS & DIMENSIONS SHOWN ON DRAWING ARE FOR DETAILING PURPOSES ONLY AND SHOULD NOT BE USED FOR CONSTRUCTION UNLESS VERIFIED BY ENGINEER OR CONTRACTOR.

FOR CONTINUOUS FOOTING REINFORCEMENT DETAILS - WEST REFER DWG NO: R04



LAP SCHEDULE
4000 PSI (CLASS-B) CASE - 1
Per ACI 318 (12.2.2)

BAR#	LENGTHS	
	TOP	OTHERS
#3	2'-0"	1'-7"
#4	2'-8"	2'-1"
#5	3'-4"	2'-7"
#6	4'-0"	3'-1"
#7	5'-10"	4'-6"
#8	6'-8"	5'-2"
#9	7'-7"	5'-10"
#10	8'-6"	6'-7"
#11	9'-5"	7'-3"

ALL TOP BARS ARE DEFINED AS HORIZ BARS WITH MORE THAN 12" OF CONCRETE BELOW BARS.

TYPICAL REINFORCING BAR CLEARANCE TABLE

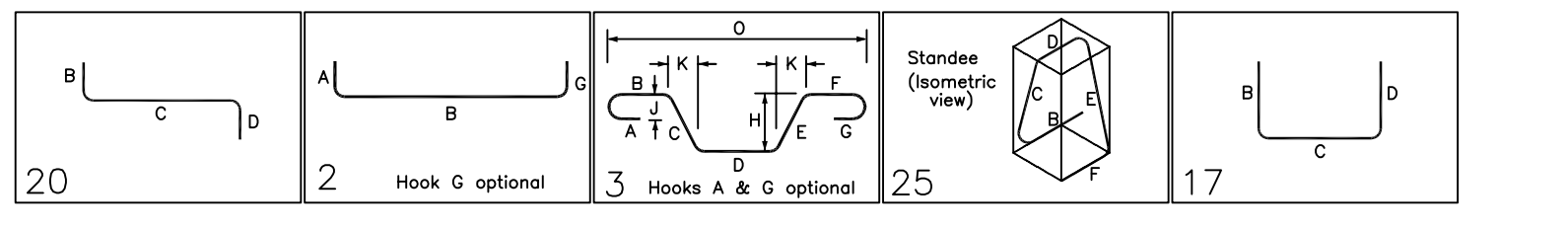
LOCATION	MIN. COVER
FOOTING BOTTOM & SIDE	3" CLR
FOOTING TOP	2" CLR
PIER ALL SIDES	2" CLR

CONTINUOUS FOOTING REINFORCEMENT DETAILS - EAST

REF: S-100A (DT. 10/26/22)
SCALE - 1/4"=1'-0"

Release Number: R02

Bar Mark	Qty	Size	Total Length	Type	BENDING DETAILS																		
					X	Y	Z	T	U	V	W	X	Y	Z	T	U	V	W					
4B06	4	#4	28'-8"	20	0'-8"	2'-4"	2'-6"	2'-4"															
4B07	1	#4	28'-4"	2	0'-8"	25'-8"																	
4B08a	1	#4	11'-1"	3		4'-2"	6'-10"																
4B09	1	#4	15'-5"	3		10'-10"	4'-7"	4'-5"															
4B09a	1	#4	8'-10"	3		4'-3"	4'-8"																
4B09b	1	#4	15'-5"	3		10'-7"	4'-11"																
4B10	1	#4	5'-7"	2		0'-8"	4'-5"																
4B11	2	#4	24'-10"	2		0'-8"	11'-9"																
4B12	2	#4	34'-5"	2		0'-8"	18'-8"																
4B13	1	#4	9'-8"	3		2'-0"	2'-9"																
4B14	1	#4	9'-3"	3		6'-10"	2'-5"																
4B15	1	#4	8'-10"	3		6'-6"	2'-4"																
4B16	1	#4	8'-5"	3		6'-4"	2'-0"																
4B17	1	#4	7'-0"	3		2'-5"	4'-6"																
4B18	1	#4	6'-7"	3		2'-1"	4'-6"																
4B19	1	#4	6'-2"	3		2'-2"	4'-0"																
4B20	1	#4	16'-5"	2		0'-8"	15'-9"																
4B21	1	#4	5'-4"	3		2'-8"	2'-8"																
4B22	1	#4	4'-11"	3		2'-5"	2'-5"																
4B23	1	#4	4'-6"	3		2'-3"	2'-3"																
4B24	1	#4	4'-1"	3		2'-1"	2'-0"																
4B25	2	#4	18'-7"	2		0'-8"	8'-5"																
4B26	1	#4	8'-5"	3		4'-0"	4'-0"																
4B27	1	#4	9'-4"	3		4'-4"	5'-2"																
4B28	1	#4	10'-0"	3		4'-8"	5'-4"																
4B29	18	#4	64'-8"	25		0'-10"	0'-10"	0'-8"	0'-10"	0'-10"													
4B30a	1	#4	13'-10"	3		8'-5"	5'-5"																
4B30b	1	#4	13'-10"	3		10'-10"	4'-7"																



REBAR GRADE 60 ASTM A-615

SPLICES USED

CLASS B 4,000 psi UNO

TOP BARS	OTHER BARS
#3 24"	#3 19"
#4 32"	#4 25"
#5 40"	#5 31"
#6 48"	#6 37"
#7 70"	#7 54"
#8 80"	#8 62"
#9 91"	#9 70"
#10 102"	#10 79"
#11 113"	#11 87"
#14	#14

ABBREVIATIONS
ADD. = Additional
B.O.W. = Bottom of wall
C.B. = Corner Bars
DIAG. = Diagonal
D.O. = Door Opening
DWLS. = Dowels
E.F. = Each Face
E.S. = Each Side
E.W. = Each Way
FTG. = Footing
F.F. = Far Face
HORIZ. = Horizontal
I.F. = Inside Face
INTERS. = Intersection
L.W. = Long Way
N.F. = Near Face
O.F. = Outside Face
S.W. = Short Way
T&B = Top & Bottom
T.O.W. = Top of Wall
Trans. = Transverse
VERT. = Vertical

BAR MARK SIZE EQUIVALENT

Imperial	Soft Metric
#3	#10
#4	#13
#5	#16
#6	#19
#7	#22
#8	#25
#9	#29
#10	#32
#11	#36

PINE PLAINS HOUSE
CONTINUOUS FOOTING REINFORCEMENT DETAILS - EAST
PINE PLAINS, NY 12567

CUSTOMER: UCE BUILDERS

DESIGNER: -

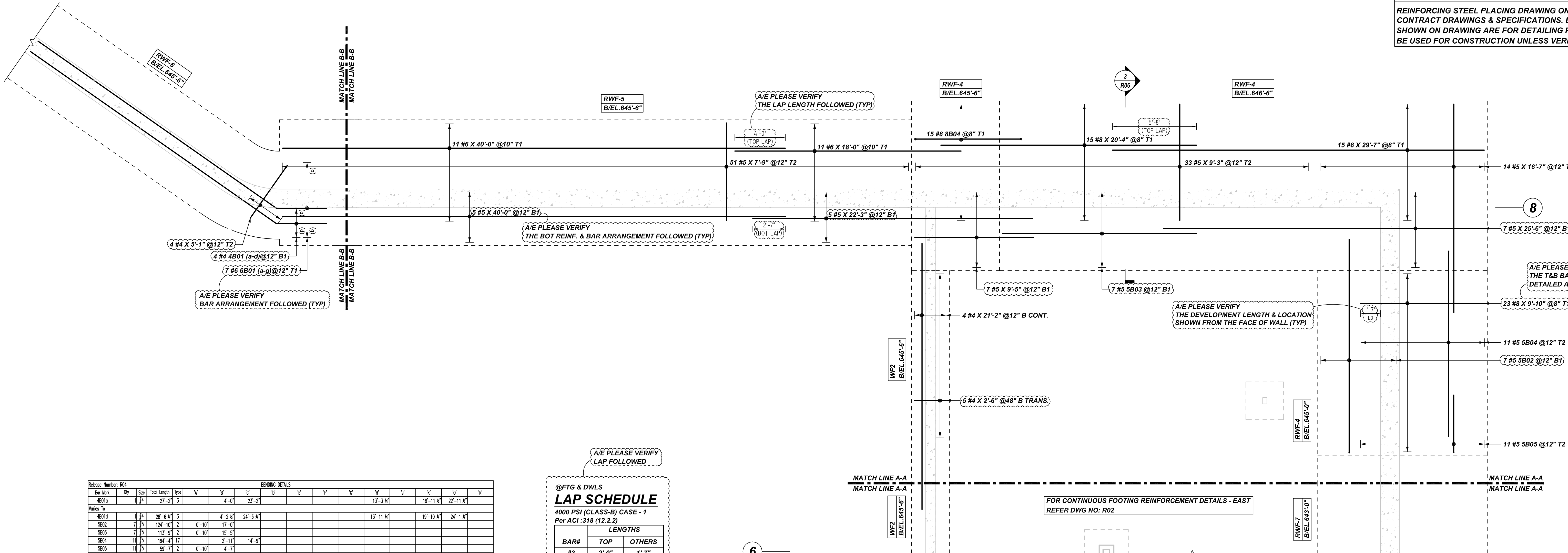
REV NO	DATE	APPROVAL	REV NO	DATE	SENT FOR
0	12.08.22				

DRAWN BY	DATE	JOB NO	SHEET NO.
JSN/SS	12.08.22	M92271059P	R02

NOTICE

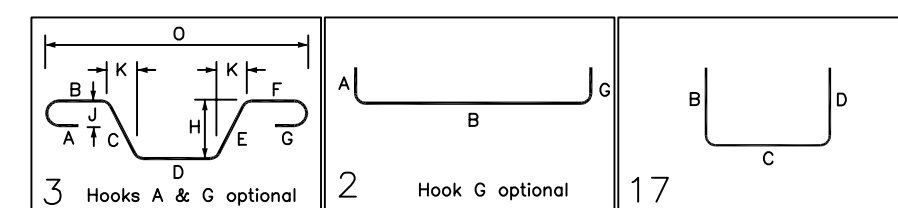
SHORTAGES, IMPROPER FABRICATION OR CLAIMS FOR ANY OTHER REASON MUST BE REPORTED TO THIS COMPANY WITHIN 10 DAYS FROM ORIGINAL DELIVERY. THIS COMPANY ALSO RESERVES THE RIGHT TO FIELD INSPECT MATERIALS PRIOR TO REPLACEMENT OR RECONDITIONING OF MATERIALS AND WILL NOT BE LIABLE FOR CHARGES FROM WORK DONE IN THE FIELD WITHOUT PRIOR AUTHORIZATION FROM THIS COMPANY.

REINFORCING STEEL PLACING DRAWING ONLY. USE IN CONJUNCTION WITH CONTRACT DRAWINGS & SPECIFICATIONS. ELEVATIONS & DIMENSIONS SHOWN ON DRAWING ARE FOR DETAILING PURPOSES ONLY AND SHOULD NOT BE USED FOR CONSTRUCTION UNLESS VERIFIED BY ENGINEER OR CONTRACTOR.



Release Number: R04

Bar Mark	Qty	Size	Total Length	Type	x'	y'	z'	x'	y'	z'	x'	y'	z'	x'	y'	z'
BENDING DETAILS																
Notes To																
4801d	4	#4	28'-6 3/4"	3		4'-2 3/4"	24'-3 3/4"			15'-11 3/4"	19'-10 3/4"	24'-1 3/4"				
5602	7	#5	124'-10 1/2"	2		0'-10"	17'-0"									
5603	7	#5	115'-5 1/2"	2		0'-10"	15'-5"									
5604	11	#5	194'-4 1/2"	17		2'-11"	14'-9"									
5605	11	#5	59'-7 1/2"	2		0'-10"	4'-7"			12'-1 3/4"	17'-2 3/4"	21'-2 3/4"				
5601a	1	#5	25'-0 3/4"	3		4'-0"	21'-0 3/4"									
Notes To																
6801g	1	#6	28'-4 1/2"	3		4'-2 3/4"	24'-3 3/4"			15'-11 3/4"	19'-10 3/4"	24'-1 3/4"				
8804	15	#8	184'-8 3/4"	17		1'-4"	8'-6"	2'-5 3/4"								



LAP SCHEDULE
@FTG & DWLS
4000 PSI (CLASS-B) CASE - 1
Per ACI 318 (12.2.2)

BAR#	LENGTHS	
	TOP	OTHERS
#3	2'-0"	1'-7"
#4	2'-8"	2'-1"
#5	3'-4"	2'-7"
#6	4'-0"	3'-1"
#7	5'-10"	4'-6"
#8	6'-8"	5'-2"
#9	7'-7"	5'-10"
#10	8'-6"	6'-7"
#11	9'-5"	7'-3"

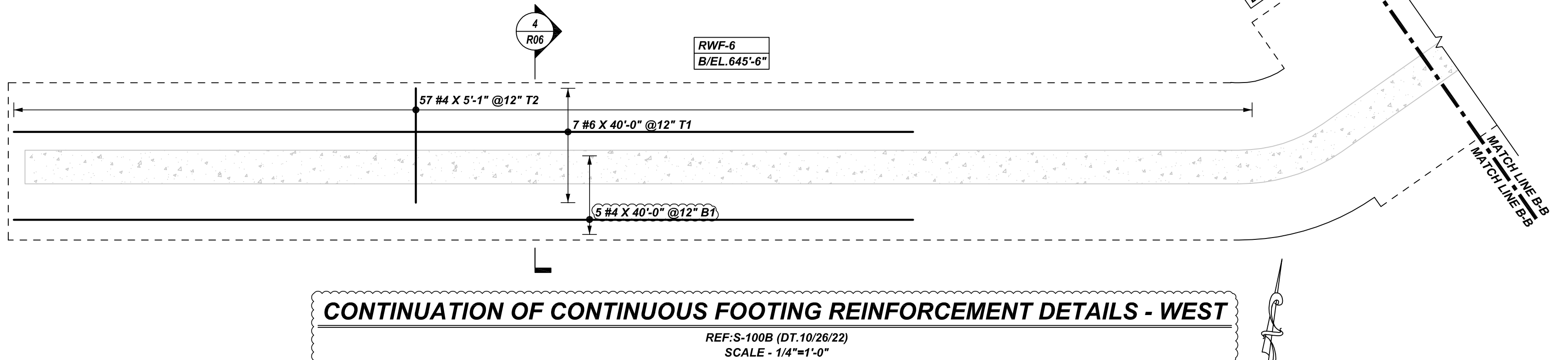
ALL TOP BARS ARE DEFINED AS HORIZ BARS WITH MORE THAN 12" OF CONCRETE BELOW BARS.

TYPICAL REINFORCING BAR CLEARANCE TABLE

LOCATION	MIN. COVER
FOOTING BOTTOM & SIDE	3" CLR
FOOTING TOP	2" CLR
PIER ALL SIDES	2" CLR



CONTINUOUS FOOTING REINFORCEMENT DETAILS - WEST
REF: S-100B (DT.10/26/22)
SCALE - 1/4"=1'-0"



CONTINUATION OF CONTINUOUS FOOTING REINFORCEMENT DETAILS - WEST
REF: S-100B (DT.10/26/22)
SCALE - 1/4"=1'-0"

REBAR GRADE 60 ASTM A-615

SPLICES USED		ABBREVIATIONS		BAR MARK SIZE EQUIVALENT	
CLASS B 4,000 psi UNO				Imperial	Soft Metric
TOP BARS	OTHER BARS	ADD. = Additional	D.O. = Door Opening	#3	#10
#3 24"	#3 19"	B.O.W. = Bottom of wall	DWLS. = Dowels	#4	#13
#4 32"	#4 25"	C.B. = Corner Bars	E.F. = Each Face	#5	#16
#5 40"	#5 31"	DIAG. = Diagonal	E.S. = Each Side	#6	#19
#6 48"	#6 37"	D.O. = Door Opening	E.W. = Each Way	#7	#22
#7 70"	#7 54"	DWLS. = Dowels	FTG. = Footing	#8	#25
#8 80"	#8 62"	F.F. = Far Face	HORIZ. = Horizontal	#9	#29
#9 91"	#9 70"	I.F. = Inside Face	INTERS. = Intersection	#10	#32
#10 102"	#10 79"	L.W. = long Way	L.W. = long Way	#11	#36
#11 113"	#11 87"	N.F. = Near Face	N.F. = Near Face		
#14	#14	O.F. = Outside Face	O.F. = Outside Face		
		S.W. = Short Way	S.W. = Short Way		
		T&B = Top & Bottom	T.O.W. = Top of Wall		
		T.O.W. = Top of Wall	Trans. = Transverse		
		VERT. = Vertical	VERT. = Vertical		

PINE PLAINS HOUSE
CONTINUOUS FOOTING REINFORCEMENT DETAILS - WEST
PINE PLAINS, NY 12567
CUSTOMER: UCE BUILDERS
DESIGNER: -

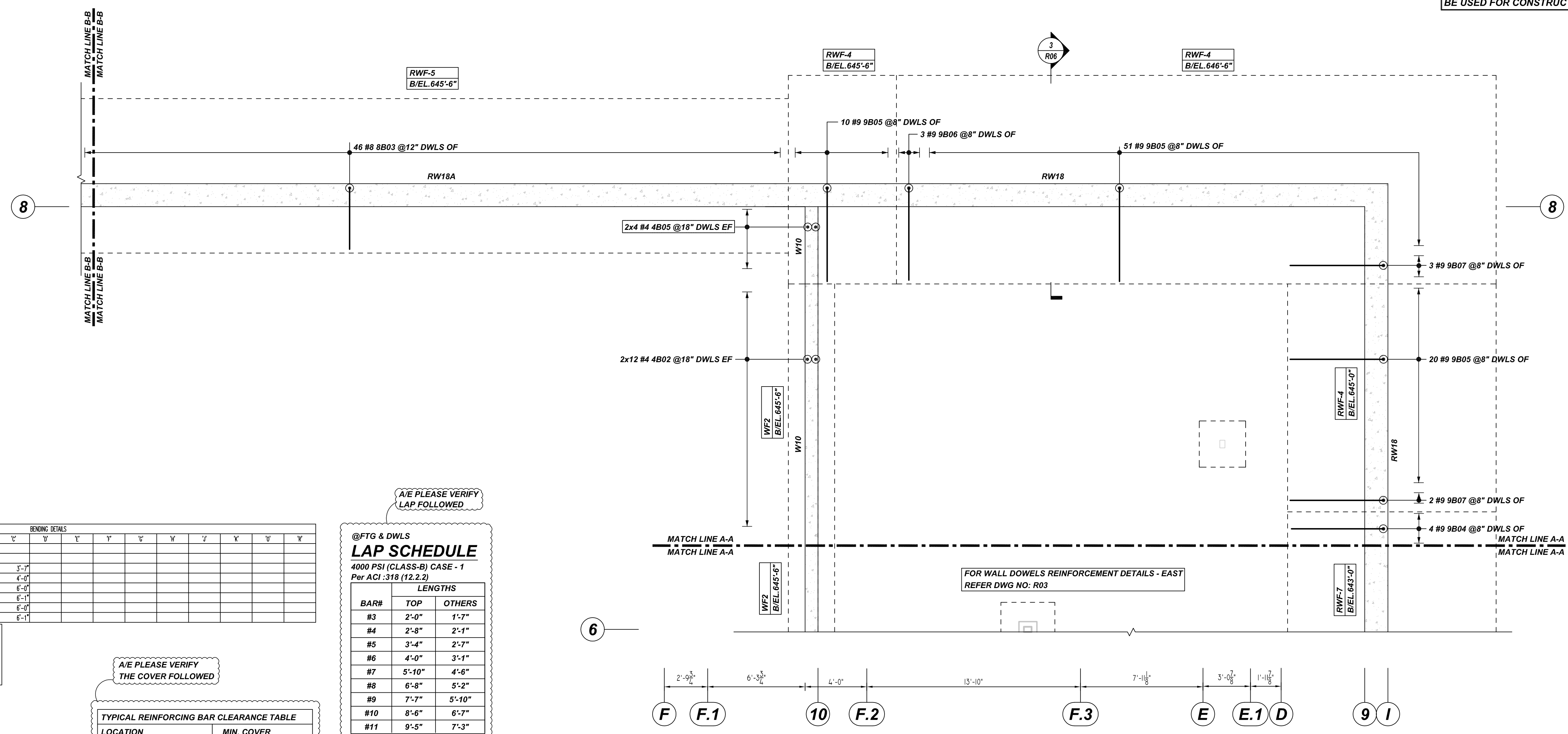
DRAWN BY	DATE	JOB NO	SHEET NO.
JSN/SS	12.08.22	M92271059P	R04

REV NO	DATE	APPROVAL	SENT FOR	REV NO	DATE	SENT FOR
0	12.08.22					

NOTICE

SHORTAGES, IMPROPER FABRICATION OR CLAIMS FOR ANY OTHER REASON MUST BE REPORTED TO THIS COMPANY WITHIN 10 DAYS FROM ORIGINAL DELIVERY. THIS COMPANY ALSO RESERVES THE RIGHT TO FIELD INSPECT MATERIALS PRIOR TO REPLACEMENT OR RECONDITIONING OF MATERIALS AND WILL NOT BE LIABLE FOR CHARGES FROM WORK DONE IN THE FIELD WITHOUT PRIOR AUTHORIZATION FROM THIS COMPANY.

REINFORCING STEEL PLACING DRAWING ONLY. USE IN CONJUNCTION WITH CONTRACT DRAWINGS & SPECIFICATIONS. ELEVATIONS & DIMENSIONS SHOWN ON DRAWING ARE FOR DETAILING PURPOSES ONLY AND SHOULD NOT BE USED FOR CONSTRUCTION UNLESS VERIFIED BY ENGINEER OR CONTRACTOR.



Bar Mark	Qty	Size	Total Length	Type	X	Y	Z	BENDING DETAILS								
4802	24	#4	82'-0"	2	0'-8"	2'-8"										
4805	8	#4	35'-4"	2	0'-8"	3'-9"										
8805	74	#6	558'-7"	17	4'-5"	3'-7"										
9803	51	#6	527'-0"	17	6'-4"	4'-0"										
9804	4	#9	51'-10"	17	6'-11 1/2"	6'-0"										
9805	81	#9	1183'-7 1/2"	17	7'-6 1/2"	6'-1"										
9806	3	#9	43'-7 1/2"	17	8'-6 1/2"	6'-0"										
9807	51	#9	75'-5"	17	9'-0"	6'-1"										

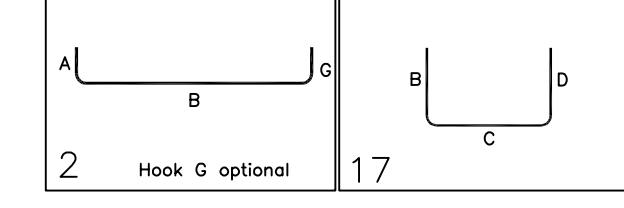
LAP SCHEDULE
4000 PSI (CLASS-B) CASE - 1
Per ACI 318 (12.2.2)

BAR#	LENGTHS	
	TOP	OTHERS
#3	2'-0"	1'-7"
#4	2'-8"	2'-1"
#5	3'-4"	2'-7"
#6	4'-0"	3'-1"
#7	5'-10"	4'-6"
#8	6'-8"	5'-2"
#9	7'-7"	5'-10"
#10	8'-6"	6'-7"
#11	9'-5"	7'-3"

ALL TOP BARS ARE DEFINED AS HORIZ BARS WITH MORE THAN 12" OF CONCRETE BELOW BARS.

TYPICAL REINFORCING BAR CLEARANCE TABLE

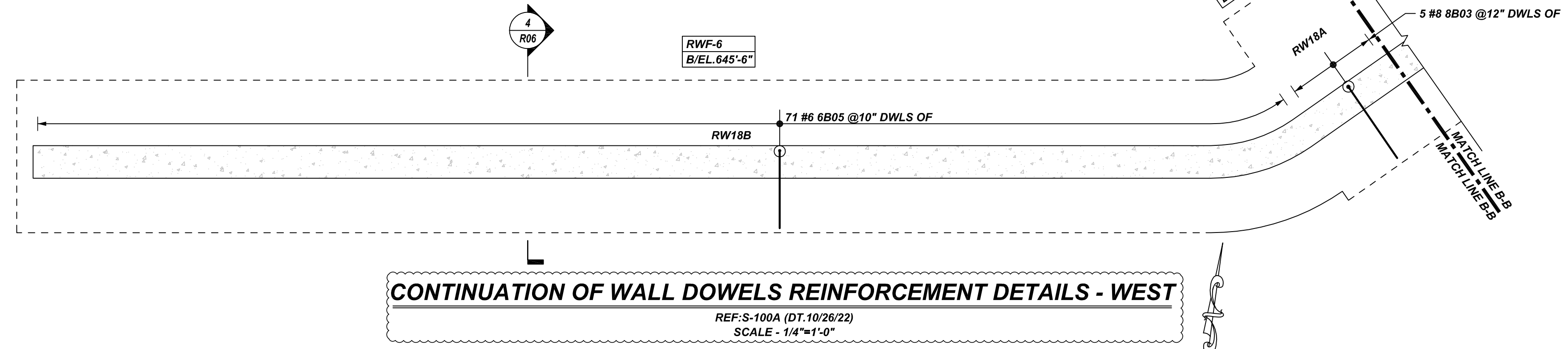
LOCATION	MIN. COVER
FOOTING BOTTOM & SIDE	3" CLR
FOOTING TOP	2" CLR
PIER ALL SIDES	2" CLR



FOR WALL DOWELS REINFORCEMENT DETAILS - EAST
REFER DWG NO: R03

WALL DOWELS REINFORCEMENT DETAILS - WEST
REF: S-100A (DT.10/26/22)
SCALE - 1/4"=1'-0"

A/E PLEASE VERIFY THE DOWEL BAR SIZE, REINF. & BAR ARRANGEMENT FOLLOWED (TYP)



CONTINUATION OF WALL DOWELS REINFORCEMENT DETAILS - WEST
REF: S-100A (DT.10/26/22)
SCALE - 1/4"=1'-0"

REBAR GRADE 60 ASTM A-615

SPLICES USED		ABBREVIATIONS		BAR MARK SIZE EQUIVALENT	
CLASS B 4,000 psi UNO		ADD.	Additional		
TOP BARS		B.O.W.	Bottom of wall		
OTHER BARS		C.B.	Corner Bars		
#3	24"	DIAG.	Diagonal	Imperial	Soft Metric
#4	32"	D.O.	Door Opening	#3	#10
#5	40"	DWLS.	Dowels	#4	#13
#6	48"	E.F.	Each Face	#5	#16
#7	70"	E.S.	Each Side	#6	#19
#8	80"	E.W.	Each Way	#7	#22
#9	91"	FTG.	Footing	#8	#25
#10	102"	F.F.	Far Face	#9	#29
#11	113"	HORIZ.	Horizontal	#10	#32
#14		I.F.	Inside Face	#11	#36
		INTERS.	Intersection		
		L.W.	Long Way		
		N.F.	Near Face		
		O.F.	Outside Face		
		S.W.	Short Way		
		T&B	Top & Bottom		
		T.O.W.	Top of Wall		
		Trans.	Transverse		
		VERT.	Vertical		

PINE PLAINS HOUSE
WALL DOWELS REINFORCEMENT DETAILS - WEST
PINE PLAINS, NY 12567

CUSTOMER: UCE BUILDERS
DESIGNER: -

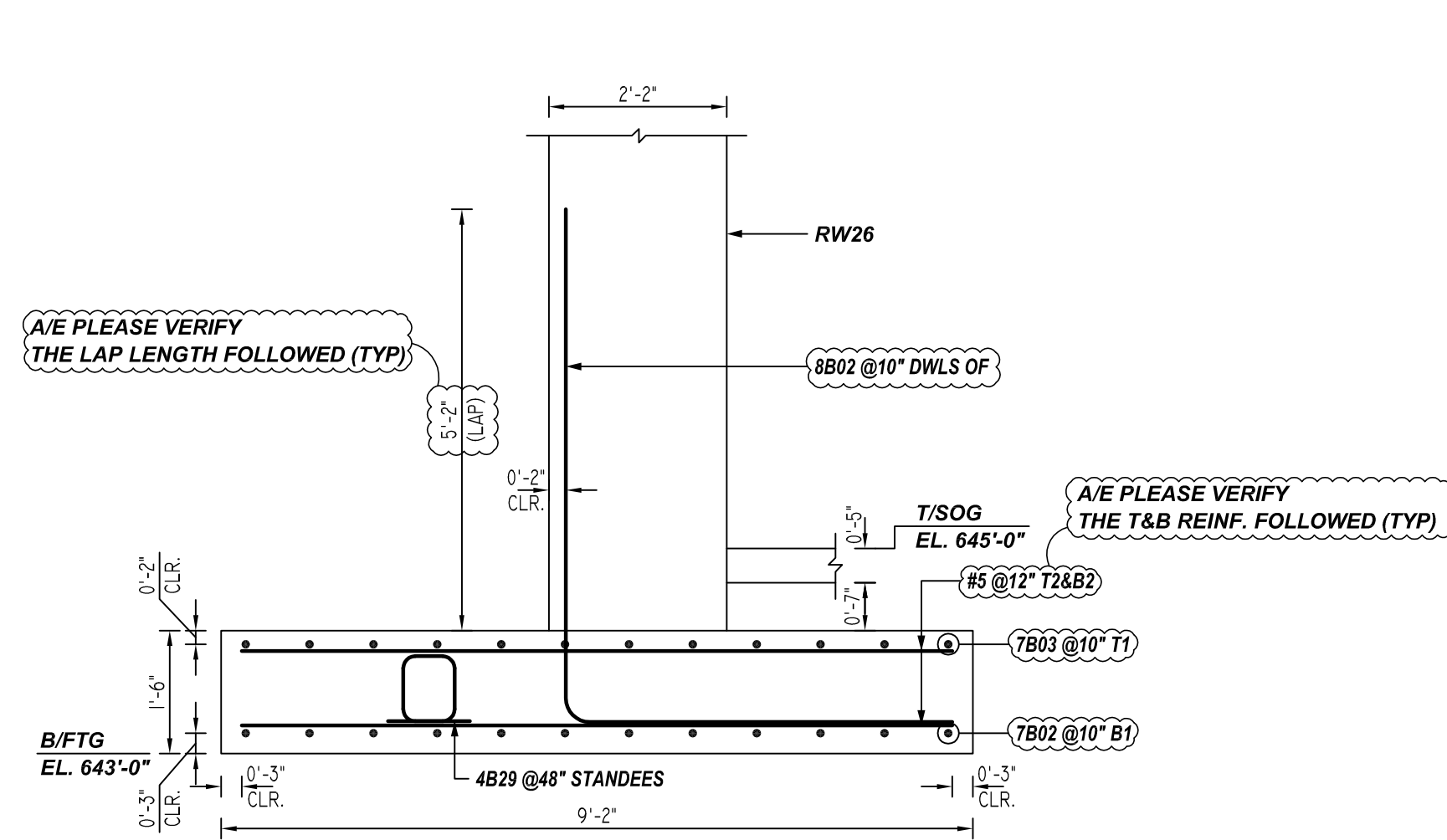
REV NO	DATE	SENT FOR	REV NO	DATE	SENT FOR
0	12.08.22	APPROVAL			

DRAWN BY	DATE	JOB NO	SHEET NO.
JSN/SS	12.08.22	M92271059P	R05

NOTICE

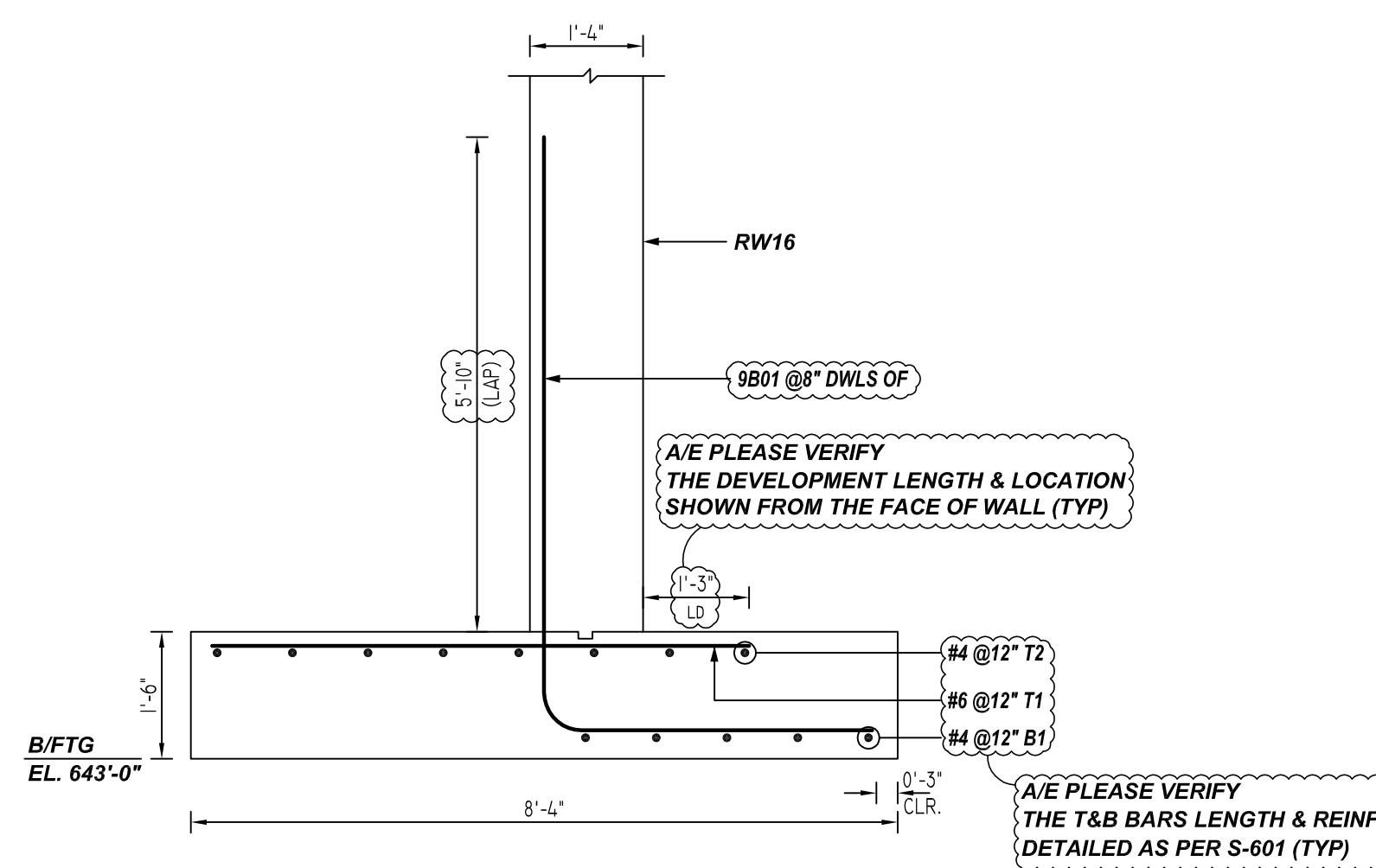
SHORTAGES, IMPROPER FABRICATION OR CLAIMS FOR ANY OTHER REASON MUST BE REPORTED TO THIS COMPANY WITHIN 10 DAYS FROM ORIGINAL DELIVERY. THIS COMPANY ALSO RESERVES THE RIGHT TO FIELD INSPECT MATERIALS PRIOR TO REPLACEMENT OR RECONDITIONING OF MATERIALS AND WILL NOT BE LIABLE FOR CHARGES FROM WORK DONE IN THE FIELD WITHOUT PRIOR AUTHORIZATION FROM THIS COMPANY.

REINFORCING STEEL PLACING DRAWING ONLY. USE IN CONJUNCTION WITH CONTRACT DRAWINGS & SPECIFICATIONS. ELEVATIONS & DIMENSIONS SHOWN ON DRAWING ARE FOR DETAILING PURPOSES ONLY AND SHOULD NOT BE USED FOR CONSTRUCTION UNLESS VERIFIED BY ENGINEER OR CONTRACTOR.



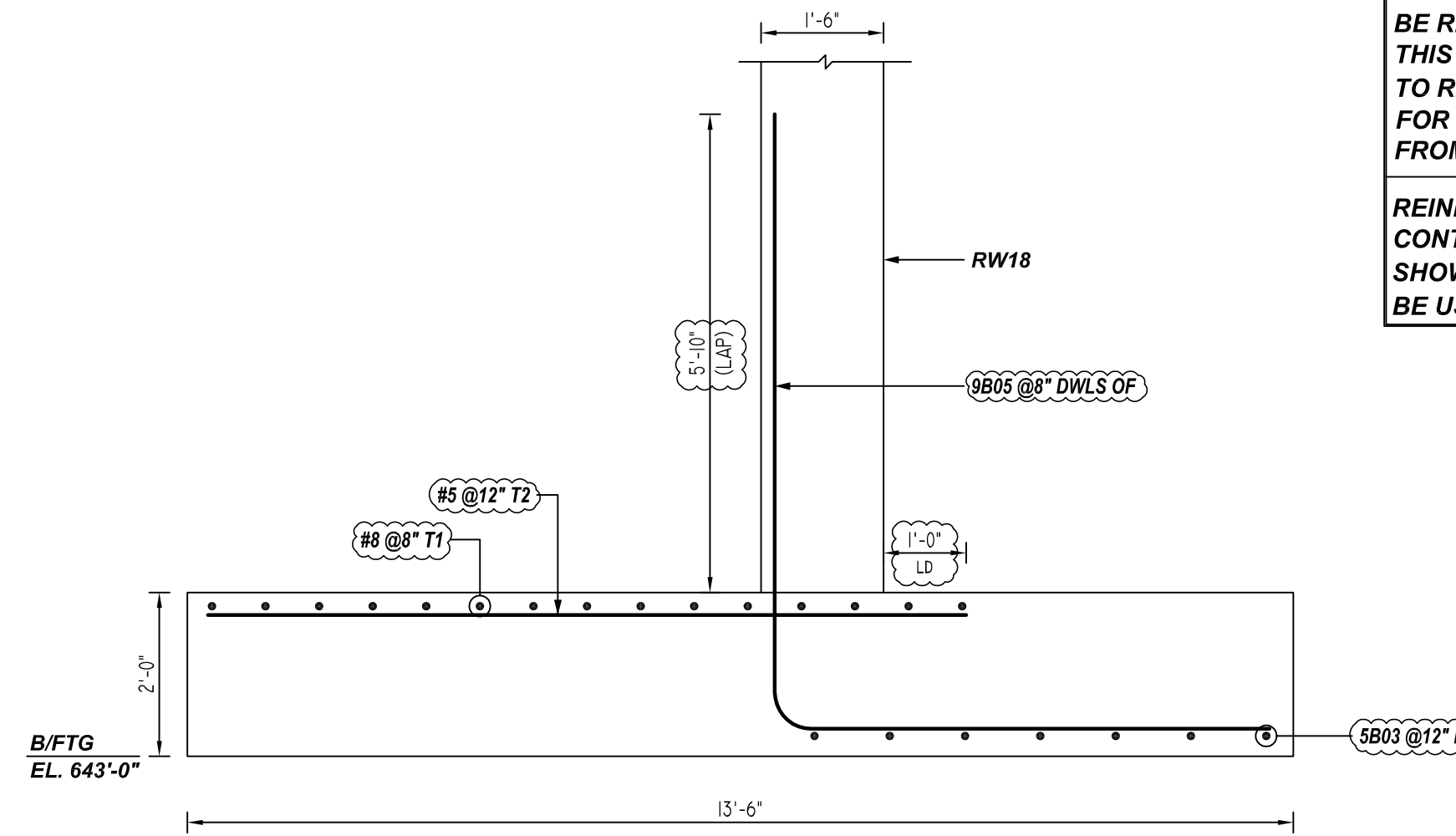
1 SECTION
REF: S-301.00 (DT. 10/26/19)
SCALE: 1/2" = 1'-0"

A/E PLEASE VERIFY BAR ARRANGEMENT FOLLOWED (TYP)

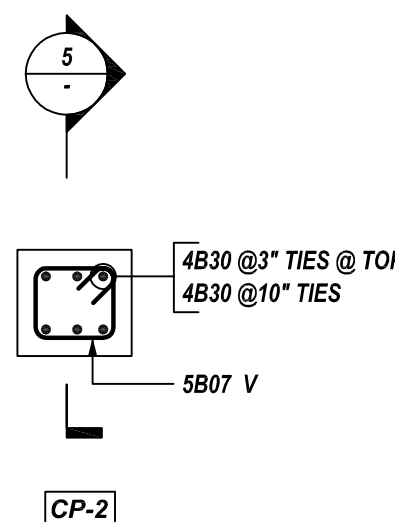


2 SECTION
REF: S-601.00 (DT. 10/26/19)
SCALE: 1/2" = 1'-0"

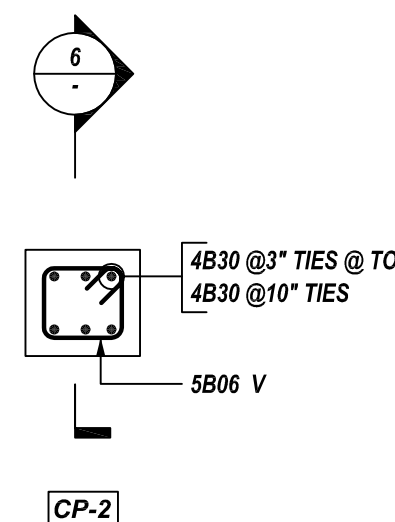
A/E PLEASE VERIFY THE T&B BARS LENGTH & REINF. DETAILED AS PER S-601 (TYP)



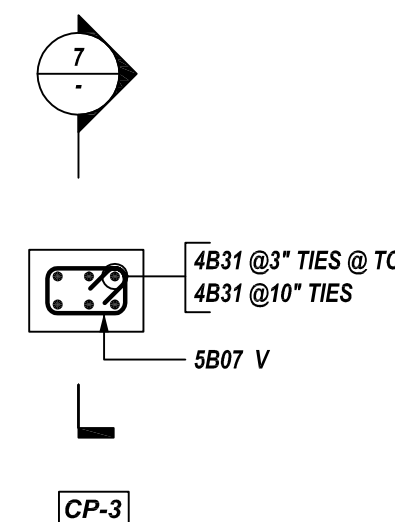
3 SECTION
REF: S-601.00 (DT. 10/26/19)
SCALE: 1/2" = 1'-0"



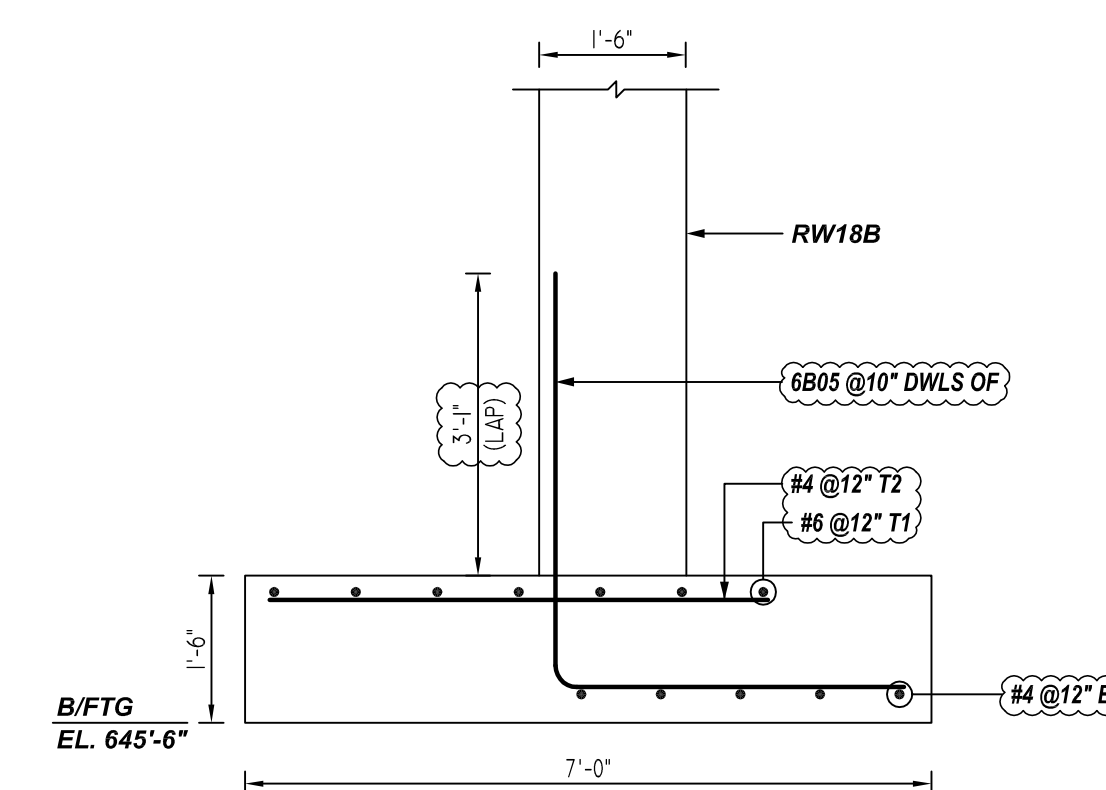
A DETAIL
REF: S-100A & S-101 (DT. 10/26/22)
SCALE: 1/2" = 1'-0"
(2x LOCATIONS)



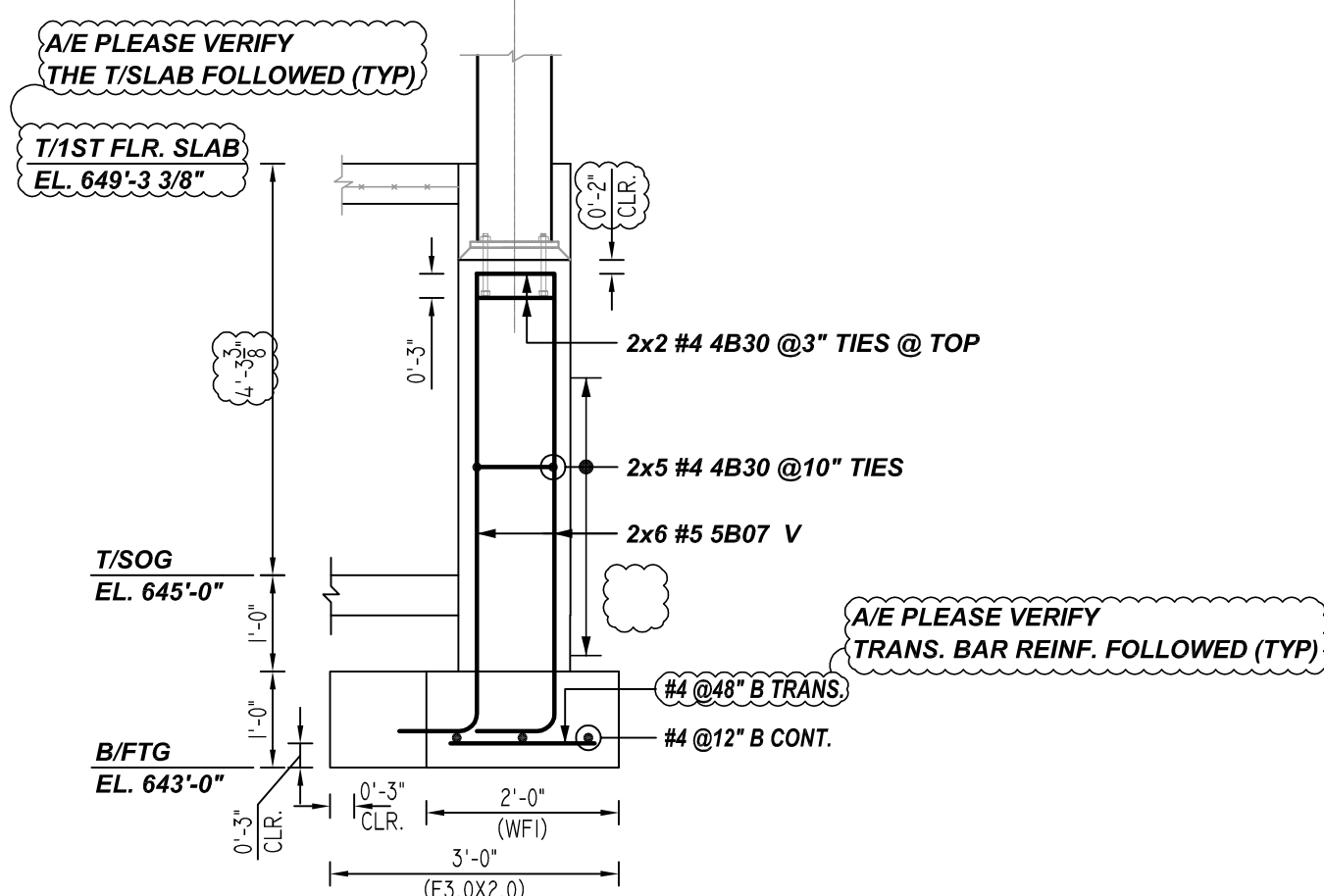
B DETAIL
REF: S-100A & S-101 (DT. 10/26/22)
SCALE: 1/2" = 1'-0"
(6x LOCATIONS)



C DETAIL
REF: S-100A & S-101 (DT. 10/26/22)
SCALE: 1/2" = 1'-0"

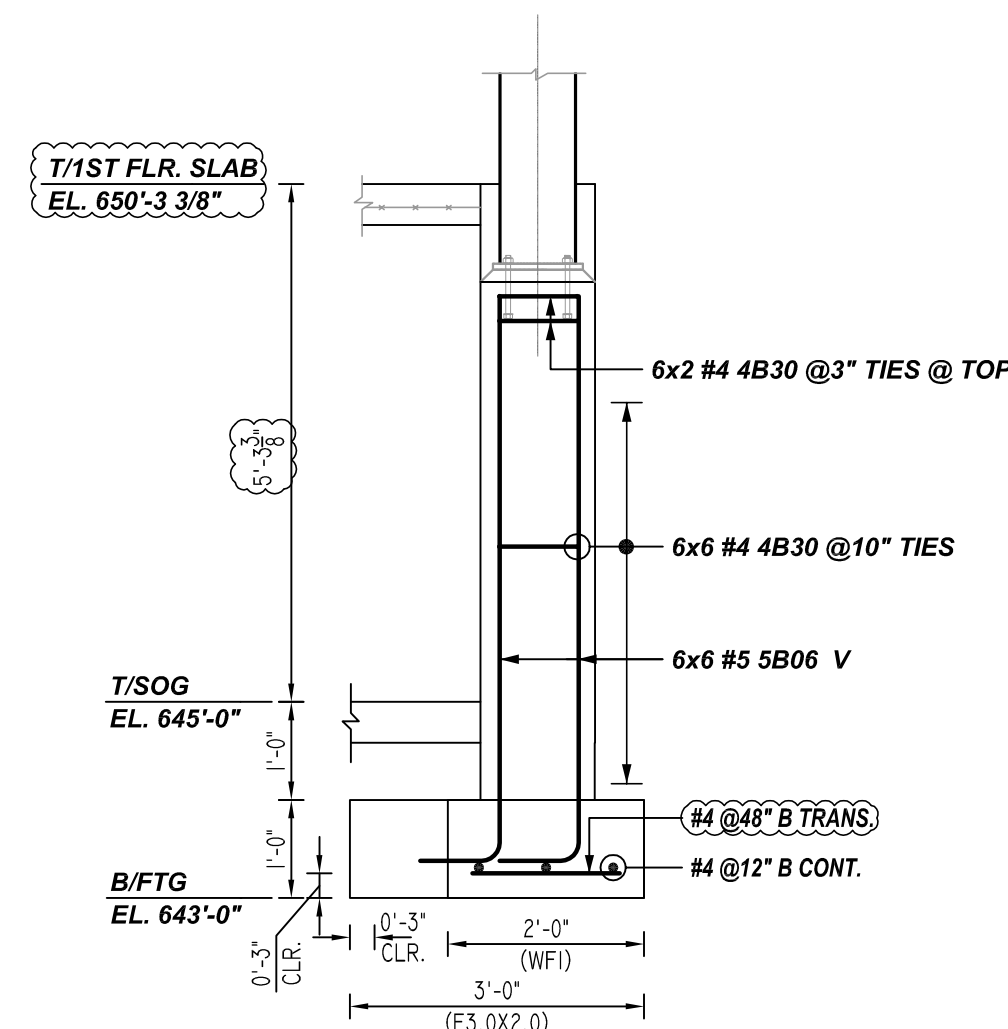


4 SECTION
REF: S-601.00 (DT. 10/26/19)
SCALE: 1/2" = 1'-0"

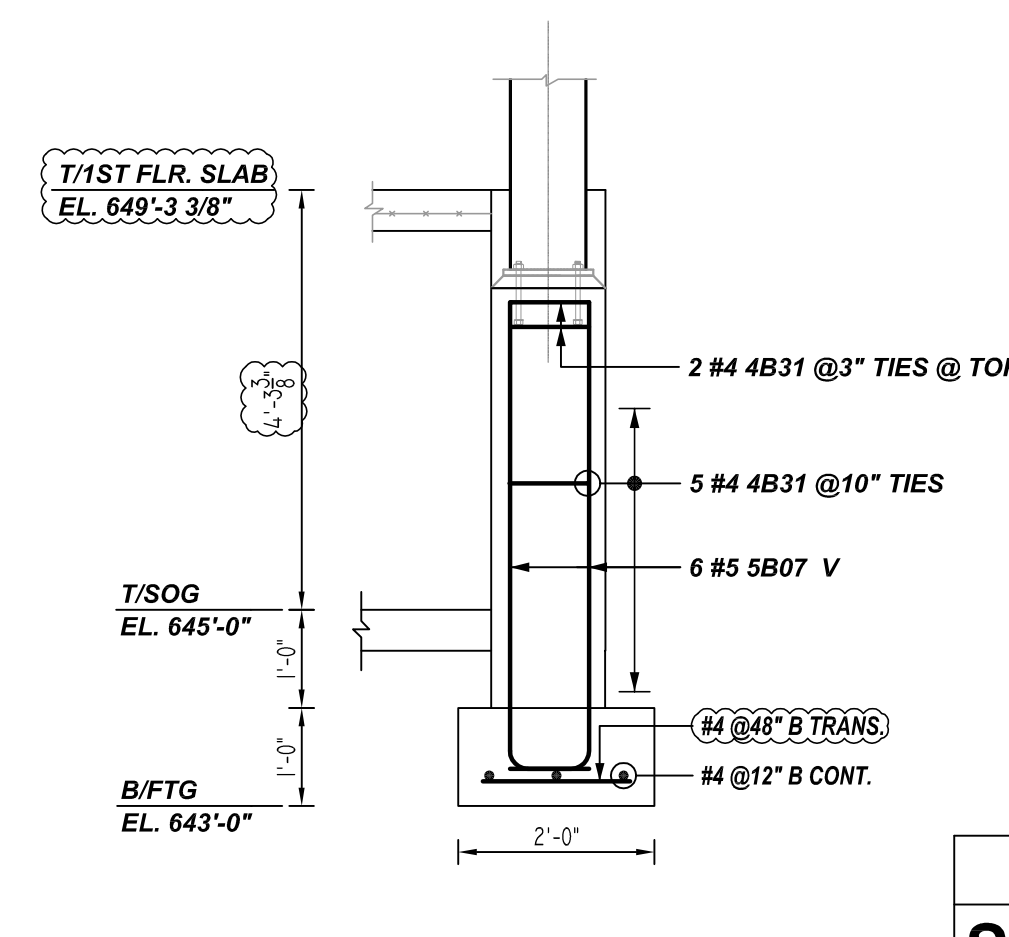


5 SECTION
REF: S-501.00 (DT. 10/26/19)
SCALE: 1/2" = 1'-0"

A/E PLEASE VERIFY BAR ARRANGEMENT FOLLOWED (TYP)

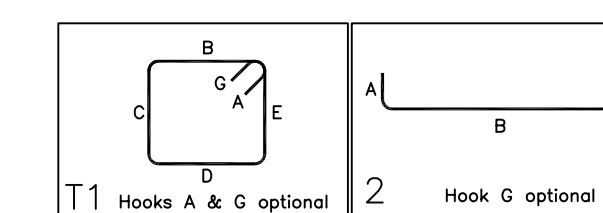


6 SECTION
REF: S-501.00 (DT. 10/26/19)
SCALE: 1/2" = 1'-0"



7 SECTION
REF: S-501.00 (DT. 10/26/19)
SCALE: 1/2" = 1'-0"

Bar Mark	Qty	Size	Total Length	Type	X	Y	Z	BONDING DETAILS												
4B30	62	#4	242'-10"	T1	0'-4"	0'-10"	0'-9"	0'-10"	0'-9"	0'-4"										
4B31	7	#4	23'-11"	T1	0'-4"	0'-10"	0'-5"	0'-10"	0'-5"	0'-4"										
5B06	36	#5	237'-9"	2	0'-10"	5'-9"														
5B07	18	#5	100'-10"	2	0'-10"	4'-9"														



A/E PLEASE VERIFY THE COVER FOLLOWED

LOCATION	MIN. COVER
FOOTING BOTTOM & SIDE	3" CLR
FOOTING TOP	2" CLR
PIER ALL SIDES	2" CLR

A/E PLEASE VERIFY LAP FOLLOWED

LAP SCHEDULE
4000 PSI (CLASS-B) CASE - 1
Per ACI 318 (12.2.2)

BAR#	LENGTHS	
	TOP	OTHERS
#3	2'-0"	1'-7"
#4	2'-8"	2'-1"
#5	3'-4"	2'-7"
#6	4'-0"	3'-1"
#7	5'-10"	4'-6"
#8	6'-8"	5'-2"
#9	7'-7"	5'-10"
#10	8'-6"	6'-7"
#11	9'-5"	7'-3"

ALL TOP BARS ARE DEFINED AS HORIZ BARS WITH MORE THAN 12" OF CONCRETE BELOW BARS.

REBAR GRADE 60 ASTM A-615

SPLICES USED		ABBREVIATIONS		BAR MARK SIZE EQUIVALENT	
CLASS B 4,000 psi UNO		ADD.	= Additional	Imperial	Soft Metric
TOP BARS	OTHER BARS	B.O.W.	= Bottom of wall	#3	#10
#3 24"	#3 19"	C.B.	= Corner Bars	#4	#13
#4 32"	#4 25"	DIA.G.	= Diagonal	#5	#16
#5 40"	#5 31"	D.O.	= Door Opening	#6	#19
#6 48"	#6 37"	D.W.L.S.	= Dowels	#7	#22
#7 70"	#7 54"	E.F.	= Each Face	#8	#25
#8 80"	#8 62"	E.S.	= Each Side	#9	#29
#9 91"	#9 70"	E.W.	= Each Way	#10	#32
#10 102"	#10 79"	FTG.	= Footing	#11	#36
#11 113"	#11 87"	F.F.	= Far Face		
#14	#14	HORIZ.	= Horizontal		
		I.F.	= Inside Face		
		INTERS.	= Intersection		
		L.W.	= long Way		
		N.F.	= Near Face		
		O.F.	= Outside Face		
		S.W.	= Short Way		
		T&B	= Top & Bottom		
		T.O.W.	= Top of Wall		
		Trans.	= Transverse		
		VERT.	= Vertical		

PINE PLAINS HOUSE
CONTINUOUS FTG & WALL DOWELS REINF. DETAILS - EAST & WEST
PINE PLAINS, NY 12567

CUSTOMER: UCE BUILDERS
DESIGNER: -

REV NO	DATE	SENT FOR	REV NO	DATE	SENT FOR
0	12.08.22	APPROVAL			

DRAWN BY	DATE	JOB NO	SHEET NO.
JSN/SS	12.08.22	M92271059P	R06