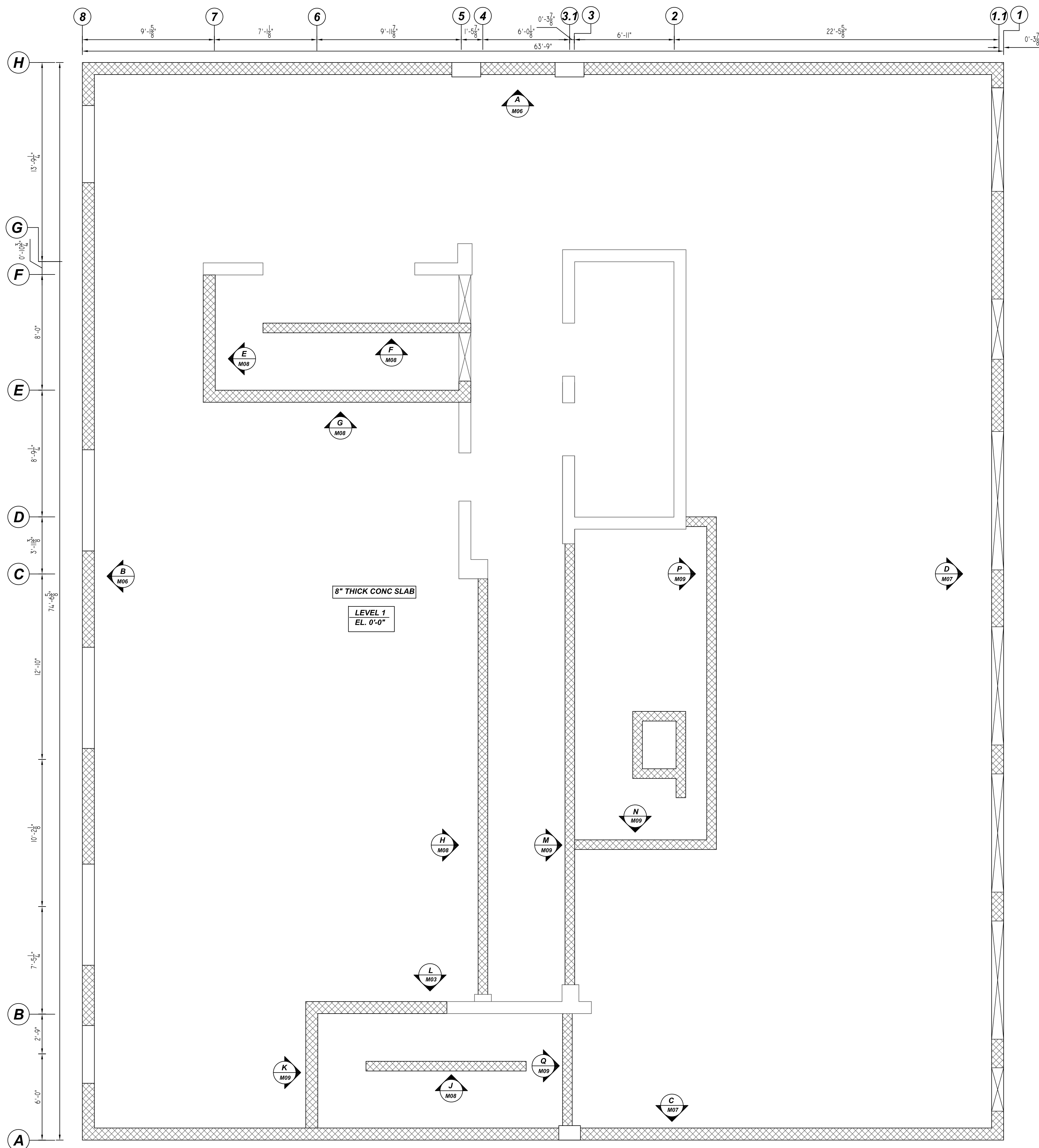


**NOTICE**

SHORTAGES, IMPROPER FABRICATION OR CLAIMS FOR ANY OTHER REASON MUST BE REPORTED TO THIS COMPANY WITHIN 10 DAYS FROM ORIGINAL DELIVERY. THIS COMPANY ALSO RESERVES THE RIGHT TO FIELD INSPECT MATERIALS PRIOR TO REPLACEMENT OR RECONDITIONING OF MATERIALS AND WILL NOT BE LIABLE FOR CHARGES FROM WORK DONE IN THE FIELD WITHOUT PRIOR AUTHORIZATION FROM THIS COMPANY.

REINFORCING STEEL PLACING DRAWING ONLY. USE IN CONJUNCTION WITH CONTRACT DRAWINGS & SPECIFICATIONS. ELEVATIONS & DIMENSIONS SHOWN ON DRAWING ARE FOR DETAILING PURPOSES ONLY AND SHOULD NOT BE USED FOR CONSTRUCTION UNLESS VERIFIED BY ENGINEER OR CONTRACTOR.



**LEVEL 1 TO LEVEL 2 CMU WALL LOCATIONS LAYOUT**  
SCALE - 1/4"=1'-0"  
REF:FO-101.00

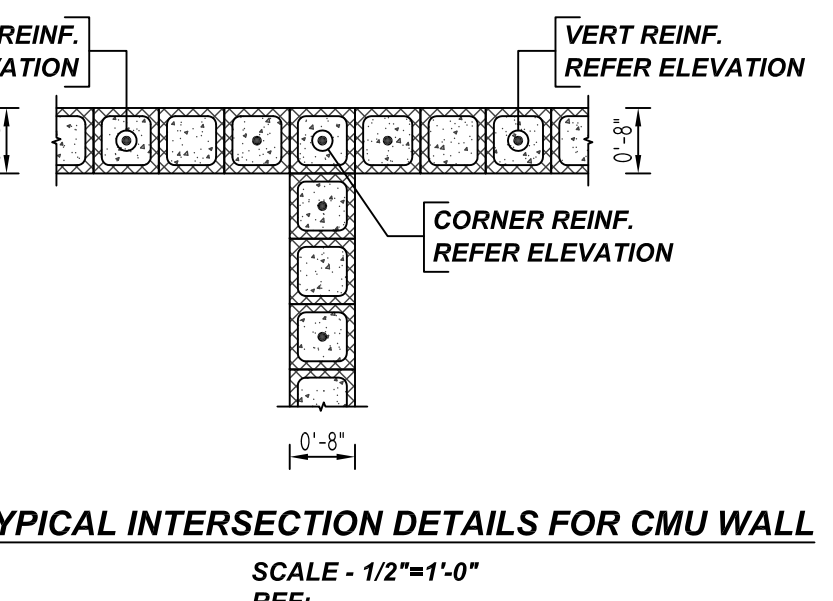
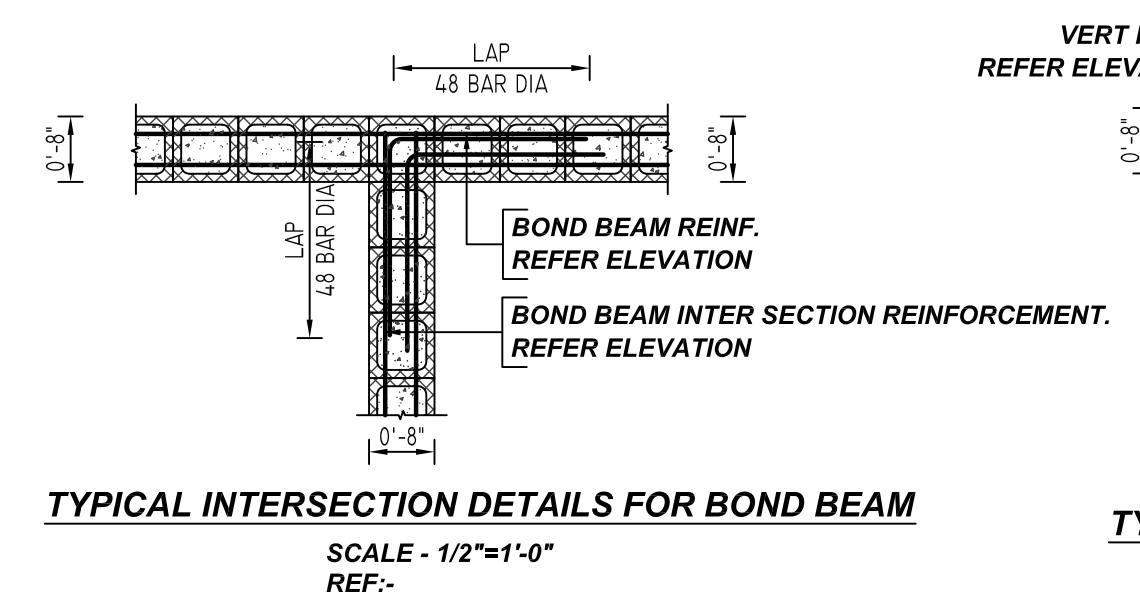
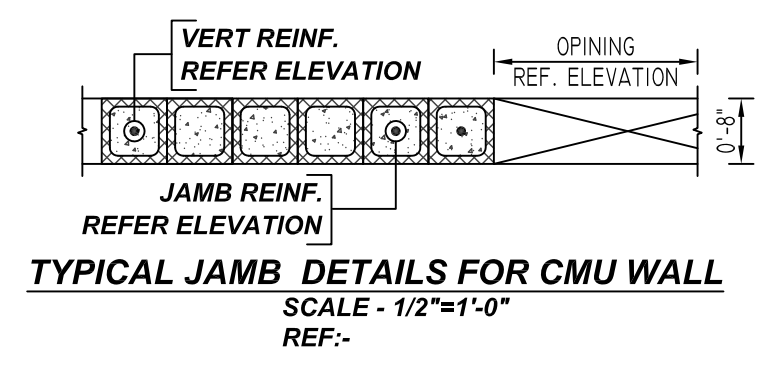
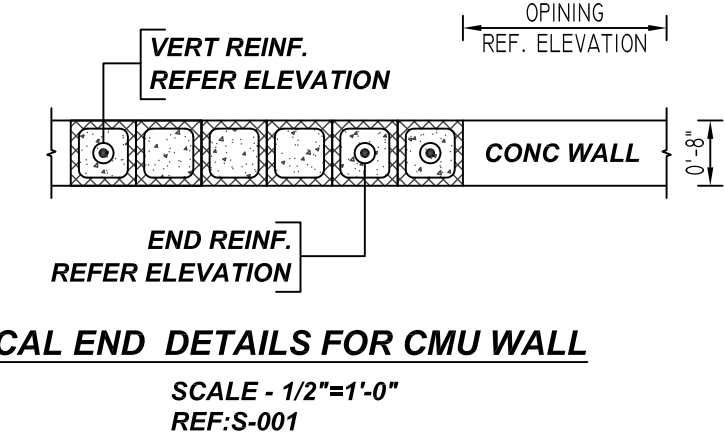
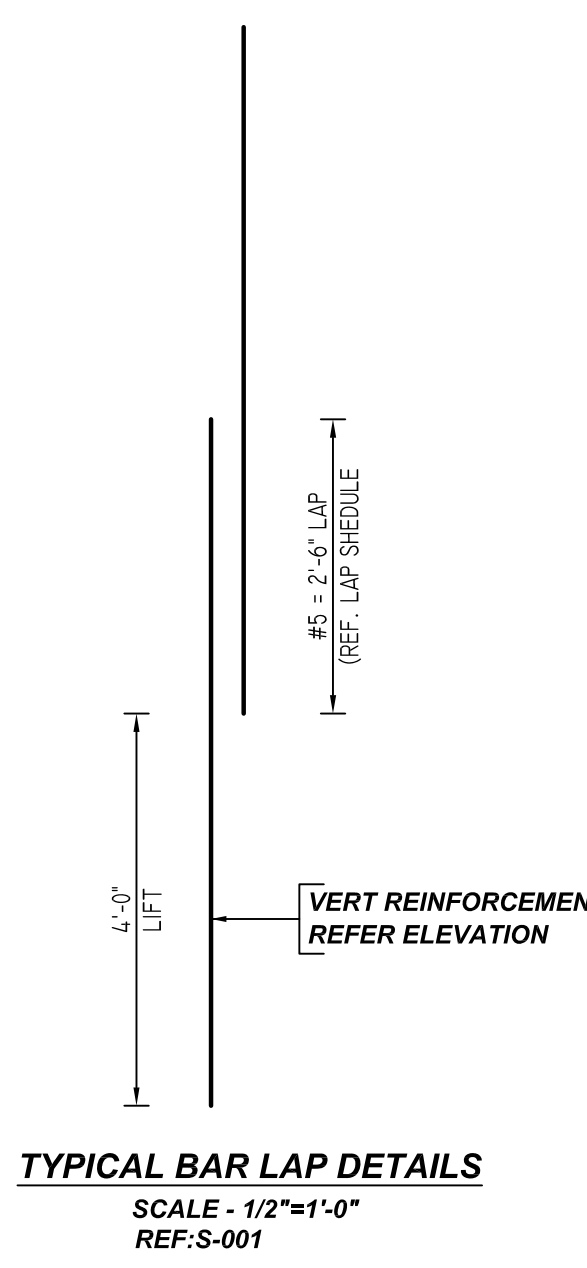
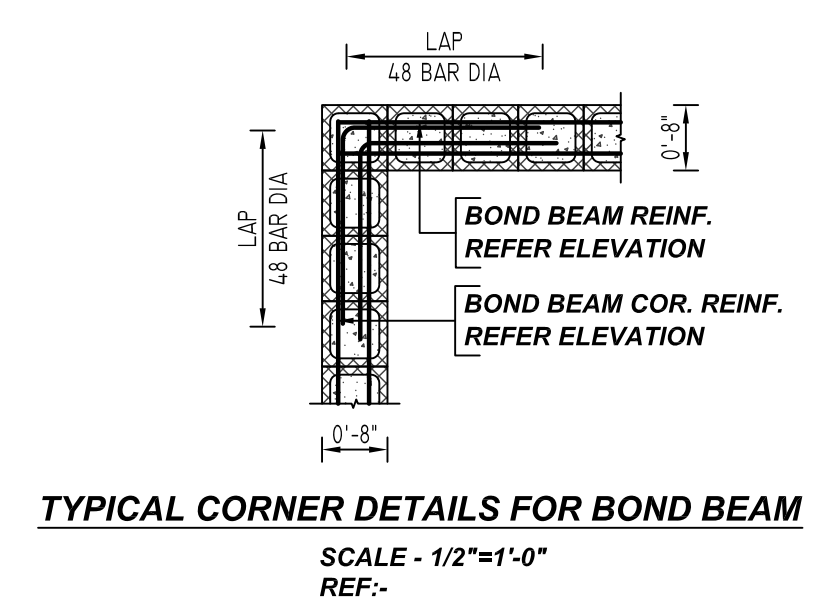
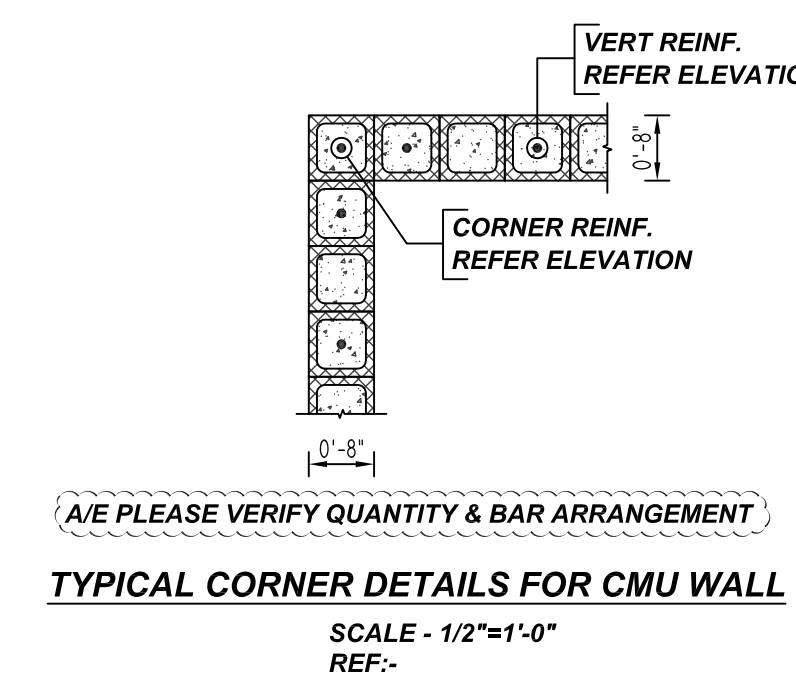
PLEASE CONFIRM LAP SCHEDULE WE ASSUME

TYPICAL REINFORCING BAR CLEARANCE TABLE	
LOCATION	MIN. COVER
CMU WALL TOP	2" CLR

**ALL BARS IN THIS DRAWING  
ASTM A615 GRADE 60  
BLACK UNCOATED**

FOR CMU WALL	
SIZE	48 Ø LAP
#3	18"
#4	24"
#5	30"
#6	36"
#7	42"
#8	48"

LAP SCHEDULE	
2x2x1 #5 X'-X" VERTS	NO. OF LOCATION
	NO. OF LIFT
	NO. OF BAR
2x1 #5 X'-X" VERTS	NO. OF LIFT (OR) NO. OF LOCATION
	NO. OF BAR
LIFT 1 TO LIFT 6	
2x1 #5 6'-6" VERTS L1-L6	



**REBAR GRADE 60 ASTM A-615**

SPLICES USED		ABBREVIATIONS		BAR MARK SIZE EQUIVALENT	
CLASS B 4,000 psi UNO				Imperial	Soft Metric
TOP BARS	OTHER BARS	ADD.	= Additional	#3	#10
#3	#3	B.O.W.	= Bottom of wall	#4	#13
#4	#4	C.B.	= Corner bars	#5	#16
#5	#5	DIAG.	= Diagonal	#6	#19
#6	#6	D.O.	= Door Opening	#7	#22
#7	#7	DWLS.	= Dowels	#8	#25
#8	#8	E.F.	= Each Face	#9	#29
#9	#9	E.S.	= Each Side	#10	#32
#10	#10	E.W.	= Each Way	#11	#36
#11	#11	FTG.	= Footing		
#14	#14	F.F.	= Far Face		
		HORIZ.	= Horizontal		
		I.F.	= Inside Face		
		INTERS.	= Intersection		
		L.W.	= long Way		
		N.F.	= Near Face		
		O.F.	= Outside Face		
		S.W.	= Short Way		
		T&B	= Top & Bottom		
		T.O.W.	= Top of Wall		
		Trans.	= Transverse		
		VERT.	= Vertical		

**778 MYRTLE AVENUE**  
LEVEL-1 TO LEVEL-2 CMU WALL REINFORCEMENT DETAILS  
**IMPACCT, BROOKLYN**

CUSTOMER: -  
DESIGNER: -

REV NO	DATE	SENT FOR	REV NO	DATE	SENT FOR	DRAWN BY	DATE	JOB NO	SHEET NO.
0	02.10.22	APPROVAL				SM/MET	02.10.22	M922P085	M05







