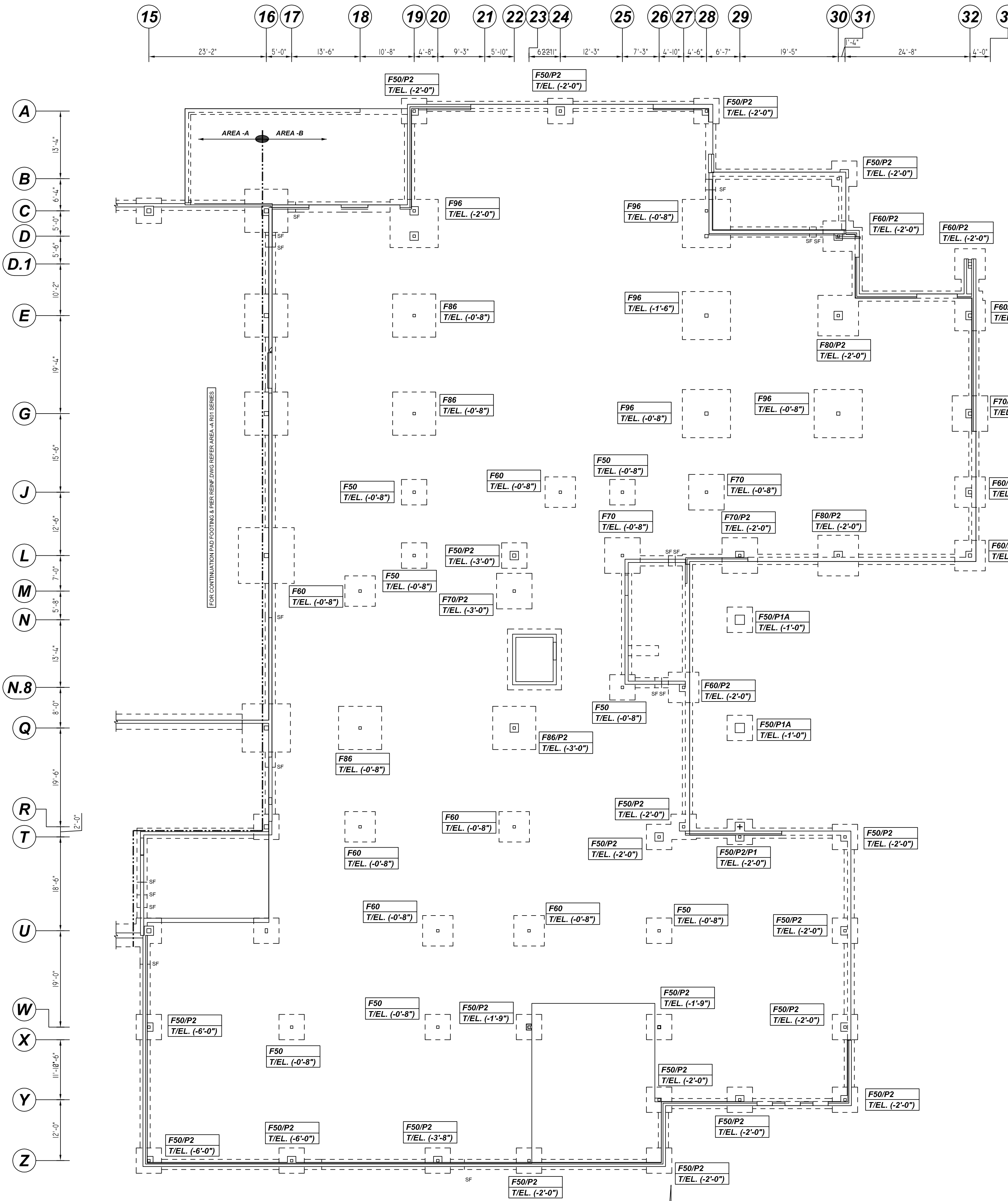


**NOTICE**

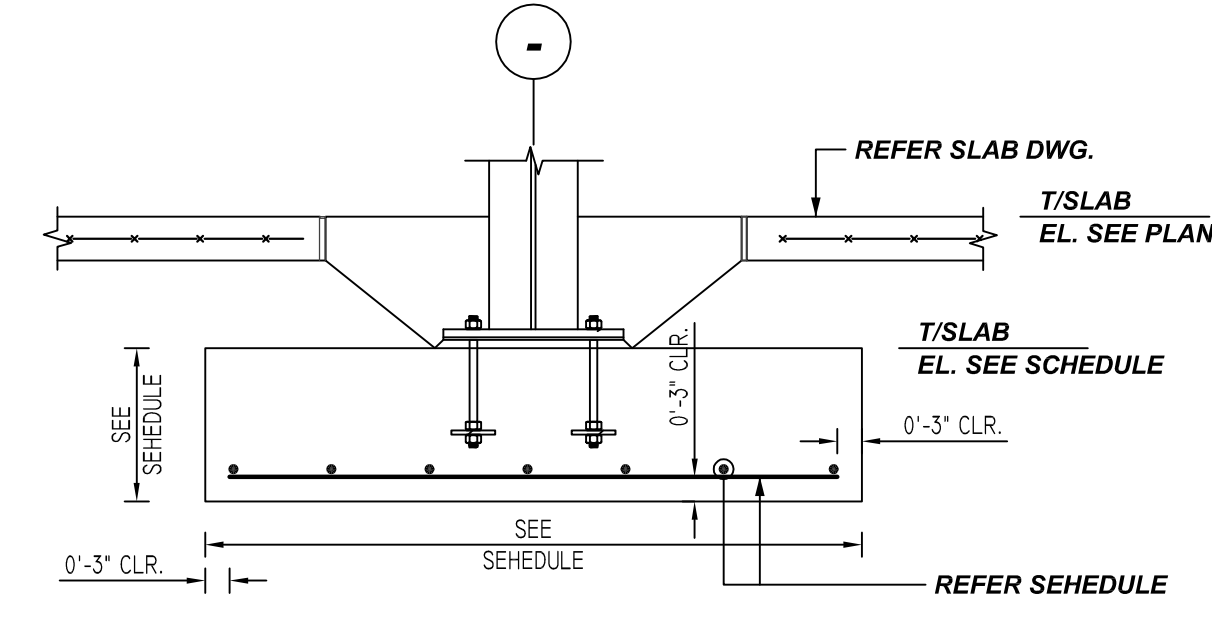
SHORTAGES, IMPROPER FABRICATION OR CLAIMS FOR ANY OTHER REASON MUST BE REPORTED TO THIS COMPANY WITHIN 10 DAYS FROM ORIGINAL DELIVERY. THIS COMPANY ALSO RESERVES THE RIGHT TO FIELD INSPECT MATERIALS PRIOR TO REPLACEMENT OR RECONDITIONING OF MATERIALS AND WILL NOT BE LIABLE FOR CHARGES FROM WORK DONE IN THE FIELD WITHOUT PRIOR AUTHORIZATION FROM THIS COMPANY.

REINFORCING STEEL PLACING DRAWING ONLY. USE IN CONJUNCTION WITH CONTRACT DRAWINGS & SPECIFICATIONS. ELEVATIONS & DIMENSIONS SHOWN ON DRAWING ARE FOR DETAILING PURPOSES ONLY AND SHOULD NOT BE USED FOR CONSTRUCTION UNLESS VERIFIED BY ENGINEER OR CONTRACTOR.

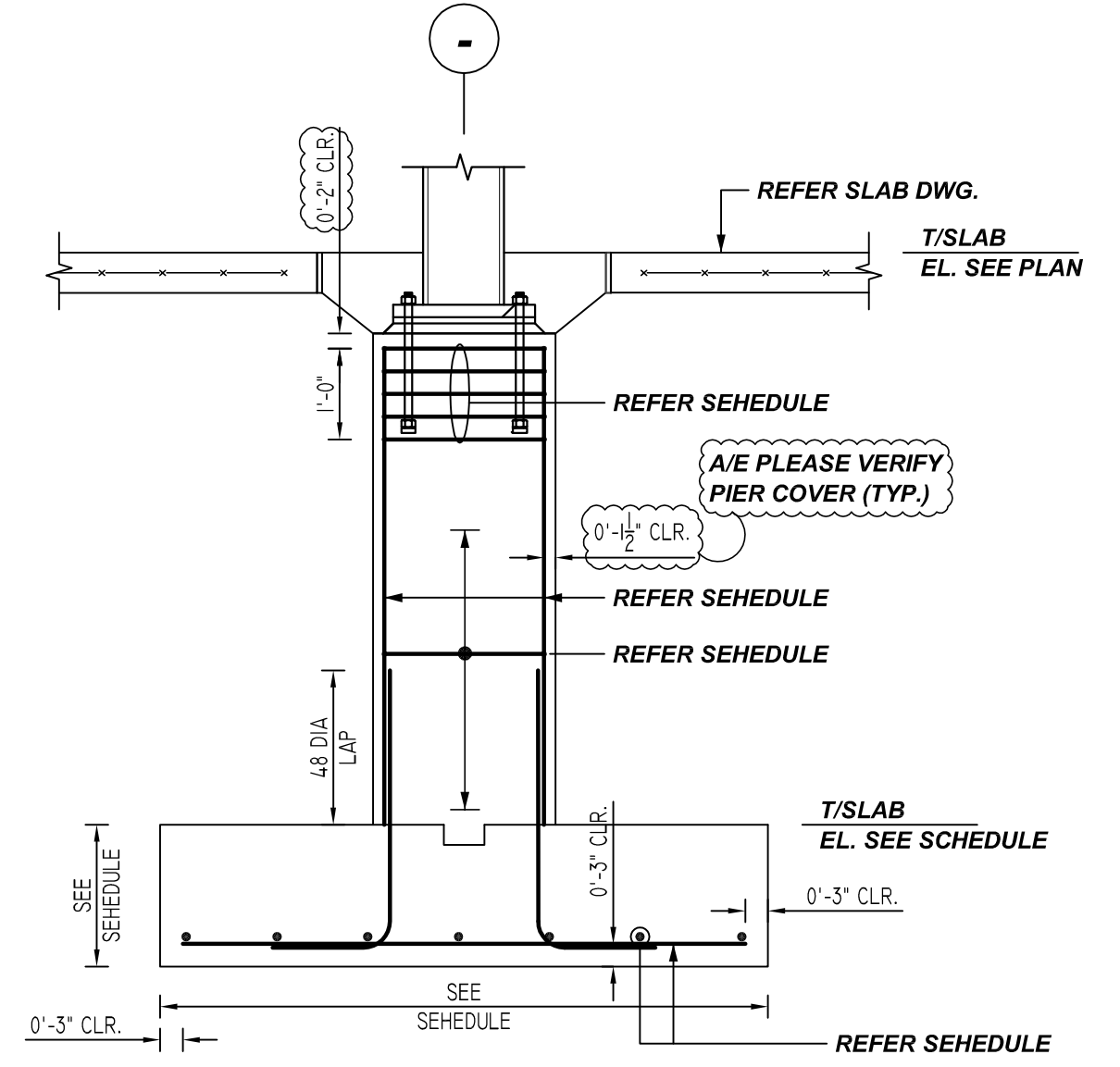


| MARK | QTY | SIZE              | GRID LOCATION  | REINFORCING            | REMARK     |
|------|-----|-------------------|--|------------------------|------------|
| F50  | 31  | 5'-0"x5'-0"x1'-2" | A/19, A/24, A/28, B/31, J/19, J/25, L/19, L/22, N/29, N/25, Q/25, R/27, T/26, T/29, T/31, U/26, U/31, W/15, W/17, W/20, W/23, W/26, W/31, Y/26, Y/29, Y/31, Z/15, Z/17, Z/20, Z/23, Z/26 | 31x2x6 #5 X 4'-6" B EW | DETAIL - 1 |
| F60  | 12  | 6'-0"x6'-0"x1'-2" | D/30, D/32, E/32, J/24, J/32, L/32, M/18, N.8/27, R/18, R/22, U/20, U/23   | 12x2x7 #6 X 5'-6" B EW | DETAIL - 1 |
| F70  | 5   | 7'-0"x7'-0"x1'-4" | G/32, J/28, L/25, L/29, M/22   | 5x2x7 #7 X 6'-6" B EW  | DETAIL - 1 |
| F80  | 2   | 8'-0"x8'-0"x1'-6" | E/30, L/30   | 2x2x9 #7 X 7'-6" B EW  | DETAIL - 1 |
| F86  | 4   | 8'-6"x8'-6"x1'-6" | E/19, G/19, Q/18, Q/22   | 4x2x10 #7 X 8'-0" B EW | DETAIL - 1 |
| F96  | 5   | 9'-6"x9'-6"x1'-8" | C/19, C/28, E/28, G/28, G/30   | 5x2x10 #8 X 9'-0" B EW | DETAIL - 1 |

| MARK | QTY | SIZE          | GRID LOCATION  | BOT. OF FTG.  | TOP OF FTG.  | TOP OF PIER   | VERTS            | TIES & ADD'L TIES                                     | REMARK     |
|------|-----|---------------|--|---------------|--------------|---------------|------------------|---|------------|
| P1   | 1   | 1'-10"x1'-10" | R/29   | B/FTG -3'-2"  | T/FTG -2'-0" | T/PIER -0'-8" | 8 #8 8D01 D/V    | 1 #3 3D01 @12" TIES<br>5 #3 3D01 @3" TIES @ TOP       | DETAIL - 2 |
| P1A  | 2   | 1'-10"x1'-10" | N/29 & N.8/29  | B/FTG -2'-2"  | T/FTG -1'-0" | T/PIER -0'-8" | 2x8 #8 8D02 D/V  | 2x2 #3 3D01 @3" TIES @ TOP                            | DETAIL - 2 |
| P2   | 18  | 1'-8"x1'-8"   | A/19, A/24, A/28, B/31, D/30, D/1/32, E/32, J/32, L/32, N.8/27, R/27, T/26, T/29, T/31, U/31, W/31, Y/31, Y/29 | B/FTG -3'-2"  | T/FTG -2'-0" | T/PIER -0'-8" | 18x6 #7 7D01 D/V | 18x1 #3 3D02 @12" TIES<br>18x5 #3 3D02 @3" TIES @ TOP | DETAIL - 2 |
| P2A  | 2   | 1'-8"x1'-8"   | G/32 & L/29  | B/FTG -3'-4"  | T/FTG -2'-0" | T/PIER -0'-8" | 2x6 #7 7D04 D/V  | 2x1 #3 3D02 @12" TIES<br>2x5 #3 3D02 @3" TIES @ TOP   | DETAIL - 2 |
| P2B  | 2   | 1'-8"x1'-8"   | E/30 & L/30  | B/FTG -3'-6"  | T/FTG -2'-0" | T/PIER -0'-8" | 2x6 #7 7D05 D/V  | 2x1 #3 3D02 @12" TIES<br>2x5 #3 3D02 @3" TIES @ TOP   | DETAIL - 2 |
| P2C  | 2   | 1'-8"x1'-8"   | C/19 & D/19  | B/FTG -3'-8"  | T/FTG -2'-0" | T/PIER -0'-8" | 2x6 #7 7D06 D/V  | 2x1 #3 3D02 @12" TIES<br>2x5 #3 3D02 @3" TIES @ TOP   | DETAIL - 2 |
| P2D  | 3   | 1'-8"x1'-8"   | W/15, Z/15 & Z/17  | B/FTG -7'-2"  | T/FTG -6'-0" | T/PIER -0'-8" | 3x6 #7 7D02 D/V  | 3x5 #3 3D02 @12" TIES<br>3x5 #3 3D02 @3" TIES @ TOP   | DETAIL - 2 |
| P2E  | 1   | 1'-8"x1'-8"   | Z/20   | B/FTG -4'-10" | T/FTG -3'-8" | T/PIER -0'-8" | 6 #7 7D03 D/V    | 3 #3 3D02 @12" TIES<br>5 #3 3D02 @3" TIES @ TOP       | DETAIL - 2 |

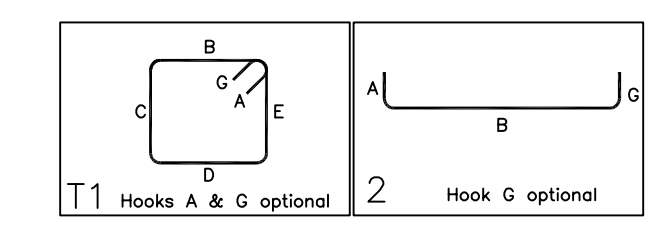


**TYPICAL INTERIOR SPREAD FOOTING DETAIL -1**  
REF: S501 (DT.04/14/22)  
SCALE: 1/2" = 1'-0"



**TYPICAL SPREAD FOOTING & PIER DETAIL -2**  
REF: S501 (DT.04/14/22)  
SCALE: 1/2" = 1'-0"

| Bar No. | Qty | Size | Total Length | Type | X     | Y     | Z     | W     | V     | U     | T     | S     | R     | Q | P | O | N | M | L | K | J | I | H | G | F | E | D | C | B | A |
|---------|-----|------|--------------|------|-------|-------|-------|-------|-------|-------|-------|-------|-------|---|---|---|---|---|---|---|---|---|---|---|---|---|---|---|---|---|
| 3001    | 10  | #3   | 7'-0"        | T1   | 0'-4" | 1'-7" |       |       | 1'-7" | 1'-7" | 1'-7" | 1'-7" | 1'-7" |   |   |   |   |   |   |   |   |   |   |   |   |   |   |   |   |   |
| 3002    | 18  | #3   | 6'-4"        | T1   | 0'-4" | 1'-5" | 1'-5" | 1'-5" | 1'-5" |       |       |       |       |   |   |   |   |   |   |   |   |   |   |   |   |   |   |   |   |   |
| 7001    | 108 | #7   | 3'-3"        | 2    | 1'-2" | 2'-1" |       |       |       |       |       |       |       |   |   |   |   |   |   |   |   |   |   |   |   |   |   |   |   |   |
| 7002    | 18  | #7   | 7'-3"        | 2    | 1'-2" | 6'-1" |       |       |       |       |       |       |       |   |   |   |   |   |   |   |   |   |   |   |   |   |   |   |   |   |
| 7003    | 6   | #7   | 4'-11"       | 2    | 1'-2" | 3'-5" |       |       |       |       |       |       |       |   |   |   |   |   |   |   |   |   |   |   |   |   |   |   |   |   |
| 7004    | 12  | #7   | 3'-5"        | 2    | 1'-2" | 2'-3" |       |       |       |       |       |       |       |   |   |   |   |   |   |   |   |   |   |   |   |   |   |   |   |   |
| 7005    | 12  | #7   | 3'-7"        | 2    | 1'-2" | 2'-5" |       |       |       |       |       |       |       |   |   |   |   |   |   |   |   |   |   |   |   |   |   |   |   |   |
| 7006    | 12  | #7   | 3'-9"        | 2    | 1'-2" | 2'-7" |       |       |       |       |       |       |       |   |   |   |   |   |   |   |   |   |   |   |   |   |   |   |   |   |
| 8001    | 8   | #6   | 3'-5"        | 2    | 1'-4" | 2'-1" |       |       |       |       |       |       |       |   |   |   |   |   |   |   |   |   |   |   |   |   |   |   |   |   |
| 8002    | 16  | #6   | 2'-5"        | 2    | 1'-4" | 1'-1" |       |       |       |       |       |       |       |   |   |   |   |   |   |   |   |   |   |   |   |   |   |   |   |   |



**AREA KEY PLAN**  
REF: S101A (DT.04/14/22)  
SCALE: 1/10" = 1'-10"

**ALL BARS IN THIS DRAWING  
ASTM A615 GRADE 60  
BLACK UNCOATED**

| LOCATION       | MIN. COVER |
|----------------|------------|
| FOOTING BOTTOM | 3" CLR     |
| FOOTING SIDE   | 3" CLR     |

| CLASS B 4,000 psi UNO | ABBREVIATIONS   | BAR MARK SIZE EQUIVALENT   |
|-----------------------|---|--|
| TOP BARS              | ADD. = Additional   | Imperial<br><b>#3 #10</b><br>Soft Metric<br><b>#4 #13</b><br><b>#5 #16</b><br><b>#6 #19</b><br><b>#7 #22</b><br><b>#8 #25</b><br><b>#9 #29</b><br><b>#10 #32</b><br><b>#11 #36</b> |
| OTHER BARS            | B.O.W. = Bottom of wall<br>C.B. = Corner Bars<br>DIAG. = Diagonal<br>D.O. = Door Opening<br>DWLS. = Dowels<br>E.F. = Each Face<br>E.S. = Each Side<br>E.W. = Each Way<br>FTG. = Footing<br>F.F. = Far Face<br>HORIZ. = Horizontal<br>I.F. = Inside Face<br>INTERS. = Intersection<br>L.W. = Long Way<br>L.V. = Long Way<br>N.F. = Near Face<br>O.F. = Outside Face<br>S.W. = Short Way<br>T&B = Top & Bottom<br>T.O.W. = Top of Wall<br>TRANS. = Transverse<br>VERT. = Vertical |  |

**FOOD BANK OF DELAWARE**  
AREA -B SPREAD FOOTING AND PIER REINFORCEMENT DETAILS  
**MILFORD, DE 19963**

CUSTOMER: -  
DESIGNER: -

|        |          |          |          |                      |      |          |
|--------|----------|----------|----------|----------------------|------|----------|
| REV NO | 05.23.22 | APPROVAL | SENT FOR | REV NO               | DATE | SENT FOR |
|        | RS/SS    | 05.23.22 | JOB NO - | SHEET NO. <b>R10</b> |      |          |