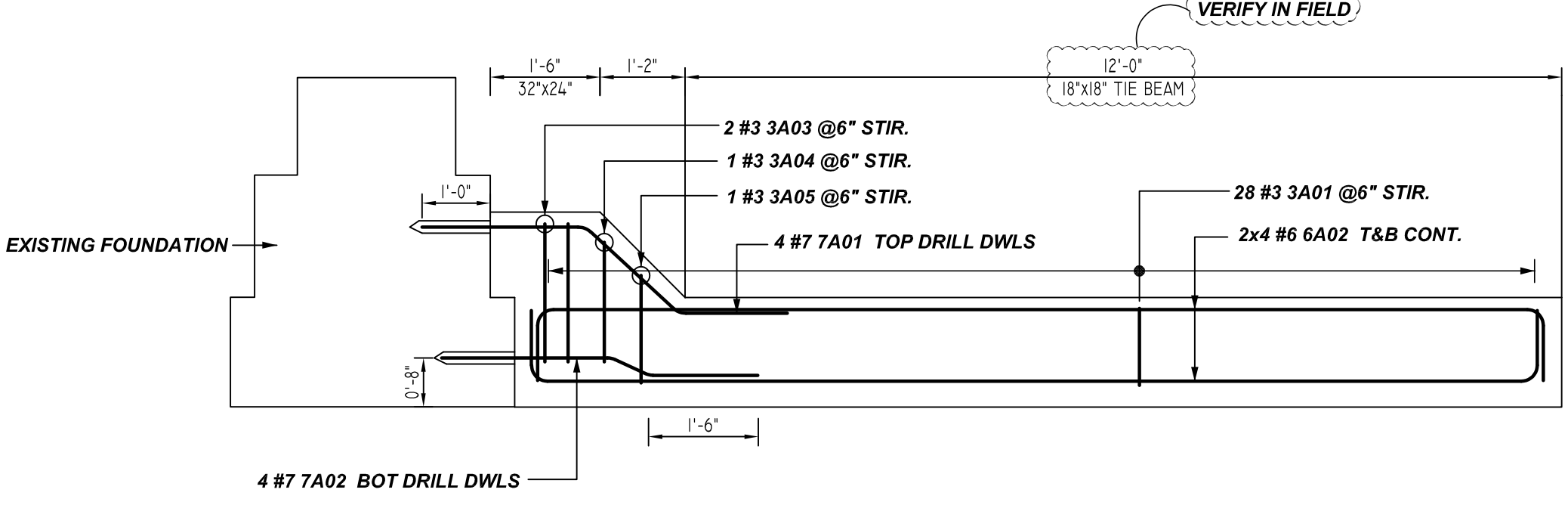
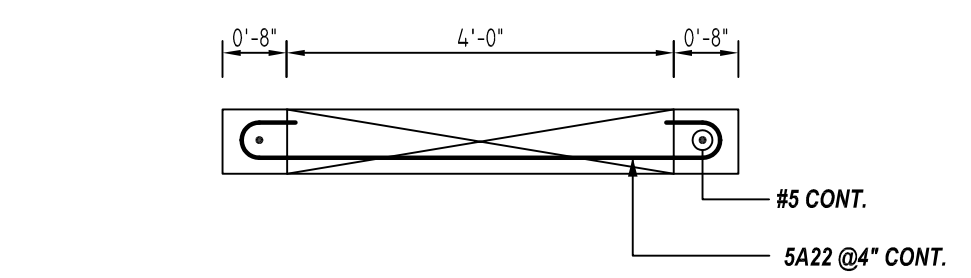


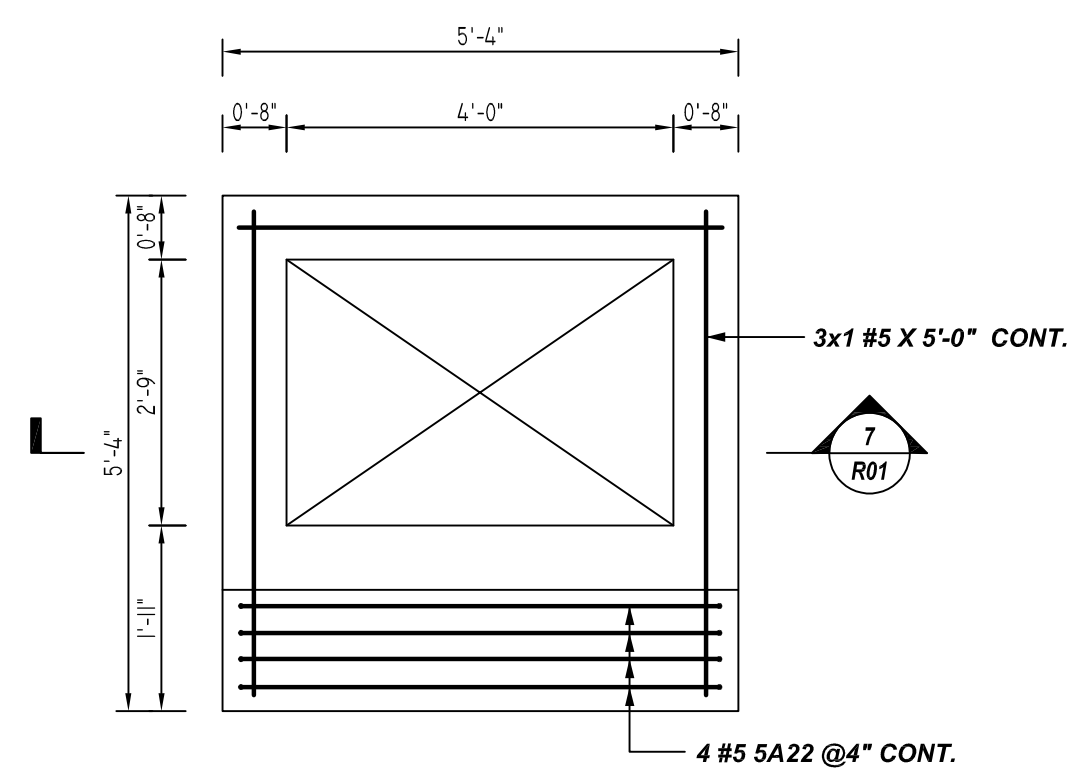
**CANOPY EXTENSION DETAILS 2**  
REF:7/SS-3  
SCALE: 1/2" = 1'-0"



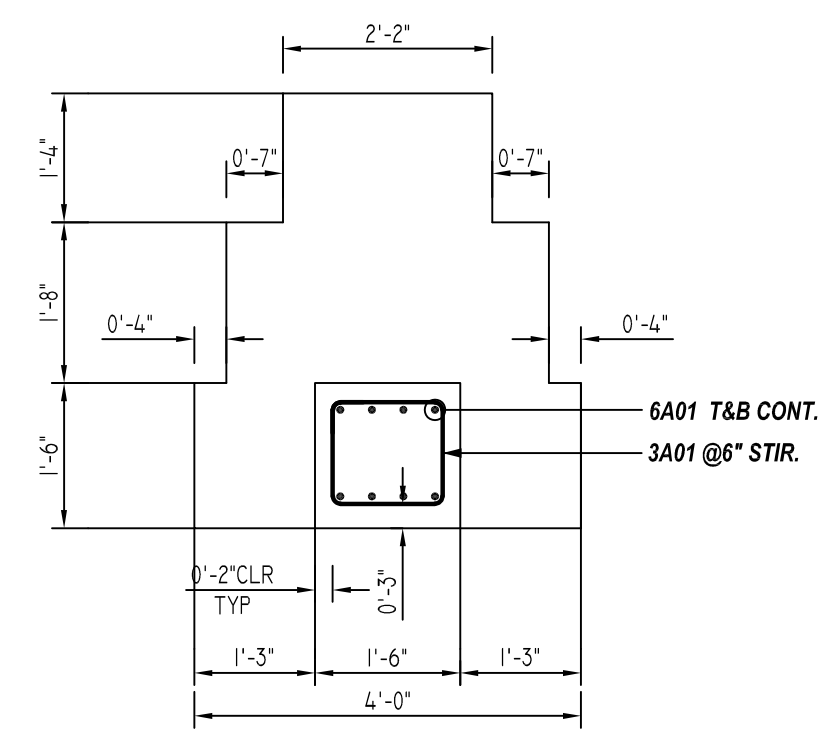
**CANOPY EXTENSION DETAILS 2**  
REF:6/SS-3  
SCALE: 1/2" = 1'-0"



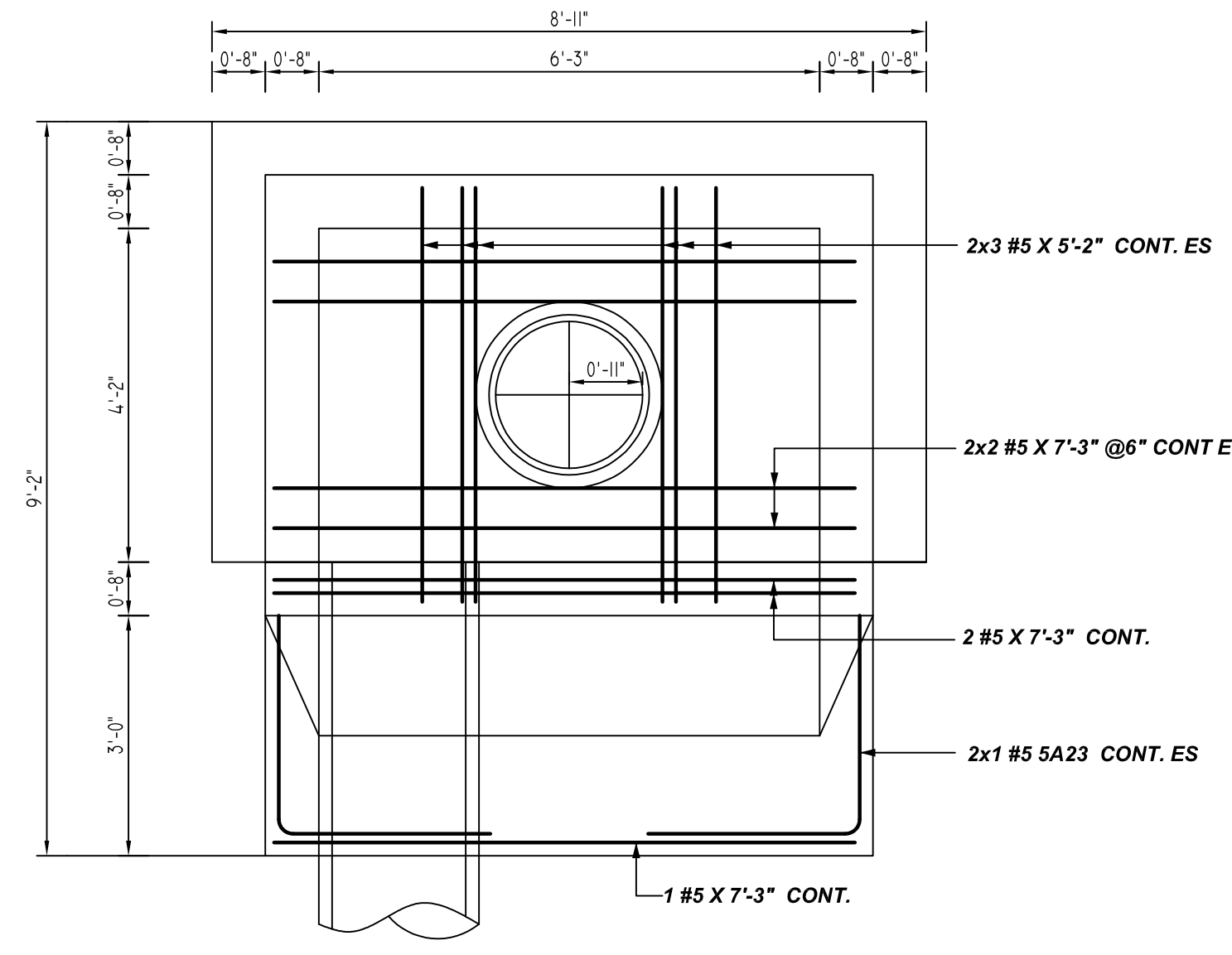
**7 SECTION**  
R-01 REF:B-B/CU-5  
SCALE: 1/2" = 1'-0"



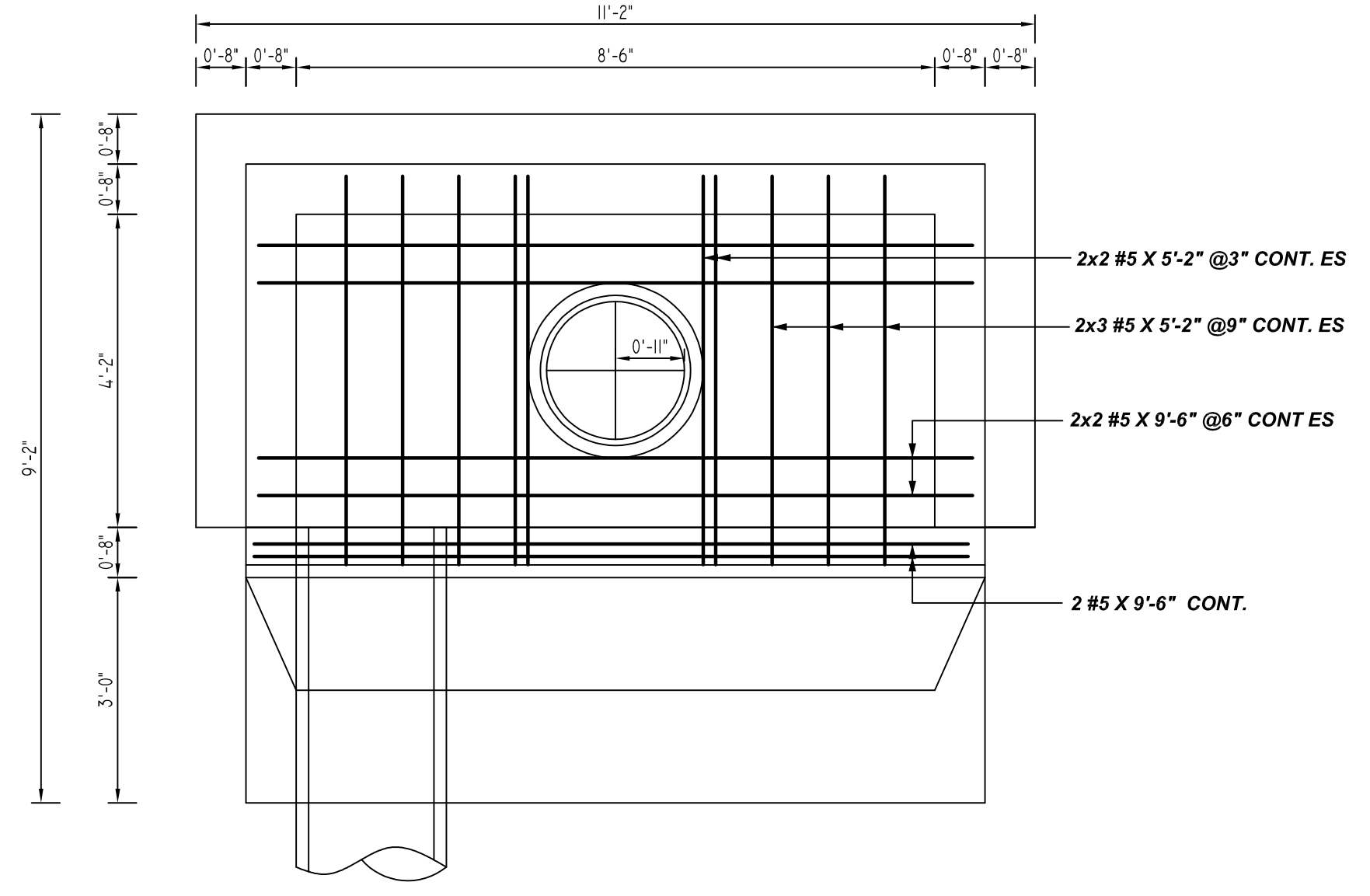
**CATCH BASIN SURFACE INLET**  
REF:CU-5  
SCALE: 1/2" = 1'-0"



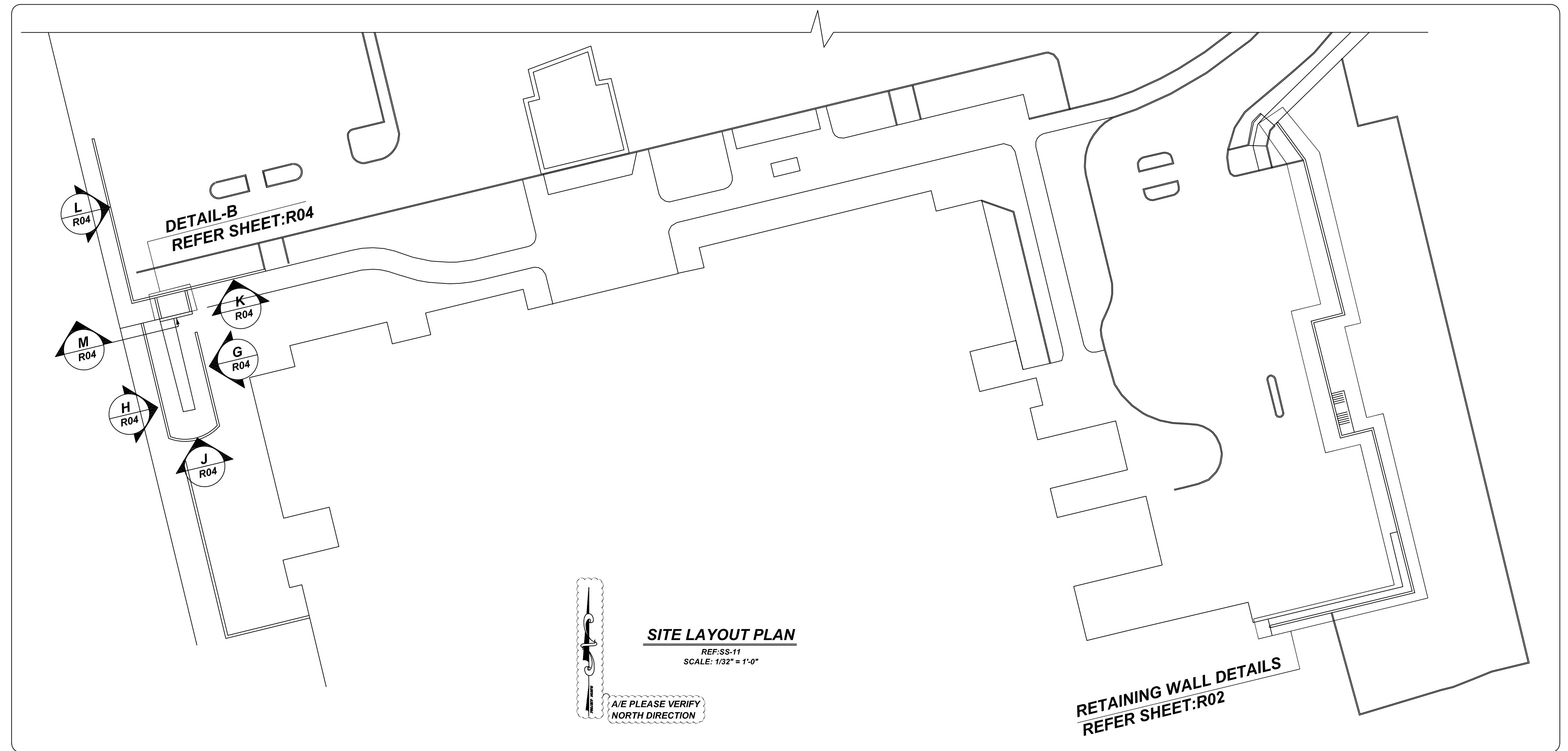
**6 SECTION**  
R-01 REF:B/SS3 (DT.mm/dd/yy)  
SCALE: 1/2" = 1'-0"



**CATCH BASIN - CURB INLET W/ SOLID COVER**  
REF:CU4  
SCALE: 1/2" = 1'-0"

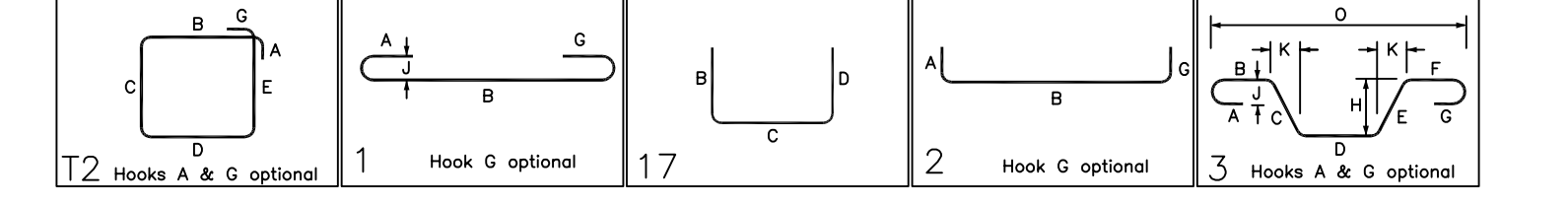


**DOUBLE CATCH BASIN - CURB INLET W/ SOLID COVER**  
REF:CU4  
SCALE: 1/2" = 1'-0"



**SITE LAYOUT PLAN**  
REF:SS-11  
SCALE: 1/32" = 1'-0"

Bar Mark	Qty	Size	Total Length	Type	X'	Y'	Z'	W'	V'	U'	T'	S'	R'	Q'	P'	O'	N'	M'	L'	K'	J'	I'	H'	G'	F'	E'	D'	C'	B'	A'
3A01	60	#3	5'-2"	T2	0'-4"	1'-2"	1'-1"	1'-2"	1'-1"	1'-1"	1'-1"	0'-4"																		
3A02	5	#3	8'-0"	T2	0'-4"	1'-10"	1'-10"	1'-10"	1'-10"	0'-4"																				
3A03	2	#3	7'-10"	T2	0'-4"	1'-11"	1'-8"	1'-11"	1'-8"	0'-4"																				
3A04	1	#3	7'-4"	T2	0'-4"	1'-8"	1'-8"	1'-8"	1'-8"	0'-4"																				
3A05	1	#3	7'-0"	T2	0'-4"	1'-8"	1'-8"	1'-8"	1'-8"	0'-4"																				
5A22	4	#5	6'-6"	1	0'-9"	5'-0"				0'-9"																				
5A23	2	#5	5'-5"	17	2'-8"	2'-9"																								
6A01	8	#6	19'-6"	2	1'-0"	17'-6"				1'-0"																				
6A02	8	#6	15'-10"	2	1'-0"	13'-10"				1'-0"																				
7A01	4	#7	5'-6"	3	2'-4"	1'-9"	1'-9"	1'-9"	1'-9"		1'-3"																			
7A02	4	#7	4'-4"	3	2'-4"	0'-4"	1'-6"			0'-3"																				
9A01	8	#9	5'-6"	2	1'-7"	3'-11"																								



**LAP SCHEDULE**  
5000 PSI (CLASS-B) CASE - 1  
Per ACI 318 (12.2.2)

BAR#	LENGTHS	
	TOP	OTHERS
#3	1'-9"	1'-9"
#4	2'-6"	2'-0"
#5	3'-11"	3'-1"
#6	5'-7"	4'-3"
#7	7'-6"	5'-9"
#8	9'-11"	7'-7"
#9	12'-6"	9'-8"
#10	15'-10"	12'-2"
#11	19'-5"	15'-0"

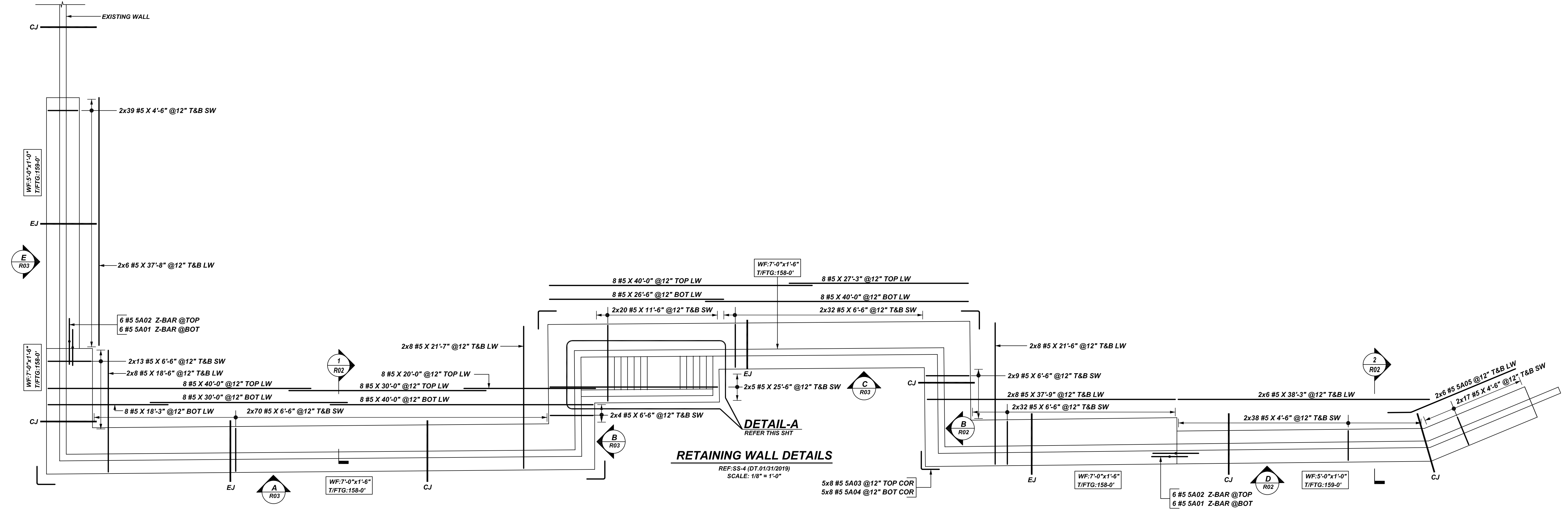
ALL TOP BARS ARE DEFINED AS HORIZ BARS WITH MORE THAN 12" OF CONCRETE BELOW BARS.

FOR APPROVAL

TYPICAL REINFORCING BAR CLEARANCE TABLE	
LOCATION	MIN. COVER
BEAM BOT	3" CLR
BEAM TOP & SIDE	2" CLR

**ALL BARS IN THIS DRAWING  
ASTM A615 GRADE 60  
BLACK UNCOATED**

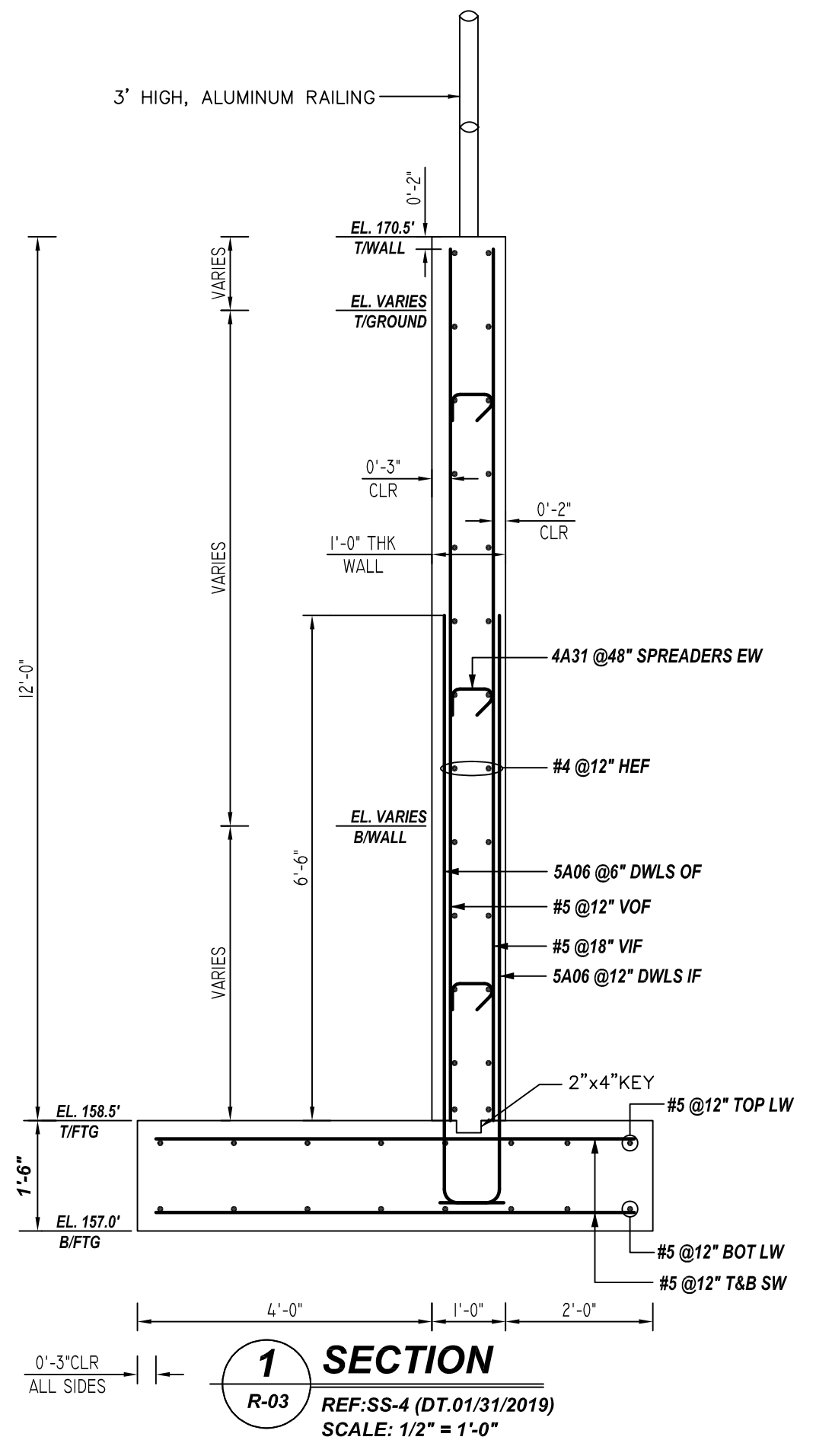
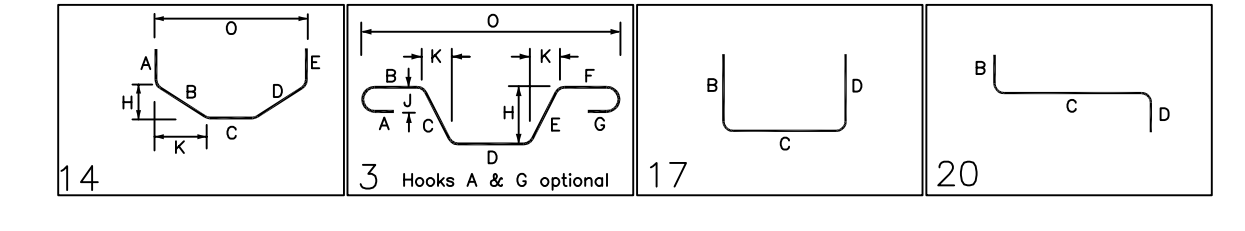
GRADE	A615/60 (UNO)		
PREFIX	A		
BAR LIST NOS.	-		
REV	DESCRIPTION	ISSUED DATE	ISSUED FOR
0	IFA	09/09/2022	APPROVAL
STRUCTURE	SITE RETAINING WALLS REINFORCEMENT DETAILS		
FLOOR	FOUNDATION LEVEL		
JOB NO	-		
CUSTOMER	EXTECH BUILDING		
JOB	RENOVATE ROADS PROJECT 4		
LOCATION	NORTHPORT, N.Y. 11768		
DRAWN	DATE	CONTROL CODE	DWG. NO.
MRS	09/09/2022	-	R01



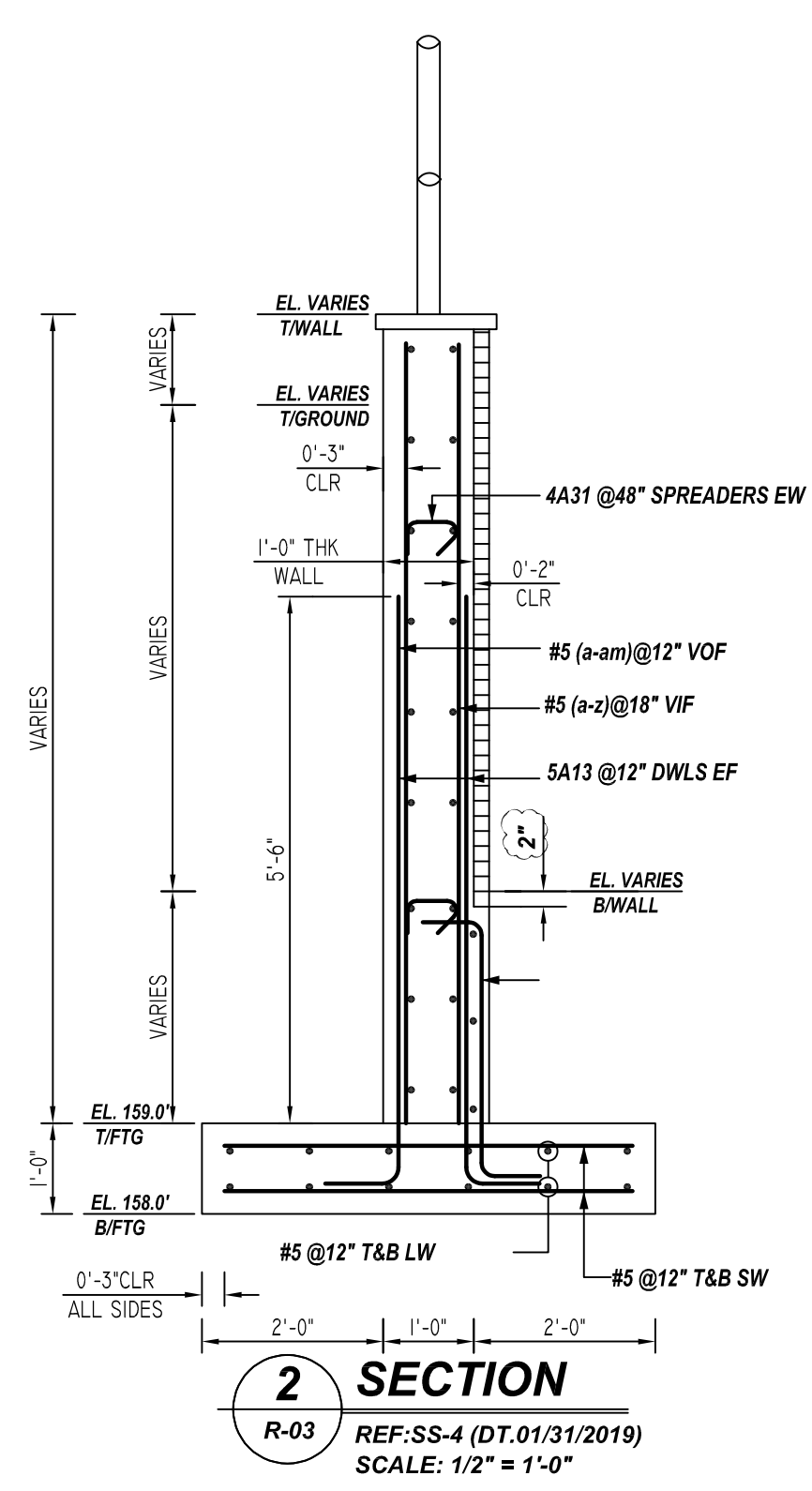
**REINFORCING WALL DETAILS**  
 REF: SS-4 (DT.01/31/2019)  
 SCALE: 1/8" = 1'-0"

Release Number: R02

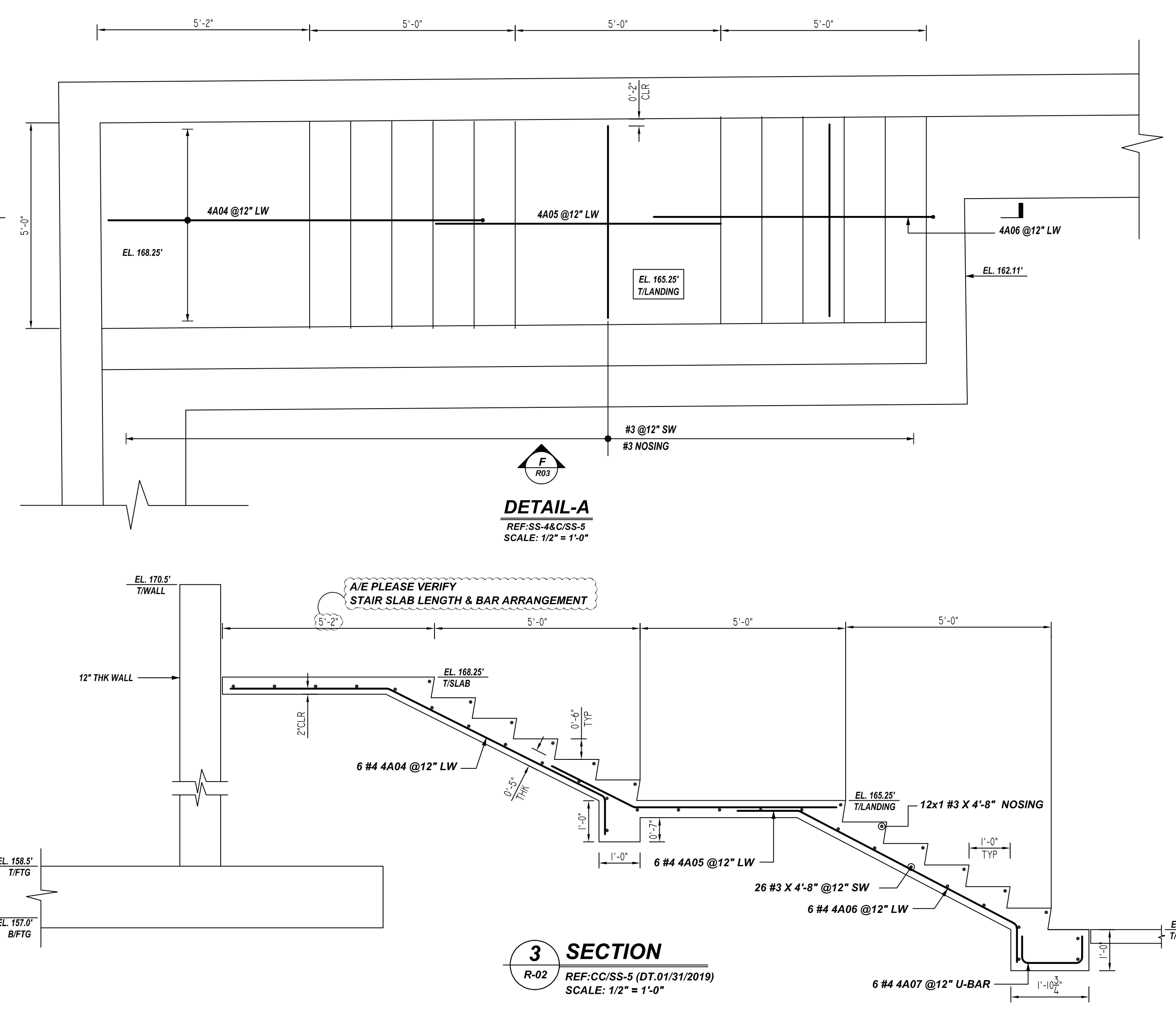
Bar Mark	Qty	Size	Total Length	Type	X	Y	Z	V	W	T	U	V	W	X	Y
4A04	6	#4	10'-8"	14	0'-11"	5'-11"	3'-10"							2'-7"	9'-1"
4A05	6	#4	7'-1"	3	4'-11"	2'-2"							1'-0"	1'-11"	
4A06	6	#4	8'-4"	14	0'-11"	5'-11"	1'-6"						2'-9"	5'-3"	
4A07	6	#4	2'-10"	17	0'-5"	1'-6"	0'-4"							6'-9"	
5A01	12	#5	7'-4"	20	2'-3"	1'-5"	2'-2"							6'-9"	
5A02	12	#5	8'-4"	20	3'-4"	1'-0"	3'-5"							6'-9"	
5A03	40	#5	7'-6"	17	3'-4"	3'-4"								6'-9"	
5A04	40	#5	5'-6"	17	2'-9"	2'-9"							1'-4"	20'-5"	
5A05	12	#5	20'-8"	3	17'-3"	3'-5"							1'-4"	20'-5"	



**1 SECTION**  
 R-03 REF: SS-4 (DT.01/31/2019)  
 SCALE: 1/2" = 1'-0"



**2 SECTION**  
 R-03 REF: SS-4 (DT.01/31/2019)  
 SCALE: 1/2" = 1'-0"



**3 SECTION**  
 R-02 REF: CC/SS-5 (DT.01/31/2019)  
 SCALE: 1/2" = 1'-0"

**LAP SCHEDULE**

5000 PSI (CLASS-B) CASE - 1  
 Per ACI:318 (12.2.2)

BAR#	LENGTHS	
	TOP	OTHERS
#3	1'-9"	1'-9"
#4	2'-6"	2'-0"
#5	3'-11"	3'-1"
#6	5'-7"	4'-3"
#7	7'-6"	5'-9"
#8	9'-11"	7'-7"
#9	12'-6"	9'-8"
#10	15'-10"	12'-2"
#11	19'-5"	15'-0"

ALL TOP BARS ARE DEFINED AS HORIZ BARS WITH MORE THAN 12" OF CONCRETE BELOW BARS.

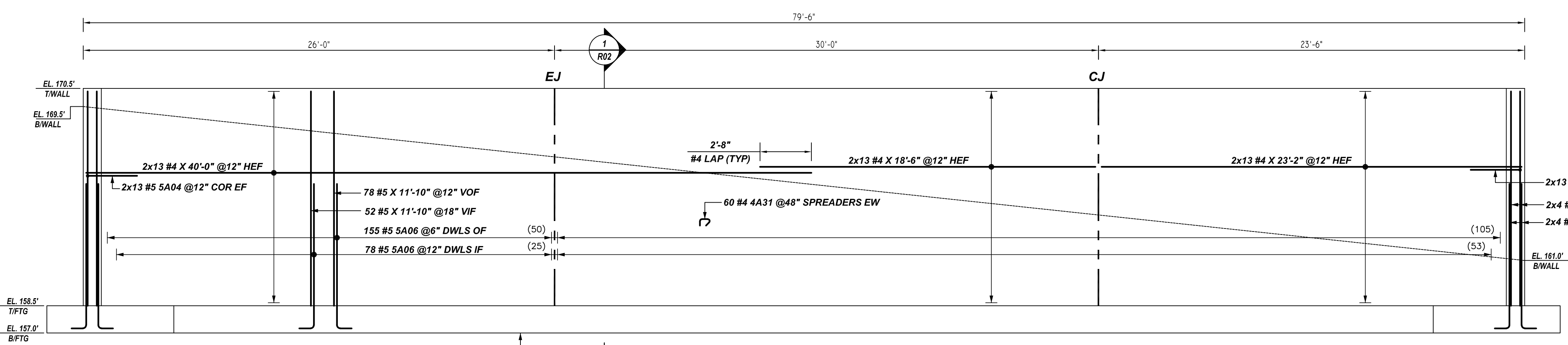
FOR APPROVAL

TYPICAL REINFORCING BAR CLEARANCE TABLE

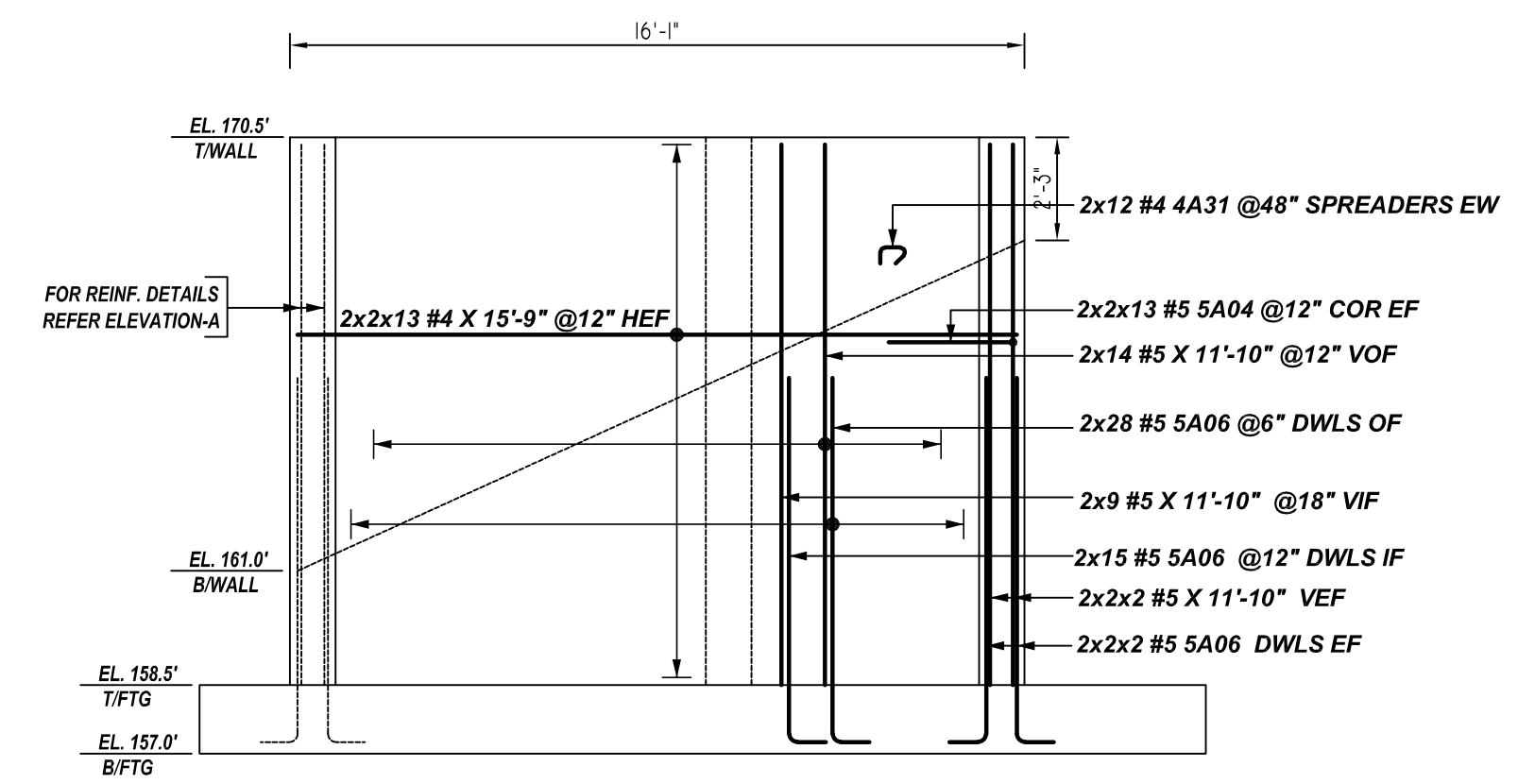
LOCATION	MIN. COVER
FOOTINGS BOT, TOP & SIDES	3" CLR

**ALL BARS IN THIS DRAWING**  
**ASTM A615 GRADE 60**  
**BLACK UNCOATED**

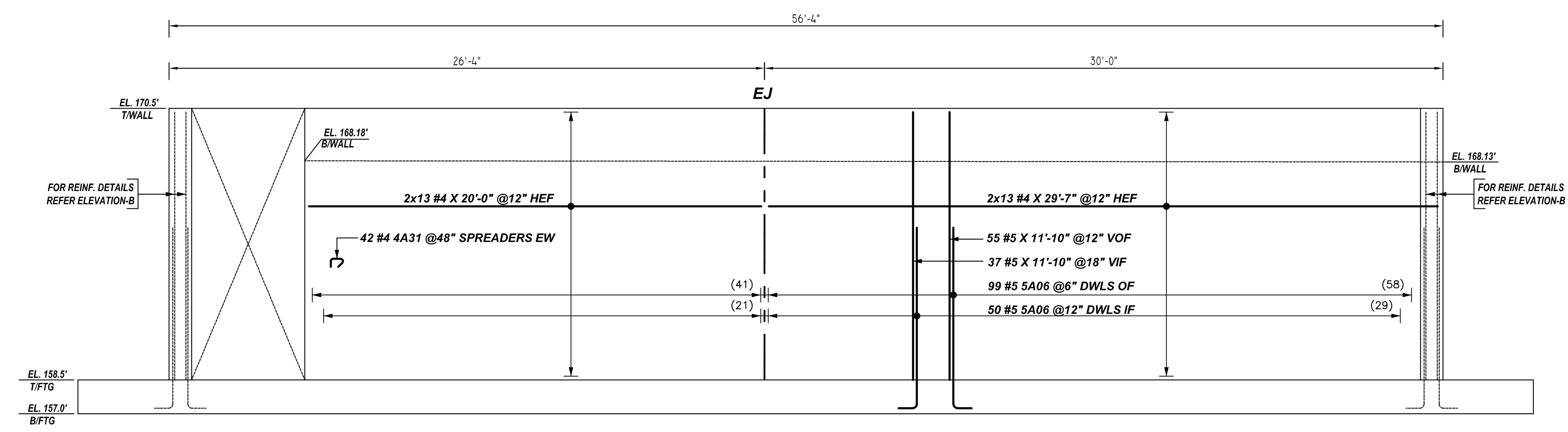
GRADE	A615/60 (UNO)	STRUCTURE	SITE RETAINING WALLS REINFORCEMENT DETAILS
PREFIX	A	FLOOR	FOUNDATION LEVEL
BAR LIST NOS.	--	JOB NO	--
REV	DESCRIPTION	ISSUED DATE	ISSUED FOR
0	IFA	09/09/2022	APPROVAL
CUSTOMER	EXTECH BUILDING		
JOB	RENOVATE ROADS PROJECT 4		
LOCATION	NORTHPORT, N.Y. 11768		
DRAWN	DATE	CONTROL CODE	DWG. NO.
MRS	09/09/2022	--	R02



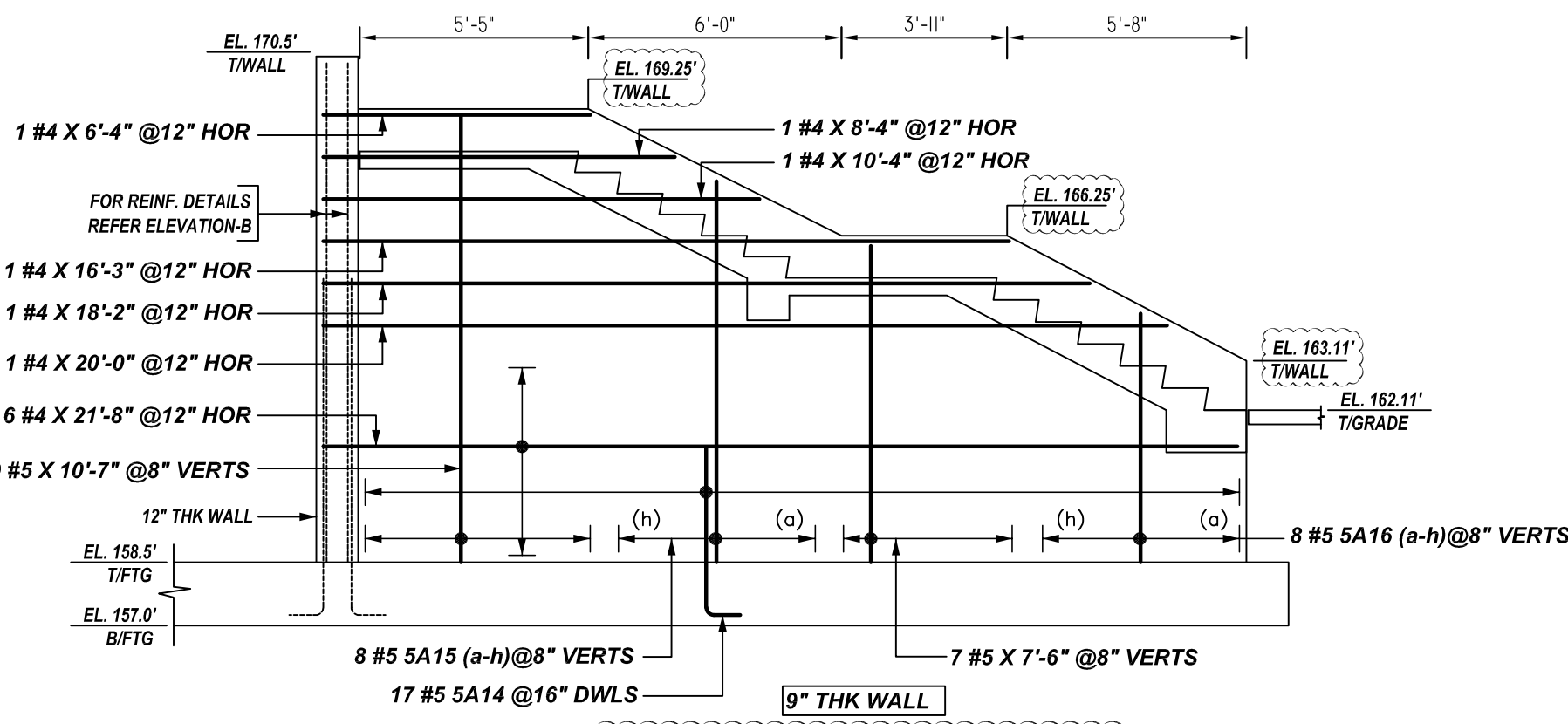
**A ELEVATION**  
 REF:SS-4 (DT.01/31/2019)  
 SCALE: 1/4" = 1'-0"



**B ELEVATION**  
 REF:SS-4 (DT.01/31/2019)  
 SCALE: 1/4" = 1'-0"  
 (@2 LOCATIONS)



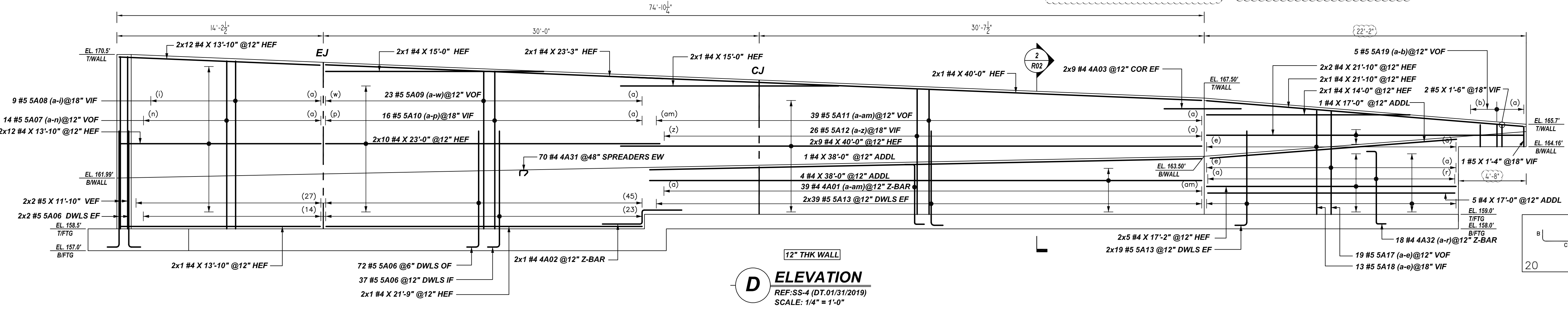
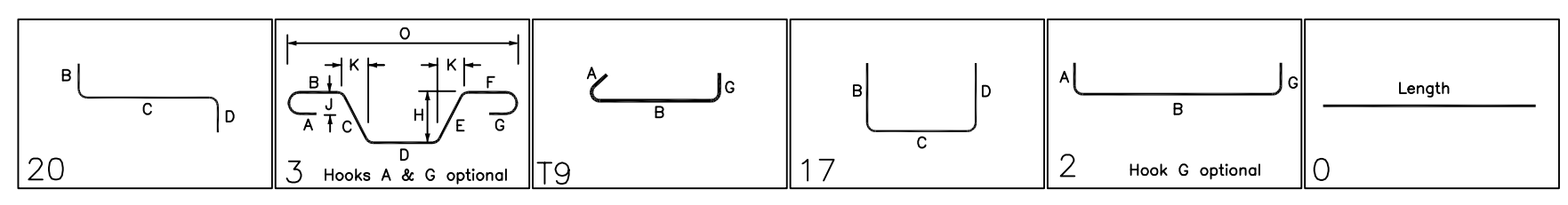
**C ELEVATION**  
 REF:SS-4 (DT.01/31/2019)  
 SCALE: 1/4" = 1'-0"



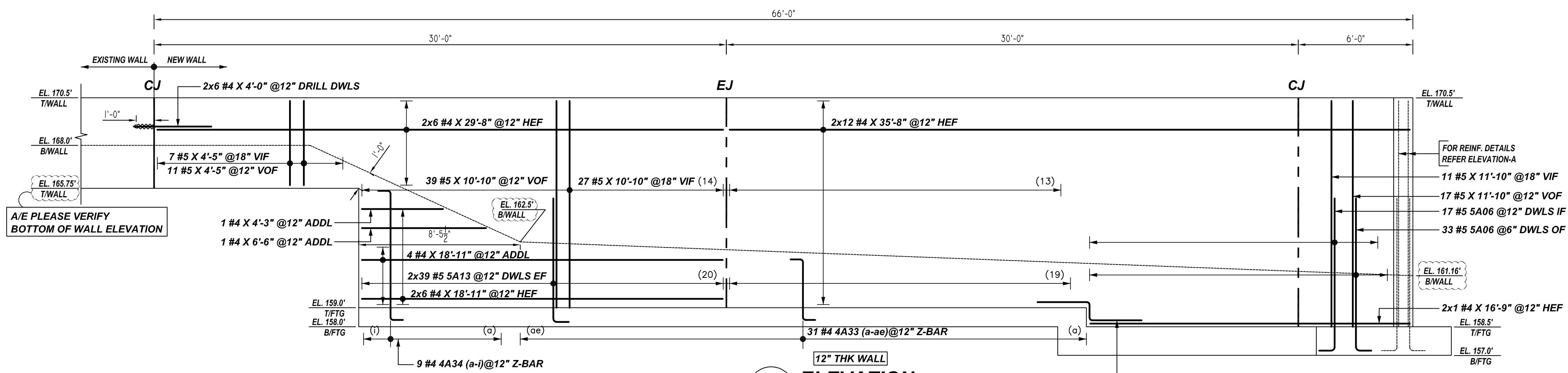
**F ELEVATION**  
 REF:SS-4 & A/SS5 (DT.01/31/2019)  
 SCALE: 1/4" = 1'-0"

A/E PLEASE VERIFY WALL PROFILE & BAR ARRANGEMENT (TYP.) WE HAVE DETAILED VERTICAL FORMLINER

Bar No.	Qty	Size	Total Length	Type	X	Y	Z	BENDING DETAILS
4A01a	1	#4	5'-11"	20	0'-8"	3'-9"	0'-8"	
4A01m	1	#4	5'-10"	20	0'-8"	4'-6"	0'-8"	
4A02	4	#4	6'-6"	20	2'-9"	1'-0"	2'-9"	
4A03	18	#4	5'-5"	3	2'-9"	2'-8"		
4A01	196	#4	1'-4"	19	0'-4"	0'-7"		
4A33a	1	#4	5'-8"	20	0'-8"	4'-4"	0'-8"	
4A33r	1	#4	7'-0"	20	0'-8"	5'-8"	0'-8"	
4A33s	1	#4	4'-0"	20	0'-8"	2'-8"	0'-8"	
4A33op	1	#4	5'-1"	20	0'-8"	3'-9"	0'-8"	
4A33a	1	#4	5'-7"	20	0'-8"	4'-3"	0'-8"	
4A34	1	#4	8'-10"	20	0'-8"	7'-6"	0'-8"	
5A04	104	#5	5'-6"	17	2'-9"	2'-9"		
5A06	647	#5	8'-10"	2	0'-10"	8'-0"		
5A07a	1	#5	11'-3"		11'-3"			
5A07b	1	#5	11'-9"		11'-9"			
5A08a	1	#5	11'-3"		11'-3"			
5A08b	1	#5	10'-11"		10'-11"			
5A09	1	#5	11'-9"		11'-9"			
5A09a	1	#5	10'-11"		10'-11"			
5A09b	1	#5	11'-3"		11'-3"			
5A10a	1	#5	10'-11"		10'-11"			
5A10b	1	#5	11'-3"		11'-3"			
5A11a	1	#5	9'-3"		9'-3"			
5A11m	1	#5	9'-4"		9'-4"			
5A12a	1	#5	9'-3"		9'-3"			
5A12b	1	#5	9'-4"		9'-4"			
5A13	194	#5	7'-4"	2	0'-10"	6'-6"		
5A14	17	#5	4'-10"	2	0'-10"	4'-0"		
5A15a	1	#5	7'-10"		7'-10"			
5A15b	1	#5	10'-2"		10'-2"			
5A16a	1	#5	4'-8"		4'-8"			
5A16b	3	#5	7'-1"		7'-1"			
5A16c	3	#5	6'-5"		6'-5"			
5A16d	1	#5	7'-9"		7'-9"			
5A16e	1	#5	1'-8"		1'-8"			



**D ELEVATION**  
 REF:SS-4 (DT.01/31/2019)  
 SCALE: 1/4" = 1'-0"



**E ELEVATION**  
 REF:SS-4 (DT.01/31/2019)  
 SCALE: 1/4" = 1'-0"

**LAP SCHEDULE**  
 5000 PSI (CLASS-B) CASE - 1  
 Per ACI :318 (12.2.2)

BAR#	LENGTHS	
	TOP	OTHERS
#3	1'-9"	1'-9"
#4	2'-6"	2'-0"
#5	3'-11"	3'-1"
#6	5'-7"	4'-3"
#7	7'-6"	5'-9"
#8	9'-11"	7'-7"
#9	12'-6"	9'-8"
#10	15'-10"	12'-2"
#11	19'-5"	15'-0"

ALL TOP BARS ARE DEFINED AS HORIZ BARS WITH MORE THAN 12" OF CONCRETE BELOW BARS.

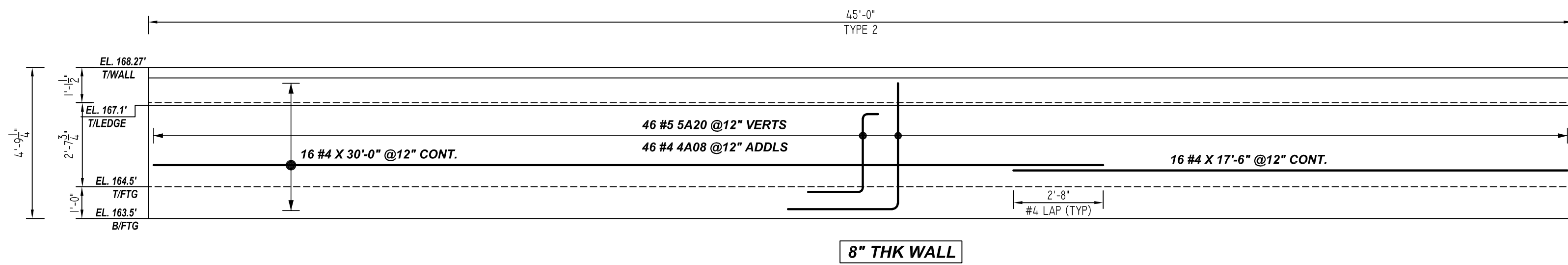
FOR APPROVAL

TYPICAL REINFORCING BAR CLEARANCE TABLE

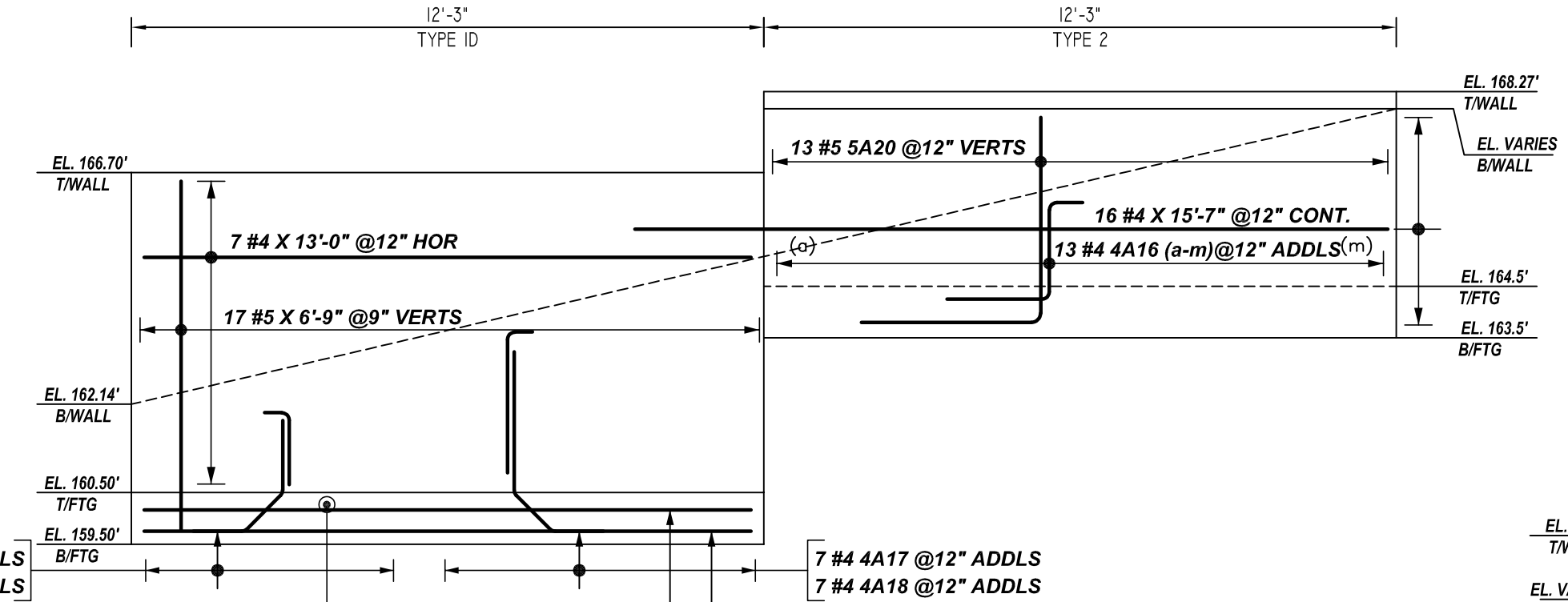
LOCATION	MIN. COVER
WALL TOP	2" CLR
WALL OUTER FACE	3" CLR
WALL INNER FACE	2" CLR

ALL BARS IN THIS DRAWING  
 ASTM A615 GRADE 60  
 BLACK UNCOATED

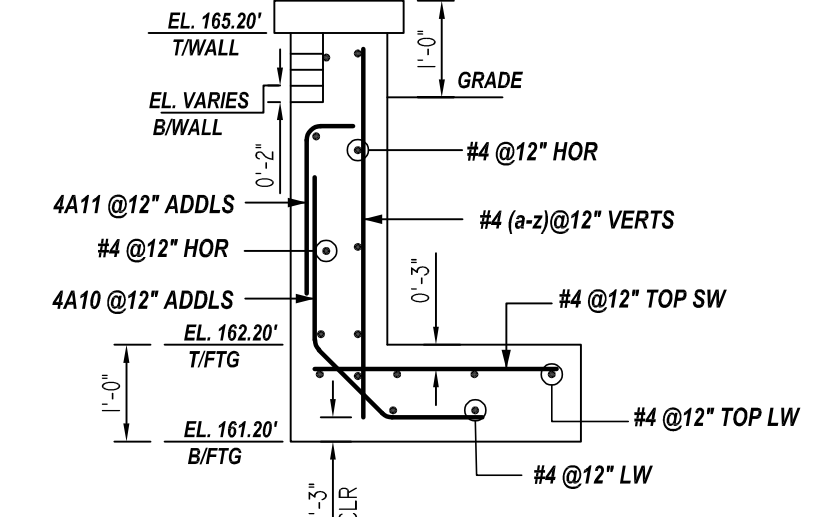
GRADE	A615/60 (UNO)		
PREFIX	A		
BAR LIST NOS.	-		
REV	DESCRIPTION	ISSUED DATE	ISSUED FOR
0	IFA	09/09/2022	APPROVAL
STRUCTURE	SITE RETAINING WALLS REINFORCEMENT DETAILS		
FLOOR	FOUNDATION LEVEL		
JOB NO	-		
CUSTOMER	EXTTECH BUILDING		
JOB	RENOVATE ROADS PROJECT 4		
LOCATION	NORTHPORT, N.Y. 11768		
DRAWN	DATE	CONTROL CODE	DWG. NO.
MRS	09/09/2022	-	R03



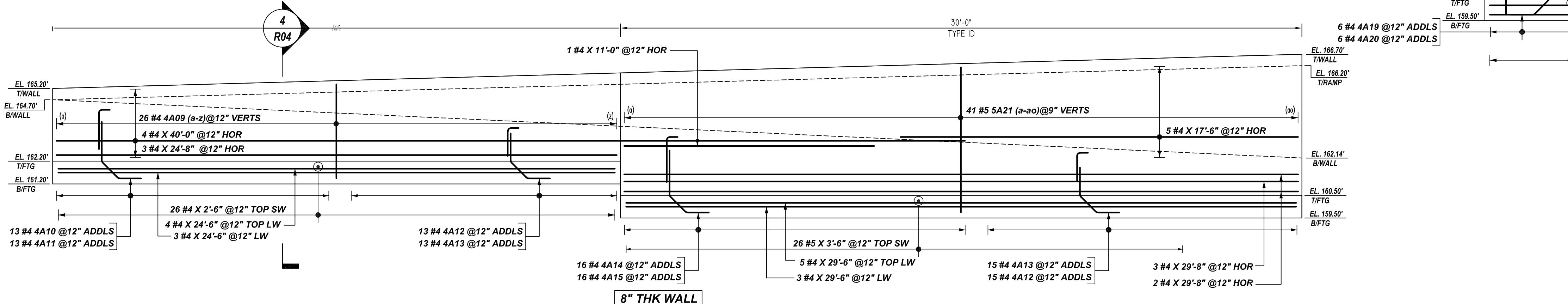
**G ELEVATION**  
 REF:SS-6 (DT.01/31/2019)  
 SCALE: 1/3" = 1'-0"



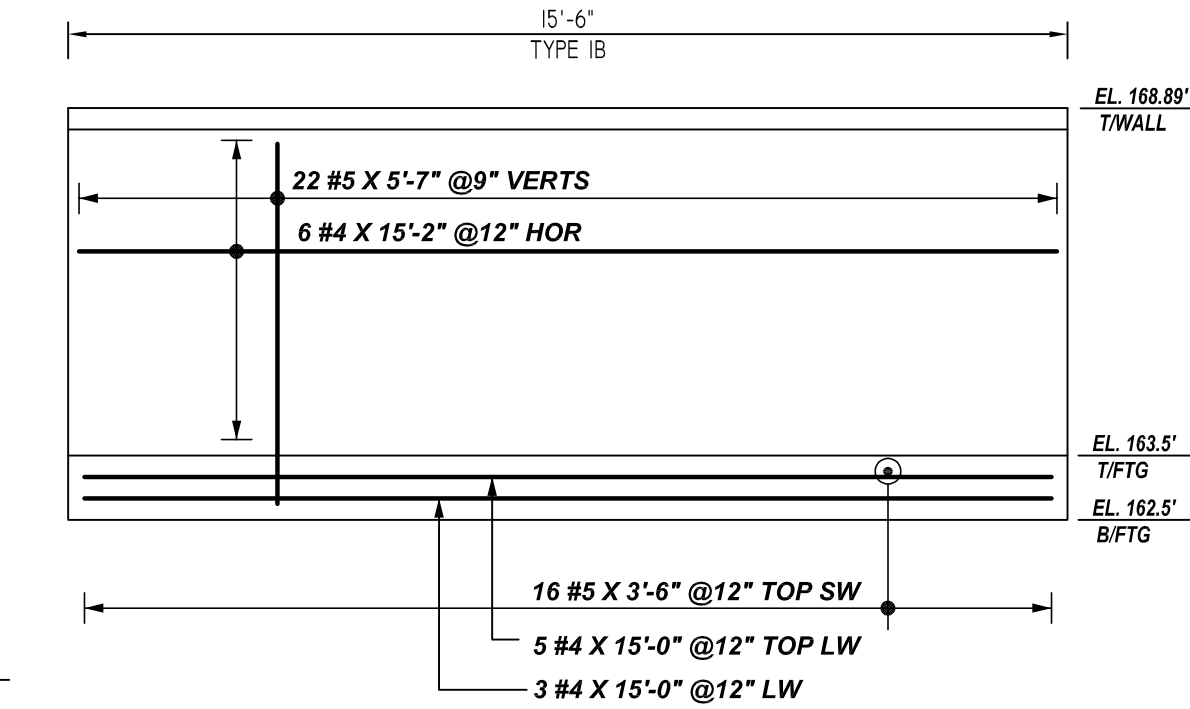
**J ELEVATION**  
 REF:SS-6 (DT.01/31/2019)  
 SCALE: 1/3" = 1'-0"



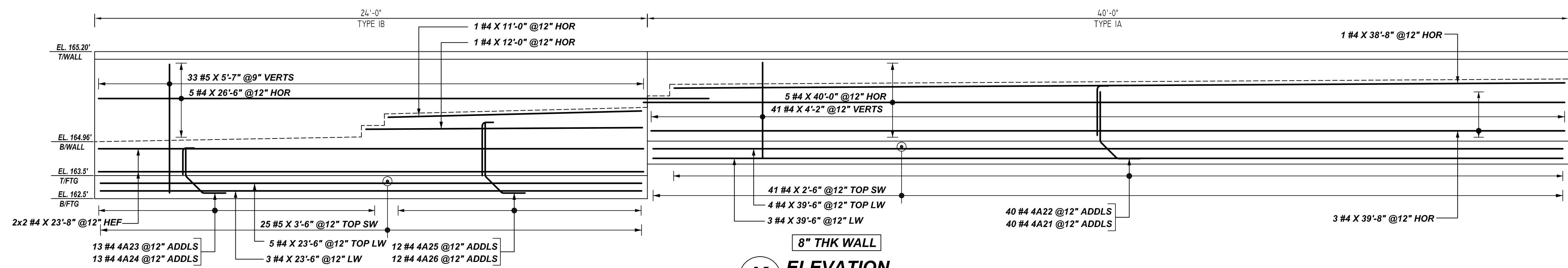
**4 SECTION**  
 R-04 REF:SS7 (DT.nmm/dd/yyyy)  
 SCALE: 1/2" = 1'-0"



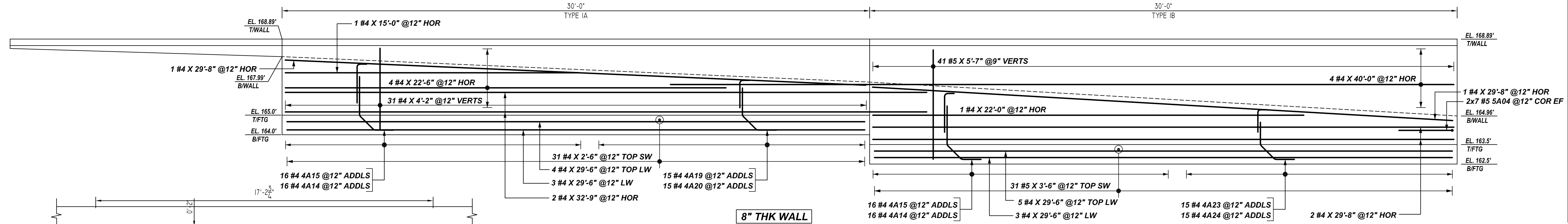
**H ELEVATION**  
 REF:SS-6 (DT.01/31/2019)  
 SCALE: 1/3" = 1'-0"



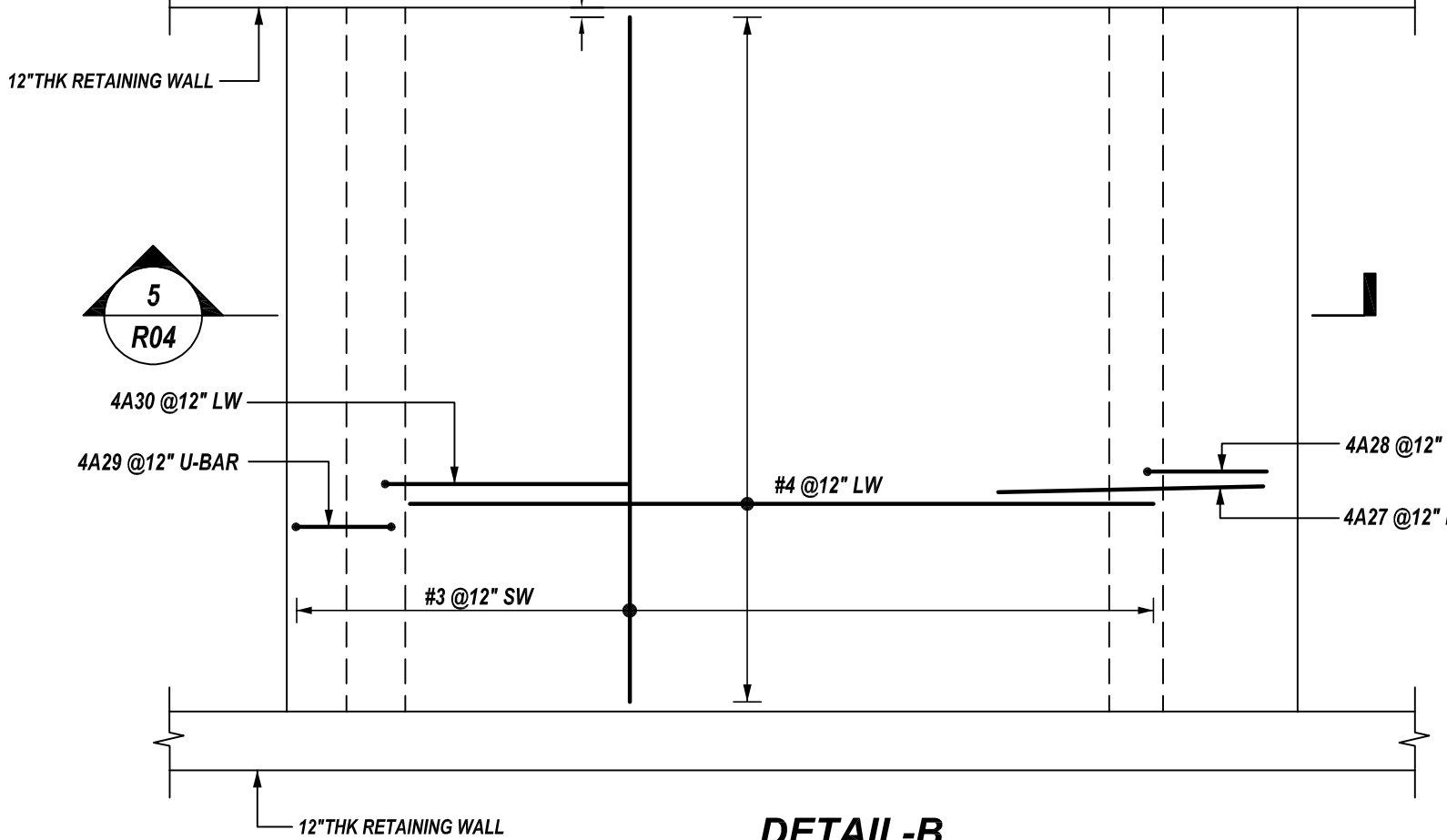
**M ELEVATION**  
 REF:SS-6 (DT.01/31/2019)  
 SCALE: 1/3" = 1'-0"



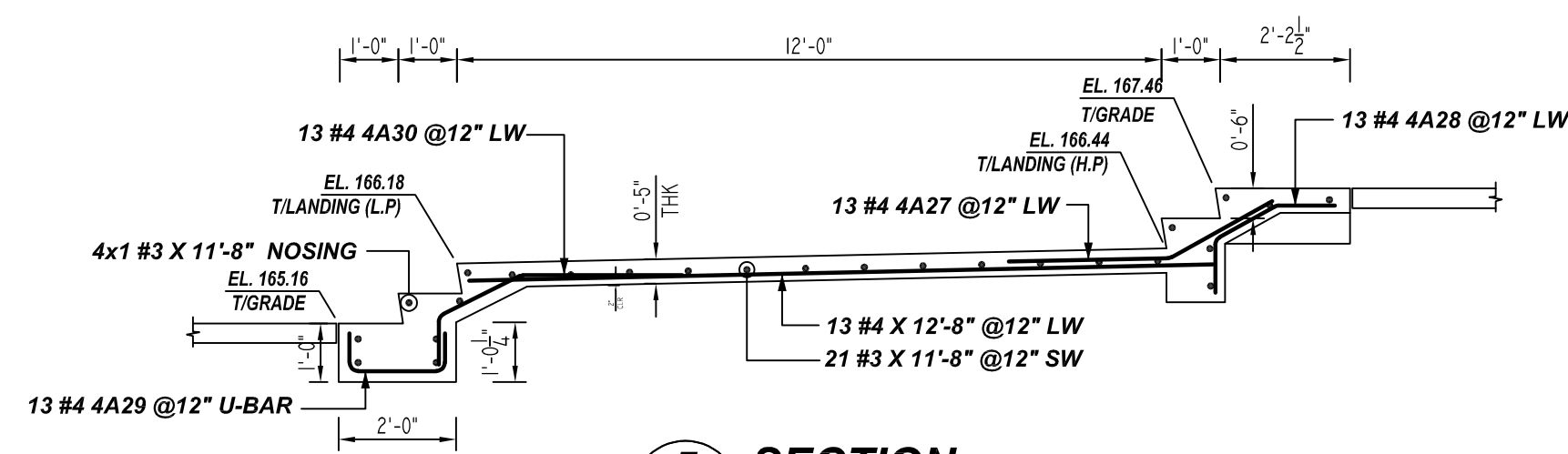
**K ELEVATION**  
 REF:SS-6 (DT.01/31/2019)  
 SCALE: 1/3" = 1'-0"



**L ELEVATION**  
 REF:SS-6 (DT.01/31/2019)  
 SCALE: 1/3" = 1'-0"



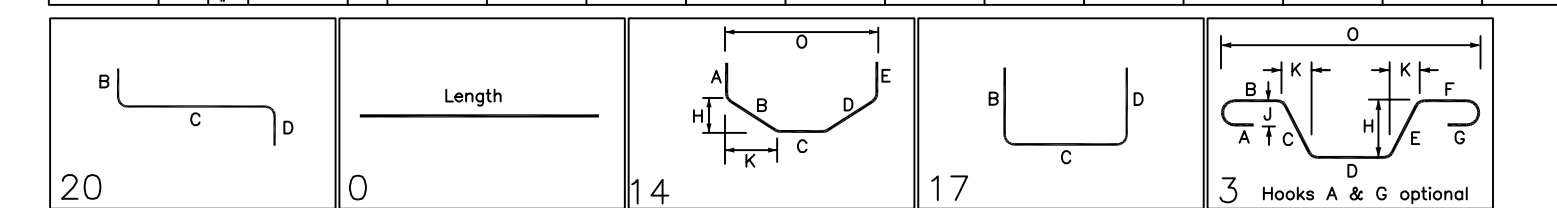
**DETAIL-B**  
 REF:SS-7(DT.01/31/2019)  
 SCALE: 1/3" = 1'-0"



**5 SECTION**  
 R-04 REF:SS7  
 SCALE: 1/2" = 1'-0"

Rebar Schedule: R04

Bar Mark	Qty	Size	Total Length	Type	X	Y	Z	BENDING DETAILS
4A08	46	#4	4'-9"	20	1'-0"	1'-0"	2'-6"	0'-6"
4A09	1	#4	4'-3"	20	4'-3"	4'-3"		
Varies To								
4A09	1	#4	4'-6"		4'-6"			
4A10	13	#4	3'-9"	14	1'-0"	1'-0"	1'-9"	1'-9"
4A11	13	#4	2'-3"	17			0'-6"	1'-9"
4A12	28	#4	3'-3"	14	1'-0"	1'-0"	1'-9"	1'-9"
4A13	28	#4	1'-9"	17			0'-6"	1'-3"
4A14	48	#4	2'-4"	17			0'-6"	2'-0"
4A15	48	#4	4'-0"	14	1'-0"	1'-0"	2'-0"	2'-0"
4A16	1	#4	3'-2"	20	0'-8"	0'-8"	2'-0"	
Varies To								
4A16a	1	#4	5'-11"	20			0'-6"	3'-3"
4A17	7	#4	4'-9"	14	1'-0"	1'-0"	2'-9"	2'-9"
4A18	7	#4	3'-3"	17			0'-6"	2'-9"
4A19	21	#4	3'-5"	14	1'-0"	1'-0"	1'-5"	1'-5"
4A20	21	#4	1'-11"	17			0'-6"	1'-5"
4A21	40	#4	4'-2"	14	1'-0"	1'-0"	2'-2"	2'-2"
4A22	40	#4	2'-8"	17			0'-6"	2'-2"
4A23	28	#4	3'-2"	14	1'-0"	1'-0"	1'-2"	1'-2"
4A24	28	#4	1'-9"	17			0'-6"	1'-2"
4A25	12	#4	4'-4"	14	1'-0"	1'-0"	2'-4"	2'-4"
4A26	12	#4	2'-10"	17			0'-6"	2'-4"
4A27	13	#4	4'-8"	3	2'-9"	1'-11"	1'-0"	1'-0"
4A28	13	#4	3'-1"	14	0'-11"	1'-2"	1'-0"	1'-0"
4A29	13	#4	3'-0"	17			0'-6"	1'-8"
4A30	13	#4	5'-2"	14	0'-10"	1'-2"	2'-9"	2'-9"
5A04	14	#5	5'-4"	17			2'-9"	2'-9"
5A05	58	#5	7'-4"	17			3'-4"	4'-0"
5A06	1	#5	6'-4"		6'-4"			
Varies To								
5A20a	1	#5	6'-9"		6'-9"			



**LAP SCHEDULE**  
 5000 PSI (CLASS-B) CASE - 1  
 Per ACI 318 (12.2.2)

BAR#	LENGTHS	
	TOP	OTHERS
#3	1'-9"	1'-9"
#4	2'-6"	2'-0"
#5	3'-11"	3'-1"
#6	5'-7"	4'-3"
#7	7'-6"	5'-9"
#8	9'-11"	7'-7"
#9	12'-6"	9'-8"
#10	15'-10"	12'-2"
#11	19'-5"	15'-0"

ALL TOP BARS ARE DEFINED AS HORIZ BARS WITH MORE THAN 12" OF CONCRETE BELOW BARS.

FOR APPROVAL

**TYPICAL REINFORCING BAR CLEARANCE TABLE**

LOCATION	MIN. COVER
FOOTINGS BOT, TOP & SIDES	3" CLR
WALL TOP	2" CLR
WALL SIDES	3" CLR

**ALL BARS IN THIS DRAWING**  
 ASTM A615 GRADE 60  
 BLACK UNCOATED

GRADE	A615/60 (UNO)		
PREFIX	A		
BAR LIST NOS.	-		
REV	DESCRIPTION	ISSUED DATE	ISSUED FOR
0	IFA	09/09/2022	APPROVAL
STRUCTURE	SITE RETAINING WALLS REINFORCEMENT DETAILS		
FLOOR	FOUNDATION LEVEL		
JOB NO.	-		
CUSTOMER	EXTECH BUILDING		
JOB	NORTHPORT, N.Y. 11768		
LOCATION	QUEENS, NY, 11374		
DRAWN	DATE	CONTROL CODE	DWG. NO.
MRS	09/09/2022	-	R04