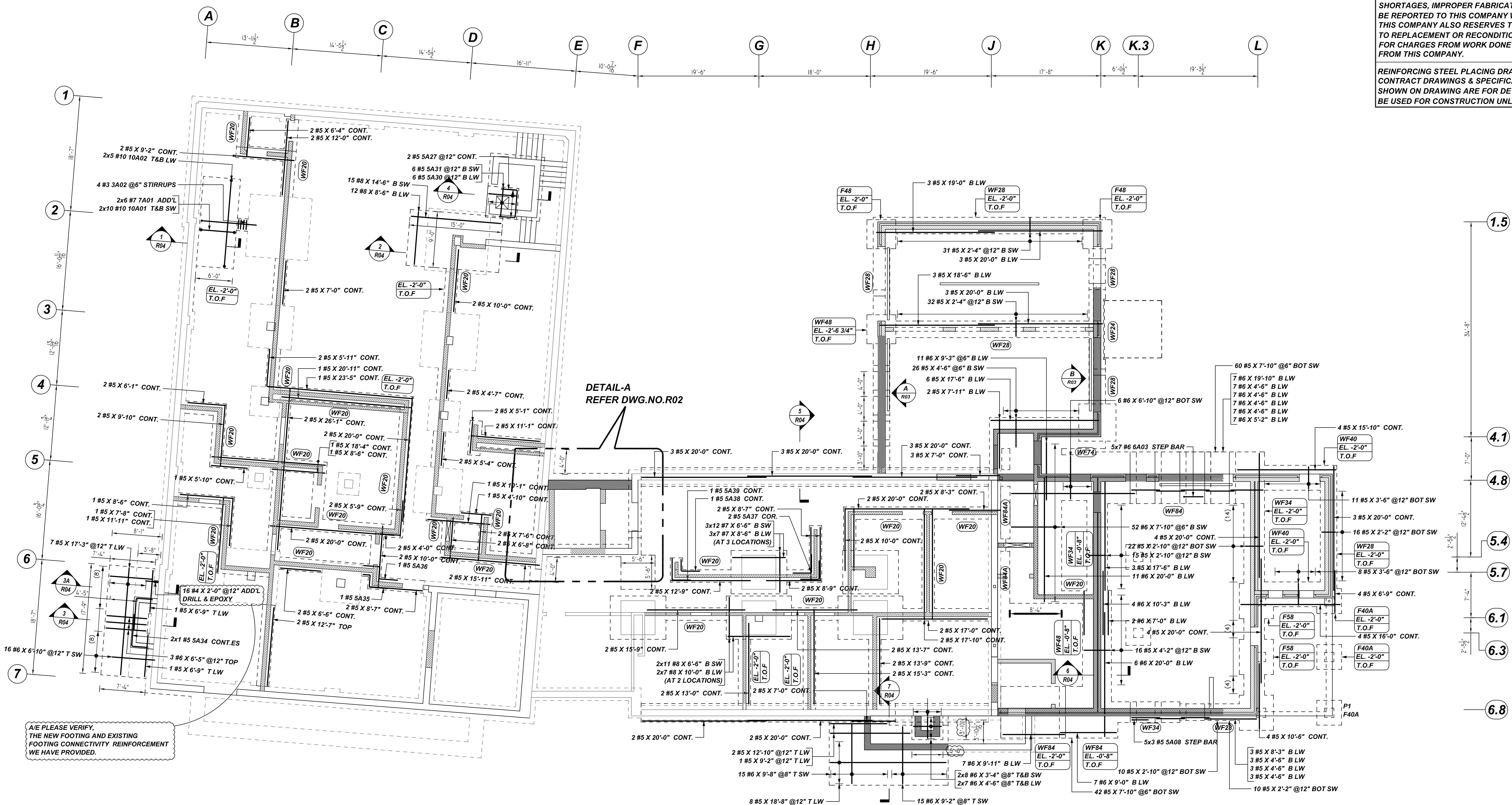


NOTICE

SHORTAGES, IMPROPER FABRICATION OR CLAIMS FOR ANY OTHER REASON MUST BE REPORTED TO THIS COMPANY WITHIN 10 DAYS FROM ORIGINAL DELIVERY. THIS COMPANY ALSO RESERVES THE RIGHT TO FIELD INSPECT MATERIALS PRIOR TO REPLACEMENT OR RECONDITIONING OF MATERIALS AND WILL NOT BE LIABLE FOR CHARGES FROM WORK DONE IN THE FIELD WITHOUT PRIOR AUTHORIZATION FROM THIS COMPANY.

REINFORCING STEEL PLACING DRAWING ONLY. USE IN CONJUNCTION WITH CONTRACT DRAWINGS & SPECIFICATIONS. ELEVATIONS & DIMENSIONS SHOWN ON DRAWING ARE FOR DETAILING PURPOSES ONLY AND SHOULD NOT BE USED FOR CONSTRUCTION UNLESS VERIFIED BY ENGINEER OR CONTRACTOR.



FOUNDATION REINFORCEMENT DETAILS

REF: S101, S201, S202, S301, S302, S402, S403 & S404 TO S406
SCALE: 1/8" = 1'-0"

Bar Mark	Qty	Size	Total Length	Type	X	Y	Z	E	F	G	H	I	J	K	L
SA01	30	#3	5'-8"	11	0'-4"	1'-3"	1'-3"	1'-3"	1'-3"	1'-3"	1'-3"	1'-3"	1'-3"	1'-3"	1'-3"
SA02	4	#3	6'-8"	11	0'-4"	1'-6"	1'-6"	1'-6"	1'-6"	1'-6"	1'-6"	1'-6"	1'-6"	1'-6"	1'-6"
SA03	225	#5	4'-10"	2	0'-10"	4'-0"	4'-0"	4'-0"	4'-0"	4'-0"	4'-0"	4'-0"	4'-0"	4'-0"	4'-0"
SA08	15	#5	5'-0"	17	2'-5"	2'-7"	4'-4"	2'-7"	2'-7"	2'-7"	2'-7"	2'-7"	2'-7"	2'-7"	2'-7"
SA30	6	#5	8'-4"	17	1'-4"	4'-6"	2'-6"	2'-6"	2'-6"	2'-6"	2'-6"	2'-6"	2'-6"	2'-6"	2'-6"
SA31	6	#5	8'-6"	17	1'-5"	4'-6"	2'-7"	2'-7"	2'-7"	2'-7"	2'-7"	2'-7"	2'-7"	2'-7"	2'-7"
SA34	2	#5	7'-9"	17	2'-7"	5'-2"	2'-7"	2'-7"	2'-7"	2'-7"	2'-7"	2'-7"	2'-7"	2'-7"	2'-7"
SA35	1	#5	6'-2"	20	1'-7"	2'-0"	3'-0"	3'-0"	3'-0"	3'-0"	3'-0"	3'-0"	3'-0"	3'-0"	3'-0"
SA36	1	#5	7'-8"	20	2'-8"	2'-0"	3'-0"	3'-0"	3'-0"	3'-0"	3'-0"	3'-0"	3'-0"	3'-0"	3'-0"
SA37	2	#5	6'-0"	17	3'-0"	3'-0"	3'-0"	3'-0"	3'-0"	3'-0"	3'-0"	3'-0"	3'-0"	3'-0"	3'-0"
SA38	1	#5	4'-11"	17	1'-11"	3'-0"	3'-0"	3'-0"	3'-0"	3'-0"	3'-0"	3'-0"	3'-0"	3'-0"	3'-0"
SA39	1	#5	6'-4"	17	3'-0"	3'-6"	3'-6"	3'-6"	3'-6"	3'-6"	3'-6"	3'-6"	3'-6"	3'-6"	3'-6"
SA40	4	#6	4'-5 1/2"	2	1'-0"	3'-5 1/2"	3'-5 1/2"	3'-5 1/2"	3'-5 1/2"	3'-5 1/2"	3'-5 1/2"	3'-5 1/2"	3'-5 1/2"	3'-5 1/2"	3'-5 1/2"
SA42	24	#6	2'-11 1/2"	2	1'-0"	1'-11 1/2"	1'-11 1/2"	1'-11 1/2"	1'-11 1/2"	1'-11 1/2"	1'-11 1/2"	1'-11 1/2"	1'-11 1/2"	1'-11 1/2"	1'-11 1/2"
SA43	35	#6	5'-8"	17	2'-5"	3'-1"	3'-1"	3'-1"	3'-1"	3'-1"	3'-1"	3'-1"	3'-1"	3'-1"	3'-1"
SA44	12	#7	10'-0"	2	1'-2"	8'-10"	8'-10"	8'-10"	8'-10"	8'-10"	8'-10"	8'-10"	8'-10"	8'-10"	8'-10"
SA45	20	#10	9'-2"	2	1'-10"	5'-8"	5'-8"	5'-8"	5'-8"	5'-8"	5'-8"	5'-8"	5'-8"	5'-8"	5'-8"
SA46	10	#10	17'-8"	2	1'-10"	14'-0"	14'-0"	14'-0"	14'-0"	14'-0"	14'-0"	14'-0"	14'-0"	14'-0"	14'-0"

LAP SCHEDULE

4000 PSI (CLASS-B) CASE - 1
Per ACI:318 (12.2.2)

BAR#	LENGTHS	
	TOP	OTHERS
#3	2'-0"	1'-7"
#4	2'-8"	2'-1"
#5	3'-4"	2'-7"
#6	4'-0"	3'-1"
#7	5'-10"	4'-6"
#8	6'-8"	5'-2"
#9	7'-7"	5'-10"
#10	8'-6"	6'-7"
#11	9'-5"	7'-3"

**ALL BARS IN THIS DRAWING
ASTM A615 GRADE 60
BLACK UNCOATED**

LOCATION	MIN. COVER
FOUNDATION BOTTOM & SIDES	3" CLR
FOUNDATION TOP	2" CLR
FOUNDATION WALL	2" CLR

FOOTING SCHEDULE

MARK	QTY	SIZE	GRID LOCATION	REINFORCING
F40	1	4'-0" X 4'-0" X 1'-0"	K.3/5.4	2x5 #4 X 3'-6" BOT EW
F40.1	1	4'-0" X 4'-0" X 1'-0"	K.3/6.3	2x5 #4 X 3'-6" BOT EW
F58	3	5'-8" X 5'-8" X 1'-0"	L/5.7-6.1, 6.1-6.8, 6.8	3x2x5 #6 X 5'-2" BOT EW
F40A	3	4'-0" X 4'-0" X 1'-0"	5.7-6.1, 6.1-6.8, 6.8	3x2x5 #4 X 3'-6" BOT EW
F48	3	4'-8" X 4'-8" X 1'-0"	H/1.5, K/1.5	2x2x6 #5 X 4'-2" BOT EW

PIER SCHEDULE

MARK	QTY	SIZE	GRID LOCATION	VERTS	TIES & ADD'L TIES
P1	1	18" X 18"	K.3/5.4	4 #6 6A01 VERT.	3 #3 3A01 @12" TIES 3 #3 3A01 @1.5" ADD'L TIES
P1A	6	18" X 18"	L/5.7-6.1, 6.1-6.8, 6.8	6x4 #6 6A02 VERT.	6x1 #3 3A01 @12" TIES 6x3 #3 3A01 @1.5" ADD'L TIES

REBAR GRADE 60 ASTM A-615

SPLICES USED

CLASS B 4,000 psi UNO

TOP BARS	OTHER BARS
#3	#3
#4	#4
#5	#5
#6	#6
#7	#7
#8	#8
#9	#9
#10	#10
#11	#11
#14	#14

ABBREVIATIONS

- ADD. = Additional
- B.O.W. = Bottom of wall
- C.B. = Core Bars
- DIAG. = Diagonal
- D.O. = Door Opening
- DWLS. = Dowels
- E.F. = Each Face
- E.S. = Each Side
- E.W. = Each Way
- FTG. = Footing
- F.F. = Far Face
- HORIZ. = Horizontal
- I.F. = Inside Face
- INTERS. = Intersection
- L.W. = Long Way
- N.F. = Near Face
- O.F. = Outside Face
- S.W. = Short Way
- T&B = Top & Bottom
- T.O.W. = Top of Wall
- Trans. = Transverse
- VERT. = Vertical

BAR MARK SIZE EQUIVALENT

Imperial	Soft Metric
#3	#10
#4	#13
#5	#16
#6	#19
#7	#22
#8	#25
#9	#29
#10	#32
#11	#36

CITY OF HYATTSVILLE
FOUNDATION REINFORCEMENT DETAILS
3505 HAMILTON STREET HYATTSVILLE, MD 20782
CUSTOMER:-

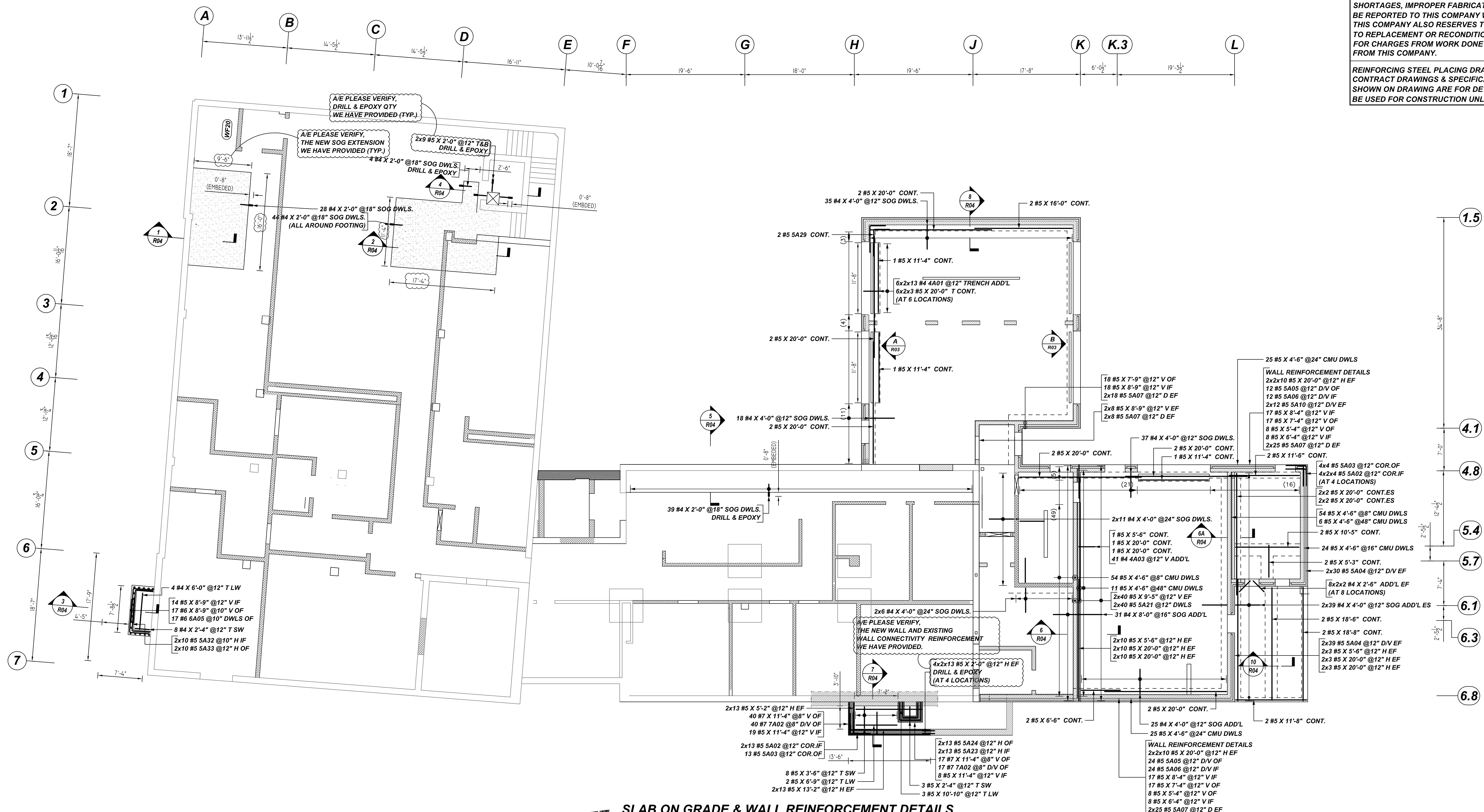
DESIGNER: COLUMBIA ENGINEERING
DRAWN BY: DATE: JOB NO: SHEET NO. R01
ADL/MET 06.14.22

REV NO	DATE	APPROVAL	SENT FOR	REV NO	DATE	SENT FOR
0	06.14.22	APPROVAL				

NOTICE

SHORTAGES, IMPROPER FABRICATION OR CLAIMS FOR ANY OTHER REASON MUST BE REPORTED TO THIS COMPANY WITHIN 10 DAYS FROM ORIGINAL DELIVERY. THIS COMPANY ALSO RESERVES THE RIGHT TO FIELD INSPECT MATERIALS PRIOR TO REPLACEMENT OR RECONDITIONING OF MATERIALS AND WILL NOT BE LIABLE FOR CHARGES FROM WORK DONE IN THE FIELD WITHOUT PRIOR AUTHORIZATION FROM THIS COMPANY.

REINFORCING STEEL PLACING DRAWING ONLY. USE IN CONJUNCTION WITH CONTRACT DRAWINGS & SPECIFICATIONS. ELEVATIONS & DIMENSIONS SHOWN ON DRAWING ARE FOR DETAILING PURPOSES ONLY AND SHOULD NOT BE USED FOR CONSTRUCTION UNLESS VERIFIED BY ENGINEER OR CONTRACTOR.



SLAB ON GRADE & WALL REINFORCEMENT DETAILS

REF: S101, S201, S202, S301, S302, S402, S403 & S404 TO S406
SCALE: 1/8" = 1'-0"

Release Number: R02

Bar Mark	Qty	Size	Total Length	Type	X	Y	Z	W	V	U	T	S	R	Q	P	O	N	M	L	K	J	I	H	G	F	E	D	C	B	A
4A01	156	#4	4'-9"	S4	1'-0"	0'-10"																								
4A03	41	#4	3'-6"	2	0'-10"	2'-6"																								
5A02	58	#5	4'-2"	2	0'-10"	3'-4"																								
5A03	29	#5	6'-9"	17		3'-4"																								
5A04	138	#5	3'-4"	2	0'-10"	2'-6"																								
5A05	36	#5	5'-7"	2	0'-10"	4'-9"																								
5A06	36	#5	6'-7"	2	0'-10"	5'-9"																								
5A07	152	#5	4'-4"	2	0'-10"	3'-6"																								
5A10	24	#5	2'-2"	2	0'-10"	1'-4"																								
5A21	80	#5	4'-5"	2	0'-10"	3'-7"																								
5A23	28	#5	5'-0"	17		2'-6"																								
5A24	26	#5	6'-5"	17		2'-11"																								
5A29	2	#5	7'-0"	17		2'-7"																								
5A32	20	#5	8'-5"	17		2'-11"																								
5A33	20	#5	8'-9"	17		3'-3"																								
6A05	17	#6	5'-4"	17		2'-2"																								
7A02	57	#7	9'-4"	17		3'-7"																								

LAP SCHEDULE

4000 PSI (CLASS-B) CASE - 1
Per ACI-318 (12.2.2)

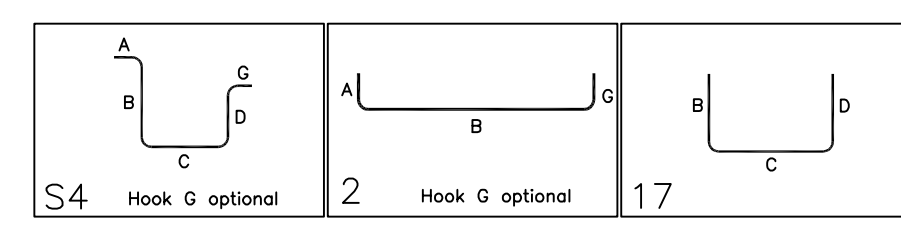
BAR#	LENGTHS	
	TOP	OTHERS
#3	2'-0"	1'-7"
#4	2'-8"	2'-1"
#5	3'-4"	2'-7"
#6	4'-0"	3'-1"
#7	5'-10"	4'-6"
#8	6'-8"	5'-2"
#9	7'-7"	5'-10"
#10	8'-6"	6'-7"
#11	9'-5"	7'-3"

**ALL BARS IN THIS DRAWING
ASTM A615 GRADE 60
BLACK UNCOATED**

TYPICAL REINFORCING BAR CLEARANCE TABLE

LOCATION	MIN. COVER
FOUNDATION BOTTOM & SIDES	3" CLR
FOUNDATION TOP	2" CLR
FOUNDATION WALL	2" CLR

ALL TOP BARS ARE DEFINED AS HORIZ BARS WITH MORE THAN 12" OF CONCRETE BELOW BARS.



REBAR GRADE 60 ASTM A-615

SPLICES USED

CLASS B 4,000 psi UNO		ABBREVIATIONS		BAR MARK SIZE EQUIVALENT	
TOP BARS	OTHER BARS			Imperial	Soft Metric
#3 24"	#3 19"	ADD.	= Additional	#3	#10
#4 32"	#4 25"	B.O.W.	= Bottom of wall	#4	#13
#5 40"	#5 31"	C.B.	= Corner Bars	#5	#16
#6 48"	#6 37"	DIAG.	= Diagonal	#6	#19
#7 70"	#7 54"	D.O.	= Door Opening	#7	#22
#8 80"	#8 62"	D.W.L.	= Dowels	#8	#25
#9 91"	#9 70"	E.F.	= Each Face	#9	#29
#10 102"	#10 79"	E.S.	= Each Side	#10	#32
#11 113"	#11 87"	E.W.	= Each Way	#11	#36
#14		FTG.	= Footing		
		F.F.	= Far Face		
		HORIZ.	= Horizontal		
		I.F.	= Inside Face		
		INTERS.	= Intersection		
		L.W.	= Long Way		
		N.F.	= Near Face		
		O.F.	= Outside Face		
		S.W.	= Short Way		
		T.O.W.	= Top of Wall		
		T&B	= Top & Bottom		
		T.O.W.	= Top of Wall		
		Trans.	= Transverse		
		VERT.	= Vertical		

CITY OF HYATTSVILLE
FOUNDATION REINFORCEMENT DETAILS
3505 HAMILTON STREET HYATTSVILLE, MD 20782
CUSTOMER:-

DESIGNER: COLUMBIA ENGINEERING

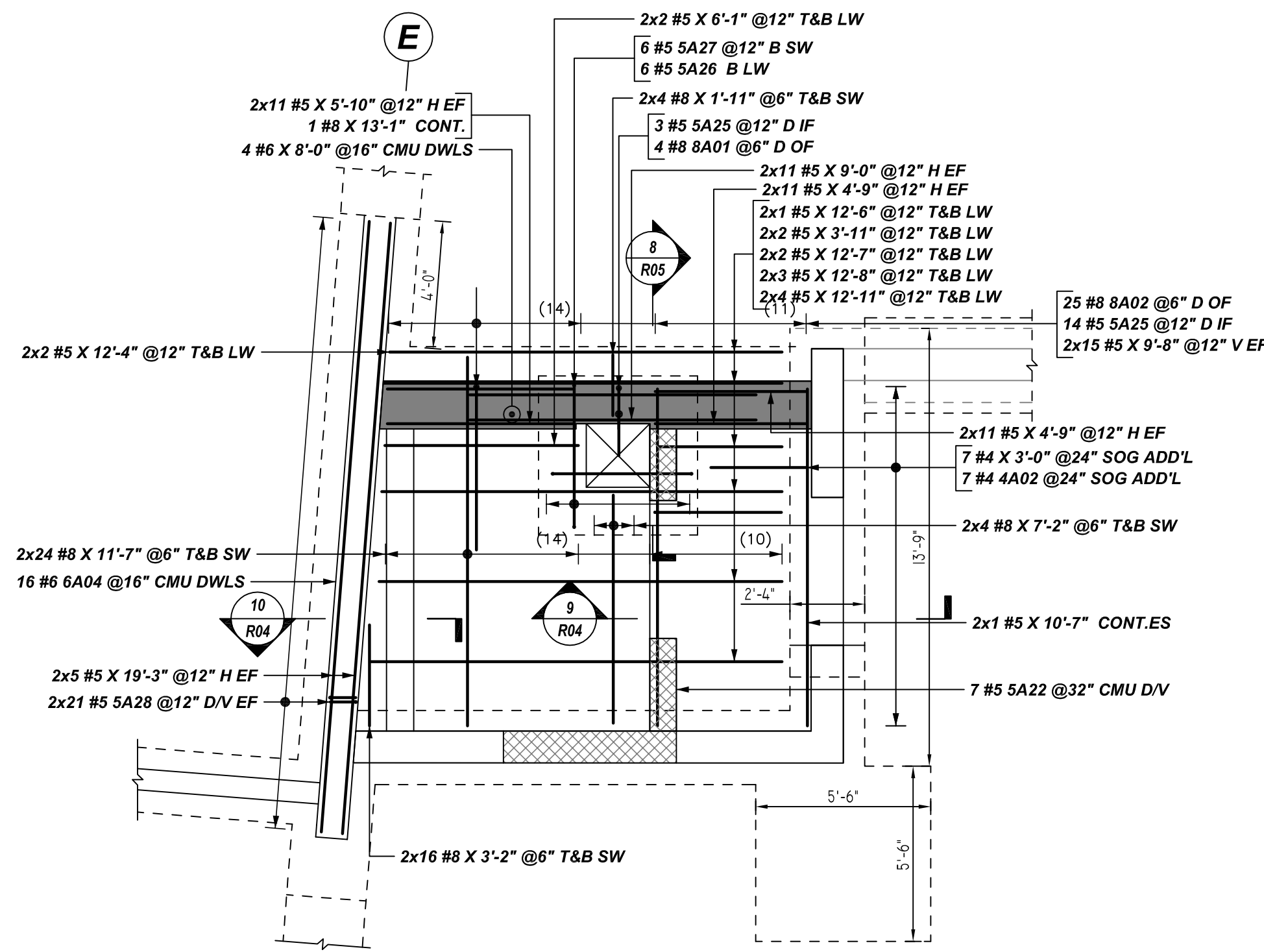
REV NO	DATE	APPROVAL	REV NO	DATE	SENT FOR
0	06.14.22				

DRAWN BY	DATE	JOB NO	SHEET NO.
ADL/MET	06.14.22	-	R02

NOTICE

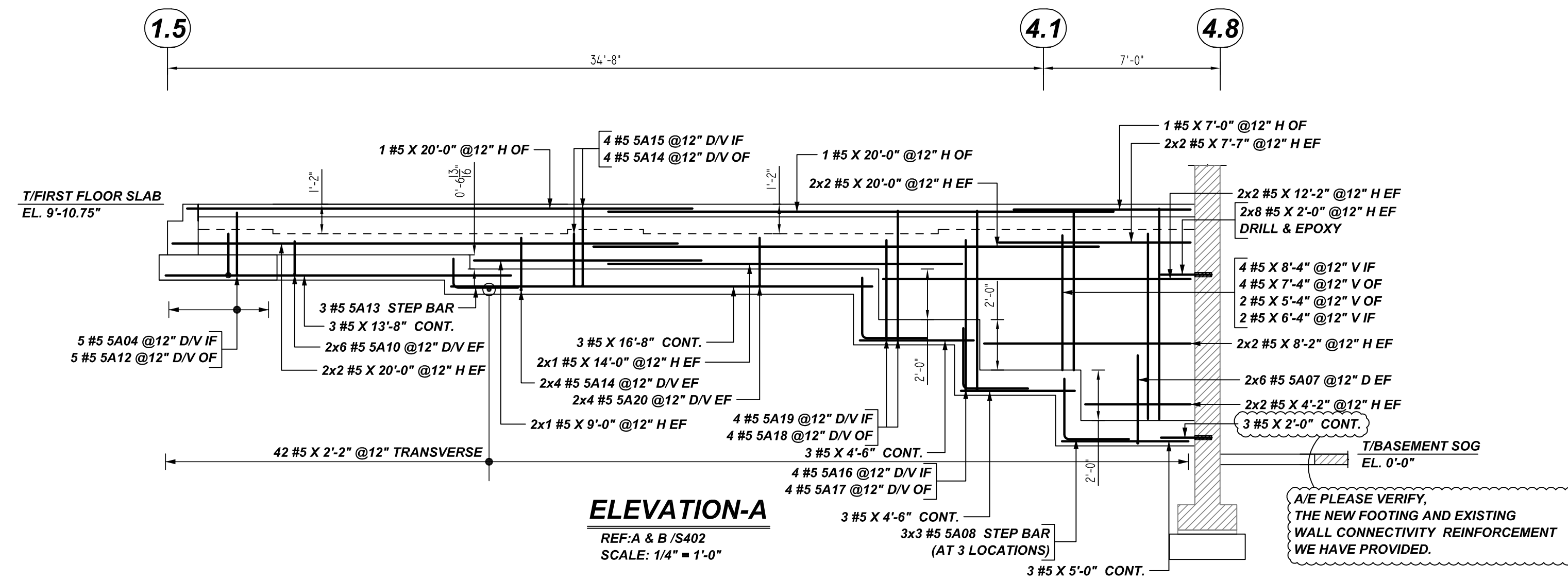
SHORTAGES, IMPROPER FABRICATION OR CLAIMS FOR ANY OTHER REASON MUST BE REPORTED TO THIS COMPANY WITHIN 10 DAYS FROM ORIGINAL DELIVERY. THIS COMPANY ALSO RESERVES THE RIGHT TO FIELD INSPECT MATERIALS PRIOR TO REPLACEMENT OR RECONDITIONING OF MATERIALS AND WILL NOT BE LIABLE FOR CHARGES FROM WORK DONE IN THE FIELD WITHOUT PRIOR AUTHORIZATION FROM THIS COMPANY.

REINFORCING STEEL PLACING DRAWING ONLY. USE IN CONJUNCTION WITH CONTRACT DRAWINGS & SPECIFICATIONS. ELEVATIONS & DIMENSIONS SHOWN ON DRAWING ARE FOR DETAILING PURPOSES ONLY AND SHOULD NOT BE USED FOR CONSTRUCTION UNLESS VERIFIED BY ENGINEER OR CONTRACTOR.



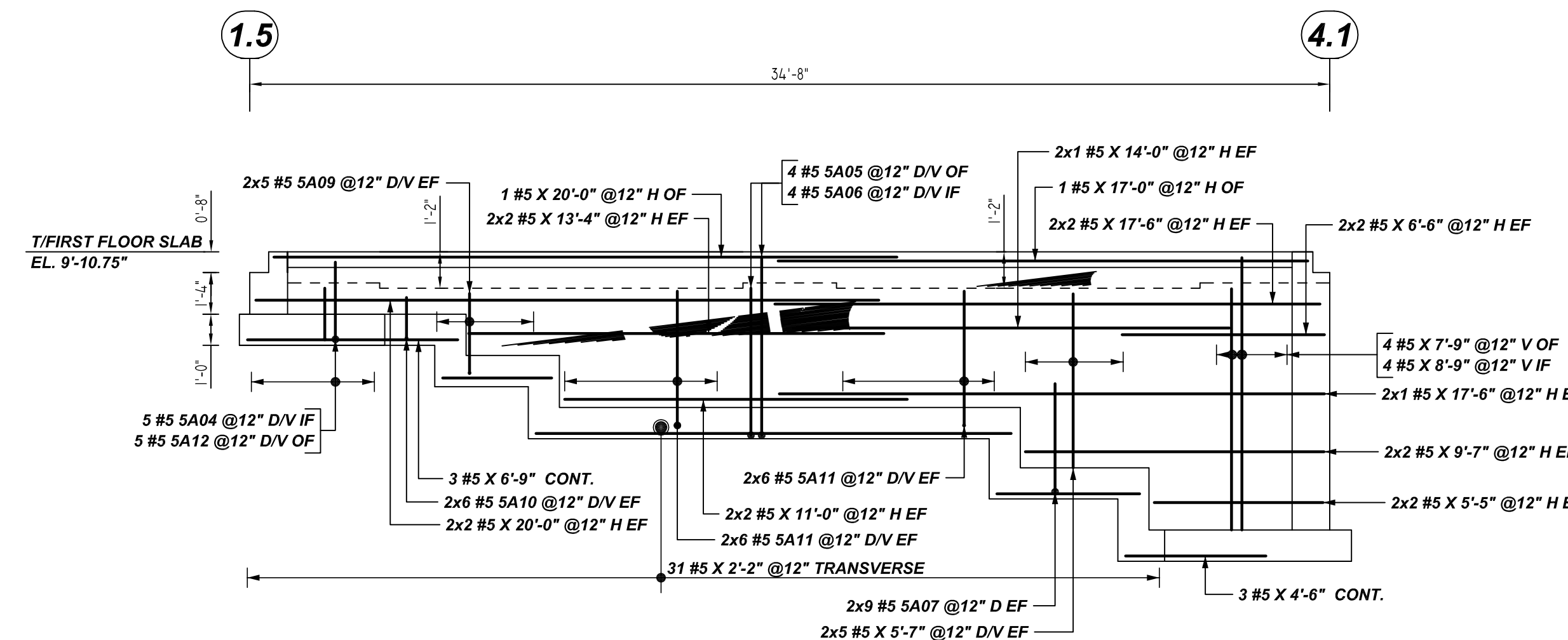
DETAIL-A ELEVATOR REINFORCEMENT DETAILS

REF: S101, S201, S202, S301, S302, S402, S403 & S404 TO S406
SCALE: 1/4" = 1'-0"



ELEVATION-A

REF: A & B / S402
SCALE: 1/4" = 1'-0"



ELEVATION-B

REF: A & B / S402
SCALE: 1/4" = 1'-0"

Bar Mark	Qty	Size	Total Length	Type	X'	Y'	Z'	T'	V'	W'	U'	V'	X'	Y'	Z'	
4A02	7	#4	6'-0"	17												
5A04	10	#5	3'-4"	2	0'-10"	2'-6"	4'-0"									
5A05	4	#5	5'-7"	2	0'-10"	4'-9"										
5A06	4	#5	6'-7"	2	0'-10"	5'-9"										
5A07	30	#5	4'-4"	2	0'-10"	3'-6"										
5A08	9	#5	5'-0"	17		2'-5"	2'-7"									
5A09	10	#5	3'-5"	2	0'-10"	2'-7"										
5A10	24	#5	2'-2"	2	0'-10"	1'-4"										
5A11	24	#5	5'-2"	2	0'-10"	4'-4"										
5A12	10	#5	2'-6"	2	0'-10"	1'-6"										
5A13	3	#5	3'-9"	17		1'-2"	2'-7"									
5A14	12	#5	2'-11"	2	0'-10"	2'-1"										
5A15	4	#5	3'-11"	2	0'-10"	3'-1"										
5A16	4	#5	7'-11"	2	0'-10"	7'-1"										
5A17	4	#5	6'-9"	2	0'-10"	5'-11"										
5A18	4	#5	4'-9"	2	0'-10"	3'-11"										
5A19	4	#5	5'-11"	2	0'-10"	5'-11"										
5A20	8	#5	2'-9"	2	0'-10"	1'-11"										
5A22	7	#5	5'-11"	2	0'-10"	4'-3"										
5A25	17	#5	5'-2"	2	1'-4"	3'-10"										
5A26	6	#5	9'-7"	17		2'-7"	4'-5"	2'-7"								
5A27	6	#5	9'-8"	17		2'-7"	4'-6"	2'-7"								
5A28	42	#5	4'-0"	2	0'-10"	3'-2"										
6A04	16	#5	5'-3"	2	0'-10"	4'-5"										
8A01	4	#8	10'-3"	2	1'-4"	9'-2"										
8A02	25	#8	14'-4"	17		5'-2"	9'-2"									

LAP SCHEDULE

4000 PSI (CLASS-B) CASE - 1
Per ACI 318 (12.2.2)

BAR#	LENGTHS	
	TOP	OTHERS
#3	2'-0"	1'-7"
#4	2'-8"	2'-1"
#5	3'-4"	2'-7"
#6	4'-0"	3'-1"
#7	5'-10"	4'-6"
#8	6'-8"	5'-2"
#9	7'-7"	5'-10"
#10	8'-6"	6'-7"
#11	9'-5"	7'-3"

ALL TOP BARS ARE DEFINED AS HORIZ BARS WITH MORE THAN 12" OF CONCRETE BELOW BARS.

**ALL BARS IN THIS DRAWING
ASTM A615 GRADE 60
BLACK UNCOATED**

TYPICAL REINFORCING BAR CLEARANCE TABLE	
LOCATION	MIN. COVER
FOUNDATION BOTTOM & SIDES	3" CLR
FOUNDATION TOP	2" CLR
FOUNDATION WALL	2" CLR

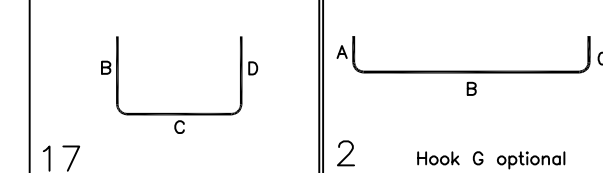
REBAR GRADE 60 ASTM A-615

SPLICES USED		ABBREVIATIONS		BAR MARK SIZE EQUIVALENT	
CLASS B 4,000 psi UNO				Imperial	Soft Metric
TOP BARS	OTHER BARS	ADD. = Additional	B.O.W. = Bottom of wall	#3	#10
#3 24"	#3 19"	C.B. = Corner Bars	DIAG. = Diagonal	#4	#13
#4 32"	#4 25"	D.O. = Door Opening	D.W.L.S. = Dowels	#5	#16
#5 40"	#5 31"	E.F. = Each Face	E.S. = Each Side	#6	#19
#6 48"	#6 37"	E.W. = Each Way	F.F. = Far Face	#7	#22
#7 70"	#7 54"	F.F. = Footing	HORIZ. = Horizontal	#8	#25
#8 80"	#8 62"	I.F. = Inside Face	INTERS. = Intersection	#9	#29
#9 91"	#9 70"	L.W. = long Way	N.F. = Near Face	#10	#32
#10 102"	#10 79"	O.F. = Outside Face	S.W. = Short Way	#11	#36
#11 113"	#11 87"	T&B = Top & Bottom	T.O.W. = Top of Wall		
#14	#14	Trans. = Transverse	VERT. = Vertical		

CITY OF HYATTSVILLE
FOUNDATION REINFORCEMENT DETAILS
3505 HAMILTON STREET HYATTSVILLE, MD 20782

CUSTOMER:
DESIGNER: COLUMBIA ENGINEERING

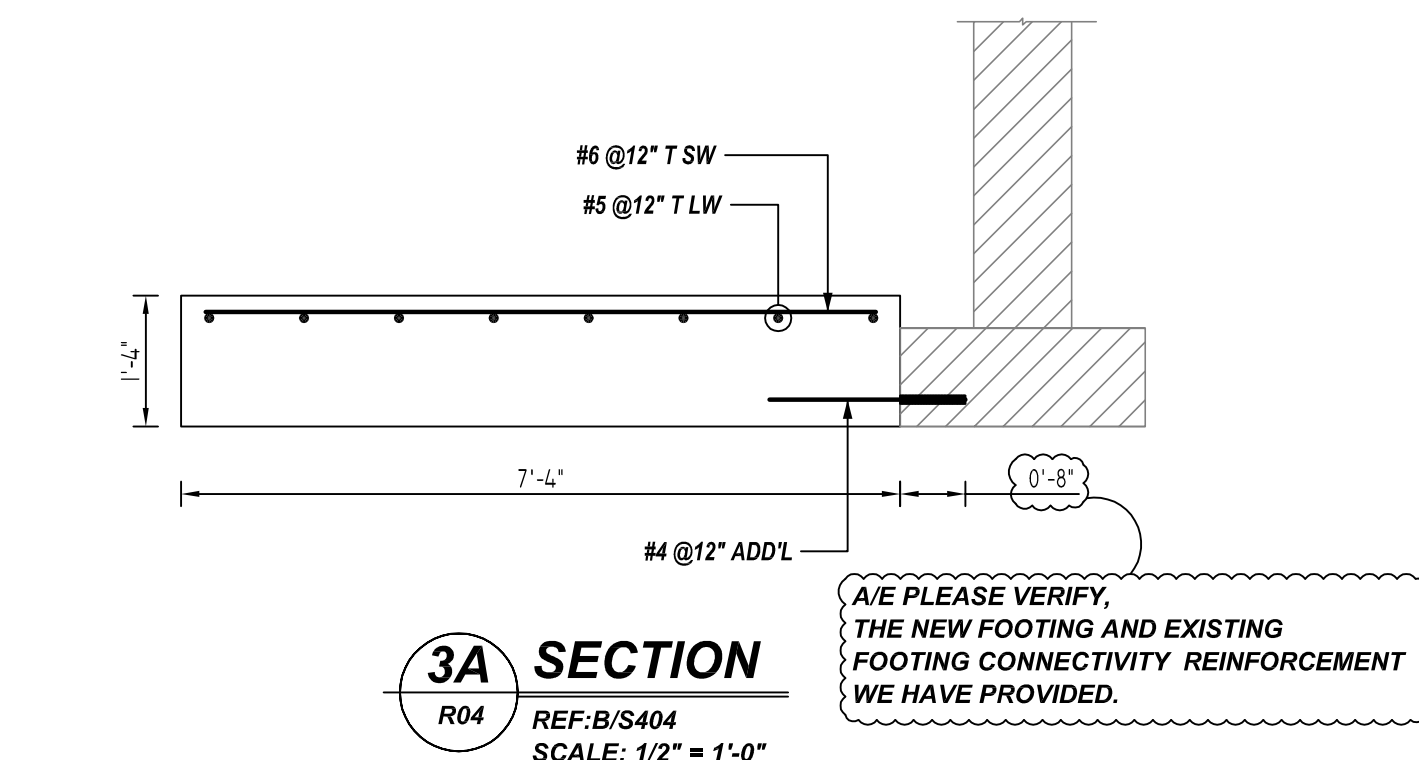
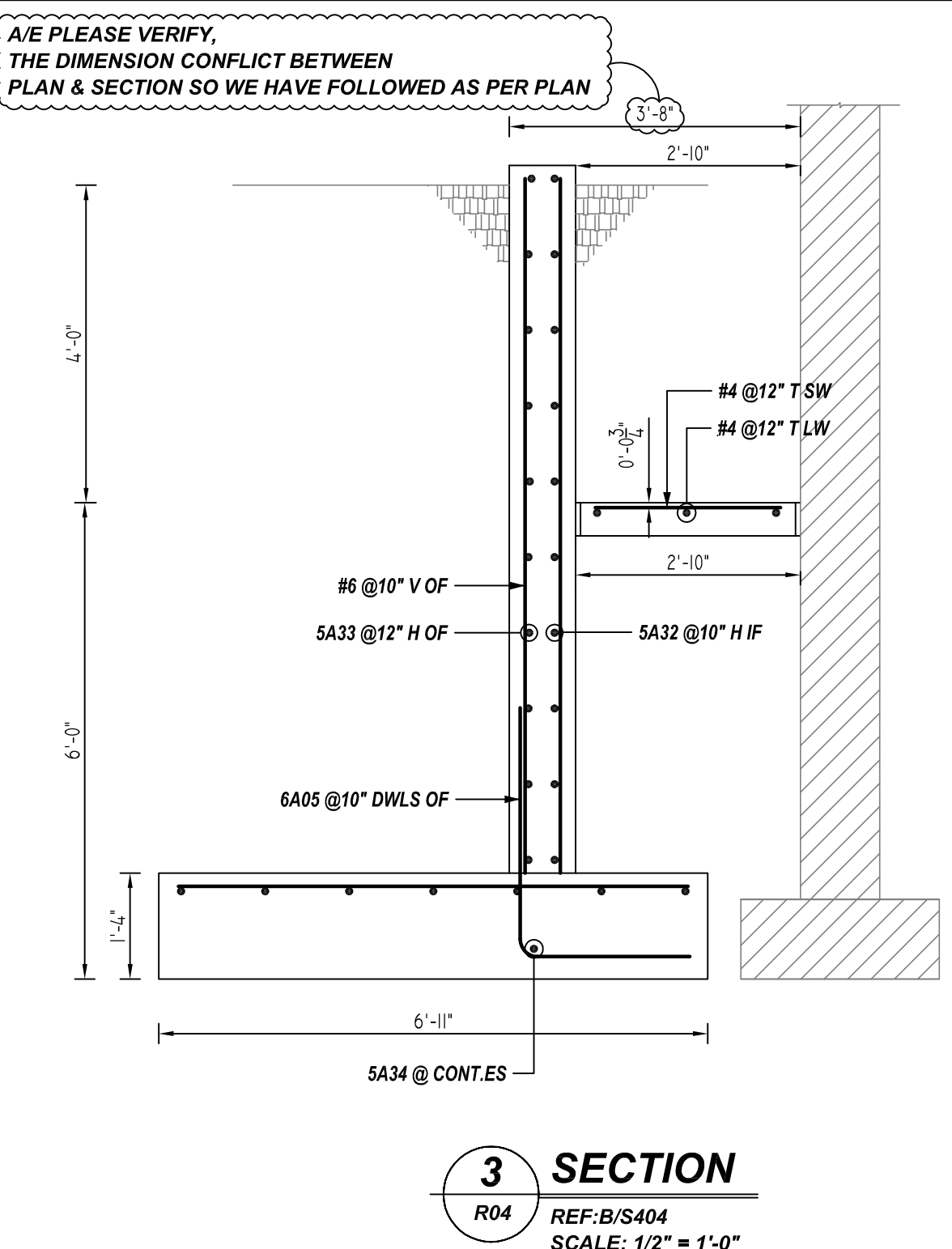
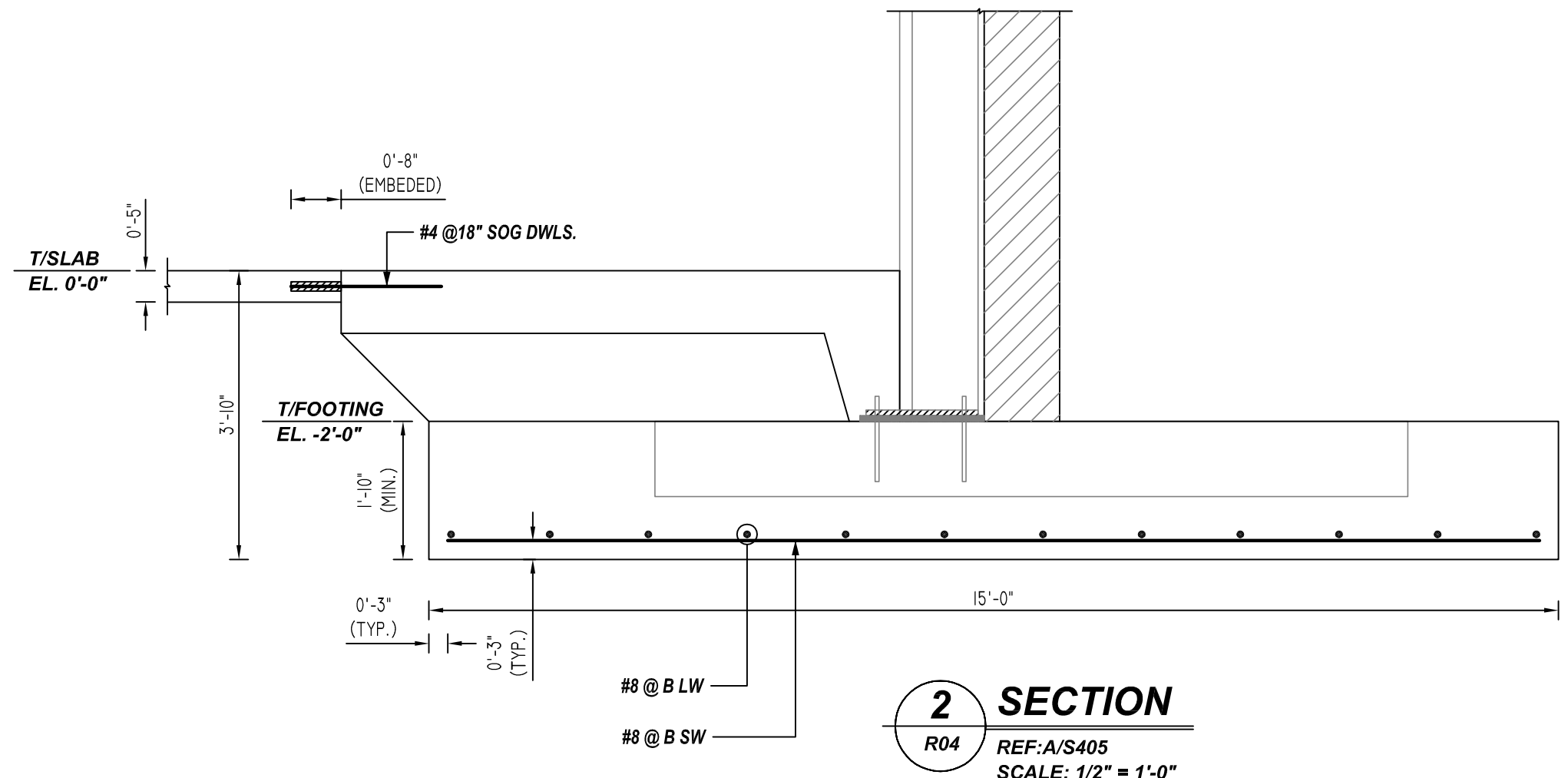
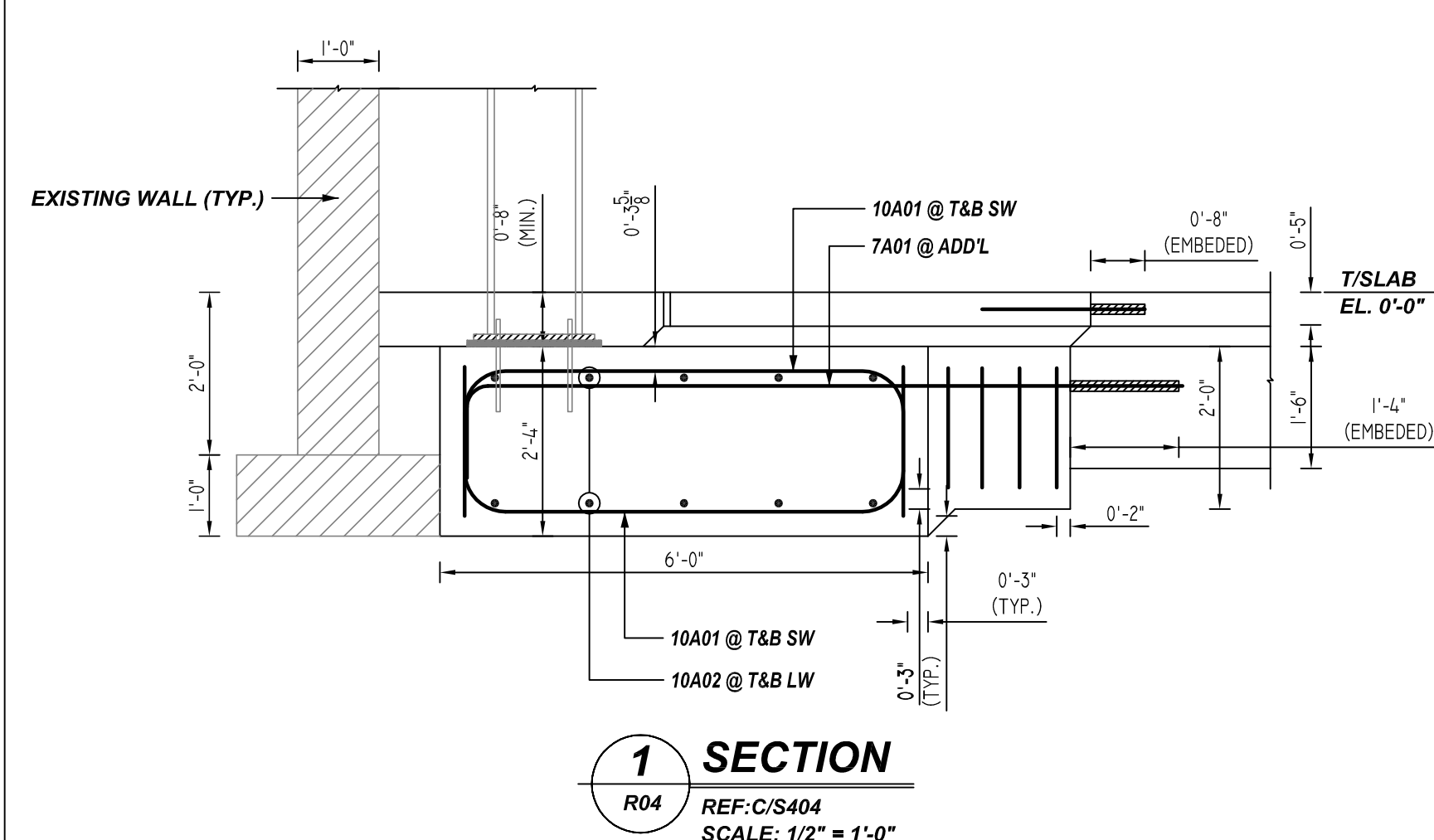
REV NO	DATE	SENT FOR	REV NO	DATE	SENT FOR	DRAWN BY	DATE	JOB NO	SHEET NO.
0	06.14.22	APPROVAL				ADL/MET	06.14.22	-	R03



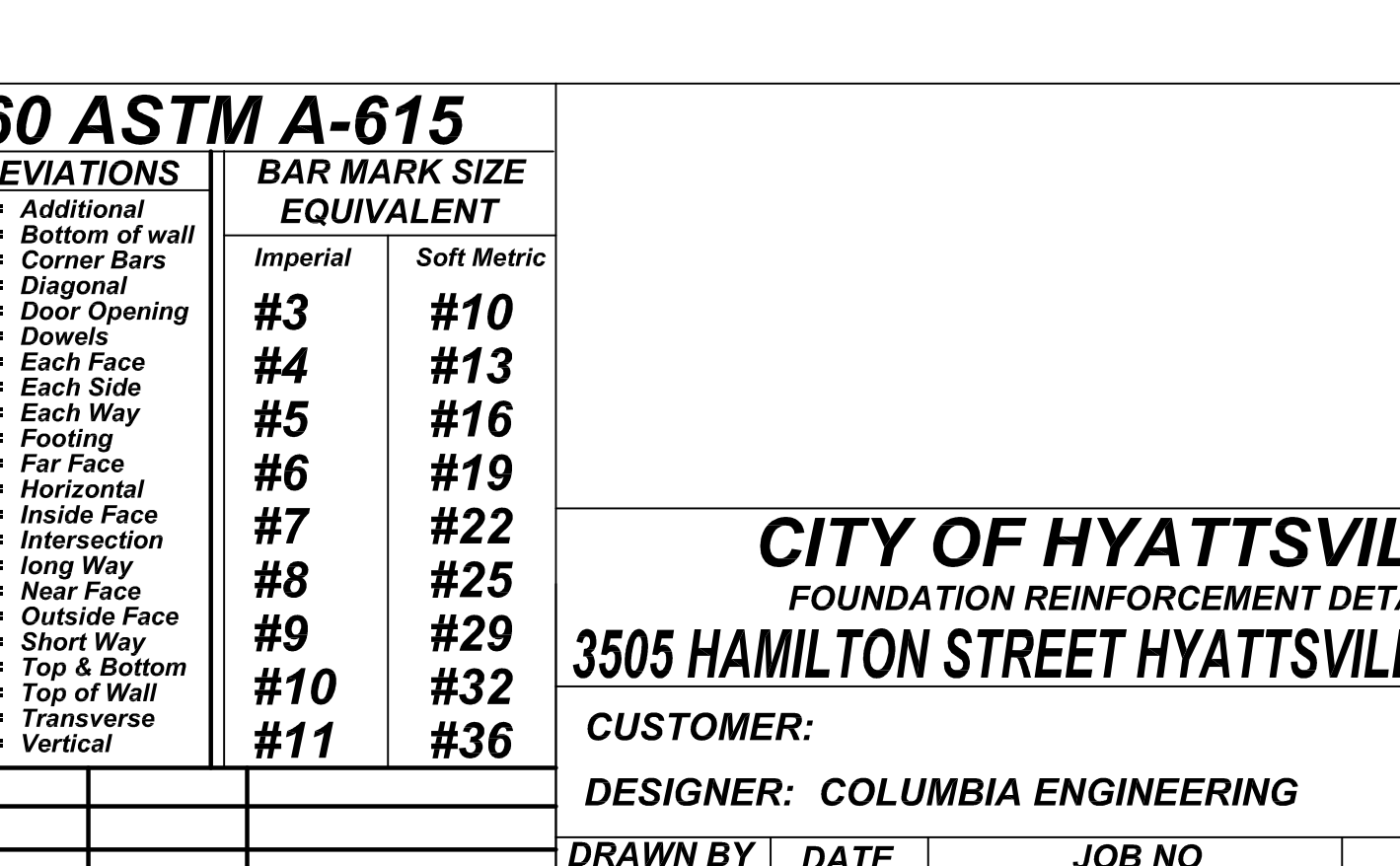
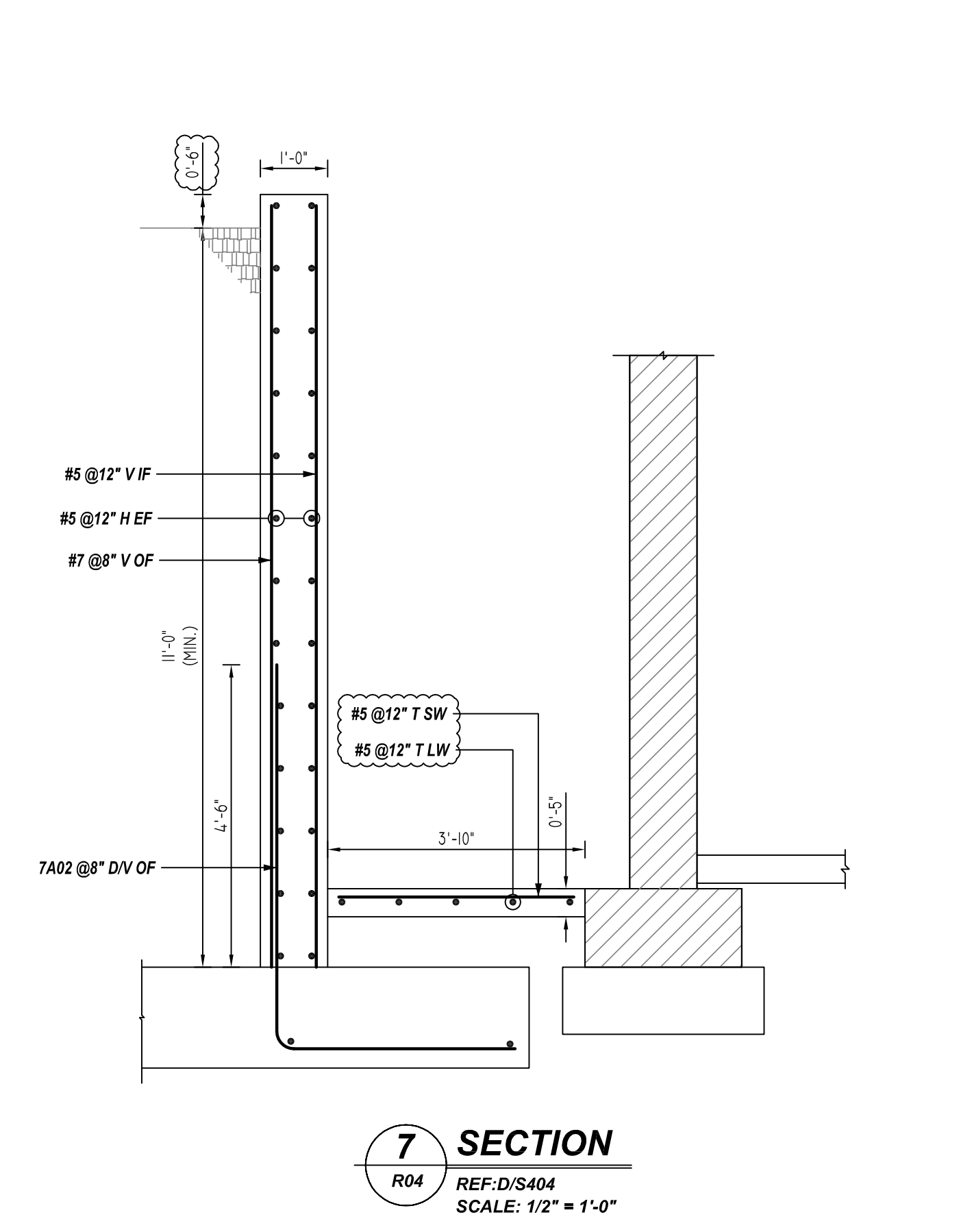
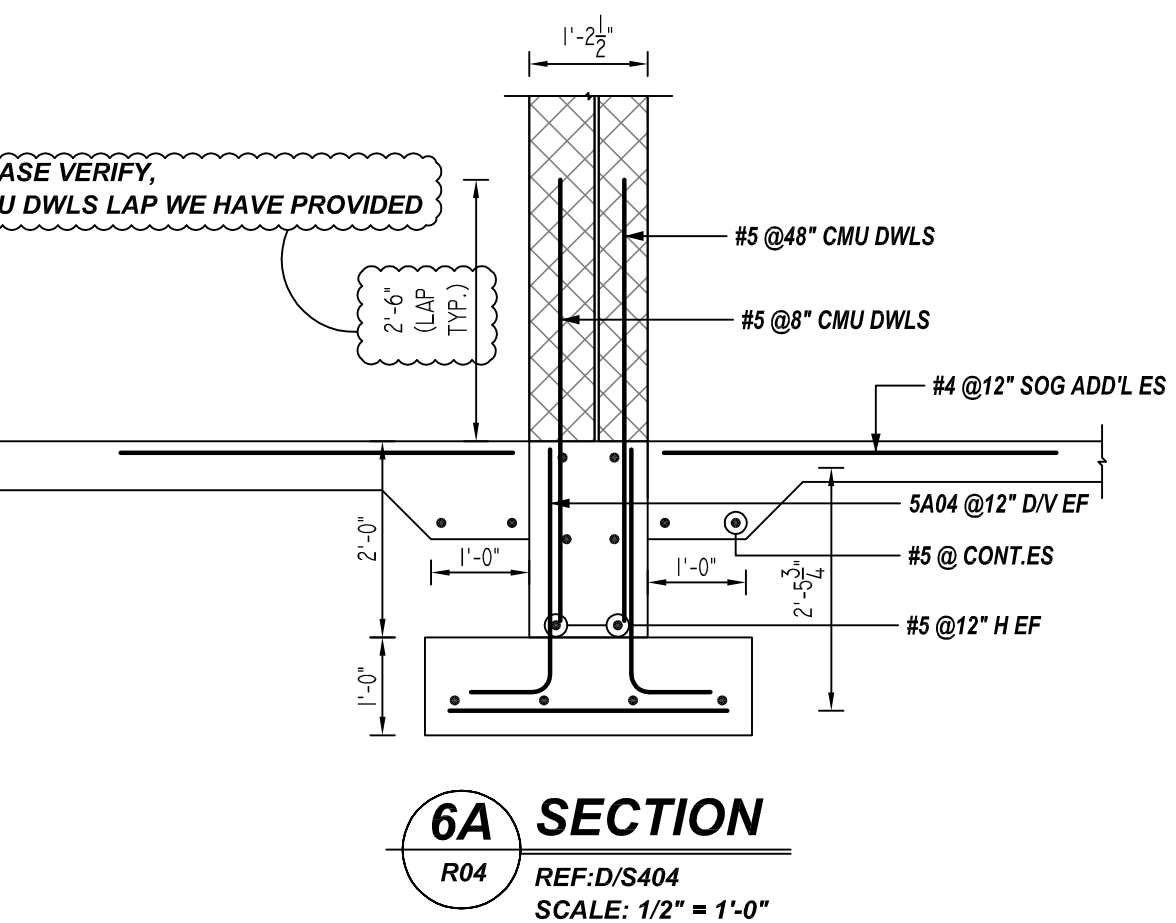
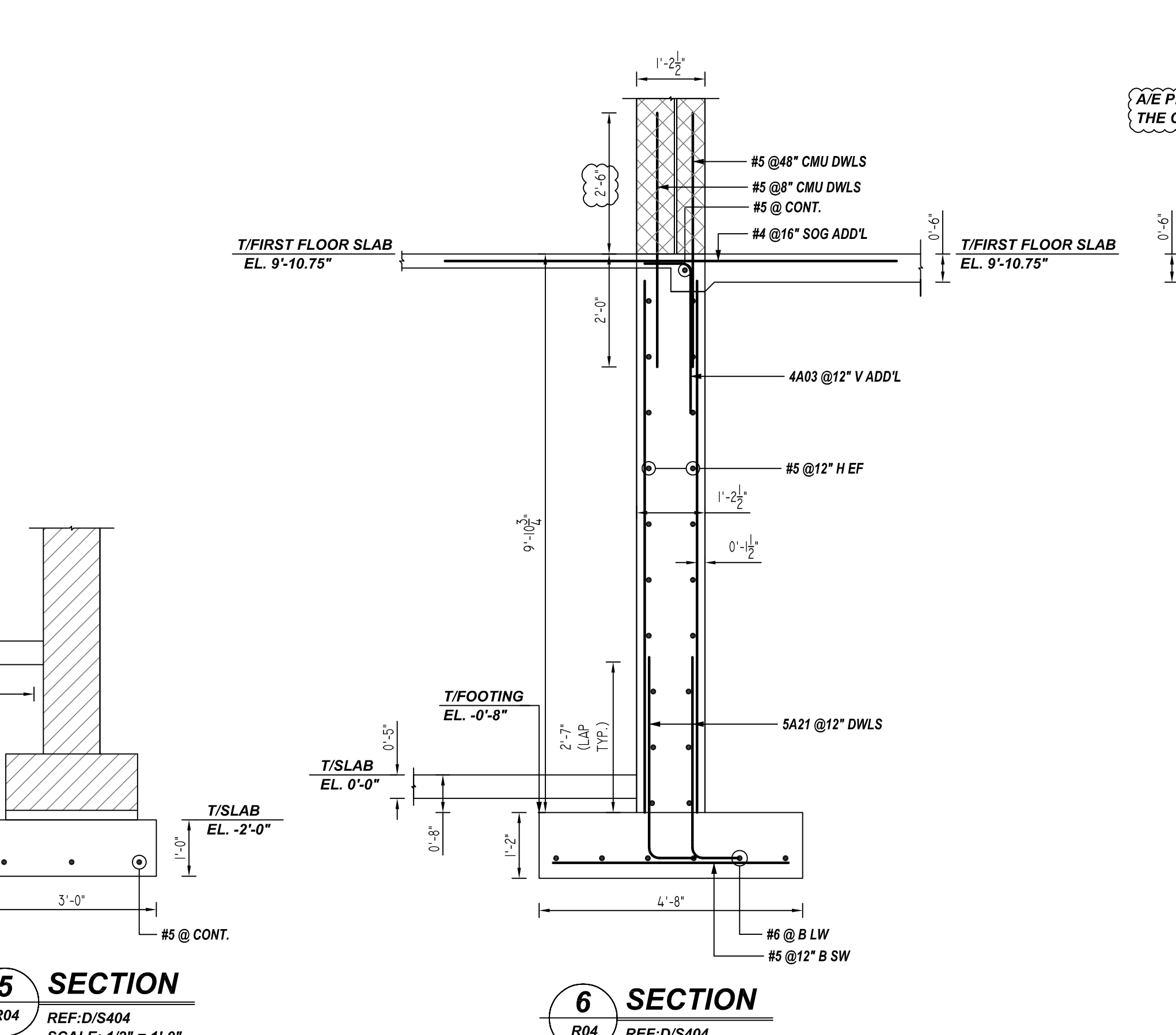
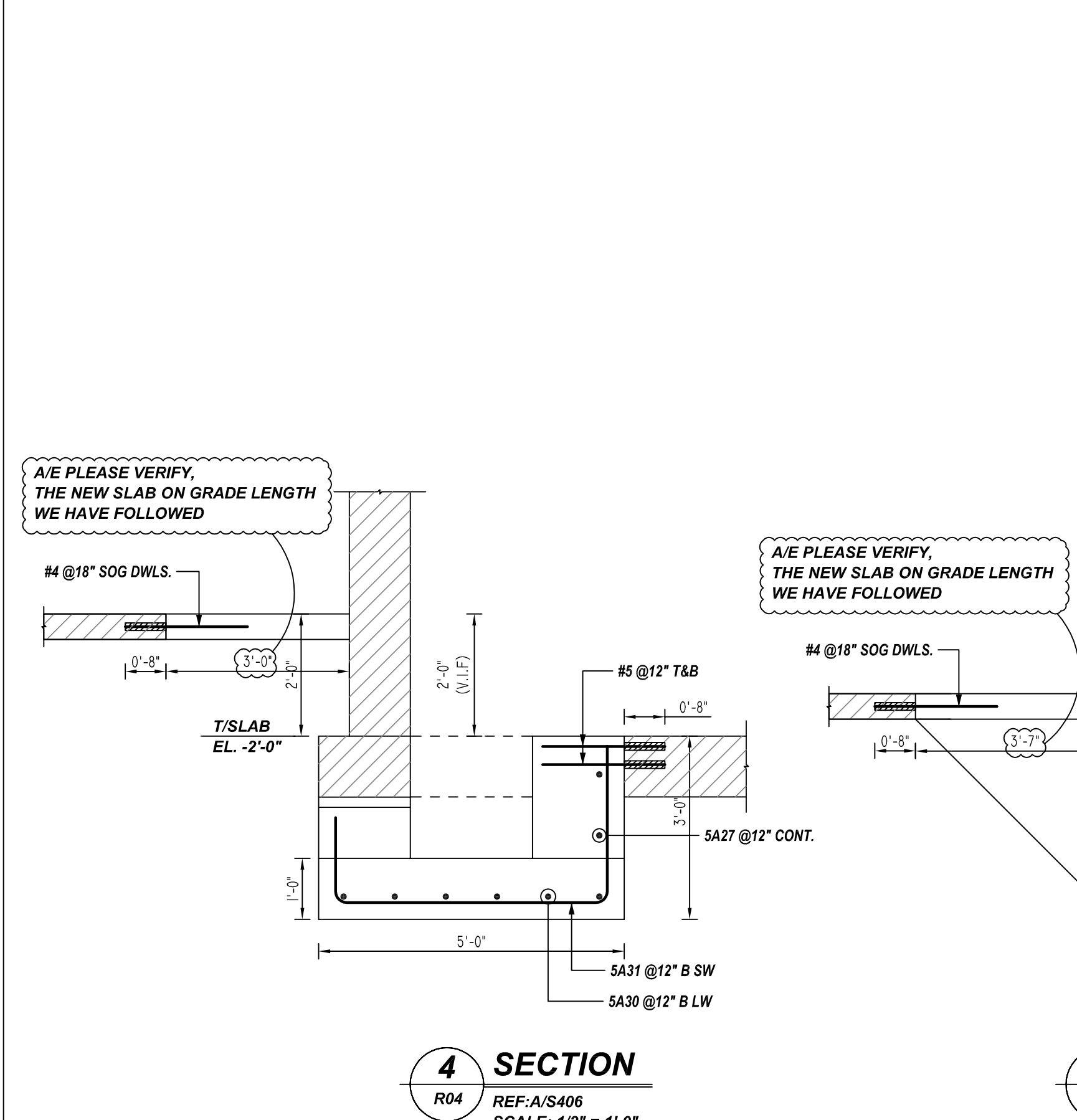
NOTICE

SHORTAGES, IMPROPER FABRICATION OR CLAIMS FOR ANY OTHER REASON MUST BE REPORTED TO THIS COMPANY WITHIN 10 DAYS FROM ORIGINAL DELIVERY. THIS COMPANY ALSO RESERVES THE RIGHT TO FIELD INSPECT MATERIALS PRIOR TO REPLACEMENT OR RECONDITIONING OF MATERIALS AND WILL NOT BE LIABLE FOR CHARGES FROM WORK DONE IN THE FIELD WITHOUT PRIOR AUTHORIZATION FROM THIS COMPANY.

REINFORCING STEEL PLACING DRAWING ONLY. USE IN CONJUNCTION WITH CONTRACT DRAWINGS & SPECIFICATIONS. ELEVATIONS & DIMENSIONS SHOWN ON DRAWING ARE FOR DETAILING PURPOSES ONLY AND SHOULD NOT BE USED FOR CONSTRUCTION UNLESS VERIFIED BY ENGINEER OR CONTRACTOR.



A/E PLEASE VERIFY, THE NEW FOOTING AND EXISTING FOOTING CONNECTIVITY REINFORCEMENT WE HAVE PROVIDED.



LAP SCHEDULE

4000 PSI (CLASS-B) CASE - 1
Per ACI 318 (12.2.2)

BAR#	LENGTHS	
	TOP	OTHERS
#3	2'-0"	1'-7"
#4	2'-8"	2'-1"
#5	3'-4"	2'-7"
#6	4'-0"	3'-1"
#7	5'-10"	4'-6"
#8	6'-8"	5'-2"
#9	7'-7"	5'-10"
#10	8'-6"	6'-7"
#11	9'-5"	7'-3"

ALL TOP BARS ARE DEFINED AS HORIZ BARS WITH MORE THAN 12" OF CONCRETE BELOW BARS.

REBAR GRADE 60 ASTM A-615

SPLICES USED
ALL BARS IN THIS DRAWING CLASS B 4,000 PSI UNO
ASTM A615 GRADE 60
BLACK UNCOATED

LOCATION	OTHER BARS	OTHER BARS
FOUNDATION TOP	#3 19"	#4 25"
FOUNDATION BOTTOM & SIDES	#3 19"	#4 25"
FOUNDATION WALL	#3 19"	#4 25"

ABBREVIATIONS	BAR MARK SIZE EQUIVALENT	
	Imperial	Soft Metric
ADD. = Additional	#3	#10
B.O.W. = Bottom of wall	#4	#13
C.B. = Corner Bars	#5	#16
DIAG. = Diagonal	#6	#19
D.O. = Door Opening	#7	#22
DWLS. = Dowels	#8	#25
E.F. = Each Face	#9	#29
E.S. = Each Side	#10	#32
E.W. = Each Way	#11	#36
FTG. = Footing		
F.F. = Far Face		
HORIZ. = Horizontal		
I.F. = Inside Face		
INTERS. = Intersection		
L.W. = long Way		
N.F. = Near Face		
O.F. = Outside Face		
S.W. = Short Way		
T&B = Top & Bottom		
T.O.W. = Top of Wall		
Trans. = Transverse		
VERT. = Vertical		

CITY OF HYATTSVILLE
FOUNDATION REINFORCEMENT DETAILS

3505 HAMILTON STREET HYATTSVILLE, MD 20782

CUSTOMER: DESIGNER: COLUMBIA ENGINEERING

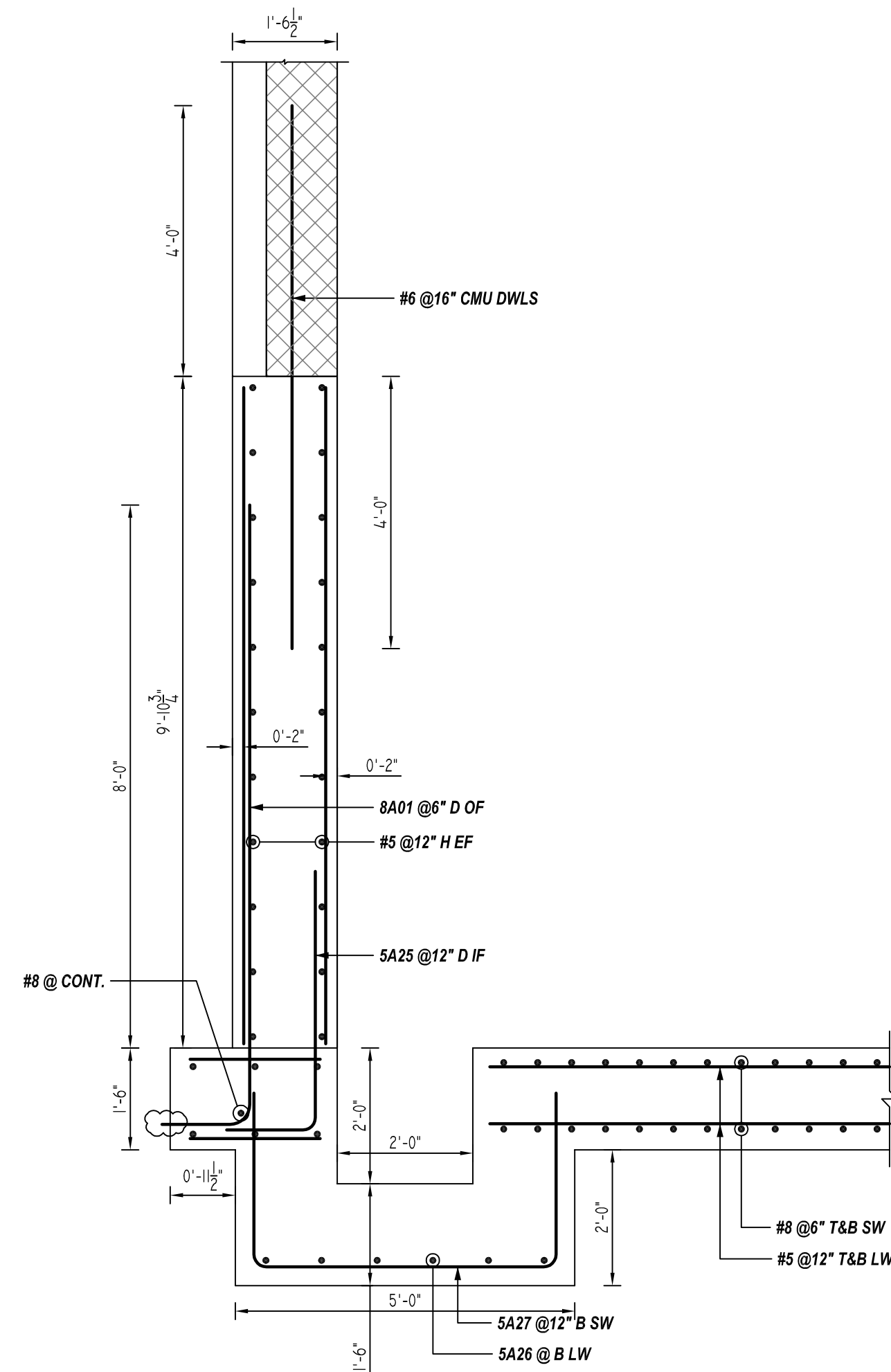
REV NO	DATE	SENT FOR	REV NO	DATE	SENT FOR
0	06.14.22	APPROVAL			

DRAWN BY	DATE	JOB NO	SHEET NO.
ADL/MET	06.14.22	-	R04

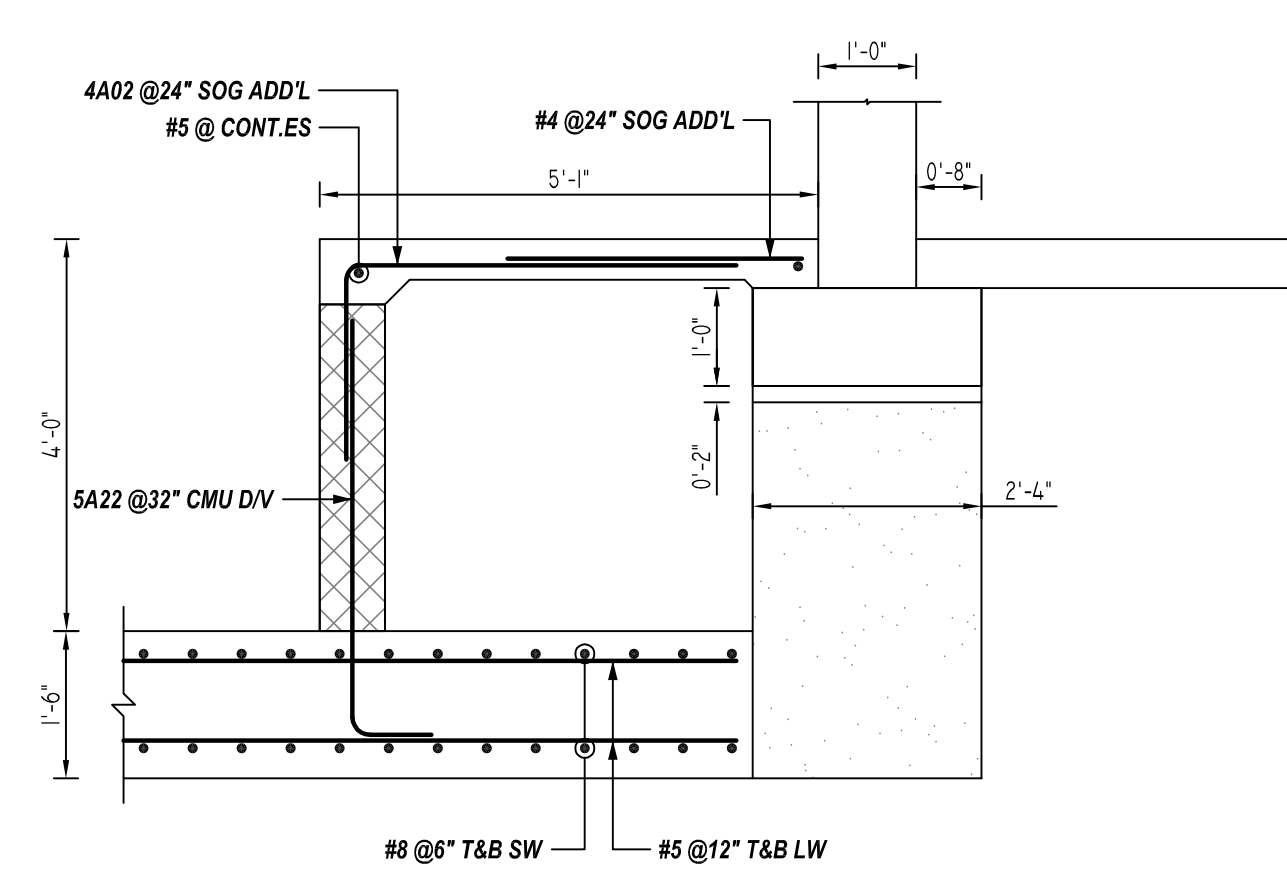
NOTICE

SHORTAGES, IMPROPER FABRICATION OR CLAIMS FOR ANY OTHER REASON MUST BE REPORTED TO THIS COMPANY WITHIN 10 DAYS FROM ORIGINAL DELIVERY. THIS COMPANY ALSO RESERVES THE RIGHT TO FIELD INSPECT MATERIALS PRIOR TO REPLACEMENT OR RECONDITIONING OF MATERIALS AND WILL NOT BE LIABLE FOR CHARGES FROM WORK DONE IN THE FIELD WITHOUT PRIOR AUTHORIZATION FROM THIS COMPANY.

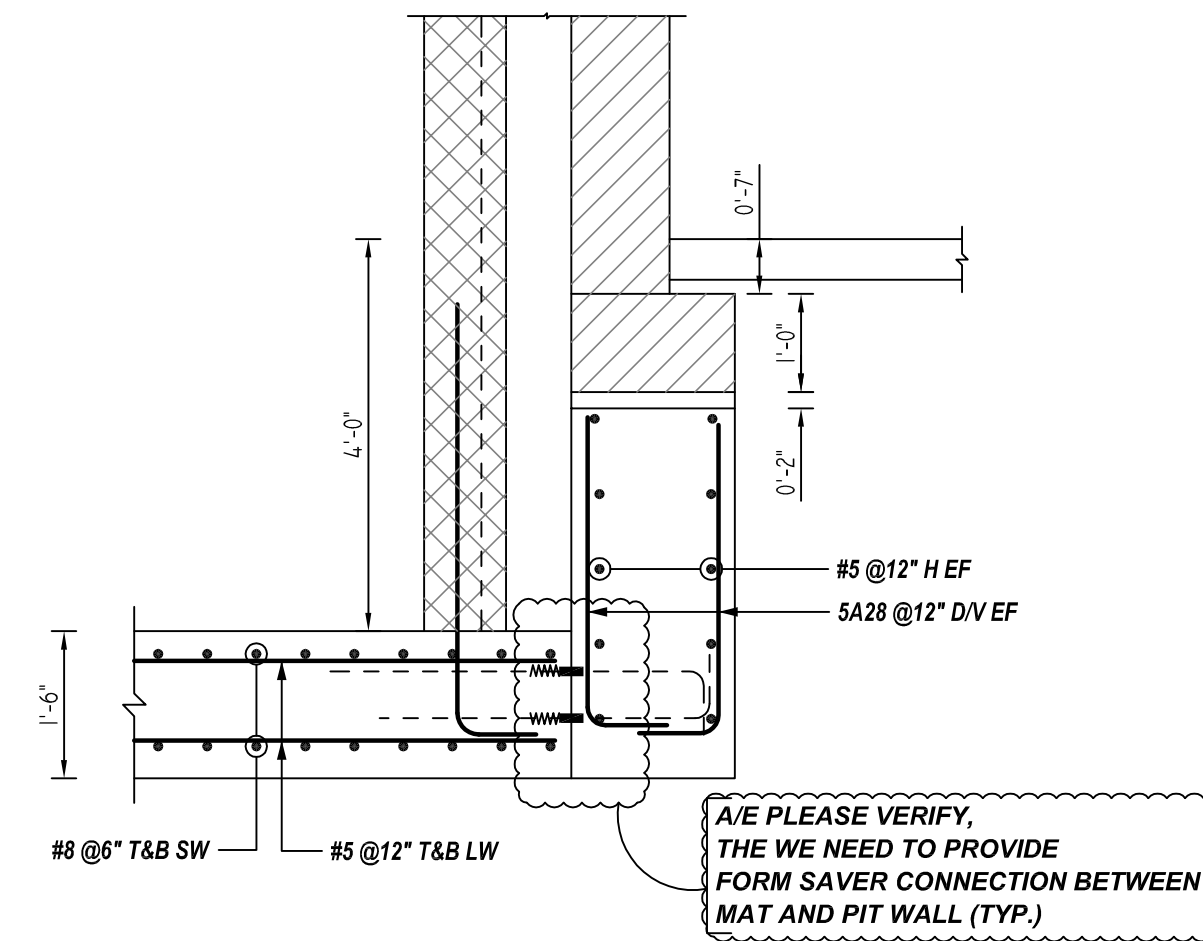
REINFORCING STEEL PLACING DRAWING ONLY. USE IN CONJUNCTION WITH CONTRACT DRAWINGS & SPECIFICATIONS. ELEVATIONS & DIMENSIONS SHOWN ON DRAWING ARE FOR DETAILING PURPOSES ONLY AND SHOULD NOT BE USED FOR CONSTRUCTION UNLESS VERIFIED BY ENGINEER OR CONTRACTOR.



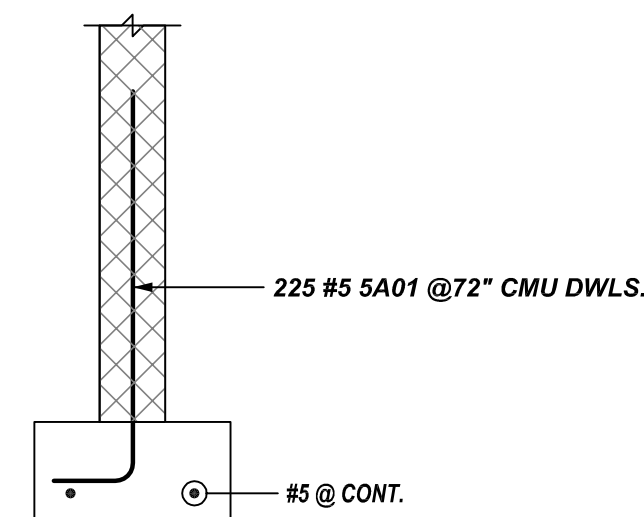
8 SECTION
R05 REF: B & Ba/S401
SCALE: 1/2" = 1'-0"



9 SECTION
R05 REF: D/S404
SCALE: 1/2" = 1'-0"



10 SECTION
R05 REF: D/S404
SCALE: 1/2" = 1'-0"



TYPICAL NON BEARING CMU WALL DETAIL

REF: D/S301
SCALE: 1/2" = 1'-0"

LAP SCHEDULE

4000 PSI (CLASS-B) CASE - 1
Per ACI 318 (12.2.2)

BAR#	LENGTHS	
	TOP	OTHERS
#3	2'-0"	1'-7"
#4	2'-8"	2'-1"
#5	3'-4"	2'-7"
#6	4'-0"	3'-1"
#7	5'-10"	4'-6"
#8	6'-8"	5'-2"
#9	7'-7"	5'-10"
#10	8'-6"	6'-7"
#11	9'-5"	7'-3"

ALL TOP BARS ARE DEFINED AS HORIZ BARS WITH MORE THAN 12" OF CONCRETE BELOW BARS.

**ALL BARS IN THIS DRAWING
ASTM A615 GRADE 60
BLACK UNCOATED**

TYPICAL REINFORCING BAR CLEARANCE TABLE	
LOCATION	MIN. COVER
FOUNDATION BOTTOM & SIDES	3" CLR
FOUNDATION TOP	2" CLR
FOUNDATION WALL	2" CLR

REBAR GRADE 60 ASTM A-615

SPICES USED		ABBREVIATIONS		BAR MARK SIZE EQUIVALENT	
CLASS B 4,000 psi UNO				Imperial	Soft Metric
TOP BARS	OTHER BARS	ADD. = Additional	B.O.W. = Bottom of wall	#3	#10
#3 24"	#3 19"	C.B. = Corner Bars	DIAG. = Diagonal	#4	#13
#4 32"	#4 25"	D.O. = Door Opening	D.W.L.S. = Dowels	#5	#16
#5 40"	#5 31"	E.F. = Each Face	E.S. = Each Side	#6	#19
#6 48"	#6 37"	E.W. = Each Way	FTG. = Footing	#7	#22
#7 70"	#7 54"	F.F. = Far Face	HORIZ. = Horizontal	#8	#25
#8 80"	#8 62"	I.F. = Inside Face	INTERS. = Intersection	#9	#29
#9 91"	#9 70"	L.W. = long Way	N.F. = Near Face	#10	#32
#10 102"	#10 79"	O.F. = Outside Face	S.W. = Short Way	#11	#36
#11 113"	#11 87"	T&B = Top & Bottom	T.O.W. = Top of Wall		
#14		Trans. = Transverse	VERT. = Vertical		

CITY OF HYATTSVILLE
FOUNDATION REINFORCEMENT DETAILS
3505 HAMILTON STREET HYATTSVILLE, MD 20782
CUSTOMER:
DESIGNER: COLUMBIA ENGINEERING
DRAWN BY: DATE: JOB NO: SHEET NO:
ADL/MET 06.14.22 - R05

REV NO	DATE	SENT FOR	REV NO	DATE	SENT FOR
0	06.14.22	APPROVAL			