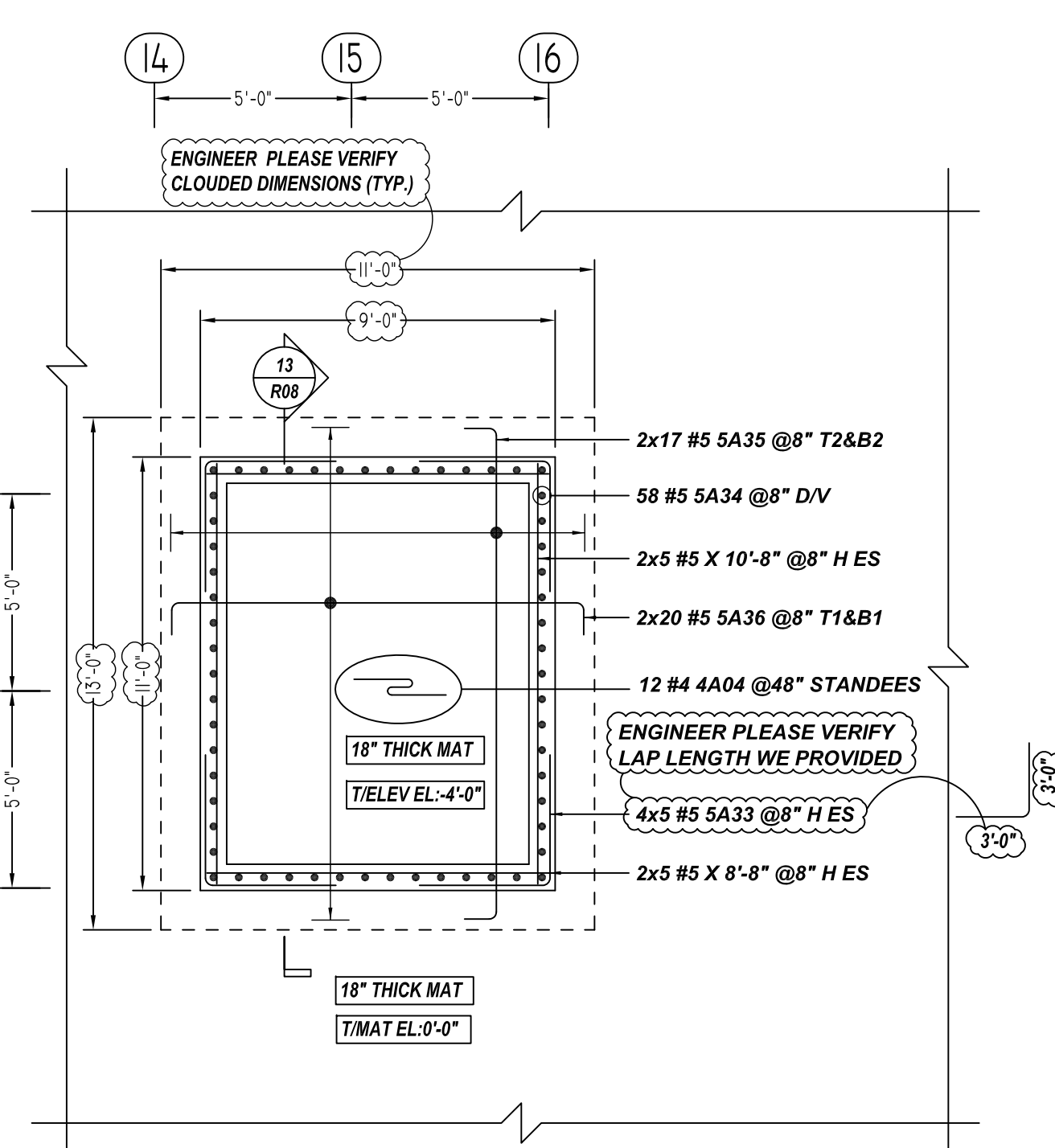
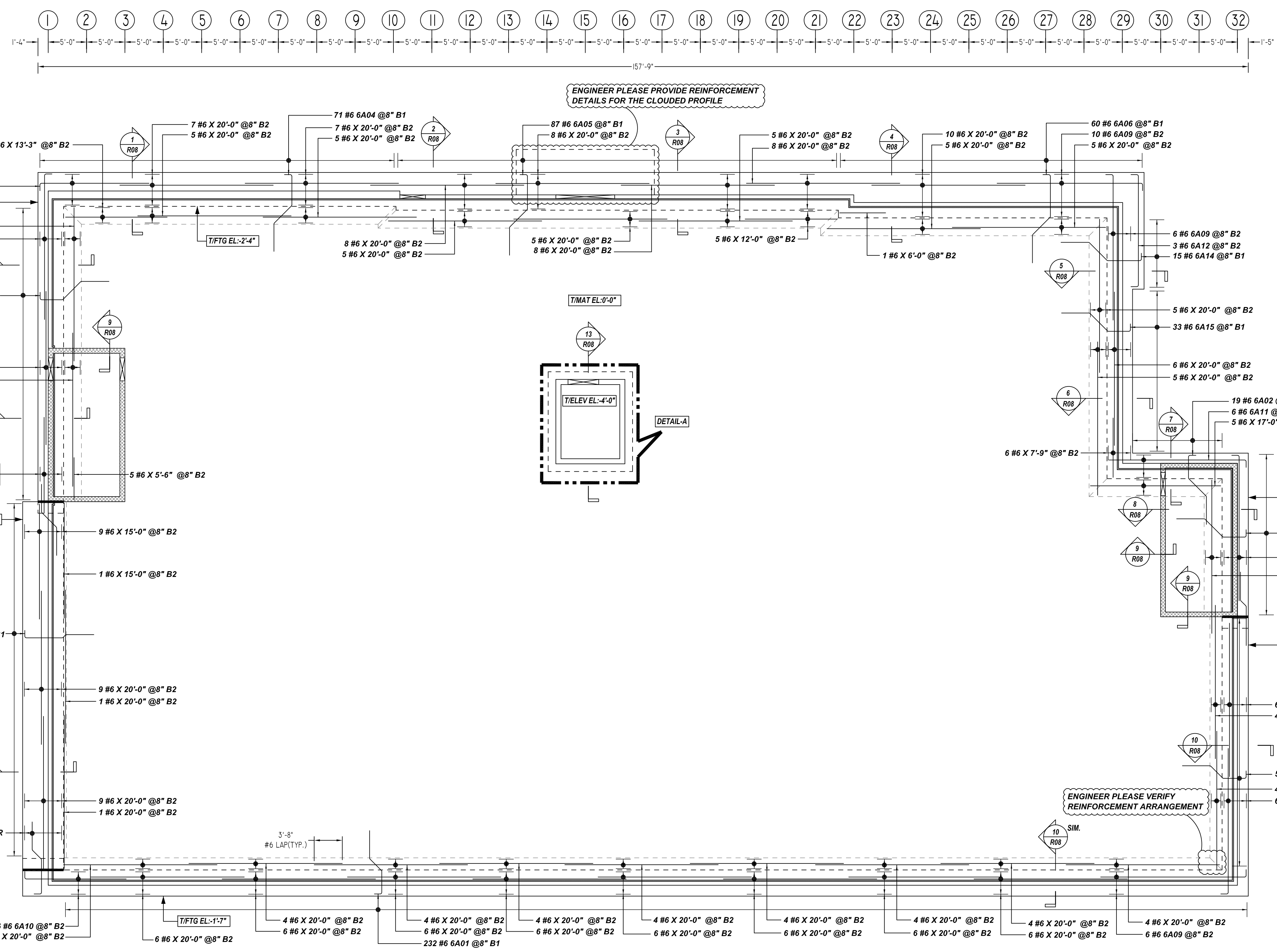


**NOTICE**

SHORTAGES, IMPROPER FABRICATION OR CLAIMS FOR ANY OTHER REASON MUST BE REPORTED TO THIS COMPANY WITHIN 10 DAYS FROM ORIGINAL DELIVERY. THIS COMPANY ALSO RESERVES THE RIGHT TO FIELD INSPECT MATERIALS PRIOR TO REPLACEMENT OR RECONDITIONING OF MATERIALS AND WILL NOT BE LIABLE FOR CHARGES FROM WORK DONE IN THE FIELD WITHOUT PRIOR AUTHORIZATION FROM THIS COMPANY.

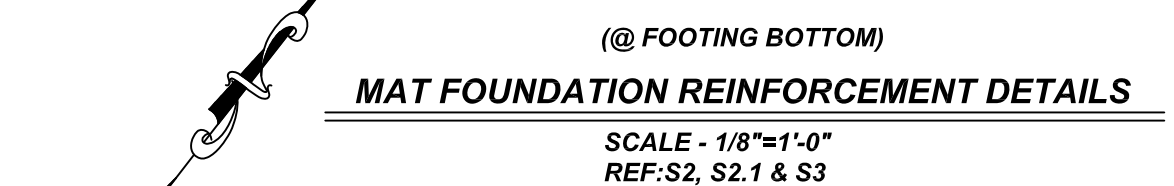
REINFORCING STEEL PLACING DRAWING ONLY. USE IN CONJUNCTION WITH CONTRACT DRAWINGS & SPECIFICATIONS. ELEVATIONS & DIMENSIONS SHOWN ON DRAWING ARE FOR DETAILING PURPOSES ONLY AND SHOULD NOT BE USED FOR CONSTRUCTION UNLESS VERIFIED BY ENGINEER OR CONTRACTOR.



**DETAIL-A**  
SCALE - 1/4"=1'-0"  
REF: S3 & S6

Release Number: R01

Bar Mark	Qty	Size	Total Length	Type	X	Y	Z	W	V	U	T	S	R	Q	P	O	N	M	L	K	J	I	H	G	F	E	D	C	B	A
A04	12	#4	5'-5"	25		1'-6"	0'-10"		0'-8"	0'-10"	1'-6"		0'-10"		0'-5"															
S43	20	#5	6'-8"	17		3'-4"	3'-4"																							
S44	36	#5	8'-11"	20		3'-4"	4'-8"		0'-10"																					
S45	34	#5	14'-2"	2		0'-10"	12'-5"						0'-10"																	
S46	40	#5	12'-2"	1		0'-10"	10'-5"						0'-10"																	
A01	232	#6	9'-11"	4		1'-0"	3'-0"		2'-3"	3'-8"				1'-7"		1'-6"		8'-3"												
A02	19	#6	11'-0"	4		1'-0"	3'-0"		3'-3"	3'-8"				2'-4"		2'-3"		9'-0"												
A03	5	#6	10'-1"	3		3'-8"	2'-8"		3'-8"					2'-0"		1'-11"		9'-3"												
A04	74	#6	12'-0"	4		1'-0"	4'-0"		3'-3"	3'-8"				2'-4"		2'-3"		10'-0"												
A05	81	#6	12'-6"	4		1'-0"	4'-6"		3'-3"	3'-8"				2'-4"		2'-3"		10'-6"												
A06	60	#6	13'-6"	4		1'-0"	5'-6"		3'-3"	3'-8"				2'-4"		2'-3"		11'-6"												
A07	6	#6	4'-11"	3		3'-8"	1'-0"		5'-1"					0'-8"		0'-8"		9'-6"												
A08	9	#6	10'-11"	4		1'-0"	4'-6"		1'-8"	3'-8"				1'-3"		1'-3"		9'-5"												
A09	38	#6	20'-0"	2		1'-0"	19'-0"																							
A10	6	#6	14'-3"	2		1'-0"	13'-3"																							
A11	6	#6	18'-11"	2		1'-0"	17'-11"																							
A12	3	#6	16'-8"	2		1'-0"	14'-8"							1'-0"																
A13	7	#6	15'-3"	2		1'-0"	14'-3"																							
A14	19	#6	12'-6"	4		1'-0"	4'-6"		3'-4"	3'-8"				2'-4"		2'-4"		10'-5"												
A15	34	#6	11'-0"	4		1'-0"	2'-11"		3'-4"	3'-8"				2'-5"		2'-4"		9'-0"												
A16	33	#6	11'-1"	4		1'-0"	3'-0"		3'-4"	3'-8"				2'-5"		2'-4"		9'-1"												
A17	50	#6	10'-0"	4		1'-0"	3'-0"		2'-3"	3'-8"				1'-8"		1'-7"		8'-4"												
A18	70	#6	10'-3"	4		1'-0"	4'-11"		0'-7"	3'-8"				0'-5"		0'-4"		9'-0"												

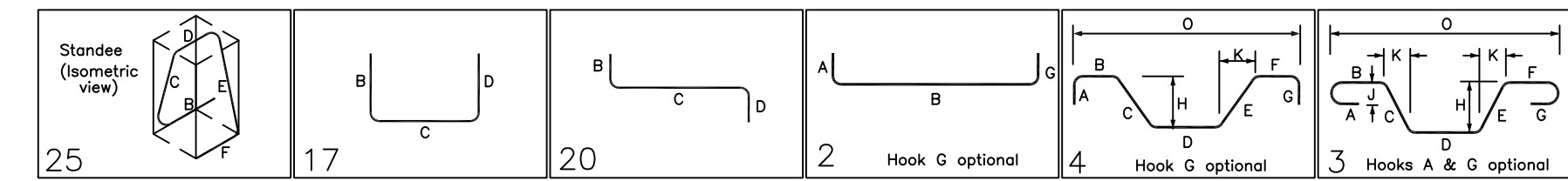


**TYPICAL REINFORCING BAR CLEARANCE TABLE**

LOCATION	MIN. COVER
FOUNDATION AT BOTTOM & SIDES	3" CLR
FOUNDATION AT TOP	2" CLR

ENGINEER PLEASE VERIFY COVER VALUE

**ALL BARS IN THIS DRAWING  
ASTM A615 GRADE 60  
BLACK UNCOATED**



**REBAR GRADE 60 ASTM A-615**

**SPLICES USED**

CLASS B, 4,000 psi UNO

**FOOTING & MAT SLAB**

Bar Mark	Size
#3	22"
#4	30"
#5	36"
#6	44"
#7	54"
#8	71"
#9	90"
#10	115"
#11	141"

**ABBREVIATIONS**

- ADD. = Additional
- B.O.W. = Bottom of wall
- C.B. = Corner Bars
- DIAG. = Diagonal
- D.O. = Door Opening
- DWLS. = Dowels
- E.F. = Each Face
- E.S. = Each Side
- E.W. = Each Way
- FTG. = Footing
- F.F. = Far Face
- HORIZ. = Horizontal
- I.F. = Inside Face
- INTERS. = Intersection
- L.W. = long Way
- N.F. = Near Face
- O.F. = Outside Face
- S.W. = Short Way
- T&B. = Top & Bottom
- T.O.W. = Top of Wall
- Trans. = Transverse
- VERT. = Vertical

**BAR MARK SIZE EQUIVALENT**

Imperial	Soft Metric
#3	#10
#4	#13
#5	#16
#6	#19
#7	#22
#8	#25
#9	#29
#10	#32
#11	#36

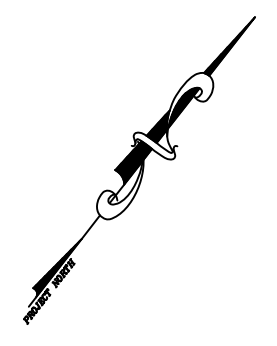
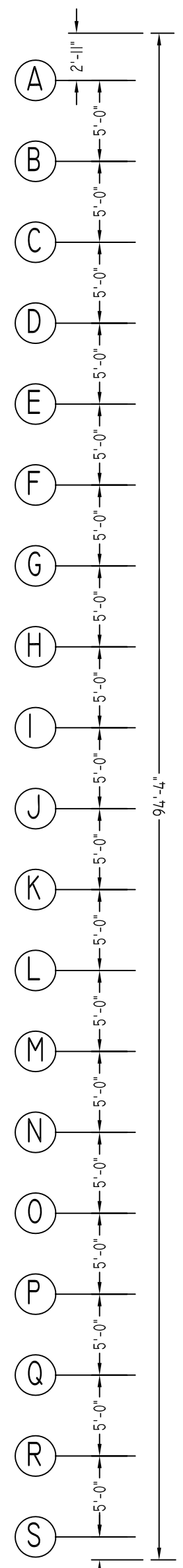
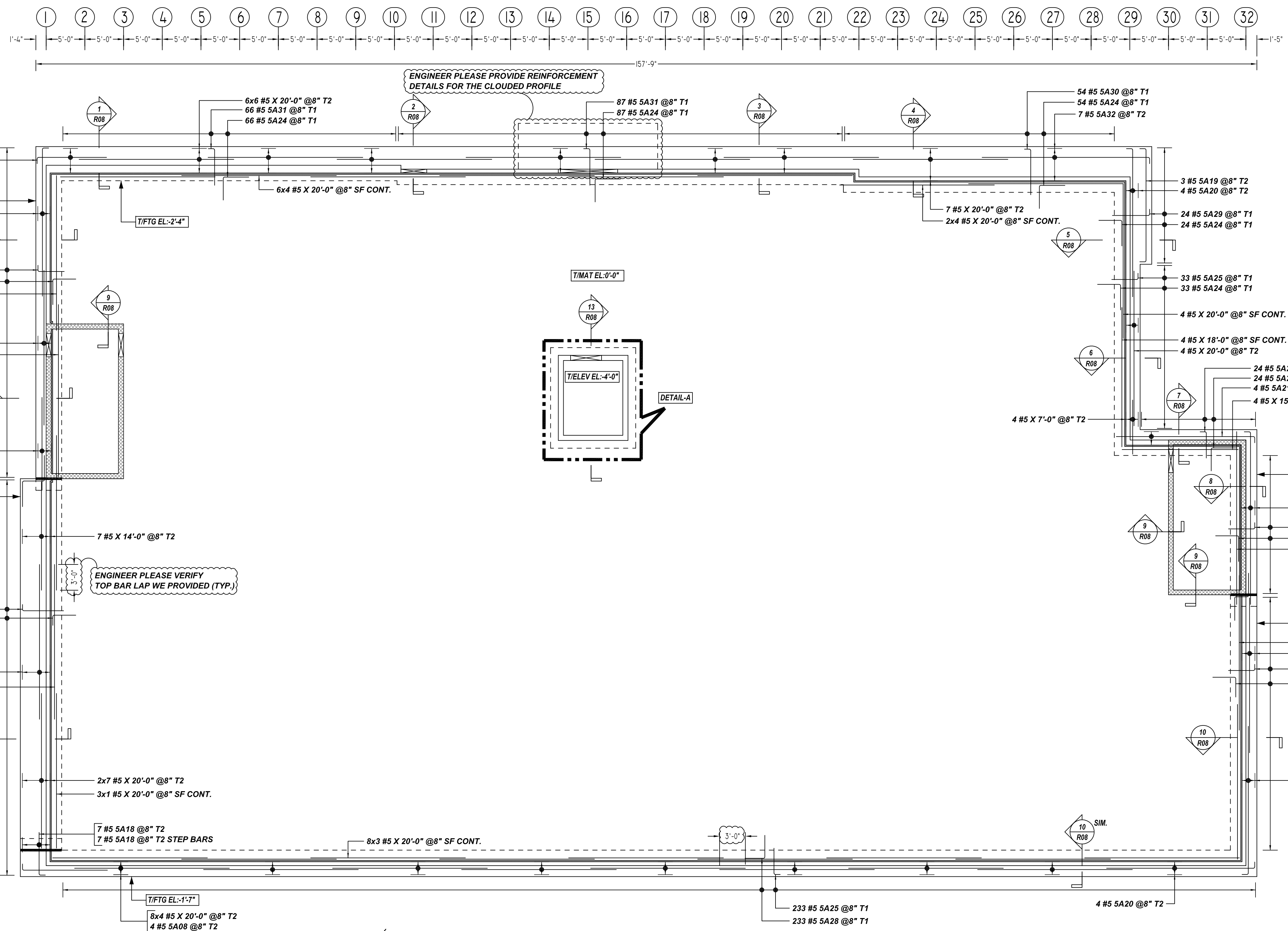
**LIFE STORAGE #662**  
MAT FOUNDATION REINFORCEMENT DETAILS  
**DUNDALK, MD 21222 BALTIMORE COUNTY**  
CUSTOMER:-  
DESIGNER: BE STRUCTURAL PC

REV NO	DATE	APPROVAL	SENT FOR	REV NO	DATE	SENT FOR	DRAWN BY	DATE	JOB NO	SHEET NO.
0	09.07.21						KMS/MET	09.07.21	-	R01

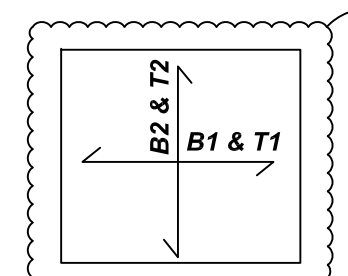
**NOTICE**

SHORTAGES, IMPROPER FABRICATION OR CLAIMS FOR ANY OTHER REASON MUST BE REPORTED TO THIS COMPANY WITHIN 10 DAYS FROM ORIGINAL DELIVERY. THIS COMPANY ALSO RESERVES THE RIGHT TO FIELD INSPECT MATERIALS PRIOR TO REPLACEMENT OR RECONDITIONING OF MATERIALS AND WILL NOT BE LIABLE FOR CHARGES FROM WORK DONE IN THE FIELD WITHOUT PRIOR AUTHORIZATION FROM THIS COMPANY.

REINFORCING STEEL PLACING DRAWING ONLY. USE IN CONJUNCTION WITH CONTRACT DRAWINGS & SPECIFICATIONS. ELEVATIONS & DIMENSIONS SHOWN ON DRAWING ARE FOR DETAILING PURPOSES ONLY AND SHOULD NOT BE USED FOR CONSTRUCTION UNLESS VERIFIED BY ENGINEER OR CONTRACTOR.



**MAT FOUNDATION REINFORCEMENT DETAILS**  
SCALE - 1/8"=1'-0"  
REF: S2, S1 & S3



ENGINEER PLEASE VERIFY REINFORCEMENT DIRECTION WE DETAILED

Release Number: R02

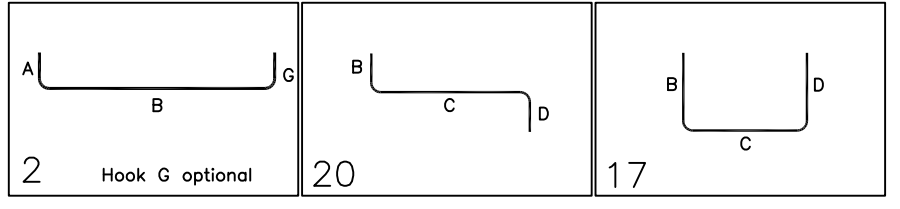
Bar Mark	Qty	Size	Total Length	Type	X'	Y'	Z'	W'	V'	U'	T'	S'	R'	Q'	P'	O'	N'	M'	L'	K'	J'	I'	H'	G'	F'	E'	D'	C'	B'	A'
S403	6	#5	9'-10"	2	0'-10"	9'-0"																								
S408	4	#5	11'-10"	2	0'-10"	11'-0"																								
S411	4	#5	23'-2"	2	0'-10"	22'-4"																								
S418	14	#5	6'-4 1/2"	2	0'-10"	5'-6 3/4"																								
S419	3	#5	16'-4"	2	0'-10"	14'-8"																								
S420	16	#5	20'-0"	2	0'-10"	19'-2"																								
S421	4	#5	18'-0"	2	0'-10"	17'-11"																								
S422	5	#5	9'-6 1/2"	20	3'-4"	2'-10 3/4"	3'-4"																							
S423	4	#5	7'-11 1/2"	20	3'-1"	1'-10"	3'-0 1/2"																							
S424	38	#5	6'-4 1/2"	17	3'-4"	3'-0"																								
S425	433	#5	4'-3 1/2"	2	0'-10"	3'-5"																								
S428	78	#5	4'-4 1/2"	17	1'-4"	3'-0"																								
S427	78	#5	6'-2"	2	0'-10"	5'-4"																								
S428	283	#5	5'-7 1/2"	17	2'-7"	3'-0"																								
S429	24	#5	5'-8 1/2"	2	0'-10"	4'-10"																								
S430	34	#5	6'-3 1/2"	2	0'-10"	5'-11"																								
S431	153	#5	5'-7 1/2"	2	0'-10"	4'-9"																								
S432	7	#5	22'-4 1/2"	2	0'-10"	21'-8"																								

**TYPICAL REINFORCING BAR CLEARANCE TABLE**

LOCATION	MIN. COVER
FOUNDATION AT BOTTOM & SIDES	3" CLR
FOUNDATION AT TOP	2" CLR

ENGINEER PLEASE VERIFY COVER VALUE

**ALL BARS IN THIS DRAWING  
ASTM A615 GRADE 60  
BLACK UNCOATED**



**REBAR GRADE 60 ASTM A-615**

SPLICES USED		ABBREVIATIONS		BAR MARK SIZE EQUIVALENT	
CLASS B 4,000 psi UNO		ADD. = Additional		Imperial	Soft Metric
FOOTING & MAT SLAB		B.O.W. = Bottom of wall		#3	#10
#3	22"	C.B. = Corner Bars		#4	#13
#4	30"	DIAG. = Diagonal		#5	#16
#5	36"	D.O. = Door Opening		#6	#19
#6	44"	DWLS. = Dowels		#7	#22
#7	54"	E.F. = Each Face		#8	#25
#8	71"	E.S. = Each Side		#9	#29
#9	90"	E.W. = Each Way		#10	#32
#10	115"	FTG. = Footing		#11	#36
#11	141"	F.F. = Far Face			
		HORIZ. = Horizontal			
		I.F. = Inside Face			
		INTERS. = Intersection			
		L.W. = long Way			
		N.F. = Near Face			
		O.F. = Outside Face			
		S.W. = Short Way			
		T&B = Top & Bottom			
		T.O.W. = Top of Wall			
		Trans. = Transverse			
		VERT. = Vertical			

**LIFE STORAGE #662**  
MAT FOUNDATION REINFORCEMENT DETAILS  
**DUNDALK, MD 21222 BALTIMORE COUNTY**

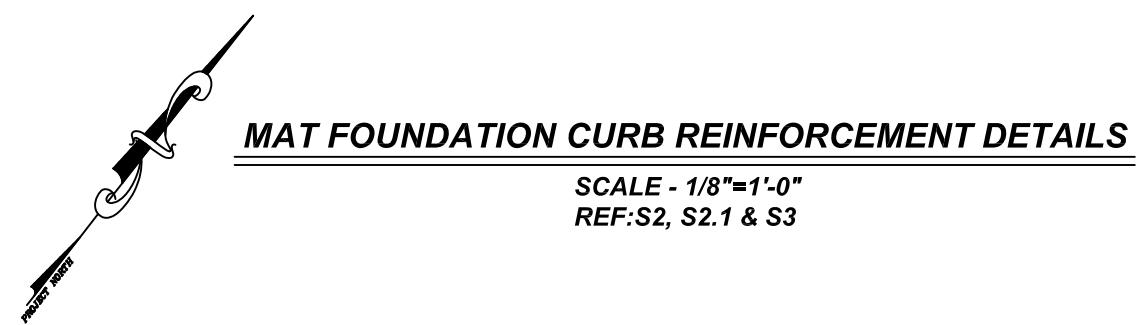
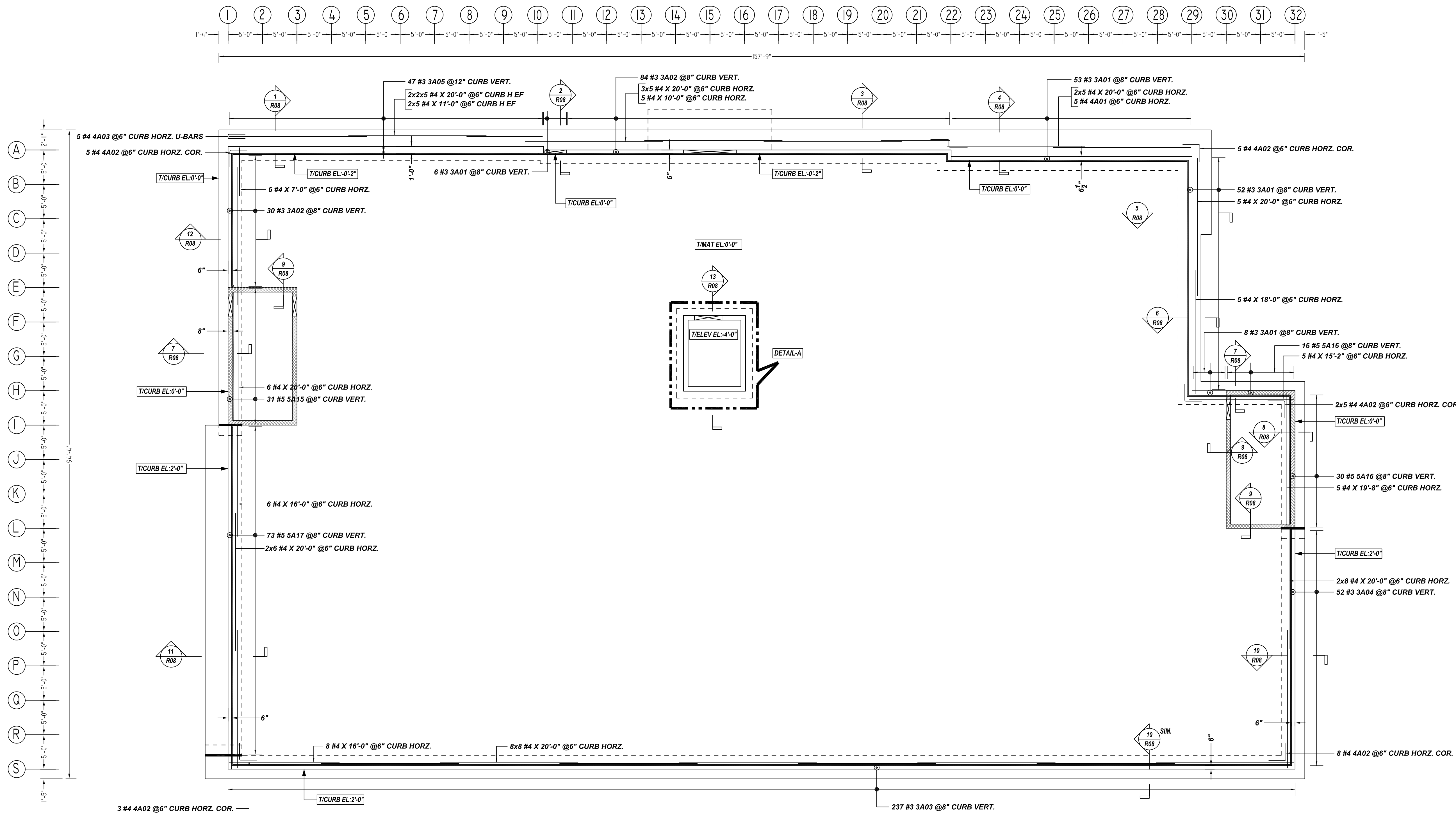
CUSTOMER: -  
DESIGNER: BE STRUCTURAL PC

REV NO	DATE	APPROVAL	SENT FOR	REV NO	DATE	SENT FOR	DRAWN BY	DATE	JOB NO	SHEET NO.
0	09.07.21						KMS/MET	09.07.21	-	R02

**NOTICE**

SHORTAGES, IMPROPER FABRICATION OR CLAIMS FOR ANY OTHER REASON MUST BE REPORTED TO THIS COMPANY WITHIN 10 DAYS FROM ORIGINAL DELIVERY. THIS COMPANY ALSO RESERVES THE RIGHT TO FIELD INSPECT MATERIALS PRIOR TO REPLACEMENT OR RECONDITIONING OF MATERIALS AND WILL NOT BE LIABLE FOR CHARGES FROM WORK DONE IN THE FIELD WITHOUT PRIOR AUTHORIZATION FROM THIS COMPANY.

REINFORCING STEEL PLACING DRAWING ONLY. USE IN CONJUNCTION WITH CONTRACT DRAWINGS & SPECIFICATIONS. ELEVATIONS & DIMENSIONS SHOWN ON DRAWING ARE FOR DETAILING PURPOSES ONLY AND SHOULD NOT BE USED FOR CONSTRUCTION UNLESS VERIFIED BY ENGINEER OR CONTRACTOR.



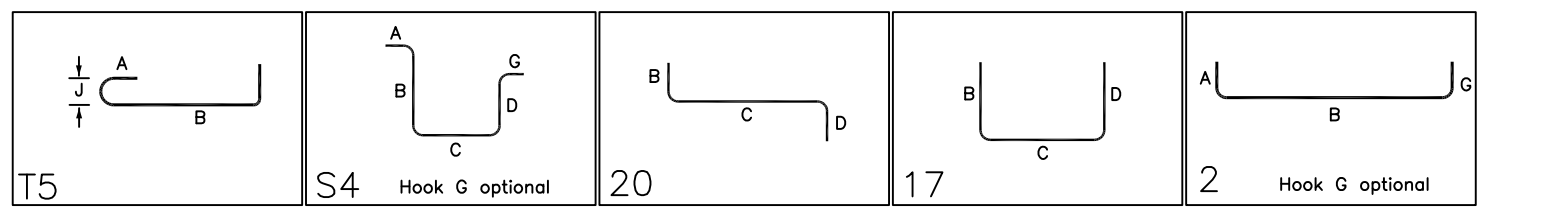
Release Number: R03

Bar Mark	Qty	Size	Total Length	Type	X'	Y'	Z'	T'	U'	V'	W'	X'	Y'	Z'	T'	U'	V'	W'
3A01	119	#3	4'-0"	15	0'-5"	3'-3"					0'-4"							
3A02	114	#3	3'-10"	15	0'-5"	3'-1"					0'-4"							
3A03	237	#3	5'-3 1/2"	15	0'-5"	4'-6 1/2"					0'-4"							
3A04	50	#3	5'-3"	15	0'-5"	4'-6"					0'-4"							
3A05	67	#3	7'-4 1/2"	14	0'-4"	5'-1"	0'-5"	3'-1"			0'-4"							
4A01	5	#4	6'-6 1/2"	20	2'-8"	1'-2"	2'-8 1/2"				0'-4"							
4A02	3	#4	5'-0"	17	2'-8"	2'-8"					0'-4"							
4A03	5	#4	5'-8"	17	2'-8"	2'-8"					0'-4"							
5A15	3	#5	6'-6"	2	0'-10"	5'-8"					0'-6"							
5A16	46	#5	6'-7"	2	0'-10"	5'-9"					0'-6"							
5A17	73	#5	4'-4 1/2"	15	0'-7"	3'-3"					0'-6"							

LOCATION	MIN. COVER
FOUNDATION AT BOTTOM & SIDES	3" CLR
FOUNDATION AT TOP	2" CLR

ENGINEER PLEASE VERIFY COVER VALUE

**ALL BARS IN THIS DRAWING  
ASTM A615 GRADE 60  
BLACK UNCOATED**



**REBAR GRADE 60 ASTM A-615**

SPLICES USED		ABBREVIATIONS		BAR MARK SIZE EQUIVALENT	
CLASS B 4,000 psi UNO		ADD. = Additional		Imperial	Soft Metric
FOOTING & MAT SLAB		B.O.W. = Bottom of wall		#3	#10
#3	22"	C.B. = Corrug Bars		#4	#13
#4	30"	DIAG. = Diagonal		#5	#16
#5	36"	D.O. = Door Opening		#6	#19
#6	44"	DWLS. = Dowels		#7	#22
#7	54"	E.F. = Each Face		#8	#25
#8	71"	E.S. = Each Side		#9	#29
#9	90"	E.W. = Each Way		#10	#32
#10	115"	F.F. = Far Face		#11	#36
#11	141"	HORIZ. = Horizontal			
		I.F. = Inside Face			
		INTERS. = Intersection			
		L.W. = Long Way			
		N.F. = Near Face			
		O.F. = Outside Face			
		S.W. = Short Way			
		T&B = Top & Bottom			
		T.O.W. = Top of Wall			
		Trans. = Transverse			
		VERT. = Vertical			

**LIFE STORAGE #662**  
MAT FOUNDATION CURB REINFORCEMENT DETAILS  
**DUNDALK, MD 21222 BALTIMORE COUNTY**  
CUSTOMER:-

DESIGNER: BE STRUCTURAL PC

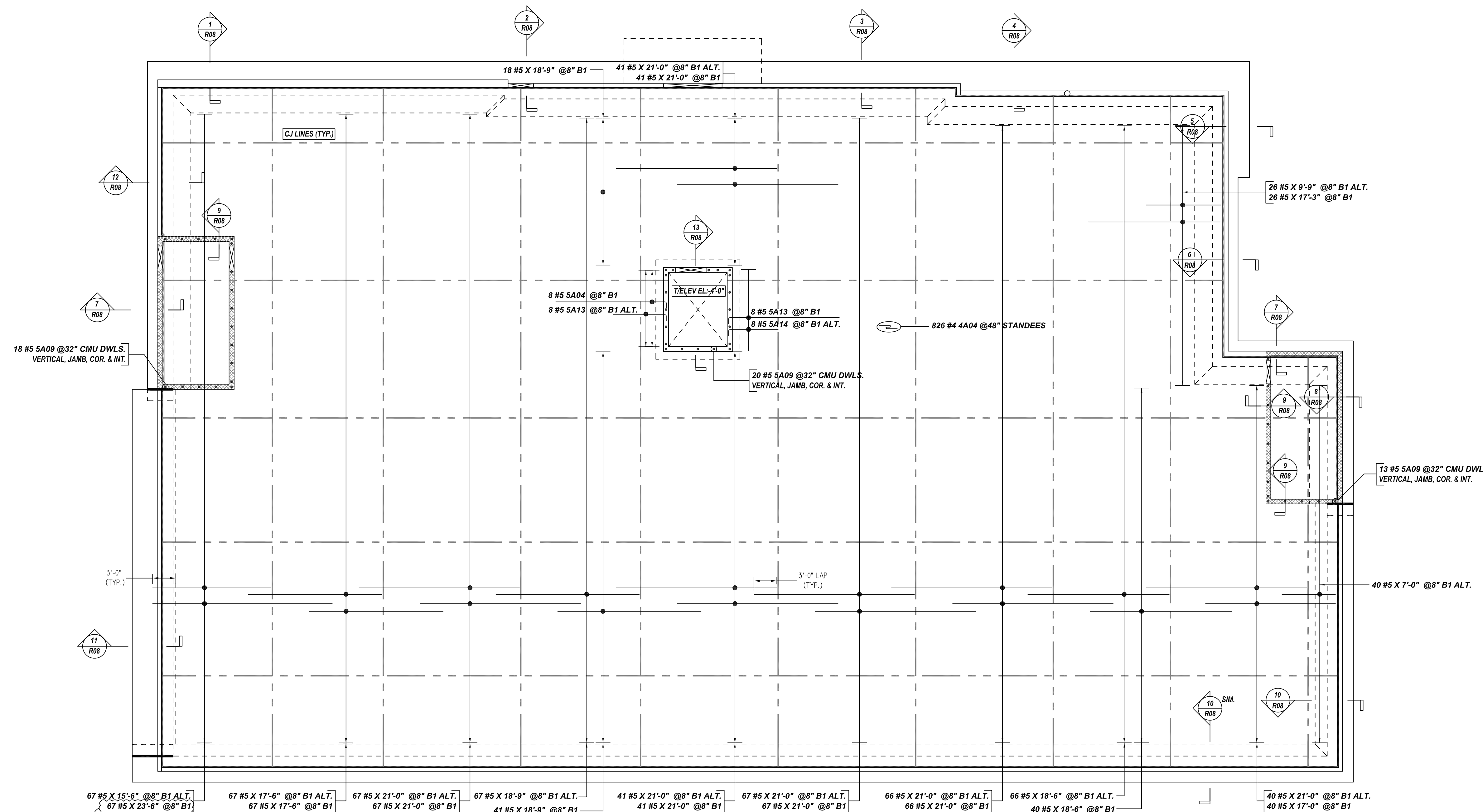
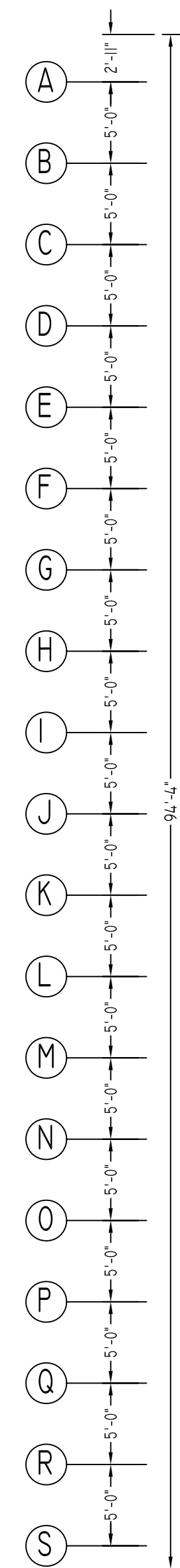
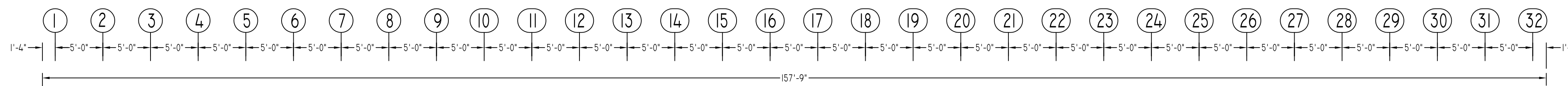
REV NO	DATE	APPROVAL	SENT FOR	REV NO	DATE	SENT FOR
0	09.07.21					

DRAWN BY	DATE	JOB NO	SHEET NO.
KMS/MET	09.07.21	-	R03

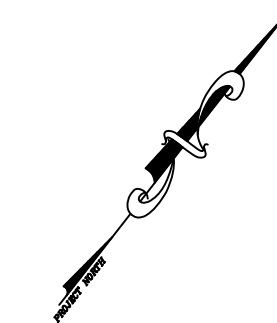
**NOTICE**

SHORTAGES, IMPROPER FABRICATION OR CLAIMS FOR ANY OTHER REASON MUST BE REPORTED TO THIS COMPANY WITHIN 10 DAYS FROM ORIGINAL DELIVERY. THIS COMPANY ALSO RESERVES THE RIGHT TO FIELD INSPECT MATERIALS PRIOR TO REPLACEMENT OR RECONDITIONING OF MATERIALS AND WILL NOT BE LIABLE FOR CHARGES FROM WORK DONE IN THE FIELD WITHOUT PRIOR AUTHORIZATION FROM THIS COMPANY.

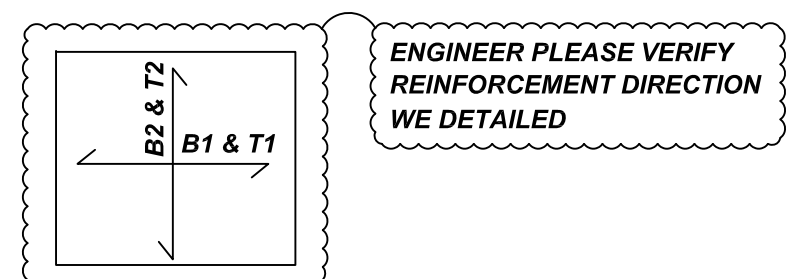
REINFORCING STEEL PLACING DRAWING ONLY. USE IN CONJUNCTION WITH CONTRACT DRAWINGS & SPECIFICATIONS. ELEVATIONS & DIMENSIONS SHOWN ON DRAWING ARE FOR DETAILING PURPOSES ONLY AND SHOULD NOT BE USED FOR CONSTRUCTION UNLESS VERIFIED BY ENGINEER OR CONTRACTOR.



ENGINEER PLEASE VERIFY BAR LENGTH/STOCK LENGTH WE PROVIDED (TYP.)



(@ B1 LAYER)  
**SLAB ON GRADE REINFORCEMENT DETAILS**  
 SCALE - 1/8"=1'-0"  
 REF: S2, S2.1 & S3



Release Number: R04

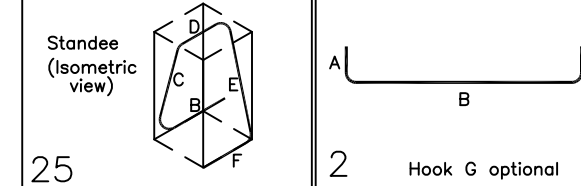
Bar Mark	Qty	Size	Total Length	Type	X'	Y'	Z'	X''	Y''	Z''	X'''	Y'''	Z'''
4A04	8	#5	5'-5 1/2"	25		1'-8"	0'-10 1/2"	0'-8"	0'-10 1/2"	1'-8"	0'-10 1/2"	0'-5 1/2"	
5A04	8	#5	7'-10"	2	0'-10"	7'-0"							
5A09	16	#5	4'-4"	2	0'-10"	3'-8"							
5A13	16	#5	15'-4"	2	0'-10"	14'-0"							
5A14	8	#5	7'-4"	2	0'-10"	6'-6"							

TYPICAL REINFORCING BAR CLEARANCE TABLE

LOCATION	MIN. COVER
FOUNDATION AT BOTTOM & SIDES	3" CLR
FOUNDATION AT TOP	2" CLR

ENGINEER PLEASE VERIFY COVER VALUE

**ALL BARS IN THIS DRAWING  
 ASTM A615 GRADE 60  
 BLACK UNCOATED**



**REBAR GRADE 60 ASTM A-615**

**SPLICES USED**  
 CLASS B 4,000 psi UNO  
 FOOTING & MAT SLAB

#3	22"
#4	30"
#5	36"
#6	44"
#7	54"
#8	71"
#9	90"
#10	115"
#11	141"

**ABBREVIATIONS**  
 ADD. = Additional  
 B.O.W. = Bottom of wall  
 C.B. = Corner Bars  
 DIAG. = Diagonal  
 D.O. = Door Opening  
 DWLS. = Dowels  
 E.F. = Each Face  
 E.S. = Each Side  
 E.W. = Each Way  
 F.F. = Footing  
 F.F. = Far Face  
 HORIZ. = Horizontal  
 I.F. = Inside Face  
 INTERS. = Intersection  
 L.W. = long Way  
 N.F. = Near Face  
 O.F. = Outside Face  
 S.W. = Short Way  
 T&B = Top & Bottom  
 T.O.W. = Top of Wall  
 Trans. = Transverse  
 VERT. = Vertical

BAR MARK SIZE EQUIVALENT	
Imperial	Soft Metric
#3	#10
#4	#13
#5	#16
#6	#19
#7	#22
#8	#25
#9	#29
#10	#32
#11	#36

**LIFE STORAGE #662**  
 SLAB ON GRADE REINFORCEMENT DETAILS  
**DUNDALK, MD 21222 BALTIMORE COUNTY**  
 CUSTOMER:-

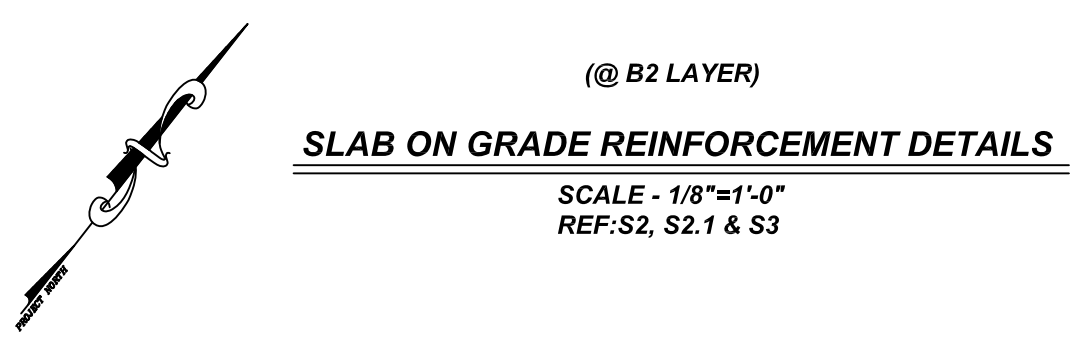
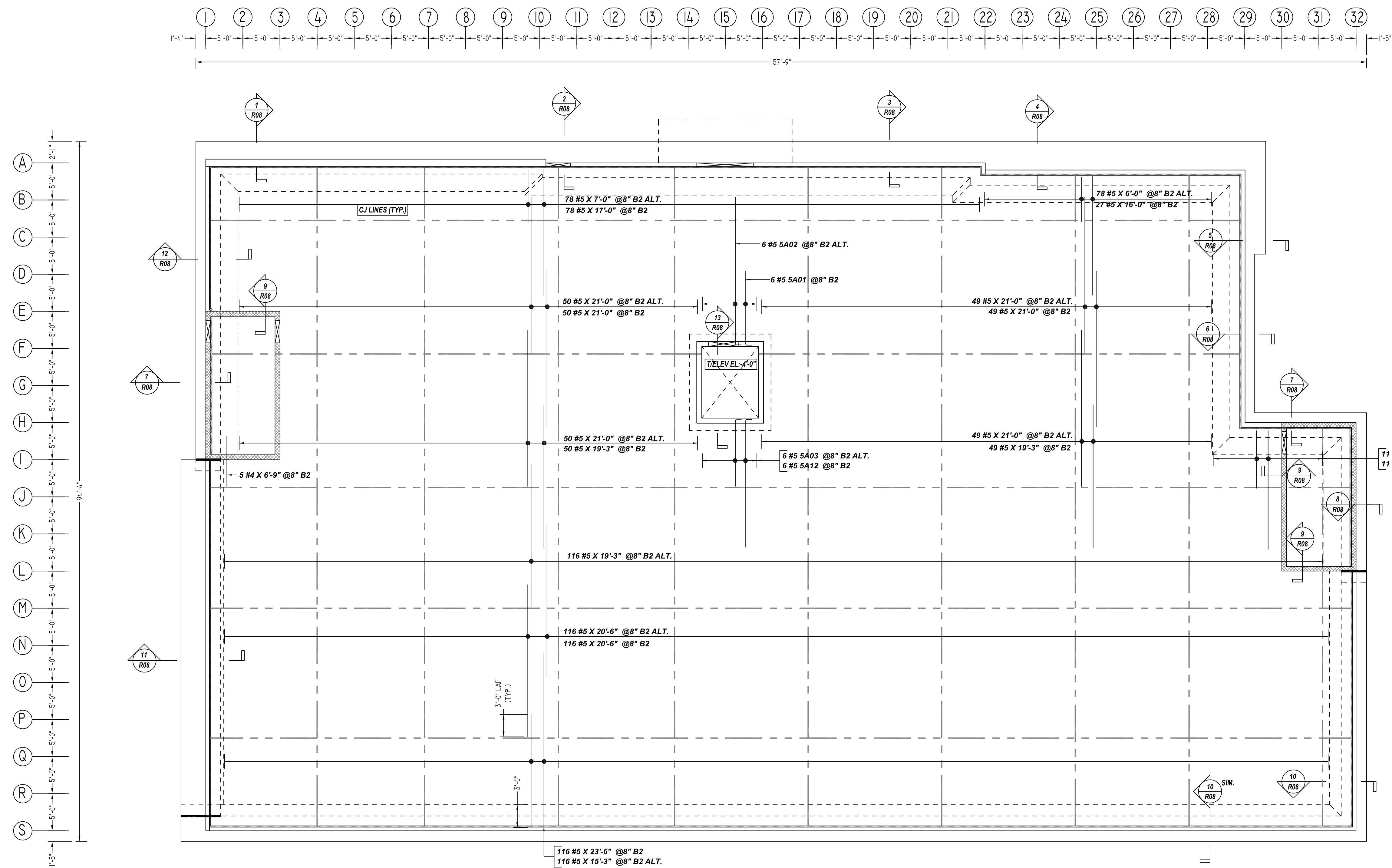
DESIGNER: BE STRUCTURAL PC	DRAWN BY	DATE	JOB NO	SHEET NO.
	KMS/MET	09.07.21	-	<b>R04</b>

REV NO	DATE	APPROVAL	REV NO	DATE	SENT FOR
0	09.07.21				

**NOTICE**

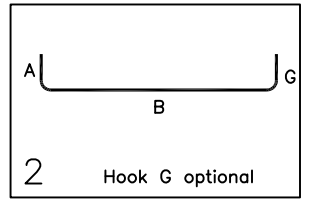
SHORTAGES, IMPROPER FABRICATION OR CLAIMS FOR ANY OTHER REASON MUST BE REPORTED TO THIS COMPANY WITHIN 10 DAYS FROM ORIGINAL DELIVERY. THIS COMPANY ALSO RESERVES THE RIGHT TO FIELD INSPECT MATERIALS PRIOR TO REPLACEMENT OR RECONDITIONING OF MATERIALS AND WILL NOT BE LIABLE FOR CHARGES FROM WORK DONE IN THE FIELD WITHOUT PRIOR AUTHORIZATION FROM THIS COMPANY.

REINFORCING STEEL PLACING DRAWING ONLY. USE IN CONJUNCTION WITH CONTRACT DRAWINGS & SPECIFICATIONS. ELEVATIONS & DIMENSIONS SHOWN ON DRAWING ARE FOR DETAILING PURPOSES ONLY AND SHOULD NOT BE USED FOR CONSTRUCTION UNLESS VERIFIED BY ENGINEER OR CONTRACTOR.



Release Number: R05

Bar Mark	Qty	Size	Total Length	Type	X'	Y'	Z'	W'	V'	U'	T'	S'	R'	Q'	P'	O'	N'	M'	L'	K'	J'	I'	H'	G'	F'	E'	D'	C'	B'	A'	
SA01	4	#5	17'-10"	2	0'-10"	17'-0"																									
SA02	4	#5	19'-0"	2	0'-10"	19'-11"																									
SA03	4	#5	9'-10"	2	0'-10"	9'-0"																									
SA12	4	#5	18'-11"	2	0'-10"	17'-3"																									



TYPICAL REINFORCING BAR CLEARANCE TABLE

LOCATION	MIN. COVER
FOUNDATION AT BOTTOM & SIDES	3" CLR
FOUNDATION AT TOP	2" CLR

ENGINEER PLEASE VERIFY COVER VALUE

**ALL BARS IN THIS DRAWING  
ASTM A615 GRADE 60  
BLACK UNCOATED**

**REBAR GRADE 60 ASTM A-615**

SPLICES USED		ABBREVIATIONS		BAR MARK SIZE EQUIVALENT	
CLASS B 4,000 psi UNO		ADD.	= Additional		
FOOTING & MAT SLAB		B.O.W.	= Bottom of wall		
#3	22"	C.B.	= Corner Bars	Imperial	Soft Metric
#4	30"	DIAG.	= Diagonal	#3	#10
#5	36"	D.O.	= Door Opening	#4	#13
#6	44"	D.W.L.S.	= Dowels	#5	#16
#7	54"	E.F.	= Each Face	#6	#19
#8	71"	E.S.	= Each Side	#7	#22
#9	90"	E.W.	= Each Way	#8	#25
#10	115"	F.F.	= Far Face	#9	#29
#11	141"	HORIZ.	= Horizontal	#10	#32
		I.F.	= Inside Face	#11	#36
		INTERS.	= Intersection		
		L.W.	= long Way		
		N.F.	= Near Face		
		O.F.	= Outside Face		
		S.W.	= Short Way		
		T&B	= Top & Bottom		
		T.O.W.	= Top of Wall		
		Trans.	= Transverse		
		VERT.	= Vertical		

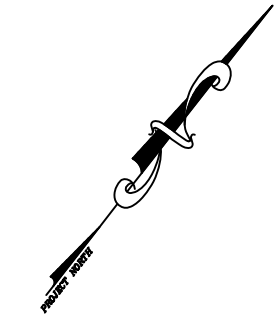
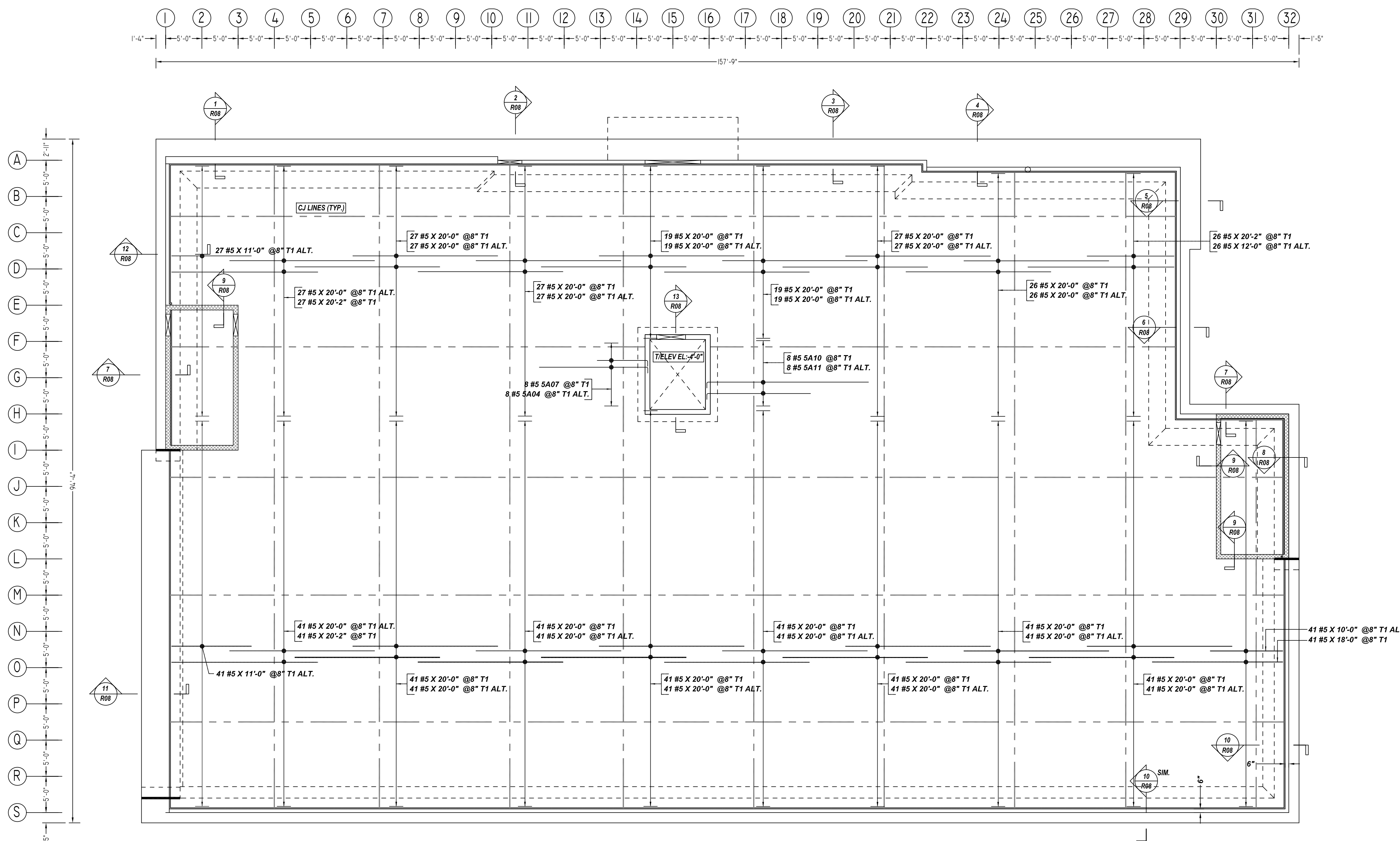
**LIFE STORAGE #662**  
SLAB ON GRADE REINFORCEMENT DETAILS  
**DUNDALK, MD 21222 BALTIMORE COUNTY**  
CUSTOMER:-  
DESIGNER: BE STRUCTURAL PC

REV NO	DATE	APPROVAL	SENT FOR	REV NO	DATE	SENT FOR	DRAWN BY	DATE	JOB NO	SHEET NO.
0	09.07.21						KMS/MET	09.07.21	-	R05

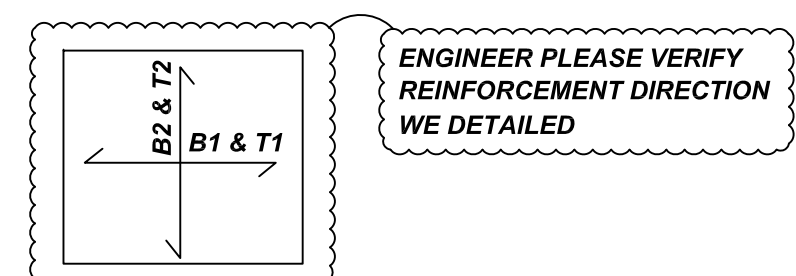
**NOTICE**

SHORTAGES, IMPROPER FABRICATION OR CLAIMS FOR ANY OTHER REASON MUST BE REPORTED TO THIS COMPANY WITHIN 10 DAYS FROM ORIGINAL DELIVERY. THIS COMPANY ALSO RESERVES THE RIGHT TO FIELD INSPECT MATERIALS PRIOR TO REPLACEMENT OR RECONDITIONING OF MATERIALS AND WILL NOT BE LIABLE FOR CHARGES FROM WORK DONE IN THE FIELD WITHOUT PRIOR AUTHORIZATION FROM THIS COMPANY.

REINFORCING STEEL PLACING DRAWING ONLY. USE IN CONJUNCTION WITH CONTRACT DRAWINGS & SPECIFICATIONS. ELEVATIONS & DIMENSIONS SHOWN ON DRAWING ARE FOR DETAILING PURPOSES ONLY AND SHOULD NOT BE USED FOR CONSTRUCTION UNLESS VERIFIED BY ENGINEER OR CONTRACTOR.

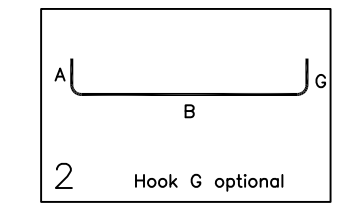


(@ T1 LAYER)  
**SLAB ON GRADE REINFORCEMENT DETAILS**  
 SCALE - 1/8"=1'-0"  
 REF: S2, S2.1 & S3



ENGINEER PLEASE VERIFY REINFORCEMENT DIRECTION WE DETAILED

Bar Mark	Qty	Size	Total Length	Type	X'	Y'	Z'	X''	Y''	Z''	X'''	Y'''	Z'''
SA04	8	#5	7'-10"	2	0'-10"	7'-0"							
SA03	8	#5	15'-10"	2	0'-10"	15'-0"							
SA10	8	#5	15'-2"	2	0'-10"	14'-4"							
SA11	8	#5	23'-2"	2	0'-10"	22'-4"							



LOCATION	MIN. COVER
FOUNDATION AT BOTTOM & SIDES	3" CLR
FOUNDATION AT TOP	2" CLR

ENGINEER PLEASE VERIFY COVER VALUE

**ALL BARS IN THIS DRAWING  
 ASTM A615 GRADE 60  
 BLACK UNCOATED**

**REBAR GRADE 60 ASTM A-615**

**SPLICES USED**

CLASS B 4,000 psi UNO

**FOOTING & MAT SLAB**

#3	22"
#4	30"
#5	36"
#6	44"
#7	54"
#8	71"
#9	90"
#10	115"
#11	141"

**ABBREVIATIONS**

- ADD. = Additional
- B.O.W. = Bottom of wall
- C.B. = Corner Bars
- DIAG. = Diagonal
- D.O. = Door Opening
- DWLS. = Dowels
- E.F. = Each Face
- E.S. = Each Side
- E.W. = Each Way
- F.F. = Far Face
- HORIZ. = Horizontal
- I.F. = Inside Face
- INTERS. = Intersection
- L.W. = long Way
- N.F. = Near Face
- O.F. = Outside Face
- S.W. = Short Way
- T&B = Top & Bottom
- T.O.W. = Top of Wall
- Trans. = Transverse
- VERT. = Vertical

**BAR MARK SIZE EQUIVALENT**

Imperial	Soft Metric
#3	#10
#4	#13
#5	#16
#6	#19
#7	#22
#8	#25
#9	#29
#10	#32
#11	#36

**LIFE STORAGE #662**  
 SLAB ON GRADE REINFORCEMENT DETAILS  
**DUNDALK, MD 21222 BALTIMORE COUNTY**

CUSTOMER: -  
 DESIGNER: BE STRUCTURAL PC

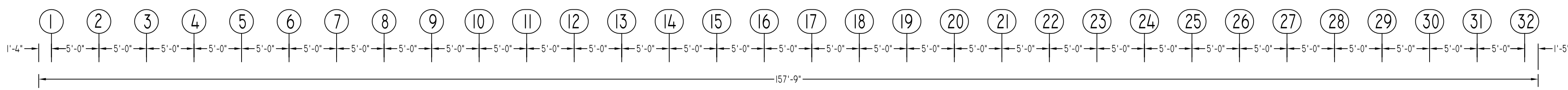
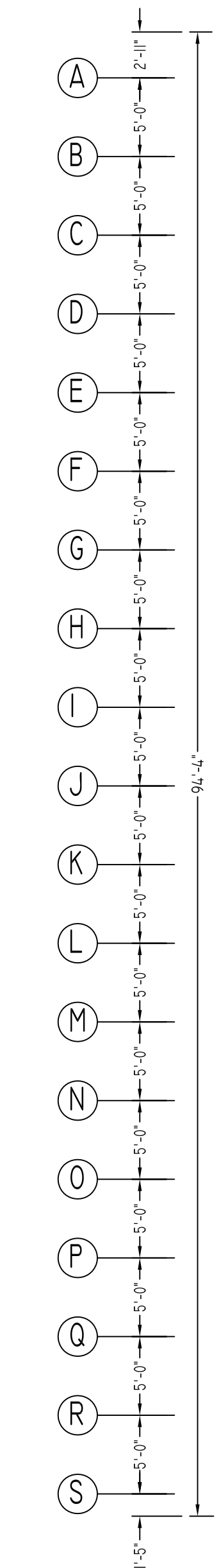
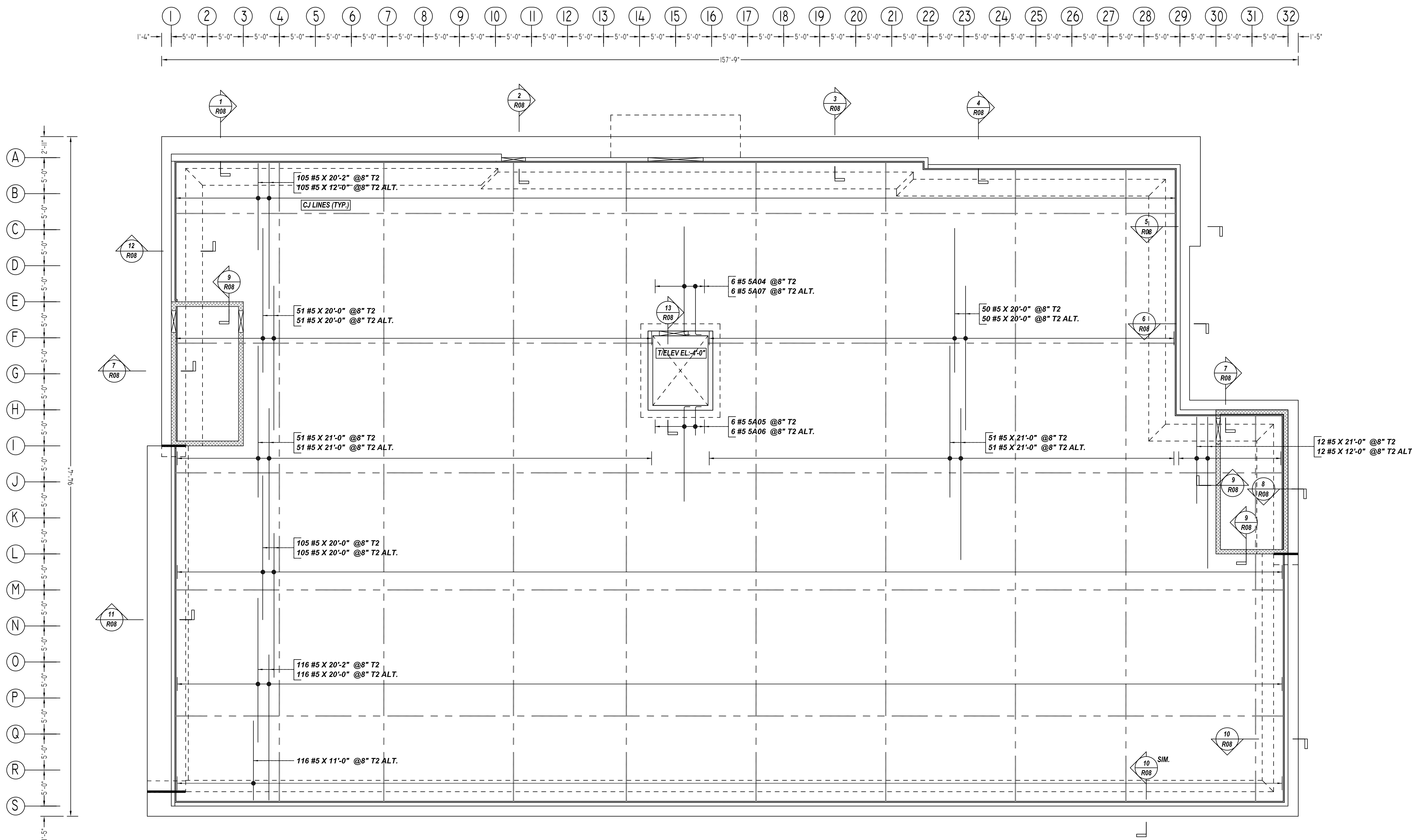
REV NO	DATE	SENT FOR	REV NO	DATE	SENT FOR
0	09.07.21	APPROVAL			

DRAWN BY	DATE	JOB NO	SHEET NO.
KMS/MET	09.07.21	-	R06

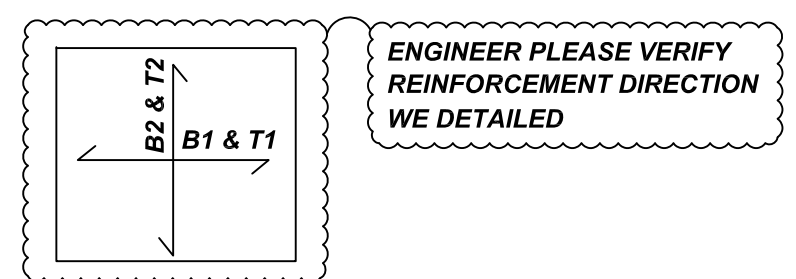
**NOTICE**

SHORTAGES, IMPROPER FABRICATION OR CLAIMS FOR ANY OTHER REASON MUST BE REPORTED TO THIS COMPANY WITHIN 10 DAYS FROM ORIGINAL DELIVERY. THIS COMPANY ALSO RESERVES THE RIGHT TO FIELD INSPECT MATERIALS PRIOR TO REPLACEMENT OR RECONDITIONING OF MATERIALS AND WILL NOT BE LIABLE FOR CHARGES FROM WORK DONE IN THE FIELD WITHOUT PRIOR AUTHORIZATION FROM THIS COMPANY.

REINFORCING STEEL PLACING DRAWING ONLY. USE IN CONJUNCTION WITH CONTRACT DRAWINGS & SPECIFICATIONS. ELEVATIONS & DIMENSIONS SHOWN ON DRAWING ARE FOR DETAILING PURPOSES ONLY AND SHOULD NOT BE USED FOR CONSTRUCTION UNLESS VERIFIED BY ENGINEER OR CONTRACTOR.



(@ T2 LAYER)  
**SLAB ON GRADE REINFORCEMENT DETAILS**  
 SCALE - 1/8"=1'-0"  
 REF: S2, S2.1 & S3



Bar Mark	Qty	Size	Total Length	Type	X	Y	Z	W	V	U	T	S	R	Q	P	O	N	M	L	K	J	I	H	G	F	E	D	C	B	A
S404	6	#5	7'-10"	2	0'-10"	7'-0"																								
S405	6	#5	4'-10"	2	0'-10"	4'-0"																								
S406	6	#5	14'-0"	2	0'-10"	13'-2"																								
S407	6	#5	15'-10"	2	0'-10"	15'-0"																								

LOCATION	MIN. COVER
FOUNDATION AT BOTTOM & SIDES	3" CLR
FOUNDATION AT TOP	2" CLR

ENGINEER PLEASE VERIFY COVER VALUE

**ALL BARS IN THIS DRAWING  
 ASTM A615 GRADE 60  
 BLACK UNCOATED**

REBAR GRADE 60 ASTM A-615		
<b>SPLICES USED</b>		
CLASS B 4,000 psi UNO		
<b>FOOTING &amp; MAT SLAB</b>		
Bar Mark	Length	Bar Mark Size
#3	22"	#10
#4	30"	#13
#5	36"	#16
#6	44"	#19
#7	54"	#22
#8	71"	#25
#9	90"	#29
#10	115"	#32
#11	141"	#36

ABBREVIATIONS	
ADD.	= Additional
B.O.W.	= Bottom of wall
C.B.	= Corner Bars
DIAG.	= Diagonal
D.O.	= Door Opening
DWLS.	= Dowels
E.F.	= Each Face
E.S.	= Each Side
E.W.	= Each Way
FTG.	= Footing
F.F.	= Far Face
HORIZ.	= Horizontal
I.F.	= Inside Face
INTERS.	= Intersection
L.W.	= long Way
N.F.	= Near Face
O.F.	= Outside Face
S.W.	= Short Way
T&B	= Top & Bottom
T.O.W.	= Top of Wall
Trans.	= Transverse
VERT.	= Vertical

**LIFE STORAGE #662**  
 SLAB ON GRADE REINFORCEMENT DETAILS  
**DUNDALK, MD 21222 BALTIMORE COUNTY**

CUSTOMER:-  
 DESIGNER: BE STRUCTURAL PC

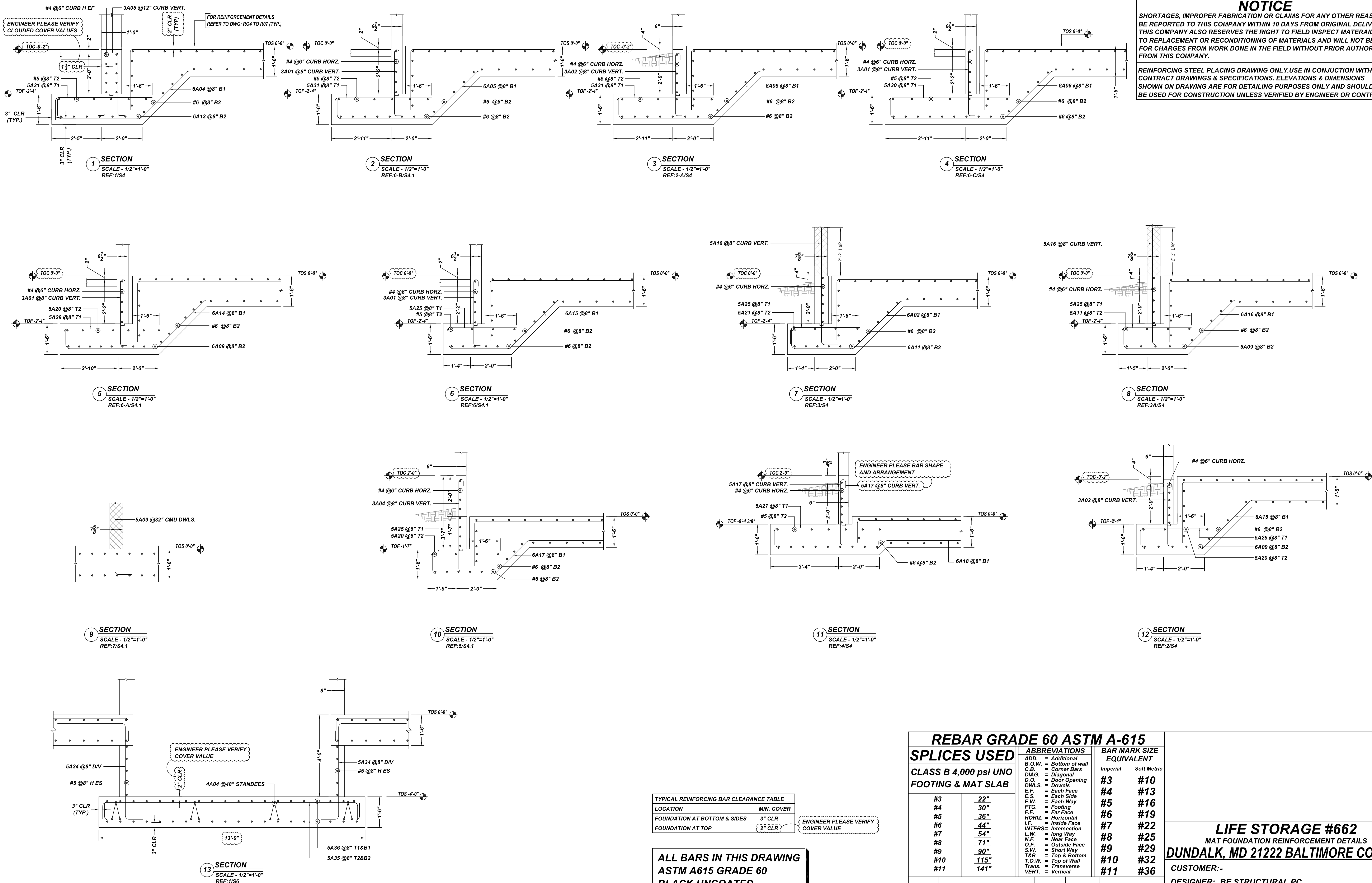
REV NO	DATE	APPROVAL	REV NO	DATE	SENT FOR
0	09.07.21				

DRAWN BY	DATE	JOB NO	SHEET NO.
KMS/MET	09.07.21	-	R07

**NOTICE**

SHORTAGES, IMPROPER FABRICATION OR CLAIMS FOR ANY OTHER REASON MUST BE REPORTED TO THIS COMPANY WITHIN 10 DAYS FROM ORIGINAL DELIVERY. THIS COMPANY ALSO RESERVES THE RIGHT TO FIELD INSPECT MATERIALS PRIOR TO REPLACEMENT OR RECONDITIONING OF MATERIALS AND WILL NOT BE LIABLE FOR CHARGES FROM WORK DONE IN THE FIELD WITHOUT PRIOR AUTHORIZATION FROM THIS COMPANY.

REINFORCING STEEL PLACING DRAWING ONLY. USE IN CONJUNCTION WITH CONTRACT DRAWINGS & SPECIFICATIONS. ELEVATIONS & DIMENSIONS SHOWN ON DRAWING ARE FOR DETAILING PURPOSES ONLY AND SHOULD NOT BE USED FOR CONSTRUCTION UNLESS VERIFIED BY ENGINEER OR CONTRACTOR.



TYPICAL REINFORCING BAR CLEARANCE TABLE

LOCATION	MIN. COVER
FOUNDATION AT BOTTOM & SIDES	3" CLR
FOUNDATION AT TOP	2" CLR

ENGINEER PLEASE VERIFY COVER VALUE

**ALL BARS IN THIS DRAWING  
ASTM A615 GRADE 60  
BLACK UNCOATED**

**REBAR GRADE 60 ASTM A-615**

SPLICES USED		ABBREVIATIONS		BAR MARK SIZE EQUIVALENT	
CLASS B 4,000 psi UNO FOOTING & MAT SLAB		ADD.	= Additional		
		B.O.W.	= Bottom of wall		
		C.B.	= Cornice Bars		
		DIAG.	= Diagonal		
		D.O.	= Door Opening		
		DWLS.	= Dowels	#3	#10
		E.F.	= Each Face	#4	#13
		E.S.	= Each Side	#5	#16
		E.W.	= Each Way	#6	#19
		FTG.	= Footing	#7	#22
		F.F.	= Far Face	#8	#25
		HORIZ.	= Horizontal	#9	#29
		I.F.	= Inside Face	#10	#32
		INTERS.	= Intersection	#11	#36
		L.W.	= Long Way		
		N.F.	= Near Face		
		O.F.	= Outside Face		
		S.W.	= Short Way		
		T&B	= Top & Bottom		
		T.O.W.	= Top of Wall		
		Trans.	= Transverse		
		VERT.	= Vertical		

**LIFE STORAGE #662**  
MAT FOUNDATION REINFORCEMENT DETAILS  
**DUNDALK, MD 21222 BALTIMORE COUNTY**

CUSTOMER:-  
DESIGNER: BE STRUCTURAL PC  
DRAWN BY: DATE: JOB NO: SHEET NO. R08  
KMS/MET 09.07.21

REV NO	DATE	APPROVAL	REV NO	DATE	SENT FOR
0	09.07.21				