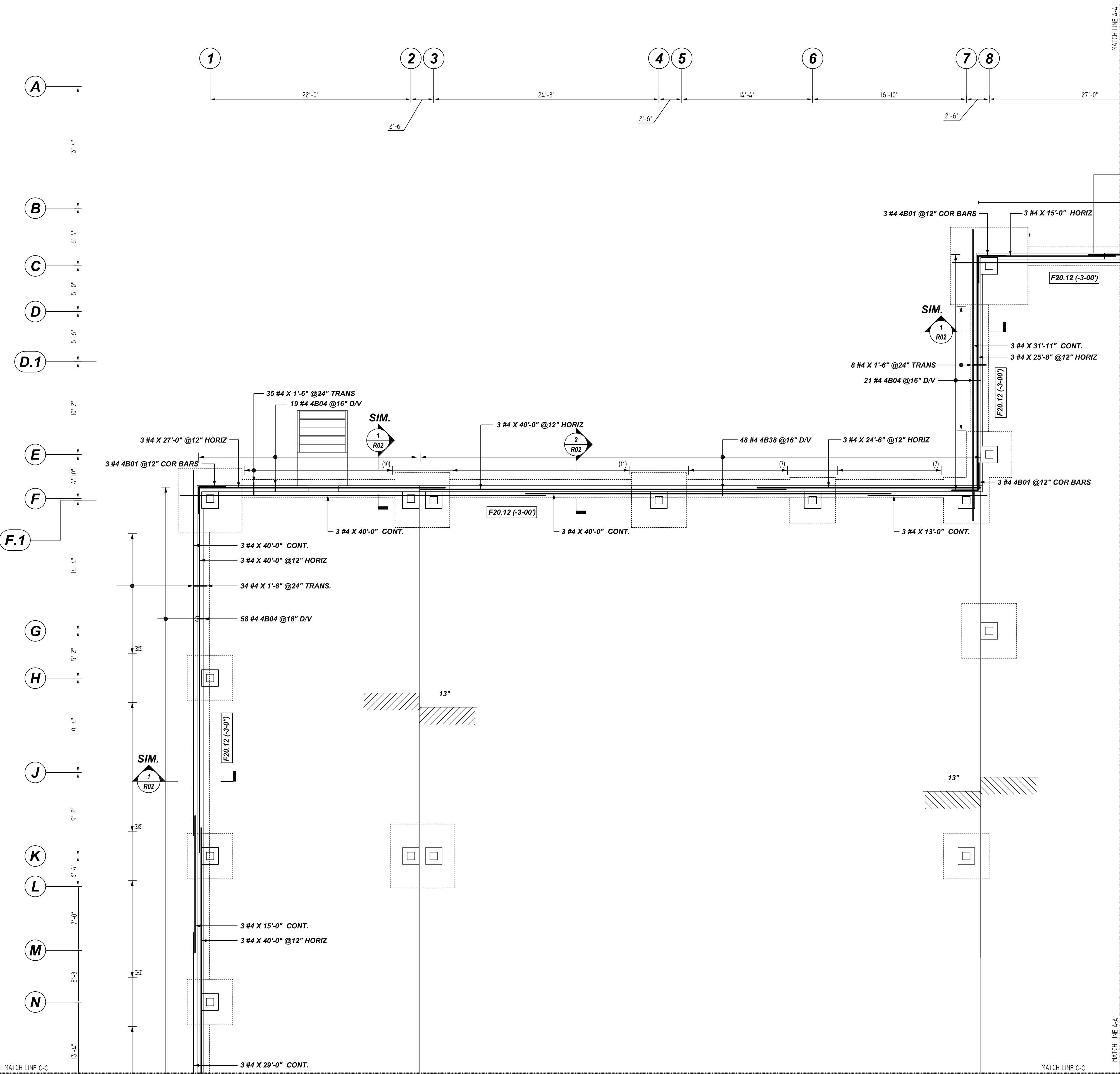


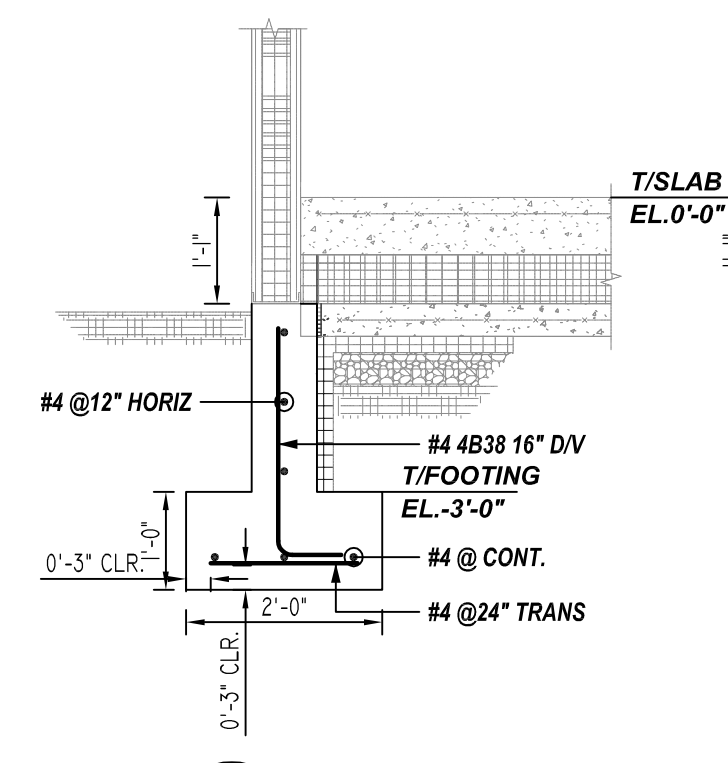
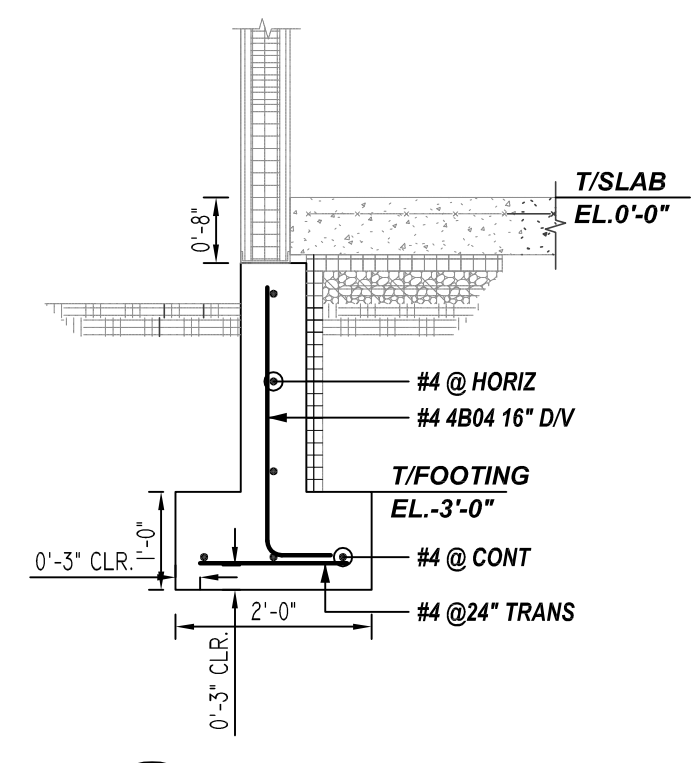
NOTICE
 SHORTAGES, IMPROPER FABRICATION OR CLAIMS FOR ANY OTHER REASON MUST BE REPORTED TO THIS COMPANY WITHIN 10 DAYS FROM ORIGINAL DELIVERY. THIS COMPANY ALSO RESERVES THE RIGHT TO FIELD INSPECT MATERIALS PRIOR TO REPLACEMENT OR RECONDITIONING OF MATERIALS AND WILL NOT BE LIABLE FOR CHARGES FROM WORK DONE IN THE FIELD WITHOUT PRIOR AUTHORIZATION FROM THIS COMPANY.

REINFORCING STEEL PLACING DRAWING ONLY. USE IN CONJUNCTION WITH CONTRACT DRAWINGS & SPECIFICATIONS. ELEVATIONS & DIMENSIONS SHOWN ON DRAWING ARE FOR DETAILING PURPOSES ONLY AND SHOULD NOT BE USED FOR CONSTRUCTION UNLESS VERIFIED BY ENGINEER OR CONTRACTOR.



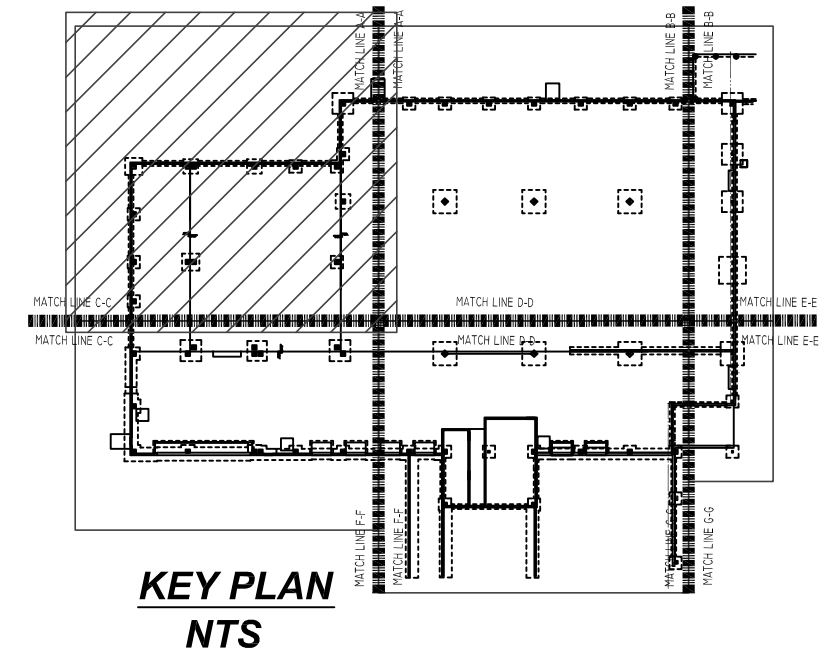
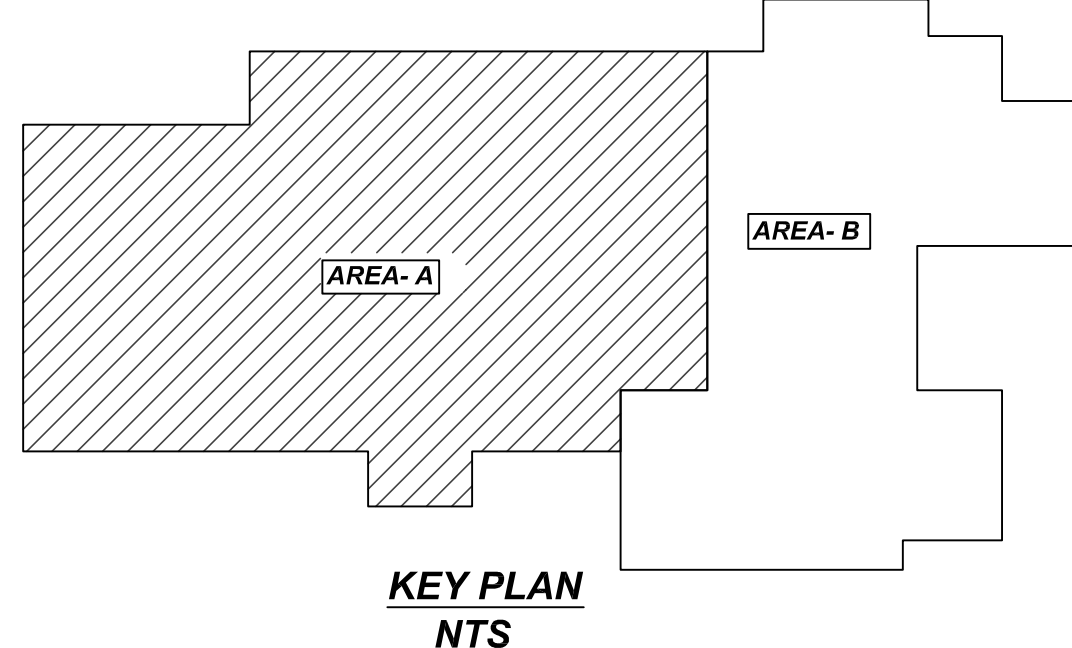
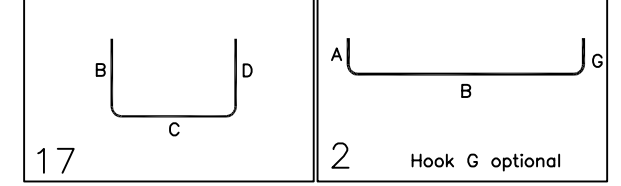
COVER DETAILS

FOOTING ALL SIDES	3"
WALL EXTERNAL & INTERNAL SIDES	3"



Release Number: R02

Bar Mark	Qty	Size	Total Length	Type	X'	Y'	Z'	BENDING DETAILS												
4B01	9	#4	6'-0"	17			3'-0"													
4B04	98	#4	3'-5"	2	0'-8"		2'-9"													
4B38	48	#4	3'-0"	2	0'-8"		2'-4"													



AREA-A WALL FOOTING REINFORCEMENT DETAILS

REF: S101A (DT.04/14/22)
 SCALE: 1/6" = 1'-0"

REBAR GRADE 60 ASTM A-615

SPLICES USED		ABBREVIATIONS		BAR MARK SIZE EQUIVALENT	
CLASS B 4,000 psi UNO				Imperial	Soft Metric
TOP BARS	OTHER BARS	ADD.	= Additional	#3	#10
#3 24"	#3 19"	B.O.W.	= Bottom of wall	#4	#13
#4 32"	#4 25"	C.S.	= Corner Bars	#5	#16
#5 40"	#5 31"	DIAG.	= Diagonal	#6	#19
#6 48"	#6 37"	D.O.	= Door Opening	#7	#22
#7 70"	#7 54"	DWLS.	= Dowels	#8	#25
#8 80"	#8 62"	E.F.	= Each Face	#9	#29
#9 91"	#9 70"	E.S.	= Each Side	#10	#32
#10 102"	#10 79"	E.W.	= Each Way	#11	#36
#11 113"	#11 87"	FTG.	= Footing		
#14	#14	F.F.	= Far Face		
		HORIZ.	= Horizontal		
		I.F.	= Inside Face		
		INTERS.	= Intersection		
		L.W.	= long Way		
		N.F.	= Near Face		
		O.F.	= Outside Face		
		S.W.	= Short Way		
		T&B	= Top & Bottom		
		T.O.W.	= Top of Wall		
		TRANS.	= Transverse		
		VERT.	= Vertical		

FOOD BANK OF DELAWARE
 AREA -A WALL FOOTING REINFORCEMENT DETAILS
 MILFORD, DE 19963

CUSTOMER: -
 DESIGNER: -
 DRAWN BY: DATE: JOB NO: SHEET NO.
 RS/SS 05.23.22 - - R02

REV NO	DATE	SENT FOR	REV NO	DATE	SENT FOR
0	05.23.22	APPROVAL			

NOTICE

SHORTAGES, IMPROPER FABRICATION OR CLAIMS FOR ANY OTHER REASON MUST BE REPORTED TO THIS COMPANY WITHIN 10 DAYS FROM ORIGINAL DELIVERY. THIS COMPANY ALSO RESERVES THE RIGHT TO FIELD INSPECT MATERIALS PRIOR TO REPLACEMENT OR RECONDITIONING OF MATERIALS AND WILL NOT BE LIABLE FOR CHARGES FROM WORK DONE IN THE FIELD WITHOUT PRIOR AUTHORIZATION FROM THIS COMPANY.

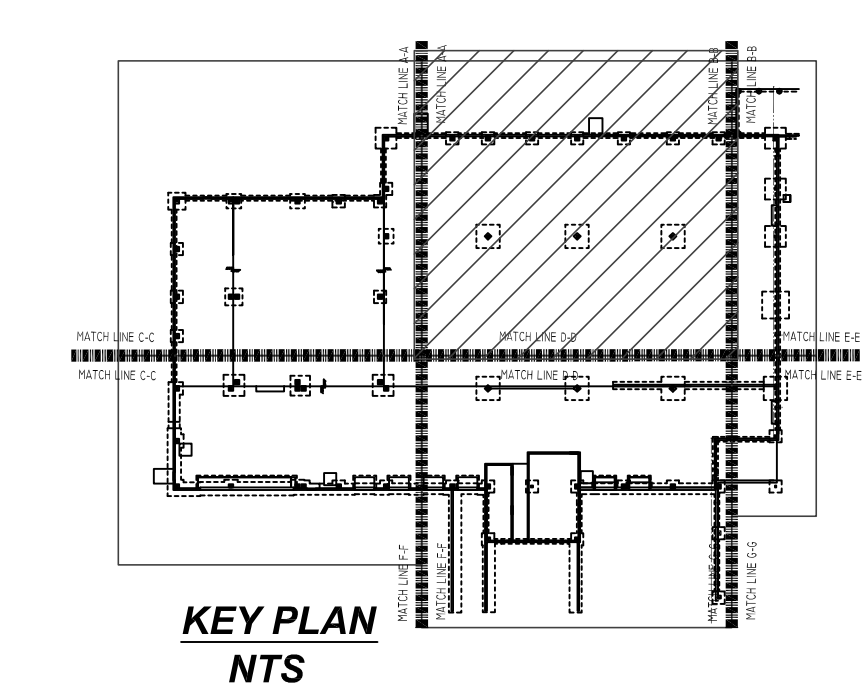
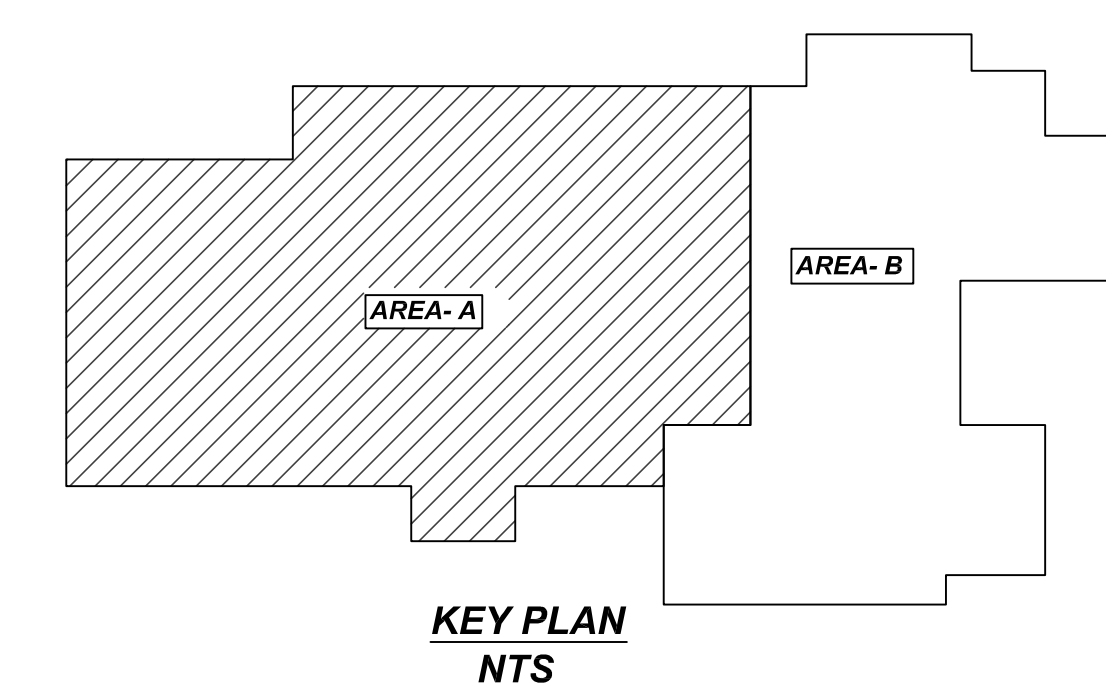
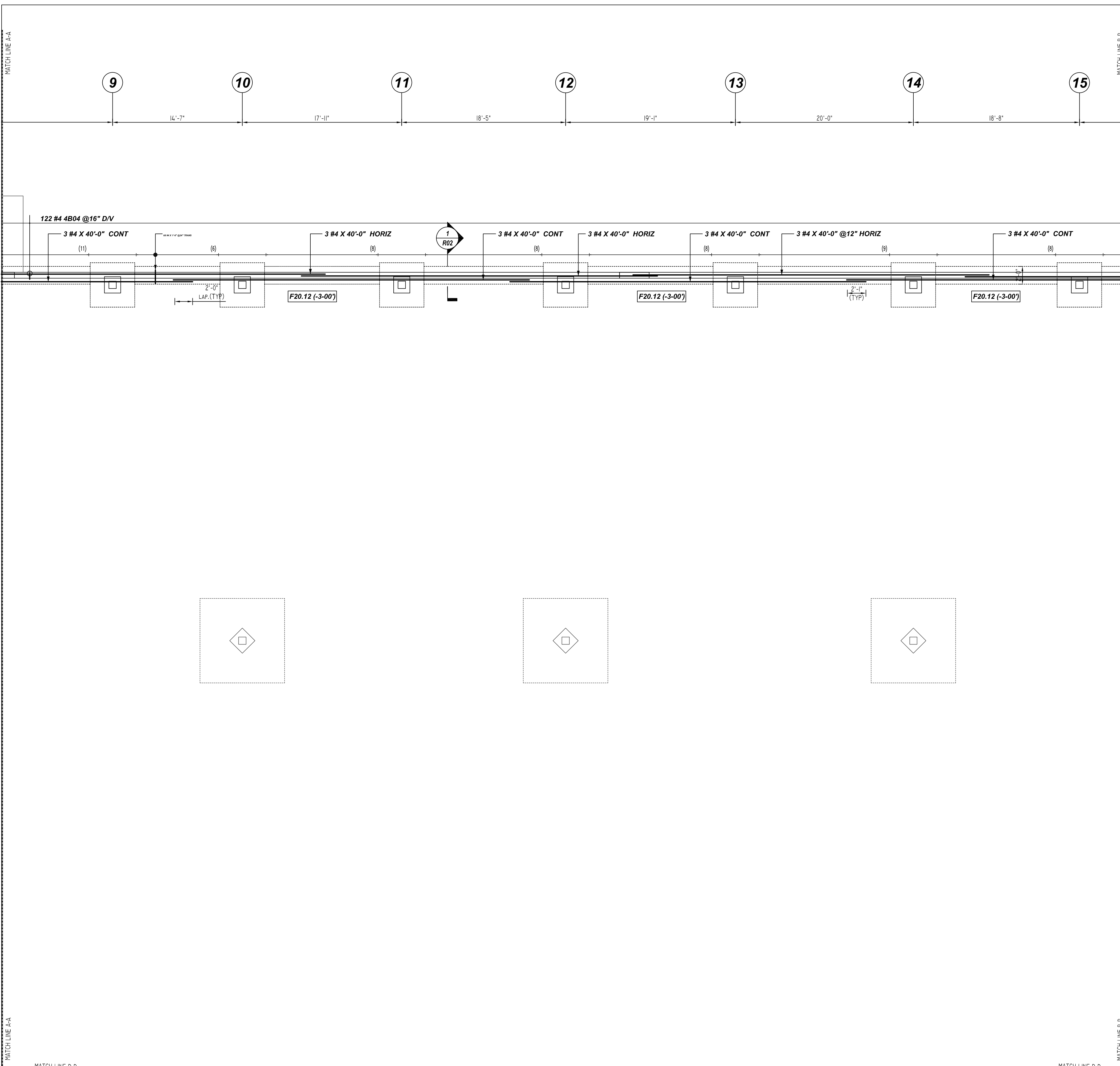
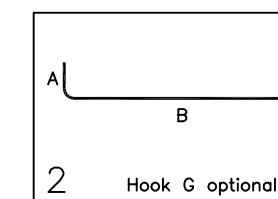
REINFORCING STEEL PLACING DRAWING ONLY. USE IN CONJUNCTION WITH CONTRACT DRAWINGS & SPECIFICATIONS. ELEVATIONS & DIMENSIONS SHOWN ON DRAWING ARE FOR DETAILING PURPOSES ONLY AND SHOULD NOT BE USED FOR CONSTRUCTION UNLESS VERIFIED BY ENGINEER OR CONTRACTOR.

COVER DETAILS

FOOTING ALL SIDES	3"
WALL EXTERNAL & INTERNAL SIDES	3"

Release Number: R03

Bar Mark	Qty	Size	Total Length	Type	X	Y	Z	W	V	U	T	S	R	Q	P	O	N	M	L	K	J	I	H	G	F	E	D	C	B	A
4B04	122	#4	3'-5"	2	0'-8"	7'-9"																								



AREA-A WALL FOOTING REINFORCEMENT DETAILS

REF: S101A (DT.04/14/22)
SCALE: 1/8" = 1'-0"

REBAR GRADE 60 ASTM A-615

SPLICES USED		ABBREVIATIONS	BAR MARK SIZE EQUIVALENT	
CLASS B 4,000 psi UNO	OTHER BARS		Imperial	Soft Metric
#3 24"	#3 19"	ADD. = Additional	#3	#10
#4 32"	#4 25"	B.O.W. = Bottom of wall	#4	#13
#5 40"	#5 31"	C.S. = Corner Bars	#5	#16
#6 48"	#6 37"	DIAG. = Diagonal	#6	#19
#7 70"	#7 54"	D.O. = Door Opening	#7	#22
#8 80"	#8 62"	DWLS. = Dowels	#8	#25
#9 91"	#9 70"	E.F. = Each Face	#9	#29
#10 102"	#10 79"	E.S. = Each Side	#10	#32
#11 113"	#11 87"	E.W. = Each Way	#11	#36
#14	#14	FTG. = Footing		
		F.F. = Far Face		
		HORIZ. = Horizontal		
		I.F. = Inside Face		
		INTERS. = Intersection		
		L.W. = long Way		
		N.F. = Near Face		
		O.F. = Outside Face		
		S.W. = Short Way		
		T&B = Top & Bottom		
		T.O.W. = Top of Wall		
		Trans. = Transverse		
		VERT. = Vertical		

FOOD BANK OF DELAWARE
AREA -A WALL FOOTING REINFORCEMENT DETAILS
MILFORD, DE 19963

CUSTOMER: -
DESIGNER: -

DRAWN BY	DATE	JOB NO	SHEET NO.
RS/SS	05.23.22	-	R03

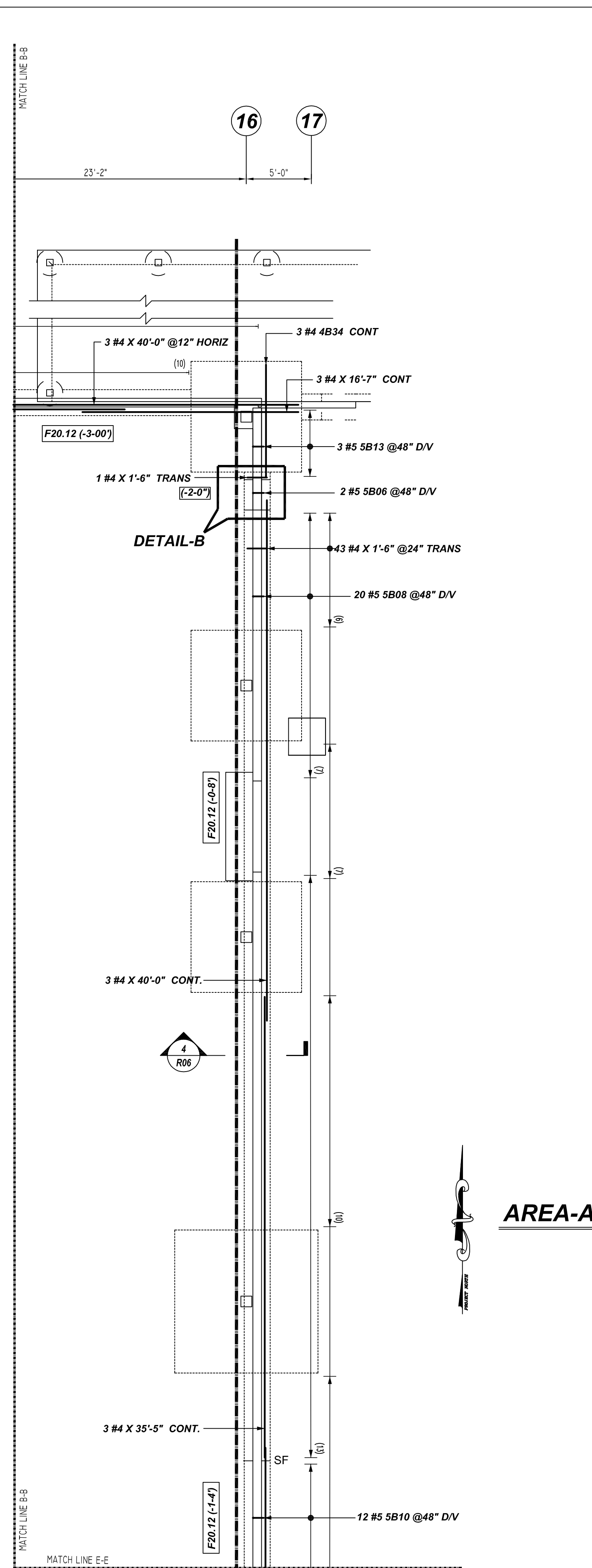
0	05.23.22	APPROVAL			
REV NO	DATE	SENT FOR	REV NO	DATE	SENT FOR

NOTICE

SHORTAGES, IMPROPER FABRICATION OR CLAIMS FOR ANY OTHER REASON MUST BE REPORTED TO THIS COMPANY WITHIN 10 DAYS FROM ORIGINAL DELIVERY. THIS COMPANY ALSO RESERVES THE RIGHT TO FIELD INSPECT MATERIALS PRIOR TO REPLACEMENT OR RECONDITIONING OF MATERIALS AND WILL NOT BE LIABLE FOR CHARGES FROM WORK DONE IN THE FIELD WITHOUT PRIOR AUTHORIZATION FROM THIS COMPANY.

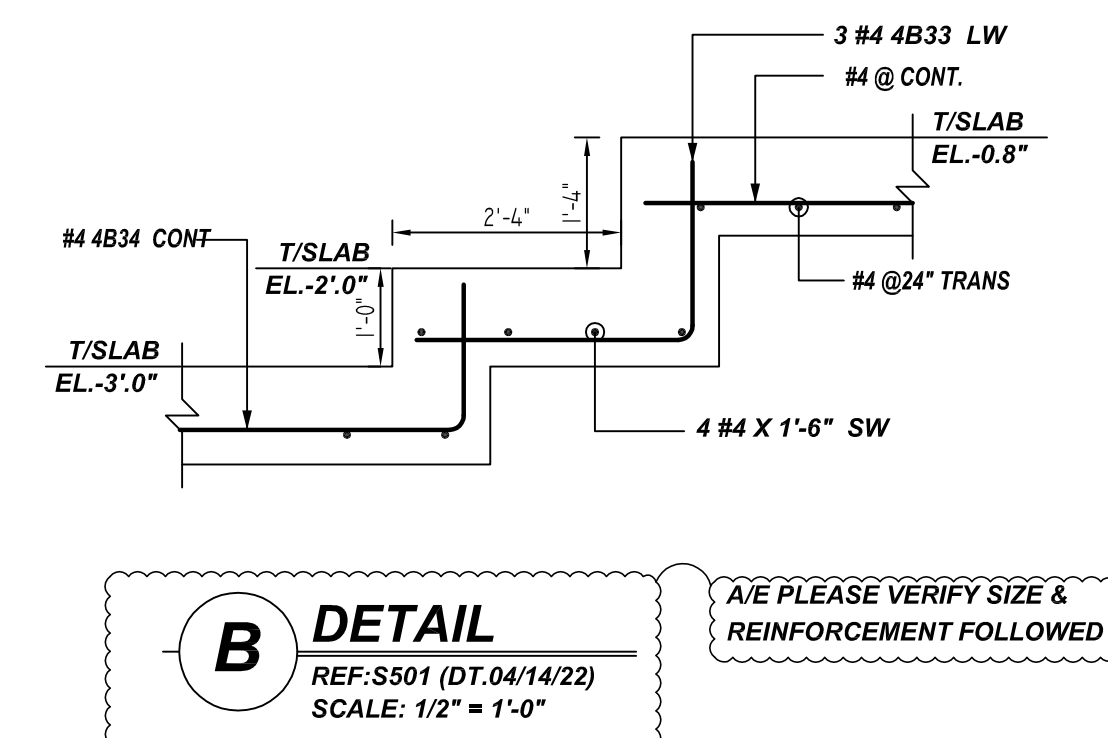
REINFORCING STEEL PLACING DRAWING ONLY. USE IN CONJUNCTION WITH CONTRACT DRAWINGS & SPECIFICATIONS. ELEVATIONS & DIMENSIONS SHOWN ON DRAWING ARE FOR DETAILING PURPOSES ONLY AND SHOULD NOT BE USED FOR CONSTRUCTION UNLESS VERIFIED BY ENGINEER OR CONTRACTOR.

COVER DETAILS	
FOOTING ALL SIDES	3"
WALL EXTERNAL & INTERNAL SIDES	3"



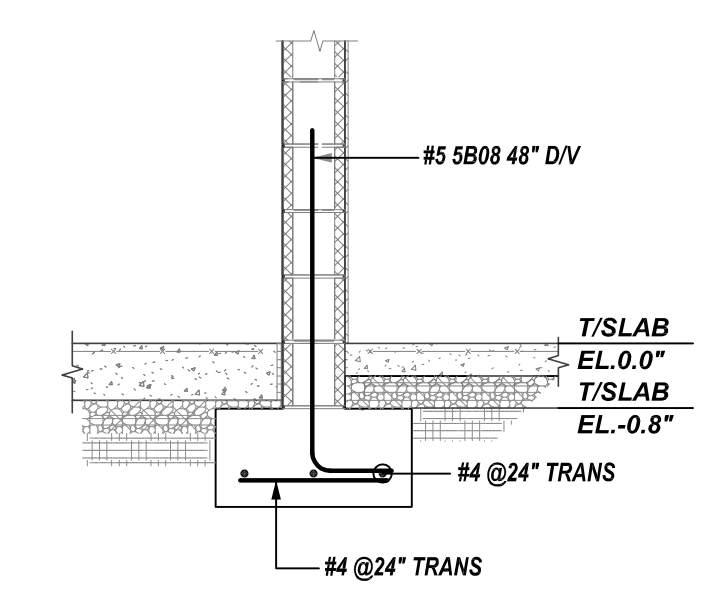
AREA-A WALL FOOTING REINFORCEMENT DETAILS

REF:S101A (DT.04/14/22)
SCALE: 1/6" = 1'-0"

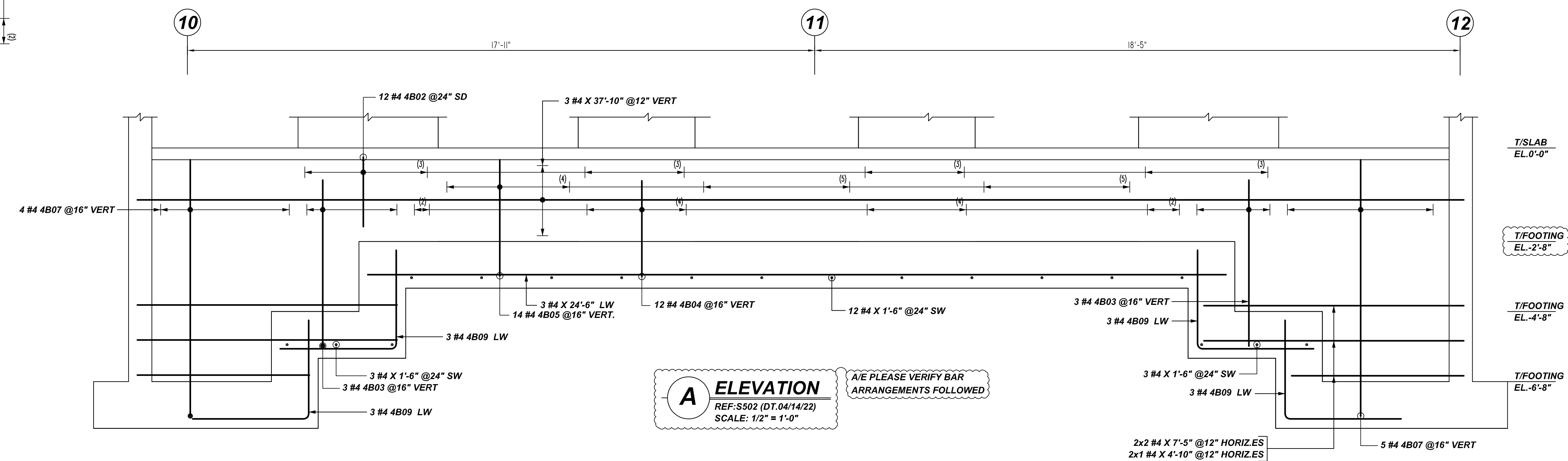


B DETAIL
REF:S501 (DT.04/14/22)
SCALE: 1/2" = 1'-0"

A/E PLEASE VERIFY SIZE & REINFORCEMENT FOLLOWED



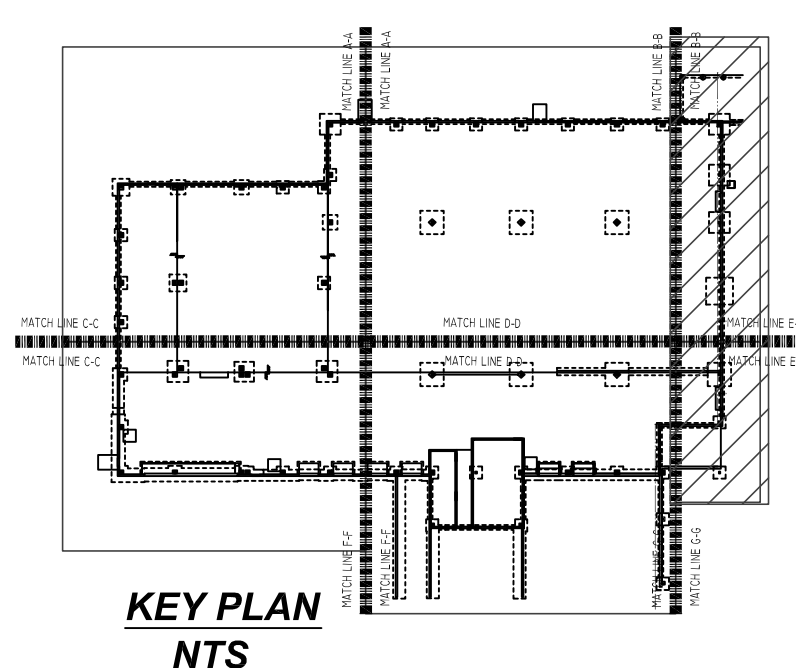
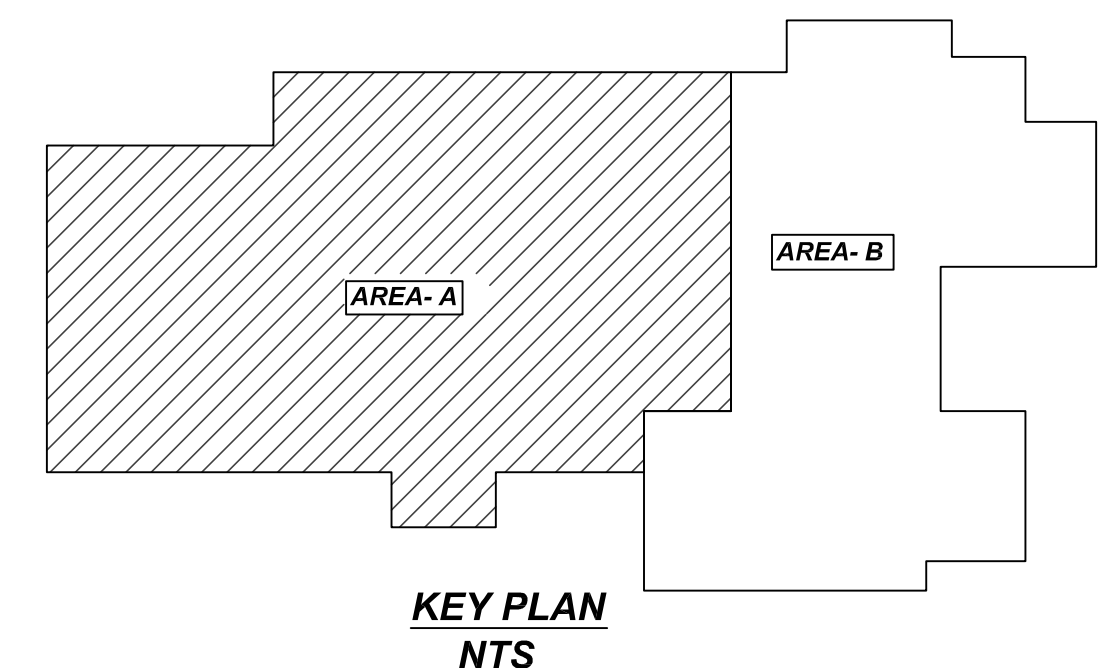
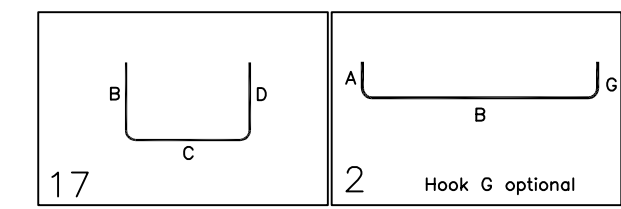
4 SECTION
REF:S503 (DT.04/14/22)
SCALE: 1/2" = 1'-0"



A ELEVATION
REF:S502 (DT.04/14/22)
SCALE: 1/2" = 1'-0"

A/E PLEASE VERIFY BAR ARRANGEMENTS FOLLOWED

Release Number	R06	BENDING DETAILS												
Bar Mark	Qty	Size	Total Length	Type	X	Y	Z	W	V	U	T	S	R	Q
4802	12	#4	4'-0"	17										
4803	6	#4	5'-5"	2	0'-8"	4'-9"								
4804	12	#4	3'-5"	2	0'-8"	2'-9"								
4805	14	#4	4'-0"	2	0'-8"	3'-4"								
4807	9	#4	8'-0"	2	0'-8"	7'-4"								
4809	12	#4	6'-7"	17										
4833	3	#4	4'-8"	17										
4834	3	#4	16'-1"	17										
5806	2	#5	5'-7"	2	0'-10"	4'-9"								
5808	28	#5	4'-4"	2	0'-10"	3'-5"								
5810	12	#5	5'-1"	2	0'-10"	4'-3"								
5813	3	#5	6'-7"	2	0'-10"	5'-9"								



REBAR GRADE 60 ASTM A-615

SPLICES USED		ABBREVIATIONS		BAR MARK SIZE EQUIVALENT	
CLASS B 4,000 psi UNO				Imperial	Soft Metric
TOP BARS	OTHER BARS	ADD.	= Additional	#3	#10
#3 24"	#3 19"	B.O.W.	= Bottom of wall	#4	#13
#4 32"	#4 25"	C.B.	= Corner Bars	#5	#16
#5 40"	#5 31"	DIAG.	= Diagonal	#6	#19
#6 48"	#6 37"	D.O.	= Door Opening	#7	#22
#7 70"	#7 54"	DWLS.	= Dowels	#8	#25
#8 80"	#8 62"	E.F.	= Each Face	#9	#29
#9 91"	#9 70"	E.S.	= Each Side	#10	#32
#10 102"	#10 79"	E.W.	= Each Way	#11	#36
#11 113"	#11 87"	FTG.	= Footing		
#14	#14	F.F.	= Far Face		
		HORIZ.	= Horizontal		
		I.F.	= Inside Face		
		INTERS.	= Intersection		
		L.W.	= Long Way		
		N.F.	= Near Face		
		O.F.	= Outside Face		
		S.W.	= Short Way		
		T&B	= Top & Bottom		
		T.O.W.	= Top of Wall		
		TRANS.	= Transverse		
		VERT.	= Vertical		

FOOD BANK OF DELAWARE
AREA -A WALL FOOTING REINFORCEMENT DETAILS
MILFORD, DE 19963

CUSTOMER: -
DESIGNER: -

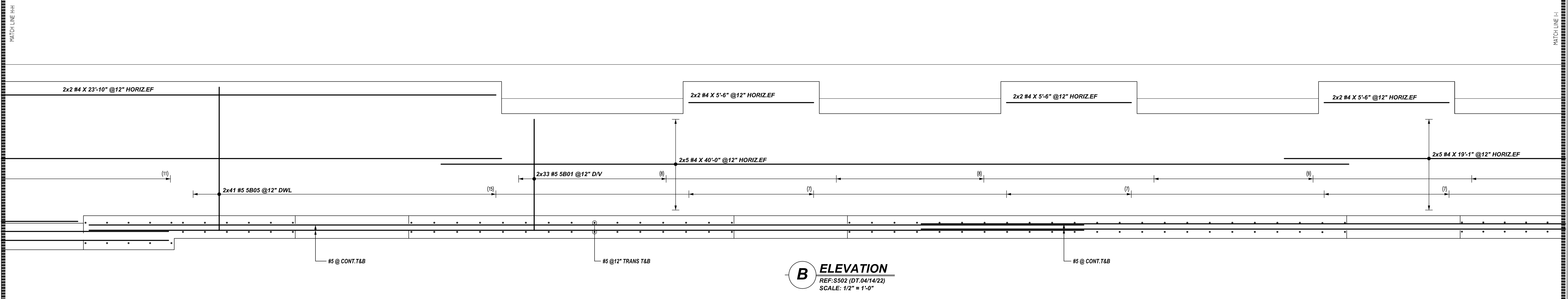
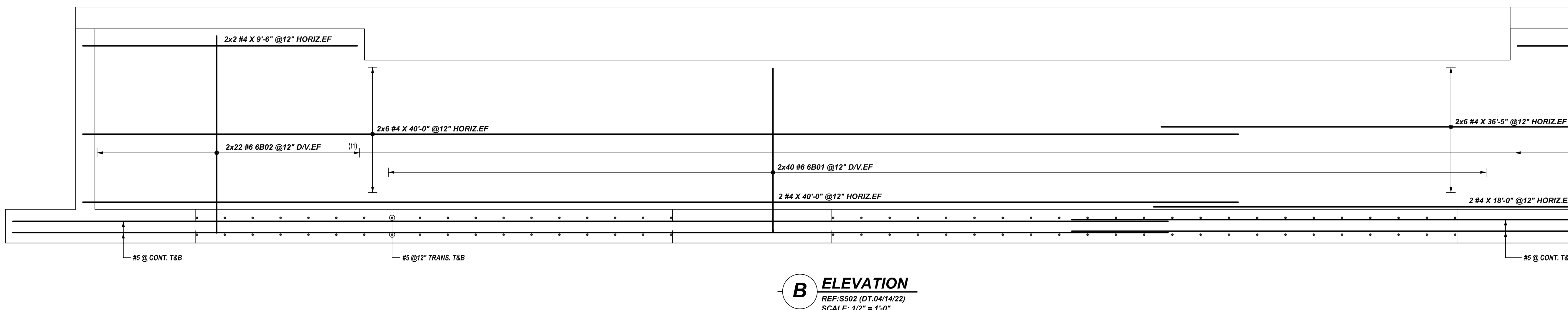
REV NO	DATE	APPROVAL	SENT FOR	REV NO	DATE	SENT FOR
0	05.23.22					

DRAWN BY	DATE	JOB NO	SHEET NO.
RS/SS	05.23.22	-	R06

NOTICE

SHORTAGES, IMPROPER FABRICATION OR CLAIMS FOR ANY OTHER REASON MUST BE REPORTED TO THIS COMPANY WITHIN 10 DAYS FROM ORIGINAL DELIVERY. THIS COMPANY ALSO RESERVES THE RIGHT TO FIELD INSPECT MATERIALS PRIOR TO REPLACEMENT OR RECONDITIONING OF MATERIALS AND WILL NOT BE LIABLE FOR CHARGES FROM WORK DONE IN THE FIELD WITHOUT PRIOR AUTHORIZATION FROM THIS COMPANY.

REINFORCING STEEL PLACING DRAWING ONLY. USE IN CONJUNCTION WITH CONTRACT DRAWINGS & SPECIFICATIONS. ELEVATIONS & DIMENSIONS SHOWN ON DRAWING ARE FOR DETAILING PURPOSES ONLY AND SHOULD NOT BE USED FOR CONSTRUCTION UNLESS VERIFIED BY ENGINEER OR CONTRACTOR.

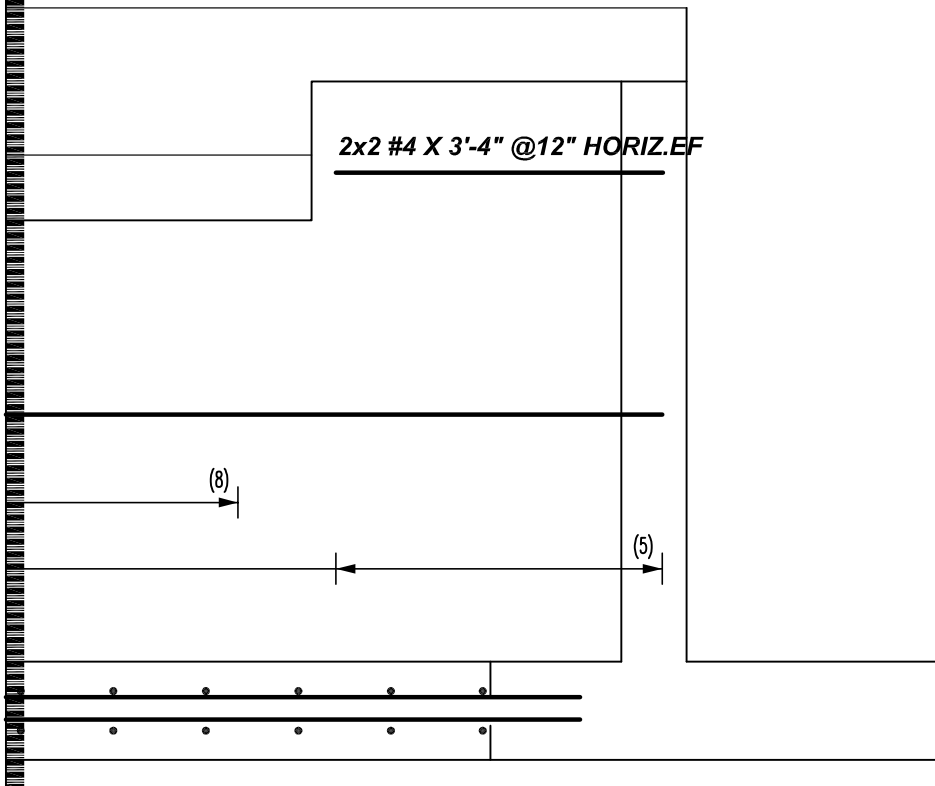
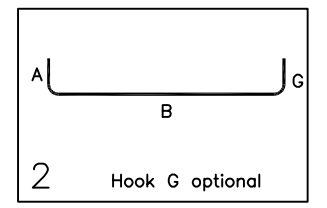


COVER DETAILS

FOOTING ALL SIDES	3"
WALL EXTERNAL & INTERNAL SIDES	3"

Release Number: 507

Bar Mark	Qty	Size	Total Length	Type	X'	Y'	Z'	U'	V'	W'	X'	Y'	Z'	U'	V'	W'
5801	66	#5	5'-9"	2	0'-10"	4'-11"										
5805	82	#5	7'-2"	2	0'-10"	6'-4"										
6801	80	#6	6'-8"	2	1'-0"	5'-8"										
6802	44	#6	7'-10"	2	1'-0"	6'-10"										



REBAR GRADE 60 ASTM A-615

SPLICES USED

CLASS B 4,000 psi UNO		ABBREVIATIONS		BAR MARK SIZE EQUIVALENT	
TOP BARS	OTHER BARS			Imperial	Soft Metric
#3 24"	#3 19"	ADD.	= Additional	#3	#10
#4 32"	#4 25"	B.O.W.	= Bottom of wall	#4	#13
#5 40"	#5 31"	C.B.	= Corner Bars	#5	#16
#6 48"	#6 37"	DIAG.	= Diagonal	#6	#19
#7 70"	#7 54"	D.O.	= Door Opening	#7	#22
#8 80"	#8 62"	DWLS.	= Dowels	#8	#25
#9 91"	#9 70"	E.F.	= Each Face	#9	#29
#10 102"	#10 79"	E.S.	= Each Side	#10	#32
#11 113"	#11 87"	E.W.	= Each Way	#11	#36
#14	#14	FTG.	= Footing		
		F.F.	= Far Face		
		HORIZ.	= Horizontal		
		I.F.	= Inside Face		
		INTERS.	= Intersection		
		L.W.	= long Way		
		N.F.	= Near Face		
		O.F.	= Outside Face		
		S.W.	= Short Way		
		T&B	= Top & Bottom		
		T.O.W.	= Top of Wall		
		Trans.	= Transverse		
		VERT.	= Vertical		

FOOD BANK OF DELAWARE
AREA -A WALL FOOTING REINFORCEMENT DETAILS
MILFORD, DE 19963

CUSTOMER: -
DESIGNER: -

DRAWN BY	DATE	JOB NO	SHEET NO.
RS/SS	05.23.22	-	R07

B ELEVATION
REF: S502 (DT. 04/14/22)
SCALE: 1/2" = 1'-0"

0	05.23.22	APPROVAL			
REV NO	DATE	SENT FOR	REV NO	DATE	SENT FOR