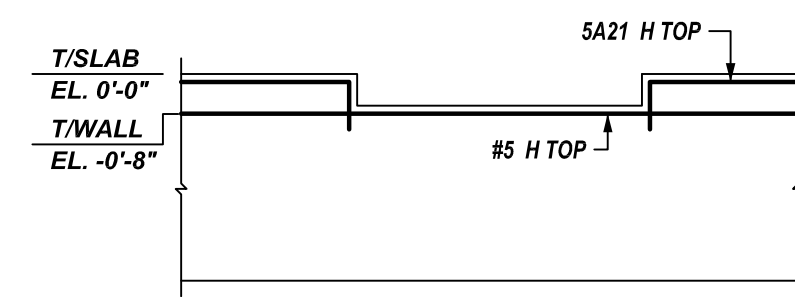


(WALL TOP HORIZONTAL REINFORCEMENT DETAILS)
BUILDING -1 WALL REINFORCEMENT DETAILS

REF: S1.01 & S3.01
 SCALE: 1/8" = 1'-0"

Bar Mark	Qty	Size	Total Length	Type	X'	Y'	Z'	W'	V'	U'	T'	S'	R'	Q'	P'	O'	N'	M'	L'	K'	J'	I'	H'	G'	F'	E'	D'	C'	B'	A'	
SA12	3	#5	10'-2"	20																											
SA13	4	#5	8'-4"	20																											
SA14	3	#5	9'-8"	20																											
SA15	8	#5	7'-10"	17																											
SA16	1	#5	9'-10"	20																											
SA17	3	#5	9'-4"	20																											
SA18	1	#5	9'-8"	20																											
SA19	45	#5	4'-9"	2	0'-10"																										
SA20	42	#5	2'-3"	14	0'-10"																										
SA21	2	#5	3'-11"	17																											
SA22	4	#5	2'-3"	17																											
SA23	2	#5	3'-8"	17																											
SA24	2	#5	12'-2"	20																											
SA25	4	#5	2'-8"	17																											
SA26	1	#5	10'-4"	20																											
SA27	4	#5	1'-8"	17																											
SA28	1	#5	11'-8"	20																											
SA29	2	#5	5'-9"	17																											
SA30	2	#5	12'-5"	20																											
SA31	8	#5	2'-9"	17																											
SA32	2	#5	3'-4"	2	0'-10"																										
SA33	2	#5	5'-8"	17																											
SA35	1	#5	4'-0"	2	0'-10"																										
SA36	3	#5	2'-7"	2	0'-10"																										
SA37	2	#5	4'-0"	2	0'-10"																										
SA38	3	#5	5'-0"	17																											
SA39	1	#5	2'-3"	2	0'-10"																										
SA40	1	#5	1'-11"	2	0'-10"																										
SA41	1	#5	2'-8"	2	0'-10"																										
SA42	4	#5	3'-8"	2	0'-10"																										
SA43	2	#5	2'-4"	2	0'-10"																										
SA44	2	#5	6'-8"	2	0'-10"																										
SA45	2	#5	3'-2"	2	0'-10"																										
SA46	1	#5	3'-4"	2	0'-10"																										
SA47	2	#5	2'-11"	2	0'-10"																										
SA48	1	#5	3'-10"	2	0'-10"																										
SA49	2	#5	6'-5"	2	0'-10"																										
SA50	1	#5	5'-8"	2	0'-10"																										
SA51	1	#5	1'-8"	2	0'-10"																										



B ELEVATION
 REF: -
 SCALE: 1/2" = 1'-0"

LAP SCHEDULE

3000 PSI (CLASS-B) CASE - 1
 Per ACI 318 (12.2.2)

BAR#	LENGTHS	
	TOP	OTHERS
#3	2'-4"	1'-10"
#4	3'-1"	2'-5"
#5	3'-11"	3'-0"
#6	4'-8"	3'-7"
#7	6'-9"	5'-3"
#8	7'-9"	6'-0"
#9	8'-9"	6'-9"
#10	9'-10"	7'-7"
#11	10'-11"	8'-5"

ALL TOP BARS ARE DEFINED AS HORIZ BARS WITH MORE THAN 12" OF CONCRETE BELOW BARS.

TYPICAL REINFORCING BAR CLEARANCE TABLE	
LOCATION	MIN. COVER
FOOTING BOTTOM	3" CLR
SLAB EDGE	2" CLR
WALL	2" CLR

REINFORCING STEEL PLACING DRAWING ONLY. USE IN CONJUNCTION WITH CONTRACT DRAWINGS & SPECIFICATIONS. ELEVATIONS & DIMENSIONS SHOWN ON THIS DRAWING ARE FOR DETAILING PURPOSES ONLY AND SHOULD NOT BE USED FOR CONSTRUCTION UNLESS VERIFIED BY ENGINEER OR CONTRACTOR. ALL REINFORCING ASTM. A615 GRADE 60

FOR APPROVAL

0	11/16/22	FOR APPROVAL
	DATE	SENT FOR
Structure	SPRING VALLEY APARTMENTS	
Location	MOLINE, IL	
Architect	HOOKER DEJONG INC	
Engineer	A.V.SCHWAN & ASSOCIATES	
Customer	GOETZ CONCRETE	
Made by:	Date:	CONTRACT NO.
MET	11/16/22	22-02-125
DRAWING COVERS		DRAWING NO.
BUILDING-1 WALL TOP REINFORCEMENT DETAILS		R03

REV. NO.	DATE	DESCRIPTION